



BULL SALE

MARCH 21, 2025 | 5:00 P.M. CST | F/T LIVESTOCK MARKET | PALMYRA, MO





BRADSHAW RANCH



BRADSHAW RANCH BULL SALE



MARCH 21, 2025



Welcome Cattlemen!

We want to invite you to the Bradshaw Ranch Bull Sale! We appreciate your consideration in our program and interest in this quality offering.

With a deep passion for this industry and coming from generational cattlemen we are striving to carry on the tradition of raising good cattle for many years to come. Acquiring our cow herd from Hoffman Ranch gave us the right foundation to build upon and further develop the type of cattle who will make lasting impressions in any operation. We are excited to have put together this offering of elite bulls who represent the kind of cattle we want to raise

Throughout the catalog you will see both prominent Hereford and Angus genetics that go back to some very influential programs. We hope this enhances confidence in your decision making to know these bulls not only come

with proven pedigrees, but also read with desirable phenotypic traits. Their soundness of structure, balance and genuine power will add value and longevity to your purebred operation.

We also see the usefulness in these high quality, functional bulls as herd sires who deserve a spot in the commercial cattleman's operation. With a positive future ahead in the cattle market we firmly believe this is the time to invest in bulls of this caliber to further improve the commercial cow-calf herd. Whether you're in the market for a Hereford with the goal to make F1 baldies, an efficient, hardy cross with the added heterosis and performance to add pounds while increasing fertility and longevity in replacement females. Alternatively, an elite Angus bull can offer low birth weights, high weaning weights injecting the added growth and strength of carcass traits leading to a more consistent commercial calf crop and market advantages.

This offering of yearling and age-advantage bulls have been developed on a high roughage-based diet. They have been semen tested and are ready to go to work in your herd.

The bulls are available for viewing any time here on the ranch in La Belle, Missouri, or on the day of the sale in Palmyra, Missouri. If we can be of any assistance, please don't hesitate to reach out.

Once again, we are glad you are here and appreciate your support; our family looks forward to working with you.

*God Bless,
Riley and Hannah
Bradshaw Ranch*



B/R BRADSHAW RANCH
BULL SALE
FRIDAY, MARCH 21, 2025 | 5:00 P.M. (CST)

Contact:

Riley Bradshaw 217-491-6096

Tyler Haerr 217-257-4639

Sale Location:

F&T Livestock Market

5864 US-24 Palmyra, MO 63461

Ranch Location:

12180 272nd Street

LaBelle, MO 63447

Auctioneer: Cody Lowderman 309-313-2171

AHA Rep: Corbin Cowles 270-991-2534

AAA Rep: Adam Conover 816-676-8560

Special Assignment: Joe Rickabaugh 785-633-3188

Special Assignment: Austin Sorensen 712-310-3788

Photography/Videography: Mikayln White 309-251-7260

Veterinarian: Dr. David Hudson, Canton Vet Service

Sale Schedule

12:00 P.M. (CST): Cattle Available for Viewing

4:00 P.M. (CST): Complimentary Meal

5:00 P.M. (CST): Bradshaw Ranch Bull Sale

Absentee Bidding:

If you would like to place a bid but are unable to attend the sale, please contact Riley Bradshaw to do so.
You may also bid online with Live-Ag.com
LiveAg: 817-533-6699

Terms:

Terms of the sale are cash or check, payable during or after the sale. All invoices must be paid before bulls are released; Cattle will be sold to the highest bidder with all disputes settled by the auctioneer. All sales are final, and cattle are the buyer's risk immediately after the animal is sold. Let Riley Bradshaw know any arrangements for pick-up and trucking when you make settlement.

Guarantee:

All bulls have been semen tested and examined to be sound and guaranteed breeders. If an animal fails to breed and is reported to the seller by September 1, 2025, it can be returned to seller if in acceptable condition. If the bull is confirmed to be a non-breeder, a replacement bull if available or credit towards the purchase of a replacement bull in our next sale will be offered.

Interest:

100% Interest and Possession sold on all the bulls unless otherwise noted.

Delivery:

Free delivery up to 350 miles on all bull purchases. Free nationwide delivery on total purchase of \$10,000 or more. \$100 discount/head if you take purchases home on sale day.

Volume Bull Discounts:

Volume buyer discounts at 5-9 bulls 5%, 10 or more 10%.

Herd Health:

Bulls have been fully vaccinated, wormed and poured.

Index:

Pages 7-15: Yearling Hereford Bulls

Pages 16-19: Two-year-old Hereford Bulls

Page 20: Flush

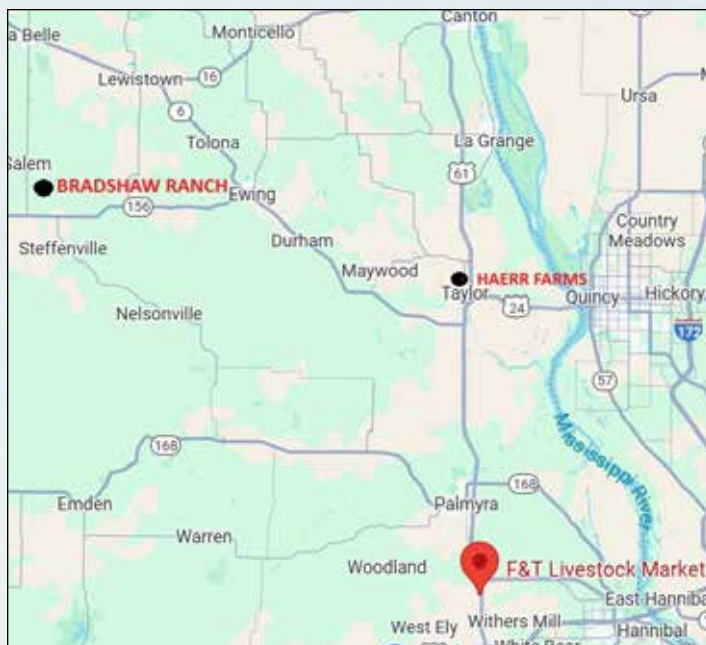
Pages 21-30: Yearling Angus Bulls

Pages 31-36: Fall Angus Bulls

Pages 37-39: Two-year-old Angus Bulls

Page 40-41: Yearling Simmental Bulls

Page 42: Semen



The bulls are available for viewing any time here at Bradshaw Ranch in LaBelle, Missouri and at Haerr Farms in Taylor, Missouri as well as on sale day in Palmyra, Missouri.



GUEST CONSIGNOR



Welcome

We are very excited and honored to be part of the Bradshaw Ranch Annual Bull Sale.

Located in Taylor, Mo., our family has been in the cattle business since 1932 when my great-grandpa moved into the area. Beginning as a background-to-finish operation, great grandpa would have Hereford feeder cattle shipped in from Cody, Wyoming by rail car. Overtime, we have transitioned to an Angus seed-stock operation, utilizing extensive Ai and Embryo technology since the early '80s.

Our focus is simple. Provide cattle that are practical for the commercial cattleman that add extra pounds and premiums at sale time. We believe that if we provide bulls to our customers that make them more money, then it's a win-win for both operations!

This set of 18- to 20-month-old bulls have been developed on high roughage rations focusing on longevity and fertility. All bulls are DNA tested for higher accuracy genomics and parentage verification. Our homegrown bulls have been raised on VitaFerm ConceptAid products since conception and we expect them to go out and perform in all environments.

Though our sample size is small, we feel our diversity in genetic options offer bulls for all operations. Bulls are available for viewing anytime. We hope that you come to the sale or bid with confidence on LiveAg.

*God Bless,
Tyler, Miranda, Stetson & Shep*



BID FROM ANYWHERE

with **LiveAg**
PUREBRED

1. VISIT LIVE-AG.COM

Navigate to the **"Purebred"** tab, located in the main menu. Select the auction of choice.

2. LOG IN / CREATE AN ACCOUNT

Select the **"Login or Create an Account"** button. Fill out the required fields to bid online. Agree to the terms of service, and finish with the **"Register"** button." An account is not necessary to watch an auction.

3. REGISTER TO BID

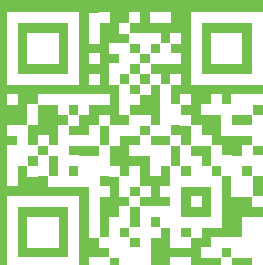
Once logged in, find your sale of choice and click **"Register to Bid"**. Agree to the terms and conditions, and click the **"Register"** button. Your request will be approved in a timely manner.

* CALL OUR TEAM WITH ANY QUESTIONS

We're dedicated to ensuring you have a positive bidding experience. Please call **817-533-6699** with any questions.



**SCAN
TO REGISTER**



MARCH 21, 2025



BRADSHAW RANCH BULL SALE





YEARLING HEREFORD BULLS

SIRE OF LOTS 1 & 2



H B DISTINCT (CHB)(DLF,HYF,IEF,MSUDF,MDF,DBF)
HEREFORD | 44184682 | Calved: 2/8/20 | Tattoo: BE 00049

CHURCHILL SENSATION 028X (S000)(DLF,HYF,IEF,MDF,DBF)
NJW 160B 028X HISTORIC 81E ET (DLF,HYF,IEF,MSUDF,MDF,DBF)
 P43829334 NJW 73S 38W DAYDREAM 160B (DLF,HYF,IEF,MSUDF)



LCX PERFECTO 11B ET (DLF,HYF,IEF,MSUDF)
H DS MISS SPICE 8082 (DLF,HYF,IEF,MSUDF,MDF,DBF)
 P43915164 H BL MISS SPICE 613 ET (DLF,HYF,IEF,MSUDF)

UPS DOMINO 3027 (S000)(CHB)(DLF,HYF,IEF,MSUDF,MDF)
 CHURCHILL LADY 7202T ET (DLF,HYF,IEF)
 NJW 76S P20 BEEF 38W ET (S000)(DLF,HYF,IEF,MSUDF,MDF)
 NJW P606 72N DAYDREAM 73S (DLF,HYF,IEF,MSUDF,MDF)

NJW 98S R117 RIBEYE 88X ET (S000)(DLF,HYF,IEF,MSUDF,MDF,DBF)
 WLL ZOEY 3Z (DLF,HYF,IEF,MDF,DBF)
 PERKS 144U RIGHT TRACK 2040 (S000)(DLF,HYF,IEF,MDF)
 H AC MARIANNE 231 ET (DLF,HYF,IEF,MDF,DBF)

BMIS
483
BIIS
578
CHBS
163

CE	BW	WW	YW	DMI	SC	SCF	MM	M&G
10.5	0.3	70	103	0.1	1.5	21.7	36	71
MCE	MCW	UDDR	TEAT	CW	FAT	REA	MARB	
4.9	106	1.80	2.00	90	0.032	1.06	0.24	

We are thrilled with what H B Distinct has done the past few years in the Hereford breed. When we raised this bull we never thought he would have such an impact on such variety of operations. He is a must use sire with his predictability and EPD figures. The sons we are offering prove that and do so at a high level.

DISTINCT X ZOEY 3Z - MATING OF LOTS 1 & 2



This is a royally bred mating! When you stack proven cow families like this the outcome is in the elites. With being double bred Zoey 3Z, in addition to having NJW Daydream and Marianna 231 in the pedigree the predictability and consistency is unmatched. Lots 1 and 2 are maternal brothers to many influential herd sires and donors, including the infamous Perfecto 11B. To say the least you can be confident in an investment here.

MARCH 21, 2025



BRADSHAW RANCH BULL SALE

YEARLING HEREFORD BULLS



LOT 1



1 | B DISTINCT 4212 ET {DLF,HYF,IEF,MSUDF,MDF,DBF}

P44568874 | Calved: 1/30/24 | Tattoo: LE 4212

NJW 160B 028X HISTORIC 81E ET {DLF,HYF,IEF,MSUDF,MDF,DBF} CHURCHILL SENSATION 028X {SD00}{DLF,HYF,IEF,MDF,DBF}

H B DISTINCT {CHBU}{DLF,HYF,IEF,MSUDF,MDF,DBF} NJW 73S 38W DAYDREAM 160B {DLF,HYF,IEF,MSUDF}

P44184682 H DS MISS SPICE 8082 {DLF,HYF,IEF,MSUDF,MDF,DBF} LCX PERFECTO 11B ET {DLF,HYF,IEF,MSUDF}

TH 12271I VICTOR 719T {SD00}{DLF,HYF,IEF,MSUDF,MDF,DBF} H BL MISS SPICE 613 ET {DLF,HYF,IEF,MSUDF}

WLL ZOIEY 3Z {DLF,HYF,IEF,MDF,DBF} DRF JWR PRINCE VICTOR 71I {SD00}{DLF,HYF,IEF,MSUDF}

P43333321 WLL VENUS 19X {HYF} KBCR 19D DOMINETTE 122 {DLF,HYF,IEF}

ELM-LODGE NEXT BIG THING 3N {HYF}

KIRBY-LONEPINE SYBIL ET 544U {HYF}

CE	BW	WW	YW	DMI	SC	SCF	MM	M&G
7.4	0.7	64	97	0.2	0.9	21.9	33	65
MCE	MCW	UDDR	TEAT	CW	FAT	REA	MARB	
3.2	104	1.40	1.50	82	-0.018	0.74	-0.09	

- Homozygous Polled.

Recommended for use on hieifers. This one has been an absolute stand out since birth. 4212 will have your attention with his overall density, center body capacity and unique design. It's hard to find a Hereford bull with this much width down his top, huge hip, wide pin set while still being flexible and sound structured. That coupled with his predctions make him an elite herd sire prospect. Top 3% FAT; Top 4% TEAT; Top 8% UDDR; Top 10% REA; Top 14% BW, SCF, BMI; Top 15% MG; Top 17% MM; Top 18% CE, CW; Top 21% WW.

- Retaining 1/4 semen interest.

YEARLING HEREFORD BULLS



LOT 2

2

B DISTINCT 4207 ET (DLF,HYF,IEF,MSUDF,MDF,DBF)
P44568872 | Calved: 1/28/24 | Tattoo: LE 4207

NJW 160B 028X HISTORIC 81E ET (DLF,HYF,IEF,MSUDF,MDF,DBF) CHURCHILL SENSATION 028X (SOD)(DLF,HYF,IEF,MDF,DBF)
H B DISTINCT (CHB)(DLF,HYF,IEF,MSUDF,MDF,DBF) NJW 735 38W DAYREAM 160B (DLF,HYF,IEF,MSUDF)
P44184682 H DS MISS SPICE 8082 (DLF,HYF,IEF,MSUDF,MDF,DBF) LCX PERFECTO 11B ET (DLF,HYF,IEF,MSUDF)
H BL MISS SPICE 613 ET (DLF,HYF,IEF,MSUDF)
AHAX GE CPO
TH 122 71I VICTOR 719T (SOD)(DLF,HYF,IEF,MSUDF,MDF,DBF) DRF JWR PRINCE VICTOR 71I (SOD)(DLF,HYF,IEF,MSUDF)
WLL ZOBY 3Z (DLF,HYF,IEF,MDF,DBF) KBCR 19D DOMINETTE 122 (DLF,HYF,IEF)
P43333321 WLL VENUS 19X (HYF) ELM-LODGE NEXT BIG THING 3N (HYF)
KIRBY-LONEPINE SYBIL ET 544U (HYF)

BMIS
478
BIS
574
CHBS
144

CE	BW	WW	YW	DMI	SC	SCF	MM	M&G
1.4	1.9	72	117	0.2	1.6	23.0	33	70
MCE	MCW	UDDR	TEAT	CW	FAT	REA	MARB	
-0.1	108	1.40	1.50	77	-0.008	0.62	0.18	

- Homozygous Polled.

We are becoming more impressed by 4207 each day as he matures. He is masculine, stocky who uniquely remains extended upfront, smooth shouldered and good built. Here's a Distinct son with a big forearm, big rib, wide top that stays true in his width through his hip and to the ground. This bull is an outlier when you study his EPD chart which just adds to his value. Top 4% YW, TEAT; Top 5% WW, MG; Top 7% BMI, BII, SC, FAT; Top 8% UDDR; Top 9% SCR; Top 16% CHB, MM; Top 22% REA.

- Retaining 1/4 semen interest.



MARCH 21, 2025



BRADSHAW RANCH BULL SALE

YEARLING HEREFORD BULLS

SIRE OF LOTS 3-11



CHURCHILL RED THUNDER 133J ET

CHURCHILL RED THUNDER 133J ET {DLF, HYF, IEF, MSUDF, MOF, DBP}
HEREFORD | 44267942 | Calved: 1/12/21 | Tattoo: LE 133

LCX PERFECTO 11B ET {DLF, HYF, IEF, MSUDF}
DM ALL AROUND 9046 ET {CHB, DLF, HYF, IEF, MSUDF, MOF, DBP}
P44015527 DM L1 DOMINETTE 301 ET {DLF, HYF, IEF, MSUDF}



EFBEEF BR VALIDATED 8413 {SDOH, CHB, DLF, HYF, IEF, MSUDF, MOF, DBP}
BR VALIDATED 8413 6035 7098 {DLF, HYF, IEF, MSUDF, MOF, DBP}
P43857421 BR BENNETT 4R Y428 2101 6035 {HYP, DBP}

NJW 98S R117 RIBEYE 88X ET {SDOH, DLF, HYF, IEF, MSUDF, MOF, DBP}
WLL ZOY 3Z {DLF, HYF, IEF, MSUDF, MOF, DBP}
CL 1 DOMINO 955W {SDOH, DLF, HYF, IEF, MSUDF, MOF, DBP}
DM L1 DOMINETTE 901 {DLF, HYF, IEF}

BMI\$
575
BII\$
697
CHB\$
194

CE	BW	WW	YW	DMI	SC	SCF	MM	M&G
4.8	1.4	62	91	0.3	1.6	27.3	36	67
MCE	MCW	UDDR	TEAT	CW	FAT	REA	MARB	
3.9	71	1.30	1.40	83	0.022	1.07	0.72	

As you will see throughout the yearling Hereford bulls being offered, we are extremely pleased how Churchill Red Thunder worked in our cow herd. This should enhance your confidence in his consistency. Everyone that has stopped by the ranch is amazed in the uniformity Red Thunder has stamped on this set.



LOT 3

3 | B RED THUNDER 4042 {DLF, HYF, IEF, MSUDF, DBP}
P44593780 | Calved: 2/5/24 | Tattoo: BE 4042

DM ALL AROUND 9046 ET {CHB, DLF, HYF, IEF, MSUDF, MOF, DBP}
CHURCHILL RED THUNDER 133J ET {DLF, HYF, IEF, MSUDF, MOF, DBP}
P44267942 BR VALIDATED 8413 6035 7098 {DLF, HYF, IEF, MSUDF, MOF, DBP}



CHURCHILL BROADWAY 858F {CHB, DLF, HYF, IEF, MSUDF, MOF, DBP}
B MALLORY 2053 {DLF, HYF, IEF, MSUDF, MOF, DBP}
P44374335 H VM MALLORY 8533 ET {DBP}

LCX PERFECTO 11B ET {DLF, HYF, IEF, MSUDF}
DM L1 DOMINETTE 301 ET {DLF, HYF, IEF, MSUDF}
EFBEEF BR VALIDATED 8413 {SDOH, CHB, DLF, HYF, IEF, MSUDF, MOF, DBP}
BR BENNETT 4R Y428 2101 6035 {HYP, DBP}

BMI\$
555
BII\$
671
CHB\$
192

CE	BW	WW	YW	DMI	SC	SCF	MM	M&G
2.6	3.6	72	110	0.4	1.0	25.7	32	68
MCE	MCW	UDDR	TEAT	CW	FAT	REA	MARB	
4.9	101	1.50	1.50	103	0.062	1.02	0.46	

• Homozygous Polled.

This 2053 Churchill Broadway daughter hit it out of the park on her first calf. 4042 caught our attention from the moment he hit the ground. A sale stand out with not only his added pigment; but also his presence, athleticism and balance. Not to mention his reassurance in EPDs. Top 1% CHB, BMI, BII, REA, CW; Top 2% UDDR; Top 3% SCF; Top 5% WW, TEAT; Top 8% MG; Top 10% YW; Top 16% MCE; Top 21% MM.



YEARLING HEREFORD BULLS



LOT 4



HMS ADVANCE 7701 ET — DAM OF LOT 4

The 27A daughters are lights out brood cows around here and 7701 is at the top of that list. Big stout donor cow with exceptional structure build. Raised a maternal brother to Lot 4 that sold for \$15,000 in the Hoffman Ranch 2021 Bull Sale. Power in the blood.

4

| B RED THUNDER 4201 ET {DLF,HYF,IEF,MSUDF,MOP}

P44629175 | Calved: 1/17/24 | Tattoo: LE 4201

DM ALL AROUND 9046 ET {CHB}{DLF,HYF,IEF,MSUDF,MOP} LCX PERFECTO 118 ET {DLF,HYF,IEF,MSUDF,MOP}
 CHURCHILL RED THUNDER 133J ET {DLF,HYF,IEF,MSUDF,MOP,DFB} DM L1 DOMINETTE 301 ET {DLF,HYF,IEF,MSUDF,MOP}
 P44267942 BR VALIDATED B413 6035 7098 {DLF,HYF,IEF,MOP,DFB} EFBEEF BR VALIDATED B413 {SSDH}{CHB}{DLF,HYF,IEF,MSUDF,MOP,DFB}
 AHM GE CPO BR BENNETT 4R Y428 2101 6035 {HYPDOP} **BMIS**
 NJW 135U 10Y HOMETOWN 27A {DLF,HYF,IEF,MSUDF,MOP} NJW 73S W18 HOMETOWN 10Y ET {SSDH}{CHB}{DLF,HYF,IEF,MSUDF,MOP} **507**
HMS ADVANCE 7701 ET {DLF,HYF,IEF,MSUDF,MOP,DFB} NJW 4037 34S DURANGO VACA 135U {DOOD}{DLF,HYF,IEF,MSUDF,MOP} **BIIS**
 P43857471 HH MISS ADVANCE 1181Y ET {DLF,HYF,IEF} HH ADVANCE 7034T ET {DLF,HYF,IEF} **602**
 HH MISS ADVANCE 5139R ET {DLF,HYF,IEF} **CHBS**
161

CE	BW	WW	YW	DMI	SC	SCF	MM	M&G
4.0	2.5	62	93	0.3	1.1	24.2	28	59
MCE	MCW	UDDR	TEAT	CW	FAT	REA	MARB	
1.1	110	1.40	1.50	90	0.022	0.74	0.31	

When looking for one with density of skull, bone and skeleton, 4201, quickly comes to the top of the list. He's rugged, big ribbed and square hipped. Extra pigment, deep red color and extreme docility only add to his value. Top 3% BMI; Top 4% BI, TEAT; Top 6% CHB, CW, SCF; Top 8% UDDR; Top 10% REA; Top 13% MARB.

YEARLING HEREFORD BULLS



5 | B RED THUNDER 4013 {DLF,HYF,IEF,MSUDF,MDF,DBF}

P44591512 | Calved: 1/11/24 | Tattoo: BE 4013

DM ALL AROUND 9046 ET {CHB}{DLF,HYF,IEF,MSUDF,MDF}
CHURCHILL RED THUNDER 133J ET {DLF,HYF,IEF,MSUDF,MDF,DBF}
P44267942 BR VALIDATED B413 6035 7098 {DLF,HYF,IEF,MDF,DBF}



NJW 135U 10Y HOMETOWN 27A {DLF,HYF,IEF,MSUDF,MDF}
H MARGO 802 ET {DLF,HYF,IEF,MSUDF,MDF,DBP}
P43958072 KJ 804P MARGO 426T {DLF,HYF,IEF,DBP}

LCX PERFECTO 11B ET {DLF,HYF,IEF,MSUDF}
DM L1 DOMINETTE 301 ET {DLF,HYF,IEF,MSUDF}
EFBEEF BR VALIDATED B413 {SDO}{CHB}{DLF,HYF,IEF,MSUDF,MDF,DBF}
BR BENNETT 4R Y428 2101 6035 {HYP,DBP}

BMIS

519

BIIS

627

CHBS

167

CE	BW	WW	YW	DMI	SC	SCF	MM	M&G
1.8	4.3	69	110	0.5	2.0	24.7	40	75
MCE	MCW	UDDR	TEAT	CW	FAT	REA	MARB	
4.6	101	1.30	1.30	82	-0.028	0.88	0.41	

- Homozygous Polled.

From the ground up this one reads with longevity. Big feet, square built and structure that can flat go. He's big and round in his rib and square out through his hip without giving up the added look and balance. Big testicled. Top 1% SC, FAT; Top 2% BII, MM, MG; Top 3% REA, BMI; Top 4% CHB; Top 5% SCF; Top 6% MARB; Top 9% WW; Top 10% YW; Top 18% CEM, CW; Top 25% UDDR.

6 | B RED THUNDER 4203 ET {DLF,HYF,IEF,MSUDF,MDF,DBF}

P44591056 | Calved: 2/2/24 | Tattoo: LE 4203

DM ALL AROUND 9046 ET {CHB}{DLF,HYF,IEF,MSUDF,MDF}
CHURCHILL RED THUNDER 133J ET {DLF,HYF,IEF,MSUDF,MDF,DBF}
P44267942 BR VALIDATED B413 6035 7098 {DLF,HYF,IEF,MDF,DBF}



NJW 135U 10Y HOMETOWN 27A {DLF,HYF,IEF,MSUDF,MDF}
H MARGO 802 ET {DLF,HYF,IEF,MSUDF,MDF,DBP}
P43958072 KJ 804P MARGO 426T {DLF,HYF,IEF,DBP}

LCX PERFECTO 11B ET {DLF,HYF,IEF,MSUDF}
DM L1 DOMINETTE 301 ET {DLF,HYF,IEF,MSUDF}
EFBEEF BR VALIDATED B413 {SDO}{CHB}{DLF,HYF,IEF,MSUDF,MDF,DBF}
BR BENNETT 4R Y428 2101 6035 {HYP,DBP}

BMIS

531

BIIS

643

CHBS

173

CE	BW	WW	YW	DMI	SC	SCF	MM	M&G
-0.8	3.9	73	112	0.5	1.8	25.0	47	83
MCE	MCW	UDDR	TEAT	CW	FAT	REA	MARB	
2.6	96	1.20	1.20	90	-0.008	0.91	0.41	

- Homozygous Polled.

A very correct made bull with a killer look. He's smooth shouldered, good designed and comes with some serious substance of bone and foot. We love his pattern and flexibility off both ends. Top 1% MM, MG; Top 2% BII, BMI; Top 3% CHB, REA, SC; Top 4% WW, SCF; Top 6% MARB, CW; Top 7% FAT; Top 8% YW.



The Margo cow family has done a lot for us and continues to produce good ones. 4203 and 4013 are maternal brothers to the \$105,000 high seller in the 2021 Hoffman Ranch Bull Sale. Red Thunder clicked with her and made a pair of elite bulls.

YEARLING HEREFORD BULLS



LOT 7

7 | B RED THUNDER 4012 (DLF,HYF,IEF,MSUDF,MDP) P44591513 | Calved: 1/9/24 | Tattoo: BE 4012

DM ALL AROUND 9046 ET (CHB)(DLF,HYF,IEF,MSUDF,MDP)
CHURCHILL RED THUNDER 133J ET (DLF,HYF,IEF,MSUDF,MDP)
P44267942 BR VALIDATED B413 6035 7098 (DLF,HYF,IEF,MSUDF,MDP)



NJW 73S W18 HOMETOWN 10Y ET (SOD)(CHB)(DLF,HYF,IEF,MSUDF,MDP)
H W4 MS SANDHILLS 5155 ET (MDP)
P43583717 F MS PAYBACK 021 (DLF,HYF,IEF)

LCX PERFECTO 118 ET (SOD)(DLF,HYF,IEF,MSUDF)
DM L1 DOMINETTE 301 ET (DLF,HYF,IEF,MSUDF)
EFBEEF BR VALIDATED B413 (SOD)(CHB)(DLF,HYF,IEF,MSUDF,MDP)
BR BENNETT 4R Y428 2101 6035 (HYF,DP)

SHF WONDER M326 W18 ET (SOD)(CHB)(DLF,HYF,IEF,MSUDF,MDP)
NJW P606 72N DAYDREAM 73S (DLF,HYF,IEF,MSUDF,MDP)
H PAYBACK 807 ET (SOD)(DLF,HYF,IEF)
F MS L18 EXCEL 452

BMI\$
518
BII\$
608
CHB\$
150

CE	BW	WW	YW	DMI	SC	SCF	MM	M&G
10.2	1.5	63	95	0.5	1.1	25.4	35	67
MCE	MCW	UDDR	TEAT	CW	FAT	REA	MARB	
6.7	93	1.30	1.40	86	0.002	0.94	0.23	

Recommend for use on heifers. Dense, masculine while still being smooth in his joints, good footed and sound. 4012 is a very solid, complete bull. Top 3% BMI, BII, REA, SCF; Top 7% CE, CEM; Top 10% CHB, CW, TEAT, MG, MM; Top 25% WW, YW, MARB, UDDR, FAT.



LOT 4

MARCH 21, 2025



BRADSHAW RANCH BULL SALE

YEARLING HERFORD BULLS



8 | B RED THUNDER 4021 (DLF,HYF,IEF,MSUDF)

P44591509 | Calved: 1/12/24 | Tattoo: BE 4021

DM ALL AROUND 9046 ET (CHB)(DLF,HYF,IEF,MSUDF,MODF)
CHURCHILL RED THUNDER 133J ET (DLF,HYF,IEF,MSUDF,MODF,DFB)
P44267942 BR VALIDATED B413 6035 7098 (DLF,HYF,IEF,MSUDF,MODF,DFB)



K&B REDBRAND 417B (DLF,HYF,IEF,MSUDF,MODF,DFB)
H VIOLET 8220 (DOD)(DLF,HYF,IEF)
P43919010 H VIOLET 506 ET

LCX PERFECTO 11B ET (SOD)(DLF,HYF,IEF,MSUDF)
DM L1 DOMINETTE 301 ET (DLF,HYF,IEF,MSUDF)
EFBEEF BR VALIDATED B413 (SOD)(CHB)(DLF,HYF,IEF,MSUDF,MODF,DFB)
BR BENNETT 4R Y428 2101 6035 (HYPD,BP)

BMIS
432
BIIS
520
CHBS
125

CE	BW	WW	YW	DMI	SC	SCF	MM	M&G
5.0	1.7	55	81	0.3	1.5	21.6	25	53
MCE	MCW	UDDR	TEAT	CW	FAT	REA	MARB	
3.6	58	1.30	1.30	65	0.042	0.57	0.32	

Recommend for use on heifers. 4021 is deep heeled, wide based and very sound structured. He is big middled with good muscle expression down his top and out through a big square hip and quarter. Top 10% MARB.



9 | B RED THUNDER 4022 (DLF,HYF,IEF,MSUDF)

P44591508 | Calved: 1/12/24 | Tattoo: BE 4022

DM ALL AROUND 9046 ET (CHB)(DLF,HYF,IEF,MSUDF,MODF)
CHURCHILL RED THUNDER 133J ET (DLF,HYF,IEF,MSUDF,MODF,DFB)
P44267942 BR VALIDATED B413 6035 7098 (DLF,HYF,IEF,MSUDF,MODF,DFB)



JSS SACKETT 3221 (DLF,HYF,IEF,MSUDF)
H CAGNEY 7214
P43799142 H CAGNEY 5056 ET

LCX PERFECTO 11B ET (SOD)(DLF,HYF,IEF,MSUDF)
DM L1 DOMINETTE 301 ET (DLF,HYF,IEF,MSUDF)
EFBEEF BR VALIDATED B413 (SOD)(CHB)(DLF,HYF,IEF,MSUDF,MODF,DFB)
BR BENNETT 4R Y428 2101 6035 (HYPD,BP)

BMIS
519
BIIS
626
CHBS
148

CE	BW	WW	YW	DMI	SC	SCF	MM	M&G
-2.6	2.9	62	99	0.3	1.1	26.1	32	63
MCE	MCW	UDDR	TEAT	CW	FAT	REA	MARB	
3.7	88	1.30	1.30	65	0.002	0.63	0.48	

Width and muscle easily describe 4022. Big in his forearm and feature with lots of power yet still comes with length of spine and hip. Top 3% MARB, BMI, BII, SCF; Top 12% CHB.



10 | B RED THUNDER 4001 (DLF,HYF,IEF,MSUDF)

P44629318 | Calved: 1/4/24 | Tattoo: LE 4001

DM ALL AROUND 9046 ET (CHB)(DLF,HYF,IEF,MSUDF,MODF)
CHURCHILL RED THUNDER 133J ET (DLF,HYF,IEF,MSUDF,MODF,DFB)
P44267942 BR VALIDATED B413 6035 7098 (DLF,HYF,IEF,MSUDF,MODF,DFB)



NJW 98S R117 RIBEYE 88X ET (SOD)(DLF,HYF,IEF,MSUDF,MODF,DFB)
H MISS ADVANCE 5504 ET
43583487 HH MISS ADVANCE 8064U ET (DLF,HYF,IEF)

LCX PERFECTO 11B ET (SOD)(DLF,HYF,IEF,MSUDF)
DM L1 DOMINETTE 301 ET (DLF,HYF,IEF,MSUDF)
EFBEEF BR VALIDATED B413 (SOD)(CHB)(DLF,HYF,IEF,MSUDF,MODF,DFB)
BR BENNETT 4R Y428 2101 6035 (HYPD,BP)

BMIS
554
BIIS
645
CHBS
126

CE	BW	WW	YW	DMI	SC	SCF	MM	M&G
8.7	-0.3	44	61	0.1	0.9	30.3	31	53
MCE	MCW	UDDR	TEAT	CW	FAT	REA	MARB	
3.3	26	1.30	1.40	53	-0.018	0.48	0.44	

Recommended for use on hieifers. A complete, practical bull who is moderate framed. Top 1% BMI, MCW, SCF; Top 2% BII, FAT; Top 5% MARB, BW; Top 10% CE, TEAT.

YEARLING HEREFORD BULLS

11 | B RED THUNDER 4002 {DLF,HYF,IEF,MSUDF,DBP}

P44629174 | Calved: 1/5/24 | Tattoo: LE 4002

DM ALL AROUND 9046 ET {CHB}(DLF,HYF,IEF,MSUDF,MDP)
CHURCHILL RED THUNDER 133J ET {DLF,HYF,IEF,MSUDF,MDP,DBF}

P44267942 BR VALIDATED 8413 6035 7098 {DLF,HYF,IEF,MDP,DBF}



JCS ICON 4627 {DLF,HYF,IEF,MSUDF,DBP}

H SKI 4627 ALMA 1807 {DBP}

44052342 MCR MS RANCH HAND 408 158 ET

LCX PERFECTO 118 ET {SD01}(DLF,HYF,IEF,MSUDF)

DM L1 DOMINETTE 301 ET {DLF,HYF,IEF,MSUDF}

EFBEEF BR VALIDATED 8413 {SD01}(CHB)(DLF,HYF,IEF,MSUDF,MDP,DBF)

BR BENNETT 4R Y428 2101 6035 {HYP,DBP}

LANGFORDS 2205 ET {DLF,HYF,IEF,MDP,DBF}

JCS MISS POWER UP 9172 {DLF,HYF,IEF}

CHURCHILL RANCHER 592R {SD01}(DLF,IEF)

MCR 408 GOLD DOMINET 808 ET {DLF,HYF,IEF,MSUDF}

BMI\$

440

BII\$

533

CHB\$

154

CE	BW	WW	YW	DMI	SC	SCF	MM	M&G
6.7	1.2	59	98	0.3	1.7	20.4	36	65
MCE	MCW	UDDR	TEAT	CW	FAT	REA	MARB	
4.0	65	1.10	1.20	77	0.032	0.82	0.37	

Recommended for use on hiefters. 4002 is rugged and durable in his kind who stands on a stout bone and foot. Even with his extra bulk and density he still is long necked, long spined and travels with plenty of comfort. Top 10% CHB, Marb, REA, MCW, MM, SC; Top 20% BW, BMI, BII, CEM, MG.



LOT 11

12 | B DISTINCT 4082 {DLF,HYF,IEF,MSUDF,MDP}

P44591498 | Calved: 2/18/24 | Tattoo: BE 4082

NJW 1608 028X HISTORIC 81E ET {SD01}(DLF,HYF,IEF,MSUDF,MDP,DBF) CHURCHILL SENSATION 028X {SD01}(DLF,HYF,IEF,MDP,DBF)

H B DISTINCT {CHB}(DLF,HYF,IEF,MSUDF,MDP,DBF)

P44184682 H DS MISS SPICE 8082 {DLF,HYF,IEF,MSUDF,MDP,DBF}

NJW 735 38W DAYDREAM 160B {DLF,HYF,IEF,MSUDF}

LCX PERFECTO 118 ET {SD01}(DLF,HYF,IEF,MSUDF)

H BL MISS SPICE 613 ET {DLF,HYF,IEF,MSUDF}

EFBEEF RESOLUTE CEO {SD01}(CHB)(DLF,HYF,IEF,MSUDF,MDP,DBF)

H MS EXCEL 7117 {MDP}

P43799082 H MS 824 EXCEL 4158 ET {DLF,HYF,IEF,MSUDF,MDP}

KCF BENNETT REVOLUTION X51 {SD01}(CHB)(DLF,HYF,IEF,MDP,DBF)

EFBEEF 6378 KATE W484 {DLF,HYF,IEF,MSUDF}

NJW 735 W18 HOMETOWN 10Y ET {SD01}(CHB)(DLF,HYF,IEF,MSUDF,MDP)

H LADY EXCELL 824 ET {DLF,HYF,IEF}

BMI\$

442

BII\$

536

CHB\$

162

CE	BW	WW	YW	DMI	SC	SCF	MM	M&G
5.8	2.3	65	101	0.3	1.5	19.6	31	64
MCE	MCW	UDDR	TEAT	CW	FAT	REA	MARB	
2.5	106	1.45	1.55	88	0.037	0.85	0.31	

4082 has such a cool look about him. His structure and balance couples with a round rib cage, big top and square hip. Top 4% REA, TEAT; Top 6% CHB; Top 8% CW and UDDR; Top 10% SC; Top 13% MARB; Top 14% BII; Top 16% BMI; Top 18% WW, MG; Top 25% YW.



LOT 12

13 | B FEDERAL 4090 {DLF,HYF,IEF,MSUDF}

P44593837 | Calved: 2/29/24 | Tattoo: BE 4090

KBCR FEDERAL 498 {DLF,HYF,IEF,MSUDF}

KBCR 498 FEDERAL 634D {DLF,HYF,IEF,MSUDF,MDP,DBF}

P43734247 KBCR LADY 417B {DLF,HYF,IEF,DBP}

JET MR X818 {DLF,HYF,IEF}

/S LADY PROFICIENT 5147C

43567094 /S LADY JET 2170Z

C&L CT FEDERAL 485T 6Y {SD01}(DLF,HYF,IEF)

KBCR 755T GRACY 216Z {DLF,HYF,IEF,MSUDF}

C&L CT FEDERAL 485T 6Y {SD01}(DLF,HYF,IEF)

KBCR 719T LADY 204Z {HYP,DBP}

EFBEEF SCHU-LAR PROFICIENT N093 {SD01}(DLF,HYF,IEF,MSUDF)

JET MS Y368 {SD01}(DLF,HYF,IEF)

JET MR 2010

JET MS X501 {SD01}(DLF,HYF,IEF)

BMI\$

324

BII\$

384

CHB\$

86

CE	BW	WW	YW	DMI	SC	SCF	MM	M&G
8.6	0.6	60	95	0.1	0.9	16.0	26	56
MCE	MCW	UDDR	TEAT	CW	FAT	REA	MARB	
2.7	61	1.20	1.30	64	0.032	0.33	-0.16	

Recommended for use on hiefters. This Federal yearling is the youngest in the Hereford offering, but don't let that hold you up. 4090 only needs time. He is high quality, good built and is in the top 15% of CE and BW.

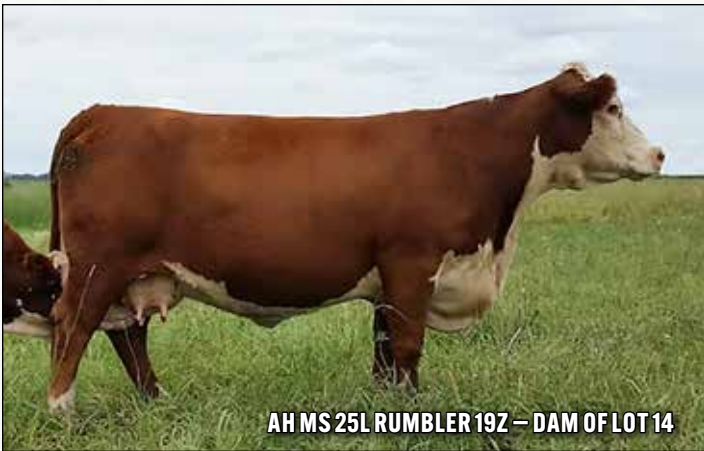


LOT 13

2-YEAR-OLD HEREFORD BULLS



LOT 14



AH MS 25L RUMBLER 19Z — DAM OF LOT 14

14 | BRADSHAW ENTICE 356 ET

P44568629 | Calved: 3/1/23 | Tattoo: LE 356

NJW 79Z Z311 ENDURE 1730 ET (S000)(CHB)(DLF)(HYF)(JES)(MSUD)(MOF)(DBF)		KCF BENNETT ENCORE Z311 ET (S000)(CHB)(DLF)(HYF)(JES)(MSUD)(MOF)(DBF)	
UPS ENTICE 9365 ET (CHB)(DLF)(HYF)(JES)(MSUD)(DBF)		BW 91H 100W RITA 79Z ET (DLF)(HYF)(JES)(MSUD)(MOF)	
P44058137 UPS MISS SENSATION 2277 ET (DLF)(HYF)(JES)(MOF)(DBF)		CHURCHILL SENSATION 028X (S000)(DLF)(HYF)(JES)(MOF)(DBF)	
		UPS JT MISS NEON 7811 1ET (DLF)(HYF)(JES)(DBP)	
BAR JZ RUMBLE 525X (DLF)(HYF)(JES)(DBP)		MSU TCF REVOLUTION 4R (S000)(DLF)(HYF)(JES)(MSUD)(DBC)	
AH MS 25L RUMBLER 19Z (S000)(DLF)(HYF)(JES)(MSUD)(DBF)		BAR JZ 434 LADY 733P (HAPP)	
P43292936 AH JDH MS 25L WRANGLER 34X ET (S000)(DLF)(HYF)(JES)		JDH 15 WRANGLER 25L (S000)(CHB)(DLF)(HYF)(JES)	
		AH QUEEN BELLE 14R (DLF)(HYF)(JES)	

CE	BW	WW	YW	DMI	SC	SCF	MM	M&G
1.0	3.7	68	111	0.6	1.5	20.9	32	66
MCE	MCW	UDDR	TEAT	CW	FAT	REA	MARB	
2.3	108	1.30	1.30	86	0.002	0.68	0.28	

True beef bull. Masculinity, heaviness of structure and durability describes this big testicled, Entice son. The Rumbler 19Z cow needs no introduction with the track record she has built for the Atkins program. Would add value in a purebred or commercial operation. He holds 13 EPDs in the top 20% of the breed — Top 10% WW, YW, CHB; Top 15% SC, MG, CW, FAT, REA, BMI, BII; Top 20% SCF, MILK, MARB!

2-YEAR-OLD HEREFORD BULLS

15 | B TYCOON 32053 {DLF,HYF,IEF,MSUDF,MDF}

P44476189 | Calved: 4/7/23 | Tattoo: BE 32053

H FHF ADVANCE 628 ET (CHB)(DLF,HYF,IEF,MSUDF,MDF,DFB)
K&B TYCOON 9606 ET (DLF,HYF,IEF,MSUDF,MDF)
44072585 K&B BELLA 2192 1ET (DOD)(DLF,HYF,IEF,MSUDF,MDF,DFB)



SHF ACCESS Y90 A216 (SOD)(DLF,HYF,IEF,MSUDF,MDF,DFB)
H HOPE 7032 (MSUDF,MDF)
P43799043 KCL 9050 HOPE 331N 945A ET (MSUDF)

HH ADVANCE 4075B ET (DLF,HYF,IEF,MSUDF,MDF)
FHF 408 RITA 21W (DLF,HYF,IEF,MSUDF)
K&B BANDIDO 8227U ET (CHB)(DLF,HYF,IEF)
K&B SWEET SALLY 5037 (DLF,HYF,IEF)

SHF LITERAL W18 Y90 (CHB)(DLF,HYF,IEF,MSUDF)
SHF MISTY 33T Y35 (DLF,HYF,IEF,DFB)
BOYD WORLDWIDE 9050 ET (SOD)(DLF,HYF,IEF,MSUDF,MDF,DFB)
GERBER 8020 HOPE 331N (DLF,HYF,IEF,MSUDF)

BMI\$
360
BI\$
422
CH\$
92

CE	BW	WW	YW	DMI	SC	SCF	MM	M&G
6.5	2.5	53	69	-0.2	0.6	17.5	35	61
MCE	MCW	UDDR	TEAT	CW	FAT	REA	MARB	
1.0	69	1.20	1.30	54	-0.018	0.50	0.01	

We have gotten along very well with the Tycoon 960G progeny. 32053 is one balanced, good looking rascal. Great structured yet heavy muscled and square built.



16 | B COMSTOCK 32032 {MDP}

P44467451 | Calved: 2/24/23 | Tattoo: BE 32032

BEHM 100W CUDAS 504C (SOD)(CHB)(DLF,HYF,IEF,MSUDF,MDF,DFB)
H GENOA COMSTOCK 7934 ET (CHB)(DLF,HYF,IEF,MSUDF,MDF)
P43857527 H MS 5139 ADVANCE 4006 ET (DLF,HYF,IEF,MSUDF)

LCX PERFECTO 11B ET (DLF,HYF,IEF,MSUDF)
H VIOLET 8122 (MDP)
P43916191 H VIOLET 520 ET (DLF,HYF,IEF,MSUDF,MDF)

NJW 735 M326 TRUST 100W ET (SOD)(CHB)(DLF,HYF,IEF,MSUDF,MDF,DFB)
BEHM R294 JASMAN102Y (DOD)(DLF,HYF,IEF,MSUDF)
NJW 985 R117 RIBEYE 88X ET (SOD)(DLF,HYF,IEF,MSUDF,MDF,DFB)
HH MISS ADVANCE 5139R ET (DLF,HYF,IEF)

NJW 985 R117 RIBEYE 88X ET (SOD)(DLF,HYF,IEF,MSUDF,MDF,DFB)
WLL ZOBY 3Z (DLF,HYF,IEF,MDF,DFB)
NJW 735 W18 HOMETOWN 10Y ET (SOD)(CHB)(DLF,HYF,IEF,MSUDF,MDF)
CRR D03 VIOLET 445 ET (DLF,HYF,IEF)

BMI\$
346
BI\$
432
CH\$
118

CE	BW	WW	YW	DMI	SC	SCF	MM	M&G
2.7	2.3	62	96	0.2	1.0	15.9	27	58
MCE	MCW	UDDR	TEAT	CW	FAT	REA	MARB	
0.8	89	1.30	1.30	59	-0.008	0.38	0.23	

A heavy pigmented, dark red bull who has the density and muscle to match. This Comstock son is big ribbed, big hipped and hits the surface with big feet. Not to mention, his docility makes him a favorite.



17 | B DISTINCT 32033 {DLF,HYF,IEF,MSUDF,MDF}

P44480985 | Calved: 3/2/23 | Tattoo: BE 32033

NJW 160B 028X HISTORIC 81E ET (DLF,HYF,IEF,MSUDF,MDF,DFB)
H B DISTINCT (CHB)(DLF,HYF,IEF,MSUDF,MDF,DFB)
P44184682 H DS MISS SPICE 8082 (DLF,HYF,IEF,MSUDF,MDF,DFB)



NJW 735 W18 HOMETOWN 10Y ET (SOD)(CHB)(DLF,HYF,IEF,MSUDF,MDF)
H 60 MS ADVANCE 6757 ET (MDP)
P43696433 GO MS 7195 ADVANCE X54 (DLF,HYF,IEF)

CHURCHILL SENSATION 028X (SOD)(DLF,HYF,IEF,MSUDF,DFB)
NJW 735 38W DAYDREAM 160B (DLF,HYF,IEF,MSUDF)
LCX PERFECTO 11B ET (DLF,HYF,IEF,MSUDF)
H BL MISS SPICE 613 ET (DLF,HYF,IEF,MSUDF)

SHF WONDER M326 W18 ET (SOD)(CHB)(DLF,HYF,IEF,MSUDF,DFB)
NJW P606 72N DAYDREAM 73S (DLF,HYF,IEF,MSUDF,MDF)
HH ADVANCE 7195T (SOD)(DLF,HYF,IEF)
GO MS PJ EXCEL T124 (DLF,HYF,IEF,MSUDF)

BMI\$
434
BI\$
508
CH\$
116

CE	BW	WW	YW	DMI	SC	SCF	MM	M&G
9.0	0.5	52	78	0.3	0.8	22.1	25	51
MCE	MCW	UDDR	TEAT	CW	FAT	REA	MARB	
0.9	59	1.60	1.80	74	0.052	0.65	0.13	

Recommended for use on heifers. A whole lot of power and muscle packed into this moderate-framed Distinct bull. 32033 is a high calving ease, low birth weight option that uniquely tandems it with extra shape and hip. Top 1% TEAT, UDDR; Top 5% MCW; Top 11% CE, BW, SCF; Top 20% REA, BMI.



2-YEAR-OLD HEREFORD BULLS



LOT 18

18 | B FEDERAL 32036 {DLF,HYF,IEF,MSUDF,MDF}

P44480984 | Calved: 3/3/23 | Tattoo: BE 32036

KBCR FEDERAL 498 {DLF,HYF,IEF,MSUDF,MDF}
KBCR 498 FEDERAL 634D {DLF,HYF,IEF,MSUDF,MDF,DBF}
P43734247 KBCR LADY 417B {DLF,HYF,IEF,DBP}

C&L CT FEDERAL 485T 6Y {S000}{DLF,HYF,IEF}
KBCR 755T GRACY 216Z {DLF,HYF,IEF,MSUDF}
C&L CT FEDERAL 485T 6Y {S000}{DLF,HYF,IEF}
KBCR 719T LADY 204Z {HYF,DBP}

NJW 98S R117 RIBEYE 88X ET {S000}{DLF,HYF,IEF,MSUDF,MDF,DBF}
H WR VAL 5520 ET
P43583492 H RW LADY REDEEM 1231 ET {DLF,HYF,IEF}

SHF R18 EYE M326 R117 {S000}{CHB}{DLF,HYF,IEF}
NJW 9126J DEW DOMINO 98S {0000}{DLF,HYF,IEF}
KJ HVH 33N REDEEM 485T ET {S000}{DLF,HYF,IEF,MDF,DBF}
JSF 12N LADY VAL 9T {DLF,HYF,IEF}

BMIS
369
BIIS
435
CHBS
92

CE	BW	WW	YW	DMI	SC	SCF	MM	M&G
8.0	0.8	63	98	0.0	1.0	18.7	25	56
MCE	MCW	UDDR	TEAT	CW	FAT	REA	MARB	
2.7	78	1.40	1.50	64	0.012	0.24	-0.14	

Recommended for use of heifers. Dark red, heavy structured bull that is big ribbed. A masculine, low birth high calving ease bull who is square and sound. A big testicled bull. Top 4% TEAT; Top 10% UDDR; Top 15% CE, BW.



LOT 19

19 | B DISTINCT 32029 {DLF,HYF,IEF,MSUDF,MDF}

P44480988 | Calved: 2/23/23 | Tattoo: BE 32029

NJW 160B 028X HISTORIC 81E ET {DLF,HYF,IEF,MSUDF,MDF,DBF}
H B DISTINCT {CHB}{DLF,HYF,IEF,MSUDF,MDF,DBF}
P44184682 H DS MISS SPICE 8082 {DLF,HYF,IEF,MSUDF,MDF,DBF}



H H FAST FORWARD 2268Z ET {DLF,HYF,IEF}
H CAGNEY 7066
P43799054 H CAGNEY 5017 ET

CHURCHILL SENSATION 028X {S000}{DLF,HYF,IEF,MDF,DBF}
NJW 73S 38W DAYDREAM 160B {DLF,HYF,IEF,MSUDF}
LCX PERFECTO 11B ET {DLF,HYF,IEF,MSUDF}
H BL MISS SPICE 613 ET {DLF,HYF,IEF,MSUDF}

KJ HVH 33N REDEEM 485T ET {S000}{DLF,HYF,IEF,MDF,DBF}
HH MISS ADVANCE 6041S ET {DLF,HYF,IEF}
NJW 98S R117 RIBEYE 88X ET {S000}{DLF,HYF,IEF,MSUDF,MDF,DBF}
A/S CAGNEY 707 {DLF,HYF,IEF}

BMIS
444
BIIS
522
CHBS
112

CE	BW	WW	YW	DMI	SC	SCF	MM	M&G
6.6	1.5	55	86	-0.1	0.9	22.6	25	53
MCE	MCW	UDDR	TEAT	CW	FAT	REA	MARB	
2.0	92	1.60	1.90	61	0.052	0.51	0.14	

When this bull strikes a pose its lights out! Muscle, muscle, muscle this bull is powerful. Yet, he doesn't sacrifice smoothness of build or soundness of structure. Top 1% TEAT, UDDR; Top 15% BMI, SCF, DMI; Top 20% BII.



LOT 20

20 | B BELL RINGER 32058 {DLF,HYF,IEF,MSUDF,MDF}

P44476197 | Calved: 4/13/23 | Tattoo: BE 32058

BR BELLE AIR 6011 {CHB}{DLF,HYF,IEF,MSUDF,DBF}
H BELL RINGER 8459 ET {CHB}{DLF,HYF,IEF,MDF,DBF}
P43915089 BRL ENVY 401A {DLF,HYF,IEF,MSUDF}



SHF ACCESS Y90 A216 {S000}{DLF,HYF,IEF,MSUDF,MDF,DBF}
H MS SW VICTOR 6009 {MDF}
43683400 JDH MS SW VICTOR 3Y 103B

BAR S LHF 028 240 {S000}{CHB}{DLF,HYF,IEF}
BR BELLE 4082 ET {DLF,HYF,IEF,MSUDF}
CRR 719 TULO 928 {S000}{DLF,HYF,IEF}
BRL CATE W4100 {HYF}

SHF LITERAL W18 Y90 {CHB}{DLF,HYF,IEF,MDF}
SHF MISTY 33T Y35 {DLF,HYF,IEF,DBP}
JDH AH 719T 3Y ET {DLF,HYF,IEF}
AH JDH MS RED VIOLET 5W ET

BMIS
442
BIIS
531
CHBS
149

CE	BW	WW	YW	DMI	SC	SCF	MM	M&G
-1.9	4.0	65	100	0.1	1.5	20.3	29	61
MCE	MCW	UDDR	TEAT	CW	FAT	REA	MARB	
-0.6	77	1.20	1.20	86	0.052	0.78	0.20	

Extended front end, long spined and big bodied. This Bell Ringer son is a growthy, large framed bull. His dam, 6009, continues to produce for us as we have a full brother that works as a herd bull here in La Belle. Top 20% WW, SC, CW, REA, BMI, BII, CHB.

2-YEAR-OLD HEREFORD BULLS

21 | B PERFECTO 32001 ET

PENDING | Calved: 2/1/23

NJW 98S R117 RIBEYE 88X ET (S000)(DLF,HYF,IEF,MSUDF,MDF,DBF)
LCX PERFECTO 11B ET (S000)(DLF,HYF,IEF,MSUDF)
 P43517583 WLL ZOXY 3Z (DLF,HYF,IEF,MDF,DBF)

SHF R18 EYE M326 R117 (S000)(CHB)(DLF,HYF,IEF)
 NJW 9126J DEW DOMINO 98S (D000)(DLF,HYF,IEF)
 TH 122711 VICTOR 719T (S000)(DLF,HYF,IEF,MSUDF,MDF,DBF)
 WLL VENUS 19X (HYP)

CRR ABOUT TIME 743 (S000)(DLF,HYF,IEF,MDF)
H BL MISS SPICE 608 ET
 P43713527 H AC MARIANNE 231 ET (DLF,HYF,IEF,MDF,DBF)

THM DURANGO 4037 (S000)(DLF,HYF,IEF)
 CRR D03 CASSIE 206 (DLF,HYF,IEF)
 GOLDEN OAK OUTCROSS 18U (S000)(CHB)(DLF,HYF,IEF,MSUDF)
 H VICTORY 600 ET (DLF,IEF,DBP)

	CE	BW	WW	YW	DMI	SC	SCF	MM	M&G	MCE
Sire	5.1	1.5	67	95	0.1	0.4	25.5	36	69	4.5
Dam	1.5	3.8	55	87	0.0	0.9	17.3	25	52	-1.2
	MCW	UDDR	TEAT	CW	FAT	REA	MARB	BMIS	BIIS	CHBS
Sire	88	1.20	1.20	58	-0.048	0.58	0.02	487	568	104
Dam	104	1.30	1.20	58	-0.038	0.48	-0.07	357	416	94

Direct son of the infamous Perfecto 11B. Here is a good looking balanced bull that is structurally built for the long haul. 32001's maternal brother was a sale highlight in our 2024 Bull Sale and is now working at the T Heart Ranch in Oklahoma.



22 | B FEDERAL 32041

{DLF,HYF,IEF,MSUDF,MDF} | P44476155 | Calved: 3/19/23 | Tattoo: BE 32041

KBCR FEDERAL 498 (DLF,HYF,IEF,MSUDF)
KBCR 498 FEDERAL 634D (DLF,HYF,IEF,MSUDF,MDF,DBF)
 P43734247 KBCR LADY 417B (DLF,HYF,IEF,DBP)

C&L CT FEDERAL 485T 6Y (S000)(DLF,HYF,IEF)
 KBCR 755T GRACY 216Z (DLF,HYF,IEF,MSUDF)
 C&L CT FEDERAL 485T 6Y (S000)(DLF,HYF,IEF)
 KBCR 719T LADY 204Z (HYP,DBP)

GO EXCEL L18 (S000)(DLF,HYF,IEF)
H WR TABITHA 3004 ET (DLF,HYF,IEF)
 43384169 K&B SWEET SALLY 5017 (S000)(DLF,HYF,IEF)

DD EXCEL DESIGN 40 (S000)(HYP)
 GO MS 124 ADVANCE 7005 (IEP)
 PW VICTOR BOOMER P606 (S000)(DLF,HYF,IEF,MDF)
 K&B MAXINE 3235 (IEP)

BMIS
359
BIIS
417
CHBS
95

CE	BW	WW	YW	DMI	SC	SCF	MM	M&G
5.4	1.8	59	92	0.0	1.2	17.7	25	54
MCE	MCW	UDDR	TEAT	CW	FAT	REA	MARB	
3.7	80	1.40	1.45	71	0.002	0.28	-0.18	

32041's dam is a 2013 model and has yet to quit. If that doesn't speak longevity I'm not sure what does. Built to last for many breeding seasons. This Federal son is a complete, wide chested, thick ended bull. Comfortable as he strides out. Top 15% TEAT, UDDR, FAT, DMI.



FLUSH



LOT 23



H B DISTINCT — SON OF LOT 23

23 | H DS MISS SPICE 8082 (DLF,HYF,IEF,MSUDF,MDF,DBF)

FLUSH | P43915164 | Calved: 2/21/18 | Tattoo: BE 8082

NJW 98S R117 RIBEYE 88X ET (S000)(DLF,HYF,IEF,MSUDF,MDF,DBF) SHF RIB EYE M326 R117 (S000)(CHB)(DLF,HYF,IEF)
 LCX PERFECTO 11B ET (DLF,HYF,IEF,MSUDF) NJW 9126J DEW DOMINO 98S (D000)(DLF,HYF,IEF)
 P43517583 WLL ZO EY 3Z (DLF,HYF,IEF,MDF,DBF) TH 122711 VICTOR 719T (S000)(DLF,HYF,IEF,MSUDF,MDF,DBF)
 PERKS 144U RIGHT TRACK 2040 (S000)(DLF,HYF,IEF,MDF) TH 75J 243R BAILOUT 144U ET (S000)(DLF,HYF,IEF)
 H BL MISS SPICE 613 ET (DLF,HYF,IEF,MSUDF) TH 23S 45P DUCHESS 123W (DLF,HYF,IEF)
 P43713524 H AC MARIANNE 231 ET (DLF,HYF,IEF,MDF,DBF) GOLDEN OAK OUTCROSS 18U (S000)(CHB)(DLF,HYF,IEF,MSUDF)
 H VICTORY 600 ET (DLF,IEF,DBP)

BMIS
439
BIIS
529
CHBS
138

CE	BW	WW	YW	DMI	SC	SCF	MM	M&G
6.0	1.6	70	102	0.1	1.5	20.3	31	66
MCE	MCW	UDDR	TEAT	CW	FAT	REA	MARB	
6.9	105	1.50	1.50	73	-0.028	0.74	0.17	

An opportunity we have never offered. The chance to flush the mother of H B DISTINCT! Proven would be an understatement when it comes to 8082. With the option to flush her to the bull of your choice the possibilities are endless. She calved in February and is ready to flush at TransOva in Chillicothe. The buyer will be guaranteed six (6) transferable embryos with no limit.

YEARLING ANGUS BULLS

HOFFMAN THEDFORD

ANGUS | 19820180 | Calved: 1/28/20 | Tattoo: 61

CONNEALY BLACK GRANITE

BAR R JET BLACK 5063

18389838 BAR R IRIS ANITA 0113

ANGUS

KG SOLUTION 0018

HA RITO LADY 3839

17651108 HA RITO LADY 0622

CONNEALY CONSENSUS 7229

EURA ELGA OF CONANGA 9109

SITZ UPWARD 307R

BAR R ANITA 7081

MOGCK SURE SHOT

KG RITO LADY 8724

HA PROGRAM 5652

HA RITO LADY 8395

\$M	86
\$W	80
\$F	130
\$G	51
\$B	181
\$C	321

CE	BW	WW	YW	SC	DOC	HP
14	0.5	78	143	I+2.29	I+18	I+16.0
MILK	\$E	RE	FAT	CLAW	ANGLE	
34	-19	I+.94	I-.007	I+.57	I+.37	

Thedford has already written a long story with his success. A true calving ease sire with exceptional growth and performance. His daughters have great udders and mothering ability.

SIRE OF LOTS 24-29



HOFFMAN THEDFORD



LOT 24

24 | BRADSHAW THEDFORD 4204

BAR R JET BLACK 5063

HOFFMAN THEDFORD

+*19820180 HA RITO LADY 3839

ANGUS

MUSGRAVE BIG SKY

HOFFMAN DONNA 7028

+*18839965 FLAG DONNA 10678

CONNEALY BLACK GRANITE

BAR R IRIS ANITA 0113

KG SOLUTION 0018

HA RITO LADY 0622

CONNEALY EARNAN 076E

SAV PRIMROSE 7861

SCR RIGHT CROSS 70024

SCR DONNA 80823

\$M	69
\$W	83
\$F	111
\$G	48
\$B	159
\$C	275

CE	BW	WW	YW	SC	DOC	HP
15	0.6	80	145	1.47	14	15.0
MILK	\$E	RE	FAT	CLAW	ANGLE	
36	-33	0.87	0.003	0.59	0.45	

Recommended for use on heifers. 4204 never gives a bad look and he's definitely a favorite around here. His presence, depth of body and balance immediately grab your attention. A big testicled bull with muscle and great structure.



MARCH 21, 2025



BRADSHAW RANCH BULL SALE

YEARLING ANGUS BULLS



25 | BRADSHAW THEDFORD 4205

BAR R JET BLACK 5063

HOFFMAN THEDFORD

+*19820180 HA RITO LADY 3839

ANGUS

MUSGRAVE BIG SKY

HOFFMAN DONNA 7028

+*18839965 FLAG DONNA 10678

CONNEALY BLACK GRANITE

BAR R IRIS ANITA 0113

KG SOLUTION 0018

HA RITO LADY 0622

CONNEALY EARNAN 076E

SAV PRIMROSE 7861

SCR RIGHT CROSS 70024

SCR DONNA 80823

\$M	69
\$W	73
\$F	111
\$G	48
\$B	158
\$C	274

CE	BW	WW	YW	SC	DOC	HP
I+6	I+2.9	I+81	I+144	I+1.61	I+15	I+14.8
MILK	\$E	RE	FAT	CLAW	ANGLE	
I+29	-31	I+.76	I-.017	I+.53	I+.41	

This flush was very consistent and that proves the maternal strength behind it. 4205 is a complete bull that is big topped, big hipped and wide based. Masculine and rugged from end to end. A big testicled bull.

26 | BRADSHAW THEDFORD 4209

BAR R JET BLACK 5063

HOFFMAN THEDFORD

+*19820180 HA RITO LADY 3839

ANGUS

MUSGRAVE BIG SKY

HOFFMAN DONNA 7028

+*18839965 FLAG DONNA 10678

CONNEALY BLACK GRANITE

BAR R IRIS ANITA 0113

KG SOLUTION 0018

HA RITO LADY 0622

CONNEALY EARNAN 076E

SAV PRIMROSE 7861

SCR RIGHT CROSS 70024

SCR DONNA 80823

\$M	73
\$W	83
\$F	114
\$G	48
\$B	163
\$C	284

CE	BW	WW	YW	SC	DOC	HP
3	4.4	93	166	2.09	19	16.4
MILK	\$E	RE	FAT	CLAW	ANGLE	
36	-42	0.57	-0.025	0.53	0.49	

Big herd bull prospect right here. 4209 offers a lot of growth and performance with huge feet and a durable look. A genuine beef bull you can find a lot of value in. The heaviest 205 weight of our entire calf crop. A big testicled bull.



YEARLING ANGUS BULLS

27 | BRADSHAW THEDFORD 4218

BAR R JET BLACK 5063

HOFFMAN THEDFORD

+*19820180 HA RITO LADY 3839

ANGUSGS
Present by Angus Genetics

ELLINGSON CHAPS 4095

HOFFMAN KFL BARBARAMERE 8520

+*19128994 HOFFMAN BARBARAMERE 5026

CONNELLY BLACK GRANITE

BAR R IRIS ANITA 0113

KG SOLUTION 0018

HA RITO LADY 0622

SAV RESOURCE 1441

EA BLACKCAP 0360

MUSGRAVE BIG SKY

SITZ BARBARAMERE NELL X23

\$M	80
\$W	77
\$F	109
\$G	47
\$B	156
\$C	282

CE	BW	WW	YW	SC	DOC	HP
I+8	I+1.7	I+77	I+138	I+1.66	I+17	I+13.3
MILK	\$E	RE	FAT	CLAW	ANGLE	
I+29	-18	I+79	I-0.01	I+4.44	I+37	

This bull's design and build are quick to catch your eye. More moderate in his frame yet still big centered, high quality and put together very well.



28 | BRADSHAW THEDFORD 4219

BAR R JET BLACK 5063

HOFFMAN THEDFORD

+*19820180 HA RITO LADY 3839

ANGUSGS
Present by Angus Genetics

ELLINGSON CHAPS 4095

HOFFMAN KFL BARBARAMERE 8520

+*19128994 HOFFMAN BARBARAMERE 5026

CONNELLY BLACK GRANITE

BAR R IRIS ANITA 0113

KG SOLUTION 0018

HA RITO LADY 0622

SAV RESOURCE 1441

EA BLACKCAP 0360

MUSGRAVE BIG SKY

SITZ BARBARAMERE NELL X23

\$M	80
\$W	77
\$F	109
\$G	47
\$B	156
\$C	282

CE	BW	WW	YW	SC	DOC	HP
I+8	I+1.7	I+77	I+138	I+1.66	I+17	I+13.3
MILK	\$E	RE	FAT	CLAW	ANGLE	
I+29	-18	I+79	I-0.01	I+4.44	I+37	

The high performing 8520 son comes with added length and style. He's smooth built, clean jointed and big testicled.



29 | BRADSHAW THEDFORD 4062

BAR R JET BLACK 5063

HOFFMAN THEDFORD

+*19820180 HA RITO LADY 3839

ANGUSGS
Present by Angus Genetics

PVF INSIGHT 0129

HOFFMAN RACHEL 7655

18851513 3210 RACHEL 695

CONNELLY BLACK GRANITE

BAR R IRIS ANITA 0113

KG SOLUTION 0018

HA RITO LADY 0622

SAV BRILLIANCE 8077

PVF MISSIE 790

3210 RIGHT TIME D919

3210 RACHEL 862

\$M	48
\$W	77
\$F	147
\$G	36
\$B	184
\$C	287

CE	BW	WW	YW	SC	DOC	HP
8	3.3	91	162	1.88	22	9.9
MILK	\$E	RE	FAT	CLAW	ANGLE	
30	-50	1.23	-0.016	0.46	0.49	

Recommended for use on heifers. Nice, solid angus bull that will only continue to get better as he matures. He's well made and long necked.



YEARLING ANGUS BULLS

SIRE OF LOTS 30-42



HOFFMAN BAR NONE

HOFFMAN BAR NONE

ANGUS | 20307818 | Calved: 9/2/21 | Tattoo: 1818

BASIN PAYWEIGHT 1682
DEER VALLEY GROWTH FUND
18827828 DEER VALLEY RITA 36113

ANGUS GS
Presented by Nogen Genetics

KG SOLUTION 0018
HA RITO LADY 3839
17651108 HA RITO LADY 0622

BASIN PAYWEIGHT 0065
21AR O LASS 7017
PLATTEMERE WEIGH UP K360
DEER VALLEY RITA 9457

MOGCK SURE SHOT
KG RITO LADY 8724
HA PROGRAM 5652
HA RITO LADY 8395

\$M	108
\$W	94
\$F	114
\$G	49
\$B	163
\$C	319

CE	BW	WW	YW	SC	DOC	HP
11	0.2	89	151	I+7.3	I+24	I+16.9
MILK	\$E	RE	FAT	CLAW	ANGLE	
28	-11	I+.75	I+.060	I+.54	I+.40	

Bar None gave us as consistent of a calf crop as we have ever had. He makes them thick, functional and balanced. He is one of the best sons of HA Rito Lady 3839 to date and his sons that have sold so far are in high demand.



LOT 30

30 | BRADSHAW BAR NONE 4005

*21145399 | Calved: 1/12/24 | Tattoo: 4005

DEER VALLEY GROWTH FUND
HOFFMAN BAR NONE
+*20307818 HA RITO LADY 3839

ANGUS GS
Presented by Nogen Genetics

YOUNG DALE BELIEVE 46B
HOFFMAN EVERELDA 7093
+*18799129 OSU EVERELDA INTENSE 0186 C

BASIN PAYWEIGHT 1682
DEER VALLEY RITA 36113
KG SOLUTION 0018
HA RITO LADY 0622

YOUNG DALE XCALIBER 32X
YOUNG DALE GRACE 126Z
OSU CURRENCY 8173
LIMESTONE EVER INTENSE S292

\$M	79
\$W	73
\$F	81
\$G	46
\$B	126
\$C	242

CE	BW	WW	YW	SC	DOC	HP
9	-0.4	79	133	0.17	30	12.3
MILK	\$E	RE	FAT	CLAW	ANGLE	
18	-17	0.39	0.071	0.45	0.34	

Recommended for use on heifers. A true man! Thick and powerful from every angle. He's wide down his top and square out through his hip yet doesn't sacrifice structure or a balanced look. His docility and personality only add to his value!



YEARLING ANGUS BULLS

31 | BRADSHAW BAR NONE 4063

DEER VALLEY GROWTH FUND
HOFFMAN BAR NONE
+*20307818 HA RITO LADY 3839

ANGUS
Present by Angus Genetics

T&E ACCLAIM 751
BRADSHAW FAVORITE 0322
19849470 HOFFMAN FAVORITE 8052

BASIN PAYWEIGHT 1682
DEER VALLEY RITA 36113
KG SOLUTION 0018
HA RITO LADY 0622

JINDRA ACCLAIM
T&E LUCY 522
HA PRIME CUT 4493
SITZ JLS FAVORITE W07

\$M	79
\$W	79
\$F	110
\$G	49
\$B	159
\$C	285

CE	BW	WW	YW	SC	DOC	HP
4	2.6	89	147	0.48	21	9.4
MILK	\$E	RE	FAT	CLAW	ANGLE	
21	-21	0.95	-0.014	0.34	0.30	

He's really stout, massive and thick from end to end. Bold sprung, correct in his lines and has a useful look about him. We like this one a great deal. Top 10% CEM; Top 20% WW, YW, \$M, \$F.



LOT 31

32 | BRADSHAW BAR NONE 4016

DEER VALLEY GROWTH FUND
HOFFMAN BAR NONE
+*20307818 HA RITO LADY 3839

ANGUS
Present by Angus Genetics

MUSGRAVE BIG SKY
HOFFMAN DONNA 7028
+*18839965 FLAG DONNA 10678

BASIN PAYWEIGHT 1682
DEER VALLEY RITA 36113
KG SOLUTION 0018
HA RITO LADY 0622

CONNELLY EARNAN 076E
SAV PRIMROSE 7861
SCR RIGHT CROSS 70024
SCR DONNA 80823

\$M	95
\$W	82
\$F	92
\$G	55
\$B	148
\$C	287

CE	BW	WW	YW	SC	DOC	HP
6	2.6	88	146	0.71	19	17.8
MILK	\$E	RE	FAT	CLAW	ANGLE	
25	-22	0.53	0.017	0.50	0.39	

Recommended for use on heifers. A genuine good beef bull who is moderate framed and still offers a lot of performance with his extra power, mass and volume. He is thick ended and shapely. Maternal brother to Lots 24, 25, and 26. Top 1% CEM; Top 15% WW, \$M, \$W, \$F. Top 20% YW.



LOT 32

33 | BRADSHAW BAR NONE 4019

DEER VALLEY GROWTH FUND
HOFFMAN BAR NONE
+*20307818 HA RITO LADY 3839

ANGUS
Present by Angus Genetics

JINDRA DOUBLE VISION
HOFFMAN PRIMROSE 6171
#+18470465 SAV PRIMROSE 7861

BASIN PAYWEIGHT 1682
DEER VALLEY RITA 36113
KG SOLUTION 0018
HA RITO LADY 0622

CONNELLY REFLECTION
HOFF RACHEL 8312 405
SAF 598 BANDO 5175
SAV PRIMROSE 8244

\$M	75
\$W	72
\$F	111
\$G	51
\$B	162
\$C	285

CE	BW	WW	YW	SC	DOC	HP
9	1.2	75	130	-0.04	26	12.0
MILK	\$E	RE	FAT	CLAW	ANGLE	
25	-19	0.69	0.054	0.53	0.42	

This bull has a strong cow family. Dam 6171 is a maternal sister to Musgrave Big Sky. Practical, sound structured and a big framed productive bull.



LOT 33

YEARLING ANGUS BULLS



LOT 34

34 | BRADSHAW BAR NONE 4015

DEER VALLEY GROWTH FUND
HOFFMAN BAR NONE
+*20307818 HA RITO LADY 3839



PVF INSIGHT 0129
HOFFMAN EOLA 7613
18795949 3210 EOLA 665

BASIN PAYWEIGHT 1682
DEER VALLEY RITA 36113
KG SOLUTION 0018
HA RITO LADY 0622

SAV BRILLIANCE 8077
PVF MISSIE 790
3210 RIGHT TIME D919
3210 EOLA 32

\$M	91
\$W	82
\$F	88
\$G	35
\$B	123
\$C	251

CE	BW	WW	YW	SC	DOC	HP
9	0.5	71	110	0.46	27	13.7
MILK	\$E	RE	FAT	CLAW	ANGLE	
31	-6	1.4	-0.014	0.52	0.47	

Recommended for use on heifers. Powerful. Big backed, square hipped and thick down through his quarter. A good looking bull who is packed with muscle all the way throughout.



LOT 35

35 | BRADSHAW BAR NONE 4008

DEER VALLEY GROWTH FUND
HOFFMAN BAR NONE
+*20307818 HA RITO LADY 3839



MUSGRAVE BIG SKY
HOFFMAN BLACKCAP 6151
18469631 SITZ BLACKCAP 321U

BASIN PAYWEIGHT 1682
DEER VALLEY RITA 36113
KG SOLUTION 0018
HA RITO LADY 0622

CONNELLY EARNAN 076E
SAV PRIMROSE 7861
OCC EMBLAZON 854E
PINE COULEE BLACKCAP G 3253

\$M	94
\$W	78
\$F	115
\$G	54
\$B	169
\$C	313

CE	BW	WW	YW	SC	DOC	HP
13	-0.7	67	125	0.28	27	16.5
MILK	\$E	RE	FAT	CLAW	ANGLE	
35	-9	0.83	0.022	0.47	0.48	

Recommended for use on heifers. Double digit calving ease and negative birth weight. A bigger framed, long bodied bull who reads with utility and usefulness in his structure and build. His extension and depth of rib give him a solid, practical look. Top 4% \$M; Top 10% CEM; Top 15% CED, BW, \$E.



LOT 36

36 | BRADSHAW BAR NONE 4027

DEER VALLEY GROWTH FUND
HOFFMAN BAR NONE
+*20307818 HA RITO LADY 3839



RB ACTIVE DUTY 010
HOFFMAN PRISCILLA 670
18623393 SAV PRISCILLA 7374

BASIN PAYWEIGHT 1682
DEER VALLEY RITA 36113
KG SOLUTION 0018
HA RITO LADY 0622

LCC NEW STANDARD
BA LADY 6807 305
SAV 8180 TRAVELER 004
SAV PRISCILLA 3346

\$M	97
\$W	80
\$F	110
\$G	49
\$B	159
\$C	303

CE	BW	WW	YW	SC	DOC	HP
7	1.2	75	125	1.07	7	17.7
MILK	\$E	RE	FAT	CLAW	ANGLE	
25	0	0.78	0.038	0.49	0.40	

Wide topped, square hipped offering real muscle throughout. Even with the extra power he doesn't sacrifice a smooth design and added look. A big testicled bull. Top 10% \$M; Top 15% WW, YW, CEM, \$F; Top 20% ANGLE.

YEARLING ANGUS BULLS



LOT 37

37 | BRADSHAW BAR NONE 4003

DEER VALLEY GROWTH FUND

HOFFMAN BAR NONE

*20307818 HA RITO LADY 3839

ANGUS
Presented by Angus Genetics

SAV RESOURCE 1441

HOFFMAN PAMELA 596

#18669915 3210 PAMELA 103

BASIN PAYWEIGHT 1682

DEER VALLEY RITA 36113

KG SOLUTION 0018

HA RITO LADY 0622

RITO 707 OF IDEAL 34077075

SAV BLACKCAP MAY 4136

CONNELLY THUNDER

BASIN PAMELA 21U3

\$M	108
\$W	74
\$F	102
\$G	39
\$B	142
\$C	292

CE	BW	WW	YW	SC	DOC	HP
12	-0.9	66	107	0.22	18	19.5
MILK	\$E	RE	FAT	CLAW	ANGLE	
25	4	0.82	0.048	0.41	0.42	

Recommended for use on heifers. We're really high on this one! He's powerful, big middled yet still square and true off both ends while still giving a balanced, complete look. This big testicled bull is hard to poke a hole in. Top 5% SM; Top 10% CEM, ANGLE; Top 15% HP; Top 20% \$F.



MARCH 21, 2025



BRADSHAW RANCH BULL SALE

YEARLING ANGUS BULLS



LOT 38

38 | BRADSHAW BAR NONE 4026

DEER VALLEY GROWTH FUND
HOFFMAN BAR NONE
 +*20307818 HA RITO LADY 3839
ANGUS
 HA VALUE ADDED 7578
BRADSHAW ELLUNAS ELITE 0207
 19825259 HOFFMAN ELLUNAS ELITE 6120

BASIN PAYWEIGHT 1682
 DEER VALLEY RITA 36113
 KG SOLUTION 0018
 HA RITO LADY 0622
 HA PRIME CUT 4493
 HA RITO LADY 3839
 TEX DEMAND 2791
 SITZ ELLUNAS ELITE 335U

\$M	85
\$W	79
\$F	103
\$G	41
\$B	144
\$C	272

CE	BW	WW	YW	SC	DOC	HP
5	1.4	86	141	0.79	27	12.0
MILK	\$E	RE	FAT	CLAW	ANGLE	
17	-11	0.52	0.012	0.58	0.33	

A lot of things to like about this bull. He's good looking, big bodied and has the rugged feature to match. A very square built bull. Top 5% CEM; Top 10% \$M; Top 20% ANGLE.

39 | BRADSHAW BAR NONE 4024

DEER VALLEY GROWTH FUND
HOFFMAN BAR NONE
 +*20307818 HA RITO LADY 3839
ANGUS
 HA COWBOY UP 5405
HOFFMAN HENRIETTA 8534
 19124989 SITZ HENRIETTA PRIDE 6177

BASIN PAYWEIGHT 1682
 DEER VALLEY RITA 36113
 KG SOLUTION 0018
 HA RITO LADY 0622
 HA OUTSIDE 3008
 HA BLACKCAP LADY 1602
 CONNEALY THUNDER
 SITZ HENRIETTA PRIDE 81M

\$M	78
\$W	54
\$F	96
\$G	40
\$B	136
\$C	254

CE	BW	WW	YW	SC	DOC	HP
7	1.2	62	114	I+.62	I+.21	I+.14.6
MILK	\$E	RE	FAT	CLAW	ANGLE	
25	-6	I+.65	I+.023	I+.52	I+.44	

A genuine beef bull. Burly, masculine who's heavy muscled and thick throughout. He's got big square feet and is sound structured. Not to mention his quiet disposition. Top 15% CEM; Top 20% \$M.



LOT 39

YEARLING ANGUS BULLS



PAYNE EMBLYNETTE 7102 – GRANDAM OF LOT 40

40 | BRADSHAW BAR NONE 4038

*21145312 | Calved: 2/3/24 | Tattoo: 4038

DEER VALLEY GROWTH FUND

HOFFMAN BAR NONE

+*20307818 HA RITO LADY 3839

ANGUS

SITZ BARRICADE 632F

BRADSHAW EMBLYNETTE 2130 ET

+*20566826 PAYNE EMBLYNETTE 7102

BASIN PAYWEIGHT 1682

DEER VALLEY RITA 36113

KG SOLUTION 0018

HA RITO LADY 0622

SITZ STELLAR 726D

SITZ BARBARAMERE NELL 765D

CONNELLY BLACK GRANITE

PAR EMBLYNETTE 8035

\$M	87
\$W	75
\$F	112
\$G	45
\$B	157
\$C	291

CE	BW	WW	YW	SC	DOC	HP
5	2.4	87	145	I+1.04	I+17	I+14.5
MILK	\$E	RE	FAT	CLAW	ANGLE	
23	-16	I+.55	I+.075	I+.47	I+.44	

The Barricade daughters have been lights out in production. Match that with the impressive Emblynette and Rito Lady 3839 cow families, we feel this bull really came together. He's easy to look at, smooth designed and is great on his feet and legs. A genuine bull raised on a first calf heifer who will only get better with time. Top 10% WW, \$M; Top 15% YW; Top 20% SW, \$F.



LOT 40

41 | BRADSHAW BAR NONE 4061

21199739 | Calved: 2/28/24 | Tattoo: 4061

DEER VALLEY GROWTH FUND

HOFFMAN BAR NONE

20307818 HA RITO LADY 3839

HA CHAIRMAN 7649

BRADSHAW BLACKCAP 0205

19825258 HOFFMAN BLACKCAP 7161

BASIN PAYWEIGHT 1682

DEER VALLEY RITA 36113

KG SOLUTION 0018

HA RITO LADY 0622

HA PRIME CUT 4493

HA BLACKCAP LADY 1602

YOUNG DALE BELIEVE 468

SITZ BLACKCAP 321U

\$M	86
\$W	75
\$F	99
\$G	42
\$B	141
\$C	269

CE	BW	WW	YW	SC	DOC	HP
I+9	I+.4	I+73	I+127	I+.81	I+19	I+14.8
MILK	\$E	RE	FAT	CLAW	ANGLE	
I+26	-13	I+.65	I+.042	I+.43	I+.38	

Recommended for use on heifers. A powerful, big ribbed Bar None son who is packed full of muscle down his top and out through his hip and stifle.



LOT 41

YEARLING ANGUS BULLS



LOT 42

42 | BRADSHAW BAR NONE 4048

21190958 | Calved: 3/2/24 | Tattoo: 4048

DEER VALLEY GROWTH FUND
HOFFMAN BAR NONE
+*20307818 HA RITO LADY 3839

TEX SCOUT 9001
BRADSHAW ANNIE K 1007
20156061 MALSONS ANNIE K 22F

BASIN PAYWEIGHT 1682
DEER VALLEY RITA 36113
KG SOLUTION 0018
HA RITO LADY 0622

JVC CAVALRY V3326
TEX WENDY 6054
LD CAPITALIST 316
MALSONS ANNIE K 13D

\$M	81
\$W	84
\$F	117
\$G	53
\$B	171
\$C	303

CE	BW	WW	YW	SC	DOC	HP
I+8	I+1.5	I+84	I+140	I+73	I+21	I+11.9
MILK	\$E	RE	FAT	CLAW	ANGLE	
I+24	-13	I+.81	I+.045	I+.53	I+.52	

A stocky made, dense featured bull who has good muscle expression and sets down on a big foot. Top 5% CEM, \$W; Top 10% WW; Top 15% \$M, \$F; Top 20% YW, \$C.



LOT 43

43 | BRADSHAW PINNACLE 4077

21182364 | Calved: 3/15/24 | Tattoo: 4077

GAR ORACLE
HOFFMAN PINNACLE 296
+*19601126 PA RITA 0531-5392

TEX SCOUT 9001
BRADSHAW PAMELA 2001
20403853 HOFFMAN PAMELA 596

GAR PROPHET
GAR 28 AMBUSH N340
PA FORTITUDE 2500
GAR 5050 NEW DESIGN 0531

JVC CAVALRY V3326
TEX WENDY 6054
SAV RESOURCE 1441
3210 PAMELA 103

\$M	70
\$W	76
\$F	106
\$G	66
\$B	172
\$C	293

CE	BW	WW	YW	SC	DOC	HP
I+8	I+.8	I+72	I+126	I+.45	I+22	I+11.0
MILK	\$E	RE	FAT	CLAW	ANGLE	
I+31	-18	I+.79	I+.015	I+.52	I+.47	

A moderate framed, greener made bull. Extended up through his front one third, level designed and structure that reads with longevity. Raised by a first calf heifer, maturity will do him some good. Top 15% CEM, \$W; Top 20% MILK.



LOT 44

44 | BRADSHAW SOLUTION 4113

21151620 | Calved: 3/6/24 | Tattoo: 4113

SHAW SOLUTION 55073
RR 55073 SOLUTION 9187
19632778 ROLLIN ROCK BLACKBIRD 1078

ANGUS
Presented by Angus Genetics

CONNEALY FINAL PRODUCT
TL RITO BLACKCAP 708
18710391 TL RITO BLACKCAP 701

KG SOLUTION 0018
SHAW LADY BANDWAGON 9233W
GDAR GAME PLAN 893
ROLLIN ROCK BLACKBIRD 9427

CONNEALY PRODUCT 568
EBONISTA OF CONANGA 471
PAPA GEORGE 103
TL RITO LADY 0111

\$M	54
\$W	62
\$F	98
\$G	48
\$B	146
\$C	243

CE	BW	WW	YW	SC	DOC	HP
4	0.9	66	118	I+1.22	I+18	I+15.5
MILK	\$E	RE	FAT	CLAW	ANGLE	
31	-32	I+.47	I+.041	I+.56	I+.54	

This Solution son is really extended, good looking and is awesome structured. A big testicled bull with strong maternal predictions. We bought 708 as a bred cow from Terry Little and are very happy with how this bull has developed. Top 20% YH, HP, MILK, MH.

FALL ANGUS BULLS



LOT 45

45 | HAERR POWER CHIP 2309L

EXAR BLUE CHIP 1877B
5T POWER CHIP 4790
 *17956297 5T MISS WIX 8002
ANGUS
Presented by Angus Genetics
 GALAXY EXPEDITION 9046
HAERR EVERGREEN 2104J - 8003
 *20232764 WA FOCUS EVERGREEN 1102-8003

DAMERON FIRST CLASS
 GREENS PRINCESS 1012
 BC MATRIX 4132
 CIRCLE OAK MISS WIX 4014
 GALAXY EXPEDITION 6203
 GALAXY BLACKCAP 6058
 FHCC ABSOLUTE VALUE 3525
 WA FOCUS EVERGREEN 9010-1102

\$M	46
\$W	60
\$F	73
\$G	65
\$B	137
\$C	224

CE	BW	WW	YW	SC	DOC	HP
12	0.6	63	101	-0.31	17	13.4
MILK	\$E	RE	FAT	CLAW	ANGLE	
26	-33	0.86	0.048	0.53	0.52	

Heifer Bull. Good Marbling and Ribeye in a double-digit Calving Ease package. This Power Chip son ratios 132 for Marbling and is loaded with Galaxy and FHCC genetics. Show-Me-Select Qualified.



MARCH 21, 2025



BRADSHAW RANCH BULL SALE

FALL ANGUS BULLS



46 | HAERR KING PIN 2311L

PVF BLACKLIST 7077
PVF DLX KING PIN 0058
*19812047 PVF LUCY 4189



WB PENDLETON 708 PVF SWSN
HAERR MISSFOREVER 2208K-1404
*20313740 DHN MISS FOREVER 1404-204

PVF INSIGHT 0129
PVF BLACKBIRD 3070
C&C PRIORITY 14288 EXAR
THOMAS LUCY 7360

DAMERON BEST IN CLASS
WB PVF SF LUCY 4033
CONNELLY REFLECTION
DHN FOREVER FACTOR 204-872

\$M	75
\$W	56
\$F	85
\$G	59
\$B	144
\$C	262

CE	BW	WW	YW	SC	DOC	HP
11	0.6	51	85	0.33	20	10.2
MILK	\$E	RE	FAT	CLAW	ANGLE	
25	6	1.03	-0.009	0.32	0.50	

Heifer Bull. Loads of shape and dimension in this moderate framed King Pin son. His heifer dam is out of NWSS champion bull, Pendleton, and has settled AI every year! Double-digit Calving Ease with Marbling ratios of 120. Show-Me-Select Qualified.



47 | HAERR POWER CHIP 2315L

EXAR BLUE CHIP 1877B
ST POWER CHIP 4790
*17956297 ST MISS WIX 8002



GALAXY EXPEDITION 9046
HAERR MISSGEORGIA 2106J-8002
*20314414 WA MS FHCC GEORGIA 1003-8002

DAMERON FIRST CLASS
GREENS PRINCESS 1012
BC MATRIX 4132
CIRCLE OAK MISS WIX 4014

GALAXY EXPEDITION 6203
GALAXY BLACKCAP 6058
FHCC ABSOLUTE VALUE 3525
WA MS FHCC GEORGIA 716-1003

\$M	65
\$W	70
\$F	72
\$G	46
\$B	117
\$C	217

CE	BW	WW	YW	SC	DOC	HP
11	0.4	59	96	1.15	8	15.2
MILK	\$E	RE	FAT	CLAW	ANGLE	
35	-10	0.82	0.076	0.58	0.56	

Heifer Bull. Larger framed version of his 7/8 sib, 2309. Double-digit Calving Ease with PAP score in the Top 4% with strong Milk and Heifer Pregnancy EPDs in the Top 20% of the Angus breed. Show-Me-Select Qualified.



48 | HAERR ADVANTAGE 2355L

KCF BENNETT ABSOLUTE
RB ABSOLUTE ADVANTAGE
*18089331 RB LADY PARTY 167-305



EXAR UPSHOT 0562B
SHFI MISS UPSHOT 55C OF W889
*18497954 WILT EMY ENDURANCE 889

SAV FINAL ANSWER 0035
THOMAS MISS LUCY 5152
WERNER WAR PARTY 2417
BA LADY 6807 305

SITZ UPWARD 307R
EXAR BARBARA T020
CIRCLE A ENDURANCE 6679
WILT EMY FRONTIER 754

\$M	52
\$W	68
\$F	120
\$G	52
\$B	172
\$C	275

CE	BW	WW	YW	SC	DOC	HP
5	1.5	60	108	1.46	10	11.3
MILK	\$E	RE	FAT	CLAW	ANGLE	
39	-19	0.61	-0.025	0.54	0.60	

Cow or Heifer Bull. This Advantage son keeps getting better every day and his Upshot dam has been a cornerstone for our program for many years. Act. BW 68 lbs. Top 2% Milk with PAP and \$F in the top 15%.

FALL ANGUS BULLS

49 | HAERR REMINGTON 2359L

+*20902563 | Calved: 8/28/23 | Tattoo: 2359

CONNEALY CLARITY
POSS REMINGTON
+*20060430 POSS BLUEBLOOD 6502

ANGUS
Presented by Angus Genetics

SAV TEN SPEED 3022
DEPPE ROYAL LADY 615
*18623177 ONEILLS ROYAL LADY 42

CHERRY CREEK LAND GRANT
BRESHE OF CONANGA 6988
POSS EASY IMPACT 0119
POSS BLUEBLOOD 920

AAR TEN X 7008 SA
SAV MADAME PRIDE 1134
DHD TRAVELER 6807
ONEILLS ROYAL LADY 10

\$M	55
\$W	64
\$F	109
\$G	66
\$B	175
\$C	282

CE	BW	WW	YW	SC	DOC	HP
7	1.4	71	126	1.97	28	11.5
MILK	\$E	RE	FAT	CLAW	ANGLE	
25	-32	0.56	0.008	0.44	0.50	

Cow or Heifer Bull. These Remington sons are good on paper and even better on foot. His Ten Speed donor dam is a very prolific female that always transmits body and shape on great running gear. Balanced set of EPDs with Top 3% Scrotel, 15% Docility and Marbling ratio of 129!! Show-Me-Select Qualified.



LOT 49



DEPPE ROYAL LADY 615 — DAM OF LOT 49



DEPPE INSIGHT GEORGINA 536 — DAM OF LOT 50

50 | HAERR DEADWOOD 2320L

+*20795544 | Calved: 8/29/23 | Tattoo: 2320

POSS MAVERICK
POSS DEADWOOD
*19597261 POSS ELLUNAMERE 399

ANGUS
Presented by Angus Genetics

PVF INSIGHT 0129
DEPPE INSIGHT GEORGINA 536
+*18271775 CHAMPION HILL GEORGINA 107

BASIN PAYWEIGHT 1682
POSS PRIDE 5163
POSS EASY IMPACT 0119
POSS ELLUNMERE 0170

SAV BRILLIANCE 8077
PVF MISSIE 790
SAV BRAVE 8320
CHAMPION HILL GEORGINA 6208

\$M	33
\$W	60
\$F	122
\$G	70
\$B	192
\$C	282

CE	BW	WW	YW	SC	DOC	HP
7	0.9	76	129	1.05	8	6.6
MILK	\$E	RE	FAT	CLAW	ANGLE	
14	-22	0.94	0.000	0.51	0.53	

Cow or Heifer Bull. Deadwood transmits good growth and elite carcass numbers while his Insight dam is as good as you can make them. Long spined with loads of middle and an elite front 1/3. Balanced set of EPDs with good Marbling and Top 15% SF & SB. Show-Me-Select Qualified.



LOT 50

FALL ANGUS BULLS



51 | HAERR WEIGH UP 2362L

+*20905547 | Calved: 8/30/23 | Tattoo: 2362

SITZ UPWARD 307R
PLATTEMERE WEIGH UP K360
#*16692552 BARBARA OF PLATTEMERE 337



CONNEALY REFLECTION
DHN MISS FOREVER 1404-204
17879844 DHN FOREVER FACTOR 204-872

CONNEALY ONWARD
SITZ HENRIETTA PRIDE 81M
GAR RETAIL PRODUCT
BARBARA OF PLATTEMERE 311

BON VIEW NEW DESIGN 878
HAPPY GRILL OF CONANGA 6260
VIN-MAR O'REILLY FACTOR
MCATL MISS FOREVER 208-019

\$M	76
\$W	79
\$F	96
\$G	28
\$B	124
\$C	237

CE	BW	WW	YW	SC	DOC	HP
10	0.0	75	127	0.15	13	12.7
MILK	\$E	RE	FAT	CLAW	ANGLE	
27	-13	0.67	0.063	0.53	0.46	

Heifer Bull. Old school genetics here! Weigh Up back on a Connealy Reflection daughter that came from DeHaan Livestock! Double-digit Calving Ease with good growth and Top 20% \$M & \$W. Show-Me-Select Qualified.



FULL SIBLING TO LOT 51



FULL SIBLING TO LOT 52



52 | HAERR BLACKLIST 2364L

+*20903318 | Calved: 9/1/23 | Tattoo: 2364

PVF INSIGHT 0129
PVF BLACKLIST 7077
+*18944889 PVF BLACKBIRD 3070



VIN-MAR O'REILLY FACTOR
CB TILLIE 214
17347665 EXAR TILLIE 0338

SAV BRILLIANCE 8077
PVF MISSIE 790
DAMERON FIRST CLASS
ALL PVF BLACKBIRD 645

SAV FINAL ANSWER 0035
VIN-MAR EDELLA 2827
EXAR SPARTAN 6225
ABAR MS DAKOTA 5075

\$M	28
\$W	37
\$F	106
\$G	34
\$B	140
\$C	210

CE	BW	WW	YW	SC	DOC	HP
2	3.4	55	105	-0.17	13	8.6
MILK	\$E	RE	FAT	CLAW	ANGLE	
23	-26	1.16	-0.065	0.43	0.49	

Cow Bull. This is the Alpha male of the group. A Blacklist son out of an O'Reilly Factor dam that was big and broody and very fertile. Top 10% PAP and Ribeye EPDs! 68 to 836 pound, birthweight to weaning weight spread!

FALL ANGUS BULLS



LOT 53

53 | HAERR KING PIN 2324L

PVF BLACKLIST 7077

PVF DLX KING PIN 0058

*19812047 PVF LUCY 4189

ANGUS
Presented by Angus Genetics

44 POWER ALLEY 6571

COUNTRY ROAD EMPRESS 260

19950761 COUNTRY ROAD EMPRESS 166

PVF INSIGHT 0129

PVF BLACKBIRD 3070

C&C PRIORITY 14288 EXAR

THOMAS LUCY 7360

BASIN PAYWEIGHT 1682

QUAKER HILL BLACKCAP 0A32

PRAIRIE PRIDE NEXT STEP 2036

COUNTRY ROAD EMPRESS 732

\$M	68
\$W	62
\$F	84
\$G	54
\$B	138
\$C	247

CE	BW	WW	YW	SC	DOC	HP
11	-0.1	58	96	1.01	10	15.2
MILK	\$E	RE	FAT	CLAW	ANGLE	
25	-3	0.78	-0.002	0.53	0.50	

Heifer Bull. This King Pin son may be the best looking bull we've ever raised with a long spine and loads of red meat. His 260 donor dam transmits her elite balance and foot design to all of her progeny! Double-digit Calving Ease with balanced EPDs and Heifer Pregnancy in the Top 20%. Show-Me-Select Qualified.



COUNTRY ROAD EMPRESS 260 — DAM OF LOT 53

FALL ANGUS BULLS



LOT 54

54 | CRVA LIMELIGHT WEIGH UP L77

*20795021 | Calved: 10/4/23 | Tattoo: LG77

PLATTEMERE WEIGH UP K360

MAPLECREST CRVA WEIGH UP

*18881335 MAPLECREST VALLEE 3123

ANGUS
Presented by Angus Genetics

JINDRA ACCLAIM

CRVA LIMELIGHT'S ACCLAIM GE

19616040 CRVA LIMELIGHTS FUTURE DIREC

SITZ UPWARD 307R

BARBARA OF PLATTEMERE 337

CONNEALY CONFIDENCE 0100

CARTER'S VALLEE X126

JINDRA 3RD DIMENSION

JINDRA BLACKBIRD LASSY 1111

WHS LIMELIGHT 64V

DHT FUTURE SOLUTION 536

\$M	57
\$W	73
\$F	123
\$G	54
\$B	177
\$C	287

CE	BW	WW	YW	SC	DOC	HP
12	-0.4	82	145	0.52	8	9.4
MILK	\$E	RE	FAT	CLAW	ANGLE	
21	-32	0.88	-0.041	0.25	0.41	

Heifer Bull. This grandson of Weigh Up is built really well. Good fronted with good shape to his middle and back 1/3. Double-digit Calving Ease with negative birth. Real good growth and carcass with 18 EPDs in the Top 25% of the Angus breed!! Proven breeder that we've had cleaning up heifers all Winter. Show-Me-Select Qualified.



LOT 55

55 | HAERR 2333L

UNREGISTERED | Calved: 9/18/23 | Tattoo:

\$M	76
\$W	87
\$F	-
\$G	-
\$B	187
\$C	313

CE	BW	WW	YW	SC	DOC	HP
15	-0.4	80	143	-	-	-
MILK	\$E	RE	FAT	CLAW	ANGLE	
34	-	0.85	-	-	-	

Heifer Bull. What a stud!! The only reason this purebred Chesapeake son isn't a registered Angus is he has too much white in front of the naval. But man, he puts it all together! Great neck extension with a big middle and a nice hip! His parentel averages say he would be double-digit Calving Ease with negative Birth. Couple that with really good Milk and elite Marbling, this guy is the best of both worlds! His sire was the lead bull at Origin for Milk and \$W for multiple years.

2-YEAR-OLD ANGUS BULLS



LOT 56

56 | BRADSHAW THEDFORD 31021

BAR R JET BLACK 5063

HOFFMAN THEDFORD

19820180 HA RITO LADY 3839

ANGUS
Present by Niagara Genetics

VAR ROCKY 80029

H MATTI MAE 3336 ET

17590026 THOENE FRONTLINE 240

CONNEALY BLACK GRANITE

BAR R IRIS ANITA 0113

KG SOLUTION 0018

HA RITO LADY 0622

HARB ONWARD 786 J H

VERMILION LASS 0029

THOENE FRONTLINE 0166

THOENE BANDO 544

\$M	65
\$W	70
\$F	105
\$G	47
\$B	152
\$C	262

CE	BW	WW	YW	SC	DOC	HP
I+6	I+1.6	I+66	I+120	I+1.23	I+13	I+12.2
MILK	\$E	RE	FAT	CLAW	ANGLE	
I+34	-18	I+.74	I+.001	I+.49	I+.41	

31021 is a long bodied, long hipped bull that's thick made. Has the structure and cow family to put a tremendous set of daughters in the keeper pen while pushing the scales with his marketed offspring. A big testicled bull.

57 | BRADSHAW NIAGARA 31020

SS NIAGARA Z29

TCF NIAGARA 810

*19425134 MYERS VIOLA LASS M356

ANGUS
Present by Niagara Genetics

PVF INSIGHT 0129

HOFFMAN RACHEL 7655

18851513 3210 RACHEL 695

HOOVER DAM

JET SS X144

GAR SUNRISE

MYERS VIOLA LASS M112

SAV BRILLIANCE 8077

PVF MISSIE 790

3210 RIGHT TIME D919

3210 RACHEL 862

\$M	44
\$W	56
\$F	100
\$G	56
\$B	156
\$C	246

CE	BW	WW	YW	SC	DOC	HP
8	1.4	64	123	0.51	17	4.8
MILK	\$E	RE	FAT	CLAW	ANGLE	
23	-17	1.11	-0.006	0.43	0.50	

To talk about one that hits you with some pattern and presence. Extended up through his front one third, long bodied and level hipped. 31020 offers extra substance without sacrificing soundness of structure.



LOT 57

MARCH 21, 2025



BRADSHAW RANCH BULL SALE

2-YEAR-OLD ANGUS BULLS



LOT 58

58 | BRADSHAW PINNACLE 31026

G A R ORACLE
HOFFMAN PINNACLE 296
19601126 PA RITA 0531-5392

ANGUS
Present by Angus Genetics

TEX SCOUT 9001
BRADSHAW BLACKCAP 1008
20156092 HOFFMAN BLACKCAP 7161

G A R PROPHET
G A R 28 AMBUSH N340
PA FORTITUDE 2500
G A R 5050 NEW DESIGN 0531

JVC CAVALRY V3326
TEX WENDY 6054
YOUNG DALE BELIEVE 468
SITZ BLACKCAP 321U

\$M	-
\$W	55
\$F	-
\$G	-
\$B	-
\$C	-

CE	BW	WW	YW	SC	DOC	HP
I+6	I+1.3	I+66	I+117	-	-	-
MILK	\$E	RE	FAT	CLAW	ANGLE	
I+24	-	-	-	-	-	

A solid, complete bull right here. 31026 brings so many positives of width, muscle depth of rib and body giving him an attractive, practical look. A big testicled bull.

59 | BRADSHAW PINNACLE 31017

G A R ORACLE
HOFFMAN PINNACLE 296
19601126 PA RITA 0531-5392

ANGUS
Present by Angus Genetics

TEX SCOUT 9001
BRADSHAW ANNIE K 1007
20156061 MALSONS ANNIE K 22F

G A R PROPHET
G A R 28 AMBUSH N340
PA FORTITUDE 2500
G A R 5050 NEW DESIGN 0531

JVC CAVALRY V3326
TEX WENDY 6054
LD CAPITALIST 316
MALSONS ANNIE K 13D

\$M	67
\$W	70
\$F	108
\$G	70
\$B	178
\$C	298

CE	BW	WW	YW	SC	DOC	HP
I+8	I+9	I+69	I+120	I+62	I+19	I+9.5
MILK	\$E	RE	FAT	CLAW	ANGLE	
I+26	-10	I+.89	I+0.23	I+.49	I+.55	

Tremendous shape and muscle expression in 31017. He's bold in his upper rib giving him dimension and offers genuine skeletal width while remaining flexible and sound at the surface. Good footed.



LOT 59

2-YEAR-OLD ANGUS BULLS



LOT 60

60 | HAERR CAPITALIST 2376L

+*20703068 | Calved: 1/17/23 | Tattoo: 2376

CONNEALY CAPITALIST 028

LD CAPITALIST 316

#*17666102 LD DIXIE ERICA 2053

ANGUS
Presented by Angus Genetics

MOHNEN BINGO 149

JSS MISS ELBA 1154

17083602 JSS MISS ELBA 868

SAV FINAL ANSWER 0035

PRIDES PITA OF CONANGA 8821

CA FUTURE DIRECTION 5321

LD DIXIE ERICA OAR 0853

SAV BISMARCK 5682

MOHNEN JILT 1283

MJ RIGHT TIME 374

JSS MISS ELBA 2349

\$M	58
\$W	53
\$F	93
\$G	55
\$B	148
\$C	250

CE	BW	WW	YW	SC	DOC	HP
12	0.1	55	96	0.65	11	11.2
MILK	\$E	RE	FAT	CLAW	ANGLE	
22	-4	0.50	0.031	0.51	0.57	

Heifer Bull. Double-digit Calving Ease on this 2-year-old, high-quality Cap 316 son. Proven sire with a dam back to Mohnen Bingo that came from the Schlager Angus program. Show-Me-Select Qualified.



MARCH 21, 2025



BRADSHAW RANCH BULL SALE

YEARLING SIMMENTAL BULLS

SIRE OF LOTS 61 & 62



CLRS GUARDIAN 317G

CLRS GUARDIAN 317G

SIMMENTAL | 3563436 | Calved: 2/23/19 | Tattoo: BE CLRS 317G

HOOKS SHEAR FORCE 38K

HOOK'S BEACON 56B

2802160

HOOKS ZAFIRAH 41Z

MCM TOP GRADE 018X

CLRS ALWAYS XCELLENT

2735679

HOOK'S XCELLENCE 87X

NICHOLS LEGACY G151

C&D TRACY

GW PREDESTINED 701T

HOOK'S UNO 54U

MR NLC UPGRADE U8676

MCM 513R

TNT DUAL FOCUS T249

HOOKS PETUNIA 56P

CE	BW	WW	YW	ADG	MCE	MILK	MWW	STAY
15.3	-2.4	99.2	149.4	0.31	7.9	16.6	66.2	24.4
DOC	CW	YG	MARB	BF	REA	SF	API	TI
0.4	52	-0.2	0.73	-0.013	1.08	-0.38	200.6	110.3

Guardian is one impressive purebred bull. He is curve bending in his EPD profile. Reads as a Simmental should in his power, bone, mass and dense build. His progeny has been popular with bulls that demand premiums and his daughters should fill the replacement pen.



LOT 61

61 | BRAD GUARDIAN 4301M

4462296 | Calved: 1/16/24 | Tattoo: 4301M

HOOK'S BEACON 56B

CLRS GUARDIAN 317G

3563436

CLRS ALWAYS XCELLENT

HOOKS SHEAR FORCE 38K

HOOKS ZAFIRAH 41Z

MCM TOP GRADE 018X

HOOK'S XCELLENCE 87X

LLSF PAYS TO BELIEVE ZU194

BRAD LOOKING UP 8181F ET

3985600

PRTY-PCC LOOKING UP 609Y

CNS PAYS TO DREAM T759

LLSF URABABYDOLL U194

MR NLC UPGRADE U8676

PRC LOOKING GOOD T94

CE	BW	WW	YW	ADG	MCE	MILK	MWW	STAY
12.5	0.6	91.2	136.2	0.3	6.4	18.6	64.1	18.1
DOC	CW	YG	MARB	BF	REA	SF	API	TI
5.5	41.4	-0.28	0.48	-0.042	0.96	-0.36	150.1	91.3

4318M is a standout to those who have visited the ranch. Awesome presence and attractive yet unmatched performance and power. One of the heaviest 205 weights of the calf crop. A big testicled bull. Purebred Simmental, DNA Pending. Top 20% WW, YW, STAY, REA, TI.

YEARLING SIMMENTAL BULLS



LOT 62

62 | BRAD GUARDIAN 4300M

4462295 | Calved: 1/15/24 | Tattoo: 4300M

HOOK'S BEACON 56B
CLRS GUARDIAN 317G
3563436 CLRS ALWAYS XCELLENT

HOOKS SHEAR FORCE 38K
HOOKS ZAFIRAH 41Z
MCM TOP GRADE 018X
HOOK'S XCELLENCE 87X

HOC BRAZOS B117
HOF BLACKCAP 8579F
3437030 MALSONS BLACKCAP 27C

FBFS WHEEL MAN 649W
CCR MS MISTY MAY 8014U
WK ROCKY 2222
JAR BLACK POWER 67127

CE	BW	WW	YW	ADG	MCE	MILK	MWW	STAY
12.2	0.0	86.5	132.0	0.3	6.0	17.3	61.3	19.9
DOC	CW	YG	MARB	BF	REA	SF	API	TI
5.8	41.7	-0.13	0.51	-0.013	0.72	-0.27	154.3	89.3

The Simmental numbers are low, but the quality is high. This Guardian 3/4 blood is a rugged, stout rascal. Big square feet, smooth joints and big testicled. Out of a beautiful Blackcap dam the doesn't miss. Top 20% WW, STAY, API, TI.

63 | BRAD HIGHLIFE 4308M

4462299 | Calved: 2/17/24 | Tattoo: 4308M

KBHR HIGH ROAD E283
MR SR HIGHLIFE 61609
3568376 MISS SR D1609

HOOK'S BEACON 56B
WS MISS SUGAR C4
JBS BIG CASINO 336Y
MISS SR Y112

TJ HIGH CALIBRE 956B
HOF EBONYS JOY 8428F
3437008 JF EBONYS JOY 709T

MCM TOP GRADE 018K
PRS LADY DONE RIGHT W214
CNS DREAM ON L186
202F EBONYS JOY L-123

CE	BW	WW	YW	ADG	MCE	MILK	MWW	STAY
13.7	0.7	827.0	130.8	0.3	7.9	22.4	63.7	19.0
DOC	CW	YG	MARB	BF	REA	SF	API	TI
9.1	32.0	-0.42	0.09	-0.101	0.80	-0.37	143.0	82.5

Purebred baldy look in! Functional bull that is a double digit calving ease and low birth weight.



LOT 63

MARCH 21, 2025



BRADSHAW RANCH BULL SALE



LOT 64

64 | P 6MC 11E BENTLEY 2L ET {DLF, HYF, IEF, MSUDF, MDF, DBF}

SEMEN | P44496889 | Calved: 1/23/23 | Tattoo: LE 2L

JDH 11B STUD 3134 63E {CHB} {DLF, HYF, IEF, MSUDF, MDF, DBF}
 JDH AH BENTON 86 ET {CHB} {DLF, HYF, IEF, MSUDF, MDF, DBF}
 P44014184 JDH AH MS 34X VICTOR 33245C ET {DLF, HYF, IEF, MSUDF}



JDH VICTOR 719T 33Z ET {SOD} {CHB} {DLF, HYF, IEF, MSUDF, MDF, DBF}
 JDH AH MERCEDES 11E ET {DLF, HYF, IEF, MSUDF, MDF, DBF}
 P43835346 AH MS 25L RUMBLER 19Z {DOD} {DLF, HYF, IEF, MSUDF, MDF, DBF}

CHURCHILL STUD 3134A {SOD} {CHB} {DLF, HYF, IEF, MSUDF, MDF, DBF}
 JDH MS 21Z VICTOR 3Y 11B {DOD} {DLF, HYF, IEF}
 JDH VICTOR 719T 33Z ET {SOD} {CHB} {DLF, HYF, IEF, MSUDF, MDF, DBF}
 AH JDH MS 25L WRANGLER 34X ET {DOD} {DLF, HYF, IEF}

BMI\$

481

BI\$

577

CHB\$

201

TH 122 71I VICTOR 719T {SOD} {DLF, HYF, IEF, MSUDF, MDF, DBF}
 JDH MS YANKEE 11U ET {DLF, HYF, IEF, DBP}
 BAR JZ RUMBLE 525X {DLF, HYF, IEF, DBP}
 AH JDH MS 25L WRANGLER 34X ET {DOD} {DLF, HYF, IEF}

CE	BW	WW	YW	DMI	SC	SCF	MM	M&G
2.8	3.8	77	127	0.1	1.2	19.4	33	72
MCE	MCW	UDDR	TEAT	CW	FAT	REA	MARB	
5.2	145	1.30	1.30	110	-0.048	0.99	0.19	

Selling five (5) packages of ten (10) units. Bentley was the high-selling bull at the 2024 National Hereford Sale at the Cattlemen's Congress. He is an impressive individual with an elite design up through his front 1/3, flawless in his build and strides with comfort and flexibility. Bentley is unique in his extra mass up high and shape from behind. We find a lot of value in this herd bull with his diverse ability to improve multiple aspects of a cow herd. He is an absolute standout in his EPD profile which makes him a must use sire in 2025. We have several calves on the ground now that confirm our hype. They come easy with lots of vigor, attractive in their design with the added features of stoutness and pigment. Owned with G&R Herefords, Pratz Cattle Company and 6 Mile Creek LLC.

64A | SEMEN

10 UNITS

64B | SEMEN

10 UNITS

64C | SEMEN

10 UNITS

64D | SEMEN

10 UNITS

64E | SEMEN

10 UNITS

Take advantage of hybrid vigor by capitalizing on Hereford genetics.



The Maternal Advantage program generates females with added longevity, more docility, increased fertility and more profit per year.

Can be utilized by producers using Hereford bulls on British-based cows or Brahman-based cows in their breeding program.

Producers utilizing the program will have access to a sire EPD summary, added market exposure, replacement selection tools, genetic improvement tools and access to AHA resources, marketing and staff.

Qualifications

- Producers must verify that eligible females are sired by registered Hereford bulls with transferred ownership.
- Participating bull batteries must rank in the top 50% of the breed for Baldy Maternal Index (BMI\$) if used on British-based cows or the top 50% of the breed for Brahman Influence Index (BII\$) if used on Brahman-based cows.



Understanding Hereford EPDs

The American Hereford Association (AHA) currently produces expected progeny differences (EPDs) for 17 traits and calculates three profit (\$) indexes. AHA's genetic evaluation makes use of a Marker Effects Model that allows the calculation of EPDs by incorporating the pedigree, phenotypic and genomic profile of an animal. Animals that have a genomic profile will be denoted with a GE-EPD logo.

The current suite of Hereford EPDs and \$ indexes includes:

Calving Ease — Direct (CE)

CE EPD is based on calving ease scores and birth weights and is measured on a percentage. CE EPD indicates the influence of the sire on calving ease in females calving at 2 years of age. For example, if sire A has a CE EPD of 6 and sire B has a CE EPD of -2, then you would expect on average if comparably mated, sire A's calves would be born with an 8% more likely chance of being unassisted when compared to sire B's calves.

Birth Weight (BW)

BW EPD is an indicator trait for calving ease and is measured in pounds. For example, if sire A has a BW EPD of 3.6 and sire B has a BW EPD of 0.6, then you would expect on average if comparably mated, sire A's calves would come 3 lb. heavier at birth when compared to sire B's calves. Larger BW EPDs usually, but not always, indicate more calving difficulty. The figure in parentheses found after each EPD is an accuracy value or reliability of the EPD.

Weaning Weight (WW)

WW EPD is an estimate of pre-weaning growth that is measured in pounds. For example, if sire A has a WW EPD of 60 and sire B has a WW EPD of 40, then you would expect on average if comparably mated, sire A's calves would weigh 20 lb. heavier at weaning when compared to sire B's calves.

Yearling Weight (YW)

YW EPD is an estimate of post-weaning growth that is measured in pounds. For example, if sire A has a YW EPD of 100 and sire B has a YW EPD of 70, then you would expect on average if comparably mated, sire A's calves would weigh 30 lb. heavier at a year of age when compared to sire B's calves.

Dry Matter Intake (DMI)

The Dry Matter Intake EPD predicts the daily consumption of pounds of feed. For example, if sire A has a DMI EPD of 1.1 and sire B has a DMI EPD of 0.1, you would expect sire B's progeny, if comparably mated, to consume on average 1 pound of feed less per day.

Scrotal Circumference (SC)

Measured in centimeters and adjusted to 365 days of age, SC EPD is the best estimate of fertility. It is related to the bull's own semen quantity and quality, and is also associated with age at puberty of sons and daughters. Larger SC EPDs suggest younger age at puberty. Yearling sons of a sire with a .7 SC EPD should have yearling scrotal circumference measurements that average 0.7 centimeters (cm) larger than progeny by a bull with an EPD of 0.0 cm.

Sustained Cow Fertility (SCF)

The AHA's new Sustained Cow Fertility EPD (SCF) is a prediction of a cow's ability to continue to calve from three years of age through twelve years of age, given she calved as a two-year-old. The EPD is expressed as a deviation in the proportion of the ten-possible calving's to twelve years old expressed as a probability. For example, the daughters of a bull with a 30 EPD would have the genetic potential to have one more calf by age twelve than the daughters from a bull with a 20 EPD. In other words, the daughters from the 30 EPD bull would have a 10% greater probability of having one more calf than the bull with a 20 EPD. This is equivalent to saying that the daughters are 10% more likely to remain in the herd to age 12.

Maternal Milk (MM)

The milking ability of a sire's daughters is expressed in pounds of calf weaned. It predicts the difference in average weaning weights of sires' daughters' progeny due to milking ability. Daughters of the sire with a +14 MM EPD should produce progeny with 205-day weights averaging 24 lb. more (as a result of greater milk production) than daughters of a bull with a MM EPD of -10 lb. (14 minus -10.0 = 24 lb.). This difference in weaning weight is due to total milk production during the entire lactation.

Maternal Milk & Growth (M&G)

Maternal Milk & Growth reflects what the sire is expected to transmit to his daughters for a combination of growth genetics through weaning and genetics for milking ability. It is an estimate of daughters' progeny weaning weight. A bull with a 29 lb. M&G EPD should sire daughters with progeny weaning weights averaging 19 lb. heavier than progeny of a bull's daughters with a M&G EPD of 10 lb. (29 minus 10 = 19 lb.). It is equal to one-half the sire's weaning weight EPD, plus all of his MM EPD. No accuracy is associated with this since it is simply a mathematical combination of two other EPDs. It is sometimes referred to as "total maternal" or "combined maternal."

Maternal Calving Ease (MCE)

MCE EPD predicts how easily a sire's daughters will calve at 2 years of age and is measured on a percentage. For example, if sire A has a MCE EPD of 7 and sire B has a CE EPD of -3, then you would expect on average if comparably mated, sire A's daughters would calve with a 10% more likely chance of being unassisted when compared to sire B's daughters.

Mature Cow Weight (MCW)

The MCW EPD was designed to help breeders select sires that will either increase or decrease mature size of cows in the herd. The trait was developed after years of cow weight data collection and the EPD relates directly to the maintenance requirements of a cow herd. For example, if sire A has a MCW EPD of 100 and sire B has an EPD of 85, then you would expect the females of sire A, if mated to similar cows, to be 15 lb. heavier at mature size.

Udder Suspension (UDDR)

UDDR EPDs are reported on a 9 (very tight) to 1 (very pendulous) scoring scale. Differences in sire EPDs predict the

difference expected in the sires' daughters' udder characteristics when managed in the same environment. For example, if sire A has a UDDR EPD of 0.4, and sire B has a UDDR EPD of -0.1, the difference in the values is 0.5, or one-half of a score. If daughters of sires A and B are raised and managed in the same environment, you would expect half a score better udder suspension in daughters of sire A, compared to sire B.

Teat Size (TEAT)

TEAT EPDs are reported on a 9 (very small) to 1 (very large, balloon shaped) scoring scale. Differences in sire EPDs predict the difference expected in the sires' daughters' udder characteristics when managed in the same environment. For example, if sire A has a teat size EPD of 0.4, and sire B has a teat size EPD of -0.1, the difference in the values is 0.5, or one-half of a score. If daughters of sires A and B are raised and managed in the same environment, you would expect half a score smaller teat size in daughters of sire A, compared to sire B.

Carcass Weight (CW)

Carcass weight is a beneficial trait when considering the impact that pounds have relative to end product value. At the same age constant endpoint, sires with higher values for carcass weight will add more pounds of hot carcass weight compared to sires with lower values for carcass weight. For example, if sire A has a CW EPD of 84 and sire B has a CW EPD 64, then you would expect the progeny of sire A, if harvested at the same age constant endpoint, to have a 20-lb. advantage in terms of hot carcass weight.

Rib Fat (FAT)

The FAT EPD reflects differences in adjusted 365-day, 12th-rib fat thickness based on carcass measurements of harvested cattle. Sires with low, or negative FAT EPDs are expected to produce leaner progeny than sires with higher EPDs. Ultrasound measures are also incorporated into this trait and have been shown to be highly correlated with the performance of slaughter progeny. All data is expressed on a carcass scale.

Ribeye Area (REA)

REA EPDs reflect differences in an adjusted 365-day ribeye area measurement based on carcass measurements of harvested cattle. Sires with relatively higher REA EPDs are expected to produce better-muscled and higher percentage yielding slaughter progeny than will sires with lower REA EPDs. Ultrasound measurements are also incorporated into this trait and have been shown to be highly correlated with the performance of slaughter progeny. All data is expressed on a carcass scale.

Marbling (MARB)

MARB EPDs reflect differences in an adjusted 365-day marbling score (intramuscular fat, [IMF]) based on carcass measurements of harvested cattle. Breeding cattle with higher MARB EPDs should produce slaughter progeny with a higher degree of IMF and therefore higher quality grades. Ultrasound measurements are also incorporated into this trait and have been shown to be highly correlated with the

performance of slaughter progeny. All data is expressed on a carcass scale.

Baldie Maternal Index (BMI\$)

The Baldie Maternal Index is a maternally focused index that is based on a production system that uses Hereford x Angus cross cows. Progeny of these cows are directed towards Certified Hereford Beef. This index has significant weight on Sustained Cow Fertility, which predicts fertility and longevity of females. There is a slightly positive weight on Weaning Weight, Mature Cow Weight and Milk which accounts for enough growth but ensures females do not increase inputs. There is some negative emphasis on Dry Matter Intake, but a positive weighting on Carcass Weight which is anticipated to provide profitability from finishing of non-replacement females and castrated males. Marbling and Rib-eye Area are also positively weighted to keep the harvested progeny successful for CHB. This index is geared to identify Hereford bulls that will be profitable when used in a rotational cross with mature commercial Angus cows.

Brahman Influence Index (BI\$)

The Brahman Influence Index is a maternally focused index that is based on a production system that uses Brahman x Hereford cross cows. Progeny of these cows are directed towards a commodity beef market since Certified Hereford Beef does not accept Brahman influenced cattle. This index has significant weight on Sustained Cow Fertility, which predicts fertility and longevity of females. There is a slightly positive weight on Weaning Weight, Mature Cow Weight and Milk which accounts for enough growth but ensures females do not increase inputs. There is some negative emphasis on Dry Matter Intake, but a positive weighting on Carcass Weight which is anticipated to provide profitability in finishing non-replacement females and castrated males. Marbling and Rib-eye Area are also positively weighted to keep harvested progeny successful for a variety of commodity based programs. This index targets producers that use Hereford bulls on Brahman influenced cows.

Certified Hereford Beef Index (CHBS)

The Certified Hereford Beef Index is a terminal sire index that is built on a production system where Hereford bulls are mated to mature commercial Angus cows and all progeny will be targeted for Certified Hereford Beef after the finishing phase. This index has significant weight on Carcass Weight to ensure profit on the rail. As well there is a positive weighting for Average Daily Gain along with a negative weighting on Dry Matter Intake to ensure efficient pounds of growth in the finishing phase. Keep in mind, this production system takes advantage of complimentary breeding with the commercial Angus cow. Although Marbling is weighted positively in this index, a positive weighting for Rib-eye Area and a negative weighting for Back Fat are a greater priority in this index to allow for optimum end-product merit. This is the only index that has no emphasis on fertility. Remember that no replacement heifers are being retained.



BRADSHAW RANCH

THANK YOU FOR YOUR INTEREST!



MARCH 21, 2025



BRADSHAW RANCH BULL SALE

BRADSHAW RANCH

12180 272nd Street
LaBelle, MO 63447



BULL SALE

MARCH 21, 2025 | 5:00 P.M. CST | F/T LIVESTOCK MARKET | PALMYRA, MO

LiveAg

ONLINE BIDDING AVAILABLE!