

WALKER HEREFORDS

Foundations for the Future

BULL SALE



SATURDAY, FEB. 1, 2025 | 12 NOON (CST)

Walker Herefords Sale Facility • Morrison, Tennessee

POWERFUL • PRODUCTIVE • PROMISING

Foundations for the Future

BULL SALE

SATURDAY, FEB. 1, 2025 • 12 NOON (CST)

Lunch served at 11 a.m. and sale begins at 12 (Noon)

SALE DAY PHONES

Eric Walker	931-607-6356
Cody Walker	931-607-0337
Mike Jernigan	615-418-2218
Connor Jagers	270-218-1820
Locke St. John	615-427-8979

SALE STAFF

Josh Jasper, Auctioneer	859-285-8702
Tommy Coley	815-988-7051
Bobby Singleton	615-708-1034
Carter St. John	205-705-4041
Tim Dietrich	859-619-0342

SALE CATTLE PREPARATION

Jake Mayes	931-304-0722
Will Mayes	931-254-3696

ACKNOWLEDGEMENTS

Creative Services	Catalog
Debbie Hicks	Sale Clerk
Mandy Willis, DVM	Herd Veterinarian
Jessica Cripps, DVM	Veterinarian
Todd Bickett, DVM	Embryologist
Jack Ward, Executive Vice President	AHA
Shane Bedwell, Breed Improvement	AHA
Jim Coley, Director	AHA

TRANSPORTATION

Trucks will be available

SALE MANAGEMENT



Locke St. John
615-427-8979
lockestjohn93@gmail.com

HEREFORDS ON DEMAND

View Foundations for the Future Bull Sale catalog for the most current EPDs:
hereford.org/marketing/hereford-sales/production-catalogs/



GPS SALE ADDRESS

439 Beacon Light Road
Morrison, Tennessee 37357



DIRECTIONS

From I-24
Take Exit 111. Go east on Hwy. 55 for 12 miles, turn right on Hwy. 287.
Go 1 mile, turn right on Beacon Light Road.



From McMinnville

Take Hwy. 55 West to Morrison. Turn left on Hwy. 287, go 1 mile,
turn right on Beacon Light Road.

ACCOMMODATIONS

All hotels are approximately 20 minutes from the sale location.

Holiday Inn Express	Hampton Inn
931-728-9383	931-728-9528
Manchester	Manchester
Exit #114 I-24	Exit #110 I-24
Comfort Suites	Hampton Inn
931-728-1301	931-473-0009
Manchester	McMinnville
Exit #114 I-24	1560 Sparta St



AIRPORT

Nashville International
Sale is located approximately 1.5 hours from the airport.



LIVE AUCTIONS.TV

Online Bidding Platform
Live audio and live video will allow buyers to bid on animals as if they
were present at the sale. Buyers must create an account prior to the sale.
Please visit LiveAuctions.tv to create an account. Contact Erick Schmidt
at 830-263-0166



Videos available on LiveAuctions.tv after Jan. 20th!

INSURANCE

Insurance is available through Jensen Livestock Agency
Sheila Jensen 785-262-1116



TENNESSEE AGRICULTURE ENHANCEMENT PROGRAM

All bulls that qualify for the TAEF maximum cost share reimbursement will be marked on the sale day supplement.

Walker Herefords



WALKERHEREFORDFARM.COM



WLKR JH MERIT 9244 3110L ET

1

BULL

WLKR JH MERIT 9244 3110L ET (DLF,HYF,IEF,MSUDF)

/W P44534952 | Calved: 9/19/23 | Tattoo: LE 3110 | Polled
 JW X651 TESTED 1857 ET (CHB)(DLF,HYF,IEF,MSUDF,MDF)
 JW 1857 MERIT 21134 (DLF,HYF,IEF,MSUDF,MDF,DBF)
 P44212986 JW 33Z VICTORIA 19027 (DLF,HYF,IEF,MSUDF)



F FINAL TEST 722 (CHB)(DLF,HYF,IEF,MSUDF,MDF,DBF)

WLKR JH ROSE 722 172C 9244 (DLF,HYF,IEF,MSUDF)
 P44122247 CMF 64Z ROSE 172C (DLF,HYF,IEF,MSUDF)

ACT. BW
71
ADJ. WW

ADJ. YW
1037
ADJ. REA
13.79
ADJ. MARB
2.93

CEU	BW	WW	YW	DMI	SC	SCF	MILK	M&G	CEM	MCW											
3.7	46%	2.5	44%	83	1%	137	1%	0.8	98%	1.6	6%	21.1	16%	36	7%	78	1%	-0.2	71%	134	99%
UDDR	TEAT	CW	MARB	REA	FAT	BMI	BII	CHB													
1.30	25%	1.30	29%	107	1%	0.47	3%	0.83	4%	0.013	32%	490	4%	614	2%	200	1%				

- **Homozygous Polled**
- **Recommended for use on heifers**
- What an impressive individual to start this offering of bulls off with. We all search the U.S. for bulls like 3110, that put it all together from a phenotype, genotype and EPD standpoint. 3110 is a high growth bull that comes along with a moderate BW, along with added maternal traits and elite added carcass being a 200 on CHB\$. When you study this standout from a phenotype aspect, he is big boned, wide based with worlds of middle and spring of rib. This stout featured son of Merit is out of the popular AI sire and CHB\$ sire for Tennessee River Music and Waggoner Cattle Co. 9244 the dam of 3110 is the most recent lot 1 in the /W FFTF Sale commanding \$13,500 to Morris Cattle Co. in Texas. 9244 is one of the most famed donors raised here in the last several years. Many maternal sibs are currently working in herds across the nation.
- Ranks in the top 10% for 11 traits.
- Selling 2/3 interest and full possession
- /W is retaining a 1/3 in-herd use and revenue sharing interest.



WLKR JH ROSE 722 172C 9244 – Dam of Lot 1



JW 1857 MERIT 21134 – Sire of Lot 1

Scrotal Circumference Measurements will be included on the Sale Supplement sheet.



WALKER FULL CIRCLE 3511ET

2

WALKER FULL CIRCLE 3511ET {DLF,HYF,IEF,MSUDF}

BULL

/W P44454927 | Calved: 2/8/23 | Tattoo: LE 3511 | Polled

CL 1 DOMINO 942G {CHB}{DLF,HYF,IEF,MSUDF,MDF}

CHURCHILL BR 5JNATIONWIDE 179J {CHB}{DLF,HYF,IEF,MSUDF,MDF}

P44268920 BR VALIDATED B413 6035 7098 {DLF,HYF,IEF,MDF,DBF}



F FINAL TEST 722 {CHB}{DLF,HYF,IEF,MSUDF,MDF,DBF}

WALKER TORI 722 B101 950G {DLF,HYF,IEF,MSUDF}

P44012828 WALKER TORI X51 911 B101 ET {DLF,HYF,IEF,MSUDF}

ACT. BW
75
ADJ. WW

ADJ. YW
1072
ADJ. REA
11.76

ADJ. MARB
2.81

- **Homozygous Polled**
- **Recommended for use on heifers**
- Superior elite genetics. We strive to produce cattle with elite phenotype, genotype and EPD profiles like we have here. We were mindful of making this mating to raise bulls like Full Circle to be able to offer outcross genetics to the purebred breeder. Heavily used in the /W program as he gives such a diverse pedigree to us in a unique phenotypic aspect. We believe there is an opportunity to sell semen in this young herd sire.
- Full Circle 3511 is enrolled in the NRSP program at Olsen Ranches in Nebraska.
- 3511 froze high quality semen this past summer.
- Selling 1/2 Interest and 1/2 Possession. Breeding season is Negotiable.
- Buyer will receive 50 units of semen with purchase for in-herd use.

CE	BW	WW	YW	DMI	SC	SCF	MILK	M&G	CEM	MCW											
10.3	7%	1.8	29%	72	4%	113	5%	0.8	98%	0.9	59%	23.0	8%	22	78%	59	35%	5.5	10%	127	98%
UDDR	TEAT	CW	MARB	REA	FAT	BMI	BII	CHB													
1.50	2%	1.50	4%	101	1%	0.52	2%	1.04	1%	0.083	98%	507	3%	625	2%	187	1%				



CHURCHILL BR 5JNATIONWIDE 179J – Sire of Lots 2, 3 and 4



WLKR NATIONWIDE 950G 3508 ET

3

WLKR NATIONWIDE 950G 3508 ET (DLF,HYF,IEF,MSUDF)

BULL

/W P44454926 | Calved: 2/2/23 | Tattoo: LE 3508 | Polled
 CL 1 DOMINO 942G (CHB)(DLF,HYF,IEF,MSUDF,MDF)
 CHURCHILL BR 5NATIONWIDE 179J (CHB)(DLF,HYF,IEF,MSUDF,MDF)
 P44268920 BR VALIDATED B413 6035 7098 (DLF,HYF,IEF,MDF,DBF)



F FINAL TEST 722 (CHB)(DLF,HYF,IEF,MSUDF,MDF,DBF)
 WALKER TORI 722 B101 950G (DLF,HYF,IEF,MSUDF)
 P44012828 WALKER TORI X51 911 B101 ET (DLF,HYF,IEF,MSUDF)

ACT. BW
75
ADJ. WW

ADJ. YW
988
ADJ. REA
12.54
ADJ. MARB
2.70

CEU	BW	WW	YW	DMI	SC	SCF	MILK	M&G	CEM	MCW											
10.2	7%	1.3	20%	64	19%	99	27%	0.8	98%	1.0	48%	27.6	1%	26	56%	58	38%	5.6	10%	103	79%
UDDR	TEAT	CW	MARB	REA	FAT	BMI	CHB														
1.50	2%	1.60	1%	85	10%	0.47	3%	0.73	9%	0.093	99%	542	1%	654	1%	155	7%				

- **Homozygous Polled**
- **Recommended for use on heifers**
- Sleep all night calving ease bull that is a full brother to Full Circle. This conservative marked long bodied herd bull will add a unique look and quality to his next calf crop.
- 3508 offers an elite EPD profile as it is hard to rank in the top 10% of the breed for 11 traits.

4

WLKR NATIONWIDE 950G 3512 ET (DLF,HYF,IEF,MSUDF)

BULL

/W P44467092 | Calved: 2/7/23 | Tattoo: LE 3512 | Polled
 CL 1 DOMINO 942G (CHB)(DLF,HYF,IEF,MSUDF,MDF)
 CHURCHILL BR 5NATIONWIDE 179J (CHB)(DLF,HYF,IEF,MSUDF,MDF)
 P44268920 BR VALIDATED B413 6035 7098 (DLF,HYF,IEF,MDF,DBF)



F FINAL TEST 722 (CHB)(DLF,HYF,IEF,MSUDF,MDF,DBF)
 WALKER TORI 722 B101 950G (DLF,HYF,IEF,MSUDF)
 P44012828 WALKER TORI X51 911 B101 ET (DLF,HYF,IEF,MSUDF)

ACT. BW
75
ADJ. WW

ADJ. YW
991
ADJ. REA
11.52
ADJ. MARB
4.20

CEU	BW	WW	YW	DMI	SC	SCF	MILK	M&G	CEM	MCW											
9.3	9%	1.4	22%	62	25%	92	44%	0.8	98%	1.2	27%	25.9	2%	27	49%	58	37%	2.3	40%	91	54%
UDDR	TEAT	CW	MARB	REA	FAT	BMI	CHB														
1.50	2%	1.60	1%	81	17%	0.44	4%	0.84	4%	0.063	92%	513	2%	618	2%	147	11%				

- **Recommended for use on heifers**
- Stout made herd bull that is the cowboy kind here. Love the overall shape and body mass 3512 exhibits. This big boned, smooth jointed full brother to Full Circle is a bull that is easy fleshing and will sire a group of calves that will add elite value. When you study the EPD profile you find that 3512 is loaded with calving ease, maternal and elite carcass. This is a big-time herd bull opportunity.
- Ranks in the top 10% for 8 traits.



WLKR NATIONWIDE 950G 3512 ET



WLKR JH KEY WEST 7233 3255 ET

5

WLKR JH KEY WEST 7233 3255 ET (DLF,HYF,IEF,MSUDF,MDF,DBF)

BULL

/W P44549259 | Calved: 8/28/23 | Tattoo: LE 3255 | Polled
 C (C) BELLE HEIR ET (CHB) (DLF,HYF,IEF)
C KEY WEST 0065 (DLF,HYF,IEF,MSUDF,MDF)
 P44122894 C BLACK HAWK LASS 8019 (DLF,HYF,IEF,MSUDF,MDF)



INNISFAIL WHR X651/723 4013 ET (CHB) (DLF,HYF,IEF,MSUDF,MDF)

EXR GEMINI 7233 ET (DLF,HYF,IEF)

P43850435 TH 89T 755T GEMINI 471Z (DLF,HYF,IEF)

ACT. BW
79

ADJ. WW

ADJ. YW
1148

ADJ. REA
15.29

ADJ. MARB
2.00

CEU	BW	WW	YW	DMI	SC	SCF	MILK	M&G	CEM	MCW											
4.2	41%	4.5	85%	70	5%	111	8%	0.6	89%	1.3	19%	23.5	6%	22	78%	57	40%	-2.0	87%	111	89%
UDDR	TEAT	CW	MARB	REA	FAT	BMI	BII	CHB													
1.30	25%	1.40	12%	88	7%	0.19	29%	0.72	9%	0.013	32%	483	5%	578	5%	147	11%				

• Homozygous Polled

- Big, stout, and powerful beef bull. 3255 is a well-balanced bull that will add value to any herd. This direct son of C Key West is a high quality individual that brings many valuable traits to the table. When you study the EPD profile of 3255 you will find high growth for WW and YW along with added carcass weight and ribeye as he scanned an Adj. REA of 15.29. The dam of 3255 is a direct daughter of 4013 the famed bull for added carcass and maternal. 7233 originated in the Express Ranches program in Oklahoma and now is donor for 7 Oaks Plantation & Cattle Co. in Georgia. 3255 will be easy to find sale day.
- Ranks in the top 10% for 7 traits.

6

WLKR JH HOUSTON 7233 3269

BULL

/W P44549000 | Calved: 11/10/23 | Tattoo: LE 3269 | Polled
 SHF DAYBREAK Y02 D287 ET (CHB) (DLF,HYF,IEF,MSUDF)
SHF HOUSTON D287 H086 (CHB) (DLF,HYF,IEF,MSUDF,MDF,DBF)
 P44123641 SHF MISS 14 20Z D223 (DLF,HYF,IEF,DBF)

INNISFAIL WHR X651/723 4013 ET (CHB) (DLF,HYF,IEF,MSUDF,MDF)

EXR GEMINI 7233 ET (DLF,HYF,IEF)

P43850435 TH 89T 755T GEMINI 471Z (DLF,HYF,IEF)

ACT. BW
73

ADJ. WW

ADJ. YW
1067

ADJ. REA
15.21

ADJ. MARB
1.93

CEU	BW	WW	YW	DMI	SC	SCF	MILK	M&G	CEM	MCW											
0.7	73%	3.6	70%	76	2%	123	2%	0.5	86%	1.6	6%	17.0	49%	22	78%	60	27%	-1.6	84%	126	98%
UDDR	TEAT	CW	MARB	REA	FAT	BMI	BII	CHB													
1.40	8%	1.30	29%	91	5%	0.28	14%	0.70	11%	0.053	86%	399	29%	502	20%	159	6%				

• Homozygous Polled

- This big footed, long bodied son of the heavily used AI sire SHF Houston, is a stylish made sound bull that will leave a set of daughters to die for. 3269 is the natural calf of the 7233 donor. Study the exceptional growth and carcass figures as progeny of 3269 are going to flat grow. Maternal sibs are working herds across the southeast.
- Ranks in the top 10% for 6 traits.
- GE-EPDs available sale day.



WLKR JH HOUSTON 7233 3269



EXR GEMINI 7233 ET — Dam of Lots 5 and 6



WLKR DRF HOUSTON 9149 3115L

7

WLKR DRF HOUSTON 9149 3115L {DLF,HVF,IEF,MSUDF}

BULL

/W P44552557 | Calved: 9/26/23 | Tattoo: LE 3115 | Polled
 SHF DAYBREAK Y02 D287 ET {CHB}{DLF,HVF,IEF,MSUDF}
 SHF HOUSTON D287 H086 {CHB}{DLF,HVF,IEF,MSUDF,MDF,DBF}
 P44123641 SHF MISS 14 20Z D223 {DLF,HVF,IEF,DBP}



F FINAL TEST 722 {CHB}{DLF,HVF,IEF,MSUDF,MDF,DBF}

WLKR DRF MARTHA 722 095W 9149G {DLF,HVF,IEF,MSUDF}
 P44122124 JWR 120T MIS TARGET 095W {DLF,HVF,IEF}

ACT. BW
71
ADJ. WW

ADJ. YW
1101
ADJ. REA
13.21
ADJ. MARB
3.00

CEU	BW	WW	YW	DMI	SC	SCF	MILK	M&G	CEM	MCW									
5.9	27%	2.3	39%	70	6%	0.3	68%	0.9	59%	22.5	9%	32	19%	67	8%	6.1	7%	115	93%
UDDR	TEAT	CW	MARB	REA	FAT	BMI	BII	CHB											
1.20	54%	1.20	56%	83	12%	0.46	3%	0.63	18%	0.043	77%	486	5%	599	3%	170	3%		

- **Homozygous Polled**
- **Recommended for use on heifers**
- What a well-balanced bull from end to end. 3115 does so many things right! Dark red colored. Homo Polled, with incredible structure and build from the ground up. When you study this Houston son not only from a phenotype standpoint but genotype as well, there isn't much we would change. Loads of added growth and backed by a cow family with added maternal and carcass value.
- Ranks in the top 10% for 9 traits.

8

DCF 642Z DALLAS 144L ET {DLF,HVF,IEF,MSUDF}

BULL

DRY CREEK P44564391 | Calved: 10/10/23 | Tattoo: BE 144L | Scurred
 SHF DAYBREAK Y02 D287 ET {CHB}{DLF,HVF,IEF,MSUDF}
 SHF HOUSTON D287 H086 {CHB}{DLF,HVF,IEF,MSUDF,MDF,DBF}
 P44123641 SHF MISS 14 20Z D223 {DLF,HVF,IEF,DBP}



CRR 719 CATAPULT 109 {SOD}{DLF,HVF,IEF,MDF}

WHR RMB109 BEEFMAID 642Z {DLF,HVF,IEF,MSUDF}
 P43490976 GV CMR X221 MISS 9064 Z365 {DLF,HVF,IEF,MSUDF}

ACT. BW
73
ADJ. WW

ADJ. YW
1160
ADJ. REA
11.93
ADJ. MARB
2.10

CEU	BW	WW	YW	DMI	SC	SCF	MILK	M&G	CEM	MCW											
1.2	69%	1.8	29%	67	11%	109	9%	0.5	81%	1.4	13%	23.6	6%	31	25%	64	14%	1.8	46%	113	92%
UDDR	TEAT	CW	MARB	REA	FAT	BMI	BII	CHB													
1.30	25%	1.20	56%	83	13%	-0.02	90%	0.76	7%	0.013	32%	473	6%	551	8%	123	38%				

- What a whale of a beef bull Dallas is. When you study the overall build and quality of structure from the ground up there isn't much you would change. Wide based bull stacked with loads of red meat 114L is a high-quality beef bull. Moderate birth with high growth along with a big ribeye, this bull is easy on the eyes. Maternal sib to 114L is the \$40,000 reserve national champion bull, DCF Dilly. 642Z is a producing machine, producing high quality individuals year after year.
- Ranks in the top 10% for 5 traits.



DCF 642Z DALLAS 144L ET



WHR RMB109 BEEFMAID 642Z - Dam of Lot 8



BLZ HOUSTON J120 L047

9

BLZ HOUSTON J120 L047 (DLF,HYF,IEF,MSUDF)

BULL



P44509084 | Calved: 8/13/23 | Tattoo: BE L047 | Polled
 SHF DAYBREAK Y02 D287 ET (CHB)(DLF,HYF,IEF,MSUDF)
 SHF HOUSTON D287 H086 (CHB)(DLF,HYF,IEF,MSUDF,MDF,DBF)
 P44123641 SHF MISS 14 20Z D223 (DLF,HYF,IEF,DBF)



LOEWEN GENESIS G16 ET (CHB)(DLF,HYF,IEF,MDF,DBF)
 DCF MS EXCEDE 8022 G16 J120ET (DLF,HYF,IEF,MSUDF)
 P44339872 BTF WF MS EXCEDE 4004 8022 (DLF,HYF,IEF,MSUDF,MDF)

CEU	BW	WW	YW	DMI	SC	SCF	MILK	M&G	CEM	MCW											
3.7	46%	3.7	72%	64	17%	117	3%	0.6	89%	1.9	2%	21.1	16%	29	35%	61	23%	1.8	46%	110	88%
UDDR	TEAT	CW	MARB	REA	FAT	BMI	BII	CHB													
1.50	2%	1.40	12%	97	2%	0.21	24%	0.80	5%	0.053	86%	460	8%	550	9%	164	4%				

- **Homozygous Polled**
- Dark red, stout featured, homo polled son of Houston out of a 2-year-old Genesis daughter that can flat raise one. Love the overall outline and balance L047 possesses, tons of natural muscle shape and bone in a stylish package. A big growth bull as he ranks in the top 3% of the breed for yearling weight along with added REA and carcass weight. Big time opportunity.
- Ranks in the top 10% for 8 traits.



RTF WLKR 8101 HEADLINER L40

10

BLZ HOUSTON J001 L057 (DLF,HYF,IEF,MSUDF)

BULL



P44509086 | Calved: 8/18/23 | Tattoo: RE BLZ/LE L057 | Polled
 SHF DAYBREAK Y02 D287 ET (CHB)(DLF,HYF,IEF,MSUDF)
 SHF HOUSTON D287 H086 (CHB)(DLF,HYF,IEF,MSUDF,MDF,DBF)
 P44123641 SHF MISS 14 20Z D223 (DLF,HYF,IEF,DBF)



LOEWEN GENESIS G16 ET (CHB)(DLF,HYF,IEF,MDF,DBF)
 BLZ DANCE G16 J001ET
 P44268662 WALKER JH DANCE X51 2042 675D (DLF,HYF,IEF,MSUDF,MDF,DBF)

CEU	BW	WW	YW	DMI	SC	SCF	MILK	M&G	CEM	MCW											
6.1	26%	2.8	51%	74	2%	127	1%	0.5	88%	1.8	2%	24.1	5%	31	26%	68	7%	2.9	33%	100	73%
UDDR	TEAT	CW	MARB	REA	FAT	BMI	BII	CHB													
1.50	2%	1.60	1%	96	2%	0.41	5%	0.85	4%	0.033	63%	520	2%	633	2%	186	1%				

- **Homozygous Polled**
- **Recommended for use on heifers**
- You want to talk about a Houston son that is a premium combination herd sire prospect? L057 is a bull you don't want to miss sale day. This young stud stems back to many of the breed's greats like Genesis, X51, Daybreak, just to name a few. Study the EPD this bull has, Top growth for WW and YW. Top of the breed for his maternal traits and carcass merit. Big time figures here.
- Ranks in the top 10% for 13 traits.

11

RTF WLKR 8101 HEADLINER L40 (DLF,HYF,IEF,MSUDF)

BULL



P44514226 | Calved: 9/8/23 | Tattoo: BE L40 | Polled
 INNISFAIL WHR X651/723 4013 ET (CHB)(DLF,HYF,IEF,MSUDF,MDF)
 RTF 4013 C144 HEADLINER H38 ET (CHB)(DLF,HYF,IEF,MSUDF,MDF,DBF)
 P44175653 FPH MS REVOLUTION C144 (DLF,HYF,IEF,MDF,DBF)



LJR 023R WHITMORE 10W (SOD)(DLF,HYF,IEF,MSUDF,MDF,DBF)
 WALKER BETH 10W Y479 8101F ET (DLF,HYF,IEF,MSUDF)
 P43973201 GRNDVIEW CMR BETH 156T Y479 ET (DLF,HYF,IEF,MSUDF)

CEU	BW	WW	YW	DMI	SC	SCF	MILK	M&G	CEM	MCW											
5.8	28%	0.9	15%	72	4%	107	12%	0.4	70%	1.3	19%	25.8	2%	34	12%	70	5%	9.6	1%	129	99%
UDDR	TEAT	CW	MARB	REA	FAT	BMI	BII	CHB													
1.20	54%	1.30	29%	84	12%	0.42	5%	0.61	20%	-0.007	8%	536	1%	649	1%	167	4%				

- **Homozygous Polled**
- **Recommended for use on heifers**
- Big time beef bull. This Headliner son is a bull that stems back to a maternal sister to the "Carcass Queen" 333. Love the foot size and overall stoutness L40 has. Big bodied, loose structured, well-balanced bull that will add a lot of value to the cowboy that buys him. This bull will have many friends sale day. Study the marbling EPD of .42.
- Ranks in the top 10% for 9 traits.
- Owned with Ridgetop Farms



DCF 864F GENERAL 146L ET

12

DCF 864F GENERAL 146L ET (DLF,HYF,IEF,MSUDF)

BULL **DRY CREEK** P44564392 | Calved: 10/17/23 | Tattoo: BE 146L | Polled
 EFBEF BR VALIDATED B413 (SOD)(CHB)(DLF,HYF,IEF,MSUDF,MDF,DBF)
SPEARHEAD 4 STAR GENERAL (CHB)(DLF,HYF,IEF,MSUDF,MDF)
 P44015253 **SPEARHEAD A246 DEARIE D1** (DLF,HYF,IEF,MSUDF,MDF,DBF)
 /S JBB/AL BOOM TOWN 44608 (SOD)(CHB)(DLF,HYF,IEF,MSUDF,MDF,DBF)
/S LADY BOOM TOWN 864F ET (DLF,HYF,IEF,MSUDF,MDF,DBF)
 P43953943 **LOEWEN MISS ON TARGET 10Y 1A** (DLF,HYF,IEF,MSUDF,DBP)



ACT. BW
64
ADJ. WW
ADJ. YW
1177
ADJ. REA
12.84
ADJ. MARB
3.37

CEU	BW	WW	YW	DMI	SC	SCF	MILK	M&G	CEM	MCW											
1.0	71%	3.9	76%	72	4%	119	3%	0.5	84%	1.8	2%	13.9	79%	31	24%	67	8%	3.7	24%	103	79%
UDDR	TEAT	CW	MARB	REA	FAT	BMI	BII	CHB													
1.20	54%	1.10	81%	99	2%	0.41	5%	1.02	1%	0.073	96%	375	42%	479	28%	184	1%				

• **Homozygous Polled**

- Big, long stretchy made bull that has been a standout since birth. 146L is a well balanced bull and is sound from the ground up with added muscle shape and dimension. Study the pedigree as he has three generations of donors in his pedigree working in multiple herds from coast to coast. A maternal brother is a herd bull for us and our partners Blazer Farms. Tons of added ribeye and marbling in this phenotypic standout.
- Ranks in the top 10% for 8 traits.

13

DCF J51 ENDURE 143L (DLF,HYF,IEF,MSUDF)

BULL **DRY CREEK** P44564394 | Calved: 10/20/23 | Tattoo: BE 143L | Scurred
 NJW 79Z Z311 ENDURE 173D ET (SOD)(CHB)(DLF,HYF,IEF,MSUDF,MDF,DBF)
BF ENDURE 0411 ET (DLF,HYF,IEF,MSUDF)
 P44229822 **RAMSEY'S GABRIELLE PAM ET** (DLF,HYF,IEF,MSUDF)
 LOEWEN GENESIS G16 ET (CHB)(DLF,HYF,IEF,MDF,DBF)
DCF 8022 MS GENESIS J51 ET (DLF,HYF,IEF,MSUDF)
 P44331313 **BTF WF MS EXCEDE 4004 8022** (DLF,HYF,IEF,MSUDF,MDF)



ACT. BW
65
ADJ. WW
ADJ. YW
1201
ADJ. REA
12.58
ADJ. MARB
2.84

CEU	BW	WW	YW	DMI	SC	SCF	MILK	M&G	CEM	MCW											
12.5	3%	0.6	12%	67	11%	111	7%	0.5	84%	1.5	9%	25.7	3%	35	9%	68	6%	4.3	19%	76	22%
UDDR	TEAT	CW	MARB	REA	FAT	BMI	BII	CHB													
1.40	8%	1.40	12%	104	1%	0.44	4%	0.83	4%	0.093	99%	543	1%	654	1%	190	1%				

• **Recommended for use on heifers**

- This big red goggled eyed bull is one you don't want to miss. You want to talk about a young herd sire that moves like a cat 143L fits the bill. 143L is the natural calf out of J51 one of our top up-and-coming young donors we own with our friends at Lamb Bros. in WI. You will hear more and more about J51 real soon as she is really special, and you can see why. Big bodied, cool necked, loaded with muscle shape and eye appeal. Did I mention he is an elite calving ease bull to boot, with world of growth, added maternal and carcass merit? Not much he doesn't do. Opportunity is knocking.
- Ranks in the top 10% for 13 traits.



DCF J51 ENDURE 143L



WLKR JH REDBIRD 1506 3246

14

BULL

WLKR JH REDBIRD 1506 3246 (DLF,HYF,IEF,MSUDF)

/W P44549257 | Calved: 8/21/23 | Tattoo: LE 3246 | Polled
 CHURCHILL RED BARON 8300F ET (DLF,HYF,IEF,MSUDF,MDF,DBF)
 BIRDWELL REDBIRD 7098 0558ET (CHB)(DLF,HYF,IEF,MSUDF,MDF,DBF)
 P44254851 BR VALIDATED B413 6035 7098 (DLF,HYF,IEF,MDF,DBF)



DM ALL AROUND 904G ET (CHB)(DLF,HYF,IEF,MSUDF,MDF)
 WLKR SR JH ROSE 904G 1506 ET (DLF,HYF,IEF,MSUDF,MDF)
 P44320565 CMF 64Z ROSE 172C (DLF,HYF,IEF,MSUDF)

ACT. BW

71

ADJ. WW

ADJ. YW

1226

ADJ. REA

12.51

ADJ. MARB

2.47

CED	BW	WW	YW	DMI	SC	SCF	MILK	M&G	CEM	MCW											
6.1	26%	0.3	9%	61	28%	97	31%	0.4	74%	0.9	59%	23.6	6%	24	69%	55	53%	5.4	11%	99	71%
UDDR	TEAT	CW	MARB	REA	FAT	BMI	BII	CHB													
1.50	2%	1.60	1%	81	16%	0.43	4%	0.85	4%	0.033	63%	495	4%	596	3%	162	5%				

- **Homozygous Polled**
- **Recommended for use on heifers**
- 3246 is a stout made, deep bodied son of the popular AI sire Redbird. This dark red goggle-eyed herd sire prospect is a standout in many visitors' opinion. 3246 is a great heifer safe option as he is low BW with added growth, maternal and carcass traits. This is a bull that will add value to any herd whether you are retaining the females or sending them to the rail, rest assured 3246 will get the job done.
- Ranks in the top 10% for 9 traits.

15

BULL

WLKR JH REDBIRD 117J 3247 (DLF,HYF,IEF,MSUDF)

/W P44549258 | Calved: 8/22/23 | Tattoo: LE 3247 | Polled
 CHURCHILL RED BARON 8300F ET (DLF,HYF,IEF,MSUDF,MDF,DBF)
 BIRDWELL REDBIRD 7098 0558ET (CHB)(DLF,HYF,IEF,MSUDF,MDF,DBF)
 P44254851 BR VALIDATED B413 6035 7098 (DLF,HYF,IEF,MDF,DBF)



LOEWEN GENESIS G16 ET (CHB)(DLF,HYF,IEF,MDF,DBF)
 SR GLENDA 117J ET (DLF,HYF,IEF,MSUDF)
 P44284742 SR HOMETOWN GIRL 501C ET (DLF,HYF,IEF,MSUDF,MDF)

ACT. BW

72

ADJ. WW

ADJ. YW

1163

ADJ. REA

13.02

ADJ. MARB

2.40

CED	BW	WW	YW	DMI	SC	SCF	MILK	M&G	CEM	MCW											
2.3	59%	2.2	37%	68	9%	112	6%	0.5	82%	1.3	19%	23.8	6%	30	29%	64	14%	3.9	22%	114	92%
UDDR	TEAT	CW	MARB	REA	FAT	BMI	BII	CHB													
1.50	2%	1.40	12%	81	16%	0.54	2%	0.47	43%	0.063	92%	498	3%	616	2%	169	3%				

- **Homozygous Polled**
- Big growth son of Redbird back to a highly maternal dam that stems back to some of the breed's greats. You must love the added length and overall boldness 3247 exhibits. Loaded with muscle shape and extension, this dark red stud is easy to pick out. Add to your herd bull battery today with confidence.
- Ranks in the top 10% for 8 traits.



WLKR JH REDBIRD 117J 3247



WLKR JH REDBIRD 117J 3247



BLZ DESPERADO 675D L039ET

16

BULL

BLZ DESPERADO 675D L039ET {DLF,HYF,IEF,MSUDF}

P44493245 | Calved: 8/10/23 | Tattoo: RE BLZ/LE L039 | Polled
 CHURCHILL BROADWAY 858F (CHB){DLF,HYF,IEF,MSUDF,MDF,DBF}
 CHURCHILL DESPERADO 029H (CHB){DLF,HYF,IEF,MSUDF,MDF,DBF}
 P44149846 CHURCHILL LADY 8251F ET (DLF,HYF,IEF,MSUDF)



KCF BENNETT REVOLUTION X51 {SOD}{CHB}{DLF,HYF,IEF,MDF,DBF}
 WALKER JH DANCE X51 2042 675D (DLF,HYF,IEF,MSUDF,MDF,DBF)
 P43688034 CKP 138X DANCE 2042 (DLF,HYF,IEF)

ACT. BW

85

ADJ. WW

654

ADJ. YW

ADJ. REA

ADJ. MARB

CED	BW	WW	YW	DMI	SC	SCF	MILK	M&G	CEM	MCW											
1.1	70%	4.1	79%	72	4%	117	3%	0.5	81%	1.3	19%	24.9	3%	34	12%	70	4%	7.4	3%	138	100%
UDR	TEAT	CW	MARB	REA	FAT	BMI	CHB														
1.60	1%	1.60	1%	92	4%	0.34	8%	0.70	11%	0.023	47%	526	2%	634	2%	170	3%				

• What a set of flush mate brothers out of the ever-famed Broadway son, Churchill Desperado 029H. The dam of this mating is one of the very best overall donors at /W. 675D was a daughter of the perfect uddered donor we called "Dance". When you analyze these brothers, you will find high quality individuals that are dark red with full pigment added growth and Homozygous Polled. When you study the EPD profiles you will find bulls that are loaded with growth, maternal, and added carcass merit. The homework is done. Let these Desperado sons go out and make you money.

• Lot 16: **Homozygous Polled** • Ranks in the top 10% for 12 traits.

• Lot 17: **Homozygous Polled** • Ranks in the top 10% for 8 traits.

17

BULL

BLZ DESPERADO 675D L035ET {DLF,HYF,IEF,MSUDF}

P44508984 | Calved: 8/8/23 | Tattoo: RE BLZ/LE L035 | Polled
 CHURCHILL BROADWAY 858F (CHB){DLF,HYF,IEF,MSUDF,MDF,DBF}
 CHURCHILL DESPERADO 029H (CHB){DLF,HYF,IEF,MSUDF,MDF,DBF}
 P44149846 CHURCHILL LADY 8251F ET (DLF,HYF,IEF,MSUDF)



KCF BENNETT REVOLUTION X51 {SOD}{CHB}{DLF,HYF,IEF,MDF,DBF}
 WALKER JH DANCE X51 2042 675D (DLF,HYF,IEF,MSUDF,MDF,DBF)
 P43688034 CKP 138X DANCE 2042 (DLF,HYF,IEF)

ACT. BW

77

ADJ. WW

ADJ. YW

ADJ. REA

ADJ. MARB

CED	BW	WW	YW	DMI	SC	SCF	MILK	M&G	CEM	MCW											
3.3	50%	3.0	56%	66	14%	106	12%	0.3	68%	1.5	9%	26.9	2%	32	17%	65	12%	6.6	6%	117	94%
UDR	TEAT	CW	MARB	REA	FAT	BMI	CHB														
1.60	1%	1.60	1%	70	53%	0.35	8%	0.59	22%	0.053	86%	528	2%	632	2%	139	17%				

18

BULL

BLZ DESPERADO 675D L051ET {DLF,HYF,IEF,MSUDF}

P44509009 | Calved: 8/15/23 | Tattoo: RE BLZ/LE L051 | Polled
 CHURCHILL BROADWAY 858F (CHB){DLF,HYF,IEF,MSUDF,MDF,DBF}
 CHURCHILL DESPERADO 029H (CHB){DLF,HYF,IEF,MSUDF,MDF,DBF}
 P44149846 CHURCHILL LADY 8251F ET (DLF,HYF,IEF,MSUDF)



KCF BENNETT REVOLUTION X51 {SOD}{CHB}{DLF,HYF,IEF,MDF,DBF}
 WALKER JH DANCE X51 2042 675D (DLF,HYF,IEF,MSUDF,MDF,DBF)
 P43688034 CKP 138X DANCE 2042 (DLF,HYF,IEF)

ACT. BW

85

ADJ. WW

530

ADJ. YW

ADJ. REA

ADJ. MARB

CED	BW	WW	YW	DMI	SC	SCF	MILK	M&G	CEM	MCW											
-1.1	85%	3.5	68%	64	20%	105	14%	0.2	41%	0.9	59%	27.8	1%	28	40%	60	28%	2.5	38%	124	98%
UDR	TEAT	CW	MARB	REA	FAT	BMI	CHB														
1.60	1%	1.60	1%	76	30%	0.33	9%	0.57	25%	0.073	96%	549	1%	651	1%	147	11%				

- **Homozygous Polled**
- Ranks in the top 10% for 6 traits.



BLZ DESPERADO 675D L035ET



DCF G41 COMMAND 92L



LOEWEN ELLIE B42 G41 ET — Dam of Lot 19

19

DCF G41 COMMAND 92L (DLF,HYF,IEF,MSUDF)

BULL **DRY CAREK** P44493079 | Calved: 9/7/23 | Tattoo: BE 92L | Polled
 SCHU-LAR ON TARGET 22S (SOD)[(CHB)(DLF,HYF,IEF,MSUDF,MDF,DBF)]
SPEARHEAD 22S CORPS COMMANDE14 (CHB)(DLF,HYF,IEF,MDF,DBF)
 P43850912 **SPEARHEAD LULU BELLE B27** (OOD)(DLF,HYF,IEF,MSUDF,MDF,DBF)
 SHF ELLISON 167Y E149 (CHB)(DLF,HYF,IEF,MDF,DBF)
LOEWEN ELLIE B42 G41 ET (DLF,HYF,IEF,MSUDF,MDF,DBF)
 P44103136 **LOEWEN 77 48 MISS 344N 4RB42ET** (DLF,HYF,DBP)



ACT. BW
82
ADJ. WW
ADJ. YW
ADJ. REA
ADJ. MARB

CED	BW	WW	YW	DMI	SC	SCF	MILK	M&G	CEM	MCW											
4.8	36%	2.1	35%	62	24%	108	10%	0.4	77%	1.3	19%	18.4	35%	22	79%	53	60%	6.9	5%	94	62%
1.50	2%	1.50	4%	79	21%	0.40	5%	0.40	59%	0.063	92%	403	27%	503	20%	154	7%				

- **Homozygous Polled**
- **Recommended for use on heifers**
- Dark red, rugged made bull that's loaded with red meat. This son of Command is a cowboy's dream. The dam of 92L is a maternal sister to the \$100,000 Loewen Genesis. 92L possesses added growth, high maternal traits and added marbling. What a package here.
- Ranks in the top 10% for 6 traits.

20

DCF 33D DILLY 147L ET (DLF,HYF,IEF,MSUDF)

BULL **DRY CAREK** P44564390 | Calved: 10/10/23 | Tattoo: BE 147L | Polled
 BR DUNCAN 4142 (DLF,HYF,IEF,MSUDF)
DCF 642Z DILLY 002H (DLF,HYF,IEF,MSUDF,MDF)
 44140026 **WHR RMB109 BEEFMAID 642Z** (DLF,HYF,IEF,MSUDF)
 CHEZ AA NEXT LEVEL ET (CHB)(DLF,HYF,IEF,MSUDF,MDF,DBF)
HAPP DARLA 33D ET (DLF,HYF,IEF,MSUDF)
 P43730490 **JSF 12N LADY VAL 9T** (DLF,HYF,IEF)



ACT. BW
70
ADJ. WW
ADJ. YW
ADJ. REA
ADJ. MARB

CED	BW	WW	YW	DMI	SC	SCF	MILK	M&G	CEM	MCW											
-2.6	92%	2.7	49%	59	38%	93	42%	0.4	78%	1.0	48%	15.7	62%	26	53%	56	48%	-2.0	87%	98	69%
1.30	25%	1.20	56%	67	66%	-0.15	100%	0.50	37%	-0.047	1%	327	72%	383	78%	88	97%				

- 147L is a long stretchy made bull that's sound as a cat. Sired by the \$40,000 Dilly, back to one of the high-quality donors, Darla 33D. If you like to raise big stout heavy calves this is your guy.



DCF 123 MR DILL 65L ET

21

DCF 123 MR DILL 65L ET (DLF,HYF,IEF,MSUDF)

BULL **DRY CAREK** P44564402 | Calved: 10/19/23 | Tattoo: BE 65L | Polled
 BR DUNCAN 4142 (DLF,HYF,IEF,MSUDF)
DCF 642Z DILLY 002H (DLF,HYF,IEF,MSUDF,MDF)
 44140026 **WHR RMB109 BEEFMAID 642Z** (DLF,HYF,IEF,MSUDF)
 UPS ENTICE 9365 ET (CHB)(DLF,HYF,IEF,MSUDF)
H BL CARMEL 123 ET (DLF,HYF,IEF,MSUDF)
 P44266541 **BW 61D MOCHA 913G** (DLF,HYF,IEF,MSUDF)



ACT. BW
79
ADJ. WW
ADJ. YW
ADJ. REA
ADJ. MARB

CED	BW	WW	YW	DMI	SC	SCF	MILK	M&G	CEM	MCW											
0.0	78%	3.1	58%	64	19%	101	21%	0.6	92%	1.4	13%	21.1	16%	36	6%	68	6%	1.0	57%	56	5%
1.40	8%	1.40	12%	79	21%	0.10	54%	0.64	16%	0.033	63%	423	19%	505	19%	120	45%				

- 65L is a standout and has been for a longtime. A phenotypic star, with tons of body shape and overall length and pounds. Sired by the \$40,000 Dilly, out of a donor that stems back to one of the best donors at the Hoffman Ranch, Mocha 913G. Pay attention here, the real cowboys will find this one.
- Ranks in the top 10% for 4 traits.

22 DCF G43 MR SLINGER 111L ET (DLF,HYF,IEF,MSUDF,MDF,DBF)

BULL **DRY CREEK** P44527461 | Calved: 10/5/23 | Tattoo: BE 111L | Polled
 UPS SENSATION 2296 ET (SOD)(DLF,HYF,IEF,MSUDF,MDF,DBC)
LAND SLINGER 2296 1046 (DLF,HYF,IEF,MSUDF,MDF,DBC)
 P44290168 UPS MISS FINAL TEST 9103 (DLF,HYF,IEF,MSUDF,MDF,DBF)
 SHF ELLISON 167Y E149 (CHB)(DLF,HYF,IEF,MDF,DBF)
LOEWEN ELLIE 842 G43 ET (DLF,HYF,IEF,MSUDF,MDF,DBF)
 P44103137 LOEWEN 77 48 MISS 344N 4RB42ET (DLF,HYF,DBP)

CEU	BW	WW	YW	DMI	SC	SCF	MILK	M&G	CEM	MCW											
4.7	37%	3.0	56%	69	8%	113	6%	0.5	88%	0.8	69%	20.9	17%	32	20%	66	10%	3.9	22%	130	99%
UDDR	TEAT	CW	MARB	REA	FAT	BMI	BII	CHB													
1.40	8%	1.40	12%	87	8%	0.22	22%	0.87	3%	0.053	86%	452	10%	546	9%	148	10%				

- **Recommended for use on heifers**
- Here is a set of bulls out of the past National Champion Bull, Land Slinger. These Slingers have been high performing that come along with tons of look and quality. 111L is a high growth bull that's high for maternal traits and carcass. Keep all the daughters out of this bull as his donor dam was one high-quality individual.
- Ranks in the top 10% for 8 traits.



LAND SLINGER 2296 1046 – Sire of Lots 22 - 25

23 WLKR LF SLINGER 9381 3155L ET (DLF,HYF,IEF,MSUDF,MDF,DBC)

BULL **/W** P44550895 | Calved: 11/27/23 | Tattoo: LE 3155 | Scurred
 UPS SENSATION 2296 ET (SOD)(DLF,HYF,IEF,MSUDF,MDF,DBC)
LAND SLINGER 2296 1046 (DLF,HYF,IEF,MSUDF,MDF,DBC)
 P44290168 UPS MISS FINAL TEST 9103 (DLF,HYF,IEF,MSUDF,MDF,DBF)
 NJW 127Z 93C PARTNER 134E (DLF,HYF,IEF,MSUDF,MDF,DBF)
PCC NEW MEXICO LADY 9381 (DLF,HYF,IEF,MSUDF)
 P44115301 C&M NEW MEXICO LADY 3055 (DLF,HYF,IEF,MSUDF)

CEU	BW	WW	YW	DMI	SC	SCF	MILK	M&G	CEM	MCW											
1.6	66%	3.7	72%	81	1%	124	2%	0.7	94%	1.0	48%	25.8	2%	43	1%	84	1%	2.6	36%	115	93%
UDDR	TEAT	CW	MARB	REA	FAT	BMI	BII	CHB													
1.40	8%	1.50	4%	98	2%	0.13	44%	1.14	1%	0.043	77%	536	1%	637	1%	153	8%				

- What a phenotypic and numerical standout. Love the overall body and muscle shape this bull exhibits. This is a Slinger son that is sound footed, smooth jointed and a joy to look at. You won't have a hard time finding him Feb. 1. Check out the EPD profile of this cat, yellow boxes everywhere.
- Ranks in the top 10% for 11 traits



WLKR LF SLINGER 9381 3155L ET

24 WLKR LF SLINGER 799E 3157L ET (DLF,HYF,IEF,MSUDF,MDF,DBC)

BULL **/W** 44550896 | Calved: 11/28/23 | Tattoo: LE 3157 | Horned
 UPS SENSATION 2296 ET (SOD)(DLF,HYF,IEF,MSUDF,MDF,DBC)
LAND SLINGER 2296 1046 (DLF,HYF,IEF,MSUDF,MDF,DBC)
 P44290168 UPS MISS FINAL TEST 9103 (DLF,HYF,IEF,MSUDF,MDF,DBF)
 CL 1 DOMINO 215Z (SOD)(CHB)(DLF,HYF,IEF,MSUDF,MDF)
WALKER JH ROSE 215Z 4209 799E (DOD)(DLF,HYF,IEF,MDF,DBF)
 P43906467 WALKER JH ROSE 4R 87W 4209 (DBP)

CEU	BW	WW	YW	DMI	SC	SCF	MILK	M&G	CEM	MCW											
-2.1	90%	4.0	77%	80	1%	122	2%	0.5	83%	1.1	37%	19.8	24%	34	13%	74	2%	-0.5	74%	136	100%
UDDR	TEAT	CW	MARB	REA	FAT	BMI	BII	CHB													
1.40	8%	1.40	12%	104	1%	0.27	15%	1.07	1%	0.073	96%	464	8%	571	6%	173	3%				

- Wide based from the ground up. Love this bull's boldness and overall structure. Big time feeder calf producer here. Out of one of the powerful donors ever produced at /W, 799E, now working in the MG/4M Farms program in Mississippi. Maternal sister to 3157 is a past high-seller in the 2023 Foundations for the Future sale for \$14,000 to Dry Creek Farms. Big ribeye in this calf to boot.
- Ranks in the top 10% for 9 traits.



WLKR LF SLINGER 799E 3157L ET

25 WLKR LF SLINGER 0021H 3146L ET (DLF,HYF,IEF,MSUDF,MDF,DBC)

BULL **/W** 44550894 | Calved: 11/7/23 | Tattoo: LE 3146 | Horned
 UPS SENSATION 2296 ET (SOD)(DLF,HYF,IEF,MSUDF,MDF,DBC)
LAND SLINGER 2296 1046 (DLF,HYF,IEF,MSUDF,MDF,DBC)
 P44290168 UPS MISS FINAL TEST 9103 (DLF,HYF,IEF,MSUDF,MDF,DBF)
 NJW 79Z Z311 ENDURE 173D ET (SOD)(CHB)(DLF,HYF,IEF,MSUDF,MDF,DBF)
/S LADY ENDURE 0021H ET (DLF,HYF,IEF,MSUDF)
 P44164376 /S LADY ON TARGET 5002C ET (DLF,HYF,IEF,MSUDF)

CEU	BW	WW	YW	DMI	SC	SCF	MILK	M&G	CEM	MCW											
7.4	18%	3.3	63%	67	10%	108	11%	0.7	95%	1.6	6%	22.0	11%	34	13%	67	8%	6.0	8%	126	98%
UDDR	TEAT	CW	MARB	REA	FAT	BMI	BII	CHB													
1.40	8%	1.30	29%	103	1%	0.13	44%	0.98	1%	0.063	92%	475	6%	562	7%	154	7%				

- **Recommended for use on heifers**
- The Slinger x Endure cross has really worked and 3146 is a great example of that. Square hiped, long, heavy and good is the best way to describe this calf. Add value with adding 3146 to your herd.
- Ranks in the top 10% for 10 traits.



WLKR LF SLINGER 0021H 3146L ET



DCF 30D MR COPPER 148L ET

26

DCF 30D MR COPPER 148L ET (DLF,HYF,IEF,MSUDF,MDF,DBC)

BULL **DRY CREEK** *Genetic* 44564397 | Calved: 10/13/23 | Tattoo: BE148L | Horned

BR CSF COPPER ET (DLF,HYF,IEF,MSUDF)
BR COPPER 124Y (DLF,HYF,IEF)
 43273909 BR ABIGAIL 8130 ET (DLF,HYF,IEF)

ECR RO RUSHMORE 418 ET (DLF,HYF,IEF,MDF,DBC)

BLME ANGEL 30D (DLF,HYF,IEF,MDF,DBC)
 P43775080 BLME ANGEL 49U (HYP)

ACT. BW
75
ADJ. WW
NA
ADJ. YW
NA
ADJ. REA
NA
ADJ. MARB
NA

27

DCF 30D MR COPPER 145L ET (DLF,HYF,IEF,MSUDF,MDF,DBC)

BULL **DRY CREEK** *Genetic* P44564396 | Calved: 10/10/23 | Tattoo: BE145L | Polled

BR CSF COPPER ET (DLF,HYF,IEF,MSUDF)
BR COPPER 124Y (DLF,HYF,IEF)
 43273909 BR ABIGAIL 8130 ET (DLF,HYF,IEF)

ECR RO RUSHMORE 418 ET (DLF,HYF,IEF,MDF,DBC)

BLME ANGEL 30D (DLF,HYF,IEF,MDF,DBC)
 P43775080 BLME ANGEL 49U (HYP)

ACT. BW
80
ADJ. WW
NA
ADJ. YW
922
ADJ. REA
8.73
ADJ. MARB
2.23



CEU	BW	WW	YW	DMI	SC	SCF	MILK	M&G	CEM	MCW											
-0.5	81%	4.8	89%	67	11%	105	14%	0.2	55%	1.1	37%	17.5	44%	33	15%	67	9%	-2.3	89%	111	90%
UDDR	TEAT	CW	MARB	REA	FAT	BMI	CHB														
1.15	80%	1.20	58%	77	28%	0.00	86%	0.52	35%	-0.007	8%	380	39%	456	39%	119	46%				

CEU	BW	WW	YW	DMI	SC	SCF	MILK	M&G	CEM	MCW											
1.5	66%	4.0	77%	66	14%	98	29%	0.3	62%	1.1	37%	20.8	17%	37	5%	70	4%	-3.3	94%	90	53%
UDDR	TEAT	CW	MARB	REA	FAT	BMI	CHB														
1.20	54%	1.30	29%	64	77%	-0.02	90%	0.42	54%	0.003	16%	407	25%	483	27%	94	94%				

- Easy fleshing horned bull that is big ribbed, big boned and stout. If you are looking to add pounds to a calf crop, this Copper 124Y son is the man for the job. Big time quality here.
- Full Brother sells as Lot 27

- Excellent growth bull sired by Copper 124Y. This stout polled bull will add shape and excellent structure to his calf crop. Add pounds and maternal with this high quality individual.
- Full Brother sells as Lot 26



BR COPPER 124Y — Sire of Lots 26 and 27



Watch the sale and bid live online.

Videos will be available online at LiveAuctions.TV after Jan. 20, 2025.

Please visit LiveAuctions.tv to create an account.
 Contact Erick Schmidt at 830-263-0166



BLZ VALIDATED F101 L064ET

28

BULL

BLZ VALIDATED F101 L064ET {DLF,HYF,IEF,MSUDF}

P44509027 | Calved: 8/20/23 | Tattoo: RE BLZ/LE L064 | Polled
 EFBEFF TFL U208 TESTED X651 ET (SOD){CHB}{DLF,HYF,IEF,MSUDF}
 EFBEFF BR VALIDATED B413 (SOD){CHB}{DLF,HYF,IEF,MSUDF,MDF,DBF}
 P43558667 EFBEFF 4R THYRA Y865 {DLF,HYF,IEF,MDF,DBC}



NJW 33TB 100W TRUST 167Y {SOD}{CHB}{DLF,HYF,IEF,MSUDF,MDF}

WLKR JM LASS 167Y 333 F101 ET {DLF,HYF,IEF}

P43914491 WALKER LASS X51 Y479 333 {DLF,HYF,IEF,MSUDF}

ACT. BW

71

ADJ. WW

ADJ. YW

ADJ. REA

ADJ. MARB

CED	BW	WW	YW	DMI	SC	SCF	MILK	M&G	CEM	MCW											
4.1	42%	1.0	16%	55	57%	90	51%	0.3	57%	1.0	48%	30.3	1%	31	26%	58	37%	9.2	1%	93	60%
UDDR	TEAT	CW	MARB	REA	FAT	BMI	BII	CHB													
1.50	2%	1.40	12%	73	39%	1.08	1%	0.96	2%	0.063	92%	628	1%	769	1%	216	1%				

• **Homozygous Polled**

• **Recommended for use on heifers**

• Big time herd bull prospect. This standout Validated son is the only bull in the Hereford breed with his combination of CW, REA and MARB. This direct son of the "Marbling King", Validated, may be one of the very best sons I have had the opportunity to appraise. Study the overall quality of this high marbling bull on hoof, with his dark red color, added pigment and muscle shape. Elite opportunity to elevate your program.

• Ranks in the top 10% for 8 traits.



TENNESSEE AGRICULTURE ENHANCEMENT PROGRAM

Majority of the bulls selling will qualify for the TAEP Grant Program.

WALKERHEREFORDFARM.COM



Walker Herefords

29

BULL

BLZ VALIDATED 127F L066 {DLF,HYF,IEF,MSUDF}

P44509030 | Calved: 8/20/23 | Tattoo: RE BLZ/LE L066 | Polled
 EFBEFF TFL U208 TESTED X651 ET (SOD){CHB}{DLF,HYF,IEF,MSUDF}
 EFBEFF BR VALIDATED B413 (SOD){CHB}{DLF,HYF,IEF,MSUDF,MDF,DBF}
 P43558667 EFBEFF 4R THYRA Y865 {DLF,HYF,IEF,MDF,DBC}



NJW 135U 10Y HOMETOWN 63A ET {CHB}{DLF,HYF,IEF,MSUDF,MDC}

WMC 63A VACA 127F {DLF,HYF,IEF,MSUDF,MDF}

P43974361 WMC 52Z MILK QUEEN 86B {HYP}

ACT. BW

76

ADJ. WW

597

ADJ. YW

ADJ. REA

ADJ. MARB

CED	BW	WW	YW	DMI	SC	SCF	MILK	M&G	CEM	MCW											
0.4	75%	2.3	39%	64	18%	99	26%	0.6	93%	0.7	79%	20.7	18%	25	61%	57	40%	1.5	50%	105	82%
UDDR	TEAT	CW	MARB	REA	FAT	BMI	BII	CHB													
1.30	25%	1.20	56%	73	41%	0.68	1%	0.74	8%	0.033	63%	451	10%	570	6%	168	4%				

• **Homozygous Polled**

• High quality son of Validated ready for heavy use. You want to raise a set of calves with added carcass merit that will pay dividends at the rail? Don't miss this opportunity.



EFBEFF BR VALIDATED B413 — Sire of Lots 28 and 29



30 WLKR JM GUARDIAN 333 3151L ET (DLF,HYF,IEF,MSUDF)

BULL /W P44535070 | Calved: 11/22/23 | Tattoo: LE 3151 | Polled
 LOEWEN GENESIS G16 ET (CHB)(DLF,HYF,IEF,MDF,DBF)
 C GKB GUARDIAN 1015 ET (CHB)(DLF,HYF,IEF,MSUDF,MDF,DBF)
 P44257548 C CJC BELLE AIR LASS 8037 ET (DLF,HYF,IEF,MSUDF,MDF,DBF)
 KCF BENNETT REVOLUTION X51 (SOD)(CHB)(DLF,HYF,IEF,MDF,DBF)
 WALKER LASS X51 Y479 333 (DLF,HYF,IEF,MSUDF)
 P43373464 GRNDVIEW CMR BETH 156T Y479 ET (DLF,HYF,IEF,MSUDF)



CEU	BW	WW	YW	DMI	SC	SCF	MILK	M&G	CEM	MCW											
-1.0	84%	4.1	79%	68	9%	112	7%	0.2	47%	1.4	13%	19.1	29%	34	13%	68	7%	-1.1	80%	107	85%
UDDR	TEAT	CW	MARB	REA	FAT	BMI	BII	CHB													
1.50	2%	1.50	4%	104	1%	0.57	2%	1.13	1%	0.033	63%	478	6%	591	4%	216	1%				

- A sound structured son of the famed "Carcass Queen 333". Sired by the \$300,000 C GKB Guardian 1015 ET. You want to talk about a calf that is bred for the times here he is. 3151 is one of the youngest of the group but it sure doesn't take away from the quality. Study the phenotype and EPD as 3151 excels for high growth, maternal and added carcass value.
- Ranks in the top 10 % for 11 traits.

31 WLKR JM SAFARI 333 3158L ET (DLF,HYF,IEF,MSUDF)

BULL /W P44537154 | Calved: 11/30/23 | Tattoo: LE 3158 | Polled
 NJW LONG HAUL 36E ET (DLF,HYF,IEF,MSUDF,MDF,DBF)
 SR EXPEDITION 619G ET (CHB)(DLF,HYF,IEF,MSUDF)
 P44054044 CHURCHILL LADY 7189E ET (DLF,HYF,IEF,MSUDF,MDF,DBF)
 KCF BENNETT REVOLUTION X51 (SOD)(CHB)(DLF,HYF,IEF,MDF,DBF)
 WALKER LASS X51 Y479 333 (DLF,HYF,IEF,MSUDF)
 P43373464 GRNDVIEW CMR BETH 156T Y479 ET (DLF,HYF,IEF,MSUDF)



CEU	BW	WW	YW	DMI	SC	SCF	MILK	M&G	CEM	MCW											
5.3	32%	0.8	14%	54	59%	87	60%	0.3	61%	1.5	9%	20.5	19%	41	2%	68	7%	5.6	10%	81	32%
UDDR	TEAT	CW	MARB	REA	FAT	BMI	BII	CHB													
1.50	2%	1.60	1%	80	20%	0.29	12%	0.69	12%	0.053	86%	437	14%	521	14%	143	13%				

- Recommended for use on heifers**
- Direct son of the calving ease deluxe SR Expedition out of the "Carcass Queen 333". Study the maternal attributes this dark red bull has. Keep all the daughters.
- Ranks in the top 10% for 9 traits.



32 WALKER FINAL TEST G92 3147L (DLF,HYF,IEF,MSUDF)

BULL /W P44534640 | Calved: 11/17/23 | Tattoo: LE 3147 | Polled
 EFBEEF TFL U208 TESTED X651 ET (SOD)(CHB)(DLF,HYF,IEF,MSUDF)
 F FINAL TEST 722 (CHB)(DLF,HYF,IEF,MSUDF,MDF,DBF)
 P43782451 F MS YORK 567 (DOD)(DLF,HYF,IEF,MSUDF)
 EFBEEF BR VALIDATED B413 (SOD)(CHB)(DLF,HYF,IEF,MSUDF,MDF,DBF)
 WLKR JM BETH B413 333 G92 ET (DLF,HYF,IEF,MSUDF)
 P44122779 WALKER LASS X51 Y479 333 (DLF,HYF,IEF,MSUDF)



CEU	BW	WW	YW	DMI	SC	SCF	MILK	M&G	CEM	MCW											
7.4	18%	-0.7	4%	62	24%	101	22%	0.2	45%	1.0	48%	24.7	4%	35	10%	66	10%	2.5	38%	90	52%
UDDR	TEAT	CW	MARB	REA	FAT	BMI	BII	CHB													
1.40	8%	1.40	12%	76	29%	0.85	1%	0.57	25%	0.073	96%	530	2%	663	1%	198	1%				

- Homozygous Polled**
- Recommended for use on heifers**
- Direct daughter of the resident herd sire, F Final Test 722, that's a sleep all night calving ease bull. 3147 is the natural calf out of one of our lead donors G92. Analyze the EPD profile as he exhibits calving ease, maternal, and added carcass merit, as well as being a 198 CHB\$.
- Ranks in the top 10% for 9 traits.



33 WLKR JH FINAL TEST J07 3261 (DLF,HYF,IEF,MSUDF)

BULL /W P44552362 | Calved: 10/11/23 | Tattoo: LE 3261 | Polled
 EFBEFF TFL U208 TESTED X651 ET (SOD)(CHB)(DLF,HYF,IEF,MSUDF)
F FINAL TEST 722 (CHB)(DLF,HYF,IEF,MSUDF,MDF,DBF)
 P43782451 F MS YORK 567 (DOD)(DLF,HYF,IEF,MSUDF)



INNISFAIL WHR X651/723 4013 ET (CHB)(DLF,HYF,IEF,MSUDF,MDF)
4B 4013 MS WESTBROOK J07 (DLF,HYF,IEF,MSUDF,MDF)
 P44295117 GTW 515 MISS BARTLETT 831

ACT. BW 73
 ADJ. WW 1028
 ADJ. YW 1028
 ADJ. REA 13.47
 ADJ. MARB 2.76

CEU	BW	WW	YW	DMI	SC	SCF	MILK	M&G	CEM	MCW											
5.8	28%	1.9	31%	70	6%	112	7%	0.2	54%	0.6	86%	25.7	3%	25	61%	60	28%	5.4	11%	117	95%
UDDR	TEAT	CW	MARB	REA	FAT	BMI	BII	CHB													
1.40	8%	1.30	29%	73	41%	0.73	1%	0.26	84%	0.103	100%	526	2%	662	1%	176	2%				

- **Recommended for use on heifers**
- Stout, rugged made son of Final Test 722 that stems back to a daughter of 4013. This 100% pigmented, big footed herd bull prospect has the genetic make-up and phenotype to be a value-added herd bull for his new owner. He has low birth to high growth with high maternal traits and carcass to boot.
- Ranks in the top 10% for 8 traits.

34 WLKR JH SIGNIFICANT821F 3114L (DLF,HYF,IEF,MSUDF)

BULL /W P44552250 | Calved: 9/24/23 | Tattoo: LE 3114 | Polled
 SCHU-LAR ASSET 36F (CHB)(DLF,HYF,IEF,MSUDF)
SCHU-LAR SIGNIFICANT 43H (CHB)(DLF,HYF,IEF,MSUDF,MDF)
 P44159459 SCHU-LAR 2E SOCIETY 27X 10Y (DLF,HYF,IEF,MSUDF,MDF)



CL 1 DOMINO 215Z (SOD)(CHB)(DLF,HYF,IEF,MSUDF,MDF)
WLKR JH LASS 215Z 625D 821F (DLF,HYF,IEF,MDF,DBF)
 P43908699 WALKER JH HEIDI 4558 4003 625D (DBP)

ACT. BW 79
 ADJ. WW 1084
 ADJ. YW 1084
 ADJ. REA 12.63
 ADJ. MARB 2.97

CEU	BW	WW	YW	DMI	SC	SCF	MILK	M&G	CEM	MCW											
3.2	51%	2.9	54%	74	3%	107	11%	0.4	78%	1.0	48%	22.5	9%	27	53%	63	17%	4.7	15%	103	79%
UDDR	TEAT	CW	MARB	REA	FAT	BMI	BII	CHB													
1.40	8%	1.40	12%	92	4%	0.42	5%	0.66	14%	0.083	98%	483	5%	597	3%	165	4%				

- This sire group of SCHU-LAR Significant 43H sons are constantly marked and are of high quality. Love the profile 3114 gives us as well as muscle shape and body shape. Well balanced bull that has tons of good.
- Ranks in the top 10% for 8 traits

35 WALKER SIGNIFICANT 15D 3118L (DLF,HYF,IEF,MSUDF)

BULL /W P44550897 | Calved: 10/2/23 | Tattoo: LE 3118 | Polled
 SCHU-LAR ASSET 36F (CHB)(DLF,HYF,IEF,MSUDF)
SCHU-LAR SIGNIFICANT 43H (CHB)(DLF,HYF,IEF,MSUDF,MDF)
 P44159459 SCHU-LAR 2E SOCIETY 27X 10Y (DLF,HYF,IEF,MSUDF,MDF)



C&L CT FEDERAL 485T 6Y (SOD)(DLF,HYF,IEF)
LJR MSU WILLOW 15D (DLF,HYF,IEF,MSUDF)
 P43704645 LJR SILVIA 204U (HYP)

ACT. BW 71
 ADJ. WW 1002
 ADJ. YW 1002
 ADJ. REA 14.78
 ADJ. MARB 1.06

CEU	BW	WW	YW	DMI	SC	SCF	MILK	M&G	CEM	MCW											
2.7	55%	1.4	22%	69	8%	105	14%	0.2	50%	0.7	79%	16.3	56%	16	94%	51	71%	3.5	26%	114	92%
UDDR	TEAT	CW	MARB	REA	FAT	BMI	BII	CHB													
1.40	8%	1.40	12%	83	13%	0.22	22%	0.59	22%	0.033	63%	379	40%	470	32%	146	12%				

- **Homozygous Polled**
- Big boned, big footed Significant son that has impressive length of body and mass. This goggle-eyed herd sire stems back to a highly maternal high quality Federal daughter. Keep all the daughters out of 3118 as they will be the top-notch kind.





WLKR LF COSMOS 338G 3102L

36

BULL

WLKR LF COSMOS 338G 3102L (DLF,HYF,IEF,MSUDF)

/W 44550899 | Calved: 8/25/23 | Tattoo: LE 3102 | **Horned**
 BIRDWELL VANGUARD 5022 9337 (CHB)(DLF,HYF,IEF,MSUDF,MDF,DBF)
 WHITEHAWK 593F COSMOS 672J ET (CHB)(DLF,HYF,IEF,MSUDF,MDF)
 P44218460 WHR 845C 4010 BEEFMAID 593F ET (DLF,HYF,IEF,MSUDF)
 INNISFAIL WHR X651/723 4013 ET (CHB)(DLF,HYF,IEF,MSUDF,MDF)
 WHR 4013 479E BEEFMAID 338G (DLF,HYF,IEF,MSUDF,MDF)
 P44068422 WHR 595B 711B BEEFMAID 479E (DLF,HYF,IEF)



ACT. BW
74
ADJ. WW
ADJ. YW
1154
ADJ. REA
15.22
ADJ. MARB
3.12

CED	BW	WW	YW	DMI	SC	SCF	MILK	M&G	CEM	MCW											
6.0	26%	1.1	17%	65	16%	104	15%	0.3	64%	1.3	19%	19.9	23%	33	16%	65	12%	5.8	9%	86	43%
UDDR	TEAT	CW	MARB	REA	FAT	BMI	CHB														
1.30	25%	1.10	81%	77	27%	0.53	2%	0.77	7%	0.043	77%	444	12%	554	8%	169	3%				

- **Recommended for use on heifers**
- High performing, big growth horned bull sired by Cosmos that originated in the White Hawk program in Georgia. This dark red bull has the frame and length to sire a heavy set of calves. Money making time here.
- Ranks in the top 10% for 5 traits.

37

BULL

WLKR GOLD RUSH 7100E 3107L ET (DLF,HYF,IEF,MSUDF)

/W P44561809 | Calved: 9/17/23 | Tattoo: LE 3107 | **Polled**
 NJW 79Z Z311 ENDURE 173D ET (SOD)(CHB)(DLF,HYF,IEF,MSUDF,MDF,DBF)
 CMF 1720 GOLD RUSH 569G ET (CHB)(DLF,HYF,IEF,MSUDF,MDF,DBF)
 P44108010 L III TFL C609 VICTORIA 1720 (DLF,HYF,IEF,MSUDF)
 INNISFAIL WHR X651/723 4013 ET (CHB)(DLF,HYF,IEF,MSUDF,MDF)
 WALKER TORI 4013 B101 7100E ET (DLF,HYF,IEF)
 P43906469 WALKER TORI X51 911 B101 ET (DLF,HYF,IEF,MSUDF)



ACT. BW
63
ADJ. WW
ADJ. YW
789
ADJ. REA
11.43
ADJ. MARB
2.38

CED	BW	WW	YW	DMI	SC	SCF	MILK	M&G	CEM	MCW											
7.8	15%	1.1	17%	63	20%	103	18%	0.6	93%	1.2	27%	26.1	2%	26	58%	57	40%	0.5	63%	87	46%
UDDR	TEAT	CW	MARB	REA	FAT	BMI	CHB														
1.30	25%	1.40	12%	83	13%	0.54	2%	0.63	18%	0.053	86%	526	2%	640	1%	168	3%				

- **Homozygous Polled**
- **Recommended for use on heifers**
- Sleep all night calving ease bull that exhibits worlds of growth and added carcass value. Sired by CMF 1720 Gold Rush 569G ET, one of the most heavily used herd sires across the country.
- Ranks in the top 10% for 5 traits.



CMF 1720 GOLD RUSH 569G ET - Sire of Lot 37



WLKR LF BITCOIN 84E 728 229K



6MC HOMEGROWN LADY 728 — Dam of Lot 38

38

BULL

WLKR LF BITCOIN 84E 728 229K (DLF,HYF,IEF,MSUDF,MDF)

W P44350845 | Calved: 1/21/22 | Tattoo: LE 229 | Polled
 TH 90U 17Y LAMBEAU 148B (DLF,HYF,IEF)
 S16 782B HIGHLAND 84E (DLF,HYF,IEF,MSUDF,MDF)
 P43779333 RANGELINE 511X MOLASSES782BET (DLF,HYF,IEF,MSUDF)



ILR HOMEGROWN 458B ET (DLF,HYF,IEF,MSUDF,MDF)
 6MC HOMEGROWN LADY 728 (DLF,HYF,IEF,MSUDF,MDF)
 P43812351 /S LADY DOMINO 2013Z (IEP)

ACT. BW 68
 ADJ. WW 679
 ADJ. YW 1089
 ADJ. REA 12.16
 ADJ. MARB 3.32

CE	D	BW	WW	YW	DMI	SC	SCF	MILK	M&G	CEM	MCW										
9.0	10%	0.1	8%	48	83%	77	83%	0.2	42%	1.1	37%	20.0	23%	27	49%	51	69%	3.2	29%	58	5%
UDD	R	TEAT	CW	MARB	REA	FAT	BMI	BII	CHB												
1.50	2%	1.60	1%	72	46%	0.33	9%	0.55	28%	0.033	63%	418	21%	498	21%	140	16%				

- **Recommended for use on heifers**
- We have used Bitcoin the past few breeding seasons and it's time to offer him. Bitcoin is an Outcross for many breeders and was a big part of why we used him. Super dark red bull that is sound from the ground up in a superior calving ease package. This is a bull that is ready for heavy use and will cover a lot of cows. Tons of added maternal and carcass genetics to boot.
- Ranks in the top 10% for 6 traits.
- Owned with: Crown L Herefords, Kentucky

39

BULL

DCF 33D MANUEL L49 ET (DLF,HYF,IEF,MSUDF,MDF,DBF)

DRY CREEK 44533447 | Calved: 5/13/23 | Tattoo: BE L49 | Horned
 H FHF ADVANCE 628 ET (CHB)(DLF,HYF,IEF,MSUDF,MDF,DBF)
 ECR 628 IVYS ADVANCE 8923 ET (DLF,HYF,IEF,MDF,DBF)
 43965019 ECR MISS SENSATION 4406 ET (DLF,HYF,IEF,MSUDF,DBP)



CHEZ AA NEXT LEVEL ET (CHB)(DLF,HYF,IEF,MSUDF,MDF,DBF)
 HAPP DARLA 33D ET (DLF,HYF,IEF,MSUDF)
 P43730490 JSF 12N LADY VAL 9T (DLF,HYF,IEF)

ACT. BW 76
 ADJ. WW
 ADJ. YW
 ADJ. REA
 ADJ. MARB

CE	D	BW	WW	YW	DMI	SC	SCF	MILK	M&G	CEM	MCW										
1.3	68%	1.9	31%	47	86%	78	80%	0.1	35%	1.0	48%	10.5	96%	22	80%	45	86%	-1.5	83%	65	10%
UDD	R	TEAT	CW	MARB	REA	FAT	BMI	BII	CHB												
1.20	54%	1.20	56%	71	48%	0.06	68%	0.70	11%	0.063	92%	265	96%	320	97%	112	63%				

- L49 will make you stop in your tracks. A super eye-appealing horned bull sired by the popular AI Sire ECR Sancho. Backed by the ever-popular Darla 33D donor. This Sancho son is stout footed and moves like a cat. Ready for heavy use.



DCF 33D MANUEL L49 ET



HAPP DARLA 33D ET — Dam of Lot 39



40

WLKR JH HERITAGE 722 63G 2229 {DLF,HYF,IEF,MSUDF,MDF}

BULL

/W P44355221 | Calved: 2/5/22 | Tattoo: LE 2229 | Polled
 EFBEF TFL U208 TESTED X651 ET (SOD){CHB}{DLF,HYF,IEF,MSUDF}

F FINAL TEST 722 {CHB}{DLF,HYF,IEF,MSUDF,MDF,DBF}
 P43782451 F MS YORK 567 (DOD){DLF,HYF,IEF,MSUDF}



NJW 79Z 22Z HEAVY DUTY 72C ET {DLF,HYF,IEF,MSUDF,MDF}

LB 78B 72C MISS 63G {DLF,HYF,IEF,MSUDF}
 P44013863 LB 26Y 15X MISS 78B (DOD){HYP}

ACT. BW 74
 ADJ. WW 824
 ADJ. YW 1100
 ADJ. REA 13.37
 ADJ. MARB 3.45

CED	BW	WW	YW	DMI	SC	SCF	MILK	M&G	CEM	MCW											
8.0	15%	0.3	9%	64	18%	92	44%	0.3	55%	0.6	86%	32.1	1%	37	5%	69	5%	4.7	15%	72	16%
UDDR	TEAT	CW	MARB	REA	FAT	BMI	BII	CHB													
1.40	8%	1.50	4%	65	73%	0.37	7%	0.37	65%	-0.017	3%	595	1%	702	1%	136	20%				

- **Homozygous Polled**
- **Recommended for use on heifers**
- A direct son of Final Test that has proven he can breed a lot of cows. This bull has been used. Study the added calving ease, maternal and carcass EPDs. Ready for heavy use. Keep all the daughters!
- Ranks in the top 10% for 10 traits.
- Owned with Brad Davis, Tennessee

41

WLKR JH ESSENTIAL 43H 81H 2264 {DLF,HYF,IEF,MSUDF}

BULL

/W P44451590 | Calved: 11/20/22 | Tattoo: LE 2264 | Polled
 SCHU-LAR ASSET 36F {CHB}{DLF,HYF,IEF,MSUDF}

SCHU-LAR SIGNIFICANT 43H {CHB}{DLF,HYF,IEF,MSUDF,MDF}
 P44159459 SCHU-LAR 2E SOCIETY 27X 10Y {DLF,HYF,IEF,MSUDF,MDF}



F FINAL TEST 722 {CHB}{DLF,HYF,IEF,MSUDF,MDF,DBF}

MOHICAN MS VICKI M81H {DLF,HYF,IEF,MSUDF,MDF,DBF}
 P44173342 FPH MS VICKI 755T D92

ACT. BW 74
 ADJ. WW 873
 ADJ. YW
 ADJ. REA
 ADJ. MARB

CED	BW	WW	YW	DMI	SC	SCF	MILK	M&G	CEM	MCW											
4.8	36%	2.8	51%	72	4%	113	6%	0.4	77%	1.2	27%	22.3	10%	33	17%	69	6%	-3.9	96%	71	15%
UDDR	TEAT	CW	MARB	REA	FAT	BMI	BII	CHB													
1.50	2%	1.60	1%	93	4%	0.22	22%	0.85	4%	0.063	92%	473	6%	571	6%	156	7%				

- **Homozygous Polled**
- **Recommended for use on heifers**
- A 2-year-old Significant son backed by a highly maternal dam M81H. Big growth, big maternal bull that will add pounds to your next calf crop.
- Ranks in the top 10% for 11 traits.



MOHICAN MS VICKI M81H — Dam of Lot 41

COMMERCIAL FEMALES

TIDMORE FARMS | FYFFE, AL | Ryan Tidmore 256-899-5360

12 Black Baldy and Red Baldy Fall Bred Heifers

All sired by WLKR FAF Gauge Y02 754 9205
Bred to Low-Birth-Weight Troxtel Angus Bull

3 Red Baldy 2-year-old 3n1 Fall Pairs

Cows and Calves sired by /W Bulls
Calves born between 8/27/24 and 10/19/2024
Cows bred back to /W Hereford bull

GILLIAM FARMS | COLUMBIA, TN | Wesley Gilliam 931-446-7582

5 Black Baldy Spring Open Heifers

Born March - April 2024
Sell Open

TMC LAND & CATTLE CO. | WARTRACE, TN | Thomas Cooper 931-703-7781

10 Black Baldy Spring Open Heifers

Born March, April, May 2024
Sell Open



WALKER HEREFORDS

ERIC WALKER FAMILY ■ P.O. BOX 146 ■ MORRISON, TN 37357

ERIC WALKER 931-607-6356 ■ CODY WALKER 931-607-0337

CONNOR JAGGERS 270-218-1820

WPHF@BENLOMAND.NET ■ WALKERHEREFORDFARM.COM

WALKER HEREFORDS PRESENTS

Foundations for the Future '25

FRIDAY, SEPTEMBER 5, 2024

Dinner • 5:30 PM (Central Time) • Frozen Genetics Sale • 7 PM

SATURDAY, SEPTEMBER 6, 2025

Live Cattle Sale • 11 AM (Central Time)

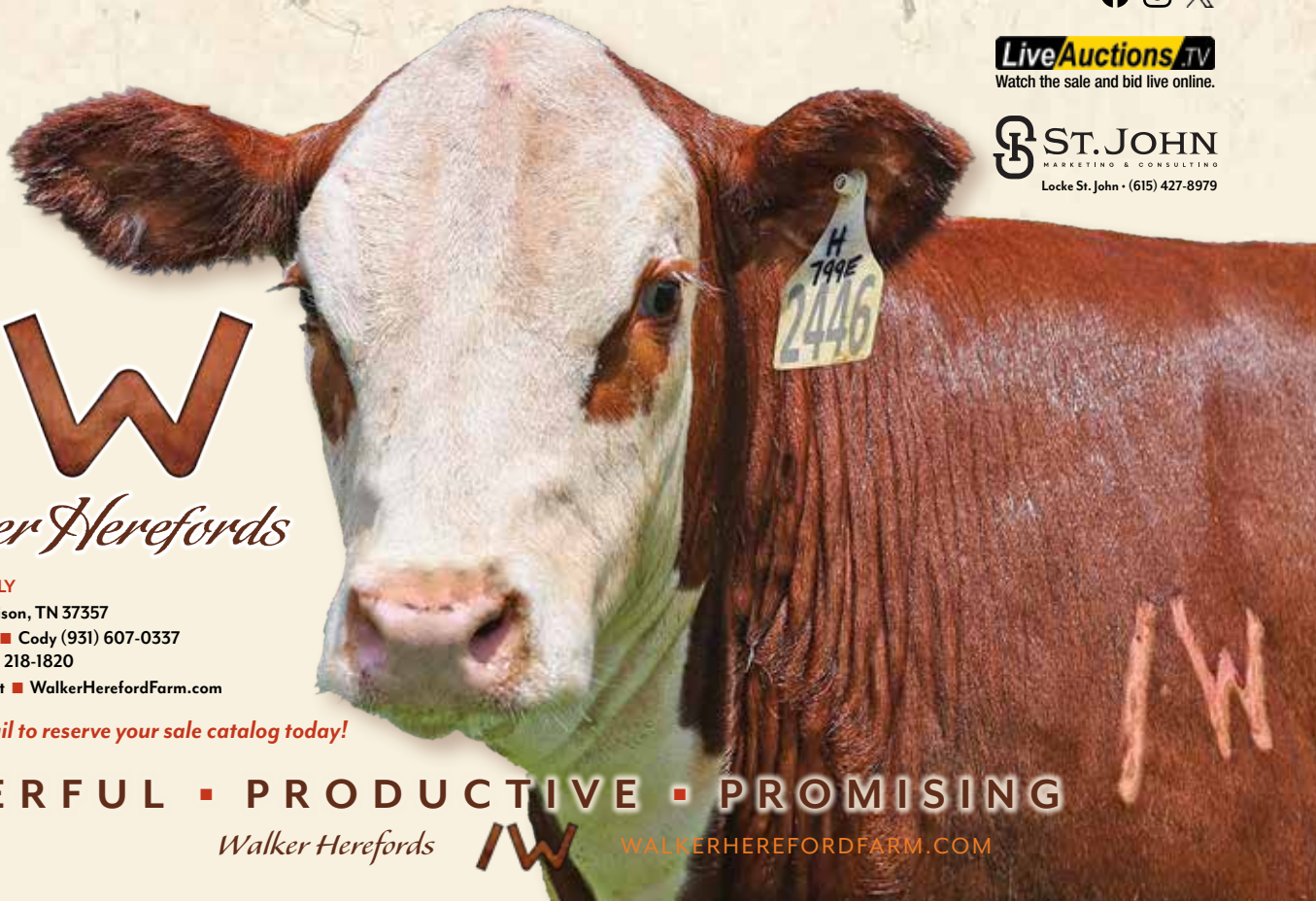
All events are held at the Walker Hereford Sale Facility
Morrison, Tennessee

Selling 100 Lots



LiveAuctions.TV
Watch the sale and bid live online.

ST. JOHN
MARKETING & CONSULTING
Locke St. John • (615) 427-8979



IW

Walker Herefords

ERIC WALKER FAMILY

P.O. Box 146 ■ Morrison, TN 37357

Eric (931) 607-6356 ■ Cody (931) 607-0337

Conner Jagers (270) 218-1820

wphf@benlomag.net ■ WalkerHerefordFarm.com

Call, text or email to reserve your sale catalog today!

POWERFUL ■ PRODUCTIVE ■ PROMISING



GUEST CONSIGNORS

JH

Jernigan Farm

Columbia, TN
Mike, Debbie, Brittany, Blake,
Grant, Natalie, William,
Callan and Christian
615-418-2218

DRY CREEK Farms

Dry Creek Farms

Pell City, AL
Carter St. John
205-705-4041
Locke St. John
615-427-8979



Blazer Farms

Franklin, TN
Mike McFarlin
615-293-4044

TERMS AND CONDITIONS

1. Terms are check, credit card or cash. Each animal to be sold to the highest bidder. The auctioneer shall settle any dispute as to bids.
2. All cattle are to be paid for by the purchasers during or immediately after the sale.
3. Each animal will be at purchaser's risk immediately after the animal is sold. They will be fed and cared for free of charge for a reasonable length of time after the sale, but at the purchaser's risk (buyer can have them insured against this risk at a nominal rate) and will be turned over to the buyer or shipped as he may direct.
4. Guarantee: All bulls sold through the sale are guaranteed to be satisfactory breeders for the first breeding season following the sale. All bulls selling have been semen evaluated, scrotal measured and given a breeding soundness exam. If there is a reproductive problem, contact us immediately and a replacement bull will be provided if available or a credit equal to the animal's purchase price minus salvage value will be issued for the replacement of one animal. This guarantee does not cover illness or death to the animal. There will be livestock mortality insurance available on sale day at the settlement table at the buyer's expense.
5. Health: Cattle may be shipped into any state.
6. Announcements at the sale ring by the owners or the auctioneer concerning the cattle will take precedence over statements in the sale catalog.
7. All persons who attend the sale do so at their own risk and the owners or management assume no liability, legal or otherwise, for any accidents that may occur.
8. EPDs listed in the catalog were current as of Dec. 6, 2024. Visit [HerefordsOnDemand.com](https://www.herefordsondemand.com) to view and search Live EPDs.

****We gladly accept American Express, Discover, Mastercard and Visa.**

Scrotal Circumference Measurements will be included on the Sale Supplement sheet.



TENNESSEE AGRICULTURE ENHANCEMENT PROGRAM

All bulls that qualify for the TAEF maximum cost share reimbursement will be marked on the sale day supplement.

[WALKERHEREFORDFARM.COM](https://www.walkerherefordfarm.com)



Walker Herefords



WALKER HEREFORDS

Eric Walker & Family
P.O. Box 146
Morrison, TN 37357

Foundations for the Future

BULL SALE

SATURDAY, FEB. 1, 2025 | 12 NOON (CST)

Walker Herefords Sale Facility • Morrison, Tennessee



BLZ VALIDATED F101 L064ET



DCF 123 MR DILL 65L ET



WLKR NATIONWIDE 950G 3512 ET



WLKR JH KEY WEST 7233 3255 ET



TENNESSEE AGRICULTURE ENHANCEMENT PROGRAM All bulls that qualify for the TAEP maximum cost share reimbursement will be marked on the sale day supplement.