

# NATIONAL WESTERN

*Hereford Sale*

1.17.25

HEREFORDS

*in the yards*



# IGNITE YOUR LIVESTOCK OPERATION

## Our Services

- ✓ Livestock Photography
- ✓ Videography
- ✓ Website Design
- ✓ Graphic and Print Design
- ✓ Social Media Management

## Why Choose Us?

We want to understand your operation inside and out, ensuring that our marketing efforts are tailor-made to suit your unique needs.

## About Our Company

Here at Focus, we believe in the immense strength that emerges when we work together as a cohesive team. We firmly believe that the best marketing campaigns are born when the agency and the customer become an unstoppable force united by a common goal.

Contact Us

 785-213-5435

 [focusmarketinggroup.net](http://focusmarketinggroup.net)

Dear Hereford Breeders and Enthusiasts,

Welcome to the National Western Hereford Sale "Herefords in the Yards." One of the most talked about subjects over the past three years is the excitement and optimism of the new Yards at the National Western. As the numbers of Hereford Yard cattle surges for the third straight year, the very best the Hereford breed has to offer will be at the National Western Stock Show.

For generations, the Yards at the National Western were known at THE place to merchandise and promote the best Hereford genetics found anywhere. This year, breeders from across the United States & Canada have come together to offer the most superior genetics in the breed for this once-a-year event! With over seventy head featured, there is not just one single lot, but each and every lot will appeal to multitudes of Hereford breeders looking to move their programs to new heights.

The bulls and females presented in this catalog represent some of the finest genetics available today in the entire breed. They are type of genetics that can make an immediate impact in a lone generation in any program coast to coast. In addition to the live lots, we are offering some "pick of the herds" that represent the type of elite genetics that aren't available anywhere at any time. The revenue potential that exists in this sale offering is second to none, and the impact these genetics make in the breed will be felt for generations.

We wish to invite you to the 2025 National Western Hereford Sale. If you are unable to make it to Denver, the sale will be broadcast on CCI.Live. If you have any questions about the sale offering, please contact myself, the sale consultants, or any member of the sale staff.

Welcome to the National Western ... welcome to the Yards.

Justin B. Stout

# NATIONAL WESTERN *Hereford Sale*



## Friday, January 17, 2025

### National Western Livestock Show

### Wagner Equipment Sale Arena

### 2:30 p.m. Sale Preview

(or immediately following Hereford Pen Show)

### 4:00 p.m. Sale

#### Sale Sponsor:

Colorado Hereford Association

#### Sale Manager:

Justin B. Stout Auction Service, LLC  
15508 Woodward St.  
Overland Park, KS 66223  
913-645-5136  
jbs5356@hotmail.com

#### Auctioneer:

Justin B. Stout ..... 913-645-5136

#### Sale Consultants:

Matt Caldwell ..... 913-755-1105

#### Sale Staff:

Kevin Murnin, *Hereford World* ..... 406-853-4638  
Aaron Freidt, *Hereford World* ..... 701-590-9597  
Emilee Holt, *Hereford World* ..... 208-965-3130  
Guy Peverley, *The Stock Exchange* ..... 785-456-4390  
Logan Ipsen, *Western Livestock Journal* ..... 916-947-2392  
Alan Sears, *Western Ag Reporter* ..... 970-396-7521

#### Hereford Hotel Headquarters:

Renaissance Denver Central Park ..... 303-399-7500



**Bid Live:** Can't make the sale? Watch it live and bid in real time on CCI.LIVE

**Terms of Sale:** The terms of the sale are cash or check payable at the close of the sale and prior to load out unless previous arrangements have been made with the owner or sale manager. Animals will be sold to the highest bidder with the auctioneer settling any disputes. Announcements at the sale by the owner, sale manager or auctioneer will take precedence over statements in the catalog. Each animal becomes the buyer's risk as soon as sold but will be cared for by the

seller until load out or for a reasonable period of time. All transactions will be in U.S. dollars.

**Guarantee:** All cattle will sell under the suggested terms and conditions of the American Hereford Association.

**Health:** Health of the consignments is excellent. Individual health papers will be furnished for shipment in the United States. All animals become the property of the purchaser at the time of sale, and we strongly recommend that you insure your purchases. Bulls over one year of age have been fertility tested and will guarantee semen to freeze. Bulls have been trich tested. All sale cattle are P.I. tested negative.

**Insurance:** Sheila Jensen 785-262-1116

**Delivery:** Delivery costs and arrangements of sale animals are the responsibility of the purchaser. Sale personnel, consignors, exhibitors, and various reputable trucking firms will be on hand to assist with transportation arrangements.

**Performance information:** All EPDs are current according to the official AHA record as of December 1st, 2024, and are subject to change.

**Payment:** Payment for each lot in the 2025 Herefords in the Yards Sale is to be immediately after the sale. The buyers who choose to be billed need to make payment as soon as possible after the sale. Interest will be accrued on unpaid balances starting on March 1st, 2025, at the rate of 1.5% per month, 18% annually.

**Note:** All persons who attend the sale do so at their own risk. Neither the National Western Livestock Show, the owner(s) nor the sale manager assume liability, legal or otherwise, for any accidents which occur.

**Online marketing sponsored by:**





# 1 | TOPP HEREFORDS CHOICE OF THE COWHERD

A lot that has become a staple to lead off this sale since it began, the choice of bred heifers from Topp Herefords has been one of the most sought-after offerings of any auction ... as it should be! This year Ryan and Prairie have decided to throw a curveball and change things around a little bit. No longer are you buying a pick of bred heifers, but you're buying the opportunity to select ANY cow on the ranch!

That's right, you're the buying the opportunity to make the trek to Grace City, open any gate Ryan has and pick your choice of the maternal battery that is responsible for one of the top performing bull sales, of any breed, anywhere in North America. Everything from the newest bred heifers, to proven herd sire producers is on the table. Topp's maternal battery is bred for and focus on one primary goal ... raising commercial bulls.

They believe that a true Seedstock operation's commitment is to develop genetics that ultimately drive the meat industry forward. Their success is measured by their contribution to the sustainability of our commercial cow-calf customers.

The cow herd is built on a foundation of four core values: udder quality, soundness, fertility, and pounds. The structure by which they analyze these traits may be called old-fashioned by some. However, the process is real and exceptionally ruthless.

Udder quality is determined at calving time by a simple 1-2 grading system. A 1 is great and a 2 is a cull. Soundness is determined during spring vaccination season. A female with a cracked foot, bad joints, poor disposition or hard-doing is sorted off and not even bred. Fertility sorts itself out quickly with a 45-day breeding season. Finally, pounds weaned. If they don't bring in a heavy calf, there is a pretty good chance she won't be calving there next Spring. To round out the selection process, Ryan and Prairie have been DNA testing since 2013 to provide parentage, identify genetic defect status and increase the accuracy of EPDs.

Buyer will have the opportunity to select from over 1100 bred females, both heifers and cows. The majority of these are AI bred. All will be calved out to further enhance the selection process. Selection is to be determined between May 1 and May 15, 2025.



Topp Herefords  
Ryan and Prairie Topp  
1157 83rd Ave. N.E.  
Grace City, ND 58445-9240  
Office 701-674-3152 • Ryan cell 701-652-5701  
info@toppherefords.com



*SULL DIANA 5355C ET*



*C 8257 VALERIE 1030 ET*



*C 1311 GENESIS GAL 2138 ET*



*C 8086 LADY SANCHO 1066 ET*

## 2 | COLYER HEREFORDS PICK OF FALL 2024 CALF CROP

Without a doubt Colyer Herefords is one of the long standing, most successful programs in the nation. When you look at the number of walking herd sires combined with the popular AI sires, the influence of the Colyer program is second to none. With the growth of their Fall Female Sale, the Colyer female has become one of the most coveted assets in the entire breed.

In what has become tradition on the grand stage in Denver, Colyer Herefords is offering Choice of Fall 2024 Calf Crop. There are a total of 118 calves to choose from with 43 of them ET progeny out of the leading donors walking in Bruneau, including:

- C 88X Notice Me 1311 ET - dam of such greats as Arlo, Double Your Miles, Special Edition, etc.
- SULL Diana 5355C ET - past National Champion & dam of several high sellers
- C 1311 Genesis Gal 2138 ET - \$195,000 full sister to Arlo & Denali
- C Bar1 Bailees Double Miles ET - past National Champion & \$99,000 top seller
- C 8257 Valerie 1030 ET - young Validated donor with an exceptional carcass profile
- C 4038 Belle Lass 8086 ET - dam of Sancho 1084, 2022 NWSS Grand Champion
- KLD RW Mercy Me D83 ET - full sister to Marksman
- C 8086 Lady Sancho 1066 ET - full sister to Sancho 1084

The sires that are represented in this pick are some of the greatest bulls in the breed today:

- C ARLO 2135 ET
- C CJC 4013 4264 0195 ET
- C DENALI HD 2105 ET
- CHURCHILL W4 SHERMAN 2157K ET
- BR GKB WINCHESTER 1314
- C CUDA BELLE 2111
- LOEWEN GENESIS G16 ET
- C BARRACUDA 0114 ET
- C GKB GUARDIAN 1015 ET
- GREEN JCS MAKERS MARK 229G ET
- EKS DWK B26 FINAL CHAPTER J10

Buyer will receive listing of GE-EPDs on the entire calf crop to assist in selection.



*C ARLO 2135 ET*



*C CUDA BELLE 2111*



31058 Colyer Rd., Bruneau, ID 83604  
Guy 208-599-0340 - Kyle 208-250-3924  
[www.hereford.com](http://www.hereford.com)



**3 | COYOTE RIDGE RANCH  
PICK OF 2025 HEIFER CALVES**

Coyote Ridge Ranch has evolved into one of the preeminent programs in the Hereford breed. Look no further than their recent results right here at the National Western where they've been selected the Grand Champion Pen of Bulls 8 times, most recently in 2020, 2022 and 2024.

CRR is a three-generation family operation located on the high plains of Colorado in the shadow of the Rocky Mountains. Hampton and his family run a real-world western range program with a proven track record of calving ease, maternal efficiency and superior growth backed by 40 years of actual performance records and dam production records. A program truly built for today's beef industry with performance documented over 15 years of retained ownership and feedlot data on CRR steers. The cowherd consists of dependable problem free cows that work for a living.

This is a lifetime opportunity to step in and select your favorite heifer on the place born in 2025. CRR will calve over 170 pairs beginning in February. In addition to that outstanding lineup of pasture herd sires CRR is known for, you'll have to opportunity to select progeny sired by some of the leading AI bulls today:

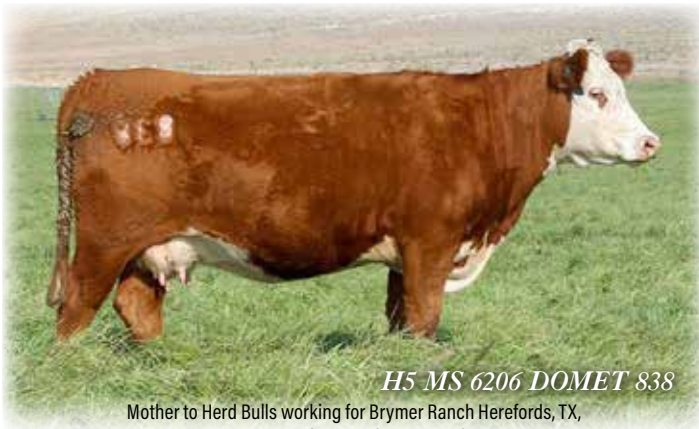
- KJ 623K RANCHER 489M ET
- ASM 405B RED MAN 325L ET
- CRR 156J WIND RIVER 347 - Lead bull in 2024 NWSS Champion Pen of Three
- /S LONG HAUL 11443
- CRR 66589 BALANCE 107
- CRR 0016 PUNCH 338 ET
- CRR 0016 SARATOGA 380 ET
- NJW 141C 9139 LOYAL 35K



Coyote Ridge Ranch  
18300 Co. Rd. 43  
LaSalle, CO 80645  
Jane Evans Cornelius  
cell 970-371-0500  
Hampton and Kay  
cell 970-396-2935

[www.coyoteridgeherefords.com](http://www.coyoteridgeherefords.com)

Selection must be made by September 1st, 2025.



*H5 MS 6206 DOMET 838*

Mother to Herd Bulls working for Brymer Ranch Herefords, TX, Cannon Ranch, NV and Case Ranch, TX



*H5 MS 6206 DOMET 845*

Mother to Herd Bull sold to Case Ranch, TX and Harrell Hereford Ranch, OR  
Mother to Herd Sire in use at Davis Herefords, OR



*H5 MS 10Y HOMETOWN 6227 ET*



*H5 MS 2185 DOMET 6334*

Mother to Herd Bull sold to Indian Mound Ranch, TX



*H5 MS 0945 DOMET 7115*

Mother to Herd Bulls selling to Freidt Herefords, ND and Fawcett's Elm Creek Ranch, SD



*SR 5139R MISS MONTANA 6171 ET*

Mother to Herd Bull working for Baumgartner Herefords, ND

## 4 | HARRELL HEREFORD RANCH PICK OF 2025 HEIFER CALVES

Regarded by many as the Northwest's #1 Maternal Cow Herd, this is a golden opportunity to venture through the gate at Harrell Hereford Ranch and select your pick of the 2025 Heifer Calves! This has never before been offered! Aside from selling a few registered heifers in their annual sale, the top end of the Harrell cowherd has been off limits.

Bred & raised in the high country of Eastern Oregon, The Harrell's have taken pride in building a cowherd that is second to none, one that is maternally focused, trait-balanced and backed by 53 years of Whole Herd TPR, with 30+ years of ultrasound data and an entire cowherd that has been genomically tested since its inception. The H5 Total Beef Branded program has the style and look of the front-pasture kind with emphasis on carcass merit and balanced trait selection. Average EPDs for 170 Head of 2024 Heifer Calves is CED 3.7, BW 2.6, WN 63, YL 102, MILK 34, REA .50, IMF .35, CHB \$148.

The Harrell program has taken all of the guesswork out of this for you. This no-nonsense selection program along with years of Carcass Data collection will provide you with a complete open book and honest evaluation of our strongest maternal lines that allows you access to roughly 170 horned and polled heifers to choose from. This is an opportunity to select a heifer that you can build a cowherd around and one that will make a huge impact for generations to come.



42590 Salmon Creek Rd.  
Baker City, OR 97814  
harrellherefordranch.com

Bob Harrell Jr. 541-403-2210  
Don Schafer 541-403-0008  
Ranch 541-523-4402

From Northcentral South Dakota, Cane Creek is bringing a set of bulls backed by proven donors and sired by the newest sires anywhere in the breed today. First up is the Sherman son out of the immortal "Mother of Herd Bulls", 45C. We don't have enough space in this book to list out all the accomplishments and high-revenue progeny that this tremendous cow has put into the marketplace. This sale features the first opportunity to acquire sons of the great Sherman bull, and 456M is quite the outlier. Of the 403 recorded Sherman progeny on record, 456M is the #2 for WW, #3 for REA and #9 for both CHB and YW. It's difficult to put into words the potential impact this great young herd sire is poised to make.

Second up is another Sherman son, this time out of an Upstream donor that The Creek acquired. This young cow has made a huge impact for Casey and the crew. 484M offers a little more calving ease package yet still in the top of the breed for growth with elite carcass numbers.

Rounding out the bull pen features a son of the 2023 National Champion bull Slinger, and out of the Darla 33D cow that has made such a huge impact in the Dry Creek Farms herd. Progeny from this great female have been highly sought after over the past couple years and this young prospect sired by the National Champion will make an excellent impact. Set right in on this great pen of bulls as they're designed to move the needle in almost any situation.



CCCC SHERMAN 45C 456M ET

**5A** | **CCCC SHERMAN 45C 456M ET** {DLF,HYF,IEF,MSUDF,MDF,DBF}  
44589720 | Calved: 3/9/24 | Tattoo: BE 456M

KCF BENNETT RESOLVE G595 {CHB} {DLF,HYF,IEF,MSUDF,MDF,DBC}  
**CHURCHILL W4 SHERMAN 2157K ET** {DLF,HYF,IEF,MSUDF,MDF,DBF}  
 P44378036 CHURCHILL LADY 079H ET {DLF,HYF,IEF,MSUDF,MDF,DBF}

JDH VICTOR 719T 33Z ET {SOD}{CHB}{DLF,HYF,IEF,MSUDF,DBF}  
**JDH AH MS 34X VICTOR 33Z45C ET** {DLF,HYF,IEF,MSUDF}  
 P43615978 AH JDH MS 25L WRANGLER 34X ET {OOD}{DLF,HYF,IEF}

CE	BW	WW	YW	DMI	SC	SCF	MM	M&G	MCE
-2.1	4.7	80	123	0.4	1.6	20.2	29	69	-5.2
MCW	UDDR	TEAT	CW	FAT	REA	MARB	BMI\$	BIIS	CHB\$
123	1.40	1.30	106	0.023	1.17	0.35	481	591	192

• Homozygous Polled.



CCCC SHERMAN 7401 484M ET

**5B** | **CCCC SHERMAN 7401 484M ET** {DLF,HYF,IEF,MSUDF}  
44590598 | Calved: 3/1/24 | Tattoo: BE 484M

KCF BENNETT RESOLVE G595 {CHB} {DLF,HYF,IEF,MSUDF,MDF,DBC}  
**CHURCHILL W4 SHERMAN 2157K ET** {DLF,HYF,IEF,MSUDF,MDF,DBF}  
 P44378036 CHURCHILL LADY 079H ET {DLF,HYF,IEF,MSUDF,MDF,DBF}

TH 403A 475Z PIONEER 358C ET {SOD}{DLF,HYF,IEF,MSUDF}  
**UPS MISS PIONEER 7401** {DLF,HYF,IEF}  
 P43829232 UPS MISS ADVANCE 0049 {HYF}

CE	BW	WW	YW	DMI	SC	SCF	MM	M&G	MCE
5.1	1.9	59	103	0.6	1.6	16.8	21	50	2.2
MCW	UDDR	TEAT	CW	FAT	REA	MARB	BMI\$	BIIS	CHB\$
95	1.40	1.40	97	0.073	0.96	0.26	394	478	161



CCCC SLING SHOT 33D 485M ET

**5C** | **CCCC SLING SHOT 33D 485M ET** {DLF,HYF,IEF,MSUDF,MDF,DBF}  
44588859 | Calved: 3/3/24 | Tattoo: BE 485M

UPS SENSATION 2296 ET {SOD}{DLF,HYF,IEF,MSUDF,MDF,DBC}  
**LAND SLINGER 2296 1046** {DLF,HYF,IEF,MSUDF,MDF,DBC}  
 P44290168 UPS MISS FINAL TEST 9103 {DLF,HYF,IEF,MSUDF,MDF,DBF}

CHEZ AA NEXT LEVEL ET {CHB}{DLF,HYF,IEF,MSUDF,MDF,DBF}  
**HAPP DARLA 33D ET** {DLF,HYF,IEF,MSUDF}  
 P43730490 JSF 12N LADY VAL 9T {DLF,HYF,IEF}

CE	BW	WW	YW	DMI	SC	SCF	MM	M&G	MCE
-2.0	4.4	58	96	0.4	1.1	15.0	29	58	0.3
MCW	UDDR	TEAT	CW	FAT	REA	MARB	BMI\$	BIIS	CHB\$
90	1.20	1.20	78	0.053	0.77	0.11	343	416	124



JDH AH MS 34X VICTOR 33Z45C ET



HAPP DARLA 33D ET



29238 127th Street  
 Glenham, SD 57631  
 605-848-3338  
[www.canecreekcattleco.com](http://www.canecreekcattleco.com)





JDH AH OLD FASHIONED 25M ET

**6** | **JDH AH OLD FASHIONED 25M ET** {DLF,HYF,IEF,MSUDF}

44555393 | Calved: 1/28/24 | Tattoo: BE 25M

LOEWEN GENESIS G16 ET {CHB}{DLF,HYF,IEF,MDF,DBF}  
**CARLO 2135 ET** {CHB}{DLF,HYF,IEF,MSUDF,MDF,DBF}  
 P44359827 C 88X NOTICE ME 1311 ET {DLF,HYF,IEF,MDF,DBF}



BAR JZ RUMBLE 525X {DLF,HYF,IEF,DBP}  
**AH MS 25L RUMBLER 19Z** {DOD}{DLF,HYF,IEF,MSUDF,DBF}  
 P43292936 AH JDH MS 25L WRANGLER 34X ET {DOD}{DLF,HYF,IEF}

CE	BW	WW	YW	DMI	SC	SCF	MM	M&G	MCE
2.9	4.3	67	105	0.3	1.5	15.7	33	67	2.5
MCW	UDDR	TEAT	CW	FAT	REA	MARB	BMI\$	BIIS	CHBS
87	1.40	1.40	83	-0.017	0.62	0.12	366	449	140



JDH AH OLD FASHIONED 25M ET



27132 SD Hwy. 17  
 Tea, SD 57064  
 Pete Atkins 605-351-9847  
 petea15@gmail.com  
 www.atkinsherefords.com



Jerry and Shelly Delaney Family  
 2071 Co. Rd. 101  
 Lake Benton, MN 56149  
 Jerry Delaney 507-820-0661  
 jdh@delaneyherefords.com  
 www.delaneyherefords.com

For their very first offering in the National Western Hereford Sale, the partnership of Delaney Herefords and Atkins Herefords has quite possibly the very best Herd Sire prospect ever to come out of their program. Old Fashioned is one of the very first sons to sell of the \$165,000 selling CARLO 2135 ET, who is the reigning Grand Champion Polled Bull both here at the National Western as well as Fort Worth. This great young prospect is soft made, sound, deep and stout along with a tremendous hip and top. Beautifully marked, he's red eyed and red to the ground.

On the maternal side, there is no introduction needed. The great 19Z donor continues to leave her mark on this breed as her ability to produce high value cattle at 12 years of age persists. This Dam of Distinction and a maternal sister to the great 45C donor cow, 19Z is the dam of JDH AH LINCOLN 106H ET. She is also the dam of the immortal JDH AH MERCEDES 11E ET that has made a massive impact on the breed, including producing the great Makers Mark. Her calves have an avg. IMF ratio of 111, and her progeny sold through the National Hereford sale average over \$22,000!

Old Fashioned possesses what many preach ... select for balance, not extreme. He will move any program forward with an EPD profile featuring top 10% for growth, excellent TEAT and UDDR, and an enviable set of carcass EPDs. His CHBS ranks him in the top 14% of the breed. Of the 92 Arlo sons already on record, 25M ranks #5 with his combination or better of CE, WW, YW and REA. When you add in the maternal traits of UDDR and TEAT, he is the top Arlo son.

Homozygous Polled.

Featuring a once in a lifetime opportunity to acquire a Herd Sire with this kind of proven maternal production, coupled with this EPD profile wrapped in a near flawless phenotypic package, Atkins & Delaney have brought it! They are retaining a revenue sharing semen interest with full terms to be announced prior to the sale.

When we purchased the past Cattlemen's Congress Champion Bull, Land Slinger 2296 1046, out of this very sale 3 years ago our vision was that he would cross very well with our Genesis and Grady daughters. This cross hasn't missed and we wanted to share the goods. These 3 Sling sons are special in many ways. Elite phenotype with 100% pigment. We are retaining 1/4 interest in each bull.



DCF J20 FREEDOM 40M

**7A** | **DCF J20 FREEDOM 40M** {DLF,HYF,IEF,MSUDF,MDF,DBF}

44580489 | Calved: 3/6/24 | Tattoo: BE 40M  
 UPS SENSATION 2296 ET (SOD) {DLF,HYF,IEF,MSUDF,MDF,DBF}  
**LAND SLINGER 2296 1046** {DLF,HYF,IEF,MSUDF,MDF,DBF}  
 P44290168  
 UPS MISS FINAL TEST 9103 {DLF,HYF,IEF,MSUDF,MDF,DBF}  
 LOEWEN GRADY B42 G15 ET (CHB) {DLF,HYF,IEF,MSUDF,MDF,DBF}  
**LOEWEN MISS GRADY 10C J20 ET** {DLF,HYF,IEF,MSUDF,MDF,DBF}  
 P44386194  
 LPH 028X 16A MORGANN 10C {DLF,HYF,IEF,MSUDF,MDF,DBF}

CE	BW	WW	YW	DMI	SC	SCF	MM	M&G	MCE
1.3	2.6	68	113	0.5	1.2	21.9	35	69	1.4
MCW	UDDR	TEAT	CW	FAT	REA	MARB	BMI\$	BIIS	CHBS
117	1.20	1.30	91	0.063	0.77	0.26	469	566	155

- 40M has been special from an early age. Loaded with look and style with added foot size and body. We feel Freedom will have many friends. What a job Freedom's dam has done as a 2-year-old. This picture perfect uddered Grady daughter did nothing but impress as we expect a lot out of our 2-year-olds. Freedom ranks in the top 10% for 9 traits.
- Homozygous Polled.



DCF 25K MR SLING 4M

**7B** | **DCF 25K MR SLING 4M** {DLF,HYF,IEF,MSUDF,MDF,DBF}

44557212 | Calved: 1/11/24 | Tattoo: BE 4M  
 UPS SENSATION 2296 ET (SOD) {DLF,HYF,IEF,MSUDF,MDF,DBF}  
**LAND SLINGER 2296 1046** {DLF,HYF,IEF,MSUDF,MDF,DBF}  
 P44290168  
 UPS MISS FINAL TEST 9103 {DLF,HYF,IEF,MSUDF,MDF,DBF}  
 LOEWEN GENESIS G16 ET (CHB) {DLF,HYF,IEF,MDF,DBF}  
**DCF 5167 MISS DONNA 25K ET** {DLF,HYF,IEF,MSUDF}  
 P44377097  
 SR 436X DONNA 5167 ET {DLF,HYF,IEF}

CE	BW	WW	YW	DMI	SC	SCF	MM	M&G	MCE
1.7	2.6	71	113	0.5	1.2	23.9	41	76	6.4
MCW	UDDR	TEAT	CW	FAT	REA	MARB	BMI\$	BIIS	CHBS
101	1.30	1.40	98	0.053	0.85	0.13	501	593	152

- This meat wagon is the cowboy's kind. Wide made from the ground up, double red eyed, smooth structured and moves like a cat. This pedigree has a track record of being high quality with loads of longevity and sustainability. We believe big time herd bulls need a good mother. 25K, the dam of 4M, is a drop dead gorgeous 2 year old Genesis daughter that I would take a pasture full of. Stout built and easy doing. 4M ranks in the top 10% of the breed for 11 traits.
- Homozygous Polled.



DCF J12 MR MET 7M

**7C** | **DCF J12 MR MET 7M** {DLF,HYF,IEF,MSUDF,MDF,DBF}

44557213 | Calved: 1/11/24 | Tattoo: BE 7M  
 UPS SENSATION 2296 ET (SOD) {DLF,HYF,IEF,MSUDF,MDF,DBF}  
**LAND SLINGER 2296 1046** {DLF,HYF,IEF,MSUDF,MDF,DBF}  
 P44290168  
 UPS MISS FINAL TEST 9103 {DLF,HYF,IEF,MSUDF,MDF,DBF}  
 LOEWEN GENESIS G16 ET (CHB) {DLF,HYF,IEF,MDF,DBF}  
**LOEWEN HADLEY G16 J12 ET** {DLF,HYF,IEF,MSUDF,MDF,DBF}  
 P44218601  
 SPEARHEAD B413 HADLEY G16 {DLF,HYF,IEF,MSUDF,MDF,DBF}

CE	BW	WW	YW	DMI	SC	SCF	MM	M&G	MCE
3.6	2.4	71	115	0.7	1.5	22.7	37	72	4.7
MCW	UDDR	TEAT	CW	FAT	REA	MARB	BMI\$	BIIS	CHBS
78	1.40	1.30	96	0.093	0.83	0.37	482	590	165

- This long, big middled, stout made Slinger son puts many valuable traits into a unique package. 7M is the natural calf out of the \$120,000 valued Genesis donor, J12. Study the growth and maternal with an elite MCW of 79. 7M ranks in the top 10% for 13 traits.
- Homozygous Polled.

**DRY CREEK**  
*Farms*

7771 Dry Creek Rd.  
 Pell City, AL 35128  
 Locke St. John 615-427-8979  
 Carter St. John 205-705-4041  
 drycreekfarm01@gmail.com  
 www.drycreekfarmscattle.com



CHURCHILL FULL COUNT 4223M ET

**8 | CHURCHILL FULL COUNT 4223M ET**

44607148 | Calved: 3/30/24 | Tattoo: LE 4223

JW X651 TESTED 1857 ET (CHB)(DLF,HVF,IEF,MSUDF,MDF)  
**JW 1857 MERIT 21134** (DLF,HVF,IEF,MSUDF,MDF,DBF)  
 P44212986 JW 33Z VICTORIA 19027 (DLF,HVF,IEF,MSUDF)



EFBEEF BR VALIDATED B413 (SDD)(CHB)(DLF,HVF,IEF,MSUDF,MDF,DBF)  
**BR VALIDATED B413 6035 7098** (DLF,HVF,IEF,MDF,DBF)  
 P43857421 BR BENNETT 4R Y428 21016035 (HYP,DBP)

CE	BW	WW	YW	DMI	SC	SCF	MM	M&G	MCE
7.0	1.3	78	122	0.7	1.5	26.2	33	72	6.1
MCW	UDDR	TEAT	CW	FAT	REA	MARB	BMI\$	BIIS	CHBS
104	1.50	1.50	93	0.033	0.91	0.80	568	711	213



BR VALIDATED B413 6035 7098

Full Count is the most appropriate name to describe this great Herd Sire ... as in each economically relevant trait is maximized ... he's the Full Count!

Let's start with his sire, Merit. Boasting a great set of numbers, Merit progeny have been some of the most sought- after in the breed for the last two years. None of his progeny have come close to eclipsing him ... until now that is.

It took a great cow to do it, but 7098 IS that great cow. With over a million dollars in progeny sales, 7098 has been a true breed changer. Just look at the lineup of sires she's put into the marketplace: Kingdom, Red Thunder, Redbird, Long Run, Wall Street, Bullnanza, among others. Even as a 7 year old 7098 is still the #5 cow in the breed combining REA and MARB, and when you add in CE, WW and YW she is still the top cow in the Hereford breed.

Full Count potentially represents Dale's pinnacle of the great progeny he's produced with 7098. His phenotypic makeup is excellent, he's dark red and short marked and possesses outstanding maternal qualities. On top of that, he is the #1 bull in the entire breed with his combination of CE, WW and MARB. As an added bonus, his combination of BMI\$ and CHBS indexes rank him as the #5 non-parent bull.

The game has changed, and Full Count is poised to be one of the most relevant, revenue generating herd sires to come along in the breed. The marketability of his progeny are limitless, as they will represent what the beef industry demands of Hereford cattle in 2025 and beyond.

GE-EPDs to be updated sale day. Full Count won't be in Denver, but video will be available, and you can stop and see him anytime in Manhattan, MT. Terms also to be announced sale day.



Dale and Nancy Venhuizen  
 1862 Yadon Rd., Manhattan, MT 59741  
 406-580-6421 • Office 406-284-6421  
 churchillcattle@gmail.com  
 www.churchillcattle.com

For the first time, Eric and Galen are bringing and offering pick of their pen of bulls at the National Western. With a mission based on producing thick, stout-made, sound functional cattle that thrive on a minimum of input, the Frenzen family have built a program to be envied ... raising and selling fault free, no-frills Hereford bulls that will thrive in any environment.

These four brothers represent exactly that! Their sire, Rio Bravo, has developed a top reputation for calving ease, pigment, carcass and maternal. His progeny continue to rank among the high sellers in sales across the country, and his daughters have become known for their udder quality.

First up is Maverick James, who is out of a high producing young dam whose posted progeny ratios of 2@107 for WW, 2@103 for YW and 2@101 for REA. The second bull is Major. He's out of a young Small Town Kid female that ratioed 114 on her first calf. He is a slam dunk heifer bull with high stayability and good carcass. Next is Milo, out of a young High Roller dam that offers light BW and excellent balance across his other traits. Rounding out the pen is Macklemore. He's out of a first calf heifer, offers high calving ease, but is carrying the highest Marb EPD in the pen.

Whichever choice is made, these bulls are geared to sire daughters with longevity, and easy fleshing ability that will make great breeding pieces.



KB MAVERICK JAMES M18

**9A** | **KB MAVERICK JAMES M18** {DLF,HYF,IEF,MSUDF,MDF,DBF}  
44562392 | Calved: 2/20/24 | Tattoo: BE M18

SIRE: 43913855 **SR RIO BRAVO 8029 ET** {DLF,HYF,IEF,MSUDF,MDF,DBF}  
DAM: P44201748 **KB HANNAH 0605** {DLF,HYF,IEF,MSUDF,MDF,DBF}

CE	BW	WW	YW	DMI	SC	SCF	MM	M&G	MCE
3.0	2.2	59	90	-0.1	1.3	16.4	26	55	1.8
MCW	UDDR	TEAT	CW	FAT	REA	MARB	BMI\$	BIIS	CHBS
111	1.20	1.30	76	0.043	0.58	0.22	379	461	140



EF MAJOR M01

**9B** | **EF MAJOR M01** {DLF,HYF,IEF,MSUDF,MDF,DBF}  
44562400 | Calved: 2/10/24 | Tattoo: BE M01

SIRE: 43913855 **SR RIO BRAVO 8029 ET** {DLF,HYF,IEF,MSUDF,MDF,DBF}  
DAM: P44301877 **EF LADY QUEEN J37 ET** {DLF,HYF,IEF,MSUDF,MDF}

CE	BW	WW	YW	DMI	SC	SCF	MM	M&G	MCE
10.3	0.6	51	82	0.1	0.8	22.8	21	47	8.3
MCW	UDDR	TEAT	CW	FAT	REA	MARB	BMI\$	BIIS	CHBS
111	1.50	1.60	70	0.053	0.33	0.20	453	532	126



KB MILO M27

**9C** | **KB MILO M27** {DLF,HYF,IEF,MSUDF,MDF,DBF}  
44562404 | Calved: 2/27/24 | Tattoo: BE M27

SIRE: 43913855 **SR RIO BRAVO 8029 ET** {DLF,HYF,IEF,MSUDF,MDF,DBF}  
DAM: 44353069 **KB KAREN K02** {DBP}

CE	BW	WW	YW	DMI	SC	SCF	MM	M&G	MCE
1.7	1.7	50	79	-0.1	1.3	15.5	31	56	6.8
MCW	UDDR	TEAT	CW	FAT	REA	MARB	BMI\$	BIIS	CHBS
118	1.20	1.20	66	0.003	0.40	0.15	352	421	123



EF MACKLEMORE M25

**9D** | **EF MACKLEMORE M25** {DLF,HYF,IEF,MSUDF,MDF,DBF}  
44562389 | Calved: 2/23/24 | Tattoo: BE M25

SIRE: 43913855 **SR RIO BRAVO 8029 ET** {DLF,HYF,IEF,MSUDF,MDF,DBF}  
DAM: P44352913 **EF LADY QUEEN K17** {DLF,HYF,IEF,MSUDF,MDF,DBF}

CE	BW	WW	YW	DMI	SC	SCF	MM	M&G	MCE
4.9	0.7	53	77	0.1	1.8	25.9	30	56	4.4
MCW	UDDR	TEAT	CW	FAT	REA	MARB	BMI\$	BIIS	CHBS
65	1.40	1.40	69	0.063	0.55	0.29	500	588	127



Galen Frenzen Family  
50802 N Edgewood Rd., Fullerton, NE 68638  
Galen 308-550-0237  
Eric 308-550-0238  
ggfrenzen@gmail.com  
frenzencattle.com

Kiera and Kinsley Bremer  
Genna Frenzen 308-550-0924

In his first two years exhibiting pen cattle at the NWSS, Haxton Hoffman has proven himself as one of the top young cattlemen in our industry. In 2023, he exhibited the Reserve Champion Pen of Heifers, and this year he's bringing his first ever Pen of Bulls! The first sons of Sherman to be marketed, these two ET brothers excel in their growth and carcass numbers while moderate for birthweight.

The third brother in the pen is a son of the 2023 FWSS Grand Champion Polled Bull, Thomas County. M123 has a curve bending EPD profile for growth, carcass and stayability with 9 traits in the top 5% of the breed.

What sets this pen of brothers apart is the exceptional maternal coming from the high marbling Cooper cow, 850F! She topped the Cooper sale a few years back when she was purchased by Hoffman, Churchill and Buford Ranch. Since that day, her progeny have been high sellers in both Hoffman's and Churchill's sales. An incredible producer, 850F has posted progeny ratios of 2@110 for WW, 3@101 for YW, 7@103 for REA and 7@101 for IMF. Her marbling combined with the unmatched L1 maternal prowess is what makes these two outcross matings work. The resulting daughters of these three herd sire prospects will be highly sought after, and true revenue generators.

Terms of this choice lot will be announced as we get closer to sale day, but it will be aligned with the Hoffman Ranch Spring Bull Sale Feb. 21, 2025.



KCF BENNETT RESOLVE G595 (CHB) {DLF,HYF,IEF,MSUDF,MDF,DBF}  
**CHURCHILL W4 SHERMAN 2157K ET** {DLF,HYF,IEF,MSUDF,MDF,DBF}  
 P44378036 CHURCHILL LADY 079H ET {DLF,HYF,IEF,MSUDF,MDF,DBF}

CL 1 DOMINO 215Z (SOD) {CHB} {DLF,HYF,IEF,MSUDF,MDF}  
**CL 1 DOMINETTE 850F** {DLF,HYF,IEF}  
 43903431 CL1 DOMINETTE 5123C 1ET {DLF,HYF,IEF,MSUDF}



HOFFMAN SHERMAN M103 ET



HOFFMAN SHERMAN M202 ET



HOFFMAN THOMAS COUNTY M123 ET

**10A | HOFFMAN SHERMAN M103 ET** {DLF,HYF,IEF,MSUDF}  
 44585109 | Calved: 1/10/24 | Tattoo: BE M103

CE	BW	WW	YW	DMI	SC	SCF	MM	M&G	MCE
-0.7	2.8	67	112	0.5	1.5	20.4	29	63	5.3
MCW	UDDR	TEAT	CW	FAT	REA	MARB	BMI\$	BIIS	CHBS
134	1.30	1.40	98	0.083	0.89	0.35	463	563	172

**10B | HOFFMAN SHERMAN M202 ET** {DLF,HYF,IEF,MSUDF}  
 44585111 | Calved: 1/21/24 | Tattoo: BE M202

CE	BW	WW	YW	DMI	SC	SCF	MM	M&G	MCE
-4.2	3.7	69	113	0.5	1.2	17.0	27	61	0.7
MCW	UDDR	TEAT	CW	FAT	REA	MARB	BMI\$	BIIS	CHBS
119	1.20	1.30	94	0.073	0.84	0.37	407	508	168

**10C | HOFFMAN THOMAS COUNTY M123 ET** {DLF,HYF,IEF,MSUDF}  
 44586500 | Calved: 1/13/24 | Tattoo: BE M123



EFBEEF RESOLUTE CEO (SOD) {CHB} {DLF,HYF,IEF,MSUDF,MDF,DBF}  
**HWM THOMAS COUNTY 1443 ET** {CHB} {DLF,HYF,IEF,MSUDF,MDF,DBF}  
 P44257454 H MS EXCEL 7945 ET {DLF,HYF,IEF,MSUDF,MDF,DBF}

CL 1 DOMINO 215Z (SOD) {CHB} {DLF,HYF,IEF,MSUDF,MDF}  
**CL 1 DOMINETTE 850F** {DLF,HYF,IEF}  
 43903431 CL1 DOMINETTE 5123C 1ET {DLF,HYF,IEF,MSUDF}

CE	BW	WW	YW	DMI	SC	SCF	MM	M&G	MCE
-0.8	3.8	72	114	0.9	1.1	23.4	34	70	0.9
MCW	UDDR	TEAT	CW	FAT	REA	MARB	BMI\$	BIIS	CHBS
93	1.40	1.30	96	0.033	0.76	0.45	494	608	171



CL 1 DOMINETTE 850F

**1/5 HOFFMAN RANCH**  
 modern, stout, functional

P.O. Box 287, Thedford, NE 69166  
 Jason Hoffman 530-604-5096  
 Denny Hoffman 406-425-0859  
 Office 308-645-2279  
[www.hoffmanranch.com](http://www.hoffmanranch.com)

HOFFMAN RANCH  
*Choice of Pen of Hand Sire Prospects*

Fresh on the heels of their 2024 NWSS Reserve Champion Carload of Bulls, Harvie Ranching is bringing an even deeper set of bulls for 2025! This is a rare opportunity to pick from this great set of bulls before the Harvie Ranching Annual Bull Sale March 11th, 2025 in Olds, AB.

This Carload includes the first set of ET progeny of their exciting young sire, NJWPMH Commitment 137J ET. Commitment was a Top 10 Qualifier at the 2023 Canadian West Agribition, and his progeny have been topping sales not only for Harvie Ranching, but also Lone Pines and Remittal West. The first two ET brothers are out of one of the most productive females to walk any pasture in Alberta, MS Firefly 125Y. She was the dam of the top two selling bulls in the Harvie lineup a year ago, and a full sister to these two bulls was the top selling heifer in the Harvie female sale for \$31,500 for 1/2 interest.

Also featured are the first progeny from Harvie's pick in the 2023 Champion Carload of Bulls, LAND Makers Mark 2072ET, as well as the first son of KJ MHPH RW 364C Media 240J ET ever offered in Denver.

This lineup of herd sire prospects features both power bull and heifer bull options. Take the time to research some of the performance on the dams in this offering. Whichever pick of this carload that's made, it will make a tremendous impact here in the States for many years. Harvie Ranching is retaining 1/4 semen interest in the bull selected.



HARVIE WINDFALL ET 101M



HARVIE EXCLUSIVE ET 43M



HARVIE FRONT PAGE 32M



HARVIE SHOOTER 76M

JW B716 DEVOUT 18051 (CHB)(DLF,HYF,IEF)  
**NJW PMH COMMITMENT 137J ET** (CHB)(DLF,HYF,IEF,MSUDF)  
 P44277177 NJW 79Z 103C RITA 304F ET (DLF,HYF,IEF,MDF)  
 HARVIE WINSTON 5W (HYP,DBP)  
**HARVIE MS FIREFLY 125Y** (HYP,DBP)  
 P44086738 HARVIE MS FIREFLY ET 55W (HYP)

**11A | HARVIE EXCLUSIVE ET 43M** {DLF,HYF,IEF,MSUDF}  
 AHA #: 44600678/CHA #: C03114718 | Calved: 1/26/24 | Tattoo: RE JILL43M

CE	BW	WW	YW	DMI	SC	SCF	MM	M&G	MCE
0.9	5.8	73	117	0.3	1.5	16.3	32	68	-1.5
MCW	UDDR	TEAT	CW	FAT	REA	MARB	BMI\$	BIIS	CHBS
143	1.40	1.40	77	-0.037	0.43	-0.02	366	446	122

• Homozygous Polled.

**11B | HARVIE WINDFALL ET 101M** {DLF,HYF,IEF,MSUDF}  
 AHA #: 44600691/CHA #: C03116599 | Calved: 2/7/24 | Tattoo: RE JILL101M

CE	BW	WW	YW	DMI	SC	SCF	MM	M&G	MCE
2.8	4.6	68	111	0.3	0.7	17.9	30	64	1.0
MCW	UDDR	TEAT	CW	FAT	REA	MARB	BMI\$	BIIS	CHBS
123	1.40	1.30	80	0.013	0.41	0.19	396	487	140

• Homozygous Polled.

**11C | HARVIE FRONT PAGE 32M** {DLF,HYF,IEF,MSUDF,DBF}  
 AHA #: 44600687/CHA #: C03113062 | Calved: 1/21/24 | Tattoo: RE JILL32M

LOEWEN GENESIS 616 ET (CHB)(DLF,HYF,IEF,MDF,DBF)  
**KJ MHPH RW 364C MEDIA 240J ET** (DLF,HYF,IEF,MSUDF,MDF)  
 P44228000 KJ BJ DWE 686Z SALSA 364C ET (DLF,HYF,IEF,MSUDF,MDF,DBF)  
 MHPH 101S UMPIRE 118U  
**MHPH 118U PEBBLES 130F** (HYP,DBP)  
 P44380634 MHPH 106A PEBBLES 131D (HYP,DBP)

CE	BW	WW	YW	DMI	SC	SCF	MM	M&G	MCE
7.6	1.5	61	92	0.4	1.0	18.0	28	59	3.8
MCW	UDDR	TEAT	CW	FAT	REA	MARB	BMI\$	BIIS	CHBS
86	1.40	1.40	83	0.033	0.66	0.17	392	474	134

• Homozygous Polled.

**11D | HARVIE SHOOTER 76M** {DLF,HYF,IEF,MSUDF,DBF}  
 AHA #: 44600686/CHA #: C03113376 | Calved: 2/1/24 | Tattoo: RE JILL76M

GREEN JCS MAKERS MARK 229G ET (CHB)(DLF,HYF,IEF,MSUDF,MDF,DBF)  
**LAND MAKERS MARK 2072ET** (DLF,HYF,IEF,MSUDF,MDF,DBC)  
 P44392089 TH 96A Z303 MISS DOM 302D (DLF,HYF,IEF,MSUDF,MDF,DBC)  
 REMITTAL-W RAINMAKER ET 14E (MDF,DBP)  
**REMITTAL-W BAILEY 10J** (DBP)  
 P44600660 REMITTAL-W BAILEY ET 57G

CE	BW	WW	YW	DMI	SC	SCF	MM	M&G	MCE
7.2	1.3	54	98	0.1	1.4	17.3	24	51	1.5
MCW	UDDR	TEAT	CW	FAT	REA	MARB	BMI\$	BIIS	CHBS
98	1.40	1.40	87	0.053	0.60	0.26	399	480	161

• Homozygous Polled.



GREEN JCS MAKERS MARK 229G ET (CHB){DLF,HYF,IEF,MSUDF,MDF,DBF}  
**LAND MAKERS MARK 2072ET** (DLF,HYF,IEF,MSUDF,MDF,DBF)  
 P44392089 TH 96A Z303 MISS DOM 302D (DLF,HYF,IEF,MSUDF,MDF,DBF)  
 HARVIE COOL WATER ET 190B (HYF,MDF)  
**HARVIE MS MEDONTE 236D** (DLP,HYP,DBP)  
 P44396641 HARVIE MS MEDONTE 192B (DLP,HYP,DBP)

**11E** | **HARVIE STRATTON ET 90M** {DLF,HYF,IEF,MSUDF,DBF}  
 AHA #: 44600681/CHA #: C03116596 | Calved: 2/4/24 | Tattoo: REJILL90M

CE	BW	WW	YW	DMI	SC	SCF	MM	M&G	MCE
5.9	1.3	52	89	0.1	1.6	19.8	27	53	3.0
MCW	UDDR	TEAT	CW	FAT	REA	MARB	BMI\$	BIIS	CHBS
81	1.40	1.40	71	0.033	0.24	0.12	400	473	120

• Homozygous Polled.

**11F** | **HARVIE MASTER MIND ET 86M** {DLF,HYF,IEF,MSUDF,DBF}  
 AHA #: 44600690/CHA #: C03116600 | Calved: 2/4/24 | Tattoo: REJILL86M

CE	BW	WW	YW	DMI	SC	SCF	MM	M&G	MCE
7.1	1.6	53	92	0.1	2.0	20.7	28	54	2.8
MCW	UDDR	TEAT	CW	FAT	REA	MARB	BMI\$	BIIS	CHBS
61	1.30	1.50	83	0.033	0.51	0.06	426	496	134

**11G** | **HARVIE CHIEF ET 92M** {DLF,HYF,IEF,MSUDF,DBF}  
 AHA #: 44600683/CHA #: C03116598 | Calved: 2/4/24 | Tattoo: REJILL92M



GREEN JCS MAKERS MARK 229G ET (CHB){DLF,HYF,IEF,MSUDF,MDF,DBF}  
**LAND MAKERS MARK 2072ET** (DLF,HYF,IEF,MSUDF,MDF,DBF)  
 P44392089 TH 96A Z303 MISS DOM 302D (DLF,HYF,IEF,MSUDF,MDF,DBF)  
 WHITEHAWK WARRIOR 845C ET (SSD){CHB}{DLF,HYF,IEF,MSUDF,MDF}  
**REMITALL-WBNC MARVEL 164G** (DBP)  
 P44495381 REMITALL-WEST MARVEL ET 76Y (MDF,DBP)

CE	BW	WW	YW	DMI	SC	SCF	MM	M&G	MCE
3.4	0.9	58	95	0.3	1.9	23.6	31	60	-0.2
MCW	UDDR	TEAT	CW	FAT	REA	MARB	BMI\$	BIIS	CHBS
69	1.40	1.60	86	0.043	0.61	0.23	480	567	148

**11H** | **HARVIE DESTINATION 98M** {DLF,HYF,IEF,MSUDF,DBF}  
 AHA #: 44600685/CHA #: C03113052 | Calved: 2/7/24 | Tattoo: REJILL98M



GREEN JCS MAKERS MARK 229G ET (CHB){DLF,HYF,IEF,MSUDF,MDF,DBF}  
**LAND MAKERS MARK 2072ET** (DLF,HYF,IEF,MSUDF,MDF,DBF)  
 P44392089 TH 96A Z303 MISS DOM 302D (DLF,HYF,IEF,MSUDF,MDF,DBF)  
 PYRAMID KEYSTONE 417Z  
**SSAL 417Z UNIQUE EMPRESS 21E** (HYF)  
 P44600654 HARVIE OVHF AD MS UNIQUE 152Z (HYF)

CE	BW	WW	YW	DMI	SC	SCF	MM	M&G	MCE
1.1	3.4	66	103	0.3	1.4	18.4	32	65	1.2
MCW	UDDR	TEAT	CW	FAT	REA	MARB	BMI\$	BIIS	CHBS
114	1.50	1.60	91	0.033	0.61	0.08	410	491	142

• Homozygous Polled.



HARVIE STRATTON ET 90M



HARVIE MASTER MIND ET 86M



HARVIE CHIEF ET 92M



HARVIE DESTINATION 98M



Harvie Ranching  
 2332 Twp. Rd. 320, Mountain View County  
 Alberta, T4H 4C9, Canada  
 Cole 403-994-1314  
 Jill 403-771-3502  
 charvieranching@gmail.com  
 www.harvieranching.com

HARVIE RANCHING *Choice of Calf and of Head Size Prospects*

Another great set coming from the Landgren crew! This set of herd sire prospects is the follow up to their 2023 and 2024 NWSS Grand Champion Carload of Bulls, and this might be the best set yet. A perfect blend of the freshest genetics you can get, alongside some tried and true proven workhorses has put this outstanding offering together.

All of them are ET progeny backed by some of the great donor cows that have made the Landgren program famous including the great dam of Slinger, UPS Miss Final Test 9103. There isn't enough room on these two pages to adequately talk about these great bulls, so they will speak for themselves.

Perhaps the most impactful way to describe the potential behind these great herd sires is simply how Landgren genetics have influenced this event and the Yards show at the National Western. The resulting progeny from these will be highly marketable and valuable.



LAND LAND GRANT 4033ET



LAND SLINGER 4043 ET



LAND ENTICE 4041ET

**12A | LAND LAND GRANT 4033ET** {DLF,HYF,IEF,MSUDF,MDF,DBF}

44589742 | Calved: 3/16/24 | Tattoo: BE 4033  
 LOEWEN GENESIS G16 ET {CHB}{DLF,HYF,IEF,MDF,DBF}  
**KSU LAND GRANT 153 ET** {CHB}{DLF,HYF,IEF,MSUDF,MDF,DBF}  
 P44231207  
 KSU MISS MISTY 956 ET {DLF,HYF,IEF,MSUDF}  
 JDH AH LINCOLN 106H ET {CHB}{DLF,HYF,IEF,MSUDF,MDF}  
**LAND MISS LINCOLN 2061ET** {DLF,HYF,IEF,MSUDF}  
 P44380845  
 UPS MISS FINAL TEST 9103 {DLF,HYF,IEF,MSUDF,MDF,DBF}

CE	BW	WW	YW	DMI	SC	SCF	MM	M&G	MCE
5.8	1.3	62	106	0.5	0.3	19.4	29	60	4.9
MCW	UDDR	TEAT	CW	FAT	REA	MARB	BMI\$	BIIS	CH\$
102	1.40	1.50	85	0.023	0.71	0.26	424	513	152

- Homozygous Polled.

UPS SENSATION 2296 ET {SOD}{DLF,HYF,IEF,MSUDF,MDF,DBC}  
**LAND SLINGER 2296 1046** {DLF,HYF,IEF,MSUDF,MDF,DBC}  
 P44290168  
 UPS MISS FINAL TEST 9103 {DLF,HYF,IEF,MSUDF,MDF,DBF}  
 KCF BENNETT STRATEGY 2303 ET {CHB}{DLF,HYF,IEF,MSUDF,MDF,DBC}  
**TH 96A 2303 MISS DOM 302D** {DLF,HYF,IEF,MSUDF,MDF,DBC}  
 P43694214  
 TH 122W 11X MISS DOM 96A {DOD}{DLF,HYF,IEF}

**12B | LAND SLINGER 4043 ET** {DLF,HYF,IEF,MSUDF,MDF,DBF}

44571870 | Calved: 3/11/24 | Tattoo: BE 4043

CE	BW	WW	YW	DMI	SC	SCF	MM	M&G	MCE
0.2	2.5	75	122	0.6	1.8	15.8	35	73	-0.9
MCW	UDDR	TEAT	CW	FAT	REA	MARB	BMI\$	BIIS	CH\$
128	1.30	1.40	99	0.013	0.95	0.05	385	469	151

- Homozygous Polled.

**12C | LAND SLINGER 4038 ET** {DLF,HYF,IEF,MSUDF,MDF,DBF}

44571865 | Calved: 3/10/24 | Tattoo: BE 4038

CE	BW	WW	YW	DMI	SC	SCF	MM	M&G	MCE
-5.0	5.5	78	132	0.6	1.3	17.3	36	75	-3.7
MCW	UDDR	TEAT	CW	FAT	REA	MARB	BMI\$	BIIS	CH\$
122	1.30	1.30	90	0.033	0.79	0.08	396	488	142

- Homozygous Polled.

**12D | LAND ENTICE 4041ET** {DLF,HYF,IEF,MSUDF,MDF,DBF}

44589744 | Calved: 3/18/24 | Tattoo: BE 4041  
 NJW 79Z 2311 ENDURE 173D ET {SOD}{CHB}{DLF,HYF,IEF,MSUDF,MDF,DBF}  
**UPS ENTICE 9365 ET** {CHB}{DLF,HYF,IEF,MSUDF}  
 P44058137  
 UPS MISS SENSATION 2277 ET {DLF,HYF,IEF,MDF,DBF}  
 F FINAL TEST 722 {CHB}{DLF,HYF,IEF,MSUDF,MDF,DBF}  
**UPS MISS FINAL TEST 9103** {DLF,HYF,IEF,MSUDF,MDF,DBF}  
 P44045530  
 UPS MISS ALTA 7035 {DLF,HYF,IEF,MDF,DBF}

CE	BW	WW	YW	DMI	SC	SCF	MM	M&G	MCE
2.9	4.1	77	120	0.9	1.6	28.2	33	71	4.7
MCW	UDDR	TEAT	CW	FAT	REA	MARB	BMI\$	BIIS	CH\$
130	1.50	1.50	91	0.003	0.97	0.34	568	681	161





BOYD 31Z BLUEPRINT 6153 {DLF,HYF,IEF,MSUDF,MDF,DBF}  
**GREEN JCS MAKERS MARK 229G ET** {CHB}{DLF,HYF,IEF,MSUDF,MDF,DBF}  
 P44042074 JDH AH MERCEDES 11E ET {DLF,HYF,IEF,MSUDF,MDF,DBF}

KCF BENNETT STRATEGY 2303 ET {CHB}{DLF,HYF,IEF,MSUDF,MDF,DBF}  
**TH 96A Z303 MISS DOM 302D** {DLF,HYF,IEF,MSUDF,MDF,DBF}  
 P43694214 TH 122W 11X MISS DOM 96A {DOB}{DLF,HYF,IEF}

**12E** | **LAND MAKERS MARK 4029ET** {DLF,HYF,IEF,MSUDF,MDF,DBF}  
 44582703 | Calved: 3/10/24 | Tattoo: BE 4029

CE	BW	WW	YW	DMI	SC	SCF	MM	M&G	MCE
7.7	0.0	55	98	0.2	2.0	20.7	22	50	1.0
MCW	UDDR	TEAT	CW	FAT	REA	MARB	BMI\$	BIIS	CHBS
93	1.40	1.50	79	0.003	0.50	0.11	431	505	139

• Homozygous Polled.

**12F** | **LAND MAKERS MARK 4044ET** {DLF,HYF,IEF,MSUDF,MDF,DBF}  
 44582705 | Calved: 3/19/24 | Tattoo: BE 4044

CE	BW	WW	YW	DMI	SC	SCF	MM	M&G	MCE
3.6	2.1	64	112	0.2	2.2	16.7	28	60	0.9
MCW	UDDR	TEAT	CW	FAT	REA	MARB	BMI\$	BIIS	CHBS
124	1.40	1.30	90	-0.017	0.66	-0.04	388	457	144

• Homozygous Polled.

**12G** | **LAND MAKERS MARK 4046ET** {DLF,HYF,IEF,MSUDF,MDF,DBF}  
 44582706 | Calved: 3/20/24 | Tattoo: BE 4046

CE	BW	WW	YW	DMI	SC	SCF	MM	M&G	MCE
2.5	3.0	66	111	0.2	2.3	16.6	26	59	1.1
MCW	UDDR	TEAT	CW	FAT	REA	MARB	BMI\$	BIIS	CHBS
96	1.30	1.30	84	0.013	0.58	-0.11	368	436	123

• Homozygous Polled.

**12H** | **LAND MAKERS MARK 4051ET** {DLF,HYF,IEF,MSUDF,MDF,DBF}  
 44582707 | Calved: 3/21/24 | Tattoo: BE 4051

CE	BW	WW	YW	DMI	SC	SCF	MM	M&G	MCE
2.6	2.5	60	104	0.2	2.0	15.3	23	53	1.2
MCW	UDDR	TEAT	CW	FAT	REA	MARB	BMI\$	BIIS	CHBS
134	1.50	1.50	76	-0.017	0.60	0.21	365	446	146

• Homozygous Polled.

**12I** | **LAND LINCOLN 4031ET** {DLF,HYF,IEF,MSUDF,MDF,DBF}  
 P44608510 | Calved: 3/18/24 | Tattoo: BE 4031

JDH VICTOR 719T 33Z ET {S00}{CHB}{DLF,HYF,IEF,MSUDF,DBF}  
**JDH AH LINCOLN 106H ET** {CHB}{DLF,HYF,IEF,MSUDF,MDF}  
 P44148953 AH MS 25L RUMBLER 19Z {DOB}{DLF,HYF,IEF,MSUDF,DBF}

UPS MIGHTY 7850 ET {DLF,HYF,IEF,MSUDF,MDF}  
**ROUDY 7850 210 INDIGO 169J ET** {DLF,HYF,IEF,MSUDF}  
 P44256861 ROUDY INDIGO 210 {DLF,HYF,IEF,MDF,DBF}



CE	BW	WW	YW	DMI	SC	SCF	MM	M&G	MCE
-1.0	4.3	78	123	0.6	1.0	20.3	35	73	-2.1
MCW	UDDR	TEAT	CW	FAT	REA	MARB	BMI\$	BIIS	CHBS
119	1.30	1.30	97	0.063	0.80	0.14	444	542	148

**12J** | **LAND LINCOLN 4026 ET** {DLF,HYF,IEF,MSUDF,MDF,DBF}  
 P44571838 | Calved: 3/7/24 | Tattoo: BE 4026

JDH VICTOR 719T 33Z ET {S00}{CHB}{DLF,HYF,IEF,MSUDF,DBF}  
**JDH AH LINCOLN 106H ET** {CHB}{DLF,HYF,IEF,MSUDF,MDF}  
 P44148953 AH MS 25L RUMBLER 19Z {DOB}{DLF,HYF,IEF,MSUDF,DBF}

UPS SENSATION 2276 ET {CHB}{DLF,HYF,IEF,DBP}  
**UPS 2276 MISS SENSATION 5440** {DOB}{DLF,HYF,IEF,MSUDF,MDF,DBF}  
 43612666 UPS MISS ADVANCE 3293 {IEP}



CE	BW	WW	YW	DMI	SC	SCF	MM	M&G	MCE
-0.6	3.4	72	115	0.7	1.5	16.4	35	70	-2.1
MCW	UDDR	TEAT	CW	FAT	REA	MARB	BMI\$	BIIS	CHBS
120	1.20	1.20	82	0.023	0.67	0.12	370	458	129



LAND MAKERS MARK 4029ET



LAND LINCOLN 4031ET



LAND LINCOLN 4026 ET

**Landgren RANCH**

49812 Hwy. 70  
 Bartlett, NE 68622  
 Mark cell 402-340-0673  
 Matt cell 402-340-4615  
 Reed Parker 970-597-0832

LANDGRENN RANCH *Choice of Calf and Head Size Prospects*



Casey St. Blane

PCC NEW MEXICO LADY 3308 ET

With their first consignment ever to this event, the Pérez family has brought a top donor prospect backed by one of the greatest cow families ever to walk in Nara Visa. Final Print daughters have been in huge demand the past two years, but what puts 3308 in a league of her own is a pedigree stacked by maternal greats. She stems from the past U.S. and Canadian National Champion KJ DWE Sheila 457Y, the matriarch donor whose impact on the Pérez program cannot be overstated. Many of Kyle's best producing cows are daughters and granddaughters of Sheila, including 3308's donor dam 0152. Just a four-year-old, her donor potential solidified after she ratioed 108 on her first calf. Now with 18 progeny on record, this donor is the next great producing donor for Kyle. 3308's full sister was Libby's Reserve Division Champion at the 2024 JNHE.

Kyle never selects for the extreme on EPDs and always strives for balance, and the EPD profile for this great young donor is a textbook example of that. Ranking in the top 20% of the breed for BW, 3308 offers needle moving growth numbers for growth, carcass and stayability.

Bred AI on 11/29/24 to CRR 66589 Balance 107 and they hope to have a confirmed pregnancy by sale day. Peyton and Libby are reserving the right to one flush. It's not very often you can combine a numbers profile like this with proven maternal greatness in a donor prospect. She's one to look for in Denver.



PCC NEW MEXICO LADY 0152



KJ DWE SHEILA 457Y

**13** | PCC NEW MEXICO LADY 3308 ET (DLF,HYF,IEF,MSUDF)

44538336 | Calved: 8/28/23 | Tattoo: RE 3308  
 BOYD 31Z BLUEPRINT 6153 (DLF,HYF,IEF,MSUDF,MDF,DBF)  
**RST FINAL PRINT 0016** (CHB)(DLF,HYF,IEF,MSUDF,MDF)  
 P44178105 RST MS X651 TESTED 8032 (DLF,HYF,IEF,MSUDF,MDF,DBF)  
 AHA GE-EPD  
 NJW 79Z 22Z MIGHTY 49C ET (SOD)(DLF,HYF,IEF,MSUDF,MDF)  
**PCC NEW MEXICO LADY 0152** (DLF,HYF,IEF,MSUDF)  
 44239366 PCC NEW MEXICO LADY 6002 ET (DLF,HYF,IEF)

CE	BW	WW	YW	DMI	SC	SCF	MM	M&G	MCE
2.8	1.4	76	116	0.3	1.2	22.8	32	70	-3.8
MCW	UDDR	TEAT	CW	FAT	REA	MARB	BMI\$	BIU\$	CHB\$
115	1.40	1.40	97	0.033	0.74	0.21	493	595	163

**PÉREZ**  
CATTLE COMPANY

9767 Quay Rd. O, Nara Visa, NM 88430  
 info@PerezCattleCo.com  
 Michael and Connie Pérez 575-403-7970  
 Kyle and Tonya Pérez 575-403-7971

Three bred heifers are making the short trip from Cheyenne and they're about as good of cow prospects as you will find anywhere in the country. With pedigrees straight out of Churchill's program, we were lucky enough that Gene and Cindy held back last years Denver pen of open heifers to make a slam dunk set of bred for us this year. To add icing on the cake, they're all safe AI to Sherman!

## 14A | GCS SASSAFRASS 302 {DLF,HYF,IEF,MSUDF,MDF}

44470660 | Calved: 2/8/23 | Tattoo: RE 302



CHURCHILL ROUGH RIDER 719E {DLF,HYF,IEF,MSUDF}  
**CHURCHILL ROUGHNECK 0280H ET** {DLF,HYF,IEF,MSUDF,MDF,DBF}  
 44198621 CHURCHILL W4 LADY 770E {DLF,HYF,IEF}

NJW LONG HAUL 36E ET {DLF,HYF,IEF,MSUDF,MDF,DBF}  
**CHURCHILL LADY 0320H**  
 P44196753 CHURCHILL LADY 6227D

CE	BW	WW	YW	DMI	SC	SCF	MM	M&G	MCE
0.7	2.2	71	117	0.4	2.0	18.2	41	76	1.2
MCW	UDDR	TEAT	CW	FAT	REA	MARB	BMI\$	BIIS	CHBS
111	1.50	1.60	85	0.043	0.57	0.19	409	503	146

- Sassafrass is a daughter of the straight horned, calving ease deluxe Roughneck. She's out of a Long Haul first calf heifer that Gene purchased from Churchill, and ratioed 109 at weaning. Her EPD profile puts her among the breed's elite with 7 traits in the top 4%, a high stayability index (BMS) and excellent CHBS all with a BW in the top third of the breed.
- Bred AI on 6/15/24 to Churchill W4 Sherman 2157K ET, examined safe and due on 3/25/25.



GCS SASSAFRASS 302

## 14B | GCS TIFFANY 308 {DLF,HYF,IEF,MSUDF,MDF,DBF}

44470594 | Calved: 2/22/23 | Tattoo: RE 308



CHURCHILL RED BARON 8300F ET {DLF,HYF,IEF,MSUDF,MDF,DBF}  
**CHURCHILL BIG JAKE 0265H ET** {DLF,HYF,IEF,MSUDF,MDF}  
 P44198619 SR CCC LADYSPORT 2205 Z ET {DLF,HYF,IEF}

CHURCHILL BROADWAY 858F {CHB}{DLF,HYF,IEF,MSUDF,MDF,DBF}  
**GCS BROADWAY MERYLO17**  
 P44163975 TS LIPSTICK 317 {DLF,HYF,IEF}

CE	BW	WW	YW	DMI	SC	SCF	MM	M&G	MCE
-0.3	4.6	72	122	0.6	0.6	16.7	27	63	2.0
MCW	UDDR	TEAT	CW	FAT	REA	MARB	BMI\$	BIIS	CHBS
132	1.40	1.20	91	0.033	0.60	0.16	385	477	147

- Tiffany is one of two Big Jake daughters that has great maternal on both the top and bottom side of her pedigree. Big Jake is a power bull through and through with a massive body and quite a bit of look ... but what sets him aside is his dam, the immortal Ladysport 2205! Tiffany is a power cow prospect. Her young Broadway dam has posted progeny ratios of 2@104 on her first two calves. Elite growth numbers along with a carcass data set in the top quartile of the breed, and an excellent BMI\$ and CHBS...and she's Homozygous Polled.
- Bred AI on 7/9/24 to Churchill W4 Sherman 2157K ET, examined safe and due on 4/15/25.



GCS TIFFANY 308

## 14C | GCS HOT BLOODED 313 {DLF,HYF,IEF,MSUDF,MDF}

44470600 | Calved: 3/3/23 | Tattoo: RE 313



CHURCHILL RED BARON 8300F ET {DLF,HYF,IEF,MSUDF,MDF,DBF}  
**CHURCHILL BIG JAKE 0265H ET** {DLF,HYF,IEF,MSUDF,MDF}  
 P44198619 SR CCC LADYSPORT 2205 Z ET {DLF,HYF,IEF}

CHURCHILL GALLATIN 5211C ET {DLF,HYF,IEF,MSUDF}  
**GCS STRIKE THE POSE 020** {HYPIEP}  
 44163981 TS CHERISH 413 {HYPIEP}

CE	BW	WW	YW	DMI	SC	SCF	MM	M&G	MCE
3.0	3.5	77	121	0.7	1.8	17.8	27	66	6.3
MCW	UDDR	TEAT	CW	FAT	REA	MARB	BMI\$	BIIS	CHBS
128	1.20	1.10	86	0.023	0.54	0.10	390	483	131

- Rounding out the Sticks and Stones Pen is Hot Blooded. Another Big Jake daughter, she combines incredible maternal greats such as 500C, 2205, 88X and Sensation. That coupled with another great set of growth EPDs, and her future as an excellent producer is all but cemented. She's out of another young cow of Gene's that's doing a great job, posted a nurse ratio of 109 on her first two calves.
- Bred AI on 5/27/24 to Churchill W4 Sherman 2157K ET, examined safe and due on 3/7/25.



GCS HOT BLOODED 313

## STICKS & STONES RANCH

Gene & Cindy Stillahn and family  
 307-421-1592  
 stickstillahn@gmail.com  
 3902 CR 203  
 Cheyenne, WY 82007

# 2025 STOCK SHOW

## LIVESTOCK EXHIBITORS PARKING MAP



**EXHIBITOR PASSES PARKING**  
 Lot D - Livestock Exhibitors Only  
 DPS - Passes Only

**PASSES ONLY PARKING**  
 Lot A - Accessible Only  
 Lot G - Passes Only  
 Lot H - Horse Exhibitors  
 Lot I - Vendors Only  
 Lot J - Members & Season Tickets  
 Lot K - Special Event, Members, Media & Gold Buckle  
 Lot M - Staff & Volunteers

**FREE PARKING**  
 Coliseum  
 Lot F - Employees & Volunteers

**FREE PARKING**  
 Coors Field

**ACCESSIBLE**

**ROAD CLOSED**

**FREE SHUTTLE** Shuttles will run every 10 minutes

**FREE SHUTTLE to Coors Field lot**

**PEOPLE MOVER Shuttle to Stockyards Event Center and CSU Spur Campus**

**RIDESHARE Lyft/Uber Pickup**

**ACCESS FROM I-25 & PARK AVENUE**

**COORS FIELD - LOT B FREE PARKING**

**COORS FIELD LOT A FREE PARKING**

**FREE PARKING SHUTTLES RUN EVERY 10 MINUTES**

**PASSES PARKING ENTRANCE ONLY**

**FOLLOW SIGNS TO ADDITIONAL PARKING AT COORS FIELD**



KJ 623K IMAGINE 553M ET

15

**KJ 623K IMAGINE 553M ET** {DLF,HYF,IEF,MSUDF}

44580669 | Calved: 3/8/24 | Tattoo: BE 553M

RV VALOR 9444G ET (CHB){DLF,HYF,IEF,MSUDF,MDF,DBF}

**BAR JZ ON DEMAND** {DLF,HYF,IEF,MSUDF,MDF,DBF}

P44355795

BAR JZ HANNAH 087B {DLF,HYF,IEF,MDF}



INNISFAIL TRADEMARK 1939 ET (CHB){DLF,HYF,IEF,MSUDF,MDF,DBF}

**KJ INNISFAIL 45C IMAGE 623K ET** {DLF,HYF,IEF,MSUDF}

P44374467

JDH AH MS 34X VICTOR 33245C ET {DLF,HYF,IEF,MSUDF}

CE	BW	WW	YW	DMI	SC	SCF	MM	M&G	MCE
10.1	0.8	74	114	1.0	1.1	20.6	22	59	2.6
MCW	UDDR	TEAT	CW	FAT	REA	MARB	BMI\$	BIIS	CHBS
117	1.60	1.60	94	0.053	0.81	0.63	462	588	185

Just "Imagine" ... Imagine having a donor cow with such a curve bending EPD profile for nearly every trait that gives endless possibilities for sire selection. Imagine she combines it with such a phenotypic makeup that's deserving of inclusion in a contending heifer pen at the National Western. Imagine no longer as Jensen Bros. Pen of Heifers at the National Western will include the herd changing donor prospect, KJ 623K Imagine 553M ET.

Sired by the great performance sire On Demand, Imagine's dam was a top seller in The Chosen Sale in 2023. Image 623K is out of one of the breed's greats, 45C and sired by the high volume ABS bull Trademark. Imagine ranks in the top 5% for 9 different traits, including a whopping \$210 CHBS index.

On Demand brings in the missing calving ease component which makes Imagine the complete package. She ranks in the top 8% of the breed for a total of 11 different traits! When you take into account the economically relevant traits of CE, BW, WW, REA and MARB, no other animal, bull or cow, can match her as she's #1 in the entire breed. Add to that UDDR and TEAT EPDs in the top 1% of the breed and she checks every single box ... not to mention she's Homozygous Polled!

Imagine no longer that you have to sacrifice look and eye appeal for numbers. Kevin, Sheila and Brady have done it as the next great donor in the Hereford breed will sell at the National Western.



KJ INNISFAIL 45C IMAGE 623K ET



P.O. Box 197, Courtland, KS 66939  
 Jensenks@courtland.net  
 Kevin Jensen 785-243-6397  
 Sheila Jensen 785-262-1116  
 Brady Jensen 785-614-1645  
 www.jensenbros.net

Fresh on the heels of their Reserve Champion Pen of Bulls last year at the National Western, Chapman has brought an outstanding set of Fall bred heifers in their inaugural offering in this sale. Backed by elite, proven genetics on both the top and bottom side, this lineup of future donors features some of the very best to come out of Nunnally, TN. On top of it all, they're all due to one of the high demand semen sires in all of 2024, Deluxe! All four heifers pasture exposed from 11/17 to 12/17/24 to HUTH CLC WF Deluxe K016. Pregnancy status updated sale day.



CLC RCC JT MADISON 24H 249L ET

**16A** | **CLC RCC JT MADISON 24H 249L ET** {DLF,HYF,IEF,MSUDF}  
 44541626 | Calved: 11/2/23 | Tattoo: RE 249L



SIRE: P44276463 **NJW 202C173DSTEADFAST 156J ET** {CHB}{DLF,HYF,IEF,MSUDF,MDF,DBF}  
 DAM: P44169275 **NJW 11B 81E RITA 24H ET** {DLF,HYF,IEF,MSUDF,MDF,DBF}

CE	BW	WW	YW	DMI	SC	SCF	MM	M&G	MCE
8.5	1.9	73	119	0.3	1.8	24.8	44	80	1.1
MCW	UDDR	TEAT	CW	FAT	REA	MARB	BMI\$	BIIS	CHBS
122	1.30	1.40	111	0.043	1.12	0.24	549	649	191

- We can fill a page talking about this heifer alone! Her dam was JT's choice from the NJW program, and a daughter of one of the most prolific cow families ever to walk in Sheridan, Rita 11B. The Rita 79Z daughter needs no introduction as she and her dam are responsible for putting more elite herd sires in the country than perhaps any dam/daughter combo in history. Ever since JT told me about Rita 24H, I've been after him to get a daughter in this sale, and Madison doesn't disappoint! This Steadfast daughter possesses an elite curve bending set of numbers with 11 traits in the top 5% of the breed ... and she's Homozygous Polled!



CLC HICKMAN COUNTY 80F 259L ET

**16B** | **CLC HICKMAN COUNTY 80F 259L ET** {DLF,HYF,IEF,MSUDF}  
 44541838 | Calved: 12/3/23 | Tattoo: RE 259L



SIRE: P44257454 **HWMSTHOMAS COUNTY 1443 ET** {CHB}{DLF,HYF,IEF,MSUDF,MDF,DBF}  
 DAM: P44015659 **77MISS ELLISON 16E 80F** {DLF,HYF,IEF,MSUDF,MDF,DBF}

CE	BW	WW	YW	DMI	SC	SCF	MM	M&G	MCE
0.4	4.2	79	128	0.9	1.7	15.6	28	67	-2.6
MCW	UDDR	TEAT	CW	FAT	REA	MARB	BMI\$	BIIS	CHBS
101	1.50	1.50	93	0.043	0.70	0.20	366	465	148

- Hickman County will be among the very first daughters of the 2023 NWSS Reserve Champion Polled Bull to enter production. Her dam is big bodied and loaded with pigment and she's been a great producer for Chapman and 5J's. Hickman County has power cow written all over her, and she's in the top 1% of the breed for both WW and YW to go alongside a great set of carcass numbers and a big CHBS along with being Homozygous Polled.



CLC 619D SHERIDAN 73S 230L ET

**16C** | **CLC 619D SHERIDAN 73S 230L ET** {DLF,HYF,IEF,MSUDF}  
 44542428 | Calved: 10/10/23 | Tattoo: RE 230L



SIRE: 43732924 **BCC DOMINATOR 619D** {CHB}{DLF,HYF,IEF,MDF}  
 DAM: P42693956 **NJW P606 72N DAYDREAM 73S** {DLF,HYF,IEF,MSUDF,MDF}

CE	BW	WW	YW	DMI	SC	SCF	MM	M&G	MCE
-1.6	3.0	61	98	0.4	0.9	26.1	37	67	-0.4
MCW	UDDR	TEAT	CW	FAT	REA	MARB	BMI\$	BIIS	CHBS
124	1.40	1.40	92	0.043	0.78	-0.01	520	595	131

- Remember everything mentioned on the A heifer? Sheridan is an owned daughter of another maternal legend at NJW ... 73S! To put it in Jan's own words, "73S offers Timeless, Sought After Cow Power", and it's not everyday a direct daughter is offered for sale. This heifer by Dominator puts all the pieces together in a great phenotypic package along with great balance in her EPD profile. Very high maternal traits and an elite index for Stayability (BMSI).



CLC GTN WOODBURY 87G L44 ET

**16D** | **CLC GTN WOODBURY 87G L44 ET** {DLF,HYF,IEF,MSUDF}  
 44570382 | Calved: 9/23/23 | Tattoo: RE GTN/LE L44



SIRE: P44057384 **NJW 133A 6589 MANIFEST 87G ET** {DLF,HYF,IEF,MSUDF,MDF,DBF}  
 DAM: P44069888 **DKM/GTN 6306 RAMPAGEGAL D1903** {DLF,HYF,IEF,MSUDF}

CE	BW	WW	YW	DMI	SC	SCF	MM	M&G	MCE
5.2	0.7	55	93	0.2	1.2	17.8	30	57	-0.3
MCW	UDDR	TEAT	CW	FAT	REA	MARB	BMI\$	BIIS	CHBS
89	1.40	1.50	63	0.083	0.31	0.08	360	433	102

- Rounding out the Chapman pen is a Manifest daughter with a little bit of an outcross pedigree on her dam's side. A full brother to Woodbury was the top selling bull for Chapman in their 2023 sale. A little more calving ease in this heifer's package with solid numbers across the board to go along with excellent UDDR and TEAT EPDs. Model brood cow prospect.



John Thomas Woolfolk 731-345-1585  
 johnwoolfolk99@gmail.com  
 2090 Old Airport Rd.  
 Nunnally, TN 37137  
 www.chapmanlandandcattle.com

One of the most coveted things every January is the pick of the Delaney/Atkins heifer pen, and featured for the first time in this event Jerry, Shelly, Nick and the whole crew have brought three heifers, each equipped with the pieces to make cornerstone donors in almost any program.

We'll start with the Land Grant daughter out of the full sister to Mercedes and Lincoln. This heifer is the first progeny to sell of this exceptional young donor that ratioed 109 on her first calf. 28M boasts an elite package of numbers across the board while excelling with her maternal traits. Of the 104 Land Grant daughters on record, 28M is ranked #5 for MARB, and when you consider the economically relevant traits of CE, WW, YW and MARB, she is the #1 Land Grant daughter! On top of her performance, 28M is gorgeous with extra extension and length ... and she's Homozygous Polled.

Next, the Generator daughter. Generator has been one of the top volume AI bulls the past two years, with much of that due to his incredible donor dam, 4295. 39M is part of an elite flush with 5 full brothers featured in the Annual Bulls and Breds sale ... two of them in the Delaney Denver pen. A full sister sold for \$8,000 in their online sale this Fall, and 3 maternal brothers averaged \$13,000 in their bull sale. 39M's dam is an outstanding herd bull producer, posting progeny ratios of 3@114 for WW and 2@106 for YW. This Homozygous Polled heifer is red necked, goggle eyed and ultra complete. She's sound at the ground, deep bodied and good looking.

Rounding out this pen is one of the very best On Demand daughters to sell. Her dam is out of a maternal brother to Mandate. This heifer is built great. She's perfect on her feet and legs, huge bodied yet ultra feminine and good looking. Featuring an EPD profile that is elite in many traits, 115M excels for her REA and CW along with her awesome production numbers, mating her to many of today's high marbling sires will produce progeny with tremendous revenue potential.

Because of their potential Delaney's are retaining the option of 2 flushes in the future on the pick.

**17A** | **JDH 34J 153 MISTY 28M ET** {DLF,HYF,IEF,MSUDF}

44552394 | Calved: 1/30/24 | Tattoo: BE 28M



LOEWEN GENESIS G16 ET (CHB){DLF,HYF,IEF,MDF,DBF}  
**KSU LAND GRANT 153 ET** (CHB){DLF,HYF,IEF,MSUDF,MDF,DBF}  
 P44231207  
 KSU MISS MISTY 956 ET (DLF,HYF,IEF,MSUDF)

JDH VICTOR 719T 33Z ET (SOD){CHB}{DLF,HYF,IEF,MSUDF,DBF}  
**JDH AH 19Z MS RUMBLER 34J ET** (DLF,HYF,IEF,MSUDF,MDF,DBF)  
 P44242708  
 AH MS 25L RUMBLER 19Z (OOD){DLF,HYF,IEF,MSUDF,DBF}

CE	BW	WW	YW	DMI	SC	SCF	MM	M&G	MCE
6.8	0.1	65	99	0.3	1.3	24.6	32	65	5.7
MCW	UDDR	TEAT	CW	FAT	REA	MARB	BMI\$	BIIS	CHBS
96	1.50	1.50	78	0.023	0.57	0.37	502	606	153



JDH 34J 153 MISTY 28M ET

**17B** | **JDH 71G 0333 DELLA 39M ET** {DLF,HYF,IEF,MSUDF}

44555408 | Calved: 1/31/24 | Tattoo: BE 39M



LOEWEN GENESIS G16 ET (CHB){DLF,HYF,IEF,MDF,DBF}  
**EXR GENERATOR 0333 ET** (DLF,HYF,IEF,MSUDF,MDF,DBF)  
 P44196588  
 C BAILEES MCKEE 4295 ET (MDF,DBF)

JDH 11B STUD 3134 63E (CHB){DLF,HYF,IEF,MSUDF,MDF,DBF}  
**JDH 4124 63E MS DELLA 71G** (DLF,HYF,IEF,MSUDF)  
 P44025403  
 CKP DELLA 4124 (OOD){DLF,HYF,IEF,MSUDF,MDF,DBF}

CE	BW	WW	YW	DMI	SC	SCF	MM	M&G	MCE
-5.5	3.7	61	107	0.4	1.0	24.5	34	64	-1.7
MCW	UDDR	TEAT	CW	FAT	REA	MARB	BMI\$	BIIS	CHBS
78	1.50	1.50	86	0.033	0.74	0.22	499	588	150



JDH 71G 0333 DELLA 39M ET

**17C** | **JDH 73F 619K ON DEMAND 115M ET** {DLF,HYF,IEF,MSUDF}

44555450 | Calved: 2/23/24 | Tattoo: BE 115M



RV VALOR 9444G ET (CHB){DLF,HYF,IEF,MSUDF,MDF,DBF}  
**BAR JZ ON DEMAND** (DLF,HYF,IEF,MSUDF,MDF,DBF)  
 P44355795  
 BAR JZ HANNAH 087B (DLF,HYF,IEF,MDF)

/S REVOLUTION 66128 (CHB){DLF,HYF,IEF,MSUDF,MDF,DBF}  
**JDH MS 93D REVOLUTION 73F** (DLF,HYF,IEF,MSUDF,MDF,DBF)  
 P43904837  
 JDH MS 110B DIMAGGIO 2094 93D (DBP)

CE	BW	WW	YW	DMI	SC	SCF	MM	M&G	MCE
7.4	1.4	70	108	0.7	1.3	13.8	24	59	-1.9
MCW	UDDR	TEAT	CW	FAT	REA	MARB	BMI\$	BIIS	CHBS
118	1.30	1.40	87	-0.027	0.90	0.05	337	414	134



JDH 73F 619K ON DEMAND 115M ET



**DELANEY HEREFORDS**

Jerry and Shelly Delaney Family  
 2071 Co. Rd. 101  
 Lake Benton, MN 56149  
 Jerry Delaney 507-820-0661  
 jdh@delaneyherefords.com  
 www.delaneyherefords.com

With their inaugural offering in this sale, Curtis and Cate Doubet are bringing 4 super fancy heifers backed by their #1 cow family on the ranch. In addition, two of these heifers are the first daughters to sell by the 2024 NWSS Reserve Champion Horned Bull and Canadian Western Agribition Grand Champion Bull, CCD Kingsman 3K ET! All four feature a well balanced, solid set of EPDs that will match up well to nearly any sire in the country. The progeny produced will be highly sought after and marketable.



*CCD MS MIGHTY 314M ET*



*CCD MS MIGHTY 307M ET*




*MJB MS KINGSMAN 4024M*



*MJB MS KINGSMAN 4023M*



Curtis & Cate Doubet  
 3655 Flathead Pass Rd.  
 Belgrade, MT 59714  
 Phone: 303-681-7086  
 curtisdoubet@gmail.com  
 cate@catedoubet.com

NJW 792 222 MIGHTY 49C ET (S00)(DLF,HYF,IEF,MSUDF,MDF)  
**UPS MIGHTY 7850 ET** (DLF,HYF,IEF,MSUDF,MDF)  
 43872790 UPS MISS HOMETOWN 4279 ET (DLF,HYF,IEF,MSUDF,MDF)  
  
 LJS MARK DOMINO 1321 (CHB)(DLF,HYF,IEF,MSUDF,MDF,DBF)  
**MJB GILLY 9002G** (DLF,HYF,IEF,MSUDF)  
 4412592 MJB PRIMA 7014E (DLF,HYF,IEF)

**18A | CCD MS MIGHTY 314M ET** (DLF,HYF,IEF,MSUDF)  
 44589238 | Calved: 3/8/24 | Tattoo: LE 314M

CE	BW	WW	YW	DMI	SC	SCF	MM	M&G	MCE
5.2	2.9	62	104	0.6	1.7	22.9	42	73	0.2
MCW	UDDR	TEAT	CW	FAT	REA	MARB	BMI\$	BIIS	CHBS
93	1.20	1.10	89	0.033	0.67	0.19	473	561	146

**18B | CCD MS MIGHTY 307M ET** (DLF,HYF,IEF,MSUDF)  
 44589237 | Calved: 3/7/24 | Tattoo: LE 307M

CE	BW	WW	YW	DMI	SC	SCF	MM	M&G	MCE
4.0	3.4	60	98	0.6	1.6	17.9	35	65	-0.3
MCW	UDDR	TEAT	CW	FAT	REA	MARB	BMI\$	BIIS	CHBS
99	1.20	1.10	84	0.043	0.71	0.21	395	478	139

The mother to these two Mighty 7850 daughters is the first natural calf of our 7014 donor and a near replicate to her for a striking presence, incredible build and outstanding footsize and shape. 9002 was an absolute standout from birth. 314H is flawless from the side both stopped or standing still. She flows from front to rear so smooth and is tremendous at the ground. Very soft bodied and killer looking, she will show very well if somebody wants to. The second sister, 307M, is the power cow of the pen. So much genuine width and dimension with added length of body and stoutness all the way through. She's sound structured and has tremendous balance. 307M offers big time donor potential, and is the cowboy kind that makes big time bulls.

**18C | MJB MS KINGSMAN 4024M** (DLF,HYF,IEF,MSUDF)  
 44587712 | Calved: 4/4/24 | Tattoo: LE 4024M

SR DOMINATE 308F ET (CHB)(DLF,HYF,IEF,MSUDF,MDF)  
**CCD KINGSMAN 3K ET** (DLF,HYF,IEF,MSUDF,MDF,DBF)  
 44394193 MJB FILLET 4015 (DLF,HYF,IEF)  
  
 MJB PRIME 388 (DLF,HYF,IEF,MSUDF)  
**MJB PRIMA 7014E** (DLF,HYF,IEF)  
 43848440 MJB COWGIRL 4009 (DLF,HYF,IEF)

CE	BW	WW	YW	DMI	SC	SCF	MM	M&G	MCE
0.0	5.3	65	110	0.6	1.5	17.0	31	64	3.2
MCW	UDDR	TEAT	CW	FAT	REA	MARB	BMI\$	BIIS	CHBS
132	1.10	1.10	82	0.013	0.56	0.08	377	456	128

Beautiful Kingsman daughter out of our very top donor, 7014. Her dam has a near perfect udder and outstanding eye pigment. 4024M is as good as they come for combining structural correctness, build and quality from the side with outstanding shape and power. She is big time good. Show heifer, donor cow ... it doesn't matter because she does it all.

**18D | MJB MS KINGSMAN 4023M** (DLF,HYF,IEF,MSUDF)  
 44587713 | Calved: 3/18/24 | Tattoo: LE 4023M

SR DOMINATE 308F ET (CHB)(DLF,HYF,IEF,MSUDF,MDF)  
**CCD KINGSMAN 3K ET** (DLF,HYF,IEF,MSUDF,MDF,DBF)  
 44394193 MJB FILLET 4015 (DLF,HYF,IEF)  
  
 MJB STRIKER 303 (DLF,HYF,IEF,MSUDF)  
**MJB FLAME 8034F** (DLF,HYF,IEF,MSUDF)  
 43961602 MJB FANTASTIC 2024 (DLF,HYF,IEF)

CE	BW	WW	YW	DMI	SC	SCF	MM	M&G	MCE
-1.3	4.5	65	105	0.8	1.0	14.9	35	68	7.0
MCW	UDDR	TEAT	CW	FAT	REA	MARB	BMI\$	BIIS	CHBS
115	1.10	1.10	81	-0.027	0.64	0.17	347	430	132

Another Kingsman daughter out of a top cow that will enter the donor pen in the next year or two. Her dam is overwhelming from a body, stoutness and mass standpoint with a very good udder. 4023M would probably be the top show prospect of the pen in terms of look and presence. A beautiful profile, so well balanced and soft bodied with a very good hind leg. She's a super neat one to look at.



For the past two years, Dvorak Herefords has offered pick of their calves in this auction, and now they're taking all the guess work out and bringing 4 of their very best to the National Western. The Dvorak program has been regarded as one of the top maternal batteries in the region, and with their acquisition of such great walking sires such as Final Print, Land Grant, Lincoln and Expedition, Boyd's cowherd also features the most progressive genetics you will find anywhere in the country.

Leading off this pen are two ET sisters sired by the great Final Print and out of a tremendous young Expedition dam that was flushed as a yearling. Their dam posted individual ratios of 125 for WW, 114 for YW, 130 for REA and 121 for IMF. 4131 is about as good of a heifer ever to originate in Lake Andes, SD. Powerfully made, she possesses an enviable set of numbers with 8 traits in the top 1 or 2% of the breed with a moderate BW and top index numbers for both stayability (BMIS) and CHBS. Her sister excels in her growth numbers. Of the 308 Final Print daughters on record, 4134 ranks #3 for WW and #8 for YW with a BW right around breed average. On top of it, both sisters have exceptional maternal EPDs for both their UDDR and TEAT as well as milk.

Next up is the Generator daughter. Her young Frontier dam has done a tremendous job already, as her first calf was the 2187K cow that is the dam of the first two heifers in this pen. Carrying a nurse ratio of 124, it's easy to see how she made her way into the donor pen. A full sister to this heifer was selected by Chapman Land and Cattle out of the pasture, and this heifer mated with any of the popular calving ease sires in the breed today will yield progeny with extremely high value.

Rounding out the pen is a Lincoln daughter out of a maternal sister to the great SR EXPEDITION 619G ET. Lincoln progeny have been in huge demand, and the demand for his daughters is only going to grow in the coming years. 4109M's young donor dam posted individual carcass ratios of 132 for REA and 120 for IMF. Whichever choice out of this pen of donor prospects is made will yield the type of cow that can take any program forward in their breeding program.



BOYD 31Z BLUEPRINT 6153 {DLF,HYF,IEF,MSUDF,MDF,DBF}  
**RST FINAL PRINT 0016** {CHB}{DLF,HYF,IEF,MSUDF,MDF}  
 P44178105 RST MS X651 TESTED 8032 {DLF,HYF,IEF,MSUDF,MDF,DBF}

SR EXPEDITION 619G ET {CHB}{DLF,HYF,IEF,MSUDF}  
**DVOR 619G 013 LADY FRONT 2187K** {DLF,HYF,IEF,MSUDF}  
 P44365994 DVOR 174E 8212 LADY FRONT 013H {DLF,HYF,IEF,MSUDF}

**19A** | **DVOR 0016 2187 SWEETNESS4131ET** {DLF,HYF,IEF,MSUDF}  
 44566483 | Calved: 3/11/24 | Tattoo: LE 4131

CE	BW	WW	YW	DMI	SC	SCF	MM	M&G	MCE
2.9	2.5	85	135	0.5	2.0	19.8	44	87	4.0
MCW	UDDR	TEAT	CW	FAT	REA	MARB	BMIS	BIIS	CHBS
127	1.60	1.50	97	0.063	0.90	0.27	458	571	170

**19B** | **DVOR 0016 2187 SWEETNESS4134ET** {DLF,HYF,IEF,MSUDF}  
 44566489 | Calved: 3/12/24 | Tattoo: LE 4134

CE	BW	WW	YW	DMI	SC	SCF	MM	M&G	MCE
-0.4	3.0	89	135	0.5	1.8	13.3	44	89	3.5
MCW	UDDR	TEAT	CW	FAT	REA	MARB	BMIS	BIIS	CHBS
126	1.70	1.60	91	0.033	0.67	0.11	345	447	146

**19C** | **DVOR 0333 013 LADY FRONT 496ET** {DLF,HYF,IEF,MSUDF}  
 44568327 | Calved: 3/3/24 | Tattoo: LE 496

LOEWEN GENESIS 616 ET {CHB}{DLF,HYF,IEF,MDF,DBF}  
**EXR GENERATOR 0333 ET** {DLF,HYF,IEF,MSUDF,MDF,DBF}  
 P44196588 C BAILEES MCKEE 4295 ET {MDF,DBF}

TH FRONTIER 174E {S00}{DLF,HYF,IEF,MSUDF,MDF}  
**DVOR 174E 8212 LADY FRONT 013H** {DLF,HYF,IEF,MSUDF}  
 P44143950 DVOR 124C 5123 LADY RUMBLE 8212 {D00}{DLF,HYF,IEF,MSUDF}

CE	BW	WW	YW	DMI	SC	SCF	MM	M&G	MCE
2.8	5.6	74	119	0.5	1.3	16.0	33	70	4.8
MCW	UDDR	TEAT	CW	FAT	REA	MARB	BMIS	BIIS	CHBS
129	1.40	1.40	84	0.053	0.68	0.25	378	477	147

**19D** | **DVOR ROUDY OBH DOMITA 4109M ET** {DLF,HYF,IEF,MSUDF}  
 44568675 | Calved: 3/6/24 | Tattoo: LE 4109

JDH VICTOR 7197 33Z ET {S00}{CHB}{DLF,HYF,IEF,MSUDF,DBF}  
**JDH AH LINCOLN 106H ET** {CHB}{DLF,HYF,IEF,MSUDF,MDF}  
 P44148953 AH MS 25L RUMBLER 19Z {D00}{DLF,HYF,IEF,MSUDF,DBF}

SR DOMINATE 308F ET {CHB}{DLF,HYF,IEF,MSUDF,MDF}  
**SR DOMITA 1104J ET**  
 P44265767 CHURCHILL LADY 7189E ET {DLF,HYF,IEF,MSUDF,MDF,DBF}

CE	BW	WW	YW	DMI	SC	SCF	MM	M&G	MCE
-1.3	2.9	68	110	0.7	1.1	21.6	31	65	2.6
MCW	UDDR	TEAT	CW	FAT	REA	MARB	BMIS	BIIS	CHBS
109	1.40	1.40	91	0.033	0.65	0.16	450	540	139



DVOR 619G 013 LADY FRONT 2187K



DVOR 174E 8212 LADY FRONT 013H



SR DOMITA 1104J ET

**DVORAK** HEREFORDS

30161 387th Ave., Lake Andes, SD 57356  
 Boyd 605-491-7090 • Jeff 605-491-2068

DVORAK HEREFORDS Choice of Pen of Heifers

This pen of Valor daughters might be the best set of cow prospects Grant and Linda have put together yet. All 5 have retained that great calving ease, maternal and carcass numbers Valor progeny are known for, but where they set themselves apart is their growth numbers. On top of that, they are a true representation of the GLM program as they are all natural born calves out of their top producing cows.



GLM 9444G MS KEYNOTE 2419



GLM 9444G GEMINI 2439

**20A** | **GLM 9444G MS KEYNOTE 2419** {DLF,HYF,IEF,MSUDF}

44580937 | Calved: 2/18/24 | Tattoo: BE 2419



SIRE: P44076080 **RVVALOR9444GET** {CHB}{DLF,HYF,IEF,MSUDF,MDF,DBF}  
DAM: P44179072 **GLM 33B MISS KEYNOTE 2027** {DLF,HYF,IEF,MSUDF}

CE	BW	WW	YW	DMI	SC	SCF	MM	M&G	MCE
4.4	2.5	73	119	0.7	0.8	12.1	26	62	3.3
MCW	UDDR	TEAT	CW	FAT	REA	MARB	BMI\$	BIU\$	CH\$
130	1.30	1.20	104	0.023	0.81	0.21	337	428	170

- Homozygous Polled.
- Dam Production: WW-3@111; YW-2@106; REA-2@101; IMF-2@113

**20B** | **GLM 9444G GEMINI 2439** {DLF,HYF,IEF,MSUDF}

44580906 | Calved: 2/22/24 | Tattoo: BE 2439



SIRE: P44076080 **RVVALOR9444GET** {CHB}{DLF,HYF,IEF,MSUDF,MDF,DBF}  
DAM: P44401291 **GLM 15B GEMINI 2238** {DLF,HYF,IEF,MSUDF}

CE	BW	WW	YW	DMI	SC	SCF	MM	M&G	MCE
3.5	1.3	67	104	0.4	0.8	13.8	23	56	-2.3
MCW	UDDR	TEAT	CW	FAT	REA	MARB	BMI\$	BIU\$	CH\$
99	1.40	1.30	82	0.003	0.54	0.18	333	418	140

- Dam Production: WW-1@105



GLM 9444G PEPPERMINT 2431



GLM 9444G LADY 2437

**20C** | **GLM 9444G PEPPERMINT 2431** {DLF,HYF,IEF,MSUDF}

44580923 | Calved: 2/20/24 | Tattoo: BE 2431



SIRE: P44076080 **RVVALOR9444GET** {CHB}{DLF,HYF,IEF,MSUDF,MDF,DBF}  
DAM: P44179082 **GLM 15B PEPPERMINT 2044 ET** {DLF,HYF,IEF,MSUDF}

CE	BW	WW	YW	DMI	SC	SCF	MM	M&G	MCE
3.9	2.4	66	106	0.4	1.2	19.5	31	64	3.4
MCW	UDDR	TEAT	CW	FAT	REA	MARB	BMI\$	BIU\$	CH\$
123	1.30	1.30	79	0.023	0.62	0.18	420	508	136

- Dam Production: WW-2@109; YW-1@117; REA-1@122; IMF-1@170

**20D** | **GLM 9444G LADY 2437** {DLF,HYF,IEF,MSUDF}

44580916 | Calved: 2/22/24 | Tattoo: BE 2437



SIRE: P44076080 **RVVALOR9444GET** {CHB}{DLF,HYF,IEF,MSUDF,MDF,DBF}  
DAM: P44179074 **GLM 15B LADY 2033** {DLF,HYF,IEF,MSUDF}

CE	BW	WW	YW	DMI	SC	SCF	MM	M&G	MCE
1.7	3.0	64	98	0.1	0.8	15.7	24	56	1.1
MCW	UDDR	TEAT	CW	FAT	REA	MARB	BMI\$	BIU\$	CH\$
91	1.50	1.40	88	0.033	0.43	0.20	369	455	149

- Dam Production: REA-1@103; IMF-1@102



GLM 9444G PIXIE 2417

**20E** | **GLM 9444G PIXIE 2417** {DLF,HYF,IEF,MSUDF}

44580919 | Calved: 2/18/24 | Tattoo: BE 2417



SIRE: P44076080 **RVVALOR9444GET** {CHB}{DLF,HYF,IEF,MSUDF,MDF,DBF}  
DAM: 44273961 **HFCC PIXIE 182 ET** {DLF,HYF,IEF,MSUDF}

CE	BW	WW	YW	DMI	SC	SCF	MM	M&G	MCE
3.9	0.7	51	86	0.2	0.6	13.5	18	44	4.9
MCW	UDDR	TEAT	CW	FAT	REA	MARB	BMI\$	BIU\$	CH\$
113	1.40	1.30	91	0.003	0.68	0.17	343	412	154



1226 8th Rd., Marysville, KS 66508  
Grant & Linda McKay  
Grant 308-470-1190

GLM HEREFORDS Choice of Pen of Heifers

Kendi Miigerl and her family continue to produce some of the top show heifer prospects year in and out, and this year's pen just shows the roll they are on! Their recent successes include the Grand Champion Pen of Heifers in 2022, and raising the National Champion Rollin Harley in 2023.

The makeup of this year's heifer pen is about as royally bred as can be designed. The first three heifers are out of that great Miles McKee x Harley cow that is the very dam of the 2023 NAILE Champion, KLM Rollin Harley 107J ET. The fourth heifer in the pen is daughter of that great National Champion, and out of a great Mighty daughter from Landgren Ranch.

All of these young heifers are destined for the backdrop whether it's on the county and state level or on the grand stage next year in Louisville at JNHE.

**21A | KLM MELANIA 401M ET** {DLF,HYF,IEF,MSUDF,MDF,DBC}

44601454 | Calved: 4/12/24 | Tattoo: LE 401M



CHURCHILL PILGRIM 632D ET {SOD}{DLF,HYF,IEF,MSUDF,MDF,DBF}  
**H THE PROFIT 8426 ET** {DLF,HYF,IEF,MSUDF,MDF,DBF}  
 P43916400 RST GAT NST Y79D LADY 54B ET {DLF,HYF,IEF,MSUDF,MDF,DBF}  
 C MILES MCKEE 2103 ET {SOD}{DLF,HYF,IEF,MSUDF,MDF}  
**KOLT TOO TIMING 3308 ET** {DLF,HYF,IEF,MSUDF,MDF,DBC}  
 P43724210 LCC TWO TIMIN 438 ET {DLF,HYF,IEF,DBP}

CE	BW	WW	YW	DMI	SC	SCF	MM	M&G	MCE
5.1	2.3	51	90	-0.1	0.5	14.9	25	50	-1.5
MCW	UDDR	TEAT	CW	FAT	REA	MARB	BMI\$	BIIS	CHBS
126	1.20	1.20	71	-0.017	0.64	0.24	362	435	149



KLM MELANIA 401M ET

**21B | KLM MIA 405M ET** {DLF,HYF,IEF,MSUDF,MDF,DBF}

44600708 | Calved: 4/26/24 | Tattoo: LE 405M



ECR WHO MAKER 210 ET {DLF,HYF,IEF,MSUDF}  
**K KRUSTIC 711ET** {DLF,HYF,IEF,MSUDF,DBP}  
 43848894 SULL TCC HARLEY 4069B ET {DLF,HYF,IEF,MSUDF,DBP}  
 C MILES MCKEE 2103 ET {SOD}{DLF,HYF,IEF,MSUDF,MDF}  
**KOLT TOO TIMING 3308 ET** {DLF,HYF,IEF,MSUDF,MDF,DBC}  
 P43724210 LCC TWO TIMIN 438 ET {DLF,HYF,IEF,DBP}

CE	BW	WW	YW	DMI	SC	SCF	MM	M&G	MCE
-2.6	5.7	57	96	0.0	1.3	12.8	32	61	-3.3
MCW	UDDR	TEAT	CW	FAT	REA	MARB	BMI\$	BIIS	CHBS
103	1.20	1.10	83	-0.027	0.84	-0.04	330	388	136



KLM MIA 405M ET

**21C | KLM MAVIS 402M ET** {DLF,HYF,IEF,MSUDF,MDF,DBC}

44601457 | Calved: 4/17/24 | Tattoo: LE 402M



STAR TCF LOCK-N-LOAD 300W ET {CHB}{DLF,HYF,IEF,DBP}  
**TFR KU ROLL THE DICE 1326** {DLF,HYF,IEF,MSUDF,MDF,DBF}  
 43477667 LH LANGFORD LADY 0253 ET {DLF,HYF,IEF}  
 C MILES MCKEE 2103 ET {SOD}{DLF,HYF,IEF,MSUDF,MDF}  
**KOLT TOO TIMING 3308 ET** {DLF,HYF,IEF,MSUDF,MDF,DBC}  
 P43724210 LCC TWO TIMIN 438 ET {DLF,HYF,IEF,DBP}

CE	BW	WW	YW	DMI	SC	SCF	MM	M&G	MCE
-3.0	5.9	71	117	0.4	1.1	12.1	34	70	-1.7
MCW	UDDR	TEAT	CW	FAT	REA	MARB	BMI\$	BIIS	CHBS
121	1.20	1.20	91	-0.007	0.74	0.18	333	420	158



KLM MAVIS 402M ET

**21D | KLM MAGGIE 406M ET** {DLF,HYF,IEF,MSUDF,MDF,DBF}

44600730 | Calved: 5/5/24 | Tattoo: LE 406M



TFR KU ROLL THE DICE 1326 {DLF,HYF,IEF,MSUDF,MDF,DBF}  
**KLM ROLLIN HARLEY 107J ET** {DLF,HYF,IEF,MSUDF,MDF,DBF}  
 P44291764 KOLT TOO TIMING 3308 ET {DLF,HYF,IEF,MSUDF,MDF,DBC}  
 NJW 79Z 22Z MIGHTY 49C ET {SOD}{DLF,HYF,IEF,MSUDF,MDF}  
**LAND MISS MIGHTY 711ET** {DLF,HYF,IEF,MSUDF}  
 43835697 UPS MISS NITRO 0364 ET {DLF,HYF,IEF,MDF,DBF}

CE	BW	WW	YW	DMI	SC	SCF	MM	M&G	MCE
-3.4	6.1	51	88	0.3	0.6	13.5	22	48	-4.5
MCW	UDDR	TEAT	CW	FAT	REA	MARB	BMI\$	BIIS	CHBS
110	1.30	1.20	80	0.003	0.66	0.10	325	388	130



KLM MAGGIE 406M ET



Myron, Kay and Kendi Miigerl  
 24462 Range Rd., Ravenna, NE 68869  
 Myron 308-380-5330 • Kay 308-380-7853  
 Kendi 308-850-7952 • Colten Miigerl 308-380-1836  
 mkmiigerl@hotmail.com



*KOLT CARLYS MS DIANA 588 ET*

**22A** | **KOLT CARLYS MS DIANA 588 ET** {MDF,DBF}  
 44597004 | Calved: 4/24/24 | Tattoo: LE 588

**22B** | **KOLT 2017 CARLYS MS PROFIT 424**  
 44613204 | Calved: 4/24/24 | Tattoo: LE 424

**22C** | **KOLT MARENS ANGEL 430**  
 44613205 | Calved: 4/30/24 | Tattoo: LE 430

Nate always likes to say, "The Choice is Simple", and this year's Pen of Heifers from KOLT Cattle Co. is anything but! Three outstanding April full sisters sired by the 2020 NWSS Grand Champion Polled Bull H The Profit 8426 ET that are destined for the backdrop. Profit also stems from a powerhouse cow that is also the dam of Deberard and Montgomery.

The dam of these three sisters is a member of the immortal LCC Two Timin 438 ET, or "Harley", cow family that continues to make a huge impact on this breed. Just last year at this event a Harley daughter topped the sale at \$50,000. Their dam 2017 is supported by the impressive KOLT Ms Diana 3F, a daughter of KOLT Moneyline 286 ET that is from a full sister to the legendary TCC Ms Diana 01. The Diana 3F cow was a many times national division winner for Carly Kolterman during the 2019-2020 season.

Either way you pick or choose on these three great sisters, your success is nearly assured for the upcoming show season no matter what level you are competing on.

CHURCHILL PILGRIM 632D ET (SOD){DLF,HYF,IEF,MSUDF,MDF,DBF}  
**H THE PROFIT 8426 ET** (DLF,HYF,IEF,MSUDF,MDF,DBF)  
 P43916400 RST GAT NST Y79D LADY 54B ET (DLF,HYF,IEF,MSUDF,MDF,DBF)  
 CRR ABOUT TIME 743 (SOD){DLF,HYF,IEF,MDF}  
**FBF KOLT 743 DIANE 2017** (DLF,HYF,IEF,MSUDF,MDF,DBF)  
 P44202731 KOLT MS DIANA 3F (DLF,HYF,IEF,MSUDF,DBF)

CE	BW	WW	YW	DMI	SC	SCF	MM	M&G	MCE
-0.6	4.0	60	96	-0.1	0.7	14.4	28	58	-3.9
MCW	UDDR	TEAT	CW	FAT	REA	MARB	BMI\$	BIIS	CHBS
120	1.10	1.10	74	0.003	0.55	0.00	340	407	122



*FBF KOLT 743 DIANE 2017*



Kolt Cattle Co., LLC  
 Nate Kolterman  
 520 South Evergreen Drive  
 Seward, NE 68434  
 402-641-0146  
 koltcattle.com

In 2023 Walsh Gentry 144 walked right through this sale ring and topped the sale at \$52,000. His semen has gone on to be highly sought after in the industry as he's been labeled as being one of the most unique Hereford bulls to come along in quite some time.

This pen of heifers is as exciting as it gets. First up is Monti Emerald, the full sister to Gentry. On the maternal side, she is out of the great Emerald 950H, a maternal sister to KJ TWJ 907E Liberty 159H ET, and Emerald is as proven in her show career as it gets. She was shown 13 times, and for 13 times she stood either Grand or Reserve!

The next two half sisters are the first progeny ever to sell at auction sired by the great Walsh Gentry 144! These two fancy March heifers will certainly cause people to take notice as they are destined for the backdrop. One thing is for sure ... Gentry has only begun to make his mark on this breed!

### 23A | WALSH MONTI EMERALD 100M {DBP}

44609519 | Calved: 3/20/24 | Tattoo: RE 100M

UPS SENSATION 2296 ET (SOD) (DLF,HYF,IEF,MSUDF,MDF,DBC)  
**H MONTGOMERY 7437 ET** (CHB) (DLF,HYF,IEF,MSUDF,MDF,DBC)  
 P43799223 RST GAT NST Y79D LADY 54B ET (DLF,HYF,IEF,MSUDF,MDF,DBF)  
 KJ BJ 58Z CONTENDER D56 ET (CHB) (DLF,HYF,IEF,MSUDF,MDF,DBC)  
**KJ TWJ 907E EMERALD 950H ET** (DBP)  
 P44147666 KJ BJ 339A CHARDONNAY 907E ET (DLF,HYF,IEF,MSUDF,MDF,DBF)

CE	BW	WW	YW	DMI	SC	SCF	MM	M&G	MCE
1.2	3.8	58	94	0.2	0.8	17.2	34	63	0.6
MCW	UDDR	TEAT	CW	FAT	REA	MARB	BMI\$	BIIS	CH\$
107	1.20	1.10	81	0.033	0.72	0.06	384	454	128



WALSH MONTI EMERALD 100M

### 23B | WALSH BECKY 41M {DBP}

44610751 | Calved: 3/12/24 | Tattoo: RE 41M

H MONTGOMERY 7437 ET (CHB) (DLF,HYF,IEF,MSUDF,MDF,DBC)  
**WALSH GENTRY 144** (DLF,HYF,IEF,MSUDF,MDF,DBF)  
 P44406469 KJ TWJ 907E EMERALD 950H ET (DBP)

SHOWTIME FIREBALL 734 ET (DLF,HYF,IEF,DBP)  
**FCCH FIREBALL REBEKAH 0413** (DLF,HYF,MSUDF,DBP)  
 P44277014 FCCH TRUST RHONDA 0401E (DLF,HYF,IEF,DBP)

CE	BW	WW	YW	DMI	SC	SCF	MM	M&G	MCE
-5.3	5.9	65	108	0.6	0.9	11.0	33	66	-0.7
MCW	UDDR	TEAT	CW	FAT	REA	MARB	BMI\$	BIIS	CH\$
130	1.20	1.10	88	0.003	0.76	-0.03	292	359	125



WALSH BECKY 41M

### 23C | WALSH EVALYN 33M {DBP}

44610749 | Calved: 3/28/24 | Tattoo: RE 33M

H MONTGOMERY 7437 ET (CHB) (DLF,HYF,IEF,MSUDF,MDF,DBC)  
**WALSH GENTRY 144** (DLF,HYF,IEF,MSUDF,MDF,DBF)  
 P44406469 KJ TWJ 907E EMERALD 950H ET (DBP)

STAR BRITE EXPECTATIONS 33Y ET (DLF,HYF,IEF,DBP)  
**BPH 121 BRITE EVA 627D** (DLF,HYF,IEF,DBP)  
 P43760676 SSF 832 MISS REVOLUTION 121 (HYF,DBP)

CE	BW	WW	YW	DMI	SC	SCF	MM	M&G	MCE
0.4	3.1	49	77	-0.1	0.6	16.7	25	49	2.1
MCW	UDDR	TEAT	CW	FAT	REA	MARB	BMI\$	BIIS	CH\$
85	1.30	1.30	68	0.013	0.51	0.03	358	418	111



WALSH EVALYN 33M



WALSH GENTRY 144



Walsh Cattle  
 N2791 County Rd. N  
 Lyndon Station, WI 53944  
 Clayton 608-547-0845  
 Mesa 479-236-8888

WALSH CATTLE Choice of Pen of Heifers



SHR 2078 BROOKLYN 4081



SHR GLORIA 4075 ET

**24A** | **SHR 2078 BROOKLYN 4081** {DLF,HYF,IEF,MSUDF,MDF,DBF}  
44586068 | Calved: 2/9/24 | Tattoo: LE 4081

**AHA** **CE-EPD** SIRE: P44384379 **LAND SHR MANHATTAN 2029ET** {DLF,HYF,IEF,MSUDF,MDF,DBF}  
DAM: P44392841 **SHR 9042 MS GLORY 2078** {DLF,HYF,IEF,MSUDF,MDF,DBF}

CE	BW	WW	YW	DMI	SC	SCF	MM	M&G	MCE
1.9	2.6	64	106	0.4	1.5	16.8	27	59	5.0
MCW	UDDR	TEAT	CW	FAT	REA	MARB	BMI\$	BIIS	CH\$S
109	1.30	1.30	74	-0.007	0.52	-0.03	360	431	112

• In 2023, Storey Hereford Ranch had the opportunity to purchase the pick of Landgren's Champion Carload at the Herefords In the Yards Sale. Land SHR Manhattan 2029 ET has absolutely proven himself on so many levels from being a calving ease heifer bull, to producing females of this caliber out of first calf heifers. With a Banner under her belt already, as 2024 Reserve Champion Hereford Female at NILE in Billings, Montana, this dark, pigmented, beautiful heifer calf has sure turned some heads. Practically flawless from the side, this big, soggy-middled heifer covers her tracks while staying elegant from her chin down through her chest. With Who Maker's mother fresh in her pedigree, we think this polled female is going to be extremely competitive in heifer calf divisions, while also having a bright future as an incredible bred female, but better yet, a front pasture donor cow.

**24B** | **SHR GLORIA 4075 ET** {DLF,HYF,IEF,MSUDF,MDF,DBF}  
44586048 | Calved: 2/5/24 | Tattoo: LE 4075

**AHA** **CE-EPD** SIRE: P44384379 **LAND SHR MANHATTAN 2029ET** {DLF,HYF,IEF,MSUDF,MDF,DBF}  
DAM: P4361220 **SULL DIANA 5129C ET** {DLF,HYF,IEF,MSUDF,MDF,DBF}

CE	BW	WW	YW	DMI	SC	SCF	MM	M&G	MCE
4.3	1.9	54	88	-0.1	0.8	18.6	32	59	-1.5
MCW	UDDR	TEAT	CW	FAT	REA	MARB	BMI\$	BIIS	CH\$S
88	1.50	1.30	82	0.003	0.54	0.08	407	477	139

• An extremely intriguing female in this sale offering. This conservative marked polled female will certainly catch the attention of most, with her presence alone. Going back to the famous TCC Ms Diana O1 cow, one of the most decorated females in the Hereford Breed, this Land SHR Manhattan 2029 ET daughter will blow you away with her natural center body and rib shape. Cattle this sound, soft, and pretty, are not easy to make. She combines these traits beautifully with a temperament that only a Hereford can possess.



SHR SWEET GEORGIA 4056 ET



SHR 2011 BROOKLYN 4016

**24C** | **SHR SWEET GEORGIA 4056 ET** {DLF,HYF,IEF,MSUDF,MDF,DBF}  
44585991 | Calved: 1/25/24 | Tattoo: LE 4056

**AHA** **CE-EPD** SIRE: P44378036 **CHURCHILL W4 SHERMAN 2157K ET** {DLF,HYF,IEF,MSUDF,MDF,DBF}  
DAM: P4361220 **SULL DIANA 5129C ET** {DLF,HYF,IEF,MSUDF,MDF,DBF}

CE	BW	WW	YW	DMI	SC	SCF	MM	M&G	MCE
-0.6	3.0	57	89	0.1	1.4	19.5	30	58	-0.1
MCW	UDDR	TEAT	CW	FAT	REA	MARB	BMI\$	BIIS	CH\$S
87	1.40	1.40	87	0.023	0.87	0.23	436	517	155

• One of the most unique females we have seen this fall. Sired by the High Selling Churchill W4 Sherman 2157 ET, this dark cherry red female is flat out neat. Finding one of this caliber that can be extremely competitive in the show ring, along with being a front runner donor for any program isn't easy. Backed by the famous Hereford female, TCC Diana O1, this flawless haired polled heifer calf combines power, mass, and body with a beautifully extended front end.

**24D** | **SHR 2011 BROOKLYN 4016** {DLF,HYF,IEF,MSUDF,MDF,DBF}  
44585957 | Calved: 1/15/24 | Tattoo: LE 4016

**AHA** **CE-EPD** SIRE: P44384379 **LAND SHR MANHATTAN 2029ET** {DLF,HYF,IEF,MSUDF,MDF,DBF}  
DAM: P44392208 **SHR 9042 DIANA 2011**

CE	BW	WW	YW	DMI	SC	SCF	MM	M&G	MCE
3.5	1.9	60	95	0.2	1.4	14.6	31	61	2.2
MCW	UDDR	TEAT	CW	FAT	REA	MARB	BMI\$	BIIS	CH\$S
95	1.40	1.40	96	0.013	0.83	-0.04	356	420	140

• Impeccably made, this long hipped, big legged, beautiful fronted, sound made, powerhouse of a female is one to mark in your catalog. Sired by Land SHR Manhattan 2029 ET, and out of a first calf heifer going back to Who Maker's mother, along with TCC Diana O1, and the world record selling C Miles McKee 2103 ET, this polled heifer calf has a pedigree that dreams are made of. One word we use to describe this female, is: Outstanding. You certainly do not want to miss this opportunity.



10069 River Road, Bozeman, MT 59718  
Chuck & Kathy Kohlbeck • Chuck 406-580-8255  
Katelyn Kohlbeck • 406-580-9565  
[www.storeyherefordranch.com](http://www.storeyherefordranch.com)

# NJW

**POLLED HEREFORDS**



[www.NJWHerefords.com](http://www.NJWHerefords.com)

## ANNUAL SALE MARCH 26, 2025

Selling 100 Balanced Trait, Big Bodied,  
Easy Flething, Maternally-Powered Bulls  
• Registered Yrlg Hftrs • Fall Calving Bred Hftrs

## THE NED & JAN WARD QUALITY PROGRAM

Ned & Jan Ward 406/ 757-0600

Ned (c) 307/ 751-8298

Jan (c) 307/ 751-9470

Bell Ward 307/ 751-6922

P.O. Box B • Sheridan, WY 82801  
njwardherefords@gmail.com

### RANCH LOCATIONS...

NORTH RANCH: 2637 Adsit Rd.  
Decker, MT

SOUTH RANCH: 883 Lower Prairie Dog Rd.  
Sheridan, WY

**A Commercial Customer Driven Program!**



It is our firm belief, when Breeding Cattle, the "Balanced Trait Approach" is the right one! We want as much performance as we can get while maintaining that "Critical Balance" of calving ease, cowherd and feedlot efficiency and proven carcass value. All the while, never forgetting the "Unmeasured Traits" of structural soundness, udder quality and attachment, mothering ability, vigor at birth, disposition, fertility and longevity.

### TAKE ADVANTAGE of using a Hereford bull on Your Angus...

- Heterosis = extra lbs. at weaning
- Improve fertility, feed efficiency and docility in your herd!
- Longevity ...get more years of use from a Hereford bull!





NATIONAL  
WESTERN  
*Hereford Sale*

1.17.25

HEREFORDS

*in the yards*