

— Three Generations Raising —
No Excuse Herefords

JDB Bellis Family
HEREFORDS



PARTNERS IN PERFORMANCE 2024
17TH PRODUCTION SALE

SATURDAY, OCTOBER 12 • 1:00 P.M. • AURORA, MO



JDB 504C E707 MISS CUDA L007 - LOT 1



JDB 9444G H17 ASHA M007 - LOT 6

— Three Generations Raising —
No Excuse Herefords

PARTNERS IN PERFORMANCE 2024

Jim D. Bellis Family 17th Production Sale

Saturday, October 12, 2024 • 1:00 p.m. • JD Bellis Family Farm, Aurora, Mo

Sale Location

Between Springfield and Joplin off I-44, take Exit 49 south on 174. Then take Hwy K towards Aurora, 7 miles to County Road 2170. House and farm are first on the left.

19264 Lawrence 2170, Aurora, Mo 65605

Sale Day Phones

Kevin Johansen - 573-289-1061

Jonathan Bellis - 417-440-1300

Jamie Johansen - 573-645-6317

Terms

Cash or check unless prior arrangements are made with owners.

Liability

Each animal will be at the purchaser's risk immediately after the animal is sold. Insurance can be obtained by contacting the sales clerk. Persons who attend the sale do so at their own risk. Owners assume no liability, legal or otherwise, for any accident which may occur.

Registrations/Transfers

Certificates of registration will be transferred to the buyer by the seller. No AI certificates will be provided on sires not owned by the Bellis family.

Health

Herd health is under the supervision of Dr. Ryan Jones, Aurora Animal Clinic. Health papers will be available for cattle to be shipped interstate.

EPDs

Printed EPD values are the latest and most up-to-date available from the American Hereford Association at press time. We have taken great care to make sure that the EPD data is correct, but sale day updates will be made if a mistake has occurred.

Trucking

At the buyer's request, we will help make arrangements for delivery of the cattle after the sale. Leave detailed information with the sale clerk. We recommend that you insure your purchases prior to trucking.

Insurance

Insurance can be obtained by contacting the sale clerk.

Announcements

All announcements at the sale by the owner, sale staff, or auctioneer concerning the cattle will take precedence over statements in the sale catalog. We reserve the right to withdraw any sale lot not meeting our specifications prior to sale time.

Accommodations/Airport

Springfield, MO. is served by several major airlines. The sale is located about 30 miles from the Springfield Branson National Airport. There are countless hotels in the Springfield area.

Sale Staff

Justin Stout - Auctioneer 913-645-5136

Kevin Johansen* 573-289-1061

Joe Rickabaugh* AHA 785-633-3188

Matt Caldwell* 913-755-1105

**Kevin, Joe and Matt can take phone bids on sale day.*

Acknowledgments

Catalog design & layout by Honey Creek Media.

Sale cattle video & photos by Dusk to Dawn Marketing.

Schedule of Events

Friday, October 11

1:00 p.m. Cattle viewing begins

Saturday, October 12

9:00 a.m. Cattle viewing begins

11:00 a.m. Lunch

1:00 p.m. Sale

Complete EPDs are listed for each animal in the sale. For ease of understanding the data, an EPD graph is listed for most cattle. The line in the middle of the graph represents Hereford breed average. Anything to the right of the middle line is better than average. To the left of the line is lower than breed average. The percentile rank for each trait is at the bottom of each graph.

LiveAuctions.TV

TECHNICAL SUPPORT:

682.816.4900

TechSupport@LiveAuctions.tv

Live Auction instructions on page 20

JD Bellis Family
HEREFORDS
19264 Law 2170, Aurora, Mo 65605

Dear Friends,

Welcome to our 2024 sale. This year is significant for us, as it marks the first sale since we lost our dad, Jim Bellis, earlier this year. For over 30 years, he led this herd with an unwavering commitment to producing “No Excuse Herefords” and staying true to our philosophy of being “Partners in Performance.” We are proud to continue his legacy and offer you the fruits of his life’s work, and in many ways, this sale is a tribute to his vision and passion.

Throughout the years, Dad’s letters in the sale catalogs have served as a window into his heart and the values he built this operation on. From his earliest catalogs in the 90s, he emphasized the importance of providing you—the customer—with honest, reliable information. Performance records and EPDs were not just numbers; they were the foundation of our breeding program. Dad wrote, “Performance records and EPDs are of utmost importance to progressive cattlemen,” and we still believe that today. We’ve continued to focus on genetic integrity and accuracy, and we use EPD data as the most meaningful tool for evaluating and improving the herd.

As Dad mentioned in his 2002 letter, “We’ve been using EPD data since it was first available nearly 20 years ago, and we believe it is the single most important tool for cattlemen to use when planning their herd’s genetic future.” Now, it has been over 40 years since EPD data was first available, and Dad’s belief in EPD performance continues to guide us through every mating and selection decision, and we remain committed to submitting accurate data with true contemporary groups. We know that pedigree integrity and Genetically Enhanced EPDs are vital to the future of the Hereford breed, and we continue to invest in that future.

In addition to focusing on performance, Dad was always proud of our cow families. In 1992, he wrote about the decision to focus on milk production when the breed struggled with cows that couldn’t raise a good calf. He wrote, “It was a time when National Champions were leaving daughters that milked very poorly. To us, that was totally unacceptable.” We took on the challenge to raise Herefords that excel in maternal traits, with strong udders, good fertility, and the ability to perform on fescue pasture. We hold to these principles today and are proud to say the females in this offering reflect that standard.

In 2014, when Dad’s battle with clear-cell sarcoma was discovered, despite the challenges, his love for the cattle never wavered. Over the ten years of battling cancer, Dad’s capability had peaks and valleys, yet his faith and positivity saw him through those difficult times, and it’s that same strength we carry with us now as we continue his work. Dad was laid to rest in March of this year.

In Dad’s final catalog letter last year, he spoke of the blessing of having the second and third generations involved daily in managing the herd. “What has made the most difference is that the second and third generations of this operation are involved daily in management,” he said. That’s still true today. Our family’s unwavering commitment allows us to continue offering cattle that meet the high standards Dad set decades ago, reassuring you of the quality you can expect from us.

As we present this offering, we do so with full hearts, knowing how much Dad valued each and every customer who walked through the sale ring. “Few things made him happier than creating matings that would help others grow their herds of ‘No Excuse Herefords!’ We are deeply grateful for your continued trust in our program, and we look forward to seeing how these cattle can help you achieve your breeding goals.

We hope you join us on October 12th as we honor Dad’s legacy. Please don’t hesitate to reach out if we can assist in any way as you prepare for the sale.

With deepest gratitude,

The Bellis Family

SPRING DIVISION

JDB 504C E707 MISS CUDA L007
LOT 1



1
COW

JDB 504C E707 MISS CUDA L007 DBP

44447807 DOB: 3/3/2023 Tattoo: L007 P

NJW 735 M326 TRUST 100W ET

BEHM 100W CUDA 504C

43636764

BEHM R294 JASMAN102Y

JDB Z007 14A REVOLUTION C124

JDB C124 P002 REVA E707

43870906

JDB L92 LADY SOPRANO P002

KCF BENNETT 3008 M326

NJW P606 72N DAYDREAM 73S

KCF BENNETT 9126J R294

CPH MS WRANGLER 1W

JDB T-BONE 4R REVOLUTION Z007

CLF X027 MISSOURI SKY 14A

JDB G67 SOPRANO L92

JDB 626 VICTORIA L06

CED	BW	WW	YW	DMI	SC	SCF	MM	MG	MCE
4.8	2.1	66	105	0.5	1	12.9	33	66	1.2
MCW	UDDR	TEAT	CW	FAT	REA	MARB	BMI\$	BIIS	CHBS
83	1.3	1.3	72	0.012	0.43	0.3	313	405	136



- Cow power is the best way to describe this female and the reason we lead off the catalog with **L007**. An own daughter of **BEHM 100W CUDA 504C** that provides body, muscle and would look good in anyone's operation.
- Sells safe in calf to **NJW Long Haul 36E**. AI bred 7/31/24.

Jim was mentored by his agricultural teacher, Mr. Jim Golding, who introduced him to Hereford cattle and helped him pick out his first Hereford, which was the beginning of his herd and SAE project. This introduction led to Jim being one of the pioneers in utilizing EPDs in the genetic selection of his Hereford herd. So, we are ecstatic to lead off with MISS CUDA, a true example of the quality we strive to produce. Her pedigree speaks volumes, combining the best of our breeding program with the performance traits that have been the backbone of our herd. She represents the culmination of generations of focused selection, aiming for both phenotype and genetic excellence. MISS CUDA carries the attributes we believe can push any herd forward—strength in maternal traits, balanced EPDs, and the structural soundness needed for longevity in the field. We're proud to have her leading off our catalog, knowing she embodies the same dedication to quality and integrity that has guided us for decades.



SPRING DIVISION



JDB B427 C510 LADY BELLE G016 DLE,HY,IEF,MSUDF

44058357 DOB: 3/5/2019 Tattoo: G016 P

JDB GHCC 3008 REASON W017 ET
JDB W017 Y155 BELLIS B427
 43585854 JDB 9126J BERNICE R071 Y155 ET

RRH MR FELT 3008
 JDB GHCC LADY LEGEND P098
 CL 1 DOMINO 9126J 1ET
 JDB H33 BERNICE R071
 TH 122 711 VICTOR 719T
 HUTH 2D PROSPECTA K077

JDB 719T K077 BRUNO A008 ET
JDB A008 A343 VICTRA C510
 43649454 JDB 3027 MISS DOMINO A343

UPS DOMINO 3027
 JDB R105 LADY MAGNUM W018

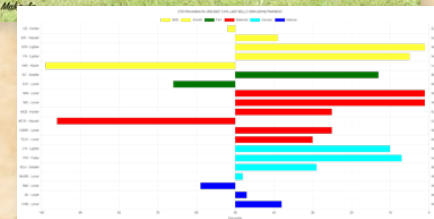
CED	BW	WW	YW	DMI	SC	SCF	MM	MG	MCE
2.9	2.3	77	113	1	1.4	15.4	43	81	3.6
MCW	UDDR	TEAT	CW	FAT	REA	MARB	BMI\$	BIIS	CHBS
119	1.3	1.3	84	-0.008	0.54	0.12	347	438	120



- **G016** has produced some quality bulls for us. We decided to retain her **JDB F391 G016 Gateway L015** son, as a junior herd sire. Her **RV Valor 9444G ET** son, **M005**, is just as good. Her performance spread will add to your cow herd producing quality females and powerhouse bulls.
- She preg checked safe to **EXR Generator 0333** on AI date 6/15/24. Pasture exposed to **KCF Bennett C776 G507 7/1-8/1/24**.
- Multiple traits in top 10%: WW, YW, MM, MG, FAT



JDB B427 C510 LADY BELLE G016 LOT 2



JDB 9444G G016 VALOR M005

44591758 DOB: 2/27/2024 Tattoo: M005 P

JDH VICTOR 719T 33Z ET
RV VALOR 9444G ET
 44076080 RV BOBBI 1404

TH 122 711 VICTOR 719T
 JDH MS YANKEE 11U ET
 ECR L18 EXTRA DEEP 9279
 HPH MISS EPTENSION 205 404
 JDB GHCC 3008 REASON W017 ET
 JDB 9126J BERNICE R071 Y155 ET
 JDB 719T K077 BRUNO A008 ET
 JDB 3027 MISS DOMINO A343

JDB W017 Y155 BELLIS B427
JDB B427 C510 LADY BELLE G016
 44058357 JDB A008 A343 VICTRA C510

CED	BW	WW	YW	DMI	SC	SCF	MM	MG	MCE
8.6	0	66	99	0.6	1.2	19.2	33	66	2.8
MCW	UDDR	TEAT	CW	FAT	REA	MARB	BMI\$	BII	CHBS
105	1.5	1.5	94	0.022	0.62	0.24	423	516	152



- Don't miss out on this young herd sire prospect. We are not offering very many bull calves in this sale. Growth and performance is his upside. **M005** can be added to your bull pen or make you dollars in your own bull sale.



JDB 9165 901G MS DAYBREAK M023 DBP

44594240 DOB: 3/18/2024 Tattoo: M023 P

SHF DAYBREAK Y02 D287 ET
PYRAMID DAYBREAK 9165
 44051992 FHF 2014 RENAE 175B

SHF YORK 19H Y02
 SHF MISS M326 T08 ET
 PYRAMID DOMINO 2014
 FHF 4029 RENAE 43Y
 SHF RIB EYE M326 R117
 FTF CLASSIC MISS 0206X
 FTF PROSPECTOR 145Y
 FTF MISS REVOLUTION 102Y

FTF PRIME PRODUCT 226Z
FTF PRIMETIME MISS 901G
 43990270 FTF MS PROSPECTOR 413B

CED	BW	WW	YW	DMI	SC	SCF	MM	MG	MCE
8.6	-0.2	59	90	0.2	1.7	17.7	34	63	7.8
MCW	UDDR	TEAT	CW	FAT	REA	MARB	BMI\$	BII	CHBS
92	1.25	1.25	76	0.047	0.65	0.24	391	475	136



- A really nice brood cow prospect out of **Pyramid Daybreak 9165**. Adding this sire to our AI rotation has proven beneficial. **M023** is very balanced with eye appeal. She will add to your replacement heifer pen. Complete sums up her overall conformation.



FTF PRIMETIME MISS 901G DLE,HY,IEF,MSUDF

43990270 DOB: 1/7/2019 Tattoo: 901G P

SHF RIB EYE M326 R117
FTF PRIME PRODUCT 226Z
 43289496 FTF CLASSIC MISS 0206X

KCF BENNETT 3008 M326
 HVH MISS HUDSON 83K 8M
 FTF CLASS ACT 629S
 FTF ENYA 303N
 HUTH PROSPECTOR K085
 FTF CHICK A BOOM 7227T
 MSU TCF REVOLUTION 4R
 FTF TOUCH OF CLASS 875U

FTF PROSPECTOR 145Y
FTF MS PROSPECTOR 413B
 43493366 FTF MISS REVOLUTION 102Y

CED	BW	WW	YW	DMI	SC	SCF	MM	MG	MCE
8.2	-0.6	55	81	0.1	1.6	13.3	33	60	9.3
MCW	UDDR	TEAT	CW	FAT	REA	MARB	BMI\$	BIIS	CHBS
71	1.2	1.3	68	0.032	0.48	0.28	318	398	130



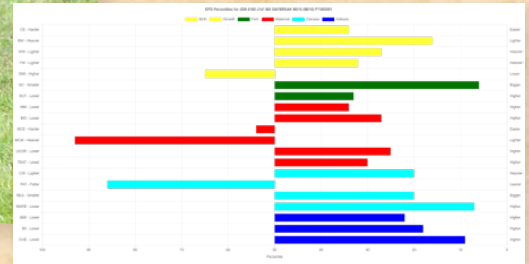
- A really nice female out of the Falling Timber herd Jim purchased along side her dam **413B**. **901G** is consistent in producing year after year. Her pedigree is stacked with production-based genetics. It was hard to offer her in this sale. Her dam **413B** is still producing for us. Longevity is expected out of this group.
- Preg checked safe to natural service to our herd sire, **KCF Bennett C776 G507**, pasture exposure 7/1-8/1/24.
- Multiple traits in the 10%: BW, SC, MCE



FTF PRIMETIME MISS 901G LOT 3



SPRING DIVISION



JDB 6165 J141 MS DAYBREAK M010 DBP

DOB: 3/1/2024 Tattoo: M010 P

SHF DAYBREAK Y02 D287 ET

PYRAMID DAYBREAK 9165

44051992

FHF 2014 RENAE 175B

KCF BENNETT C776 G507

JDB G507 D650 HOME GIRL J141

44324163

JDB W017 U066 LADY REASON D650

SHF YORK 19H Y02

SHF MISS M326 T08 ET

PYRAMID DOMINO 2014

FHF 4029 RENAE 43Y

KCF BENNETT HOMEWARD C776

KCF MISS REVOLUTION Y68

JDB GHCC 3008 REASON W017 ET

JDB N087 MISS OLATHA U066

CED	BW	WW	YW	DMI	SC	SCF	MM	MG	MCE
5	1	61	96	0.4	1.6	18.7	29	60	1.2
MCW	UDDR	TEAT	CW	FAT	REA	MARB	BMI\$	BII	CHB\$
115	1.3	1.3	79	0.047	0.61	0.36	412	507	148



- Offering choice of the **Pyramid Daybreak 9165** sisters. Two heifers that offer a lot of quality and each one has certain quality traits for anyone's needs. **M010** is out of a **KCF Bennett C776 G507** daughter that stems from the **JDB Lady Legend** cow family. This young heifer is deep sided, big hipped and sound. She has a lot of future.
- Multiple traits in the 10%: SC, MARB, CHB



JDB 9165 F811 MS DAYBREAK M011

44594516 DOB: 3/2/2024 Tattoo: M011 P

SHF DAYBREAK Y02 D287 ET

PYRAMID DAYBREAK 9165

44051992

FHF 2014 RENAE 175B

KCF BENNETT ENCORE Z311 ET

JDB Z311 B024 MISS ENCORE F811

44291248

JDB Z007 Y180 REVA B024

SHF YORK 19H Y02

SHF MISS M326 T08 ET

PYRAMID DOMINO 2014

FHF 4029 RENAE 43Y

SCHU-LAR ON TARGET 22S

KCF MISS REVOLUTION X338 ET

JDB T-BONE 4R REVOLUTION Z007

JDB W017 LADY REASON Y180

CED	BW	WW	YW	DMI	SC	SCF	MM	MG	MCE
4.1	1.7	65	108	0.5	1.7	17.7	29	62	4.3
MCW	UDDR	TEAT	CW	FAT	REA	MARB	BMI\$	BII	CHB\$
114	1.2	1.1	92	0.057	0.67	0.33	410	506	164



- Offering choice of the **Pyramid Daybreak 9165** sisters. Two heifers that offer a lot of quality and each one has certain quality traits for anyone's needs. **M011** offers a little more natural capacity and muscle. She has more bone than her paternal sister and is more moderate. Take your pick, you can't go wrong. We will be offering only one of these two heifers.
- Multiple traits in the 10%: YW, SC, CW, MARB, CHB



SPRING DIVISION



JDB 0114 K022 MS BARRACUDA M009

44594518 DOB: 3/1/2024 Tattoo: M009 S

BEHM 100W CUDA 504C

C BARRACUDA 0114 ET

44122941

C 105Y LADY DOMINO 4038

EFBEEF BR VALIDATED B413

JDB B413 7005E MISS VAL K022

44394404

RHF C16 BOX OF DREAMS 7005E

NJW 73S M326 TRUST 100W ET

BEHM R294 JASMAN102Y

CL 1 DOMINO 105Y

C 88X NOTICE ME 1311 ET

EFBEEF TFL U208 TESTED X651 ET

EFBEEF 4R THYRA Y865

MPH Z3 BOX TOP C16

RHF 200Z RED DREAM 5004C

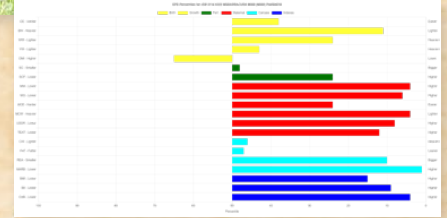
CED	BW	WW	YW	DMI	SC	SCF	MM	MG	MCE
4.6	0.5	62	92	0.4	1	19.8	37	68	3.7
MCW	UDDR	TEAT	CW	FAT	REA	MARB	BMI\$	BII	CHB\$
54	1.4	1.45	71	0.022	0.71	0.61	432	543	162



• Offering a choice of these sisters. A really cool heifer calf out of the popular **C Barracuda 0114** sire. You will notice how well **Barracuda** has worked on our cow herd. She is out of a **EFBEEF BR Validated B413** first calf heifer that did her job. **M009** has freckles and pigment. Soft bodied female that has adequate muscle, really sound on the move. A real complete heifer calf that will be very versatile. She will be dehorned.

• Multiple traits in the 10%: MM, MG, MCW, UDDR, REA, MARB, BII, CHB

JDB 0114 K022 MS BARRACUDA M009
LOT 5A



JDB 0114 K016 MS BARRACUDA M015 DBP

DOB: 3/4/2024 Tattoo: M015 P

BEHM 100W CUDA 504C

C BARRACUDA 0114 ET

44122941

C 105Y LADY DOMINO 4038

KCF BENNETT C776 G507

JDB G507 F828 HOME GIRL K016

44394424

JDB C129 Z227 REVA F828

NJW 73S M326 TRUST 100W ET

BEHM R294 JASMAN102Y

CL 1 DOMINO 105Y

C 88X NOTICE ME 1311 ET

KCF BENNETT HOMEWARD C776

KCF MISS REVOLUTION Y68

JDB Z007 A012 REVOLUTION C129

JDB W112 X035 LADY ENTOUR Z227

CED	BW	WW	YW	DMI	SC	SCF	MM	MG	MCE
2.2	1.9	66	104	0.4	1.4	13.9	34	66	0.2
MCW	UDDR	TEAT	CW	FAT	REA	MARB	BMI\$	BII	CHB\$
77	1.5	1.6	78	-0.003	0.61	0.39	343	440	154



• **M015** is a little greener in her makeup but still gives a cool look. Another daughter out of our first calf heifer group providing valuable progeny.

• Multiple traits in the 10%: MG, UDDR, TEAT, MARB, CHB

JDB 0114 K016 MS BARRACUDA M015
LOT 5B



JDB 0114 J140 MS BARRACUDA M003

44594517 DOB: 2/27/2024 Tattoo: M003 P

BEHM 100W CUDA 504C

C BARRACUDA 0114 ET

44122941

C 105Y LADY DOMINO 4038

KCF BENNETT C776 G507

JDB G507 D019 HOME GIRL J140

44324158

JDB 100W A353 LADY TRUST D019

NJW 73S M326 TRUST 100W ET

BEHM R294 JASMAN102Y

CL 1 DOMINO 105Y

C 88X NOTICE ME 1311 ET

KCF BENNETT HOMEWARD C776

KCF MISS REVOLUTION Y68

NJW 73S M326 TRUST 100W ET

JDB 4R REVA A353

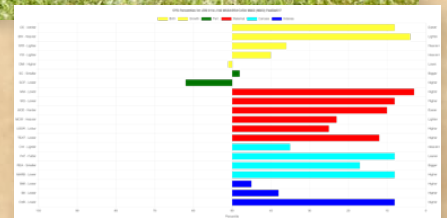
CED	BW	WW	YW	DMI	SC	SCF	MM	MG	MCE
9.9	-1.1	59	93	0.3	1	15.7	38	67	5.5
MCW	UDDR	TEAT	CW	FAT	REA	MARB	BMI\$	BII	CHB\$
77	1.35	1.4	74	-0.008	0.64	0.34	368	456	150



• **M003** stems from a **KCF Bennett C776 G507** daughter that is a cow prospect. She has a lot of body and look at that long spine. Excited to see which heifer gets picked out of this lot, you can't go wrong with any of them.

• Multiple traits in the 10%: CE, BW, MM, MG, MCE, FAT, MARB, CHB

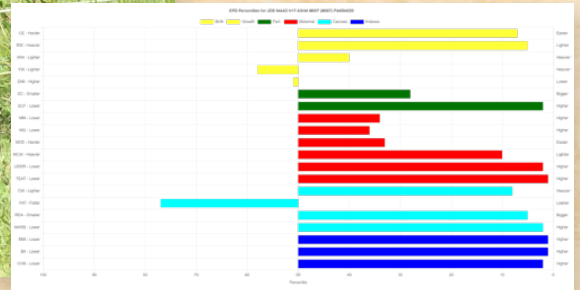
JDB 0114 J140 MS BARRACUDA M003
LOT 5C



SPRING DIVISION



JDB 9444G H17 ASHA M007
LOT 6



JDB 9444G H17 ASHA M007 DBP

44594220 DOB: 2/27/2024 Tattoo: M007 P

JDH VICTOR 719T 33Z ET

RV VALOR 9444G ET

44076080

RV BOBBI 1404

EFBEEF BR VALIDATED B413

JDB B413 E729 MISS VAL H17

44301976

JDB 028X C579 LADY SENSAT E729

TH 122 711 VICTOR 719T

JDH MS YANKEE 11U ET

ECR L18 EXTRA DEEP 9279

HPH MISS EPTENSION 205 404

EFBEEF TFL U208 TESTED X651 ET

EFBEEF 4R THYRA Y865

CHURCHILL SENSATION 028X

JDB Z007 Z006 REVA C579

CED	BW	VW	YW	DMI	SC	SCF	MM	MG	MCE
10	-0.6	58	87	0.3	1.2	26	29	58	2.9
MCW	UDDR	TEAT	CW	FAT	REA	MARB	BMI\$	BII	CHBS
66	1.55	1.6	86	0.042	0.79	0.51	534	640	174



- Junior exhibitors need to pay attention to this attractive, red necked **RV Valor 9444G** daughter. Her young mother is a **EFBEEF BR Validated B413** daughter that is a moderate and efficient female for us. **M007** has the ability to be very competitive in the show ring. She has great rib shape, big hip, big boned, super sound and a nice hair coat.
- This late February heifer calf could provide some purple ribbons next summer. **M007** is entered in the American Royal in Kansas City at the end of October.
- Multiple traits in the 10%: CE, BW, SCF, MCW, UDDR, TEAT, CW, REA, MARB, BMI, BII, CHB



JDB B413 A325 LADY VAL H117 DBP

44291241 DOB: 10/18/2020 Tattoo: H117 P

EFBEEF TFL U208 TESTED X651 ET

EFBEEF BR VALIDATED B413

43558667

EFBEEF 4R THYRA Y865

JDB 29F BOOMER DOMINO X46 ET

JDB X46 DOMINETTE A325

43457883

JDB 122L FOXY ONLINA X017 ET

EFBEEF FOREMOST U208

EFBEEF P606 MABEL R415

MSU TCF REVOLUTION 4R

EFBEEF N014 THYRA S645

CS BOOMER 29F

STAR ONLINA DOMINETTE 507P ET

REMITALL ONLINE 122L

STAR FOXY BOOMER GAL 57S ET

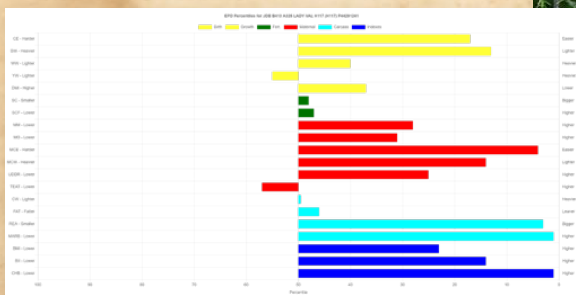
CED	BW	VW	YW	DMI	SC	SCF	MM	MG	MCE
7.6	0.7	58	88	0.2	1	17	30	59	7
MCW	UDDR	TEAT	CW	FAT	REA	MARB	BMI\$	BII\$	CHBS
69	1.3	1.2	70	0.022	0.84	0.71	408	519	180



- This female is what you look for in a young cow. Goggle eyed, dark red, big boned, big hip.
- She sells safe in calf to our young sire, **JDB G595 C595 Resolve K214**, a solid **KCF Bennett Resolve G595** son with an impressive EPD profile. The calf was sexed as a bull calf. With her being a **EFBEEF BR Validated B413** daughter, this combination could pay for your investment with the bull calf she is carrying.
- Multiple traits top 10%: MCE, REA, MARB, CHB



JDB B413 A325 LADY VAL H117
LOT 7



SPRING DIVISION



JDB 028X F063 LADY SENSATION J04 [DBP]

44301168 DOB: 1/13/2021 Tattoo: J04 P

UPS DOMINO 3027

CHURCHILL SENSATION 028X

43092364 CHURCHILL LADY 7202T ET

JDB 719T K077 BRUNO A008 ET

JDB A008 C139 VICTRA F063

43916953 JDB Z007 A004 REVA C139

CL 1 DOMINO 9126J 1ET

UPS MISS DIAMOND 1353

GH RAMBO 279R

CL 1 DOMINETTE 301N

TH 122 711 VICTOR 719T

HUTH 2D PROSPECTA K077

JDB T-BONE 4R REVOLUTION Z007

JDB 9050 Y027 RACHAEL A004 ET

CED	BW	WW	YW	DMI	SC	SCF	MM	MG	MCE
8.4	-0.3	60	90	0.3	1.5	23	34	64	3.5
MCW	UDDR	TEAT	CW	FAT	REA	MARB	BMI\$	BIIS	CHBS
82	1.4	1.5	63	0.032	0.44	0.13	442	525	106



- J04 is a nice moderate female that you do not have to worry about. A direct daughter of Churchill Sensation 028X and out of a JDB Bruno A008 dam.
- AI bred to EXR Generator 0333 on 6/2/24 and pasture exposed to JDB G595 C595 Solution K214 6/17-8/1/24.
- Multiple Traits top 10%: BW, SC, SC, UDDR, TEAT



JDB B427 A009 LADY BELLE G921 [DBP]

44225396 DOB: 12/15/2019 Tattoo: G921 P

JDB GHCC 3008 REASON W017 ET

JDB W017 Y155 BELLIS B427

43585854 JDB 9126J BERNICE R071 Y155 ET

NJW 735 M326 TRUST 100W ET

JDB 100W LADY TRUST A009

43497769 JDB L92 LADY SOPRANO P002

RRH MR FELT 3008

JDB GHCC LADY LEGEND P098

CL 1 DOMINO 9126J 1ET

JDB H33 BERNICE R071

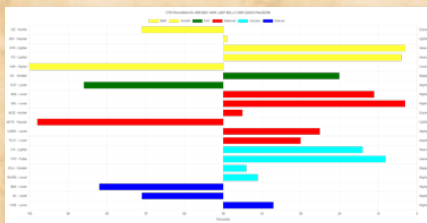
KCF BENNETT 3008 M326

NJW P606 72N DAYDREAM 735

JDB G67 SOPRANO L92

JDB 626 VICTORIA L06

CED	BW	WW	YW	DMI	SC	SCF	MM	MG	MCE
0.6	2.8	73	116	1	1.3	12.3	34	71	1.8
MCW	UDDR	TEAT	CW	FAT	REA	MARB	BMI\$	BIIS	CHBS
125	1.3	1.2	82	-0.008	0.47	0.14	299	387	123



- This female has been a favorite of ours because of the progeny she has produced. She is a daughter of a Trust cow (A009) that has produced some of our best bulls for our customers. G921 is very feminine, dark red necked with eye appeal. You can see what she can do once you look at her KCF Bennett C776 G507 daughter selling as lot 10A.
- She sells safe to C Barracuda 0114, AI date 6/15/24. Pasture exposed to KCF Bennett C776 G507 7/1-8/1/24.
- Multiple Traits top 10%: WW, YW, MG, FAT



JDB G507 G921 HOME GIRL M059 LOT 10A



JDB B427 A325 LADY BELLE G904 [DBP]

44225371 DOB: 10/28/2019 Tattoo: G904 P

JDB GHCC 3008 REASON W017 ET

JDB W017 Y155 BELLIS B427

43585854 JDB 9126J BERNICE R071 Y155 ET

JDB 29F BOOMER DOMINO X46 ET

JDB X46 DOMINETTE A325

43457883 JDB 122L FOXY ONLINA X017 ET

RRH MR FELT 3008

JDB GHCC LADY LEGEND P098

CL 1 DOMINO 9126J 1ET

JDB H33 BERNICE R071

CS BOOMER 29F

STAR ONLINA DOMINETTE 507P ET

REMITALL ONLINE 122L

STAR FOXY BOOMER GAL 57S ET

CED	BW	WW	YW	DMI	SC	SCF	MM	MG	MCE
7.2	1	57	90	0.2	1.1	4.4	29	57	4.3
MCW	UDDR	TEAT	CW	FAT	REA	MARB	BMI\$	BIIS	CHBS
91	1.3	1.3	74	0.002	0.51	0.21	192	264	135

- This female is now hitting her prime. Her dam is loaded with Hereford's most prominent pedigrees: Boomer 29F, Dominette, Online, Boomer Gal 57S. One of the better B427 daughters, G904 is long bodied, deep bodied and has enough muscle to add value to your herd.
- Preg checked safe in calf to C Barracuda 0114, AI date 6/14/24. Pasture exposed to KCF Bennett C776 G507 7/1-8/1/24.



JDB B427 A325 LADY BELLE G904 LOT 9



JDB G507 G921 HOME GIRL M059 [DBP]

44591760 DOB: 5/4/2024 Tattoo: M059 P

KCF BENNETT HOMEWARD C776

KCF BENNETT C776 G507

44105217 KCF MISS REVOLUTION Y68

JDB W017 Y155 BELLIS B427

JDB B427 A009 LADY BELLE G921

44225396 JDB 100W LADY TRUST A009

NJW 735 W18 HOMETOWN 10Y ET

KCF MISS 22S Z301 ET

MSU TCF REVOLUTION 4R

KCF MISS PROFICIENT U227

JDB GHCC 3008 REASON W017 ET

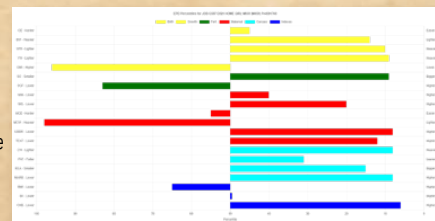
JDB 9126J BERNICE R071 Y155 ET

NJW 735 M326 TRUST 100W ET

JDB L92 LADY SOPRANO P002

CED	BW	WW	YW	DMI	SC	SCF	MM	MG	MCE
3.8	0.8	67	109	0.8	1.5	13.3	28	62	1.1
MCW	UDDR	TEAT	CW	FAT	REA	MARB	BMI\$	BIIS	CHBS
127	1.4	1.4	86	0.012	0.65	0.35	337	433	155

- A really cool heifer prospect out of KCF Bennett C776 G507. This dark red-necked heifer calf will be interesting to see as a yearling in your pasture or in the show ring. M059 has the potential to be competitive. Super long-bodied, feminine fronted with plenty of bone and muscle to stand at the front of the May class. Be sure to study this heifer calf on sale day.
- Multiple traits in the 10%: WW, YW, SC, UDDR, CW, MARB, CHB



SPRING DIVISION



JDB 1321 HI49 MISS DOMINO L034 {DBP}

44500248 DOB: 3/26/2023 Tattoo: L034 H

LJS MARK DOMINO 0945

LJS MARK DOMINO 1321

43394744

LJS MS MARK DOMINO 1125

JDB W017 A004 GOOD REASON D638

JDB D638 B020 LADY REASON H149

44301971

JDB 3027 MISS DOMINO B020

LJS MARK DOMINO 0709

LJS MS ADVANCE 0601

LJS YANKEE 0904

LJS MS MARK DOMINO 0735

JDB GHCC 3008 REASON W017 ET

JDB 9050 Y027 RACHAEL A004 ET

UPS DOMINO 3027

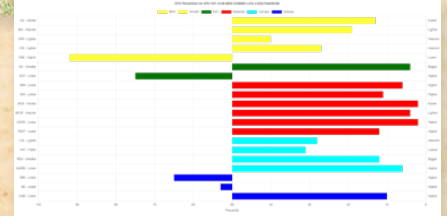
JDB 4R REVA Z038

CED	BW	WW	YW	DMI	SC	SCF	MM	MG	MCE
8.4	1.2	58	98	0.7	1.7	14.6	36	65	8
MCW	UDDR	TEAT	CW	FAT	REA	MARB	BMI\$	BII\$	CHB\$
52	1.5	1.4	76	0.012	0.69	0.38	341	431	147

- L034 is an attractive LJS MARK Domino 1321 daughter. Really long and feminine from the profile. This bred heifer has a lot of future.
- Sells safe AI bred 5/16/24 to Churchill Kingdom 128J ET.
- Multiple Traits top 10%: SC, MM, MCE, MCW, UDDR, MARB



JDB 1321 HI49 MISS DOMINO L034
LOT 11



JDB 36E J43 MS LONG HAUL L036 {HYP,DBP}

44501599 DOB: 3/30/2023 Tattoo: L036 H

CHURCHILL SENSATION 028X

NJW LONG HAUL 36E ET

43829326

NJW 79Z 10W RITA 11B

JDB W017 Y155 BELLIS B427

JDB B427 Y037 LADY BELLE J43

44301146

JDB 4R REVA Y037

UPS DOMINO 3027

CHURCHILL LADY 7202T ET

LJR 023R WHITMORE 10W

BW 91H 100W RITA 79Z ET

JDB GHCC 3008 REASON W017 ET

JDB 9126J BERNICE R071 Y155 ET

MSU TCF REVOLUTION 4R

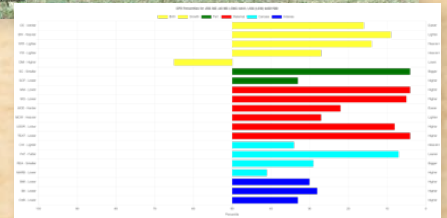
JDB H87 LEANN N081

CED	BW	WW	YW	DMI	SC	SCF	MM	MG	MCE
7.7	0.2	65	98	0.4	1.7	18.7	37	69	3.8
MCW	UDDR	TEAT	CW	FAT	REA	MARB	BMI\$	BII\$	CHB\$
80	1.4	1.5	74	-0.008	0.55	0.13	395	478	124

- A unique bred heifer out of first calf heifer. L036 is moderate with plenty of bone and an angle to her hip to provide longevity.
- Sells safe to pasture exposure to JDB F391 G016 Gateway L015, 6/3/24 to 8/23/24.
- Multiple Traits top 10%: BW, SC, MM, MG, UDDR, TEAT, FAT



JDB 36E J43 MS LONG HAUL L036
LOT 12



JDB G507 E739 HOME GIRL L037 {DBP}

44501597 DOB: 3/30/2023 Tattoo: L037 P

KCF BENNETT HOMEWARD C776

KCF BENNETT C776 G507

44105217

KCF MISS REVOLUTION Y68

EFBEEF TFL U208 TESTED X651 ET

JDB X651 Z255 MISS TESTED E739

43870939

COFO MS DUCHESS LEGEND D738

NJW 73S W18 HOMETOWN 10Y ET

KCF MISS 22S Z301 ET

MSU TCF REVOLUTION 4R

KCF MISS PROFICIENT U227

EFBEEF FOREMOST U208

EFBEEF P606 MABEL R415

EFBEEF TFL U208 TESTED X651 ET

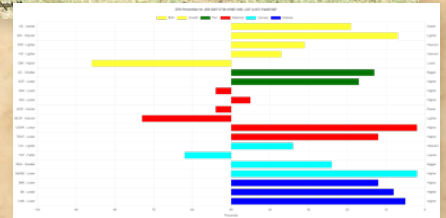
COFO MS LEGEND 113X

CED	BW	WW	YW	DMI	SC	SCF	MM	MG	MCE
7	0	60	94	0.6	1.4	20.9	26	56	1.2
MCW	UDDR	TEAT	CW	FAT	REA	MARB	BMI\$	BII\$	CHB\$
100	1.5	1.4	74	0.032	0.58	0.56	443	551	157

- Combining KCF Bennett C776 G507 and Tested made a really nice bred heifer prospect. Super balance with muscle to compliment.
- Sells safe to pasture exposure to JDB F391 G016 Gateway L015, 6/3/24 to 8/23/24. Really excited for this young herd sire's future.
- Multiple Traits top 10%: BW, UDDR, MARB, BII, CHB



JDB G507 E739 HOME GIRL L037
LOT 13



SPRING DIVISION



JDB B413 A310 MISS VAL L012 {HYP,DBP}

44497655 DOB: 3/4/2023 Tattoo: L012 P

EFBEEF TFL U208 TESTED X651 ET

EFBEEF BR VALIDATED B413

43558667 EFBEEF 4R THYRA Y865

JDB 29F BOOMER DOMINO X46 ET

JDB X46 DOMINETTE A310

43457874 JDB GHCC 122L ONLINA X089 ET

CED	BW	WW	YW	DMI	SC	SCF	MM	MG	MCE
6.7	0.1	51	79	0	1	16.8	30	55	6.4
MCW	UDDR	TEAT	CW	FAT	REA	MARB	BMI\$	BIIS	CHBS
67	1.3	1.2	67	0.032	0.75	0.7	402	507	177



- A really nice bred heifer sired by **EFBEEF BR Validated B413** and out of a **Boomer x Online** dam. Moderate and efficient, **L012** will be a great addition to the bred heifer pen.
- Sells safe to **C Barracuda 0114 ET** carrying a heifer calf due February 2025.
- Multiple Traits top 10%: BW, MCE, REA, MARB, CHB



JDB BLUE A341 LADY L044 ET {DBP}

44500219 DOB: 4/16/2023 Tattoo: L044 P

R LEADER 6964

BOYD 31Z BLUEPRINT 6153

43764491 NJW 91H 100W RITA 31Z ET

NJW 73S M326 TRUST 100W ET

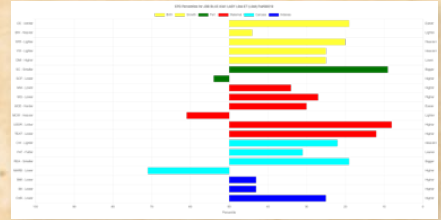
JDB 100W LADY TRUST A341 ET

43457889 STAR ONLINA DOMINETTE 507P ET

CED	BW	WW	YW	DMI	SC	SCF	MM	MG	MCE
7.2	2.4	63	99	0.1	1.5	16.5	29	60	3.1
MCW	UDDR	TEAT	CW	FAT	REA	MARB	BMI\$	BIIS	CHBS
95	1.4	1.4	78	0.012	0.62	0.05	373	447	131



- A cool goggle eyed **BOYD 31Z Blueprint** daughter out of our donor **A341 (Trust x Dominette 507P)**. This bred heifer is stout with bone and muscle.
- L044** has a bright future and sells safe to **C Barracuda 0114 ET** carrying a heifer calf due February 2025.



JDB B427 B022 LADY BELLE G910 {DBP}

44396714 DOB: 11/10/2019 Tattoo: G910 P

JDB GHCC 3008 REASON W017 ET

JDB W017 Y155 BELLIS B427

43585854 JDB 9126J BERNICE R071 Y155 ET

UPS DOMINO 3027

JDB 3027 MISS DOMINO B022

43637952 STAR ONLINA DOMINETTE 507P ET

RRH MR FELT 3008

JDB GHCC LADY LEGEND P098

CL 1 DOMINO 9126J 1ET

JDB H33 BERNICE R071

CL 1 DOMINO 9126J 1ET

UPS MISS DIAMOND 1353

REMITALL ONLINE 122L

RB L1 DOMINETTE 4059

CED	BW	WW	YW	DMI	SC	SCF	MM	MG	MCE
6.4	0.5	58	90	0.5	1.5	10.4	30	59	5.1
MCW	UDDR	TEAT	CW	FAT	REA	MARB	BMI\$	BIIS	CHBS
99	1.4	1.4	77	0.012	0.44	0.3	279	362	138

- Old school pedigree backs this nice five year old female. Combining **Domino**, **Online**, **JDB Lady Legend** and **JDB Bernice** gives a great foundation for success.
- A **JDB W017 Y155 Bellis B427** daughter with muscle and capacity to fit in any operation.



JDB G507 G910 HOMEWARD M028 {DBP}

44591759 DOB: 3/23/2024 Tattoo: M028 P

KCF BENNETT HOMEWARD C776

KCF BENNETT C776 G507

44105217 KCF MISS REVOLUTION Y68

JDB W017 Y155 BELLIS B427

JDB B427 B022 LADY BELLE G910

44396714 JDB 3027 MISS DOMINO B022

NJW 73S W18 HOMETOWN 10Y ET

KCF MISS 22S Z301 ET

MSU TCF REVOLUTION 4R

KCF MISS PROFICIENT U227

JDB GHCC 3008 REASON W017 ET

JDB 9126J BERNICE R071 Y155 ET

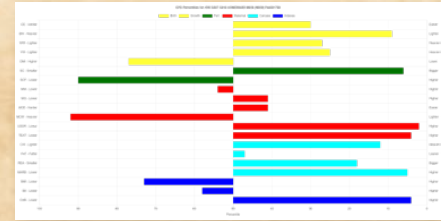
UPS DOMINO 3027

STAR ONLINA DOMINETTE 507P ET

CED	BW	WW	YW	DMI	SC	SCF	MM	MG	MCE
5.6	0.2	61	99	0.5	1.6	12.2	26	57	2.2
MCW	UDDR	TEAT	CW	FAT	REA	MARB	BMI\$	BIIS	CHBS
114	1.5	1.5	83	0.022	0.63	0.42	325	419	162



- A good bull calf out of **KCF Bennett C776 G507**.



Partners in Performance dates back to 1989, our dad's first sales as neighboring breeders gathered to assemble a proven offering. Today, we are still proud to be your Partner in Performance, bringing you cattle that produce on paper and in the pasture.

SPRING DIVISION



The Lady Boom N045 influence in our herd is the reason for the consistency, performance and eye appeal. You will see daughters Bernice R071, Victra S015 and others scattered across this sale offering. N045, in her own right, was productive in the show ring, pasture and donor pen. Be confident when seeing her influence, which provides many attributes, the highest one being fertility.



JDB LEADER F001 ALEXA K001 {DBP}

44453723 DOB: 1/4/2022 Tattoo: K001 P

HYALITE ON TARGET 936

R LEADER 6964

43500058

R MISS REVOLUTION 1009

CRR 719 CATAPULT 109

JDB 109 S015 ALEXA F1 ET

44154638

JDB P606 VICTRA BOOMER S015

SCHU-LAR ON TARGET 225

HYALITE TS LASS 310

MSU TCF REVOLUTION 4R

R MISS WRANGLER 3007

TH 122 711 VICTOR 719T

CRR 4037 ECLIPSE 808

PW VICTOR BOOMER P606

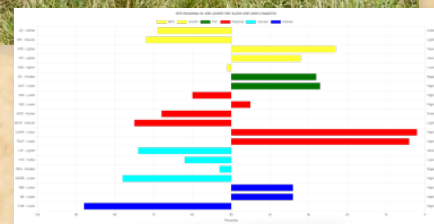
JDB D65 LADY BOOM N045

CED	BW	WW	YW	DMI	SC	SCF	MM	MG	MCE
1.2	3.7	62	96	0.2	1.2	19.3	25	56	0.1
MCW	UDDR	TEAT	CW	FAT	REA	MARB	BMI\$	BIIS	CHBS
100	1.5	1.5	65	0.032	0.43	0.03	387	463	100



- Consigned by Harper Johansen, **K001** did a great job with her first calf. Another **R Leader 6964** daughter, she mimics her granddam **S105** from the **JDB Lady Boom** cow family.
- Sells safe in calf to **C Barracuda 0114 ET** AI bred on 6/2/24 and pasture exposed to **JDB G595 C595 Solution K214** 6/17-8/1/24.

JDB LEADER F001 ALEXA K001 LOT 17



JDB 0114 K001 BARRACUDA M024

DOB: 3/19/2024 Tattoo: M024 H

BEHM 100W CUDA 504C

C BARRACUDA 0114 ET

44122941

C 105Y LADY DOMINO 4038

R LEADER 6964

JDB LEADER F001 ALEXA K001

44453723

JDB 109 S015 ALEXA F1 ET

NJW 735 M326 TRUST 100W ET

BEHM R294 JASMAN102Y

CL 1 DOMINO 105Y

C 88X NOTICE ME 1311 ET

HYALITE ON TARGET 936

R MISS REVOLUTION 1009

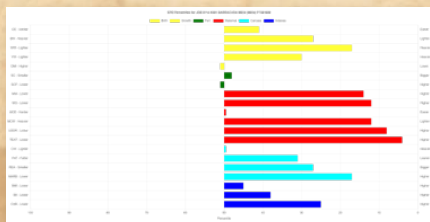
CRR 719 CATAPULT 109

JDB P606 VICTRA BOOMER S015

CED	BW	WW	YW	DMI	SC	SCF	MM	MG	MCE
4.2	1.7	64	97	0.3	1	16.8	33	65	1.5
MCW	UDDR	TEAT	CW	FAT	REA	MARB	BMI\$	BIIS	CHBS
69	1.45	1.5	70	0.007	0.56	0.25	368	456	130



- A solid, horned bull calf out of **C Barracuda 0114 ET**. A complete calf to add to your bull pen for your customers.



These are some of the earliest photos of our dad's herd. He started showing cattle, knowing nothing, but his parents supported him, and his grandparents encouraged him, taking him to shows.



SPRING DIVISION



JDB D638 B418 GOOD REASON H144 {DBP}

44286115 DOB: 11/22/2020 Tattoo: H144 P

JDB GHCC 3008 REASON W017 ET

JDB W017 A004 GOOD REASON D638

43762743 JDB 9050 Y027 RACHAEL A004 ET

THM DURANGO 4037

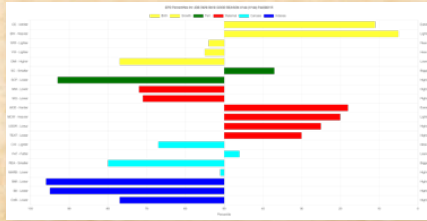
JDB X027 LADY B418

43586040 JDB 533P BRIGHT X050

RRH MR FELT 3008
JDB GHCC LADY LEGEND P098
BOYD WORLDWIDE 9050 ET
JDB 4R REVA Y027
CS BOOMER 29F
THM 7085 VICTRA 9036
STAR BRIGHT FUTURE 533P ET
JDB L92 LADY SOPRANO P002

CED	BW	WW	YW	DMI	SC	SCF	MM	MG	MCE
8.9	-0.6	55	88	0.5	1.1	11.5	23	51	4.4
MCW	UDDR	TEAT	CW	FAT	REA	MARB	BMI\$	BIIS	CHBS
74	1.3	1.3	67	0.022	0.29	0.11	264	334	105

- A solid four-year-old cow that is moderate in size and thrives on fescue grass.
- She sells safe to **RV Valor 9444G** with a bull calf. AI date 6/3/24. We are excited about our **Valor** calves. Take a look at her heifer calf, **M040** and you can see the quality she produces.



JDB 9444G H144 MS VALOR M040 {DBP}

44591762 DOB: 3/30/2024 Tattoo: M040 P

JDH VICTOR 719T 33Z ET

RV VALOR 9444G ET

44076080 RV BOBBI 1404

JDB W017 A004 GOOD REASON D638

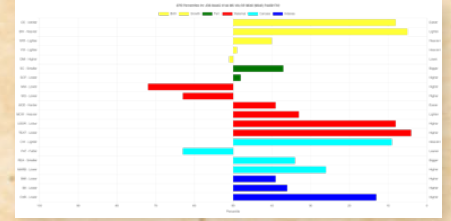
JDB D638 B418 GOOD REASON H144

44286115 JDB X027 LADY B418

TH 122 711 VICTOR 719T
JDH MS YANKEE 11U ET
ECR L18 EXTRA DEEP 9279
HPH MISS EPTENSION 205 404
JDB GHCC 3008 REASON W017 ET
JDB 9050 Y027 RACHAEL A004 ET
THM DURANGO 4037
JDB 533P BRIGHT X050

CED	BW	WW	YW	DMI	SC	SCF	MM	MG	MCE
9.9	-0.5	58	90	0.3	1.1	17.1	23	52	2.4
MCW	UDDR	TEAT	CW	FAT	REA	MARB	BMI\$	BIIS	CHBS
82	1.4	1.5	85	0.032	0.52	0.2	379	460	142

- A nice late March heifer calf out of **RV Valor 9444G**.



JDB C555 C595 MISS TRUST H111 {DBP}

44291238 DOB: 10/1/2020 Tattoo: H111 P

NJW 73S M326 TRUST 100W ET

JDB 100W 507P TRUST C555 ET

43775798 STAR ONLINIA DOMINETTE 507P ET

JDB T-BONE 4R REVOLUTION Z007

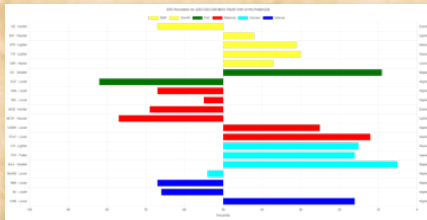
JDB Z007 S137 REVA C595

43653299 JDB N037 MISS ADVANCE S137

KCF BENNETT 3008 M326
NJW P606 72N DAYDREAM 73S
REMITALL ONLINE 122L
RB L1 DOMINETTE 4059
MSU TCF REVOLUTION 4R
JDB 7176 HOLLY X023
JDB 767G ADVANCE N037
4S H87 ANN 4050

CED	BW	WW	YW	DMI	SC	SCF	MM	MG	MCE
1.5	2.4	60	97	0.2	1.5	13.4	25	55	0.1
MCW	UDDR	TEAT	CW	FAT	REA	MARB	BMI\$	BIIS	CHBS
101	1.3	1.4	81	0.002	0.81	0.1	334	406	138

- This **JDB 100W 507P Trust C555** daughter is just like her paternal sisters. Long bodied, feminine and good footed. Dark red in color and with her pedigree, you can utilize her any way you need.
- Bred AI to **RV Valor 9444G** on 6/3/24. Pasture exposed to **JDB G595 C595 Solution K214** 6/17-8/1/24.



JDB 81E H111 MS HISTORIC M031 {DBP}

44594674 DOB: 3/28/2024 Tattoo: M031 P

CHURCHILL SENSATION 028X

NJW 160B 028X HISTORIC 81E ET

43829334 NJW 73S 38W DAYDREAM 160B

JDB 100W 507P TRUST C555 ET

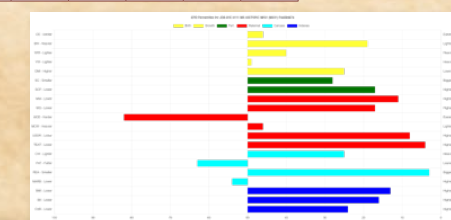
JDB C555 C595 MISS TRUST H111

44291238 JDB Z007 S137 REVA C595

UPS DOMINO 3027
CHURCHILL LADY 7202T ET
NJW 76S P20 BEEF 38W ET
NJW P606 72N DAYDREAM 73S
NJW 73S M326 TRUST 100W ET
STAR ONLINIA DOMINETTE 507P ET
JDB T-BONE 4R REVOLUTION Z007
JDB N037 MISS ADVANCE S137

CED	BW	WW	YW	DMI	SC	SCF	MM	MG	MCE
3.7	1.2	58	90	0.1	1.2	20.9	34	63	-1.3
MCW	UDDR	TEAT	CW	FAT	REA	MARB	BMI\$	BIIS	CHBS
88	1.4	1.5	77	0.027	0.87	0.1	441	514	131

- Neat late March **NJW 160B 028X Historic 81E** heifer calf.



FALL DIVISION

JDB 6964 7539 JEWEL J50
LOT 20



JDB 6964 7539 JEWEL J50 [DBP]

44301171 DOB: 5/9/2021 Tattoo: J50 P

HYALITE ON TARGET 936

R LEADER 6964

43500058 R MISS REVOLUTION 1009

CRR 719 CATAPULT 109

JDB 109 S015 EVEREST 7539 ET

43925979 JDB P606 VICTRA BOOMER S015

SCHU-LAR ON TARGET 22S

HYALITE TS LASS 310

MSU TCF REVOLUTION 4R

R MISS WRANGLER 3007

TH 122 711 VICTOR 719T

CRR 4037 ECLIPSE 808

PW VICTOR BOOMER P606

JDB D65 LADY BOOM N045

CED	BW	WW	YW	DMI	SC	SCF	MM	MG	MCE
0.3	4.3	65	100	0.3	1.2	18.7	25	57	-0.5
MCW	UDDR	TEAT	CW	FAT	REA	MARB	BMI\$	BIIS	CHBS
106	1.6	1.6	65	0.032	0.44	0.02	379	456	100



- Consigned by Harper Johansen, she is excited to offer one of two **R Leader 6964** daughters in this sale. **J50** was shown at the Missouri State Fair as a yearling. Harper showed a daughter out of her and **Churchill Sensation 028X** this year being very competitive. **J50** is long bodied, has a very feminine look and plenty of bone.



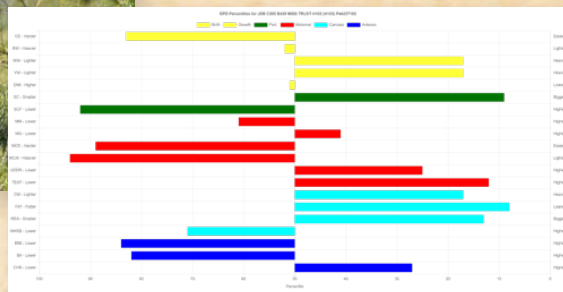
- She has a heifer calf **Lot 20A (M406)** at side by **EXR Generator 0333** born 8/29/24 with a BW 65.



JDB 028X J50 JEWEL L046

FALL DIVISION

JDB C555 B435 MISS TRUST H103
LOT 21



21
COW

JDB C555 B435 MISS TRUST H103 [DBP]

44237182 DOB: 8/25/2020 Tattoo: H103 P

NJW 735 M326 TRUST 100W ET

JDB 100W 507P TRUST C555 ET

43775798 STAR ONLINIA DOMINETTE 507P ET

JDB 743 25W ON TIME Z214 ET

JDB Z214 X075 KEYSHA B435

43585841 JDB N037 MISS ADVANCE X075

KCF BENNETT 3008 M326

NJW P606 72N DAYDREAM 735

REMITALL ONLINE 122L

RB L1 DOMINETTE 4059

CRR ABOUT TIME 743

STAR KKH SF KEYSHONA 25W ET

JDB 767G ADVANCE N037

JDB P606 VICTRA BOOMER S036

CED	BW	WW	YW	DMI	SC	SCF	MM	MG	MCE
-0.7	2.8	64	103	0.3	1.5	11.6	26	58	-2.4
MCW	UDDR	TEAT	CW	FAT	REA	MARB	BMI\$	BIIS	CHBS
114	1.3	1.4	80	-0.008	0.68	0.05	301	372	129

- A really good female with a heifer calf **Lot 21A (M401)** born to **Churchill Red Thunder** on 8/28 with a BW of 68. This female has a stacked pedigree from the Hereford breed. You can do a number of things with this young female. Don't miss this opportunity.



23
COW

JDB G507 305F HOME GIRL K085 HYP,DBP

44394403 DOB: 4/25/2022 Tattoo: K085 P

KCF BENNETT HOMEWARD C776

KCF BENNETT C776 G507

44105217 KCF MISS REVOLUTION Y68

HCF SF 100W ASSURANCE 340

OF VIOLET ANN 305F

43952460 OF CHARLOTTE D05Z

NJW 735 W18 HOMETOWN 10Y ET

KCF MISS 22S Z301 ET

MSU TCF REVOLUTION 4R

KCF MISS PROFICIENT U227

NJW 735 M326 TRUST 100W ET

SF RHONDA 39U 115

FTF PRINCE LEE 925W

TC MISS TERRI 34J

CED	BW	WW	YW	DMI	SC	SCF	MM	MG	MCE
5.8	-0.4	52	88	0.2	1.2	15.6	22	48	2.2
MCW	UDDR	TEAT	CW	FAT	REA	MARB	BMI\$	BIIS	CHBS
112	1.4	1.4	75	0.012	0.57	0.28	363	441	145



- An exciting young **KCF Bennett C776 G507** daughter we held over to calve in the fall. A very balanced female with plenty of milk as a first calf heifer.
- She has a heifer calf **Lot 23A (M412)** by **Birdwell Long Run 7098 1665** born 8/29/24 with a BW of 67.



22
COW

JDB D638 A341 MISS GOOD R H127 DBP

44290176 DOB: 12/2/2020 Tattoo: H127 P

JDB GHCC 3008 REASON W017 ET

JDB W017 A004 GOOD REASON D638

43762743 JDB 9050 Y027 RACHAEL A004 ET

NJW 735 M326 TRUST 100W ET

JDB 100W LADY TRUST A341 ET

43457889 STAR ONLINIA DOMINETTE 507P ET

RRH MR FELT 3008

JDB GHCC LADY LEGEND P098

BOYD WORLDWIDE 9050 ET

JDB 4R REVA Y027

KCF BENNETT 3008 M326

NJW P606 72N DAYDREAM 735

REMITALL ONLINE 122L

RB L1 DOMINETTE 4059

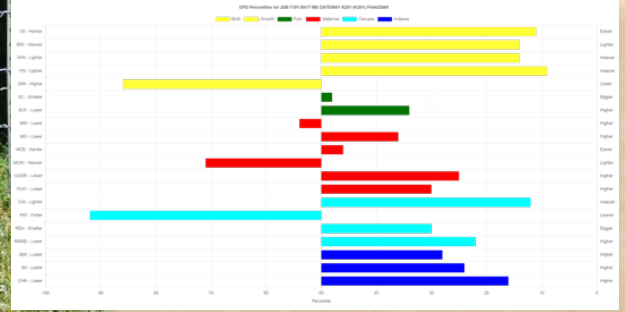
CED	BW	WW	YW	DMI	SC	SCF	MM	MG	MCE
-0.4	4.9	70	118	0.6	1.4	10.9	28	63	-0.1
MCW	UDDR	TEAT	CW	FAT	REA	MARB	BMI\$	BIIS	CHBS
95	1.4	1.4	83	-0.018	0.63	0.17	293	378	143

- H127** is a daughter out of one of our past donor cows **A341 (Trust x Dominette 507P)**. Easy keeping female with plenty of milk to raise good calves.
- She had a heifer calf **Lot 22A (M413)** by **EXR Generator** born 8/31/24, BW 65.
- Multiple Traits top 10%: WW, YW, UDDR, FAT



FALL DIVISION

JDB F391 B417 MS GATEWAY K201
LOT 24



JDB F391 B417 MS GATEWAY K201 DBP

44432669 DOB: 8/27/2022 Tattoo: K201 P

JDH VICTOR 719T 33Z ET

KCF BENNETT GATEWAY F391
43982934

KCF MISS TRUST C132

JDB GHCC 122L OUTLOOK W110 ET

JDB X027 LADY B417

43585845

JDB U035 LADY DOMINO Y106

TH 122 711 VICTOR 719T

JDH MS YANKEE 11U ET

NJW 735 M326 TRUST 100W ET

KCF MISS REVOLUTION X374

REMITALL ONLINE 122L

JDB GHCC LADY LEGEND P098

JDB 774 DOMINO U035

JDB B1 LADY ADVANCE R125

CED	BW	WW	YW	DMI	SC	SCF	MM	MG	MCE
8.9	0.8	65	109	0.6	1	19.2	26	58	1.9
MCW	UDDR	TEAT	CW	FAT	REA	MARB	BMI\$	BIIS	CHBS
97	1.3	1.3	83	0.062	0.55	0.22	406	497	138



- This first calf heifer is a solid female and is doing a great job with her bull calf Lot 24A (M416) by Birdwell Long Run 7098 1665 born 9/3/24 with a BW of 68. A direct daughter of KCF Bennett Gateway F391, you will want more like her when you put your eyes on K201. Big hiped, deep bodied and super sound. For a first calf heifer she has plenty of milk.
- Be sure to mark your catalog to find her sale day.



JDB F391 D062 MS GATEWAY K208 DBP

44433017 DOB: 9/8/2022 Tattoo: k208 P

JDH VICTOR 719T 33Z ET

KCF BENNETT GATEWAY F391
43982934

KCF MISS TRUST C132

JDB 719T K077 BRUNO A008 ET

JDB A008 C139 VICTRA D062

43771772

JDB Z007 A004 REVA C139

TH 122 711 VICTOR 719T

JDH MS YANKEE 11U ET

NJW 735 M326 TRUST 100W ET

KCF MISS REVOLUTION X374

TH 122 711 VICTOR 719T

HUTH 2D PROSPECTA K077

JDB T-BONE 4R REVOLUTION Z007

JDB 9050 Y027 RACHAEL A004 ET

CED	BW	WW	YW	DMI	SC	SCF	MM	MG	MCE
4.9	1.7	67	108	0.4	1.3	19.8	26	60	-1.4
MCW	UDDR	TEAT	CW	FAT	REA	MARB	BMI\$	BIIS	CHBS
113	1.4	1.5	87	-0.028	0.69	0.08	429	510	143



- A good KCF Bennett Gateway F391 daughter to provide carcass traits for your herd.
- Sells with a Birdwell Long Run 7098 1665 bull calf Lot 25A (M420) born 9/3/24 with a BW of 64.



Pictures were always important to our dad. We each were given a show halter to hold at a young age, and we are so grateful that it is well documented.

FALL DIVISION



JDB 192F H131 ROCKETTE K223 DBP

44420951 DOB: 10/11/2022 Tattoo: k223 P

KCF BENNETT ENCORE Z311 ET

JDB LILAC Z311 951B ROCK 192F

43948330

LILAC MARTHA R117 951B

JDB 6964 Y020 RING LEADER E040

JDB E040 C562 MISS LEADER H131

44291243

JDB Z303 A315 SADIE C562

SCHU-LAR ON TARGET 225
KCF MISS REVOLUTION X338 ET
SHF RIB EYE M326 R117
LILAC MARTHA X46 864Z
R LEADER 6964
JDB 4R REVA Y020

KCF BENNETT STRATEGY Z303 ET
JDB 70X INDEX GALA315

CED	BW	WW	YW	DMI	SC	SCF	MM	MG	MCE
6.4	1.7	53	77	-0.1	1.2	15.8	21	48	2.7
MCW	UDDR	TEAT	CW	FAT	REA	MARB	BMI\$	BIIS	CHBS
98	1.4	1.4	71	0.002	0.4	0.33	367	450	145



- K223 an own daughter of our JDB LILAC Z311 951B Rock 192F herd sire.
- Sells with a Birdwell Long Run 7098 1665 heifer calf Lot 26A (M419) born 9/7/24 with a BW 68.



JDB G507 E020 HOME GIRL J150 DBP

44324169 DOB: 10/25/2021 Tattoo: J150 P

KCF BENNETT HOMEWARD C776

KCF BENNETT C776 G507

44105217

KCF MISS REVOLUTION Y68

JDB W017 Y155 BELLIS B427

JDB B427 A304 LADY BELLE E020

43778102

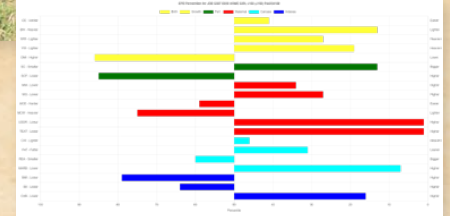
JDB X46 DOMINETTE A304

NJW 73S W18 HOMETOWN 10Y ET
KCF MISS 22S Z301 ET
MSU TCF REVOLUTION 4R
KCF MISS PROFICIENT U227
JDB GHCC 3008 REASON W017 ET
JDB 9126J BERNICE R071 Y155 ET

JDB 774 DOMINO U035
JDB T011 MISS DOMINO W054

CED	BW	WW	YW	DMI	SC	SCF	MM	MG	MCE
4.1	0.7	61	102	0.6	1.4	13	29	59	0.7
MCW	UDDR	TEAT	CW	FAT	REA	MARB	BMI\$	BIIS	CHBS
102	1.7	1.7	71	0.012	0.41	0.37	313	405	138

- J150 has freckles and pigment to add to your herd. Another nice KCF Bennett C776 G507 daughter that is good on her feet and legs, balanced and a good milker.
- She sells with a bull calf Lot 27A (M410) by Churchill Red Thunder 133J ET born 8/29/24 with a BW of 67.



JDB B427 413B LADY BELL J13 DBP

44301153 DOB: 2/16/2021 Tattoo: J13 P

JDB GHCC 3008 REASON W017 ET

JDB W017 Y155 BELLIS B427

43585854

JDB 9126J BERNICE R071 Y155 ET

FTF PROSPECTOR 145Y

FTF MS PROSPECTOR 413B

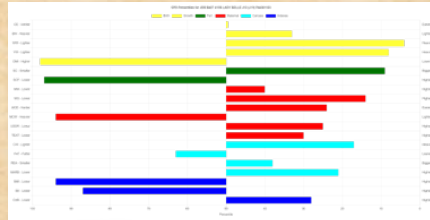
4349336

FTF MISS REVOLUTION 102Y

RRR MR FELT 3008
JDB GHCC LADY LEGEND P098
CL 1 DOMINO 9126J 1ET
JDB H33 BERNICE R071
HUTH PROSPECTOR K085
FTF CHICK A BOOM 7227T
MSU TCF REVOLUTION 4R
FTF TOUCH OF CLASS 875U

CED	BW	WW	YW	DMI	SC	SCF	MM	MG	MCE
3.3	2	71	110	0.9	1.5	10.2	28	64	3.7
MCW	UDDR	TEAT	CW	FAT	REA	MARB	BMI\$	BIIS	CHBS
116	1.3	1.2	80	0.032	0.5	0.23	271	365	128

- J13 is a solid young female. A maternal sister to Lot 3. She has a picture perfect udder.
- She sells with a Churchill Red Thunder 133J ET bull calf Lot 28A (M402) born on 8/27/24 with a BW of 64.
- Multiple Traits top 10%: WW, YW, SC



FALL DIVISION

JDB 128J A304 MISS L304
LOT 29A



JDB 128J A304 MISS L304

44523192 DOB: 9/6/2023 Tattoo: L304 P

DM ALL AROUND 904G ET

CHURCHILL KINGDOM 128J ET
44267937 BR VALIDATED B413 6035 7098

JDB 774 DOMINO U035

JDB X46 DOMINETTE A304
43457872 JDB T011 MISS DOMINO W054

LCX PERFECTO 11B ET
DM L1 DOMINETTE 301 ET
EFBEEF BR VALIDATED B413
BR BENNETT 4R Y428 2101 6035
FELTONS DOMINO 774
JDB L92 LADY SOPRANO P002
JDB 774 DOMINO T011
JDB N037 MISS ADVANCE T073

CED	BW	VW	YW	DMI	SC	SCF	MM	MG	MCE
6.2	1.7	60	92	0.5	1.5	15.5	30	60	5.9
MCW	UDDR	TEAT	CW	FAT	REA	MARB	BMI\$	BIIS	CHBS
85	1.4	1.3	64	0.052	0.49	0.33	338	429	120

• **L304** has been the other favorite out of the fall heifer pen. Her mother is one of the best mature, **Boomer Domino X46** daughters still producing each year. You've seen her in our sale ads. Big hiped, big bodied and front end that ties nicely in the top of her shoulder. Just like her paternal sister, **L303**, she has taken a growth spurt. But she has tons of potential.



JDB 128J 14A MISS L303 HYP,DBP

44523189 DOB: 9/5/2023 Tattoo: L303 P

DM ALL AROUND 904G ET

CHURCHILL KINGDOM 128J ET
44267937 BR VALIDATED B413 6035 7098

JDB 7176 JOHN WAYNE X027

CLF X027 MISSOURI SKY 14A
43372493 CLF BENNETT HENRIETTE 13W

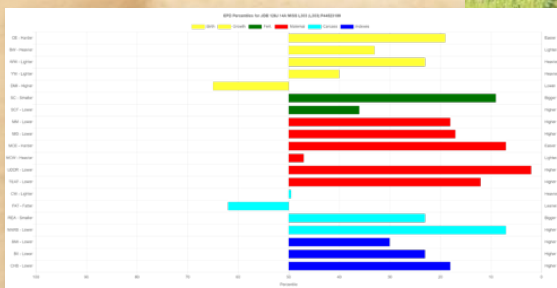
LCX PERFECTO 11B ET
DM L1 DOMINETTE 301 ET
EFBEEF BR VALIDATED B413
BR BENNETT 4R Y428 2101 6035
KT JOHN WAYNE 7167
JDB M11 TREBLE LADY P017
WHF BENNETT KEY 78T
CLF MS HENERITTA LEGEND 12T

CED	BW	VW	YW	DMI	SC	SCF	MM	MG	MCE
7.2	2	61	92	0.4	1.4	18.7	32	63	6.1
MCW	UDDR	TEAT	CW	FAT	REA	MARB	BMI\$	BIIS	CHBS
89	1.5	1.4	70	0.032	0.59	0.35	401	495	135

• **L303**, a daughter of **Churchill Kingdom 128J ET** out of a **JDB 7176 John Wayne X027** daughter. The **John Wayne** females were some of the best producing cows in the herd. **L303** is dark red in color, long spined and deep sided. In the last three months, **L303** has taken a growth spurt. When her body catches up with her skeletal growth, you will be happy with this individual.

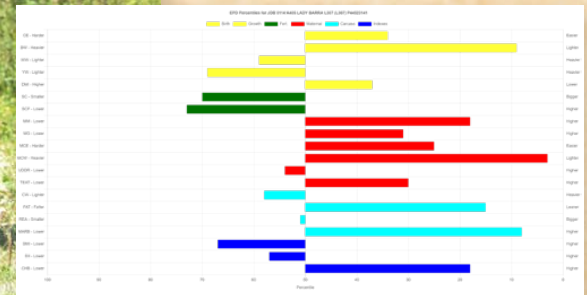


JDB 128J 14A MISS L303
LOT 29B



FALL DIVISION

JDB 0114 A405 LADY BARRA L307
LOT 30A



JDB 0114 A405 LADY BARRA L307 DBP

44523141 DOB: 9/7/2023 Tattoo: L307 P

BEHM 100W CUDA 504C

C BARRACUDA 0114 ET

44122941

C 105Y LADY DOMINO 4038

BOYD MASTERPIECE 0220

JDB 0220 MASTERETTE A405 ET

43458600

STAR ONLINIA DOMINETTE 507P ET

NJW 735 M326 TRUST 100W ET

BEHM R294 JASMAN102Y

CL 1 DOMINO 105Y

C 88X NOTICE ME 1311 ET

SHF RIB EYE M326 R117

SSF P606 MS VICTOR 803

REMITALL ONLINE 122L

RB L1 DOMINETTE 4059

CED	BW	WW	YW	DMI	SC	SCF	MM	MG	MCE
5.3	0.2	53	82	0.2	0.8	14.5	32	58	3.6
MCW	UDDR	TEAT	CW	FAT	REA	MARB	BMI\$	BIIS	CHBS
47	1.2	1.3	68	0.002	0.43	0.34	334	417	136

• The other choice of the **C Barracuda 0114** sisters. Out of a **Masterpiece** x **Online** female, **L307**, is more refined in her phenotype. She provides quality to add to your heifer pen.



JDB 0114 C121 LADY BARRA L305 DBP

44523136 DOB: 9/6/2023 Tattoo: L305 P

BEHM 100W CUDA 504C

C BARRACUDA 0114 ET

44122941

C 105Y LADY DOMINO 4038

KCF BENNETT 9126J S100

JDB S100 Y020 DOMINETTE C121

43706820

JDB 4R REVA Y020

NJW 735 M326 TRUST 100W ET

BEHM R294 JASMAN102Y

CL 1 DOMINO 105Y

C 88X NOTICE ME 1311 ET

CL 1 DOMINO 9126J 1ET

KCF MISS 3008 N68

MSU TCF REVOLUTION 4R

JDB 745 VICKY LYN L60

CED	BW	WW	YW	DMI	SC	SCF	MM	MG	MCE
12.8	-2.4	47	73	0.1	1	12.9	28	51	6
MCW	UDDR	TEAT	CW	FAT	REA	MARB	BMI\$	BIIS	CHBS
55	1.5	1.6	62	0.022	0.33	0.41	306	388	136

• One of Kevin's favorites in the sale. It was hard to offer her up but you get the choice between her and paternal sister **L307**. **L305** has the combination of old and new pedigrees to make a really cool female prospect. She could be developed into a front pasture female. Long bodied, big hipped and big footed. She is more production made, so might not make the show ring. Take extra time studying her.

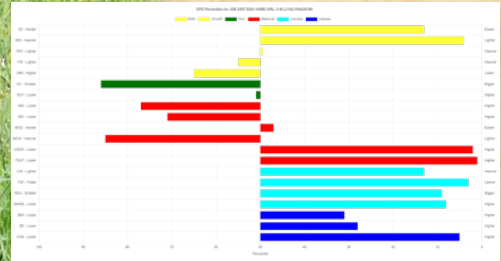
• Multiple Traits top 10%: CE, BW, MCE, MCW, UDDR, TEAT, MARB

JDB 0114 C121 LADY BARRA L305
LOT 30B



FALL DIVISION

JDB G507 E003 HOME GIRL J143
LOT 31



JDB G507 E003 HOME GIRL J143 DLE,HYE, IEF,MSUDF

44324166 DOB: 10/18/2021 Tattoo: J143 P

KCF BENNETT HOMEWARD C776

KCF BENNETT C776 G507

44105217

KCF MISS REVOLUTION Y68

JDB 743 25W ON TIME Z214 ET

JDB B41 Z081 SASSY E003

43787521

JDB S109 MISS ADVANCE Z081 ET

NJW 73S W18 HOMETOWN 10Y ET

KCF MISS 22S Z301 ET

MSU TCF REVOLUTION 4R

KCF MISS PROFICIENT U227

CRR ABOUTTIME 743

STAR KKH SSF KEYSHONA 25W ET

GO 3196 ADVANCE S109

JDB H33 BERNICE R071

CED	BW	WW	YW	DMI	SC	SCF	MM	MG	MCE
8.4	-0.9	56	87	0.4	0.6	17.1	22	50	1.7
MCW	UDDR	TEAT	CW	FAT	REA	MARB	BMI\$	BIIS	CHBS
107	1.5	1.6	82	-0.018	0.74	0.33	395	481	157



- J143 is backed by a pedigree that has maternal emphasis. Once you study her, you will see she is a very complete KCF Bennett C776 G507 female and goes back to GO 3196 Advance S109 who is known for producing efficient females. If you are looking to add a young cow to your herd to improve carcass quality look her up on sale day.
- She sells with a heifer calf Lot 31A (M422) by EXR Generator 0333.
- Multiple Traits top 10%: BW, UDDR, TEAT, FAT, REA, MARB, CHB



JDB 504C 1735 MISS CUDA J123 DLE,HYE, IEF,MSUDF

44346351 DOB: 9/7/2021 Tattoo: J123 P

NJW 73S M326 TRUST 100W ET

BEHM 100W CUDA 504C

43636764

BEHM R294 JASMAN 102Y

UPS SENSATION 2504 ET

RH SADDIE 1735

43835057

RH DARLA 1528

KCF BENNETT 3008 M326

NJW P606 72N DAYDREAM 73S

KCF BENNETT 9126J R294

CPH MS WRANGLER 1W

CHURCHILL SENSATION 028X

NJW BW LADYSPORT DEW 78P ET

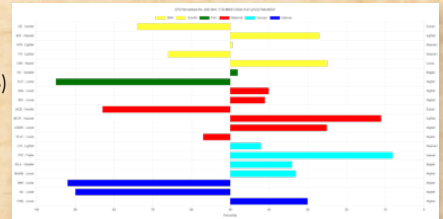
LJR MSU 165L DALTON 144X

RH JESSICA 127R

CED	BW	WW	YW	DMI	SC	SCF	MM	MG	MCE
0.7	1.7	57	84	0.1	1	11.7	29	57	-1.3
MCW	UDDR	TEAT	CW	FAT	REA	MARB	BMI\$	BIIS	CHBS
69	1.3	1.2	72	-0.008	0.52	0.17	294	366	127



- A good BEHM 100W Cuda 504C three-year-old female. Moderate, sound and balanced.
- She sells with a bull calf Lot 32A (M424) by Churchill Red Thunder 133J born on 9/12/24, BW 65.



JDB 504C B409 MISS CUDA J116 DLE,HYE, IEF,MSUDF

44346361 DOB: 9/2/2021 Tattoo: J116 P

NJW 73S M326 TRUST 100W ET

BEHM 100W CUDA 504C

43636764

BEHM R294 JASMAN 102Y

JDB GHCC 3008 REASON W017 ET

JDB W112 LADY ENTOURAGE B409

43585665

JDB N041 ANNA LEE W042

KCF BENNETT 3008 M326

NJW P606 72N DAYDREAM 73S

KCF BENNETT 9126J R294

CPH MS WRANGLER 1W

RRH MR FELT 3008

JDB GHCC LADY LEGEND P098

JDB 154 WILLIAMS N041

JDB P606 VICTRA BOOMER S036

CED	BW	WW	YW	DMI	SC	SCF	MM	MG	MCE
6.5	1.1	61	92	0.1	1	10.2	35	65	1.6
MCW	UDDR	TEAT	CW	FAT	REA	MARB	BMI\$	BIIS	CHBS
54	1.4	1.5	63	0.032	0.47	0.34	271	359	131



- J116 is a big ribbed and sound three-year-old BEHM 100W Cuda 504C daughter.
- She will calve before sale day to Churchill Red Thunder 133J.



FALL DIVISION



JDB C555 C139 MISS TRUST H122

44291247 DOB: 11/7/2020 Tattoo: H122 P

NJW 73S M326 TRUST 100W ET
JDB 100W 507P TRUST C555 ET
 43756378 STAR ONLINA DOMINETTE 507P ET

JDB T-BONE 4R REVOLUTION Z007
JDB 2007 A004 REVA C139
 43756372 JDB 9050 Y027 RACHAEL A004 ET

KCF BENNETT 3008 M326
 NJW P606 72N DAYDREAM 73S
 REMITALL ONLINE 122L
 RB L1 DOMINETTE 4059
 MSU TCF REVOLUTION 4R
 JDB 7176 HOLLY X023
 BOYD WORLDWIDE 9050 ET
 JDB 4R REVA Y027

CED	BW	WW	YW	DMI	SC	SCF	MM	MG	MCE
4.5	1.5	61	102	0.4	1.4	12.7	21	51	-0.3
MCW	UDDR	TEAT	CW	FAT	REA	MARB	BMI\$	BIIS	CHBS
97	1.5	1.4	80	0.012	0.74	0.14	315	390	135

- A youthful female that is long bodied, correct on her feet and legs. The **JDB 100W 507P Trust C555 ET** bull has made some nice cows and we have a number of them still producing in the herd.
- Selling along side H122 is a heifer calf **Lot 34A (M405)** by **EXR Generator** born 8/29/24 with a BW of 64.



JDB B427 X125 LADY BELLE G942 HYP

44298444 DOB: 12/10/2019 Tattoo: G942 P

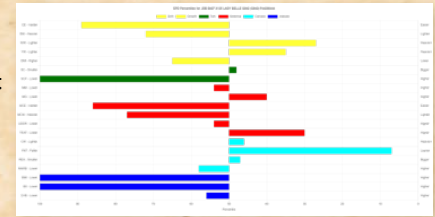
JDB GHCC 3008 REASON W017 ET
JDB W017 Y155 BELLIS B427
 43585854 JDB 9126J BERNICE R071 Y155 ET

STAR OBF BOGART 5L
JDB 5L LADY BOGART X125
 43158741 JDB K47 LADY EAGLE N001

RRH MR FELT 3008
 JDB GHCC LADY LEGEND P098
 CL 1 DOMINO 9126J 1ET
 JDB H33 BERNICE R071
 CS BOOMER 29F
 NJW 1Y LARIAT 41E
 JDB 504 EAGLE K47
 JDB MELODY A31 E69

CED	BW	WW	YW	DMI	SC	SCF	MM	MG	MCE
-2.1	3.7	61	95	0.4	1	6.8	27	57	-1.8
MCW	UDDR	TEAT	CW	FAT	REA	MARB	BMI\$	BIIS	CHBS
102	1.2	1.3	71	-0.008	0.46	0.09	214	283	114

- Another solid **JDB W017 Y155 Bellis B427** daughter complete in her phenotype.
- She will calve by sale date to **KCF Bennett C776 G507** our senior herd sire.



JDB B427 B024 LADY BELLE G911 DBP

44225373 DOB: 11/16/2019 Tattoo: G911 H

JDB GHCC 3008 REASON W017 ET
JDB W017 Y155 BELLIS B427
 43585854 JDB 9126J BERNICE R071 Y155 ET

JDB T-BONE 4R REVOLUTION Z007
JDB 2007 Y180 REVA B024
 43817759 JDB W017 LADY REASON Y180

RRH MR FELT 3008
 JDB GHCC LADY LEGEND P098
 CL 1 DOMINO 9126J 1ET
 JDB H33 BERNICE R071
 MSU TCF REVOLUTION 4R
 JDB 7176 HOLLY X023
 JDB GHCC 3008 REASON W017 ET
 JDB S027 LADY WIZ U060

CED	BW	WW	YW	DMI	SC	SCF	MM	MG	MCE
3.4	2.1	72	113	1	1.4	12.9	28	63	2.1
MCW	UDDR	TEAT	CW	FAT	REA	MARB	BMI\$	BIIS	CHBS
105	1.4	1.4	81	0.012	0.48	0.21	305	397	127

- A nice **JDB W017 Y155 Bellis B427** daughter, easy keeping and deep bodied.
- Due close to sale day to **KCF Bennett C776 G507**.
- Multiple Traits top 10%: WW, YW, UDDR



JDB B427 E739 LADY BELLE G928

44225402 DOB: 12/20/2019 Tattoo: G928 P

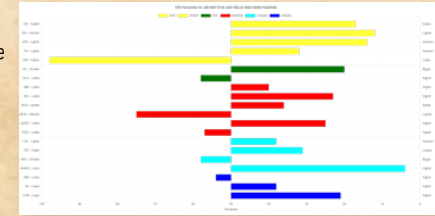
JDB GHCC 3008 REASON W017 ET
JDB W017 Y155 BELLIS B427
 43585854 JDB 9126J BERNICE R071 Y155 ET

EFBEEF TFL U208 TESTED X651 ET
JDB X651 Z255 MISS TESTED E739
 43870939 COFO MS DUCHESS LEGEND D738

RRH MR FELT 3008
 JDB GHCC LADY LEGEND P098
 CL 1 DOMINO 9126J 1ET
 JDB H33 BERNICE R071
 EFBEEF FOREMOST U208
 EFBEEF P606 MABEL R415
 EFBEEF TFL U208 TESTED X651 ET
 COFO MS LEGEND 113X

CED	BW	WW	YW	DMI	SC	SCF	MM	MG	MCE
7.3	0.6	65	96	0.9	1.3	15.8	28	61	2.5
MCW	UDDR	TEAT	CW	FAT	REA	MARB	BMI\$	BIIS	CHBS
100	1.3	1.2	73	0.012	0.41	0.43	349	451	134

- A good moderate female.
- She will calve before the sale date to **BAR JZ On Demand**. We are excited to see what this bull can do for our program.



JDB B427 A011 LADY BELLE G059 DLF,HYE,IEF,MSUDF

44107337 DOB: 6/2/2019 Tattoo: G059 P

JDB GHCC 3008 REASON W017 ET
JDB W017 Y155 BELLIS B427
 43585854 JDB 9126J BERNICE R071 Y155 ET

JDB 774 DOMINO U035
JDB 408 X003 LADY HARLAND A011
 43705421 JDB H33 BERNICE X003

RRH MR FELT 3008
 JDB GHCC LADY LEGEND P098
 CL 1 DOMINO 9126J 1ET
 JDB H33 BERNICE R071
 FELTONS DOMINO 774
 JDB L92 LADY SOPRANO P002
 JDB 517 STEWART H33
 JDB 434 MAGGIE R103

CED	BW	WW	YW	DMI	SC	SCF	MM	MG	MCE
4.2	1.5	54	78	0.6	0.8	4.9	23	51	-2.9
MCW	UDDR	TEAT	CW	FAT	REA	MARB	BMI\$	BIIS	CHBS
82	1.1	1.2	64	0.032	0.17	0.19	161	231	98

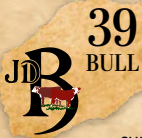


- A solid female out of our fall division. Her sire comes from our two foundation cow families, **JDB Lady Legend** and **JDB Lady Boom**.
- She will have a **JDB Turn Key X53 A31, Lot 38A** bull calf at side, **M417** 9/4/24 BW 74.



BULLS

JDB 36E F087 LONG HAUL L016
LOT 39



JDB 36E F087 LONG HAUL L016 MDE, DBF

44446129 DOB: 3/4/2023 Tattoo: L016 P

CHURCHILL SENSATION 028X

NJW LONG HAUL 36E ET

43829326 NJW 79Z 10W RITA 11B

JDB W017 Y155 BELLIS B427

JDB B427 D650 LADY BELLE F087

43928973 JDB W017 U066 LADY REASON D650

UPS DOMINO 3027

CHURCHILL LADY 7202T ET

LJR 023R WHITMORE 10W

BW 91H 100W RITA 79Z ET

JDB GHCC 3008 REASON W017 ET

JDB 9126J BERNICE R071 Y155 ET

JDB GHCC 3008 REASON W017 ET

JDB N087 MISS OLATHA U066



CED	BW	WW	YW	DMI	SC	SCF	MM	MG	MCE
7.6	0	61	94	0.3	1.6	18.8	37	67	3.3
MCW	UDDR	TEAT	CW	FAT	REA	MARB	BMS	BIIS	CHBS
85	1.4	1.5	69	-0.008	0.39	0.16	392	474	122

- Strong maternal traits coupled with solid growth.
- **L016** would work in both seedstock and commercial herds.
- Multiple Traits top 10%: BW, SC, MM, MG, UDDR, TEAT, FAT



JDB 81E 90IG HISTORIC L004 DBP

44447195 DOB: 3/1/2023 Tattoo: L004 S

CHURCHILL SENSATION 028X

NJW 160B 028X HISTORIC 81E ET

43829334 NJW 73S 38W DAYDREAM 160B

FTF PRIME PRODUCT 226Z

FTF PRIMETIME MISS 901G

43990270 FTF MS PROSPECTOR 413B

UPS DOMINO 3027

CHURCHILL LADY 7202T ET

NJW 76S P20 BEEF 38W ET

NJW P606 72N DAYDREAM 73S

SHF RIB EYE M326 R117

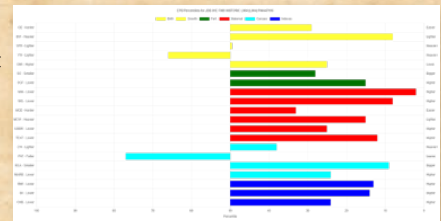
FTF CLASSIC MISS 0206X

FTF PROSPECTOR 145Y

FTF MISS REVOLUTION 102Y

CED	BW	WW	YW	DMI	SC	SCF	MM	MG	MCE
5.7	0	56	84	0.1	1.2	21	39	67	2.7
MCW	UDDR	TEAT	CW	FAT	REA	MARB	BMS	BIIS	CHBS
72	1.3	1.4	73	0.042	0.72	0.21	438	519	131

- Numbers wise, he's a standout for the dollar indexes and carcass traits as well as the top 9% for Ribeye. He's right on target for Milk, and a breed leader for Birth Weight. **L004** is scurred.
- His dam sells as **Lot 3**.
- Multiple Traits top 10%: BW, MM, MG, UDDR, REA



LiveAuctions.TV

CREATE AN ACCOUNT

Click "Register to Bid" on the top right corner of LiveAuctions.tv.

Fill out the required information to bid online.

Agree to the terms of service and finish with the "register" button.

REGISTER FOR A BUYER NUMBER

From the home page or the "all auctions" page, choose the sale you're interested in.

Once selected, click the "request a buyer number" button.

Verify your email address with the email verification link. To verify your mobile number, click "send token". Follow the steps to authorize your mobile device and click "submit".

BID SUCCESSFULLY

You will only have to complete the two-step verification process one time. After that, you will be able to immediately request a buyer number on any auction without verification. If you're a winning bidder, your lots will appear in your cart on the bottom of your screen. You will be contacted by the ranch or sale manager for your payment and shipping plans.

If you need help registering to bid or to view the auction please contact technical support.

(682) 816-4900 OR TechSupport@LiveAuctions.tv.

BULLS



JDB 81E F089 HISTORIC L005^{DBP}

44506005 DOB: 3/1/2023 Tattoo: L005 H

CHURCHILL SENSATION 028X
NJW 160B 028X HISTORIC 81E ET
 43829334 NJW 73S 38W DAYDREAM 160B

JDB W017 Y155 BELLIS B427

JDB B427 A348 LADY BELLE F089
 43949436 JDB 300W SUGAR POP A348

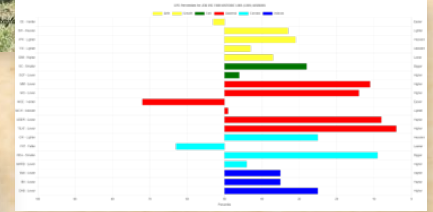
UPS DOMINO 3027
 CHURCHILL LADY 7202T ET
 NJW 76S P20 BEEF 38W ET
 NJW P606 72N DAYDREAM 73S
 JDB GHCC 3008 REASON W017 ET
 JDB 9126J BERNICE R071 Y155 ET
 STAR TCF LOCK-N-LOAD 300W ET
 STAR SJS ON DOMARK 508U ET

CED	BW	WW	YW	DMI	SC	SCF	MM	MG	MCE
3	2	60	92	0.2	1.2	17.3	34	64	-0.4
MCW	UDDR	TEAT	CW	FAT	REA	MARB	BMI\$	BIIS	CHBS
89	1.4	1.4	77	0.032	0.72	0.13	385	461	130

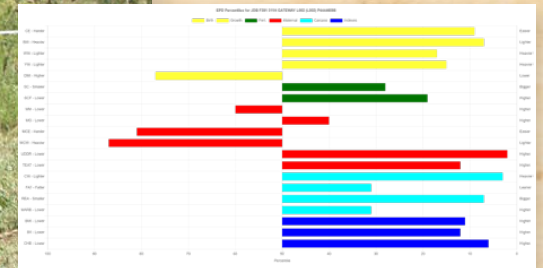


- L005 is a solid, horned **NJW 160B 028X Historic 81E ET** son that packs a lot of muscle, sound structured and big boned.
- Multiple Traits top 10%: UDDR, TEAT, REA

JDB 81E F089 HISTORIC L005
 LOT 41



JDB F391 311H GATEWAY L002
 LOT 42



JDB F391 311H GATEWAY L002^{MDP,DBP}

44446098 DOB: 2/26/2023 Tattoo: L002 H

JDH VICTOR 719T 33Z ET
KCF BENNETT GATEWAY F391
 43982934 KCF MISS TRUST C132

JDB 100W 507P TRUST C555 ET

WIRTHMOR C555 HAILEY B 311H
 44124785 TD WONDERFUL SURPRISE

TH 122 711 VICTOR 719T
 JDH MS YANKEE 11U ET
 NJW 73S M326 TRUST 100W ET
 KCF MISS REVOLUTION X374
 NJW 73S M326 TRUST 100W ET
 STAR ONLINIA DOMINETTE 507P ET
 NF WHAT A WONDER 15B
 TD SURPRISE XU11

CED	BW	WW	YW	DMI	SC	SCF	MM	MG	MCE
9.5	0	64	104	0.5	1.2	21	26	58	-1.1
MCW	UDDR	TEAT	CW	FAT	REA	MARB	BMI\$	BIIS	CHBS
107	1.5	1.4	94	0.012	0.77	0.18	452	539	155



- L002 is horned and a major breed improver for 16 of the 20 EPD traits and in the top 10% for six of those traits.
- Multiple Traits top 10%: CE, BW, UDDR, CW, REA, CHB



JDB G507 F811 HOMEWARD L024^{DBP}

44497697 DOB: 3/20/2023 Tattoo: L024 P

KCF BENNETT HOMEWARD C776
KCF BENNETT C776 G507
 44105217 KCF MISS REVOLUTION Y68

KCF BENNETT ENCORE Z311 ET

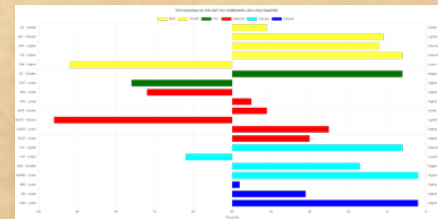
JDB Z311 B024 MISS ENCORE F811
 44291248 JDB Z007 Y180 REVA B024

NJW 73S W18 HOMETOWN 10Y ET
 KCF MISS 22S Z301 ET
 MSU TCF REVOLUTION 4R
 SCHU-LAR ON TARGET 22S
 KCF MISS REVOLUTION X338 ET
 JDB T-BONE 4R REVOLUTION Z007
 JDB W017 LADY REASON Y180

CED	BW	WW	YW	DMI	SC	SCF	MM	MG	MCE
4.3	0.5	66	112	0.7	1.7	14.5	24	56	2.3
MCW	UDDR	TEAT	CW	FAT	REA	MARB	BMI\$	BIIS	CHBS
121	1.3	1.3	88	0.042	0.64	0.53	365	473	175



- A low birth weight bull with breed leading growth and carcass quality is a powerful combination in this potential herd sire.
- Multiple Traits top 10%: YW, SC, CW, MARB, CHB



REFERENCE SIREs



NJW LONG HAUL 36E ET

43829326 DOB: 2/2/2017 Tattoo: 36E P

UPS DOMINO 3027
CHURCHILL SENSATION 028X
 43092364 CHURCHILL LADY 7202T ET

LJR 023R WHITMORE 10W
NJW 79Z 10W RITA 11B
 43483038 BW 91H 100W RITA 79Z ET

CL 1 DOMINO 9126J 1ET
 UPS MISS DIAMOND 1353
 GH RAMBO 279R
 CL 1 DOMINETTE 301N
 KJ C&L J119 LOGIC 023R ET
 LJR MICKEY 278N
 NJW 73S M326 TRUST 100W ET
 REMITALL RITA 91H

CED	BW	WW	YW	DMI	SC	SCF	MM	MG	MCE
9.9	-0.8	63	99	-0.1	2.1	27.2	45	77	5
MCW	UDDR	TEAT	CW	FAT	REA	MARB	BMI\$	BII	CHB\$
71	1.3	1.4	66	-0.018	0.5	0.05	520	602	119



NJW LONG HAUL 36E ET



C BARRACUDA 0114 ET

44122941 DOB: 1/8/2020 Tattoo: 114 P

NJW 73S M326 TRUST 100W ET
BEHM 100W CUDA 504C
 43636764 BEHM R294 JASMAN102Y

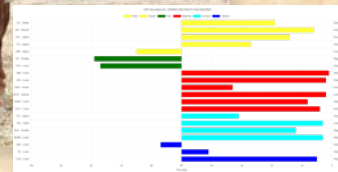
CL 1 DOMINO 105Y
C 105Y LADY DOMINO 4038
 43469644 C 88X NOTICE ME 1311 ET

KCF BENNETT 3008 M326
 NJW P606 72N DAYDREAM 73S
 KCF BENNETT 9126J R294
 CPH MS WRANGLER 1W
 CL 1 DOMINO 929W
 CL 1 DOMINETTE 9140W 1ET
 NJW 98S R117 RIBEYE 88X ET
 C NOTICE ME ET

CED	BW	WW	YW	DMI	SC	SCF	MM	MG	MCE
7.1	-0.4	65	98	0.4	0.7	14.1	41	73	2.9
MCW	UDDR	TEAT	CW	FAT	REA	MARB	BMI\$	BII	CHB\$
39	1.4	1.5	75	-0.018	0.69	0.46	349	449	160



C BARRACUDA 0114 ET



CHURCHILL KINGDOM 128J ET

44267937 DOB: 1/12/2021 Tattoo: 128J P

LCX PERFECTO 11B ET
DM ALL AROUND 904G ET
 44015527 DM L1 DOMINETTE 301 ET

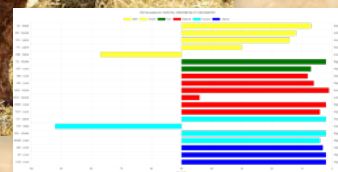
EFBEEF BR VALIDATED B413
BR VALIDATED B413 6035 7098
 43857421 BR BENNETT 4R Y428 2101 6035

NJW 98S R117 RIBEYE 88X ET
 WLL ZOEY 3Z
 CL 1 DOMINO 955W
 DM L1 DOMINETTE 901
 EFBEEF TFL U208 TESTED X651 ET
 EFBEEF 4R THYRA Y865
 KCF BENNETT REVOLUTION Y428
 BR BENNETT OF 4070 2101

CED	BW	WW	YW	DMI	SC	SCF	MM	MG	MCE
10.3	0.6	65	97	0.5	1.8	23.4	35	68	12.7
MCW	UDDR	TEAT	CW	FAT	REA	MARB	BMI\$	BII	CHB\$
87	1.5	1.5	95	0.062	0.92	0.45	503	610	175



CHURCHILL KINGDOM 128J ET



KCF BENNETT C776 G507

44105217 DOB: 9/23/2019 Tattoo: G507 P

NJW 73S W18 HOMETOWN 10Y ET
KCF BENNETT HOMEWARD C776
 43662613 KCF MISS 22S Z301 ET

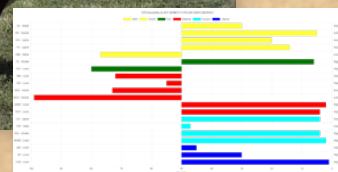
MSU TCF REVOLUTION 4R
KCF MISS REVOLUTION Y68
 43182291 KCF MISS PROFICIENT U227

SHF WONDER M326 W18 ET
 NJW P606 72N DAYDREAM 73S
 SCHU-LAR ON TARGET 22S
 KCF MISS REVOLUTION X338 ET
 FELTONS LEGEND 242
 MSU TCF RACHAEL ET 54N
 EFBEEF SCHU-LAR PROFICIENT N093
 KCF MISS 3008 N169

CED	BW	WW	YW	DMI	SC	SCF	MM	MG	MCE
5.6	-0.5	63	105	0.5	1.6	13.8	23	54	-0.4
MCW	UDDR	TEAT	CW	FAT	REA	MARB	BMI\$	BII	CHB\$
128	1.5	1.5	90	0.022	0.82	0.55	369	473	187



KCF BENNETT C776 G507
 [CHB]{DLF,HYE,IEF,MDF,MSUDF,DBP}



REFERENCE SIRES



EXR GENERATOR 0333 ET {DLE,HYE,IEF,MDF,MSUDE,DBF}

44196588 DOB: 11/1/2020 Tattoo: 333 P

NJW 79Z Z311 ENDURE 173D ET
LOEWEN GENESIS G16 ET
 43987463
 LOEWEN 77 48 MISS 344N 4RB42ET

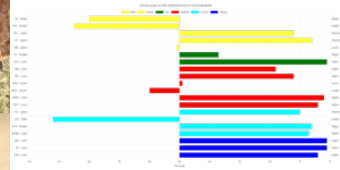
KCF BENNETT ENCORE Z311 ET
 BW 91H 100W RITA 79Z ET
 MSU TCF REVOLUTION 4R
 PCR JACKLYN NIKOLE 344N
 NJW 98S R117 RIBEYE 88X ET
 C NOTICE ME ET
 DM BR SOONER
 BR GABRIELLE 5082

C MILES MCKEE 2103 ET
C BAILEES MCKEE 4295 ET
 43487307
 BR BAILEE 1066 ET

CED	BW	WW	YW	DMI	SC	SCF	MM	MG	MCE
-0.3	4.5	66	112	0.3	1.1	28.1	32	65	1.6
MCW	UDDR	TEAT	CW	FAT	REA	MARB	BMS	BII	CHBS
94	1.5	1.5	84	0.062	0.78	0.36	563	669	163



EXR GENERATOR 0333 ET



PYRAMID DAYBREAK 9165 {CHB}{DLE,HYE,IEF,MDF,MSUDE,DBF}

44051992 DOB: 4/3/2019 Tattoo: 9165 P

SHF YORK 19H Y02
SHF DAYBREAK Y02 D287 ET
 43676330
 SHF MISS M326 T08 ET

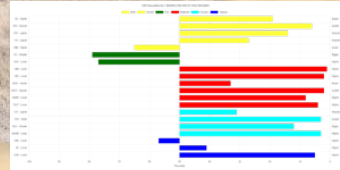
MSU MF HUDSON 19H
 LOEWEN MISS P20 10W
 KCF BENNETT 3008 M326
 SHF POSTIVE MISS 73C M15
 UPS DOMINO 3027
 FHF 408 RUBY 4X
 THR THOR 4029
 FHF 122L RENEE 46R ET

PYRAMID DOMINO 2014
FHF 2014 RENAE 175B
 43479182
 FHF 4029 RENAE 43Y

CED	BW	WW	YW	DMI	SC	SCF	MM	MG	MCE
9	0.3	63	98	0.4	1.8	21.2	35	66	5.9
MCW	UDDR	TEAT	CW	FAT	REA	MARB	BMS	BII	CHBS
116	1.3	1.2	85	0.062	0.8	0.19	451	538	141



PYRAMID DAYBREAK 9165



RV VALOR 9444G ET {CHB}{DLE,HYE,IEF,MDF,MSUDE,DBF}

44076080 DOB: 3/18/2019 Tattoo: 9444G P

TH 122 711 VICTOR 719T
JDH VICTOR 719T 33Z ET
 43294080
 JDH MS YANKEE 11U ET

DRF JWR PRINCE VICTOR 711
 KBCR 19D DOMINETTE 122
 AH YANKEE 10S
 JDH MS ISAACS 075 60N
 GO EXCEL L18
 OXH CHRISTI 0028
 HPH MAYNARD EXT 28G 216
 HPH MISS BASIS 742H 205

ECR L18 EXTRA DEEP 9279
RV BOBBI 1404
 43224967
 HPH MISS EPTENSION 205 404

CED	BW	WW	YW	DMI	SC	SCF	MM	MG	MCE
12.2	-1.1	59	90	0.2	1.1	22.8	24	53	1.1
MCW	UDDR	TEAT	CW	FAT	REA	MARB	BMS	BII	CHBS
92	1.6	1.7	103	0.052	0.75	0.31	496	588	178



RV VALOR 9444G ET



CHURCHILL RED THUNDER 133J ET {CHB}{DLE,HYE,IEF,MDF,MSUDE,DBF}

44267942 DOB: 1/12/2021 Tattoo: 133J P

LCX PERFECTO 11B ET
DM ALL AROUND 904G ET
 44015527
 DM L1 DOMINETTE 301 ET

NJW 98S R117 RIBEYE 88X ET
 WLL ZOEY 3Z
 CL 1 DOMINO 955W
 DM L1 DOMINETTE 901
 EFBEEF TFL U208 TESTED X651 ET
 EFBEEF 4R THYRA Y865
 KCF BENNETT REVOLUTION Y428
 BR BENNETT OF 4070 2101

EFBEEF BR VALIDATED B413
BR VALIDATED B413 6035 7098
 43857421
 BR BENNETT 4R Y428 2101 6035

CED	BW	WW	YW	DMI	SC	SCF	MM	MG	MCE
5.7	1.6	67	99	0.4	1.4	28.7	38	72	4
MCW	UDDR	TEAT	CW	FAT	REA	MARB	BMS	BII	CHBS
68	1.4	1.4	85	0.032	1.08	0.7	595	721	194



CHURCHILL RED THUNDER 133J ET



REFERENCE SIREs



BIRDWELL LONG RUN 7098 1665 ET {DLF,HYF,IEF,MDF,MSUDE,DBF}

44298368 DOB: 2/25/2021 Tattoo: 1665 P

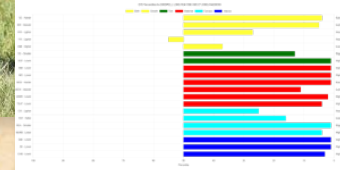
CHURCHILL SENSATION 028X
NJW LONG HAUL 36E ET
 43829326 NJW 79Z 10W RITA 11B
 EFBEEF BR VALIDATED B413
BR VALIDATED B413 6035 7098
 43857421 BR BENNETT 4R Y428 2101 6035

UPS DOMINO 3027
 CHURCHILL LADY 7202T ET
 LJR 023R WHITMORE 10W
 BW 91H 100W RITA 79Z ET
 EFBEEF TFL U208 TESTED X651 ET
 EFBEEF 4R THYRA Y865
 KCF BENNETT REVOLUTION Y428
 BR BENNETT OF 4070 2101

CED	BW	WW	YW	DMI	SC	SCF	MM	MG	MCE
11.8	-0.7	61	88	0.2	1.4	32.4	47	77	10.2
MCW	UDDR	TEAT	CW	FAT	REA	MARB	BMI\$	BII	CHBS\$
67	1.5	1.5	77	0.002	0.97	0.45	632	739	166



BIRDWELL LONG RUN 7098 1665 ET



BAR JZ ON DEMAND {DLF,HYF,IEF,MDF,MSUDE,DBF}

44355795 DOB: 3/26/2022 Tattoo: P

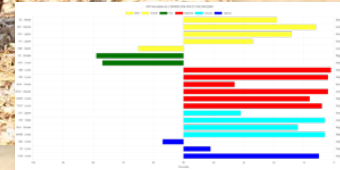
JDH VICTOR 719T 33Z ET
RV VALOR 9444G ET
 44076080 RV BOBBI 1404
 NJW 73S W18 HOMEGROWN 8Y ET
BAR JZ HANNAH 087B
 43479588 BAR JZ VIRGINIA 347Y

TH 122 711 VICTOR 719T
 JDH MS YANKEE 11U ET
 ECR L18 EXTRA DEEP 9279
 HPH MISS EPTENSION 205 404
 SHF WONDER M326 W18 ET
 NJW P606 72N DAYDREAM 73S
 TH 122 711 VICTOR 719T
 BAR JZ JULIE 074R

CED	BW	WW	YW	DMI	SC	SCF	MM	MG	MCE
12.9	1	69	110	0.6	1.5	20.5	31	65	3.3
MCW	UDDR	TEAT	CW	FAT	REA	MARB	BMI\$	BII	CHBS\$
98	1.5	1.5	95	0.032	0.59	0.23	443	538	157



BAR JZ ON DEMAND



JDB 167Y C510 TRUST K030 {DLF,HYF,IEF,MSUDE,DBF}

44394411 DOB: 3/7/2022 Tattoo: K030 P

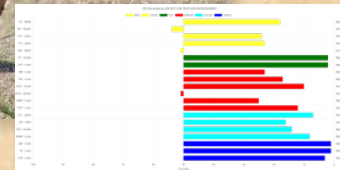
NJW 73S M326 TRUST 100W ET
NJW 33TB 100W TRUST 167Y
 43214415 BROOKVIEW 242 TEQUILA ROSE 33T
 JDB 719T K077 BRUNO A008 ET
JDB A008 A343 VICTRA C510
 43649454 JDB 3027 MISS DOMINO A343

KCF BENNETT 3008 M326
 NJW P606 72N DAYDREAM 73S
 FELTONS LEGEND 242
 BROOKVIEW M48 MIS RILEY ROSE
 TH 122 711 VICTOR 719T
 HUTH 2D PROSPECTA K077
 UPS DOMINO 3027
 JDB R105 LADY MAGNUM W018

CED	BW	WW	YW	DMI	SC	SCF	MM	MG	MCE
7.3	2.9	62	100	0.3	1.8	26.4	31	63	5.5
MCW	UDDR	TEAT	CW	FAT	REA	MARB	BMI\$	BII	CHBS\$
90	1.3	1.4	87	0.002	0.66	0.35	538	638	167



JDB 167Y C510 TRUST K030



JDB G595 C595 SOLUTION K214 {DBP}

44432651 DOB: 9/14/2022 Tattoo: K214 P

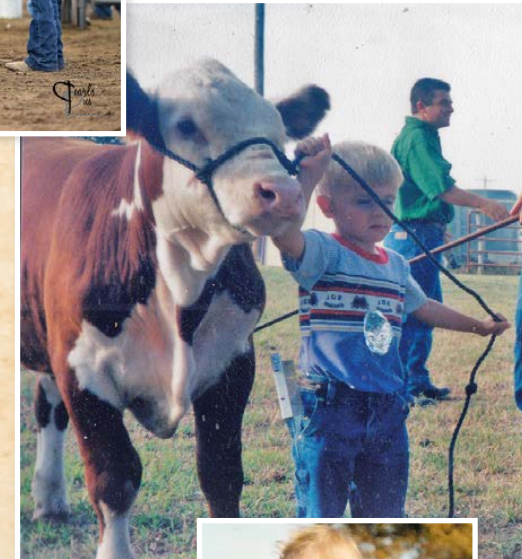
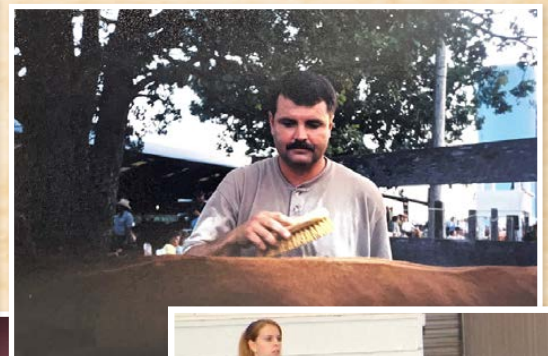
KCF BENNETT TRUST B279 ET
KCF BENNETT RESOLVE G595
 44105347 KCF MISS TESTED C422
 JDB T-BONE 4R REVOLUTION Z007
JDB Z007 S137 REVA C595
 43653299 JDB N037 MISS ADVANCE S137

NJW 73S M326 TRUST 100W ET
 KCF MISS REVOLUTION X374
 EFBEEF TFL U208 TESTED X651 ET
 KCF MISS X51 A407
 MSU TCF REVOLUTION 4R
 JDB 7176 HOLLY X023
 JDB 767G ADVANCE N037
 4S H87 ANN 4050

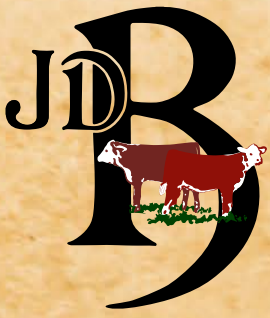
CED	BW	WW	YW	DMI	SC	SCF	MM	MG	MCE
4.8	0.7	68	104	0.5	1.2	18.6	27	62	1.3
MCW	UDDR	TEAT	CW	FAT	REA	MARB	BMI\$	BII	CHBS\$
90	1.5	1.5	98	0.052	1.05	0.3	431	527	168



JDB G595 C595 SOLUTION K214



The family photos taken for this catalog are extra special to us as they were taken on Feb. 17, just a few weeks before our dad's battle ended on March 2.



The Bellis Family
19264 Lawrence 2170,
Aurora, Mo 65605



JDB 6964 7539 JEWEL J50 - LOT 20



JDB F391 B417 MS GATEWAY K201 - LOT 24



JDB 128J A304 MISS L304 - LOT 29A



JDB 0114 C121 LADY BARRA L305 - LOT 30B



JDB 36E F087 LONG HAUL L016 - LOT 39



JDB 81E F089 HISTORIC L005 - LOT 41