

**SATURDAY, OCTOBER 12, 2024**  
**SNEDDEN RANCH ANNUAL BULL SALE**



**AT THE RANCH • MARICOPA, CALIFORNIA**



Dear Friends and Fellow Cattle Producers,

*We are honored that you have taken the time to consider this outstanding bull offering. We continue to select for genetics that will maximize your profit and optimize your time and inputs. We recognize that with the cost of employment and the multitude of tasks it takes to keep a ranch operating, a rancher's time is their most valuable asset. Ranchers don't need to be babysitting their herd. By running in an environment that is more challenging than most purebred operations throughout the country, we challenge our genetics to hold up in an environment that matches a commercial operation. Cattle must calve on their own unassisted, have udder quality that doesn't require assistance, have the mothering ability to protect and nurture her calf, calves must be born with some vigor, and have dispositions that allow for safe and efficient processing. All these traits translate into hours and even days that can be used to tackle other projects, maybe go to a kid's sporting event, or maybe even a rare day off for a rancher! Beyond the intangible traits that make a ranch more efficient, we stay committed to pushing your profits. This starts with fertility and ends with marketability. Your cash crop requires cows that calve every year, and bulls that hold up throughout multiple breeding seasons. A rancher's primary profit driver is a live calf at weaning. The secondary profit driver to an operation is calf marketability. We have sought to maximize terminal traits to the extent that we don't infringe on fertility and efficiency. We seek to maximize gain and carcass traits while keeping a watchful eye on cow size and efficiency. The balance we strive for is to produce genetics that will make long lasting fertile cows, while at the same time producing steers and heifers that can top commercial markets.*

*As always we have a sight unseen guarantee if you are unable to attend. Videos of sale bulls will be posted at [sneddenranch.com](http://sneddenranch.com). We appreciate your interest and look forward to seeing you Saturday, October 12th.*

Sincerely,  
The Sneddens



# 2024 SNEDDEN RANCH SALE INFORMATION

## GENERAL INFORMATION

**Sale Date and Time: Saturday, October 12, 2024.** Silent auction on all lots opens 10 a.m., New York steak lunch at 12 Noon. First lot of silent auction closes shortly after 1 p.m., based on everyone having a chance to review the lots after lunch. Bulls available for viewing anytime before sale day at the ranch.

## SALE LOCATION & DIRECTIONS

SNEDDEN RANCH, Maricopa, CA Physical Address (GPS):  
29950 Hudson Ranch Road, Maricopa, CA 93252  
*From Maricopa, head southwest on CA 33/166 for 8.9 miles.  
Left on Hudson Ranch Rd. for 8.6 miles. Snedden Ranch is on the right,  
continue 1.4 miles down dirt driveway.*

## LODGING

**BEST WESTERN PLUS TAFT INN** Taft, CA, 661-745-5555  
(30 min. from the ranch)  
**CUYAMA BUCKHORN** New Cuyama, CA, 661-766-2825  
(25 min. from the ranch)  
**MICROTEL BY WYNDHAM** Wheeler Ridge, CA, 661-241-6666  
(50 min. from the ranch)

## SALE REPRESENTATIVES

Emilee Holt, American Hereford Association, 208-965-3130  
Jason Judge, Advanced Beef Solutions, 559-288-8142  
Woody Melton, Merck Animal Health, 661-809-4816.

## GUARANTEE

We guarantee that all breeding cattle are fertile to the best of our knowledge. We guarantee all sale cattle to be breeders under normal management practices. If they are injured any time in the 12 months after they are purchased so as to make them functionally infertile, we will provide you with a satisfactory replacement, if available, or issue you a credit equal to your purchase minus salvage value.

## HEALTH

All sale bulls will have passed a breeding soundness exam, including scrotal measurement and semen test. All bulls have been tested BVD-PI

free. Anaplaz vaccinated. Three shots of Vision 8, 2 shots of Vista 5L5, and 1 shot of Vista Once and Safeguard. All Hereford bulls have been DNA-tested free of all known defects recognized by the American Hereford Association.

## DELIVERY

Receive a \$50 trailer discount for any bull that is hauled home on sale day. Free delivery within 300 miles. To locations greater than 300 miles, Snedden Ranch will share delivery costs with buyer.

## BULL UPDATES

Yearling weights, scrotal measurements and carcass ultrasound will be available on sale day. All Hereford bulls have Genomic-enhanced EPDs.

## TERMS AND CONDITIONS

Cash or check will be terms of payment for bulls purchased.

## ANNOUNCEMENTS

Announcements on sale day by the owners or sale supplement will take precedence over statements in this catalog.

## LIABILITY

All persons attending the sale do so at their own risk. Neither the owners or any person associated with the sale, assumes any liability, legal or otherwise

## RANGES

Range\$ is a measure of an animal's pedigree to value its potential to make cows with longevity and calves that push down the scale. Range\$ is derived by reaching back into the pedigree and measuring the number of natural calves produced by dams on both sides of the pedigree, as well as the lifetime weaning ratio of the dam's progeny. This is a completely unbiased, data based approach to find traits of critical economic importance. Individuals that rise to the top are ones that have proven longevity and weaning performance exhibited in their pedigree. As you look through the catalog, the bulls with a higher Range\$ number, have a pedigree that has a proven economic advantage.

**VIDEOS AND UPDATED INFORMATION WILL BE AVAILABLE ONLINE AT [SNEDDENRANCH.COM](http://SNEDDENRANCH.COM)**

## 2024 SNEDDEN RANCH SALE FORMAT

The sale is a hybrid format — a silent auction that allows for a brief live auction to close out each lot. All buyers will register and get a buyer number. Each bull will be listed on a sheet of paper with a base price. The first one to write their buyer number under a bull will be casting a bid for that bull at the listed base price.

Additional bidders that write their buyer number on successive lines will be casting a bid \$100 higher than the previous bidder (denoted beside each successive line). Any bull can sell at the listed base, given there are no additional bidders. Silent auction will end after a reasonable amount of time that will be announced to bidders, at which point each lot will be closed out individually for bidders to be given a final opportunity.

Just as with any auction, no bid should be cast unless the bidder is willing to purchase the bull at the price at which they bid (which will be clearly denoted).

Snedden Ranch will be reserving an interest in several of the Hereford bulls, several of these are denoted in the catalog. Snedden Ranch may retain possession as a herd bull on one or more of these bulls pending yearling and ultrasound data. Feel free to call concerning the interests in these bulls as the date approaches. We will be offering updates on our website as to interest and terms of possession. Announcements on sale day regarding these bulls and any others will take precedence over the catalog.

Call Austin with any questions, 805-423-0248.



# HEREFORD REFERENCE SIRES

<b>REF A</b>	<b>SR HOME MAN 1956</b> {DLF,HYF,IEF,MSUDF}									
	CALVED: 10/10/19		REGISTRATION: P44110403				H/P/S/D: POLLED			
<b>BMS</b> 308	NIW 73S W18 HOMETOWN 10Y ET (SOD){CHB}(DLF,HYF,IEF,MSUDF,MDG)					SHF WONDER M326 W18 ET (SOD){CHB}(DLF,HYF,IEF,MDG,DBF)				
<b>BI\$</b> 374	/S HOMETOWN 55630 ET (DLF,HYF,IEF,MSUDF,MDF)					NIW P606 72N DAYDREAM 73S (DLF,HYF,IEF,MSUDF,MDF)				
<b>CHBS</b> 112	P43667680 /S LADY DOMINO 652S (DLF,IEF)					CL 1 DOMINO 484 (SOD)(DLF,HYF,IEF)				
	BW 5W 38W BEEF 172Z (DLF,HYF,IEF)					NIW 76S P20 BEEF 38W ET (SOD)(DLF,HYF,IEF,MSUDF,MDF)				
	SR BEEF OPTIMAID 1621 (DOD)					BW 98S M326 BENNITA 5W (DLF,HYF,IEF)				
	43769845 SR MISS ACHIEVE 0403					SR ACHIEVER 0157				
						SR MISS ACHIEVE 9616				
<b>CE</b>	<b>BW</b>	<b>WW</b>	<b>YW</b>	<b>MM</b>	<b>M&amp;G</b>	<b>UDDR</b>	<b>TEAT</b>	<b>SCF</b>	<b>REA</b>	<b>MARB</b>
6.2	3.2	44	79	19	41	1.20	1.30	14.2	0.11	0.17
Act. BW		BW Ratio		Adj. WW		WW Ratio		Age of Dam		
70		107		627		103		3		



AHA  
GE-EPD  
R\$  
\$29

Maximizing muscle and easy fleshing. Not only does this bull and his sons exhibit masculinity and muscle needed in the industry, but his daughters are feminine and his pedigree is stacked with long lasting high producing cows. His dam is an AHA designated dam of distinction.

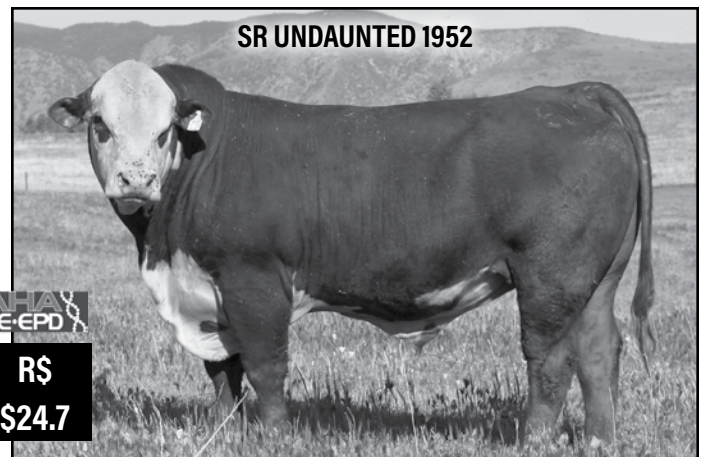
<b>REF B</b>	<b>SR IMPACT 2069</b> {DLF,HYF,IEF,MSUDF}									
	CALVED: 11/2/20		REGISTRATION: P44215458				H/P/S/D: POLLED			
<b>BMS</b> 377	SHF IMPACT 001A C63 (DLF,HYF,IEF,MSUDF,MDF)					GERBER ANODYNE 001A (SOD){CHB}(DLF,HYF,IEF,MSUDF)				
<b>BI\$</b> 452	CRR C63 IMPACT 870 (DLF,HYF,IEF)					SHF VICKIE R117 W26 ET (DOD)(DLF,HYF,IEF,MSUDF)				
<b>CHBS</b> 127	P43949456 CRR 719T ECLIPSE 215 (DLF,HYF,IEF,MSUDF)					TH 122 711 VICTOR 719T (SOD)(DLF,HYF,IEF,MSUDF,MDF,DBF)				
	SR RW2 OPTIMAN 0659					RW 218H EMBRACER 701N				
	SR 659 OPTIMAID 1134 (DLF,HYF,IEF,MSUDF)					SR LI DOMINETTE 9403				
	P43255807 SR MISS ACHIEVE 0403					SR ACHIEVER 0157				
						SR MISS ACHIEVE 9616				
<b>CE</b>	<b>BW</b>	<b>WW</b>	<b>YW</b>	<b>MM</b>	<b>M&amp;G</b>	<b>UDDR</b>	<b>TEAT</b>	<b>SCF</b>	<b>REA</b>	<b>MARB</b>
5.3	1.9	44	79	28	50	1.40	1.50	17.8	0.34	0.32
Act. BW		BW Ratio		Adj. WW		WW Ratio		Age of Dam		
68		99		537		97		9		



AHA  
GE-EPD  
R\$  
\$36.4

Calving ease. Super long bodied with the genetic ability for progeny to have hide that will slick off in the spring. He is a push towards improved carcass merit without sacrificing generations of quality maternal ability (check his R\$). His dam is also mother to previous stand out sire 1671.

<b>REF C</b>	<b>SR UNDAUNTED 1952</b> {DLF,HYF,IEF,MSUDF,MDF,DBF}									
	CALVED: 9/26/19		REGISTRATION: P44110440				H/P/S/D: POLLED			
<b>BMS</b> 416	R LEADER 6964 (SOD)(DLF,HYF,IEF,MSUDF,DBF)					HYALITE ON TARGET 936 (SOD)(DLF,HYF,IEF,MSUDF)				
<b>BI\$</b> 489	CHEZ DANTE 652D ET (DLF,HYF,IEF,MSUDF,MDF,DBF)					R MISS REVOLUTION 1009 (DOD)(DLF,HYF,IEF,DBP)				
<b>CHBS</b> 110	P43741272 R SWEET RED WINE 039 (DLF,HYF,IEF,DBP)					MSU TCF REVOLUTION 4R (SOD)(DLF,HYF,IEF,MDF,DBC)				
	SR EZ OPTIMAN 1064 (DLF,HYF,IEF)					R MISS WRANGLER 207 (DLF,HYF,IEF)				
	SR 064 OPTIMAID 1306 (DLF,HYF,IEF)					EPHR EZ MONEY 215S (HYP,IEP)				
	P43438585 SR OPTIMAID 0911 (DLF,HYF,IEF)					SR RW2 OPTIMAID 0702 (DLF,HYF,IEF)				
						SR RW2 OPTIMAN 0659				
						SR MISS ACHIEVE 0133 (DLF,HYF,IEF,MSUDF)				
<b>CE</b>	<b>BW</b>	<b>WW</b>	<b>YW</b>	<b>MM</b>	<b>M&amp;G</b>	<b>UDDR</b>	<b>TEAT</b>	<b>SCF</b>	<b>REA</b>	<b>MARB</b>
6.0	1.3	51	77	21	47	1.40	1.50	21.2	0.33	0.11
Act. BW		BW Ratio		Adj. WW		WW Ratio		Age of Dam		
63		92		581		95		6		



AHA  
GE-EPD  
R\$  
\$24.7

Calving ease big pigment bull. Calves are consistently dark red and well-marked. Bottom side of his pedigree combines two of our most prominent cow families that are stacked with fertility and longevity.





AHA  
GE-EPD

**SR UNDAUNTED 2351**

SR BEEF OPTIMAID 1621  
— Dam of Lot 351



<b>LOT 351</b>	<b>SR UNDAUNTED 2351 {DLF,HYF,IEF,MSUDF}</b>										
	Calved: 10/15/23			Registration: P44530306				H/P/S/D: POLLED			
<b>BMI\$ 368</b>	CHEZ DANTE 652D ET {DLF,HYF,IEF,MSUDF,MDF,DBF}					R LEADER 6964 {SOD}{DLF,HYF,IEF,MSUDF,DBF}					
<b>BIIS 449</b>	SR UNDAUNTED 1952 {DLF,HYF,IEF,MSUDF,MDF,DBF}					R SWEET RED WINE 039 {DLF,HYF,IEF,DBP}					
<b>CHBS 118</b>	P44110440 SR 064 OPTIMAID 1306 {DLF,HYF,IEF}					SR EZ OPTIMAN 1064 {DLF,HYF,IEC}					
	SR 064 OPTIMAID 1306 {DLF,HYF,IEF}					SR OPTIMAID 0911 {DLF,HYF,IEF}					
	BW 5W 38W BEEF 172Z {DLF,HYF,IEF}					NJW 76S P20 BEEF 38W ET {SOD}{DLF,HYF,IEF,MSUDF,MDF}					
	SR BEEF OPTIMAID 1621 {DOD}					BW 98S M326 BENNITA 5W {DLF,HYF,IEF}					
	43769845 SR MISS ACHIEVE 0403					SR ACHIEVER 0157					
						SR MISS ACHIEVE 9616					
<b>CE</b>	<b>BW</b>	<b>WW</b>	<b>YW</b>	<b>MM</b>	<b>M&amp;G</b>	<b>UDDR</b>	<b>TEAT</b>	<b>SCF</b>	<b>REA</b>	<b>MARB</b>	<b>R\$ 29.0</b>
1.2	2.8	59	95	25	54	1.40	1.30	17.5	0.26	0.18	
Act. BW		BW Ratio		Adj. WW		WW Ratio		Age of Dam			
68		97		674		111		7			

Long as a freight train, with plenty of growth. With a 97% birth ratio and 111% weaning ratio, coupled with standout pigment and maternal performance, this guy has real herd bull potential. Watch him move like a cat. His dam is a DOD and mother of reference sire A, 1956.



AHA Breed Average EPDs for 2022 Calves											
CE	BW	WW	YW	MM	M&G	UDDR	TEAT	SCF	REA	MARB	
3.3	2.7	55	88	26	54	1.26	1.27	16.9	0.44	0.13	



**SR IMPACT 2353**

SR X054 OPTIMAID 1220  
 — Dam of Lot 353



<b>LOT 353</b>	<b>SR IMPACT 2353 {DLF,HYF,IEF,MSUDF}</b>									
	Calved: 10/18/23			Registration: P44530286				H/P/S/D: POLLED		
<b>BMI\$ 372</b>	CRR C63 IMPACT 870 {DLF,HYF,IEF}					SHF IMPACT 001A C63 {DLF,HYF,IEF,MSUDF,MDF}				
<b>BII\$ 450</b>	SR IMPACT 2069 {DLF,HYF,IEF,MSUDF}					CRR 719T ECLIPSE 215 {DLF,HYF,IEF,MSUDF}				
<b>CHB\$ 126</b>	P44215458 SR 659 OPTIMAID 1134 {DLF,HYF,IEF,MSUDF}					SR RW2 OPTIMAN 0659				
	SR MISS ACHIEVE 0403									
	HUTH 642S OAK X054 {DLF,HYF,IEF}					HUTH OAK P017 {SOD}{DLF,HYF,IEF}				
	SR X054 OPTIMAID 1220					MSF 242 PAIGE 642S {HYP}				
	P43353909 SR RW 2 OPTIMAID 0609 {DLF,HYF,IEF}					RW 218H EMBRACER 701N				
	SR LI DOMINETTE 0203									
<b>CE</b>	<b>BW</b>	<b>WW</b>	<b>YW</b>	<b>MM</b>	<b>M&amp;G</b>	<b>UDDR</b>	<b>TEAT</b>	<b>SCF</b>	<b>REA</b>	<b>MARB</b>
6.5	1.1	41	73	22	42	1.40	1.40	17.8	0.32	0.39
Act. BW		BW Ratio		Adj. WW		WW Ratio		Age of Dam		
68		99		616		101		11		

**R\$  
28.7**

*Calving ease, carcass, and longevity. This moderate framed bull is marked right and out of an 11-year-old cow. Puts together all the economic traits in an attractive package.*

AHA Breed Average EPDs for 2022 Calves											
CE	BW	WW	YW	MM	M&G	UDDR	TEAT	SCF	REA	MARB	
3.3	2.7	55	88	26	54	1.26	1.27	16.9	0.44	0.13	





**SR IMPACT 2354**

SR BEEF 466 OPTIMAID 1815  
 — Dam of Lot 354



<b>LOT 354</b>	<b>SR IMPACT 2354 {DLF,HYF,IEF,MSUDF}</b>									
	Calved: 10/19/23			Registration: P44530327				H/P/S/D: POLLED		
<b>BMIS</b> 324	CRR C63 IMPACT 870 {DLF,HYF,IEF}					SHF IMPACT 001A C63 {DLF,HYF,IEF,MSUDF,MDF}				
<b>BIIS</b> 395	SR IMPACT 2069 {DLF,HYF,IEF,MSUDF}					CRR 719T ECLIPSE 215 {DLF,HYF,IEF,MSUDF}				
<b>CHBS</b> 124	P44215458 SR 659 OPTIMAID 1134 {DLF,HYF,IEF,MSUDF}					SR RW2 OPTIMAN 0659				
	SR BEEF OPTIMAN 1466 {CHB}{DLF,HYF,IEF,MDF}					SR MISS ACHIEVE 0403				
	SR BEEF 466 OPTIMAID 1815					BW 5W 38W BEEF 172Z {DLF,HYF,IEF}				
	P44001473 SR X054 OPTIMAID 1304 {DLF,HYF,IEF,MSUDF}					SR RW2 OPTIMAID 0808 {DLF,HYF,IEF}				
						HUTH 642S OAK X054 {DLF,HYF,IEF}				
						SR OPTIMAID 0913				
<b>CE</b>	<b>BW</b>	<b>WW</b>	<b>YW</b>	<b>MM</b>	<b>M&amp;G</b>	<b>UDDR</b>	<b>TEAT</b>	<b>SCF</b>	<b>REA</b>	<b>MARB</b>
1.2	4.3	61	104	33	64	1.20	1.30	13.5	0.62	0.05
Act. BW		BW Ratio		Adj. WW		WW Ratio		Age of Dam		
73		105		673		111		5		

**R\$  
26.7**

*The more you look at this bull the more you will be impressed by what he offers at every angle. Definitely a performance bull that will add pay weight to your next calf crop. He will add end product value while not sacrificing maternal value. His dam is an attractive larger framed cow with a great udder.*



AHA Breed Average EPDs for 2022 Calves											
CE	BW	WW	YW	MM	M&G	UDDR	TEAT	SCF	REA	MARB	
3.3	2.7	55	88	26	54	1.26	1.27	16.9	0.44	0.13	





**SR SANTIAGO MAN 2356**

SR 659 OPTIMAID 1009  
 – Maternal grandam to Lot 356



<b>LOT 356</b>	<b>SR SANTIAGO MAN 2356 {DLF,HYF,IEF,MSUDF}</b>									
	Calved: 10/20/23			Registration: P44530281				H/P/S/D: POLLED		
<b>BMI\$ 461</b>	/S HOMETOWN 55630 ET {DLF,HYF,IEF,MSUDF,MDF}					NJW 73S W18 HOMETOWN 10Y ET {SOD}{CHB}{DLF,HYF,IEF,MSUDF,MDC}				
<b>BII\$ 532</b>	SR HOME MAN 1956 {DLF,HYF,IEF,MSUDF}					/S LADY DOMINO 652S {DLF,IEF}				
<b>CHBS\$ 103</b>	P44110403 SR BEEF OPTIMAID 1621 {DOD}					BW 5W 38W BEEF 172Z {DLF,HYF,IEF}				
	SR X054 OPTIMAN 1257 {DLF,HYF,IEF}					SR MISS ACHIEVE 0403				
	SR 1257 OPTIMAID 1405					HUTH 642S OAK X054 {DLF,HYF,IEF}				
	P43551659 SR 659 OPTIMAID 1009 {DLF,HYF,IEF,MSUDF}					SR EZ OPTIMAID 0903 {DLF,HYF,IEF}				
						SR RW2 OPTIMAN 0659				
						SR MISS ACHIEVE 0705				
<b>CE</b>	<b>BW</b>	<b>WW</b>	<b>YW</b>	<b>MM</b>	<b>M&amp;G</b>	<b>UDDR</b>	<b>TEAT</b>	<b>SCF</b>	<b>REA</b>	<b>MARB</b>
6.4	1.7	41	69	23	44	1.30	1.40	25.2	0.07	0.19
Act. BW		BW Ratio		Adj. WW		WW Ratio		Age of Dam		
74		106		533		88		9		

**R\$  
16.7**

*A red cheeked moderate bull that has the potential to be calving ease. His dam has excellent pigment and an outstanding udder.*

AHA Breed Average EPDs for 2022 Calves											
CE	BW	WW	YW	MM	M&G	UDDR	TEAT	SCF	REA	MARB	
3.3	2.7	55	88	26	54	1.26	1.27	16.9	0.44	0.13	





**SR IMPACT 2357**

SR BEEF 466 OPTIMAN 1671  
 – Maternal grandsire to Lot 357



<b>LOT 357</b>	<b>SR IMPACT 2357 {DLF,HYF,IEF,MSUDF}</b>									
	Calved: 10/20/23			Registration: 44530328				H/P/S/D: HORNED		
<b>BMIS</b> 299	CRR C63 IMPACT 870 {DLF,HYF,IEF}					SHF IMPACT 001A C63 {DLF,HYF,IEF,MSUDF,MDF}				
<b>BIIS</b> 356	SR IMPACT 2069 {DLF,HYF,IEF,MSUDF}					CRR 719T ECLIPSE 215 {DLF,HYF,IEF,MSUDF}				
<b>CHBS</b> 99	P44215458 SR 659 OPTIMAID 1134 {DLF,HYF,IEF,MSUDF}					SR RW2 OPTIMAN 0659				
	SR BEEF 466 OPTIMAN 1671 {DLF,HYF,IEF,MSUDF}					SR MISS ACHIEVE 0403				
	SR RANGE MAID 1818					SR BEEF OPTIMAN 1466 {CHB}{DLF,HYF,IEF,MDF}				
	P44001439 SR RW2 OPTIMAID 0821 {DLF,HYF,IEF}					SR 659 OPTIMAID 1134 {DLF,HYF,IEF,MSUDF}				
						RW 218H EMBRACER 701N				
						SR LI DOMINETTE 0518				
<b>CE</b>	<b>BW</b>	<b>WW</b>	<b>YW</b>	<b>MM</b>	<b>M&amp;G</b>	<b>UDDR</b>	<b>TEAT</b>	<b>SCF</b>	<b>REA</b>	<b>MARB</b>
1.2	3.4	49	86	28	52	1.20	1.20	13.4	0.51	0.02
Act. BW		BW Ratio		Adj. WW		WW Ratio		Age of Dam		
75		108		609		100		5		

**R\$**  
**30.3**

*This horned bull is handsome and athletic with plenty of length. He is marked right with plenty of red in this performance package. This is the first of many in this catalog out 1671 daughters that will add length, pay weight, and mothering ability.*



AHA Breed Average EPDs for 2022 Calves											
CE	BW	WW	YW	MM	M&G	UDDR	TEAT	SCF	REA	MARB	
3.3	2.7	55	88	26	54	1.26	1.27	16.9	0.44	0.13	



**SR UNDAUNTED 2358**

1926  
 — Maternal half-sibling to Lot 358



<b>LOT 358</b>	<b>SR UNDAUNTED 2358 {DLF,HYF,IEF,MSUDF}</b>										
	Calved: 10/21/23			Registration: P44530282				H/P/S/D: POLLED			
BMI\$ 350	CHEZ DANTE 652D ET {DLF,HYF,IEF,MSUDF,MDF,DBF}					R LEADER 6964 {SOD}{DLF,HYF,IEF,MSUDF,DBF}					
BIIS 429	SR UNDAUNTED 1952 {DLF,HYF,IEF,MSUDF,MDF,DBF}					R SWEET RED WINE 039 {DLF,HYF,IEF,DBP}					
CHBS 111	P44110440 SR 064 OPTIMAID 1306 {DLF,HYF,IEF}					SR EZ OPTIMAN 1064 {DLF,HYF,IEC}					
	SR W035 OPTIMAN 1153 {DLF,HYF,IEF}					SR OPTIMAID 0911 {DLF,HYF,IEF}					
	SR ACHIEVE OPTIMAID 1415 {DLF,HYF,IEF,MSUDF}					HUTH R066 SIR JAMES W035 {DLF,HYF,IEF}					
	P43551666 SR EZ OPTIMAID 1106 {DLF,HYF,IEF}					SR RW2 OPTIMAID 0706 {DLF,HYF,IEF}					
						EPHR EZ MONEY 215S {HYP,IEP}					
						SR LI DOMINETTE 0604					
CE	BW	WW	YW	MM	M&G	UDDR	TEAT	SCF	REA	MARB	
-0.1	2.1	54	78	27	54	1.30	1.40	16.7	0.27	0.22	
Act. BW		BW Ratio			Adj. WW		WW Ratio		Age of Dam		
69		98			661		109		9		

**R\$  
23.4**

*Probably the deepest bodied bull in the sale. This guy has a little extra frame with extra pigment. Performance and masculinity. His 9 year old dam posts a weaning ratio of 105.4% on her calves.*

AHA Breed Average EPDs for 2022 Calves											
CE	BW	WW	YW	MM	M&G	UDDR	TEAT	SCF	REA	MARB	
3.3	2.7	55	88	26	54	1.26	1.27	16.9	0.44	0.13	





**SR SANTIAGO MAN 2360**

SR RANGE MAID 1907  
— Dam of Lot 360



<b>LOT 360</b>	<b>SR SANTIAGO MAN 2360 {DLF,HYF,IEF,MSUDF}</b>										
	Calved: 10/24/23			Registration: P44530338				H/P/S/D: POLLED			
<b>BMI\$ 325</b>	/S HOMETOWN 55630 ET {DLF,HYF,IEF,MSUDF,MDF}					NJW 73S W18 HOMETOWN 10Y ET {SOD}{CHB}{DLF,HYF,IEF,MSUDF,MDC}					
<b>BIIS 396</b>	SR HOME MAN 1956 {DLF,HYF,IEF,MSUDF}					/S LADY DOMINO 652S {DLF,IEF}					
<b>CHBS 102</b>	P44110403 SR BEEF OPTIMAID 1621 {DOD}					BW 5W 38W BEEF 172Z {DLF,HYF,IEF}					
	SR BEEF 466 OPTIMAN 1671 {DLF,HYF,IEF,MSUDF}					SR MISS ACHIEVE 0403					
	SR RANGE MAID 1907					SR BEEF OPTIMAN 1466 {CHB}{DLF,HYF,IEF,MDF}					
	P44110478 SR 1257 OPTIMAID 1423					SR 659 OPTIMAID 1134 {DLF,HYF,IEF,MSUDF}					
						SR X054 OPTIMAN 1257 {DLF,HYF,IEF}					
						SR W035 OPTIMAID 1117					
<b>CE</b>	<b>BW</b>	<b>WW</b>	<b>YW</b>	<b>MM</b>	<b>M&amp;G</b>	<b>UDDR</b>	<b>TEAT</b>	<b>SCF</b>	<b>REA</b>	<b>MARB</b>	<b>R\$ 32.5</b>
4.1	5.0	55	93	28	56	1.10	1.00	15.6	0.16	0.07	
Act. BW		BW Ratio		Adj. WW		WW Ratio		Age of Dam			
73		107		646		106		4			

*This is one you couldn't miss from any stage of his life. From the long body to his pasture presence, to his foot size and structure, to his long stride and movement like a cat. You won't have to look hard to find him. This is the first of several in this catalog that are a 1956 on 1671 daughters. This combination not only brings together some of the most proven cattle at Snedden Ranch but in the entire breed as well.*



AHA Breed Average EPDs for 2022 Calves											
CE	BW	WW	YW	MM	M&G	UDDR	TEAT	SCF	REA	MARB	
3.3	2.7	55	88	26	54	1.26	1.27	16.9	0.44	0.13	



**SR IMPACT 2361**

SR HOME MAID 2022  
— Dam of Lot 361

AHA  
GE-EPD



<b>LOT 361</b>	<b>SR IMPACT 2361 {DLF,HYF,IEF,MSUDF}</b>										
	Calved: 10/25/23			Registration: P44530361				H/P/S/D: POLLED			
<b>BMI\$ 327</b>	CRR C63 IMPACT 870 {DLF,HYF,IEF}					SHF IMPACT 001A C63 {DLF,HYF,IEF,MSUDF,MDF}					
	SR IMPACT 2069 {DLF,HYF,IEF,MSUDF}					CRR 719T ECLIPSE 215 {DLF,HYF,IEF,MSUDF}					
<b>BIIS 400</b>	P44215458 SR 659 OPTIMAID 1134 {DLF,HYF,IEF,MSUDF}					SR RW2 OPTIMAN 0659					
	SR MISS ACHIEVE 0403										
<b>CHBS 111</b>	/S HOMETOWN 55630 ET {DLF,HYF,IEF,MSUDF,MDF}					NJW 73S W18 HOMETOWN 10Y ET {SOD}{CHB}{DLF,HYF,IEF,MSUDF,MDC}					
	SR HOME MAID 2022					/S LADY DOMINO 652S {DLF,IEF}					
P44215546 SR BEEF OPTIMAID 1627					BW 5W 38W BEEF 172Z {DLF,HYF,IEF}						
SR X054 OPTIMAID 1220											
<b>CE</b>	<b>BW</b>	<b>WW</b>	<b>YW</b>	<b>MM</b>	<b>M&amp;G</b>	<b>UDDR</b>	<b>TEAT</b>	<b>SCF</b>	<b>REA</b>	<b>MARB</b>	
6.1	2.9	48	83	24	48	1.20	1.30	15.4	0.21	0.23	
Act. BW		BW Ratio		Adj. WW		WW Ratio		Age of Dam			
63		94		606		100		3			

**R\$  
17.0**

*A well balanced structurally correct, calving ease bull. His young dam has a near perfect udder in a moderate, easy fleshing package. Look to him for a nice balance of CE, growth, and carcass.*

AHA Breed Average EPDs for 2022 Calves											
CE	BW	WW	YW	MM	M&G	UDDR	TEAT	SCF	REA	MARB	
3.3	2.7	55	88	26	54	1.26	1.27	16.9	0.44	0.13	





**SR SANTIAGO MAN 2362**

SR OPTIMAID 0911  
— Dam of Lot 362



<b>LOT 362</b>	<b>SR SANTIAGO MAN 2362 {DLF,HYF,IEF,MSUDF}</b>									
	Calved: 10/27/23			Registration: P44530271				H/P/S/D: POLLED		
<b>BMI\$ 298</b>	/S HOMETOWN 55630 ET {DLF,HYF,IEF,MSUDF,MDF}					NJW 73S W18 HOMETOWN 10Y ET {SOD}{CHB}{DLF,HYF,IEF,MSUDF,MDC}				
<b>BIIS 362</b>	SR HOME MAN 1956 {DLF,HYF,IEF,MSUDF}					/S LADY DOMINO 652S {DLF,IEF}				
<b>CHBS 105</b>	P44110403 SR BEEF OPTIMAID 1621 {DOD}					BW 5W 38W BEEF 172Z {DLF,HYF,IEF}				
	SR RW2 OPTIMAN 0659					SR MISS ACHIEVE 0403				
	SR OPTIMAID 0911 {DLF,HYF,IEF}					RW 218H EMBRACER 701N				
	P43062879 SR MISS ACHIEVE 0133 {DLF,HYF,IEF,MSUDF}					SR LI DOMINETTE 9403				
						SR ACHIEVER 9773				
						SR LI DOMINETTE 9506				
<b>CE</b>	<b>BW</b>	<b>WW</b>	<b>YW</b>	<b>MM</b>	<b>M&amp;G</b>	<b>UDDR</b>	<b>TEAT</b>	<b>SCF</b>	<b>REA</b>	<b>MARB</b>
1.0	3.8	42	74	15	36	1.40	1.50	14.0	0.20	0.19
Act. BW		BW Ratio		Adj. WW		WW Ratio		Age of Dam		
73		108		589		97		14		

**R\$  
40.4**

Check out the R\$! If you have followed our program over the years you are no stranger to the dam of this bull. She makes good one after good one. The picture above is her at 13 years of age. Her progeny have averaged 107.4% for weaning, 108.9% for yearling, 107% for REA, and 103.9% for IMF. Whether you are raising replacements, selling calves, selling them on the rail, or selling beef, this bull is backed by the type of cows that pay the mortgage, pay the property taxes, and buy new trucks for your operation.

AHA Breed Average EPDs for 2022 Calves											
CE	BW	WW	YW	MM	M&G	UDDR	TEAT	SCF	REA	MARB	
3.3	2.7	55	88	26	54	1.26	1.27	16.9	0.44	0.13	





**SR SANTIAGO MAN 2363**

SR RANGE MAID 1926  
— Dam of Lot 363



<b>LOT 363</b>	<b>SR SANTIAGO MAN 2363 {DLF,HYF,IEF,MSUDF}</b>									
	Calved: 10/27/23			Registration: P44530349				H/P/S/D: POLLED		
BMI\$ 332	/S HOMETOWN 55630 ET {DLF,HYF,IEF,MSUDF,MDF}					NJW 73S W18 HOMETOWN 10Y ET {SOD}{CHB}{DLF,HYF,IEF,MSUDF,MDC}				
BIIS 417	SR HOME MAN 1956 {DLF,HYF,IEF,MSUDF}					/S LADY DOMINO 652S {DLF,IEF}				
CHBS 140	P44110403 SR BEEF OPTIMAID 1621 {DOD}					BW 5W 38W BEEF 172Z {DLF,HYF,IEF}				
	SR BEEF 466 OPTIMAN 1671 {DLF,HYF,IEF,MSUDF}					SR MISS ACHIEVE 0403				
	SR RANGE MAID 1926					SR BEEF OPTIMAN 1466 {CHB}{DLF,HYF,IEF,MDF}				
	P44110475 SR ACHIEVE OPTIMAID 1415 {DLF,HYF,IEF,MSUDF}					SR 659 OPTIMAID 1134 {DLF,HYF,IEF,MSUDF}				
						SR W035 OPTIMAN 1153 {DLF,HYF,IEF}				
						SR EZ OPTIMAID 1106 {DLF,HYF,IEF}				
CE	BW	WW	YW	MM	M&G	UDDR	TEAT	SCF	REA	MARB
8.9	2.0	51	83	26	52	1.20	1.20	14.2	0.58	0.41
Act. BW		BW Ratio		Adj. WW		WW Ratio		Age of Dam		
70		102		699		115		4		

**R\$  
29.5**

*Another 1956 on a 1671 daughter with an impeccable udder. This bull is well balanced on paper and in the field. He posted a 115% WW ratio with full pigment. He is in the top 5% of the breed for marbling while not giving up any muscling or structural integrity. Definite outcross herd bull potential here.*

AHA Breed Average EPDs for 2022 Calves											
CE	BW	WW	YW	MM	M&G	UDDR	TEAT	SCF	REA	MARB	
3.3	2.7	55	88	26	54	1.26	1.27	16.9	0.44	0.13	





**SR SANTIAGO MAN 2365**

SR BEEF 466 OPTIMAID 1908  
 — Dam of Lot 365



<b>LOT 365</b>	<b>SR SANTIAGO MAN 2365 {DLF,HYF,IEF,MSUDF}</b>									
	Calved: 10/28/23			Registration: P44530339				H/P/S/D: POLLED		
<b>BMI\$</b> 359	/S HOMETOWN 55630 ET {DLF,HYF,IEF,MSUDF,MDF}					NJW 73S W18 HOMETOWN 10Y ET {SOD}{CHB}{DLF,HYF,IEF,MSUDF,MDC}				
<b>BI\$</b> 429	SR HOME MAN 1956 {DLF,HYF,IEF,MSUDF}					/S LADY DOMINO 652S {DLF,IEF}				
<b>CHBS</b> 132	P44110403 SR BEEF OPTIMAID 1621 {DOD}					BW 5W 38W BEEF 172Z {DLF,HYF,IEF}				
	SR BEEF OPTIMAN 1466 {CHB}{DLF,HYF,IEF,MDF}					SR MISS ACHIEVE 0403				
	SR BEEF 466 OPTIMAID 1908					BW 5W 38W BEEF 172Z {DLF,HYF,IEF}				
	P44110480 SR ACHIEVE OPTIMAID 1425					SR RW2 OPTIMAID 0808 {DLF,HYF,IEF}				
						SR W035 OPTIMAN 1153 {DLF,HYF,IEF}				
						SR MISS ACHIEVE 0723				
<b>CE</b>	<b>BW</b>	<b>WW</b>	<b>YW</b>	<b>MM</b>	<b>M&amp;G</b>	<b>UDDR</b>	<b>TEAT</b>	<b>SCF</b>	<b>REA</b>	<b>MARB</b>
8.1	1.9	41	72	23	43	1.20	1.30	16.2	0.39	0.30
Act. BW		BW Ratio		Adj. WW		WW Ratio		Age of Dam		
70		102		504		83		4		

**R\$  
7.5**

*Calving ease bull with carcass potential. This moderate framed bull is out of a great uddered long bodied cow with plenty of longevity in the pedigree.*



AHA Breed Average EPDs for 2022 Calves											
CE	BW	WW	YW	MM	M&G	UDDR	TEAT	SCF	REA	MARB	
3.3	2.7	55	88	26	54	1.26	1.27	16.9	0.44	0.13	





**SR IMPACT 2366**

SR 355 OPTIMAID 1719  
 — Dam of Lot 366

<b>LOT 366</b>	<b>SR IMPACT 2366</b> {DLF,HYF,IEF,MSUDF}									
	Calved: 10/28/23			Registration: P44530319				H/P/S/D: POLLED		
<b>BMI\$ 328</b>	CRR C63 IMPACT 870 {DLF,HYF,IEF}					SHF IMPACT 001A C63 {DLF,HYF,IEF,MSUDF,MDF}				
<b>BIIS 395</b>	SR IMPACT 2069 {DLF,HYF,IEF,MSUDF}					CRR 719T ECLIPSE 215 {DLF,HYF,IEF,MSUDF}				
<b>CHBS 110</b>	P44215458 SR 659 OPTIMAID 1134 {DLF,HYF,IEF,MSUDF}					SR RW2 OPTIMAN 0659				
	SR 064 OPTIMAN 1355 {DLF,HYF,IEF}					SR MISS ACHIEVE 0403				
	SR 355 OPTIMAID 1719					SR EZ OPTIMAN 1064 {DLF,HYF,IEC}				
	P43880642 SR X054 OPTIMAID 1313 {DLF,HYF,IEF,MSUDF}					SR MISS ACHIEVER 0802 {DLF,HYF,IEF}				
						HUTH 642S OAK X054 {DLF,HYF,IEF}				
						SR RW 2 OPTIMAID 0603 {DLF,HYF,IEF,MSUDF}				
<b>CE</b>	<b>BW</b>	<b>WW</b>	<b>YW</b>	<b>MM</b>	<b>M&amp;G</b>	<b>UDDR</b>	<b>TEAT</b>	<b>SCF</b>	<b>REA</b>	<b>MARB</b>
1.3	3.3	49	82	28	52	1.20	1.20	15.0	0.41	0.14
Act. BW		BW Ratio		Adj. WW		WW Ratio		Age of Dam		
72		103		529		87		6		

**R\$  
17.3**

*Deep bodied red cheeked bull that is exceptionally balanced. His dam is exceptionally deep bodied and easy fleshing. He will make a low maintenance long lasting bull.*

AHA Breed Average EPDs for 2022 Calves											
CE	BW	WW	YW	MM	M&G	UDDR	TEAT	SCF	REA	MARB	
3.3	2.7	55	88	26	54	1.26	1.27	16.9	0.44	0.13	





**SR SANTIAGO MAN 2368**

SR BEEF 466 OPTIMAID 1915  
— Dam of Lot 368



<b>LOT 368</b>	<b>SR SANTIAGO MAN 2368 {DLF,HYF,IEF,MSUDF}</b>										
	Calved: 10/31/23			Registration: P44530343				H/P/S/D: POLLED			
<b>BMI\$ 265</b>	/S HOMETOWN 55630 ET {DLF,HYF,IEF,MSUDF,MDF}					NJW 73S W18 HOMETOWN 10Y ET {SOD}{CHB}{DLF,HYF,IEF,MSUDF,MDC}					
<b>BIIS 323</b>	SR HOME MAN 1956 {DLF,HYF,IEF,MSUDF}					/S LADY DOMINO 652S {DLF,IEF}					
<b>CHBS 102</b>	P44110403 SR BEEF OPTIMAID 1621 {DOD}					BW 5W 38W BEEF 172Z {DLF,HYF,IEF}					
	SR BEEF OPTIMAN 1466 {CHB}{DLF,HYF,IEF,MDF}					SR MISS ACHIEVE 0403					
	SR BEEF 466 OPTIMAID 1915					BW 5W 38W BEEF 172Z {DLF,HYF,IEF}					
	P44110434 SR X054 OPTIMAID 1220					SR RW2 OPTIMAID 0808 {DLF,HYF,IEF}					
						HUTH 642S OAK X054 {DLF,HYF,IEF}					
						SR RW 2 OPTIMAID 0609 {DLF,HYF,IEF}					
<b>CE</b>	<b>BW</b>	<b>WW</b>	<b>YW</b>	<b>MM</b>	<b>M&amp;G</b>	<b>UDDR</b>	<b>TEAT</b>	<b>SCF</b>	<b>REA</b>	<b>MARB</b>	<b>R\$ 13.5</b>
5.5	2.4	41	74	20	40	1.20	1.30	11.6	0.19	0.15	
Act. BW		BW Ratio		Adj. WW		WW Ratio		Age of Dam			
70		102		562		92		4			

*Goggle eyed calving ease bull. This quiet disposition bull is out of a cow that consistently throws pigment and quality. Her son the year before was our second high selling bull in our 2023 sale.*



AHA Breed Average EPDs for 2022 Calves											
CE	BW	WW	YW	MM	M&G	UDDR	TEAT	SCF	REA	MARB	
3.3	2.7	55	88	26	54	1.26	1.27	16.9	0.44	0.13	



**SR UNDAUNTED 2369**

SR BEEF 466 OPTIMAID 1830  
 – Dam of Lot 369



<b>LOT 369</b>	<b>SR UNDAUNTED 2369 {DLF,HYF,IEF,MSUDF}</b>										
	Calved: 11/1/23			Registration: P44530335				H/P/S/D: POLLED			
	BMI\$ 301	CHEZ DANTE 652D ET {DLF,HYF,IEF,MSUDF,MDF,DBF}					R LEADER 6964 {SOD}{DLF,HYF,IEF,MSUDF,DBF}				
BII\$ 361	SR UNDAUNTED 1952 {DLF,HYF,IEF,MSUDF,MDF,DBF}					R SWEET RED WINE 039 {DLF,HYF,IEF,DBP}					
CHBS 102	P44110440 SR 064 OPTIMAID 1306 {DLF,HYF,IEF}					SR EZ OPTIMAN 1064 {DLF,HYF,IEC}					
	SR BEEF OPTIMAN 1466 {CHB}{DLF,HYF,IEF,MDF}					SR OPTIMAID 0911 {DLF,HYF,IEF}					
	SR BEEF 466 OPTIMAID 1830					BW 5W 38W BEEF 172Z {DLF,HYF,IEF}					
	P44001455 SR EZ OPTIMAID 1110 {DLF,HYF,IEF}					SR RW2 OPTIMAID 0808 {DLF,HYF,IEF}					
						EPHR EZ MONEY 215S {HYP,IEP}					
						SR RW2 OPTIMAID 0721					
CE	BW	WW	YW	MM	M&G	UDDR	TEAT	SCF	REA	MARB	
3.0	3.8	58	94	21	50	1.20	1.00	13.1	0.56	-0.06	
Act. BW		BW Ratio		Adj. WW		WW Ratio		Age of Dam			
69		100		630		104		5			

**R\$  
17.7**

*This fancy fronted performance bull is going to add growth to your calf crop. His dam is a long bodied cow with a great udder. He is red cheeked with one goggle eye.*

AHA Breed Average EPDs for 2022 Calves											
CE	BW	WW	YW	MM	M&G	UDDR	TEAT	SCF	REA	MARB	
3.3	2.7	55	88	26	54	1.26	1.27	16.9	0.44	0.13	





**SR SANTIAGO MAN 2370**

SR RANGE MAID 1820  
— Dam of Lot 370



<b>LOT 370</b>	<b>SR SANTIAGO MAN 2370 {DLF,HYF,IEF,MSUDF}</b>										
	Calved: 11/1/23			Registration: P44530329				H/P/S/D: POLLED			
<b>BMI\$ 345</b>	/S HOMETOWN 55630 ET {DLF,HYF,IEF,MSUDF,MDF}					NJW 73S W18 HOMETOWN 10Y ET {SOD}{CHB}{DLF,HYF,IEF,MSUDF,MDC}					
<b>BIIS 422</b>	SR HOME MAN 1956 {DLF,HYF,IEF,MSUDF}					/S LADY DOMINO 652S {DLF,IEF}					
<b>CHBS 119</b>	P44110403 SR BEEF OPTIMAID 1621 {DOD}					BW 5W 38W BEEF 172Z {DLF,HYF,IEF}					
	SR BEEF 466 OPTIMAN 1671 {DLF,HYF,IEF,MSUDF}					SR MISS ACHIEVE 0403					
	SR RANGE MAID 1820 {DLF,HYF,IEF,MSUDF}					SR BEEF OPTIMAN 1466 {CHB}{DLF,HYF,IEF,MDF}					
	P44001485 SR 1257 OPTIMAID 1405					SR 659 OPTIMAID 1134 {DLF,HYF,IEF,MSUDF}					
						SR X054 OPTIMAN 1257 {DLF,HYF,IEF}					
						SR 659 OPTIMAID 1009 {DLF,HYF,IEF,MSUDF}					
<b>CE</b>	<b>BW</b>	<b>WW</b>	<b>YW</b>	<b>MM</b>	<b>M&amp;G</b>	<b>UDDR</b>	<b>TEAT</b>	<b>SCF</b>	<b>REA</b>	<b>MARB</b>	<b>R\$ 20.3</b>
5.7	3.0	45	82	21	43	1.20	1.20	16.7	0.10	0.30	
Act. BW		BW Ratio		Adj. WW		WW Ratio		Age of Dam			
71		102		624		103		5			

*This goggled eyed bull is exceptionally thick with added length. Really well balanced on paper with the ability to add marbling. Another 1956 on a 1671 daughter that really meshed. Look this potential herd sire over carefully to see how many boxes he checks on the hoof and on paper. His dam is a feminine good uddered cow that maximizes body length.*



AHA Breed Average EPDs for 2022 Calves											
CE	BW	WW	YW	MM	M&G	UDDR	TEAT	SCF	REA	MARB	
3.3	2.7	55	88	26	54	1.26	1.27	16.9	0.44	0.13	



**SR UNDAUNTED 2372**

SR BEEF OPTIMAID 1404  
— Dam of Lot 372



<b>LOT 372</b>	<b>SR UNDAUNTED 2372 {DLF,HYF,IEF,MSUDF}</b>									
	Calved: 11/3/23			Registration: P44530280				H/P/S/D: POLLED		
<b>BMI\$ 373</b>	CHEZ DANTE 652D ET {DLF,HYF,IEF,MSUDF,MDF,DBF}					R LEADER 6964 {SOD}{DLF,HYF,IEF,MSUDF,DBF}				
<b>BIIS 447</b>	SR UNDAUNTED 1952 {DLF,HYF,IEF,MSUDF,MDF,DBF}					R SWEET RED WINE 039 {DLF,HYF,IEF,DBP}				
<b>CHBS 88</b>	P44110440 SR 064 OPTIMAID 1306 {DLF,HYF,IEF}					SR EZ OPTIMAN 1064 {DLF,HYF,IEC}				
	SR BEEF OPTIMAID 1404 {DLF,HYF,IEF,MSUDF}					SR OPTIMAID 0911 {DLF,HYF,IEF}				
	BW 5W 38W BEEF 172Z {DLF,HYF,IEF}					NJW 76S P20 BEEF 38W ET {SOD}{DLF,HYF,IEF,MSUDF,MDF}				
	43551618 SR MISS ACHIEVE 0133 {DLF,HYF,IEF,MSUDF}					BW 98S M326 BENNITA 5W {DLF,HYF,IEF}				
						SR ACHIEVER 9773				
						SR LI DOMINETTE 9506				
<b>CE</b>	<b>BW</b>	<b>WW</b>	<b>YW</b>	<b>MM</b>	<b>M&amp;G</b>	<b>UDDR</b>	<b>TEAT</b>	<b>SCF</b>	<b>REA</b>	<b>MARB</b>
6.3	1.4	45	69	21	44	1.40	1.40	20.2	-0.04	0.21
Act. BW		BW Ratio			Adj. WW		WW Ratio		Age of Dam	
67		96			670		110		9	

**R\$  
33.7**

*Goggle eyed calving ease bull out of a highly proven 9-year-old cow. Check out the R\$ as you look at the attractive design of this bull. Dig into the cows in this pedigree and you will see unmatched fertility and longevity. His dams calves have averaged 96.3% at birth, 105.7% at weaning, and 121% for marbling.*

AHA Breed Average EPDs for 2022 Calves											
CE	BW	WW	YW	MM	M&G	UDDR	TEAT	SCF	REA	MARB	
3.3	2.7	55	88	26	54	1.26	1.27	16.9	0.44	0.13	





**SR IMPACT 2374**

SR BEEF 466 OPTIMAID 1910  
 — Dam of Lot 374 with Lot 374



<b>LOT 374</b>	<b>SR IMPACT 2374 {DLF,HYF,IEF,MSUDF}</b>										
	Calved: 11/5/23			Registration: P44530341				H/P/S/D: POLLED			
BMI\$ 349	CRR C63 IMPACT 870 {DLF,HYF,IEF}					SHF IMPACT 001A C63 {DLF,HYF,IEF,MSUDF,MDF}					
BI\$ 425	SR IMPACT 2069 {DLF,HYF,IEF,MSUDF}					CRR 719T ECLIPSE 215 {DLF,HYF,IEF,MSUDF}					
CHBS 93	P44215458 SR 659 OPTIMAID 1134 {DLF,HYF,IEF,MSUDF}					SR RW2 OPTIMAN 0659					
	SR BEEF OPTIMAN 1466 {CHB}{DLF,HYF,IEF,MDF}					SR MISS ACHIEVE 0403					
	SR BEEF 466 OPTIMAID 1910 {DLF,HYF,IEF,MSUDF}					BW 5W 38W BEEF 172Z {DLF,HYF,IEF}					
	P44110402 SR 659 OPTIMAID 1021 {DLF,HYF,IEF}					SR RW2 OPTIMAID 0808 {DLF,HYF,IEF}					
	SR RW2 OPTIMAN 0659						SR MISS ACHIEVE 0726				
<b>CE</b>	<b>BW</b>	<b>WW</b>	<b>YW</b>	<b>MM</b>	<b>M&amp;G</b>	<b>UDDR</b>	<b>TEAT</b>	<b>SCF</b>	<b>REA</b>	<b>MARB</b>	<b>R\$ 38.0</b>
2.6	4.0	59	95	26	55	1.30	1.30	17.8	0.23	0.12	
Act. BW		BW Ratio		Adj. WW		WW Ratio		Age of Dam			
72		105		698		115		4			

*This bull may be pushing in the direction the industry needs, rapid early growth with moderate mature weight. This masculine, slick hided bull with full pigment puts all the pieces together and weaned off at 115%. Quiet disposition, backed by high producing cows with longevity. His dam is a beautiful moderate cow with a perfect udder. Herd bull potential.*



AHA Breed Average EPDs for 2022 Calves											
CE	BW	WW	YW	MM	M&G	UDDR	TEAT	SCF	REA	MARB	
3.3	2.7	55	88	26	54	1.26	1.27	16.9	0.44	0.13	



**SR IMPACT 2376**

SR 1257 OPTIMAID 1423  
 — Dam of Lot 376



<b>LOT 376</b>	<b>SR IMPACT 2376 {DLF,HYF,IEF,MSUDF}</b>										
	Calved: 11/7/23			Registration: P44530288				H/P/S/D: POLLED			
BMI\$ 398	CRR C63 IMPACT 870 {DLF,HYF,IEF}					SHF IMPACT 001A C63 {DLF,HYF,IEF,MSUDF,MDF}					
BII\$ 476	SR IMPACT 2069 {DLF,HYF,IEF,MSUDF}					CRR 719T ECLIPSE 215 {DLF,HYF,IEF,MSUDF}					
CHBS\$ 124	P44215458 SR 659 OPTIMAID 1134 {DLF,HYF,IEF,MSUDF}					SR RW2 OPTIMAN 0659					
	SR X054 OPTIMAN 1257 {DLF,HYF,IEF}					SR MISS ACHIEVE 0403					
	SR 1257 OPTIMAID 1423					HUTH 642S OAK X054 {DLF,HYF,IEF}					
	P43551670 SR W035 OPTIMAID 1117					SR EZ OPTIMAID 0903 {DLF,HYF,IEF}					
						HUTH R066 SIR JAMES W035 {DLF,HYF,IEF}					
						SR LI DOMINETTE 0512					
CE	BW	WW	YW	MM	M&G	UDDR	TEAT	SCF	REA	MARB	
8.9	2.3	50	81	33	58	1.20	1.30	19.1	0.25	0.22	
Act. BW		BW Ratio		Adj. WW		WW Ratio		Age of Dam			
67		96		551		91		9			

**R\$  
21.7**

*A well balanced, attractive red cheeked bull with above average marbling. His 9-year-old dam is a deep bodied, big capacity cow.*

AHA Breed Average EPDs for 2022 Calves											
CE	BW	WW	YW	MM	M&G	UDDR	TEAT	SCF	REA	MARB	
3.3	2.7	55	88	26	54	1.26	1.27	16.9	0.44	0.13	





**SR SANTIAGO MAN 2377**

SR BEEF OPTIMAID 1620  
— Dam of Lot 377



<b>LOT 377</b>	<b>SR SANTIAGO MAN 2377 {DLF,HYF,IEF,MSUDF}</b>										
	Calved: 11/7/23			Registration: P44530305				H/P/S/D: POLLED			
<b>BMI\$</b> 411	/S HOMETOWN 55630 ET {DLF,HYF,IEF,MSUDF,MDF}					NJW 73S W18 HOMETOWN 10Y ET {SOD}{CHB}{DLF,HYF,IEF,MSUDF,MDC}					
<b>BIIS</b> 472	SR HOME MAN 1956 {DLF,HYF,IEF,MSUDF}					/S LADY DOMINO 652S {DLF,IEF}					
<b>CHBS</b> 76	P44110403 SR BEEF OPTIMAID 1621 {DOD}					BW 5W 38W BEEF 172Z {DLF,HYF,IEF}					
	SR BEEF OPTIMAID 1620					SR MISS ACHIEVE 0403					
	BW 5W 38W BEEF 172Z {DLF,HYF,IEF}					NJW 76S P20 BEEF 38W ET {SOD}{DLF,HYF,IEF,MSUDF,MDF}					
	P43769925 SR ACHIEVE OPTIMAID 1314 {DLF,HYF,IEF,MSUDF}					BW 98S M326 BENNITA 5W {DLF,HYF,IEF}					
						SR W035 OPTIMAN 1153 {DLF,HYF,IEF}					
						SR RW2 OPTIMAID 0816					
<b>CE</b>	<b>BW</b>	<b>WW</b>	<b>YW</b>	<b>MM</b>	<b>M&amp;G</b>	<b>UDDR</b>	<b>TEAT</b>	<b>SCF</b>	<b>REA</b>	<b>MARB</b>	
6.5	1.4	41	61	15	36	1.50	1.50	23.5	0.07	0.06	
Act. BW		BW Ratio		Adj. WW		WW Ratio		Age of Dam			
67		95		662		109		7			

**R\$**  
**19.7**

*Calving ease bull with pigment. A balanced bull that has enough power for cows but could breed heifers as well. He was born light but weaned off at 109%. His 7-year-old dam has a perfect udder.*



AHA Breed Average EPDs for 2022 Calves											
CE	BW	WW	YW	MM	M&G	UDDR	TEAT	SCF	REA	MARB	
3.3	2.7	55	88	26	54	1.26	1.27	16.9	0.44	0.13	





**SR IMPACT 2378**

SR BEEF OPTIMAID 1612  
— Dam of Lot 378



<b>LOT 378</b>	<b>SR IMPACT 2378 {DLF,HYF,IEF,MSUDF}</b>									
	Calved: 11/9/23			Registration: 44530303				H/P/S/D: HORNED		
<b>BMI\$</b> 342	CRR C63 IMPACT 870 {DLF,HYF,IEF}					SHF IMPACT 001A C63 {DLF,HYF,IEF,MSUDF,MDF}				
<b>BII\$</b> 406	SR IMPACT 2069 {DLF,HYF,IEF,MSUDF}					CRR 719T ECLIPSE 215 {DLF,HYF,IEF,MSUDF}				
<b>CHBS</b> 107	P44215458 SR 659 OPTIMAID 1134 {DLF,HYF,IEF,MSUDF}					SR RW2 OPTIMAN 0659				
	SR MISS ACHIEVE 0403									
	BW 5W 38W BEEF 172Z {DLF,HYF,IEF}					NJW 76S P20 BEEF 38W ET {SOD}{DLF,HYF,IEF,MSUDF,MDF}				
	SR BEEF OPTIMAID 1612					BW 98S M326 BENNITA 5W {DLF,HYF,IEF}				
	43769856 SR MISS ACHIEVER 0812 {DLF,HYF,IEF,MSUDF}					SR ACHIEVER 0157				
						SR LI DOMINETTE 0409				
<b>CE</b>	<b>BW</b>	<b>WW</b>	<b>YW</b>	<b>MM</b>	<b>M&amp;G</b>	<b>UDDR</b>	<b>TEAT</b>	<b>SCF</b>	<b>REA</b>	<b>MARB</b>
6.7	0.7	38	71	26	45	1.30	1.30	16.7	0.20	0.25
Act. BW		BW Ratio		Adj. WW		WW Ratio		Age of Dam		
72		102		520		86		7		

**R\$**  
**21.6**

*Calving Ease, goggle eyed horned bull with a ton of quality. This moderate framed bull has as much thickness and uniformity as you can put on one. His 7 year old dam raises quality every year, including the 2022 sale topper that sold to Wunschel Ranch Herefords.*

AHA Breed Average EPDs for 2022 Calves											
CE	BW	WW	YW	MM	M&G	UDDR	TEAT	SCF	REA	MARB	
3.3	2.7	55	88	26	54	1.26	1.27	16.9	0.44	0.13	





**SR IMPACT 2379**

SR 753 OPTIMAID 2001  
— Dam of Lot 379



<b>LOT 379</b>	<b>SR IMPACT 2379 {DLF,HYF,IEF,MSUDF}</b>										
	Calved: 11/18/23			Registration: P44530350				H/P/S/D: POLLED			
<b>BMI\$ 394</b>	CRR C63 IMPACT 870 {DLF,HYF,IEF}					SHF IMPACT 001A C63 {DLF,HYF,IEF,MSUDF,MDF}					
<b>BIIS 475</b>	SR IMPACT 2069 {DLF,HYF,IEF,MSUDF}					CRR 719T ECLIPSE 215 {DLF,HYF,IEF,MSUDF}					
<b>CHBS 131</b>	P44215458 SR 659 OPTIMAID 1134 {DLF,HYF,IEF,MSUDF}					SR RW2 OPTIMAN 0659					
	SR BEEF 465 OPTIMAN 1753 {DLF,HYF,IEF}					SR MISS ACHIEVE 0403					
	SR 753 OPTIMAID 2001					SR BEEF OPTIMAN 1465 {DLF,HYF,IEF}					
	P44215452 SR 659 OPTIMAID 1112 {DLF,HYF,IEF,MSUDF}					SR 064 OPTIMAID 1306 {DLF,HYF,IEF}					
	SR RW2 OPTIMAN 0659						SR RW 1 OPTIMAID 0511				
<b>CE</b>	<b>BW</b>	<b>WW</b>	<b>YW</b>	<b>MM</b>	<b>M&amp;G</b>	<b>UDDR</b>	<b>TEAT</b>	<b>SCF</b>	<b>REA</b>	<b>MARB</b>	<b>R\$ 19.8</b>
5.2	1.6	48	87	28	53	1.20	1.30	19.1	0.21	0.31	
Act. BW		BW Ratio		Adj. WW		WW Ratio		Age of Dam			
62		92		596		98		3			

Calving ease, deep bodied, full pigment bull. This bull combines calving ease and growth with a marbling EPD in the top 11% of the breed. His dam is a beautiful young cow that we are very confident in.



AHA Breed Average EPDs for 2022 Calves											
CE	BW	WW	YW	MM	M&G	UDDR	TEAT	SCF	REA	MARB	
3.3	2.7	55	88	26	54	1.26	1.27	16.9	0.44	0.13	



**SR SANTIAGO MAN 2381**

SR BEEF OPTIMAID 1514  
— Dam of Lot 381



<b>LOT 381</b>	<b>SR SANTIAGO MAN 2381 {DLF,HYF,IEF,MSUDF}</b>										
	Calved: 12/3/23			Registration: 44530291				H/P/S/D: HORNED			
<b>BMI\$ 408</b>	/S HOMETOWN 55630 ET {DLF,HYF,IEF,MSUDF,MDF}					NJW 73S W18 HOMETOWN 10Y ET {SOD}{CHB}{DLF,HYF,IEF,MSUDF,MDC}					
	SR HOME MAN 1956 {DLF,HYF,IEF,MSUDF}					/S LADY DOMINO 652S {DLF,IEF}					
<b>BII\$ 484</b>	P44110403 SR BEEF OPTIMAID 1621 {DOD}					BW 5W 38W BEEF 172Z {DLF,HYF,IEF}					
	SR BEEF OPTIMAID 1514					SR MISS ACHIEVE 0403					
<b>CHBS\$ 132</b>	BW 5W 38W BEEF 172Z {DLF,HYF,IEF}					NJW 76S P20 BEEF 38W ET {SOD}{DLF,HYF,IEF,MSUDF,MDF}					
	43664639 SR OPTIMAID 0911 {DLF,HYF,IEF}					BW 98S M326 BENNITA 5W {DLF,HYF,IEF}					
					SR RW2 OPTIMAN 0659						
					SR MISS ACHIEVE 0133 {DLF,HYF,IEF,MSUDF}						
<b>CE</b>	<b>BW</b>	<b>WW</b>	<b>YW</b>	<b>MM</b>	<b>M&amp;G</b>	<b>UDDR</b>	<b>TEAT</b>	<b>SCF</b>	<b>REA</b>	<b>MARB</b>	
9.2	1.6	41	75	23	44	1.30	1.30	20.2	0.22	0.33	
Act. BW		BW Ratio		Adj. WW		WW Ratio		Age of Dam			
67		95		560		92		8			

**R\$  
33.0**

Check out the R\$. Calving ease horned bull backed by cow quality and performance. He is in the top 10% of the breed for marbling as well as reduced dry matter intake. His high production dam's calves have averaged 104% for weaning, 108% for yearling, 105% for REA, and 123% for marbling.

AHA Breed Average EPDs for 2022 Calves											
CE	BW	WW	YW	MM	M&G	UDDR	TEAT	SCF	REA	MARB	
3.3	2.7	55	88	26	54	1.26	1.27	16.9	0.44	0.13	





**SR IMPACT 2384**

SR RANGE MAID 1921  
— Dam of Lot 384



<b>LOT 384</b>	<b>SR IMPACT 2384 {DLF,HYF,IEF,MSUDF}</b>									
	Calved: 12/15/23			Registration: P44530347				H/P/S/D: POLLED		
BMIS 378	SHF IMPACT 001A C63 {DLF,HYF,IEF,MSUDF,MDF}					GERBER ANODYNE 001A {SOD}{CHB}{DLF,HYF,IEF,MSUDF}				
BIIS 451	CRR C63 IMPACT 870 {DLF,HYF,IEF}					SHF VICKIE R117 W26 ET {DOD}{DLF,HYF,IEF,MSUDF}				
CHBS 105	P43949456 CRR 719T ECLIPSE 215 {DLF,HYF,IEF,MSUDF}					TH 122 71I VICTOR 719T {SOD}{DLF,HYF,IEF,MSUDF,MDF,DBF}				
	SR BEEF 466 OPTIMAN 1671 {DLF,HYF,IEF,MSUDF}					CRR 9126J ECLIPSE 731 {DOD}{DLF,HYF,IEF,MSUDF}				
	SR RANGE MAID 1921					SR BEEF OPTIMAN 1466 {CHB}{DLF,HYF,IEF,MDF}				
	P44110445 SR ACHIEVE OPTIMAID 1309 {DLF,HYF,IEF,MSUDF}					SR 659 OPTIMAID 1134 {DLF,HYF,IEF,MSUDF}				
						SR W035 OPTIMAN 1153 {DLF,HYF,IEF}				
						SR 659 OPTIMAID 1004 {DLF,HYF,IEF,MSUDF}				
CE	BW	WW	YW	MM	M&G	UDDR	TEAT	SCF	REA	MARB
2.6	4.1	52	86	30	56	1.30	1.30	18.9	0.24	0.16
Act. BW		BW Ratio		Adj. WW		WW Ratio		Age of Dam		
73		108		600		104		4		

**R\$  
25.5**

*You will find this one. Youngest bull in the sale, but you won't notice his youth, you will notice his performance and exceptional look. Full pigment, extra length, and dark cherry red. This performance bull is out of another 1671 daughter that adds length and growth.*



AHA Breed Average EPDs for 2022 Calves											
CE	BW	WW	YW	MM	M&G	UDDR	TEAT	SCF	REA	MARB	
3.3	2.7	55	88	26	54	1.26	1.27	16.9	0.44	0.13	

# RED ANGUS REFERENCE SIRES



**SCC JEDI 1018J**

<b>REF X</b>	<b>NAME: SCC JEDI 1018J</b>	<b>DAM</b>	<b>% RED</b>	<b>BW</b>	<b>WW</b>	<b>YW</b>
	<b>CALVED: 1/20/21</b>	<b>AGE</b>	<b>ANGUS</b>	<b>Actual</b>	<b>Adj</b>	<b>Adj</b>
	<b>SIRE: 018A      DAM: B557</b>	<b>7</b>	<b>100</b>	<b>74</b>	<b>692</b>	<b>1142</b>

*1018J was the leadoff bull in the 2022 Stegall Cattle Co. sale that we purchased. He combines calving ease, growth, carcass, and maternal quality. Put all this into a deep bodied, easy fleshing bull that strides better than most Red Angus. Lots of capacity with moderate mature weight, combined with an easy disposition. Calves have not disappointed daughters are soggy and feminine, and the sons speak for themselves as you will see. Deep, moderate, and attractive.*

# RED ANGUS YEARLING BULLS



**R351**

<b>LOT 351</b>	<b>NAME: R351</b>	<b>DAM</b>	<b>% RED</b>	<b>BW</b>	<b>BW</b>	<b>WW</b>	<b>WW</b>
	<b>CALVED: 10/12/23</b>	<b>AGE</b>	<b>ANGUS</b>	<b>Ratio</b>	<b>Adj.</b>	<b>Ratio</b>	<b>Ratio</b>
	<b>SIRE: 1018J      DAM: 512</b>	<b>8</b>	<b>93.75+</b>	<b>67</b>	<b>105</b>	<b>545</b>	<b>87</b>



# RED ANGUS YEARLING BULLS



**R352**

<b>LOT 352</b>	<b>NAME: R352</b>	<b>DAM</b>	<b>% RED</b>	<b>BW</b>	<b>BW</b>	<b>WW</b>	<b>WW</b>
	<b>CALVED: 10/18/23</b>	<b>AGE</b>	<b>ANGUS</b>	<b>Ratio</b>	<b>Ratio</b>	<b>Adj.</b>	<b>Ratio</b>
	<b>SIRE: 1018J</b> <b>DAM: 815</b>	<b>5</b>	<b>93.75+</b>	<b>67</b>	<b>105</b>	<b>599</b>	<b>96</b>



**R353**

<b>LOT 353</b>	<b>NAME: R353</b>	<b>DAM</b>	<b>% RED</b>	<b>BW</b>	<b>BW</b>	<b>WW</b>	<b>WW</b>
	<b>CALVED: 10/23/23</b>	<b>AGE</b>	<b>ANGUS</b>	<b>Ratio</b>	<b>Ratio</b>	<b>Adj.</b>	<b>Ratio</b>
	<b>SIRE: 1018J</b> <b>DAM: 009</b>	<b>3</b>	<b>93.75+</b>	<b>62</b>	<b>97</b>	<b>675</b>	<b>108</b>



# RED ANGUS YEARLING BULLS



**R354**

<b>LOT 354</b>	<b>NAME: R354</b>	<b>DAM</b>	<b>% RED</b>	<b>BW</b>	<b>BW</b>	<b>WW</b>	<b>WW</b>
	<b>CALVED: 10/25/23</b>	<b>AGE</b>	<b>ANGUS</b>	<b>Ratio</b>	<b>Ratio</b>	<b>Adj.</b>	<b>Ratio</b>
	<b>SIRE: 1018J</b> <b>DAM: 714</b>	<b>6</b>	<b>93.75+</b>	<b>68</b>	<b>106</b>	<b>606</b>	<b>97</b>



**R355**

<b>LOT 355</b>	<b>NAME: R355</b>	<b>DAM</b>	<b>% RED</b>	<b>BW</b>	<b>BW</b>	<b>WW</b>	<b>WW</b>
	<b>CALVED: 10/27/23</b>	<b>AGE</b>	<b>ANGUS</b>	<b>Ratio</b>	<b>Ratio</b>	<b>Adj.</b>	<b>Ratio</b>
	<b>SIRE: 1018J</b> <b>DAM: 604</b>	<b>7</b>	<b>93.75+</b>	<b>66</b>	<b>103</b>	<b>632</b>	<b>101</b>



# RED ANGUS YEARLING BULLS



**R356**

<b>LOT 356</b>	<b>NAME: R356</b>	<b>DAM</b>	<b>% RED</b>	<b>BW</b>	<b>BW</b>	<b>WW</b>	<b>WW</b>
	CALVED: 11/3/23	<b>AGE</b>	<b>ANGUS</b>	<b>Ratio</b>	<b>Ratio</b>	<b>Adj.</b>	<b>Ratio</b>
	SIRE: 1018J      DAM: 004	<b>3</b>	<b>93.75+</b>	<b>62</b>	<b>97</b>	<b>669</b>	<b>107</b>



**R357**

<b>LOT 357</b>	<b>NAME: R357</b>	<b>DAM</b>	<b>% RED</b>	<b>BW</b>	<b>BW</b>	<b>WW</b>	<b>WW</b>
	CALVED: 11/7/23	<b>AGE</b>	<b>ANGUS</b>	<b>Ratio</b>	<b>Ratio</b>	<b>Adj.</b>	<b>Ratio</b>
	SIRE: 1018J      DAM: 907	<b>4</b>	<b>93.75+</b>	<b>58</b>	<b>91</b>	<b>608</b>	<b>97</b>





# RED ANGUS YEARLING BULLS



**R360**

<b>LOT 360</b>	<b>NAME: R360</b>	<b>DAM</b>	<b>% RED</b>	<b>BW</b>	<b>BW</b>	<b>WW</b>	<b>WW</b>
	CALVED: 11/19/23	<b>AGE</b>	<b>ANGUS</b>	<b>Ratio</b>	<b>Ratio</b>	<b>Adj.</b>	<b>Ratio</b>
	SIRE: 1018J      DAM: 804	<b>5</b>	<b>93.75+</b>	<b>64</b>	<b>100</b>	<b>604</b>	<b>97</b>



**R361**

<b>LOT 361</b>	<b>NAME: R361</b>	<b>DAM</b>	<b>% RED</b>	<b>BW</b>	<b>BW</b>	<b>WW</b>	<b>WW</b>
	CALVED: 11/26/23	<b>AGE</b>	<b>ANGUS</b>	<b>Ratio</b>	<b>Ratio</b>	<b>Adj.</b>	<b>Ratio</b>
	SIRE: 1018J      DAM: 504	<b>8</b>	<b>93.75+</b>	<b>63</b>	<b>98</b>	<b>573</b>	<b>92</b>



# RED ANGUS YEARLING BULLS



R362

<b>LOT</b> <b>362</b>	<b>NAME: R362</b>	<b>DAM</b>	<b>% RED</b>	<b>BW</b>	<b>BW</b>	<b>WW</b>	<b>WW</b>
	<b>CALVED: 12/10/23</b>	<b>AGE</b>	<b>ANGUS</b>	<b>Ratio</b>	<b>Ratio</b>	<b>Adj.</b>	<b>Ratio</b>
	<b>SIRE: 1018J</b> <b>DAM: 911</b>	<b>4</b>	<b>93.75+</b>	<b>55</b>	<b>86</b>	<b>590</b>	<b>94</b>



R364

<b>LOT</b> <b>364</b>	<b>NAME: R364</b>	<b>DAM</b>	<b>% RED</b>	<b>BW</b>	<b>BW</b>	<b>WW</b>	<b>WW</b>
	<b>CALVED: 12/10/23</b>	<b>AGE</b>	<b>ANGUS</b>	<b>Ratio</b>	<b>Ratio</b>	<b>Adj.</b>	<b>Ratio</b>
	<b>SIRE: 1018J</b> <b>DAM: 002</b>	<b>3</b>	<b>93.75+</b>	<b>68</b>	<b>106</b>	<b>776</b>	<b>124</b>



## COMMERCIAL HEIFERS

These heifers were chosen off the very top of our commercial replacements. We hand selected each of these as the ones we would pick to make cows.

They have been raised in rough country, weaned on long hay for 5 days and then turned back out on native pasture. We believe this is a pretty elite group of heifers that will pay for themselves multiple times in the years to come.

There are solid reds, red mottle-faced, red-cheeked and white faces. We will sort these heifers in groups of 5 based on like kind.

Each lot of 5 will have a silent auction sheet just like the bulls. The bidding format will be based on the value of 1 head, with the buyer recognizing that it will be the value of the winning bid times 5 for the whole lot.

All heifers have been Brucellosis vaccinated and 3 rounds of Vista 5L5 and Vision 8.



**Lot 1: 5 Commercial Hereford Heifers**



**Lot 2: 5 Commercial Red Heifers**



**Lot 3: 5 Commercial Red-Cheeked and Mottle-Faced Heifers**



# SNEDDEN RANCH

P.O. Box 129, Maricopa, CA 93252

*Address Service Requested*



**SATURDAY, OCTOBER 12, 2024**

**SNEDDEN RANCH ANNUAL BULL SALE**

**AT THE RANCH • MARICOPA, CA**



**SALE BULL VIDEOS: [SNEDDENRANCH.COM](http://SNEDDENRANCH.COM)**