



TOWNSEND • MONTANA



MONTANA MADE
PRODUCTION SALE

SATURDAY, SEPTEMBER 21, 2024
SMART AUCTIONS ONLINE SALE & RANCH OPEN HOUSE



Sale cattle will be on display Friday afternoon, September 20, and all day Saturday, September 21
Please join us for our open house, supper and watch the online sale closeout at 5pm MST Saturday



MONTANA MADE PRODUCTION SALE

SATURDAY, SEPTEMBER 21, 2024
SMART AUCTIONS ONLINE SALE
& RANCH OPEN HOUSE

THE EHLKE ADVANTAGE

ACCURACY

We believe the only good kind of data is accurate data! When it comes to utilizing EPDs and performance data in our herd we recognize these resources as tools that work side by side with phenotype selection. We realize the importance of accurate records and how that information plays a role in building a successful, predictable cow herd.

1ST GENERATION

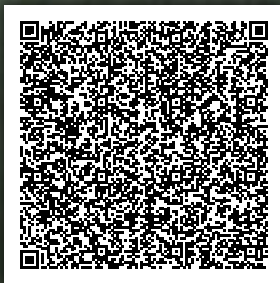
Our family is proud to be first generation ranchers and have enjoyed watching our kids grow up in the cattle business. We are excited to have the second generation involved on the ranch as we continue to grow. **Starting from humble beginnings has challenged us to work hard and expect more from our cow herd — every cow has to earn her keep!**

OUTCROSS

When searching for new genetics to add to our herd **we know the importance of powerful, outcross genetics that will perform with predictability.** If you're looking for an outcross or something different to add to your herd, we look forward to the opportunity to get to know your operation and help create your success!

Thank you to our current/past customers for purchasing cattle from our program to make a difference in yours. We appreciate your confidence and support. Be sure to reach out with any questions you may have. Our family is truly blessed to be involved in agriculture and with this great breed of cattle.

Warmest regards, *the Ehlke Family*



**Experience Our Hereford Journey:
Watch the Video!**



3925 MT Highway 284 / P.O. Box 1487 / Townsend, MT 59644
info@ehlkeherefords.com / www.ehlkeherefords.com
Connect with us online!



RANCH OPEN HOUSE SCHEDULE

Sale Closeout starts at 5pm on Saturday, September 21st

Sale Animals will be on display the afternoon of Friday, September 20th and all day Saturday, September 21st
 Supper and Social at 5pm
 Watch Online Sale Closeout

SALE INFORMATION & FORMAT [smartauctions](http://smartauctions.com)

Ehlke Montana Made Sale will be live on Tuesday, September 17th, with closeout on Saturday, September 21st starting at 5pm MST – racehorse style. **Visit [smartauctions.co](http://smartauctions.com) to sign up as a bidder and Text EHLKE to 76278 to receive mobile alerts.**

Dustin Layton, Layton Auction Services/Smart Auctions 405-464-2455
 SmartAuctions Customer Service 937-733-6000

SALE DAY PHONES & INFORMATION

Mark Ehlke 406-439-4311
 Lacey Ehlke Jepson 406-439-1544
 Jane’a Ehlke Merkel 406-202-2766
 Della Ehlke 406-439-4300
info@ehlkeherefords.com

SALE REPRESENTATIVES

Dustin Layton, Smart Auctions 405-464-2455
 Kevin Murnin, AHA, *Hereford World* 406-853-4638
 Cord Weinheimer, AHA, *Hereford World* 830-456-3749
 John Goggins, *Western Livestock Reporter* 406-698-4159
 Marc & Jill Hotchkiss, *Hereford America* 605-490-1513
 Devin Murnin, *Western Livestock Journal* 406-696-1502

ANIMALS ON DISPLAY

Pre-Sale the afternoon of Friday, September 20 and all day Saturday, September 21
 Sale will be live on Tuesday, September 17th, with closeout on Saturday, September 21st at 5pm MST

DELIVERY

Bob Woolsey Trucking 406-670-1877
 We will work with you to provide the most cost-effective delivery possible. Usually, that will be to central points at a shared cost. For Canadian buyers, we will deliver up to the nearest point of entry.

LIVESTOCK INSURANCE

Devin Murnin 406-696-1502

SALE UPDATES

Corrections or additions of any information contained in the sale catalog will be provided via supplemental information and will take precedence over any printed material.

DIRECTIONS

Ranch Location Address: 3925 Highway 284, Townsend, MT 59644
 Entering Townsend from either direction you will be on Front St (Highway 287), turn East at the flashing light onto Broadway St (Highway 12) for 2 miles and turn left at the next flashing light, head North on Highway 284 for another 2.5 miles, Ranch turnoff is on your RIGHT with a white archway with two grain silos. Signs will be up.

AIR TRAVEL

Helena Regional Airport is approx. 40 miles from the ranch, and Bozeman Yellowstone International Airport in Belgrade is approx. 60 miles from the ranch.

MONTANA MADE PRODUCTION SALE

SALE INFORMATION



LODGING

Mustang Motel (*cabins are bigger than regular rooms*) . . . 406-266-3491
412 N Front Street Townsend, MT (4 miles from ranch)

Sacajawea Hotel 406-285-6515
5 N Main Street Three Forks, MT (approximately 35 miles from ranch)

Most hotel chains are available in both Helena (40 miles) and
Belgrade/Bozeman (60 miles).

LIABILITY

Anyone attending the Open House/Sale Close out does so at their own
risk and without liability on the part of the owners or their employees.

ACKNOWLEDGMENTS

Chuteside Vet, Three Forks, MT / Herd Vet
Big Sky Large Animal Clinic, Willow Creek, MT / Herd Vet
Jane'a Merkel / Sale Cattle Photos and Videos, and Ranch Photos
Livestock Link / Video Catalog EPDs
Will Malcolm, Sleeping Giant Genetics / Embryologist
AHA Creative Services / Sale Catalog

GENOMIC EPDS

All sale cattle were genetically tested to provide
genomic enhanced EPDs. EPDs are current as
of catalog printing but do change slightly periodically. You are able to
view an animal's most current EPDs on the AHA website.



TERMS AND CONDITIONS

Bidder/User Registration and Responsibility: Buyers (a.k.a. users)
must register to participate. Establishing a user account or bidding
or buying at this auction/sale acknowledges bidders consent to
the terms and conditions as outlined below. Bidders will be solely
responsible for any and all actions taken with their bidding account
including all purchase amounts, freight, and any costs associated with
collecting same.

Cattle will sell under the standard terms and conditions
recommended by the American Hereford Association. Invoices will be
sent via Smart Auctions immediately following the close of the sale,
payment is due per their terms, or can be made at the ranch for those
in attendance.

Terms of all sales will be cash unless arrangements are made between
purchaser and seller prior to sale. Individual health papers will be
furnished with each animal permitting shipment to any state.

Certificates of registration are all in order and will be transferred
to the new owner when payment is made. All sale cattle have DNA
tested to be free of any known genetic diseases or defects recognized,
parentage has been verified and EPDs genomically enhanced. EPDs
are current as of catalog print date.

The animal becomes the property of the purchaser as soon as sold
but it shall be the responsibility of the seller to see that animals are
properly cared for until delivered to the purchaser.

Any death or injury after the animal is sold is at the buyer's risk.
Buyers are encouraged to insure their purchases. Livestock mortality
insurance can be purchased from Devin Murnin 406-696-1502.



Mark and Della Ehlke



Jake, Jane'a, McCoy and Maverick Merkel



Lacey and Zach Jepson



Pat Reiser and Andrew Arnold

Thank You

TO OUR RANCH HELP.
WE COULDN'T DO IT WITHOUT YOU!



HEIFER CALVES



Since our operation is primarily a fall calving herd, there are not a lot of spring born heifers, but these 3 are certainly top of the group.



LJE 203Z FAITH 5014 — Dam of Lot 1

Lot 1

1

LJE 65J *Mattie 42*

{HYP,DBP} | POLLED | BD: 2/11/24 | P44567266 | BW: 80 LB.

INNISFAIL WHR X651/723 4013 ET HARVIE DAN SNIPER 203Z
MOHICAN DOW JONES 65J LJE 203Z FAITH 5014
 MOHICAN MATTIE 403E ET LJE 11X MISS ANCHOR 008A



CE	BW	WW	YW	SC	MILK	M&G	CEM	FAT	REA	MARB	BMI\$	BIIS	CHBS
1.3	1.7	64	99	1.1	33	64	2.3	0.032	0.46	0.17	\$360	\$445	\$127

Moderate framed Mohican Dow Jones 65J daughter with a ton of depth and dimension. A full brother was a top seller in our spring bull offering. 42's dam has done a great job here. A real solid EPD profile here in addition to being well put together; just a very good calf.

2

E 65J *Mattie M16*

{DLF,HYF,IEF,MSUDF,MDF,DBF} | POLLED | BD: 2/11/24 | P44567273 | BW: 75 LB.

INNISFAIL WHR X651/723 4013 ET E BRAXTON 719
MOHICAN DOW JONES 65J E T719 LADY BRAXTON 8013ET
 MOHICAN MATTIE 403E ET HARVIE E MS FIREFLY ET 19Z



CE	BW	WW	YW	SC	MILK	M&G	CEM	FAT	REA	MARB	BMI\$	BIIS	CHBS
3.1	2.5	56	89	0.8	22	50	3.7	0.012	0.72	0.17	\$334	\$408	\$131

Another Dow Jones daughter that is very powerfully made, yet feminine through her front. M16 is a dark red, highly pigmented and flat out classy made heifer. A solid set of numbers just adds more to the future of this exceptional heifer.



HARVIE E MS FIREFLY ET 19Z — Grandam of Lot 2

Lot 2

HEIFER CALVES



LJE 332A DIVA 4D — Dam of Lot 3

Lot 3

3

LJE 35K *Miss Edith* 7M

| POLLED | BD: 2/28/24 | P44567254 | BW: 85 LB.

JDH AH BENTON 8G ET ILR HOMETOWN 332A ET
JDH MRD 54E 8G BENTON 35K ET **LJE 332A DIVA 4D**
 JDH MS 40B TRUST 3373 54E LJE 337U DIVA X53

The 1st offspring we have offered out of our Benton 35K bull, whose first calf crop is very impressive. The Benton bloodline progeny have been very well received across the country. 7M's dam is the result of combining two of our most proven blood lines through the years. Just a real solid prospect here.



CE	BW	WW	YW	SC	MILK	M&G	CEM	FAT	REA	MARB	BMI\$	BIIS	CHBS
0.1	4.0	64	110	0.7	27	59	0.8	0.002	0.74	0.09	\$391	\$469	\$138



FALL YEARLING OPEN HEIFERS



Lot 4

4

E 65J *Mattie* L23

{DLF,HYF,IEF,MSUDF,MDF,DBF} | POLLED | BD: 8/9/23 | P44514521 | BW: 76 LB.

INNISFAIL WHR X651/723 4013 ET ILR H MILES 4140B ET
MOHICAN DOW JONES 65J **E 4140B MS RILEY F57**
 MOHICAN MATTIE 403E ET E 337U DIVA Y37



CE	BW	WW	YW	SC	MILK	M&G	CEM	FAT	REA	MARB	BMI\$	BIIS	CHBS
6.7	1.9	66	103	0.7	34	67	6.6	-0.008	0.72	0.14	\$376	\$459	\$156

Here is a great example on what Dow Jones 65J is capable of. This heifer has been a standout since birth. Just overall, very complete, with an outstanding maternal background. L23 has a very nice EPD profile as well. Very good prospect here!

5

E A250 *Kate* L35

{DLF,HYF,IEF,MSUDF,MDF,DBF} | POLLED | BD: 8/12/23 | P44514488 | BW: 82 LB.

EFBEEF TFL U208 TESTED X651 ET ILR HOMETOWN 332A ET
EFBEEF X651 TESTED A250 **E 332A EDNA D160**
 EFBEEF 6378 KATE W484 ILR 156T IRON LADY 486B ET



CE	BW	WW	YW	SC	MILK	M&G	CEM	FAT	REA	MARB	BMI\$	BIIS	CHBS
2.6	1.7	59	93	1.8	34	63	-0.9	0.052	0.54	0.49	\$451	\$555	\$150

Pay special attention here; an A250 out of a granddaughter of the infamous Beth 1L cow! With all the genetic merit L35 brings to bear, she should probably never leave the ranch, but we are committed to offering our best. A real genetic gem here.



E 332A EDNA D160 — Dam of Lot 5

Lot 5

FALL YEARLING OPEN HEIFERS



E 1319 DIVA D05 ET — Dam of Lot 6



C GKB GUARDIAN 1015 ET — Sire of Lots 6 & 7



Lot 6

6

E 1015 *Belle* L48

{DLF,HYF,IEF,MSUDF,MDF,DBF} | POLLED | BD: 8/17/23 | P44514496 | BW: 80 LB.

LOEWEN GENESIS G16 ET
C GKB GUARDIAN 1015 ET
 C CJC BELLE AIR LASS 8037 ET

C 19D NOTICE ME 1319 ET
E 1319 DIVA D05 ET
 LJE 337U DIVA X48



CE	BW	WW	YW	SC	MILK	M&G	CEM	FAT	REA	MARB	BMI\$	BIIS	CHBS
5.5	3.0	59	94	1.7	26	55	0.3	0.022	0.51	0.13	\$370	\$447	\$110

A nicely balanced daughter of the Guardian 1015 bull here whose dam, the D05 cow, goes back to some very influential Colyer breed icons as well. L48 traces back to our old 337U bull who produced some outstanding females.

7

E 1015 *Belle* 3016 ET

{DLF,HYF,IEF,MSUDF,MDF,DBF} | POLLED | BD: 8/6/23 | P44523058 | BW: 80 LB.

LOEWEN GENESIS G16 ET
C GKB GUARDIAN 1015 ET
 C CJC BELLE AIR LASS 8037 ET

HARVIE SAFNBFI COLATERAL 337U
E 337U DIVA Y37
 E T719 LADY BRAXTON W37



CE	BW	WW	YW	SC	MILK	M&G	CEM	FAT	REA	MARB	BMI\$	BIIS	CHBS
9.4	1.1	53	79	1.0	23	49	0.4	0.062	0.47	0.16	\$491	\$572	\$98

3016 is bred similar to L48 as she traces back to Colateral 337U as well. One does have to admire these Guardian daughters for their style and make-up. 3016 is short marked with good pigment. These two heifers will be breeding tools for sure.



Lot 7



E 337U DIVA Y37 — Dam of Lot 7

BRED HEIFERS

This section of bred heifers represents the top cut of each contemporary sire group. We feel these heifers are a true representation of our program and they will excel no matter where they go. This group is worthy of serious appraisal.



Lot 8

8

E 332A Edna K19

{DLF,HYF,IEF,MSUDF,MDF,DBF} | POLLED | BD: 8/15/22 | P44423081 | BW: 78 LB.

NJW 73S W18 HOMETOWN 10Y ET KT BUILT TUFF 1010
ILR HOMETOWN 332A ET **ERNST MS BUILT TUFF 499**
 NJW 43T 4037 FOREVER EDNA 28X ET ERNST MS 8619 DOMINO 248



CE	BW	WW	YW	SC	MILK	M&G	CEM	FAT	REA	MARB	BMI\$	BIIS	CHBS
6.3	1.7	54	87	0.7	25	52	1.0	-0.008	0.56	0.25	\$396	\$476	\$135

Bred AI on 4-18-24 to E 6112 Sooner K4, then pasture exposed from 6-11-24 to 7-31-24 to JDH MRD 54E 8G Benton 35K ET. Ultrasound shows safe in calf (heifer) to AI exposure.

9

E 20C Ursula K11

{DLF,HYF,IEF,MSUDF,MDF,DBF} | POLLED | BD: 8/6/22 | P44423066 | BW: 83 LB.

OTAPAWA SKYMATE 2046 (ET) E ILR ATHENS D98
RSK E 2046 DIGBY ET 20C **E D98 BIG SKY MISS F69**
 HARVIE MISS FIREFLY 51F E T719 LADT BRAXTON Z855



CE	BW	WW	YW	SC	MILK	M&G	CEM	FAT	REA	MARB	BMI\$	BIIS	CHBS
-0.8	4.0	49	85	0.6	33	58	-0.7	-0.038	0.50	0.00	\$336	\$392	\$111

Bred AI on 4-19-24 to SHF Harvest D287 H033 ET, then pasture exposed from 6-11-24 to 7-31-24 to JDH MRD 54E 8G Benton 35K ET. Ultrasound shows safe in calf (bull) to AI exposure.



Lot 9

BRED HEIFERS



E 332A EDNA J48

— Maternal sib sold in Montana Made 2023

Lot 10

10

E D83 *Shiney* K90

| POLLED | BD: 9/22/22 | P44423088 | BW: 82 LB.

E 4L SCHATZEE ET Z712
E Z712 SCHATZEE D83
 EPHR LINNETTE 530T

C ETF WILDCAT 4248 ET
CHURCHILL LADY 6336D ET
 LJE 337U DIVA X48



CE	BW	WW	YW	SC	MILK	M&G	CEM	FAT	REA	MARB	BMI\$	BIIS	CHBS
0.6	4.1	66	107	0.7	20	53	1.2	0.032	0.56	0.05	\$343	\$421	\$111

Bred AI on 5-6-24 to SHF Harvest D287 H033 ET, then pasture exposed from 6-11-24 to 7-31-24 to JDH MRD 54E 8G Benton 35K ET. Ultrasound shows safe in calf (heifer) to AI exposure.

11

LJE D83 *Shiney* 7K

{DLF,HYF,IEF,MSUDF,MDF,DBF} | POLLED | BD: 8/27/22 | P44423085 | BW: 68 LB.

E 4L SCHATZEE ET Z712
E Z712 SCHATZEE D83
 EPHR LINNETTE 530T

E BRAXTON 719
LJE T719 MARLEY A050
 E 337U DIVA Y812



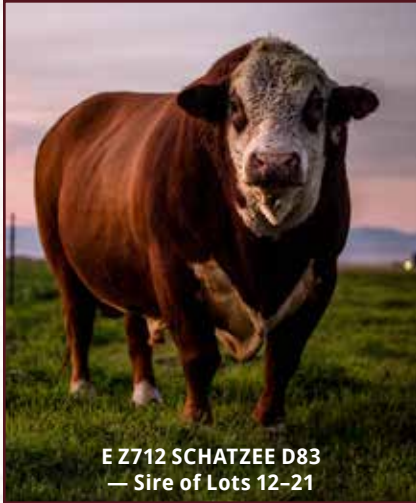
CE	BW	WW	YW	SC	MILK	M&G	CEM	FAT	REA	MARB	BMI\$	BIIS	CHBS
7.1	2.3	56	87	0.2	19	47	4.4	0.052	0.54	0.09	\$352	\$423	\$112

Bred AI on 4-19-24 to JDH MRD 54E 8G Benton 35K ET, then pasture exposed from 6-11-24 to 7-31-24 to JDH MRD 54E 8G Benton 35K ET. Ultrasound shows safe in calf to AI exposure.



Lot 11

BRED HEIFERS



E Z712 SCHATZEE D83
— Sire of Lots 12-21



Lot 12

12

LJE D83 *Shiney* 8K

{DLF,HYF,IEF,MSUDF,MDF,DBF} | POLLED | BD: 8/29/22 | P44423039 | BW: 80 LB.

E 4L SCHATZEE ET Z712
E Z712 SCHATZEE D83
EPHR LINNETTE 530T

ILR HOMETOWN 332A ET
LJE 332A EDNA 13F
LJE A012 LADY BRAXTON 015C



CE	BW	WW	YW	SC	MILK	M&G	CEM	FAT	REA	MARB	BMI\$	BIIS	CHBS
-0.4	3.2	62	105	0.8	16	47	-2.2	-0.018	0.79	0.00	\$282	\$347	\$115

Bred AI on 5-6-24 to SHF Harvest D287 H033 ET, then pasture exposed from 6-11-24 to 7-31-24 to JDH MRD 54E 8G Benton 35K ET. Ultrasound shows safe in calf (heifer) to AI exposure.

13

LJE D83 *Shiney* 9K

{DLF,HYF,IEF,MSUDF,MDF,DBF} | POLLED | BD: 8/31/22 | P44423086 | BW: 84 LB.

E 4L SCHATZEE ET Z712
E Z712 SCHATZEE D83
EPHR LINNETTE 530T

HARVIE GUNNER 54Z
LJE 54Z LADY GUNNER 4F
LJE Z712 GRACE 11D



CE	BW	WW	YW	SC	MILK	M&G	CEM	FAT	REA	MARB	BMI\$	BIIS	CHBS
-2.5	4.1	63	100	0.7	20	52	-5.2	0.042	0.55	-0.01	\$279	\$348	\$94

Bred AI on 4-19-24 to SHF Harvest D287 H033 ET, then pasture exposed from 6-11-24 to 7-31-24 to JDH MRD 54E 8G Benton 35K ET. Ultrasound shows safe in calf to pasture exposure.



Lot 13

BRED HEIFERS



Lot 14

14

E D83 Shiney K57

{DLF,HYF,IEF,MSUDF,MDF,DBF} | POLLED | BD: 8/27/22 | P44423077 | BW: 92 LB.

E 4L SCHATZEE ET Z712
E Z712 SCHATZEE D83
 EPHR LINNETTE 530T

E BRAXTON 719
E T719 LADY BRAXTON A039
 CHURCHILL LADY 1172Y ET



CE	BW	WW	YW	SC	MILK	M&G	CEM	FAT	REA	MARB	BMI\$	BIIS	CHBS
-4.4	6.4	72	113	0.4	21	57	0.7	0.032	0.71	0.03	\$306	\$385	\$134

Bred AI on 4-18-24 to HUTH CLC WF Deluxe K016. then pasture exposed from 6-11-24 to 7-31-24 to JDH MRD 54E 8G Benton 35K ET. Ultrasound shows safe in calf (heifer) to AI exposure.

15

E D83 Shiney K61

{DLF,HYF,IEF,MSUDF,MDF,DBF} | POLLED | BD: 8/31/22 | P44423103 | BW: 72 LB.

E 4L SCHATZEE ET Z712
E Z712 SCHATZEE D83
 EPHR LINNETTE 530T

ILR H MILES 4140B ET
E 4140B MS RILEY F57
 E 337U DIVA Y37



CE	BW	WW	YW	SC	MILK	M&G	CEM	FAT	REA	MARB	BMI\$	BIIS	CHBS
8.0	1.7	58	88	0.4	27	56	5.2	0.032	0.56	0.06	\$376	\$449	\$122

Bred AI on 4-18-24 to E 6112 Sooner K4, then pasture exposed from 6-11-24 to 7-31-24 to JDH MRD 54E 8G Benton 35K ET. Ultrasound shows safe in calf to pasture exposure.



Lot 15

BRED HEIFERS



16

E D83 Shiney K64

{DLF,HYF,IEF,MSUDF,MDF,DBF} | POLLED | BD: 9/3/22 | P44423054 | BW: 90 LB.

E 4L SCHATZEE ET Z712
E Z712 SCHATZEE D83
 EPHR LINNETTE 530T

E BRAXTON 719
E T719 LADY BRAXTON D3
 E 337U DIVA B048



CE	BW	WW	YW	SC	MILK	M&G	CEM	FAT	REA	MARB	BMI\$	BIIS	CHBS
-5.7	5.6	63	94	-0.1	19	50	-0.2	-0.018	0.57	0.00	\$350	\$420	\$102

Bred AI on 4-19-24 to SHF Harvest D287 H033 ET, then pasture exposed from 6-11-24 to 7-31-24 to JDH MRD 54E 8G Benton 35K ET. Ultrasound shows safe in calf (heifer) to AI exposure.

17

E D83 Shiney K67

{DLF,HYF,IEF,MSUDF,MDF,DBF} | POLLED | BD: 9/3/22 | P44501010 | BW: 90 LB.

E 4L SCHATZEE ET Z712
E Z712 SCHATZEE D83
 EPHR LINNETTE 530T

HARVIE DAN SNIPER 203Z
E 203Z DANELLE E99
 E 38T JUDI C051



CE	BW	WW	YW	SC	MILK	M&G	CEM	FAT	REA	MARB	BMI\$	BIIS	CHBS
0.4	4.1	62	101	0.7	26	57	2.1	0.022	0.49	0.10	\$439	\$521	\$121

Bred AI on 4-18-24 to SHF Harvest D287 H033 ET, then pasture exposed from 6-11-24 to 7-31-24 to JDH MRD 54E 8G Benton 35K ET. Ultrasound shows safe in calf (heifer) to AI exposure.



BRED HEIFERS



18

E D83 Shiney K78

{DLF,HYF,IEF,MSUDF,MDF,DBF} | POLLED | BD: 9/8/22 | P44501272 | BW: 92 LB.

E 4L SCHATZEE ET Z712
E Z712 SCHATZEE D83
 EPHR LINNETTE 530T

E BRAXTON 719
E T719 LADY BRAXTON D10
 E 337U DIVA 09B ET



CE	BW	WW	YW	SC	MILK	M&G	CEM	FAT	REA	MARB	BMI\$	BIIS	CHBS
0.6	4.6	56	90	0.2	24	52	4.6	0.042	0.74	0.03	\$359	\$425	\$123

Bred AI on 4-18-24 to HUTH CLC WF Deluxe K016. then pasture exposed from 6-11-24 to 7-31-24 to JDH MRD 54E 8G Benton 35K ET. Ultrasound shows safe in calf (heifer) to AI exposure.

19

E D83 Shiney K89

{DLF,HYF,IEF,MSUDF,MDF,DBF} | POLLED | BD: 9/20/22 | P44423031 | BW: 72 LB.

E 4L SCHATZEE ET Z712
E Z712 SCHATZEE D83
 EPHR LINNETTE 530T

MOHICAN TEN GAUGE 233A
MOHICAN MATTIE 122D
 GRANDVIEW CMR 1L MATTIE Y490ET



CE	BW	WW	YW	SC	MILK	M&G	CEM	FAT	REA	MARB	BMI\$	BIIS	CHBS
5.1	1.8	55	94	0.6	21	49	2.6	0.072	0.56	-0.03	\$377	\$442	\$101

Bred AI on 4-19-24 to JDH MRD 54E 8G Benton 35K ET, then pasture exposed from 6-11-24 to 7-31-24 to JDH MRD 54E 8G Benton 35K ET. Ultrasound shows safe in calf (heifer) to AI exposure.



BRED HEIFERS



Lot 20

20

LJE D83 *Shiney* 11K

{DLF,HYF,IEF,MSUDF,MDF,DBF} | POLLED | BD: 9/4/22 | P44423113 | BW: 95 LB.

E 4L SCHATZEE ET Z712
E Z712 SCHATZEE D83
 EPHR LINNETTE 530T

C MILES MCKEE 2103 ET
ILR 357 LADY SMILES 725
 ILR KJ LADY VICKY 357A ET



CE	BW	WW	YW	SC	MILK	M&G	CEM	FAT	REA	MARB	BMI\$	BIIS	CHBS
-3.1	6.2	67	112	-0.1	19	53	-1.7	0.022	0.66	0.04	\$355	\$433	\$128

Bred AI on 5-7-24 to HUTH CLC WF Deluxe K016, then pasture exposed from 6-11-24 to 7-31-24 to JDH MRD 54E 8G Benton 35K ET. Ultrasound shows safe in calf to pasture exposure.

21

LJE D83 *Shiney* 232

{DLF,HYF,IEF,MSUDF,MDF,DBF} | POLLED | BD: 10/1/22 | P44423042 | BW: 85 LB.

E 4L SCHATZEE ET Z712
E Z712 SCHATZEE D83
 EPHR LINNETTE 530T

E MC 7W SOLID ET Z833
LJE Z833 MARVEL 710
 LJE U832 MS BOULDER Y21



CE	BW	WW	YW	SC	MILK	M&G	CEM	FAT	REA	MARB	BMI\$	BIIS	CHBS
-6.5	6.1	63	106	0.6	16	47	0.0	0.052	0.28	0.03	\$262	\$334	\$105

Bred AI on 4-19-24 to SHF Harvest D287 H033 ET, then pasture exposed from 6-11-24 to 7-31-24 to JDH MRD 54E 8G Benton 35K ET. Ultrasound shows safe in calf (bull) to AI exposure.



Lot 21

BRED HEIFERS



22

E 98G *Clara* K32

{DLF,HYF,IEF,MSUDF,MDF,DBF} | POLLED | BD: 8/18/22 | P44423096 | BW: 75 LB.

NJW 160B 028X HISTORIC 81E ET TH 512X 719T PLAYMAKER 14Z
NJW 202C 81E STEWARD 98G ET E 14Z PLAYGIRL C023
 NJW 160Z 8Y HOME MAKER 202C E 337U DIVA Y840



CE	BW	WW	YW	SC	MILK	M&G	CEM	FAT	REA	MARB	BMI\$	BIIS	CHBS
-0.7	2.1	53	76	0.5	29	55	0.2	-0.008	0.11	0.10	\$391	\$464	\$91

Bred AI on 4-20-24 to SHF Harvest D287 H033 ET, then pasture exposed from 6-11-24 to 7-31-24 to JDH MRD 54E 8G Benton 35K ET. Ultrasound shows safe in calf (bull) to AI exposure.

23

E 98G *Clara* K59

{DLF,HYF,IEF,MSUDF,MDF,DBF} | POLLED | BD: 8/28/22 | P44423060 | BW: 63 LB.

NJW 160B 028X HISTORIC 81E ET HARVIE SAFNBFI COLATERAL 337U
NJW 202C 81E STEWARD 98G ET E 337U DIVA B056
 NJW 160Z 8Y HOME MAKER 202C E 7W LADY TAILOR Y625



CE	BW	WW	YW	SC	MILK	M&G	CEM	FAT	REA	MARB	BMI\$	BIIS	CHBS
3.3	3.1	55	86	0.9	23	50	-0.3	0.052	0.50	0.12	\$342	\$415	\$117

Bred AI on 4-19-24 to SHF Harvest D287 H033 ET, then pasture exposed from 6-11-24 to 7-31-24 to JDH MRD 54E 8G Benton 35K ET. Ultrasound shows safe in calf (bull) to AI exposure.



BRED HEIFERS



24

E 98G Clara K73

{DLF,HYF,IEF,MSUDF,MDF,DBF} | POLLED | BD: 9/5/22 | P44423076 | BW: 92 LB.

NJW 160B 028X HISTORIC 81E ET HARVIE SAFNBFI COLATERAL 337U
NJW 202C 81E STEWARD 98G ET **E 337U DIVA A089**
 NJW 160Z 8Y HOME MAKER 202C E P425 SHIRLEY U862



CE	BW	WW	YW	SC	MILK	M&G	CEM	FAT	REA	MARB	BMI\$	BIIS	CHBS
-5.2	6.4	65	98	1.1	28	61	-0.1	-0.028	0.44	0.11	\$318	\$396	\$126

Bred AI on 5-6-24 to SHF Harvest D287 H033 ET, then pasture exposed from 6-11-24 to 7-31-24 to JDH MRD 54E 8G Benton 35K ET. Ultrasound shows safe in calf (heifer) to AI exposure.

25

E 98G Clara K75

{DLF,HYF,IEF,MSUDF,MDF,DBF} | POLLED | BD: 9/7/22 | P44423082 | BW: 80 LB.

NJW 160B 028X HISTORIC 81E ET E BRAXTON 719
NJW 202C 81E STEWARD 98G ET **E 719 LADY BRAXTON D6**
 NJW 160Z 8Y HOME MAKER 202C E 14Z PLAYGIRL B018



CE	BW	WW	YW	SC	MILK	M&G	CEM	FAT	REA	MARB	BMI\$	BIIS	CHBS
2.1	2.4	47	62	0.1	31	55	-1.2	-0.008	0.33	0.10	\$351	\$414	\$105

Bred AI on 4-20-24 to JDH MRD 54E 8G Benton 35K ET, then pasture exposed from 6-11-24 to 7-31-24 to JDH MRD 54E 8G Benton 35K ET. Ultrasound shows safe in calf to pasture exposure.



BRED HEIFERS



26

E 98G *Clara* K91

{DLF,HYF,IEF,MSUDF,MDF,DBF} | POLLED | BD: 9/22/22 | P44423049 | BW: 85 LB.

NJW 160B 028X HISTORIC 81E ET E Z712 SCHATZEE D31
NJW 202C 81E STEWARD 98G ET **E D31 JAN F130**
 NJW 160Z 8Y HOME MAKER 202C E M211 LADY RANGER U855



CE	BW	WW	YW	SC	MILK	M&G	CEM	FAT	REA	MARB	BMI\$	BIIS	CHBS
2.2	5.2	54	81	1.1	32	59	-1.2	0.002	0.44	-0.01	\$282	\$341	\$98

Bred AI on 5-7-24 to HUTH CLC WF Deluxe K016, then pasture exposed from 6-11-24 to 7-31-24 to JDH MRD 54E 8G Benton 35K ET. Ultrasound shows safe in calf to then pasture exposure.

27

E F78 MS *Braxton* K80

{DLF,HYF,IEF,MSUDF,MDF,DBF} | POLLED | BD: 9/8/22 | P44423075 | BW: 90 LB.

E 719 BRAXTON A012 E U806 VICTOR X84
E A012 BRAXTON F78 **E X84 VICTORIA B059**
 E 337U DIVA B061 E LADY RANGER R545



CE	BW	WW	YW	SC	MILK	M&G	CEM	FAT	REA	MARB	BMI\$	BIIS	CHBS
-8.2	6.5	62	104	1.5	21	52	-2.5	-0.058	0.58	0.21	\$295	\$374	\$138

Bred AI on 5/6/24 to SHF Harvest D87 H033 ET, then pasture exposed from 6-11-24 to 7-31-24 to JDH MRD 54E 8G Benton 35K ET. Ultrasound shows safe in calf (bull) to AI exposure.



BRED HEIFERS



28

E 252F *Whitney* K50

{DLF,HYF,IEF,MSUDF,MDF,DBF} | POLLED | BD: 8/24/22 | P44423053 | BW: 75 LB.

NJW 160Z 10W WHIT 33B H H PERFECT TIMING 0150 ET
 NJW 79Z 33B FORWARD 252F E 150 PERFECT LADY B003
 BW 91H 100W RITA 79Z ET E MC 7W LADY TAILOR Z737



CE	BW	WW	YW	SC	MILK	M&G	CEM	FAT	REA	MARB	BMI\$	BIIS	CHBS
2.6	3.3	55	84	0.4	18	46	0.8	-0.068	0.35	0.01	\$374	\$440	\$106

Bred AI on 5-6-24 to JDH MRD 54E 8G Benton 35K ET, then pasture exposed from 6-11-24 to 7-31-24 to JDH MRD 54E 8G Benton 35K ET. Safe in calf to pasture exposure.

29

LJE 252F *Whitney* 6K

{DLF,HYF,IEF,MSUDF,MDF,DBF} | POLLED | BD: 8/11/22 | P44427617 | BW: 82 LB.

NJW 160Z 10W WHIT 33B ILR HOMETOWN 332A ET
 NJW 79Z 33B FORWARD 252F LJE 332A EDNA 12F
 BW 91H 100W RITA 79Z ET LJE Z833 MARVEL 007C



CE	BW	WW	YW	SC	MILK	M&G	CEM	FAT	REA	MARB	BMI\$	BIIS	CHBS
3.9	3.2	52	88	0.1	22	48	4.4	-0.028	0.53	0.01	\$349	\$410	\$102

Bred AI on 5-6-24 to SHF Harvest D287 H033 ET, then pasture exposed from 6-11-24 to 7-31-24 to JDH MRD 54E 8G Benton 35K ET. Ultrasound shows safe in calf (bull) to AI exposure.



BRED HEIFERS



Lot 30

30

E 0001 MS McCabe K12

{DLF,HYF,IEF,MSUDF,MDF,DBF} | POLLED | BD: 8/7/22 | P44423030 | BW: 78 LB.

TH FRONTIER 174E
E 174E YELLOWSTONE 0001 ET
E 332A EDNA D160

E MC 7W SOLID ET Z833
E Z833 MARVEL D51
E 337U DIVA A072



CE	BW	WW	YW	SC	MILK	M&G	CEM	FAT	REA	MARB	BMI\$	BIIS	CHBS
4.9	0.3	44	68	0.4	27	49	3.4	0.072	0.33	-0.02	\$377	\$433	\$94

Bred AI on 4-19-24 to JDH MRD 54E 8G Benton 35K ET, then pasture exposed from 6-11-24 to 7-31-24 to JDH MRD 54E 8G Benton 35K ET. Ultrasound shows safe in calf (bull) to AI exposure.

31

E 0001 MS McCabe K25

{DLF,HYF,IEF,MSUDF,MDF,DBF} | POLLED | BD: 8/16/22 | P44423068 | BW: 88 LB.

TH FRONTIER 174E
E 174E YELLOWSTONE 0001 ET
E 332A EDNA D160

TH 512X 719T PLAYMAKER 14Z
HARVIE SAFNBF MS FIREFLY 62D
HARVIE MS FIREFLY ET 33Y



CE	BW	WW	YW	SC	MILK	M&G	CEM	FAT	REA	MARB	BMI\$	BIIS	CHBS
-4.4	3.7	60	92	1.2	29	59	-4.0	0.092	0.54	-0.14	\$362	\$424	\$85

Bred AI on 4-19-24 to SHF Harvest D287 H033 ET, then pasture exposed from 6-11-24 to 7-31-24 to JDH MRD 54E 8G Benton 35K ET. Ultrasound shows safe in calf (heifer) to AI exposure.



Lot 31

BRED HEIFERS



32

E 126H *Millie* K40

{DLF,HYF,IEF,MSUDF,MDF,DBF} | POLLED | BD: 8/19/22 | P44427612 | BW: 89 LB.

NJW 78P 88X COWBOSS 199B ET ILR HOMETOWN 332A ET
NJW 79Z 199B BOURBON 126H ET **E 332A EDNA E85**
 BW 91H 100W RITA 79Z ET WCC 293W 413X BRANDY 10B



CE	BW	WW	YW	SC	MILK	M&G	CEM	FAT	REA	MARB	BMI\$	BIIS	CHBS
-2.5	3.5	58	101	1.6	32	61	-4.0	0.042	0.85	0.03	\$399	\$468	\$126

Bred AI on 4-19-24 to SHF Harvest D287 H033 ET, then pasture exposed from 6-11-24 to 7-31-24 to JDH MRD 54E 8G Benton 35K ET. Ultrasound shows safe in calf (heifer) to AI exposure.

33

E 126H *Millie* K44

{DLF,HYF,IEF,MSUDF,MDF,DBF} | POLLED | BD: 8/21/22 | P44427614 | BW: 80 LB.

NJW 78P 88X COWBOSS 199B ET HARVIE SAFNBFI COLATERAL 337U
NJW 79Z 199B BOURBON 126H ET **E 337U DIVA A067**
 BW 91H 100W RITA 79Z ET E LADY RANGER R558



CE	BW	WW	YW	SC	MILK	M&G	CEM	FAT	REA	MARB	BMI\$	BIIS	CHBS
4.3	1.8	59	93	1.0	24	54	-2.1	0.012	0.53	0.13	\$478	\$560	\$116

Bred AI on 5-6-24 to JDH MRD 54E 8G Benton 35K ET, then pasture exposed from 6-11-24 to 7-31-24 to JDH MRD 54E 8G Benton 35K ET. Ultrasound shows safe in calf to AI exposure.



BULL CALVES



Lot 34



Lot 34 — E 65J BROKER M18



Maternal Sib of Lot 34 – sold in 2024 Bull Sale

34

E 65J *Broker* M18

[DLF,HYF,IEF,MSUDF,MDF,DBF] | HORNED | BD: 2/12/24 | 44567804 | BW: 88 LB.

INNISFAIL WHR X651/723 4013 ET
MOHICAN DOW JONES 65J
 MOHICAN MATTIE 403E ET

LOEWEN GENESIS G16 ET
C 8037 GENESIS GAL 1049 ET
 C CJC BELLE AIR LASS 8037 ET

M18 boasts an exceptional background in his pedigree; Mohican Dow Jones 65J out of a C GKB Guardian 1015's full sister. M18 is phenotypically very correct, is short marked with great pigment and his EPD profile is outstanding. Just an outstanding prospect here. M18 is horned.



CE	BW	WW	YW	SC	MILK	M&G	CEM	FAT	REA	MARB	BMI\$	BIIS	CHBS
0.1	3.6	74	122	1.6	33	70	0.8	0.062	0.77	0.40	\$377	\$484	\$186

BULL CALVES



Although this sale primarily features the female side of our operation, we feel that these two bull calves have such intriguing pedigrees and are of such quality, we felt they should be in this year's offering.



35

E 2135 *High Country* M20

{DLF,HYF,IEF,MSUDF,MDF,DBF} | HORNED | BD: 2/20/24 | 44568604 | BW: 94 LB.

LOEWEN GENESIS G16 ET
C ARLO 2135 ET
 C 88X NOTICE ME 1311 ET

PYRAMID 16W 110T 9116
ILR 16W LADY BETH 835 ET
 DJB 46B BETH 1L

One of the first C Arlo 2135 offspring to sell, and he is very uniquely bred. M20's dam being a direct daughter of the Beth 1L cow and Pyramid 16W just adds more "wow" to Arlo's exceptional background. The 835 cow has proven herself as well; her offspring have been at the top of their contemporary groups. Another great prospect offered here. M20 is horned.



CE	BW	WW	YW	SC	MILK	M&G	CEM	FAT	REA	MARB	BMI\$	BII\$	CHB\$
1.6	3.5	56	85	1.0	33	61	-0.3	0.062	0.66	0.24	\$517	\$604	\$147

EMBRYOS



C 8037 GENESIS GAL 1049 — Dam of Lot 36



CSC 701 OSHOTO 316 — Sire of Lot 36

36

Four (4) IVF *Embryos*

CSC 508 50B BRAWN 704
CSC 701 OSHOTO 316
 CSC 502 LADY DEW 701

LOEWEN GENESIS G16 ET
C 8037 GENESIS GAL 1049 ET
 C CJC BELLE AIR LASS 8037 ET

	CE	BW	WW	YW	SC	MILK	M&G	CEM	FAT	REA	MARB	BMI\$	BIIS	CHBS
Sire	3.4	2.5	54	98	1.6	37	64	4.6	-0.018	0.44	-0.02	351	412	115
Dam	4.0	3.9	70	116	1.6	33	68	2.7	0.042	0.68	0.49	427	538	182

This mating is about as fresh as it gets. Sired by the highly acclaimed and high selling bull in this year's NWSS sale in Denver and out of C 8037 Genesis Gal 1049 ET, who is a full sister to C GKB Guardian 1015 ET. This mating definitely combines appeal with power and carcass merit. Offering four (4) embryos.

EMBRYOS



E 20C URSULA G46 — Dam of Lot 37

37

Four (4) IVF *Embryos*

LOEWEN GENESIS G16 ET
C ARLO 2135 ET
 C 88X NOTICE ME 1311 ET

RSK E 2046 DIGBY ET 20C
E 20C URSULA G46
 E A012 LADY BRAXTON D104

This mating by the popular Arlo bull and out of G46, brings a highly maternal background from both sire and dam, as Digby 20C daughters are making great cows and the maternal influence behind Arlo needs no further explanation.

	CE	BW	WW	YW	SC	MILK	M&G	CEM	FAT	REA	MARB	BMI\$	BIIS	CHBS
Sire	0.4	5.5	70	110	1.8	35	70	3.0	0.052	0.79	0.21	461	556	164
Dam	3.6	4.5	56	92	1.2	25	53	-1.6	-0.028	0.27	0.02	327	393	94



Daughter of G46



C ARLO 2135 ET — Sire of Lot 37

REFERENCE SIRES



E Z712 SCHATZEE D83

A

E Z712 *Schatzee* D83

{DLF,HYF,IEF,MSUDF,MDF} | POLLED | BD: 3/14/16 | 43693243

HARVIE LADIES MAN 4L
E 4L SCHATZEE ET Z712
 HARVIE MS FIREFLY ET 186W

EPHR REAGAL 42R
EPHR LINNETTE 530T
 EPHR MILLEY 96R



CE	BW	WW	YW	SC	MILK	M&G	CEM	FAT	REA	MARB	BMI\$	BIIS	CHBS
-3.0	4.7	70	114	0.5	13	48	-0.5	0.042	0.73	-0.08	\$342	\$415	\$106

Heavily pigmented Schatzee son whose line bred dam adds to the predictability. D83 passes on his pigment, color, performance and will add ribeye as well.



NJW 202C 81E STEWARD 98G ET

B

NJW 202C 81E *Steward* 98G ET

{DLF,HYF,IEF,MSUDF,MDF} | POLLED | BD: 2/11/19 | 44056521

CHURCHILL SENSATION 028X
NJW 160B 028X HISTORIC 81E ET
 NJW 73S 38W DAYDREAM 160B

NJW 73S W18 HOMEGROWN 8Y ET
NJW 160Z 8Y HOME MAKER 202C
 NJW 73S 88X DAYDREAM 160Z



CE	BW	WW	YW	SC	MILK	M&G	CEM	FAT	REA	MARB	BMI\$	BIIS	CHBS
0.6	2.8	58	80	0.8	41	69	-0.5	0.002	0.67	0.13	\$442	\$519	\$119

98G brings an incredible maternal background. This bull adds depth and dimension to his progeny, he is homozygous polled and the number profile backing up this guy is also exceptional. A 98G daughter was Reserve Grand Champion Polled Hereford Female at Agribition last year. Owned with Tudahl Herefords and NJW Herefords.



MOHICAN DOW JONES 65J

C

MOHICAN *Dow Jones* 65J

{DLF,HYF,IEF,MSUDF,MDF,DBF} | POLLED | BD: 2/20/21 | 44239102

EFBEEF TFL U208 TESTED X651 ET
INNISFAIL WHR X651/723 4013 ET
 INNISFAIL P230 T723

NJW 76S 27A SALUTE 201C
MOHICAN MATTIE 403E ET
 GV CMR Y490 MATTIE 86P A287



CE	BW	WW	YW	SC	MILK	M&G	CEM	FAT	REA	MARB	BMI\$	BIIS	CHBS
0.6	1.7	73	118	1.4	32	69	5.2	0.042	0.85	0.34	\$395	\$497	\$176

Dow Jones has extreme growth and carcass numbers while also having a strong maternal background. 65J is made right: structurally sound with a good foot, short marked with pigment. Owned with Mohican West and Clifford Farms.

REFERENCE SIRES



JDH MRD 54E 8G BENTON 35K ET

D

JDH MRD 54E 8G *Benton* 35K ET

{DLF,HYF,IEF,MSUDF,MDF,DBF} | POLLED | BD: 1/31/22 | 44341381

JDH 11B STUD 3134 63E
JDH AH BENTON 8G ET
 JDH AH MS 34X VICTOR 33Z45C ET

BR TRUST 0217 3373
JDH MS 40B TRUST 3373 54E
 JDH RBC MS 123 REDEEM 40B ET



CE	BW	WW	YW	SC	MILK	M&G	CEM	FAT	REA	MARB	BMI\$	BIIS	CHBS
3.5	1.8	66	108	0.5	30	63	2.5	0.092	0.90	0.38	\$453	\$554	\$167

Our selection from the 2023 Atkins/Delaney bull offering, he has sure grabbed the attention of all visitors. This Benton son is deep set with good length, is very well muscled, and is also dark red with pigment. His calves have come easily here, with above average growth and eye appeal. 35K also posts stellar carcass EPDs. He has been greatly appreciated by all who have seen him. We are very excited about the future of 35K's offspring.

Exportable semen available.

Owned with Atkins Delaney Herefords.

E

SHF *Harvest* D287 H033 ET

{CHB}{DLF,HYF,IEF,MSUDF,MDF,DBF} | POLLED | BD: 2/1/20 | 44123604

SHF YORK 19H Y02
SHF DAYBREAK Y02 D287 ET
 SHF MISS M326 T08 ET

GERBER ANODYNE 001A
SHF TIME 001A D81
 SHF TIME 42X A140



CE	BW	WW	YW	SC	MILK	M&G	CEM	FAT	REA	MARB	BMI\$	BIIS	CHBS
6.9	0.1	66	117	1.2	36	69	7.0	0.062	0.76	0.34	\$384	\$480	\$179

Used Bred AI on some of the sale heifers.

F

HUTH CLC WF *Deluxe* K016

{DLF,HYF,IEF,MSUDF,MDF,DBF} | POLLED | BD: 4/24/22 | 44370488

NJW 160B 028X HISTORIC 81E ET
H B DISTINCT
 H DS MISS SPICE 8082

/S MANDATE 66589 ET
HUTH F035 MANDY H029
 HUTH Z024 MS EXEDE F035



CE	BW	WW	YW	SC	MILK	M&G	CEM	FAT	REA	MARB	BMI\$	BIIS	CHBS
9.5	1.1	85	138	1.8	44	86	-1.1	0.062	1.25	0.19	\$529	\$637	\$185

Used Bred AI on some of the sale heifers.

Bulls for Sale

by Private Treaty

18-MONTH-OLD AND YEARLINGS

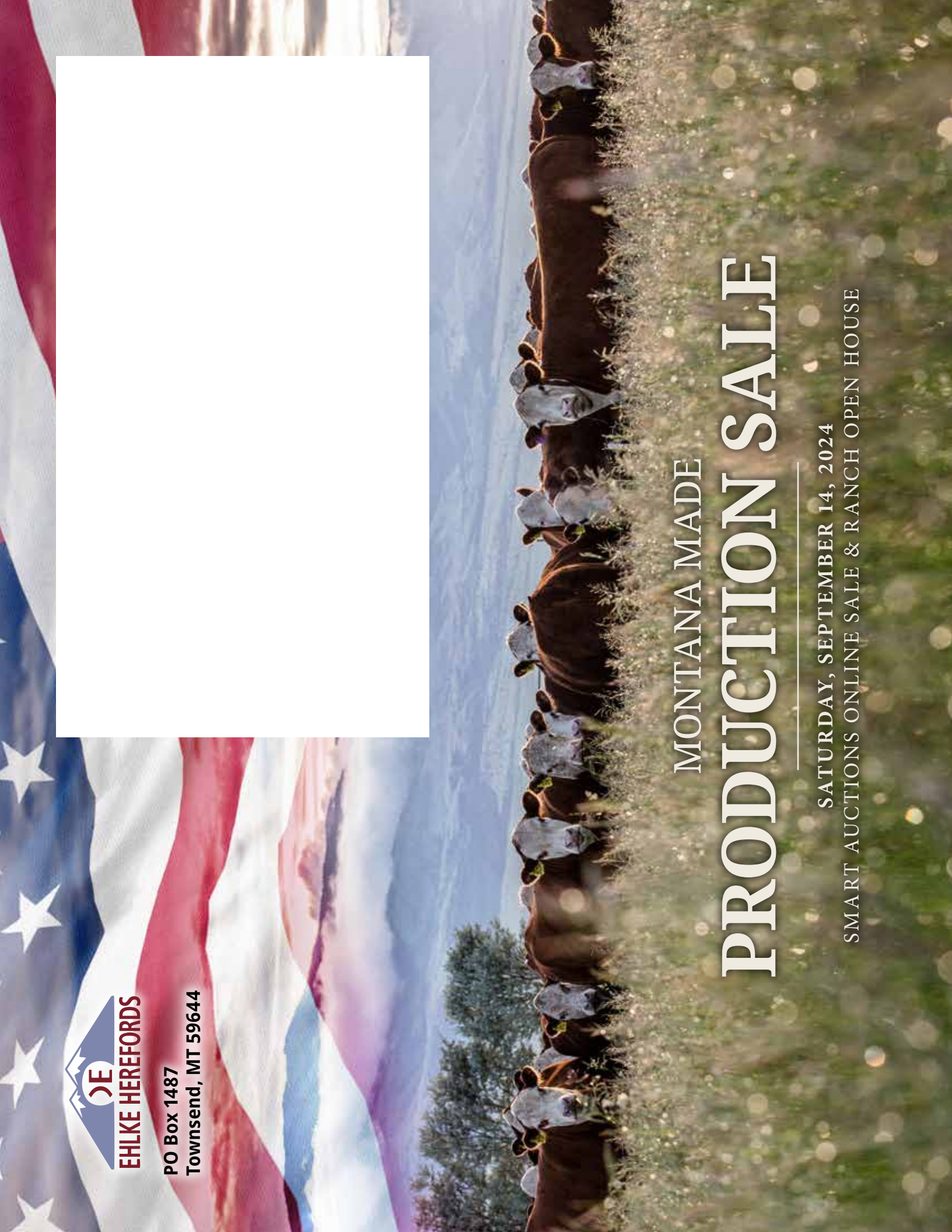
*Contact us to get on our bull catalog mailing list
Make your bull picks early ... we can hold them until spring*





EHLKE HEREFORDS

**PO Box 1487
Townsend, MT 59644**



MONTANA MADE

PRODUCTION SALE

SATURDAY, SEPTEMBER 14, 2024
SMART AUCTIONS ONLINE SALE & RANCH OPEN HOUSE