

14th Annual

BULL SALE

GENOA
LIVESTOCK, LLC

2:30 PM | MONDAY, SEPTEMBER 9, 2024
at the Ranch in Minden, Nevada



Selling **50**  **HEREFORD BULLS**
Both Horned and Polled

GENOA LIVESTOCK

A Balanced Approach to Performance Hereford Genetics



GENOA LIVESTOCK BULL SALE

at the Ranch in Minden, Nevada

SALE LOCATION

The sale will be held at **Genoa Livestock's home ranch, 640 Genoa Lane, Minden, NV**; in Carson Valley, about 1 hour south of Reno and 30 minutes from South Lake Tahoe.

SALE DAY SCHEDULE

Monday, September 9, 2024

NOON: Review sale cattle in the pens; Light Lunch Buffet

2:30 PM: Sale — Rick Machado, Auctioneer

Video Sale streamed live on Live Auctions.TV

5:00: CATERED dinner and entertainment

Note: All cattle will be available for inspection prior to sale day and the auction will be streamed on LiveAuctions.TV

ACCOMMODATIONS

There are several nearby motels in Minden, Gardnerville or Carson City, Nevada.

Here are a few to try:

- Carson Valley Inn, Minden 775-782-9711
- Holiday Inn Express, Minden 775-782-7500
- Courtyard by Marriot, Carson City 775-887-9900
- Gold Dust West, Carson City 775-885-9000
- David Walley's Resort, Genoa 775-782-8155

TRANSPORTATION

With sufficient notice, planes will be met at Reno-Tahoe International Airport or Minden-Tahoe Airport.

FREE DELIVERY and 60 DAYS FREE BOARD

Sale cattle will be delivered free of charge within 500 miles of the ranch. Seller will equally split delivery expenses beyond 500 miles with Buyer. Sale Bulls may be boarded at the ranch for 60 days at no charge.

BULL HEALTH and TESTING

All bulls will have passed a satisfactory semen test and rigid fertility evaluation prior to the sale. They have been Anaplas vaccinated, BVD tested and have a negative Trich test result.

Genoa Livestock also maintains a rigorous vaccination protocol. See inside back cover.

SALE TERMS

Retained Semen Interest: Genoa Livestock is selling full possession and retaining 50% semen interest on all bulls.

Lot numbers will correspond to this sale catalog. The sale is being conducted under the suggested sales terms and conditions adopted by the American Hereford Association. Except for those stated in the terms and conditions there are no warranties either expressed or implied, as to the merchantability or fitness for a particular purpose with respect to the cattle being sold in this auction. The warranties and guaranties set forth in the "Terms and Conditions" are in lieu of all other warranties either expressed or implied, and the remedies provided therein shall be the sole and exclusive remedy of the buyer (or any claiming through the buyer) for any breach of warranty or guarantee therein provided and all other obligations available at the clerk's desk on sale day.

All persons who attend this sale do so at their own risk.

Genoa Livestock assumes no responsibility, legal or otherwise, for accidents which may occur.

LOCATION



640 Genoa Lane, Minden, NV is located just off Highway 395 which can be reached via 580 South from Reno; Highway 50 or Highway 881 from California



All Genoa sale bulls are DNA parentage and GE-EPD tested

Please join us for the

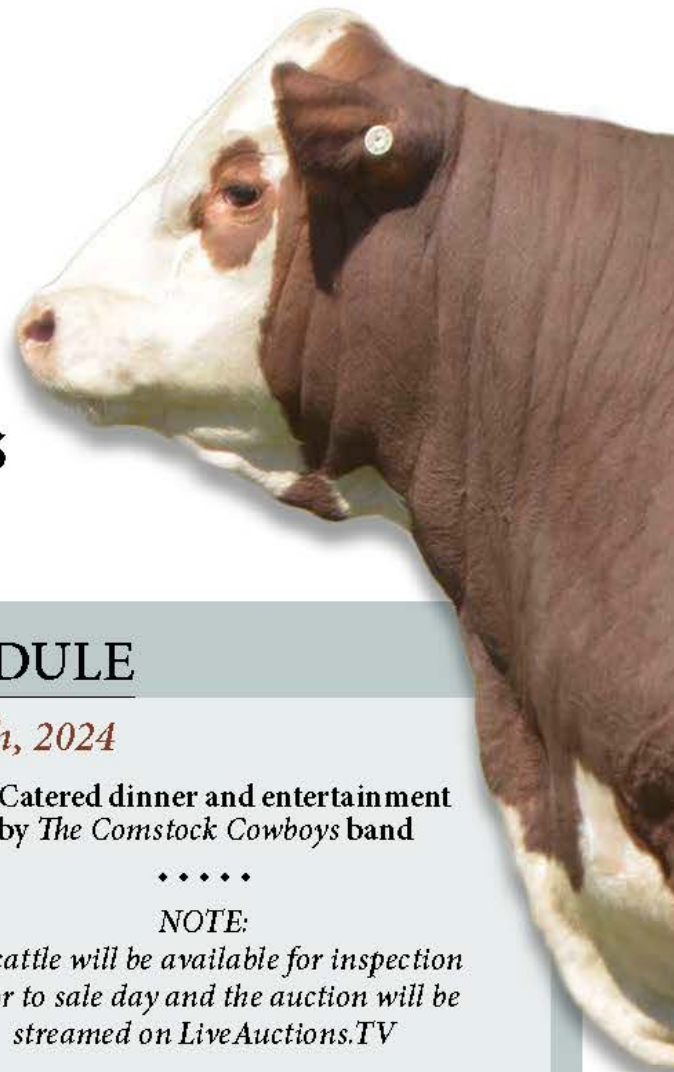


GENOA LIVESTOCK BULL SALE

Monday, September 9, 2024

at the Ranch - 640 Genoa Lane - Minden, Nevada

Selling 50 GENOA HEREFORD BULLS Both Horned and Polled



SALE DAY SCHEDULE

Monday, September 9th, 2024

NOON: Sale cattle will be available for inspection on-site (or prior to by arrangement) Light Buffet Lunch

2:30 PM: Live Auction Video Sale. Rick Machado, Auctioneer



5:00 PM: Catered dinner and entertainment by The Comstock Cowboys band

NOTE:

All cattle will be available for inspection prior to sale day and the auction will be streamed on LiveAuctions.TV

SALE REPRESENTATIVES

- Rick Machado - Auctioneer 805-501-3210
Matt MacFarlane - California Cattleman 916-803-3113
Jared Patterson - Western Livestock Journal 208-312-2386
Emilee Holt - American Hereford Association 208-965-3130
Rod Wesselman, Special Assignment 509-750-2185

GENOA LIVESTOCK REPRESENTATIVES

- Bob Coker 916-539-1987
Chris Beck 618-367-5397
Brian Peck, Veterinarian 775-901-8721
Photography by Jared Patterson - Caldwell, ID 208-312-2386
Videos by Tacee Shaw - Gooding, ID 208-358-6323



Bob Coker 916-539-1987 | Chris Beck 618-367-5397

640 Genoa Lane
Minden, Nevada

775-782-3336

www.genoalivestock.com

View Sale Bull Videos at www.genoalivestock.com

If you can't join us in person, join in on



Find us on Facebook

Welcome!



Fellow Cattlemen and Cattlewomen:

Preparing our sale catalog each year is a mental recap of our crew's effort over the preceding two years to successfully bring these sale lots to you. As you all know, this isn't easy work — but we live it and love it! And we thank you in advance for your interest in our program.

We stringently research and select only proven AI sires to ensure reliability of the genetics we offer each year. This past spring we expanded our ET program to 80 recipis allowing us to be even more selective. Additionally, all registered cows are initially bred with industry leading AI sires, then turned out with our top herd sires. So we are pleased to bring you this year's offering and believe the genetics represented here will solidly support your bottom line production objectives. We have selected 50 outstanding bulls — both horned and polled — for your consideration.

Our breeding objectives are straight forward: to produce quality Hereford genetics focused on a balanced approach of enhanced EPD profiles, breed-leading pedigrees, structural integrity, performance, phenotype, end product value — all which make for good complete cattle. Simply put, it's our mission to provide you with the best Hereford genetics available in the western region.

For the 14th consecutive year, Genoa Livestock's Bulls and Heifers — our 2023 spring calf crop of 201 calves — ranked in the Top 25% of the Hereford breed in 11 of 12 traits measured by the American Hereford Association, and in the Top 15% in all 3 indexes. See our Sale Bulls Percentile EPD Ranking graph on the inside back cover.

We begin development of our bulls a few months after weaning in large dry lots that allow for plenty of travel and exercise. They are developed sensibly, to ensure that at turn-out time these bulls will hold up, work, and get the job done. This has served as a valuable developmental program for our customers. All Genoa Livestock bulls are 100% guaranteed as sound and healthy breeders.

We sincerely thank you for your support and continuing confidence in Genoa Livestock's breeding program. Please feel free to call with any questions, or swing by the ranch if you are in the area.

Visitors are always welcome.

We look forward to seeing you here at Genoa Livestock, September 9th!

*Bob & Carol, Chris & Lydia, Travis & Becky, Michelle & Scott,
Gilberto & Suzanne, Delfino & Yessenia and their families*



TH 403A 475Z PIONEER 358C ET (358C) P43596960
 TH FRONTIER 174E (174E) P43818822
 FTF TRUSTING LADY 312A (312) P43383673

NJW 73S M326 TRUST 100W ET (73S100W) P43002897
 ABC MS 100W BLAZE 4015 (4015) 43538605
 ABC MS 4084 BLAZE 8047 (8047) 42944092

TH 89T 755T STOCKMAN 475Z (475Z) P43287478
 TH 71U 17Y RITA 403A (403A) P43371431
 NJW 73S M326 TRUST 100W ET (73S100W) P43002897
 FTF BOOM AND BLOOM 821U (821U) P42882347

KCF BENNETT 3008 M326 (M326) P42361822
 NJW P606 72N DAYDREAM 73S (72N73S) P42693956
 C&S 0075 BLAZE 4084 (4084) 42632384
 ABC MS 7057 DESTINY 9002 (9002) 42006524

[Lot A] H FLASH 0708 ET

Reg.: 44233202 | Calved: 09/01/2020 | Tattoo: 0708 | Polled

CE	BW	WW	YW	DMI	SC	SCF	MM	M&G	MCE
7.5	0.6	69	114	0.4	1.9	21.2	39	73	7.0

MCW	UDDR	TEAT	CW	FAT	REA	MARB	\$BMI	\$BII	\$CHB
116	1.30	1.30	82	0.032	0.98	0.07	452	535	135



EFBEEF TFL U208 TESTED X651 ET (PEFX651) P43091736
 INNISFAIL WHR X651/723 4013 ET (F4013) P43541960
 INNISFAIL P230 T723 (IFT723) P42843247

C MILES MCKEE 2103 ET (2103) 43270668
 C CJC 89T MISS MILES 4264 ET (4264) P43487278
 TH 16G 20N GEMINI 89T (TH89T) P42779363

EFBEEF FOREMOST U208 (PEFU208) P42896690
 EFBEEF P606 MABEL R415 (PEFR415) P42635108
 EF F745 FRANK P230 (PEFP230) P42528669
 INNISFAIL 235 R501 ET (IFR501) P42666992

NJW 98S R117 RIBEVE 88X ET (98S88X) 43094146
 C NOTICE ME ET (2009) 42280891
 NPH 20X SPARTAN 20N (20N) P42389552
 TEE-JAY 707B GEMINI 16G ET (TJHH16G) P42210391

[Lot B] C REAL DEAL 0137 ET

Reg.: 44122963 | Calved: 01/11/2020 | Tattoo: 137 | Polled

CE	BW	WW	YW	DMI	SC	SCF	MM	M&G	MCE
6.4	3.4	74	106	0.5	1.1	17.5	27	65	2.2

MCW	UDDR	TEAT	CW	FAT	REA	MARB	\$BMI	\$BII	\$CHB
92	1.50	1.40	80	0.062	0.49	0.44	392	506	150



[Lot C] LOEWEN GENESIS G16 ET

Reg.: 43387463 | Calved: 01/17/2019 | Tattoo: G16 | Polled

CE	BW	WW	YW	DMI	SC	SCF	MM	M&G	MCE
4.7	3.6	75	129	0.7	1.9	26.4	36	73	5.8

MCW	UDDR	TEAT	CW	FAT	REA	MARB	\$BMI	\$BII	\$CHB
116	1.30	1.20	110	0.112	0.82	0.48	563	685	198



KCF BENNETT ENCORE Z311 ET (Z311) P43387256
 NJW 79Z Z311 ENDURE 173D ET (79Z173D) P43722088
 BW 91H 100W RITA 79Z ET (91H79Z) P43311375

MSU TCF REVOLUTION 4R (4R) P42593689
 LOEWEN 77 48 MISS 344N 4RB42ET (B42) P43461646
 PCR JACKLYN NIKOLE 344N (PCR344N) P42408229

SCHU-LAR ON TARGET 22S (22S) P42669011
 KCF MISS REVOLUTION X338 ET (X338) P43155704
 NJW 73S M326 TRUST 100W ET (73S100W) P43002897
 REMITALL RITA 91H (NGA 91H) P42299721

FELTONS LEGEND 242 (242) P42016383
 MSU TCF RACHAEL ET 54N (54N) P42392509
 PCR JACK PHROST 18K (PCR18K) P42106168
 PCR VICKI NICOLE 642F (PCR642F) P24007310

[Lot D] CHURCHILL KINGDOM 128J ET

Reg.: 44267937 | Calved: 01/12/2021 | Tattoo: 128 | Polled

CE	BW	WW	YW	DMI	SC	SCF	MM	M&G	MCE
10.6	0.6	65	97	0.5	1.7	23.6	35	67	12.7

MCW	UDDR	TEAT	CW	FAT	REA	MARB	\$BMI	\$BII	\$CHB
88	1.50	1.50	96	0.062	0.93	0.45	508	615	176



LCX PERFECTO 11B ET (LCX 11B) P43517583
 DM ALL AROUND 904G ET (904) P44015527
 DM LI DOMINETTE 301 ET (301) P43778209

NJW 98S R117 RIBEYE 88X ET (98S88X) 43094146
 WLL ZOEY 3Z (WLL3Z) P43333321
 CL 1 DOMINO 955W (955) 42982422
 DM LI DOMINETTE 901 (901) P42000331

EFBEEF BR VALIDATED B413 (PEFB413) P43558667
 BR VALIDATED B413 6035 7098 (7098) P43857421
 BR BENNETT 4R Y428 2101 6035 (6035) P43631993

EFBEEF TFL U208 TESTED X651 ET (PEFX651) P43091736
 EFBEEF 4R THYRA Y865 (PEFY865) P43187517
 KCF BENNETT REVOLUTION Y428 (Y428) P43251111
 BR BENNETT OF 4070 2101 (2101) P43325022

[Lot E] GENOA 6011 BELLE AIR 19091

Reg.: 44011891 | Calved: 02/26/2019 | Tattoo: 9091 | scurred

CE	BW	WW	YW	DMI	SC	SCF	MM	M&G	MCE
-3.0	3.6	70	114	0.6	2.9	24.5	33	68	-4.7

MCW	UDDR	TEAT	CW	FAT	REA	MARB	\$BMI	\$BII	\$CHB
115	1.40	1.30	78	0.062	0.40	0.59	503	627	165



BAR S LHF 028 240 (240) 43287538
 BR BELLE AIR 6011 (6011) 43724674
 BR BELLE 4082 ET (4082) 43514206

CHURCHILL SENSATION 028X (028) 43092364
 CHURCHILL LADY 078X (078) 43092363
 GOLDEN OAK OUTCROSS 18U (GORX18U) P42963135
 BR CSF BRIELLE 8052 ET (CSF8052) P42970587

NJW 73S W18 HOMETOWN 10Y ET (73S10Y) P43214853
 GENOA MISS HOMETOWN 10Y 15047 (15047) P43585109
 HYALITE TS LASS 547 (547) P42564481

SHE WONDER M326 W18 ET (W18) P42991698
 NJW P606 72N DAYDREAM 73S (72N73S) P42693956
 KT TOP SECRET 1030 (1030) P42205594
 HYALITE 233 LASS 205 (205) P42268115

[Lot F] CL 1 DOMINO 942G

Reg.: 44010158 | Calved: 01/11/2019 | Tattoo: 942 | Horned

CE	BW	WW	YW	DMI	SC	SCF	MM	M&G	MCE
3.6	2.3	64	101	0.2	1.8	19.0	16	48	3.7

MCW	UDDR	TEAT	CW	FAT	REA	MARB	\$BMI	\$BII	\$CHB
162	1.30	1.40	90	0.042	0.33	0.34	431	530	164



HH ADVANCE 5044C ET (5044) 43578992
 CL 1 DOMINO 7131E 1ET (7131) 43810450
 CL 1 DOMINETTE 3175A (3175) 43379690

CL 1 DOMINO 215Z (215) 43268007
 HH MISS ADVANCE 1072Y ET (1072) 43173106
 CL 1 DOMINO 1161Y (1161) 43189589
 CL 1 DOMINETTE 1123Y 1ET (1123) 43189581

CL 1 DOMINO 412B (412) 43469469
 CL 1 DOMINETTE 664D 1ET (664) 43691958
 CL 1 DOMINETTE 1146Y (1146) 43189521

CL 1 DOMINO 216Z 1ET (216) 43268008
 CL 1 DOMINETTE 1112Y 1ET (1112) 43189578
 CL 1 DOMINO 862U (862) 42897556
 CL 1 DOMINETTE 617S (617) 42673551



MSU MF HUDSON 19H (19H) P41027599
 SHF YORK 19H Y02 (Y02) P43180994
 LOEWEN MISS P20 10W (10W) P42968642

NJW 73S W18 HOMETOWN 10Y ET (73S10Y) P43214853
 GENOA MISS HOMETOWN 10Y 15063 (15063) P43585168
 GENOA MISS BENNETT N114 11083 (11083) P43174332

MSU WNH FELTON 5F (5F) P23910403
 MSU VICTORIA 9F (9F) P23906258
 SHF PROGRESS P20 (P20) P42481042
 LOEWEN M326 MISS 39T (39T) P42778587

SHF WONDER M326 W18 ET (W18) P42991698
 NJW P606 72N DAYDREAM 73S (72N73S) P42693956
 KCF BENNETT 774 N114 (N114) P42379692
 R MISS PUCKSTER 28 (28) P42913972

[Lot G] GENOA YORK Y02 17013

Reg.: 43781453 | Calved: 02/18/2017 | Tattoo: 7013 | Polled

CE	BW	WW	YW	DMI	SC	SCF	MM	M&G	MCE
2.7	2.9	62	107	0.5	1.5	11.9	17	48	-2.3
MCW	UDDR	TEAT	CW	FAT	REA	MARB	\$BMI	\$BII	\$CHB
101	1.30	1.20	101	0.072	0.66	0.14	316	394	155



KCF BENNETT REVOLUTION X51 (X51) P43081556
 EFBEEF RESOLUTE CEO (PEFC609) P43591829
 EFBEEF 6378 KATE W484 (PEFW484) P43032139

BEHM 100W CIDA 504C (BEHM504C) P43636764
 H MS EXCEL 7945 ET (7945) P43857538
 H MS 824 EXCEL 4146 ET (4146) P43482081

MSU TCF REVOLUTION 4R (4R) P42593689
 KCF MISS PROFICIENT U201 (U201) P42903703
 R&R PRIME CUT 6378 ET (6378) P42763764
 EFBEEF 6378 KATE R428 (PEFR428) P42635106

NJW 73S M326 TRUST 100W ET (73S100W) P43002897
 BEHM R294 JASMAN102Y (BEHM102Y) P43229647
 NJW 73S W18 HOMETOWN 10Y ET (73S10Y) P43214853
 H LADY EXCELL 824 ET (824) 42978234

[Lot H] H WMS THOMAS COUNTY 1443 ET

Reg.: 44257454 | Calved: 01/27/2021 | Tattoo: 1443 | Polled

CE	BW	WW	YW	DMI	SC	SCF	MM	M&G	MCE
3.3	3.1	78	126	1.3	1.9	22.2	36	75	-2.7
MCW	UDDR	TEAT	CW	FAT	REA	MARB	\$BMI	\$BII	\$CHB
86	1.30	1.30	101	0.072	0.87	0.42	471	588	166



[Lot 1] GENOA 19263 HOMETOWN 23011

Reg.: 44455614 | Calved: 02/21/2023 | Tattoo: 3011 | Polled

CE	BW	WW	YW	DMI	SC	SCF	MM	M&G	MCE
7.6	2.2	59	88	0.0	1.2	17.4	28	57	4.5
MCW	UDDR	TEAT	CW	FAT	REA	MARB	\$BMI	\$BII	\$CHB
88	1.40	1.40	83	0.082	0.59	0.10	384	460	130



NJW 135U 10Y HOMETOWN 27A (135U27A) P43385145
 GENOA 27A HOMETOWN 19263 ET (9263) P44096834
 R&R 6378 LEANNE 6003 8003 (8003) P42928365

JDH AH PROMINENT 21G ET (21G) P44014204
 GENOA MISS 21G PROMINENT 21079 (1079) P44228075
 TCW CALL GIRL 200Z 521C (521C) P43584077

NJW 73S W18 HOMETOWN 10Y ET (73S10Y) P43214853
 NJW 4037 34S DIRANGO VACA 135U (34S135U) P42892084
 R&R PRIME CUT 6378 ET (6378) P42763764
 R&R SILVEIRAS LILY LEANNE 6003ET (6003) P42763766

JDH 11B STUD 3134 63E (63E) P43782967
 JDH AH MS 34X VICTOR 33Z45C ET (45C) P43615978
 CHURCHILL RED BULL 200Z (200) P43281860
 TCW CALL GIRL 204N 807U (807U) P42892255

- A big bodied, moderate framed, easy fleshing 9263 son out of a super feminine and beautiful uddered Prominent 2 year old.
- 23011 has a lot of convenience traits stacked into his pedigree to make those low maintenance black baldie replacements with long lasting udders.
- EPDs: Top 10% UDDER, TEAT; Top 15% MCE, CW; Top 20% CED; Top 25% DMI, REA, CHBS

[Lot 2] GENOA 183F MASTERPLAN 23017

Reg.: 44455472 | Calved: 02/22/2023 | Tattoo: 3017 | Polled

CE	BW	WW	YW	DMI	SC	SCF	MM	M&G	MCE
1.8	3.0	72	121	0.7	1.4	24.5	23	59	3.2
MCW	UDDR	TEAT	CW	FAT	REA	MARB	\$BMI	\$BII	\$CHB
115	1.50	1.60	72	0.112	0.40	0.53	486	609	146



- Delayed Blindness Carrier.
- A very impressive Masterplan son out of an own 2 year old daughter of 5047.
- A heifer's first calf with an acceptable birth weight, plenty of muscle shape and substance. Great growth and carcass ratios amongst his contemporaries and an EPD profile that checks a lot of boxes across the board.
- RATIOS: WW 110%, YW 110% IMF 130%
- EPDS: Top 1% TEAT; Top 5% WW, YW, SCF, UDDR, MARB, BMI; Top 10% CHB; Top 15% SC; Top 20% MCE; Top 25% M&G



KCF BENNETT STRATEGY Z303 ET (Z303) P43387250
 TH MASTERPLAN 183F (183F) P43920493
 TH 512X 145Y DOMINETTE 57B (57B) P43463161

SCHU-LAR ON TARGET 22S (22S) P42669011
 KCF MISS REVOLUTION X338 ET (X338) P43155704
 FTF PROSPECTOR 145Y (145) P43182570
 TH 122 71I DOMINETTE 512X ET (512X) P43122877

SNOWSHOE X51 BANNACK Y27 19C (SNO19C) P43573757
 GENOA MISS 19C BANNACK 21054ET (1054) P44228079
 GENOA MISS HOMETOWN 10Y 15047 (15047) P43585109

KCF BENNETT REVOLUTION X51 (X51) P43081556
 SNOWSHOE 719T KATIE Y27 (SNOY27) P43224358
 NJW 73S W18 HOMETOWN 10Y ET (73S10Y) P43214853
 HYALITE TS LASS 547 (547) P42564481

[Lot 3] GENOA 0708 FLASH 23020

Reg.: 44455499 | Calved: 02/23/2023 | Tattoo: 3020 | Polled

CE	BW	WW	YW	DMI	SC	SCF	MM	M&G	MCE
10.2	-0.6	61	104	0.7	1.0	25.1	33	64	8.2
MCW	UDDR	TEAT	CW	FAT	REA	MARB	\$BMI	\$BII	\$CHB
84	1.40	1.30	63	0.052	0.65	0.28	479	573	120



- A twin that performed exceptionally well from birth to weaning.
- 3020 is a Flash son with added frame and length of stride and is very athletic on the move. He is smooth through his shoulders to validate his high calving ease maternal and calving ease direct EPD.
- Strong ratios across the board and an impressive 128% ratio for Marb.
- RATIOS: BW 95%, WW 116%, YW 101%, REA 102%, IMF 128%
- EPDS: Top 5% BW, SCF, MCE, BMI; Top 10% CED, MM, M&G; Top 15% YW, MARB; Top 20% REA; Top 25% WW, UDDR



TH FRONTIER 174E (174E) P43818822
 H FLASH 0708 ET (0708) P44233202
 ABC MS 100W BLAZE 4015 (4015) 43538605

TH 403A 475Z PIONEER 358C ET (358C) P43596960
 FTF TRUSTING LADY 312A (312) P43383673
 NJW 73S M326 TRUST 100W ET (73S100W) P43002897
 ABC MS 4084 BLAZE 8047 (8047) 42944092

R VISIONARY 4200 (4200) P43108101
 GENOA MS 4200 VISIONARY 14058 (14058) P43478726
 GENOA MISS LEGEND 11114 (11114) P43174299

SHE VISION R117 U38 (U38) P42894861
 R MISS PUCKSTER 1768 (1768) 42913869
 R LEGEND 2218 (2218) P42913915
 R&R 6378 LEANNE 6003 8003 (8003) P42928365

[Lot 4] GENOA 0708 FLASH 23021

Reg.: 44455500 | Calved: 02/23/2023 | Tattoo: 3021 | Horned

CE	BW	WW	YW	DMI	SC	SCF	MM	M&G	MCE
9.4	1.8	71	119	0.6	1.4	21.7	39	74	10.6
MCW	UDDR	TEAT	CW	FAT	REA	MARB	\$BMI	\$BII	\$CHB
107	1.20	1.20	83	0.042	0.72	0.12	451	542	136



- Twin to Lot 3.
- Flash son with added frame and length of body. Dark red, short-marked bull with WW and YW EPDs in the top 5%.
- His dam has withstood the test of time with a lifetime calving interval of 365 days and her six bull calves have averaged \$7,375.
- RATIOS: BW 100%, WW 105%
- EPDS: Top 1% M&G, MCE; Top 5% WW, YW, MILK; Top 10% CED, SCF, REA, BMI; Top 15% SC, CW; Top 20% CHB



TH FRONTIER 174E (174E) P43818822
 H FLASH 0708 ET (0708) P44233202
 ABC MS 100W BLAZE 4015 (4015) 43538605

TH 403A 475Z PIONEER 358C ET (358C) P43596960
 FTF TRUSTING LADY 312A (312) P43383673
 NJW 73S M326 TRUST 100W ET (73S100W) P43002897
 ABC MS 4084 BLAZE 8047 (8047) 42944092

R VISIONARY 4200 (4200) P43108101
 GENOA MS 4200 VISIONARY 14058 (14058) P43478726
 GENOA MISS LEGEND 11114 (11114) P43174299

SHE VISION R117 U38 (U38) P42894861
 R MISS PUCKSTER 1768 (1768) 42913869
 R LEGEND 2218 (2218) P42913915
 R&R 6378 LEANNE 6003 8003 (8003) P42928365



TH FRONTIER 174E (174E) P43818822
H FLASH 0708 ET (0708) P44233202
 ABC MS 100W BLAZE 4015 (4015) 43538605

R VISIONARY 4200 (4200) P43108101
GENOA MISS VISIONARY 14013 (14013) P43478772
 GENOA MISS PUCKSTER 10016 (10016) P43113087

TH 403A 475Z PIONEER 358C ET (358C) P43596960
 FT F TRUSTING LADY 312A (312) P43383673
 NJW 73S M326 TRUST 100W ET (73S100W) P43002897
 ABC MS 4084 BLAZE 8047 (8047) 42944092

SHF VISION R117 U38 (U38) P42894861
 R MISS PUCKSTER 1768 (1768) 42913869
 R PUCKSTER 4108 (4108) P42914072
 HYALITE TS LASS 873 (873) P42893817



NJW 79Z Z311 ENDURE 173D ET (79Z173D) P43722088
LOEWEN GENESIS G16 ET (G16) P43987463
 LOEWEN 77 48 MISS 344N 4RB42ET (B42) P43461646

NJW 135U 10Y HOMETOWN 27A (135U27A) P43385145
GENOA MISS 27AHOMETOWN 19090ET (9090) P44012565
 R&R 6378 LEANNE 6003 8003 (8003) P42928365

KCF BENNETT ENCORE Z311 ET (Z311) P43387256
 BW 91H 100W RITA 79Z ET (91H79Z) P43311375
 MSU TCF REVOLUTION 4R (4R) P42593689
 PCR JACKLYN NIKOLE 344N (PCR344N) P42408229

NJW 73S W18 HOMETOWN 10Y ET (73S10Y) P43214853
 NJW 4037 34S DURANGO VACA 135U (34S135U) P42892084
 R&R PRIME CUT 6378 ET (6378) P42763764
 R&R SILVEIRAS LILY LEANNE 6003ET (6003) P42763766



TH FRONTIER 174E (174E) P43818822
H FLASH 0708 ET (0708) P44233202
 ABC MS 100W BLAZE 4015 (4015) 43538605

NJW 33TB 100W TRUST 167Y (33TB167Y) P43214415
GENOA MISS 167Y TRUST 19097 (9097) P44011812
 GENOA MISS PUCKSTER 10155 (10155) P43119165

TH 403A 475Z PIONEER 358C ET (358C) P43596960
 FT F TRUSTING LADY 312A (312) P43383673
 NJW 73S M326 TRUST 100W ET (73S100W) P43002897
 ABC MS 4084 BLAZE 8047 (8047) 42944092

NJW 73S M326 TRUST 100W ET (73S100W) P43002897
 BROOKVIEW 242 TEQUILA ROSE 33T (33T) P42827719
 R PUCKSTER 4108 (4108) P42914072
 R&R 6378 LEANNE 6003 8003 (8003) P42928365

[Lot 5] GENOA 0708 FLASH 23026

Reg.: 44455619 | Calved: 02/24/2023 | Tattoo: 3026 | Horned

CE	BW	WW	YW	DMI	SC	SCF	MM	M&G	MCE
7.8	0.1	57	85	0.1	1.5	15.9	33	61	1.1

MCW	UDDR	TEAT	CW	FAT	REA	MARB	\$BMI	\$BII	\$CHB
95	1.20	1.30	53	0.022	0.22	0.14	332	408	98



- Dark red, short-marked, horned Flash son, his dam is currently nursing her 9th AI calf. Longevity and fertility runs deep in his pedigree; his dam has maintained a 370 day calving interval.
- RATIOS: BW 97%, SC 104%
- EPDs: Top 10% BW, SC; Top 15% MILK; Top 20% CED, M> Top 25% DMI

[Lot 6] GENOA G16 GENESIS 23031 ET

Reg.: 44455452 | Calved: 02/24/2023 | Tattoo: 3031 | Polled

CE	BW	WW	YW	DMI	SC	SCF	MM	M&G	MCE
6.2	2.5	65	108	0.4	1.7	20.6	27	59	6.2

MCW	UDDR	TEAT	CW	FAT	REA	MARB	\$BMI	\$BII	\$CHB
121	1.60	1.50	77	0.072	0.31	0.43	436	543	152



- Full brother topped the 2023 Bull Sale.
- Flush brothers sell as Lots 19, 23 & 29.
- 3031 catches your attention, being ideally marked and goggled eyed but is also very complete, good footed and so sound while in motion.
- His EPD profile is second to none, with both key maternal and carcass traits in the top 25% of the breed.
- His dam is the ideal cow for our environment. She is feminine, lots of capacity through her rib cage, beautiful square udder, all while being short marked and goggled eyed.
- RATIOS: FAT 72%
- EPDS: Top 1% UDDER, TEAT; Top 5% SC, MARB; Top 10% YW, MCE, CHBS; Top 15% WW; Top 20% BMI; Top 25% CED, SCF, CW

[Lot 7] GENOA 0708 FLASH 23047

Reg.: 44455561 | Calved: 02/28/2023 | Tattoo: 3047 | Polled

CE	BW	WW	YW	DMI	SC	SCF	MM	M&G	MCE
9.4	1.1	54	94	0.2	1.3	21.2	30	57	6.6

MCW	UDDR	TEAT	CW	FAT	REA	MARB	\$BMI	\$BII	\$CHB
95	1.40	1.40	69	0.032	0.28	0.32	436	524	141



- Heifer bull prospect that is conservatively marked, with all of the traits to make range replacement females.
- 3047 is backed by some of the longest lasting, fertile cows, not only here at the ranch, but in the entire breed. To mention a few: 0155, 8003, and NJW 73S twice.
- RATIOS: BW 90%, FAT 91%
- EPDS: Top 10% MCE, UDDER, MARB; Top 15% CED, BW, SC, SCF, BMI, CHBS; Top 25% DMI, MILK

[Lot 8] GENOA 8339 HIGH NOON 23049

Reg.: 44455600 | Calved: 02/28/2023 | Tattoo: 3049 | Horned

CE	BW	WW	YW	DMI	SC	SCF	MM	M&G	MCE
0.7	1.5	62	88	0.6	1.4	18.3	40	71	1.2

MCW	UDDR	TEAT	CW	FAT	REA	MARB	\$BMI	\$BII	\$CHB
58	1.10	1.20	86	0.022	0.81	0.15	396	477	130



- Masculine and rugged High Noon son, that is deep through his chest floor, clean sheath, and wide over his top, with a big ribeye and packed with rapid performance from birth to weaning.
- RATIOS: BW 99%, WW 112%, YW 104%, FAT 59%, REA 108%.
- EPDS: Top 1% MILK; Top 5% M&G, MCW, REA; Top 10% SC, CW; Top 20% WW; Top 25% BW, BMIS, CHBS



CHURCHILL GRIT 624D ET (6244) P43715316
 CHURCHILL HIGH NOON 8339F ET (8339) 44000066
 H FHF 9116 RITA 11D ET (11D) P4372812

C ETF WILDCAT 4248 ET (4248) P43487262
 SR CCC LADYSPORT 2205 Z ET (2205) P43361267
 PYRAMID 16W 110T 9116 (16W) P42989530
 FHF 408 RITA 21W (9021) P42988350

CHURCHILL SENSATION 028X (028) 43092364
 GENOA MS 028X SENSATION 16031 (6031) 43682176
 GENOA MISS RIBSTONE 11024 ET (11024) 43174233

UPS DOMINO 3027 (3027) 42426386
 CHURCHILL LADY 7202T ET (7202) 42856776
 K 64H RIBSTONE LAD 157K (CJK157K) 42267708
 F 9126 DOMINETTE 407 (407) 42472273

[Lot 9] GENOA 0708 FLASH 23055

Reg.: 44455577 | Calved: 03/01/2023 | Tattoo: 3055 | Horned

CE	BW	WW	YW	DMI	SC	SCF	MM	M&G	MCE
7.2	1.4	71	120	0.6	1.7	18.4	42	77	5.2

MCW	UDDR	TEAT	CW	FAT	REA	MARB	\$BMI	\$BII	\$CHB
93	1.40	1.40	93	0.032	0.97	0.20	422	514	159



- A lot of look and quality in this solid marked Flash son out of a Hutton daughter.
- Well balanced, long-spined, with high ratios and EPDs for rapid growth and CHBS all in the top 5% of the breed.
- RATIOS: WW 103%, YW 107%, SC 102% FAT 91%, REA 105%, MARB 103%
- EPDS: Top 1% YW, MILK, M&G, REA; Top 5% WW, SC, CW, CHBS; Top 10% MCE, UDDER, TEAT; Top 15% CED; Top 20% BMIS; Top 25% BW



TH FRONTIER 174E (174E) P43818822
 H FLASH 0708 ET (0708) P4423202
 ABC MS 100W BLAZE 4015 (4015) 43538605

TH 403A 475Z PIONEER 358C ET (358C) P43596960
 FTF TRUSTING LADY 312A (312) P43383673
 NJW 73S M326 TRUST 100W ET (73S100W) P43002897
 ABC MS 4084 BLAZE 804T (804T) 42944092

NJW 73S 980 HUTTON 109Z ET (73S109Z) 43311893
 GENOA MISS 109Z HUTTON 18209 (8209) 43955070
 GENOA MISS DOMINO 0945 15137 (5137) 43632604

CRR HELTON 980 (980) P43032013
 NJW P606 72N DAYDREAM 73S (72N73S) P42693956
 LJS MARK DOMINO 0945 (0945) 43000470
 GENOA MISS UPS 3027 12177 (12177) 43349441

[Lot 10] GENOA 942G DOMINO 23057

Reg.: 44455565 | Calved: 03/02/2023 | Tattoo: 3057 | Horned

CE	BW	WW	YW	DMI	SC	SCF	MM	M&G	MCE
5.2	2.8	63	99	0.4	1.4	20.0	21	52	3.9

MCW	UDDR	TEAT	CW	FAT	REA	MARB	\$BMI	\$BII	\$CHB
118	1.40	1.40	81	0.042	0.45	0.09	413	495	124



- Straight Horned pedigree bull that is moderate framed, short marked, clean sheathed with a clean shoulder.
- Tight uddered, small teated Sensation dam has ratioed 110 on three calves for Marb and 3057 ratioed 107%.
- RATIOS: BW 98%, WW 107%, YW 101%, FAT 96%, MARB 107%
- EPDS: Top 10% TEAT; Top 15% SC; Top 20% SCF, MCE, CW, BMIS; Top 25% WW, UDDER



CL 1 DOMINO 7131E 1ET (7131) 43810450
 CL 1 DOMINO 942G (942) 44010158
 CL 1 DOMINETTE 664D 1ET (664) 43691958

HH ADVANCE 5044C ET (5044) 43578992
 CL 1 DOMINETTE 3175A (3175) 43379690
 CL1 DOMINO 412B (412) 43469469
 CL 1 DOMINETTE 1146V (1146) 43189521

UPS SENSATION 2296 ET (2296) 43311175
 GENOA MISS 2296SENSATION 19108 (9108) 44011872
 GENOA LI DOMINETTE 09037 (09037) 43043088

CHURCHILL SENSATION 028X (028) 43092364
 UPS JT MISS NEON 7811 1ET (7811) P42827389
 LI DOMINO 02398 (02398) 42256964
 LI DOMINETTE 0610 (0610) 42892936

[LOT 11] GENOA THOMAS COUNTY 23058 ET

Reg.: 44455504

Calved: 03/02/2023

Tattoo: 3058

Polled



- This bull has always been an easy one to find, ever since birth.
- Complete and balanced is what comes to mind when you see him.
- 3058 is smooth, yet has dimension, length and depth through his chest and rib.
- His dam "6054" is ideal in her kind and one of the prettiest Hometown females on the ranch.
- His sire Thomas County was grand champion bull in Denver in 2023.
- RATIOS: FAT 66%, REA 102%
- EPDS: 1% UDDER, TEAT; Top 5% SC, SCF, CW, BMI\$, CHB\$; Top 15% CE, REA, MARB; Top 25% MCW

CE	BW	WW	YW	DMI	SC	SCF	MM	M&G	MCE
8.0	2.0	61	98	0.9	1.7	26.7	31	61	3.2

MCW	UDDR	TEAT	CW	FAT	REA	MARB	\$BMI	\$BII	\$CHB
78	1.50	1.50	93	0.052	0.65	0.30	523	619	150



EFBEEF RESOLUTE CEO (PEFC609) P43591829
H WMS THOMAS COUNTY 1443 ET (1443) P44257454
 H MS EXCEL 7945 ET (7945) P43857538

KCF BENNETT REVOLUTION X51 (X51) P43081556
 EFBEEF 6378 KATE W484 (PEFW484) P43032139
 BEHM 100W CUDA 504C (BEHM504C) P43636764
 H MS 824 EXCEL 4146 ET (4146) P43482081

NJW 73S W18 HOMETOWN 10Y ET (73S10Y) P43214853
GENOA MISS HOMETOWN 10Y 16054 (6054) P43682590
 GENOA MISS PUCKSTER 10155 (10155) P43119165

SHF WONDER M326 W18 ET (W18) P42991698
 NJW P606 72N DAYDREAM 73S (72N73S) P42693956
 R PUCKSTER 4108 (4108) P42914072
 R&R 6378 LEANNE 6003 8003 (8003) P42928365

[Lot 12] GENOA BELLE AIR 23059 ET

Reg.: 44455512 | Calved: 03/02/2023 | Tattoo: 3059 | Horned

CE	BW	WW	YW	DMI	SC	SCF	MM	M&G	MCE
1.9	2.7	60	100	0.0	1.7	23.0	36	66	-0.5

MCW	UDDR	TEAT	CW	FAT	REA	MARB	\$BMI	\$BII	\$CHB
99	1.30	1.20	78	0.052	0.70	0.48	495	599	171



- 3059 fits the demands of the current beef industry.
- Excels with longevity with his dam's proven track record; she was in production until she was 12 years old. Add pounds with a heavy weaning and yearling weight and produce premium heavy carcasses to pay dividends on the rail.
- EPDS: Top 5% SC, MARB, BMIS, CHB%; Top 10% SCF, MILK, M&G, REA; Top 15% DMI; Top 25% YW, CW



BAR S LHF 028 240 (240) 43287538
 BR BELLE AIR 6011 (6011) 43724674
 BR BELLE 4082 ET (4082) 43514206

CHURCHILL SENSATION 028X (028) 43092364
 CHURCHILL LADY 078X (078) 43092363
 GOLDEN OAK OUTCROSS 18U (GORX18U) P42963135
 BR CSF BRIELLE 8052 ET (CSF8052) P42970587

UPS DOMINO 3027 (3027) 42426386
 GENOA MISS DOMINO 3027 11067 (11067) 43174305
 R MISS ADVANCE 3318 (3318) 42914021

CL 1 DOMINO 9126J IET (9126) 41113279
 UPS MISS DIAMOND 1353 (1353) 42181624
 HR ADVANCER 65 (65) 42715786
 R MISS PAGE 1016 (1016) 42715422

[Lot 13] GENOA 19091 BELLE AIR 23060

Reg.: 44455552 | Calved: 03/02/2023 | Tattoo: 3060 | Horned

CE	BW	WW	YW	DMI	SC	SCF	MM	M&G	MCE
-0.1	2.3	74	119	0.7	2.2	20.5	36	73	-1.6

MCW	UDDR	TEAT	CW	FAT	REA	MARB	\$BMI	\$BII	\$CHB
124	1.40	1.40	87	0.032	0.68	0.26	442	544	148



- A large scrotal 9091 son with exceptional length, depth, pounds, presence and muscle.
- His dam is a feminine long bodied, pretty uddered Line 1 cow whose dam is 1067.
- He weighed down the scale at both WW and YW, and posted a marbling ratio of 122%
- RATIOS: WW 116%, YW 107%, SC 108%, REA 107%, IMF 122%
- EPDS: Top 1% SC; Top 5% WW, YW, M&G, UDDER, TEAT, CW; Top 10% SCF, MILK, REA, BMIS, CHBS; Top 15% MARB



BR BELLE AIR 6011 (6011) 43724674
 GENOA 6011 BELLE AIR 19091 (9091) P44011891
 GENOA MISS HOMETOWN 10Y 15047 (15047) P43585109

BAR S LHF 028 240 (240) 43287538
 BR BELLE 4082 ET (4082) 43514206
 NJW 73S W18 HOMETOWN 10Y ET (73S10Y) P43214853
 HYALITE TS LASS 547 (547) P42564481

HH ADVANCE 5044C ET (5044) 43578992
 GENOA MS 5044C ADVANCE 19137ET (9137) 44011787
 GENOA MISS DOMINO 3027 11067 (11067) 43174305

CL 1 DOMINO 215Z (215) 43268007
 HH MISS ADVANCE 1072Y ET (1072) 43173106
 UPS DOMINO 3027 (3027) 42426386
 R MISS ADVANCE 3318 (3318) 42914021

[Lot 14] GENOA 19091 BELLE AIR 23062

Reg.: 44455575 | Calved: 03/02/2023 | Tattoo: 3062 | scurred

CE	BW	WW	YW	DMI	SC	SCF	MM	M&G	MCE
-0.2	4.1	71	117	0.8	2.9	20.2	34	70	-0.3

MCW	UDDR	TEAT	CW	FAT	REA	MARB	\$BMI	\$BII	\$CHB
111	1.20	1.20	78	0.072	0.16	0.48	422	539	147



- 9091 son with exceptional growth all the way through yearling.
- He is short-marked with added length of spine and frame size.
- Strong set of EPDS and ratios for growth, carcass weight, marbling and sustained cow fertility.
- RATIOS: WW 110%, YW 107%, SC 113%, FAT 91%, REA 100%, MARB 112%
- EPDS: Top 1% SC; Top 5% WW, YW, M&G, MARB; Top 10% MILK, CHBS; Top 15% SCF, BMIS; Top 25% CW



BR BELLE AIR 6011 (6011) 43724674
 GENOA 6011 BELLE AIR 19091 (9091) P44011891
 GENOA MISS HOMETOWN 10Y 15047 (15047) P43585109

BAR S LHF 028 240 (240) 43287538
 BR BELLE 4082 ET (4082) 43514206
 NJW 73S W18 HOMETOWN 10Y ET (73S10Y) P43214853
 HYALITE TS LASS 547 (547) P42564481

HH ADVANCE 5044C ET (5044) 43578992
 GENOA MISS 5044C ADVANCE 19079 (9079) 44011789
 GENOA 3027 DOMINETTE 13003 (13003) 43376785

CL 1 DOMINO 215Z (215) 43268007
 HH MISS ADVANCE 1072Y ET (1072) 43173106
 UPS DOMINO 3027 (3027) 42426386
 GENOA ROSETTA 11029 ET (11029) 43174231



CHURCHILL GRIT 6244D ET (6244) P43715316
 CHURCHILL HIGH NOON 8339F ET (8339) 44000066
 H FHF 9116 RITA 11D ET (11D) P43720812

CL 1 DOMINO 215Z (215) 43268007
 GENOA MISS 215Z DOMINO 19156 (9156) 44011949
 GENOA MISS YANKEE 14015 (14015) 43478662

C ETF WILDCAT 4248 ET (4248) P43487262
 SR CCC LADYSPORT 2205 Z ET (2205) P43361267
 PYRAMID 16W 110T 9116 (16W) P42989530
 FHF 408 RITA 21W (9021) P42988350

CL 1 DOMINO 9122W 1ET (9122) 42994842
 CL 1 DOMINETTE 085X (085) 43082256
 CHURCHILL YANKEE ET (6160) 42731411
 SR HARLET 704 (704) 42832125

[Lot 15] GENOA HIGH NOON 23073

Reg.: 44455514 | Calved: 03/04/2023 | Tattoo: 3073 | Horned

CE	BW	WW	YW	DMI	SC	SCF	MM	M&G	MCE
3.4	2.8	58	83	0.4	0.6	11.7	22	51	6.2

MCW	UDDR	TEAT	CW	FAT	REA	MARB	\$BMI	\$BII	\$CHB
100	1.20	1.20	77	0.022	0.45	0.25	295	376	130



- A balanced trait, medium framed High Noon sired bull.
- He is smooth made, his shoulder transitions effortlessly into his rib cage. He is strong in his top line and powerful through his hip.
- He is backed by a 215Z cow that stems back to an original cow family purchased from Stubers.
- RATIOS: BW 98%, FAT 64%, MARB 100%
- EPDS: Top 5% MCE; Top 20% MARB; Top 25% CHBS



H GENOA COMSTOCK 7934 ET (7934) P43857527
 GENOA 7934 COMSTOCK 21009 (1009) P44223692
 GENOA MISS 27AHOMETOWN 19076ET (9076) 44012563

R LEADER 6964 (6964) P43500058
 GENOA MISS 6964 LEADER 19025 (9025) P44011794
 GENOA MISS HOMETOWN 10Y (7024) P43782178

BEHM 100W CUDA 504C (BEHM504C) P43636764
 H MS 5139 ADVANCE 4006 ET (4006) 43487689
 NJW 135U 10Y HOMETOWN 27A (135U27A) P43385145
 R&R 6378 LEANNE 6003 8003 (8003) P42928365

HYALITE ON TARGET 936 (936) P42986803
 R MISS REVOLUTION 1009 (1009) P43011690
 NJW 738 W18 HOMETOWN 10Y ET (73810Y) P43214853
 GENOA MISS REVOLUTION 12092 (12092) P43282488

[Lot 16] GENOA 21009 COMSTOCK 23074

Reg.: 44455584 | Calved: 03/04/2023 | Tattoo: 3074 | Polled

CE	BW	WW	YW	DMI	SC	SCF	MM	M&G	MCE
3.8	3.2	75	109	0.7	2.1	13.1	27	64	-1.9

MCW	UDDR	TEAT	CW	FAT	REA	MARB	\$BMI	\$BII	\$CHB
127	1.40	1.40	78	0.062	0.56	0.20	313	408	121



- A long-sided Comstock grandson out of a Leader daughter.
- Added length of body, capacity, rib shape, bone, and scrotal development.
- 3074's sire was a top selling bull from our 2022 sale. We retained a semen interest and have a great display of his calves in the pasture this summer. He is also a grandson of the 8003 donor.
- RATIOS: WW 109%, YW 102%, SC 108%, Fat 86%
- EPDS: Top 1% SC; Top 5% WW; Top 10% YW, M&G, UDDER; Top 15% TEAT; Top 25% CW, MARB



INNISFAIL WHR 651/723 4013 ET (IF4013) P43541960
 C REAL DEAL 0137 ET (137) P44122963
 C CJC 89T MISS MILES 4264 ET (4264) P43487278

NJW LONG HAUL 36E ET (11B36E) P43829326
 GENOA MISS 36E LONG HAUL 20092 (0092) P44131209
 GENOA MISS ON TARGET 936 17096 (7096) P43783116

EFBEEF TFL U208 TESTED X651 ET (PEFX651) P43091736
 INNISFAIL P230 T723 (IFT723) P42843247
 C MILES MCKEE 2103 ET (2103) 43270668
 TH 16G 20N GEMINI 89T (TH89T) P42779363

CHURCHILL SENSATION 028X (028) 43092364
 NJW 79Z 10W RITA 11B (79Z11B) P43483038
 HYALITE ON TARGET 936 (936) P42986803
 GENOA MS 4200 VISIONARY 14010 (14010) P43478699

[Lot 17] GENOA 0137 REAL DEAL 23077

Reg.: 44455481 | Calved: 03/04/2023 | Tattoo: 3077 | Polled

CE	BW	WW	YW	DMI	SC	SCF	MM	M&G	MCE
9.6	2.0	71	110	0.6	1.3	12.1	35	70	7.7

MCW	UDDR	TEAT	CW	FAT	REA	MARB	\$BMI	\$BII	\$CHB
82	1.40	1.40	74	0.042	0.59	0.26	300	394	130



- A high-quality Real Deal son out of a beautiful uddered heavy milking Long Haul dam.
- His dam has one of the soggiest and stoutest heifer calves in the pasture this summer.
- RATIOS: WW 109%, YW 104%, REA 105%
- EPDS: Top 5% WW, M&G, MCE; Top 10% CED, YW, MILK, UDDER, TEAT; Top 15% MARB; Top 20% SC, REA; Top 25% CHBS

[Lot 18] GENOA 8339 HIGH NOON 23079

Reg.: 44455482 | Calved: 03/04/2023 | Tattoo: 3079 | Horned

CE	BW	WW	YW	DMI	SC	SCF	MM	M&G	MCE
7.9	0.7	54	91	0.4	1.0	19.4	27	54	7.3

MCW	UDDR	TEAT	CW	FAT	REA	MARB	\$BMI	\$BII	\$CHB
100	1.40	1.40	72	0.042	0.56	0.14	401	475	121



- A dark, short-marked, goggle-eyed heifer bull prospect, with CED and BW both in the top 15% of the breed.
- He is masculine, deep through his chest , wider over his top and great on the move.
- He is out of a big bodied, pretty uddered Belle Air daughter. • RATIOS: BW 89%, FAT 86%
- EPDS: Top 5% MCE, TEAT; Top 10% UDDR; Top 15% CED, BW



CHURCHILL GRIT 624D ET (6244) P43715316
 CHURCHILL HIGH NOON 8339F ET (8339) 44000066
 H FHF 9116 RITA 11D ET (11D) P43720812

C ETF WILDCAT 4248 ET (4248) P43487262
 SR CCC LADYSPORT 2205 Z ET (2205) P43361267
 PYRAMID 16W 110T 9116 (16W) P42989530
 FHF 408 RITA 21W (9021) P42988350

BR BELLE AIR 6011 (6011) 43724674
 GENOA MS 6011 BELL AIR 8097 ET (8097) 43889238
 GENOA MS HARLAND 408 11212 ET (11212) 43211199

BAR S LHF 028 240 (240) 43287538
 BR BELLE 4082 ET (4082) 43514206
 CJH HARLAND 408 (408) 42536808
 CL 1 DOMINETTE 243M (243) 42270334

[Lot 19] GENOA G16 GENESIS 23080 ET

Reg.: 44455456 | Calved: 03/04/2023 | Tattoo: 3080 | Polled

CE	BW	WW	YW	DMI	SC	SCF	MM	M&G	MCE
6.8	3.8	74	121	0.4	1.9	21.0	34	71	8.5

MCW	UDDR	TEAT	CW	FAT	REA	MARB	\$BMI	\$BII	\$CHB
108	1.40	1.30	104	0.062	0.80	0.39	481	591	189



- Flush brother to Lots 6, 23, and 29.
- A really complete Genesis son that is awesome on the move, fun to visually appraise, backed by the 8003 cow family and unmatched on paper.
- 3080 is smooth enough to promote calving ease, yet bold and expressive to confirm carcass weight in the top 1% of the breed.
- We have a bred heifer that is a flush sister to these four brothers that is feminine and elite and we can't wait to get her into production.
- RATIOS: REA 104%
- EPDS: Top 1% CW, CHBS; Top 5% WW, YW, SC, M&G, MCE, REA, MARB; Top 10% MILK, UDDER, BMIS; Top 15% TEAT; Top 20% CED, SCF



NJW 79Z Z311 ENDURE 173D ET (79Z173D) P43722088
 LOEWEN GENESIS G16 ET (G16) P43987463
 LOEWEN 77 48 MISS 344N 4RB42ET (B42) P43461646

KCF BENNETT ENCORE Z311 ET (Z311) P43387256
 BW 91H 100W RITA 79Z ET (91H79Z) P43311375
 MSU TCF REVOLUTION 4R (4R) P42593689
 PCR JACKLYN NIKOLE 344N (PCR344N) P42408229

NJW 135U 10Y HOMETOWN 27A (135U27A) P43385145
 GENOA MISS 27AHOMETOWN 10090ET (9090) P44012565
 R&R 6378 LEANNE 6003 8003 (8003) P42928365

NJW 73S W18 HOMETOWN 10Y ET (73S10Y) P43214853
 NJW 4037 34S DURANGO VACA 135U (34S135U) P42892084
 R&R PRIME CUT 6378 ET (6378) P42763764
 R&R SILVEIRAS LILY LEANNE 6003ET (6003) P42763766

[Lot 20] GENOA 9091 BELLE AIR 23082

Reg.: 44455580 | Calved: 03/04/2023 | Tattoo: 3082 | scurred

CE	BW	WW	YW	DMI	SC	SCF	MM	M&G	MCE
3.3	2.2	59	93	0.5	2.5	22.0	40	69	0.1

MCW	UDDR	TEAT	CW	FAT	REA	MARB	\$BMI	\$BII	\$CHB
92	1.40	1.40	91	0.082	0.48	0.43	468	569	163



- Freckle faced 9091 son out of a really neat uddered Line One cow that is easy fleshing and attractive to look at.
- Positive ratios across the board from performance to carcass traits.
- 3082 is well-balanced, long-spined, with ample rib and muscle in a big-topped smooth-shouldered package.
- RATIOS: BW 95%, WW 106%, YW 103%, REA 109%, MARB 128%
- EPDS: Top 1% SC; Top 5% MILK, M&G, CW, MARB, BMIS, CHBS; Top 10% SCF, UDDER, TEAT



BR BELLE AIR 6011 (6011) 43724674
 GENOA 6011 BELLE AIR 19091 (9091) P44011891
 GENOA MISS HOMETOWN 10Y 15047 (15047) P43585109

BAR S LHF 028 240 (240) 43287538
 BR BELLE 4082 ET (4082) 43514206
 NJW 73S W18 HOMETOWN 10Y ET (73S10Y) P43214853
 HYALITE TS LASS 547 (547) P42564481

CL 1 DOMINO 710E 1ET (710) 43800218
 GENOA MISS 710E DOMINO 20041 (0041) 44131259
 GENOA MS 028X SENSATION 16111 (6111) 43685556

CL 1 DOMINO 215Z (215) 43268007
 IH MISS ADVANCE 9119W (9119) 42999396
 CHURCHILL SENSATION 028X (028) 43092364
 GENOA MISS RIBSTONE 11035 ET (11035) 43174239



[Lot 21] GENOA 8339 HIGH NOON 23087
 Reg.: 4445598 | Calved: 03/05/2023 | Tattoo: 3087 | Horned

CE	BW	WW	YW	DMI	SC	SCF	MM	M&G	MCE
0.2	2.1	62	96	0.6	0.8	16.0	26	57	0.2

MCW	UDDR	TEAT	CW	FAT	REA	MARB	\$BMI	\$BII	\$CHB
86	1.30	1.20	79	0.002	0.86	0.14	359	436	127



- High Noon sired bull comes with extra rib shape and added depth to his flank and heart girth.
- 3087 is tight sheathed, smooth through his shoulder, easy fleshing, level over his topline with a good set to his hind leg.
- RATIOS: BW 98%, WW 104%, FAT 70%, REA 109%
- EPDS: Top 5% REA; Top 20% CW, FAT; Top 25% WW, UDDER

CHURCHILL GRIT 6244 ET (6244) P43715316
 CHURCHILL HIGH NOON 8339F ET (8339) 44000066
 H FHF 9116 RITA 11D ET (11D) P43720812

CL 1 DOMINO 215Z (215) 43268007
 GENOA MISS 215Z DOMINO 19151 (9151) 44011761
 GENOA MS 028X SENSATION 16031 (6031) 43682176

C ETF WILDCAT 4248 ET (4248) P43487262
 SR CCC LADYSPOUT 2205 Z ET (2205) P43361267
 PYRAMID 16W 110T 9116 (16W) P42989530
 FHF 408 RITA 21W (9021) P42988350

CL 1 DOMINO 9122W 1ET (9122) 42994842
 CL 1 DOMINETTE 055X (055) 43082256
 CHURCHILL SENSATION 028X (028) 43092564
 GENOA MISS RIBSTONE 11024 ET (11024) 43174233



NJW 79Z Z311 ENDURE 173D ET (79Z173D) P43722088
 LOEWEN GENESIS G16 ET (G16) P43987463
 LOEWEN 77 48 MISS 344N 4RB42ET (B42) P43461646

NJW 73S W18 HOMETOWN 10Y ET (73S10Y) P43214853
 GENOA MISS HOMETOWN 10Y 15047 (15047) P43585109
 HYALITE TS LASS 547 (547) P42564481

KCF BENNETT ENCORE Z311 ET (Z311) P43387256
 BW 91H 100W RITA 79Z ET (91H79Z) P43311375
 MSU TCF REVOLUTION 4R (4R) P42593689
 PCR JACKLYN NIKOLE 344N (PCR344N) P42408229

SHF WONDER M326 W18 ET (W18) P42991698
 NJW P606 72N DAYDREAM 73S (72N73S) P42693956
 KT TOP SECRET 1030 (1030) P42205594
 HYALITE 233 LASS 205 (205) P42268115

[Lot 22] GENOA G16 GENESIS 23090 ET
 Reg.: 44455521 | Calved: 03/06/2023 | Tattoo: 3090 | Polled

CE	BW	WW	YW	DMI	SC	SCF	MM	M&G	MCE
1.6	2.6	65	111	0.7	1.6	20.8	37	70	1.6

MCW	UDDR	TEAT	CW	FAT	REA	MARB	\$BMI	\$BII	\$CHB
93	1.30	1.10	95	0.072	0.74	0.41	458	562	171



- A ton of shape and dimension in this heavy structured Genesis son. Dam is the go-to 10Y donor "5047."
- 3090 is deep bodied, soft flanked, good footed — just a true beef bull. He is easy fleshing with a lot of natural width at the ground and over his top line.
- A full sister was the pick of our pen in Denver at the National Western Stock Show in 2023.
- RATIOS: FAT 83%, REA 117%
- EPDS: Top 5% SC, MILK, M&G, CW, MARB, BMIS, CHBS; Top 10% YW, REA Top 15% WW, SCF; Top 25% UDDER



NJW 79Z Z311 ENDURE 173D ET (79Z173D) P43722088
 LOEWEN GENESIS G16 ET (G16) P43987463
 LOEWEN 77 48 MISS 344N 4RB42ET (B42) P43461646

NJW 135U 10Y HOMETOWN 27A (135U27A) P43385145
 GENOA MISS 27AHOMETOWN 19090ET (9090) P44012565
 R&R 6378 LEANNE 6003 8003 (8003) P42928365

KCF BENNETT ENCORE Z311 ET (Z311) P43387256
 BW 91H 100W RITA 79Z ET (91H79Z) P43311375
 MSU TCF REVOLUTION 4R (4R) P42593689
 PCR JACKLYN NIKOLE 344N (PCR344N) P42408229

NJW 73S W18 HOMETOWN 10Y ET (73S10Y) P43214853
 NJW 4037 34S DURANGO VACA 135U (34S135U) P42892084
 R&R PRIME CUT 6378 ET (6378) P42763764
 R&R SILVEIRAS LILY LEANNE 6003ET (6003) P42763766

[Lot 23] GENOA G16 GENESIS 23092 ET
 Reg.: 44455457 | Calved: 03/07/2023 | Tattoo: 3092 | Polled

CE	BW	WW	YW	DMI	SC	SCF	MM	M&G	MCE
8.7	1.7	62	99	0.4	1.4	19.4	27	58	6.0

MCW	UDDR	TEAT	CW	FAT	REA	MARB	\$BMI	\$BII	\$CHB
114	1.50	1.50	84	0.062	0.46	0.50	430	537	166



- If you are drawn to the deep red color and big goggled eyes, 3092 will stand out on sale day.
- He is a flush brother to Lots 6, 19, and 23. His dam is well on her way to becoming a matriarch on the ranch like her dam 8003, with another incredible set of ET calves in the pasture this summer.
- Elite carcass figures for marbling and highly maternal traits both top and bottom side of his pedigree.
- EPDS: Top 1% UDDER, MARB; Top 5% TEAT, CHBS; Top 10% CED, MCE; Top 15% CW; Top 20% SC, BMIS; Top 25% WW, YW

[Lot 24] GENOA 942G DOMINO 23093

Reg.: 44455559 | Calved: 03/07/2023 | Tattoo: 3093 | Horned

CE	BW	WW	YW	DMI	SC	SCF	MM	M&G	MCE
10.8	0.0	56	88	0.4	1.9	16.3	30	58	6.8
MCW	UDDR	TEAT	CW	FAT	REA	MARB	\$BMI	\$BII	\$CHB
92	1.30	1.30	84	0.092	0.27	0.33	366	456	144



- Masculine 942G son that checks a lot of boxes. He has length of body and added dimension that is put together very well.
- 3093 is rugged in his kind with big testicles, soft flanked and sturdy through his topline.
- His dam is a hardworking, heavy milking Boomtown daughter. She has ratioed 4@95 BW, Nursing ration @ 108.5 and carcass ratios on 4 calves above herd avg.
- RATIOS: BW 96%, WW 107%, YW 101%, SC 105% REA 104%, MARB 113%
- EPDS: Top 5% CED, SC, MCE; Top 10% BW, CW, MARB; Top 15% CHBS



CL 1 DOMINO 7131E 1ET (7131) 43810450
 CL 1 DOMINO 942G (942) 44010158
 CL 1 DOMINETTE 664D 1ET (664) 43691958

BH ADVANCE 5044C 1ET (5044) 43578992
 CL 1 DOMINETTE 3175A (3175) 43379690
 CL 1 DOMINO 412B (412) 43469469
 CL 1 DOMINETTE 1146Y (1146) 43189521

/S JBB/AL BOOM TOWN 44608 (44608) P43567160
 GENOA MS 44608 BOOMTOWN 18018 (8018) 43883691
 GENOA MISS 0945 DOMINO 16119 (6119) 43685566

NJW 73S W18 HOMETOWN 10Y 1ET (73S10Y) P43214853
 /S LADY THOR 1271Y (1271) 43241769
 /S MARK DOMINO 0945 (0945) 43000470
 GENOA MS HARLAND 408 09036 (09036) 43041494

[Lot 25] GENOA 0137 REAL DEAL 23094 ET

Reg.: 44455491 | Calved: 03/07/2023 | Tattoo: 3094 | Polled

CE	BW	WW	YW	DMI	SC	SCF	MM	M&G	MCE
8.1	2.7	66	100	0.6	1.2	18.5	29	62	5.1
MCW	UDDR	TEAT	CW	FAT	REA	MARB	\$BMI	\$BII	\$CHB
102	1.50	1.50	84	0.032	0.49	0.30	404	500	144



- Double goggled-eyed Real Deal son with length of body in a balanced and eye appealing package.
- 3094 is extended in his front one third and impeccable in his structure.
- His dam is a maternal sister to Lot 11. His grandam is still youthful at eight years old and his great grandam had an average calving interval of 370 days on 11 calves.
- RATIOS: FAT 89%, REA 102%
- EPDS: 5% UDDR, TEAT; Top 10% CW, MARB, CHBS; Top 15% CED, WW, MCE; Top 20% M- Top 25% YW



INNISFAIL WHR X651723 4013 ET (IF4013) P43541960
 C REAL DEAL 0137 ET (137) P44122963
 C CJC 89T MISS MILES 4264 ET (4264) P43487278

EBBEEF TFL U208 TESTED X651 ET (PEFX651) P43091736
 INNISFAIL P230 T723 (IFT723) P42843247
 C MILES MCKEE 2103 ET (2103) 43270668
 TH 16G 20N GEMINI 89T (TH89T) P42779363

R LEADER 6964 (6964) P43500058
 GENOA MISS 6964 LEADER 18027 (8027) P43883702
 GENOA MISS HOMETOWN 10Y 16054 (6054) P43682590

HYALITE ON TARGET 936 (936) P42986803
 R MISS REVOLUTION 1009 (1009) P43011690
 NJW 73S W18 HOMETOWN 10Y 1ET (73S10Y) P43214853
 GENOA MISS PUCKSTER 10155 (10155) P43119165

[Lot 26] GENOA 21009 COMSTOCK 23097

Reg.: 44455542 | Calved: 03/07/2023 | Tattoo: 3097 | Polled

CE	BW	WW	YW	DMI	SC	SCF	MM	M&G	MCE
-0.8	3.8	66	100	0.2	1.4	21.7	35	68	-3.6
MCW	UDDR	TEAT	CW	FAT	REA	MARB	\$BMI	\$BII	\$CHB
112	1.50	1.50	72	0.002	0.42	0.19	447	538	130



- Short-marked and eye appealing grandson of Comstock that offers growth with added scrotal.
- 3097 is real easy going.
- Cow families on both sides of his pedigree are good-uddered very productive cows that wean big calves year in and year out.
- RATIOS: WW 109%, SC 101%, FAT 64%
- EPDS: Top 5% UDDR, TEAT; Top 10% SCF, MILK, M&G, BMI; Top 15% WW, SC, FAT; Top 25% YW, CHBS



H GENOA COMSTOCK 7934 ET (7934) P43857527
 GENOA 7934 COMSTOCK 21009 (1009) P44223692
 GENOA MISS 27AHOMETOWN 19076ET (9076) 44012563

BEHM 100W CUDA 504C (BEHM504C) P43636764
 H MS 5139 ADVANCE 4006 ET (4006) 43487689
 NJW 135U 10Y HOMETOWN 27A (135U27A) P43385145
 R&R 6378 LEANNE 6003 8003 (8003) P42928365

JDH VICTOR 719T 33Z ET (33Z) P43294080
 GENOA MISS 33Z VICTOR 20129 (0129) P44131185
 GENOA MISS HOMETOWN 10Y 17024 (7024) P43782178

TH 1227H VICTOR 719T (719) P42800895
 JDH MS YANKEE 11U ET (11U) P42916830
 NJW 73S W18 HOMETOWN 10Y 1ET (73S10Y) P43214853
 GENOA MISS REVOLUTION 12092 (12092) P43282488



TH FRONTIER 174E (174E) P43818822
H FLASH 0708 ET (0708) P4423202
 ABC MS 100W BLAZE 4015 (4015) 43538605

R VISIONARY 4200 (4200) P43108101
GENOA MS 4200 VISIONARY 15034 (15034) P43585141
 GENOA MISS REVOLUTION 12092 (12092) P43282488

TH 403A 475Z PIONEER 358C ET (358C) P43596960
 FTF TRUSTING LADY 312A (312) P43383673
 NJW 73S M326 TRUST 100W ET (73S100W) P43602897
 ABC MS 4084 BLAZE 8047 (8047) 42944092

SHF VISION RI17 U38 (U38) P42894861
 R MISS PUCKSTER 1768 (1768) 42913869
 MSU TCF REVOLUTION 4R (4R) P42593689
 HYALITE TS LASS 853 (853) P42893790



INNISFAIL WHR X651723 4013 ET (1F4013) P43541960
C REAL DEAL 0137 ET (137) P44122963
 C C1C 89T MISS MILES 4264 ET (4264) P43487278

NJW LONG HAUL 36E ET (11B36E) P43829326
GENOA MS 36E LONG HAUL 20061ET (0061) P44131238
 GENOA MISS U208 FOREMOST 14048 (14048) P43478734

EFBEEF TFL U208 TESTED X651 ET (PEFX651) P43891736
 INNISFAIL P230 T723 (1F723) P42843247
 C MILES MCKEE 2103 ET (2103) 43270668
 TH 16G 20N GEMINI 89T (TH89T) P42779363

CHURCHILL SENSATION 028X (028) 43092364
 NJW 79Z 10W RITA 11B (79Z11B) P43483038
 EFBEEF FOREMOST U208 (PEFU208) P42896690
 GENOA MISS KCF N114 11059 (11059) P43174328



NJW 79Z Z311 ENDURE 173D ET (79Z173D) P43722088
LOEWEN GENESIS G16 ET (G16) P43987463
 LOEWEN 77 48 MISS 344N 4RB42ET (B42) P43461646

NJW 135U 10Y HOMETOWN 27A (135U27A) P43385145
GENOA MISS 27AHOMETOWN 19090ET (9090) P44012565
 R&R 6378 LEANNE 6003 8003 (8003) P42928365

KCF BENNETT ENCORE Z311 ET (Z311) P43387256
 BW 91H 100W RITA 79Z ET (91H79Z) P43311375
 MSU TCF REVOLUTION 4R (4R) P42593689
 PCR JACKLYN NIKOLE 344N (PCR344N) P42408229

NJW 73S W18 HOMETOWN 10Y ET (73S10Y) P43214853
 NJW 4037 34S DURANGO VACA 135U (34S135U) P42892084
 R&R PRIME CUT 6378 ET (6378) P42763764
 R&R SILVEIRAS LILY LEANNE 6003ET (6003) P42763766

[Lot 27] GENOA 0708 FLASH 23099

Reg.: 44455554 | Calved: 03/07/2023 | Tattoo: 3099 | Polled

CE	BW	WW	YW	DMI	SC	SCF	MM	M&G	MCE
6.8	-0.7	62	96	0.3	1.8	24.7	44	75	3.1

MCW	UDDR	TEAT	CW	FAT	REA	MARB	\$BMI	\$BII	\$CHB
69	1.40	1.50	56	0.052	0.37	0.11	458	543	94



- A modest birth weight Flash son that is short marked, really athletic and posted a great weaning ratio.
- His dam, 5034, is raising her 8th consecutive AI calf and we have 4 maternal sisters retained in the cow herd. This cow family has impeccable udder quality, excellent milk flow and weans nice big soggy calves.
- RATIOS: BW 97%, WW 112%, YW 100%
- EPDS: 1% MILK, M> Top 5% BW, SC, SCF, TEAT; Top 10% MCW, UDDER, BMI\$, Top 20% WW

[Lot 28] GENOA 0137 REAL DEAL 23101

Reg.: 44455613 | Calved: 03/07/2023 | Tattoo: 3101 | Polled

CE	BW	WW	YW	DMI	SC	SCF	MM	M&G	MCE
5.3	4.1	77	125	0.8	1.6	17.8	35	74	3.8

MCW	UDDR	TEAT	CW	FAT	REA	MARB	\$BMI	\$BII	\$CHB
118	1.30	1.20	67	0.002	0.55	0.18	376	473	117



- Big time growth figures posted by this Real Deal son.
- WW and YW Ratios at the top of the 2023 roster, and EPDs match as well in the top 1% of the breed.
- 3101 expresses length and depth of body, while being long from hooks to pins, soft in his flank, clean shoulders and red necked.
- RATIOS: WW 118%, YW 111%, REA 101%, MARB 140%
- EPDS: 1% WW, YW; Top 5% M> Top 10% SC, MILK; Top 15% FAT; Top 20% MCE; Top 25% UDDER

[Lot 29] GENOA G16 GENESIS 23105 ET

Reg.: 44455458 | Calved: 03/08/2023 | Tattoo: 3105 | Polled

CE	BW	WW	YW	DMI	SC	SCF	MM	M&G	MCE
9.5	2.3	62	102	0.4	1.2	17.5	32	63	8.5

MCW	UDDR	TEAT	CW	FAT	REA	MARB	\$BMI	\$BII	\$CHB
92	1.30	1.20	90	0.072	0.44	0.39	400	499	164



- Flush brother to Lots 6, 19 & 23.
- Same great quality in this flush brother out of Genesis x 9090, but with a splash more white and touch more moderate in his frame.
- Strong set of balanced EPDs, with an emphasis on carcass quality. That includes carcass weight, MARB, and CHB\$ in the top 5%
- RATIOS: FAT 77%
- EPDS: Top 5% MCE, CW, MARB, CHB\$; Top 10% CED; Top 20% YW, MILK, M> Top 25% WW, UDDER

[Lot 30] GENOA 19091 BELLE AIR 23110

Reg.: 44455507 | Calved: 03/09/2023 | Tattoo: 3110 | Polled

CE	BW	WW	YW	DMI	SC	SCF	MM	M&G	MCE
0.9	2.3	67	106	0.4	2.0	28.7	36	69	-1.0

MCW	UDDR	TEAT	CW	FAT	REA	MARB	\$BMI	\$BII	\$CHB
100	1.60	1.70	72	0.102	0.43	0.61	560	686	158



- 9091 son with a moderate frame that has an expressive muscle pattern, depth of body, big ribbed and short marked.
- An EPD profile that includes 6 traits in the top 1% of the breed, including top notch udder quality, sustain cow fertility, scrotal and MARB.
- RATIOS: BW 100%, SC 100%, REA 100%, MARB 141%
- EPDS: Top 1% SC, SCF, UDDER, TEAT, MARB, BMI\$; Top 5% M&G, CHBS; Top 10% MILK; Top 15% WW, YW



BR BELLE AIR 6011 (6011) 43724674
 GENOA 6011 BELLE AIR 19091 (9091) P44011891
 GENOA MISS HOMETOWN 10Y 15047 (15047) P43585109

BAR S LHF 028 240 (240) 43287538
 BR BELLE 4082 ET (4082) 43514206
 NJW 73S W18 HOMETOWN 10Y ET (73S10Y) P43214853
 HYALITE TS LASS 547 (547) P42564481

HH ADVANCE 5044C ET (5044) 43578992
 GENOA MS 5044C ADVANCE 19134ET (9134) 44011846
 GENOA MISS DOMINO 3027 11067 (11067) 43174305

CL 1 DOMINO 215Z (215) 43268907
 HH MISS ADVANCE 1072Y ET (1072) 43173106
 UPS DOMINO 3027 (3027) 42426386
 R MISS ADVANCE 3318 (3318) 42914021

[Lot 31] GENOA 128J KINGDOM 23117

Reg.: 44455597 | Calved: 03/12/2023 | Tattoo: 3117 | Polled

CE	BW	WW	YW	DMI	SC	SCF	MM	M&G	MCE
7.6	1.7	60	92	0.4	1.7	20.3	25	55	9.8

MCW	UDDR	TEAT	CW	FAT	REA	MARB	\$BMI	\$BII	\$CHB
88	1.50	1.50	79	0.032	0.72	0.27	429	517	140



- Another dark red, well-marked grandson of the donor 8003. There is a lot of quality in this long-spined, stout featured, large and dark red testicled bull.
- 3117 is easy to like when put into motion with foot quality and size. Lots of great maternal attributes to offer, coupled with top notch carcass quality.
- RATIOS: FAT 64%, REA 102%
- EPDS: Top 1% MCE; Top 5% SC, UDDER, TEAT; Top 10% REA; Top 15% SCF, MARB, BMI\$; Top 20% CED, CHBS; Top 25% BW



DM ALL AROUND 904G ET (904) P44015527
 CHURCHILL KINGDOM 128J ET (128) P44267937
 BR VALIDATED B413 6035 7098 (7098) P43857421

LCX PERFECTO 11B ET (LCX 11B) P43517583
 DM LI DOMINETTE 301 ET (301) P43778209
 EFBEF BR VALIDATED B413 (PEFB413) P43558667
 BR BENNETT 4R Y428 2101 6035 (6035) P43631993

SNOWSHOE X51 BANNACK Y27 19C (SNO19C) P43573757
 GENOA MS 19C BANNACK 20146 ET (0146) P44187117
 R&R 6378 LEANNE 6003 8003 (8003) P42928365

KCF BENNETT REVOLUTION X51 (X51) P43081556
 SNOWSHOE 719T KATIE Y27 (SNOY27) P43224358
 R&R PRIME CUT 6378 ET (6378) P42763764
 R&R SILVEIRAS LILY LEANNE 6003ET (6003) P42763766

[Lot 32] GENOA 81E HISTORIC 23120

Reg.: 44455579 | Calved: 03/18/2023 | Tattoo: 3120 | scurred

CE	BW	WW	YW	DMI	SC	SCF	MM	M&G	MCE
1.3	2.6	64	105	0.2	1.0	18.7	38	70	-0.6

MCW	UDDR	TEAT	CW	FAT	REA	MARB	\$BMI	\$BII	\$CHB
119	1.30	1.30	87	0.012	0.97	0.05	423	497	142



- A really nice medium framed Historic sired bull that is short marked, smoothly put together with plenty of length and a lot of maternal attributes top and bottom side of his pedigree.
- 3120, out of a very productive Hutton daughter, started out with a modest birthweight and weaned with a 104% WW ratio.
- RATIOS: BW 96%, WW 104%, YW 100%, FAT 86%
- EPDS: 1% REA; Top 5% MILK, M> Top 10% CW; Top 15% YW; Top 20% WW, BMI\$, CHBS; Top 25% UDDER



CHURCHILL SENSATION 028X (028) 43092364
 NJW 160B 028X HISTORIC 81E ET (160B81E) P43829334
 NJW 73S 38W DAYDREAM 160B (73S160B) P43483177

UPS DOMINO 3027 (3027) 42426386
 CHURCHILL LADY 7202T ET (7202) 42856776
 NJW 76S P20 BEEF 38W ET (76S38W) P43002917
 NJW P606 72N DAYDREAM 73S (72N73S) P42693956

NJW 73S 980 HUTTON 109Z ET (73S109Z) 43311893
 GENOA MISS 109Z HUTTON 18133 (8133) 43893606
 GENOA MISS CH A1 15067 (15067) 43585190

CRR HELTON 980 (980) P43032013
 NJW P606 72N DAYDREAM 73S (72N73S) P42693956
 CHURCHILL A1 ET (2228) 43352233
 GENOA DOMINETTE 10028 (10028) 43119155



BR BELLE AIR 6011 (6011) 43724674
GENOA 6011 BELLE AIR 19091 (9091) P44011891
 GENOA MISS HOMETOWN 10Y 15047 (15047) P43585109

CL 1 DOMINO 710E 1ET (710) 43800218
GENOA MISS 710E DOMINO 20036 (0036) 44131269
 GENOA MS 028X SENSATION 16038 (6038) 43682188

BAR S LHF 028 240 (240) 43287538
 BR BELLE 4082 ET (4082) 43514206
 NJW 73S W18 HOMETOWN 10Y ET (73S10Y) P43214853
 HYALITE TS LASS 547 (547) P42564481

CL 1 DOMINO 215Z (215) 43268007
 HH MISS ADVANCE 9119W (9119) 42999396
 CHURCHILL SENSATION 028X (028) 43092364
 GENOA ROSETTA 11029 ET (11029) 43174231

[Lot 33] GENOA 9091 BELLE AIR 23123

Reg: 44455590 | Calved: 03/21/2023 | Tattoo: 3123 | Horned

CE	BW	WW	YW	DMI	SC	SCF	MM	M&G	MCE
-2.2	3.8	67	115	0.7	2.8	26.0	37	71	-1.5

MCW	UDDR	TEAT	CW	FAT	REA	MARB	\$BMI	\$BII	\$CHB
126	1.40	1.40	74	0.072	0.08	0.45	503	618	140



- Impressive son of the CHB sire 9091.
- 3123 is balanced on the profile with added phenotype and breed leading marbling.
- He is balanced, deep and wide, with a level hip, good leg set, powerful stifle, large scrotal and is clean fronted.
- Dam is a really attractive 710E daughter with a nice udder.
- RATIOS: WW 111%, YW 107%, SC 113%, IMF 134%
- EPDS: Top 1% SC, SCF; Top 5% YW, MILK, M&G, MARB, BMIS; Top 10% WW, UDDER, TEAT; Top 15% CHBS



INNISFAIL WHR X651/723 4013 ET (IF4013) P43541960
C REAL DEAL 0137 ET (137) P44122963
 C C/C 89T MISS MILES 4264 ET (4264) P43487278

CHURCHILL SENSATION 028X (028) 43092364
GENOA MS 028X SENSATION 16059 (6059) 43682596
 GENOA MISS NEON 12148 (12148) 43282543

EFBEEF TFL U208 TESTED X651 ET (PEFX651) P43091736
 INNISFAIL P230 1723 (IF1723) P42843247
 C MILES MCKEE 2103 ET (2103) 43270668
 TH 16G 20N GEMINI 89T (TH89T) P42779363

UPS DOMINO 3027 (3027) 42426386
 CHURCHILL LADY 7202 ET (7202) 42856776
 GH NEON 17N (HMK 17N) 42554149
 R MISS ADVANCE 3598 (3598) 42914050

[Lot 34] GENOA 0137 REAL DEAL 23124

Reg: 44455477 | Calved: 03/21/2023 | Tattoo: 3124 | scurred

CE	BW	WW	YW	DMI	SC	SCF	MM	M&G	MCE
7.3	2.2	60	89	0.4	0.5	18.7	25	56	3.6

MCW	UDDR	TEAT	CW	FAT	REA	MARB	\$BMI	\$BII	\$CHB
63	1.40	1.40	79	0.062	0.40	0.19	389	474	126



- This bull has a lot of pigment on his head and face but just missed his mark.
- He is long fronted and visually attractive from the side profile; more than adequate in terms of rib, considering his overall length.
- He is moderate in his frame and useful in his kind.
- Out of a really nice Sensation bred cow.
- RATIOS: BW 92%, WW 106%, YW 105%
- EPDS: Top 10% MCW; Top 15% TEAT; Top 20% CED, MCE, CW; Top 25% UDDER, MARB



EFBEEF RESOLUTE CEO (PEFC609) P43591829
H WMS THOMAS COUNTY 1443 ET (1443) P44257454
 H MS EXCEL 7945 ET (7945) P43857538

NJW 73S W18 HOMETOWN 10Y ET (73S10Y) P43214853
GENOA MISS HOMETOWN 10Y 15047 (15047) P43585109
 HYALITE TS LASS 547 (547) P42564481

KCF BENNETT REVOLUTION X51 (X51) P43081556
 EFBEEF 6378 KATE W484 (PEFW484) P43032139
 BEHM 100W CUD4 504C (BEHM504C) P43636764
 H MS 824 EXCEL 4146 ET (4146) P43482081

SHF WONDER M326 W18 ET (W18) P42991698
 NJW P666 72N DAYDREAM 73S (72N73S) P42693956
 KT TOP SECRET 1030 (1030) P42205594
 HYALITE 233 LASS 205 (205) P42268115

[Lot 35] GENOA THOMAS COUNTY 23129 ET

Reg: 44455522 | Calved: 03/23/2023 | Tattoo: 3129 | Polled

CE	BW	WW	YW	DMI	SC	SCF	MM	M&G	MCE
-2.5	3.5	73	120	0.9	1.9	20.4	37	73	-4.8

MCW	UDDR	TEAT	CW	FAT	REA	MARB	\$BMI	\$BII	\$CHB
100	1.40	1.30	85	0.052	0.61	0.46	438	552	157



- Massive, deep bodied, soft flanked, extra soggy, big boned, good footed — just a true beef bull.
- 3129 takes after his dam 5047, in that he is super easy fleshing, easy going, with a ton of width at the ground and over his top.
- Checks a lot of boxes both visually and numerically. 6 traits and the CHBS index in the top 5% of the breed.
- RATIOS: FAT 83%, REA 105%, MARB 107%
- EPDS: Top 5% WW, YW, SC, MILK, M&G, MARB, CHBS; Top 10% UDDER, CW, BMIS; Top 15% SCF; Top 20% REA

[Lot 36] GENOA 0137 REAL DEAL 23135

Reg.: 44455558 | Calved: 03/26/2023 | Tattoo: 3135 | Polled

CE	BW	WW	YW	DMI	SC	SCF	MM	M&G	MCE
11.9	1.6	57	78	0.2	1.0	20.1	26	55	5.6

MCW	UDDR	TEAT	CW	FAT	REA	MARB	\$BMI	\$BII	\$CHB
45	1.50	1.60	51	0.022	0.28	0.25	386	472	100



- Heifer bull prospect out of a 7 year old 88X daughter.
- 3135 is a sure shot calving ease bull with both CED and MCE in the top 10% of the breed. He has do-ability and predictability and is a deep sided, smooth made package.
- Dam had her 6th AI calf this spring on a calving interval of 371 days.
- RATIOS: BW 95%, WW 101%, REA 101%, IMF 104%
- EPDS: Top 1% TEAT; Top 5% CED, MCW, UDDR; Top 10% MCE; Top 15% MARB; Top 20% SCF; Top 25% BW



INNISFAIL WHR X651/723 4013 ET (IF4013) P43541960
C REAL DEAL 0137 ET (137) P44122963
 C CJC 89T MISS MILES 4264 ET (4264) P43487278

EFBEEF TFL U208 TESTED X651 ET (PEFX651) P43091736
 INNISFAIL P230 T723 (IF723) P42843247
 C MILES MCKEE 2103 ET (2103) 43270668
 TH 16G 20N GEMINI 89T (TH89T) P42779363

NJW 98S R117 RIBEYE 88X ET (98S88X) 43094146
GENOA MISS RIBEYE 88X 17112 (7112) 43783124
 GENOA MISS 0945 DOMINO 15060 (15060) 43585172

SHF RIB EYE M326 R117 (R117) P42584003
 NJW 9126T DEW DOMINO 98S (5M98S) P42693893
 LJS MARK DOMINO 0945 (0945) 43000470
 GENOA MISS DOMINO 3027 11067 (11067) 43174405

[Lot 37] GENOA 0708 FLASH 23136 ET

Reg.: 44455525 | Calved: 03/27/2023 | Tattoo: 3136 | Polled

CE	BW	WW	YW	DMI	SC	SCF	MM	M&G	MCE
-1.3	1.9	63	101	0.5	1.8	21.1	40	72	-3.2

MCW	UDDR	TEAT	CW	FAT	REA	MARB	\$BMI	\$BII	\$CHB
89	1.50	1.50	78	0.062	0.47	0.38	441	542	143



- Flush brothers sell as Lots 39, 40 & 44.
- Top ratio bull for IMF in the sale.
- This bull has probably shaped up more than any bull in the pen since picture day in mid-June.
- An easy going, nicely put together bull that is level over his top and back through his hip, soft middle and clean through shoulders and has an attractive head.
- He is out of the 5047 cow that has stood the test of time and is still the matriarch in the donor line up.
- A maternal brother to the herd bull Belle Air 19091, owned with 5J's.
- RATIOS: IMF 147%
- EPDS: Top 5% SC, MILK, M&G, UDDR, TEAT; Top 10% MARB, BMI\$, CHBS; Top 15% SCF; Top 20% WW, YW, CW



TH FRONTIER 174E (174E) P43818822
H FLASH 0708 ET (0708) P44233202
 ABC MS 100W BLAZE 4015 (4015) 43538605

TH 403A 475Z PIONEER 358C ET (358C) P43596960
 FTF TRUSTING LADY 312A (312) P43383673
 NJW 73S M326 TRUST 100W ET (73S100W) P43002897
 ABC MS 4084 BLAZE 8047 (8047) 42944092

NJW 73S W18 HOMETOWN 10Y ET (73S10Y) P43214853
GENOA MISS HOMETOWN 10Y 15047 (15047) P43585109
 HYALITE TS LASS 547 (547) P42564481

SHF WONDER M326 W18 ET (W18) P42991698
 NJW P606 72N DAYDREAM 73S (72N73S) P42693956
 KT TOP SECRET 1030 (1030) P42205594
 HYALITE 233 LASS 205 (205) P42268115

[Lot 38] GENOA 9091 BELLE AIR 23137

Reg.: 44502537 | Calved: 03/28/2023 | Tattoo: 3137 | Horned

CE	BW	WW	YW	DMI	SC	SCF	MM	M&G	MCE
1.7	3.9	63	106	0.6	1.8	18.3	28	59	0.8

MCW	UDDR	TEAT	CW	FAT	REA	MARB	\$BMI	\$BII	\$CHB
87	1.40	1.30	83	0.052	0.65	0.46	410	513	162



- 23137 is dark red, conservatively marked, with a balanced look.
- He is deep bodied, comfortable on the move, big footed and soft made with extra muscle shape.
- Ratioed 126% for Marb.
- RATIOS: FAT 91%, IMF 126%
- EPDS: Top 5% SC, MARB, CHBS; Top 10% UDDR; Top 15% YW, CW, REA; Top 20% BMI\$; Top 25% WW



BR BELLE AIR 6011 (6011) 43724674
GENOA 6011 BELLE AIR 19091 (0901) P44011891
 GENOA MISS HOMETOWN 10Y 15047 (15047) P43585109

BAR S LHF 028 240 (240) 43287538
 BR BELLE 4082 ET (4082) 43514206
 NJW 73S W18 HOMETOWN 10Y ET (73S10Y) P43214853
 HYALITE TS LASS 547 (547) P42564481

LJS MARK DOMINO 0945 (0945) 43000470
GENOA MISS 0945 DOMINO 16083 (6083) 43682620
 GENOA L1 DOMINETTE 09037 (09037) 43043088

LJS MARK DOMINO 0709 (0709) 42810003
 LJS MS ADVANCE 0601 (0601) 42705829
 L1 DOMINO 02398 (02398) 42266964
 L1 DOMINETTE 0610 (0610) 42892936

[LOT 39] GENOA 0708 FLASH 23138 ET

Reg.: 44455526 | Calved: 03/28/2023 | Tattoo: 3138 | Horned



- This one has had us excited as soon as he hit the ground.
- 3138 is a unique herd sire prospect when you evaluate his pedigree, phenotype, and data that checks a lot of boxes.
- You will be hard pressed to find a bull this stout and with game changing performance. He is dark red, short-marked, with goggle eyes and CHB\$ in the top 5% of the breed.
- His pedigree is straight polled with three shots of NJW 73S.
- He is also out of the 5047 donor which is still youthful at nine years old and out produces herself with every consecutive calf crop.
- We will use 3138 via AI heavily on L1 based cows in 2025.
- RATIOS: REA 111%, IMF 104%
- EPDS: Top 1% MILK, M> Top 5% SC, CHB\$; Top 10% WW, YW CW, REA, MARB, BMI\$; Top 20% SCF; Top 25% UDDER

CE	BW	WW	YW	DMI	SC	SCF	MM	M&G	MCE
-3.9	2.7	67	110	0.5	1.8	19.6	41	75	-3.0

MCW	UDDR	TEAT	CW	FAT	REA	MARB	\$BMI	\$BII	\$CHB
104	1.30	1.30	84	0.032	0.73	0.31	434	530	153



TH FRONTIER 174E (174E) P43818822
H FLASH 0708 ET (0708) P44233202
 ABC MS 100W BLAZE 4015 (4015) 43538605

TH 403A 475Z PIONEER 358C ET (358C) P43596960
 FTF TRUSTING LADY 312A (312) P43383673
 NJW 73S M326 TRUST 100W ET (73S100W) P43002897
 ABC MS 4084 BLAZE 8047 (8047) 42944092

NJW 73S W18 HOMETOWN 10Y ET (73S10Y) P43214853
GENOA MISS HOMETOWN 10Y 15047 (15047) P43585109
 HYALITE TS LASS 547 (547) P42564481

SHF WONDER M326 W18 ET (W18) P42991698
 NJW P606 72N DAYDREAM 73S (72N73S) P42693956
 KT TOP SECRET 1030 (1030) P42205594
 HYALITE 233 LASS 205 (205) P42268115

[LOT 40] GENOA 0708 FLASH 23141 ET

Reg.: 44455529 | Calved: 04/04/2023 | Tattoo: 3141 | Polled



- Flush brother to Lot 39.
- This bull is equally exciting with the same herd bull presence as the Lot 39 bull but in polled package.
- He shows a lot of the same phenotypic characteristics and his EPDs are almost identical to 3138, with a shot more CED and low BW EPD.
- 3141 is massive made, bold through his ribcage, exceptionally long bodied, square hipped, athletic on an excellent foot, deep eye set and has large testicles.
- 3141 will also be used heavily in our AI program in the spring of 2025.
- EPDS: Top 5% SC, MILK, M&G, Top 10% BMI\$; Top 15% WW, YW, SCF, MARB; Top 20% CHB\$; Top 25% BW

CE	BW	WW	YW	DMI	SC	SCF	MM	M&G	MCE
2.3	1.6	65	107	0.5	1.8	20.7	40	73	-2.0

MCW	UDDR	TEAT	CW	FAT	REA	MARB	\$BMI	\$BII	\$CHB
97	1.30	1.20	71	0.052	0.45	0.29	426	523	131



TH FRONTIER 174E (174E) P43818822
H FLASH 0708 ET (0708) P44233202
 ABC MS 100W BLAZE 4015 (4015) 43538605

TH 403A 475Z PIONEER 358C ET (358C) P43596960
 FTF TRUSTING LADY 312A (312) P43383673
 NJW 73S M326 TRUST 100W ET (73S100W) P43002897
 ABC MS 4084 BLAZE 8047 (8047) 42944092

NJW 73S W18 HOMETOWN 10Y ET (73S10Y) P43214853
GENOA MISS HOMETOWN 10Y 15047 (15047) P43585109
 HYALITE TS LASS 547 (547) P42564481

SHF WONDER M326 W18 ET (W18) P42991698
 NJW P606 72N DAYDREAM 73S (72N73S) P42693956
 KT TOP SECRET 1030 (1030) P42205594
 HYALITE 233 LASS 205 (205) P42268115



[Lot 41] GENOA 128J KINGDOM 23142 ET

Reg: 44455530 | Calved: 03/30/2023 | Tattoo: 3142 | Polled

CE	BW	WW	YW	DMI	SC	SCF	MM	M&G	MCE
3.3	1.8	66	99	0.6	1.2	23.6	42	75	3.9

MCW	UDDR	TEAT	CW	FAT	REA	MARB	\$BMI	\$BII	\$CHB
79	1.40	1.40	84	0.052	0.68	0.45	488	596	155



DM ALL AROUND 904G ET (904) P44015527
 CHURCHILL KINGDOM 128J ET (128) P44267937
 BR VALIDATED B413 6035 7098 (7098) P43857421

NJW 73S W18 HOMETOWN 10Y ET (73S10Y) P43214853
 GENOA MISS HOMETOWN 10Y 15047 (15047) P43585109
 HYALITE TS LASS 547 (547) P42564481

LCX PERFECTO 11B ET (LCX 11B) P43517583
 DM LI DOMINETTE 301 ET (301) P43778209
 EFBEEF BR VALIDATED B413 (PEFB413) P43558667
 BR BENNETT 4R Y428 2101 6035 (6035) P43631993

SHF WONDER M326 W18 ET (W18) P42991698
 NJW P606 72N DAYDREAM 73S (72N73S) P42693956
 KT TOP SECRET 1030 (1030) P42205594
 HYALITE 233 LASS 205 (205) P42268115

- Flush brother to Lots 42, 43 & 46.
- A Kingdom son out of the 5047 donor, that is made good through his front one third, extra length of body and great on the move.
- Not a hole is his EPD profile with a balance of maternal traits and top end carcass traits.
- 13 traits in top 25% of the breed with both BMI and CHB dollar indexes in the top 5% of the breed.
- RATIOS: FAT 95%, REA 107%, IMF 119%
- EPDS: Top 1% MILK; Top 5% SCF, M&G, MARB, BMI\$, CHB\$, Top 10% UDDR, TEAT; Top 15% CW, REA; Top 20% WW, MCE; Top 25% BW, SC, MCW

[LOT 42] GENOA 128J KINGDOM 23144 ET

Reg.: 44455531 | Calved: 03/30/2023 | Tattoo: 3144 | Polled



- Flush brother to Lots 41, 43 & 46.
- This masculine herd bull prospect combines his muscle, length and, depth of body with an attractive look that hit his stride and posted an impressive YW.
- 3144 has a clean sheath, large testicles, stout square level hip and is short marked.
- We have three beautiful flush sisters that show the promise of making the ideal kind of brood cows.
- RATIOS: REA 100%, IMF 118%
- EPDS: Top 1% SC; Top 5% MILK, M&G, BMI\$; Top 10% WW, YW, SCF, UDDER, TEAT, CW, MARB, CHB\$; Top 20% REA

CE	BW	WW	YW	DMI	SC	SCF	MM	M&G	MCE
3.0	2.9	70	109	0.6	2.0	22.6	39	74	2.8

MCW	UDDR	TEAT	CW	FAT	REA	MARB	\$BMI	\$BII	\$CHB
101	1.40	1.40	85	0.072	0.62	0.37	471	578	150



DM ALL AROUND 904G ET (904) P44015527
 CHURCHILL KINGDOM 128J ET (128) P44267937
 BR VALIDATED B413 6035 7098 (7098) P43857421

LCX PERFECTO 11B ET (LCX 11B) P43517583
 DM L1 DOMINETTE 301 ET (301) P43778209
 EFBEEF BR VALIDATED B413 (PEFB413) P43558667
 BR BENNETT 4R Y428 2101 6035 (6035) P43631993

NJW 73S W18 HOMETOWN 10Y ET (73S10Y) P43214853
 GENOA MISS HOMETOWN 10Y 15047 (15047) P43585109
 HYALITE TS LASS 547 (547) P42564481

SHF WONDER M326 W18 ET (W18) P42991698
 NJW P606 72N DAYDREAM 73S (72N73S) P42693956
 KT TOP SECRET 1030 (1030) P42205594
 HYALITE 233 LASS 205 (205) P42268115



DM ALL AROUND 904G ET (904) P44015527
 CHURCHILL KINGDOM 128J ET (128) P44267937
 BR VALIDATED B413 6035 7098 (7098) P43857421

NJW 73S W18 HOMETOWN 10Y ET (73S10Y) P43214853
 GENOA MISS HOMETOWN 10Y 15047 (15047) P43585109
 HYALITE TS LASS 547 (547) P42564481

LCX PERFECTO 11B ET (LCX 11B) P43517583
 DM LI DOMINETTE 301 ET (301) P43778209
 EFBEF BR VALIDATED B413 (PEFB413) P43558667
 BR BENNETT 4R Y428 2101 6035 (6035) P43631993

SHF WONDER M326 W18 ET (W18) P42991698
 NJW P606 72N DAYDREAM 73S (72N73S) P42693956
 KT TOP SECRET 1030 (1030) P42205594
 HYALITE 233 LASS 205 (205) P42268115



TH FRONTIER 174E (174E) P43818822
 H FLASH 0708 ET (0708) P44233202
 ABC MIS 100W BLAZE 4015 (4015) 43538605

NJW 73S W18 HOMETOWN 10Y ET (73S10Y) P43214853
 GENOA MISS HOMETOWN 10Y 15047 (15047) P43585109
 HYALITE TS LASS 547 (547) P42564481

TH 403A 475Z PIONEER 358C ET (358C) P43596960
 FTF TRUSTING LADY 312A (312) P43383673
 NJW 73S M326 TRUST 100W ET (73S100W) P43002897
 ABC MIS 4084 BLAZE 8047 (8047) 42944092

SHF WONDER M326 W18 ET (W18) P42991698
 NJW P606 72N DAYDREAM 73S (72N73S) P42693956
 KT TOP SECRET 1030 (1030) P42205594
 HYALITE 233 LASS 205 (205) P42268115



DM ALL AROUND 904G ET (904) P44015527
 CHURCHILL KINGDOM 128J ET (128) P44267937
 BR VALIDATED B413 6035 7098 (7098) P43857421

NJW 73S W18 HOMETOWN 10Y ET (73S10Y) P43214853
 GENOA MISS 10Y HOMETOWN 16085 (6085) P43682622
 GENOA MISS U38 VISION 13077 (13077) P43376795

LCX PERFECTO 11B ET (LCX 11B) P43517583
 DM LI DOMINETTE 301 ET (301) P43778209
 EFBEF BR VALIDATED B413 (PEFB413) P43558667
 BR BENNETT 4R Y428 2101 6035 (6035) P43631993

SHF WONDER M326 W18 ET (W18) P42991698
 NJW P606 72N DAYDREAM 73S (72N73S) P42693956
 SHF VISION R117 U38 (U38) P42894861
 GENOA MISS PUCKSTER 10116 (10116) P43119198

[Lot 43] GENOA 128J KINGDOM 23148 ET

Reg.: 44455533 | Calved: 03/31/2023 | Tattoo: 3148 | Polled

CE	BW	WW	YW	DMI	SC	SCF	MM	M&G	MCE
2.4	1.6	66	104	0.6	1.9	2.44	38	70	2.9

MCW	UDDR	TEAT	CW	FAT	REA	MARB	\$BMI	\$BII	\$CHB
96	1.50	1.50	94	0.062	0.67	0.52	515	629	178



- Flush brother to Lots 41, 42 & 46.
- A higher performing Kingdom son with all of the bells and whistles from udder quality to CHB.
- This is a long pattern bull that has true muscle shape and volume. He is good boned and strides out well on the move.
- EPDS: Top 1% UDDER; Top 5% SC, SCF, MILK, M&G, TEAT, CW, MARB, BMIS, CHBS; Top 15% REA; Top 20%
- WW, YW; Top 25% BW

[Lot 44] GENOA 0708 FLASH 23151 ET

Reg.: 44455535 | Calved: 04/02/2023 | Tattoo: 3151 | Polled

CE	BW	WW	YW	DMI	SC	SCF	MM	M&G	MCE
1.0	2.6	61	95	0.5	1.4	18.9	39	70	-5.5

MCW	UDDR	TEAT	CW	FAT	REA	MARB	\$BMI	\$BII	\$CHB
83	1.40	1.40	78	0.042	0.72	0.21	404	488	130



- Flush brother to Lots 37, 39 & 40.
- Super complete and soft made Flash son that is more moderate in his frame but has as much width and dimension as any bull in the pen.
- Goggle-eyed, with a massive center, good bone, smooth joints, expressive top line and athletic on the move.
- He will moderate a set of bigger framed cows while adding milk flow. Sounds like a winning combination if you are in the position to retain females.
- RATIOS: FAT 83%
- EPDS: Top 1% MILK, M-> Top 10% UDDER, TEAT, REA; Top 15% SC; Top 20% CW; Top 25% WW, SCF MARB, CHBS

[Lot 45] GENOA 128J KINGDOM 23154

Reg.: 44455497 | Calved: 04/05/2023 | Tattoo: 3154 | Polled

CE	BW	WW	YW	DMI	SC	SCF	MM	M&G	MCE
9.4	1.0	56	84	0.8	1.8	17.2	32	60	5.6

MCW	UDDR	TEAT	CW	FAT	REA	MARB	\$BMI	\$BII	\$CHB
77	1.40	1.50	90	0.022	0.81	0.28	386	468	147



- Spot faced bull that could compliment a set of black replacement heifers.
- We absolutely love finding his dam out in the pasture in the summertime. She will be one of the first cows to slick off in the spring and at 8 years old she still has an udder that is level and square with small teats.
- 3154 is a well-made, good structured and smooth shouldered bull that profiles with a level top, supports a large scrotal circumference and ratioed 115% for REA.
- RATIOS: BW 92%, WW 109%, YW 104%, FAT 80%, REA 115%
- EPDS: Top 5% SC, TEAT, CW, REA; Top 10% CED, MCE, UDDER, CHBS; Top 15% BW, MILK, MARB; Top 20%
- MCW; Top 25% M&G, BMIS

[Lot 46] GENOA 128J KINGDOM 23159 ET

Reg.: 44455538 | Calved: 04/08/2023 | Tattoo: 3159 | Polled

CE	BW	WW	YW	DMI	SC	SCF	MM	M&G	MCE
1.8	3.0	70	108	0.6	1.8	23.1	39	74	1.3

MCW	UDDR	TEAT	CW	FAT	REA	MARB	\$BMI	\$BII	\$CHB
91	1.50	1.40	89	0.062	0.72	0.46	489	602	165



- Flush brother to Lots 41, 42, 43
- A lot of shape and dimension in this heavy structured Kingdom son.
- 3159 is bold in his rib shape, tight sheathed, level in his hip, easy fleshing, with a good eye set and dark red testicles.
- If you are serious about adding carcass quality while retaining cow quality and longevity, take a look and study these 4 brothers.
- RATIOS: FAT 83%, REA 105%
- EPDS: Top 5% SC, SCF, MILK, M&G, UDDER, MARB, BMI\$, CHBS; Top 10% WW, YW, TEAT, CW, REA



DM ALL AROUND 904G ET (904) P44015527
CHURCHILL KINGDOM 128J ET (128) P44267937
BR VALIDATED B413 6035 7098 (7098) P43857421

NJW 73S W18 HOMETOWN 10Y ET (73S10Y) P43214853
GENOA MISS HOMETOWN 10Y 15047 (15047) P43585109
HYALITE TS LASS 547 (547) P4256481

LCX PERFECTO 11B ET (LCX 11B) P43517583
DM LI DOMINETTE 301 ET (301) P43778209
EFBEEF BR VALIDATED B413 (PEFB413) P43558667
BR BENNETT 4R Y428 2101 6035 (6035) P43631993

SHF WONDER M326 W18 ET (W18) P42991698
NJW P606 72N DAYDREAM 73S (72N73S) P42693956
KT TOP SECRET 1036 (1030) P42205594
HYALITE 233 LASS 205 (205) P42268115

[Lot 47] GENOA 17013 YORK 23165

Reg.: 44455463 | Calved: 04/11/2023 | Tattoo: 3165 | Polled

CE	BW	WW	YW	DMI	SC	SCF	MM	M&G	MCE
12.6	1.2	54	91	0.6	0.8	15.9	25	53	9.2

MCW	UDDR	TEAT	CW	FAT	REA	MARB	\$BMI	\$BII	\$CHB
48	1.20	1.10	79	0.052	0.32	0.27	343	426	134



- Natural calf out of an easy doing, heavy milking 9 year old 3027 daughter.
- Stout and athletic built 7013 son that offers a large birth to yearling spread with mature cow weight EPD in the top 1% of the breed.
- 3165 is a maternal sibling to our resident herd sire Belle Air 9073 as well as many other bulls that have sold towards the top in past bull sales.
- RATIOS: BW 93%, WW 109%, YW 108%, FAT 91%
- EPDS: Top 1% MCE, MCW; Top 5% CED; Top 15% MARB; Top 20% BW, CW; Top 25% CHBS



SHF YORK 19H Y02 (Y02) P43180994
GENOA YORK Y02 17013 (7013) P43781453
GENOA MISS HOMETOWN 10Y 15063 (15063) P43585168

UPS DOMINO 3027 (3027) 42426386
GENOA MISS 3027 DOMINO 14003 (14003) 43478712
GENOA MISS HARLAND 408 12039 (12039) 43282434

MSU MF HUDSON 19H (19H) P41027599
LOEWEN MISS P20 10W (10W) P42968642
NJW 73S W18 HOMETOWN 10Y ET (73S10Y) P43214853
GENOA MISS BENNETT N114 11083 (11083) P43174332

CL 1 DOMINO 9126J IET (9126) 41113279
UPS MISS DIAMOND 1353 (1353) 42181624
CJH HARLAND 408 (408) 42536808
GENOA LI DOMINETTE 09037 (09037) 43043088

[Lot 48] GENOA 17013 YORK 23177

Reg.: 44455484 | Calved: 04/15/2023 | Tattoo: 3177 | Polled

CE	BW	WW	YW	DMI	SC	SCF	MM	M&G	MCE
6.6	3.0	64	95	0.4	1.1	20.9	26	58	-1.7

MCW	UDDR	TEAT	CW	FAT	REA	MARB	\$BMI	\$BII	\$CHB
78	1.50	1.50	91	0.052	0.68	0.20	444	532	147



- A really complete design in this conservative marked, goggle-eyed son of York 7013.
- 3177 is athletic with flawless structure plus extra shape and style combined with a balanced and useful set of EPDs across the board.
- There are three Genoa donor cows right up front in his pedigree: 5063, 1067, and the female producer herself 8003.
- RATIOS: BW 98%, WW 102%, FAT 75%, REA 104%
- EPDS: Top 5% UDDER, TEAT, CW; Top 10% CHBS; Top 15% REA, BMI\$, Top 20% CE, WW, SCF; Top 25% MCW



SHF YORK 19H Y02 (Y02) P43180994
GENOA YORK Y02 17013 (7013) P43781453
GENOA MISS HOMETOWN 10Y 15063 (15063) P43585168

GENOA 10Y HOMETOWN 15050 (15050) P43585214
GENOA MISS 5050 HOMETOWN 18164 (8164) P43892986
GENOA MISS DOMINO 3027 11067 (11067) 43174305

MSU MF HUDSON 19H (19H) P41027599
LOEWEN MISS P20 10W (10W) P42968642
NJW 73S W18 HOMETOWN 10Y ET (73S10Y) P43214853
GENOA MISS BENNETT N114 11083 (11083) P43174332

NJW 73S W18 HOMETOWN 10Y ET (73S10Y) P43214853
R&R 4378 LEANNE 6003 8003 (8003) P42928365
UPS DOMINO 3027 (3027) 42426386
R MISS ADVANCE 3318 (3318) 42914021



SHEF YORK 19H Y02 (Y02) P43180994
GENOA YORK Y02 17013 (7013) P43781453
 GENOA MISS HOMETOWN 10Y 15063 (15063) P43585168

CHURCHILL RED BULL 200Z (200) P43281860
GENOA MISS 200Z RED BULL 17204 (7204) 43837271
 GENOA MISS DOMINO 0945 15137 (5137) 43632604

MSU MF HUDSON 19H (19H) P41027599
 LOEWEN MISS P20 10W (10W) P42968642
 NJW 73S W18 HOMETOWN 10Y ET (73S10Y) P43214853
 GENOA MISS BENNETT N114 11083 (11083) P43174332

CHURCHILL SENSATION 028X (028) 43092364
 CHURCHILL LADY 002X ET (002) P43092365
 LJS MARK DOMINO 0945 (0945) 43000470
 GENOA MISS UPS 3027 12177 (12177) 43349441

[Lot 49] GENOA 17013 YORK 23181

Reg: 44455588 | Calved: 04/16/2023 | Tattoo: 3181 | Polled

CE	BW	WW	YW	DMI	SC	SCF	MM	M&G	MCE
10.6	0.4	61	109	0.7	1.6	20.2	29	60	7.7

MCW	UDDR	TEAT	CW	FAT	REA	MARB	\$BMI	\$BII	\$CHB
74	1.20	1.30	101	0.082	0.91	0.23	442	529	164



- There is a ton of muscle shape and volume in this 7013 son with a very smooth and eye catching appearance.
- He is loaded with quality numerically and phenotypically. He has a touch more frame, still soggy and easy flushing with 100% pigment around his eyes.
- RATIOS: BW 89%, WW 108%, YW 108%
- EPDS: Top 1% CW, REA; Top 5% SC, MCE, CHB\$; Top 10% CE, BW, YW, BMI\$; Top 20% MCW; Top 25% MARB



SHEF YORK 19H Y02 (Y02) P43180994
GENOA YORK Y02 17013 (7013) P43781453
 GENOA MISS HOMETOWN 10Y 15063 (15063) P43585168

NJW 135U 10Y HOMETOWN 27A (135U27A) P43385145
GENOA MISS 27A HOMETOWN 18094 (8094) P43889235
 GENOA MISS 11070 DURANGO 14108 (14108) P43478750

MSU MF HUDSON 19H (19H) P41027599
 LOEWEN MISS P20 10W (10W) P42968642
 NJW 73S W18 HOMETOWN 10Y ET (73S10Y) P43214853
 GENOA MISS BENNETT N114 11083 (11083) P43174332

NJW 73S W18 HOMETOWN 10Y ET (73S10Y) P43214853
 NJW 4037 34S DURANGO VACA 135U (34S135U) P42892084
 GENOA THM DURANGO 11070 (11070) P43174297
 GENOA MISS LEGEND 10222 (10222) P43168034

[Lot 50] GENOA 17013 YORK 23203

Reg: 44466521 | Calved: 04/30/2023 | Tattoo: 3203 | Polled

CE	BW	WW	YW	DMI	SC	SCF	MM	M&G	MCE
1.4	3.4	63	98	0.5	0.8	16.0	20	51	-2.2

MCW	UDDR	TEAT	CW	FAT	REA	MARB	\$BMI	\$BII	\$CHB
105	1.40	1.40	81	0.082	0.36	-0.09	332	400	96



- A low birth, moderate-framed 7013 son, short-marked, red to the ground, excellent muscle and volume, very correct and sound structured.
- Youngest bull in the offering, but the quality of phenotype and performance are exceptional.
- RATIOS: SC 100%, FAT 100%, REA 100%, MARB 100%
- EPDS: Top 5% UDDR; Top 10% TEAT; Top 20% WW, CW; Top 25% YW

GL GENOA
LIVESTOCK
640 Genoa Lane
Minden, NV 89423

14th Annual

BULL SALE

2:30 PM | MONDAY, SEPTEMBER 9, 2024

at the Ranch in Minden, Nevada

THANK YOU!

All of us at Genoa Livestock sincerely thank you for your interest in our Hereford genetics and we look forward to seeing you soon!

Visitors are always welcome

 Visit us on Facebook
@GenoaLivestock

www.genoalivestock.com