

Herefords ROCKIN IN THE SOUTH

SATURDAY, MAY 18, 2024

6 PM CST ■ NUNNELLY, TN

A MUSIC CITY WEEKEND

HOSTED BY

Chapman
LAND & CATTLE





Herefords **ROCKIN' IN THE SOUTH**

SATURDAY, MAY 18, 2024 • 6 P.M. (CST)

2090 OLD AIRPORT RD. // NUNNELLY, TN 37137



Ryan Chapman 615-335-3187
John Thomas Woolfolk 731-345-1585
Corey Ruff 501-889-8700
Bobby Singleton 615-708-1034
chapmanlandandcattle.com

Facebook: ChapmanlandandCattle



Sale Location:

GPS Address: 2090 Old Airport Rd., Nunnely, TN 37137

Schedule of Events:

Saturday Cattle Viewing 3 P.M.
Fish Fry Dinner 5 P.M.
Rockin' In The South Sale 6 P.M.
Country Music and Party Immediately Following Sale.

Online Bidding at:



See, hear and buy live during the auction from your home computer.
For more information, contact Katie Colyer at 208-599-2962.

Trucking: Will be available.

Insurance: Jim Bessler 815-762-2641

Air Travel

Nashville International Airport, approximately 1 hour from the farm
Memphis International Airport, 2 hours and 20 minutes from the farm

Motels — Dickson, TN

Hampton Inn 615-446-1088
Comfort Inn 615-639-0130
Holiday Inn Express 615-446-2781
Westin Nashville 615-248-2800

TERMS & CONDITIONS

Terms: Cash or check unless prior arrangements are made with the owners.

Registration Certificates: Certificates of registration are all in order and will be transferred to the new owner according to instructions given with clerks.

AI Certificates: Any female that is mated to an AI sire, that is not owned by the seller, will not have an AI certificate furnished.

Insurance: Insurance will be available.

EPDs: EPDs are updated weekly by the AHA and we cannot guarantee the EPDs listed in the catalog. The EPDs are current at print time from the Evaluation of the American Hereford Association.

Health: Proper health papers will be available.

Trucking: Trucking will be at cost to buyer to central points. Buyer responsible for pickup from central points.

Bids: The auctioneer in charge will have final say regarding all final bids. We hope everyone can attend, but those who cannot, may mail or call bids to the sale manager or any of the representatives.

Catalog: Statements made from the auction box take precedence over printed material in this catalog.

Buyer needs to make arrangements ahead of sale if cattle need to stay at seller's farm for more than one week.

2024
Herefords
ROCKIN' IN THE SOUTH
A MUSIC CITY WEEKEND



Fellow Herefords Breeders,

It is a pleasure to welcome you to the Nashville, Tennessee area for the inaugural 2024 "Rockin' In The South" sale. We look forward to meeting those of you who will be joining us for this special day.

The "Rockin' In The South" benchmark is to only offer cattle of superior quality genetics, pedigree, and performance. Each program represented strives to present only their best and know the cattle must excel for the new owners to have continued success. All involved have put lots of time into the genetics, marketing, and care of their cattle. We appreciate each participants hard work in making this a successful event.

This is an excellent investment opportunity for programs of all magnitudes. You have a rare and valuable chance to invest in young donor females with the kind of earning potential we are all seeking. This sale offers diverse genetics, phenotypes, and age groups. We are offering an exceptional set of show heifer prospects, proven donor dams, spring and fall calving pairs, and bred heifers. The majority of the cattle selling have GE-EPDs as we know we must use all tools available to document our cattle for the traits that are so important to our bottom line. Don't overlook the valuable embryo packages that could easily produce your next herd sire or donor dam.

We are excited to offer superior genetics sired by or mated to recognized proven and popular breed leading A.I. sires. Huth WF CLF Deluxe, NJW Manifest, NJW Steadfast, NJW Endure, NJW Mighty, NJW Long Range, NJW Trust, NJW Forward, NJW Cowboss, NJW Historic, UPS Entice, JW Merit, UPS Mighty 7850, RST Final Print, Gerber High Time, SHF Ellison E149, ILR Hometown 332A, /S Mandate, R Leader, TH Frontier, C GKB Guardian, Boyd Power Surge, KJ GKB Impact, CMF Gold Rush, BG LCC Perfecto 84F, SHF Houston, C Key West, EFBEEF Validated, Stellpflug Gunsmoke, Spearhead Corps Command, Loewen DCF Defiance and Kool Profit and many more top sires being used across North America.

We value each and every one of you as a customer regardless of the dollar amount spent or the number of cattle purchased. A purchase from a fellow breeder no matter the size of the operation comes with the aspiration that your purchase will be a successful high quality breeding piece for your program for years to come.

As always, we appreciate Ryan Chapman and his family for being our host and thank them for all the extra work involved to do so.

Thank everyone once again for your interest and hope all will enjoy the hospitality and a fun filled weekend in the Music City area.

Respectfully,
 John Thomas Woolfolk

Sale Staff:

Dale Stith, Auctioneer, TN Lic #5782	918-760-1550
Tommy Coley, AHA	815-988-7051
Bobby Singleton	615-708-1034
Tommy Carper	540-336-2737
Lou Ellen Harr	419-685-0549
Locke St. John	615-427-8979
Noah Benedict	217-372-8008
Robert Brooks	423-307-9149

Online Bidding at:



See, hear and buy live during the auction from your home computer. For more information, contact Katie Colyer at 208-599-2962.

Acknowledgements:

- Lou Ellen Harr and Jim Coley, AHA Directors
- Sally Wingler, President of the American Hereford Women
- Wesley Klipfel, Cottage Farm Genetics
- Martin Sanders, Vet
- Green River Embryo Services
- Lane Coulter, Tennessee Wildlife Services



Lot 1 – UPS Miss Mighty 9090

1
Cow

UPS MISS MIGHTY 9090 {DLF,HYF,IEF,MSUDF,MDF}

P44045505 Calved: **3/30/19** Tattoo: **BE 9090**

NJW 67U 28M BIG MAX 22Z {DLF,HYF,IEF,MDF}
NJW 79Z 22Z MIGHTY 49C ET {SOD}{DLF,HYF,IEF,MSUDF,MDF}
 43589057 BW 91H 100W RITA 79Z ET {DLF,HYF,IEF,MSUDF,MDF}

GOLDEN-OAK 4J MAXIUM 28M {SOD}{DLF,HYF,IEF}
 NJW 4037 80L FAITH 67U {DOD}{DLF,HYF,IEF,MSUDF}
 NJW 73S M326 TRUST 100W ET {SOD}{CHB}{DLF,HYF,IEF,MSUDF,MDF,DBF}
 REMITALL RITA 91H {DLF,HYF,IEF}



KCF BENNETT SUMMIT B261 ET {SOD}{CHB}{DLF,HYF,IEF,MSUDF}
UPS MISS SUMMIT 6082 {MSUDF,MDF}
 P43710327 UPS MISS HOMESTEAD 4124 {MSUDF,MDF}

KCF BENNETT INFLUENCE Z80 {DLF,HYF,IEF,MDF,DBF}
 KCF MISS 3027 Z44 ET {DLF,HYF,IEF,MSUDF}
 NJW 73S W18 HOMESTEAD 4Y ET {CHB}{DLF,HYF,IEF,MDF}
 UPS MISS DOMINO 78711 {DLF,HYF,IEF,MSUDF}

- What a beautiful female to start our inaugural Rockin' in the South offering. When it comes to ideal udder and teat quality, as well as superb balance and feminism, 9090 exhibits it all. It'll be hard to find a donor who can produce replacement females, big stout bulls, and competitive animals in the show ring like she has done. A proven track record and excellent flush history are just other compliments to this donor female.
- 10 % TEAT, CW; 4% REA
- Averages 16 grade one embryos a flush.
- Pasture exposed from 1/15/24 to 4/3/24 to NJW Manifest 87G. Safe in calf.

BMSI	420																	
BIIS	496	CE	BW	WW	YW	DMI	SC	SCF	MM	M&G	MCE	MCW	UDDR	TEAT	CW	FAT	REA	MARB
CHBS	126	4.3	4.0	64	101	0.5	1.2	19.9	31	63	1.6	100	1.40	1.40	84	0.032	0.79	0.04



WF JTW 9365 Entice 9090 2503 ET – Son of Lot 1, Full Brother to Lot 2



UPS Entice 9365 ET – Sire of Lot 2



- What an exciting way to start off our Steadfast 156J offering. If you're looking for a female with beautiful udder families stacked on top of each other, a dark cherry red, long neck, cool look with tons of potential here's one to take a look at.
- 10% SC, SCF, MM, UDDER, CHB; 5% CW, REA, BMI, BII

Lot 1A — CLC 156J Steady 9090 227L

1A **CLC 156J STEADY 9090 227L**
Cow P44541597 Calved: 10/9/23 Tattoo: RE 227L

NJW 792 Z311 ENDURE 173D ET (SOD)(CHB)(DLFHYFIEFMSUDFMDDF) KCF BENNETT ENCORE Z311 ET (SOD)(CHB)(DLFHYFIEFMSUDFMDDF) BW 91H 100W RITA 79Z ET (DLFHYFIEFMSUDFMDF) NJW 202C173DSTEADFAST 156J ET (CHB)(DLFHYFIEFMSUDFMDDF) NJW 73S W18 HOMEGROWN 8Y ET (SOD)(DLFHYFIEFMSUDFMDDF) NJW 73S 88X DAYDREAM 160Z (DOD)(DLFHYFIEFMSUDFMDF) P44276463 NJW 160Z 8Y HOME MAKER 202C (DLFHYFIEFMSUDFMDDF) NJW 792 Z22 MIGHTY 49C ET (SOD)(DLFHYFIEFMSUDFMDF) NJW 67U 28M BIG MAX 22Z (DLFHYFIEFMD) UPS MISS MIGHTY 9090 (DLFHYFIEFMSUDFMDF) BW 91H 100W RITA 79Z ET (DLFHYFIEFMSUDFMDF) KCF BENNETT SUMMIT B261 ET (SOD)(CHB)(DLFHYFIEFMSUDF) P44045505 UPS MISS SUMMIT 6082 (MSUDPMDP) UPS MISS HOMESTEAD 4124 (MSUDPMDP)

BMI\$	470																	
BII\$	555	CE	BW	WW	YW	DMI	SC	SCF	MM	M&G	MCE	MCW	UDDR	TEAT	CW	FAT	REA	MARB
CHBS	153	4.9	3.2	63	101	0.3	1.5	21.9	33	65	0.6	109	1.45	1.40	93	0.047	0.84	0.17

2 **CLC 9365 ENTICE 9090 158 ET**
Cow P44448432 Calved: 1/2/23 Tattoo: RE 158K

NJW 792 Z311 ENDURE 173D ET (SOD)(CHB)(DLFHYFIEFMSUDFMDDF) KCF BENNETT ENCORE Z311 ET (SOD)(CHB)(DLFHYFIEFMSUDFMDDF) BW 91H 100W RITA 79Z ET (DLFHYFIEFMSUDFMDF) UPS ENTICE 9365 ET (CHB)(DLFHYFIEFMSUDF) CHURCHILL SENSATION 028X (SOD)(DLFHYFIEFMDDF) P44058137 UPS MISS SENSATION 2277 ET (DLFHYFIEFMDDF) UPS JT MISS NEON 7811 IET (DLFHYFIEFDBP) NJW 73S 88X DAYDREAM 160Z (DOD)(DLFHYFIEFMSUDFMDF) NJW 67U 28M BIG MAX 22Z (DLFHYFIEFMD) UPS MISS MIGHTY 9090 (DLFHYFIEFMSUDFMDF) BW 91H 100W RITA 79Z ET (DLFHYFIEFMSUDFMDF) KCF BENNETT SUMMIT B261 ET (SOD)(CHB)(DLFHYFIEFMSUDF) P44045505 UPS MISS SUMMIT 6082 (MSUDPMDP) UPS MISS HOMESTEAD 4124 (MSUDPMDP)

BMI\$	539																	
BII\$	633	CE	BW	WW	YW	DMI	SC	SCF	MM	M&G	MCE	MCW	UDDR	TEAT	CW	FAT	REA	MARB
CHBS	161	-1.3	5.3	70	117	0.7	2.0	26.3	37	72	2.0	87	1.40	1.40	99	0.012	1.02	0.17

- A heifer with a great amount of bone, muscle, and depth here! One that has all the makeup to be a future powerhouse donor. 158 has shown competitively at all levels and has the makings to be an excellent producer for years to come. She exhibits such a rare blend of carcass and phenotype. This is one we truly think a whole lot of.
- 10% UDDER, TEAT; 5% WW, YW, CHB; 1% SC, SCF, MG, CW, REA, BMI, BII
- Actual Carcass Scans: 12.41 REA, 5.37 IMF
- Bred AI on 3/29/24 to Huth Deluxe K016, then pasture exposed from 4/7/24 to 5/11/24 to WF CLC JT Wild Card 76E 2505ET.
- Retaining the right to one (1) flush of a minimum of six (6) freezable grade one embryos at the buyer's convenience, and the seller's expense.



Lot 2 — CLC 9365 Entice 9090 158 ET



Lot 3 — CLC Lady Merit 8144 145K ET

- Sometimes you try a cross that's a little off-the-wall and every now and then it sticks! We thought JW Merit would be a great blend to throw on top of our Beef 38W donor 8144F. Such a super mix of high-quality production type cattle and top-notch genomic profiles. This is one that's hard to let go.
- 10% MCE; 5% CE, MARB; 1% SCF, UDDER, TEAT, BMI, BII
- Actual Carcass Scans: REA 10.92, IMF 6.97
- Bred AI on 12/29/23 to Huth Deluxe K016, then pasture exposed from 1/10/24 to 4/3/24 to WHR 845C 592F Beefmaker 697I. Safe to pasture exposure with heifer calf.



RHF 38W Lady Yetta 8144F ET — Dam of Lot 3

3 CLC LADY MERIT 8144 145K ET {DLF,HYF,IEF,MSUDF}


P44448440 Calved: **11/10/22** Tattoo: **RE 145K**

Cow
 JW X651 TESTED 1857 ET (CHB){DLF,HYF,IEF,MSUDF,MDF} EFBEEF TFL U208 TESTED X651 ET (SOD){CHB}{DLF,HYF,IEF,MSUDF}
 JW 1857 MERIT 21134 (DLF,HYF,IEF,MSUDF,MDF,DBF) KCF MISS 22S A261 (DLF,HYF,IEF,MSUDF)
 P44212986 JW 33Z VICTORIA 19027 (DLF,HYF,IEF,MSUDF) JDH VICTOR 719T 33Z ET (SOD){CHB}{DLF,HYF,IEF,MSUDF,DBF}
 JW 028X DOMINETTE 1417 (DLF,HYF,IEF)
 NJW 76S P20 BEEF 38W ET (SOD){DLF,HYF,IEF,MSUDF,MDF} SHF PROGRESS P20 (SOD){DLF,HYF,IEF,MDF,DBF}
 RHF 38W LADY YETTA 8144F ET (DLF,HYF,IEF,MSUDF) NJW 55N STARDUST 76S (DLF,HYF,IEF,MSUDF,MDF)
 P44060419 THM VICKY YETTA 4140 (DLF,HYF,IEF) STAR 8006 ENVETO 163M ET (SOD){DLF,HYF,IEF}
 THM VICTORIA 2131 (HYF) THM VICTORIA 2131 (HYF)

BMSIS	505	CE	BW	WW	YW	DMI	SC	SCF	MM	M&G	MCE	MCW	UDDR	TEAT	CW	FAT	REA	MARB
CHBS	143	10.4	1.6	64	100	0.7	1.2	25.9	31	63	5.8	82	1.50	1.60	71	-0.008	0.55	0.40

4 CLC 7850 MARIAH 0103 110K ET {DLF,HYF,IEF,MSUDF}

44448433 Calved: **10/2/22** Tattoo: **RE 110K**

Cow
 NIW 79Z 22Z MIGHTY 49C ET (SOD){DLF,HYF,IEF,MSUDF,MDF} NIW 67U 28M BIG MAX 22Z (DLF,HYF,IEF,MDF)
 UPS MIGHTY 7850 ET (DLF,HYF,IEF,MSUDF,MDF) BW 91H 100W RITA 79Z ET (DLF,HYF,IEF,MSUDF,MDF)
 43872790 UPS MISS HOMETOWN 4279 ET (DLF,HYF,IEF,MSUDF,MDF) NIW 73S W18 HOMETOWN 10Y ET (SOD){CHB}{DLF,HYF,IEF,MSUDF,MDF)
 UPS MISS DIAMOND 1353 (DLF,HYF,IEF,MSUDF)
 GOLDEN OAK OUTCROSS 18U (SOD){CHB}{DLF,HYF,IEF,MSUDF} GOLDEN-OAK FUSION 3S (SOD){DLF,HYF,IEF,MSUDF)
 H W4 MARIAH 0103 ET (DLF,HYF,IEF,MSUDF,MDF) GOLDEN-OAK 60D MALLORY 15M (HYF)
 43091169 HH MISS ADVANCE 316N 1ET (DLF,HYF,IEF) HH ADVANCE 0024K (SOD){DLF,IEF)
 CL 1 DOMINET 496 1ET

BMSIS	466	CE	BW	WW	YW	DMI	SC	SCF	MM	M&G	MCE	MCW	UDDR	TEAT	CW	FAT	REA	MARB
CHBS	110	3.6	2.7	54	91	0.5	1.6	24.2	38	65	-1.4	79	1.20	1.20	85	0.012	0.63	-0.14



Lot 4 — CLC 7850 Mariah 0103 110K ET

- A great opportunity to tap into the immortal Mariah cow family! 110K is big, stout, with tons of color and pigment, as well as ideal udder development for her age. Every time I look at this offer I question why we are letting her go!
- 10% CW, BII, MG; 5% SC, SCF, BMI; 1% MM
- Actual Carcass Scans: REA 11.11, IMF 3.08
- Bred AI on 12/29/23 to Huth Deluxe K016, then pasture exposed from 1/10/24 to 4/3/24 to WHR 845C 592F Beefmaker 697I. Safe to AI.
- Retaining the right to one (1) flush of a minimum of six (6) freezable grade one embryos at the buyer's convenience, and the seller's expense.




H W4 Mariah 0103 ET — Dam of Lot 4



Lot 5 — CLC 0016 Final Print 103J 175L


- To say the least, we have absolutely loved our Final Print calves here at Chapman Land and Cattle! This young female here is no exception, such a well balance of phenotype and genotype. 175L is a bona fide donor prospect. When you plug in the criteria on the American Hereford Association website of her birthweight, weaning weight, and yearling weight, she is one of only two animals in the entire database that meets the requirements with the other one being her sire, RST Final Print 0016 himself. 175L is a progressive breeding piece for years down the road without a doubt.
- 10% BW, SC, MCE; 3% CW; 1% WW, YW, MM, MG
- Actual Carcass Scans: REA 10.30, IMF 3.66
- Sells open and ready to breed.

5 CLC 0016 FINAL PRINT 103J 175L (DLF,HYF,IEF,MSUDF)
Cow P44495321 Calved: 3/1/23 Tattoo: RE 175L

BOYD 31Z BLUEPRINT 6153 (DLF,HYF,IEF,MSUDF,MDF,DBF) R LEADER 6964 (SOD)(DLF,HYF,IEF,MSUDF,DBF)
RST FINAL PRINT 0016 (CHB)(DLF,HYF,IEF,MSUDF,MDF) NJW 91H 100W RITA 31Z ET (DLF,HYF,IEF)
 P44178105 RST MS X651 TESTED 8032 (DLF,HYF,IEF,MSUDF,MDF,DBF) EFBEEF TFL U208 TESTED X651 ET (SOD)(CHB)(DLF,HYF,IEF,MSUDF)
 SR EXPEDITION 619G ET (CHB)(DLF,HYF,IEF,MSUDF) NJW LONG HAUL 36E ET (DLF,HYF,IEF,MSUDF,MDF,DBF)
DVOR 619G 920 SANDI 103J (DLF,HYF,IEF,MSUDF) CHURCHILL LADY 7189E ET (DLF,HYF,IEF,MSUDF,MDF,DBF)
 P44250118 DVOR R561 174E LADY SANDI 920G (DLF,HYF,IEF,MSUDF) TH FRONTIER 174E (SOD)(DLF,HYF,IEF,MSUDF,MDF)
 TMR B765 BLAIR R561 (HYP)

BMSI	412																	
BIIS	519	CE	BW	WW	YW	DMI	SC	SCF	MM	M&G	MCE	MCW	UDDR	TEAT	CW	FAT	REA	MARB
CHBS	137	5.5	0.7	87	130	1.0	1.5	18.7	42	85	6.2	123	1.30	1.20	95	0.072	0.69	0.15

6 CLC 5J H65 NEW BEGINNINGS 186L (DLF,HYF,IEF,MSUDF)
Cow P44483928 Calved: 3/13/23 Tattoo: RE 186L

GERBER CANAAN 041C (CHB)(DLF,HYF,IEF,MSUDF,MDF,DBF) KCF BENNETT REVOLUTION X51 (SOD)(CHB)(DLF,HYF,IEF,MSUDF,DBF)
GERBER HIGH TIME H65 (CHB)(DLF,HYF,IEF,MSUDF,MDF) GERBER 627S TRISH 934W (DLF,HYF,IEF,MSUDF)
 P44189906 GERBER Z426 DIXIE E066 (DLF,HYF,IEF,MSUDF,DBF) MOHICAN THM EXCEDE Z426 (SOD)(DLF,HYF,IEF,MSUDF,MDF,DBF)
 JW X651 TESTED 1857 ET (CHB)(DLF,HYF,IEF,MSUDF,MDF) SCHU-LAR EFBEEF 2013 DIXIE 9X (DLF,HYF,IEF)
CLC 1857 NEW BEGINNINGS 23J (DLF,HYF,IEF,MSUDF) EFBEEF TFL U208 TESTED X651 ET (SOD)(CHB)(DLF,HYF,IEF,MSUDF)
 P44266220 CMR Z208 MANDY G406 ET (DLF,HYF,IEF,MSUDF) KCF MISS 22S A261 (DLF,HYF,IEF,MSUDF)
 /S MANDATE 66589 ET (DLF,HYF,IEF,MSUDF,MDF,DBF)
 GV CMR 9328 MS 5022R Z208 (DLF,HYF,IEF,MSUDF)

BMSI	448																	
BIIS	566	CE	BW	WW	YW	DMI	SC	SCF	MM	M&G	MCE	MCW	UDDR	TEAT	CW	FAT	REA	MARB
CHBS	178	6.1	2.1	77	120	1.0	1.3	19.7	27	65	7.0	125	1.60	1.40	96	0.002	0.79	0.48



Lot 6 — CLC 5J H65 New Beginnings 186L

- The first natural calf out of the high selling bred heifer in our 2023 February sale. Her mother, later named New Beginnings, who is co-owned with 5J Cattle Company in Clayton, North Carolina exhibits such a unique side of the Hereford breed. 23J who is a half sib to popular herd sire, JW Merit, has such an incredible amount of depth, rib, shape, and just overall body to go with her exquisite udder. This heifer out of 23J and Genex sire, Gerber High Time, is sure to be one that intrigues many.
- 10% MG, BMI; 5% MCE, REA, BII, TEAT; 1% WW, YW, UDDR, CW, CHB
- Actual Carcass Scans: REA 9.36, IMF 5.76
- Sells open and ready to breed.
- Owned with 5J Cattle Company in Clayton, North Carolina.



CLC 1857 New Beginnings 23J — Dam of Lot 6



Lot 7 — 77 Miss Ellison 16E 80F

7
Cow

77 MISS ELLISON 16E 80F (DLF,HYF,IEF,MSUDF,MDF,DBF)

P44015659 Calved: **12/15/18** Tattoo: **BE 80F**

NJW 33TB 100W TRUST 167Y (SOD)(CHB)(DLF,HYF,IEF,MSUDF,MDF) SHF ELLISON 167Y E149 (CHB)(DLF,HYF,IEF,MDF,DBF) P43793563 SHF L388 Z210 C96 ET (DLF,HYF,IEF,MSUDF,DBP) NJW 73S M326 TRUST 100W ET (SOD)(CHB)(DLF,HYF,IEF,MSUDF,MDF,DBF) BROOKVIEW 242 TEQUILA ROSE 33T (DLF,HYF,IEF) GV CMR X151 MR 847 Z210 (SOD)(DLF,HYF,IEF,MDF) SHF L388 X36 Z25 ET (DLF,HYF,IEF,DBP) **77 LOEWEN C&L HOMERUN 33N 72Z** (DLF,HYF,IEF,DBP) **77 MISS HOMERUN Z27 16E** (DLF,HYF,IEF,MSUDF,DBP) P43819243 **77 ELEGANT S277 4R ET** (DLF,HYF,IEF,DBP) HH ADVANCE 8203U ET (SOD)(DLF,IEF) HVH OKSANA 4L 33N (DLF,HYF,IEF,DBP) MSU TCF REVOLUTION 4R (SOD)(DLF,HYF,IEF,MDF,DBP) HVH CMR P606 LADY S277 ET (DLF,HYF,IEF)

BMSIS	425																	
BII\$	500	CE	BW	WW	YW	DMI	SC	SCF	MM	M&G	MCE	MCW	UDDR	TEAT	CW	FAT	REA	MARB
CHBS	129	8.8	0.7	53	85	0.2	1.1	20.9	16	42	5.9	88	1.60	1.70	77	0.042	0.45	0.14

- You get such a proven commodity when looking at the great 80F donor cow, the successfulness of this cow as a donor is the only reason, we are letting her go. Such a good producer, and with such high-quality calves, we want to share the special genetics with another breeder! Whether it be bulls or females 80F has been so consistent, across-the-board. Her color, rib and udder quality are what truly makes her special.
- 10% CE, MCE; 1% UDDER, TEAT
- Homozygous Polled.
- Sells open and ready to flush.
- Selling as a guaranteed flusher.
- Retaining the right to one (1) flush of a minimum of six (6) freezable grade one embryos at the buyer's convenience, and the seller's expense.
- Owned with 5J Cattle Company in Clayton, North Carolina.



NJW 133A 6589 Manifest 87G ET — Sire of Lot 7A

7A
Bull

CLC 5J 87G MANIFEST 80F 257L

P44541919 Calved: **11/9/23** Tattoo: **RE 257L**

/S MANDATE 66589 ET (DLF,HYF,IEF,MSUDF,MDF,DBF) R LEADER 6964 (SOD)(CHB)(DLF,HYF,IEF,MSUDF,DBF) **NJW 133A 6589 MANIFEST 87G ET** (DLF,HYF,IEF,MSUDF,MDF,DBF) /S LADY DOMINO 0158X (DLF,HYF,IEF) P44057384 BW NJW 76S 8Y HOMESPUN 133A (DLF,HYF,IEF,MSUDF,MDF) NJW 73S W18 HOMETOWN 10Y ET (SOD)(CHB)(DLF,HYF,IEF,MSUDF,MDF) NJW 55N STARDUST 76S (DLF,HYF,IEF,MSUDF,MDF) SHF ELLISON 167Y E149 (CHB)(DLF,HYF,IEF,MDF,DBF) **77 MISS ELLISON 16E 80F** (DLF,HYF,IEF,MSUDF,MDF,DBF) NJW 33TB 100W TRUST 167Y (SOD)(CHB)(DLF,HYF,IEF,MSUDF,MDF) P44015659 **77 MISS HOMERUN Z27 16E** (DLF,HYF,IEF,MSUDF,DBP) **77 LOEWEN C&L HOMERUN 33N 72Z** (DLF,HYF,IEF,DBP) **77 ELEGANT S277 4R ET** (DLF,HYF,IEF,DBP)

BMSIS	472																	
BII\$	559	CE	BW	WW	YW	DMI	SC	SCF	MM	M&G	MCE	MCW	UDDR	TEAT	CW	FAT	REA	MARB
CHBS	122	10.0	0.2	59	96	0.4	1.5	24.5	23	53	4.4	103	1.55	1.60	74	0.067	0.38	0.17



Lot 8A — CLC 156J Steady 8433 228L

- An ultra-cool and attractive but yet square made Steadfast daughter. One with all the maternal cow makeup you could want.
- 10% TEAT, REA, BII, BMI; 5% MARB, CHB; 1% UDDER

8
Cow

EXR BREEZE 8433 (DLF,HYF,IEF,MSUDF,MDF,DBF)

P43952776 Calved: **9/20/18** Tattoo: **BE 8433**

NJW 73S M326 TRUST 100W ET (SOD)(CHB)(DLF,HYF,IEF,MSUDF,MDF,DBF)
 NJW 33TB 100W TRUST 167Y (SOD)(CHB)(DLF,HYF,IEF,MSUDF,MDF)
 P43214415 BROOKVIEW 242 TEQUILA ROSE 33T (DLF,HYF,IEF)



BAR S LHF 028 240 (SOD)(CHB)(DLF,HYF,IEF)
 GKB 240 BREEZE B169 232C (DLF,HYF,IEF,MSUDF,DBP)
 P43683261 GKB TMH NEW ERA BREEZE B169 ET (DLF,HYF,IEF,MSUDF,MDF,DBP)

KCF BENNETT 3008 M326 (SOD)(CHB)(DLF,HYF,IEF,MDF,DBF)
 NJW P606 72N DAYDREAM 73S (DLF,HYF,IEF,MSUDF,MDF)
 FELTONS LEGEND 242 (SOD)(HYF)
 BROOKVIEW M48 MIS RILEY ROSE (DLF,HYF,IEF)

CHURCHILL SENSATION 028X (SOD)(DLF,HYF,IEF,MDF,DBF)
 CHURCHILL LADY 078X (DLF,HYF,IEF)
 C NEW ERA ET (DLF,HYF,IEF,DBP)
 GKB 146 BREEZE B73 ET (DLF,HYF,IEF)

BMI\$	383	CE	BW	WW	YW	DMI	SC	SCF	MM	M&G	MCE	MCW	UDDR	TEAT	CW	FAT	REA	MARB
CHBS	155	8.6	2.1	39	82	0.0	0.7	17.1	20	40	5.8	93	1.50	1.50	65	0.072	0.52	0.49

8A
Cow

CLC 156J STEADY 8433 228L

P44541598 Calved: **10/10/23** Tattoo: **RE 228L**

NJW 79Z Z311 ENDURE 173D ET (SOD)(CHB)(DLF,HYF,IEF,MSUDF,MDF,DBF)
 NJW 202C173DSTEADFAST 156J ET (CHB)(DLF,HYF,IEF,MSUDF,MDF,DBF)
 P44276463 NJW 160Z 8Y HOME MAKER 202C (DLF,HYF,IEF,MSUDF,MDF,DBF)

NJW 33TB 100W TRUST 167Y (SOD)(CHB)(DLF,HYF,IEF,MSUDF,MDF)
 EXR BREEZE 8433 (DLF,HYF,IEF,MSUDF,MDF,DBF)
 P43952776 GKB 240 BREEZE B169 232C (DLF,HYF,IEF,MSUDF,DBP)

KCF BENNETT ENCORE Z311 ET (SOD)(CHB)(DLF,HYF,IEF,MSUDF,MDF,DBF)
 BW 91H 100W RITA 79Z ET (DLF,HYF,IEF,MSUDF,MDF)
 NJW 73S W18 HOMEGROWN 8Y ET (SOD)(DLF,HYF,IEF,MSUDF,MDF,DBF)
 NJW 73S 88X DAYDREAM 160Z (SOD)(DLF,HYF,IEF,MSUDF,MDF)

NJW 73S M326 TRUST 100W ET (SOD)(CHB)(DLF,HYF,IEF,MSUDF,MDF,DBF)
 BROOKVIEW 242 TEQUILA ROSE 33T (DLF,HYF,IEF)
 BAR S LHF 028 240 (SOD)(CHB)(DLF,HYF,IEF)
 GKB TMH NEW ERA BREEZE B169 ET (DLF,HYF,IEF,MSUDF,MDF,DBP)

BMI\$	452	CE	BW	WW	YW	DMI	SC	SCF	MM	M&G	MCE	MCW	UDDR	TEAT	CW	FAT	REA	MARB
CHBS	167	7.1	2.2	50	91	0.1	1.3	20.5	28	53	2.7	105	1.50	1.45	83	0.067	0.71	0.39

- Super functional kind of female that just always gives us a really top-notch calf. Very maternal pedigree with udder and teat quality that shows. This Deluxe calf out of her could sure be something special.
- 10% CE, MCE; 5% TEAT, CHB; 1% UDDER, MARB
- Bred AI on 12/29/23 to Huth Deluxe K016, then pasture exposed from 1/10/24 to 4/3/24 to NJW Manifest 87G. Safe to AI with heifer calf.



Lot 8 — EXR Breeze 8433



Lot 9A — CLC 199B Cowboss 164H 231L

• A dark cherry red, thick made NJW Cowboss 199B daughter. Again, highly maternal bred an extra shot of muscle, certainly the right kind of heifer.

9 NJW 67D 252F FOREVER 164H (DLF,HYF,IEF,MSUDF,MDF)
Cow P44169464 Calved: 2/24/20 Tattoo: RE 67D/LE 164H

NJW 160Z 10W WHIT 33B (DLF,HYF,IEF,MSUDF,MDF,DBF) LJR 023R WHITMORE 10W (SOD)(DLF,HYF,IEF,MSUDF,MDF,DBF)
 NJW 79Z 33B FORWARD 252F (DLF,HYF,IEF,MSUDF,MDF,DBF) NJW 73S 88X DAYDREAM 160Z (DOD)(DLF,HYF,IEF,MSUDF,MDF)
 P43943438 BW 91H 100W RITA 79Z ET (DLF,HYF,IEF,MSUDF,MDF) NJW 73S M326 TRUST 100W ET (SOD)(CHB)(DLF,HYF,IEF,MSUDF,MDF,DBF)
 REMITALL RITA 91H (DLF,HYF,IEF)
 AXA GOLDEN-OAKXCEED ET 704X (DLF,HYF,IEF,MSUDC,MDF) SHF RIB EYE M326 R117 (SOD)(CHB)(DLF,HYF,IEF)
 NJW 17Y 704X FOREVER 67D (DLF,HYF,IEF,MSUDF,MDF) NCX MISS JR NELLIE 528N (DLF,HYF,IEF,MSUDC)
 P43722618 NJW 51U 38W FOREVER 17Y (DLF,HYF,IEF,MSUDF) NJW 76S P20 BEEF 38W ET (SOD)(DLF,HYF,IEF,MSUDF,MDF)
 NJW R125 67M FOREVER 51U (DLF,HYF,IEF)

BMSI	417																	
BIIS	488	CE	BW	WW	YW	DMI	SC	SCF	MM	M&G	MCE	MCW	UDDR	TEAT	CW	FAT	REA	MARB
CHBS	102	4.4	3.0	54	84	0.5	1.1	21.9	24	51	3.1	61	1.50	1.50	66	-0.018	0.45	0.06

9A CLC 199B COWBOSS 164H 231L
Cow P44541599 Calved: 10/10/23 Tattoo: RE 231L

NJW 98S R117 RIBEYE 88X ET (SOD)(DLF,HYF,IEF,MSUDF,MDF,DBF) SHF RIB EYE M326 R117 (SOD)(CHB)(DLF,HYF,IEF)
 NJW 78P 88X COWBOSS 199B ET (DLF,HYF,IEF,MDF) NJW 9126J DEW DOMINO 98S (DOD)(DLF,HYF,IEF)
 P43483216 NJW BW LADYSPORT DEW 78P ET (DLF,HYF,IEF) RU 20X BOULDER 57G (SOD)
 SADDLE VLY LADYSPORT 120
 NJW 79Z 33B FORWARD 252F (DLF,HYF,IEF,MSUDF,MDF,DBF) NJW 160Z 10W WHIT 33B (DLF,HYF,IEF,MSUDF,MDF,DBF)
 NJW 67D 252F FOREVER 164H (DLF,HYF,IEF,MSUDF,MDF) BW 91H 100W RITA 79Z ET (DLF,HYF,IEF,MSUDF,MDF)
 P44169464 NJW 17Y 704X FOREVER 67D (DLF,HYF,IEF,MSUDF,MDF) AXA GOLDEN-OAKXCEED ET 704X (DLF,HYF,IEF,MSUDC,MDF)
 NJW 51U 38W FOREVER 17Y (DLF,HYF,IEF,MSUDF)

BMSI	379																	
BIIS	446	CE	BW	WW	YW	DMI	SC	SCF	MM	M&G	MCE	MCW	UDDR	TEAT	CW	FAT	REA	MARB
CHBS	104	3.2	3.2	55	89	0.3	1.2	18.9	31	58	2.8	67	1.45	1.45	63	-0.018	0.50	0.04

• An ideal uddered NJW Forward 252F daughter who branches from the Ned and Jan Ward program in Decker, Montana. This female continues to outdo herself time and time again. Look for her to be a prominent producer, many years down the road.

• 10% SCF; 3% UDDER, TEAT

• Bred AI on 12/29/23 to Huth Deluxe K016, then pasture exposed from 1/10/24 to 4/3/24 to NJW Manifest 87G. Safe to AI with heifer calf.



Lot 9 — NJW 67D 252F Forever 164H



- A super nice square hipped, attractive, Manifest 87G daughter. One that can catch your eye, and that continues to get better with age. We are very fond of this young female.
- 10% YW, BMI, BI; 5% SC, SCF

Lot 10A — CLC 87G Manifest 54H 218L

10 ILR 332A LADY DAISY 54H (DLF,HYF,IEF,MSUDF)
Cow P44135282 Calved: 4/14/20 Tattoo: LE 54H

NJW 73S W18 HOMETOWN 10Y ET (SOD)(CHB)(DLF,HYF,IEF,MSUDF,MDC) SHF WONDER M326 W18 ET (SOD)(CHB)(DLF,HYF,IEF,MDC,DBF)
 ILR HOMETOWN 332A ET (DLF,HYF,IEF,MSUDF,MDF) NJW P606 72N DAYDREAM 73S (DLF,HYF,IEF,MSUDF,MDF)
 P43385499 NJW 43T 4037 FOREVER EDNA 28X ET (DLF,HYF,IEF) THM DURANGO 4037 (SOD)(DLF,HYF,IEF)
 NJW FOREVER RADIANT 43T ET (DLF,HYF,IEF)
 BR BELLE AIR 6011 (CHB)(DLF,HYF,IEF,MSUDF,DBF) BR S LHF 028 240 (SOD)(CHB)(DLF,HYF,IEF)
 WMC 6011 2C DAISEY 20F ET (DLF,HYF,IEF,MSUDF) BR BELLE 4082 ET (DLF,HYF,IEF,MSUDF)
 P43899629 WMC A152 9328 DAISEYMAE 2C ET (DLF,HYF,IEF,MSUDF) GV CMR X161 TIMES UP A152 (DLF,HYF,IEF)
 GRANDVIEW CMR MS MATERIAL 9328 (DLF,HYF,IEF,MSUDF)

BMIS	390																	
BIIS	454	CE	BW	WW	YW	DMI	SC	SCF	MM	M&G	MCE	MCW	UDDR	TEAT	CW	FAT	REA	MARB
CHBS	114	-3.1	3.9	57	110	0.3	1.6	18.7	35	64	-4.1	106	1.10	1.10	70	-0.008	0.61	-0.03

- Certainly, an intriguing female within the offering. Her phenotypic makeup is slightly different from some other cows within the sale. She definitely will stand out on Sale Day, a 332A daughter, with a face full of freckles and a ton of flash. Look for her best days to still be in front of her.
- 10% YW, SC, MM
- Bred AI with sexed heifer semen on 12/29/23 to NJW Steadfast 156J, then pasture exposed from 1/10/24 to 4/3/24 to NJW Manifest 87G. Safe to AI.

10A CLC 87G MANIFEST 54H 218L
Cow P44541595 Calved: 10/3/23 Tattoo: RE 218L

/S MANDATE 66589 ET (DLF,HYF,IEF,MSUDF,MDF,DBF) R LEADER 6964 (SOD)(DLF,HYF,IEF,MSUDF,DBF)
 NJW 133A 6589 MANIFEST 87G ET (DLF,HYF,IEF,MSUDF,MDF,DBF) /S LADY DOMINO 0158X (DLF,HYF,IEF)
 P44057384 BW NJW 76S 8Y HOMESPUN 133A (DLF,HYF,IEF,MSUDF,MDC) NJW 73S W18 HOMETOWN 10Y ET (SOD)(CHB)(DLF,HYF,IEF,MSUDF,MDC)
 NJW 55N STARDUST 76S (DLF,HYF,IEF,MSUDF,MDF)
 ILR HOMETOWN 332A ET (DLF,HYF,IEF,MSUDF,MDF) NJW 73S W18 HOMETOWN 10Y ET (SOD)(CHB)(DLF,HYF,IEF,MSUDF,MDC)
 ILR 332A LADY DAISY 54H (DLF,HYF,IEF,MSUDF) NJW 43T 4037 FOREVER EDNA 28X ET (DLF,HYF,IEF)
 P44135282 WMC 6011 2C DAISEY 20F ET (DLF,HYF,IEF,MSUDF) BR BELLE AIR 6011 (CHB)(DLF,HYF,IEF,MSUDF,DBF)
 WMC A152 9328 DAISEYMAE 2C ET (DLF,HYF,IEF,MSUDF)

BMIS	454																	
BIIS	535	CE	BW	WW	YW	DMI	SC	SCF	MM	M&G	MCE	MCW	UDDR	TEAT	CW	FAT	REA	MARB
CHBS	114	4.0	1.8	62	108	0.5	1.7	23.4	33	63	-0.7	112	1.30	1.30	70	0.042	0.46	0.09



Lot 10 — ILR 332A Lady Daisy 54H



- A sharp heifer calf out of a really good young cow. Should be replication of her mother.
- 10% SCF, MM; 5% MCW, TEAT

Lot 11A — CLC 7H Tuff Girl 917J 269L

11
Cow

RMB 341F SOUTHERN BELLE 917J (DLF,HYF,IEF,MSUDF)

P44219383 Calved: **1/25/21** Tattoo: **BE 917J**

R LEADER 6964 (SOD)(DLF,HYF,IEF,MSUDF,DBF)
RMB PRIMETIME 341F (DLF,HYF,IEF)
 P43883545 CES STUNNING 200Z R91 ET (DLF,HYF,IEF,MSUDF)



KCF BENNETT ENCORE Z311 ET (SOD)(CHB)(DLF,HYF,IEF,MSUDF,MDF,DBF)
RMB Z311 SOUTHERN BELLE 695GET (DLF,HYF,IEF,MSUDF,MDF,DBF)
 P44046576 CES JULIA 122L N188 ET (DLF,HYF,IEF,MSUDF,DBP)

HYALITE ON TARGET 936 (SOD)(DLF,HYF,IEF,MSUDC)
 R MISS REVOLUTION 1009 (DOD)(DLF,HYF,IEF,DBP)
 CHURCHILL RED BULL 200Z (SOD)(DLF,HYF,IEF,MSUDF,MDF,DBF)
 STAR SJS SIMPLY STUNNING 111X (DLF,HYF,IEF)

SCHU-LAR ON TARGET 22S (SOD)(CHB)(DLF,HYF,IEF,MSUDF,MDF,DBF)
 KCF MISS REVOLUTION X338 ET (DLF,HYF,IEF,DBP)
 REMITALL ONLINE 122L (SOD)(CHB)(DLF,HYF,IEF,DBP)
 CES JULIA 4009 E195 (DLF,HYF,IEF)

BMS	409																	
BIIS	504	CE	BW	WW	YW	DMI	SC	SCF	MM	M&G	MCE	MCW	UDDR	TEAT	CW	FAT	REA	MARB
CHBS	135	7.0	3.0	69	109	0.6	1.1	19.4	35	70	4.8	84	1.10	1.20	82	0.062	0.48	0.22

11A
Cow

CLC 7H TUFF GIRL 917J 269L

P44541629 Calved: **12/6/23** Tattoo: **RE 269L**

NW 12A 1010 TUFF 168C (DLF,HYF,IEF,MSUDF,MDF,DBF)
NJW 14F 168C TUFF 7H (DLF,HYF,IEF,MSUDF,MDF)
 P44169614 NJW 67U 38Y FAITH 14F ET (DLF,HYF,IEF,MDF)

KT BUILT TUFF 1010 (SOD)(DLF,HYF,IEF,MSUDF,MDF,DBF)
 NJW 25W 8Y SPIRITQUEEN 12A (DLF,HYF,IEF,MSUDF,MDF)
 FHF 9279 DEADWOOD 38Y (SOD)(CHB)(DLF,HYF,IEF,MSUDF,MDF)
 NJW 4037 80L FAITH 67U (DOD)(DLF,HYF,IEF,MSUDF)

RMB PRIMETIME 341F (DLF,HYF,IEF)
RMB 341F SOUTHERN BELLE 917J (DLF,HYF,IEF,MSUDF)
 P44219383 RMB Z311 SOUTHERN BELLE 695GET (DLF,HYF,IEF,MSUDF,MDF,DBF)

R LEADER 6964 (SOD)(DLF,HYF,IEF,MSUDF,DBF)
 CES STUNNING 200Z R91 ET (DLF,HYF,IEF,MSUDF)
 KCF BENNETT ENCORE Z311 ET (SOD)(CHB)(DLF,HYF,IEF,MSUDF,MDF,DBF)
 CES JULIA 122L N188 ET (DLF,HYF,IEF,MSUDF,DBP)

BMS	419																	
BIIS	499	CE	BW	WW	YW	DMI	SC	SCF	MM	M&G	MCE	MCW	UDDR	TEAT	CW	FAT	REA	MARB
CHBS	107	8.1	2.2	59	91	0.3	1.2	21.8	34	63	4.3	56	1.30	1.50	68	0.047	0.33	0.10

- An opportunity to take advantage of a chance to add a young female with lots of great parts to an operation. 917J has so much body as well as the right kind of maternal traits one needs to possess. You could look for her to be a potential donor for someone down the road.
- 10% WW, YW; 5% MM, MG
- Pasture exposed from 1/10/24 to 4/3/24 to NJW Manifest 87G.



Lot 11 — RMB 341F Southern Belle 917J



"156J"
Featured
Sire

NJW 202C173D Steadfast 156J ET

12
Cow

BF 270D MANDY 933 (DLF,HYF,IEF,MSUDF)

P44151270 Calved: **11/19/19** Tattoo: **BE 933**

R LEADER 6964 (SOD)(DLF,HYF,IEF,MSUDF,DBF)
/S MANDATE 66589 ET (DLF,HYF,IEF,MSUDF,MDF,DBF)
P43834732 /S LADY DOMINO 0158X (DLF,HYF,IEF)



NJW 33TB 100W TRUST 167Y (SOD)(CHB)(DLF,HYF,IEF,MSUDF,MDF)
CMF 61X RACHEL 270D (DLF,HYF,IEF,MSUDF)
P43757679 CMF 943T RACHEL 61X (HYF)

HYALITE ON TARGET 936 (SOD)(DLF,HYF,IEF,MSUDC)
R MISS REVOLUTION 1009 (DOD)(DLF,HYF,IEF,DBP)
SHF RIB EYE M326 R117 (SOD)(CHB)(DLF,HYF,IEF)
/S LADY DOMINO 652S (DLF,IEF)

NJW 73S M326 TRUST 100W ET (SOD)(CHB)(DLF,HYF,IEF,MSUDF,MDF,DBF)
BROOKVIEW 242 TEQUILA ROSE 33T (DLF,HYF,IEF)
MCF GVJ JWR 215L DATELINE 041P
CMF 795R RACHEL 943T (HYF)

BMSIS	379																	
BIIS	474	CE	BW	WW	YW	DMI	SC	SCF	MM	M&G	MCE	MCW	UDDR	TEAT	CW	FAT	REA	MARB
CHBS	144	2.7	2.9	67	100	0.2	1.7	16.2	27	60	-1.7	125	1.30	1.40	77	0.062	0.65	0.30

12A
Bull

CLC 9388 ENDEAVOR 933 272L

P44541630 Calved: **12/13/23** Tattoo: **RE 272L**

NJW 79Z 2311 ENDURE 173D ET (SOD)(CHB)(DLF,HYF,IEF,MSUDF,MDF,DBF)
UPS ENDEAVOR 9388 ET (CHB)(DLF,HYF,IEF,MSUDF)
P44058158 UPS MISS MIGHTY 7407 ET (DLF,HYF,IEF)

/S MANDATE 66589 ET (DLF,HYF,IEF,MSUDF,MDF,DBF)
BF 270D MANDY 933 (DLF,HYF,IEF,MSUDF)
P44151270 CMF 61X RACHEL 270D (DLF,HYF,IEF,MSUDF)

KCF BENNETT ENCORE Z311 ET (SOD)(CHB)(DLF,HYF,IEF,MSUDF,MDF,DBF)
BW 91H 100W RITA 79Z ET (DLF,HYF,IEF,MSUDF,MDF)
NJW 79Z 222 MIGHTY 49C ET (SOD)(DLF,HYF,IEF,MSUDF,MDF)
UPS MISS DIAMOND 1353 (DLF,HYF,IEF,MSUDF)

R LEADER 6964 (SOD)(DLF,HYF,IEF,MSUDF,DBF)
/S LADY DOMINO 0158X (DLF,HYF,IEF)
NJW 33TB 100W TRUST 167Y (SOD)(CHB)(DLF,HYF,IEF,MSUDF,MDF)
CMF 943T RACHEL 61X (HYF)

BMSIS	458																	
BIIS	549	CE	BW	WW	YW	DMI	SC	SCF	MM	M&G	MCE	MCW	UDDR	TEAT	CW	FAT	REA	MARB
CHBS	147	3.4	3.0	64	95	0.1	1.5	21.4	31	63	-1.6	106	1.30	1.35	84	0.052	0.75	0.24

- A super marketable pedigree, as well as an extremely functional, hard-working Mandate daughter. Her udder and teat are exactly the kind that you would want on a young cow and her track record backs that up. With her previous calf crops daughter being retained within the herd and her first natural calf being a very good selling bull within our bull sale. She is one that can certainly do a cow herd some good.
- 10% WW, TEAT, MARB, CHB; 5% SC
- Pasture exposed from 1/10/24 to 4/3/24 to WHR 845C 592F Beefmaker 697J. Safe to pasture exposure with heifer calf.



Lot 12 — BF 270D Mandy 933



• Dark colored, well-made Steadfast bull calf. With the right kind of color and structure he is one that should develop out nicely.



Lot 13A — CLC 156J Steady 992 234L

13 SLF 1540 MS 1657 992 (DLF,HYF,IEF,MSUDF,MDF,DBF)

P44178575 Calved: 3/20/19 Tattoo: BE 992

SLF 28U SIR P124 1407 (DLF,HYF,IEF,MSUDF,MDF,DBF)
RB B206 MATERNAL 1407 1657 (DLF,HYF,IEF,MSUDF,DBP)
 P43846602 RB MS MATERNAL B206 ET (DBP)

BOYD BEEF 0057 (DLF,HYF,IEF,DBP)
SLF X46 MISS 0057 1540 (IEP,DBP)
 P43622862 DD MS 47 23 DOMINO X46 (IEP)

PWF LAST CHANCE P124 ET (DLF,HYF,IEF,DBP)
 FSL MISS RIBEYE R117 28U
 CMR GVP MR MATERNAL 156T (SOD)(DLF,HYF,IEF,MSUDF,MDF)
 GRNDVIEW CMR MS NEW ERA Y437ET (DLF,HYF,IEF,DBP)

MSU TCF REVOLUTION 4R (SOD)(DLF,HYF,IEF,MDF,DBC)
 KPY 552 DIXIE 4T ET (HYF)
 4V D4 D H LG DOMINO 523 (DLF,IEF)
 4V MISS P 47 DOMINO T44 (IEP)

BMS	222																	
BIIS	283	CE	BW	WW	YW	DMI	SC	SCF	MM	M&G	MCE	MCW	UDDR	TEAT	CW	FAT	REA	MARB
CHBS	93	2.8	2.2	46	64	0.3	0.7	9.0	19	43	3.1	65	1.20	1.00	58	0.022	0.34	0.15

13A CLC 156J STEADY 992 234L (DBP)

P44541600 Calved: 10/13/23 Tattoo: RE 234L

NJW 79Z Z311 ENDURE 173D ET (SOD)(CHB)(DLF,HYF,IEF,MSUDF,MDF,DBF)
NJW 202C173D STEADFAST 156J ET (CHB)(DLF,HYF,IEF,MSUDF,MDF,DBF)
 P44276463 NJW 160Z 8Y HOME MAKER 202C (DLF,HYF,IEF,MSUDF,MDF,DBF)

RB B206 MATERNAL 1407 1657 (DLF,HYF,IEF,MSUDF,DBP)
SLF 1540 MS 1657 992 (DLF,HYF,IEF,MSUDF,MDF,DBC)
 P44178575 SLF X46 MISS 0057 1540 (IEP,DBP)

KCF BENNETT ENCORE Z311 ET (SOD)(CHB)(DLF,HYF,IEF,MSUDF,MDF,DBF)
 BW 91H 100W RITA 79Z ET (DLF,HYF,IEF,MSUDF,MDF)
 NJW 73S W18 HOMEGROWN 8Y ET (SOD)(DLF,HYF,IEF,MSUDF,MDF,DBF)
 NJW 73S 88X DAYDREAM 160Z (DOD)(DLF,HYF,IEF,MSUDF,MDF)

SLF 28U SIR P124 1407 (DLF,HYF,IEF,MSUDF,MDF,DBF)
 RB MS MATERNAL B206 ET (DBP)
 BOYD BEEF 0057 (DLF,HYF,IEF,DBP)
 DD MS 47 23 DOMINO X46 (IEP)

BMS	372																	
BIIS	449	CE	BW	WW	YW	DMI	SC	SCF	MM	M&G	MCE	MCW	UDDR	TEAT	CW	FAT	REA	MARB
CHBS	136	4.2	2.3	54	82	0.2	1.3	16.5	28	55	1.4	92	1.35	1.20	80	0.042	0.62	0.22

- A long necked, dark red, attractive female, who has always been the kind of cow who truly shows off through the calf she presents at side. 992 is the kind of cow that functionally turns dollars for you year in and year out.
- DBC.
- Bred AI on 12/29/23 to Huth Deluxe K016, then pasture exposed from 1/10/24 to 4/3/24 to NJW Manifest 87G. Safe to AI with bull calf.



Lot 13 — SLF 1540 MS 1657 992



- With an extended front 1/3 and tons of shape and butt, 236L is a Steadfast son with a lot of the correct pieces.
- 10% SC, UDDER, BMI, BII; 5% REA, CHB; 1% CW

Lot 14A — CLC 156J Steady 618G 236L

14
Cow

RMB RL6964 SOUTHERN BELLE 618G (DLF,HYF,IEF,MSUDF)

P43996136 Calved: 2/4/19 Tattoo: BE 618G

HYALITE ON TARGET 936 (SOD)(DLF,HYF,IEF,MSUDC)
R LEADER 6964 (SOD)(DLF,HYF,IEF,MSUDF,DFB)
 P43500058 R MISS REVOLUTION 1009 (DOD)(DLF,HYF,IEF,DFB)



KCF BENNETT M326 S342 (CHB)(DLF,HYF,IEF,MDF)
WHITEHAWK 342 BEEFMAID 96XET (DLF,HYF,IEF)
 P43137564 KCF MISS 9126J T39 (DLF,HYF,IEF)

SCHU-LAR ON TARGET 22S (SOD)(CHB)(DLF,HYF,IEF,MSUDF,MDF,DFB)
 HYALITE TS LASS 310 (DLF,HYF,IEF)
 MSU TCF REVOLUTION 4R (SOD)(DLF,HYF,IEF,MDF,DFB)
 R MISS WRANGLER 3007

KCF BENNETT 3008 M326 (SOD)(CHB)(DLF,HYF,IEF,MDF,DFB)
 KCF MISS M106 P433 (DLF,HYF,IEF)
 CL 1 DOMINO 9126J 1ET (SOD)(DLF,IEF)
 KCF MISS 442 R236 (DOD)(HYP)

BMSI	369																	
BII\$	452	CE	BW	WW	YW	DMI	SC	SCF	MM	M&G	MCE	MCW	UDDR	TEAT	CW	FAT	REA	MARB
CHBS	135	4.6	2.2	63	105	0.6	1.1	16.5	24	56	2.2	101	1.30	1.30	88	0.072	0.64	0.15

14A
Bull

CLC 156J STEADY 618G 236L

P44541601 Calved: 10/13/23 Tattoo: RE 236L

NJW 79Z Z311 ENDURE 173D ET (SOD)(CHB)(DLF,HYF,IEF,MSUDF,MDF,DFB)
NJW 202C173DSTEADFAST 156J ET (CHB)(DLF,HYF,IEF,MSUDF,MDF,DFB)
 P44276463 NJW 160Z 8Y HOME MAKER 202C (DLF,HYF,IEF,MSUDF,MDC,DFB)

R LEADER 6964 (SOD)(DLF,HYF,IEF,MSUDF,DFB)
RMB RL6964 SOUTHERN BELLE 618G (DLF,HYF,IEF,MSUDF)
 P43996136 WHITEHAWK 342 BEEFMAID 96XET (DLF,HYF,IEF)

KCF BENNETT ENCORE Z311 ET (SOD)(CHB)(DLF,HYF,IEF,MSUDF,MDF,DFB)
 BW 91H 100W RITA 79Z ET (DLF,HYF,IEF,MSUDF,MDF)
 NJW 73S W18 HOMEGROWN 8Y ET (SOD)(DLF,HYF,IEF,MSUDF,MDC,DFB)
 NJW 73S 88X DAYDREAM 160Z (DOD)(DLF,HYF,IEF,MSUDF,MDF)

HYALITE ON TARGET 936 (SOD)(DLF,HYF,IEF,MSUDC)
 R MISS REVOLUTION 1009 (DOD)(DLF,HYF,IEF,DFB)
 KCF BENNETT M326 S342 (CHB)(DLF,HYF,IEF,MDF)
 KCF MISS 9126J T39 (DLF,HYF,IEF)

BMSI	445																	
BII\$	533	CE	BW	WW	YW	DMI	SC	SCF	MM	M&G	MCE	MCW	UDDR	TEAT	CW	FAT	REA	MARB
CHBS	157	5.1	2.3	62	103	0.4	1.5	20.2	30	61	0.9	110	1.40	1.35	94	0.067	0.77	0.22

- A super deep bodied powerhouse of a cow, 618G is a female that certainly deserves attention. A direct daughter of the popular R Leader bull she has truly been a progressive tool during her time at CLC. 618G has been a tremendous flusher and has been flushed by three different operations in her short lifetime averaging 14 embryos per flush. She is one that you absolutely would want to make more of. A son of her's is operating as a herd sire for Hereford operations run by Stan East and Stan Webster in Tennessee.
- 1% CW
- Pasture exposed from 1/10/24 to 4/3/24 to NJW Manifest 87G. Safe in calf.



Lot 14 — RMB RL6964 Southern Belle 618G



"87G"
Featured
Sire



NJW 133A 6589 Manifest 87G ET

Lot 15A — CLC 87G MANIFEST 867E 232L

15
Cow

WHR 55576 E12 BEEFMAID 867E (DLF,HYF,IEF,MSUDF)

P43946484 Calved: **8/29/18** Tattoo: **BE 867E**

EFBEEF TFL U208 TESTED X651 ET (SOD)(CHB)(DLF,HYF,IEF,MSUDF)
/S TESTED 55576 (CHB)(DLF,HYF,IEF,MSUDF,MDF)
P43667631 /S LADY EFFICIENT 3370A (DLF,HYF,IEF)



TH 223 711 VICTOR 755T (SOD)(DLF,HYF,IEF,MSUDF,MDF)
FPH MS VICKI 755T E12 (DLF,HYF,IEF,MSUDF)
P43743116 FPH MS VIC U35 REDEEM B160 ET (DLF,HYF,IEF)

EFBEEF FOREMOST U208 (SOD)(CHB)(DLF,HYF,IEF,MSUDF)
EFBEEF P606 MABEL R415
/S EFFICIENT 0925 (CHB)(DLF,HYF,IEF)
/S LADY HARLAND 7190T

DRF JWR PRINCE VICTOR 711 (SOD)(DLF,HYF,IEF,MSUDF)
KBKR 19D DOMINETTE 223 (DLF,HYF,IEF)
KJ HVH 33N REDEEM 485T ET (SOD)(DLF,HYF,IEF,MDF,DBF)
FPH MISS WORLD CLASS VICKI U35 (DLF,HYF,IEF)

BMSI	379																	
BIIS	461	CE	BW	WW	YW	DMI	SC	SCF	MM	M&G	MCE	MCW	UDDR	TEAT	CW	FAT	REA	MARB
CHBS	120	5.7	0.7	53	78	0.1	0.7	18.3	30	56	4.3	45	1.30	1.30	64	0.072	0.43	0.28

15A
Bull

CLC 87G MANIFEST 867E 232L

44542596 Calved: **10/11/23** Tattoo: **RE 232L**

/S MANDATE 66589 ET (DLF,HYF,IEF,MSUDF,MDF,DBF)
NJW 133A 6589 MANIFEST 87G ET (DLF,HYF,IEF,MSUDF,MDF,DBF)
P44057384 BW NJW 76S 8Y HOMESPUN 133A (DLF,HYF,IEF,MSUDF,MDF)

/S TESTED 55576 (CHB)(DLF,HYF,IEF,MSUDF,MDF)
WHR 55576 E12 BEEFMAID 867E (DLF,HYF,IEF,MSUDF)
P43946484 FPH MS VICKI 755T E12 (DLF,HYF,IEF,MSUDF)

R LEADER 6964 (SOD)(DLF,HYF,IEF,MSUDF,DBF)
/S LADY DOMINO 0158X (DLF,HYF,IEF)
NJW 73S W18 HOMETOWN 10Y ET (SOD)(CHB)(DLF,HYF,IEF,MSUDF,MDF)
NJW 55N STARDUST 76S (DLF,HYF,IEF,MSUDF,MDF)

EFBEEF TFL U208 TESTED X651 ET (SOD)(CHB)(DLF,HYF,IEF,MSUDF)
/S LADY EFFICIENT 3370A (DLF,HYF,IEF)
TH 223 711 VICTOR 755T (SOD)(DLF,HYF,IEF,MSUDF,MDF)
FPH MS VIC U35 REDEEM B160 ET (DLF,HYF,IEF)

BMSI	448																	
BIIS	539	CE	BW	WW	YW	DMI	SC	SCF	MM	M&G	MCE	MCW	UDDR	TEAT	CW	FAT	REA	MARB
CHBS	117	8.4	0.2	60	92	0.3	1.3	23.2	30	60	3.6	82	1.40	1.40	67	0.082	0.37	0.24

- 867E has been a knockout producer type of female who has unique blend of body and carcass. She has previously produced a bull who was a member of our pen of five division champion in Cattlemen's Congress 2023.
- Bred AI on 12/29/23 to Huth Deluxe K016, then pasture exposed from 1/10/24 to 4/3/24 to NJW Manifest 87G. Safe to AI.



Lot 15 — WHR 55576 E12 Beefmaid 867E



- A really good colored, well-made bull prospect. Out of Manifest 87G and 890F, he should only get better as he ages.
- 10% CE, SCF, UDDER, TEAT, BII, BMI

Lot 16A — CLC 87G Manifest 890F 266L

16
Cow

WHR 247D 936C BEEFMAID 890F (DLF,HYF,IEF,MSUDF,MDF,DBF)

43951089 Calved: 9/14/18 Tattoo: BE 890F

NJW PMH 66X 8Y HOMESTYLE54BET (DLF,HYF,IEF,MDP)
NJW 79Z 54B HOMESTYLE 247D (CHB)(DLF,HYF,IEF,MSUDF,MDF)
 P43722089 BW 91H 100W RITA 79Z ET (DLF,HYF,IEF,MSUDF,MDF)



GRANDVIEW CMR HAWK L1 ADV 918X (DLF,HYF,IEF)
WHITEHAWK 918 BEEFMAID 936C (DLF,HYF,IEF,DBP)
 43613694 WHITEHAWK 46 BEEFMAID 476A (HYF,DBP)

NJW 73S W18 HOMEGROWN 8Y ET (SOD)(DLF,HYF,IEF,MSUDF,MOC,DBF)
 NJW 78P 4037 LUXURY 66X ET (DLF,HYF,IEF,MSUDF)
 NJW 73S M326 TRUST 100W ET (SOD)(CHB)(DLF,HYF,IEF,MSUDF,MDF,DBF)
 REMITALL RITA 91H (DLF,HYF,IEF)

HH ADVANCE 7034T ET (DLF,HYF,IEF)
 HH MISS ADVANCE 6083S (DLF,IEF)
 J & S WHITEHAWK CSR TIFTON 46X (DLF,HYF,IEF,MDF)
 CES VICTRA 145R H140 (HYF,DBP)

BMSI	362																	
BII\$	426	CE	BW	WW	YW	DMI	SC	SCF	MM	M&G	MCE	MCW	UDDR	TEAT	CW	FAT	REA	MARB
CHBS	108	6.3	3.3	63	103	0.5	0.9	16.9	32	63	4.0	119	1.40	1.40	81	0.022	0.59	-0.10

16A
Bull

CLC 87G MANIFEST 890F 266L

P44541627 Calved: 11/20/23 Tattoo: RE 266L

/S MANDATE 66589 ET (DLF,HYF,IEF,MSUDF,MDF,DBF)
NJW 133A 6589 MANIFEST 87G ET (DLF,HYF,IEF,MSUDF,MDF,DBF)
 P44057384 BW NJW 76S 8Y HOMESPUN 133A (DLF,HYF,IEF,MSUDF,MOC)

NJW 79Z 54B HOMESTYLE 247D (CHB)(DLF,HYF,IEF,MSUDF,MDF)
WHR 247D 936C BEEFMAID 890F (DLF,HYF,IEF,MSUDF,MDF,DBF)
 43951089 WHITEHAWK 918 BEEFMAID 936C (DLF,HYF,IEF,DBP)

R LEADER 6964 (SOD)(DLF,HYF,IEF,MSUDF,DBF)
 /S LADY DOMINO 0158X (DLF,HYF,IEF)
 NJW 73S W18 HOMETOWN 10Y ET (SOD)(CHB)(DLF,HYF,IEF,MSUDF,MOC)
 NJW 55N STARDUST 76S (DLF,HYF,IEF,MSUDF,MDF)

NJW PMH 66X 8Y HOMESTYLE54BET (DLF,HYF,IEF,MDP)
 BW 91H 100W RITA 79Z ET (DLF,HYF,IEF,MSUDF,MDF)
 GRANDVIEW CMR HAWK L1 ADV 918X (DLF,HYF,IEF)
 WHITEHAWK 46 BEEFMAID 476A (HYF,DBP)

BMSI	440																	
BII\$	522	CE	BW	WW	YW	DMI	SC	SCF	MM	M&G	MCE	MCW	UDDR	TEAT	CW	FAT	REA	MARB
CHBS	111	8.7	1.5	64	105	0.6	1.4	22.5	31	63	3.4	118	1.45	1.45	76	0.057	0.45	0.05

- A very nice Homestyle daughter, who comes from the White Hawk program. She has just been such a balanced all-around type of cow in her time here, always throwing a consistent high-quality calf. 890F is a very well-rounded piece to add to a cowherd.
- 10% UDDER, TEAT
- Bred AI to NJW Steadfast 156J with sexed heifer semen on 12/29/23, then pasture exposed from 1/10/24 to 4/3/24 to NJW Manifest 87G. Safe to AI with heifer calf.



Lot 16 — WHR 247D 936C Beefmaid 890F



Lot 17 — WMC 384E 2B Rachael 514H ET

17 WMC 384E 2B RACHAEL 514H ET (DLF,HYF,IEF,MSUDF,MDF,DBF)

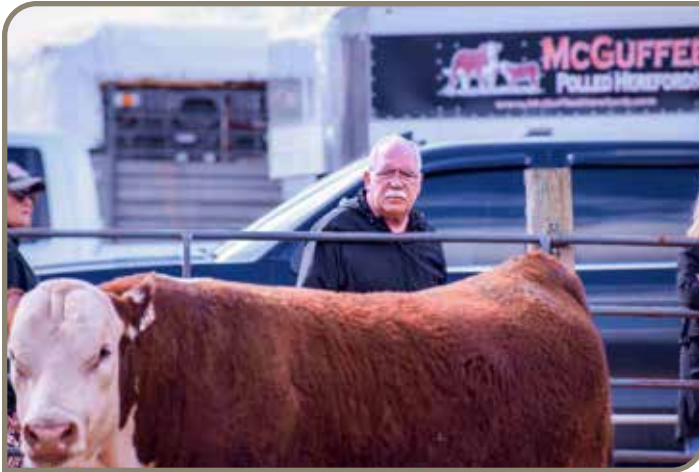
Cow P44224085 Calved: 9/30/20 Tattoo: RE WMC/LE 514H

R LEADER 6964 (SOD)(DLF,HYF,IEF,MSUDF,DBF)
 CMF 3005 EPIC 384E ET (DLF,HYF,IEF,MDF,DBF)
 P43876003 GRASSY RUN RACHEL 3005ET (DLF,HYF,IEF,MSUDF,DBF)
 ABRA 719T RANSUM 17Z (DLF,HYF,IEF,MSUDF,DBF)
 WMC 17Z FANCY VICTOR 2B (DOD)(DLF,HYF,IEF,MSUDF,MDF,DBF)
 P43468387 WMC BOOMERS PEARL 10Z (DOD)(DLF,HYF,IEF,MSUDF)

HYALITE ON TARGET 936 (SOD)(DLF,HYF,IEF,MSUDC)
 R MISS REVOLUTION 1009 (DOD)(DLF,HYF,IEF,DBP)
 PW VICTOR BOOMER P606 (SOD)(DLF,HYF,IEF,MDF)
 MSU TCF RACHAEL ET 54N (DLF,HYF,IEF,DBP)
 TH 122711 VICTOR 719T (SOD)(DLF,HYF,IEF,MSUDF,MDF,DBF)
 ABRA 225 MILEY 22X (DLF,HYF,IEF,DBP)
 PW VICTOR BOOMER P606 (SOD)(DLF,HYF,IEF,MDF)
 WAT LADY PEARL 38T (HYP,MSUDF)

BMSI	360																	
BIIS	438	CE	BW	WW	YW	DMI	SC	SCF	MM	M&G	MCE	MCW	UDDR	TEAT	CW	FAT	REA	MARB
CHBS	106	4.5	2.3	68	101	0.6	1.8	16.9	28	62	5.6	95	1.30	1.50	73	0.022	0.76	0.04

- A double bred P606 daughter, with a sharp Steadfast heifer calf at side. These are the type of pedigrees you love being able to stack on top of each other. Take advantage of getting two young females for the price of one!
- 10% WW, MCE, REA; 3% SC, TEAT
- Sells open and ready to breed.



17A CLC 156J RACHEL 514H 286M

Cow P44542584 Calved: 3/11/24 Tattoo: RE 286M

NJW 79Z 2311 ENDURE 173D ET (SOD)(CHB)(DLF,HYF,IEF,MSUDF,MDF,DBF)
 NJW 202C173D STEADFAST 156J ET (CHB)(DLF,HYF,IEF,MSUDF,MDF,DBF)
 P44276463 NJW 160Z 8Y HOME MAKER 202C (DLF,HYF,IEF,MSUDF,MDC,DBF)
 CMF 3005 EPIC 384E ET (DLF,HYF,IEF,MDF,DBF)
 WMC 384E 2B RACHAEL 514H ET (DLF,HYF,IEF,MSUDF,MDF,DBF)
 P44224085 WMC 17Z FANCY VICTOR 2B (DOD)(DLF,HYF,IEF,MSUDF,MDF,DBF)

KCF BENNETT ENCORE Z311 ET (SOD)(CHB)(DLF,HYF,IEF,MSUDF,MDF,DBF)
 BW 91H 100W RITA 79Z ET (DLF,HYF,IEF,MSUDF,MDF)
 NJW 73S W18 HOMEGROWN 8Y ET (SOD)(DLF,HYF,IEF,MSUDF,MDC,DBF)
 NJW 73S 88X DAYDREAM 160Z (DOD)(DLF,HYF,IEF,MSUDF,MDF)
 R LEADER 6964 (SOD)(DLF,HYF,IEF,MSUDF,DBF)
 GRASSY RUN RACHEL 3005ET (DLF,HYF,IEF,MSUDF,DBP)
 ABRA 719T RANSUM 17Z (DLF,HYF,IEF,MSUDF,DBP)
 WMC BOOMERS PEARL 10Z (DOD)(DLF,HYF,IEF,MSUDF)

BMSI	440																	
BIIS	527	CE	BW	WW	YW	DMI	SC	SCF	MM	M&G	MCE	MCW	UDDR	TEAT	CW	FAT	REA	MARB
CHBS	143	5.0	2.3	65	101	0.4	1.8	20.4	32	65	2.6	106	1.40	1.45	87	0.042	0.83	0.17



WHR 845C 592F Beefmaker 697J

Ref WHR 845C 592F BEEFMAKER 697J (DLF,HYF,IEF,MSUDF,MDF,DBF)

Sire P44222854 Calved: 2/7/21 Tattoo: BE 697J

UPH PROSPECTOR P152 (SOD)(DLF,HYF,IEF)
 WHITEHAWK WARRIOR 845C ET (SOD)(CHB)(DLF,HYF,IEF,MSUDF,MDF)
 P43566921 GRANDVIEW CMR 4003 BETH Y115ET (DLF,HYF,IEF)
 INNISFAIL WHR X651/723 4013 ET (CHB)(DLF,HYF,IEF,MSUDF,MDF)
 WHR 4013 216Y BEEFMAID 592F ET (DLF,HYF,IEF,MSUDF,MDF,DBF)
 P43937070 WHITEHAWK 2328 BEEFMAID 216Y (DLF,HYF,IEF,MSUDF,DBP)

HUTH PROSPECTOR K085 (SOD)(DLF,HYF,IEF)
 UPH MANDY M863 (HYP)
 GRANDVIEW VIC H132 236 4003 ET (DLF,HYF,IEF)
 DJB 46B BETH 1L (DLF,HYF,IEF,MSUDF)
 EFBEEF TFL U208 TESTED X651 ET (SOD)(CHB)(DLF,HYF,IEF,MSUDF)
 INNISFAIL P230 T723 (DLF,HYF,IEF,MSUDF)
 WHITEHAWK 4R REVOLUTION 2328 (SOD)(CHB)(DLF,HYF,IEF,DBP)
 DH MISS ADVANCE 8154 (IEP)

BMSI	425																	
BIIS	533	CE	BW	WW	YW	DMI	SC	SCF	MM	M&G	MCE	MCW	UDDR	TEAT	CW	FAT	REA	MARB
CHBS	153	3.0	3.0	79	122	1.1	1.8	19.3	37	77	5.6	101	1.20	1.20	96	0.032	0.79	0.29

- 697J was the top selling bull from the 2021 White Hawk Ranch bull sale. Owned by friends of ours at Laneview Farms in Kenton, Tenn. We love the cow families, carcass, and genotype 697J is able to inject into a calf crop.
- 10% MCE, BI, CHB; 5% MM, REA; 1% WW, YW, SC, MG, CW
- Homozygous Polled.



- Don't overlook this heifer just because she is so young! 273L has been an eyecatcher from day one and without a doubt will change a lot more from picture day to sale day.
- 10% MG, TEAT, BII, BMI, SCF

Lot 18A — CLC 87G Manifest 2098 273L

18 **WF LADY FRONTIER T124 2098 ET** (DLF,HYF,IEF,MSUDF)
Cow **P44037598** Calved: **3/14/19** Tattoo: **RE 2098**

TH 403A 475Z PIONEER 358C ET (SOD)(DLF,HYF,IEF,MSUDF) TH 89T755T STOCKMAN 475Z (SOD)(DLF,HYF,IEF)
 TH FRONTIER 174E (SOD)(DLF,HYF,IEF,MSUDF,MDF) TH 71U17Y RITA 403A (DLF,HYF,IEF)
 P43818822 FTF TRUSTING LADY 312A (DLF,HYF,IEF) NJW 73S M326 TRUST 100W ET (SOD)(CHB)(DLF,HYF,IEF,MSUDF,MDF,DBF)
 FTF BOOM AND BLOOM 821U (DLF,HYF,IEF)
 GO L18 EXCEL N40 GO EXCEL L18 (SOD)(DLF,HYF,IEF)
GO MS PJ EXCEL T124 (DLF,HYF,IEF,MSUDF) GO MS 293 MARK DOM L57 (DLF,HYF,IEF)
 42792236 GO MS 293 MARK DOM 0084 (DOD)(DLPHYP) GO MARK DOMINO 8293 (SOD)(HYP)
 GO MS MARK DOMINO 7072 (DLPHYP)

BMSI	397																	
BII\$	465	CE	BW	WW	YW	DMI	SC	SCF	MM	M&G	MCE	MCW	UDDR	TEAT	CW	FAT	REA	MARB
CHBS	115	2.6	2.7	62	104	0.1	1.0	18.7	36	67	1.0	104	1.20	1.30	77	0.032	0.66	-0.08

- A dark red, big framed Frontier 174E daughter who is uniquely bred on the bottom side out of a cow stemming from the George Oshner program in Torrington, Wyo. 2098 has always consistently made the right type of calves. The young heifer at her side is no different this time.
- 8% MM, MG
- Pasture exposed from 1/10/24 to 4/3/24 to NJW Manifest 87G.

18A **CLC 87G MANIFEST 2098 273L**
Cow **P44542583** Calved: **1/5/24** Tattoo: **RE 273L**

/S MANDATE 66589 ET (DLF,HYF,IEF,MSUDF,MDF,DBF) R LEADER 6964 (SOD)(DLF,HYF,IEF,MSUDF,DBF)
 NJW 133A 6589 MANIFEST 87G ET (DLF,HYF,IEF,MSUDF,MDF,DBF) /S LADY DOMINO 0158X (DLF,HYF,IEF)
 P44057384 BW NJW 76S 8Y HOMESPUN 133A (DLF,HYF,IEF,MSUDF,MDF) NJW 73S W18 HOMETOWN 10Y ET (SOD)(CHB)(DLF,HYF,IEF,MSUDF,MDF)
 NJW 55N STARDUST 76S (DLF,HYF,IEF,MSUDF,MDF)
 TH FRONTIER 174E (SOD)(DLF,HYF,IEF,MSUDF,MDF) TH 403A 475Z PIONEER 358C ET (SOD)(DLF,HYF,IEF,MSUDF)
WF LADY FRONTIER T124 2098 ET (DLF,HYF,IEF,MSUDF) FTF TRUSTING LADY 312A (DLF,HYF,IEF)
 P44037598 GO MS PJ EXCEL T124 (DLF,HYF,IEF,MSUDF) GO L18 EXCEL N40
 GO MS 293 MARK DOM 0084 (DOD)(DLPHYP)

BMSI	458																	
BII\$	541	CE	BW	WW	YW	DMI	SC	SCF	MM	M&G	MCE	MCW	UDDR	TEAT	CW	FAT	REA	MARB
CHBS	115	6.9	1.2	64	105	0.3	1.4	23.4	33	65	1.9	111	1.35	1.40	74	0.062	0.48	0.06



Lot 18 — WF Lady Frontier T124 2098 ET



Lot 19 — CLC 87G Manifesto 982 212L

19 Cow CLC 87G MANIFESTO 982 212L

P44542571

Calved: 10/5/23

Tattoo: RE 212L

/S MANDATE 66589 ET (DLF,HYF,IEF,MSUDF,MDF,DBF)
 NJW 133A 6589 MANIFEST 87G ET (DLF,HYF,IEF,MSUDF,MDF,DBF)
 P44057384 BW NJW 76S 8Y HOMESPUN 133A (DLF,HYF,IEF,MSUDF,MDF)

R LEADER 6964 (SOD)(DLF,HYF,IEF,MSUDF,DBF)
 /S LADY DOMINO 0158X (DLF,HYF,IEF)
 NJW 73S W18 HOMETOWN 10Y ET (SOD)(CHB)(DLF,HYF,IEF,MSUDF,MDF)
 NJW 55N STARDUST 76S (DLF,HYF,IEF,MSUDF,MDF)

CRR 028X SENSATION 704 (DLF,HYF,IEF,MSUDF)
 SLF 1751 MS 704 982
 P44178474 SLF 1415 MS 1407 1751

CHURCHILL SENSATION 028X (SOD)(DLF,HYF,IEF,MDF,DBF)
 CRR 322 AMBER 527 (DLF,HYF,IEF,MSUDF)
 SLF 28U SIR P124 1407 (DLF,HYF,IEF,MSUDF,MDF,DBF)
 SLF 570 MISS 0082 1415

BMI\$	487																	
BII\$	573	CE	BW	WW	YW	DMI	SC	SCF	MM	M&G	MCE	MCW	UDDR	TEAT	CW	FAT	REA	MARB
CHBS	111	7.9	0.7	59	92	0.3	1.5	25.9	34	63	3.5	89	1.40	1.50	67	0.057	0.36	0.15

• Don't overlook this 87G daughter just because she is selling by her lonesome. We are retaining her mother, but really wanted to have a great representation of our herd sire within this sale so we dug a little deeper and decided to offer up this young brute of a heifer calf. With quality udders, great pigment, and tons of rib for her at such a young age she is one I think, is easy to be attracted by.

• 10% SC, UDDER; 5% SCF, TEAT, BI, BMI



UPS Miss Mighty 9090 — Dam of Lots 20 & 21

20 FOUR (4) CONVENTIONAL EMBRYOS

H B DISTINCT (CHB)(DLF,HYF,IEF,MSUDF,MDF,DBF)
 HUTH CLC WF DELUXE KO16 (DLF,HYF,IEF,MSUDF,MDF,DBF)
 P44370488 HUTH F035 MANDY H029 (DLF,HYF,IEF,MSUDF,MDF)

NJW 160B 028X HISTORIC 81E ET (DLF,HYF,IEF,MSUDF,MDF,DBF)
 H DS MISS SPICE 8082 (DLF,HYF,IEF,MSUDF,MDF,DBF)
 /S MANDATE 66589 ET (DLF,HYF,IEF,MSUDF,MDF,DBF)
 HUTH 2024 MS EXEDE F035 (DOD)(DLF,HYF,IEF,MSUDF,MDF)

NJW 79Z 22Z MIGHTY 49C ET (SOD)(DLF,HYF,IEF,MSUDF,MDF)
 UPS MISS MIGHTY 9090 (DLF,HYF,IEF,MSUDF,MDF)
 P44045505 UPS MISS SUMMIT 6082 (MSUDP,MDF)

NJW 67U 28M BIG MAX 22Z (DLF,HYF,IEF,MDF)
 BW 91H 100W RITA 79Z ET (DLF,HYF,IEF,MSUDF,MDF)
 KCF BENNETT SUMMIT B261 ET (SOD)(CHB)(DLF,HYF,IEF,MSUDF)
 UPS MISS HOMESTEAD 4124 (MSUDP,MDF)

BMI\$	525	SIRE																
BII\$	631	CE	BW	WW	YW	DMI	SC	SCF	MM	M&G	MCE	MCW	UDDR	TEAT	CW	FAT	REA	MARB
CHBS	181	8.4	1.8	85	141	1.1	1.7	23.7	43	85	-1.8	151	1.50	1.50	120	0.062	1.25	0.16



BMI\$	420	DAM																
BII\$	496	CE	BW	WW	YW	DMI	SC	SCF	MM	M&G	MCE	MCW	UDDR	TEAT	CW	FAT	REA	MARB
CHBS	126	4.3	4.0	64	101	0.5	1.2	19.9	31	63	1.6	100	1.40	1.40	84	0.032	0.79	0.04



BK Red River H18 ET — Sire of Lot 21

21 FOUR (4) IVF EMBRYOS

H THE PROFIT 8426 ET (DLF,HYF,IEF,MSUDF,MDF,DBF)
 BK RED RIVER H18 ET (DLF,HYF,IEF,MSUDF,MDF,DBF)
 P44249335 HAPP KOOL AID POINTS 1218 ET (DLF,HYF,IEF,MDF,DBF)

CHURCHILL PILGRIM 632D ET (SOD)(DLF,HYF,IEF,MSUDF,MDF,DBF)
 RST GAT NSTY79D LADY 54B ET (DLF,HYF,IEF,MSUDF,MDF,DBF)
 DELHAWK KAHUNA 1009 ET (DLF,HYF,IEF)
 CRANE STYLE POINTS 945 (DLF,HYF,IEF,DBP)

NJW 79Z 22Z MIGHTY 49C ET (SOD)(DLF,HYF,IEF,MSUDF,MDF)
 UPS MISS MIGHTY 9090 (DLF,HYF,IEF,MSUDF,MDF)
 P44045505 UPS MISS SUMMIT 6082 (MSUDP,MDF)

NJW 67U 28M BIG MAX 22Z (DLF,HYF,IEF,MDF)
 BW 91H 100W RITA 79Z ET (DLF,HYF,IEF,MSUDF,MDF)
 KCF BENNETT SUMMIT B261 ET (SOD)(CHB)(DLF,HYF,IEF,MSUDF)
 UPS MISS HOMESTEAD 4124 (MSUDP,MDF)

BMI\$	314	SIRE																
BII\$	386	CE	BW	WW	YW	DMI	SC	SCF	MM	M&G	MCE	MCW	UDDR	TEAT	CW	FAT	REA	MARB
CHBS	111	2.5	2.9	56	100	1.0	0.9	14.6	25	53	-0.2	84	1.30	1.30	70	0.002	0.63	0.15



BMI\$	420	DAM																
BII\$	496	CE	BW	WW	YW	DMI	SC	SCF	MM	M&G	MCE	MCW	UDDR	TEAT	CW	FAT	REA	MARB
CHBS	126	4.3	4.0	64	101	0.5	1.2	19.9	31	63	1.6	100	1.40	1.40	84	0.032	0.79	0.04





DCR 376 Ella 9205 ET — Dam of Lot 22



NJW 73S 10W Daydream 13F ET — Dam of Lot 23

22 FOUR (4) IVF HEIFER SEXED EMBRYOS

UPS SENSATION 2296 ET (SOD)(DLFHYFJEFMSUDF,DFB) **KLD RW MARKSMAN D87 ET** (DLFHYFJEFMSUDF,DFB)
P43951713 RW MINDY 3078 6096 (DLFHYFJEFMSUDF)

CHURCHILL SENSATION 028X (SOD)(DLFHYFJEFMSUDF,DFB) **UPS JT MISS NEON 7811 IET** (DLFHYFJEF,DFB)
RW KW HUMMER K23 3078 (DLFHYFJEF)
RW DEDE 23C 9145 (HYP)

DCR 136X DEPENDABLE 376 (DLFHYFJEF) **DCR 376 ELLA 9205 ET** (DLFHYFJEFMSUDF,DFB)
P44180171 DCR 199B ELLA 6358 ET (DLFHYFJEFMSUDF,DFB)

NJW 12E 4037 DURATION 136X ET (DLFHYFJEF) **DCR 7006 MISS DAISY 9037** (HYP)
NJW 78P 88X COWBOSS 199B ET (DLFHYFJEF,DFB)
DCR 722 ELLA C 0119 (DLFHYFJEFMSUDF,DFB)

BMI\$	373	SIRE																
BII\$	434	CE	BW	WW	YW	DMI	SC	SCF	MM	M&G	MCE	MCW	UDDR	TEAT	CW	FAT	REA	MARB
CHBS	100	-2.1	5.2	54	86	0.0	0.6	18.0	34	60	-3.7	88	1.20	1.30	66	0.032	0.61	-0.04



BMI\$	362	DAM																
BII\$	420	CE	BW	WW	YW	DMI	SC	SCF	MM	M&G	MCE	MCW	UDDR	TEAT	CW	FAT	REA	MARB
CHBS	96	3.4	1.9	43	67	0.2	0.7	18.2	22	44	0.6	83	1.40	1.40	66	0.062	0.34	0.04



RMB RL6964 Southern Belle 618G — Dam of Lot 24



Walker JH Dance X51 2042 675D — Dam of Lot 25

24 FOUR (4) CONVENTIONAL EMBRYOS

H B DISTINCT (CHB)(DLFHYFJEFMSUDF,DFB) **HUTH CLC WF DELUXE KO16** (DLFHYFJEFMSUDF,DFB)
P44396136 HUTH F035 MANDY H029 (DLFHYFJEFMSUDF,DFB)

NJW 160B 028X HISTORIC 81E ET (DLFHYFJEFMSUDF,DFB) **H DS MISS SPICE 8082** (DLFHYFJEFMSUDF,DFB)
/S MANDATE 66589 ET (DLFHYFJEFMSUDF,DFB)
HUTH 2024 MS EXEDE F035 (DOD)(DLFHYFJEFMSUDF,DFB)

R LEADER 6964 (SOD)(DLFHYFJEFMSUDF,DFB) **RMB RL6964 SOUTHERN BELLE 618G** (DLFHYFJEFMSUDF,DFB)
P43996136 WHITEHAWK 342 BEEFMAID 96XET (DLFHYFJEF)

HYALITE ON TARGET 936 (SOD)(DLFHYFJEFMSUDF,DFB) **R MISS REVOLUTION 1009** (DOD)(DLFHYFJEF,DFB)
KCF BENNETT M326 S342 (CHB)(DLFHYFJEF,DFB)
KCF MISS 9126J T39 (DLFHYFJEF)

BMI\$	525	SIRE																
BII\$	631	CE	BW	WW	YW	DMI	SC	SCF	MM	M&G	MCE	MCW	UDDR	TEAT	CW	FAT	REA	MARB
CHBS	181	8.4	1.8	85	141	1.1	1.7	23.7	43	85	-1.8	151	1.50	1.50	120	0.062	1.25	0.16



BMI\$	369	DAM																
BII\$	452	CE	BW	WW	YW	DMI	SC	SCF	MM	M&G	MCE	MCW	UDDR	TEAT	CW	FAT	REA	MARB
CHBS	135	4.6	2.2	63	105	0.6	1.1	16.5	24	56	2.2	101	1.30	1.30	88	0.072	0.64	0.15



25 FOUR (4) IVF EMBRYOS

UPS ENTICE 9365 ET (CHB)(DLFHYFJEFMSUDF,DFB) **JDH AH 45C INCEPTION 76J ET** (DLFHYFJEFMSUDF,DFB)
P44242717 JDH AH MS 34X VICTOR 33245C ET (DLFHYFJEFMSUDF,DFB)

NJW 79Z 2311 ENDURE 173D ET (SOD)(CHB)(DLFHYFJEFMSUDF,DFB) **UPS MISS SENSATION 2277 ET** (DLFHYFJEFMSUDF,DFB)
JDH VICTOR 719T 33Z ET (SOD)(CHB)(DLFHYFJEFMSUDF,DFB)
AH JDH MS 25L WRANGLER 34X ET (DOD)(DLFHYFJEF)

KCF BENNETT REVOLUTION X51 (SOD)(CHB)(DLFHYFJEFMSUDF,DFB) **WALKER JH DANCE X51 2042 675D** (DLFHYFJEFMSUDF,DFB)
P43688034 CKP 138X DANCE 2042 (DLFHYFJEF)

MSU TCF REVOLUTION 4R (SOD)(DLFHYFJEFMSUDF,DFB) **KCF MISS PROFICIENT U201** (DLFHYFJEFMSUDF,DFB)
SB 54E 75R FUSION 138X ET (DLFHYFJEF)
CKP DANCE 0063 (DLFHYFJEFMSUDF)

BMI\$	466	SIRE																
BII\$	586	CE	BW	WW	YW	DMI	SC	SCF	MM	M&G	MCE	MCW	UDDR	TEAT	CW	FAT	REA	MARB
CHBS	206	-0.2	4.0	80	124	0.6	2.2	19.0	38	78	1.5	106	1.50	1.30	112	0.032	0.84	0.48



BMI\$	528	DAM																
BII\$	621	CE	BW	WW	YW	DMI	SC	SCF	MM	M&G	MCE	MCW	UDDR	TEAT	CW	FAT	REA	MARB
CHBS	163	2.2	4.4	66	108	0.5	1.1	25.4	33	66	2.3	100	1.70	1.80	91	-0.028	1.00	0.24



26

PICK OF THE 2023 CHAPMAN LAND & CATTLE FALL CROP

Pick

- We think this is a great chance to tap into some leading genetics that are combination of all the main fundamentals of the Hereford breed as well as extreme phenotype, genotype, and marketability. We are excited to see what the selection brings to someone else's operation in the future. Below are just some of the females whose offspring will be offered within this selection. For more information, please reach out.
- Retaining the right to two (2) flushes of a minimum of six (6) freezable grade one embryos each at the buyer's convenience, and the seller's expense.
- Selection must be made by August 1, 2024.



NJW 11B 81E Rita 24H ET



WHR 4013 820C Beefmaid 659F



77 MISS Ellison 16E 80F



DCR 376 Ella 9205 ET



NJW P606 72N Daydream 73S



RHF 38W Lady Yetta 8144F ET



Lot 27 — Huth CLC WF Deluxe K016

27
Bull

HUTH CLC WF DELUXE K016 {DLF,HYF,IEF,MSUDF,MDF,DBF}

P44370488 Calved: **4/24/22** Tattoo: **RE HUTH/LE K016**

NJW 160B 028X HISTORIC 81E ET {DLF,HYF,IEF,MSUDF,MDF,DBF}

HB DISTINCT {CHB}{DLF,HYF,IEF,MSUDF,MDF,DBF}

P44184682 H DS MISS SPICE 8082 {DLF,HYF,IEF,MSUDF,MDF,DBF}



/S MANDATE 66589 ET {DLF,HYF,IEF,MSUDF,MDF,DBF}

HUTH F035 MANDY H029 {DLF,HYF,IEF,MSUDF,MDF}

P44189452 HUTH Z024 MS EXEDE F035 {DOD}{DLF,HYF,IEF,MSUDF,MDF}

CHURCHILL SENSATION 028X {SOD}{DLF,HYF,IEF,MDF,DBF}

NJW 73S 38W DAYDREAM 160B {DLF,HYF,IEF,MSUDF}

LCX PERFECTO 11B ET {DLF,HYF,IEF,MSUDF}

H BL MISS SPICE 613 ET {DLF,HYF,IEF,MSUDF,DBF}

R LEADER 6964 {SOD}{DLF,HYF,IEF,MSUDF,DBF}

/S LADY DOMINO 0158X {DLF,HYF,IEF}

MOHICAN THM EXCEDE Z426 {SOD}{DLF,HYF,IEF,MSUDF,MDF,DBF}

HUTH X088 DOMINETTE Z024 {DOD}{DLF,HYF,IEF}

- Our newest herd sire who is a true multipurpose tool that can improve a herd in more ways than one! When former AHA fieldman Noah Benedict called us about this bull we knew this was the kind we had been searching for. K016 is dark red, heavily pigmented, soft made, with excellent rib shape; not to mention being homo polled and an extreme EPD spread ranking in the top 1% in ten areas, as well as the top 3% in another three. It's hard to find a bull with this kind of phenotype, color, genotype, and carcass it is truly a DELUXE PACKAGE!

- Homozygous Polled.
- We are excited to welcome and own this unique herd sire with our newest partners, Whispering Winds Farm, we look forward to a prosperous and exciting partnership together.
- Selling five (5) packages of five (5) units of semen.
- Please inquire if interested in large packages.

BMI\$	525																	
BIIS	631	CE	BW	WW	YW	DMI	SC	SCF	MM	M&G	MCE	MCW	UDDR	TEAT	CW	FAT	REA	MARB
CHBS	181	8.4	1.8	85	141	1.1	1.7	23.7	43	85	-1.8	151	1.50	1.50	120	0.062	1.25	0.16



LOTS 28 - 32



WOOLFOLK FARMS
131 Hallie Anderson Rd.
Jackson, TN 38305

Scott Woolfolk
731-571-7399

Johnny Woolfolk
731-225-2620

John Thomas Woolfolk
731-345-1585



Lot 28 — WF 9024 Power Lady 2084 2462

28 WF 9024 POWER LADY 2084 2462

Cow

44448086

Calved: 10/2/22

Tattoo: RE 2462

BOYD 31Z BLUEPRINT 6153 (DLF,HYF,IEF,MSUDF,MDF,DBF)
BOYD POWER SURGE 9024 (DLF,HYF,IEF,MSUDF,MDF,DBF)
P44004782 TH 329 358C LANA 76E (DLF,HYF,IEF,MSUDF,MDF,DBF)

R LEADER 6964 (SOD)(CHB)(DLF,HYF,IEF,MSUDF,DBF)
NJW 91H 100W RITA 31Z ET (DLF,HYF,IEF)
TH 403A 475Z PIONEER 358C ET (SOD)(DLF,HYF,IEF,MSUDF)
FTF 7227 MS LOGIC 329A (DLF,HYF,IEF)

NJW 73S W18 HOMETOWN 10Y ET (SOD)(CHB)(DLF,HYF,IEF,MSUDF,MDF)
WF 10Y LAST CHANCE T137 2084ET (MDF)
P44036903 GO MS PJ EXCEL T137 (DLF,HYF,IEF,MSUDF)

SHF WONDER M326 W18 ET (SOD)(CHB)(DLF,HYF,IEF,MDF,DBF)
NJW P606 72N DAYDREAM 73S (DLF,HYF,IEF,MSUDF,MDF)
GO L18 EXCEL N40
GO MS 205 EXCEL M72 (HYF)

BMI\$	388																	
BII\$	460	CE	BW	WW	YW	DMI	SC	SCF	MM	M&G	MCE	MCW	UDDR	TEAT	CW	FAT	REA	MARB
CHBS	112	5.4	3.2	61	97	0.4	1.3	18.9	32	62	0.9	87	1.30	1.30	76	0.012	0.47	0.00

- An absolute juggernaut of female with tons of shape, muscle, and just overall punch. 2462 is a great representation of the farm and resembles her grandmother Lana 76E. Her 7/8 sister was the top selling female in the inaugural Appalachian Elite female sale back in 2021.
- Bred to Huth CLC WF Deluxe K016 breeding information available on sale day.

29 WF 332A SWEET HOME 4071 2430 (DLF,HYF,IEF,MSUDF)

Cow

P44339752

Calved: 11/19/21

Tattoo: RE 2430

NJW 73S W18 HOMETOWN 10Y ET (SOD)(CHB)(DLF,HYF,IEF,MSUDF,MDF)
ILR HOMETOWN 332A ET (DLF,HYF,IEF,MSUDF,MDF)
P43385499 NJW 43T 4037 FOREVER EDNA 28X ET (DLF,HYF,IEF)



H W4 LIGHTS OUT 2015 ET (SOD)(CHB)(DLF,HYF,IEF)
HWR 5017 SWEET SALLY 4071 ET (DLF,HYF,IEF,MSUDF)
43487542 K&B SWEET SALLY 5017 (DOD)(DLF,HYF,IEF)

SHF WONDER M326 W18 ET (SOD)(CHB)(DLF,HYF,IEF,MDF,DBF)
NJW P606 72N DAYDREAM 73S (DLF,HYF,IEF,MSUDF,MDF)
THM DURANGO 4037 (SOD)(DLF,HYF,IEF)
NJW FOREVER RADIANT 43T ET (DLF,HYF,IEF)

CL 1 DOMINO 955W (SOD)(DLF,HYF,IEF)
C MS PURE GOLD 2003 (DLF,HYF,IEF)
PW VICTOR BOOMER P606 (SOD)(DLF,HYF,IEF,MDF)
K&B MAXINE 3235 (IEF)

BMI\$	375																	
BII\$	433	CE	BW	WW	YW	DMI	SC	SCF	MM	M&G	MCE	MCW	UDDR	TEAT	CW	FAT	REA	MARB
CHBS	124	-2.0	3.9	48	86	0.2	1.0	17.1	34	58	0.0	86	1.20	1.20	74	-0.018	0.74	0.04

- A very well-made powerful 332A daughter who on the bottom side stems back to the breed great K&B Sweet Sally 5017 donor cow. Look for this female to be a great producer for years to come.
- 10% MM, REA
- Bred AI on 12/4/23 to Huth Deluxe K016, then pasture exposed from 12/10/23 to 4/3/24 to NJW Blueprint 82K.



Lot 29 — WF 332A Sweet Home 4071 2430





Lot 30 — WF 174E Frontier 9779 2466



“Deluxe K016”

30 WF 174E FRONTIER 9779 2466 {DBP}
Cow P44448162 Calved: 10/3/22 Tattoo: RE 2466

TH 403A 475Z PIONEER 358C ET {SOD}{DLF,HYF,IEF,MSUDF} TH 89T 755T STOCKMAN 475Z {SOD}{DLF,HYF,IEF}
 TH FRONTIER 174E {SOD}{DLF,HYF,IEF,MSUDF,MDF} TH 71U 17Y RITA 403A {DLF,HYF,IEF}
 P43818822 FTF TRUSTING LADY 312A {DLF,HYF,IEF} NIW 73S M326 TRUST 100W ET {SOD}{CHB}{DLF,HYF,IEF,MSUDF,MDF,DBF}
 FTF BOOM AND BLOOM 8211U {DLF,HYF,IEF}

LCX PERFECTO 11B ET {DLF,HYF,IEF,MSUDF} NIW 98S R117 RIBEYE 88X ET {SOD}{DLF,HYF,IEF,MSUDF,MDF,DBF}
 H KATIE 9779 {DBP} WLL ZOEY 3Z {DLF,HYF,IEF,MDF,DBF}
 P44120774 CHURCHILL LADY 7266E ET {DOD}{DBP} BR NITRO AVENTUS 3116 ET {DLF,HYF,IEF,DBP}
 LCCTG BE MY MERRY TIME 7B ET {DLF,HYF,IEF,MSUDF}

BMSIS	430																	
BIIS	510	CE	BW	WW	YW	DMI	SC	SCF	MM	M&G	MCE	MCW	UDDR	TEAT	CW	FAT	REA	MARB
CHBS	109	5.3	2.2	72	114	0.4	1.1	21.3	40	76	1.7	108	1.20	1.10	74	0.032	0.62	-0.05

- A dark red, goggle eyed female, who is extreme on many different levels. With a tremendous spring of rib, lots of meat, and a great set of bone on her. 2466 will turn heads on sale day!
- Will be DB tested by sale day.
- 5% WW, YW; 1% MM, MG
- Bred to Huth CLC WF Deluxe K016, breeding information available on sale day.



Lot 31 — WF 0016 Fine Print 8144 2512ET

- 2512 is just full of tremendous cow families. Out of the popular sire, RST Final Print, and on the bottom side being a direct daughter of our Beef 38W 8144 F donor, we believe this is one that you will be wise to jump in on early.
- 10% BW, BMI, BII; 5% SCF, MCE, TEAT; 1% UDDER
- Bred to Huth CLC WF Deluxe K016, breeding information available on sale day.

31 WF 0016 FINE PRINT 8144 2512ET (DLF,HYF,IEF,MSUDF)

44448082 Calved: 12/18/22 Tattoo: RE 2512

BOYD 31Z BLUEPRINT 6153 (DLF,HYF,IEF,MSUDF,MDF,DBF)
RST FINAL PRINT 0016 (CHB)(DLF,HYF,IEF,MSUDF,MDF)
 P44178105 **RST MS X651 TESTED 8032** (DLF,HYF,IEF,MSUDF,MDF,DBF)
NJW 76S P20 BEEF 38W ET (SOD)(DLF,HYF,IEF,MSUDF,MDF)
 P44060419 **RHF 38W LADY YETTA 8144F ET** (DLF,HYF,IEF,MSUDF)
R LEADER 6964 (SOD)(DLF,HYF,IEF,MSUDF,DBF)
NJW 91H 100W RITA 31Z ET (DLF,HYF,IEF)
EFBEEF TFL U208 TESTED X651 ET (SOD)(CHB)(DLF,HYF,IEF,MSUDF)
RST MS 0124 TIMESAWASTIN 6094 (DLF,HYF,IEF,MSUDP)
SHF PROGRESS P20 (SOD)(DLF,HYF,IEF,MDF,DBF)
NJW 55N STARDUST 76S (DLF,HYF,IEF,MSUDF,MDF)
STAR 8006 ENVETO 163M ET (SOD)(DLF,HYF,IEF)
THM VICTORIA 2131 (HYP)

BMI\$	448																	
BII\$	538	CE	BW	WW	YW	DMI	SC	SCF	MM	M&G	MCE	MCW	UDDR	TEAT	CW	FAT	REA	MARB
CHBS	119	5.5	0.6	63	97	0.4	1.2	22.9	29	60	6.7	84	1.50	1.50	69	0.032	0.37	0.20

32 WF LADY MERIT 8144F 2488 ET (DLF,HYF,IEF,MSUDF)

P44448170 Calved: 10/26/22 Tattoo: RE 2488

JW X651 TESTED 1857 ET (CHB)(DLF,HYF,IEF,MSUDF,MDF)
JW 1857 MERIT 21134 (DLF,HYF,IEF,MSUDF,MDF,DBF)
 P44212986 **JW 33Z VICTORIA 19027** (DLF,HYF,IEF,MSUDF)
NJW 76S P20 BEEF 38W ET (SOD)(DLF,HYF,IEF,MSUDF,MDF)
 P44060419 **RHF 38W LADY YETTA 8144F ET** (DLF,HYF,IEF,MSUDF)
EFBEEF TFL U208 TESTED X651 ET (SOD)(CHB)(DLF,HYF,IEF,MSUDF)
KCF MISS 22S A261 (DLF,HYF,IEF,MSUDF)
JDH VICTOR 719T 33Z ET (SOD)(CHB)(DLF,HYF,IEF,MSUDF,DBF)
JW 028X DOMINETTE 1417 (DLF,HYF,IEF)
SHF PROGRESS P20 (SOD)(DLF,HYF,IEF,MDF,DBF)
NJW 55N STARDUST 76S (DLF,HYF,IEF,MSUDF,MDF)
STAR 8006 ENVETO 163M ET (SOD)(DLF,HYF,IEF)
THM VICTORIA 2131 (HYP)

BMI\$	428																	
BII\$	521	CE	BW	WW	YW	DMI	SC	SCF	MM	M&G	MCE	MCW	UDDR	TEAT	CW	FAT	REA	MARB
CHBS	138	5.0	3.1	69	114	0.7	1.8	20.4	33	67	4.2	106	1.40	1.50	77	-0.028	0.58	0.21



RHF 38W Lady Yetta 8144 ET — Dam of Lots 31 & 32

- Out of new nationally known herd sire, JW Merit, 2488 is such a rare blend of cow families, as well as carcass profile.
- 10% WW, MG, UDDER, TEAT, BMI, BII; 5% YW, SC
- Bred to Huth CLC WF Deluxe K016, breeding information available on sale day.



Lot 32 — WF Lady Merit 8144F 2488 ET

LOTS 33 - 37



5J CATTLE COMPANY
84 Austin Farm Lane
Clayton, NC 27520

Jody Standley
919-291-4212

Zack Denning
919-608-8882

Will Standley
984-480-9054



Lot 33 — Five Js Fast Vicky 156J L04

33 FIVE JS FAST VICKY 156J L04 (DLF,HYF,IEF,MSUDF,MDF,DBF)

P44513906 Calved: 3/28/23 Tattoo: RE L04

Cow

NJW 79Z 2311 ENDURE 173D ET (SOD)(CHB)(DLF,HYF,IEF,MSUDF,MDF,DBF)
NJW 202C173DSTEADFAST 156J ET (CHB)(DLF,HYF,IEF,MSUDF,MDF,DBF)
 P44276463 NJW 160Z 8Y HOME MAKER 202C (DLF,HYF,IEF,MSUDF,MDF,DBF)



NJW 33TB 100W TRUST 167Y (SOD)(CHB)(DLF,HYF,IEF,MSUDF,MDF)
5J VICKI 167Y 9030 (HYP)
 P4411504 NNF SAVANNA W249 A146 (HYP)

KCF BENNETT ENCORE Z311 ET (SOD)(CHB)(DLF,HYF,IEF,MSUDF,MDF,DBF)
 BW 91H 100W RITA 79Z ET (DLF,HYF,IEF,MSUDF,MDF)
 NJW 73S W18 HOMEGROWN 8Y ET (SOD)(DLF,HYF,IEF,MSUDF,MDF,DBF)
 NJW 73S 88X DAYDREAM 160Z (DOD)(DLF,HYF,IEF,MSUDF,MDF)

NJW 73S M326 TRUST 100W ET (SOD)(CHB)(DLF,HYF,IEF,MSUDF,MDF,DBF)
 BROOKVIEW 242 TEQUILA ROSE 33T (DLF,HYF,IEF)
 KCF BENNETT 774 W249
 MRF MISS COMPLETE X180 (HYP)

- A well balanced perfectly patterned Steadfast female offered by Will Standley. L04 exhibits so many of the traits that drew us to the Steadfast bull originally. Her 167Y mother exhibited the same groundwork, that the rest of our program strives for, with an exquisite teat and udder formation, along with top-notch calf raising ability. Take advantage of this female to capitalize on one of the first Steadfast to be in production.
- 10% Teat, MARB, SC; 5% CHB, REA; 1% BII, BMI
- Sells open and ready to breed.

BMSI	514																	
BII\$	604	CE	BW	WW	YW	DMI	SC	SCF	MM	M&G	MCE	MCW	UDDR	TEAT	CW	FAT	REA	MARB
CHBS	157	6.0	2.2	56	93	0.2	1.5	25.1	28	56	3.7	85	1.30	1.40	81	0.042	0.86	0.33

“Maternal Matters”
Dam of Steadfast



NJW 160Z 8Y Home Maker 202C



Lot 34 — Five Js Lady Lock 163H 201

- A long well-made daughter out of the popular Sleep On bull leased by Select Sires. The dam of this promising young female stems from the Iron Lake program who has had much success.
- 10% TEAT, UDDER; 5% MG; 1% SC, MM
- Bred to Huth CLC WF Deluxe K016, breeding information available on sale day.

34 FIVE JS LADY LOCK 163H 201 (DLF,HYF,IEF,MSUDF)

P44497130 Calved: 9/30/22 Tattoo: RE 201

BAR IZ SLEEP ON 738C (SOD)(DLF,HYF,IEF,MSUDF)
 TH 523F 738C SLEEP ON 163H (DLF,HYF,IEF,MSUDF,MDF,DBF)
 P44140749 TH 4021 358C JEWELL 523F ET (DOD)(DLF,HYF,IEF)



JCS 240 FLINTLOCK 5815 (DLF,HYF,IEF,MSUDF,MDF,DBF)
 ILR FLINTLOCK LADY 811
 P43925592 GMC TRUST LADY 609 ET

HYALITE ON TARGET 936 (SOD)(DLF,HYF,IEF,MSUDC)
 BAR IZ VIRGINIA 500Y (DLF,HYF,IEF,MSUDF)
 TH 403A 475Z PIONEER 358C ET (SOD)(DLF,HYF,IEF,MSUDF)
 INNISFAIL 723 U208 4021 ET (DLF,HYF,IEF,MSUDF)

BAR SLHF 028 240 (SOD)(CHB)(DLF,HYF,IEF)
 LJR MSU WHITNEY 182Z (DOD)(DLF,HYF,IEF,MSUDF)
 NIW 73S M326 TRUST 100W ET (SOD)(CHB)(DLF,HYF,IEF,MSUDF,MDF,DBF)
 E S604 LADY BOOMER W73 (DLF,HYF,IEF)

BMSIS	390																	
BIIS	470	CE	BW	WW	YW	DMI	SC	SCF	MM	M&G	MCE	MCW	UDDR	TEAT	CW	FAT	REA	MARB
CHBS	105	4.0	0.8	55	78	0.1	1.9	19.4	42	69	0.9	97	1.40	1.40	59	0.022	0.13	0.19

35 FIVE JS BETH 163H 207 (DLF,HYF,IEF,MSUDF)

P44497142 Calved: 9/30/22 Tattoo: RE 207

BAR IZ SLEEP ON 738C (SOD)(DLF,HYF,IEF,MSUDF)
 TH 523F 738C SLEEP ON 163H (DLF,HYF,IEF,MSUDF,MDF,DBF)
 P44140749 TH 4021 358C JEWELL 523F ET (DOD)(DLF,HYF,IEF)



NIW 98S R117 RIBEYE 88X ET (SOD)(DLF,HYF,IEF,MSUDF,MDF,DBF)
 ILR 88X LADY BETH 813 (DLF,HYF,IEF,MSUDF,MDF)
 43925593 ILR 156T LADY BETH 623 ET (DLF,HYF,IEF,MSUDF,MDF)

HYALITE ON TARGET 936 (SOD)(DLF,HYF,IEF,MSUDC)
 BAR IZ VIRGINIA 500Y (DLF,HYF,IEF,MSUDF)
 TH 403A 475Z PIONEER 358C ET (SOD)(DLF,HYF,IEF,MSUDF)
 INNISFAIL 723 U208 4021 ET (DLF,HYF,IEF,MSUDF)

SHF RIB EYE M326 R117 (SOD)(CHB)(DLF,HYF,IEF)
 NIW 9126J DEW DOMINO 98S (DOD)(DLF,HYF,IEF)
 CMR GVP MR MATERNAL 156T (SOD)(DLF,HYF,IEF,MSUDF,MDF)
 DJB 46B BETH IL (DLF,HYF,IEF,MSUDF)

BMSIS	337																	
BIIS	422	CE	BW	WW	YW	DMI	SC	SCF	MM	M&G	MCE	MCW	UDDR	TEAT	CW	FAT	REA	MARB
CHBS	143	4.3	1.1	56	86	-0.2	1.0	13.9	38	67	1.0	73	1.30	1.30	65	-0.008	0.30	0.33

- A massive and powerful heifer here sired by popular bull TH Sleep On 163H. This heifer has got tons of bone, tons of extension and lots of width. The bottom side of her pedigree is just absolutely full of legendary cow families as there is 88X, Mr Maternal, and Beth IL herself.
- 10% MG, MARB, CHB; 5% DMI, MM
- Bred to Huth CLC WF Deluxe K016, breeding information available on sale day.



Lot 35 — Five Js Beth 163H 207



- Another Belle Air granddaughter with a diverse bottom side to her pedigree being bred out of the Task program. This female though has a great color with plenty of body very adequate pigment plus a nice pattern from tail to nose.
- 5% MARB
- Bred to Huth CLC WF Deluxe K016, breeding information available on sale day.

Lot 37 — Five Js Lady Belle 19091 215

36 FIVE JS PENNYBELLE 19091 218 (DLF,HYF,IEF,MSUDF)
Cow P44500751 Calved: 11/27/22 Tattoo: RE 218

BR BELLE AIR 6011 (CHB)(DLF,HYF,IEF,MSUDF,DBF) BR BELLE AIR 6011 (CHB)(DLF,HYF,IEF,MSUDF,DBF)
 GENOA 6011 BELLE AIR 19091 (CHB)(DLF,HYF,IEF,MSUDF) BR BELLE 4082 ET (DLF,HYF,IEF,MSUDF)
 P44011891 GENOA MISS HOMETOWN 10Y 15047 (DLF,HYF,IEF,MSUDF,MDF) NJW 73S W18 HOMETOWN 10Y ET (SOD)(CHB)(DLF,HYF,IEF,MSUDF,MOC)
 HYALITE TS LASS 547 (DLP,HYP)
 CHURCHILL MACK 665D ET (DLF,HYF,IEF,MSUDF) NJW 98S R117 RIBEYE 88X ET (SOD)(DLF,HYF,IEF,MSUDF,MDF,DBF)
 PPH PENELOPE F57 (HYP) SR CCC LADYSPORT 2205 Z ET (DLF,HYF,IEF)
 P44045401 PPH PRINCESS 44U Y38 (HYP) NJW 98S DURANGO 44U (SOD)(DLF,HYF,IEF)
 PPH LADY ENVETO U7 (HYP)

BMSIS	429																	
BIIS	522	CE	BW	WW	YW	DMI	SC	SCF	MM	M&G	MCE	MCW	UDDR	TEAT	CW	FAT	REA	MARB
CHBS	137	-0.8	4.0	64	109	0.5	1.7	20.9	27	58	-0.3	88	1.20	1.10	76	0.022	0.40	0.25

37 FIVE JS LADY BELLE 19091 215 (DLF,HYF,IEF,MSUDF)
Cow P44500749 Calved: 11/6/22 Tattoo: RE 215

BR BELLE AIR 6011 (CHB)(DLF,HYF,IEF,MSUDF,DBF) BR BELLE AIR 6011 (CHB)(DLF,HYF,IEF,MSUDF,DBF)
 GENOA 6011 BELLE AIR 19091 (CHB)(DLF,HYF,IEF,MSUDF) BR BELLE 4082 ET (DLF,HYF,IEF,MSUDF)
 P44011891 GENOA MISS HOMETOWN 10Y 15047 (DLF,HYF,IEF,MSUDF,MDF) NJW 73S W18 HOMETOWN 10Y ET (SOD)(CHB)(DLF,HYF,IEF,MSUDF,MOC)
 HYALITE TS LASS 547 (DLP,HYP)
 PLATO MOSSY DOMINO HV320 (DLF,HYF,IEF,MSUDF) PLATO MOSSY DOMINO HV634 (HYP,MSUDP)
 RB LADY TRASK 320 D558 (HYP) PLATO AUSTA HV432 (HYP)
 P43990097 RB MISS TEN 358 593 810 (HYP) RB KING TEN 456 593 (DLF,HYF,IEF)
 RB ROSE TEN S133 358 ET (HYP)

BMSIS	399																	
BIIS	494	CE	BW	WW	YW	DMI	SC	SCF	MM	M&G	MCE	MCW	UDDR	TEAT	CW	FAT	REA	MARB
CHBS	139	1.7	2.3	58	95	0.3	1.0	18.9	20	49	-2.6	90	1.40	1.40	70	0.042	0.36	0.38

- A moderate framed but completely fundamentally, correct Belle Air granddaughter. She looks like a tremendous cow in the making in a young package. This one, once you adjust your eyes, is easy to fall for.
- 10% YW, BII; 2% SC
- Bred to Huth CLC WF Deluxe K016, breeding information available on sale day.



Lot 36 — Five Js Pennybelle 19091 218

LOTS 38 - 43



WHISPERING WINDS FARM
20509 E. Courtney Atherton Rd.
Independence, MO 64058

Brian Mundy
816-668-4521

Jake Mundy
816-313-9488



Lot 38 — DCR 8128 Dominet 3360

38 **DCR 8128 DOMINET 3360** (DBP)
Cow **P44540030** Calved: **9/2/23** Tattoo: **LE 3360**

NJW 79Z Z311 ENDURE 173D ET (SOD)(CHB)(DLFHYFJEFMSUDF,MDF,DBF) KCF BENNETT ENCORE Z311 ET (SOD)(CHB)(DLFHYFJEFMSUDF,MDF,DBF)
 UPS ENDURE 8128 (CHB)(DLFHYFJEFMSUDF,MDF,DBF) BW 91H 100W RITA 79Z ET (DLFHYFJEFMSUDF,MDF)
 P43921729 UPS MISS REVOLUTION 4013 (HYF,DBP) R REVOLUTION 4190 (DLFHYFJEF,DBP)
 UPS MISS TUG 9092 (DOD)(HYF) RST X51 REVOLUTION 4102 (CHB)(DLFHYFJEF)
 HILLS-GALORE 44Z RESOLUTE 128D (CHB)(DLFHYFJEFMSUDF) HILLS-GALORE 52R CALLI 44Z (DLFHYFJEFMSUDF)
 DCR 128D DOMINET 9233 ET (DLFHYFJEFMSUDF) NIW 12E 4037 DURATION 136X ET (DLFHYFJEF)
 P44179998 DCR 136X DOMINET 3021 (DLFHYFJEFMSUDF) DCR 0302 LADY DOM 8047 (HYF)

- Super cow and show prospect to say the very least. 3360 is completely surrounded by top notch maternal producers. Her mother, stemming from the Durbin Creek program exhibits ideal udder quality, precise structural design, and generations of bloodlines signify exactly what the Hereford breed is supposed to be about. Don't miss out on this donor in the making.
- 10% YW, MCE, CW; 5% REA
- Will be DB tested by sale day.
- Lots 38, 40-42 owned with Durbin Creek Ranch.

BMI\$	387																	
BIIS	470	CE	BW	WW	YW	DMI	SC	SCF	MM	M&G	MCE	MCW	UDDR	TEAT	CW	FAT	REA	MARB
CHBS	141	6.0	2.8	63	107	0.7	1.2	17.4	26	58	6.1	100	1.20	1.20	86	0.032	0.76	0.18



DCR 128D Dominet 9233 ET — Dam of Lots 39 & 40

39 **HEIFER CALF PREGNANCY DUE ON 10/9/24**

LOEWEN GENESIS G16 ET (CHB)(DLFHYFJEF,MDF,DBF) NIW 79Z Z311 ENDURE 173D ET (SOD)(CHB)(DLFHYFJEFMSUDF,MDF,DBF)
 KJ GKB 364C IMPACT 249J ET (CHB)(DLFHYFJEFMSUDF,MDF,DBF) LOEWEN 77 48 MISS 344N 4RB42ET (DLFHYF,DBP)
 P44236838 KJ BJ DWE 686Z SALSA 364C ET (DLFHYFJEFMSUDF,MDF,DBF) CRR 719 CATAPULT 109 (SOD)(DLFHYFJEF,MDF)
 KJ 968R ZSA ZSA 686Z ET (DLFHYFJEF,MDF,DBF)
 HILLS-GALORE 44Z RESOLUTE 128D (CHB)(DLFHYFJEFMSUDF) RST X51 REVOLUTION 4102 (CHB)(DLFHYFJEF)
 DCR 128D DOMINET 9233 ET (DLFHYFJEFMSUDF) HILLS-GALORE 52R CALLI 44Z (DLFHYFJEFMSUDF)
 P44179998 DCR 136X DOMINET 3021 (DLFHYFJEFMSUDF) NIW 12E 4037 DURATION 136X ET (DLFHYFJEF)
 DCR 0302 LADY DOM 8047 (HYF)

BMI\$	368	SIRE																
BIIS	470	CE	BW	WW	YW	DMI	SC	SCF	MM	M&G	MCE	MCW	UDDR	TEAT	CW	FAT	REA	MARB
CHBS	168	6.7	1.7	70	113	0.8	1.8	14.6	34	69	3.5	118	1.30	1.20	100	0.092	0.76	0.36



BMI\$	393	DAM																
BIIS	469	CE	BW	WW	YW	DMI	SC	SCF	MM	M&G	MCE	MCW	UDDR	TEAT	CW	FAT	REA	MARB
CHBS	112	2.9	3.7	56	100	0.6	1.0	19.7	22	50	4.3	79	1.30	1.30	69	0.062	0.63	0.14





DCR 376 Ella 9257 ET — Dam of Lots 41 & 42

40 FOUR (4) IVF EMBRYOS

H B DISTINCT (CHB)(DLF,HYF,IEF,MSUDF,MDF,DBF)
HUTH CLC WF DELUXE KO16 (DLF,HYF,IEF,MSUDF,MDF,DBF)
 P44370488 HUTH F035 MANDY H029 (DLF,HYF,IEF,MSUDF,MDF)

NJW 160B 028X HISTORIC 81E ET (DLF,HYF,IEF,MSUDF,MDF,DBF)
 H DS MISS SPICE 808Z (DLF,HYF,IEF,MSUDF,MDF,DBF)
 /S MANDATE 66589 ET (DLF,HYF,IEF,MSUDF,MDF,DBF)
 HUTH Z024 MS EXEDE F035 (DOD)(DLF,HYF,IEF,MSUDF,MDF)

HILLS-GALORE 44Z RESOLUTE 128D (CHB)(DLF,HYF,IEF,MSUDF)
DCR 128D DOMINET 9233 ET (DLF,HYF,IEF,MSUDF)
 P4417998 DCR 136X DOMINET 3021 (DLF,HYF,IEF,MSUDF)

RST X51 REVOLUTION 410Z (CHB)(DLF,HYF,IEF)
 HILLS-GALORE 52R CALLI 44Z (DLF,HYF,IEF,MSUDF)
 NJW 12E 4037 DURATION 136X ET (DLF,HYF,IEF)
 DCR 0302 LADY DOM 8047 (HYP)

BMI\$	525	SIRE																
BIIS	631	CE	BW	WW	YW	DMI	SC	SCF	MM	M&G	MCE	MCW	UDDR	TEAT	CW	FAT	REA	MARB
CHBS	181	8.4	1.8	85	141	1.1	1.7	23.7	43	85	-1.8	151	1.50	1.50	120	0.062	1.25	0.16



BMI\$	393	DAM																
BIIS	469	CE	BW	WW	YW	DMI	SC	SCF	MM	M&G	MCE	MCW	UDDR	TEAT	CW	FAT	REA	MARB
CHBS	112	2.9	3.7	56	100	0.6	1.0	19.7	22	50	4.3	79	1.30	1.30	69	0.062	0.63	0.14



41 FOUR (4) IVF EMBRYOS

H B DISTINCT (CHB)(DLF,HYF,IEF,MSUDF,MDF,DBF)
HUTH CLC WF DELUXE KO16 (DLF,HYF,IEF,MSUDF,MDF,DBF)
 P44370488 HUTH F035 MANDY H029 (DLF,HYF,IEF,MSUDF,MDF)

NJW 160B 028X HISTORIC 81E ET (DLF,HYF,IEF,MSUDF,MDF,DBF)
 H DS MISS SPICE 808Z (DLF,HYF,IEF,MSUDF,MDF,DBF)
 /S MANDATE 66589 ET (DLF,HYF,IEF,MSUDF,MDF,DBF)
 HUTH Z024 MS EXEDE F035 (DOD)(DLF,HYF,IEF,MSUDF,MDF)

DCR 136X DEPENDABLE 376 (DLF,HYF,IEF)
DCR 376 ELLA 9257 ET (DBP)
 P44180201 DCR 199B ELLA 6358 ET (DLF,HYF,IEF,MSUDF,DBP)

NJW 12E 4037 DURATION 136X ET (DLF,HYF,IEF)
 DCR 7006 MISS DAISY 9037 (HYP)
 NJW 78P 88X COWBOSS 199B ET (DLF,HYF,IEF,MDF)
 DCR 722 ELLA C 0119 (DLF,HYF,IEF,MSUDF,DBP)

BMI\$	525	SIRE																
BIIS	631	CE	BW	WW	YW	DMI	SC	SCF	MM	M&G	MCE	MCW	UDDR	TEAT	CW	FAT	REA	MARB
CHBS	181	8.4	1.8	85	141	1.1	1.7	23.7	43	85	-1.8	151	1.50	1.50	120	0.062	1.25	0.16



BMI\$	343	DAM																
BIIS	408	CE	BW	WW	YW	DMI	SC	SCF	MM	M&G	MCE	MCW	UDDR	TEAT	CW	FAT	REA	MARB
CHBS	112	0.1	2.9	49	78	0.2	0.8	15.9	29	54	1.0	83	1.30	1.30	67	0.012	0.44	0.12



KJ GKB 364C Impact 249J ET — Featured Sire

42 FOUR (4) IVF EMBRYOS

LOEWEN GENESIS G16 ET (CHB)(DLF,HYF,IEF,MDF,DBF)
KJ GKB 364C IMPACT 249J ET (CHB)(DLF,HYF,IEF,MSUDF,MDF,DBF)
 P44235838 KJ BJ DWE 686Z SALSA 364C ET (DLF,HYF,IEF,MSUDF,MDF,DBF)

NJW 79Z Z311 ENDURE 173D ET (SOD)(CHB)(DLF,HYF,IEF,MSUDF,MDF,DBF)
 LOEWEN 77 48 MISS 344N 4RB42ET (DLF,HYF,DBP)
 CRR 719 CATAPULT 109 (SOD)(DLF,HYF,IEF,MDF)
 KJ 968R ZSA ZSA 686Z ET (DLF,HYF,IEF,MDF,DBF)

DCR 136X DEPENDABLE 376 (DLF,HYF,IEF)
DCR 376 ELLA 9257 ET (DBP)
 P44180201 DCR 199B ELLA 6358 ET (DLF,HYF,IEF,MSUDF,DBP)

NJW 12E 4037 DURATION 136X ET (DLF,HYF,IEF)
 DCR 7006 MISS DAISY 9037 (HYP)
 NJW 78P 88X COWBOSS 199B ET (DLF,HYF,IEF,MDF)
 DCR 722 ELLA C 0119 (DLF,HYF,IEF,MSUDF,DBP)

BMI\$	368	SIRE																
BIIS	470	CE	BW	WW	YW	DMI	SC	SCF	MM	M&G	MCE	MCW	UDDR	TEAT	CW	FAT	REA	MARB
CHBS	168	6.7	1.7	70	113	0.8	1.8	14.6	34	69	3.5	118	1.30	1.20	100	0.092	0.76	0.36



BMI\$	343	DAM																
BIIS	408	CE	BW	WW	YW	DMI	SC	SCF	MM	M&G	MCE	MCW	UDDR	TEAT	CW	FAT	REA	MARB
CHBS	112	0.1	2.9	49	78	0.2	0.8	15.9	29	54	1.0	83	1.30	1.30	67	0.012	0.44	0.12

43 KJ GKB 364C IMPACT 249J ET (CHB)(DLF,HYF,IEF,MSUDF,MDF,DBF)

Semen

P44235838

Calved: 1/9/21

Tattoo: BE 249J

NJW 79Z Z311 ENDURE 173D ET (SOD)(CHB)(DLF,HYF,IEF,MSUDF,MDF,DBF)
LOEWEN GENESIS G16 ET (CHB)(DLF,HYF,IEF,MDF,DBF)
 P43987463 LOEWEN 77 48 MISS 344N 4RB42ET (DLF,HYF,DBP)

KCF BENNETT ENCORE Z311 ET (SOD)(CHB)(DLF,HYF,IEF,MSUDF,MDF,DBF)
 BW 91H 100W RITA 79Z ET (DLF,HYF,IEF,MSUDF,MDF)
 MSU TCF REVOLUTION 4R (SOD)(DLF,HYF,IEF,MDF,DBC)
 PCR JACKLYN NIKOLE 344N (DLF,HYF,IEF,DBP)

CRR 719 CATAPULT 109 (SOD)(DLF,HYF,IEF,MDF)
KJ BJ DWE 686Z SALSA 364C ET (DLF,HYF,IEF,MSUDF,MDF,DBF)
 P43585785 KJ 968R ZSA ZSA 686Z ET (DLF,HYF,IEF,MDF,DBF)

TH 122 71V VICTOR 719T (SOD)(DLF,HYF,IEF,MSUDF,MDF,DBF)
 CRR 4037 ECLIPSE 808 (DLF,HYF,IEF)
 MSU TCF REVOLUTION 4R (SOD)(DLF,HYF,IEF,MDF,DBC)
 KJ 2403 ROBINETTE 968R (DLF,HYF,IEF)

BMI\$	368	SIRE																
BIIS	470	CE	BW	WW	YW	DMI	SC	SCF	MM	M&G	MCE	MCW	UDDR	TEAT	CW	FAT	REA	MARB
CHBS	168	6.7	1.7	70	113	0.8	1.8	14.6	34	69	3.5	118	1.30	1.20	100	0.092	0.76	0.36

• Selling four (4) packages of five (5) units of semen.

LOTS 44 - 49



SUNNY SIDE FARM
8570 Shannon Road
Dresden, OH 43821

Jeff Jordan
740-704-4807



Lot 44 – SSF PF21 Lady G Rush 539

44 **SSF PF21 LADY G RUSH 539** (DLF,HYF,IEF,MSUDF,MDF,DBF)
Cow **P44460014** Calved: **4/10/23** Tattoo: **LE J539**

NJW 79Z Z311 ENDURE 173D ET (SOD)(CHB)(DLF,HYF,IEF,MSUDF,MDF,DBF)
CMF 1720 GOLD RUSH 569G ET (CHB)(DLF,HYF,IEF,MSUDF,MDF,DBF)
P44108010 L III TFL C609 VICTORIA 1720 (DLF,HYF,IEF,MSUDF)



MOHICAN EQUITY 407C ET (DLF,HYF,IEF,DBP)
PUGH NOTICE ME PF21 (DBP)
P43965425 WPF NOTICE ME 88X 1039 ET (DLF,HYF,IEF)

KCF BENNETT ENCORE Z311 ET (SOD)(CHB)(DLF,HYF,IEF,MSUDF,MDF,DBF)
BW 91H 100W RITA 79Z ET (DLF,HYF,IEF,MSUDF,MDF)
EFBEEF RESOLUTE CEO (SOD)(CHB)(DLF,HYF,IEF,MSUDF,MDF,DBF)
L III X651 RITA A045 (DOD)(DLF,HYF,IEF,MSUDF,MDF)

MOHICAN TOP SHELF Z1 (SOD)(DLF,HYF,IEF,DBP)
TH 223 71I DOMINETTE 404X ET (DLF,HYF,IEF)
NJW 98S R117 RIBEYE 88X ET (SOD)(DLF,HYF,IEF,MSUDF,MDF,DBF)
C NOTICE ME ET (DLF,HYF,IEF)

BMSI	381																	
BIIS	475	CE	BW	WW	YW	DMI	SC	SCF	MM	M&G	MCE	MCW	UDDR	TEAT	CW	FAT	REA	MARB
CHBS	163	2.8	3.2	63	104	0.2	1.6	15.9	30	62	0.5	82	1.40	1.30	79	0.002	0.64	0.38

- A stunning dark red high-volume daughter of the popular AI sire Gold Rush.
- Take this front pasture female home and breed her to the bull of your choice.
- Sells open.
- OCV.

45 **SSF 704 MS PERFECTO 524** (DLF,HYF,IEF,MSUDF)
Cow **P44440524** Calved: **1/7/23** Tattoo: **LE J524**

LCX PERFECTO 11B ET (DLF,HYF,IEF,MSUDF)
BG LCC 11B PERFECTO 84F (DLF,HYF,IEF,MSUDF,MDF,DBF)
P43892306 BG 100W NICKY 31C (DOD)(DLF,HYF,IEF,MSUDF,MDF)



NJW 33TB 100W TRUST 167Y (SOD)(CHB)(DLF,HYF,IEF,MSUDF,MDF)
JM MISS ADVANCER 167Y 459B 704
P43831487 P&R MS ADVANCER 459B

NJW 98S R117 RIBEYE 88X ET (SOD)(DLF,HYF,IEF,MSUDF,MDF,DBF)
WLL Z0EY 3Z (DLF,HYF,IEF,MDF,DBF)
NJW 73S M326 TRUST 100W ET (SOD)(CHB)(DLF,HYF,IEF,MSUDF,MDF,DBF)
BG MS DOMINO 90Z (HYF)

NJW 73S M326 TRUST 100W ET (SOD)(CHB)(DLF,HYF,IEF,MSUDF,MDF,DBF)
BROOKVIEW 242 TEQUILA ROSE 33T (DLF,HYF,IEF)
P&R ADVANCER L 201Z ET (DLF,HYF,IEF)
P&R MS ADVANCER 120Y (DLF,HYF,IEF)

BMSI	455																	
BIIS	529	CE	BW	WW	YW	DMI	SC	SCF	MM	M&G	MCE	MCW	UDDR	TEAT	CW	FAT	REA	MARB
CHBS	147	10.7	-0.3	55	97	0.1	0.9	21.4	33	60	8.6	75	1.50	1.50	83	0.042	0.89	0.12

- J524 is a big bodied, dark red, short marked Perfecto daughter.
- Top cow prospect.
- Bred AI on 3/27/24 to Huth CLC WF Deluxe K016.



Lot 45 – SSF 704 Ms Perfecto 524



Lot 46 — SSF 0054 Ms Houston 552

- A dark red, big bodied, pigmented daughter of Houston.
- 552 has a rich maternal heritage tracing back to the famed Boyd donor SSF P606 Victoria 803, dam of Boyd Masterpiece 0220.
- Potential donor.
- Sells open.
- OCV.

46 SSF 0054 MS HOUSTON 552 (DLF,HYF,IEF,MSUDF,MDF,DBF)

Cow

P44505230 Calved: 9/15/23 Tattoo: LE J552

SHF DAYBREAK Y02 D287 ET (CHB)(DLF,HYF,IEF,MSUDF)
 SHF HOUSTON D287 H086 (CHB)(DLF,HYF,IEF,MSUDF,MDF,DBF)
 P44123641 SHF MISS 14 20Z D223 (DLF,HYF,IEF,DBP)

SHF YORK 19H Y02 (SOD)(CHB)(DLF,HYF,IEF)
 SHF MISS M326 T08 ET (DLF,HYF,IEF)
 LOEWEN 44X 6X 20Z (DBP)
 SHF RADAR R125 T75 (DLF,HYF,IEF,DBP)



BOYD 31Z BLUEPRINT 6153 (DLF,HYF,IEF,MSUDF,MDF,DBF)
 BOYD 4055 HOLLY 0054 (DLF,HYF,IEF,MSUDF,DBP)
 P44135775 BOYD 1017 HOLLY 4055 ET (DLF,HYF,IEF,MSUDF,DBP)

R LEADER 6964 (SOD)(DLF,HYF,IEF,MSUDF,DBF)
 NJW 91H 100W RITA 31Z ET (DLF,HYF,IEF)
 TH 71U 719T MR HEREFORD 11X (SOD)(DLF,HYF,IEF,MDF,DBF)
 BOYD 803 HOLLY 1017 (DLF,HYF,IEF,DBP)

BMI\$	444																	
BII\$	548	CE	BW	WW	YW	DMI	SC	SCF	MM	M&G	MCE	MCW	UDDR	TEAT	CW	FAT	REA	MARB
CHBS	176	3.7	2.9	78	124	0.3	1.6	18.8	29	68	4.9	119	1.40	1.40	97	0.022	0.88	0.28

47 SSF 556C LADY PRINT 542 (DLF,HYF,IEF,MSUDF)

Cow

P44505172 Calved: 8/15/23 Tattoo: LE J542

BOYD 31Z BLUEPRINT 6153 (DLF,HYF,IEF,MSUDF,MDF,DBF)
 RST FINAL PRINT 0016 (CHB)(DLF,HYF,IEF,MSUDF,MDF)
 P44178105 RST MS X651 TESTED 8032 (DLF,HYF,IEF,MSUDF,MDF,DBF)



KCF BENNETT ENCORE Z311 ET (SOD)(CHB)(DLF,HYF,IEF,MSUDF,MDF,DBF)
 WLKR CMF JH LADY Z311 556C (DLF,HYF,IEF,MSUDF)
 P43597342 KCF MISS 3027 X410 (DLF,HYF,IEF)

R LEADER 6964 (SOD)(DLF,HYF,IEF,MSUDF,DBF)
 NJW 91H 100W RITA 31Z ET (DLF,HYF,IEF)
 EFBEEF TFL U208 TESTED X651 ET (SOD)(CHB)(DLF,HYF,IEF,MSUDF)
 RST MS 0124TIMESAWASTIN 6094 (DLF,HYF,IEF,MSUDP)

SCHU-LAR ON TARGET Z2S (SOD)(CHB)(DLF,HYF,IEF,MSUDF,MDF,DBF)
 KCF MISS REVOLUTION X338 ET (DLF,HYF,IEF,DBP)
 UPS DOMINO 3027 (SOD)(CHB)(DLF,HYF,IEF,MSUDF,MDF)
 KCF MISS P606 P259 (DOD)(DLF,HYF,IEF)

BMI\$	380																	
BII\$	483	CE	BW	WW	YW	DMI	SC	SCF	MM	M&G	MCE	MCW	UDDR	TEAT	CW	FAT	REA	MARB
CHBS	147	7.2	2.2	79	123	0.8	1.3	16.5	34	74	8.3	99	1.30	1.30	89	0.052	0.72	0.25



Lot 47 — SSF 556C Lady Print 542

- J542 is an attractive, deep bodied Final Print daughter that has been a favorite among visitors.
- Her dam is a top producing Encore that provided us with several sale features in the past.
- Excellent EPDs.
- Sells open.
- OCV.



WLKR CMF JH Lady Z311 556C — Dam of Lot 47



- A dark red, goggled eyed beauty by Longest Yard.
- Great EPDs.
- Sells open.
- OCV.

Lot 48 — SSF 7R18 Ms Yard 551

48

SSF 7R18 MS YARD 551 {DLF,HYF,IEF,MSUDF,MDF,DBF}

P44505160 Calved: 9/15/23 Tattoo: LE J551

Cow

NJW LONG HAUL 36E ET {DLF,HYF,IEF,MSUDF,MDF,DBF}
EF MF LONGEST YARD 19Z 228J ET {DLF,HYF,IEF,MSUDF,MDF,DBF}
 P44225190 AH MS 25L RUMBLER 19Z {DOD}{DLF,HYF,IEF,MSUDF,DBF}



MSU TCF REVOLUTION 4R {SOD}{DLF,HYF,IEF,MDF,DBF}
RKH SMITH EXCITING 4R14 7R18 {DOD}{DLF,HYF,IEF,MSUDF,DBF}
 P43848975 RKH SMITH EXCITING 1G22 4R14

CHURCHILL SENSATION 028X {SOD}{DLF,HYF,IEF,MDF,DBF}
 NJW 79Z 10W RITA 11B {DLF,HYF,IEF,MSUDF,MDF}
 BAR JZ RUMBLE 525X {DLF,HYF,IEF,DBF}
 AH JDH MS 25L WRANGLER 34X ET {DOD}{DLF,HYF,IEF}

FELTONS LEGEND 24Z {SOD}{HYF}
 MSU TCF RACHAEL ET 54N {DLF,HYF,IEF,DBF}
 RKH SMITH REDWOOD 8U07 ET {DLF,HYF,IEF}
 RKH SMITH EXCITING 107 1G22 {DOD}

BMI\$	469																	
BII\$	553	CE	BW	WW	YW	DMI	SC	SCF	MM	M&G	MCE	MCW	UDDR	TEAT	CW	FAT	REA	MARB
CHBS	124	6.4	1.7	69	107	0.4	1.1	23.3	38	73	3.5	111	1.40	1.50	82	0.022	0.62	0.03

49

SSF 320 MS YARD 547 {DLF,HYF,IEF,MSUDF}

P44505163 Calved: 8/22/23 Tattoo: LE J547

Cow

NJW LONG HAUL 36E ET {DLF,HYF,IEF,MSUDF,MDF,DBF}
EF MF LONGEST YARD 19Z 228J ET {DLF,HYF,IEF,MSUDF,MDF,DBF}
 P44225190 AH MS 25L RUMBLER 19Z {DOD}{DLF,HYF,IEF,MSUDF,DBF}



TH 223 711 VICTOR 755T {SOD}{DLF,HYF,IEF,MSUDF,MDF}
SSF 082 MISS 755T 320
 P43866597 SSF 4102 LADY SHREK 082

CHURCHILL SENSATION 028X {SOD}{DLF,HYF,IEF,MDF,DBF}
 NJW 79Z 10W RITA 11B {DLF,HYF,IEF,MSUDF,MDF}
 BAR JZ RUMBLE 525X {DLF,HYF,IEF,DBF}
 AH JDH MS 25L WRANGLER 34X ET {DOD}{DLF,HYF,IEF}

DRF JWR PRINCE VICTOR 711 {SOD}{DLF,HYF,IEF,MSUDF}
 KBCR 19D DOMINETTE 223 {DLF,HYF,IEF}
 SSF JID SHREK 669 {SOD}
 BOYD KEEPSAKE 4102

BMI\$	413																	
BII\$	482	CE	BW	WW	YW	DMI	SC	SCF	MM	M&G	MCE	MCW	UDDR	TEAT	CW	FAT	REA	MARB
CHBS	100	2.8	1.2	57	86	0.1	0.4	21.2	37	66	-3.2	62	1.40	1.40	66	0.022	0.43	-0.01

- A nicely balanced, good looking Longest Yard daughter.
- J547 stems from one of our most productive and prolific cow families.
- Buy with confidence.
- Sells open.
- OCV.



Lot 49 — SSF 320 Ms Yard 547

50
Cow

BLZ DOLORES D973 0065 L053ET (DLF,HYF,IEF,MSUDF,MDF,DBF)

P44509014

Calved: **8/16/23**

Tattoo: **LE L053/RE BLZ**

C CJC BELLE HEIR ET (CHB)(DLF,HYF,IEF)
C KEY WEST 0065 (DLF,HYF,IEF,MSUDF,MDF,DBP)
 P44122894 C BLACK HAWK LASS 8019 (DLF,HYF,IEF,MSUDF,MDF,DBP)
 P43827942 WF BELLE B919 (DLF,HYF,IEF,DBP)

BR BELLE AIR 6011 (CHB)(DLF,HYF,IEF,MSUDF,DBF)
 C CJC 89T MISS MILES 4264 ET (DLF,HYF,IEF)
 C BLACK HAWK DOWN ET (SOD)(DLF,HYF,IEF,MSUDF,DBP)
 C 88X RIBEYE LADY 6245 (DLF,HYF,IEF,MSUDF,MDF)

MSU TCF REVOLUTION 4R (SOD)(DLF,HYF,IEF,MDF,DBC)
WF MISS DOLORES D973 (DLF,HYF,IEF,MSUDF,MDF,DBF)
 P43827942 WF BELLE B919 (DLF,HYF,IEF,DBP)

FELTONS LEGEND 242 (SOD)(HYF)
 MSU TCF RACHALET 54N (DLF,HYF,IEF,DBP)
 KJ 471T MANDAN 704Z ET (DLF,HYF,IEF,DBP)
 WF MISS PARAMOUNT Z175 (DLF,HYF,IEF,DBP)

BMSI\$	413																	
BIIS	488	CE	BW	WW	YW	DMI	SC	SCF	MM	M&G	MCE	MCW	UDDR	TEAT	CW	FAT	REA	MARB
CHBS	128	4.2	4.0	58	89	0.4	1.0	19.8	30	60	1.3	77	1.40	1.40	78	-0.018	0.60	0.11

LOTS 50 - 53

BLAZER FARMS
est. CATTLE COMPANY 2015



BLAZER FARMS
CATTLE COMPANY

Mike McFarlin
615-293-4044



WF Miss Dolores D973 — Dam of Lot 50

- A beautifully designed Key West heifer from a DBF 4R daughter who commanded \$21,000 at the 2021 TRM production sale. Her dam has a near perfect udder and we would expect no less from this daughter. Very solid EPD profile.
- Sells open.




Lot 50 — BLZ Dolores D973 0065 L053ET



Lot 51 — BLZ Whitney 1131J D287 L032

- Check out this fall natural calf sired by Houston and out of a first calf heifer! Very sleek designed, goggle eyed, and an outstanding EPD profile. Should be an all-star once in production. Retaining rights to one flush at seller's expense and buyer's convenience.
- Sells open.

51 BLZ WHITNEY 1131J D287 L032 (DLF,HYF,IEF,MSUDF)
Cow P44509080 Calved: 8/4/23 Tattoo: LE L032/RE BLZ

SHF DAYBREAK Y02 D287 ET (CHB)(DLF,HYF,IEF,MSUDF) SHF YORK19H Y02 (SOD)(CHB)(DLF,HYF,IEF)
 SHF HOUSTON D287 H086 (CHB)(DLF,HYF,IEF,MSUDF,MDF,DBF) SHF MISS M326 T08 ET (DLF,HYF,IEF)
 P44123641 SHF MISS 14 20Z D223 (DLF,HYF,IEF,DBP) LOEWEN 44X 6X 20Z (DBP)
 SHF RADAR R125 T75 (DLF,HYF,IEF,DBP)
 NJW 79Z Z311 ENDURE I73D ET (SOD)(CHB)(DLF,HYF,IEF,MSUDF,MDF,DBF) KCF BENNETT ENCORE Z311 ET (SOD)(CHB)(DLF,HYF,IEF,MSUDF,MDF,DBF)
 WLKR CRCH LASS 173D 4155 1131J (DLF,HYF,IEF,MSUDF) BW 91H 100W RITA 79Z ET (DLF,HYF,IEF,MSUDF,MDF)
 P44333927 /S LADY JET 4155B (DLF,HYF,IEF,MSUDF,MDF) SHF WONDER M326 W18 ET (SOD)(CHB)(DLF,HYF,IEF,MDC,DBF)
 JET MS X612 (DLF,HYF,IEF)

BMI\$	453																	
BIIS	567	CE	BW	WW	YW	DMI	SC	SCF	MM	M&G	MCE	MCW	UDDR	TEAT	CW	FAT	REA	MARB
CHBS	182	3.0	3.2	79	128	0.6	1.4	19.6	34	74	2.8	89	1.40	1.30	100	0.052	0.84	0.38

52 BLZ GEMINI 7233 0065 L060ET (DLF,HYF,IEF,MSUDF,MDF,DBF)
Cow P44509020 Calved: 8/19/23 Tattoo: LE L060/RE BLZ

CJC BELLE HEIR ET (CHB)(DLF,HYF,IEF) CJC BELLE AIR 6011 (CHB)(DLF,HYF,IEF,MSUDF,DBF)
 C KEY WEST 0065 (DLF,HYF,IEF,MSUDF,MDF,DBP) C CJC 89T MISS MILES 4264 ET (DLF,HYF,IEF)
 P44122894 C BLACK HAWK LASS 8019 (DLF,HYF,IEF,MSUDF,MDF,DBP) C BLACK HAWK DOWN ET (SOD)(DLF,HYF,IEF,MSUDF,DBP)
 C 88X RIBEYE LADY 6245 (DLF,HYF,IEF,MSUDF,MDF)
 INNISFAIL WHR X651/723 4013 ET (CHB)(DLF,HYF,IEF,MSUDF,MDF) EFBEEF TFL U208 TESTED X651 ET (SOD)(CHB)(DLF,HYF,IEF,MSUDF)
 EXR GEMINI 7233 ET (DLF,HYF,IEF) INNISFAIL P230 T723 (DLF,HYF,IEF,MSUDF)
 P43850435 TH 89T 755T GEMINI 471Z (DLF,HYF,IEF) TH 223 711 VICTOR 755T (SOD)(DLF,HYF,IEF,MSUDF,MDF)
 TH 16G 20N GEMINI 89T (DLF,HYF,IEF)

BMI\$	461																	
BIIS	556	CE	BW	WW	YW	DMI	SC	SCF	MM	M&G	MCE	MCW	UDDR	TEAT	CW	FAT	REA	MARB
CHBS	143	4.4	3.7	69	108	0.6	1.2	22.4	32	67	0.9	96	1.40	1.40	85	-0.008	0.57	0.21



Lot 52 — BLZ Gemini 7233 0065 L060ET

- Stout Key West daughter of the Gemini 7233 donor who we selected from Express Ranches several years back. Maternal sisters to this calf have been extremely popular in other sales and we expect this girl will have lots of friends on sale day as well. This one will make anyone's program better.
- Sells open.



CHOICE LOT

53A
or
53B

Lot 53A — BLZ 333 Val B413 L007ET

53A **BLZ 333 VAL B413 L007ET** (DLF,HYF,IEF,MSUDF)
Cow
P44475988 Calved: 2/22/23 Tattoo: LE L007/RE BLZ

EFBEEF TFL U208 TESTED X651 ET (SOD)(CHB)(DLF,HYF,IEF,MSUDF) EFBEEF FOREMOST U208 (SOD)(CHB)(DLF,HYF,IEF,MSUDF)
EFBEEF BR VALIDATED B413 (SOD)(CHB)(DLF,HYF,IEF,MSUDF,MDF,DBF) EFBEEF P606 MABEL R415
P43588667 EFBEEF 4R THYRA Y865 (DLF,HYF,IEF,MDF,DBC) MSU TCF REVOLUTION 4R (SOD)(DLF,HYF,IEF,MDF,DBC)
EFBEEF N014 THYRA S645 (DOD)(DLF,HYF,IEF)



NJW 33TB 100W TRUST 167Y (SOD)(CHB)(DLF,HYF,IEF,MSUDF,MDF) NJW 73S M326 TRUST 100W ET (SOD)(CHB)(DLF,HYF,IEF,MSUDF,MDF,DBF)
WLKR JM LASS 167Y 333 F101 ET (DLF,HYF,IEF) BROOKVIEW 242 TEQUILA ROSE 33T (DLF,HYF,IEF)
P43914491 WALKER LASS X51 Y479 333 (DLF,HYF,IEF,MSUDF) KCF BENNETT REVOLUTION X51 (SOD)(CHB)(DLF,HYF,IEF,MDF,DBF)
GRNDVIEW CMR BETH 156T Y479 ET (DLF,HYF,IEF,MSUDF)

BMI\$	554	CE	BW	WW	YW	DMI	SC	SCF	MM	M&G	MCE	MCW	UDDR	TEAT	CW	FAT	REA	MARB
CHBS	213	2.0	1.7	52	83	0.3	0.8	25.2	37	63	4.5	72	1.40	1.40	82	0.082	1.13	0.98

53B **BLZ 333 VAL B413 L008ET** (DLF,HYF,IEF,MSUDF)
Cow
P44475989 Calved: 2/23/23 Tattoo: LE L008/RE BLZ

EFBEEF TFL U208 TESTED X651 ET (SOD)(CHB)(DLF,HYF,IEF,MSUDF) EFBEEF FOREMOST U208 (SOD)(CHB)(DLF,HYF,IEF,MSUDF)
EFBEEF BR VALIDATED B413 (SOD)(CHB)(DLF,HYF,IEF,MSUDF,MDF,DBF) EFBEEF P606 MABEL R415
P43588667 EFBEEF 4R THYRA Y865 (DLF,HYF,IEF,MDF,DBC) MSU TCF REVOLUTION 4R (SOD)(DLF,HYF,IEF,MDF,DBC)
EFBEEF N014 THYRA S645 (DOD)(DLF,HYF,IEF)



NJW 33TB 100W TRUST 167Y (SOD)(CHB)(DLF,HYF,IEF,MSUDF,MDF) NJW 73S M326 TRUST 100W ET (SOD)(CHB)(DLF,HYF,IEF,MSUDF,MDF,DBF)
WLKR JM LASS 167Y 333 F101 ET (DLF,HYF,IEF) BROOKVIEW 242 TEQUILA ROSE 33T (DLF,HYF,IEF)
P43914491 WALKER LASS X51 Y479 333 (DLF,HYF,IEF,MSUDF) KCF BENNETT REVOLUTION X51 (SOD)(CHB)(DLF,HYF,IEF,MDF,DBF)
GRNDVIEW CMR BETH 156T Y479 ET (DLF,HYF,IEF,MSUDF)

BMI\$	518	CE	BW	WW	YW	DMI	SC	SCF	MM	M&G	MCE	MCW	UDDR	TEAT	CW	FAT	REA	MARB
CHBS	209	-0.2	2.8	62	97	0.3	0.9	22.9	30	61	6.2	93	1.40	1.30	82	0.072	0.93	0.93

- Selling choice of these ET yearling heifers from Validated mating on a Carcass Queen daughter from the Walker program. Unique breeding pieces as each of these heifers are in the top 1% of all three indexes while maintaining balanced EPD profiles. Take one home and you will be in the driver's seat on breeding options.
- Sells open.



Lot 53B — BLZ 333 Val B413 L008ET



WALKER Lass X51 Y479 333
— Grandam of Lots 53A & 53B

LOTS 54 - 57



COTTAGE HILL

COTTAGE HILL FARM
W.C Taylor Family
20 Cottage Hill
Petersburg, WV 26847

David: 304-257-0263

Mike: 304-257-1040

Sonny: 304-257-1557



Lot 54 — KH JLCS 309J Ruby 5G L79

54
Cow

KH JLCS 309J RUBY 5G L79

P44500146

Calved: 8/29/23

Tattoo: BE L79

LOEWEN GENESIS G16 ET (CHB)(DLF,HYF,IEF,MSUDF,DMDF,DFB)
KJ 7603 VENTURE 309J ET (DLF,HYF,IEF,MSUDF,DMDF)
 P44273830 BR VALIDATED B413 5064 7603 (DLF,HYF,IEF,MSUDF,DMDF,DFB)

NJW 79Z Z311 ENDURE 173D ET (SOD)(CHB)(DLF,HYF,IEF,MSUDF,DMDF,DFB)
 LOEWEN 77 48 MISS 344N 4RB42ET (DLF,HYF,IEF,MSUDF,DMDF,DFB)
 EFBEEF BR VALIDATED B413 (SOD)(CHB)(DLF,HYF,IEF,MSUDF,DMDF,DFB)
 BR RED BULL 200Z 2111 5064 (HYF)

INNISFAIL WHR X651/723 4013 ET (CHB)(DLF,HYF,IEF,MSUDF,DMDF)
MOHICAN WHITNEY 5G (DLF,HYF,IEF,MSUDF,DMDF,DFB)
 P44023989 MOHICAN WHITNEY 416C ET (DLF,HYF,IEF,MSUDF,DMDF,DFB)

EFBEEF TFL U208 TESTED X651 ET (SOD)(CHB)(DLF,HYF,IEF,MSUDF,DMDF,DFB)
 INNISFAIL P230 T723 (DLF,HYF,IEF,MSUDF,DMDF,DFB)
 MOHICAN TOP SHELF Z1 (SOD)(DLF,HYF,IEF,MSUDF,DMDF,DFB)
 GOBLE MISS SOLUTION 230Z (DLF,HYF,IEF,MSUDF,DMDF,DFB)

BMI\$	433																																		
BIIS	546	CE	-2.3	BW	3.7	WW	72	YW	116	DMI	0.9	SC	1.9	SCF	20.3	MM	36	M&G	72	MCE	-0.8	MCW	84	UDDR	1.20	TEAT	1.30	CW	85	FAT	0.062	REA	0.62	MARB	0.45
CHBS	154																																		

• Show heifer and future donor here! It's not everyday you find a heifer with this much growth, style and a great set of EPDs. We feel this heifer should follow in her dam's footsteps to be a powerful donor in the future.



Mohican Whitney 5G — Dam of Lots 54 & 55

55

FOUR (4) CONVENTIONAL EMBRYOS

SHF DAYBREAK Y02 D287 ET (CHB)(DLF,HYF,IEF,MSUDF,DMDF,DFB)
SHF HOUSTON D287 H086 (CHB)(DLF,HYF,IEF,MSUDF,DMDF,DFB)
 P44123641 SHF MISS 14 20Z D223 (DLF,HYF,IEF,MSUDF,DMDF,DFB)

SHF YORK 19H Y02 (SOD)(CHB)(DLF,HYF,IEF,MSUDF,DMDF,DFB)
 SHF MISS M326 T08 ET (DLF,HYF,IEF,MSUDF,DMDF,DFB)
 LOEWEN 44X 6X 20Z (DBP)
 SHF RADAR R125 T75 (DLF,HYF,IEF,MSUDF,DMDF,DFB)

INNISFAIL WHR X651/723 4013 ET (CHB)(DLF,HYF,IEF,MSUDF,DMDF,DFB)
MOHICAN WHITNEY 5G (DLF,HYF,IEF,MSUDF,DMDF,DFB)
 P44023989 MOHICAN WHITNEY 416C ET (DLF,HYF,IEF,MSUDF,DMDF,DFB)

EFBEEF TFL U208 TESTED X651 ET (SOD)(CHB)(DLF,HYF,IEF,MSUDF,DMDF,DFB)
 INNISFAIL P230 T723 (DLF,HYF,IEF,MSUDF,DMDF,DFB)
 MOHICAN TOP SHELF Z1 (SOD)(DLF,HYF,IEF,MSUDF,DMDF,DFB)
 GOBLE MISS SOLUTION 230Z (DLF,HYF,IEF,MSUDF,DMDF,DFB)

BMI\$	453	SIRE																																	
BIIS	560	CE		BW		WW		YW		DMI		SC		SCF		MM		M&G		MCE		MCW		UDDR		TEAT		CW		FAT		REA		MARB	
CHBS	181	1.1	3.4	81	134	0.5	1.8	19.2	29	70	0.2	107	1.40	1.40	105	0.062	0.99	0.26																	

BMI\$	457	DAM																																	
BIIS	571	CE		BW		WW		YW		DMI		SC		SCF		MM		M&G		MCE		MCW		UDDR		TEAT		CW		FAT		REA		MARB	
CHBS	148	2.8	2.8	72	110	0.4	1.8	22.2	34	70	1.2	89	1.20	1.30	72	0.022	0.30	0.44																	

• Selling four (4) grade 1 conventional embryos guaranteeing one (1) pregnancy.



SHF Houston D287 H086 — Sire of Lot 55



NJW 6W 80X Stella 95Z — Dam of Lot 56

NJW 160B 028X Historic 81E ET — Sire of Lot 56A

56 CHF TTF 87G STELLA 2539 ET

P44529128 Calved: 3/14/22 Tattoo: RE 2539

Cow
 /S MANDATE 66589 ET (DLFHYFEJEFMSUDF,DFB)
NJW 133A 6589 MANIFEST 87G ET (DLFHYFEJEFMSUDF,DFB)
 P44057384 BW NJW 76S 8Y HOMESPUN 133A (DLFHYFEJEFMSUDF,MDC)
 NJW 98S R117 RIBEYE 80X ET (DLFHYFEJEF)
NJW 6W 80X STELLA 95Z (DLFHYFEJEFMSUDF)
 P43311906 NJW 146T KODI 6W (HYF)
 R LEADER 6964 (SOD)(DLFHYFEJEFMSUDF,DFB)
 /S LADY DOMINO 0158X (DLFHYFEJEF)
 NJW 73S W18 HOMETOWN 10Y ET (SOD)(CHB)(DLFHYFEJEFMSUDF,MDC)
 NJW 55N STARDUST 76S (DLFHYFEJEFMSUDF,MDF)
 SHF RIB EYE M326 R117 (SOD)(CHB)(DLFHYFEJEF)
 NJW 9126J DEW DOMINO 98S (DOD)(DLFHYFEJEF)
 S&S KODIAK 63J (SOD)(HYF)
 LCG CLASSY STELLA 146T (HYF)

BMSI	436																	
BIIS	515	CE	BW	WW	YW	DMI	SC	SCF	MM	M&G	MCE	MCW	UDDR	TEAT	CW	FAT	REA	MARB
CHBS	119	4.9	1.7	61	100	0.4	1.4	21.5	25	56	1.0	127	1.30	1.30	75	0.042	0.59	0.09

• We have been super excited about our Manifest daughters since they were born. We felt though that their brightest days were going to be when they came into production and we were correct! This daughter of Stella 95Z is a calf raising machine. She is double pigmented, dark red, and beautiful uddered.
 • Heifer calf, tattoo 4008, calved on 1/9/2024

56A CHF 81E STELLA 4008

P44541839 Calved: 1/9/24 Tattoo: RE 4008

Cow
 CHURCHILL SENSATION 028X (SOD)(DLFHYFEJEF,MDF,DFB)
NJW 160B 028X HISTORIC 81E ET (DLFHYFEJEFMSUDF,MDF,DFB)
 P43829334 NJW 73S 38W DAYDREAM 160B (DLFHYFEJEFMSUDF)
 UPS DOMINO 3027 (SOD)(CHB)(DLFHYFEJEFMSUDF,DFB)
 CHURCHILL LADY 7202T ET (DLFHYFEJEF)
 NJW 76S P20 BEEF 38W ET (SOD)(DLFHYFEJEFMSUDF,MDF)
 NJW P606 72N DAYDREAM 73S (DLFHYFEJEFMSUDF,MDF)
 NJW 133A 6589 MANIFEST 87G ET (DLFHYFEJEFMSUDF,MDF,DFB)
CHF TTF 87G STELLA 2539 ET
 P44529128 NJW 6W 80X STELLA 95Z (DLFHYFEJEFMSUDF)
 /S MANDATE 66589 ET (DLFHYFEJEFMSUDF,MDF,DFB)
 BW NJW 76S 8Y HOMESPUN 133A (DLFHYFEJEFMSUDF,MDC)
 NJW 98S R117 RIBEYE 80X ET (DLFHYFEJEF)
 NJW 146T KODI 6W (HYF)

BMSI	481																	
BIIS	559	CE	BW	WW	YW	DMI	SC	SCF	MM	M&G	MCE	MCW	UDDR	TEAT	CW	FAT	REA	MARB
CHBS	117	5.9	0.9	58	92	0.4	1.1	24.6	34	63	-0.1	98	1.40	1.45	74	0.052	0.77	0.09

57 CHF 8128 IMAGE 2114 (DBP)

P44525180 Calved: 3/26/22 Tattoo: RE 2114

Cow
 NJW 79Z 2311 ENDURE 173D ET (SOD)(CHB)(DLFHYFEJEFMSUDF,MDF,DFB)
UPS ENDURE 8128 (CHB)(DLFHYFEJEFMSUDF,MDF,DFB)
 P43921729 UPS MISS REVOLUTION 4013 (HYF,DFB)
 KCF BENNETT ENCORE 2311 ET (SOD)(CHB)(DLFHYFEJEFMSUDF,MDF,DFB)
 BW 91H 100W RITA 79Z ET (DLFHYFEJEFMSUDF,MDF)
 R REVOLUTION 4190 (DLFHYFEJEF,DFB)
 UPS MISS TUG 909Z (DOD)(HYF)
 NJW 78P 88X COWBOSS 199B ET (DLFHYFEJEF,MDF)
DCR 199B IMAGE 9306 (DLFHYFEJEFMSUDF,DFB)
 P44065955 DCR IMAGE 4057 (HYF,DFB)
 NJW 98S R117 RIBEYE 88X ET (SOD)(DLFHYFEJEFMSUDF,MDF,DFB)
 NJW BW LADYSPORT DEW 78P ET (DLFHYFEJEF)
 TW HERCULES (DLFHYFEJEF,DFB)
 DCR 713 IMAGE 2005 (HYF)

BMSI	352																	
BIIS	427	CE	BW	WW	YW	DMI	SC	SCF	MM	M&G	MCE	MCW	UDDR	TEAT	CW	FAT	REA	MARB
CHBS	138	7.7	1.9	58	97	0.3	1.5	15.1	26	55	6.2	94	1.20	1.20	81	0.022	0.67	0.15

• Here is a great opportunity to own straight genetics from Durbin Creek Ranch. This bred heifer is the natural daughter from our exciting new donor Image 9306. 2114 is a brood cow in the making. She has that easy fleshing look with loads of rib shape.
 • Pasture exposed from 11/10/2023 to 1/20/2024 to Boyd Deliverance 0100 ET.



DCR 199B Image 9306 — Dam of Lot 57

LOTS 58 - 67



MCDONALD FARM
7791 Eastern Ave SE
Grand Rapids, MI 49508

Scott McDonald
616-446-2146
Gerald Green
517-819-7978



BK CMCC Kool Profit K001ET — Sire of Lot 58

58 PREGNANCY DUE ON 8/26/24

H THE PROFIT 8426 ET (DLF,HYF,IEF,MSUDF,MDF,DBF)
BK CMCC KOOL PROFIT K001ET (DLF,HYF,IEF,MSUDF,MDF,DBF)
P44405442 BK DISTINCTIVE POINTS 641D ET (DLF,HYF,IEF,MSUDF)

CHURCHILL PILGRIM 632D ET (SOD)(DLF,HYF,IEF,MSUDF,MDF,DBF)
RST GAT NST Y79D LADY 54B ET (DLF,HYF,IEF,MSUDF,MDF,DBF)
CHAC MASON 2214 (DLF,HYF,IEF)
HAPP KOOL AID POINTS 1218 ET (DLF,HYF,IEF,MDF,DBF)

INNISFAIL WHR X651/723 4013 ET (CHB)(DLF,HYF,IEF,MSUDF,MDF)
MOHICAN ROSE 96G ET (DLF,HYF,IEF,MSUDF)
P44024034 RHF 8Y ROSE GARDEN 4067B ET (DLF,HYF,IEF,MSUDF,MDF)

EFBEEF TFL U208 TESTED X651 ET (SOD)(CHB)(DLF,HYF,IEF,MSUDF)
INNISFAIL P230 T723 (DLF,HYF,IEF,MSUDF)
NIJW 73S W18 HOMEGROWN 8Y ET (SOD)(DLF,HYF,IEF,MSUDF,MDF,DBF)
GRANDVIEW CMR MIS P606 X395 ET (DLF,HYF,IEF,MSUDF)

- Excellent opportunity to invest in a power mating between the OKC Reserve Champion bull and the popular donor we own with Mohican West.
- Rose 96G progeny have been in strong demand as she has sons working at Topp Herefords in North Dakota, ANL and Brooks Farm in Canada, Mead Farms in Missouri, Steve Whitt in South Dakota, and a daughter in the donor program for Sand Rock Herefords in Wisconsin.
- This donor dam brings it all to the table - performance, milk, carcass qualities and a phenotype we all search for.
- Kool Profit has that extra power and a show look that will compliment this mating. He is elite in his look and presence.
- His dam, BK Distinctive Points 641D ET needs no introduction as she has stamped out numerous national champions for Buck Cattle Co.

BMI\$	239	SIRE																
BIIS	315	CE	BW	WW	YW	DMI	SC	SCF	MM	M&G	MCE	MCW	UDDR	TEAT	CW	FAT	REA	MARB
CHBS	140	-0.3	4.2	65	117	0.7	0.7	6.7	34	67	0.7	153	1.20	1.20	81	0.002	0.84	0.16

BMI\$	461	DAM																	
BIIS	572	CE	BW	WW	YW	DMI	SC	SCF	MM	M&G	MCE	MCW	UDDR	TEAT	CW	FAT	REA	MARB	
CHBS	138	4.7	2.6	65	102	0.4	1.7	23.2	39	71	3.8	72	1.50	1.50	71	0.112	0.26	0.44	



Mohican Rose 96G ET — Dam of Lot 58

“Roses”
are
“Kool”



- Phenotypically this heifer has all the right parts; smooth from end to end, long fronted, beautiful attractive look with an abundance of rib shape power and presence.
- Bred AI on 4/12/24 to EF MF Longest Yard 19Z 228J ET, then pasture exposed from 4/14 to 5/10/24 to Bar Star Fresh Prince 018 ET.

Lot 59 — MF 75J Leah 195B 206L

59 MF 75J LEAH 195B 206L (DLF,HYF,IEF,MSUDF,DBP)
Cow P44440619 Calved: 12/8/22 Tattoo: BE 206L

NJW 73S W18 HOMETOWN 10Y ET (S00)(CHB)(DLF,HYF,IEF,MSUDF,MDC) SHF WONDER M326 W18 ET (S00)(CHB)(DLF,HYF,IEF,MDC,DBF)
 HARVIE SMOKE STACK ET 195B (CHB)(DLF,HYF,IEF,MSUDF,MDF) NJW P606 72N DAYDREAM 73S (DLF,HYF,IEF,MSUDF,MDF)
 P4371169 HARVIE OVHF MS UNIQUE 80W (HYP) HARVIE RAFTSMAN 16R (S00)(DLF,HYF,IEF,MDF)
 BBSF 100L UNIQUE ET 131R (HYP)

TH MASTERPLAN 183F (CHB)(DLF,HYF,IEF,MSUDF,MDF,DBP) KCF BENNETT STRATEGY 2303 ET (CHB)(DLF,HYF,IEF,MSUDF,MDF,DBP)
 TH 507F 183F LADY SAGE 75J (DLF,HYF,IEF,MSUDF,DBP) TH 512X 145Y DOMINETTE 57B (DLF,HYF,IEF)
 P44226105 TH 71S 358C LADY SAGE 507F ET (DLF,HYF,IEF) TH 403A 475Z PIONEER 358C ET (S00)(DLF,HYF,IEF,MSUDF)
 LAGRAN LADY SAGE 71S ET (DLF,HYF,IEF)

BMSIS	381																	
BIIS	489	CE	BW	WW	YW	DMI	SC	SCF	MM	M&G	MCE	MCW	UDDR	TEAT	CW	FAT	REA	MARB
CHBS	115	6.3	2.8	67	103	0.9	1.7	19.5	19	53	0.0	76	1.60	1.70	65	0.092	0.21	0.41

60 MF 7J LUNA 138J 201L (DLF,HYF,IEF,MSUDF,DBP)
Cow P44440604 Calved: 12/2/22 Tattoo: BE 201L

HARVIE SMOKE STACK ET 195B (CHB)(DLF,HYF,IEF,MSUDF,MDF) NJW 73S W18 HOMETOWN 10Y ET (S00)(CHB)(DLF,HYF,IEF,MSUDF,MDC)
 TH MILESTONE 138J (DLF,HYF,IEF,MSUDF,MDF,DBP) HARVIE OVHF MS UNIQUE 80W (HYP)
 P44240831 TH 106B 174E CLASSY 519G ET (DLF,HYF,IEF,MSUDF) TH FRONTIER 174E (S00)(DLF,HYF,IEF,MSUDF,MDF)
 TH 70Y 14Z LADY CINCH 106B (DLF,HYF,IEF)

TH BIG COUNTRY 537G ET (DLF,HYF,IEF,MSUDF) TH FRONTIER 174E (S00)(DLF,HYF,IEF,MSUDF,MDF)
 TH 175 537G KINSEY 7J (DLF,HYF,IEF,MSUDF,DBP) TH 506X 145Y DOMINETTE 533B ET (D00)(DLF,HYF,IEF,MSUDF)
 P44226035 VIN-MAR KINSEY 175 (DLF,HYF,IEF,DBP) CIH HARLAND 408 (S00)(DLF,HYF,IEF,MSUDF,MDF)
 K&B LADY SENTRY 9107W (HYP,DBP)

BMSIS	472																	
BIIS	579	CE	BW	WW	YW	DMI	SC	SCF	MM	M&G	MCE	MCW	UDDR	TEAT	CW	FAT	REA	MARB
CHBS	136	13.4	0.0	68	100	1.0	1.1	24.0	26	60	4.9	88	1.60	1.60	80	0.062	0.59	0.39



- Moderate, soft and stout. With tons of capacity and the strength to become a predominate cow with an immense amount of return on investment potential.
- Bred AI on 4/12/24 to EF MF Longest Yard 19Z 228J ET, then pasture exposed from 4/14 to 5/10/24 to Bar Star Fresh Prince 018 ET.

Lot 60 — MF 7J Luna 138J 201L



EF MF Longest Yard 19Z 228J ET
 — Service Sire for Lots 59 & 60



- Long and elegant with plenty of power that holds down into her stifle. With an Ideal udder for a first calf heifer.
- Bred AI on 3/21/24 to TH 100G 105H Innovation 217L, then pasture exposed from 3/21 to 5/5/24 to TH 100G 105H Innovation 217L.
- Lot 61A: Bull calf, tattoo 412M, calved on 1/16/24 by TH 6153 Imprint 956J.

Lot 61 – KHH 96E 33D Primrose 121

61 **KHH 96E 33D PRIMROSE 121**

P44499563 Calved: **9/11/21** Tattoo: **BE 121**

SHF TAHOE R117 T100 (MSUDF,MDF,DBF)
HAROLDSON'S UPGRADE T100 33D (CHB)(DLF,HYF,IEF)
 P43879201 MOHICAN MISSEY 93W (HYP)

SHF RIB EYE M326 R117 (SOD)(CHB)(DLF,HYF,IEF)
 SHF LADY 512 L73 (DOD)(DBP)
 MOHICAN RANGELAND 221R
 MOHICAN MISSEY 401R ET (HYP)

TH 1227II VICTOR 520X ET (DLF,HYF,IEF)
TH 67W 520X PRIMROSE 96E (DLF,HYF,IEF,MSUDF)
 P43818485 TH 166S 45P PRIMROSE 67W (DOD)(DLF,HYF,IEF)

DRF JWR PRINCE VICTOR 71I (SOD)(CHB)(DLF,HYF,IEF,MSUDF)
 KBCR 19D DOMINETTE 122 (DLF,HYF,IEF)
 NIJW FHF 9710 TANK 45P (SOD)(DLF,HYF,IEF,MDF)
 TH 605F 707B PRIMROSE 166S ET (HYP)

BMSIS	323																	
BIIS	395	CE	BW	WW	YW	DMI	SC	SCF	MM	M&G	MCE	MCW	UDDR	TEAT	CW	FAT	REA	MARB
CHBS	122	-6.6	5.9	59	101	0.4	1.0	13.8	24	53	-4.4	103	1.40	1.40	75	0.022	0.62	0.10

62 **LFF 815F BESS 2115**

P44229367 Calved: **1/20/21** Tattoo: **LE 2115**

HAROLDSON'S UPGRADE T100 33D (CHB)(DLF,HYF,IEF,MSUDF,MDF,DBF)
BCC UPGRADED 815F (DLF,HYF,IEF,MDF)
 P43960522 BCC SCARLET 509C (DLF,HYF,IEF,MSUDF,MDC)

SHF TAHOE R117 T100 (MSUDF,MDF,DBF)
 MOHICAN MISSEY 93W (HYP)
 NIJW 73S W18 HOMETOWN 10Y ET (SOD)(CHB)(DLF,HYF,IEF,MSUDF,MDC)
 BCC TARA 3108A (IEP)

KCF BENNETT ENCORE Z311 ET (SOD)(CHB)(DLF,HYF,IEF,MSUDF,MDF,DBF)
NJW 182B Z311 BESS 12D (DLF,HYF,IEF,MSUDF)
 P43722678 NIJW 49Y 22Z MAXIE 182B (DOD)(DLF,HYF,IEF,MSUDF)

SCHU-LAR ON TARGET 22S (SOD)(CHB)(DLF,HYF,IEF,MSUDF,MDF,DBF)
 KCF MISS REVOLUTION X338 ET (DLF,HYF,IEF,DBP)
 NIJW 67U 28M BIG MAX 22Z (DLF,HYF,IEF,MDF)
 NIJW 29U 38W BEEF GAL 49Y (DLF,HYF,IEF,MSUDF)

BMSIS	413																	
BIIS	495	CE	BW	WW	YW	DMI	SC	SCF	MM	M&G	MCE	MCW	UDDR	TEAT	CW	FAT	REA	MARB
CHBS	135	-0.1	3.3	59	92	0.4	1.1	19.4	24	54	-0.9	102	1.30	1.20	81	0.022	0.55	0.19

- Super cool looking from the side offering lots of power and femininity in her front 1/3. Draws back level in her top, and matches this with an incredible hind leg set.
- Bred AI on 3/21/24 to Bar Star Fresh Prince 018, then pasture exposed from 3/21 to 5/5/24 to Bar Star Fresh Prince 018 ET.
- Lot 62A: Bull calf, tattoo 405M, calved on 1/9/24 by TH 30F 0225 Venture 48K.



Lot 62 – LFF 815F Bess 2115



- Extended in her features true cow power here.
- Bred AI on 3/21/24 to TH 100G 105H Innovation 217L, then pasture exposed from 3/21 to 5/5/24 to TH 100G 105H Innovation 217L.

Lot 63 — TH 198G 195B Mari-Jane 117J

63 TH 198G 195B MARI-JANE 117J (DLF,HYF,IEF,MSUDF)
Cow P44240846 Calved: 1/9/21 Tattoo: BE 117J

NJW 73S W18 HOMETOWN 10Y ET (SOD)(CHB)(DLF,HYF,IEF,MSUDF,MDC) SHF WONDER M326 W18 ET (SOD)(CHB)(DLF,HYF,IEF,MDC,DBF)
 HARVIE SMOKE STACK ET 195B (CHB)(DLF,HYF,IEF,MSUDF,MDF) NJW P606 72N DAYDREAM 73S (DLF,HYF,IEF,MSUDF,MDF)
 P43711169 HARVIE OVHF MS UNIQUE 80W (HYP) HARVIE RAFTSMAN 16R (SOD)(DLF,HYF,IEF,MDF)
 BBSF 100L UNIQUE ET 131R (HYP)

TH 403A 475Z PIONEER 358C ET (SOD)(DLF,HYF,IEF,MSUDF) TH 89T 75T STOCKMAN 475Z (SOD)(DLF,HYF,IEF)
 TH 71U 17Y RITA 403A (DLF,HYF,IEF)
 TH 75J 44M LEGACY 103R (DLF,HYF,IEF)
 TH 56N 26N MARI-JANE 74S (HYP)

BMI\$	347																	
BIIS	444	CE	BW	WW	YW	DMI	SC	SCF	MM	M&G	MCE	MCW	UDDR	TEAT	CW	FAT	REA	MARB
CHBS	145	4.5	2.1	66	103	0.9	0.9	14.8	20	53	-0.5	117	1.40	1.30	92	0.082	0.56	0.33

63A MF 117J MARI-JANE 48K 410M
Cow P44542595 Calved: 1/12/24 Tattoo: BE 410M

ECR VENTURE 0225 (DLF,HYF,IEF,MSUDF,MDF,DBF) NJW 84B 10W JOURNEY 53D (DLF,HYF,IEF,MSUDF,MDF,DBF)
 TH 30F 0225 VENTURE 48K (DLF,HYF,IEF,MSUDF) ECR Z311 MISS THOR 6082 (DOD)(DLF,HYF,IEF,MSUDF,MDF)
 P44334167 TH 246A 48D LORETTA 30F (DLF,HYF,IEF) TH 505U 14Z PLAYBOOK 48D (DLF,HYF,IEF,MSUDF,MDF)
 TH 508W 409Y LORETTA 246A (DOD)(DLF,HYF,IEF)

HARVIE SMOKE STACK ET 195B (CHB)(DLF,HYF,IEF,MSUDF,MDF) NJW 73S W18 HOMETOWN 10Y ET (SOD)(CHB)(DLF,HYF,IEF,MSUDF,MDC)
 TH 198G 195B MARI-JANE 117J (DLF,HYF,IEF,MSUDF) HARVIE OVHF MS UNIQUE 80W (HYP)
 P44240846 TH 64U 358C MARI-JANE 198G (DLF,HYF,IEF,MSUDF) TH 403A 475Z PIONEER 358C ET (SOD)(DLF,HYF,IEF,MSUDF)
 TH 74S 103R MARI-JANE 64U (DLF,HYF,IEF)

BMI\$	363																	
BIIS	451	CE	BW	WW	YW	DMI	SC	SCF	MM	M&G	MCE	MCW	UDDR	TEAT	CW	FAT	REA	MARB
CHBS	128	5.6	2.1	63	96	0.7	1.0	16.7	21	52	4.9	105	1.30	1.30	79	0.032	0.50	0.24

"018"
 Featured
 Service Sire



Bar Star Fresh Prince 018 ET



Lot 64 — RVP 203D Joy 118J

- Flawless structured. She has plenty of mass and substance, with a great hip and shoulder design. All in a very attractive package
- Bred AI on 11/15/23 to TH 30F 0225 Venture 48K, then pasture exposed from 11/20 to 12/22/23 to Bar Star Fresh Prince 018 ET.
- Safe in calf to pasture exposure.

64 Cow RVP 203D JOY 118J {HYP,DBP}

P44380643 Calved: 2/24/21 Tattoo: RE RVP118J

NJW 135U 10Y HOMETOWN 27A {DLF,HYF,IEF,MSUDF,MDC} NJW 73S W18 HOMETOWN 10Y ET {SOD}{CHB}{DLF,HYF,IEF,MSUDF,MDC}
 NJW 76S 27A LONG RANGE 203D ET {DLF,HYF,IEF,MSUDF,MDF} NJW 4037 34S DURANGO VACA 135U {DOD}{DLF,HYF,IEF,MSUDF}
 P43722086 NJW 55N STARDUST 76S {DLF,HYF,IEF,MSUDF,MDF} NJW BW TRAILDUST 161L {MDF} NJW 57G SPIRIT QUEEN 55N ET {DLF,HYF,IEF}

MHPH 101S UMPIRE 118U
 RVP 118U FERGIE 41F {HYP,DBP}
 P44380642 HAROLDSON'S ANL SARAH 41Y 29B {HYP,DBP}

BNMHPH 13P HEAT 101S {MDF,DBF}
 MHPH MS 68M NITA 1112R
 HAROLDSONS WLC MOTIVE ET 41Y {HYP,DBP}
 HAROLDSON'S SARAH 122L 22R {DBP}

BMI\$	378	CE	BW	WW	YW	DMI	SC	SCF	MM	M&G	MCE	MCW	UDDR	TEAT	CW	FAT	REA	MARB
CHBS	98	3.5	2.9	52	89	0.3	1.5	18.8	29	55	6.6	100	1.30	1.30	69	0.042	0.45	-0.05

65 Cow TH 151G 195B WENDY 166J {DLF,HYF,IEF,MSUDF}

P44240835 Calved: 1/16/21 Tattoo: BE 166J

NJW 73S W18 HOMETOWN 10Y ET {SOD}{CHB}{DLF,HYF,IEF,MSUDF,MDC} SHF WONDER M326 W18 ET {SOD}{CHB}{DLF,HYF,IEF,MDC,DBF}
 HARVIE SMOKE STACK ET 195B {CHB}{DLF,HYF,IEF,MSUDF,MDF} NJW P606 72N DAYDREAM 73S {DLF,HYF,IEF,MSUDF,MDF}
 P43711169 HARVIE OVHF MS UNIQUE 80W {HYP} HARVIE RAFTSMAN 16R {SOD}{DLF,HYF,IEF,MDF}
 BBSF 100L UNIQUE ET 131R {HYP}



TH 95W 7B VINNY 65D {DLF,HYF,IEF,MSUDF}
 TH 166 65D WENDY 151G {DLF,HYF,IEF,MSUDF}
 P43996670 VIN-MAR WENDY 166 {DLF,HYF,IEF}

REMITALL-W START ME UP ET 7B {SOD}{DLF,HYF,IEF,MSUDF,MDF,DBF}
 TH 112T 719T CASSANDRA 95W {DOD}{DLF,HYF,IEF,MSUDF}
 UPS DOMINO 5216 {SOD}{DLF,IEF}
 UPS MISS DOMINO 9023 {DLF,HYF,IEF}

BMI\$	370	CE	BW	WW	YW	DMI	SC	SCF	MM	M&G	MCE	MCW	UDDR	TEAT	CW	FAT	REA	MARB
CHBS	126	4.9	3.4	70	107	0.7	1.2	16.9	20	55	2.2	107	1.50	1.60	80	0.012	0.66	0.13

- Big skeletoned, incredible udder
- Bred AI on 11/16/23 to TH 30F 0225 Venture 48K, then pasture exposed from 11/20 to 12/22/23 to Bar Star Fresh Prince 018 ET.
- Safe in calf to AI service.



Lot 65 — TH 151G 195B Wendy 166J



BR Anastasia G012 ET – Dam of Lots 66 & 67

• Selling six (6) IVF embryos out of the elite top-selling Barber donor in the recent Female Event this spring. Unique power cow with stoutness, bone and a tremendous udder.

66 THREE (3) EMBRYOS

JDH AH BENTON 8G ET (CHB)(DLF,HYF,IEF,MSUDF,MDF,DBF)
STELLPLUG GUNSMOKE 222 ET (DLF,HYF,IEF,MSUDF,MDF,DBF)
 P44400396 NJW 202C 4013 HOMEMAKER 90H ET (DLF,HYF,IEF,MSUDF,MDF,DBF)

CRR 719 CATAPULT 109 (SOD)(DLF,HYF,IEF,MDF)
BR ANASTASIA G012 ET (DLF,HYF,IEF,MSUDF,MDF,DBF)
 P44092606 BR ANASTASIA 3023 ET (DLF,HYF,IEF,DBP)

JDH 118 STUD 3134 63E (CHB)(DLF,HYF,IEF,MSUDF,MDF,DBF)
 JDH AH MS 34X VICTOR 33Z45C ET (DLF,HYF,IEF,MSUDF)
 INNISFAIL WHR X651/723 4013 ET (CHB)(DLF,HYF,IEF,MSUDF,MDF,DBF)
 NJW 160Z 8Y HOME MAKER 202C (DLF,HYF,IEF,MSUDF,MDF,DBF)

TH 122711 VICTOR 719T (SOD)(DLF,HYF,IEF,MSUDF,MDF,DBF)
 CRR 4037 ECLIPSE 808 (DLF,HYF,IEF)
 UPS TCC NITRO 1ET (SOD)(DLF,HYF,IEF,DBP)
 BR ABIGAIL 8130 ET (DLF,HYF,IEF)

BMI\$	474	SIRE																
BIIS	586	CE	BW	WW	YW	DMI	SC	SCF	MM	M&G	MCE	MCW	UDDR	TEAT	CW	FAT	REA	MARB
CHBS	200	1.3	3.0	76	124	0.4	1.4	19.5	32	70	1.7	135	1.50	1.50	110	0.072	1.03	0.40

BMI\$	266	DAM																
BIIS	331	CE	BW	WW	YW	DMI	SC	SCF	MM	M&G	MCE	MCW	UDDR	TEAT	CW	FAT	REA	MARB
CHBS	103	-1.3	5.3	64	104	0.3	0.9	10.8	26	58	-0.7	115	1.10	1.00	70	-0.018	0.38	-0.07



Stellplug Gunsmoke 222 ET – Sire of Lot 66

• Sire of the first set of embryos is the popular STELLPLUG Gunsmoke 222 ET bull.

67 THREE (3) EMBRYOS

BR GKB TRENDING 0104 (DLF,HYF,IEF,MSUDF,MDF,DBF)
BR TRENDING K014 ET (DLF,HYF,IEF,MSUDF,MDF,DBF)
 P44350482 LOEWEN DMF GRACE B42 G17 ET (DLF,HYF,IEF,DBP)

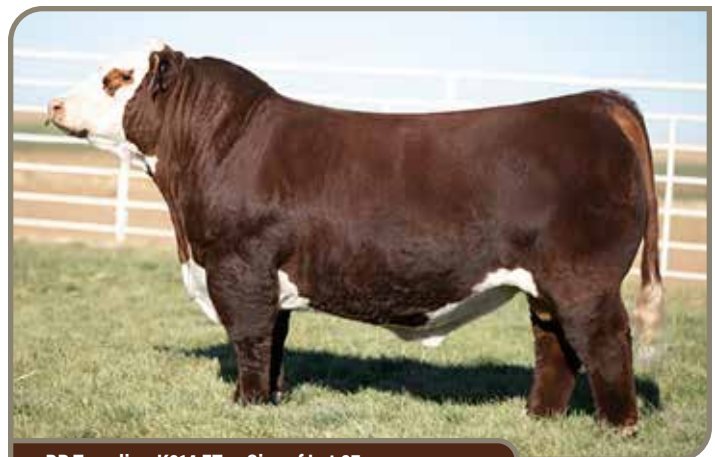
CRR 719 CATAPULT 109 (SOD)(DLF,HYF,IEF,MDF)
BR ANASTASIA G012 ET (DLF,HYF,IEF,MSUDF,MDF,DBF)
 P44092606 BR ANASTASIA 3023 ET (DLF,HYF,IEF,DBP)

BR ENCORE E120A ET (CHB)(DLF,HYF,IEF)
 BR PISTOL ANNIE 4077 ET (DLF,HYF,IEF)
 NJW 79Z Z311 ENDURE 173D ET (SOD)(CHB)(DLF,HYF,IEF,MSUDF,MDF,DBF)
 LOEWEN 77 48 MISS 344N 4RB42ET (DLF,HYF,DBP)

TH 122711 VICTOR 719T (SOD)(DLF,HYF,IEF,MSUDF,MDF,DBF)
 CRR 4037 ECLIPSE 808 (DLF,HYF,IEF)
 UPS TCC NITRO 1ET (SOD)(DLF,HYF,IEF,DBP)
 BR ABIGAIL 8130 ET (DLF,HYF,IEF)

BMI\$	347	SIRE																
BIIS	436	CE	BW	WW	YW	DMI	SC	SCF	MM	M&G	MCE	MCW	UDDR	TEAT	CW	FAT	REA	MARB
CHBS	149	0.5	4.1	72	126	1.1	1.3	14.0	28	64	2.1	133	1.20	1.10	93	0.002	0.97	0.19

BMI\$	266	DAM																
BIIS	331	CE	BW	WW	YW	DMI	SC	SCF	MM	M&G	MCE	MCW	UDDR	TEAT	CW	FAT	REA	MARB
CHBS	103	-1.3	5.3	64	104	0.3	0.9	10.8	26	58	-0.7	115	1.10	1.00	70	-0.018	0.38	-0.07



BR Trending K014 ET – Sire of Lot 67

• Sire of the second set is the high numbered Reserve Champion yearling bull in OKC, BR GKB Trending.

LOTS 68 - 71

DRY CREEK Farms

DRY CREEK FARMS
7522 Dry Creek Rd.
Pell City, AL 35128

Carter St. John
205-705-4041

Locke St. John
615-427-8979



Lot 68A — DCF X61 Cadet 81L

68 CES DOLLY 100W X61 {DLF,HYF,IEF,MSUDF}

P44220330 Calved: **11/11/20** Tattoo: **BE X61**

Cow

KCF BENNETT 3008 M326 {SOD}{CHB}{DLF,HYF,IEF,MDF,DBF}
NJW 73S M326 TRUST 100W ET {SOD}{CHB}{DLF,HYF,IEF,MSUDF,MDF,DBF}
 P43002897 NJW P606 72N DAYDREAM 73S {DLF,HYF,IEF,MSUDF,MDF}



KCF BENNETT PROVIDENT B284 {CHB}{DLF,HYF,IEF,MSUDF,MDF,DBF}
DSB 329B B284 DOLLY 139E {DLF,HYF,IEF,MSUDF}
 P43767616 DSB 8106 50S DOLLY 329B {DLF,HYF,IEF,MSUDF}

RRH MR FELT 3008 {SOD}{CHB}{DLF,HYF,IEF}
 KCF MISS 459 F284 {HYP}
 PW VICTOR BOOMER P606 {SOD}{DLF,HYF,IEF,MDF}
 NJW 94J DEW 72N {DLF,HYF,IEF}

HYALITE ON TARGET 936 {SOD}{DLF,HYF,IEF,MSUDC}
 KCF MISS REVOLUTION 2280 ET {DLF,HYF,IEF,MDF,DBC}
 WLB GLOBAL 72M 50S {DLF,HYF,IEF}
 DH DOMINETTE 8106 {DLF,HYF,IEF}

BMSI	382																	
BIIS	454	CE	BW	WW	YW	DMI	SC	SCF	MM	M&G	MCE	MCW	UDDR	TEAT	CW	FAT	REA	MARB
CHBS	120	7.8	1.2	54	84	0.3	1.3	18.2	23	50	5.0	91	1.40	1.40	71	0.002	0.49	0.12

- A direct daughter of the immortal Trust 100W. This young female does an outstanding job raising quality and phenotype. X61 is the super-efficient kind. Wait 'til you see her calf at side – she's flawless. Her first daughter is one of our top females in our replacement pen.
- Bred AI on 12/23/23 to RST Final Print 0016, then pasture exposed from 1/12/24 to 3/12/24 to Loewen DCF Perfecto 864F 5J. Blood tested safe to AI.

68A DCF X61 CADET 81L

P44530568 Calved: **10/6/23** Tattoo: **BE 81L**

Cow

SCHU-LAR ON TARGET 22S {SOD}{CHB}{DLF,HYF,IEF,MSUDF,MDF,DBF}
SPEARHEAD 22S CORPS COMMANDE 14 {CHB}{DLF,HYF,IEF,MDF,DBF}
 P43850912 SPEARHEAD LULU BELLE B27 {SOD}{DLF,HYF,IEF,MSUDF,MDF,DBF}

SCHU-LAR 5N OF 9L 3008 {SOD}{CHB}{DLF,HYF,IEF}
 SCHU-LAR 208 OF 1H 121 ET {SOD}{HYP}
 SPEARHEAD RIBEYE TROOPER Z32 {DLF,HYF,IEF}
 SPEARHEAD 4R LULU Z7 {DLF,HYF,IEF,MSUDF,MDF,DBF}

NJW 73S M326 TRUST 100W ET {SOD}{CHB}{DLF,HYF,IEF,MSUDF,MDF,DBF}
CES DOLLY 100W X61 {DLF,HYF,IEF,MSUDF}
 P44220330 DSB 329B B284 DOLLY 139E {DLF,HYF,IEF,MSUDF}

KCF BENNETT 3008 M326 {SOD}{CHB}{DLF,HYF,IEF,MDF,DBF}
 NJW P606 72N DAYDREAM 73S {DLF,HYF,IEF,MSUDF,MDF}
 KCF BENNETT PROVIDENT B284 {CHB}{DLF,HYF,IEF,MSUDF,MDF,DBF}
 DSB 8106 50S DOLLY 329B {DLF,HYF,IEF,MSUDF}

BMSI	356																	
BIIS	438	CE	BW	WW	YW	DMI	SC	SCF	MM	M&G	MCE	MCW	UDDR	TEAT	CW	FAT	REA	MARB
CHBS	152	8.0	1.7	60	99	0.5	1.5	14.7	22	51	5.2	104	1.30	1.40	88	0.032	0.74	0.24

- What a sweetheart. This Command daughter will have many friends sale day. Big dark red goggle eyed female that exhibits look, body and bone. Study the phenotype and balance in this female. The money-making kind.



RST Final Print 0016 — AI Service Sire of Lots 68 & 70



Lot 69A — DCF 0782 Miss Target 112L

- Stout made, deep bodied, long made female that stems back to UPS Mighty 7850. Tons of body and mass in this young female. The front pasture kind. Study the added growth and milk numbers in the young prospect.

69 Cow **UPS MISS ON TARGET 0782** (DLF,HYF,IEF,MSUDF,DBP)
44220197 Calved: **10/17/20** Tattoo: **BE 0782**

R ON TARGET 4673 (SOD)(DLF,HYF,IEF,MSUDF,DBP)
GR ON TARGET 2625 (DLF,HYF,IEF,MSUDF,DBP)
 P43604615 GR MISS DOMINO 477 (DOD)(DLF,HYF,IEF,MSUDF)
 ALFA GENESIS
 PERKS 0003 EASY MONEY 4003 (CHB)(DLF,HYF,IEF,MSUDF,MDF)
UPS MISS EASY MONEY 7986 (DBP)
 43875619 UPS MISS ADVANCE 3668 (DBP)
 R ON TARGET 4673 (SOD)(DLF,HYF,IEF,MSUDF,MDF)
 R MISS REVOLUTION 1009 (DOD)(DLF,HYF,IEF,DBP)
 CL 1 DOMINO 5120R 1ET (SOD)(DLF,IEF)
 GR MISS ADVANCE 203 (HYF)
 BR CURRENCY 8144 ET (CHB)(DLF,HYF,IEF)
 PR 144U RAMONA 0003 ET (DLF,HYF,IEF)
 HH ADVANCE 1122Y (DLF,HYF,IEF)
 UPS MISS SPARTAN 0816 (DBP)

BMSI	314																	
BIIS	390	CE	BW	WW	YW	DMI	SC	SCF	MM	M&G	MCE	MCW	UDDR	TEAT	CW	FAT	REA	MARB
CHBS	131	5.1	2.5	64	105	0.7	1.2	12.9	27	59	3.6	92	1.30	1.20	80	-0.008	0.80	0.13

69A Cow **DCF 0782 MISS TARGET 112L** (DLF,HYF,IEF,MSUDF,MDF,DBF)
P44496611 Calved: **9/27/23** Tattoo: **BE 112L**

UPS MIGHTY 7850 ET (DLF,HYF,IEF,MSUDF,MDF)
UPS 7850 MIGHTY 0027 ET (DLF,HYF,IEF,MSUDF,MDF,DBF)
 P44181229 UPS MISS ALTA 7035 (DLF,HYF,IEF,MDF,DBF)
 ALFA GENESIS
 GR ON TARGET 2625 (DLF,HYF,IEF,MSUDF,DBP)
UPS MISS ON TARGET 0782 (DLF,HYF,IEF,MSUDF,DBP)
 44220197 UPS MISS EASY MONEY 7986 (DBP)
 NIJW 79Z 22Z MIGHTY 49C ET (SOD)(DLF,HYF,IEF,MSUDF,MDF)
 UPS MISS HOMETOWN 4279 ET (DLF,HYF,IEF,MSUDF,MDF)
 GR ON TARGET 2625 (DLF,HYF,IEF,MSUDF,DBP)
 LAND ASHLEY 503ET (DLF,HYF,IEF,MDF,DBP)
 R ON TARGET 4673 (SOD)(DLF,HYF,IEF,MSUDF,DBP)
 GR MISS DOMINO 477 (DOD)(DLF,HYF,IEF,MSUDF)
 PERKS 0003 EASY MONEY 4003 (CHB)(DLF,HYF,IEF,MSUDF,MDF)
 UPS MISS ADVANCE 3668 (DBP)

BMSI	383																	
BIIS	469	CE	BW	WW	YW	DMI	SC	SCF	MM	M&G	MCE	MCW	UDDR	TEAT	CW	FAT	REA	MARB
CHBS	117	2.8	4.3	70	115	0.7	1.4	18.1	36	71	-0.1	115	1.30	1.30	74	0.022	0.62	0.10



Lot 69 — UPS Miss On Target 0782

- Attractive made female that's functional in her type and kind. This dark red female stems back to many breed changers. Be sure to check out her heifer calf at side.
- Bred AI on 12/23/23 to Loewen Defiance H49 ET, then pasture exposed from 1/12/24 to 3/12/24 to DCF G16/G16 Genesis 47K ET and DCF 405D Dillard 62K ET. Safe in calf.



DCF G16/G16 Genesis 47K ET — Featured Service Sire 45



• Big growthy Command daughter that's packed with meat and muscle. The Command daughters have made flawless production females with awesome udders. This female will make your neighbor jealous.

Lot 70A — DCF 900H Cadet 88L

70
Cow

RMB 341F SOUTHERN BELLE 900HET (DLF,HYF,IEF,MSUDF,DBP)

P44273738 Calved: 12/6/20 Tattoo: **BE 900H**

R LEADER 6964 (SOD)(DLF,HYF,IEF,MSUDF,DBF)
RMB PRIMETIME 341F (DLF,HYF,IEF)
 P43883545 CES STUNNING 200Z R91 ET (DLF,HYF,IEF,MSUDF)



REMITALL ONLINE 122L (SOD)(CHB)(DLF,HYF,IEF,DBC)
CES JULIA 122L N188 ET (DLF,HYF,IEF,MSUDF,DBP)
 P43548167 CES JULIA 4009 E195 (DLF,HYF,IEF)

HYALITE ON TARGET 936 (SOD)(DLF,HYF,IEF,MSUDC)
 R MISS REVOLUTION 1009 (DOD)(DLF,HYF,IEF,DBP)
 CHURCHILL RED BULL 200Z (SOD)(DLF,HYF,IEF,MSUDF,MDF,DBF)
 STAR SJS SIMPLY STUNNING 111X (DLF,HYF,IEF)

REMITALL EMBRACER 8E (SOD)(HYF)
 REMITALL CATALINA 24H (DBP)
 HRP VICTOR 72A 4009
 CES JULIA A323 C321 (HYP)

BMSIS	407																	
BIIS	478	CE	BW	WW	YW	DMI	SC	SCF	MM	M&G	MCE	MCW	UDDR	TEAT	CW	FAT	REA	MARB
CHBS	97	9.1	1.3	59	88	0.3	1.1	21.0	30	60	5.1	76	1.10	1.20	69	0.032	0.45	-0.02

70A
Cow

DCF 900H CADET 88L (DBP)

P44530566 Calved: 10/4/23 Tattoo: **BE 88L**

SCHU-LAR ON TARGET 22S (SOD)(CHB)(DLF,HYF,IEF,MSUDF,MDF,DBF)
SPEARHEAD 22S CORPS COMMANDE14 (CHB)(DLF,HYF,IEF,MDF,DBF)
 P43850912 SPEARHEAD LULU BELLE B27 (DOD)(DLF,HYF,IEF,MSUDF,MDF,DBF)

RMB PRIMETIME 341F (DLF,HYF,IEF)
RMB 341F SOUTHERN BELLE 900HET (DLF,HYF,IEF,MSUDF,DBP)
 P44273738 CES JULIA 122L N188 ET (DLF,HYF,IEF,MSUDF,DBP)

SCHU-LAR 5N OF 9L 3008 (SOD)(CHB)(DLF,HYF,IEF)
 SCHU-LAR 208 OF 1H 121 ET (DOD)(HYP)
 SPEARHEAD RIBEYE TROOPER Z32 (DLF,HYF,IEF)
 SPEARHEAD 4R LULU Z7 (DLF,HYF,IEF,MSUDF,MDF,DBF)

R LEADER 6964 (SOD)(DLF,HYF,IEF,MSUDF,DBF)
 CES STUNNING 200Z R91 ET (DLF,HYF,IEF,MSUDF)
 REMITALL ONLINE 122L (SOD)(CHB)(DLF,HYF,IEF,DBC)
 CES JULIA 4009 E195 (DLF,HYF,IEF)

BMSIS	369																	
BIIS	451	CE	BW	WW	YW	DMI	SC	SCF	MM	M&G	MCE	MCW	UDDR	TEAT	CW	FAT	REA	MARB
CHBS	142	9.1	1.3	61	100	0.4	1.4	16.1	25	56	5.4	97	1.20	1.30	87	0.062	0.63	0.18



• Attractive made Primetime daughter that exhibits added calving ease and BW. 900H can flat raise one year in and year out. A direct daughter of N188 From the CES Program in south GA.
 • Bred AI on 12/23/23 to RST Final Print 0016, then pasture exposed from 1/12/24 to 3/12/24 to Loewen DCF Perfecto 864F 5J. Blood tested safe to AI.

Loewen DCF Defiance H49 ET — Featured Service Sire



Lot 70 — RMB 341F Southern Belle 900HET



Lot 71A — DCF 0623 Miss Cuda 125L

• Interesting female that expresses many impressive attributes. Soggy made, long spined female that has the goods. Added growth and maternal traits. Big time cow in the making.

71 Cow **UPS MISS ENDURE 0623** (DLF,HYF,IEF,MSUDF)

P44209389 Calved: **9/9/20** Tattoo: **BE 0623**

KCF BENNETT ENCORE Z311 ET (SOD)(CHB)(DLF,HYF,IEF,MSUDF,MDF,DBF)
 NJW 79Z Z311 ENDURE 173D ET (SOD)(CHB)(DLF,HYF,IEF,MSUDF,MDF,DBF)
 P43722088 BW 91H 100W RITA 79Z ET (DLF,HYF,IEF,MSUDF,MDF)

SCHU-LAR ON TARGET 22S (SOD)(CHB)(DLF,HYF,IEF,MSUDF,MDF,DBF)
 KCF MISS REVOLUTION X338 ET (DLF,HYF,IEF,DBF)
 NJW 73S M326 TRUST 100W ET (SOD)(CHB)(DLF,HYF,IEF,MSUDF,MDF,DBF)
 REMITALL RITA 91H (DLF,HYF,IEF)

GO 7195 ADVANCE X55 (DLF,HYF,IEF)
UPS MISS ADVANCE 3570 (DOD)(IEP)
 43461607 UPS MISS NAVARRO 1594 (IEP)

HH ADVANCE 7195T (SOD)(DLF,HYF,IEF)
 GO MS L18 EXCEL P33 (DLF,HYF,IEF)
 UPS NAVARRO (SOD)(CHB)(DLF,HYF,IEF)
 UPS MISS KNIGHT 8726 (IEP)

BMI\$	554																	
BIIS	651	CE	BW	WW	YW	DMI	SC	SCF	MM	M&G	MCE	MCW	UDDR	TEAT	CW	FAT	REA	MARB
CHBS	166	8.7	2.1	60	102	0.4	1.3	27.5	39	69	4.2	78	1.30	1.20	92	0.062	0.78	0.32

71A Cow **DCF 0623 MISS CUDA 125L** (DLF,HYF,IEF,MSUDF)

P44499707 Calved: **10/11/23** Tattoo: **BE 125L**

BEHM 100W CUDA 504C (SOD)(CHB)(DLF,HYF,IEF,MSUDF,MDF,DBF)
 CCCC CUDA 5405 5139H ET (DLF,HYF,IEF,MSUDF)
 P44289626 KE MISS CASH 4A 5405 ET (DLF,HYF,IEF,MSUDF)

NJW 73S M326 TRUST 100W ET (SOD)(CHB)(DLF,HYF,IEF,MSUDF,MDF,DBF)
 BEHM R294 JASMANI02Y (DOD)(DLF,HYF,IEF,MSUDF)
 DKF RO CASH FLOW 0245 ET (SOD)(DLF,HYF,IEF)
 MS DAKITCH MDK PEARL 4A (DLF,HYF,IEF)

NJW 79Z Z311 ENDURE 173D ET (SOD)(CHB)(DLF,HYF,IEF,MSUDF,MDF,DBF)
UPS MISS ENDURE 0623 (DLF,HYF,IEF,MSUDF)
 P44209389 UPS MISS ADVANCE 3570 (DOD)(IEP)

KCF BENNETT ENCORE Z311 ET (SOD)(CHB)(DLF,HYF,IEF,MSUDF,MDF,DBF)
 BW 91H 100W RITA 79Z ET (DLF,HYF,IEF,MSUDF,MDF)
 GO 7195 ADVANCE X55 (DLF,HYF,IEF)
 UPS MISS NAVARRO 1594 (IEP)

BMI\$	419																	
BIIS	505	CE	BW	WW	YW	DMI	SC	SCF	MM	M&G	MCE	MCW	UDDR	TEAT	CW	FAT	REA	MARB
CHBS	145	6.9	2.5	63	109	0.8	1.3	19.6	35	67	3.4	80	1.30	1.20	88	0.012	0.73	0.19



Lot 71 — UPS Miss Endure 0623

• Stout made, big footed daughter of Endure. Love the overall power and pigment in this young 3-year-old. Study the added calving ease, maternal and carcass traits 0623 offers.

• Bred AI on 12/23/23 to Loewen Defiance H49 ET, then pasture exposed from 1/12/24 to 3/12/24 to DCF G16/G16 Genesis 47K ET and DCF 405D Dillard 62K ET. Blood tested safe to AI.



DCF 405D Dillard 62K ET — Featured Service Sire

A MUSIC CITY WEEKEND



BROADWAY ATTRACTIONS:

Tootsie's • Wildhorse Saloon • Dierks Bentley's Whisky Row
Jason Aldean's Rooftop Bar • Miranda Lambert's Casa Rosa • Johnny Cash's Bar & BBQ
Friends in Low Places (Garth Brooks) • Nashville Underground • Ole Red (Blake Shelton)
Chief's (Eric Church) • Kid Rock's Honky Tonk Rock N' Roll



The Parthenon



Greystone Golf Club



Ryman Auditorium



The Nashville Sounds



Gaylord Opryland Resort



Grand Ole Opry



Nashville Shores Waterpark



Country Music Hall of Fame & Museum



Pinewood Canoe & Camp



HERE'S HOW IT WORKS

LiveAuctions.TV

Go to www.LiveAuctions.tv. Please note that you do NOT need an account to watch the auction, but you do need to register an account and request a buyer number if you wish to bid. If you have not created a new account since September 1st, 2020 you will need to click "Register" in the top right corner of the homepage and create a new account. Once you have completed the form on this registration page and hit the "Register" button you will receive an e-mail with a place to click on to verify you have entered a valid e-mail address. Once you have completed this registration process, find the auction you are interested in on the homepage and click on it (sales are listed in chronological order). You should then see a box that says Login. Now that you have an account with LiveAuctions just type in your E-mail Address and Password. You will now see a hyperlink at the top that says "Request a Buyer Number". The first time you request your first buyer number on LiveAuctions it will send you a text message with a verification code in it. Type the code from the text message into the area requiring it and you will then see your name along with a buyer number listed at the top of the webpage where the live video is and you will be able to bid. You will only have to complete this two-step verification process one time. After that you will be able to immediately request a buyer number on any auction without verification through an e-mail or text message again.

LiveAuctions no longer requires an app. If you wish to view/register/bid on a smartphone just type LiveAuctions.tv in whatever web browser you use. The registration process is the same as it is on a desktop computer, but the website is built mobile friendly. Click on the three lines in the top right corner to access the menus.

Bidders who are successful in making purchases will be contacted by the ranch after the auction to settle payment and discover your shipping plans.

If you need help registering to bid or to view the auction please call Technical Support at (682) 816-4900 or e-mail us at TechSupport@LiveAuctions.tv.

Dale Stith
5239 Old Sardis Pike
Mayslick, KY 41055

Herefords

ROCKIN' IN THE SOUTH

SALE PARTICIPANTS

Sale Manager:

Dale Stith
918-760-1550

Chapman Land and Cattle

Nunnely, Tennessee

Woolfolk Farms

Jackson, Tennessee

5J Cattle Company

Clayton, North Carolina

Whispering Winds Farm

Independence, Missouri

Sunny Side Farm

Dresden, Ohio

Blazer Farms Cattle Company

Culleoka, Tennessee

Cottage Hill Farm

Petersburg, West Virginia

McDonald Farm

Grand Rapids, Michigan

Dry Creek Farms

Pell City, Alabama



Lot 6 – CLC 5J H65 New Beginnings 186L



Lot 46 – SSF 0054 Ms Houston 552



Lot 30 – WF 174E Frontier 9779 2466



Lot 1 – UPS Miss Mighty 9090



Lot 71 – UPS Miss Endure 0623



Lot 62 – LFF 815F Bess 2115