



Colyer
HEREFORDS & ANGUS
Spring Frozen Sale

MONDAY, MARCH 2, 2026 at 4:00 P.M. M.S.T.

Live online only **LiveAuctions.TV**

Welcome ~

Welcome to the Third Edition of the Spring Frozen Genetics Sale for Colyer Herefords & Angus. The offering in this catalog is perhaps one of the most unique lineups of frozen genetics from any seedstock provider, of any breed. In addition to the embryo offering, this is one of the first opportunities to acquire semen on the newest lineup of Herd Sires from this program.

On the embryo front, this is an opportunity to tap into potentially the greatest maternal battery anywhere in the Hereford breed. The pages of this catalog are filled with National Champions as well as daughters & granddaughters of them. While the Colyer program has had its successes in the showring, they are rooted selling commercial bulls. Each February they host one of the most successful bull sales in the breed which is built on outstanding phenotype, maternal performance & strong EPD traits. Perhaps one of the most impressive aspects regarding the lineup in this catalog is many of the donor cows are a third or fourth generation donor. There aren't many cowherds in America of any breed that have such a vast, proven, highly productive maternal lineup.

The females in this offering have gone on to produce high sellers in both the Fall Female & Spring Bull Sales to some of the top programs all over North America. With 31 lots of various embryo matings across two breeds, buyers can tap into, and raise progeny out of the top herd bulls and donor cows that exist.

On the semen front, in addition to the lineup of proven revenue producing Herd Sires, as mentioned before this is the first chance to acquire semen on the newest set of bulls to come from Bruneau. In addition, we are featuring semen on the newest National Champion Bull, Lifetime, that was the Grand Champion Polled Bull this past year at the Western States Hereford Show.

The format of this event is a little different. It will be a live auction held exclusively online with LiveAuctions.tv. All bidders will need to get registered online prior to the auction. We will begin promptly at 4:00 pm MT. This sale is scheduled in a fashion to allow for timely transfer for Spring breeding season. All embryos will be stored at Hoffman A.I. Breeders and buyers will facilitate shipping via them.

If at any time you have questions about this offering, please feel free to contact myself, Guy or Kyle. We look forward to seeing you online on March 2nd!

Justin B. Stout
Sale Manager
913.645.5136



31058 Colyer Road, Bruneau, ID 83604
GUY cell: 208-599-0340
KYLE cell: 208-250-3924
email: guy@hereford.com • www.hereford.com

SALE FORMAT

Live auction held exclusively on LiveAuctions.tv. It is recommended all buyers register for a bidder number online before the start of the auction. For questions, contact Katie at 208.599.2962 or tech support at 682.816.4900.

SALE DAY PHONES

| | |
|----------------------|--------------|
| Justin B. Stout..... | 913.645.5136 |
| Kyle Colyer | 208.250.3924 |
| Guy, mobile | 208.599.0340 |
| Katie Colyer | 208.599.2962 |
| Sherry Colyer..... | 208.599.0780 |
| Eric Eldridge | 541.619.7353 |
| Cruz Colyer | 208.749.3915 |

AUCTIONEERS

| | |
|----------------------|--------------|
| Justin B. Stout..... | 913.645.5136 |
| Kyle Colyer | 208.250.3924 |

SALE TERMS & CONDITIONS

GUARANTEE: For all embryo lots consisting of three (3) or four (4) embryos, there is a one (1) pregnancy guarantee. For embryo lots consisting of five (5) or more embryos, there is a two (2) pregnancy guarantee if the embryos are implanted by a certified embryologist.

TERMS: All genetics sell under the standard terms & conditions of the American Hereford Association and American Angus Association, respectively.

SHIPPING: All frozen genetics will ship from Hoffman AI Breeders (435) 753-7883. At the conclusion of the auction, invoices will be sent out. Once the invoice is paid, the embryos will be released. Buyers will then contact Hoffman AI Breeders to arrange shipment. Buyers will be responsible for all shipping costs.



Colyer
HEREFORDS & ANGUS

Spring Frozen Sale

MONDAY, MARCH 2, 2026

4:00 P.M. M.S.T.

Live online only at LiveAuctions.tv

LiveAuctions.TV

HEREFORD

Reference Sires ...



C ARLO 2135 ET



C REIGN MAKER 3210 ET



C CUDABELLE 2111



C GKB GUARDIAN 1015 ET



C BARRACUDA 0114 ET



C DENALI 2105



SHF LEGION H315 L060



KJ 753D TOMAHAWK 605K ET



CC 133J 25K LIFETIME 15M



NJW 98S R117 RIBEYE 88X ET



C BH PATTON 4196 ET



CH PREMIER 233 ET



CHURCHILL W4 SHERMAN 2157K ET



EF BEEF BR VALIDATED B413



C KEY WEST 0065



INNISFAIL WHR X651/723 4013 ET



C 1015 BLAIR 3005



C CHARLIE KIRK 5141

\$310,000 selling full sib to mating.



C CHARLIE KIRK 5141

\$310,000 selling full sib to mating.



C 88X RIBEYE LADY 2052

Granddam

1

FOUR IVF SEXED FEMALE EMBRYOS

Polled
Hereford
Female

AHA# 44471060

DOB 12.30.2022

C REIGN MAKER 3210 ET

C 1015 BLAIR 3005

GREEN JCS MAKERS MARK 229G ET

C 88X NOTICE ME 1311 ET

C GKB GUARDIAN 1015 ET

C 2052 LADY BLACK HAWK 8300 ET

| | CED | BW | WW | YW | MM | SCR | REA | MARB | BMIS | CHBS |
|------|-----|-----|----|-----|----|-----|------|------|------|------|
| SIRE | 5.2 | 1.4 | 68 | 102 | 32 | 1.3 | 0.86 | 0.09 | 517 | 120 |
| DAM | 1.0 | 4.3 | 81 | 127 | 32 | 1.7 | 0.66 | 0.58 | 461 | 202 |

What a way to lead off! Blair 3005 is among the newest set of donors in the Colyer program. She has been a standout since birth as she ratioed 113 at weaning & 116 at a year. As she entered production, she continued to standout as she ratioed 134 on her first calf, and oh by the way, that calf is C CHARLIE KIRK 5141 the \$310,000 selling bull at the 2026 National Western Hereford Sale! This Guardian daughter goes back to maybe the top 88X daughter ever to walk Colyer's pastures, 2052. With curve bending growth, maternal, & carcass numbers, she's right at breed avg. for calving ease & in the top 11% for her stayability index.

Blair 3005 was the \$70,000 selection from Lindskov's LT Ranch in the 2025 Fall Female Sale for half interest. This progeny produced from this mating will be full sibs to the Charlie Kirk, and represents the newest Colyer genetics anywhere in the country outside of Bruneau.



C 8140 LADY HAWK 1288 ET

C SHR 2111 TOHONO 4130
Son of C 8140 Lady Hawk 1288 ETC CJC BELLE AIR LASS 8140 ET
Dam of C 8140 Lady Hawk 1288 ET

REF

C 8140 LADY HAWK 1288 ET

Polled
Hereford
FemaleC 4212 BLACK HAWK 7057 ET
C BLACK HAWK DOWN ET
C 95T LADY TRUST 4212 ET

AHA# 44293645

BR BELLE AIR 6011

DOB 08.27.2021

C CJC BELLE AIR LASS 8140 ET
C CJC 89T MISS MILES 4264 ET

| | CED | BW | WW | YW | MM | SCR | REA | MARB | BMI\$ | CHB\$ |
|-----|-----|-----|----|-----|----|-----|------|------|-------|-------|
| EPD | 3.0 | 3.7 | 72 | 111 | 32 | 1.3 | 0.82 | 0.40 | 382 | 192 |

Another young donor in this program, 1288 is proving herself rapidly as her first calf, C SHR 2111 TOHONO 4130, was named Reserve Champion Polled Bull at the 2026 National Western Stock Show. Her donor dam, 8140, is a full sister to the great Belle Heir bull, and 1288 is a flush sister to another tremendous donor female for Colyer's, 1262. 1288 is among the breed elites for carcass & CHB while continuing exceptional growth and moderate calving ease. It's rare to be able to tap into females that're backed by multiple generations of high producing donors...1288 is that very thing.

2

FOUR IVF EMBRYOS

SHF HOUSTON 0287 H086
77 MARVEL 12H L32 ET
BF 4013 POSH 12H ET

Marvel is one of the newest, most exciting outcross sires in the Colyer program. His semen has been highly sought after in just the couple of times it's been offered. The resulting progeny from this mating will be double bred for carcass, growth & maternal.

| | CED | BW | WW | YW | MM | SCR | REA | MARB | BMI\$ | CHB\$ |
|------|-----|-----|----|-----|----|-----|------|------|-------|-------|
| SIRE | 2.8 | 3.6 | 87 | 146 | 27 | 1.5 | 0.97 | 0.38 | 385 | 196 |
| DAM | 3.0 | 3.7 | 72 | 111 | 32 | 1.3 | 0.82 | 0.40 | 382 | 192 |

3

FOUR IVF EMBRYOS

CHURCHILL RED THUNDER 133J ET
CC 133J 25K LIFETIME 15M
CC001271CPRISCILLA EMERIE25KET

The most recent National Champion for Colyer's, Lifetime won Reno this past December. Another outcross sire, he offers over \$500 for his BMI while keeping strong carcass numbers & a huge REA.

| | CED | BW | WW | YW | MM | SCR | REA | MARB | BMI\$ | CHB\$ |
|------|-----|-----|----|-----|----|-----|------|------|-------|-------|
| SIRE | 3.1 | 2.8 | 60 | 92 | 45 | 1 | 1.15 | 0.21 | 505 | 150 |
| DAM | 3.0 | 3.7 | 72 | 111 | 32 | 1.3 | 0.82 | 0.40 | 382 | 192 |

4

THREE IVF EMBRYOS

C BARRACUDA 0114 ET
C CUD BELLE 2111
C LADY BELL ADVANCE 0053

Great opportunity as this is a full sib mating to the Reserve Denver Champion Tohono. Cuda Belle progeny have really turned heads in the breed as a group of sons made up the Pen of 5 Reserve Champion Bulls at Cattlemen's Congress for Dry Creek Farms, that were embryos from the Colyer program.

| | CED | BW | WW | YW | MM | SCR | REA | MARB | BMI\$ | CHB\$ |
|------|------|------|----|-----|----|-----|------|------|-------|-------|
| SIRE | 10.7 | -1.5 | 55 | 88 | 41 | 0.5 | 0.11 | 0.31 | 425 | 130 |
| DAM | 3.0 | 3.7 | 72 | 111 | 32 | 1.3 | 0.82 | 0.40 | 382 | 192 |



C BAR ONE 1326 BAILEE 0226 ET

BR BAILEE 1066 ET
Dam of C Bar
One 1326 Bailee
0226 ETC PRH 0226 BELLA 4216 ET
Daughter of C Bar One 1326 Bailee 0226 ETC PRH JOLENE 4231 ET
Daughter of C Bar One 1326 Bailee 0226 ET

REF

C BAR ONE 1326 BAILEE 0226 ET

Horned
Hereford
Female

TFR KU ROLL THE DICE 1326

STAR TCF LOCK-N-LOAD 300W ET

LH LANGFORD LADY 0253 ET

AHA# 44123044

DM BR SOONER

DOB 02.19.2020

BR BAILEE 1066 ET

BR GABRIELLE 5082

| | CED | BW | WW | YW | MM | SCR | REA | MARB | BMI\$ | CHBS |
|-----|------|-----|----|-----|----|-----|------|------|-------|------|
| EPD | -3.5 | 5.1 | 66 | 107 | 32 | 0.7 | 0.71 | 0.06 | 298 | 157 |

A touch of outcross mating on this Bailee daughter, 0226 continues as one of the hottest young donors at the Colyer program. She was the top seller in 2020 at their Female Sale when a donor interest sold to Potter Herefords. 0226 was then named Grand Champion Horned Female in 2022 at the NWSS. Her first calves have solidified her status as a big time donor, with two daughters by Cuda Belle selling for \$85,000 & \$17,500 in the 2024 Fall Female Sale. One of those daughters was campaigned in several National shows in 2025, winning her division everywhere she went most recently this January at the NWSS. Big time growth and power in this female, these four matings will yield big time progeny with huge revenue potential.

5

THREE IVF EMBRYOS

CHURCHILL RED THUNDER 133J ET
CC 133J 25K LIFETIME 15M
CC001271CPRISCILLA EMERIE25KET

Great phenotypic mating combining 0226 & National Champion Lifetime. Progeny will have elite growth.

| | CED | BW | WW | YW | MM | SCR | REA | MARB | BMI\$ | CHBS |
|------|------|-----|----|-----|----|-----|------|------|-------|------|
| SIRE | 3.1 | 2.8 | 60 | 92 | 45 | 1.0 | 1.15 | 0.21 | 505 | 150 |
| DAM | -3.5 | 5.1 | 66 | 107 | 32 | 0.7 | 0.71 | 0.06 | 298 | 157 |

6

THREE SEXED FEMALE IVF EMBRYOS

SHF RIB EYE M326 R17
NJW 98S R117 RIBEYE 88X ET
NJW 9126J DEW DOMINO 98S

Foundation maternal mating! Sexed female embryos sired by the immortal maternal sire, 88X. These daughters will be top producers anywhere.

| | CED | BW | WW | YW | MM | SCR | REA | MARB | BMI\$ | CHBS |
|------|------|-----|----|-----|----|-----|------|------|-------|------|
| SIRE | 8.5 | 1.2 | 51 | 73 | 31 | 0.8 | 0.2 | 0.38 | 382 | 103 |
| DAM | -3.5 | 5.1 | 66 | 107 | 32 | 0.7 | 0.71 | 0.06 | 298 | 157 |

7

THREE IVF EMBRYOS

CHURCHILL W4 SHERMAN 2157K ET
C BH PATTON 4196 ET
C BLACK HAWK LASS 8019

Sired by the lead bull in the 2025 Grand Champion Pen of 3 Bulls, Patton. He is widely regarded as the top Sherman son to sell in 2025 when he was selected by Bowling Ranch, Newkirk, OK.

| | CED | BW | WW | YW | MM | SCR | REA | MARB | BMI\$ | CHBS |
|------|------|-----|----|-----|----|-----|------|------|-------|------|
| SIRE | 7.6 | 0.4 | 57 | 91 | 31 | 1.2 | 0.67 | 0.41 | 473 | 165 |
| DAM | -3.5 | 5.1 | 66 | 107 | 32 | 0.7 | 0.71 | 0.06 | 298 | 157 |

8

FOUR IVF EMBRYOS

SHF HEADSTRONG 0287 H315 ET
SHF LEGION H315 LOGO
SHF CHEER 051 J175

Another outcross bull for the Colyer program, Legion was their pick in 2024 from Sandhill Farms. With 12 traits in the top 10% of the breed, this mating will combine phenotypic prowess with a curve bending set of EPDs.

| | CED | BW | WW | YW | MM | SCR | REA | MARB | BMI\$ | CHBS |
|------|------|-----|----|-----|----|-----|------|------|-------|------|
| SIRE | 9.8 | 2.1 | 78 | 122 | 43 | 2.2 | 0.89 | 0.36 | 487 | 160 |
| DAM | -3.5 | 5.1 | 66 | 107 | 32 | 0.7 | 0.71 | 0.06 | 298 | 157 |



SULL DIANA 5355C ET



C D87 DIANA 5211 ET
Daughter of SULL
Diana 5355C ET



C CLASSY DIANA 0128 ET
Daughter of SULL Diana 5355C ET



C 5355C BELLE AIR 1085
Son of SULL Diana 5355C ET

REF

SULL DIANA 5355C ET

Horned
Hereford
Female

C MILES MCKEE 2103 ET

NJW 98S R117 RIBEYE 88X ET

C NOTICE ME ET

AHA# 43620014

DOB 02.16.2015

TCC MS DIANA 01

CRR ABOUT TIME 743

TCC MISS SHELBY 82 ET

| | CED | BW | WW | YW | MM | SCR | REA | MARB | BMI\$ | CHBS |
|-----|-----|-----|----|----|----|-----|-----|------|-------|------|
| EPD | 1.2 | 3.5 | 42 | 64 | 29 | 0.7 | 0.7 | 0.12 | 419 | 138 |

9

FOUR SEXED FEMALE IVF EMBRYOS

EXR BENCHMARK 8240 ET

KJ 753D TOMAHAWK 605K ET

KJ BJ 686Z CHER 753D ET

The progeny of these sexed female embryos are destined for the backdrop.
The look and style produced will be second to none.

| | CED | BW | WW | YW | MM | SCR | REA | MARB | BMI\$ | CHBS |
|------|-----|-----|----|-----|----|-----|------|------|-------|------|
| SIRE | 4.2 | 2.3 | 73 | 115 | 31 | 1.3 | 1.04 | 0.34 | 447 | 160 |
| DAM | 1.2 | 3.5 | 42 | 64 | 29 | 0.7 | 0.7 | 0.12 | 419 | 138 |

10

FOUR IVF EMBRYOS

C BH PATTON 4196 ET

CHURCHILL W4 SHERMAN 2157K ET

C BLACK HAWK LASS 8019

The first Patton calves are hitting the ground this Spring, and are going to be excellent maternal prospects with high calving ease and carcass merit.

| | CED | BW | WW | YW | MM | SCR | REA | MARB | BMI\$ | CHBS |
|------|-----|-----|----|----|----|-----|------|------|-------|------|
| SIRE | 7.6 | 0.4 | 57 | 91 | 31 | 1.2 | 0.67 | 0.41 | 473 | 165 |
| DAM | 1.2 | 3.5 | 42 | 64 | 29 | 0.7 | 0.7 | 0.12 | 419 | 138 |

11

FOUR IVF EMBRYOS

SHF LEGION H315 L060

SHF HEADSTRONG D287 H315 ET

SHF CHEER 051 J175

Mating 5355C to one of the hottest young performance bulls in the breed will yield an excellent combination of style and an EPD profile. Sons & daughters of this mating will be highly sought after.

| | CED | BW | WW | YW | MM | SCR | REA | MARB | BMI\$ | CHBS |
|------|-----|-----|----|-----|----|-----|------|------|-------|------|
| SIRE | 9.8 | 2.1 | 78 | 122 | 43 | 2.2 | 0.89 | 0.36 | 487 | 160 |
| DAM | 1.2 | 3.5 | 42 | 64 | 29 | 0.7 | 0.7 | 0.12 | 419 | 138 |



C 7057 LADY BLACK HAWK 1257

3/4 sister to C Black Hawk Lass 8064



C 7057 LADY HAWK 9114

Maternal sister to C Black Hawk Lass 8064

12 FOUR EMBRYOS

Horned
Hereford
Female

CH PREMIER 233 ET

KLD RW MARKSMAN D87 ET

CH MS ADELIDA 853 ET

AHA# 43889931

C BLACK HAWK DOWN ET

DOB 01.09.2018

C BLACK HAWK LASS 8064

C MISS MILES MCKEE 6231

| | CED | BW | WW | YW | MM | SCR | REA | MARB | BMI\$ | CHBS |
|------|------|-----|----|-----|----|-----|------|-------|-------|------|
| SIRE | -1.4 | 4.7 | 74 | 116 | 29 | 0.4 | 0.94 | -0.19 | 297 | 107 |
| DAM | 3.9 | 3.6 | 53 | 77 | 36 | 0.6 | 0.36 | 0.22 | 321 | 124 |

8064 is a high capacity, easy fleshing cow with a model udder. She's been a solid producer posting progeny ratios of 4@101 for WW & 4@104 for YW. With a balanced set of EPDs she combines two maternal greats in this program, Miles McKee and Bailee. This mating to the 2024 Cattlemen's Congress Reserve Champion Polled Bull will yield excellent phenotype along with enhanced growth & maternal.



C BLACK HAWK LASS 8019

C 2157K SYLVIA
4205 ET\$50,000 full sib
to mating.

C BH PATTON 4196 ET

Full brother to Lot 13 mating

13 FOUR EMBRYOS

Polled
Hereford
Female

CHURCHILL W4 SHERMAN 2157K ET

KCF BENNETT RESOLVE G595

CHURCHILL LADY 079H ET

AHA# 43889890

C BLACK HAWK DOWN ET

DOB 01.04.2018

C BLACK HAWK LASS 8019

C 88X RIBEYE LADY 6245

| | CED | BW | WW | YW | MM | SCR | REA | MARB | BMI\$ | CHBS |
|------|-----|-----|----|-----|----|-----|------|------|-------|------|
| SIRE | 3.2 | 0.8 | 63 | 102 | 26 | 1 | 1.19 | 0.49 | 453 | 190 |
| DAM | 8.6 | 1.4 | 49 | 72 | 32 | 0.5 | 0.16 | 0.37 | 462 | 115 |

8019 stacks generations of proven donors in her pedigree. Going all the way back, her maternal granddam is a daughter of the immortal 440P donor female of Cooper's. The 440P bred females have been some of the most sought-after commodities in the Hereford breed. Last Fall in their Female Sale, half interest in a daughter by Sherman sold for \$50,000. At the 2024 Female Sale, a half embryo interest in a daughter sold for \$19,000. Her first calf was none other than the great Key West bull who commanded \$80,000 for half interest in 2021. She's also the dam of another great Herd Sire, C BH Patton 4196, being used heavily by Colyer & Bowling Ranch after he sold for \$57,500 in 2025. 8019 has been a great young donor with a perfect udder & design. With 45 progeny on record, she's posted a nurse ratio of 4@108 and production IMF ratio of 15@104. The resulting progeny of this mating will be full sibs to the great C BH Patton 4196 ET herd sire.



C 6078 BONNIE BELLE 9030 ET



C 9030 GUARDIAN 2259 ET
*Daughter of C 6078
 Bonnie Belle 9030 ET*



C 8105 SHERMAN 4380 ET
Full sib to Lot 15 mating.

14 THREE EMBRYOS

Polled
 Hereford
 Female
 AHA# 44019087
 DOB 01.04.2019

KCF BENNETT RESOLVE G595
 CHURCHILL W4 SHERMAN 2157K ET
 CHURCHILL LADY 079H ET
 BR BELLE AIR 6011
C 6078 BONNIE BELLE 9030 ET
 C 88X ENCORE LADY 6078

A great granddaughter of the 1290 donor, 9030 is another young donor that is off to a great start. In the Spring of 2024, a son sold for \$41,000 in their Bull Sale, and a daughter of her first flush sold for \$19,000 in the Fall 2023 Female Sale. With 12 traits in the top 10% of the breed including a huge MARB number, she's posted progeny ratios of 3@106 for WW & 2@101 for YW. These progeny by Sherman will be high calving ease with big growth and a huge \$CHB.

| | CED | BW | WW | YW | MM | SCR | REA | MARB | BMI\$ | CHBS |
|-------------|-----|------|----|-----|----|-----|------|------|-------|------|
| SIRE | 3.2 | 0.8 | 63 | 102 | 26 | 1.0 | 1.19 | 0.49 | 453 | 190 |
| DAM | 3.3 | -0.6 | 54 | 80 | 41 | 2.0 | 0.33 | 0.67 | 513 | 159 |



C BAR1 BAILEES DOUBLE MILES ET



C 159H BAILEE 5209 ET
*Daughter of
 C BAR1 Bailees
 Double Miles ET*



C 8105 SHERMAN 4380 ET
Full sib to Lot 15 mating.

15 FOUR EMBRYOS

Polled
 Hereford
 Female
 AHA# 43889970
 DOB 01.04.2019

KCF BENNETT RESOLVE G595
 CHURCHILL W4 SHERMAN 2157K ET
 CHURCHILL LADY 079H ET
 C DOUBLE YOUR MILES 6077 ET
C BAR1 BAILEES DOUBLE MILES ET
 BR BAILEE 1066 ET

The high selling female in the 2018 Fall Female Sale, Bailees Double Miles was named the Grand Champion Polled Female at 2020 FWSS. In the 2021 Fall Female Sale, she had two daughters sell for \$22,500 & \$17,000. In the 2022 Bull Sale, a son by Genesis sold for \$40,000 to Waibel Ranch. Most recently, a daughter by Liberty sold for \$18,000 in the Fall of 2025. This mating to Sherman will yield progeny with high revenue potential. Four full sibs to this mating are features in the Fall division of the 2026 Spring Bull Sale.

| | CED | BW | WW | YW | MM | SCR | REA | MARB | BMI\$ | CHBS |
|-------------|-----|-----|----|-----|----|-----|------|-------|-------|------|
| SIRE | 3.2 | 0.8 | 63 | 102 | 26 | 1.0 | 1.19 | 0.49 | 453 | 190 |
| DAM | 1.9 | 3.6 | 53 | 75 | 19 | 0.5 | 0.51 | -0.18 | 219 | 70 |



C 4038 CANADA LASS 8257 ET



C 8257 VALERIE 1030 ET

Daughter of C 4038 Canada Lass 8257 ET

C 88X NOTICE ME 1311 ET
Granddam of C 4038
Canada Lass 8257 ETC 3125 VALERIE 5001 ET
Grandaughter of C 4038 Canada Lass 8257 ET

16

FOUR EMBRYOS

Polled
Hereford
FemaleAHA# 43890099
DOB 02.22.2018LOEWEN GENESIS G16 ET
C GKB GUARDIAN 1015 ET
C CJC BELLE AIR LASS 8037 ET
WLB MR CANADA 10Z 15B
C 4038 CANADA LASS 8257 ET
C 105Y LADY DOMINO 4038

| | CED | BW | WW | YW | MM | SCR | REA | MARB | BMIS | CHBS |
|------|-----|-----|----|-----|----|-----|------|-------|------|------|
| SIRE | 2.2 | 4.3 | 79 | 118 | 36 | 1.9 | 0.55 | 0.54 | 514 | 203 |
| DAM | 2.1 | 2.4 | 62 | 94 | 43 | 0.5 | 0.38 | -0.09 | 346 | 100 |

One of the most productive daughters of the immortal 4038 donor, 8257 sports a picture-perfect udder. In her short career in production, she's posted progeny ratios of 5@110 for WW & 5@102 for YW. In addition, 8257 has produced a top young donor for the Colyer program, C 8257 Valerie 1030 ET. Mating 8257 to the \$325,000 Guardian brings power & performance along with excellent carcass. Several full sibs to this mating are highlights of the Fall 2025 calf crop. This is one of only two Guardian matings in the entire offering.



C 8108 BELLE AIR LASS 0094

C GENESIS BELLE 2108
Daughter of C 8108
Belle Air Lass 0094C BK 0094 GUARDIAN 3284 ET
Full sib to Lot 17 embryos.

REF

C 8108 BELLE AIR LASS 0094

Polled
Hereford
Female

AHA# 44122922

DOB 01.07.2020

BR BELLE AIR 6011

C 4038 BELL AIR 8108 ET

C 105Y LADY DOMINO 4038

C ETF WILDCAT 4248 ET

C R111 WILDCAT LADY 7316 ET

-S LADY ADVANCE 176L R111 ET

| | CED | BW | WW | YW | MM | SCR | REA | MARB | BMI\$ | CHBS |
|-----|-----|-----|----|-----|----|-----|------|------|-------|------|
| EPD | 4.8 | 3.0 | 66 | 108 | 39 | 1.5 | 0.83 | 0.44 | 475 | 166 |

0094 stems from the great R111 donor cow, and was a high seller in 2022 when half interest sold to Bill King Ranch for \$28,000. An excellent producer, she has posted progeny ratios of 3@111 for WW and 3@105 for YW. Her first ET daughters entered production last Spring and are making excellent mothers. With 7 traits in the top 10% of the breed, all of these mating options will yield highly marketable progeny.

17

THREE IVF EMBRYOS

LOEWEN GENESIS G16 ET

C GKB GUARDIAN 1015 ET

C CJC BELLE AIR LASS 8037 ET

A full sister to this mating sold for \$18,000 last Fall in the Female Sale. With the first Guardians in production, they are proving to be excellent mothers.

| | CED | BW | WW | YW | MM | SCR | REA | MARB | BMI\$ | CHBS |
|------|-----|-----|----|-----|----|-----|------|------|-------|------|
| SIRE | 2.2 | 4.3 | 79 | 118 | 36 | 1.9 | 0.55 | 0.54 | 514 | 203 |
| DAM | 4.8 | 3.0 | 66 | 108 | 39 | 1.5 | 0.83 | 0.44 | 475 | 166 |

18

FOUR IVF EMBRYOS

EFBEEF TFL U208 TESTED X651 ET

EFBEEF BR VALIDATED B413

EFBEEF 4R THYRA Y865

Validated has become one of the most impactful carcass sires in recent history. Mating him to this highly maternal donor cow will yield the best of both worlds...tons of maternal & carcass capabilities.

| | CED | BW | WW | YW | MM | SCR | REA | MARB | BMI\$ | CHBS |
|------|-----|-----|----|-----|----|-----|------|------|-------|------|
| SIRE | 2.6 | 1.3 | 63 | 97 | 34 | 1.1 | 0.90 | 1.33 | 626 | 236 |
| DAM | 4.8 | 3.0 | 66 | 108 | 39 | 1.5 | 0.83 | 0.44 | 475 | 166 |

19

FOUR IVF EMBRYOS

SHF HEADSTRONG D287 H315 ET

SHF LEGION H315 L060

SHF CHEER 051 J175

Another big time performance sire, 0094 will phenotypically compliment Legion very well. These will be among the first of this mating anywhere.

| | CED | BW | WW | YW | MM | SCR | REA | MARB | BMI\$ | CHBS |
|------|-----|-----|----|-----|----|-----|------|------|-------|------|
| SIRE | 9.8 | 2.1 | 78 | 122 | 43 | 2.2 | 0.89 | 0.36 | 487 | 160 |
| DAM | 4.8 | 3.0 | 66 | 108 | 39 | 1.5 | 0.83 | 0.44 | 475 | 166 |



C 1008 MILKY WAY 6133 ET



C BLACK HAWK LASS 8013

Donor, daughter of
C 1008 Milky Way 6133 ET



C 6133 LADY HAWK 9216

Daughter of C 1008 Milky Way 6133 ET



C CANDY CANE 4030 ET

Full sister to C 1008 Milky
Way 6133 ET



C MILKY WAY 0061 ET

Donor, daughter of C 1008 Milky Way 6133 ET



C 6133 FRONTIER LADY 0132 ET

Donor, daughter to C 1008 Milky Way 6133 ET

20

FOUR EMBRYOS

Polled
Hereford
Female

AHA# 43672941

DOB 01.14.2016

C DENALI HD 2105 ET

LOEWEN GENESIS 616 ET

C 88X NOTICE ME 1311 ET

NJW 98S R117 RIBEYE 88X ET

C 1008 MILKY WAY 6133 ET

HRH PAY IN GOLD 1008X ET

| | CED | BW | WW | YW | MM | SCR | REA | MARB | BMIS | CHBS |
|------|------|-----|----|-----|----|-----|------|------|------|------|
| SIRE | -2.9 | 5.3 | 77 | 130 | 39 | 1.5 | 1.10 | 0.22 | 509 | 184 |
| DAM | -1.6 | 2.5 | 51 | 67 | 41 | 1.0 | 0.65 | 0.17 | 316 | 104 |

A full sister to Eye Candy, Candy Cane, Snickers and Cotton Candy, Milky Way is the most prolific of the sisters, and has been an outstanding donor female. Super feminine in her look, she was Bowling Ranch's pick of the ET interest lot in the 2019 Female Sale. Since she's entered production, she's posted ratios of 2@115 for WW, 3@103 for YW and 11@105 for REA. Her first calf also made her way to the donor pen. A daughter was a high seller in 2020 at \$15,000 and her son's have been favorites each year at the Bull Sale. This will be one of the last opportunities to acquire Milky Way embryos, and this mating to Arlo's flush brother is a can't miss.



C 105Y LADY DOMINO 4038

C 4038 G16 GENESIS GAL 1005 ET
Daughter of C 105Y
Lady Domino 4038C BARRACUDA 0014
Son of C 105Y Lady Domino 4038

REF

C 105Y LADY DOMINO 4038

Horned
Hereford
Female

CL 1 DOMINO 105Y

CL 1 DOMINO 929W

CL 1 DOMINETTE 9140W 1ET

AHA# 43469644

NJV 98S R117 RIBEYE 88X ET

DOB 01.06.2014

C 88X NOTICE ME 1311 ET

C NOTICE ME ET

The first calf by Notice Me 1311, 4038 is a moderate framed, deep bodied female with a great udder and lots of pigment. ½ interest in her sold for \$97,500 to Bowling Herefords in 2017. Perhaps the most impactful 1311 daughter, she has 76 progeny on record to date. In 2019, two full brothers out of 4038 sold for \$40,000 each, and her sons have been among the top sellers in the Colyer Bull Sale. Likewise, her daughters are some of the most sought after commodities in the Fall Female Sales each and every year.

| | CED | BW | WW | YW | MM | SCR | REA | MARB | BMI\$ | CHBS |
|-----|-----|-----|----|----|----|-----|------|------|-------|------|
| EPD | 5.8 | 0.1 | 50 | 77 | 43 | 0.4 | 0.27 | 0.25 | 389 | 106 |

21

THREE IVF EMBRYOS

C KEY WEST 0065

C CJC BELLE HEIR ET

C BLACK HAWK LASS 8019

Key West has established himself as an exceptional maternal prospect. This mating is designed to produce daughters as the pedigree will feature all the breed greats in addition to Notice Me...105Y, 88X, Belle, Bailee, & 440P.

| | CED | BW | WW | YW | MM | SCR | REA | MARB | BMI\$ | CHBS |
|------|-----|-----|----|-----|----|-----|------|------|-------|------|
| SIRE | 6.9 | 4.1 | 67 | 105 | 29 | 1 | 0.78 | 0.34 | 601 | 172 |
| DAM | 5.8 | 0.1 | 50 | 77 | 43 | 0.4 | 0.27 | 0.25 | 389 | 106 |

22

FIVE IVF EMBRYOS

EFBEEF TFL U208 TESTED X651 ET
INNISFAIL WHR X651/723 4013 ET
INNISFAIL P230 T723

This mating features an outcross featuring the 4013 sire. To build on 4038's calving ease & maternal, 4013 adds big time growth & carcass performance. Progeny here will check every box.

| | CED | BW | WW | YW | MM | SCR | REA | MARB | BMI\$ | CHBS |
|------|-----|-----|----|-----|----|-----|------|------|-------|------|
| SIRE | 0.6 | 4.5 | 82 | 129 | 25 | 1.7 | 0.26 | 0.57 | 384 | 165 |
| DAM | 5.8 | 0.1 | 50 | 77 | 43 | 0.4 | 0.27 | 0.25 | 389 | 106 |



C 2052 DOMINETTE 8204 ET

23 FOUR EMBRYOS

Horned
Hereford
Female

C CUD BELLE 2111

C BARRACUDA 0114 ET

C LADY BELL ADVANCE 0053

AHA# 43890062

CL 1 DOMINO 215Z

DOB 02.03.2018

C 2052 DOMINETTE 8204 ET

C 88X RIBEYE LADY 2052

| | CED | BW | WW | YW | MM | SCR | REA | MAR | BMI | CHB |
|------|------|------|----|----|----|-----|------|------|-----|-----|
| SIRE | 10.7 | -1.5 | 55 | 88 | 41 | 0.5 | 0.11 | 0.31 | 425 | 130 |
| DAM | -4.4 | 4.5 | 63 | 98 | 34 | 1.1 | 0.76 | 0.47 | 469 | 160 |

Another young donor out of one of Colyer's best, 2052, this 215Z daughter ratioed 110 on her first son by Belle Heir. In addition she's posted a progeny IMF ratio of 112. Expect highly maternal progeny from this mating. As mentioned earlier, Cuda Belle have really begun to hit the radar. A full brother to this mating is one of the featured Fall bulls in the 2026 Spring Bull Sale with a great set of numbers.



C 942 4038 BELLA 1120



C BAR1 1120 REIGN MAKER 5193 ET

Full sib to Lot 24 mating

24 FOUR EMBRYOS

Horned
Hereford
Female

C REIGN MAKER 3210 ET

GREEN JCS MAKERS MARK 2296 ET

C 88X NOTICE ME 1311 ET

AHA# 44257639

CL 1 DOMINO 942G

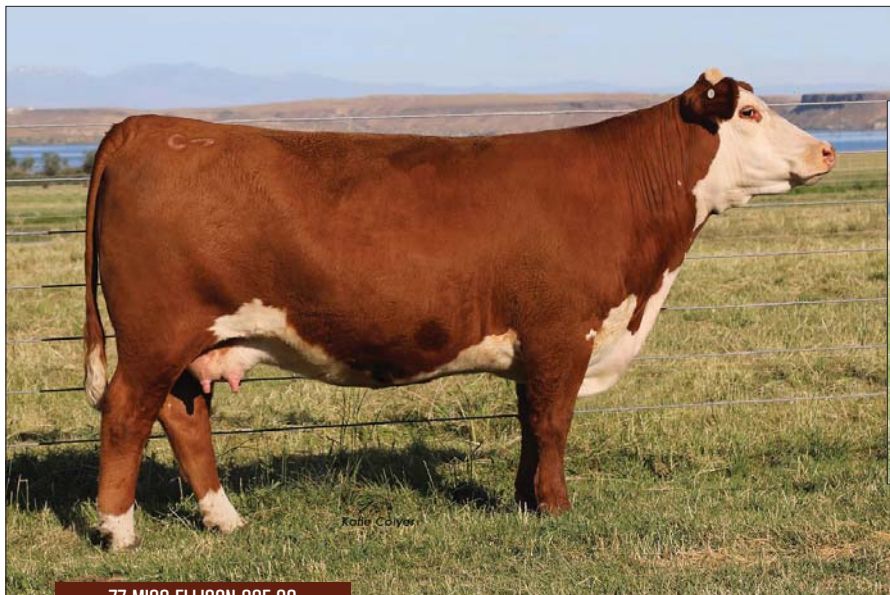
DOB 01.10.2021

C 942 4038 BELLA 1120

C 4038 BELLA 9164 ET

| | CED | BW | WW | YW | MM | SCR | REA | MAR | BMI | CHB |
|------|-----|-----|----|-----|----|-----|------|------|-----|-----|
| SIRE | 5.2 | 1.4 | 68 | 102 | 32 | 1.3 | 0.86 | 0.09 | 517 | 120 |
| DAM | 3.0 | 3.9 | 71 | 113 | 23 | 1.5 | 0.23 | 0.52 | 366 | 165 |

1120 is another young donor in this program, and she earned it by ratioing 107 on her first two calves. Individually, she was a standout as she ratioed 121@WW, 111@YW and 183@IMF. Her dam is a daughter of the great 4038 donor cow. One of 1120's first ET daughters by Sherman sold for \$11,000 in the 2024 Fall Female Sale. A full brother to this mating was a member of Colyer's 2026 National Western Pen and is a big time Herd Sire prospect in their Bull Sale. The first Reign Maker progeny have been a hit every time they get marketed, and the resulting progeny from the mating could be big time revenue producers.



77 MISS ELLISON 28E 2G


77 MISS GRADY 2G 79H
Donor, daughter of 77 Miss Ellison 28E 2G

25 FOUR EMBRYOS

Polled
Hereford
Female

C REIGN MAKER 3210 ET

GREEN JCS MAKERS MARK 229G ET

C 88X NOTICE ME 1311 ET

AHA# 44015689

SHF ELLISON 167Y E149

DOB 01.03.2019

77 MISS ELLISON 28E 2G

77 MISS BIG TIME16B Z23 28E

| | CED | BW | WW | YW | MM | SCR | REA | MARB | BMI\$ | CHBS |
|------|-----|-----|----|-----|----|-----|------|------|-------|------|
| SIRE | 5.2 | 1.4 | 68 | 102 | 32 | 1.3 | 0.86 | 0.09 | 517 | 120 |
| DAM | 2.4 | 3.0 | 67 | 108 | 23 | 1.0 | 0.81 | 0.38 | 441 | 178 |

One of the rare outcross donors in the Colyer program, 2G was their pick from the Big League Genetics sale a few years ago. 2G's first daughter by Grady has become another top donor for this program as she's the dam of many high selling sons & daughters, including Sherman 4202 who topped the 2025 Bull Sale to Bowling Ranch. Colyer's rarely market 2G daughters as they stay in herd. Her first sons were highlights in the 2025 Fall Bull division, averaging just shy of \$10,000. This is another mating to Reign Maker that is a can't miss.



KLD RW MERCY ME D83 ET


C SULL 210 MERCY
ME 5217 ET
Daughter of KLD
RW Mercy Me
D83 ET

C HHR PENDLETON ET
Full sib to Lot 26 mating

26 FOUR EMBRYOS

Horned
Hereford
Female

C ARLO 2135 ET

LOEWEN GENESIS G16 ET

C 88X NOTICE ME 1311 ET

AHA# 43950572

UPS SENSATION 2296 ET

DOB 02.17.2018

KLD RW MERCY ME D83 ET

RW MINDY 3078 6096

| | CED | BW | WW | YW | MM | SCR | REA | MARB | BMI\$ | CHBS |
|------|------|-----|----|-----|----|-----|------|-------|-------|------|
| SIRE | -1.2 | 5.7 | 67 | 107 | 36 | 1.9 | 0.58 | 0.29 | 458 | 162 |
| DAM | 2.5 | 3.5 | 59 | 100 | 31 | 0.9 | 0.82 | -0.16 | 281 | 114 |

Another outcross donor to this program, D83 has produced high sellers in both the Female & Bull Sales. In Oct. 2025, D83 was the dam of three full sisters that averaged \$39,000! In the Fall of '24, a daughter by Belle Heir sold for \$20,000. Perhaps most exciting are the prospects of this mating to Arlo. It's success is about as proven as can be found of any embryo mating. To begin with, a full brother to this mating, C HHR Pendleton ET was a high seller in February of 2025 at \$40,000. From there he went on to be named Reserve Champion Horned Bull last December at the Western States Hereford Show in Reno. Another daughter by Arlo sold for \$36,000 in their 2024 Fall Female Sale.



— C 2052 LADY BLACK HAWK 8336 ET —



C 0114 8336 PEGGY 3185 ET

Daughter of C 2052 Lady Black Hawk 8336 ET



C BELLE HEIR 1114

Son of C 2052 Lady Black Hawk 8336 ET

27

THREE EMBRYOS

Horned
Hereford
Female

C BARRACUDA 0114 ET

BEHM 100W CUDA 504C

C 105Y LADY DOMINO 4038

AHA# 43966944

C BLACK HAWK DOWN ET

DOB 08.25.2018

C 2052 LADY BLACK HAWK 8336 ET

C 88X RIBEYE LADY 2052

Another one of the top daughters of Colyer's donor cow 2052, 8336 got her start as a first calf heifer when Potter Ranch selected her as their \$27,500 donor interest. Last year in their Bull Sale, two ET brothers by Sherman sold for \$9,500 each. This mating to the ABS sire Barracuda will moderate the calving ease while increasing marbling and keeping growth constant.

| | CED | BW | WW | YW | MM | SCR | REA | MARB | BMI\$ | CHBS |
|------|------|------|----|----|----|-----|------|------|-------|------|
| SIRE | 6.9 | -0.5 | 65 | 98 | 43 | 0.7 | 0.38 | 0.45 | 365 | 140 |
| DAM | -0.4 | 4.5 | 60 | 95 | 36 | 1.2 | 0.71 | 0.19 | 466 | 146 |

ANGUS

Reference Sires ...



BOYD SALUTE



CIRCLE L UNIFIED



FF RITO AMBITION



SITZ GENUINE 491L



SITZ FIREBALL 742



CCC TREASURE TESS 0166



C SECURITY SAL 2030

Donor, daughter of CCC Treasure Tess 0166

28 FOUR EMBRYOS

Angus Female
AAA# *19778504
DOB 02.22.2020

BOYD SALUTE
+*YON SALUDA
+*BOYD ABIGALE 6079
+*CONNEALY TREASURE 558H
CCC TREASURE TESS 0166
CCC RENOWN 7060

0166 has been the leading Angus donor and cornerstone for the Colyer program. In 2024, ½ interest in a daughter sold for \$17,000. She's next in a great line as her Renown dam has also been a great donor for this program. In the 2024 Bull Sale, as son sold for \$20,000 to Rees Bros. She's in the top 2% of the breed for both WW & YW with a great Docility EPD. When you take into account her indexes, she's exceptional across the board...\$M, \$W, \$G & \$C. Boyd Salute was the lead bull in the 2025 Champion Pen of 3 Bulls at Cattlemen's Congress and offers elite growth along with his strong index values.

| | CED | BW | WW | YW | MM | SC | REA | MARB | M\$ | W\$ | FS | GS | BS | C\$ |
|------|-----|-----|----|-----|----|------|------|------|-----|-----|-----|----|-----|-----|
| SIRE | 4 | 1.8 | 94 | 157 | 21 | 0.96 | 0.91 | 0.83 | 75 | 90 | 135 | 62 | 198 | 332 |
| DAM | 6 | 1.0 | 93 | 161 | 27 | 1.58 | 0.89 | 0.76 | 87 | 95 | 97 | 64 | 162 | 297 |



COLEMAN DONNA 492

29 FOUR IVF EMBRYOS

Angus Female
AAA# *20969459
DOB 01.23.2024

CIRCLE L UNIFIED
+*A A R ESSENTIAL
+*CIRCLE L LADY 100E
+*COLEMAN RESOURCE 708
+*COLEMAN DONNA 8146
COLEMAN DONNA 492

The newest Angus donor in the pastures in Bruneau is this great daughter of Coleman Donna 8146. 492 is poised to carry on her dam's incredible performance, and this mating to Unified represents the very first offering of this young donor female. Just look at the incredible 111 \$M index this great female has. Unified double stacks maternal with a huge \$M himself, but he fills in the blanks for the rest of the production numbers. Big time spread from calving ease to growth.

| | CED | BW | WW | YW | MM | SC | REA | MARB | M\$ | W\$ | FS | GS | BS | C\$ |
|------|-----|------|----|-----|----|-------|------|------|-----|-----|----|----|-----|-----|
| SIRE | 14 | -1.6 | 83 | 131 | 34 | 1.51 | 0.92 | 0.87 | 109 | 106 | 91 | 67 | 158 | 314 |
| DAM | 5 | -0.1 | 60 | 109 | 27 | -0.36 | 0.03 | 0.57 | 111 | 65 | 79 | 39 | 118 | 264 |



C GROWTH FUND TESS 2155

C E125 ALTERNATIVE 4164
Son of C Growth Fund Tess 2155

30 FOUR EMBRYOS

Angus
Female

AAA# 20366066

DOB 01.31.2020

FF RITO AMBITIOUS

*SEO ULTRA PROVIDER

*RMRK RITA 0237

#*DEER VALLEY GROWTH FUND

C GROWTH FUND TESS 2155

CCC CAPITALIST 7018

2155 is another one of the young donors in the Angus lineup for Colyers, and she brings a solid set of numbers with a huge spread from calving ease to growth, solid carcass with a huge \$M & \$W index. She's a nice sized cow with great structure. This mating to the \$235,000 herd sire FF Rito Ambitious 2B41 brings a tremendous set of growth & carcass numbers along with a whopping \$C figure of \$424. Full brothers to this mating are some of the featured bulls in the 2026 Angus division in the Bull Sale.

| | CED | BW | WW | YW | MM | SC | REA | MARB | M\$ | W\$ | F\$ | G\$ | B\$ | C\$ |
|------|-----|-----|----|-----|----|------|------|------|-----|-----|-----|-----|-----|-----|
| SIRE | 11 | 1.5 | 86 | 148 | 21 | 0.78 | 1.12 | 2.09 | 73 | 78 | 139 | 132 | 271 | 424 |
| DAM | 12 | 0.9 | 83 | 131 | 26 | 1.46 | 0.82 | 0.79 | 86 | 92 | 97 | 59 | 157 | 290 |



SITZ GENUINE 491L

C REPUBLIC LAD 4165
Son of C Exclusive Lass 2156

31 THREE EMBRYOS

Angus
FemaleAAA#
*20366067

DOB 01.31.2022

SITZ GENUINE 491L

+*WOODHILL REALITY

*SITZ HENRIETTA PRIDE 32F

#*MUSGRAVE 316 EXCLUSIVE

C EXCLUSIVE LASS 2156

CCC PLAYBOOK LASS 9029

Another young donor that made her way to the donor pen after ratioing 121 on her first calf by Republic. He sold for \$18,000 last Feb. in their Bull Sale. She is another high \$M female with a well balanced set of EPDs across the board.

| | CED | BW | WW | YW | MM | SC | REA | MARB | M\$ | W\$ | F\$ | G\$ | B\$ | C\$ |
|------|-----|------|----|-----|----|------|------|------|-----|-----|-----|-----|-----|-----|
| SIRE | 8 | -0.8 | 79 | 133 | 25 | 0.68 | 0.97 | 0.98 | 68 | 83 | 117 | 67 | 185 | 308 |
| DAM | 2 | 2.1 | 74 | 121 | 25 | 0.89 | 1.02 | 0.74 | 80 | 76 | 105 | 58 | 163 | 292 |



CCC RENOWN 7060
Dam of C 7060 lady Outcross 1192 ET

32 FOUR EMBRYOS

Angus
 Female

AAA#
 +*20366067

DOB 08.24.2021

SITZ FIREBALL 742M

#*GB FIREBALL 672

*SITZ RACHEL 29J

+*MONTANA OUTCROSS 9077

C 7060 LADY OUTCROSS 1192 ET

CCC RENOWN 7060

Another young donor that goes back to the great Renown 7060 cow. 1192 offers strong growth, great Claw & Angle numbers and good balance to the rest of her EPD profile. The sire of this mating was Colyer's choice this past Spring from Sitz. This Fireball calving ease son is extreme for his \$G & \$C.

| | CED | BW | WW | YW | MM | SC | REA | MARB | M\$ | W\$ | F\$ | G\$ | B\$ | C\$ |
|------|-----|------|----|-----|----|------|------|------|-----|-----|-----|-----|-----|-----|
| SIRE | 13 | -1.9 | 64 | 126 | 16 | 0.38 | 1.0 | 1.75 | 72 | 50 | 108 | 112 | 221 | 359 |
| DAM | 2.0 | 3.0 | 72 | 134 | 29 | 1.76 | 0.19 | 0.44 | 63 | 61 | 92 | 34 | 127 | 228 |

33

CC 133J 25K LIFETIME 15M

Polled Hereford Bull
 DM ALL AROUND 9046 ET
 CHURCHILL RED THUNDER 133J ET
 BR VALIDATED B413 6035 7098
 AHA# 44596357
 DOB 03.02.2024
 /S CASH 00127 ET
 CC001271CPRISCILLA EMERIE25KET
 CCPRISCILLA LADY STOCKMAN 10ET

| | CED | BW | WW | YW | MM | SCR | REA | MARB | BMIS | CHBS |
|-----|-----|-----|----|----|----|-----|------|------|------|------|
| EPD | 3.1 | 2.8 | 60 | 92 | 45 | 1 | 1.15 | 0.21 | 505 | 150 |

One of the newest Herd Sires purchased by the Colyer program is this Red Thunder son, Lifetime. A grandson of the great Validated 7098 cow, Lifetime is one of the few bulls that can combine tremendous phenotype with a set of carcass numbers that are curve bending. Bred by Cache Cattle Co. in Utah, Lifetime was named Grand Champion Polled Bull last December in Reno. He's out of Rod's best cow family going back to the Priscilla cow. In addition he's Homozygous Polled and out of a first calf heifer. Expect this outcross sire to make a huge impact on the Colyer program. Owned with Cache Cattle, Micheli Cattle & GKB Cattle.

Selling semen in groups of 5 units

34

77 MARVEL 12H L32 ET

Polled Hereford Bull
 SHF DAYBREAK Y02 D287 ET
 SHF HOUSTON D287 H086
 SHF MISS 14 20Z D223
 AHA# 44458305
 DOB 04.01.2023
 INNISFAIL WHR X651/723 4013 ET
 BF 4013 POSH 12H ET
 BF GIRL POWER 646 ET

| | CED | BW | WW | YW | MM | SCR | REA | MARB | BMIS | CHBS |
|-----|-----|-----|----|-----|----|-----|------|------|------|------|
| EPD | 2.8 | 3.6 | 87 | 146 | 27 | 1.5 | 0.97 | 0.38 | 385 | 196 |

A exceptional combination of genotype with phenotype, Marvel is the newest outcross sire to enter the Colyer program. Homozygous Polled, he has 6 traits in the top 5% of the breed, and just shy of 1.0 on his Marbling EPD! When you combine that with his exceptional phenotype, you're looking at a game changing herd sire! Owned with Double 7 Ranch & Kester Herefords.

Selling 5 groups of 5 units of semen.

35

C REIGN MAKER 3210 ET

Polled Hereford Bull
 BOYD 31Z BLUEPRINT 6153
 GREEN JCS MAKERS MARK 2296 ET
 JDH AH MERCEDES 11E ET
 AHA# 44475885
 DOB 02.04.2023
 NJW 98S R117 RIBEYE 88X ET
 C 88X NOTICE ME 1311 ET
 C NOTICE ME ET

| | CED | BW | WW | YW | MM | SCR | REA | MARB | BMIS | CHBS |
|-----|-----|-----|----|-----|----|-----|------|------|------|------|
| EPD | 5.2 | 1.4 | 68 | 102 | 32 | 1.3 | 0.86 | 0.09 | 517 | 120 |

The second top selling bull in the 2024 Bull Sale for \$95,000 to Hurricane Hefty Ranch is one with a huge future ahead of him. Out of the foundation donor 1311 and dam of so many impactful herd bulls in the breed including Arlo. 3210 is the next generation to combine an elite phenotype along with an EPD profile that works in any mating situation. As his first calves are just now being merchandised, he is the sire of the \$310,000 selling C Charlie Kirk 5141 ET. He has incredible conception with his semen breeding heifers and donors. He was over 90% on heifers and fertilization on the donors was incredible. This is the first opportunity to acquire sexed female semen on this great bull. Owned with Hurricane Hefty Ranch.

Selling SEXED FEMALE semen in groups of 5 units



CC 133J 25K LIFETIME 15M



77 MARVEL 12H L32 ET



C REIGN MAKER 3210 ET



CL 1 DOMINO 456M 1ET

36

CL 1 DOMINO 456M 1ET

Horned
Hereford
Bull

CL 1 DOMINO 267K 1ET

CL 1 DOMINO 0186H

CL 1 DOMINETTE 719E 1ET

AHA# 44554338

CL 1 DOMINO 5110R

DOB 01.11.2024

CL 1 DOMINETTE 9223G 1ET

CL 1 DOMINETTE 1112Y 1ET

| | CED | BW | WW | YW | MM | SCR | REA | MARB | BMI\$ | CHBS |
|-----|-----|-----|----|----|----|-----|------|------|-------|------|
| EPD | 10 | 0.0 | 58 | 99 | 31 | 1.0 | 0.60 | 0.18 | 471 | 149 |

Line 1 Bull with exceptional calving ease, 456M posted an 815 lbs. actual WW & 1305 act. YW. Awesome CHB figure, he is out of a highly productive dam that is now owned by Buford Ranches in Oklahoma. Great pigment, wide based & deep bodied, 456M represents the L1 maternal shot many programs are searching for. Owned with Buford Ranches, Churchill Cattle Co. & Cooper Herefords.

Selling semen in groups of 5 units



C 79H SHERMAN 4202 ET

37

C 79H SHERMAN 4202 ET

Polled
Hereford
Bull

CHURCHILL W4 SHERMAN 2157K ET

KCF BENNETT RESOLVE G595

CHURCHILL LADY 079H ET

AHA# 44559422

LOEWEN GRADY B42 G15 ET

DOB 01.04.2024

77 MISS GRADY 2G 79H

77 MISS ELLISON 28E 2G

| | CED | BW | WW | YW | MM | SCR | REA | MARB | BMI\$ | CHBS |
|-----|-----|------|----|-----|----|-----|------|------|-------|------|
| EPD | 7.2 | -0.1 | 69 | 109 | 29 | 1.0 | 1.06 | 0.58 | 412 | 206 |

A member of the 2025 National Western Champion Pen, 4202 is a big time calving ease & high carcass Sherman son. A great combination of phenotype and the EPD profile desired for selling commercial sons in 2026, 4202 has a massive spread from his BW to his WW & YW. To add to it, he ranks in the top 1% of the breed for CW, top 2% for REA & MARB, and has a massive \$206 \$CHB figure! 4202 is designed for the 21st Century Beef Business. Owned with Bowling Ranch.

Selling semen in groups of 5 units



C BH PATTON 4196 ET

38

C BH PATTON 4196 ET

Polled
Hereford
Bull

CHURCHILL W4 SHERMAN 2157K ET

KCF BENNETT RESOLVE G595

CHURCHILL LADY 079H ET

AHA# 44559417

C BLACK HAWK DOWN ET

DOB 01.02.2024

C BLACK HAWK LASS 8019

C 88X RIBEYE LADY 6245

| | CED | BW | WW | YW | MM | SCR | REA | MARB | BMI\$ | CHBS |
|-----|-----|-----|----|----|----|-----|------|------|-------|------|
| EPD | 7.6 | 0.4 | 57 | 91 | 31 | 1.2 | 0.67 | 0.41 | 473 | 165 |

Patton might just be the next great one for the Colyer program! He was the lead bull in their 2025 NWSS Grand Champion Pen of Bulls, and he is a maternal brother to the great Key West! Considered by many to be one of the top Sherman son's to date, 4196 is Homozygous Polled and possesses an EPD profile with 11 traits in the top 20% & 6 traits in the top 10% of the breed. Owned with Bowling Ranch.

Selling semen in groups of 5 units

39

C GKB CIMMARON 3125 ET

Horned
Hereford
Bull

H FH ADVANCE 628 ET
ECR 628 ADVANCE 9490 ET
ECR CANDI 5451 ET

AHA# 44471172

DOB 01.10.2023

C MILES MCKEE 2103 ET
C CJC 89T MISS MILES 4264 ET
TH 166 2ON GEMINI 89T

| | CED | BW | WW | YW | MM | SCR | REA | MARB | BMIS | CHBS |
|-----|-----|-----|----|-----|----|-----|------|------|------|------|
| EPD | 4.6 | 4.6 | 63 | 106 | 25 | 1.2 | 0.97 | 0.16 | 379 | 149 |

We haven't seen a bull like Cimmaron achieve this kind of success in a long time. This National Champion swept the major shows where he was the Grand Champion Horned bull in '24 at the Western States Hereford Show, then last January he was Grand Champion at Cattlemen's Congress, the National Western and Fort Worth Stock Show. He began his show career winning Reno as a calf and was the lead bull in the 2024 NWSS Pen of Bulls for Colyer's. He topped Colyer's bull sale in 2024 at \$130,000, selling to GKB Cattle. He was recently named Champion of the North American and Champion of the World. His dam is the mother of Belle Heir, Real Deal and 8037, the mother of Guardian. Owned with GKB Cattle.

Selling semen in groups of 5 units.



C GKB CIMMARON 3125 ET

40

C ARLO 2135 ET

Polled
Hereford
Bull

NJW 79Z Z311 ENDURE 1730 ET
LOEWEN GENESIS G16 ET
LOEWEN 77 48 MISS 344N 4RB42ET

AHA# 44359827

DOB 01.16.2022

NJW 98S R117 RIBEYE 88X ET
C 88X NOTICE ME 1311 ET
C NOTICE ME ET

| | CED | BW | WW | YW | MM | SCR | REA | MARB | BMIS | CHBS |
|-----|------|-----|----|-----|----|-----|------|------|------|------|
| EPD | -1.2 | 5.7 | 67 | 107 | 36 | 1.9 | 0.58 | 0.29 | 458 | 162 |

One of the most talked about bull's in the breed over the past couple years, Arlo was the Grand Champion Polled bull in 2024 at both the National Western and Fort Worth. Breeders began to take notice when he was the lead bull in the Colyer 2023 NWSS Champion Pen of Bulls. After that, he was the high selling bull in their 2023 sale for \$165,000 to Hoffman Herefords & Buck Cattle. His progeny have now begun to make a name for themselves topping sales across the country for many breeders. This young sire is exciting on many levels. He has the structure and build to put him in the same conversation as Miles but has the color & pigment along with carcass traits to make him the next level of genetic capability. Also, this is the very first time sexed female semen has been offered on this great sire. Owned with Hoffman Herefords and Buck Cattle Co.

Selling SEXED FEMALE semen in groups of 5 units.



C ARLO 2135 ET

41

SHF LEGION H315 L060

Polled
Hereford
Bull

SHF DAYBREAK Y02 D287 ET
SHF HEADSTRONG D287 H315 ET
SHF OXSANA 001A D03 ET

AHA# 44442417

DOB 01.31.2023

JW B716 DEVOUT 18051
SHF CHEER 051 J175
SHF CHEER C95 E064

| | CED | BW | WW | YW | MM | SCR | REA | MARB | BMIS | CHBS |
|-----|-----|-----|----|-----|----|-----|------|------|------|------|
| EPD | 9.8 | 2.1 | 78 | 122 | 43 | 2.2 | 0.89 | 0.36 | 487 | 160 |

Another of the new outcross Herd Sire's introduced to the Colyer program is Legion. Acquired as a partnership with GKB and Bill King, Legion has the opportunity to take any program to another level. Legion is elite in his genetic makeup as the #5 bull in the entire breed for his combination of CE, WW, REA & MARB. In addition, he has 15 traits in the top 5% of the breed and he's Homozygous Polled. Another young bull that is poised to make a massive impact on the Colyer program. Owned with Sandhill, GKB Cattle and Bill King.

Selling semen in groups of 5 units.



SHF LEGION H315 L060



C CUDA BELLE 2111

42

C CUDA BELLE 2111

Scurried
Hereford
Bull

C BARRACUDA 0114 ET

BEHM 100W CUDA 504C

C 105Y LADY DOMINO 4038

AHA# 44359805

DOB 01.11.2022

C LADY BELL ADVANCE 0053

BR BELLE AIR 6011

HH MISS ADVANCE 8293F {DOD}

| | CED | BW | WW | YW | MM | SCR | REA | MARB | BMI\$ | CHBS |
|-----|------|------|----|----|----|-----|------|------|-------|------|
| EPD | 10.7 | -1.5 | 55 | 88 | 41 | 0.5 | 0.11 | 0.31 | 425 | 130 |

Cuda Belle tied with Denali as the second high selling bull in the 2023 Colyer Bull Sale, selling to Knox Brothers. His first daughters were features in their 2024 Fall Female Sale, including the high selling female at \$85,000. His sire, Barracuda is one of the heavy used calving ease sires offered by ABS Global. Out of a great Belle Air daughter, Cuda Belle offers an excellent EPD profile ranking in the top 15% of the breed for 9 traits, along with his excellent phenotype. Most recently at the Cattlemen's Congress, Cuda Belle sons made up the Reserve Champion Pen of 5 Bulls for Dry Creek Farms. Owned with Knox Brothers Herefords.

Selling semen in groups of 5 units.



C GKB GUARDIAN 1015 ET

43

C GKB GUARDIAN 1015 ET

Polled
Hereford
Bull

LOEWEN GENESIS G16 ET

NJW 79Z Z311 ENDURE 173D ET

LOEWEN 77 48 MISS 344N 4RB42ET

AHA# 44257548

DOB 01.03.2021

C CJC BELLE AIR LASS 8037 ET

BR BELLE AIR 6011

C CJC 89T MISS MILES 4264 ET

| | CED | BW | WW | YW | MM | SCR | REA | MARB | BMI\$ | CHBS |
|-----|-----|-----|----|-----|----|-----|------|------|-------|------|
| EPD | 2.2 | 4.3 | 79 | 118 | 36 | 1.9 | 0.55 | 0.54 | 514 | 203 |

High selling bull in the 2022 National Hereford Sale at \$325,000 for ¼ interest valuation. Guardian brings the power, performance, phenotype and carcass merit unmatched in the Hereford breed. 85 lb. BW, 924 lb act. WW with an 964 adj WW with no creep and weighing 1,315 lbs. at exactly 10 months. His dam is a full sister to Belle Heir with a WWR of 108 on two head. Her individual IMF ratio is 152 and her first calf scanned and IMF ratio of 152 & REA ratio of 105. Most recently, 8037 is the dam of the 2026 Grand Champion Pen of Bulls at the National Western for Jensen Bros. His granddam is by the \$600,000 Miles McKee and dam is the \$117,000 89T. Owned with GKB Cattle, Iron Lake Ranch, Schrammel Cattle Co., and Randy Ward.

Selling semen in groups of 5 units.

44

C KEY WEST 0065

Polled
Hereford
Bull

C CJC BELLE HEIR ET

BR BELLE AIR 6011

C CJC 89T MISS MILES 4264 ET

AHA# 44122894

DOB 01.05.2020

C BLACK HAWK LASS 8019

C BLACK HAWK DOWN ET

C 88X RIBEYE LADY 6245

| | CED | BW | WW | YW | MM | SCR | REA | MARB | BMI\$ | CHBS |
|-----|-----|-----|----|-----|----|-----|------|------|-------|------|
| EPD | 6.9 | 4.1 | 67 | 105 | 29 | 1.0 | 0.78 | 0.34 | 601 | 172 |

Key West has proven to be very useful when calving and breeding replacement females. He is out of a first calf heifer that went straight to the donor pen. Use him for udder quality & calving ease, but also his carcass values and look makes him a big time herd sire. His daughters continue to be high selling feature females in many National Sales across the country. Owned with Jennings.

Selling semen in groups of 5 units.



C KEY WEST 0065

45

C CJC BELLE HEIR ET

Horned
Hereford
Bull

BR BELLE AIR 6011

BAR S LHF 028 240

BR BELLE 4082 ET

AHA# 43889959

C MILES MCKEE 2103 ET

DOB 01.12.2018

C CJC 89T MISS MILES

4264 ET

TH 166 20N GEMINI 89T

| | CED | BW | WW | YW | MM | SCR | REA | MARB | BMI\$ | CHBS |
|-----|-----|-----|----|----|----|-----|------|------|-------|------|
| EPD | 8.5 | 1.7 | 63 | 99 | 30 | 1.7 | 0.65 | 0.39 | 581 | 171 |

As so many continue to search for a horned bull that does everything right, Belle Heir remains rock solid as a high accuracy bull that does so many things right. Belle Heir is currently in the top 10% of the breed for 8 traits. Rarely does a young herd bull surface that does so many things right for the industry. He has been used successfully on heifers providing calving ease & light birthweights. His calves show explosive growth and have structural integrity & extra pigment. The carcass figures rank him among the breed's elite. He is so impressive to look at in the breeding pasture because of his massive build & structural soundness. His first daughters calved in the spring of 2022 and they are very impressive. Owned with Knox Brothers.

Selling semen in groups of 5 units.



C CJC BELLE HEIR ET

46

BR BELLE AIR 6011

Horned
Hereford
Bull

BAR S LHF 028 240

CHURCHILL SENSATION 028X

CHURCHILL LADY 078X

AHA# 43724674

GOLDEN OAK OUTCROSS 18U

DOB 02.03.2016

BR BELLE 4082 ET

BR CSF BRIELLE 8052 ET

| | CED | BW | WW | YW | MM | SCR | REA | MARB | BMI\$ | CHBS |
|-----|-----|-----|----|-----|----|-----|------|------|-------|------|
| EPD | 0.4 | 2.4 | 63 | 101 | 36 | 2.8 | 0.24 | 0.69 | 550 | 178 |

The 2017 & 2019 NWSS Grand Champion Hereford Bull & Supreme Champion Hereford, Belle Air has been renowned for both his daughter's ability and his son's performance in the commercial sector. With moderate BW, excellent growth and supreme marbling, Belle Air progeny continue to fit within every segment of the cattle business. Owned with Barber Ranch, Bill King and Rylee Barber Matheny.

Selling semen in groups of 5 units.



BR BELLE AIR 6011

JUSTIN B. STOUT AUCTION SERVICE, LLC

15508 Woodward Street
Overland Park, KS 66223



Colyer
HEREFORDS & ANGUS

Spring Frozen Sale

MONDAY, MARCH 2, 2026 at 4:00 P.M. M.S.T.

Live online only **LiveAuctions.TV**