



DIXIELAND DELIGHT

Red, White & Black
ANGUS & HEREFORD PRODUCTION SALE



42



SATURDAY, MAY 3, 2025

TENNESSEE RIVER MUSIC, INC.

12 NOON, FORT PAYNE, ALABAMA

Two Breeds – One Legendary Sale

Welcome!

It's an honor to welcome you to our 42nd consecutive production sale. A lot of great friends have helped make our sales successful, and for that we are extremely grateful. It's great to see generations of our friends attend our sales each year. There's been a lot of great times and great fun happen at Dixieland Delight over the years. Our customers are appreciated so much by all of us here at Tennessee River Music, Inc. All of these years have made me and Kelly better people because of the great people we have met throughout the years who have participated in our sales.



Randy and Kelly Owen

Kelly and I get so excited watching Harper Rose show her cattle; makes our hearts beat faster and sometimes brings tears to our eyes. We were all very blessed to see Harper have a successful show at Cattlemen's Congress, Dixie National and the Alabama Junior Livestock Expo, among other shows. She had division winners at Congress, Grand Champion at the Dixie National and Supreme Champion at the Alabama Junior Livestock Expo. Harper works very hard with her show cattle and is not afraid to work! John Owen thinks he may want to show too, someday. Right now, playing ball is very important to him, and of course Mimi and I go to the ballgames. Whatever our grandkids decide to do, me and Kelly will be there to support them. We are very proud of John Owen's sports achievements and Harper's show success. We have four other grandchildren who we are equally proud of; we are blessed!

We are blessed to have Randa and John to carry on what Kelly and I started 44 years ago. They make us very proud and thankful for all they do. Our operation is a family operation, and everyone who works so hard here on the farm and at the bull stud are like family to us. We could not have such an exciting presentation of cattle without everyone putting their shoulder to the wheel. These are the most exciting set of calves that me and Kelly have seen born since we started this journey.

Make your plans; bring your whole family and enjoy participating in **DIXIELAND DELIGHT 42**.

God bless y'all,

Randy Owen

Music will be on Friday night along with dinner. Megan Owen along with her band will be entertaining. Great music, great fun!



Tennessee River Music

Registered Herefords & Angus

tennesseerivermusic.com

GPS Address: 4518 CR 255, Fort Payne, AL 35967

553 Randy Owen Dr. NE, Fort Payne, AL 35967

Email: cattle@tennesseerivermusic.com

Randy & Kelly Owen, owners



John, Randa, Harper & John Owen Starnes, Starnes Family Cattle Company

John (256) 996-5559 • Randa (256) 996-5545

Roland & Janet Starnes • Roland (706) 601-0800

John Eberhart (256) 630-5915 • Jaden Hardy (706) 728-8535

Chuck Wright (256) 996-2653 • Chris Stephens (816) 868-1858



DIXIELAND DELIGHT

Red, White & Black 42
ANGUS & HEREFORD PRODUCTION SALE

TENNESSEE RIVER MUSIC, INC.
SATURDAY, MAY 3, 2025
FORT PAYNE, ALABAMA



John, Randa, Harper and John Owen Starnes

What a blessing it is to welcome you to our 42nd Production Sale! Let this letter serve as your official invitation to attend! As we're writing this letter, it is a breezy, sunny 80-degree day here atop Lookout Mountain. While our winter was relatively mild, we had several cold spells that we in the Southeast are not accustomed to. Our spring, thus far, has been very pleasant, and the sight of more and more green grass coming on with each passing day is certainly a nice sight.

Last year for our 41st consecutive sale, we had our deepest offering to date at that point, and this year for our 42nd consecutive female sale, from top to bottom this is without a doubt the best set we have assembled. Matt echoed these exact words from the picture pen this week. From the udder and teat quality on the females to the stout baby calves on their side, this group as a whole is truly remarkable. We are very excited to share these genetics with you and have them become a part of your program. Unlike last year, where we had few fall split pairs to offer, we have upped the game in that division and truly feel that there are several sale highlights within the fall split pairs in both the Hereford and Angus breeds. We feel once again that we are loaded for bear in the Hereford spring pair division, with many calves having breed-leading EPDs. While the spring cows are tremendous from top to bottom, the calves at their sides are a true highlight as well. Most of the calves are sired by Merit or Red Man. This will be the first progeny of Red Man to sell at auction, and we really think you are going to like what you see. Merit has already left his mark on the Hereford breed, with many sons and daughters topping sales across the country. We are very excited about the future of these two bulls, not only in our herds but within the breed and your own programs as well. These two bulls are so unique in what they bring to the table—they both are ELITE numbered with phenotype to burn, which is hard to do most times. All Hereford spring pairs will be exposed to Red Man prior to the sale, so there will be a strong possibility of buying 3-in-1 pairs. We don't know where to start on featuring the spring pairs, it is loaded with the most notable cow families in the Hereford breed. The opportunities are endless, with many needing to enter a donor program. We are excited for each of you to be able to see what we have to offer.

We are truly blessed to work side by side with our family and loved ones. Living and working with family on our cattle operation is something we don't take for granted, and we are forever grateful to the good Lord above for the blessings of being able to do what we love. We can't thank "Da" Roland, Nonnie, Poppy and Mimi enough for all they do here at TRM and for us as a family. John Eberhart and Jaden Hardy have stepped up to the plate in a big way with all daily tasks that are too long to mention in this letter. It would take a book to write what all they do throughout the days and weeks here at TRM. Adrian and Chuck keep everything rolling at Lookout Mountain Genetics. We are truly blessed with a great crew, and without each of them and yourselves, we wouldn't be able to do any of this. It's said the days are long, but the years are short. Ranch life sure makes that statement ring true, as we work sun up 'til sun down.

Honesty and integrity are something we take very seriously, and our motto is quite simple. **We raise the type and kind of livestock that are stout, sound and functional and can flat get the work done all while having respectable EPD profiles.** We have never chased EPD fads and breed for a more uniform, balanced animal that can thrive in our Southeastern environment. Everything we know about the cattle, you will too. Our customers, both big and small, mean the world to us, and we realize that without each and every one of you, none of what we do would be possible. We are forever indebted to our past, present and future customers.

Please make plans to join us Friday, May 2, to view the cattle and enjoy fellowship among other breeders. If you ever need anything or if we can help you in any way, please don't hesitate to call anyone here at the ranch. We appreciate you and value your friendship more than you could imagine. *We are blessed to call TRM customers our friends and colleagues, and we would love the opportunity to work with you.*

Forever grateful,

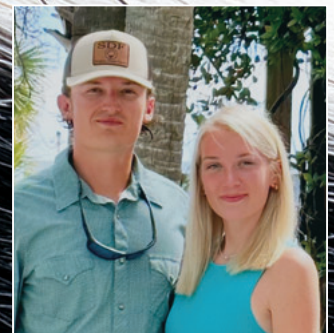
John and Randa Starnes



Roland and Janet Starnes



John and Bailey Eberhart



Jaden Hardy and Emma

DIXIELAND DELIGHT

Red, White & Black
ANGUS & HEREFORD PRODUCTION SALE

FRIDAY, MAY 2

Sale cattle on display all day.

Join us Friday evening for the

DIXIELAND DELIGHT SOCIAL

SATURDAY, MAY 3

Cattle on display beginning at 8 a.m. • Lunch served at 11 a.m.

12 NOON (CDT) – **DIXIELAND DELIGHT 42**

Hereford LOTS 1-54

Angus LOTS 101-126

— 147 head plus Hereford embryos —

Herefords sell first, followed immediately by Angus.

Tennessee River Music, Inc. GPS address: 4518 County Road 255, Fort Payne, AL 35967

From Birmingham or Chattanooga: From Birmingham, take I-59 North to Fort Payne exit 218 (Hwy. 35). From Chattanooga, take I-24 West to I-59 South to Fort Payne exit 218 (Hwy. 35). Take Hwy. 35 South into Fort Payne, turn right at the city park and follow Hwy. 35 up Lookout Mountain. Turn right on County Road 78. Follow 1 mile and turn left onto County Road 255. Follow 8/10 mile to TRM entrance.

From Atlanta: Take I-75 North toward Chattanooga. Take GA exit 290 toward Rome/Canton. Turn left onto GA 20/Hwy. 411. Merge onto Joe Frank Harris Pkwy. US-411/GA-20 W toward Kingston/Rome. Take the US-411 S/GA-20 W ramp toward Rome. Turn right onto AL Hwy. 35. Continue on Hwy. 35 up Lookout Mountain. Turn left onto County Road 78. Follow 1 mile and turn left onto County Road 255. Follow 8/10 mile to TRM entrance.

SALE DAY PHONES

John Starnes — (256) 996-5559
Randa Starnes — (256) 996-5545
Roland Starnes — (706) 601-0800
Matt Sims — (405) 641-6081
Chris Stephens — (816) 868-1858

SALE DAY STAFF

Matt Sims, Auctioneer & Sale Manager — (405) 641-6081
AL License 5217
Eddie Burks, Auctioneer — AL License 1532 (270) 991-6398
Eddie Sims, Consultant — (580) 595-1626
Don Birk, Birk Enterprises — (417) 860-8595
Corbin Cowles, American Hereford Assn. — (270) 991-2534
Alex Tolbert, American Angus Assn. — (706) 338-8733
Robert Schacher, Schacher Auction Services — (817) 219-0102
Juston Stelzer, Stelzer Services — (817) 992-7059
Robert Brooks — (423) 307-9149
Bobby Singleton — (615) 708-1034
Dave Roberts — (256) 996-1788
Will Coon — (865) 237-7711
Carter St. John — (205) 705-4041
Locke St. John — (615) 427-8979

ONLINE BIDDING



Real-time internet bidding is available to registered bidders at liveauctions.tv
Email: TechSupport@LiveAuctions.tv
Phone: (682) 816-4900

Sale catalog prepared by Matt C. Sims Auction, Inc. (405) 641-6081
Produced by Southwest TypeStyles (405) 317-1743 • swtype@gmail.com

SALE TERMS AND CONDITIONS

Cattle will sell under the suggested Terms and Conditions of their respective breed association, either the American Hereford Association (hereford.org) or the American Angus Association (angus.org).

HERD HEALTH

All cattle will be accompanied by proper health certificates for immediate shipment.

TRUCKING

Kip Childers will be onsite sale day — (256) 303-3382. Additional truckers believed to be reliable will also be available to assist you in the delivery of your purchases.

LIVESTOCK MORTALITY INSURANCE

These representatives will be onsite sale day to assist you with mortality insurance coverage: InsureYourCattle.com — Jimmy James (580) 481-0955 and Jace James (580) 481-0927; James F. Bessler, Inc. — Jim Bessler (815) 762-2641

SUPPLEMENTAL INFORMATION

A supplemental sheet will be available sale day with complete and up-to-date information. Announcements from the auction block regarding the cattle selling in this sale take precedence over information listed in this catalog or other advertising. Up-to-date genetic recessive status can be viewed online at www.hereford.org or www.angus.org.

EXPECTED PROGENY DIFFERENCES (EPDs)

The EPDs included were current as of April 10, 2025. The most current information may be viewed on the individual breed websites.

As the sale manager, Matt C. Sims Auction, Inc. is only an agent for the seller and has no responsibilities other than those involved in conducting the sale. All persons who attend this sale do so at their own risk. The owners, sale manager and the sale staff assume no liability, legal or otherwise, for property loss or any accidents that may occur.

join us for this *Red, White and Black* event

Dear Friends and Fellow Breeders,

Welcome to the 42nd Annual Dixieland Delight Sale at Tennessee River Music, Inc. The 2025 edition of the TRM spring female production sale is among their largest offerings to date and is a celebration of over four decades in the registered business. Once again, this sale features the best of both breeds here at TRM, and I hope you will join us for this “Red, White and Black” event.

I would first like to thank Randy, Kelly, John, Randa, Roland and the rest of the TRM crew for again allowing me to assist them along in the marketing of this exceptional set of cattle. John and Randa continue to embrace their role as parents to Harper and John Owen and their management role here at TRM. With the help of their family and crew, they have again assembled a tremendous offering, and the presentation of the cattle is second to none.

This year's edition of the Dixieland Delight features elite progeny of the Hereford breed's most popular bulls, including the TRM sires Merit and Red Man. Another tremendous set of Hereford spring pairs that were acquired in their acquisition of the Shaw Cattle Co. spring herd in 2022 sells. Also selling is a donor quality Angus bred heifer and two fall Angus heifers plus a select group of Angus spring pairs as well as fall pair splits in both breeds. This offering continues the tradition of offering sound, functional cattle that excel in phenotype and individual performance while maintaining a strong genetic base with numerical balance and diversity. Whether you are adding to your existing herd, seeking a donor dam or junior herd sire, or you're looking for your next show ring champion, you will find it among this exceptional offering.

For those of you who have not attended a TRM sale, you are in for a real treat. This is a family operation, and the hospitality and entertainment extended by the Owen family is like no other. They work very hard on the presentation of the cattle, and you are sure to appreciate their efforts once you lay eyes on this exceptional offering.

Please evaluate the needs of your operation and plan to join us Friday, May 2nd to preview the cattle and on Saturday, May 3rd for this great event. Please do not hesitate to call me with any questions on either breed or if I can help you in any way.

Sincerely,

Matt Sims
Matt Sims



SALE MANAGER

Matt C. Sims

(405) 641-6081 voice / text

E-mail: matt@mcsauction.com

P.O. Box 1219, Edmond, OK 73083

www.mcsauction.com



The ranch is bordered by scenic Little River Canyon National Preserve and located atop Lookout Mountain, six miles from Interstate 59.

FORT PAYNE AREA ATTRACTIONS While visiting Tennessee River Music, you will find that Fort Payne has much to offer, including the group Alabama's Fan Club and Museum, downtown Fort Payne, and the beautiful Little River Canyon National Preserve Park, located just one mile from TRM. *We hope you enjoy your visit to TRM and the lovely city of Fort Payne!*

HOTEL ACCOMMODATIONS

Room blocks are available at both
under Tennessee River Music
Dixieland Delight

Hampton Inn Fort Payne • (256) 997-1020

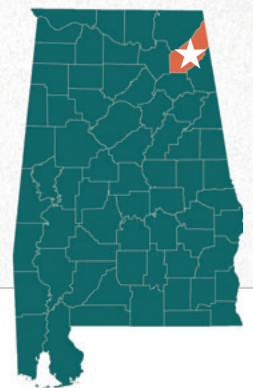
112 Airport Rd. W, Fort Payne

Holiday Inn Express • (256) 304-2600

1201 Jordan Road Southwest, Fort Payne



*Little River Canyon
National Preserve Park*



Thank you for your interest in what we've been doing since 1981!

If we can help you in any way, please don't hesitate to contact us.

*Special thanks to our
sale day lunch sponsor!*



Sale updates will be posted online at tennesseerivermusic.com and mcsauction.com

TENNESSEE RIVER MUSIC, INC. • SATURDAY, MAY 3, 2025 • FORT PAYNE, ALABAMA

DIXIELAND DELIGHT

Red, White & Black
ANGUS & HEREFORD PRODUCTION SALE

The Herefords...

Lots 1-54



HEREFORD
FOR REFERENCE ONLY



Service sires represented



JW 1857 MERIT 21134
TRM herd sire



ASM 405B RED MAN 325L ET
TRM herd sire

A bull **JW 1857 MERIT 21134** {DLF,HYF,IEF,MSUDF,MDF,DBF}
DOB 10/14/20 | AHA P44212986 | TATTOO 21134 | HOM. POLLED

EFBEEF TFL U208 TESTED X651 ET {SOD,CHB} EFBEF FOREMOST U208 {SOD,CHB}
JW X651 TESTED 1857 ET {CHB} EFBEF P606 MABEL R415
KCF MISS 22S A261 SCHU-LAR ON TARGET 22S {SOD,CHB}
KCF MISS PROFICIENT U201

JDH VICTOR 719T 33Z ET {SOD,CHB} TH 122 711 VICTOR 719T {SOD} \$BMI
JW 33Z VICTORIA 19027 JDH MS YANKEE 11U ET +526
JW 028X DOMINETTE 1417 CHURCHILL SENSATION 028X {SOD} \$BII
KCF MISS M106 P433 +675

CED	BW	WW	YW	SC	SCF	MILK	UDDR	TEAT	CW	REA	MARB	\$CHB
+8.6	+1.2	+92	+142	+1.6	+21.9	+34	+1.5	+1.5	+118	+9.3	+7.1	+236

- Homozygous polled.
- Owned with Waggoner Cattle Co.

B bull **ASM 405B RED MAN 325L ET** {DLF,HYF,IEF,MSUDF,MDF,DBF}
DOB 2/22/23 | AHA P44491851 | TATTOO 325L | HOM. POLLED

KCF BENNETT ENCORE Z311 ET {SOD,CHB} SCHU-LAR ON TARGET 22S {SOD,CHB}
NJW 79Z Z311 ENDURE 173D ET {SOD,CHB} KCF MISS REVOLUTION X338 ET
BW 91H 100W RITA 79Z ET NJW 73S M326 TRUST 100W ET {SOD,CHB}
REMITALL RITA 91H

NJW 73S W18 HOMETOWN 10Y ET {SOD,CHB} SHF WONDER M326 W18 ET {SOD,CHB} \$BMI
ASM 705 10Y MISS MALLORY 405B NJW P606 72N DAYDREAM 73S +559
ASM 122L MISS 705ET REMITALL ONLINE 122L {SOD,CHB} \$BII
KSU MISS 6052F 308 ET +661

CED	BW	WW	YW	SC	SCF	MILK	UDDR	TEAT	CW	REA	MARB	\$CHB
+10.7	+0.7	+63	+104	+0.9	+25.6	+36	+1.3	+1.4	+112	+1.06	+4.0	+204

- Homozygous polled.
- 2025 Cattleman's Congress Grand Champion Polled Hereford Bull.
- Owned with Matheny Herefords.
- His first progeny and his service sell.

C bull **/S PERFECTO 00572 ET** {DLF,HYF,IEF,MSUDF}
DOB 8/31/20 | AHA P44234898 | TATTOO 00572 | POLLED

LCX PERFECTO 11B ET NJW 98S R117 RIBEYE 88X ET {SOD}
BG LCC 11B PERFECTO 84F WLL ZOYE 3Z
BG 100W NICKY 31C {DOD} NJW 73S M326 TRUST 100W ET {SOD,CHB}
BG MS DOMINO 90Z

R LEADER 6964 {SOD} HYALITE ON TARGET 936 {SOD} \$BMI
/S LADY LEADER 7201E ET R MISS REVOLUTION 1009 {DOD} +543
/S LADY DOMINO 0158X SHF RIB EYE M326 R117 {SOD,CHB} \$BII
/S LADY DOMINO 652S +635

CED	BW	WW	YW	SC	SCF	MILK	UDDR	TEAT	CW	REA	MARB	\$CHB
+15.3	-1.5	+56	+90	+1.5	+30.1	+46	+1.4	+1.5	+53	+2.2	+2.1	+101

- Owned with Shaw Cattle Co.



/S PERFECTO 00572 ET
TRM herd sire

Selling Buyer's Choice...



1A **SFCC TRM LADY MERIT 4566 ET** {DLF,HYF,IEF,MSUDF,MDF,DBF}
 DOB 9/24/24 | AHA P44619773 | TATTOO 4566 | HOM. POLLED

JW X651 TESTED 1857 ET {CHB}
JW 1857 MERIT 21134 {CHB}
 JW 33Z VICTORIA 19027

EFBEEF BR VALIDATED B413 {SOD,CHB}
BR VALIDATED B413 6035 7098
 BR BENNETT 4R Y428 2101 6035

CED	BW	WW	YW	SC	SCF	MILK	UDDR	TEAT	CW	REA	MARB	\$BHI	\$CHB
+6.1	+1.4	+79	+114	+1.9	+27.7	+42	+1.6	+1.6	+103	+9.5	+8.9	+755	+229

- Sells open.
- As of the 4/7/25 update, LOT 1A IS THE ONLY FEMALE IN THE HEREFORD DATABASE TO OFFER HER COMBINATION OF WW, YW, RE, MARB AND \$CHB.
- This well pigmented, dark red, homozygous polled donor prospect has the build and numerical profile of a high impact donor.
- Ranks in the top 1% for WW, SCF, Milk, M&G, Teat, CW, Marb, \$BHI, \$BII and \$CHB; top 2% for SC and REA; top 7% for YW; top 23% for BW.

1B **SFCC TRM LADY MERIT 4564 ET** {DLF,HYF,IEF,MSUDF,MDF,DBF}
 DOB 9/23/24 | AHA P44619769 | TATTOO 4564 | HOM. POLLED

JW X651 TESTED 1857 ET {CHB}
JW 1857 MERIT 21134 {CHB}
 JW 33Z VICTORIA 19027

EFBEEF BR VALIDATED B413 {SOD,CHB}
BR VALIDATED B413 6035 7098
 BR BENNETT 4R Y428 2101 6035

CED	BW	WW	YW	SC	SCF	MILK	UDDR	TEAT	CW	REA	MARB	\$BHI	\$CHB
+4.1	+2.5	+85	+127	+1.7	+26.3	+39	+1.5	+1.5	+92	+9.5	+8.3	+575	+213

- Sells open.
- As of the 4/7/25 update, LOT 1B IS ONE OF ONLY TWO FEMALES IN THE HEREFORD DATABASE TO OFFER HER COMBINATION OF WW, YW, RE, MARB AND \$CHB.
- An elegant and feminine homozygous polled female with pigment, style and balance to complement her outstanding numerical profile.
- Ranks in the top 1% for WW, M&G, Marb, \$BHI, \$BII, \$CHB and YW; top 2% for SCF and REA; top 3% for Udder; top 4% for SC, Milk and Teat; top 6% for CW.

- Lot 1 in the 42nd Annual Dixieland Delight Sale offers buyer's choice of these big numbered, homozygous polled flush sister donor prospects sired by the highly popular TRM and Waggoner sire Merit 21134 and out of BR Validated B413 6035 7098, aka "Super Cow." The donor dam of Lots 1A–1D sold as Lot 3 in the Inaugural Big League Genetics Sale in 2019, commanding \$62,500 for half interest for a \$125,000 valuation to Churchill Cattle Co. in Montana. "7098" has become a household name in the Hereford breed, now claiming well over \$1 million in progeny sales...and climbing. She has produced sires such as Churchill Red Cloud 0376H ET, Birdwell New Standard 2912 ET, Birdwell Bullnaza 7098 0552ET, Birdwell Redbird 7098, Churchill Red Thunder 133J ET, Birdwell Wall Street 0588ET, Churchill BR 5JNationwide 179J, Churchill Smokey 3128L ET, Churchill Jack Frost 458M ET and Birdwell Pivotal 7098 2553 ET, as well as donors that are working in top programs across the United States.
- A maternal sister to Lots 1A–1D, BR Relevant D67 7098 9226 9226, was the first natural born calf out of 7098 and sold as Lot 3A in the 2019 Inaugural Big League Genetics Sale to Atkins Herefords and Hoffman Ranch for \$16,000. While serving as a donor for Atkins and Hoffman, she produced more than \$150,000 in total sales and is currently working in the Stellflug Cattle Co. program.
- The dam of Lots 1A–1D posts progeny ratios of 3@96 for BW, 1@102 for YW, 76@100.8 for REA and 76@108.5 for IMF.

...Merit x Validated 7098 flush sisters



1c	SFCC TRM LADY MERIT 4554 ET	(DLF,HYF,IEF,MSUDF,MDF,DBF)
DOB 9/18/24 AHA P44619768 TATTOO 4554 HOM. POLLED		
JW X651 TESTED 1857 ET (CHB)	EFBEEF TFL U208 TESTED X651 ET (SOD,CHB)	
JW 1857 MERIT 21134 (CHB)	KCF MISS 22S A261	
JW 33Z VICTORIA 19027	JDH VICTOR 719T 33Z ET (SOD,CHB)	
	JW 028X DOMINETTE 1417	
EFBEEF BR VALIDATED B413 (SOD,CHB)	EFBEEF TFL U208 TESTED X651 ET (SOD,CHB)	\$BMI
BR VALIDATED B413 6035 7098	EFBEEF 4R THYRA Y865	+571
BR BENNETT 4R Y428 2101 6035	KCF BENNETT REVOLUTION Y428	\$BII
	BR BENNETT OF 4070 2101	+704
		\$CHB
		+194
CED	BW	WW
+9.5	+0.1	+69
YW	SC	SCF
+102	+1.6	+27.6
MILK	UDDR	TEAT
+33	+1.4	+1.4
CW	REA	MARB
+87	+0.80	+0.75

- Sells open.
- As of the 4/7/25 update, LOT 1C IS THE ONLY FEMALE IN THE HEREFORD DATABASE TO OFFER HER COMBINATION OF CED, BW, WW, YW, SCF, RE, MARB AND \$CHB.
- This sister is sure to be the phenotypic favorite of many among this outstanding set of homozygous polled sisters.
- Ranks in the top 1% for SCF, Marb, \$BMI, \$BII and \$CHB; top 7% for SC and REA; top 9% for BW, WW and Udder; top 10% for CED; top 11% for M&G and CW; top 13% for Teat; top 21% for Milk; top 24% for YW.

1d	SFCC TRM LADY MERIT 4570 ET	(DLF,HYF,IEF,MSUDF,MDF,DBF)
DOB 9/26/24 AHA P44619775 TATTOO 4570 HOM. POLLED		
JW X651 TESTED 1857 ET (CHB)	EFBEEF TFL U208 TESTED X651 ET (SOD,CHB)	
JW 1857 MERIT 21134 (CHB)	KCF MISS 22S A261	
JW 33Z VICTORIA 19027	JDH VICTOR 719T 33Z ET (SOD,CHB)	
	JW 028X DOMINETTE 1417	
EFBEEF BR VALIDATED B413 (SOD,CHB)	EFBEEF TFL U208 TESTED X651 ET (SOD,CHB)	\$BMI
BR VALIDATED B413 6035 7098	EFBEEF 4R THYRA Y865	+529
BR BENNETT 4R Y428 2101 6035	KCF BENNETT REVOLUTION Y428	\$BII
	BR BENNETT OF 4070 2101	+670
		\$CHB
		+222
CED	BW	WW
+3.3	+2.1	+70
YW	SC	SCF
+109	+0.9	+23.1
MILK	UDDR	TEAT
+28	+1.5	+1.4
CW	REA	MARB
+94	+0.98	+0.91

- Sells open.
- As of the 4/7/25 update, LOT 1D IS THE ONLY FEMALE IN THE HEREFORD DATABASE TO OFFER HER COMBINATION OF WW, YW, SCF, RE, MARB AND \$CHB.
- This long bodied, angular female is uber feminine in her design with a wicked set of numbers. She too is tested homozygous polled.
- Ranks in the top 1% for Marb, \$BII and \$CHB; top 2% for REA and \$BMI; top 3% for Udder; top 4% for CW; top 8% for WW; top 9% for SCF; top 12% for YW; top 13% for Teat; top 23% for M&G.



JW 1857 MERIT 21134
Sire of Lots 1A-B-C-D...many other progeny sell



BR VALIDATED B413 6035 7098
Dam of Lots 1A-B-C-D



BR RELEVANT D67 7098 9226
Top producing maternal sister to Lots 1A-B-C-D



2
cow

SFCC TRM LADY DEMAND 4565 ET (DLF,HYF,IEF,MSUDF)

DOB 9/24/24 | AHA P44625998 | TATTOO 4565 | POLLED

RV VALOR 94446 ET (CHB)
BAR JZ ON DEMAND
BAR JZ HANNAH 087B

H FHF ADVANCE 628 ET (CHB)
/S LADY ADVANCE 1016J ET
/S LADY LEADER 7201E ET

JDH VICTOR 719T 33Z ET (SOD,CHB)
RV BOBBI 1404
NJW 73S W18 HOMEGROWN 8Y ET (SOD)
BAR JZ VIRGINIA 347Y

HH ADVANCE 4075B ET
FHF 408 RITA 21W
R LEADER 6964 (SOD)
/S LADY DOMINO 0158X

\$BMI
+335
\$BII
+413

CED	BW	WW	YW	SC	SCF	MILK	UDDR	TEAT	CW	REA	MARB	\$CHB
+12.3	+0.6	+68	+108	+1.3	+14.4	+17	+1.2	+1.4	+84	+7.1	+0.5	+127

- Sells open.
- The dam of Lot 2, /S Lady Advance 1016J ET, sold for \$21,000 in the 2023 Dixieland Delight as Lot 1.
- Maternal sibs to the dam of Lot 2 include the \$100,000-valued /S Lady Endure 0043H ET, who was the \$50,000 1/2 interest selection of Salt Log Branch from the 2022 Dixieland Delight, and /S Arsenal 00161 ET, the \$31,000 2/3 interest high-selling bull from the 2021 Shaw Cattle Co. Bull Sale.
- The grandam of Lot 2, /S Lady Leader 7201E, is a prolific donor at Shaw Cattle Co. and a full sister to /S Mandate 66589 ET, who was the \$62,000 1/2 interest top-selling selection of ST Genetics from the 2018 Shaw Bull Sale.
- A maternal sister to the grandam of Lot 2, /S Lady York 782E ET, was TRM's \$33,500 selection from the 2019 Shaw Female Sale, where a flush on her dam sold for \$11,500. After her time as a prolific donor at TRM, 782E again sold in the 2022 Dixieland Delight for \$12,000.
- Dam records 2@89 for BW.
- Ranks in the top 4% for CED; top 12% for WW; top 13% for BW, Teat and YW; top 14% for REA; top 15% for CW; top 23% for SC.

“7201E”
cow family



/S LADY ADVANCE 1016J ET

Dam of Lot 2;

also maternal sister to Lot 3 embryos and to dam of Lot 4 embryos



**/S LADY YORK
782E ET**

*Maternal sister to
grandam of Lot 2
and to dam of
Lot 3 embryos*

HEREFORD EMBRYO PACKAGES | 7201E FAMILY



/S LADY LEADER 7201E ET

*Dam of Lot 3 embryos;
also maternal grandam of Lot 2 and Lot 4 embryos*

3
embryos

RED MAN X LADY 7201E

4 Conventional Grade 1 Embryos

NJW 79Z Z311 ENDURE 173D ET {SOD,CHB}
ASM 405B RED MAN 325L ET
ASM 705 10Y MISS MALLORY 405B

R LEADER 6964 {SOD}
/S LADY LEADER 7201E ET
/S LADY DOMINO 0158X

(Mating EPDs)

CED	BW	WW	YW	SC	SCF	MILK	UDDR	TEAT	CW	REA	MARB	\$BMI
+13.2	-0.6	+54	+87	+1.5	+25.0	+30	+1.4	+1.5	+79	+55	+27	+147

KCF BENNETT ENCORE Z311 ET {SOD,CHB}
BW 91H 100W RITA 79Z ET
NJW 73S W18 HOMETOWN 10Y ET {SOD,CHB}
ASM 122L MISS 705ET

HYALITE ON TARGET 936 {SOD} \$BMI
R MISS REVOLUTION 1009 {DOD} +501
SHF RIB EYE M326 R117 {SOD} \$BII
/S LADY DOMINO 652S +587

- Selling four conventional embryos with a guarantee of at least two pregnancies to result if implanted by a certified embryologist within one year of purchase.
- These embryos resulted from the "Pick of the Shaw Donors" flush lot from the 2024 Reno Sale. TRM selected the donor dam of this mating, /S Lady Leader 7201E ET, a prolific donor at Shaw Cattle Co. and full sister to /S Mandate 66589 ET, the \$62,000 1/2 interest top-selling selection of ST Genetics from the 2018 Shaw Bull Sale, to mate with the TRM and Matheny sire Red Man, who is the reigning Cattleman's Congress Champion Polled Hereford Bull.
- Maternal sibs to this mating include the \$100,000-valued /S Lady Endure 0043H ET, who was the \$50,000 1/2 interest selection of Salt Log Branch from the 2022 Dixieland Delight, and /S Arsenal 00161 ET, the \$31,000 2/3 interest high-selling bull from the 2021 Shaw Cattle Co. Bull Sale.
- The sire of this mating ranks in the top 1% for CW, REA, \$BMI, \$BII and \$CHB; top 3% for SCF, top 6% for CED; top 7% for Marb; top 10% for Milk and M&G; top 13% for Teat; top 15% for BW; top 18% for YW; top 24% for WW.
- The dam of this mating ranks in the top 1% for SC; top 2% for CED; top 3% for BW and SCF; top 4% for Teat; top 5% for SCF; top 9% for Udder; top 15% for \$BMI; top 20% for \$BII.
- 7201E combines an average progeny birth weight ratio of 15@98 with a ribeye ratio of 31@107.



/S LADY ENDURE 0043H ET

*Dam of Lot 4 embryos;
also maternal sister to Lot 3 embryos and to dam of Lot 2*

4
embryos

MERIT X LADY 0043H

4 Conventional Grade 1 Embryos

JW X651 TESTED 1857 ET {CHB}
JW 1857 MERIT 21134 {CHB}
JW 33Z VICTORIA 19027

NJW 79Z Z311 ENDURE 173D ET {SOD,CHB}
/S LADY ENDURE 0043H ET
/S LADY LEADER 7201E ET

(Mating EPDs)

CED	BW	WW	YW	SC	SCF	MILK	UDDR	TEAT	CW	REA	MARB	\$BMI
+8.0	+1.7	+78	+125	+1.7	+23.1	+33	+1.4	+1.4	+102	+82	+52	+198

EFBEEF TFL U208 TESTED X651 ET {SOD,CHB}
KCF MISS 22S A261
JWH VICTOR 719T 33Z ET {SOD,CHB}
JW 028X DOMINETTE 1417

KCF BENNETT ENCORE Z311 ET {SOD,CHB} \$BMI
BW 91H 100W RITA 79Z ET +513
R LEADER 6964 {SOD} \$BII
/S LADY DOMINO 0158X +637

- Selling four conventional embryos with a guarantee of at least two pregnancies to result if implanted by a certified embryologist within one year of purchase.
- This mating couples the popular TRM and Waggoner herd sire Merit with the \$100,000-valued /S Lady Endure 0043H ET, who was the \$50,000 1/2 interest selection of Salt Log Branch from the 2022 Dixieland Delight.
- In the 2023 Dixieland Delight, a full sister to this mating sold for \$11,000, while a heifer pregnancy by Houston sold for \$9,000.
- The maternal grandam of this mating, /S Lady Leader 7201E ET, is a prolific donor at Shaw Cattle Co. and a full sister to /S Mandate 66589 ET, who was the \$62,000 1/2 interest top-selling selection of ST Genetics from the 2018 Shaw Bull Sale.
- A full brother to the dam of these embryos, /S Arsenal 00161 ET, was the \$31,000 2/3 interest high-selling bull from the 2021 Shaw Cattle Co. Bull Sale, while a maternal sister was featured as Lot 1 and sold for \$21,000 in the 2023 Dixieland Delight.
- The sire of this mating ranks in the top 1% for WW, M&G, CW, Marb, \$BII, \$CHB and YW; top 2% for \$BMI; top 3% for Udder and REA; top 4% for Teat; top 7% for SC; top 12% for CED; top 15% for SCF and Milk; top 19% for BW.
- The dam of this mating ranks in the top 4% for SC, \$BMI and \$BII; top 7% for \$CHB; top 11% for Marb and YW; top 12% for CW; top 14% for REA; top 19% for CED and M&G; top 22% for Milk; top 23% for WW.
- 0043H records progeny ratios of 1@139 for WW, 12@102 for RE and 12@101 for IMF from a dam that combines an average progeny BW ratio of 15@98 with a RE ratio of 31@107.



ASM 405B RED MAN 325L ET

*Sire of Lot 3 embryos
...nine Red Man progeny
and his service sell*



/S MANDATE 66589 ET

*Full sib to dam of Lot 3 embryos
...16 Mandate daughters sell*



/S LADY DOMINO 0158X

*Maternal granddam of Lot 3 embryos
and third dam of Lots 2 and 4 embryos*



SFCC TRM LADY MERIT 3140

*\$11,000 maternal sister
to Lot 4 embryos*

SALE FEATURE TWO-YEAR-OLD SPRING PAIR



MCS

Lot 5

5 **SFCC TRM LADY MERIT 3178** (DLF,HYF,IEF,MSUDF,MDF,DBF)
DOB 2/7/23 | AHA P44438513 | TATTOO 3178 | POLLED

JW X651 TESTED 1857 ET (CHB)
JW 1857 MERIT 21134 (CHB)
 JW 332 VICTORIA 19027

/S MANDATE 66589 ET (SOD)
/S LADY MANDATE 0057H ET
 SR W49 CHRISTA 5036 ET

CED	BW	WW	YW	SC	SCF	MILK	UDDR	TEAT	CW	REA	MARB	\$CHB
+5.8	+2.1	+77	+114	+1.8	+27.4	+33	+1.5	+1.5	+91	+63	+43	+161

EFBEEF TFL U208 TESTED X651 ET (SOD,CHB)
 KCF MISS 22S A261
 JDH VICTOR 719T 33Z ET (SOD,CHB)
 JW 028X DOMINETTE 1417

R LEADER 6964 (SOD)
 /S LADY DOMINO 0158X
 NJW 73S W18 HOMETOWN 10Y ET (SOD,CHB)
 GO MS 719S ADVANCE W49

\$BMI +547
 \$BII +668

- Will be bred AI to ASM 4505B RED MAN 325L ET prior to sale day.
- Lot 5 is the prototypical two-year-old with her combination of phenotype, udder quality and numerical balance that TRM strives to produce, and if the outstanding Red Man heifer calf at her side is any indication of her production capacity, this Merit daughter is destined for greatness.
- The dam of Lot 5 is a direct daughter of the Shaw donor SR W49 Christa 5036 ET, who is a daughter of W49, a sale feature in the 2018 Western Treasures Sale, where she was the \$30,000 1/2 interest selection of GKB Cattle in Texas, while maternal sisters sold for \$8,500 for 1/2 interest to Messi-Hart Farms in Oklahoma and \$25,000 to Silveira Bros. in California.
- Dam posts a progeny ratio of 1@103 for WW.
- Ranks in the top 1% for \$BMI and \$BII; top 2% for WW; top 3% for SC and Udder; top 4% for M&G and Teat; top 5% for SCF and Marb; top 7% for CW, \$CHB and YW; top 17% for Milk; top 23% for REA.

5A **SFCC TRM LADY RED MAN 5056** (DLF,HYF,IEF,MSUDF,MDF,DBF)
DOB 2/27/25 | AHA P44640700 | TATTOO 5056 | HOM. POLLED

NJW 79Z 2311 ENDURE 173D ET (SOD,CHB)
ASM 405B RED MAN 325L ET
 ASM 705 10Y MISS MALLORY 405B

JW 1857 MERIT 21134 (CHB)
SFCC TRM LADY MERIT 3178
 /S LADY MANDATE 0057H ET

KCF BENNETT ENCORE Z311 ET (SOD,CHB)
 BW 91H 100W RITA 79Z ET
 NJW 73S W18 HOMETOWN 10Y ET (SOD,CHB)
 ASM 122L MISS 705ET

JW X651 TESTED 1857 ET (CHB)
 JW 332 VICTORIA 19027
 /S MANDATE 66589 ET (SOD)
 SR W49 CHRISTA 5036 ET

CED	BW	WW	YW	SC	SCF	MILK	UDDR	TEAT	CW	REA	MARB	\$CHB
+2.3	+2.5	+70	+109	+1.0	+28.6	+34	+1.4	+1.5	+102	+71	+37	+173

\$BMI +573
 \$BII +685

- Homozygous polled.
- Ranks in the top 1% for SCF, CW, \$BMI and \$BII; top 3% for \$CHB; top 4% for Teat; top 7% for WW and M&G; top 8% for Marb; top 9% for Udder; top 11% for YW; top 14% for Milk and REA.



/S LADY MANDATE 0057H ET
 Dam of Lot 5



SR W49 CHRISTA 5036 ET
 Maternal grandam of Lot 5

Feature spring pair

HEREFORD SPRING ET HEIFER CALF & EMBRYOS | 890F FAMILY



“890F”
cow
family



/S LADY BOOMTOWN 890F ET
Dam of Lot 6 and
Lot 6A embryos



/S LADY ON TARGET 5291C ET
Maternal grandam of Lots 6 and 6A

6 cow SFCC TRM LADY RED MAN 5122 ET

DOB 3/23/25 | AHA P44646424 | TATTOO 5122 | POLLED

NJW 79Z Z311 ENDURE 173D ET (SOD,CHB)
ASM 405B RED MAN 325L ET
ASM 705 10Y MISS MALLORY 405B

KCF BENNETT ENCORE Z311 ET (SOD,CHB)
BW 91H 100W RITA 79Z ET
NJW 73S W18 HOMETOWN 10Y ET (SOD,CHB)
ASM 122L MISS 705ET

/S JBB/AL BOOM TOWN 44608 (SOD,CHB)
/S LADY BOOMTOWN 890F ET
/S LADY ON TARGET 5291C ET

NJW 73S W18 HOMETOWN 10Y ET (SOD,CHB) \$BMI
/S LADY THOR 1271Y +506
HYALITE ON TARGET 936 (SOD) \$BII
/S LADY ADVANCE 8066U +600

CED	BW	WW	YW	SC	SCF	MILK	UDDR	TEAT	CW	REA	MARB	\$CHB
+6.7	+1.5	+64	+99	+1.3	+24.5	+39	+1.3	+1.4	+96	+74	+25	+158

- Sells open.
- This sale feature is another example of how excited we are to present the first progeny of the TRM and Matheny herd sire Red Man, who is the reigning Cattlemen's Congress Champion Polled Hereford Bull.
- The dam of Lot 6 and the Lot 6A embryos was the \$11,500 selection of TRM from the 2021 Shaw Female Sale and is a granddaughter of 8066, the dam of /S TRM Fort Payne 44573, the \$17,500 selection of TRM from the 2016 Shaw Bull Sale, as well as the \$13,250 selection of Upstream Ranch from the 2014 Shaw Bull Sale, and she produced another son that was among the top sellers in the 2013 Shaw Bull Sale.
- Dam records 4@108 for WW.
- Ranks in the top 3% for CW; top 4% for Milk, \$BMI and \$BII; top 5% for SCF and M&G; top 8% for \$CHB; top 11% for REA; top 13% for Teat; top 21% for Marb; top 22% for WW; top 23% for CED and SC; top 25% for BW.
- Recipient dam is a nine-year-old registered Angus cow and is included in the price bid if immediate delivery is taken, or the buyer can choose to take possession of the calf at weaning at the buyer's risk.

6A embryos RED MAN X LADY 890F

4 Conventional Grade 1 Embryos

NJW 79Z Z311 ENDURE 173D ET (SOD,CHB)
ASM 405B RED MAN 325L ET
ASM 705 10Y MISS MALLORY 405B

KCF BENNETT ENCORE Z311 ET (SOD,CHB)
BW 91H 100W RITA 79Z ET
NJW 73S W18 HOMETOWN 10Y ET (SOD,CHB)
ASM 122L MISS 705ET

/S JBB/AL BOOM TOWN 44608 (SOD,CHB)
/S LADY BOOMTOWN 890F ET
/S LADY ON TARGET 5291C ET

NJW 73S W18 HOMETOWN 10Y ET (SOD,CHB) \$BMI
/S LADY THOR 1271Y +514
HYALITE ON TARGET 936 (SOD) \$BII
/S LADY ADVANCE 8066U +613

CED	BW	WW	YW	SC	SCF	MILK	UDDR	TEAT	CW	REA	MARB	\$CHB
+6.7	+1.5	+64	+99	+1.3	+24.5	+39	+1.3	+1.4	+96	+73	+232	+168

- Selling four conventional embryos with a guarantee of at least two pregnancies to result if implanted by a certified embryologist within one year of purchase.
- This mating will result in full sibs to the spring ET heifer calf selling as Lot 6, combining Red Man, the reigning Cattlemen's Congress Champion Polled Hereford Bull, with 890F, the \$11,500 selection of TRM from the 2021 Shaw sale that continues to make a name for herself as an elite donor at TRM.
- The sire of this mating ranks in the top 1% for CW, REA, \$BMI, \$BII and \$CHB; top 3% for SCF; top 6% for CED; top 7% for Marb; top 10% for Milk and M&G; top 13% for Teat; top 15% for BW; top 18% for YW; top 24% for WW.
- The dam of this mating ranks in the top 2% for Milk; top 3% for M&G; top 7% for SC and SCF; top 8% for \$BMI and \$BII; top 15% for CW; top 21% for WW and Marb.

CATTELMEN'S
CONGRESS
2025



ASM 405B RED MAN 325L ET
2025 Cattlemen's Congress Grand Champion
Polled Hereford Bull



“4007B”
cow family



7 cow **SFCC LADY MASTERPLAN 2233 ET** (DLF,HYF,IEF,MSUDF,MDF,DBF)
DOB 9/26/22 | AHA P44439277 | TATTOO 2233 | POLLED

KCF BENNETT STRATEGY Z303 ET (CHB)
TH MASTERPLAN 183F (CHB)
TH 512X 145Y DOMINETTE 57B

/S PEERLESS 1571Y
/S LADY PEERLESS 4007B
/S LADY DOMINO 1054Y

SCHU-LAR ON TARGET 22S (SOD,CHB)
KCF MISS REVOLUTION X338 ET
FTF PROSPECTOR 145Y (SOD)
TH 122 711 DOMINETTE 512X ET
HH ADVANCE 286M 1ET (SOD)
/S LADY DOMINO 652S
UPS DOMINO 3027 (SOD,CHB)
/S LADY DOMINO 424P (DOD)

SBMI
+437
SBII
+523

CED	BW	WW	YW	SC	SCF	MILK	UDDR	TEAT	CW	REA	MARB	\$CHB
+9.5	+1.6	+62	+93	+1.3	+21.4	+24	+1.5	+1.5	+75	+58	+19	+130

- Bred AI 12/20/24 to JW 1857 MERIT 21134. PE 12/25/24 to 3/1/25 to /S PERFECTO 00572 ET. Checked safe.
- Leading off the fall heifer calf splits in this offering is a red-eyed, phenotypically flawless daughter of /S Lady Peerless 4007B. 4007B was our \$13,500 selection from the 2016 Shaw Female Sale and is now one of our top young Hereford donors, producing the \$24,000 top-selling heifer calf in the 2021 Dixieland Delight Sale, SFCC Lady Fortified 1041 ET, selected by Abby Hill, along with the outstanding daughters that sold as Lots 3, 4A and 4B in the 2022 Dixieland Delight that grossed \$36,000 to average an impressive \$12,000.
- Dam posts progeny ratios of 7@94 for BW, 6@107 for WW, 3@102 for YW and 1@108 for RE.
- The third dam of Lot 7 is an AHA Dam of Distinction.
- Ranks in the top 3% for Udder; top 4% for Teat; top 10% for CED; top 17% for SCF; top 18% for SBMI and SBII; top 23% for SC.

7A cow **SFCC TRM LADY DEVOUT 4516** (DLF,HYF,IEF,MSUDF,MDF,DBF)
DOB 9/9/24 | AHA 44619777 | TATTOO 4516 | HORNED

KCF BENNETT DEVOUT B716 ET (SOD)
JW B716 DEVOUT 20183
JW 936 VICTORIA 1606

TH MASTERPLAN 183F (CHB)
SFCC LADY MASTERPLAN 2233 ET
/S LADY PEERLESS 4007B

CHURCHILL SENSATION 028X (SOD)
KCF MISS PROFICIENT U201
HYALITE ON TARGET 936 (SOD)
KCF MISS REVOLUTION X530

KCF BENNETT STRATEGY Z303 ET (CHB)
TH 512X 145Y DOMINETTE 57B
/S PEERLESS 1571Y
/S LADY DOMINO 1054Y

SBMI
+460
SBII
+565

CED	BW	WW	YW	SC	SCF	MILK	UDDR	TEAT	CW	REA	MARB	\$CHB
+9.9	+0.7	+67	+103	+1.6	+22.9	+28	+1.5	+1.4	+74	+68	+39	+143

- Sells open.
- This red-eyed show and donor prospect is a carbon copy of her outstanding dam phenotypically while improving on her dam's already impressive numerical profile.
- Ranks in the top 3% for Udder; top 7% for SC and Marb; top 8% for CED and SBII; top 10% for SCF; top 11% for SBMI; top 13% for Teat; top 14% for BW and WW; top 17% for REA; top 18% for SCHB; top 22% for YW.

HEREFORD EMBRYO PACKAGES | 4007B FAMILY



/S LADY PEERLESS 4007B
Dam of Lot 7 and Lot 7B embryos



SFCC TRM LADY ENDURE 0244 ET
Dam of Lot 8 embryos,
maternal sister to Lot 7 and to Lot 7B embryos

7B RED MAN X LADY 4007B embryos 4 Conventional Grade 1 Embryos

NJW 79Z 2311 ENDURE 173D ET (SOD,CHB)
ASM 405B RED MAN 325L ET
ASM 705 10Y MISS MALLORY 405B

KCF BENNETT ENCORE Z311 ET (SOD,CHB)
BW 91H 100W RITA 79Z ET
NJW 73S W18 HOMETOWN 10Y ET (SOD,CHB)
ASM 122L MISS 705ET

/S PEERLESS 1571Y
/S LADY PEERLESS 4007B
/S LADY DOMINO 1054Y

HH ADVANCE 286M 1ET (SOD) \$BMI
/S LADY DOMINO 652S +508
UPS DOMINO 3027 (SOD,CHB) \$BII
/S LADY DOMINO 424P (DOD) +596

(Mating EPDs)	CED	BW	WW	YW	SC	SCF	MILK	UDDR	TEAT	CW	REA	MARB	\$CHB
	+11.4	+0.3	+58	+87	+0.8	+24.9	+36	+1.3	+1.4	+93	+70	+26	+156

- Selling four conventional embryos with a guarantee of at least two pregnancies to result if implanted by a certified embryologist within one year of purchase.
- This mating combines Red Man, the reigning Cattleman's Congress Champion Polled Hereford Bull, with 4007B, our \$13,500 selection from the 2016 Shaw Cattle Co. Sale and now one of our top young Hereford donors, producing the \$24,000 top-selling heifer calf in the 2021 Dixieland Delight Sale, SFCC Lady Fortified 1041 ET, selected by Abby Hill, along with the outstanding daughters that sold as Lots 3, 4A and 4B in the 2022 Dixieland Delight that grossed \$36,000 to average an impressive \$12,000.
- 4007B records progeny ratios of 7@94 for BW, 6@107 for WW, 3@102 for YW and 1@108 for REA and has five daughters in production with an average nursing ratio of 108.
- The sire of this mating ranks in the top 1% for CW, REA, \$BMI, \$BII and \$CHB; top 3% for SCF; top 6% for CED; top 7% for Marb; top 10% for Milk and M&G; top 13% for Teat; top 15% for BW; top 18% for YW; top 24% for WW.
- The dam of this mating ranks in the top 5% for CED and SCF; top 7% for BW; top 8% for Milk; top 11% for \$BMI; top 13% for Teat; top 15% for \$BII.

8 CHURCHILL EQUITY X LADY 0244 embryos 4 Conventional Grade 1 Embryos

JW 1857 MERIT 21134 (CHB)
CHURCHILL EQUITY 3316L ET
CHURCHILL LADY 023H ET

JW X651 TESTED 1857 ET (CHB)
JW 33Z VICTORIA 19027
NJW 76S 27A LONG RANGE 203D ET
JH AH MERCEDES 11E ET

NJW 79Z 2311 ENDURE 173D ET (SOD,CHB)
SFCC TRM LADY ENDURE 0244 ET
/S LADY PEERLESS 4007B

KCF BENNETT ENCORE Z311 ET (SOD,CHB) \$BMI
BW 91H 100W RITA 79Z ET +480
/S PEERLESS 1571Y \$BII
/S LADY DOMINO 1054Y +582

(Mating EPDs)	CED	BW	WW	YW	SC	SCF	MILK	UDDR	TEAT	CW	REA	MARB	\$CHB
	+12.9	+0.4	+69	+107	+1.6	+21.6	+33	+1.3	+1.2	+105	+86	+35	+179

- Selling four conventional embryos with a guarantee of at least two pregnancies to result if implanted by a certified embryologist within one year of purchase.
- The sire of this mating, Equity, is one of the most unique calving ease bulls to surface in some time. Equity separates himself with immaculate muscle shape, body mass in a special pedigree and an EPD profile that ranks in the top 1% for CW and \$CHB; top 3% for CED; top 4% for SC; top 5% for WW; top 6% for BW and Marb; top 8% for REA and YW; top 11% for \$BII; top 16% for M&G; top 17% for \$BMI.
- The dam to this mating is one of our favorite young donors and is a direct daughter of 4007B that ranks in the top 2% for CW; top 3% for REA, \$BMI and \$BII; top 4% for CED, SCF and \$CHB; top 7% for Milk and M&G; top 15% for SC; top 18% for Marb; top 21% for WW; top 22% for BW.
- The grandam of this mating records progeny ratios of 7@94 for BW, 6@107 for WW, 3@102 for YW and 1@108 for REA and has five daughters in production with an average nursing ratio of 108.
- Maternal sib embryos by Thomas County sold for \$1,200 each in the 2024 Dixieland Delight.



SFCC LADY FORTIFIED 1041 ET
\$24,000 maternal sister to Lot 7, Lot 7B and
to the donor dam of Lot 8



SFCC TRM LADY ENDURE 1138 ET
\$15,000 maternal sister to Lot 7, Lot 7B and
to the donor dam of Lot 8



SFCC TRM LADY HERITAGE 9124
\$15,000 maternal sister to Lot 7, Lot 7B and
to the donor dam of Lot 8



/S MANDATE 66589 ET
Sire of Lots 9-11



Fall heifer calf
splits

9
cow
/S LADY MANDATE 247K (DLF,HYF,IEF,MSUDF,DBP)
DOB 1/7/22 | AHA P44334757 | TATTOO 247 | POLLED
R LEADER 6964 (SOD)
/S MANDATE 66589 ET (SOD)
/S LADY DOMINO 0158X

/S PEERLESS 55000 ET (SOD)
/S LADY PEERLESS 015H
/S LADY INTEGRITY 8164F ET
/S PEERLESS 1571Y \$BMI
/S LADY DOMINO 9144W +406
/S INTEGRITY 55498 ET \$BII
LOEWEN MISS ON TARGET 10Y 1A +481

CED	BW	WW	YW	SC	SCF	MILK	UDDR	TEAT	CW	REA	MARB	\$CHB
+2.9	+3.7	+69	+99	+1.7	+21.4	+24	+1.4	+1.5	+73	+34	-.11	+85

- Bred AI 12/20/24 to ASM 405B RED MAN 325L ET. PE 12/25/24 to 3/1/25 to /S PERFECTO 00572 ET. Checked safe.
- This well pigmented young cow leads off a set of Mandate paternal sisters with outstanding heifer calves at their side.
- Lot 9 descends from Loewen Miss On Target 10Y 1A, Shaw's selection from the Loewen dispersal who was moderate in size with tons of rib and volume, heavy pigmentation and a gorgeous udder, just like this Mandate daughter.
- The foundation fourth dam of Lot 9, 10Y, is one of the best 33N daughters produced and was a great donor for Double Seven Ranch and Harrison Cattle Company. A full sister to Loewen Homerun, a resident herd sire for Double Seven Ranch, 10Y had one of the best udders you would ever see on a Hereford female.
- Ranks in the top 4% for SC and Teat; top 9% for Udder; top 10% for WW; top 17% for SCF.

9A
cow
SFCC TRM LADY DEVOUT 4547 (DLF,HYF,IEF,MSUDF,MDF,DBF)
DOB 9/17/24 | AHA 44619798 | TATTOO 4547 | HORNED
KCF BENNETT DEVOUT 8716 ET (SOD)
JW 8716 DEVOUT 20183
JW 936 VICTORIA 1606

/S MANDATE 66589 ET (SOD)
/S LADY MANDATE 247K
/S LADY PEERLESS 015H
CHURCHILL SENSATION 028X (SOD)
KCF MISS PROFICIENT U201
HYALITE ON TARGET 936 (SOD)
KCF MISS REVOLUTION X530
R LEADER 6964 (SOD)
/S LADY DOMINO 0158X
/S PEERLESS 55000 ET (SOD)
/S LADY INTEGRITY 8164F ET

CED	BW	WW	YW	SC	SCF	MILK	UDDR	TEAT	CW	REA	MARB	\$CHB
+8.7	+1.9	+74	+109	+1.8	+21.5	+28	+1.4	+1.5	+77	+66	+0.04	+106

- Sells open.
- A fancy show and donor prospect that is as impressive on paper as she is to the eye, ranking in the top 3% for SC; top 4% for WW and Teat; top 9% for Udder; top 11% for YW; top 12% for CED; top 16% for SCF and M&G; top 19% for REA; top 22% for \$BII; top 23% for \$BMI.
- Dam records 1@97 for BW.

HEREFORD FALL BRED COW/HEIFER CALF SPLITS



11 /S LADY MANDATE 249K (DLF,HYF,IEF,MSUDF)
DOB 1/7/22 | AHA P44334767 | TATTOO 249 | POLLED

R LEADER 6964 (SOD)
/S MANDATE 66589 ET (SOD)
/S LADY DOMINO 0158X

R EXCITEMENT 4356
/S LADY EXCITEMENT 073H ET
/S LADY RED BULL 5228C

HYALITE ON TARGET 936 (SOD)
R MISS REVOLUTION 1009 (DOD)
SHF RIB EYE M326 R117 (SOD)
/S LADY DOMINO 652S

R NEW YORK 5083 (CHB)
R MISS ON TARGET 384
SCHU-LAR RED BULL 18X (SOD)
/S LADY ADVANCE 729IT

CED	BW	WW	YW	SC	SCF	MILK	UDDR	TEAT	CW	REA	MARB	\$BBI	\$BII	\$CHB
+5.7	+0.7	+62	+96	+1.0	+26.0	+22	+1.4	+1.4	+70	+24	+41	+612	+505	+139

- Bred AI 12/20/24 to ASM 405B RED MAN 325L ET. PE 12/25/24 to 3/1/25 to /S PERFECTO 00572 ET. Checked safe.
- Lot 11 stems from one of the most prolific cow families in the Shaw herd that produced Lots 1 through 3 in the 2015 Shaw Female Sale as well as seven donor cows, including the third dam of Lot 11, 7291, as well as 9144, 1010, 12A, 742, 821H and 823H, and has placed herd bulls in reputation programs such as K&B, Carmichael, Sonoma Mountain Herefords, Van Newkirk, Udy Cattle, Lee Livestock and Genex.
- Records an average progeny BW ratio of 1@97 from a dam that records 2@113 for WW.
- Ranks in the top 3% for SCF and \$BII; top 4% for \$BBI; top 6% for Marb; top 9% for Udder; top 13% for Teat; top 14% for BW; top 21% for \$CHB.

10 /S LADY MANDATE 221K (DLF,HYF,IEF,MSUDF)
DOB 1/5/22 | AHA P44334748 | TATTOO 221 | POLLED

R LEADER 6964 (SOD)
/S MANDATE 66589 ET (SOD)
/S LADY DOMINO 0158X

/S JBB/AL BOOM TOWN 44608 (SOD,CHB)
/S LADY BOOM TOWN 039H
/S LADY REVOLUTION 861F ET

NJW 73S W18 HOMETOWN 10Y ET (SOD,CHB)
/S LADY THOR 1271Y
/S REVOLUTION 66128 (CHB)
/S LADY PEERLESS 52C ET

CED	BW	WW	YW	SC	SCF	MILK	UDDR	TEAT	CW	REA	MARB	\$BBI	\$BII	\$CHB
+5.4	-0.7	+48	+78	+0.9	+25.5	+25	+1.3	+1.3	+63	+22	+32	+481	+567	+120

- Bred AI 12/20/24 to ASM 405B RED MAN 325L ET. PE 12/25/24 to 3/1/25 to /S PERFECTO 00572 ET. Checked safe.
- An elegant and feminine first-calf Mandate daughter with a prototypical udder. 221K should be an excellent candidate to produce valuable calving-ease herd sire prospects.
- Dam records 1@117 for WW.
- Ranks in the top 3% for SCF, top 5% for BW, top 7% for \$BBI, top 8% for \$BII and top 12% for Marb.



10A SFCC TRM LADY DEVOUT 4548 (DLF,HYF,IEF,MSUDF,MDF,DBC)
DOB 9/17/24 | AHA P44619800 | TATTOO 4548 | HOM. POLLED

KCF BENNETT DEVOUT 8716 ET (SOD)
JW 8716 DEVOUT 20183
JW 936 VICTORIA 1606

CHURCHILL SENSATION 028X (SOD)
KCF MISS PROFICIENT U201
HYALITE ON TARGET 936 (SOD)
KCF MISS REVOLUTION X530

/S MANDATE 66589 ET (SOD)
/S LADY MANDATE 221K
/S LADY BOOM TOWN 039H

R LEADER 6964 (SOD)
/S LADY DOMINO 0158X
/S JBB/AL BOOM TOWN 44608 (SOD,CHB)
/S LADY REVOLUTION 861F ET

CED	BW	WW	YW	SC	SCF	MILK	UDDR	TEAT	CW	REA	MARB	\$BBI	\$BII	\$CHB
+9.4	-0.6	+60	+99	+1.2	+26.7	+29	+1.5	+1.5	+68	+45	+48	+616	+508	+140

- Sells open.
- This Devout 20183 daughter offers a high CED EPD with a tremendous spread from BW to YW and elite values for the maternal genetic predictors for sustained cow fertility, udder quality and teat size while also presenting impressive numbers for marbling and \$CHB.
- Ranks in the top 2% for SCF; top 3% Udder, \$BBI and \$BII; top 4% for Teat and Marb; top 5% for BW; top 10% for CED; top 21% for \$CHB.

11A SFCC TRM LADY DEVOUT 4556 (DLF,HYF,IEF,MSUDF,MDF,DBF)
DOB 9/18/24 | AHA P44619806 | TATTOO 4556 | POLLED

KCF BENNETT DEVOUT 8716 ET (SOD)
JW 8716 DEVOUT 20183
JW 936 VICTORIA 1606

CHURCHILL SENSATION 028X (SOD)
KCF MISS PROFICIENT U201
HYALITE ON TARGET 936 (SOD)
KCF MISS REVOLUTION X530

/S MANDATE 66589 ET (SOD)
/S LADY MANDATE 249K
/S LADY EXCITEMENT 073H ET

R LEADER 6964 (SOD)
/S LADY DOMINO 0158X
R EXCITEMENT 4356
/S LADY RED BULL 5228C

CED	BW	WW	YW	SC	SCF	MILK	UDDR	TEAT	CW	REA	MARB	\$BBI	\$BII	\$CHB
+11.1	+0.7	+63	+95	+1.2	+23.9	+29	+1.5	+1.5	+65	+47	+33	+555	+455	+119

- Sells open.
- A visually impressive show and donor prospect with an outstanding numerical profile.
- Ranks in the top 3% for Udder; top 4% for Teat; top 6% for CED and SCF; top 10% for \$BII; top 11% for Marb; top 12% for \$BBI; top 14% for BW; top 25% for WW.
- Dam records 1@97 for BW.



BG LCC 11B PERFECTO 84F
Daughters sell as Lots 12, 13 and 24



JW 8716 DEVOUT 20183
Sire of ten of the fall calves selling



12 **/S LADY PERFECTO 262K** (DLF,HYF,IEF,MSUDF,MDP)
DOB 1/8/22 | AHA P44335721 | TATTOO 262 | POLLED

LCX PERFECTO 11B ET (SOD)
BG LCC 11B PERFECTO 84F
BG 100W NICKY 31C (DOD)

/S MANDATE 66589 ET (SOD)
/S LADY MANDATE 057H
/S LADY INTEGRITY 877F ET

CED	BW	WW	YW	SC	SCF	MILK	UDDR	TEAT	CW	REA	MARB	\$CHB
+10.0	-0.7	+61	+95	+0.5	+25.3	+32	+1.5	+1.6	+72	+54	+0.3	+106

- Bred AI 12/20/24 to JW 1857 MERIT 21134. PE 12/25/24 to 3/1/25 to /S PERFECTO 00572 ET. Checked safe.
- This big bodied, well pigmented daughter of Perfecto is perfect uddered and visually stunning with an outstanding numerical profile.
- Dam records 3@88 for BW.
- The third dam of Lot 12 is an AHA Dam of Distinction.
- Ranks in the top 1% for Teat; top 3% for Udder; top 4% for SCF; top 5% for BW; top 6% for \$BMI; top 8% for CED; top 9% for \$BII; top 24% for Milk.

12A **SFCC TRM LADY DEVOUT 4553** (DLF,HYF,IEF,MSUDF,MDF,DBC)
DOB 9/18/24 | AHA 44619802 | TATTOO 4553 | HORNED

KCF BENNETT DEVOUT 8716 ET (SOD)
JW 8716 DEVOUT 20183
JW 936 VICTORIA 1606

BG LCC 11B PERFECTO 84F
/S LADY PERFECTO 262K
/S LADY MANDATE 057H

CED	BW	WW	YW	SC	SCF	MILK	UDDR	TEAT	CW	REA	MARB	\$CHB
+14.6	-1.3	+65	+102	+1.2	+23.8	+33	+1.6	+1.7	+66	+44	+1.5	+105

- Sells open.
- Offering the same impressive phenotype as her dam, this Devout 20183 daughter complements her looks with breed elite values for udder quality and calving ease.
- Dam records 1@96 for BW.
- Ranks in the top 1% for Udder and Teat; top 2% for CED; top 4% for BW; top 7% for SCF; top 14% for \$BMI and \$BII; top 16% for M&G; top 18% for WW; top 21% for Milk; top 24% for YW.

HEREFORD FALL BRED COW/HEIFER CALF SPLIT



13 /S LADY PERFECTO 287K (DLF,HYF,IEF,MSUDF) DOB 1/11/22 | AHA P44335723 | TATTOO 287 | POLLED

LCX PERFECTO 11B ET (SOD)
BG LCC 11B PERFECTO 84F
BG 100W NICKY 31C (DOD)

/S MANDATE 66589 ET (SOD)
/S LADY MANDATE 0060H
/S LADY HOMETOWN 7106E (DOD)

CED	BW	WW	YW	SC	SCF	MILK	UDDR	TEAT	CW	REA	MARB	\$BBI	\$BBI	\$BBI
+6.9	+2.7	+71	+117	+0.8	+21.9	+37	+1.4	+1.4	+77	+70	-.04	+118		

- Bred AI 12/20/24 to ASM 405B RED MAN 325L ET. PE 12/25/24 to 3/1/25 to /S PERFECTO 00572 ET. Checked safe.
- This eye-catching Perfecto daughter couples her unique markings with an impressive EPD spread from BW to YW.
- The grandam of Lot 12 is an AHA Dam of Distinction.
- Ranks in the top 4% for M&G; top 5% for YW; top 6% for WW; top 7% for Milk; top 9% for Udder; top 13% for Teat; top 14% for SCF and \$BBI; top 15% for REA; top 16% for \$BBI; top 22% for CED.

13A SFCC TRM LADY DEVOUT 4545 (DLF,HYF,IEF,MSUDF,MDF,DBC) DOB 9/17/24 | AHA P44619794 | TATTOO 4545 | POLLED

KCF BENNETT DEVOUT B716 ET (SOD)
JW B716 DEVOUT 20183
JW 936 VICTORIA 1606

BG LCC 11B PERFECTO 84F
/S LADY PERFECTO 287K
/S LADY MANDATE 0060H

CED	BW	WW	YW	SC	SCF	MILK	UDDR	TEAT	CW	REA	MARB	\$BBI	\$BBI	\$BBI
+11.9	+0.7	+71	+114	+1.7	+23.7	+36	+1.5	+1.6	+67	+46	+16	+113		

- Sells open.
- A shorter marked version of her dam with a monster set of math.
- Dam records 1@90 for BW.
- Ranks in the top 1% for Teat; top 3% for Udder; top 4% for CED and SC; top 5% for M&G; top 6% for WW and YW; top 7% for SCF; top 9% for Milk; top 10% for \$BBI; top 12% for \$BBI; top 14% for BW.

14 /S LADY MASTERPLAN 2055K (DLF,HYF,IEF,MSUDF,DBP)

DOB 1/29/22 | AHA P44334790 | TATTOO 2055 | POLLED

KCF BENNETT STRATEGY Z303 ET (CHB)
TH MASTERPLAN 183F (CHB)
TH 512X 145Y DOMINETTE 57B

SCHU-LAR ON TARGET 22S (SOD,CHB)
KCF MISS REVOLUTION X338 ET
FTF PROSPECTOR 145Y (SOD)
TH 122 71I DOMINETTE 512X ET

/S MANDATE 66589 ET (SOD)
/S LADY MANDATE 9410G ET
/S LADY ADVANCE 837U ET

R LEADER 6964 (SOD) \$BMI
/S LADY DOMINO 0158X +495
HH ADVANCE 286M 1ET (SOD) \$BII
/S LADY PEERLESS 1010L (DOD) +596

CED	BW	WW	YW	SC	SCF	MILK	UDDR	TEAT	CW	REA	MARB	\$CHB
+11.2	-0.8	+63	+105	+1.3	+25.4	+25	+1.6	+1.6	+69	+50	+33	+136

- Bred AI 12/20/24 to JW 1857 MERIT 21134. PE 12/25/24 to 3/1/25 to /S PERFECTO 00572 ET. Checked safe.
- Posts a progeny ratio of 1@93 for BW from a dam that records 3@95 for BW. That coupled with her CED and BW EPD combination makes her an excellent candidate to produce valuable calving-ease bulls.
- The third dam of Lot 14 is an AHA Dam of Distinction.
- Ranks in the top 1% for Udder and Teat; top 3% for SCF; top 4% for \$BII; top 5% for CED, BW and \$BMI; top 11% for Marb; top 17% for YW; top 23% for SC; top 25% for WW and \$CHB.



15 /S LADY MASTERPLAN 2041K (DLF,HYF,IEF,MSUDF,DBP)

DOB 1/23/22 | AHA P44334689 | TATTOO 2041 | POLLED

KCF BENNETT STRATEGY Z303 ET (CHB)
TH MASTERPLAN 183F (CHB)
TH 512X 145Y DOMINETTE 57B

SCHU-LAR ON TARGET 22S (SOD,CHB)
KCF MISS REVOLUTION X338 ET
FTF PROSPECTOR 145Y (SOD)
TH 122 71I DOMINETTE 512X ET

/S MANDATE 66589 ET (SOD)
/S LADY MANDATE 9011G ET
/S LADY ADVANCE 837U ET

R LEADER 6964 (SOD) \$BMI
/S LADY DOMINO 0158X +458
HH ADVANCE 286M 1ET (SOD) \$BII
/S LADY PEERLESS 1010L (DOD) +566

CED	BW	WW	YW	SC	SCF	MILK	UDDR	TEAT	CW	REA	MARB	\$CHB
+7.4	-0.2	+67	+106	+2.0	+22.3	+28	+1.5	+1.4	+73	+46	+42	+147

- Bred AI 12/20/24 to JW 1857 MERIT 21134. PE 12/25/24 to 3/1/25 to /S PERFECTO 00572 ET. Checked safe.
- This angular and feminine female records 1@82 for BW from a dam that posts progeny ratios of 2@101 for WW.
- The third dam of Lot 15 is an AHA Dam of Distinction.
- Ranks in the top 1% for SC; top 3% for Udder; top 6% for Marb; top 7% for BW; top 8% for \$BII; top 11% for \$BMI; top 12% for SCF; top 13% for Teat; top 14% for WW and \$CHB; top 16% for YW; top 19% for CED.



14A SFCC TRM LADY DEVOUT 4549 (DLF,HYF,IEF,MSUDF,MDF,DBF)

DOB 9/17/24 | AHA P44619801 | TATTOO 4549 | POLLED

KCF BENNETT DEVOUT B716 ET (SOD)
JW B716 DEVOUT 20183
JW 936 VICTORIA 1606

CHURCHILL SENSATION 028X (SOD)
KCF MISS PROFICIENT U201
HYALITE ON TARGET 936 (SOD)
KCF MISS REVOLUTION X530

TH MASTERPLAN 183F (CHB)
/S LADY MASTERPLAN 2055K
/S LADY MANDATE 9410G ET

KCF BENNETT STRATEGY Z303 ET (CHB) \$BMI
TH 512X 145Y DOMINETTE 57B +514
/S MANDATE 66589 ET (SOD) \$BII
/S LADY ADVANCE 837U ET +621

CED	BW	WW	YW	SC	SCF	MILK	UDDR	TEAT	CW	REA	MARB	\$CHB
+14.9	-1.0	+61	+94	+1.6	+28.6	+30	+1.5	+1.7	+55	+32	+43	+116

- Sells open.
- You will love the rib, volume and maternal look that this Devout 20183 daughter offers.
- Ranks in the top 1% for SCF and Teat; top 2% for CED; top 3% for Udder, \$BMI and \$BII; top 4% for BW; top 5% for Marb; top 7% for SC.

15A SFCC TRM LADY DEVOUT 4541 (DLF,HYF,IEF,MSUDF,MDF,DBC)

DOB 9/16/24 | AHA 44619792 | TATTOO 4541 | HORNED

KCF BENNETT DEVOUT B716 ET (SOD)
JW B716 DEVOUT 20183
JW 936 VICTORIA 1606

CHURCHILL SENSATION 028X (SOD)
KCF MISS PROFICIENT U201
HYALITE ON TARGET 936 (SOD)
KCF MISS REVOLUTION X530

TH MASTERPLAN 183F (CHB)
/S LADY MASTERPLAN 2041K
/S LADY MANDATE 9011G ET

KCF BENNETT STRATEGY Z303 ET (CHB) \$BMI
TH 512X 145Y DOMINETTE 57B +445
/S MANDATE 66589 ET (SOD) \$BII
/S LADY ADVANCE 837U ET +553

CED	BW	WW	YW	SC	SCF	MILK	UDDR	TEAT	CW	REA	MARB	\$CHB
+16.3	-1.9	+66	+103	+1.6	+22.5	+29	+1.4	+1.5	+71	+43	+42	+137

- Sells open.
- Check out the CED EPD and the BW to YW spread this Devout 20183 daughter possesses while offering attractive numerical balance for all measurable traits.
- Dam records 1@82 for BW.
- Ranks in the top 1% for CED; top 3% for BW; top 4% for Teat; top 6% for Marb; top 7% for SC; top 9% for Udder; top 10% for \$BII; top 11% for SCF; top 15% for \$BMI; top 17% for WW; top 22% for YW; top 24% for \$CHB.

HEREFORD FALL BRED COW/HEIFER CALF SPLIT



16
cow
/S LADY HIGHLAND 2047K (DLF,HYF,IEF,MSUDF)
DOB 1/25/22 | AHA P44334788 | TATTOO 2047 | POLLED
TH 90U 17Y LAMBEAU 148B
\$16 782B HIGHLAND 84E
RANGELINE 511X MOLASSES782BET

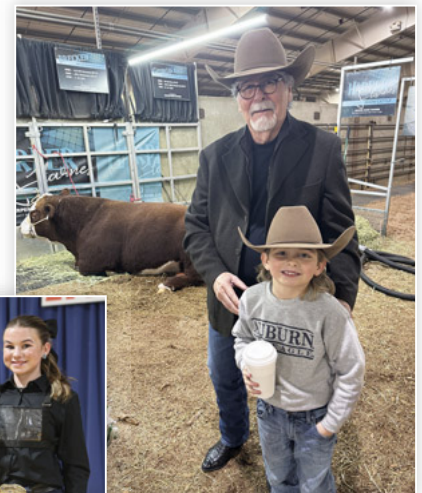
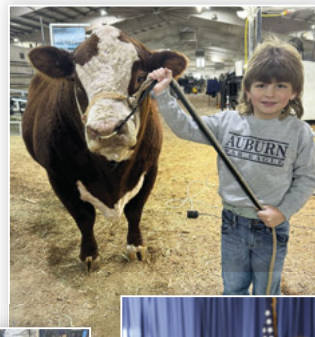
													\$BMI
													+405
													\$BII
													+488
CED	BW	WW	YW	SC	SCF	MILK	UDDR	TEAT	CW	REA	MARB	\$CHB	
+9.5	+0.2	+58	+86	+1.7	+19.1	+23	+1.3	+1.3	+71	+54	+22	+130	

- Bred AI 12/20/24 to JW 1857 MERIT 21134. PE 12/25/24 to 3/1/25 to /S PERFECTO 00572 ET. Checked safe.
- Wait until you see the outstanding heifer calf at the side of this productive young cow!
- Traces to the prolific Shaw donor /S Lady Domino 424P, who is an AHA Dam of Distinction.
- Dam records 1@113 for WW.
- Ranks in the top 4% for SC; top 10% for CED and BW; top 13% for SCF.

16a
cow
SFCC TRM LADY DEVOUT 4515 (DLF,HYF,IEF,MSUDF,MDF,DBC)
DOB 9/9/24 | AHA P44619776 | TATTOO 4515 | HOM. POLLED
KCF BENNETT DEVOUT B716 ET (SOD)
JW B716 DEVOUT 20183
JW 936 VICTORIA 1606

													\$BMI
													+432
													\$BII
													+529
CED	BW	WW	YW	SC	SCF	MILK	UDDR	TEAT	CW	REA	MARB	\$CHB	
+15.9	-1.6	+58	+84	+1.6	+22.0	+27	+1.5	+1.5	+62	+44	+39	+125	

- Sells open.
- This homozygous polled, red-eyed daughter of Devout 20183 is sure to be among the phenotypic favorites of the fall heifer calves in the sale.
- Dam records 1@76 for BW.
- Ranks in the top 1% for CED; top 3% for BW and Udder; top 4% for Teat; top 7% for SC and Marb; top 16% for \$BII; top 19% for \$BMI.





17 **/S LADY HIGHLAND 2038K** (DLF,HYF,IEF,MSUDF)
DOB 1/21/22 | AHA P44334786 | TATTOO 2038 | POLLED

TH 90U 17Y LAMBEAU 148B
\$16 782B HIGHLAND 84E
RANGELINE 511X MOLASSES782BET

/S MANDATE 66589 ET (SOD)
/S LADY MANDATE 052H
/S LADY BOOM TOWN 8143F

TH 22R 16S LAMBEAU 17Y (SOD)
TH 80N 45P GEMINI 90U (DOD)
NJW 98S R117 RIBEYE 88X ET (SOD)
TH 122 71I DOMINETTE 511X ET
R LEADER 6964 (SOD)
/S LADY DOMINO 0158X
/S JBB/AL BOOM TOWN 44608 (SOD,CHB)
JET MS E902 (DOD)

\$BMI
+399
\$BII
+482
\$CHB
+132

CED	BW	WW	YW	SC	SCF	MILK	UDDR	TEAT	CW	REA	MARB	\$CHB
+7.7	-0.7	+50	+84	+1.4	+19.1	+26	+1.5	+1.5	+65	+31	+32	+132

- Bred AI 12/20/24 to JW 1857 MERIT 21134. PE 12/25/24 to 3/1/25 to /S PERFECTO 00572 ET. Checked safe.
- A well pigmented, big ribbed, powerfully designed Highland 84E daughter whose third dam is an AHA Dam of Distinction.
- Dam records 1@116 for WW.
- Ranks in the top 3% for Udder; top 4% for Teat; top 5% for BW; top 12% for Marb; top 15% for SC; top 17% for CED.

17A **SFCC TRM LADY DEVOUT 4583** (DLF,HYF,IEF,MSUDF,MDF,DBF)
DOB 10/10/24 | AHA P44619830 | TATTOO 4583 | POLLED

JW 8716 DEVOUT 18051 (CHB)
/S DEVOUT 22097
/S LADY ENDURE 0043H ET

\$16 782B HIGHLAND 84E
/S LADY HIGHLAND 2038K
/S LADY MANDATE 052H

KCF BENNETT DEVOUT 8716 ET (SOD)
JW 936 DOMINETTE 1674 ET
NJW 79Z 2311 ENDURE 1730 ET (SOD,CHB)
/S LADY LEADER 7201E ET

TH 90U 17Y LAMBEAU 148B
RANGELINE 511X MOLASSES782BET
/S MANDATE 66589 ET (SOD)
/S LADY BOOM TOWN 8143F

\$BMI
+455
\$BII
+551
\$CHB
+117

CED	BW	WW	YW	SC	SCF	MILK	UDDR	TEAT	CW	REA	MARB	\$CHB
+7.2	+2.1	+63	+105	+1.5	+23.6	+29	+1.5	+1.5	+60	+41	+28	+117

- Sells open.
- A red-eyed, deep bodied daughter of Devout 22097, whose 24 progeny recorded to date post an average weaning weight ratio of 103.
- Dam records 1@99 for BW.
- Ranks in the top 3% for Udder; top 4% for Teat; top 7% for SCF; top 10% for SC; top 11% for \$BII; top 12% for \$BMI; top 16% for Marb; top 17% for YW; top 20% for CED.

HEREFORD FALL BRED COW/HEIFER CALF SPLITS



18 /S LADY HIGHLAND 275K (DLF,HYF,IEF,MSUDF)

DOB 1/9/22 | AHA P44334777 | TATTOO 275 | POLLED

TH 90U 17Y LAMBEAU 148B
S16 782B HIGHLAND 84E
RANGELINE 511X MOLASSES782BET

/S MANDATE 66589 ET (SOD)
/S LADY MANDATE 046H ET
/S LADY HOMETOWN 6168D ET

TH 22R 16S LAMBEAU 17Y (SOD)
TH 80N 45P GEMINI 90U (DOD)
NJW 98S R117 RIBEYE 88X ET (SOD)
TH 122 71I DOMINETTE 511X ET

R LEADER 6964 (SOD) \$BMI
/S LADY DOMINO 0158X +413
NJW 73S W18 HOMETOWN 10Y ET (SOD,CHB) \$BII
/S LADY DOMINO 145Y +498

CED	BW	WW	YW	SC	SCF	MILK	UDDR	TEAT	CW	REA	MARB	\$CHB
+11.4	+0.9	+56	+89	+1.1	+20.1	+21	+1.4	+1.5	+71	+32	+24	+128

- Bred AI 12/20/24 to JW 1857 MERIT 21134. PE 12/25/24 to 3/1/25 to /S PERFECTO 00572 ET. Checked safe.
- This red-eyed, long-bodied, extra-feminine Highland daughter complements her physical attributes with attractive numerical balance that allows for mating options that fit the needs of any program.
- The \$22,000-valued grandam of Lot 18 sold as Lot 1 in the 2015 Shaw Female Sale to Michael Perez and is a proven donor that has been an integral part of the embryo transplant programs at C&N and Shaw's.
- Dam records 3@93 for BW.
- Ranks in the top 4% for Teat; top 5% for CED; top 9% for Udder; top 16% for BW; top 22% for Marb; top 25% for SCF.

19 /S LADY MASTERPLAN 2031K (DLF,HYF,IEF,MSUDF,DBP)

DOB 1/18/22 | AHA P44334686 | TATTOO 2031 | POLLED

KCF BENNETT STRATEGY Z303 ET (CHB)
TH MASTERPLAN 183F (CHB)
TH 512X 145Y DOMINETTE 57B

/S MANDATE 66589 ET (SOD)
/S LADY MANDATE 9169G ET
/S LADY ADVANCE 834U ET

SCHU-LAR ON TARGET 22S (SOD,CHB)
KCF MISS REVOLUTION X338 ET
FTF PROSPECTOR 145Y (SOD)
TH 122 71I DOMINETTE 512X ET

R LEADER 6964 (SOD) \$BMI
/S LADY DOMINO 0158X +438
HH ADVANCE 286M 1ET (SOD) \$BII
/S LADY PEERLESS 1010L (DOD) +542

CED	BW	WW	YW	SC	SCF	MILK	UDDR	TEAT	CW	REA	MARB	\$CHB
+9.7	+1.3	+64	+112	+1.5	+20.9	+13	+1.6	+1.6	+66	+48	+41	+148

- Bred AI 12/20/24 to JW 1857 MERIT 21134. PE 12/25/24 to 3/1/25 to /S PERFECTO 00572 ET. Checked safe.
- This goggle-eyed, short-marked Masterplan daughter has a picture-perfect udder and an EPD profile that equals her phenotypic balance.
- Third dam is an AHA Dam of Distinction.
- Dam records 3@90 for BW.
- Ranks in the top 1% for Udder and Teat; top 6% for Marb; top 8% for YW; top 9% for CED; top 10% for SC; top 13% for \$BII and \$CHB; top 17% for \$BMI; top 20% for SCF; top 22% for BW and WW.

18A SFCC TRM LADY DEVOUT 4586 (DLF,HYF,IEF,MSUDF,MDF,DBF)

DOB 10/14/24 | AHA P44619832 | TATTOO 4586 | HOM. POLLED

JW 8716 DEVOUT 18051 (CHB)
/S DEVOUT 22097
/S LADY ENDURE 0043H ET

S16 782B HIGHLAND 84E
/S LADY HIGHLAND 275K
/S LADY MANDATE 046H ET

KCF BENNETT DEVOUT 8716 ET (SOD)
JW 936 DOMINETTE 1674 ET
NJW 79Z Z311 ENDURE 173D ET (SOD,CHB)
/S LADY LEADER 7201E ET

TH 90U 17Y LAMBEAU 148B \$BMI
RANGELINE 511X MOLASSES782BET +526
/S MANDATE 66589 ET (SOD) \$BII
/S LADY HOMETOWN 6168D ET +631

CED	BW	WW	YW	SC	SCF	MILK	UDDR	TEAT	CW	REA	MARB	\$CHB
+9.1	+1.1	+61	+100	+1.1	+27.5	+27	+1.4	+1.5	+72	+47	+41	+140

- Sells open.
- A homozygous polled 22097 daughter with a balanced set of genetic predictors.
- Dam records 1@88 for BW.
- Ranks in the top 1% for SCF; top 2% for \$BMI and \$BII; top 4% for Teat; top 6% for Marb; top 9% for Udder; top 11% for CED; top 19% for BW; top 21% for \$CHB.

19A SFCC TRM LADY DEVOUT 4591 (DLF,HYF,IEF,MSUDF,MDF,DBF)

DOB 10/14/24 | AHA P44619835 | TATTOO 4591 | HOM. POLLED

JW 8716 DEVOUT 18051 (CHB)
/S DEVOUT 22097
/S LADY ENDURE 0043H ET

TH MASTERPLAN 183F (CHB)
/S LADY MASTERPLAN 2031K
/S LADY MANDATE 9169G ET

KCF BENNETT DEVOUT 8716 ET (SOD)
JW 936 DOMINETTE 1674 ET
NJW 79Z Z311 ENDURE 173D ET (SOD,CHB)
/S LADY LEADER 7201E ET

KCF BENNETT STRATEGY Z303 ET (CHB) \$BMI
TH 512X 145Y DOMINETTE 57B +496
/S MANDATE 66589 ET (SOD) \$BII
/S LADY ADVANCE 834U ET +603

CED	BW	WW	YW	SC	SCF	MILK	UDDR	TEAT	CW	REA	MARB	\$CHB
+8.1	+2.0	+64	+106	+1.5	+25.9	+20	+1.6	+1.5	+67	+50	+40	+133

- Sells open.
- This homozygous polled donor prospect has genetic predictors for the profit-driven traits of growth and carcass merit while also offering elite values for udder quality, teat size and sustained cow fertility.
- Dam records 1@93 for BW.
- Ranks in the top 1% for Udder; top 3% for SCF; top 4% for Teat, \$BMI and \$BII; top 7% for Marb; top 10% for SC; top 15% for CED; top 17% for YW; top 21% for WW.



77 4B LOEWEN ANGEL 1Z \$277 4R
Third dam of Lot 20



20 cow

EXR ANGEL 2165 (DLF,HYF,IEF,MSUDF,MDF,DBF)

DOB 10/6/22 | AHA 44394439 | TATTOO 2165 | HORNED

BR BELLE AIR 6011 (SOD,CHB)
EXR BANKROLL 8130 ET
EXR LEXUS 4208 ET

GERBER ANODYNE 001A (SOD,CHB)
4B ANGEL 001A 9201
4B ANGEL 7235 ET

BAR S LHF 028 240 (SOD,CHB)
BR BELLE 4082 ET
LSW WCC ABOUT TIME X06
TCC MISS LEXUS 84 ET
KCF BENNETT 9126J R294 (SOD)
GERBER 627S HOLLY 096Y
NJW 135U 10Y HOMETOWN 27A (SOD)
77 4B LOEWEN ANGEL 1Z \$277 4R

CED	BW	WW	YW	SC	SCF	MILK	UDDR	TEAT	CW	REA	MARB	\$CHB
+3.0	+2.3	+52	+84	+0.2	+22.7	+25	+1.2	+1.2	+69	+77	+0.9	+109

- Bred AI 12/20/24 to ASM 405B RED MAN 325L ET. PE 12/25/24 to 3/1/25 to S PERFECTO 00572 ET. Checked safe.
- This daughter of the Reserve National Champion Bull Bankroll is out of a female that Express Ranches selected from Pribil's 4B herd that traces to a foundation donor for the Double Seven, 4B and Loewen herds, 1Z, who is also the grandam of 4B Perfecto 0240, a featured member of the Power Plus lineup at Duff Cattle Co.
- Dam posts progeny ratios of 2@103 for WW and 2@104 for YW.
- Ranks in the top 9% for REA; top 10% for SCF; top 16% for \$BMI; top 22% for \$BII.

20A cow

EXR ANGEL 4072 (DLF,HYF,IEF,MSUDF)

DOB 8/18/24 | AHA P44595426 | TATTOO 4072 | POLLED

RV VALOR 9444G ET (CHB)
BAR JZ ON DEMAND
BAR JZ HANNAH 087B

EXR BANKROLL 8130 ET
EXR ANGEL 2165
4B ANGEL 001A 9201

JDH VICTOR 719T 33Z ET (SOD,CHB)
RV BOBBI 1404
NJW 73S W18 HOMEGROWN 8Y ET (SOD)
BAR JZ VIRGINIA 347Y

BR BELLE AIR 6011 (SOD,CHB)
EXR LEXUS 4208 ET
GERBER ANODYNE 001A (SOD,CHB)
4B ANGEL 7235 ET

CED	BW	WW	YW	SC	SCF	MILK	UDDR	TEAT	CW	REA	MARB	\$CHB
+10.7	+0.6	+60	+95	+0.8	+25.0	+23	+1.3	+1.4	+77	+61	+1.4	+117

- Sells open.
- This On Demand daughter rounds out an impressive set of fall heifer calf splits and offers the pigment, balanced phenotype and numerical profile necessary to make the donor pen in any operation.
- Dam records 1@94 for BW.
- Ranks in the top 4% for \$SCF; top 6% for CED; top 8% for \$BMI; top 10% for \$BII; top 13% for BW and Teat; top 25% for REA.



HEREFORD
FALL BRED COW/BULL CALF SPLIT



Fall bull calf splits



21 cow /S LADY MANDATE 2240K (DLF,HYF,IEF,MSUDF)

DOB 3/3/22 | AHA P44350995 | TATTOO 2240 | POLLED

R LEADER 6964 (SOD)
/S MANDATE 66589 ET (SOD)
/S LADY DOMINO 0158X

HYALITE ON TARGET 936 (SOD)
R MISS REVOLUTION 1009 (DOD)
SHF RIB EYE M326 R117 (SOD)
/S LADY DOMINO 652S

/S TESTED 55576 (CHB)
/S LADY TESTED 8043F
/S LADY ADVANCE 9263W

EFBEEF TFL U208 TESTED X651 ET (SOD,CHB)
/S LADY EFFICIENT 3370A
HH ADVANCE 286M 1ET (SOD)
/S LADY MOM 6218S ET

CED	BW	WW	YW	SC	SCF	MILK	UDDR	TEAT	CW	REA	MARB	\$CHB
+4.4	+1.6	+63	+100	+1.2	+22.5	+30	+1.4	+1.4	+74	+5.4	+1.4	+127

- Bred AI 12/20/24 to ASM 405B RED MAN 325L ET. PE 12/25/24 to 3/1/25 to /S PERFECTO 00572 ET. Checked safe.
- /S Mandate 66589 ET was the \$62,000 1/2 interest top-selling selection of ST Genetics from the 2018 Shaw Bull Sale, and this daughter is another example of the positive impact he has had on the Hereford breed. His daughters are problem free, calf raising machines, and his sons and grandsons are moderate framed, short marked, well pigmented bulls that have the right numbers and get the job done, leaving any cow herd better than they found it.
- Dam posts progeny ratios of 3@105 for WW and 1@101 for YW.
- Ranks in the top 9% for Udder; top 11% for SCF; top 12% for \$BMI; top 13% for Teat and \$BII.

21A bull SFCC TRM DEVOUT 4563 (DLF,HYF,IEF,MSUDF,MDF,DBF)

DOB 9/22/24 | AHA P44619818 | TATTOO 4563 | HOM. POLLED

KCF BENNETT DEVOUT B716 ET (SOD)
JW B716 DEVOUT 20183
JW 936 VICTORIA 1606

CHURCHILL SENSATION 028X (SOD)
KCF MISS PROFICIENT U201
HYALITE ON TARGET 936 (SOD)
KCF MISS REVOLUTION X530

/S MANDATE 66589 ET (SOD)
/S LADY MANDATE 2240K
/S LADY TESTED 8043F

R LEADER 6964 (SOD)
/S LADY DOMINO 0158X
/S TESTED 55576 (CHB)
/S LADY ADVANCE 9263W

CED	BW	WW	YW	SC	SCF	MILK	UDDR	TEAT	CW	REA	MARB	\$CHB
+9.8	+0.8	+69	+104	+1.9	+23.4	+31	+1.6	+1.6	+75	+5.6	+3.0	+132

- Leading off the Hereford fall bull calf splits is this homozygous polled calving-ease son of Devout 20183. 4563 combines impressive phenotype with an outstanding numerical profile to make him a herd sire candidate for registered and commercial programs alike, regardless of their goals.
- Ranks in the top 1% for Udder and Teat; top 2% for SC; top 8% for SCF and \$BII; top 9% for CED and WW; top 10% for \$BMI; top 14% for M&G and Marb; top 15% for BW; top 19% for YW.
- Birth weight 74 lbs.

Join us for dinner and music the evening of Friday, May 2nd.
Megan Owen along with her band will be entertaining. Great music, great fun!



EXR DANI 7200 ET
Dam of Lot 22



**TH 40U 719T
DANI 60Z**
Maternal grandam
of Lot 22



22 **EXR DANI 0322 ET** (DLF,HYF,IEF,MSUDF)
DOB 9/26/20 | AHA P44180597 | TATTOO 0322 | POLLED

R LEADER 6964 (SOD)
BOYD 31Z BLUEPRINT 6153 (SOD)
NJW 91H 100W RITA 31Z ET

NJW 79Z 22Z MIGHTY 49C ET (SOD)
EXR DANI 7200 ET
TH 40U 719T DANI 60Z

HYALITE ON TARGET 936 (SOD)
R MISS REVOLUTION 1009 (DOD)
NJW 73S M326 TRUST 100W ET (SOD,CHB)
REMITALL RITA 91H

NJW 67U 28M BIG MAX 22Z
BW 91H 100W RITA 79Z ET
TH 122 71I VICTOR 719T (SOD)
TH 38M 243R DANI 40U

CED	BW	WW	YW	SC	SCF	MILK	UDDR	TEAT	CW	REA	MARB	\$CHB
+6.0	+1.8	+46	+71	+0.8	+27.8	+21	+1.4	+1.5	+60	+47	-.04	+93

- Bred AI 12/23/24 to ASM 405B RED MAN 325L ET. PE 12/25/24 to 3/1/25 to /S PERFECTO 00572 ET. Checked safe.
- The dam of Lot 22 was used extensively in the ET program at Express Ranches before joining the donor herd at TRM and then selling again in the 2023 Dixieland Delight Sale. Her influence has had a profound impact on the breed by producing great daughters as well as making herd bulls for innovative breeders.
- This big outlined, high volume female traces to the legendary donor Dani 60Z and combines a progeny BW ratio of 4@99.8 with a progeny RE ratio of 1@104 from a dam that records 16@102.4 for REA.
- A full sister to Lot 22 combined with her Roughneck heifer calf to sell as an \$11,000 pair in the 2024 Dixieland Delight Sale.
- Ranks in the top 1% for SCF; top 4% for Teat and \$BMI; top 9% for Udder and \$BII.

22A **SFCC TRM MERIT 4523** (DLF,HYF,IEF,MSUDF,MDF,DBF)
DOB 9/10/24 | AHA P44619780 | TATTOO 4523 | HOM. POLLED

JW X651 TESTED 1857 ET (CHB)
JW 1857 MERIT 21134 (CHB)
JW 33Z VICTORIA 19027

BOYD 31Z BLUEPRINT 6153 (SOD)
EXR DANI 0322 ET
EXR DANI 7200 ET

EFBEEF TFL U208 TESTED X651 ET (SOD,CHB)
KCF MISS 22S A261
JDH VICTOR 719T 33Z ET (SOD,CHB)
JW 028X DOMINETTE 1417

R LEADER 6964 (SOD)
NJW 91H 100W RITA 31Z ET
NJW 79Z 22Z MIGHTY 49C ET (SOD)
TH 40U 719T DANI 60Z

CED	BW	WW	YW	SC	SCF	MILK	UDDR	TEAT	CW	REA	MARB	\$CHB
+7.9	+1.2	+68	+99	+1.3	+25.7	+32	+1.5	+1.6	+99	+77	+29	+166

- The Merit sons were the top averaging sire group in the 2024 High Cotton Bull Sale, and this sire prospect is a prime example why with his combination of individual performance and numerical quality. Homozygous polled.
- Ranks in the top 1% for Teat; top 2% for CW, \$BMI and \$BII; top 3% for SCF and Udder; top 5% for \$CHB; top 9% for REA; top 11% for WW; top 13% for M&G; top 15% for Marb; top 16% for CED; top 20% for BW; top 22% for Milk; top 23% for SC.
- Birth weight 58 lbs.

HEREFORD FALL BRED COW/BULL CALF SPLITS



/S PERFECTO 00572 ET

Sire of Lot 23A...his pasture service also sells

23 **/S LADY MANDATE 1398J**
DOB 8/30/21 | AHA P44306820 | TATTOO 1398 | POLLED

R LEADER 6964 (SOD)
/S MANDATE 66589 ET (SOD)
/S LADY DOMINO 0158X

HILLS-GALORE 44Z RESOLUTE 128D (CHB)
/S LADY RESOLUTE 9419G ET
/S LADY EFFICIENT 3074A

HYALITE ON TARGET 936 (SOD)
R MISS REVOLUTION 1009 (DOD)
SHF RIB EYE M326 R117 (SOD)
/S LADY DOMINO 652S

RST X51 REVOLUTION 4102 (CHB)
HILLS-GALORE 52R CALLI 44Z
/S EFFICIENT 0925 (CHB)
/S LADY DOMINO 652S

CED	BW	WW	YW	SC	SCF	MILK	UDDR	TEAT	CW	REA	MARB	\$CHB
+4.8	+1.7	+70	+114	+1.5	+25.4	+29	+1.3	+1.3	+73	+54	+20	+129

- Bred AI 12/23/24 to ASM 405B RED MAN 325L ET. PE 12/25/24 to 3/1/25 to /S PERFECTO 00572 ET. Checked safe.
- This red-eyed, visually impressive female traces top and bottom to the Shaw donor 652S, who is the dam of the prolific donor 0158X, dam of /S Mandate 66589 ET, the \$62,000 1/2 interest selection of ST Genetics from the 2018 Shaw Bull Sale and the sire of Lot 23.
- Dam posts progeny ratios of 2@103 for WW and 1@107 for YW.
- Ranks in the top 3% for SCF; top 4% for \$BMI and \$BII; top 7% for WW and YW; top 10% for SC; top 20% for M&G.

23A **SFCC TRM PERFECTO 4615** (DLF,HYF,IEF,MSUDF,MDF,DBF)
DOB 11/4/24 | AHA P44619871 | TATTOO 4615 | HOM. POLLED

BG LCC 11B PERFECTO 84F
/S PERFECTO 00572 ET
/S LADY LEADER 7201E ET

/S MANDATE 66589 ET (SOD)
/S LADY MANDATE 1398J
/S LADY RESOLUTE 9419G ET

LCX PERFECTO 11B ET (SOD)
BG 100W NICKY 31C (DOD)
R LEADER 6964 (SOD)
/S LADY DOMINO 0158X

R LEADER 6964 (SOD)
/S LADY DOMINO 0158X
HILLS-GALORE 44Z RESOLUTE 128D (CHB)
/S LADY EFFICIENT 3074A

CED	BW	WW	YW	SC	SCF	MILK	UDDR	TEAT	CW	REA	MARB	\$CHB
+10.7	+0.5	+71	+117	+1.7	+28.3	+42	+1.3	+1.2	+74	+46	+15	+124

- This homozygous polled son of the TRM herd sire Perfecto 00572 combines calving ease with a big-time EPD spread from BW to YW.
- Ranks in the top 1% for SCF and M&G; top 2% for Milk, \$BMI and \$BII; top 4% for SC; top 5% for YW; top 6% for CED; top 7% for WW; top 12% for BW.
- Birth weight 75 lbs.

24 **/S LADY PERFECTO 243K** (DLF,HYF,IEF,MSUDF,DBP)
DOB 1/7/22 | AHA P44335720 | TATTOO 243 | POLLED

LCX PERFECTO 11B ET (SOD)
BG LCC 11B PERFECTO 84F
BG 100W NICKY 31C (DOD)

/S JBB/AL BOOM TOWN 44608 (SOD,CHB)
/S LADY BOOM TOWN 0037H
EXR OKSANA 7134 ET

NJW 98S R117 RIBEYE 88X ET (SOD)
WLL ZOYE 3Z
NJW 73S M326 TRUST 100W ET (SOD,CHB)
BG MS DOMINO 90Z

NJW 73S W18 HOMETOWN 10Y ET (SOD,CHB)
/S LADY THOR 1271Y
R LEADER 6964 (SOD)
LOEWEN C&L 33N OKSANA 51XA40ET

CED	BW	WW	YW	SC	SCF	MILK	UDDR	TEAT	CW	REA	MARB	\$CHB
+3.3	+1.0	+63	+92	+0.4	+23.9	+37	+1.4	+1.4	+69	+75	-.03	+93

- Bred AI 12/20/24 to ASM 405B RED MAN 325L ET. PE 12/25/24 to 3/1/25 to /S PERFECTO 00572 ET. Checked safe.
- The grandam of this Perfecto daughter combines the \$60,000 R Leader 6964 with a maternal sister to Redeem, tracing to the immortal "33N," who sold as the Lot 1 feature in the Loewen Legacy Dispersal, commanding \$35,000 at 13 years of age.
- Ranks in the top 6% for SCF and Milk; top 8% for M&G; top 9% for Udder; top 10% for REA; top 12% for \$BMI; top 13% for Teat; top 16% for \$BII; top 18% for BW.

24A **SFCC TRM DEVOUT 4599** (DLF,HYF,IEF,MSUDF,MDF,DBF)
DOB 10/22/24 | AHA P44619839 | TATTOO 4599 | HOM. POLLED

JW 8716 DEVOUT 18051 (CHB)
/S DEVOUT 22097
/S LADY ENDURE 0043H ET

BG LCC 11B PERFECTO 84F
/S LADY PERFECTO 243K
/S LADY BOOM TOWN 0037H

KCF BENNETT DEVOUT 8716 ET (SOD)
JW 936 DOMINETTE 1674 ET
NJW 79Z Z311 ENDURE 1730 ET (SOD,CHB)
/S LADY LEADER 7201E ET

LCX PERFECTO 11B ET (SOD)
BG 100W NICKY 31C (DOD)
/S JBB/AL BOOM TOWN 44608 (SOD,CHB)
EXR OKSANA 7134 ET

CED	BW	WW	YW	SC	SCF	MILK	UDDR	TEAT	CW	REA	MARB	\$CHB
+2.4	+3.3	+62	+88	+0.6	+24.4	+33	+1.4	+1.5	+62	+68	+0.6	+83

- A homozygous polled son of the powerful TRM herd sire Devout 22097.
- Ranks in the top 4% for Teat; top 5% for SCF; top 9% for Udder; top 15% for \$BMI; top 17% for REA and \$BII; top 20% for Milk and M&G.
- Birth weight 77 lbs.

The Hereford cows with spring calves at side sell pasture exposed to ASM 405B RED MAN 325L from 4/1/25 until sale day. The spring calves are registered, and DNA has been submitted. Several of the calves have GE-EPDs printed in the catalog; others will be available before sale day.



25 /S LADY MANDATE 061H (DLF,HYF,IEF,MSUDF,MDC)
DOB 1/7/20 | AHA P44135837 | TATTOO 061 | POLLED

R LEADER 6964 (SOD)													\$BMI
/S MANDATE 66589 ET (SOD)													+419
/S LADY DOMINO 0158X													\$BII
LJS MARK DOMINO 1321 (SOD,CHB)													+521
/S LADY MARK DOMINO 847F													\$CHB
/S LADY WONDER 6193D ET													+137
CED	BW	WW	YW	SC	SCF	MILK	UDDR	TEAT	CW	REA	MARB	\$CHB	
+8.2	+0.2	+70	+109	+1.7	+19.7	+42	+1.4	+1.3	+76	+54	+31	+137	

- This lead lot in the Hereford spring pair division, and in the 652S cow family selling as Lots 25–28, is a big-numbered, red-eyed, visually impressive female that traces twice to the Shaw donor 652S. 652S is the dam of the prolific donor 0158X, the dam of /S Mandate 66589 ET, who was the \$62,000 1/2 interest top-selling selection of ST Genetics from the 2018 Shaw Bull Sale and the sire of Lot 25.
- Dam posts progeny ratios of 2@94 for BW, 2@111 for WW and 2@104 for YW.
- Ranks in the top 1% for Milk and M&G; top 4% for SC; top 8% for WW; top 9% for Udder; top 10% for BW; top 11% for YW; top 13% for Marb; top 15% for CED; top 18% for \$BII; top 24% for \$CHB; top 25% for \$BMI.

25a SFCC TRM LADY RED MAN 5047 (DLF,HYF,IEF,MSUDF,MDF,DBF)
DOB 2/25/25 | AHA P44640685 | TATTOO 5047 | HOM. POLLED

NJW 79Z Z311 ENDURE 173D ET (SOD,CHB)													\$BMI
ASM 405B RED MAN 325L ET													+477
ASM 705 10Y MISS MALLORY 405B													\$BII
/S MANDATE 66589 ET (SOD)													+584
/S LADY MANDATE 061H													\$CHB
/S LADY MARK DOMINO 847F													+164
CED	BW	WW	YW	SC	SCF	MILK	UDDR	TEAT	CW	REA	MARB	\$CHB	
+6.7	+1.8	+71	+115	+1.0	+22.4	+37	+1.3	+1.4	+89	+67	+36	+164	

- Homozygous polled.
- Ranks in the top 3% for M&G; top 5% for Milk; top 6% for WW, \$BII, \$CHB and YW; top 7% for \$BMI; top 8% for CW; top 9% for Marb; top 12% for SCF; top 13% for Teat; top 18% for REA; top 23% for CED.



/S MANDATE 66589 ET
From the same cow family as
Lots 25–28 and also the sire of
Lot 25

Spring cow/calf pairs

HEREFORD SPRING COW/CALF PAIRS | 652S FAMILY



"652S"
cow family



**/S LADY
DOMINO 0158X**
Dam of Lots 26
and 27; mater-
nal granddam
of Lot 28



**/S LADY
DOMINO 652S**
Lots 25-28
descend from
this top donor
dam

26 **/S LADY ENDURE 098H ET** (DLF,HYF,IEF,MSUDF)
DOB 1/14/20 | AHA 44164373 | TATTOO 098 | HORNED

KCF BENNETT ENCORE Z311 ET (SOD,CHB)
NJW 79Z Z311 ENDURE 173D ET (SOD,CHB)
BW 91H 100W RITA 79Z ET

SHF RIB EYE M326 R117 (SOD)
/S LADY DOMINO 0158X
/S LADY DOMINO 652S

CED	BW	WW	YW	SC	SCF	MILK	UDDR	TEAT	CW	REA	MARB	\$BBI	\$CHB
+9.9	+0.5	+56	+88	+1.6	+23.7	+36	+1.2	+1.2	+88	+73	+24	+581	+160

- Lot 26 is the first of two flush sisters sired by Endure and out of the prolific donor 0158X, who is also the dam of /S Mandate 66589 ET, the \$62,000 1/2 interest top-selling selection of ST Genetics from the 2018 Shaw Bull Sale and a maternal brother to Lots 26 and 27.
- A maternal sister to Lots 26 and 27, /S Lady York 782E ET, was our \$33,500 selection from the 2019 Shaw Female Sale, where a flush on her dam sold for \$11,500. After her time as a prolific donor at TRM, 782E again sold in the 2022 Dixieland Delight for \$12,000.
- Dam posts progeny ratios of 12@97 for BW, 12@107 for WW and 12@102 for YW.
- Both 098H and her flush sister selling as Lot 27 have big-numbered, homozygous polled calves at side by the renowned TRM and Waggoner sire Merit.
- Ranks in the top 5% for \$BBI; top 6% for \$BII; top 7% for SC, SCF and \$CHB; top 8% for CED and Milk; top 9% for CW; top 12% for BW and REA; top 18% for M&G; top 22% for Marb.

27 **/S LADY ENDURE 0031H ET** (DLF,HYF,IEF,MSUDF)
DOB 1/19/20 | AHA 44164372 | TATTOO 0031 | HORNED

KCF BENNETT ENCORE Z311 ET (SOD,CHB)
NJW 79Z Z311 ENDURE 173D ET (SOD,CHB)
BW 91H 100W RITA 79Z ET

SHF RIB EYE M326 R117 (SOD)
/S LADY DOMINO 0158X
/S LADY DOMINO 652S

CED	BW	WW	YW	SC	SCF	MILK	UDDR	TEAT	CW	REA	MARB	\$BBI	\$CHB
+10.7	+0.6	+67	+99	+1.7	+20.4	+35	+1.3	+1.3	+99	+91	+37	+565	+181

- Like her flush sister that precedes her in this lineup, Lot 27 combines Endure with the prolific donor 0158X, the dam of /S Mandate 66589 ET, the \$62,000 1/2 interest top-selling selection of ST Genetics from the 2018 Shaw Bull Sale and a maternal brother to Lots 26 and 27.
- A maternal sister to Lots 26 and 27, /S Lady York 782E ET, was our \$33,500 selection from the 2019 Shaw Female Sale, where a flush on her dam sold for \$11,500. After her time as a prolific donor at TRM, 782E again sold in the 2022 Dixieland Delight for \$12,000.
- Dam posts progeny ratios of 12@97 for BW, 12@107 for WW and 12@102 for YW.
- Flush sister sells as Lot 26, and both have big-numbered, homozygous polled calves at side by the TRM and Waggoner sire Merit.
- Ranks in the top 2% for CW and \$CHB; top 3% for REA; top 4% for SC; top 6% for CED; top 8% for M&G, Marb and \$BII; top 10% for Milk and \$BBI; top 13% for BW; top 14% for WW; top 23% for SCF.

26A **SFCC TRM MERIT 5038** (DLF,HYF,IEF,MSUDF,MDF,DBF)
DOB 2/23/25 | AHA P44640675 | TATTOO 5038 | HOM. POLLED

JW X651 TESTED 1857 ET (CHB)
JW 1857 MERIT 21134 (CHB)
JW 33Z VICTORIA 19027

NJW 79Z Z311 ENDURE 173D ET (SOD,CHB)
/S LADY ENDURE 098H ET
/S LADY DOMINO 0158X

CED	BW	WW	YW	SC	SCF	MILK	UDDR	TEAT	CW	REA	MARB	\$BBI	\$CHB
+5.8	+2.5	+79	+123	+1.6	+18.9	+36	+1.3	+1.3	+100	+82	+42	+191	

- Homozygous polled.
- Ranks in the top 1% for WW and \$CHB; top 2% for M&G, CW and YW; top 6% for REA and Marb; top 7% for SC; top 8% for \$BII; top 9% for Milk; top 13% for \$BBI.

27A **SFCC TRM MERIT 5044** (DLF,HYF,IEF,MSUDF,MDF,DBF)
DOB 2/24/25 | AHA P44640707 | TATTOO 5044 | HOM. POLLED

JW X651 TESTED 1857 ET (CHB)
JW 1857 MERIT 21134 (CHB)
JW 33Z VICTORIA 19027

NJW 79Z Z311 ENDURE 173D ET (SOD,CHB)
/S LADY ENDURE 0031H ET
/S LADY DOMINO 0158X

CED	BW	WW	YW	SC	SCF	MILK	UDDR	TEAT	CW	REA	MARB	\$BBI	\$CHB
+4.3	+3.7	+92	+141	+2.2	+15.0	+39	+1.2	+1.1	+113	+98	+39	+206	

- Homozygous polled.
- Ranks in the top 1% for WW, SC, M&G, CW, \$CHB and YW; top 2% for REA; top 4% for Milk; top 7% for Marb; top 15% for \$BII.



“652S”
cow family



NJW 79Z Z311 ENDURE 173D ET
Sire of Lots 28–30

28
cow
/S LADY ENDURE 0027H ET (DLF,HYF,IEF,MSUDF)
DOB 1/18/20 | AHA 44164383 | TATTOO 0027 | HORNED

KCF BENNETT ENCORE Z311 ET (SOD,CHB)
NJW 79Z Z311 ENDURE 173D ET (SOD,CHB)
BW 91H 100W RITA 79Z ET

R LEADER 6964 (SOD)
/S LADY LEADER 7201E ET
CEEPD
/S LADY DOMINO 0158X

SCHU-LAR ON TARGET 22S (SOD,CHB)
KCF MISS REVOLUTION X338 ET
NJW 73S M326 TRUST 100W ET (SOD,CHB)
REMITALL RITA 91H
HYALITE ON TARGET 936 (SOD)
R MISS REVOLUTION 1009 (DOD)
SHF RIB EYE M326 R117 (SOD)
/S LADY DOMINO 652S

\$BMI
+509
\$BII
+604

CED	BW	WW	YW	SC	SCF	MILK	UDDR	TEAT	CW	REA	MARB	\$CHB
+13.8	0.0	+55	+89	+1.6	+25.7	+30	+1.2	+1.2	+79	+61	+35	+149

- Lot 28 is a full sister to the \$100,000-valued /S Lady Endure 0043H ET, who was the \$50,000 1/2 interest selection of Salt Log Branch from the 2022 Dixieland Delight and had a flush sell for \$7,250. A daughter also sold to Medonte Highlands for \$15,000, and embryos by Distinct sold for \$1,000 per egg in the 2024 Dixieland Delight Sale.
- A flush brother to Lot 28, /S Arsenal 00161 ET, was the \$31,000 2/3 interest high-selling bull in the 2021 Shaw Cattle Co. Bull Sale.
- The dam of Lot 28, /S Lady Leader 7201 ET, is a prolific donor at Shaw Cattle Co. and a full sister to /S Mandate 66589 ET, who was the \$62,000 1/2 interest top-selling selection of ST Genetics from the 2018 Shaw Bull Sale.
- Ranks in the top 2% for CED; top 3% for SCF and \$BMI; top 4% for \$BII; top 7% for SC; top 8% for BW; top 10% for Marb; top 13% for \$CHB; top 25% for REA.

28a
bull
SFCC TRM MANDATORY 5112
DOB 3/19/25 | AHA P44646469 | TATTOO 5112 | POLLED

/S TRM MANDATORY 88573 ET
SFCC TRM MANDATORY 2240
SFCC TRM LADY ENDURE 0244 ET

NJW 79Z Z311 ENDURE 173D ET (SOD,CHB)
/S LADY ENDURE 0027H ET
/S LADY LEADER 7201E ET

/S MANDATE 66589 ET (SOD)
/S LADY VICTOR 5139C ET
NJW 79Z Z311 ENDURE 173D ET (SOD,CHB)
/S LADY PEERLESS 4007B

KCF BENNETT ENCORE Z311 ET (SOD,CHB)
BW 91H 100W RITA 79Z ET
R LEADER 6964 (SOD)
/S LADY DOMINO 0158X

\$BMI
+523
\$BII
+614

CED	BW	WW	YW	SC	SCF	MILK	UDDR	TEAT	CW	REA	MARB	\$CHB
+9.4	+1.7	+64	+101	+1.3	+26.4	+32	+1.3	+1.3	+90	+72	+19	+146

- Ranks in the top 2% for SCF and \$BMI; top 3% for \$BII; top 7% for CW; top 10% for CED; top 13% for REA; top 15% for \$CHB; top 19% for M&G; top 23% for WW, SC and Milk.



SFCC TRM MANDATORY 2240
Sire of Lot 28A



/S LADY LEADER 7201E ET
Dam of Lot 28 and maternal sister to Lots 26 and 27



/S LADY ENDURE 0043H ET
\$100,000-valued full sister to Lot 28



/S ARSENAL 00161 ET
Full brother to Lot 28...a daughter sells as Lot 50

HEREFORD SPRING COW/CALF PAIRS



/S LADY ENDURE 0009H ET
\$18,000 full sister to Lot 29



/S LADY ON TARGET 5002C ET
Dam of Lot 29

29 cow /S LADY ENDURE 078H ET (DLF,HYF,IEF,MSUDF)

DOB 1/12/20 | AHA 44164396 | TATTOO 078 | HORNED
KCF BENNETT ENCORE Z311 ET (SOD,CHB)
NJW 79Z Z311 ENDURE 173D ET (SOD,CHB)
BW 91H 100W RITA 79Z ET

HYALITE ON TARGET 936 (SOD)												
/S LADY ON TARGET 5002C ET												
/S LADY DOMINO 9144W												
CED	BW	WW	YW	SC	SCF	MILK	UDDR	TEAT	CW	REA	MARB	\$CHB
+3.6	+4.2	+79	+129	+2.0	+19.0	+36	+1.3	+1.2	+116	+1.08	+36	+201

- Lot 29 is a flush sister to the \$18,000 lead lot in the four-year-old spring pair division of the 2024 Dixieland Delight Sale, selected by Medonte Highlands, and a direct daughter of one of the most popular donor females in the Shaw herd, 5002C, a direct daughter of 9144W, the \$20,000 selection of Sierra Ranch as the Lot 1 feature from the 2014 Shaw Female Sale.
- Lot 29 stems from one of the most prolific cow families in the Shaw herd that produced Lots 1-3 in the 2015 Shaw Female Sale as well as seven donor cows, including 9144, 1010, 12A, 7291, 742, 821H and 823H, and has placed herd bulls in reputation programs such as K&B, Carmichael, Sonoma Mountain Herefords, Van Newkirk, Udy Cattle, Lee Livestock and Genex.
- This female raised a set of twins last year and still managed to shorten her calving interval.
- Records 3@108.3 for WW ratio.
- Ranks in the top 1% for WW, SC, CW, REA, \$CHB and YW; top 2% for M&G; top 7% for \$BII; top 8% for Milk; top 9% for Marb; top 10% for \$BMI.

29A cow SFCC TRM LADY MERIT 5062 (DLF,HYF,IEF,MSUDF,MDF)

DOB 3/2/25 | AHA P44644849 | TATTOO 5062 | POLLED
JW X651 TESTED 1857 ET (CHB)
JW 1857 MERIT 21134 (CHB)
JW 33Z VICTORIA 19027

NJW 79Z Z311 ENDURE 173D ET (SOD,CHB)												
/S LADY ENDURE 078H ET												
/S LADY ON TARGET 5002C ET												
CED	BW	WW	YW	SC	SCF	MILK	UDDR	TEAT	CW	REA	MARB	\$CHB
+8.5	+1.7	+83	+131	+1.8	+20.3	+35	+1.4	+1.3	+108	+8.8	+50	+199

- Ranks in the top 1% for WW, M&G, CW, \$CHB and YW; top 3% for SC and Marb; top 4% for REA and \$BII; top 7% for \$BMI; top 9% for Udder; top 11% for Milk; top 13% for CED; top 24% for SCF.

30 cow /S LADY ENDURE 0049H (DLF,HYF,IEF,MSUDF,MDF)

DOB 1/25/20 | AHA P44171326 | TATTOO 0049 | POLLED
KCF BENNETT ENCORE Z311 ET (SOD,CHB)
NJW 79Z Z311 ENDURE 173D ET (SOD,CHB)
BW 91H 100W RITA 79Z ET

NJW 73S W18 HOMEGROWN 8Y ET (SOD)												
/S LADY HOMEGROWN 737E ET (DOD)												
/S LADY DOMINO 424P (DOD)												
CED	BW	WW	YW	SC	SCF	MILK	UDDR	TEAT	CW	REA	MARB	\$CHB
+6.2	+4.4	+59	+89	+1.4	+24.6	+35	+1.3	+1.3	+107	+8.6	+16	+168

- This Endure daughter traces to the prolific Shaw donor /S Lady Domino 424P.
- Posts progeny ratios of 4@99 for BW and 1@106 for WW.
- Dam posts progeny ratios of 3@110 for WW and 3@103 for YW.
- Dam and grandam are both AHA Dams of Distinction.
- Ranks in the top 1% for CW; top 2% for \$BMI; top 4% for \$BII and \$CHB; top 5% for SCF and REA; top 10% for Milk; top 15% for SC; top 18% for M&G.

30A bull SFCC TRM MERIT 5009 (DLF,HYF,IEF,MSUDF,MDF,DBF)

DOB 2/17/25 | AHA P44640653 | TATTOO 5009 | HOM. POLLED
JW X651 TESTED 1857 ET (CHB)
JW 1857 MERIT 21134 (CHB)
JW 33Z VICTORIA 19027

NJW 79Z Z311 ENDURE 173D ET (SOD,CHB)												
/S LADY ENDURE 0049H												
/S LADY HOMEGROWN 737E ET (DOD)												
CED	BW	WW	YW	SC	SCF	MILK	UDDR	TEAT	CW	REA	MARB	\$CHB
+7.2	+2.2	+78	+121	+2.1	+21.4	+37	+1.4	+1.4	+118	+7.9	+43	+208

- Homozygous polled.
- Ranks in the top 1% for WW, SC, CW and \$CHB; top 2% for M&G; top 3% for \$BII and YW; top 4% for \$BMI; top 5% for Marb; top 6% for Milk; top 8% for REA; top 9% for Udder; top 13% for Teat; top 17% for SCF; top 20% for CED.



31 /S LADY MANDATE 0099H (DLF,HYF,IEF,MSUDF,DBP)
DOB 2/5/20 | AHA 44141966 | TATTOO 0099 | HORNED

R LEADER 6964 (SOD)
/S MANDATE 66589 ET (SOD)
/S LADY DOMINO 0158X

LOEWEN FOUNDATION 34X (SOD)
C&L MISS VICKY 34X 18Z
HVH C&L VICTORIA P606 50P

HYALITE ON TARGET 936 (SOD)
R MISS REVOLUTION 1009 (DOD)
SHF RIB EYE M326 R117 (SOD)
/S LADY DOMINO 652S
PCR 286 MR ADVISOR 502R (SOD,CHB)
LOEWEN R125 MISS 53T
PW VICTOR BOOMER P606 (SOD)
KFF 57X NOEL J140

CED	BW	WW	YW	SC	SCF	MILK	UDDR	TEAT	CW	REA	MARB	\$BBI	\$BBI	\$CHB
+0.3	+2.2	+62	+102	+1.2	+28.3	+16	+1.4	+1.4	+60	+22	+32	+616		+113

- Lot 31 is the first of two paternal sisters by Mandate with Red Man calves at side.
- The dam of this deep-ribbed, nice uddered Mandate daughter is a maternal sister to the popular sire C&L Loewen Stimulus M326 9W.
- Dam posts progeny ratios of 9@103 for YW, 11@101 for RE and 11@117 for IMF.
- Ranks in the top 1% for SCF; top 3% for \$BBI and \$BII; top 9% for Udder; top 12% for Marb; top 13% for Teat; top 24% for YW.



32 /S LADY MANDATE 0096H (DLF,HYF,IEF,MSUDF)
DOB 2/5/20 | AHA 44141958 | TATTOO 0096 | HORNED

R LEADER 6964 (SOD)
/S MANDATE 66589 ET (SOD)
/S LADY DOMINO 0158X

ILR HOMEGROWN 458B ET
GMC HOMEGROWN LADY 728
/S LADY DOMINO 2013Z

HYALITE ON TARGET 936 (SOD)
R MISS REVOLUTION 1009 (DOD)
SHF RIB EYE M326 R117 (SOD)
/S LADY DOMINO 652S
NJW 73S W18 HOMEGROWN 8Y ET (SOD)
CHURCHILL LADY 1162Y ET
GB L1 DOMINO 175E (SOD)
TS LADY ADVANCE 91

CED	BW	WW	YW	SC	SCF	MILK	UDDR	TEAT	CW	REA	MARB	\$BBI	\$BBI	\$CHB
+6.6	+1.5	+70	+114	+1.5	+23.4	+35	+1.3	+1.3	+77	+44	+19	+567		+132

- An impressive numerical profile accompanies the outstanding phenotype of this long bodied, extra feminine Mandate daughter.
- Dam is a big bodied daughter of Homegrown 458B that was originally Shaw's selection from Six Mile Creek Ranch and is a direct daughter of a female Mark Rubes selected from Shaw in a past production sale, 2013Z.
- Records progeny ratios of 4@107 for WW and 4@106 for YW.
- Ranks in the top 6% for M&G and YW; top 7% for WW; top 8% for SCF and \$BII; top 9% for \$BBI; top 10% for SC; top 12% for Milk; top 24% for CED; top 25% for BW.

31A SFCC TRM LADY RED MAN 5030 (DLF,HYF,IEF,MSUDF,MDF,DBF)
DOB 2/21/25 | AHA P44640719 | TATTOO 5030 | HOM. POLLED

NJW 79Z 2311 ENDURE 173D ET (SOD,CHB)
ASM 405B RED MAN 325L ET
ASM 705 10Y MISS MALLORY 405B

KCF BENNETT ENCORE Z311 ET (SOD,CHB)
BW 91H 100W RITA 79Z ET
NJW 73S W18 HOMETOWN 10Y ET (SOD,CHB)
ASM 122L MISS 705ET

/S MANDATE 66589 ET (SOD)
/S LADY MANDATE 0099H
C&L MISS VICKY 34X 18Z

R LEADER 6964 (SOD)
/S LADY DOMINO 0158X
LOEWEN FOUNDATION 34X (SOD)
HVH C&L VICTORIA P606 50P

CED	BW	WW	YW	SC	SCF	MILK	UDDR	TEAT	CW	REA	MARB	\$BBI	\$BBI	\$CHB
+3.5	+2.4	+66	+111	+0.8	+29.0	+24	+1.4	+1.4	+85	+65	+33	+667		+156

- Homozygous polled.
- Ranks in the top 1% for SCF, \$BBI and \$BII; top 9% for Udder, \$CHB and YW; top 11% for Marb; top 13% for Teat and CW; top 17% for WW; top 20% for REA.

32A SFCC TRM LADY RED MAN 5057 (DLF,HYF,IEF,MSUDF,MDF,DBF)
DOB 2/28/25 | AHA P44640701 | TATTOO 5057 | POLLED

NJW 79Z 2311 ENDURE 173D ET (SOD,CHB)
ASM 405B RED MAN 325L ET
ASM 705 10Y MISS MALLORY 405B

KCF BENNETT ENCORE Z311 ET (SOD,CHB)
BW 91H 100W RITA 79Z ET
NJW 73S W18 HOMETOWN 10Y ET (SOD,CHB)
ASM 122L MISS 705ET

/S MANDATE 66589 ET (SOD)
/S LADY MANDATE 0096H
GMC HOMEGROWN LADY 728

R LEADER 6964 (SOD)
/S LADY DOMINO 0158X
ILR HOMEGROWN 458B ET
/S LADY DOMINO 2013Z

CED	BW	WW	YW	SC	SCF	MILK	UDDR	TEAT	CW	REA	MARB	\$BBI	\$BBI	\$CHB
+6.6	+2.1	+70	+111	+1.0	+26.0	+39	+1.4	+1.4	+97	+89	+12	+619		+152

- Ranks in the top 2% for \$BBI; top 3% for SCF and M&G, CW and \$BII; top 4% for Milk and REA; top 8% for WW; top 9% for Udder and YW; top 11% for \$CHB; top 13% for Teat; top 24% for CED.



ASM 405B RED MAN 325L ET

*Sire of nine of the spring calves selling.
The Hereford cows with spring calves
at side sell pasture exposed to Red Man
from April 1 until sale day.*

HEREFORD SPRING COW/CALF PAIRS



33 /S LADY MANDATE 0028H ET (DLF,HYF,IEF,MSUDF,MDF)

DOB 1/19/20 | AHA 44139870 | TATTOO 0028 | HORNE
R LEADER 6964 (SOD)
/S MANDATE 66589 ET (SOD)
/S LADY DOMINO 0158X

NJW 73S W18 HOMETOWN 10Y ET (SOD,CHB)
/S LADY HOMETOWN 779E ET
/S LADY ADVANCE 729IT

CED	BW	WW	YW	SC	SCF	MILK	UDDR	TEAT	CW	REA	MARB	\$BBI	\$CHB
-0.1	+3.8	+66	+108	+1.5	+23.2	+20	+1.3	+1.3	+80	+5.3	+1.1	+120	

- Lot 33 stems from one of the most prolific cow families in the Shaw herd that produced Lots 1-3 in the 2015 Shaw Female Sale as well as seven donor cows, including the grandam of Lot 33, 7291, and has placed herd bulls in reputation programs such as K&B, Carmichael, Sonoma Mountain Herefords, Van Newkirk, Udy Cattle, Lee Livestock and Genex.
- Dam posts progeny ratios of 5@98 for BW, 5@109 for WW, 4@109 for YW and 8@114 for IMF.
- Third dam is an AHA Dam of Distinction.
- Ranks in the top 9% for SCF; top 10% for SC; top 11% for \$BBI; top 12% for \$BII; top 13% for YW; top 17% for WW; top 24% for CW.

33A SFCC TRM LADY MERIT 5116 (DLF,HYF,IEF,MSUDF,MDF,DBF)

DOB 3/20/25 | AHA P44646411 | TATTOO 5116 | POLLED
JW X651 TESTED 1857 ET (CHB)
JW 1857 MERIT 21134 (CHB)
JW 332 VICTORIA 19027

/S MANDATE 66589 ET (SOD)
/S LADY MANDATE 0028H ET
/S LADY HOMETOWN 779E ET

CED	BW	WW	YW	SC	SCF	MILK	UDDR	TEAT	CW	REA	MARB	\$BBI	\$CHB
+2.9	+3.3	+81	+128	+1.6	+22.4	+27	+1.4	+1.4	+95	+6.4	+4.5	+172	

- Ranks in the top 1% for WW and YW; top 4% for CW, \$BBI and \$CHB; top 5% for Marb; top 6% for \$BII; top 7% for SC; top 9% for Udder; top 10% for M&G; top 12% for SCF; top 13% for Teat; top 21% for REA.

34 /S LADY MANDATE 051H (DLF,HYF,IEF,MSUDF,MDC)

DOB 1/7/20 | AHA P44135821 | TATTOO 051 | POLLED
R LEADER 6964 (SOD)
/S MANDATE 66589 ET (SOD)
/S LADY DOMINO 0158X

/S INTEGRITY 55498 ET
/S LADY INTEGRITY 8189F ET
/S LADY HARLAND 7053T (DOD)

CED	BW	WW	YW	SC	SCF	MILK	UDDR	TEAT	CW	REA	MARB	\$BBI	\$CHB
+7.7	+0.1	+64	+97	+1.0	+28.9	+31	+1.3	+1.4	+66	+2.4	+2.0	+112	

- This balanced trait Mandate daughter traces to the prolific Shaw donor /S Lady Mom 4007P.
- Dam posts progeny ratios of 2@92 for BW and 2@101 for YW.
- Grandam is an AHA Dam of Distinction.
- Ranks in the top 1% for SCF; top 2% for \$BBI and \$BII; top 9% for BW; top 13% for Teat; top 17% for CED; top 22% for WW; top 23% for M&G.

34A SFCC TRM MERIT 5085 (DLF,HYF,IEF,MSUDF,MDF,DBF)

DOB 3/12/25 | AHA P44644872 | TATTOO 5085 | POLLED
JW X651 TESTED 1857 ET (CHB)
JW 1857 MERIT 21134 (CHB)
JW 332 VICTORIA 19027

/S MANDATE 66589 ET (SOD)
/S LADY MANDATE 051H
/S LADY INTEGRITY 8189F ET

CED	BW	WW	YW	SC	SCF	MILK	UDDR	TEAT	CW	REA	MARB	\$BBI	\$CHB
+10.0	0.0	+77	+117	+1.3	+25.3	+32	+1.4	+1.4	+90	+5.5	+4.3	+164	

- Ranks in the top 2% for WW and \$BII; top 3% for \$BBI; top 4% for SCF; top 5% for M&G, Marb and YW; top 6% for \$CHB; top 8% for CED, BW and CW; top 9% for Udder; top 13% for Teat; top 22% for Milk; top 23% for SC.

35 /S LADY MANDATE 005H (DLF,HYF,IEF,MSUDF,MDC)

DOB 1/4/20 | AHA P44133338 | TATTOO 005 | POLLED
R LEADER 6964 (SOD)
/S MANDATE 66589 ET (SOD)
/S LADY DOMINO 0158X

/S INTEGRITY 55498 ET
/S LADY INTEGRITY 832F
/S LADY DOMINO 2107Z (DOD)

CED	BW	WW	YW	SC	SCF	MILK	UDDR	TEAT	CW	REA	MARB	\$BBI	\$CHB
+10.1	-0.8	+57	+89	+1.1	+31.3	+25	+1.6	+1.7	+67	+3.1	+3.1	+129	

- A definite candidate to cultivate calving-ease genetics in any herd, this Mandate daughter records 2@93 for BW from a dam that posts progeny ratios of 1@99 for BW, 1@103 for WW and 1@102 for YW.
- Grandam is an AHA Dam of Distinction.
- Ranks in the top 1% for SCF, Udder, Teat, \$BBI and \$BII; top 5% for BW; top 8% for CED; top 13% for Marb.

35A SFCC TRM MERIT 5058 (DLF,HYF,IEF,MSUDF,MDC,DBF)

DOB 2/28/25 | AHA P44640702 | TATTOO 5058 | POLLED
JW X651 TESTED 1857 ET (CHB)
JW 1857 MERIT 21134 (CHB)
JW 332 VICTORIA 19027

/S MANDATE 66589 ET (SOD)
/S LADY MANDATE 005H
/S LADY INTEGRITY 832F

CED	BW	WW	YW	SC	SCF	MILK	UDDR	TEAT	CW	REA	MARB	\$BBI	\$CHB
+7.7	+1.1	+74	+118	+0.9	+21.5	+27	+1.4	+1.5	+97	+6.5	+4.7	+185	

- Ranks in the top 2% for \$CHB; top 3% for CW; top 4% for WW, Teat, Marb and YW; top 5% for \$BII; top 7% for \$BBI; top 9% for Udder; top 16% for SCF; top 17% for CED; top 19% for BW and M&G; top 20% for REA.

36 /S LADY MANDATE 0159H (DLF,HYF,IEF,MSUDF)

DOB 2/23/20 | AHA 44153017 | TATTOO 0159 | HORNE
R LEADER 6964 (SOD)
/S MANDATE 66589 ET (SOD)
/S LADY DOMINO 0158X

UPS DOMINO 3027 (SOD,CHB)
/S LADY DOMINO 2049Z
/S LADY DOMINO 424P (DOD)

CED	BW	WW	YW	SC	SCF	MILK	UDDR	TEAT	CW	REA	MARB	\$BBI	\$CHB
+7.4	+0.6	+60	+90	+1.2	+29.3	+34	+1.2	+1.2	+65	+4.5	+3.3	+127	

- Lot 36 is a rock star for Sustained Cow Fertility EPD, indicating she will be a prolific producer for many years.
- Grandam is the prolific Shaw donor /S Lady Domino 424P, who is an AHA Dam of Distinction.
- Ranks in the top 1% for SCF, \$BBI and \$BII; top 11% for Marb; top 13% for BW and Milk; top 18% for M&G; top 19% for CED.

36A SFCC TRM MERIT 5020 (DLF,HYF,IEF,MSUDF,MDF,DBF)

DOB 2/20/25 | AHA P44640664 | TATTOO 5020 | POLLED
JW X651 TESTED 1857 ET (CHB)
JW 1857 MERIT 21134 (CHB)
JW 332 VICTORIA 19027

/S MANDATE 66589 ET (SOD)
/S LADY MANDATE 0159H
/S LADY DOMINO 2049Z

CED	BW	WW	YW	SC	SCF	MILK	UDDR	TEAT	CW	REA	MARB	\$BBI	\$CHB
+6.7	+0.8	+78	+120	+1.7	+27.0	+37	+1.3	+1.3	+94	+5.7	+5.9	+189	

- Ranks in the top 1% for \$BBI, \$BII and \$CHB; top 2% for WW, SCF, M&G and Marb; top 3% for YW; top 4% for SC; top 5% for CW; top 6% for Milk; top 15% for BW; top 23% for CED.

37 /S LADY MANDATE 0062H (DLF,HYF,IEF,MSUDF)

DOB 1/28/20 | AHA P44141722 | TATTOO 0062 | POLLED

R LEADER 6964 (SOD)													HYALITE ON TARGET 936 (SOD)	
/S MANDATE 66589 ET (SOD)													R MISS REVOLUTION 1009 (DOD)	
/S LADY DOMINO 0158X													SHF RIB EYE M326 R117 (SOD)	
													/S LADY DOMINO 652S	
/S JBB/AL BOOM TOWN 44608 (SOD,CHB)													NJW 73S W18 HOMETOWN 10Y ET (SOD,CHB)	\$BMI
/S LADY BOOM TOWN 8210F ET													/S LADY THOR 1271Y	+442
/S LADY DOMINO 1032Y (DOD)													CL 1 DOMINO 477P (SOD)	\$BII
													/S LADY LOGIC 7077T	+539
CED	BW	WW	YW	SC	SCF	MILK	UDDR	TEAT	CW	REA	MARB	\$CHB		
+6.0	+0.4	+55	+85	+1.2	+22.1	+25	+1.4	+1.4	+61	+30	+43	+132		

- Will calve before sale day to JW 1857 MERIT 21134.
- A high marbling option to create bulls suitable for heifer service, posting an average progeny BW ratio of 2@96 from a dam who posts progeny ratios of 2@87 for BW and 2@100 for WW.
- Grandam is an AHA Dam of Distinction.
- Ranks in the top 5% for Marb; top 9% for Udder; top 11% for BW; top 13% for SCF, Teat and \$BII; top 16% for \$BMI.

38 /S LADY MANDATE 052H (DLF,HYF,IEF,MSUDF)

DOB 1/7/20 | AHA P44135823 | TATTOO 052 | POLLED

R LEADER 6964 (SOD)													HYALITE ON TARGET 936 (SOD)	
/S MANDATE 66589 ET (SOD)													R MISS REVOLUTION 1009 (DOD)	
/S LADY DOMINO 0158X													SHF RIB EYE M326 R117 (SOD)	
													/S LADY DOMINO 652S	
/S JBB/AL BOOM TOWN 44608 (SOD,CHB)													NJW 73S W18 HOMETOWN 10Y ET (SOD,CHB)	\$BMI
/S LADY BOOM TOWN 8143F													/S LADY THOR 1271Y	+474
JET MS E902 (DOD)													JET MR X702	\$BII
													JET MS U703	+565
CED	BW	WW	YW	SC	SCF	MILK	UDDR	TEAT	CW	REA	MARB	\$CHB		
+6.7	-0.3	+53	+89	+1.3	+25.2	+31	+1.3	+1.4	+60	+17	+29	+116		

- Another productive Mandate daughter with calving ease and marbling to spare from the Shaw foundation female E902, who originated in the famed Turner Brothers herd in Oklahoma.
- Dam posts progeny ratios of 2@89 for BW.
- Ranks in the top 4% for SCF; top 7% for BW; top 8% for \$BMI and \$BII; top 13% for Teat; top 15% for Marb; top 23% for CED and SC.

38A SFCC TRM LADY MANDATORY 5101

DOB 3/17/25 | AHA P44644879 | TATTOO 5101 | POLLED

/S TRM MANDATORY 88573 ET													/S MANDATE 66589 ET (SOD)	
SFCC TRM MANDATORY 2240													/S LADY VICTOR 5139C ET	
SFCC TRM LADY ENDURE 0244 ET													NJW 79Z 2311 ENDURE 173D ET (SOD,CHB)	
													/S LADY PEERLESS 4007B	
/S MANDATE 66589 ET (SOD)													R LEADER 6964 (SOD)	\$BMI
/S LADY MANDATE 052H													/S LADY DOMINO 0158X	+504
/S LADY BOOM TOWN 8143F													/S JBB/AL BOOM TOWN 44608 (SOD,CHB)	\$BII
													JET MS E902 (DOD)	+595
CED	BW	WW	YW	SC	SCF	MILK	UDDR	TEAT	CW	REA	MARB	\$CHB		
+10.0	-0.6	+57	+91	+1.1	+26.1	+33	+1.4	+1.4	+78	+50	+27	+133		

- Ranks in the top 3% for SCF; top 4% for \$BMI and \$BII; top 5% for BW; top 8% for CED; top 9% for Udder; top 13% for Teat; top 18% for Marb; top 21% for Milk.

39 /S LADY MANDATE 046H ET (DLF,HYF,IEF,MSUDF)

DOB 1/12/20 | AHA 44137534 | TATTOO 046 | HORNED

R LEADER 6964 (SOD)													HYALITE ON TARGET 936 (SOD)	
/S MANDATE 66589 ET (SOD)													R MISS REVOLUTION 1009 (DOD)	
/S LADY DOMINO 0158X													SHF RIB EYE M326 R117 (SOD)	
													/S LADY DOMINO 652S	
NJW 73S W18 HOMETOWN 10Y ET (SOD,CHB)													SHF WONDER M326 W18 ET (SOD,CHB)	\$BMI
/S LADY HOMETOWN 6168D ET													NJW P606 72N DAYDREAM 73S	+466
/S LADY DOMINO 145Y													UPS DOMINO 3027 (SOD,CHB)	\$BII
													/S LADY MOM 6004S ET	+553
CED	BW	WW	YW	SC	SCF	MILK	UDDR	TEAT	CW	REA	MARB	\$CHB		
+11.3	+2.0	+58	+92	+1.2	+23.5	+25	+1.3	+1.4	+73	+30	+21	+130		

- Will calve before sale day to SFCC TRM MANDATORY 2240.
- The \$22,000-valued grandam of this Mandate daughter, 145Y, was Lot 1 in the 2015 Shaw Female Sale, selected by Michael Perez, and is a proven donor that has been an integral part of the embryo transplant programs of Perez and Shaw's.
- A maternal sister to the dam of Lot 39 was the \$15,000 selection of Messi-Hart from the 2018 Shaw Female Sale.
- Ranks in the top 5% for CED; top 8% for SCF; top 9% for \$BMI; top 10% for \$BII; top 13% for Teat.



40 /S LADY EXCITEMENT 073H ET (DLF,HYF,IEF,MSUDF)

DOB 1/12/20 | AHA 44137558 | TATTOO 073 | HORNED

R NEW YORK 5083 (CHB)													SHF YORK 19H Y02 (SOD,CHB)	
R EXCITEMENT 4356													R MISS PUCKSTER 971 (DOD)	
R MISS ON TARGET 384													HYALITE ON TARGET 936 (SOD)	
													R MISS FELT 1479	
SCHU-LAR RED BULL 18X (SOD)													R PUCKSTER 2013 (SOD)	\$BMI
/S LADY RED BULL 5228C													SCHU-LAR 24U OF 402 242	+349
/S LADY ADVANCE 7291T													HH ADVANCE 286M 1ET (SOD)	\$BII
													/S LADY MARK DOMINO 4118P (DOD)	+432
CED	BW	WW	YW	SC	SCF	MILK	UDDR	TEAT	CW	REA	MARB	\$CHB		
+1.1	+2.5	+61	+93	+1.2	+15.4	+19	+1.3	+1.2	+75	+37	+19	+129		

- John is particularly fond of the Red Man heifer calf at the side of this cow. He says this Excitement daughter can flat produce and raise one.
- Lot 33 stems from one of the most prolific cow families in the Shaw herd that produced Lots 1-3 in the 2015 Shaw Female Sale as well as seven donor cows and has placed herd bulls in several reputation programs.
- Records 2@113 for WW.

40A SFCC TRM LADY RED MAN 5018 (DLF,HYF,IEF,MSUDF,MDF,DBF)

DOB 2/20/25 | AHA P44640660 | TATTOO 5018 | HOM. POLLED

NJW 79Z 2311 ENDURE 173D ET (SOD,CHB)													KCF BENNETT ENCORE 2311 ET (SOD,CHB)	
ASM 405B RED MAN 325L ET													BW 91H 100W RITA 79Z ET	
ASM 705 10Y MISS MALLORY 405B													NJW 73S W18 HOMETOWN 10Y ET (SOD,CHB)	
													ASM 122L MISS 705ET	
R EXCITEMENT 4356													R NEW YORK 5083 (CHB)	\$BMI
/S LADY EXCITEMENT 073H ET													R MISS ON TARGET 384	+409
/S LADY RED BULL 5228C													SCHU-LAR RED BULL 18X (SOD)	\$BII
													/S LADY ADVANCE 7291T	+503
CED	BW	WW	YW	SC	SCF	MILK	UDDR	TEAT	CW	REA	MARB	\$CHB		
+3.7	+2.4	+67	+112	+1.4	+17.0	+26	+1.4	+1.3	+100	+64	+27	+172		

- Homozygous polled.
- Ranks in the top 2% for CW; top 4% for \$CHB; top 8% for YW; top 9% for Udder; top 13% for WW; top 15% for SC; top 18% for Marb; top 21% for REA; top 24% for \$BII.

The Hereford cows with spring calves at side
sell pasture exposed to **RED MAN** from 4/1/25 until sale day.
The spring calves are registered, and DNA has been submitted.
Several of the calves have GE-EPDs printed in the catalog,
indicated by this symbol: ...others will be available before sale day.
Several of the calves are tested homozygous polled.

**DIXIELAND
DELIGHT**
Red, White & Black
ANGUS & HIRSFORD PRODUCTION SALE



Lot 45

45 /S LADY 628 ADVANCE 0016H ET (DLF,HYF,IEF,MSUDF,DBP)
DOB 1/17/20 | AHA 44170985 | TATTOO 0016 | HORNED

HH ADVANCE 4075B ET
H FHF ADVANCE 628 ET (CHB)
FHF 408 RITA 21W

HH ADVANCE 1013Y ET (SOD)
HH MISS ADVANCE 0121X
CJH HARLAND 408 (SOD)
FHF 45P RITA 101T

HYALITE ON TARGET 936 (SOD)
LOEWEN MISS ON TARGET 10Y 1A
LOEWEN C&L MISS 33T 10Y ET

SCHU-LAR ON TARGET 22S (SOD,CHB)
HYALITE TS LASS 310
HH ADVANCE 8203U ET (SOD)
HVH OKSANA 4L 33N

CED	BW	WW	YW	SC	SCF	MILK	UDDR	TEAT	CW	REA	MARB	\$CHB
+2.2	+3.9	+61	+98	+1.0	+11.1	+24	+1.3	+1.3	+84	+75	+17	+136

• Lot 45 is a direct daughter of Loewen Miss On Target 10Y 1A, the selection of Shaw Cattle Co. from the Loewen dispersal. The now-deceased grandam of Lot 45, 10Y, was one of the best daughters Oksana 33N ever produced. 10Y is a full sister to Loewen Homerun, a resident herd sire for Double Seven Ranch, and possessed one of the best udders you would ever see on a Hereford female.

• Records 2@108.5 for WW ratio from a dam who records 10@104 for WW and 10@102 for YW.

• Ranks in the top 10% for REA; top 16% for CW; top 25% for \$CHB.

45A SFCC TRM MANDATORY 5100 (DLF,HYF,IEF,MSUDF,MDF,DBF)
DOB 3/17/25 | AHA P44644878 | TATTOO 5100 | POLLED

/S TRM MANDATORY 88573 ET
SFCC TRM MANDATORY 2240
SFCC TRM LADY ENDURE 0244 ET

/S MANDATE 66589 ET (SOD)
/S LADY VICTOR 5139C ET
NJW 79Z 2311 ENDURE 173D ET (SOD,CHB)
/S LADY PEERLESS 4007B

H FHF ADVANCE 628 ET (CHB)
/S LADY 628 ADVANCE 0016H ET
LOEWEN MISS ON TARGET 10Y 1A

HH ADVANCE 4075B ET
FHF 408 RITA 21W
HYALITE ON TARGET 936 (SOD)
LOEWEN C&L MISS 33T 10Y ET

CED	BW	WW	YW	SC	SCF	MILK	UDDR	TEAT	CW	REA	MARB	\$CHB
+4.5	+3.1	+65	+103	+1.0	+19.1	+29	+1.4	+1.3	+86	+68	+15	+134

• Ranks in the top 9% for Udder; top 12% for CW; top 17% for REA; top 19% for WW; top 22% for YW.



LOEWEN MISS ON TARGET 10Y 1A

Dam of Lot 45



Lot 46

46 BK GAME PLAN 962G (DLF,HYF,IEF,MSUDF,DBP)
DOB 3/3/19 | AHA P44062476 | TATTOO BUCK/962G | POLLED

HAPP EXTRA POINT 1220 ET
HAPP BK VALOR 37C ET
JSF 12N LADY VAL 9T

DELHAWK KAHUNA 1009 ET
CRANE STYLE POINTS 945
GHC BEAR 12N
HSF 60G LADY VAL 48K

SHF RIB EYE M326 R117 (SOD)
/S RRC R117 MISSY 4201
CB 44U 2U LITTLE MISSY 4Y

KCF BENNETT 3008 M326 (SOD)
HVH MISS HUDSON 83K 8M
NJW 98S DURANGO 44U (SOD)
NM MISS GYPSY BOZZ 2U

CED	BW	WW	YW	SC	SCF	MILK	UDDR	TEAT	CW	REA	MARB	\$CHB
-3.9	+3.7	+56	+89	+1.4	+15.7	+24	+1.3	+1.3	+67	+61	+18	+123

• This Valor daughter is sure to be among the phenotypic favorites in this offering. 962G blends power and femininity with a solid numerical profile.

• Dam posts progeny ratios of 2@103 for WW and 1@104 for YW.

• Ranks in the top 15% for SC; top 25% for REA.

46A SFCC TRM MANDATORY 5102 (DLF,HYF,IEF,MSUDF,MDF,DBF)
DOB 3/17/25 | AHA P44644880 | TATTOO 5102 | POLLED

/S TRM MANDATORY 88573 ET
SFCC TRM MANDATORY 2240
SFCC TRM LADY ENDURE 0244 ET

/S MANDATE 66589 ET (SOD)
/S LADY VICTOR 5139C ET
NJW 79Z 2311 ENDURE 173D ET (SOD,CHB)
/S LADY PEERLESS 4007B

HAPP BK VALOR 37C ET
BK GAME PLAN 962G
/S RRC R117 MISSY 4201

HAPP EXTRA POINT 1220 ET
JSF 12N LADY VAL 9T
SHF RIB EYE M326 R117 (SOD)
CB 44U 2U LITTLE MISSY 4Y

CED	BW	WW	YW	SC	SCF	MILK	UDDR	TEAT	CW	REA	MARB	\$CHB
+2.2	+2.1	+61	+95	+1.2	+21.4	+29	+1.3	+1.3	+80	+66	+15	+131

• Ranks in the top 16% for \$BMI; top 17% for SCF; top 18% for \$BII; top 19% for REA; top 24% for CW.



/S RRC R117 MISSY 4201

Dam of Lot 46

HEREFORD SPRING COW/CALF PAIRS



47 cow **/S LADY TRUST 011H** (DLF,HYF,IEF,MSUDF)
DOB 1/1/20 | AHA P44329995 | TATTOO 011 | POLLED

KCF BENNETT REVOLUTION X51 (SOD,CHB)					MSU TCF REVOLUTION 4R (SOD)									
/S REVOLUTION 66128 (CHB)					KCF MISS PROFICIENT U201									
/S LADY DOMINO 0158X					SHF RIB EYE M326 R117 (SOD)									
					/S LADY DOMINO 652S									
NJW 33TB 100W TRUST 167Y (SOD,CHB)					NJW 73S M326 TRUST 100W ET (SOD,CHB)					\$BMI				
/S LADY TRUST 8063F					BROOKVIEW 242 TEQUILA ROSE 33T					+425				
/S LADY JET 5000C					JET MR X818					\$BII				
					/S LADY JET 2206Z					+522				
CED	BW	WW	YW	SC	SCF	MILK	UDDR	TEAT	CW	REA	MARB	\$CHB		
+9.4	-0.2	+58	+96	+1.4	+19.7	+41	+1.3	+1.3	+68	+65	+43	+148		

- This daughter of /S Revolution 66128 offers attractive numerical balance for all measurable traits.
- Records 3@97 for BW and 2@116 for WW.
- Ranks in the top 2% for Milk; top 5% for Marb; top 6% for M&G; top 7% for BW; top 10% for CED; top 13% for \$CHB; top 15% for SC; top 18% for \$BII; top 20% for REA; top 22% for \$BMI.



TRM LADY 5224 ET
Dam of Lot 49

TRM 8128 LADY 1054
Maternal grandam of Lot 49



47A cow **SFCC TRM LADY MANDATORY 5074**
DOB 3/8/25 | AHA P44644869 | TATTOO 5074 | POLLED

/S TRM MANDATORY 88573 ET					/S MANDATE 66589 ET (SOD)									
SFCC TRM MANDATORY 2240					/S LADY VICTOR 5139C ET									
SFCC TRM LADY ENDURE 0244 ET					NJW 79Z Z311 ENDURE 173D ET (SOD,CHB)									
					/S LADY PEERLESS 4007B									
/S REVOLUTION 66128 (CHB)					KCF BENNETT REVOLUTION X51 (SOD,CHB)					\$BMI				
/S LADY TRUST 011H					/S LADY DOMINO 0158X					+481				
/S LADY TRUST 8063F					NJW 33TB 100W TRUST 167Y (SOD,CHB)					\$BII				
					/S LADY JET 5000C					+576				
CED	BW	WW	YW	SC	SCF	MILK	UDDR	TEAT	CW	REA	MARB	\$CHB		
+7.3	+1.2	+64	+102	+1.2	+23.4	+37	+1.3	+1.3	+82	+77	+29	+148		

- Ranks in the top 5% for Milk; top 6% for \$BMI; top 7% for M&G and \$BII; top 8% for SCF; top 9% for REA; top 14% for \$CHB; top 15% for Marb; top 19% for CED and CW; top 20% for BW; top 22% for WW; top 23% for YW.

49 cow **SFCC TRM LACEY 0109**
DOB 3/8/20 | AHA P44169240 | TATTOO 0109 | POLLED

NJW 79Z 22Z MIGHTY 49C ET (SOD)					NJW 67U 28M BIG MAX 22Z									
PCC 3055 49C ACE 7115					BW 91H 100W RITA 79Z ET									
C&M NEW MEXICO LADY 3055					NJW 73S M326 TRUST 100W ET (SOD,CHB)									
					STAR 8063 HEIDI 349P ET									
CHURCHILL STUD 3134A (SOD,CHB)					KJ HVH 33N REDEEM 485T ET (SOD)					\$BMI				
TRM LADY 5224 ET					CHURCHILL LADY 002X ET					+488				
TRM 8128 LADY 1054					RRO TRM LOOKOUT MOUNTAIN 8056					\$BII				
					TRM DUTCHESS 8128					+566				
CED	BW	WW	YW	SC	SCF	MILK	UDDR	TEAT	CW	REA	MARB	\$CHB		
+6.4	+1.7	+55	+81	+0.9	+24.6	+31	+1.3	+1.4	+81	+76	+16	+134		

- Lot 49 is out of a direct daughter of one of the most proven donors at TRM, Lady 1054. Her pedigree is packed with maternal strength. If you are looking for a female to enhance udder quality and functional traits while maintaining a balanced EPD profile, this daughter of the TRM and Perez herd sire "Ace" will fit the bill.
- Records 3@98.7 for BW from a dam who records 6@96 for BW and 5@103 for WW.
- Ranks in the top 5% for \$BMI; top 8% for \$BII; top 10% for REA; top 13% for Teat; top 22% for CW; top 25% for CED.

48 cow **SFCC TRM VICTORIA 0071** (DBP)
DOB 2/22/20 | AHA P44169224 | TATTOO 0071 | POLLED

NJW 73S M326 TRUST 100W ET (SOD,CHB)					KCF BENNETT 3008 M326 (SOD)									
BF ASSURANCE 5610 ET					NJW P606 72N DAYDREAM 73S									
MSU RACHAEL 31Z					TH 122 711 VICTOR 719T (SOD)									
					MSU RACHAEL 38X ET									
TRM SPECK 2097					TRM NT SPECK 3124 2003					\$BMI				
TRM VICTORIA 5058					TRM J12 TOTAL PENNY 9083					+338				
PW 962 VICTORIA 1391					PW 709 VICTOR 962					\$BII				
					PW 691 VICTORIA 894 (DOD)					+404				
CED	BW	WW	YW	SC	SCF	MILK	UDDR	TEAT	CW	REA	MARB	\$CHB		
-0.1	+3.3	+53	+86	+0.8	+15.3	+27	+1.3	+1.3	+68	+37	+06	+115		

- Third dam is an AHA Dam of Distinction.
- Posts a progeny WW ratio of 1@107 from a dam that has two daughters in production that record an average progeny WW ratio of 104 on three calves.

48A bull **SFCC TRM MERIT 5149** (DBP)
DOB 4/2/25 | AHA P44649841 | TATTOO 5149 | POLLED

JW X651 TESTED 1857 ET (CHB)					EFBEEF TFL U208 TESTED X651 ET (SOD,CHB)									
JW 1857 MERIT 21134 (CHB)					KCF MISS 22S A261									
JW 33Z VICTORIA 19027					JDH VICTOR 719T 33Z ET (SOD,CHB)									
					JW Q28X DOMINETTE 1417									
BF ASSURANCE 5610 ET					NJW 73S M326 TRUST 100W ET (SOD,CHB)					\$BMI				
SFCC TRM VICTORIA 0071					MSU RACHAEL 31Z					+430				
TRM VICTORIA 5058					TRM SPECK 2097					\$BII				
					PW 962 VICTORIA 1391					+537				
CED	BW	WW	YW	SC	SCF	MILK	UDDR	TEAT	CW	REA	MARB	\$CHB		
+4.3	+2.2	+72	+114	+1.2	+18.5	+30	+1.4	+1.4	+93	+65	+39	+175		

- Ranks in the top 3% for \$CHB; top 5% for WW, SCF and CW; top 7% for YW; top 8% for Marb; top 9% for Udder; top 12% for M&G; top 13% for Teat; top 14% for \$BII; top 20% for REA and \$BMI.



ASM 405B RED MAN 325L

The spring cows sell pasture exposed to him since April 1st.



/S LADY VICTOR 5139C ET
Maternal grandam of Lot 50



/S LADY ADVANCE 8066U
Third dam of Lot 50



/S TRM MANDATORY 88573 ET
Sire of Lots 49A, 51A, 53A and 54A

50 **/S LADY ARSENAL 2112K** (DLF,HYF,IEF,MSUDF)
DOB 2/11/22 | AHA P44333826 | TATTOO 2112 | POLLED

NJW 79Z 2311 ENDURE 173D ET (SOD,CHB)
/S ARSENAL 00161 ET (CHB)
/S LADY LEADER 7201E ET

KCF BENNETT ENCORE 2311 ET (SOD,CHB)
BW 91H 100W RITA 79Z ET
R LEADER 6964 (SOD)
/S LADY DOMINO 0158X
HYALITE ON TARGET 936 (SOD)
/S LADY DOMINO 652S
TH 223 71I VICTOR 755T (SOD)
/S LADY ADVANCE 8066U

CED	BW	WW	YW	SC	SCF	MILK	UDDR	TEAT	CW	REA	MARB	\$BMI	\$BII	\$CHB
+9.9	+1.2	+60	+94	+1.2	+21.1	+31	+1.4	+1.4	+95	+7.1	+39	+176	+568	+176

- Lot 50 is a granddaughter of the Shaw donor 5139C, who is a direct daughter of 8066U, the selection of Pete Loerh from the inaugural Shaw Female Sale and the dam of /S TRM Fort Payne 44573, the \$17,500 selection of TRM from the 2016 Shaw Bull Sale, as well as the \$13,250 selection of Upstream Ranch from the 2014 Shaw Bull Sale and produced another son that was among the top sellers in the 2013 Shaw Bull Sale.
- Records 1@103 for WW from a dam that posts progeny ratios of 2@107 for WW and 1@104 for RE and IMF.
- Ranks in the top 3% for \$CHB; top 4% for CW; top 7% for Marb; top 8% for CED, \$BMI and \$BII; top 9% for Udder; top 13% for Teat; top 14% for REA; top 20% for BW.

51 **/S LADY MASTERPLAN 2029K** (DLF,HYF,IEF,MSUDF,DBP)
DOB 1/18/22 | AHA P44334685 | TATTOO 2029 | POLLED

KCF BENNETT STRATEGY 2303 ET (CHB)
TH MASTERPLAN 183F (CHB)
TH 512X 145Y DOMINETTE 57B

SCHU-LAR ON TARGET 22S (SOD,CHB)
KCF MISS REVOLUTION X338 ET
FTF PROSPECTOR 145Y (SOD)
TH 122 71I DOMINETTE 512X ET
R LEADER 6964 (SOD)
/S LADY DOMINO 0158X
/S EFFICIENT 0925 (CHB)
TS LADY BOTTOMLINE 04

CED	BW	WW	YW	SC	SCF	MILK	UDDR	TEAT	CW	REA	MARB	\$BMI	\$BII	\$CHB
+2.7	+2.1	+77	+128	+1.1	+19.5	+28	+1.4	+1.4	+95	+7.1	+43	+181	+569	+181

- This Masterplan daughter offers one of the highest YW EPDs in the offering combined with a REA, Marbling and \$CHB combination that is among the breed's elite.
- Dam posts progeny ratios of 4@92 for BW and 1@102 for YW.
- Ranks in the top 1% for YW; top 2% for WW and \$CHB; top 4% for CW; top 5% for Marb; top 8% for \$BII; top 9% for Udder; top 13% for M&G, Teat and \$BMI; top 14% for REA; top 18% for SCF.

50A **SFCC TRM MERIT 5050** (DLF,HYF,IEF,MSUDF,MDF,DBF)
DOB 2/25/25 | AHA P44640690 | TATTOO 5050 | POLLED

JW X651 TESTED 1857 ET (CHB)
JW 1857 MERIT 21134 (CHB)
JW 332 VICTORIA 19027

/S ARSENAL 00161 ET (CHB)
/S LADY ARSENAL 2112K
/S LADY DYNASTY 8282F ET

EFBEEF TFL U208 TESTED X651 ET (SOD,CHB)
KCF MISS 22S A261
JH VICTOR 719T 33Z ET (SOD,CHB)
JW Q28X DOMINETTE 1417
NJW 79Z 2311 ENDURE 173D ET (SOD,CHB)
/S LADY LEADER 7201E ET
/S DYNASTY 66001 ET
/S LADY VICTOR 5139C ET

CED	BW	WW	YW	SC	SCF	MILK	UDDR	TEAT	CW	REA	MARB	\$CHB	\$BMI	\$BII
+9.6	+0.9	+80	+122	+1.8	+22.0	+37	+1.4	+1.5	+126	+1.10	+61	+232	+531	+662

- Ranks in the top 1% for WW, M&G, CW, REA, \$BII and \$CHB; top 2% for Marb and \$BMI; top 3% for SC and YW; top 4% for Teat; top 6% for Milk; top 9% for CED and Udder; top 13% for SCF; top 16% for BW.

51A **SFCC TRM LADY MANDATORY 5079** (DLF,HYF,IEF,MSUDF,MDF,DBF)
DOB 3/9/25 | AHA P44644864 | TATTOO 5079 | POLLED

/S MANDATE 66589 ET (SOD)
/S TRM MANDATORY 88573 ET
/S LADY VICTOR 5139C ET

TH MASTERPLAN 183F (CHB)
/S LADY MASTERPLAN 2029K
/S LADY MANDATE 9126G

R LEADER 6964 (SOD)
/S LADY DOMINO 0158X
TH 223 71I VICTOR 755T (SOD)
/S LADY ADVANCE 8066U
KCF BENNETT STRATEGY 2303 ET (CHB)
TH 512X 145Y DOMINETTE 57B
/S MANDATE 66589 ET (SOD)
/S LADY EFFICIENT 5249C

CED	BW	WW	YW	SC	SCF	MILK	UDDR	TEAT	CW	REA	MARB	\$CHB	\$BMI	\$BII
+4.3	+1.9	+74	+117	+1.1	+22.0	+31	+1.4	+1.3	+76	+9.0	+30	+141	+457	+564

- Ranks in the top 3% for WW; top 5% for YW; top 8% for \$BII; top 9% for Udder; top 10% for M&G; top 12% for \$BMI; top 14% for Marb; top 20% for \$CHB.

52 **/S LADY MASTERPLAN 2043K** (DLF,HYF,IEF,MSUDF,DBP)
DOB 1/24/22 | AHA P44334690 | TATTOO 2043 | POLLED

KCF BENNETT STRATEGY 2303 ET (CHB)
TH MASTERPLAN 183F (CHB)
TH 512X 145Y DOMINETTE 57B

HH ADVANCE 286M 1ET (SOD)
/S LADY ADVANCE 8194F ET
JET MS X010

SCHU-LAR ON TARGET 22S (SOD,CHB)
KCF MISS REVOLUTION X338 ET
FTF PROSPECTOR 145Y (SOD)
TH 122 71I DOMINETTE 512X ET
HH ADVANCE 0024K (SOD)
HH MISS ADVANCE 752G
EFBEEF SCHU-LAR PROFICIENT N093 (SOD)
JET MS Y322

CED	BW	WW	YW	SC	SCF	MILK	UDDR	TEAT	CW	REA	MARB	\$CHB	\$BMI	\$BII
+5.4	+1.2	+62	+98	+0.9	+18.2	+23	+1.5	+1.5	+66	+5.9	+17	+114	+380	+464

- Records 1@114 from a dam that posts progeny ratios of 2@102 for WW with two daughters in production that have an average nursing ratio of 2@103.
- Ranks in the top 3% for Udder; top 4% for Teat; top 6% for SCF; top 20% for BW.

52A **SFCC TRM LADY RED MAN 5039** (DLF,HYF,IEF,MSUDF,MDF,DBF)
DOB 2/23/25 | AHA P44640676 | TATTOO 5039 | POLLED

NJW 79Z 2311 ENDURE 173D ET (SOD,CHB)
ASM 405B RED MAN 325L ET
ASM 705 10Y MISS MALLORY 405B

TH MASTERPLAN 183F (CHB)
/S LADY MASTERPLAN 2043K
/S LADY ADVANCE 8194F ET

KCF BENNETT ENCORE 2311 ET (SOD,CHB)
BW 91H 100W RITA 79Z ET
NJW 73S W18 HOMETOWN 10Y ET (SOD,CHB)
ASM 122L MISS 705ET
KCF BENNETT STRATEGY 2303 ET (CHB)
TH 512X 145Y DOMINETTE 57B
HH ADVANCE 286M 1ET (SOD)
JET MS X010

CED	BW	WW	YW	SC	SCF	MILK	UDDR	TEAT	CW	REA	MARB	\$CHB	\$BMI	\$BII
+12.3	-0.9	+60	+92	+0.9	+23.9	+32	+1.4	+1.5	+88	+9.5	+21	+144	+488	+574

- Ranks in the top 2% for REA; top 4% for CED, BW and Teat; top 6% for \$BMI; top 7% for \$BII; top 9% for Udder and CW; top 16% for \$CHB; top 23% for Milk.

**DIXIELAND
DELIGHT**
Red, White & Black
ANGUS & HIRSFORD PRODUCTION SALE

- A balanced trait Mandate daughter with a highly maternal pedigree.
- Dam posts progeny ratios of 2@107 for WW.
- Ranks in the top 2% for SCF, \$BMI and \$Bil; top 4% for SC; top 9% for Udder; top 10% for Marb; top 13% for Teat; top 14% for BW; top 20% for \$CHB; top 21% for CED.

- This calving-ease female traces to the Shaw donor 652S, who is the dam of the prolific donor 0158X, the dam of /S Mandate 66589 ET, the \$62,000 1/2 interest top-selling selection of ST Genetics from the 2018 Shaw Bull Sale and also the maternal grandsire of Lot 54.
- Records 1@94 for BW from a dam that records 4@97 for BW.
- Ranks in the top 5% for BW; top 9% for Udder; top 10% for SC and Marb; top 13% for Teat; top 16% for CED; top 17% for SCHB.

- Ranks in the top 3% for SCF; top 4% for \$BML and \$BIL; top 9% for Udder; top 13% for BW; top 14% for CED; top 15% for SC; top 22% for Marb; top 23% for WW; top 24% for M&G.

- Ranks in the top 9% for BW and Udder; top 12% for CED; top 14% for SCF; \$BMI and \$BII; top 23% for SC.



FOR REFERENCE ONLY



bull

[AMF-CAF-D2F-DDF-M1F-NHF-OHF-OSF-RDF]

FOUR: KOUPIALS B&B IDENTITY

#*MILL BRAE IDENTIFIED 4031

#*CONNEALY CONFIDENCE PLUS

+*BALDRIDGE ISABEL E048

*BALDRIDGE ISABEL Y69



CED	BW	WW	YW	SC	HP	MILK	CLAW	ANGLE	CW	MARB	RE	\$C
+11	-0.3	+69	+122	+1.16	+15.4	+29	+38	+41	+75	+1.55	+1.14	+406

- **Used AI.**



bull

[AMF-CAF-D2F-DDF-M1F-NHF-OHF-OSF-RDF]

+*E&B PLUS ONE

#*CONFEALY CONFIDENCE PLUS

#+E&B LADY 1023 PRECISION 936

#CONNEALY THUNDER

SITZ EMMA E 2738



CED	BW	WW	YW	SC	HP	MILK	CLAW	ANGLE	CW	MARB	RE	SC
+12	-1.1	+70	+123	+95	+11.0	+20	+33	+42	+43	+1.11	+30	+278

- **Used AI.**



bull

(AME,CAE,D2E,DDF,MFE,NHE,OHE,OSE,BDE)

#*0 C C.JUNEAU 807.1

+*COLEMAN ROCK 7200

+*COLEMAN DONNA 714

#>*COLEMAN CHARLO 0256

#*COLEMAN DONNA 7386

#+*COLEMAN DONNA 5309

CED	BW	WW	YW	SC	HP	MILK	CLAW	ANGLE	CW	MARB	RE	\$C
+11	-1.4	+75	+130	+1.81	+16.1	+23	+28	+39	+50	+11	+75	+242

- **AI service sire on Lot 101.**

bull

#*MUSGRAVE 316 STUNNER

+*SFCC TRM COAL 0007

+*SFCC TRM BONNIE 5111

+*COLEMAN CH

*SFCC TRM BONNIE 8060



CED	BW	WW	YW	SC	HP	MILK	CLAW	ANGLE	CW	MARB	RE	SC
+3	+1.6	+58	+92	+1.74	+14.9	+29	+52	+49	+27	+38	+53	+212

ANGUS
FALL BRED HEIFER



Fall bred heifer...donor quality!



101
cow

SFCC TRM LADY COMMERCE 3590

DOB 9/19/23 | AAA +*21044004 | TATTOO 3590

*G A R SUNBEAM
***CONNEALY COMMERCE**
*AVIRA OF CONANGA 814R

#*G A R ASHLAND
***G A R ASHLAND N888**
*G A R 100X N496

#*G A R SUNRISE
*G A R INGENUITY 3132
*CONNEALY CADE
*AVIE OF CONANGA 624P
*G A R EARLY BIRD
*CHAIR ROCK AMBUSH 1018
#*G A R 100X
*G A R PROPHET F304

\$M
+83
\$W
+91
\$F
+95
\$G
+88
\$B
+184
\$C

CED	BW	WW	YW	SC	HP	MILK	CLAW	ANGLE	CW	MARB	RE	\$C
+16	-0.3	+93	+160	+77	+12.8	+24	+51	+46	+60	+1.20	+1.10	+322

- Bred AI 12/19/24 to COLEMAN EASY DECISION 1539. PE 12/25/24 to 3/1/25 to SFCC TRM COAL 3212. Checked safe.
- The lead lot in the Angus division of the 42nd Annual Dixieland Delight Sale is a daughter of TRM's \$26,000 selection from Ogeechee Angus Farm in the 2022 Southern Synergy Sale, G A R Ashland N888. As of 4/11/25, N888 IS ONE OF ONLY TWO PROVEN DAMS TO OFFER HER COMBINATION OF CED, BW, YW, MARB, RE, \$EN, \$M AND \$C.
- A maternal sister to Lot 101 was the \$10,500 selection of Wheeler Farms from the 2023 Dixieland Delight Sale.
- Lot 101 is also a maternal sister to the dam of Lot 193 in the recent Gardiner Angus sale that sold for \$16,000 after scanning with 17.14% IMF to yield a Marbling EPD of +2.42.
- Dam posts progeny ratios of 2@96 for BW, 2@105 for WW, 1@100 for YW and 6@119 for IMF.
- Ranks in the top 1% for \$W and CED; top 3% for WW; top 4% for YW; top 10% for \$M and \$G; top 15% for RE and \$C; top 20% for Marb, \$B and BW; top 25% for Doc.



CONNEALY COMMERCE
Sire of Lot 101



**SFCC TRM LADY
ICONIC 2203**
*\$10,500 maternal sister
to Lot 101...sold as
Lot 101 in the 2023
Dixieland Delight*

Fall open heifer prospects



102

HF EVERELDA ENTENSE 4048

DOB 7/17/24 | AAA *21004362 | TATTOO 4048

***E & B WILDCAT 9402**

**GAR DISCOVERY 6737H

E&B LADY PLUS 643

**PLATTEMERE WEIGH UP K360

+*HF EVERELDA ENTENSE 912

**HF EVERELDA ENTENSE 607

#*V A R DISCOVERY 2240

*G A R INGENUITY 3132

#*CONNEALY CONFIDENCE PLUS

#*E&B LADY CREDENCE 190

#*SITZ UPWARD 307R

#BARBARA OF PLATTEMERE 337

#*S A V RESOURCE 1441

**LIMESTONE EVER ENTENSE Y122

AGI

CED	BW	WW	YW	SC	HP	MILK	CLAW	ANGLE	CW	MARB	RE	\$C
+7	+2.2	+86	+147	+0.7	+14.4	+24	+4.6	+4.2	+53	+9.3	+8.5	+273

• Sells open.

• This powerful Wildcat daughter came to TRM at the side of her dam as TRM's selection from Hilton Farms in the 2024 Oklahoma Angus Gathering Sale. 4048 has an impressive numerical profile with a huge spread from BW to YW.

• The grandam of Lot 102, Everelda Entense 607, was the \$13,000 top-selling spring pair in the 2020 OAA Gathering Sale.

• The foundation fourth dam of Lot 102, Limestone Ever Entense S292, is a flush mate sister to the dam of the \$130,000 Lot 1 female from the 2008 record-setting Limestone, LLC sale and a direct daughter of Ever Entense 491G, the one-time record-setting female that produced a \$20,000-valued pregnancy in that same event. Her fifth dam, Ever Entense 491G, went to Limestone after serving as the cornerstone of the C&H Cattle Company program. C&H selected her as the \$320,000 one-time record-selling full interest female through the Bittersweet Station dispersal.

• Dam posts progeny ratios of 4@94 for BW, 3@103 for WW, 3@101 for YW and 3@109 for RE.

• Ranks in the top 10% for \$W, WW and YW; top 25% for Angle and \$G.

\$M
+71
\$W
+79
\$F
+86
\$G
+69
\$B
+156


HF EVERELDA ENTENSE 912
Dam of Lot 102

HF EVERELDA ENTENSE 607
Maternal grandam of Lot 102

ANGUS FALL OPEN HEIFER



103

cow

SFCC TRM MS BLUE COLLAR 4535 [M1F]

DOB 9/15/24 | AAA *21183711 | TATTOO 4535

*CHERRY CRK BLUE COLLAR G275
CHERRY CRK ENVITA B211 S

+*YON BOWERY F106

*SFCC TRM ANN 2092

ANN S S B22



#*S S NIAGARA Z29
TEHAMA ELITE BLACKBIRD D826
#*KIM BROKEN BOW 002
+CHERRY CRK ENVITA 1042 S
#*BASIN PAYWEIGHT 1682
#*YON BURGESS B403
#*CONNEALY COMRADE 1385
ANN S S Y58

CED	BW	WW	YW	SC	HP	MILK	CLAW	ANGLE	CW	MARB	RE	
+16	-0.6	+82	+150	+1.49	+13.0	+30	+49	+50	+67	+67	+82	+281

• Sells open.

• This donor prospect sired by Blue Collar has the phenotype, CED and BW to YW combination needed to make her an excellent donor candidate to produce top quality calving-ease bulls, which are currently bringing a massive premium.

• The dam of Lot 103 combines the TRM sire Bowery with a female that John Hill originally selected from the 2018 Genetic Opportunity Sale from Stewart Select Angus in Indiana.

• A maternal brother to the dam of Lot 103 by Coal 0007 sold for \$9,000 in the 2024 High Cotton Bull Sale.

• Ranks in the top 1% for CED; top 5% for \$W; top 10% for YW; top 15% for SC, Doc, BW and WW; top 20% for \$M and Milk; top 25% for CW.

\$M
+76
\$W
+84
\$F
+103
\$G
+55
\$B
+158
\$C



SFCC TRM ANN 2092
Dam of Lot 103



ANN S S B22
Maternal grandam of Lot 103



Fall heifer calf
splits

104
cow

EXAR BARBARAMERE NELL 2826

DOB 8/2/22 | AAA +*20446953 | TATTOO 2826

POSS EASY IMPACT 0119
#**BALDRIDGE ALTERNATIVE E125
BALDRIDGE BLACKBIRD A030

#**KM BROKEN BOW 002
*SITZ BARBARAMERE NELL 160E
**SITZ BARBARAMERE NELL 289B

#POSS TOTAL IMPACT 745
POSS ELMARETTA 736
#*HOOVER DAM
BALDRIDGE BLACKBIRD X89
#*SUMMITCREST COMPLETE 1P55
#SUMMITCREST PRINCESS 0P12
#*SITZ WISDOM 481T
SITZ BARBARAMERE NELL 73T

CED	BW	WW	YW	SC	HP	MILK	CLAW	ANGLE	CW	MARB	RE	\$C
+11	+0.5	+60	+102	+31	+9.8	+19	+4.8	+49	+36	+1.05	+43	+246

- Bred AI 12/20/24 to BALDRIDGE HEAT SEEKER H925. PE 12/25/24 to 3/1/25 to SFCC TRM SHERMAN 2211. Checked safe.
- This well-balanced Alternative daughter from a cow family proven in the famed Sitz herd, Barbaramere Nell, combines her CED and BW EPDs with an impressive Marbling EPD.
- The heifer calf at her side improves upon her mother's strengths and indicates the great things that lie ahead for this young female.
- Dam posts progeny ratios of 4@103 for WW, 3@100 for YW and 11@101 for IMF.
- Ranks in the top 10% for Marb; top 15% for \$G and CED.

104A
cow

SFCC TRM MS PREMIUM 4502

DOB 8/12/24 | AAA *21183714 | TATTOO 4502

**G A R TRANSCENDENT
*EXAR PRIME PREMIUM 2262B
**EXAR EMMA 0835

#**BALDRIDGE ALTERNATIVE E125
*EXAR BARBARAMERE NELL 2826
*SITZ BARBARAMERE NELL 160E

#*G A R MOMENTUM
**G A R PROPHET 2685
*GARDENS CACHE
#GREEN GARDEN EMMA P120
POSS EASY IMPACT 0119
BALDRIDGE BLACKBIRD A030
#**KM BROKEN BOW 002
**SITZ BARBARAMERE NELL 289B

CED	BW	WW	YW	SC	HP	MILK	CLAW	ANGLE	CW	MARB	RE	\$C
+12	+1.2	+67	+115	+23	+13.5	+14	+5.2	+47	+53	+1.89	+39	+320

- Sells open.
- Check out the combination of Marb and \$C that this donor prospect possesses to complement her CED EPD.
- Ranks in the top 1% for Marb; top 2% for \$G; top 10% for \$B and CED; top 15% for \$C.

ANGUS
FALL BRED COW/HEIFER CALF SPLIT



MCS

Lot 105A

105

cow

SFCC TRM MS HOME TOWN 2212 [M1F]

DOB 9/16/22 | AAA *20974286 | TATTOO 2212

#**G A R ASHLAND
*G A R HOME TOWN
+*CHAIR ROCK SURE FIRE 6095

#**TEHAMA TAHOE B767
MS S ROCK SUNSETPRIDE 5028H3
MS S ROCK SUNSETPRIDE 5028E6



CED	BW	WW	YW	SC	HP	MILK	CLAW	ANGLE	CW	MARB	RE	\$C
+12	+0.5	+79	+145	+99	+13.5	+31	+53	+43	+71	+1.14	+80	+326

- Bred AI 12/20/24 to BALDRIDGE HEAT SEEKER H925. PE 12/25/24 to 3/1/25 to SFCC TRM SHERMAN 2211. Checked safe.
- The dam of this big-numbered Home Town daughter was TRM's selection from the Solid Rock sale in Texas as a bred heifer and has proven her worth since she has been in production, as is evident with the heifer calf at her side.
- Dam posts progeny ratios of 1@104 for WW.
- Ranks in the top 1% for HS; top 3% for SC; top 4% for \$W and \$B; top 5% for YW CW, and \$F; top 10% for CED, WW, Marb, PAP and \$G; top 20% for Milk, Angle and RE; top 25% for \$M.



105A

cow

SFCC TRM MS BLUE COLLAR 4512 [M1F]

DOB 9/9/24 | AAA *21183707 | TATTOO 4512

#**TEHAMA PATRIARCH F028
*CHERRY CRK BLUE COLLAR G275
CHERRY CRK ENVITA B211 S

#**G A R HOME TOWN
*SFCC TRM MS HOME TOWN 2212
MS S ROCK SUNSETPRIDE 5028H3



CED	BW	WW	YW	SC	HP	MILK	CLAW	ANGLE	CW	MARB	RE	\$C
+11	+0.3	+66	+130	+1.47	+18.9	+27	+48	+45	+61	+1.20	+91	+330

- Sells open.
- This donor prospect offers one of the most impressive numerical profiles in the sale and is as well balanced visually as she is on paper.
- Ranks in the top 10% for \$C; top 15% for SC, \$M, \$G, \$B and CED; top 20% for Marb and \$F.

MS S ROCK SUNSETPRIDE 5028H3

Dam of Lot 105





SFCC TRM BONNIE 5111
Dam of Lot 106



AMBROSE BONNIE P14
Maternal granddam of Lot 106



106
cow

SFCC TRM MS PAPPY 2268

DOB 12/8/22 | AAA *21183726 | TATTOO 2268

##**HOOVER NO DOUBT
**BALDRIDGE PAPPY
**BALDRIDGE ISABEL B061

##*S A V PRIVILEGE 3030
**SFCC TRM BONNIE 5111
#AMBROSE BONNIE P14

##*MOGCK BULLSEYE
*MISS BLACKCAP ELLSTON J2
##**G A R PROPHET
*BALDRIDGE ISABEL Y69
##*S A V PRIORITY 7283
**S A V BLACKCAP MAY 1442
#C A FUTURE DIRECTION 5321
BRANCH BONNIE M9

CED	BW	WW	YW	SC	HP	MILK	CLAW	ANGLE	CW	MARB	RE	\$C
+3	+1.0	+80	+133	+1.36	+13.4	+18	+51	+40	+52	+80	+74	+261

- Bred AI 12/20/24 to RAVEN REPUBLIC I564. PE 12/25/24 to 3/1/25 to SFCC TRM SHERMAN 2211. Checked safe.
- Lot 106 is a daughter of the highly proven TRM donor Bonnie 5111, who is a direct daughter of the Tennessee River Music Angus matriarch and Pathfinder Dam Ambrose Bonnie P14.
- Maternal brothers to Lot 106 include the TRM herd sires SFCC TRM Gauge 8184 and SFCC TRM Coal 0007.
- Records 1@81 for BW ratio.
- Dam posts progeny ratios of 4@94 for BW, 4@108 for WW, 2@110 for YW and 2@101 for RE.
- Ranks in the top 10% for Angle and WW; top 15% for \$W and YW; top 20% for SC; top 25% for Marb and \$G.
- Maternal sister sells as Lot 115.

106A
cow

SFCC TRM BONNIE 4581

DOB 10/9/24 | AAA *21204962 | TATTOO 4581

*DB ICONIC G95
**SFCC TRM ICONIC 2283 ET
SHAW LADY FINAL PRODUCT 4164

##*BALDRIDGE PAPPY
**SFCC TRM MS PAPPY 2268
**SFCC TRM BONNIE 5111

##*MUSGRAVE 316 STUNNER
*DB MS DISCOVERY D13
##*CONNEALY FINAL PRODUCT
SHAW LADY BANDWAGON 9050W
##**HOOVER NO DOUBT
*BALDRIDGE ISABEL B061
##*S A V PRIVILEGE 3030
#AMBROSE BONNIE P14

CED	BW	WW	YW	SC	HP	MILK	CLAW	ANGLE	CW	MARB	RE	\$C
+4	0.0	+80	+136	+2.05	+15.1	+24	+60	+42	+57	+1.00	+47	+273

- Sells open.
- Another big spread donor prospect that combines two of the most prolific cow families in the Angus herd at TRM, 4164 and Bonnie. 4581 possesses the blend of power and femininity that we have come to expect from those two cow lines.
- Ranks in the top 2% for SC; top 10% for \$W; top 15% for WW; top 20% for YW; top 25% for Angle and BW.

FALL BRED COW/HEIFER CALF SPLIT


POLLARD EILEENMERE 9637

\$60,000 maternal sister to dam of Lot 109


BOBO EILEENMERE 3467

Maternal granddam of Lot 109

109
cow

POLLARD EILEENMERE 1558

DOB 8/7/21 | AAA *20127988 | TATTOO 1558

***G A R SURE FIRE 6404
#*GB FIREBALL 672
*GB ANTICIPATION 432

***DEER VALLEY GROWTH FUND
*POLLARD EILEENMERE 9856
*BOBO EILEENMERE 3467

CED	BW	WW	YW	SC	HP	MILK	CLAW	ANGLE	CW	MARB	RE	\$C
+8	+2.3	+90	+155	+57	+13.3	+34	+49	+46	+78	+1.11	+93	+342

- PE 12/25/24 to 3/1/25 to SFCC TRM SHERMAN 2211. Checked safe.
- Lot 109 came to TRM as a \$15,000 selection from the 2023 Pollard Farms Production Sale. She is another example of a long line of great ones produced by her grandam, 3467, who has been among the most consistent and prolific donors in the Pollard herd.
- This young cow combined an individual weaning ratio of 117 with a %IMF ratio of 137 and an URE ratio of 113 to offer the carcass excellence of her famous sire with the breed-leading growth genetics of her maternal grandsire, who been a leader of progeny registered for the past several years.
- A maternal sister to the dam of Lot 109 was the \$60,000 selection of Vintage Angus from the 2021 Pollard Sale.
- Records 1@86 for BW from a dam who posts progeny ratios of 2@111 for WW, 1@137 for IMF and 1@113 for RE.
- Ranks in the top 1% for \$W; top 2% for CW, \$M, \$C, WW and YW; top 5% for \$B; top 10% for Marb, \$F, \$G and Milk; top 15% for RE; top 20% for Doc.

109A
cow

SFCC TRM MS CHARLO 4626

DOB 12/3/24 | AAA *21183741 | TATTOO 4626

***COLEMAN CHARLO 0256
*COLEMAN CHARLO 5411
*COLEMAN DONNA 0296

***GB FIREBALL 672
*POLLARD EILEENMERE 1558
*POLLARD EILEENMERE 9856

CED	BW	WW	YW	SC	HP	MILK	CLAW	ANGLE	CW	MARB	RE	\$C
+14	-1.7	+63	+116	+1.26	+16.5	+35	+49	+48	+45	+1.11	+43	+289

- Sells open.
- This unique donor prospect offers a combination of elite EPDs and \$Values for maternal and carcass traits that are all profit drivers, allowing her to fit the needs of any breeding program.
- Ranks in the top 2% for \$M; top 4% for CED; top 5% for BW and Milk; top 10% for \$W; top 25% for SC, Doc and Marb.

Two breeds – one legendary sale!

ANGUS
FALL BRED COW/BULL CALF SPLIT



Fall bull calf
splits



VIRGINIA TECH STATESMAN
Sire of Lot 110A



110
cow

DEER VALLEY RITA 2676

DOB 8/19/22 | AAA *20614103 | TATTOO 2676

#**HOOVER NO DOUBT
*STERLING PACIFIC 904
**BALDRIDGE ISABEL B082

#SYDGEN ENHANCE
*DEER VALLEY RITA 9722
**EXAR RITA 6840

#**MOGCK BULLSEYE
*MISS BLACKCAP ELLSTON J2
#**G A R PROPHET
*BALDRIDGE ISABEL Y69
#**SYDGEN EXCEED 3223
SYDGEN RITA 2618
#3F EPIC 4631
**G A R SUNRISE 1482

\$M
+35
\$W
+42
\$F
+111
\$G
+82
\$B
+193
\$C

CED	BW	WW	YW	SC	HP	MILK	CLAW	ANGLE	CW	MARB	RE	\$C
-1	+2.8	+65	+117	+98	+10.3	+13	+57	+57	+59	+1.32	+62	+285

- Bred AI 12/20/24 to RAVEN REPUBLIC I564. PE 12/25/24 to 3/1/25 to SFCC TRM SHERMAN 2211. Checked safe.
- Rita 2676 is a balanced-trait daughter of the second-generation Deer Valley Rita, Rita 9722, and is sired by the proven female sire Pacific 904. 2676 recorded an individual weaning ratio of 104 and a yearling ratio of 100 while showing ultrasound ratios IMF 129 and REA 108.
- The dam of Lot 110 blends a proven leader of the ORigen roster, Enhance, with a direct daughter of the \$180,000-valued Express Ranches and Allison Family matriarch Sunrise 1482 by Epic.
- Records 1@92 for BW from a dam who posts progeny ratios of 1@129 for IMF and 1@107 for RE.
- Ranks in the top 3% for Marb; top 4% for \$G; top 5% for \$B; top 10% for Doc; top 15% for \$F and \$C; top 20% for CW.

110A
bull

SFCC TRM STATESMAN 4504

DOB 8/25/24 | AAA *21210147 | TATTOO 4504

#**TEHAMA PATRIARCH F028
*VIRGINIA TECH STATESMAN
**VPI 310A RITA 966 ET

**STERLING PACIFIC 904
*DEER VALLEY RITA 2676
**DEER VALLEY RITA 9722

#**S S NIAGARA Z29
TEHAMA ELITE BLACKBIRD D826
#**ELLINGSON HOMESTEAD 6030
AED RITA 310A
#**HOOVER NO DOUBT
*BALDRIDGE ISABEL B082
#SYDGEN ENHANCE
**EXAR RITA 6840

\$M
+50
\$W
+63
\$F
+144
\$G
+74
\$B
+218
\$C

CED	BW	WW	YW	SC	HP	MILK	CLAW	ANGLE	CW	MARB	RE	\$C
0	+2.4	+92	+170	+1.40	+18.6	+15	+61	+56	+92	+1.26	+64	+333

- This monster numbered Statesman son offers the same phenotype that has led to his paternal siblings being such popular choices at sales across the country while possessing breed elite genetic predictors for performance, marbling and heifer pregnancy that yield exceptional \$Value indexes for \$F, \$B and \$C.
- Ranks in the top 1% for CW and \$F; top 2% for YW; top 3% for WW; top 4% for \$B; top 5% for Doc; top 10% for \$C; top 15% for Marb; top 20% for SC and \$G.
- Birth weight 65 lbs.





TEHAMA TAHOE B767
Sire of Lot 111

111
cow

EXAR SHADOE 2253

DOB 7/16/22 | AAA 20669968 | TATTOO 2253

*TEHAMA UPWARD Y238
#**TEHAMA **TAHOE B767**
+TEHAMA MARY BLACKBIRD Y684
#**DEER VALLEY GROWTH FUND
JJ SHADOE 0028
*WHITESTONE SHADOE 5325

CED	BW	WW	YW	SC	HP	MILK	CLAW	ANGLE	CW	MARB	RE	\$C
+3	+2.8	+96	+167	+70	+11.6	+34	+4.5	+38	+74	+70	+53	+275

- Sells open. Fully guaranteed to breed.
- The Shadoe cow line has become known for impeccable phenotype, and this descendant is no exception.
- 2253 complements her exceptional looks with an elite set of genetic predictors for growth and performance and backs up the numbers with the herd sire prospect she produced at her side.
- Ranks in the top 1% for \$W, WW and YW; top 3% for CW; top 10% for Angle and Milk; top 15% for \$M; top 20% for Doc and \$C; top 25% for \$F.

111A
bull

SFCC TRM REGIMENT 4525

DOB 9/11/24 | AAA *21183719 | TATTOO 4525

+*WILKS REGIMENT 9035
#**WILKS REGIMENT **1359**
+*XLAR LADY 8139
#**TEHAMA TAHOE B767
EXAR SHADOE 2253
JJ SHADOE 0028

CED	BW	WW	YW	SC	HP	MILK	CLAW	ANGLE	CW	MARB	RE	\$C
+6	+2.7	+103	+178	+1.23	+9.5	+34	+5.7	+43	+78	+77	+1.05	+289

- Commercial producers have been paying a huge premium for high WW and YW bulls this spring. This impressive herd sire prospect certainly meets those criteria while maintaining a moderate BW EPD and an outstanding set of \$Value indexes.
- Ranks in the top 1% for \$W, WW and YW; top 10% for CW and Milk; top 15% for RE; top 20% for Doc and \$F; top 25% for \$B and \$C.
- Birth weight 87 lbs.




114
cow

SFCC TRM LADY ADVANCE 1001

DOB 2/2/21 | AAA **20003409 | TATTOO 1001

**G A R ASHLAND
 *G A R HOME TOWN
 **CHAIR ROCK SURE FIRE 6095

*G A R ADVANCE
 CAM GOODE ADVANCE A442
 +GOODE MANDATE 1701



CED	BW	WW	YW	SC	HP	MILK	CLAW	ANGLE	CW	MARB	RE	\$C
+15	-0.3	+75	+143	+39	+14.0	+30	+69	+51	+64	+1.60	+53	+321

- PE 4/1/25 to sale day to SFCC TRM SHERMAN 2211.
- The now-deceased dam of Lot 114, A442, was the \$27,500 selection of Pollard Farms in the 2020 Dixieland Delight and amassed \$145,815 in progeny sales for them prior to her death.
- A flush sister to Lot 114, SFCC TRM Lady Advance 1015, was the \$56,000 top-selling Angus lot in the 2021 Dixieland Delight, selected by Mark Butz in Iowa.
- Maternal sibs to Lot 114 include a \$35,000 selection of Circle G as a first-calf pair from the 2023 Pollard Female Sale; a \$13,000 heifer calf also chosen by Circle G from the 2023 Denim & Diamonds Sale; G A R Sure Fire A8005, the \$80,000 half interest third top-selling selection of DNB Co. of Nebraska from the 2020 Gardiner Angus Ranch Sale; the \$15,500 2/3 interest top-selling Lot 1 bull from the 2021 High Cotton Sale, SFCC TRM Advance Growth 9232, now working in the Wheeler Farms and Spur Ranch herds in Oklahoma; as well as two more maternal sisters that sold for \$15,000 and \$10,000 in the 2024 Pollard Female Sale; a \$9,000 maternal sister that sold in the 2022 Dixieland Delight, and a multitude of maternal brothers that have sold in Pollard and TRM bull sales for an average just shy of \$8,000, pushing the progeny sales of A442 to well over \$300,000.
- Dam posts progeny ratios of 3@97 for BW, 3@112 for WW, 1@114 for YW and 37@108 for IMF.
- Ranks in the top 2% for CED; top 4% for Marb; top 5% for SG; top 10% for \$B; top 15% for \$F, \$C and YW; top 20% for BW and Milk; top 25% for \$W and WW.

114A
cow

SFCC TRM LADY SHERMAN 5147

DOB 4/1/25 | AAA 21234905 | TATTOO 5147

**BALDRIDGE SHERMAN
 **SFCC TRM SHERMAN 2211 ET
 **SFCC TRM BONNIE 5111

*G A R HOME TOWN
 **SFCC TRM LADY ADVANCE 1001
 CAM GOODE ADVANCE A442

CED	BW	WW	YW	SC	HP	MILK	CLAW	ANGLE	CW	MARB	RE	\$C
+18	+0.7	+76	+136	+1.02	+15.1	+25	+56	+43	+61	+1.12	+73	+308

- Ranks in the top 20% for Doc, \$G, \$B, \$C and YW; top 25% for Marb, \$W, \$F, HP and WW.



CAM GOODE ADVANCE A442

Dam of Lot 114



G A R SURE FIRE A8005

\$160,000-valued maternal brother to Lot 114



SFCC TRM LADY ADVANCE 1015

\$56,000 maternal sister to Lot 114



POLLARD BLACKBIRD 1658

\$35,000 maternal sister to Lot 114

Spring cow/calf pairs

ANGUS SPRING COW/CALF PAIRS



115	SFCC TRM 5111 BONNIE 0010	
DOB 1/9/20	AAA +*20096320	TATTOO 0010
#**LD CAPITALIST 316	#*CONNEALY CAPITALIST 028	\$M
#*MUSGRAVE 316 STUNNER	LD DIXIE ERICA 2053	+63
#MCATL BLACKBIRD 831-1378	#MCATL PURE PRODUCT 903-55	\$W
	MCATL BLACKBIRD 1378-573	+80
	#*S A V PRIORITY 7283	\$F
#*S A V PRIVILEGE 3030	+*S A V BLACKCAP MAY 1442	+124
+*SFCC TRM BONNIE 5111	#C A FUTURE DIRECTION 5321	\$G
#AMBROSE BONNIE P14	BRANCH BONNIE M9	+47
		\$B
		+171
		\$C
		+285

- Will calve before sale day to SFCC TRM SHERMAN 2211.
- Lot 115 is a daughter of the highly proven TRM donor Bonnie 5111, a direct daughter of the Tennessee River Music matriarch and Pathfinder Dam Ambrose Bonnie P14.
- Lot 115 is a flush sister to the TRM sire SFCC TRM Coal 0007 and a maternal brother to SFCC TRM Gauge 8184.
- Dam posts progeny ratios of 4@94 for BW, 4@108 for WW, 2@110 for YW and 2@101 for RE.
- Ranks in the top 3% for \$F; top 4% for CW and \$W; top 15% for \$B, \$C and Milk; top 20% for Angle, WW and YW.
- Maternal sister sells as Lot 106. Daughter sells as Lot 116.

116	SFCC TRM MS WILDCAT 3242 ET	
DOB 2/22/23	AAA +*21183735	TATTOO 3242
+*GAR DISCOVERY 6737H	#*V A R DISCOVERY 2240	\$M
*E & B WILDCAT 9402	*G A R INGENUITY 3132	+77
E&B LADY PLUS 643	#*CONNEALY CONFIDENCE PLUS	\$W
	#*E&B LADY CREDENCE 190	+90
#*MUSGRAVE 316 STUNNER	#*LD CAPITALIST 316	\$F
+*SFCC TRM 5111 BONNIE 0010	#MCATL BLACKBIRD 831-1378	+101
+*SFCC TRM BONNIE 5111	#*S A V PRIVILEGE 3030	\$G
	#AMBROSE BONNIE P14	+70
		\$B
		+171
		\$C
		+299

- Will be bred AI to RAVEN REPUBLIC 1564 prior to sale day.
- Lot 116 is a granddaughter of the highly proven TRM donor Bonnie 5111, a direct daughter of the Tennessee River Music matriarch and Pathfinder Dam Ambrose Bonnie P14.
- The dam of Lot 116 sells as Lot 115. She is a flush sister to the TRM sire SFCC TRM Coal 0007 and a maternal brother to SFCC TRM Gauge 8184.
- Ranks in the top 2% for \$W; top 10% for WW and YW; top 15% for Milk; top 20% for \$M, \$C, CED and BW; top 25% for Marb and \$G.



SFCC TRM BONNIE 5111
Dam of Lot 115 and maternal grandam of Lot 116

116A	SFCC TRM NORTH STAR 5005	
DOB 2/14/25	AAA 21226664	TATTOO 5005
+*SQUARE B TRUE NORTH 8052	#*S A V RAINFALL 6846	\$M
*BEAR MTN NORTH STAR	ELBANNA OF CONANGA 1209	+72
*BEAR MTN FOREVER LADY 0579	*BEAR MTN JUSTIFY	\$W
	BEAR MTN FOREVER LADY 7833	+81
*E & B WILDCAT 9402	+*GAR DISCOVERY 6737H	\$F
+*SFCC TRM MS WILDCAT 3242 ET	E&B LADY PLUS 643	+100
+*SFCC TRM 5111 BONNIE 0010	#*MUSGRAVE 316 STUNNER	\$G
	+*SFCC TRM BONNIE 5111	+77
		\$B
		+177
		\$C
		+302

- Ranks in the top 10% for \$W, CED and BW; top 15% for Marb, \$G and YW; top 20% for \$C and WW; top 25% for \$B.



AMBROSE BONNIE P14
Maternal grandam of Lot 115 and third dam of Lot 116

LiveAuctions.TV

Watch the sale in real time
and bid online at
liveauctions.tv
(high speed internet required)



SITZ HENRIETTA PRIDE 285U
Fourth dam of Lot 118

118

cow

SHAW LADY INCENTIVE 36

DOB 1/2/23 | AAA +*20711315 | TATTOO 36

#*SITZ STELLAR 726D

*SITZ INCENTIVE 704H

#*SITZ BARBARAMERE NELL 53F

#*BASIN ADVANCE 5016

*EXAR HENRIETTA PRIDE 7045

*EXAR HENRIETTA PRIDE 5158

#*MOHNNEN SUBSTANTIAL 272

*SITZ PRIDE 200B

*SITZ INVASION 574D

SITZ BARBARAMERE NELL 105D

#*BASIN ADVANCE 3134

+*BASIN JOY 2006

#*EXAR DENVER 2002B

+*EXAR HENRIETTA PRIDE 3680



CED	BW	WW	YW	SC	HP	MILK	CLAW	ANGLE	CW	MARB	RE	\$C
0	+4.2	+90	+149	-.23	+8.5	+25	+32	+33	+73	+76	+64	+295

- Will be bred AI to RAVEN REPUBLIC I564 prior to sale day.
- Lot 118 descends from a direct daughter of the past Ankony Angus donor Henrietta Pride 285U, who was a \$95,000 donor for Express Ranches and is a maternal sister to the multi-million dollar producer Sitz Henrietta Pride 643T and to Sitz Upward 307R.
- Dam posts progeny ratios of 3@98 for BW, 4@109 for WW, 2@106 for YW and 10@106 for IMF.
- Ranks in the top 3% for Claw and Angle; top 4% for WW; top 10% for \$F and YW; top 15% for CW and \$W; top 25% for \$B and \$C.

117

cow

SHAW LADY PATRIARCH 350

DOB 1/29/23 | AAA +*20711357 | TATTOO 350

#*S S NIAGARA Z29

#*TEHAMA PATRIARCH F028

TEHAMA ELITE BLACKBIRD D826

#*BASIN PAYWEIGHT 1682

SHAW LADY PAYWEIGHT 6430

SHAW LADY FINAL PRODUCT 2493

#*HOOVER DAM

JET S S X144

#*CONNEALY THUNDER

TEHAMA ELITE BLACKBIRD Z630

#*BASIN PAYWEIGHT 006S

21AR O LASS 7017

#*CONNEALY FINAL PRODUCT

KOUPAL ELSIEMERE 0275F



CED	BW	WW	YW	SC	HP	MILK	CLAW	ANGLE	CW	MARB	RE	\$C
+11	+0.3	+77	+138	+68	+13.6	+32	+46	+55	+58	+96	+57	+266

- Will be bred AI to RAVEN REPUBLIC I564 prior to sale day.
- This first-calf heifer by Patriarch offers attractive numerical balance for a multitude of traits and stems from a productive dam.
- Dam posts progeny ratios of 5@98 for BW and 3@104 for WW.
- Ranks in the top 10% for Doc; top 15% for \$W, CED and Milk; top 20% for YW; top 25% for WW.

118A

cow

SFCC LADY NORTH STAR 5008

DOB 2/16/25 | AAA 21226340 | TATTOO 5008

+*SQUARE B TRUE NORTH 8052

*BEAR MTN NORTH STAR

*BEAR MTN FOREVER LADY 0579

*SITZ INCENTIVE 704H

+*SHAW LADY INCENTIVE 36

*EXAR HENRIETTA PRIDE 7045

#*S A V RAINFALL 6846

ELBANNA OF CONANGA 1209

*BEAR MTN JUSTIFY

BEAR MTN FOREVER LADY 7833

#*SITZ STELLAR 726D

#*SITZ BARBARAMERE NELL 53F

#*BASIN ADVANCE 5016

*EXAR HENRIETTA PRIDE 5158

CED	BW	WW	YW	SC	HP	MILK	CLAW	ANGLE	CW	MARB	RE	\$C
I+8	I+1.3	I+82	I+144	I+.67	I+9.5	I+25	I+.37	I+.40	I+64	I+1.00	I+.79	+301

- Ranks in the top 15% for Marb and \$W; top 20% for Doc and \$G; top 25% for CED and BW.

117A

bull

SFCC TRM ICONIC 5140

DOB 3/29/25 | AAA 21234904 | TATTOO 5140

*DB ICONIC G95

+*SFCC TRM ICONIC 2283 ET

SHAW LADY FINAL PRODUCT 4164

#*TEHAMA PATRIARCH F028

+*SHAW LADY PATRIARCH 350

SHAW LADY PAYWEIGHT 6430

#*MUSGRAVE 316 STUNNER

*DB MS DISCOVERY D13

#*CONNEALY FINAL PRODUCT

SHAW LADY BANDWAGON 9050W

#*S S NIAGARA Z29

TEHAMA ELITE BLACKBIRD D826

#*BASIN PAYWEIGHT 1682

SHAW LADY FINAL PRODUCT 2493

CED	BW	WW	YW	SC	HP	MILK	CLAW	ANGLE	CW	MARB	RE	\$C
I+10	I-0.1	I+73	I+127	I+1.07	I+13.1	I+29	I+.50	I+.55	I+52	I+1.18	I+.49	+277

- Ranks in the top 15% for Marb and \$W; top 20% for Doc and \$G; top 25% for CED and BW.

119

cow

PAF BLACKCAP BARONESS 2240

DOB 2/4/22 | AAA *20388899 | TATTOO 2240

#*BASIN PAYWEIGHT 1682

+*DEER VALLEY GROWTH FUND

+*DEER VALLEY RITA 36113

#*KM BROKEN BOW 002

*PAF BLACKCAP BARONESS 9310

PAF BLACKCAP BARONESS 2120

#*BASIN PAYWEIGHT 006S

21AR O LASS 7017

*PLATTEMERE WEIGH UP K360

+*DEER VALLEY RITA 9457

#*SUMMITCREST COMPLETE 1P55

#SUMMITCREST PRINCESS OP12

#*CONNEALY CONSENSUS 7229

PAF BLACKCAP BARONESS 1056

CED	BW	WW	YW	SC	HP	MILK	CLAW	ANGLE	CW	MARB	RE	\$C
+6	+2.2	+80	+141	+58	+8.9	+27	+51	+40	+72	+47	+81	+272

- Will calve before sale day to SHAW EXCLUSIVE 33019.
- A productive young female that offers the WW and YW combination we have come to expect from Growth Fund progeny.
- Dam posts progeny ratios of 4@106 for WW and 1@108 for YW.
- Ranks in the top 10% for \$F; top 15% for Angle, CW, WW and YW; top 20% for \$W.

join us Saturday, May 3rd 2025

ANGUS SPRING COW/CALF PAIRS



RES DARK FIRE E612
Sire of Lots 120 and 121

120

cow

SFCC TRM LADY FIRE 0035

DOB 2/4/20

AAA 20293302

TATTOO 0035

#*G A R SURE FIRE

*RES DARK FIRE E612

*RES ELELA 193 587 466

**CONNEALY IN SURE 8524

+CHAIR ROCK 5050 G A R 8086

#CONNEALY THUNDER

RES ELELA 721 5652 193

#*BALDRIDGE COMMAND C036

*SHAW LADY COMMAND 867

SHAW LADY CASH 580

**EF COMMANDO 1366

BALDRIDGE BLACKBIRD A030

**BARSTOW CASH

SHAW LADY PROTEGE 0280W

\$M

+65

\$W

+69

\$F

+112

\$G

+58

\$B

+170

\$C

CED

BW

WW

YW

SC

HP

MILK

CLAW

ANGLE

CW

MARB

RE

\$C

+8

+1.9

+81

+146

+43

+13.0

+22

+45

+45

+60

+76

+69

+285

- PE 4/1/25 to sale day to SFCC TRM SHERMAN 2211.
- This proven calf raiser is angular and feminine with a beautiful udder and a solid numerical profile.
- Records 1@108 for WW ratio.
- Ranks in the top 4% for YW; top 10% for \$F and WW; top 15% for CW, \$B and \$C; top 20% for \$W; top 25% for \$G.

121

cow

SFCC TRM LADY 0050

DOB 2/9/20

AAA 20293304

TATTOO 0050

#**G A R SURE FIRE

*RES DARK FIRE E612

*RES ELELA 193 587 466

#**CONNEALY IN SURE 8524

*CHAIR ROCK 5050 G A R 8086

#CONNEALY THUNDER

RES ELELA 721 5652 193

#*MUSGRAVE AVIATOR

*SHAW LADY AVIATOR 816

SHAW LADY PAYWEIGHT 6027

#*KROUPALS B&B IDENTITY

MCATL FOREVER LADY 1429-138

#**BASIN PAYWEIGHT 1682

#SHAW LADY NEW DAY 642S

CED	BW	WW	YW	SC	HP	MILK	CLAW	ANGLE	CW	MARB	RE	\$C
+5	+2.0	+61	+107	+97	+16.8	+27	+42	+40	+45	+86	+52	+301

\$M

+95

\$W

+65

\$F

+100

\$G

+59

\$B

+159

\$C

- PE 4/1/25 to sale day to SFCC TRM SHERMAN 2211.
- Check out the \$M Value this Dark Fire daughter offers that affirms the impressive progeny ratios of her dam.
- Dam posts progeny ratios of 3@101 for BW, 1@103 for WW, 1@107 for YW, 1@126 for IMF and 1@101 for RE.
- Ranks in the top 2% for \$M; top 10% for Angle and \$C; top 20% for Claw and Marb; top 25% for \$G and \$B.

120A

cow

SFCC TRM LADY EXCLUSIVE 5117

DOB 3/21/25

AAA 21224735

TATTOO 5117

*MUSGRAVE 316 EXCLUSIVE

SHAW EXCLUSIVE 33019

SHAW LADY COMMAND 9176

*LD CAPITALIST 316

*MUSGRAVE PRIM LASSIE 163-386

*MUSGRAVE PRIM LASSIE 163-386

**BALDRIDGE COMMAND C036

SHAW LADY CASH 5157

*RES DARK FIRE E612

SFCC TRM LADY FIRE 0035

*SHAW LADY COMMAND 867

**G A R SURE FIRE

*RES ELELA 193 587 466

**BALDRIDGE COMMAND C036

SHAW LADY CASH 580

\$M

+64

\$W

+75

\$F

+107

\$G

+59

\$B

+166

\$C

+279

CED

BW

WW

YW

SC

HP

MILK

CLAW

ANGLE

CW

MARB

RE

+6

+1.2

+81

+143

+44

+13.1

+25

+52

+51

+61

+77

+78

- Ranks in the top 15% for \$W, WW and YW; top 25% for \$F.

121A

cow

SFCC TRM LADY SHERMAN 5129

DOB 3/26/25

AAA 21226352

TATTOO 5129

*BALDRIDGE SHERMAN

*SFCC TRM SHERMAN 2211 ET

*SFCC TRM BONNIE 5111

*GARDENS CACHE

*BALDRIDGE ISABEL D753

#S A V PRIVILEGE 3030

#AMBROSE BONNIE P14

*+*G A R SURE FIRE

*RES ELELA 193 587 466

#MUSGRAVE AVIATOR

SHAW LADY PAYWEIGHT 6027

*RES DARK FIRE E612

SFCC TRM LADY 0050

*SHAW LADY AVIATOR 816

\$M

+91

\$W

+68

\$F

+101

\$G

+57

\$B

+158

\$C

+296

CED

BW

WW

YW

SC

HP

MILK

CLAW

ANGLE

CW

MARB

RE

+3

+1.9

+69

+118

+131

+16.5

+24

+42

+38

+51

+75

+73

- Ranks in the top 4% for \$M; top 10% for Angle; top 15% for HP; top 20% for Claw; top 25% for SC and \$C.

...for this Red, White and Black event



CF FLY BIS 110
Dam of Lot 122



SFCC TRM JG STORMY 8146
Maternal sister to Lot 122



SFCC TRM FLY BIS 9164
Maternal sister to Lot 122

122
cow

SFCC JG FLY BIS 1050

DOB 2/18/21 | AAA +20295102 | TATTOO 1050

#**HOOVER NO DOUBT
*HOOVER KNOW HOW
#BLKCP EMPRESS ELLSTON L265

#*S A V BISMARCK 5682
CF FLY BIS 110
CF FLY PLUS 1108

#*MOGCK BULLSEYE
*MISS BLACKCAP ELLSTON J2
+SYDGEN STORM 8504
BLKCP EMPRESS ELLSTON J120
#**G A R GRID MAKER
S A V ABIGALE 0451
#*MYTTY IN FOCUS
#CF FLY PLUS 2906

\$M
+48
\$W
+35
\$F
+97
\$G
+55
\$B
+152
\$C
+245

CED	BW	WW	YW	SC	HP	MILK	CLAW	ANGLE	CW	MARB	RE	\$C
i+5	i+1.3	i+56	i+108	i+1.38	i+14.2	i+11	i+.49	i+.46	i+36	i+.71	i+.67	+245

- Will calve before sale day to SFCC TRM SHERMAN 2211.
- Ranks in the top 20% for SC.

- The now-deceased donor dam of Lot 122, CF Fly Bis 110, was the \$44,000-valued top selling Angus female in the 2015 Dixieland Delight Sale. 110 is a beautiful and powerful donor female that is a direct daughter of the Pathfinder Sire and former breed leader for registrations, SAV Bismarck 5682, back to a daughter of the Pathfinder Sire and ABS Global AI sire Mytty In Focus, and back to the Pathfinder granddam CF Fly Plus 2906. 110 is one of the best Bismarck daughters in existence with a tremendous number scheme and impeccable phenotype. This absolute powerhouse had an individual birth ratio of 95, a weaning ratio of 106 and stems from a dam that records WR 2@107.
- Four maternal sisters to Lot 122 averaged \$9,313 per lot in the 2023 Dixieland Delight, while three other maternal sisters to Lot 122 led off the Angus offering in the 2021 Dixieland Delight Sale and grossed \$18,500 to average \$6,167, with four maternal sib embryos selling for \$700 per embryo in that same offering.
- Another maternal sister to Lot 122 by S A V Rainfall sold as the top open heifer in the 2019 Dixieland Delight Sale to Farmington Angus and Deer Ridge Angus for \$13,250. Other maternal sisters to Lot 122 sold in the 2016 Dixieland Delight Sale to Burns Farm, Pikeville, TN, and Jared Ray Aden, Saint Joseph, IL, for an impressive average of \$5,125, while another maternal sister to Lot 122 by Denver sold to Pollard Farms in Oklahoma for \$12,000 from our 2015 sale.



YON BOWERY F106
Sire of Lot 123

123
cow

SFCC TRM PRINCESS 0160

DOB 4/26/20 | AAA *20077013 | TATTOO 0160

#**BASIN PAYWEIGHT 1682
*YON BOWERY F106
#**YON BURGESS B403

+EXAR UNTAPPED 4710B
CASH PRINCESS 4065 674
TIMBERLAND AAF TOTAL 4065

#**BASIN PAYWEIGHT 006S
21AR O LASS 7017
#*YON FUTURE FOCUS T219
YON BURGESS W361
#*BALDRIDGE WAYLON W34
BASIN JOY 6278
#*CONNEALY FINAL PRODUCT
TIMBERLAND AAF TOTAL 459

\$M
+49
\$W
+67
\$F
+102
\$G
+43
\$B
+145
\$C

CED	BW	WW	YW	SC	HP	MILK	CLAW	ANGLE	CW	MARB	RE	\$C
+1	+3.1	+81	+148	+1.12	+11.9	+25	+60	+57	+64	+58	+49	+237

- Will calve before sale day to SFCC TRM SHERMAN 2211.
- This proven female offers massive genetic predictors for weaning and yearling weight.
- Posts progeny ratios of 1@95 for BW and 1@103 for WW.
- Ranks in the top 4% for YW; top 10% for CW and WW; top 25% for \$W and \$F.

ANGUS SPRING COW/CALF PAIRS



SFCC TRM LADY TERRITORY 0005
Full sister to Lot 124



SHAW LADY FINAL PRODUCT 4164
Dam of Lot 124

124	SFCC TRM LADY TERRITORY 0008												\$M
cow	DOB 1/9/20	AAA +*19983574	TATTOO 0008										+60
	#**S A V RESOURCE 1441 *S A V TERRITORY 7225 SHAW *S A V EMBLYNETTE 3293 #**CONNEALY FINAL PRODUCT LADY FINAL PRODUCT 4164 SHAW LADY BANDWAGON 9050W												\$W
	#RITO 707 OF IDEAL 3407 7075 *S A V BLACKCAP MAY 4136 #*S A V 004 DENSITY 4336 *S A V EMBLYNETTE 7411 *CONNEALY PRODUCT 568 #EBONISTA OF CONANGA 471 #L T BANDWAGON 3105 SHAW LADY ALLIANCE 551R												\$F
													+90
													\$G
													+46
													\$B
													+136
													\$C
													+236
	CED	BW	WW	YW	SC	HP	MILK	CLAW	ANGLE	CW	MARB	RE	
	-2	+1.4	+72	+127	+15	+14.7	+28	+68	+60	+52	+52	+85	

- Will calve before sale day to SFCC TRM SHERMAN 2211.
- Lot 124 is a direct daughter of 4164, our \$14,500 selection from the 2016 Shaw Female Sale that has become a staple member of our donor herd.
- A flush sister to Lot 124 was selected by Roland Starnes from the 2022 Dixieland Delight Sale, and a maternal sister was the \$10,500 half interest selection of Wheeler Farms from the 2019 Dixieland Delight as the lead Angus lot in that offering.
- Dam posts progeny ratios of 4@87 for BW, 4@105 for WW, 2@104 for YW, 8@102 for IMF and 8@103 for RE.
- Ranks in the top 15% for \$W; top 20% for RE, WW and YW.

125	CES FOREVER LADY X111												\$M
cow	DOB 1/14/21	AAA 20221477	TATTOO X111										+47
	#**BASIN PAYWEIGHT 1682 *V A R SIGNAL 7244 **PF CC&7 HENRIETTA PRIDE 1044 #**S A V RAINDANCE 6848 YORK FARMS FOREVER LADY 1901 YORK FARMS FOREVER LADY 1361												\$W
	#**BASIN PAYWEIGHT 006S 21AR O LASS 7017 #*SYDGEN C C & 7 **SITZ HENRIETTA PRIDE 643T #**COLEMAN CHARLO 0256 *S A V BLACKCAP MAY 4136 #**S A V ANGUS VALLEY 1867 *PINE RIDGE FOREVER LADY N169												\$F
													+91
													\$G
													+24
													\$B
													+116
													\$C
													+197
	CED	BW	WW	YW	SC	HP	MILK	CLAW	ANGLE	CW	MARB	RE	
	+7	+1.2	+73	+129	+79	+10.5	+26	+47	+47	+47	+10	+36	

- Will calve before sale day to SFCC TRM SHERMAN 2211.
- Offers a solid EPD spread from BW to YW.
- Dam records 1@99 for BW.
- Ranks in the top 15% for Doc.

126	SFCC TRM LADY 9007												\$M
cow	DOB 1/17/19	AAA 19646857	TATTOO 9007										+54
	#**SUMMITCREST COMPLETE 1P55 #*KM BROKEN BOW 002 #SUMMITCREST PRINCESS OP12 #**MAR INNOVATION 251 SHAW LADY INNOVATION 691 SHAW LADY NET WORTH 0279W												\$W
	#C F RIGHT DESIGN 1802 SUMMITCREST ELBA 1M17 BASIN AMBUSH 8161 #SUMMITCREST PRINCESS 2J10 #**CONNEALY IMPRESSION #**MAR FINAL KAHUNA 856 #S A V NET WORTH 4200 WF SUNSET K456 N711 P944												\$F
													+87
													\$G
													+57
													\$B
													+145
													\$C
													+242
	CED	BW	WW	YW	SC	HP	MILK	CLAW	ANGLE	CW	MARB	RE	
	+6	-0.1	+73	+119	+76	+8.6	+25	+44	+48	+43	+73	+63	

- Will calve before sale day to SFCC TRM SHERMAN 2211.
- Posts a progeny ratio of 1@107 for WW.
- Dam posts progeny ratios of 3@97 for BW and 2@103 for WW.
- Ranks in the top 10% for \$W; top 20% for BW and WW; top 25% for Claw.

Thank you for your interest in what we've been doing since 1981!

If we can help you in any way, please don't hesitate to call us.



Randy & Kelly Owen, owners
 John, Randa, Harper & John Owen Starnes
 John (256) 996-5559 • Randa (256) 996-5545
 Roland & Janet Starnes • Roland (706) 601-0800
 Email: cattle@tennesseerivermusic.com
tennesseerivermusic.com

Do it with Passion...



...or not at all!



LOOKOUT MOUNTAIN GENETICS

A CUSTOM COLLECTION FACILITY



LOOKOUT MOUNTAIN GENETICS, LLC

is located in Northeast Alabama atop Lookout Mountain, and we are here to serve all of your custom bull collection needs.

We package 40 million cells per unit... every bull, every customer!

- Bull Housing
- Semen Collection
- Semen Storage and Distribution

At Lookout Mountain Genetics, the safety and health of animals entering and boarding at our facility are our No. 1 priorities. We strive to maintain a clean, comfortable housing environment with an emphasis on an optimal nutritional program suited for the reproductive performance of bulls.

Please feel free to contact us anytime regarding your semen collection, storage and distribution needs.

200 Valhalla Road SE, Fort Payne, AL 35967

Phone: (256) 845-2530

John Starnes: (256) 996-5559

Email: info@lookoutmountaingenetics.com

www.lookoutmountaingenetics.com



OUR CATTLE RANCH consists of Angus and Hereford genetics, with an emphasis on quality in all facets, from pasture to rail. The cattle spend the majority of their lives grazing lush, green grass before being finished on a grain-based ration to maximize marbling and taste. We strongly believe the key to quality meat is comfortable, respected and humanely-raised animals. High-quality animals yield a high-quality product. We have a deep love and respect for agriculture, our community, our livestock and the land that has been passed down for generations here in Northeast Alabama.

The Market at TRM was created as a way to share our locally-sourced beef with the community. Our dream has long been to bring to families the same homegrown, healthy beef that our families have been enjoying for decades. We believe in all aspects of the cattle industry, and we admire and respect the versatility of the beef animal in all that it provides. We appreciate the opportunity to join you and your family at the dinner table!

5053 County Road 255, Fort Payne, AL 35967

Phone: (256) 996-5545

Email: TheMarketatTRM@gmail.com





Tennessee River Music

Registered Herefords & Angus

553 Randy Owen Dr. NE

Fort Payne, AL 35967

FIRST CLASS MAIL

Time Sensitive: Please Do Not Delay

PRE-SORTED
FIRST CLASS
U.S. POSTAGE
PAID
SLATE GROUP

tennesseerivermusic.com



DIXIELAND DELIGHT

Red, White & Black
ANGUS & HEREFORD PRODUCTION SALE

05.03.2025



Featuring the first progeny and the service of
ASM 405B RED MAN 325L ET