

NATIONAL WESTERN *Hereford Sale*



1.16.26
HEREFORDS
in the yards



46TH ANNUAL PRODUCTION SALE MONDAY, FEBRUARY 23, 2026 12:30 PM AT THE RANCH IN BRUNEAU, IDAHO



LOT 83

AHA 4461222
DOB 8/15/24

CED -3.2
BW 3.5
WW 73
YW 115
MH 42
REA 0.95
MARB 0.50
CHB 190

C 1030 DENALI 4367 ET

His outstanding CHB values combined with his BMI make him an exceptional breeding prospect. He brings together several of the leading cow families in our program.



LOT 15

AHA 44650303
DOB 1/30/25

CED 4.3
BW 1.7
WW 71
YW 115
MH 26
REA 1.09
MARB 0.32
CHB 186

C 79H DOMINO 5024 ET

A top maternal bull with impressive stats, and a 1/2 brother to last year's highest seller.



LOT 48

AHA 44650410
DOB 1/7/25

CED 9.7
BW 1.1
WW 70
YW 109
MH 52
REA 0.35
MARB 0.42
CHB 151

C CUDABELLE 5152

This bull presents an excellent choice as a calving ease herd sire, originating from a first-calf heifer sired by Guardian.



LOT 124

AAA 21236996
DOB 1/7/25

CED 2.1
BW 4.1
WW 91
YW 148
MILK 25
REA 1.22
MARB 1.29
SC 372

CCC 2155 AMBITIOUS 5013 ET

You can see the extra growth and performance in this bulls phenotype and it is reflected in his numbers. He also really excels in carcass traits. Dam is a top young donor.



LOT 14

AHA 44650299
DOB 1/15/25

CED 4.7
BW 2.8
WW 76
YW 126
MH 37
REA 0.80
MARB 0.39
CHB 185

C 8140 LEGION 5020 ET

This is a bull that is undoubtedly right for the times and a genuine herd bull prospect in every way. When you consider his numbers, it's impressive to see a bull with his stats that still maintains the phenotype suited for the future.



LOT 43

AHA 44650400
DOB 1/22/25

CED 4.3
BW 4.0
WW 88
YW 139
MH 30
REA 0.91
MARB 0.53
CHB 170

C REIGN MAKER 5141

We believe he is among the best herd sire prospects we've ever presented. He embodies all aspects of our program, being backed by generations of top performing cow families.



LOT 172

AAA 21237121
DOB 1/16/25

CED -3
BW 3
WW 85
YW 141
MILK 22
REA 0.62
MARB 1.06
SC 381

CCC REPUBLIC 5163

Here is a moderate framed, high-volume bull with lots of rib shape. Easy fleshing and excels in foot shape and structure.



LOT 197

AAA 21100325
DOB 8/25/24

CED 12
BW -0.4
WW 78
YW 145
MILK 14
REA 0.51
MARB 1.18
SC 329

CCC PACIFIC 4225

Calving ease bull that doesn't sacrifice growth and carcass. Super profile, big topped and stands down on a lot of bone. Top 20% for Marbling and Ribeye.



LOT 170

AAA 21237115
DOB 1/16/25

CED 1
BW 3.8
WW 100
YW 170
MILK 19
REA 0.95
MARB 0.76
SC 327

CCC PROLIFIC 5157

A wide based bull with extra muscle expression. Chart topping foot scores and he sure is true on his feet and legs. Awesome growth numbers.



31058 COLYER ROAD • BRUNEAU, ID 83604
208-845-2313 • GUY CELL: 208-599-0340 • KYLE CELL: 208-250-3924
GUY@HEREFORD.COM • WWW.HEREFORD.COM

SELLING 250

HORNED HEREFORD, POLLED HEREFORD AND ANGUS BULLS & 45 FEMALES
BULLS DEVELOPED FOR THE COMMERCIAL CATTLE INDUSTRY. BREED LEADING EPDS
AND PERFORMANCE FOR THOSE SELLING CATTLE BY THE POUND.

VIEW & BID ON LIVEAUCTIONS.TV

LiveAuctions.TV

Dear Hereford Breeders and Enthusiasts,

Welcome to the National Western Hereford Sale "Herefords in the Yards." One of the most talked about subjects over the past four years is the excitement and optimism of the new Yards at the National Western. As the numbers of Hereford Yard cattle surges for the fourth straight year, the very best the Hereford breed has to offer will be at the National Western Stock Show. In addition, we are blessed with the new Legacy Center right next door, so the mecca within our breed will be in Denver in 2026.

For generations, the Yards at the National Western were known as THE place to merchandise and promote the best Hereford genetics found anywhere. This year, breeders from across the United States and Canada have come together to offer the most superior genetics in the breed for this once-a-year event! With over seventy head featured, there is not just one single lot, but each and every lot will appeal to multitudes of Hereford breeders looking to move their programs to new heights.

The bulls and females presented in this catalog represent some of the finest genetics available today in the entire breed. They are the type of genetics that can make an immediate impact in a lone generation in any program coast to coast. In addition to the live lots, we are offering some "pick of the herds" that represent the type of elite genetics that aren't available anywhere at any time. The revenue potential that exists in this sale offering is second to none, and the impact these genetics make in the breed will be felt for generations.

In 2025, we saw demand for the elite genetics within the Hereford breed reach levels unseen in generations. In 2026, this will continue to thrive, and the time to invest is right now.

We wish to invite you to the 2026 National Western Hereford Sale. If you are unable to make it to Denver, the sale will be broadcast on CCI.LIVE. If you have any questions about the sale offering, please contact myself, the sale consultants, or any member of the sale staff.

Welcome to the National Western ... welcome to the Yards.

Justin B. Stout

Sale Sponsor:

Colorado Hereford Association

Sale Manager:

Justin B. Stout Auction Service, LLC

15508 Woodward St.

Overland Park, KS 66223

913-645-5136

jbs5356@hotmail.com

Auctioneer:

Justin B. Stout 913-645-5136

Sale Consultants:

Matt Caldwell 913-755-1105

Sale Staff:

Kane Aegerter, *Hereford World* 402-641-8699

Aaron Freidt, *Hereford World* 701-590-9597

Emilee Holt, *Hereford World* 208-965-3130

Austin Brandt, *Hereford World* 712-621-1829

Guy Peverley, *The Stock Exchange* 785-456-4390

Logan Ipsen, *Western Livestock Journal* 916-947-2392

Alan Sears, *Western Ag Reporter* 970-396-7521

Hereford Hotel Headquarters:

Renaissance Denver Central Park 303-399-7500



Bid Live: Can't make the sale? Watch it live and bid in real time on CCI.LIVE

Terms of Sale: The terms of the sale are cash or check payable at the close of the sale and prior to load out unless previous arrangements have been made with the owner or sale manager. Animals will be sold to the highest bidder with the auctioneer settling any disputes.

NATIONAL WESTERN *Hereford Sale*



Friday, January 16, 2026

National Western Livestock Show

Wagner Equipment Sale Arena

2:30 p.m. Sale Preview

(or immediately following Hereford Pen Show)

4:00 p.m. Sale

Announcements at the sale by the owner, sale manager or auctioneer will take precedence over statements in the catalog. Each animal becomes the buyer's risk as soon as sold but will be cared for by the seller until load out or for a reasonable period of time. All transactions will be in U.S. dollars.

Guarantee: All cattle will sell under the suggested terms and conditions of the American Hereford Association.

Health: Health of the consignments is excellent. Individual health papers will be furnished for shipment in the United States. All animals become the property of the purchaser at the time of sale, and we strongly recommend that you insure your purchases. Bulls over one year of age have been fertility tested and will guarantee semen to freeze. Bulls have been trich tested. All sale cattle are P.I. tested negative.

Insurance: Sheila Jensen 785-262-1116

Delivery: Delivery costs and arrangements of sale animals are the responsibility of the purchaser. Sale personnel, consignors, exhibitors, and various reputable trucking firms will be on hand to assist with transportation arrangements.

Performance information: All EPDs are current according to the official AHA record as of December 1st, 2025, and are subject to change.

Payment: Payment for each lot in the 2025 Herefords in the Yards Sale is to be immediately after the sale. The buyers who choose to be billed need to make payment as soon as possible after the sale. Interest will be accrued on unpaid balances starting on March 1st, 2026, at the rate of 1.5% per month, 18% annually.

Note: All persons who attend the sale do so at their own risk. Neither the National Western Livestock Show, the owner(s) nor the sale manager assume liability, legal or otherwise, for any accidents which occur.



1 | TOPP HEREFORDS CHOICE OF THE COWHERD

A lot that has become a staple to lead off this sale since it began, the choice of the cowherd from Topp Herefords has been one of the most sought-after offerings of any auction ... as it should be! No longer are you buying a pick of bred heifers, but you're buying the opportunity to select ANY cow on the ranch!

That's right, you're the buying the opportunity to make the trek to Grace City, open any gate Topp Herefords has and pick your choice of the maternal battery that is responsible for one of the top performing bull sales, of any breed, anywhere in North America. Everything from the newest bred heifers, to proven herd sire producers is on the table. Topp's maternal battery is bred for and focus on one primary goal ... raising commercial bulls.

They believe that a true Seedstock operation's commitment is to develop genetics that ultimately drive the meat industry forward. Their success is measured by their contribution to the sustainability of our commercial cow-calf customers.

The cow herd is built on a foundation of four core values: udder quality, soundness, fertility, and pounds. The structure by which they analyze these traits may be called old-fashioned by some. However, the process is real and exceptionally ruthless.

Udder quality is determined at calving time by a simple 1-2 grading system. A 1 is great and a 2 is a cull. Soundness is determined during spring vaccination season. A female with a cracked foot, bad joints, poor disposition or hard-doing is sorted off and not even bred. Fertility sorts itself out quickly with a 45-day breeding season. Finally, pounds weaned. If they don't bring in a heavy calf, there is a pretty good chance she won't be calving there next Spring. To round out the selection process, Ryan & Prairie have been DNA testing since 2013 to provide parentage, identify genetic defect status and increase the accuracy of EPDs.

Between the heifers and cows, there are over 1200 bred females at Topp Herefords. For this selection, the majority of these will be calved out, so the winning bidder will have the opportunity to select from any cow with a heifer calf or any yearling bred heifer!

Selection is to be determined between May 1 and May 15, 2026.



Topp Herefords
Ryan and Prairie Topp
1157 83rd Ave. N.E.
Grace City, ND 58445-9240
Office 701-674-3152 • Ryan cell 701-652-5701
info@toppherefords.com



C BAR ONE 1326 BAILEE 0226 ET



C BLACK HAWK LASS 8019



C 8140 LADY 7057 HAWK 1262 ET



C BAR1 BAILEES DOUBLE MILES ET

2 | COLYER HEREFORDS CHOICE OF FALL 2025 CALF CROP

When you think of the National Western, Colyer Herefords goes hand in hand. They have been perhaps the most triumphant program, dating back to the '80s with their first National Champion, L1 Pacesetter, who went on to become a foundation Herd Sire in the breed.

Without a doubt Colyer's are one of the long standing, most successful programs in the nation. When you look at the number of walking herd sires combined with the popular AI sires, the influence of the Colyer program is second to none. With the growth of their Fall Female Sale, the Colyer female has become one of the most coveted assets in the entire breed.

In what has become tradition on the grand stage in Denver, Colyer Herefords is offering Choice of Fall 2025 Calf Crop. There are nearly 100 calves to choose from with 60 of them ET progeny out of the leading donors walking in Bruneau, including:

- C Bar One 1326 Bailee 0226 ET - 2022 NWSS National Champion
- C Black Hawk Lass 8019 - Dam of Key West
- C Bar1 Bailees Double Miles ET - past National Champion & \$99,000 top seller
- C 8140 Lady 7057 Hawk 1262 ET - past top selling female with curve bending numbers

- EXR Leanne 1037 - Outcross Benchmark daughter with exceptional EPD spread
- C 4038 Canada Lass 8257 ET - beautiful uddered 4038 daughter

The sires that are represented in this pick are some of the greatest bulls in the breed today:

- C GKB GUARDIAN 1015 ET
- C DENALI HD 2105 ET
- C CUDABELLE 2111
- SHF LEGION H315 L060
- ECR WHO MAKER 210 ET
- C BLACK HAWK DOWN
- WALKER FULL CIRCLE 3511 ET
- LAND SHR MANHATTAN 2029 ET
- C REIGN MAKER 3210 ET

Buyer will receive listing of GE-EPDs on the entire calf crop to assist in selection.



C DENALI HD 2105 ET



C CUDABELLE 2111

Colyer
HEREFORDS & ANGUS

31058 Colyer Rd., Bruneau, ID 83604
Guy 208-599-0340 • Kyle 208-250-3924
www.hereford.com



3 | COYOTE RIDGE RANCH CHOICE OF 2026 HEIFER CALVES

Coyote Ridge Ranch has evolved into one of the preeminent programs in the Hereford breed. Look no further than their recent results right here at the National Western where they've been selected the Grand Champion Pen of Bulls 8 times, most recently in 2020, 2022 & 2024. Last year, their bull pen was Reserve Champion Pen of Three, and one of the more talked about pens in all of Denver.

CRR is a three-generation family operation located on the high plains of Colorado in the shadow of the Rocky Mountains. Hampton & his family run a real-world western range program with a proven track record of calving ease, maternal efficiency and superior growth backed by 40 years of actual performance records and dam production records. A program truly built for today's beef industry with performance documented over 15 years of retained ownership and feedlot data on CRR steers. The cowherd consists of dependable problem free cows that work for a living.

This is a lifetime opportunity to step in and select your favorite heifer on the place born in 2026. CRR will calve over 175 pairs beginning in February, with over 75% confirmed AI bred. In addition to that outstanding lineup of pasture herd sires CRR is known for, you'll have to opportunity to select progeny sired by some of the leading AI bulls today:

- BAR JZ ON DEMAND
- CHURCHILL RED CLOUD 0376H ET
- /S LONG HAUL 11443
- CRR 156J WIND RIVER 347- Lead bull in 2024 NWSS Champion Pen of Three
- CRR 0016 PUNCH 338 ET
- CRR 0016 SARATOGA 380 ET FR COUNTY LINE 3522 ET
- NJW 283H 2912 STANDARD 130M ET

Selection must be made by September 1st, 2026. GE-EPDs will be provided to assist buyer.



Coyote Ridge Ranch
18300 Co. Rd. 43
LaSalle, CO 80645
Jane Evans Cornelius
cell 970-371-0500
Hampton and Kay
cell 970-396-2935
www.coyoteridgeherefords.com

4 | NJW POLLED HEREFORDS CHOICE OF NEW STANDARD SPRING BRED HEIFERS

With the fifth edition of this event we are extremely excited to feature perhaps one of the most exciting lots ever to be featured from the Ned & Jan Ward program. One of the most exciting young herd sires in the breed today is walking the pastures near Sheridan, WY ... Birdwell New Standard 2912 ET. A son of possibly the breed's most highly regarded cows, 7098, as a coming four-year-old he has established himself as a breeding tool that combines and is backed by the highest values for carcass traits, fertility and udder quality.

Sound in his structure, he's homozygous polled and a 13-trait leader in his EPD makeup. This past spring, New Standard's first sons were the top 5 selling bulls at NJW, averaging \$45,700!

This lot features a total of 12 New Standard daughters to choose from. Among them is an ET daughter of NJW 160Z 8Y Home Maker 202C. This donor is at the forefront of the NJW program, along with her 13-year-old dam, 160Z, and 19-year-old grandam, 73S! 202C is 10 years old and as sound, beautiful and productive as ever. A full brother to these two bred heifers was the top selling NJW bull in 2025 for \$90,000, along with a yearling full sister for \$42,500. At their 2024 sale, another full sister was the \$35,000 pick of the heifer calves.

Another highlight are Four ET daughters by NJW 79Z 9116 Rita 283H ET. A half-sister to Endure, she is the top 79Z daughter that has taken her mother's place at NJW. Her sons and daughters are equally as good and always at the forefront of that year's calf crop. Two full brothers to these bred heifers sold for \$34,000 and \$32,000 in 2025. This only highlights the ET options of this pick as there are still 7 other prospects to select from!

Ned & Jan have never before offered something of this caliber. These 12 bred heifers represent the future of the NJW program. They are offering the opportunity to come in and pick one to make you own! If that doesn't sound sweet enough, this lot gets even better ... the heifers begin calving immediately following the National Western, so you will be selecting a pair! The next cornerstone donor in this breed, combining the proven maternal excellence of NJW with one of the most exciting young sires in the breed ... the first chance to acquire a NJW New Standard daughter entering production.

NJW would like the buyer's pick to be selected by their Annual Bull & Female Sale, March 25th, 2026.



NJW Polled Herefords
Ned (c) 307-751-8298
Jan (c) 307-751-9470
Bell Ward (c) 307-751-6922
Ben Holt (c) 208-546-2310
P.O. Box B Sheridan, WY 82801
njwardherefords@gmail.com



Scan to view individual heifer videos



NJW 176K 2912 STARDUST 16M



NJW 72E 2912 HOMESPUN 165M



NJW 202C 2912HOMEMAKER 143M ET



NJW 283H 2912 RITA 132M ET



NJW 283H 2912 RITA 118M ET



NJW 147J 2912 HARMONY 41M





HH MISS ADVANCE 0001H



HH MISS ADVANCE 8237F



HH MISS ADVANCE 0003H



0003H SON 5198N ET — 1 full sister in pick



HH ADVANCE 5113N ET — 1 full sister in pick

5 | HOLDEN HEREFORDS CHOICE OF YEARLING HEIFERS

For generations upon generations, the foundation of the Hereford breed is built upon the maternal greatness of the Line One cow. Since Les Holden bought his first bull in 1947, the Line One cowherd in Valier has been line bred and developed with emphasis on maintaining moderate birth weights while adding performance, milk, thickness, carcass strength and predictability. With an average in breeding co-efficient of about 25%, the outcross potential in these genetics is the equivalent of cross breeding between breeds. When using a Holden bred animal, you take advantage of generation upon generation of top-quality genetics with balanced trait selection that maximizes revenue potential.

Now, Jack is opening his gates to his most precious commodity ... his replacement heifers. One buyer will have the opportunity to make the trip to the rolling plains of north central Montana and take his or her pick from over 85 yearling heifers. 35 of these are ET heifers from some of the highest revenue generating females in the Hereford breed today.

To highlight a couple options of this lot, there is one full sister to what Jack considers as his best flushes ever produced, out of the HH Miss Advance 0003H donor, the dam of HH Advance 2106K and HH Advance 4265M herd sires. Sired by HH Advance 1128J ET, she sports a 0.32 MARB, \$197 CHB & \$482 BMI. Her ET brothers will be a huge highlight in the upcoming 60th Annual Production Sale for Holden.

Another highlight is a pair of maternal sisters to HH Advance 0022H and another feature flush of bull for Jack's bull sale sired by CI 1 Domino 241K. These heifers are sired by CI 1 Domino 3262L and offer high calving ease, elite growth and high carcass indexes. Also included in this choice lot are two ET heifers that are maternal sisters to HH Advance 4056M, the \$70,000 bull that sold to Barber Ranch, GKB Cattle and Colyer Herefords in 2025.

We've only begun to hit the highlights and potential of this choice. As more and more commercial bull buyers are counting on a "White Face" to rebuild the nation's cowherd, demand for maternally focused Hereford bulls continues to see the type of demand unseen in decades. This choice of a future L1 donor from Holden Herefords gives any Hereford program that rock solid foundation in which to supply those bulls.

Jack asks that selection be made by April 1st. GE-EPDs will be supplied to aid in buyer's selection.

Holden Herefords

Holden Herefords
Jack & Tresha Holden
3139 Valier Dupuyer Rd
Valier, MT 59486

406-279-3301
Jack Cell: 406-450-1029
Jay D Evans: 406-450-0129
Brad Holden: 406-590-3307
Eric Lawver 406-600-3118



JDH AH GUNSLINGER 40N ET

6

JDH AH GUNSLINGER 40N ET (DLF,HYF,IEF,MSUDF,MDF,DBF)

P44668495 | Calved: 1/24/25 | Tattoo: BE 40N

JDH AH BENTON 8G ET (CHB)(DLF,HYF,IEF,MSUDF,MDF,DBF)

STELLPLUG GUNSMOKE 222 ET (DLF,HYF,IEF,MSUDF,MDF,DBF)

P44400396

NJW 202C 4013 HOMEMAKER 90H ET (DLF,HYF,IEF,MSUDF,MDF,DBF)



JDH AH LINCOLN 106H ET (CHB)(DLF,HYF,IEF,MSUDF,MDF)

JDH AH 8032 MS LINCOLN 125L ET (DLF,HYF,IEF,MSUDF)

P44458183

RST MS X651 TESTED 8032 (DLF,HYF,IEF,MSUDF,MDF,DBF)

CE	BW	WW	YW	DMI	SC	SCF	MM	M&G	MCE
1.2	2.8	81	131	0.5	1.5	22.1	30	71	0.2
MCW	UDDR	TEAT	CW	FAT	REA	MARB	BMIS	BIIS	CHBS
124	1.50	1.60	111	0.034	0.99	0.23	502	609	186



JDH AH 8032 MS LINCOLN 125L ET

We are coming to the Mile High City with our guns blazing! Gunslinger's pedigree is packed with the best bulls and females from our program in recent years. Cows like: 45C, dam of herd bulls; 19Z, mother of donors and herd bulls across the country; and 8032, dam of Final Print. Plus sires that are leaving their mark on the breed: Benton, Lincoln and 33Z. Combine that with the fact that his sire is one of the hottest young bulls in the country and Gunslinger offers you the latest genetics, backed by generations of proven, working cattle and great uddered females.

Gunslinger is Homozygous Polled and one of the highest performing bulls we have ever raised with a 205-day weight of 868 lbs. He is soft made, deep sided, with an excellent set to his feet and legs plus great thickness. Top that off with a set of EPDs that combine acceptable BW with growth in the top 1% of the breed and 10 traits in the top 6% of the breed.

His mother, 125L, topped our fall 2023 sale as a heifer calf with ½ interest going to Ollerich Brothers Herefords. She not only gave us an outstanding set of ET calves, but as a 2-year-old she raised her natural calf with a BW ratio of 96 and a WW ratio of 108. Like other Lincoln daughters, she has a beautiful udder and she may well be the next cornerstone donor of our program. With all of the great producing, great uddered females in his pedigree, Gunslinger should leave a great set of females plus have the ability to sire bulls with power and agility. We think the sky is the limit for Gunslinger and we look forward to using him in our program.

We are offering 1/2 interest and full possession in Gunslinger. We will retain full 1/2 revenue sharing semen interest.



Atkins Herefords
27132 SD Hwy. 17
Tea, SD 57064
Pete Atkins 605-351-9847
petea15@gmail.com
www.atkinsherefords.com



Jerry and Shelly Delaney Family
2071 Co. Rd. 101
Lake Benton, MN 56149
Jerry Delaney 507-820-0661
jdh@delaneyherefords.com
www.delaneyherefords.com



DVOR 106H 2187 LIN 4013M ET

7 DVOR 106H 2187 LIN 4013M ET {DLF,HYF,IEF,MSUDF,MDF,DBF}

P44671025 | Calved: 12/12/24 | Tattoo: LE 4013

JDH VICTOR 719T 33Z ET {SOD}{CHB}{DLF,HYF,IEF,MSUDF,DBF}

JDH AH LINCOLN 106H ET {CHB}{DLF,HYF,IEF,MSUDF,MDF}

P44148953

AH MS 25L RUMBLER 19Z {DOD}{DLF,HYF,IEF,MSUDF,DBF}



SR EXPEDITION 619G ET {DLF,HYF,IEF,MSUDF}

DVOR 619G 013 LADY FRONT 2187K {DLF,HYF,IEF,MSUDF}

P44365994

DVOR 174E 8212 LADY FRONT 013H {DLF,HYF,IEF,MSUDF}

CE	BW	WW	YW	DMI	SC	SCF	MM	M&G	MCE
5.2	2.8	74	120	1.0	1.5	21.7	37	74	3.5
MCW	UDDR	TEAT	CW	FAT	REA	MARB	BMIS	BIIS	CHBS
98	1.60	1.60	93	0.054	0.71	-0.01	437	523	121



DVOR 619G 013 LADY FRONT 2187K

For the first time Boyd, Jeff and the crew at Dvorak Herefords are bringing a carload to the National Western and are offering their lead bull in this sale. Dvorak has developed and become regarded as one of the top cowherds in the country, and with their acquisition of great walking sires such as Final Print, Land Grant, Lincoln and Expedition they've developed into one of the most progressive herds anywhere. This fall born herd sire prospect represents the next in line of maternal prospects backed by a tremendous cowherd.

Backed by the one of the all-time legend cows, 19Z, Lincoln sons have seen some of the highest demand the past two years. With the limited number of Lincoln sons available in the country, this is one of the best opportunities to acquire one.

His Expedition dam was a performance powerhouse that individually ratioed 125 for WW, 114 for YW, 130 for REA and 114 for IMF. Unfortunately, she passed as a two-year-old, but luckily Boyd flushed her as a yearling so her genetics can still make a big impact on the Dvorak program. Last year at this sale, a maternal sister to Lin 4013M brought \$23,000 for half interest.

Lin 4013M offers a set of curve bending EPDs for growth and maternal traits around a calving ease in the top third of the breed. He ranks in the top 1% of the entire breed for UDDR, TEAT and MG and the top 3% for WW and YW. All told, he has 8 traits ranking in the top 10%. Of the 144 Lincoln sons on record, Lin 4013M ranks #3 with his combination of CE, WW and YW.

Herd sire prospects with this much growth and maternal in addition to good calving ease aren't easy to find in the country. Add into that a proven, data driven cowherd behind him and the task becomes near impossible. You'll find that very thing at the front end of the Dvorak Carload of Bulls at the National Western!

DVORAK
HEREFORDS

Dvorak Herefords
30161 387th Ave.
Lake Andes, SD 57356
Boyd 605-491-7090
Jeff 605-491-2068



OCC CHIEF 501

8 | **OCC CHIEF 501** {DLF,HYF,IEF,MSUDF,MDF,DBF}
44698383 | Calved: 2/2/25 | Tattoo: LE 501

BR CSF COPPER ET {DLF,HYF,IEF,MSUDF}
ECR COPPER CANDI 1333ET {DLF,HYF,IEF,MSUDF,MDF,DBF}
44296201 ECR CANDI 5451 ET {DLF,HYF,IEF,MSUDF,MDF,DBF}



TFR KU ROLL THE DICE 1326 {CHB} {DLF,HYF,IEF,MSUDF,MDF,DBF}
ECR LADY TOT 0101ET {DLF,HYF,IEF,MSUDF,MDF}
44281081 JCS TATER TOT 3560 {DLF,HYF,IEF,MDF,DBF}

CE	BW	WW	YW	DMI	SC	SCF	MM	M&G	MCE
-1.6	5.4	65	105	0.4	0.9	15.1	32	65	-3.7
MCW	UDDR	TEAT	CW	FAT	REA	MARB	BMS	BIS	CHBS
88	1.20	1.10	96	0.044	0.84	-0.18	348	408	120



ECR COPPER CANDI 1333ET



MCKY MONROE 8688 ET

From the Eastern front in South Dakota, Ollerich Cattle Co. is making their first ever appearance in this event with a big-time herd sire prospect! Chief is the type of bull that will leave his mark on this breed, siring some of the fanciest, most stylish show heifers with power and muscle. His sons will also add growth, power and muscle.

Chief is a product of some of the most royal pedigrees you'll find anywhere. His sire, Copper Candi, was the 2022 Reserve Champion Horned Bull here at the National Western. From there he has sired many high selling daughters and sons for Fawcett and Cane Creek Cattle Co. His dam, Candi 5451, has been a proven matriarch in this breed, as a former Reserve National Champion herself here at Denver, as well as winning JNHE.

Ryan purchased Chief's dam as a baby from Fawcett's with the plan to breed show heifers for his daughter. His dam is a daughter of one of the most proven maternal producers in the breed, JCS Tater Tot 3560. She herself was Grand Champion Horned Female at the NWSS, and from there she's gone on to produce daughters that have their way to the backdrop at National shows across the land ... most recently a division winning daughter at the 2025 Cattlemen's Congress. Perhaps Tater Tot's most decorated daughter is a full sister to Chief's dam, MCKY Monroe 8688 ET. She was the Grand Champion Horned Female in 2020 at Fort Worth Stock Show in addition to winning the Junior show at the National Western that same year and has gone on to be a tremendous revenue generating female in her own right.

Chief brings extra muscle and shape, and to quote Ryan, "extra rib depth with more curve than J. Lo!" He's got a perfect back leg, soft haired and has a puppy dog disposition. In the business of breeding and raising show heifers, everyone is on the lookout for that next great one. He will be standing in the Yards this year at the National Western. Look for him in Fawcett's stalls.



Ollerich Cattle Co.
Clear Lake, SD 57226
Ryan and Crystal Ollerich
Devon, Kirbee and Weston

For the first time, the boys from Glenham are bringing a Carload to the NWSS! One thing that always stands out from Cane Creek is the continued impact the foundation donors like the "Mother of Herd Bulls", 45C and Mercedes, continues to make. These cows continue their impact on this breed, as last year's \$31,000 pick of the CCCC pen was a 45C son, CCCC Chisum, that sold to Canada.

This year's Carload features the first three sons of their newest donor, CCCC Katie 258K ET. She is a full sister to EXR Generator 0333, and half interest in her sold in 2023 to Bowling Ranch. She is poised to take 45C's place as the most impactful cow at Cane Creek. Study your lesson, examine the data on this Carload as it will be one of the highlights of the entire National Western.



9A | CCCC NEW STANDARD 258K 510N ET {DLF,HYF,IEF,MSUDF,MDF,DBF}

P44703549 | Calved: 3/12/25 | Tattoo: BE 510N

KCF BENNETT RESOLVE G595 (CHB) {DLF,HYF,IEF,MSUDF,MDF,DBF}

BIRDWELL NEW STANDARD 2912 ET (CHB) {DLF,HYF,IEF,MSUDF,MDF,DBF}

P44358760

BR VALIDATED B413 6035 7098 (DLF,HYF,IEF,MDF,DBF)

LOEWEN GENESIS G16 ET (CHB) {DLF,HYF,IEF,MDF,DBF}

CCCC KATIE 258K ET (DLF,HYF,IEF,MSUDF,MDF,DBF)

P44373341

C BAILEES MCKEE 4295 ET (MDF,DBF)

CE	BW	WW	YW	DMI	SC	SCF	MM	M&G	MCE
8.0	1.7	61	91	0.2	1.3	25.2	32	62	0.0
MCW	UDDR	TEAT	CW	FAT	REA	MARB	BMI\$	BIIS	CHBS
74	1.45	1.55	90	0.039	1.02	0.60	543	656	193

• Homozygous Polled. GE-EPDs updated sale day.

9B | CCCC SHERMAN 258K 508N ET {DLF,HYF,IEF,MSUDF,MDF,DBF}

P44703547 | Calved: 3/10/25 | Tattoo: BE 508N

KCF BENNETT RESOLVE G595 (CHB) {DLF,HYF,IEF,MSUDF,MDF,DBF}

CHURCHILL W4 SHERMAN 2157K ET (CHB) {DLF,HYF,IEF,MSUDF,MDF,DBF}

P44378036

CHURCHILL LADY 079H ET (DLF,HYF,IEF,MSUDF,MDF,DBF)

LOEWEN GENESIS G16 ET (CHB) {DLF,HYF,IEF,MDF,DBF}

CCCC KATIE 258K ET (DLF,HYF,IEF,MSUDF,MDF,DBF)

P44373341

C BAILEES MCKEE 4295 ET (MDF,DBF)

CE	BW	WW	YW	DMI	SC	SCF	MM	M&G	MCE
7.7	0.7	59	96	0.3	0.9	24.5	29	59	0.0
MCW	UDDR	TEAT	CW	FAT	REA	MARB	BMI\$	BIIS	CHBS
76	1.50	1.60	98	0.064	0.80	0.43	520	621	183

9C | CCCC SHERMAN 11E 522N ET {DLF,HYF,IEF,MSUDF,MDF,DBF}

P44703556 | Calved: 3/18/25 | Tattoo: BE 522N

KCF BENNETT RESOLVE G595 (CHB) {DLF,HYF,IEF,MSUDF,MDF,DBF}

CHURCHILL W4 SHERMAN 2157K ET (CHB) {DLF,HYF,IEF,MSUDF,MDF,DBF}

P44378036

CHURCHILL LADY 079H ET (DLF,HYF,IEF,MSUDF,MDF,DBF)

JDH VICTOR 719T 33Z ET (SOD) {CHB} {DLF,HYF,IEF,MSUDF,DBF}

JDH AH MERCEDES 11E ET (DLF,HYF,IEF,MSUDF,MDF,DBF)

P43835346

AH MS 25L RUMBLER 19Z (000) {DLF,HYF,IEF,MSUDF,DBF}

CE	BW	WW	YW	DMI	SC	SCF	MM	M&G	MCE
-3.0	3.8	67	113	0.1	1.2	16.9	28	62	-1.7
MCW	UDDR	TEAT	CW	FAT	REA	MARB	BMI\$	BIIS	CHBS
137	1.40	1.40	90	-0.016	1.05	0.25	421	510	175

• Homozygous Polled

9D | CCCC ELEMENT 11E 525N ET {DLF,HYF,IEF,MSUDF,MDF,DBF}

P44703560 | Calved: 3/19/25 | Tattoo: BE 525N

KJ TWJ 907E LIBERTY 159H ET (CHB) {DLF,HYF,IEF,MSUDF,MDF,DBF}

KJ 7603 ELEMENT 019L ET (DLF,HYF,IEF,MSUDF,MDF,DBF)

P44474146

BR VALIDATED B413 5064 7603 (DLF,HYF,IEF,MDF,DBF)

JDH VICTOR 719T 33Z ET (SOD) {CHB} {DLF,HYF,IEF,MSUDF,DBF}

JDH AH MERCEDES 11E ET (DLF,HYF,IEF,MSUDF,MDF,DBF)

P43835346

AH MS 25L RUMBLER 19Z (000) {DLF,HYF,IEF,MSUDF,DBF}

CE	BW	WW	YW	DMI	SC	SCF	MM	M&G	MCE
4.0	1.3	65	107	0.4	1.0	19.5	27	59	4.7
MCW	UDDR	TEAT	CW	FAT	REA	MARB	BMI\$	BIIS	CHBS
120	1.50	1.50	77	0.014	0.77	0.21	423	511	140

• Homozygous Polled



Cane Creek Cattle Company
29238 127th Street
Glenham, SD 5761
605-848-3338
canecreekcattleco@gmail.com

9E | CCCC THE GAMBLER 534N ET {DLF,HYF,IEF,MSUDF,MDF,DBF}

P44703561 | Calved: 3/20/25 | Tattoo: BE 534N



KJ TWJ 907E LIBERTY 159H ET (CHB){DLF,HYF,IEF,MSUDF,MDF,DBF}
KJ7603 ELEMENT 019L ET (DLF,HYF,IEF,MSUDF,MDF,DBF)
P44474146 BR VALIDATED B413 50647603 (DLF,HYF,IEF,MDF,DBF)
LOEWEN GENESIS G16 ET (CHB){DLF,HYF,IEF,MDF,DBF}
CCCC KATIE 258K ET (DLF,HYF,IEF,MSUDF,MDF,DBF)
P44373341 C BAILEES MCKEE 4295 ET (MDF,DBF)

CE	BW	WW	YW	DMI	SC	SCF	MM	M&G	MCE
6.1	2.0	68	110	0.6	1.5	11.8	30	64	3.4
MCW	UDDR	TEAT	CW	FAT	REA	MARB	BMI\$	BIU\$	CHB\$
96	1.30	1.30	103	0.064	0.71	0.39	333	433	179

KJ TWJ 907E LIBERTY 159H ET (CHB){DLF,HYF,IEF,MSUDF,MDF,DBF}
KJ7603 ELEMENT 019L ET (DLF,HYF,IEF,MSUDF,MDF,DBF)
P44474146 BR VALIDATED B413 50647603 (DLF,HYF,IEF,MDF,DBF)
JDH VICTOR 719T 33Z ET (SOD){CHB}{DLF,HYF,IEF,MSUDF,DBF}
JDH AH MS 34X VICTOR 33Z45C ET (DLF,HYF,IEF,MSUDF)
P43615978 AH JDH MS 25L WRANGLER 34X ET (SOD){DLF,HYF,IEF}



CCCC THE GAMBLER 534N ET

9F | CCCC ELEMENT 45C 513N ET {DLF,HYF,IEF,MSUDF,MDF,DBF}

P44703550 | Calved: 3/14/25 | Tattoo: BE 513N

CE	BW	WW	YW	DMI	SC	SCF	MM	M&G	MCE
-0.6	3.8	73	114	0.5	1.5	15.6	24	61	1.2
MCW	UDDR	TEAT	CW	FAT	REA	MARB	BMI\$	BIU\$	CHB\$
114	1.50	1.40	97	0.034	0.84	0.47	398	508	185

- Homozygous Polled. GE-EPDs updated sale day.

9G | CCCC ELEMENT 45C 514N ET {DLF,HYF,IEF,MSUDF,MDF,DBF}

P44703552 | Calved: 3/14/25 | Tattoo: BE 514N

CE	BW	WW	YW	DMI	SC	SCF	MM	M&G	MCE
-0.6	3.8	73	114	0.5	1.5	15.6	24	61	1.2
MCW	UDDR	TEAT	CW	FAT	REA	MARB	BMI\$	BIU\$	CHB\$
114	1.50	1.40	97	0.034	0.84	0.47	398	508	185

- Homozygous Polled. GE-EPDs updated sale day.



CCCC ELEMENT 45C 513N ET

9H | CCCC MAVERICK 45C 540N ET {DLF,HYF,IEF,MSUDF,MDF,DBF}

P44703563 | Calved: 3/20/25 | Tattoo: BE 540N



NJW 79Z 231I ENDURE 173D ET (SOD){CHB}{DLF,HYF,IEF,MSUDF,MDF,DBF}
PCC7009 173D MAVERICK 0183 ET (CHB){DLF,HYF,IEF,MSUDF,MDF,DBF}
P44183736 PCC NEW MEXICO LADY 7009 ET (DLF,HYF,IEF,MSUDF,MDF,DBF)
JDH VICTOR 719T 33Z ET (SOD){CHB}{DLF,HYF,IEF,MSUDF,DBF}
JDH AH MS 34X VICTOR 33Z45C ET (DLF,HYF,IEF,MSUDF)
P43615978 AH JDH MS 25L WRANGLER 34X ET (SOD){DLF,HYF,IEF}

CE	BW	WW	YW	DMI	SC	SCF	MM	M&G	MCE
1.2	4.0	72	108	0.5	1.0	23.3	27	62	-1.6
MCW	UDDR	TEAT	CW	FAT	REA	MARB	BMI\$	BIU\$	CHB\$
110	1.50	1.50	113	-0.026	1.39	0.22	527	621	190



CCCC EQUITY 279K 554N ET

9I | CCCC MAKERS MARK 45C 518N ET {DLF,HYF,IEF,MSUDF,MDF,DBF}

P44703554 | Calved: 3/17/25 | Tattoo: BE 518N



BOYD 31Z BLUEPRINT 6153 (SOD){DLF,HYF,IEF,MSUDF,MDF,DBF}
GREEN JCS MAKERS MARK 229G ET (DLF,HYF,IEF,MSUDF,MDF,DBF)
P44042074 JDH AH MERCEDES 11E ET (DLF,HYF,IEF,MSUDF,MDF,DBF)
JDH VICTOR 719T 33Z ET (SOD){CHB}{DLF,HYF,IEF,MSUDF,DBF}
JDH AH MS 34X VICTOR 33Z45C ET (DLF,HYF,IEF,MSUDF)
P43615978 AH JDH MS 25L WRANGLER 34X ET (SOD){DLF,HYF,IEF}

CE	BW	WW	YW	DMI	SC	SCF	MM	M&G	MCE
5.1	2.0	66	101	0.0	1.6	22.7	21	54	5.3
MCW	UDDR	TEAT	CW	FAT	REA	MARB	BMI\$	BIU\$	CHB\$
101	1.50	1.50	91	-0.016	0.80	0.31	498	594	176

- Homozygous Polled

9J | CCCC EQUITY 279K 554N ET {DLF,HYF,IEF,MSUDF,MDF,DBF}

P44703564 | Calved: 3/22/25 | Tattoo: BE 554N



JW 185T MERIT 21134 (CHB){DLF,HYF,IEF,MSUDF,MDF,DBF}
CHURCHILL EQUITY 3316L ET (DLF,HYF,IEF,MSUDF,MDF,DBF)
P44504283 CHURCHILL LADY 023H ET (DLF,HYF,IEF,MSUDF,MDF,DBF)
NJW 79Z 231I ENDURE 173D ET (SOD){CHB}{DLF,HYF,IEF,MSUDF,MDF,DBF}
CCCC MISS ENDURE 5405 279K ET (DLF,HYF,IEF,MSUDF,MDF,DBF)
P44373362 KE MISS CASH 4A 5405 ET (DLF,HYF,IEF,MSUDF)

CE	BW	WW	YW	DMI	SC	SCF	MM	M&G	MCE
8.3	1.4	64	110	0.6	1.9	16.9	29	61	6.4
MCW	UDDR	TEAT	CW	FAT	REA	MARB	BMI\$	BIU\$	CHB\$
123	1.30	1.30	92	0.044	0.90	-0.10	378	443	126

Chapman Land & Cattle is making their return to the Pen Bull show at the National Western, and they've brought an elite set of curve-bending, strong-aged bulls that will move the needle in almost any operation. The last time they had pen of bulls, they took home the honor of Reserve Champion Pen of 3 Bulls in 2024.

First up in the pen is the Deluxe son, 333M. He potentially represents the very first Deluxe bull to sell in the U.S., following the tremendous splash made in 2024 of Deluxe semen sales. This Homozygous Polled bull offers elite calving ease, ranking in the top 5% of the breed, along with massive growth with both his WW and YW ranking in the top 1%. Coupled with that, his UDDR and TEAT rank 9% and 13% respectively. 333M was one of the top performing bulls for Chapman as he ratioed 118 at weaning time and posted a massive YW ratio of 122! It's not often you can find herd sire prospects loaded with this much performance along with double digit calving ease.

The second prospect in the lineup is the Steadfast ET son, 312M. His donor dam was the dam of the entire Reserve Champion Pen in 2024, and she's hit it out of the park again with this calf. Her maternal ability is rock solid, as she's posted progeny ratios of 12@99 for BW, 12@101 for WW, 7@103 for YW, 9@103 for REA and 9@99 for IMF. He offers the highest CHB figure of the pen along with a WW in the top 4% and YW in the top 6%. Couple with that, his calving ease ranks in the top third of the breed with strong REA & MARB numbers.

Last, but most certainly not least, is the On Demand son, 34M. He is out of a rock-solid donor for Chapman's. Homozygous Polled, 34M is another big-time calving ease candidate with elite growth at weaning and yearling time, with a WW EPD in the top 7% of the breed. Excellent UDDR, TEAT and carcass numbers, 34M offers the highest stayability index of this pen.

All three of these fall born herd sire prospects offer great pigment, elite numbers, and are ready for heavy use this spring, and the resulting progeny will offer unrivaled performance.



CLC JTW K016 NO RISK 83J 333M

10A | CLC JTW K016 NO RISK 83J 333M {DLF,HYF,IEF,MSUDF}

P44640416 | Calved: 10/2/24 | Tattoo: RE 333M

H B DISTINCT {CHB}{DLF,HYF,IEF,MSUDF,MDF,DBF}

HUTH CLC WF DELUXE K016 {DLF,HYF,IEF,MSUDF,MDF,DBF}

P44370488

HUTH F035 MANDY H029 {DLF,HYF,IEF,MSUDF,MDF,DBF}



INNISFAIL WHR X651/723 4013 ET {SOD}{CHB}{DLF,HYF,IEF,MSUDF,MDF,DBF}

MOHICAN DAISY 83J {DLF,HYF,IEF,MSUDF}

P44238649

MOHICAN DAISY 41E {DLF,HYF,IEF,MSUDF,MDF,DBF}

CE	BW	WW	YW	DMI	SC	SCF	MM	M&G	MCE
11.4	1.7	80	130	1.4	1.5	16.6	23	63	0.7
MCW	UDDR	TEAT	CW	FAT	REA	MARB	BMI\$	BIIS	CHBS
140	1.40	1.40	89	0.034	0.74	0.14	361	459	125

10B | CLC 156 BOOTLEGGER 76E 312M ET {DLF,HYF,IEF,MSUDF}

P44640414 | Calved: 10/1/24 | Tattoo: RE 312M

NJW 79Z 2311 ENDURE 173D ET {SOD}{CHB}{DLF,HYF,IEF,MSUDF,MDF,DBF}

NJW 202C173D STEADFAST 156J ET {CHB}{DLF,HYF,IEF,MSUDF,MDF,DBF}

P44276463

NJW 160Z 8Y HOME MAKER 202C {DLF,HYF,IEF,MSUDF,MDF,DBF}



TH 403A 475Z PIONEER 358C ET {SOD}{DLF,HYF,IEF,MSUDF}

TH 329 358C LANA 76E {DLF,HYF,IEF,MSUDF,MDF,DBF}

P43818744

FTF 7227 MS LOGIC 329A {DLF,HYF,IEF}

CE	BW	WW	YW	DMI	SC	SCF	MM	M&G	MCE
6.7	1.9	72	114	0.7	1.4	17.5	31	67	-1.2
MCW	UDDR	TEAT	CW	FAT	REA	MARB	BMI\$	BIIS	CHBS
117	1.40	1.30	102	0.054	0.71	0.18	404	497	156

10C | CLC 619 ON THE ROCKS 95 34M ET {DLF,HYF,IEF,MSUDF}

P44647256 | Calved: 10/2/24 | Tattoo: RE 34M

RV VALOR 9444G ET {CHB}{DLF,HYF,IEF,MSUDF,MDF,DBF}

BAR JZ ON DEMAND {DLF,HYF,IEF,MSUDF,MDF,DBF}

P44355795

BAR JZ HANNAH 087B {DLF,HYF,IEF,MSUDF}



NJW 79Z 338 FORWARD 252F {DLF,HYF,IEF,MSUDF,MDF,DBF}

ILR 252F LADY BELLE 95H ET {DLF,HYF,IEF,MSUDF,MDF,DBF}

P44205581

KCF MISS REVOLUTION X328 ET {DOD}{DLF,HYF,IEF,MSUDF,MDF,DBF}

CE	BW	WW	YW	DMI	SC	SCF	MM	M&G	MCE
9.5	1.5	69	99	0.9	1.0	21.7	30	65	4.3
MCW	UDDR	TEAT	CW	FAT	REA	MARB	BMI\$	BIIS	CHBS
88	1.40	1.40	82	0.014	0.77	0.15	437	526	122



CLC 156 BOOTLEGGER 76E 312M ET



CLC 619 ON THE ROCKS 95 34M ET



Chapman Land & Cattle
Ryan Chapman 615-335-3187
John Thomas Woolfolk 731-345-1585
Bobby Singleton 615-708-1034

In recent years, Jill, Cole and the crew from Central Alberta have left their mark on the National Western, exhibiting some of the very best bulls you'll find anywhere in North America. Fresh on the heels of their 2025 Grand Champion Carload of Bulls, which was a follow up to their 2024 Reserve Champion Carload, the Harvie clan have offered a different twist in 2026, bringing a Pen of Three of their very best.

The first three herd sire prospects are their first sired by their newest herd bull from NJW, Daybreak 163K. He is a son of the renowned matriarch, 73S, and offers exceptional calving ease without sacrificing growth and performance. Their dam is potentially the most productive females to walk any pasture in Alberta, MS Firefly 125Y. The past two years Carloads have been anchored by 125Y sons and have gone on to be the selections out of those year's sales. Just this past November, 80N won The Semex President's Classic at Canadian Western Agribition.

The fourth bull in this pen is sired by a member of their 2024 Carload and offers exceptional calving ease with a huge spread to his growth numbers, and he's Homozygous Polled. His dam was Harvie Ranching's selection from Medonte Highlands in their 2023 sale, and an outcross to many herds in the U.S. His maternal brother was a high selling bull last year to Lindskov's LT Ranch.

Four outstanding maternal prospects from the Harvie program that will be at the forefront of the National Western.



HARVIE BOLD STATEMENT ET 80N



HARVIE PROGRESSIVE ET 12N



HARVIE SUNRISE ET 38N



HARVIE COMMISIONER 1N

SHF DAYBREAK Y02 D287 ET (CHB)(DLF,HYF,IEF,MSUDF)
NJW 73S D287 DAYBREAK 163K ET (DLF,HYF,IEF,MSUDF)
 P44376851 NJW P606 72N DAYDREAM 73S (DLF,HYF,IEF,MSUDF,MDF)
 HARVIE WINSTON 5W (HYP,DBP)
HARVIE MS FIREFLY 125Y (HYP,DBF)
 P44086738 HARVIE MS FIREFLY ET 55W (HYP)



11A | HARVIE BOLD STATEMENT ET 80N {HYF}

P44705841 | Calved: 1/31/25 | Tattoo: RE JILL 80N

CE	BW	WW	YW	DMI	SC	SCF	MM	M&G	MCE
1.4	4.0	70	109	0.4	0.6	23.1	34	69	-1.4
MCW	UDDR	TEAT	CW	FAT	REA	MARB	BMIS	BIIS	CHBS
103	1.40	1.40	83	0.024	0.58	-0.08	458	536	114

11B | HARVIE PROGRESSIVE ET 12N {HYF}

P44705839 | Calved: 1/17/25 | Tattoo: RE JILL 12N

CE	BW	WW	YW	DMI	SC	SCF	MM	M&G	MCE
0.1	4.6	66	101	0.4	0.5	23.1	36	70	-1.3
MCW	UDDR	TEAT	CW	FAT	REA	MARB	BMIS	BIIS	CHBS
109	1.40	1.40	86	0.004	0.57	0.02	468	548	126

11C | HARVIE SUNRISE ET 38N {HYF}

P44705840 | Calved: 1/23/25 | Tattoo: RE JILL 38N

CE	BW	WW	YW	DMI	SC	SCF	MM	M&G	MCE
10.0	1.3	61	97	0.4	0.7	27.0	31	62	1.3
MCW	UDDR	TEAT	CW	FAT	REA	MARB	BMIS	BIIS	CHBS
88	1.60	1.50	77	0.054	0.56	-0.01	506	583	109

11D | HARVIE COMMISIONER 1N {HYF}

P44705846 | Calved: 1/14/25 | Tattoo: RE JILL 1N

NJW 202C 81E STEWARD 98G ET (DLF,HYF,IEF,MSUDF,MDF)
HARVIE OVHF NATURAL MADE 4L (DLF,HYF,IEF,MSUDF,MDF,DBF)
 P44495383 HARVIE MS FIREFLY ET 75G (HYP,MDF)



MHPH 101S UMPIRE 118U
MHPH 118U PEBBLES 130F (HYP,DBF)
 P44380634 MHPH 106A PEBBLES 131D (HYP,DBP)

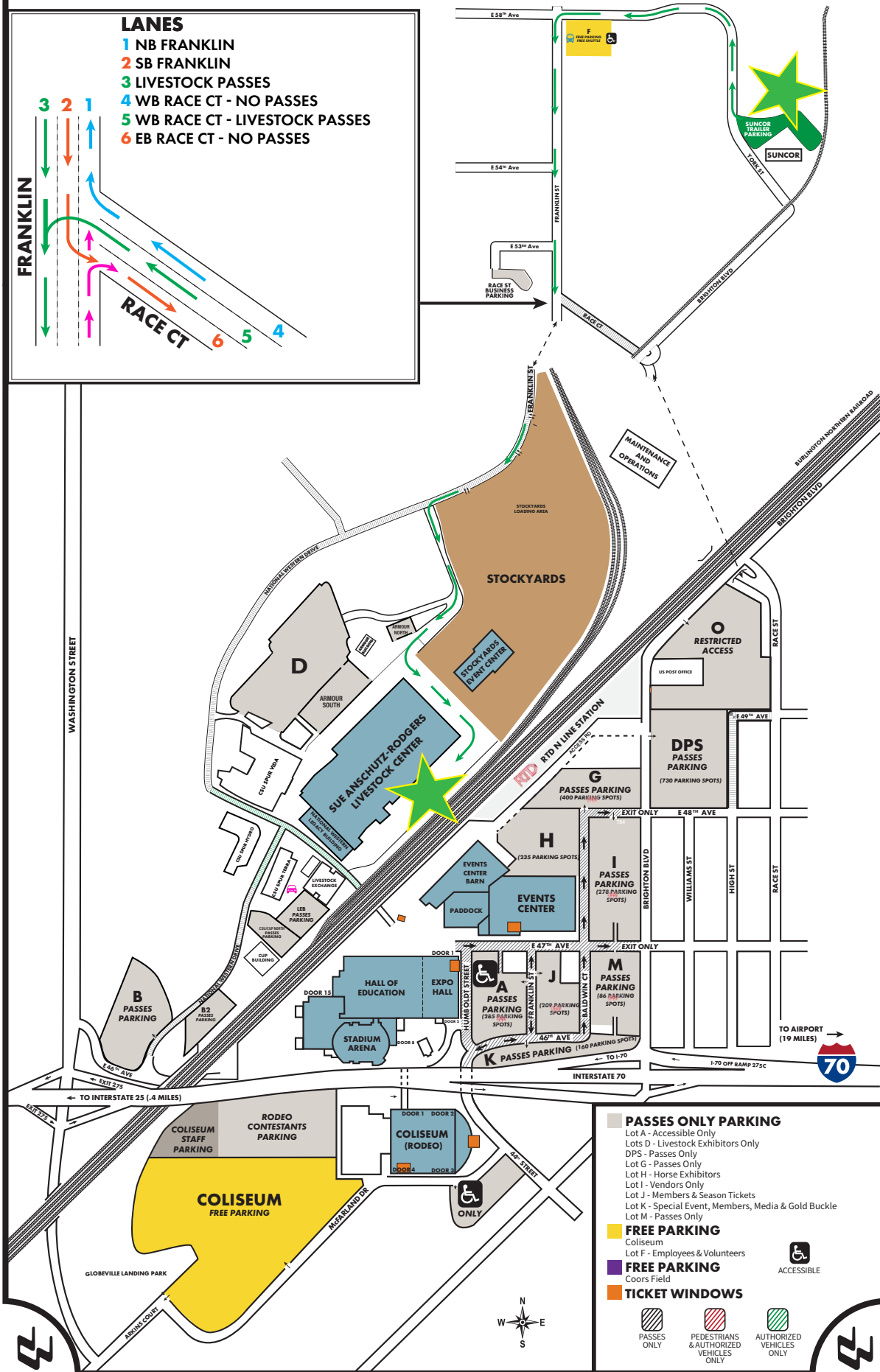
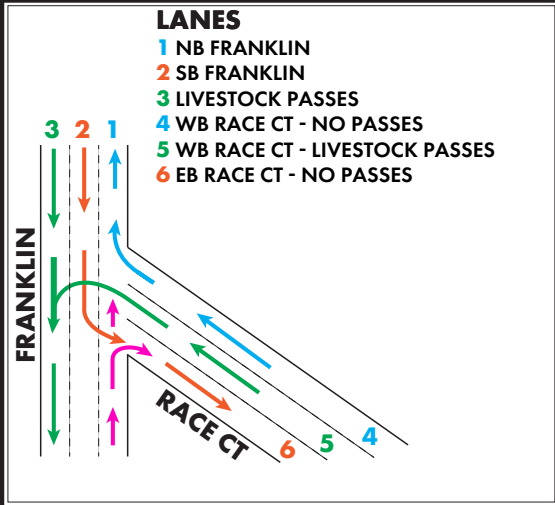
CE	BW	WW	YW	DMI	SC	SCF	MM	M&G	MCE
10.6	1.9	61	93	0.3	1.1	20.9	33	63	4.7
MCW	UDDR	TEAT	CW	FAT	REA	MARB	BMIS	BIIS	CHBS
108	1.50	1.50	76	0.004	0.75	0.01	430	501	117



Harvie Ranching
 2332 Twp. Rd. 320, Mountain View County
 Alberta, T4H 4C9, Canada
 Cole 403-994-1314
 Jill 403-771-3502
 charvieranching@gmail.com
 www.harvieranching.com

2026 STOCK SHOW EXHIBITOR SUNCOR MAP

Presented by



After three years of exhibiting pen cattle at the National Western, Haxton Hoffman has established himself as one of the brightest next generation of cattlemen in our industry. Without question, this year's Pen of Bulls are some of the most exciting set of genetics he's produced.

This set of ET brothers is out of one of the youngest donors walking the Sandhills, Churchill Eve 3320L. Upon completion of her show career, winning her division at JNHE, she started her donor career with a bang. A full sister to these herd sire prospects was a high seller this past October, selling for \$30,000 at Hoffman Ranch's Female Sale. Eve is a continuation of the great Ladysport 2205 maternal line, as her dam was one of the most popular donors for Churchill ... herself possessing a great set of numbers and selling for \$67,500 in the Churchill dispersal.

The sire of these prospects is a young bull poised to take the Hereford breed by storm. He is the next in the great line of herd bulls Dixie E066 has produced, including Hoffman Richmond, Gerber High Time, among others. Great Plan is a true performance powerhouse with his first 12 calves on record ratioing 107 for WW.

Haxton has double stacked proven maternal greatness in this pen of herd sire prospects. They offer excellence in their genomic makeup to match their phenotypic presence. The very first sons from Great Plan arrives at the National Western ... take advantage of the freshest genetics Hoffman Ranch has to offer!



TH MASTERPLAN 183F (CHB)(DLF,HYF,IEF,MSUDF,MDF,DBF)
STELLPLUG GREAT PLAN ET (DLF,HYF,IEF,MSUDF,MDF,DBF)
 P44496581 GERBER 2426 DIXIE E066 (DLF,HYF,IEF,MDF,DBF)

H THE PROFIT 8426 ET (CHB)(DLF,HYF,IEF,MSUDF,MDF,DBF)
CHURCHILLEVE 3320L ET (DLF,HYF,IEF,MSUDF,MDF,DBF)
 P44500708 CHURCHILL LADY 0403H ET (DLF,HYF,IEF,MSUDF,MDF,DBF)



12A | HOFFMAN GREATER PLAN 588 ET (DLF,HYF,IEF,MSUDF,MDF,DBF)

P44687634 | Calved: 3/17/25 | Tattoo: BE 588

CE	BW	WW	YW	DMI	SC	SCF	MM	M&G	MCE
2.6	2.5	67	115	0.8	1.2	18.2	26	60	2.0
MCW	UDDR	TEAT	CW	FAT	REA	MARB	BMI\$	BIIS	CHBS
134	1.40	1.40	86	0.024	0.59	0.33	408	506	155

12B | HOFFMAN GREATER PLAN 584 ET (DLF,HYF,IEF,MSUDF,MDF,DBF)

P44687631 | Calved: 3/18/25 | Tattoo: BE 584

CE	BW	WW	YW	DMI	SC	SCF	MM	M&G	MCE
5.3	0.8	61	103	0.8	1.0	17.4	30	60	-0.5
MCW	UDDR	TEAT	CW	FAT	REA	MARB	BMI\$	BIIS	CHBS
122	1.40	1.50	69	0.014	0.44	0.35	374	467	132

• Homozygous Polled

12C | HOFFMAN GREATER PLAN 558 ET (DLF,HYF,IEF,MSUDF,MDF,DBF)

P44683617 | Calved: 3/16/25 | Tattoo: BE 558

CE	BW	WW	YW	DMI	SC	SCF	MM	M&G	MCE
-2.2	3.0	68	114	0.8	1.4	14.9	22	56	-2.6
MCW	UDDR	TEAT	CW	FAT	REA	MARB	BMI\$	BIIS	CHBS
141	1.20	1.10	84	0.014	0.59	0.36	359	458	153

• Homozygous Polled



1/5 HOFFMAN RANCH
 modern, stout, functional

Hoffman Ranch
 P.O. Box 287, Thedford, NE 69166
 Jason Hoffman 530-604-5096
 Denny Hoffman 406-425-0859
 Office 308-645-2279
www.hoffmanranch.com



Web www.focusmarketinggroup.net
Email office@focusmarketinggroup.net
Contact 785-213-5435 / 605-870-9072



Unleash the power of US



Kyla Fawcett
Owner / Field Staff



Kensie Meredith
Project Manager



Amanda Holt
Graphic Design



Alexis Rumford
Field Staff
Social Media Mang.



Magen Tol
Field Staff

Focus Marketing Group (FMG) believes that the best marketing campaigns are created when the marketing agency and customer **work together as a team**. This is why we focus on creating strong team dynamics with our customers. We want to get to know your operation inside and out, so that we can create marketing efforts that are tailored to your specific needs.

We want to be your partner in **SUCCESS; when you succeed, we succeed.**

focus 

www.focusmarketinggroup.net

FMG provides a wide range of services tailored to the specific needs of the livestock industry

Captivating Photography - High-Quality Videography - Creative Graphic Design - Search Engine Optimized Web Design & Innovative Social Media Management

**100 Bulls
Hereford Heifers
Baldy Heifers**

Fawcett's Elm Creek Ranch *Annual Production Sale*

February 9, 2026 • 1 p.m. cst at the ranch • Ree Heights, South Dakota

please join us for lunch prior to the sale



Fawcett's
ELMCREEKRANCH
Ree Heights, South Dakota

www.fawcettselmcreekranch.com

To request a sale catalog, please call or text 605-870-6172 or email kylajfawcett@gmail.com

One thing can be depended upon during the National Western ... the crew from Landgren Ranch will have one of the best set of bulls of any breed in the Yards! In recent years, no other program has achieved the heights this crew has: 2025 Reserve Carload of Bulls, 2024 Grand Champion Carload of Bulls, 2023 Grand Champion Carload of Bulls. Following that, selections from their Carload has been one of the highlights of this sale, with herd sire prospects selling to some of the top programs in the nation.

The following bulls represent many young prospects centered around their Foundation donor female, and the dam of past National Champion Slinger, UPS Miss Final Test 9103. Between direct daughters, as well as sons of their young herd sire, Land Chief 2097, you're evaluating a carload with loads of maternal ability. Another feature is the first son sired by their \$52,000 choice in the 2024 Upstream sale to sell anywhere in the country. We'll let the data, pedigrees and photos do the talking from here. Take some time ... stop in the pens and evaluate a tremendous set of herd sire prospects.



LAND TAYLOR MADE 5059ET



LAND VOYAGER 5093



LAND CHIEF 5103

13D | LAND CHIEF 5103 {DLF,HYF,IEF,MSUDF,MDF,DBF}

P44697488 | Calved: 4/12/25 | Tattoo: BE 5103

JDH AH LINCOLN 106H ET (CHB) {DLF,HYF,IEF,MSUDF,MDF}

LAND CHIEF 2097 {DLF,HYF,IEF,MSUDF,MDF}

P44391117

UPS MISS FINAL TEST 9103 {DOD}{DLF,HYF,IEF,MSUDF,MDF,DBF}

BAR JZ SLEEP ON 738C {SOD}{DLF,HYF,IEF,MSUDF}

LAND MISS SLEEP ON 0137

P44205165

UPS MISS ENDURE 8136

CE	BW	WW	YW	DMI	SC	SCF	MM	M&G	MCE
1.4	4.2	83	132	1.1	1.5	21.2	43	84	0.2
MCW	UDDR	TEAT	CW	FAT	REA	MARB	BMIS	BIIS	CHBS
131	1.30	1.30	106	0.014	0.90	0.39	478	596	180

• Homozygous Polled

13A | LAND TAYLOR MADE 5059ET {DLF,HYF,IEF,MSUDF,MDF,DBF}

P44697493 | Calved: 3/10/25 | Tattoo: BE 5059

UPS ENTICE 9365 ET (CHB) {DLF,HYF,IEF,MSUDF}

UPSTAYLOR MADE ET {DLF,HYF,IEF,MSUDF,MDF,DBF}

P44375603

SHF OKSANA 001A D03 ET {DLF,HYF,IEF,MDF,DBF}

F FINAL TEST 722 (CHB) {DLF,HYF,IEF,MSUDF,MDF,DBF}

UPS MISS FINAL TEST 9103 {DOD}{DLF,HYF,IEF,MSUDF,MDF,DBF}

P44045530

UPS MISS ALTA 7035 {DLF,HYF,IEF,MDF,DBF}

CE	BW	WW	YW	DMI	SC	SCF	MM	M&G	MCE
9.5	1.6	72	116	1.1	1.6	21.5	41	77	8.3
MCW	UDDR	TEAT	CW	FAT	REA	MARB	BMIS	BIIS	CHBS
104	1.30	1.30	80	0.024	0.70	0.53	454	572	159

• Homozygous Polled

13B | LAND VOYAGER 5093 {DLF,HYF,IEF,MSUDF,MDF,DBF}

P44697490 | Calved: 3/30/25 | Tattoo: BE 5093

SR EXPEDITION 6196 ET {DLF,HYF,IEF,MSUDF}

UPS VOYAGER {DLF,HYF,IEF,MSUDF,MDF,DBF}

P44392524

UPS MISS ENDURE 0626 {DLF,HYF,IEF,MSUDF}

F FINAL TEST 722 (CHB) {DLF,HYF,IEF,MSUDF,MDF,DBF}

UPS MISS FINAL TEST 9103 {DOD}{DLF,HYF,IEF,MSUDF,MDF,DBF}

P44045530

UPS MISS ALTA 7035 {DLF,HYF,IEF,MDF,DBF}

CE	BW	WW	YW	DMI	SC	SCF	MM	M&G	MCE
-0.2	4.3	80	129	1.0	1.9	23.3	41	81	3.5
MCW	UDDR	TEAT	CW	FAT	REA	MARB	BMIS	BIIS	CHBS
131	1.40	1.50	101	0.064	0.97	0.29	499	610	163

• Homozygous Polled

13C | LAND 2072 5084ET {DLF,HYF,IEF,MSUDF,MDF,DBF}

P44686379 | Calved: 3/28/25 | Tattoo: BE 5084

GREEN JCS MAKERS MARK 2296 ET {DLF,HYF,IEF,MSUDF,MDF,DBF}

LAND MAKERS MARK 2072ET {DLF,HYF,IEF,MSUDF,MDF,DBF}

P44392089

TH 96A Z303 MISS DOM 302D {DLF,HYF,IEF,MSUDF,MDF,DBF}

F FINAL TEST 722 (CHB) {DLF,HYF,IEF,MSUDF,MDF,DBF}

UPS MISS FINAL TEST 9103 {DOD}{DLF,HYF,IEF,MSUDF,MDF,DBF}

P44045530

UPS MISS ALTA 7035 {DLF,HYF,IEF,MDF,DBF}

CE	BW	WW	YW	DMI	SC	SCF	MM	M&G	MCE
6.6	1.7	62	101	0.7	1.6	23.1	25	56	4.0
MCW	UDDR	TEAT	CW	FAT	REA	MARB	BMIS	BIIS	CHBS
102	1.60	1.60	84	0.014	0.69	0.31	473	567	149

13E | LAND CHEIF 5089 {DLF,HYF,IEF,MSUDF,MDF,DBF}

P44686377 | Calved: 3/28/25 | Tattoo: BE 5089

JDH AH LINCOLN 106H ET (CHB) {DLF,HYF,IEF,MSUDF,MDF}

LAND CHIEF 2097 {DLF,HYF,IEF,MSUDF,MDF}

P44391117

UPS MISS FINAL TEST 9103 {DOD}{DLF,HYF,IEF,MSUDF,MDF,DBF}

NJW 79Z 22Z MIGHTY 49C ET {SOD}{DLF,HYF,IEF,MSUDF,MDF}

UPS MISS MIGHTY 8030 {DLF,HYF,IEF,MSUDF,MDF,DBF}

44093109

UPS MISS 2504 SENSATION 634 {IEP}

CE	BW	WW	YW	DMI	SC	SCF	MM	M&G	MCE
1.4	3.4	72	110	1.0	1.4	21.7	34	69	1.5
MCW	UDDR	TEAT	CW	FAT	REA	MARB	BMIS	BIIS	CHBS
86	1.40	1.50	75	-0.016	0.75	0.02	424	507	104

13F | LAND CHIEF 5075 ET {DLF,HYF,IEF,MSUDF,MDF,DBF}

P44697491 | Calved: 3/16/25 | Tattoo: BE 5075



JDH AH LINCOLN 106H ET {CHB}{DLF,HYF,IEF,MSUDF,MDF}
LAND CHIEF 2097 {DLF,HYF,IEF,MSUDF,MDF}
P44391117 UPS MISS FINAL TEST 9103 {DOD}{DLF,HYF,IEF,MSUDF,MDF,DBF}
NJW 79Z 2311 ENDURE 1730 ET {SOD}{CHB}{DLF,HYF,IEF,MSUDF,MDF,DBF}
LAND MISS ABBY 8003 ET {DLF,HYF,IEF,MSUDF,MDF,DBF}
P44015508 UPS MISS NITRO 0364 ET {DLF,HYF,IEF,MDF,DBF}

CE	BW	WW	YW	DMI	SC	SCF	MM	M&G	MCE
6.0	4.3	72	112	1.1	0.4	18.6	21	57	1.1
MCW	UDDR	TEAT	CW	FAT	REA	MARB	BMIS	BIIS	CHBS
92	1.50	1.60	99	0.004	0.85	0.18	407	498	148

• Homozygous Polled



LAND CHIEF 5075 ET

13G | LAND CHIEF 5086 {DLF,HYF,IEF,MSUDF,MDF,DBF}

P44697489 | Calved: 3/22/25 | Tattoo: BE 5086



JDH AH LINCOLN 106H ET {CHB}{DLF,HYF,IEF,MSUDF,MDF}
LAND CHIEF 2097 {DLF,HYF,IEF,MSUDF,MDF}
P44391117 UPS MISS FINAL TEST 9103 {DOD}{DLF,HYF,IEF,MSUDF,MDF,DBF}
LAND UNDISPUTED 725 ET {DLF,HYF,IEF,MSUDF,MDF}
LAND MISS UNDISPUTED 0144
P44241647 LAND MISS SLEEPN ON 734

CE	BW	WW	YW	DMI	SC	SCF	MM	M&G	MCE
-2.4	4.7	79	131	0.9	1.3	19.2	37	77	2.4
MCW	UDDR	TEAT	CW	FAT	REA	MARB	BMIS	BIIS	CHBS
124	1.40	1.50	112	0.034	0.75	0.15	440	539	168

• Homozygous Polled



LAND LINCOLN 5072ET

13H | LAND CHIEF 5104 {DLF,HYF,IEF,MSUDF,MDF,DBF}

P44697496 | Calved: 4/10/25 | Tattoo: BE 5104



JDH AH LINCOLN 106H ET {CHB}{DLF,HYF,IEF,MSUDF,MDF}
LAND CHIEF 2097 {DLF,HYF,IEF,MSUDF,MDF}
P44391117 UPS MISS FINAL TEST 9103 {DOD}{DLF,HYF,IEF,MSUDF,MDF,DBF}
NJW 79Z 2311 ENDURE 1730 ET {SOD}{CHB}{DLF,HYF,IEF,MSUDF,MDF,DBF}
LAND MISS ENDURE 1032
P44555292 LAND MISS PLAYMAKER 606ET

CE	BW	WW	YW	DMI	SC	SCF	MM	M&G	MCE
-0.8	4.3	79	125	1.0	1.5	23.6	33	73	1.9
MCW	UDDR	TEAT	CW	FAT	REA	MARB	BMIS	BIIS	CHBS
96	1.40	1.50	113	0.024	1.24	0.11	506	602	164



LAND FRISCO 5046ET

13I | LAND LINCOLN 5072ET {DLF,HYF,IEF,MSUDF,MDF,DBF}

P44697495 | Calved: 3/10/25 | Tattoo: BE 5072



JDH VICTOR 719T 33Z ET {SOD}{CHB}{DLF,HYF,IEF,MSUDF,MDF}
JDH AH LINCOLN 106H ET {CHB}{DLF,HYF,IEF,MSUDF,MDF}
P44148953 AH MS 25L RUMBLER 19Z {DOD}{DLF,HYF,IEF,MSUDF,MDF,DBF}
NJW 79Z 2311 ENDURE 1730 ET {SOD}{CHB}{DLF,HYF,IEF,MSUDF,MDF,DBF}
LAND MISS ENDURE 833ET {DLF,HYF,IEF,MSUDF,MDF}
P43953593 UPS MISS NITRO 0364 ET {DLF,HYF,IEF,MDF,DBF}

CE	BW	WW	YW	DMI	SC	SCF	MM	M&G	MCE
-1.8	5.2	76	131	0.8	1.1	19.3	28	67	-2.4
MCW	UDDR	TEAT	CW	FAT	REA	MARB	BMIS	BIIS	CHBS
128	1.30	1.30	105	0.024	0.97	0.16	443	538	167

• Homozygous Polled

13J | LAND FRISCO 5046ET {DLF,HYF,IEF,MSUDF,MDF,DBF}

P44697492 | Calved: 3/20/25 | Tattoo: BE 5046



JDH AH LINCOLN 106H ET {CHB}{DLF,HYF,IEF,MSUDF,MDF}
LAND FRISCO 3060 {DLF,HYF,IEF,MSUDF,MDF,DBF}
P44485686 UPS MISS MIGHTY 8030 {DLF,HYF,IEF,MSUDF,MDF,DBF}
NJW 79Z 2311 ENDURE 1730 ET {SOD}{CHB}{DLF,HYF,IEF,MSUDF,MDF,DBF}
LAND MISS ENDURE 824ET {DLF,HYF,IEF,MSUDF,MDF}
P43953588 UPS MISS NITRO 0364 ET {DLF,HYF,IEF,MDF,DBF}

CE	BW	WW	YW	DMI	SC	SCF	MM	M&G	MCE
3.8	3.8	60	96	0.6	0.9	14.6	26	56	-1.9
MCW	UDDR	TEAT	CW	FAT	REA	MARB	BMIS	BIIS	CHBS
103	1.30	1.20	100	0.054	0.91	0.16	359	436	152

Landgren
RANCH

Landgren Ranch
49812 Hwy. 70
Bartlett, NE 68622
Mark cell 402-340-0673
Matt cell 402-340-4615

This pick of bulls is very intriguing. All four are natural calves out of some of the most prolific cows in the Perks Ranch program and sired by some of the most popular bulls in the breed. Without a doubt, these bulls are all extremely good, but each brings a little something different to the table.

First up, 5032, a son of Kool Profit, out of a red eyed Cadillac daughter with near perfect teat and udder. "Fast Cash" is good looking, powerful, and pigmented, possessing a balanced set of numbers. His length of front third and up-headedness should add style to anyone's herd. Actual BW 85 lbs.

5039 is an On Demand out of a Red Kingdom that was purchased from GKB and was shown successfully by Kendall Boatman. Her udder is phenomenal and she is a heavy milking 2-year-old. "Demand" is great structured and very sound, ranking better than breed average in 13 traits and all 3 indexes. Actual BW 70 lbs. Homozygous Polled.

If you like them dark red with extra pigment, then 5040 is for you. "Rawhide" is big hipped, wide topped and powerful. His Milk and M&G put him in the top 1 and 2 percent of the breed. He is sired by He Delivers whose progeny have been outstanding and first daughters in production are gorgeous and proving be to productive kind of cattle. His dam is a Perks Ranch donor who just keeps knocking it out of the park and is Ghostwood's grandam. Actual BW 80 lbs.

Last, but not least, is 5052. "Oakwood" is one of the first progeny to sell out of Ghostwood. His dam is a full sister to Perks Ranch herd sires Cadillac and Chuma, whose dam, 5101, has written her own history book. "Oakwood" is quite possibly the deepest bodied, softest middled bull we have ever raised. He is very flexible off the ground and freckle faced with big time growth numbers that put him in the top 10% of the breed. Actual BW 70 lbs.

Whichever choice is made and even though they are a little different, one thing is for sure, they are all bred to be easy fleshing cattle with good udder quality. Retaining ¼ semen interest in choice.



14A | PERKS 1066 FAST CASH 5032 {DLF,HYF,IEF,MSUDF,MDF,DBF}

P44676428 | Calved: 3/8/25 | Tattoo: BE 5032

H THE PROFIT 8426 ET (CHB) (DLF,HYF,IEF,MSUDF,MDF,DBF)
BK CMCC KOOL PROFIT KOOTIE (DLF,HYF,IEF,MSUDF,MDF)
P44405442 BK DISTINCTIVE POINTS 6410 ET (DLF,HYF,IEF,MSUDF)
2TK PERKS 5101 CADILLAC 8039 ET (DLF,HYF,IEF,MSUDF)
PERKS 7003 MIS MATERNAL 1066 (DLF,HYF,IEF,MSUDF,MDF,DBF)
P44270552 PERKS 172P SENSATION 7003 ET (DLF,HYF,IEF,MDF,DBF)

CE	BW	WW	YW	DMI	SC	SCF	MM	M&G	MGE
-0.7	3.9	64	109	0.5	1.0	12.1	27	59	-3.8
MCW	UDDR	TEAT	CW	FAT	REA	MARB	BMI\$	BIIS	CHBS
123	1.20	1.30	81	0.034	0.74	0.28	319	406	149

14B | 2TK PERKS DEMAND 5039 {DLF,HYF,IEF,MSUDF,MDF,DBF}

P44661451 | Calved: 3/10/25 | Tattoo: BE 5039

RV VALOR 9444G ET (CHB) (DLF,HYF,IEF,MSUDF,MDF,DBF)
BAR JZ ON DEMAND (DLF,HYF,IEF,MSUDF,MDF,DBF)
P44355795 BAR JZ HANNAH 087B (DLF,HYF,IEF,MDF)
T/R GKB AC RED KINGDOM J16 (DLF,HYF,IEF,MSUDF,MDF,DBF)
GKB J16 DIANA L114 ET (DLF,HYF,IEF,MSUDF,MDF,DBF)
P44434680 SULL TCC DIANA 4064B ET (DLF,HYF,IEF,MSUDF,DBP)

CE	BW	WW	YW	DMI	SC	SCF	MM	M&G	MGE
8.3	2.7	74	109	0.7	1.1	22.5	34	70	3.8
MCW	UDDR	TEAT	CW	FAT	REA	MARB	BMI\$	BIIS	CHBS
97	1.40	1.40	88	0.014	0.59	0.01	452	539	122

• Homozygous Polled

14C | PERKS PEJ 8042 RAWHIDE 5040 {DLF,HYF,IEF,MSUDF,MDF,DBF}

P44676435 | Calved: 3/16/25 | Tattoo: BE 5040

NJW 79Z Z311 ENDURE 173D ET (SOD)(CHB) (DLF,HYF,IEF,MSUDF,MDF,DBF)
UPS HE DELIVERS 0290 ET (CHB) (DLF,HYF,IEF,MSUDF,MDF)
P44186655 UPS MISS HOMETOWN 4279 ET (DLF,HYF,IEF,MSUDF,MDF)
C 5280 DIVERSIFIED 6121 ET (DLF,HYF,IEF,MSUDF,MDF)
PERKS 625 DIVERSIFIED GAL 8042 (DOB) (DLF,HYF,IEF,MSUDF)
P43937415 PERKS 58W LIFETIME GIRL 625 ET (DLF,HYF,IEF)

CE	BW	WW	YW	DMI	SC	SCF	MM	M&G	MGE
4.4	4.7	72	108	0.9	1.7	21.8	41	76	3.5
MCW	UDDR	TEAT	CW	FAT	REA	MARB	BMI\$	BIIS	CHBS
112	1.20	1.20	89	0.034	0.74	0.08	445	533	124

14D | PERKS 1117 OAKWOOD 5052 {DLF,HYF,IEF,MSUDF,MDF,DBF}

P44676445 | Calved: 4/3/25 | Tattoo: BE 5052

UPS HE DELIVERS 0290 ET (CHB) (DLF,HYF,IEF,MSUDF,MDF)
PERKS PRCC 0039 GHOSTWOOD 3016 (DLF,HYF,IEF,MSUDF,MDF,DBF)
P44479954 PERKS 8042 MISS MANDATE 0039 (DLF,HYF,IEF,MSUDF)
C 5280 DIVERSIFIED 6121 ET (DLF,HYF,IEF,MSUDF,MDF)
PERKS 5101 CALLIE 1117 ET (DLF,HYF,IEF,MSUDF)
P44339513 PERKS 2029 COPPER LADY 5101 (DLF,HYF,IEF)

CE	BW	WW	YW	DMI	SC	SCF	MM	M&G	MGE
2.6	3.2	74	109	1.1	1.6	17.2	26	63	-2.2
MCW	UDDR	TEAT	CW	FAT	REA	MARB	BMI\$	BIIS	CHBS
109	1.20	1.20	97	-0.006	0.74	-0.07	371	448	118



Perks Ranch
12526 N. Weldon Rd., Rockford, IL 61102
Tom: 404-372-6754 • Tammy: 770-354-4195
tomtammy@perksranch.com



TC

CLC 76E LANA K016 326M ET

15

CLC 76E LANA K016 326M ET {DLF,HYF,IEF,MSUDF}

P44646062 | Calved: 10/3/24 | Tattoo: RE 326M

H B DISTINCT {CHB}{DLF,HYF,IEF,MSUDF,MDF,DBF}

HUTH CLC WF DELUXE K016 {DLF,HYF,IEF,MSUDF,MDF,DBF}

P44370488

HUTH F035 MANDY H029 {DLF,HYF,IEF,MSUDF,MDF}



TH 403A 475Z PIONEER 358C ET {SOD}{DLF,HYF,IEF,MSUDF}

TH 329 358C LANA 76E {DLF,HYF,IEF,MSUDF,MDF,DBF}

P43818744

FTF 7227 MS LOGIC 329A {DLF,HYF,IEF}

CE	BW	WW	YW	DMI	SC	SCF	MM	M&G	MGE
5.4	2.6	84	129	1.2	1.5	17.6	30	72	-4.0
MCW	UDDR	TEAT	CW	FAT	REA	MARB	BMIS	BIIS	CHBS
130	1.50	1.50	104	0.074	0.66	0.08	390	489	137



TH 329 358C LANA 76E



2024 Reserve Champion Pen of 3 Bulls

In 2024 at the Hereford Eve in OKC sale, semen on Huth CLC WF Deluxe K016 was the talk of the auction when total semen sales equaled \$65,000. From there, demand for his semen has continued to thrive as he's become one of the most sought-after breeding tools with 15 traits in the top 10% of the breed, including 7 traits in the top 1%! Now, John Thomas is presenting an opportunity to acquire one of the very first Deluxe daughters to enter production with this great bred heifer.

Let's start with her dam. Lana 76E was the donor dam of the set of ET brothers that comprised the 2024 Reserve Champion Pen of Bulls at the National Western. Her progeny have been the most sought after in Chapman's bull and female sales. A tremendous producer, she's posted progeny ratios of 12@99.8 for BW, 12@101 for WW, 7@103 for YW, 9@103 for REA and 9@98.8 for IMF.

326M's number profile allows for unending possibilities for mating decisions. She ranks in the top 1% of the breed for WW and YW; top 2% for MG, UDDR and CW; top 4% for TEAT and top 18% for REA. Her three indexes place her in the top third of the breed, as does her calving ease.

Bred AI on 11/28/25 to one of the hottest bulls in the breed, SHF Legion H315 L060, who was the \$58,000 pick from Sandhill's sale to Colyer Herefords, King Ranch & GKB Cattle. Will be pasture exposed to CLC Final Testament 24 223L ET, a sire co-owned with Stellplug that offers curve bending numbers and an 11.7 CE.

This great combination of Deluxe and Lana is a can't miss donor prospect in a great bred heifer package.



Woolfolk Farms
131 Hallie Anderson Rd.
Jackson, TN 38305
Scott Woolfolk 731-571-7399
John Thomas Woolfolk 731-345-1585



BK CMCC NIGHT LIGHTS 590N ET

16

BK CMCC NIGHT LIGHTS 590N ET

44710826 | Calved: 3/17/25 | Tattoo: RE BUCK/LE 590N

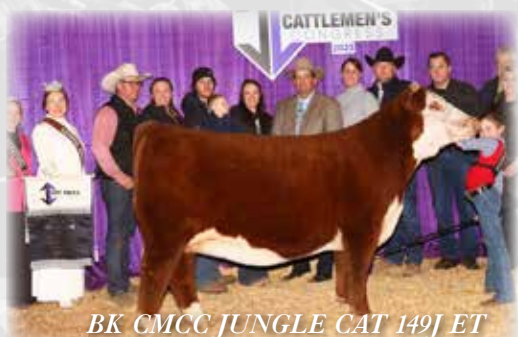
JDH AH BENTON 86 ET (CHB) (DLF,HYF,IEF,MSUDF,MDF,DBF)
STELLPLUG ALL THAT ET (DLF,HYF,IEF,MSUDF,MDF,DBF)
 44493284
 CHURCHILL LADY 0336H (DLF,HYF,IEF,MSUDF,MDF,DBF)

CHAC MASON 2214 (DLF,HYF,IEF)
BK DISTINCTIVE POINTS 641D ET (DLF,HYF,IEF,MSUDF)
 P43732012
 HAPP KOOL AID POINTS 1218 ET (DLF,HYF,IEF,MDF,DBF)

CE	BW	WW	YW	DMI	SC	SCF	MM	M&G	MCE
-0.3	4.1	59	101	0.4	0.7	16.6	28	57	3.0
MCW	UDDR	TEAT	CW	FAT	REA	MARB	BMIS	BIIS	CHBS
96	1.30	1.30	83	0.014	0.86	0.09	378	449	136



BKCMCC LOVE DISTINCTIVE 372LET



BK CMCC JUNGLE CAT 149J ET



Buck Cattle Co.
 Jiri and Brenda Buck
 18478 Cattle Dr.
 Madill, OK 74336
 580-795-4865
 jiri@buckcattle.com
 www.buckcattle.com



Ethan Moore
 580-795-6707

We are fortunate to welcome Buck Cattle Co. for the first time to this event with an outstanding open heifer. Night Lights 590N is a March born prospect that is poised to be a standout in that division. Stemming from the legendary dam of 11 National Champions, including this past JNHE Grand Champion Horned Female, 1218 progeny have dominated every major back drop from coast to coast, including her daughter BK Distinctive Points 641D.

641D has continued her dam's tradition, producing multiple National Champions, most recently the 2025 Grand Champion Polled Female in Fort Worth and the Reserve Champion Polled Female in 2025 here at the National Western in the Junior show. In 2023 another daughter, BK CMCC Jungle Cat 149J, was selected the Grand Champion Polled Female at both the Cattlemen's Congress and Fort Worth Stock Show, which she two-holed with her maternal sister as Reserve. In addition to the show ring, her progeny continue to be among the high sellers for Jiri, most recently with a half-sister commanding \$63,000 in the Fall Premier XXXI Sale.

Night Lights' sire was named the Reserve Champion Horned Bull last year here at the National Western, and is already being heralded in his ability to sire outstanding daughters. Night Lights is among the very first daughters to acquire anywhere on this great sire.

Between her phenotypic makeup, highly proven and marketable pedigree and balanced EPDs, BK CMCC Night Lights 590N ET possesses tremendous revenue potential once her halter career is over. The next great one awaits you at the National Western!

From the Land of Enchantment, Bill, Becky, Tom and the crew from King Ranch are renowned for their cow prospects that comprise their Denver pen, year after year. You don't have to take our word for it as the proof is in the pudding. 2023 Grand Champion Pen of Three ... 2024 Reserve Champion Pen of Three. Most importantly, these females are the type that is the bedrock of the Hereford breed ... highly productive cow prospects!

They are sired by the 2022 Grand Champion Horned bull, C 8086 Sancho 1084 ET. Following Denver that year, Sancho was the choice in a partnership between Bill and Bowling Ranch. Sadly, he was lost in 2024 before we could see the true impact he would make on the breed. This pen of females is a great representation of that very thing.

Maternally backed by real world females with great data and production records, this Pen of Females from Bill King Ranch continues the legacy for them of merchandising the very best cow prospects the Hereford breed has to offer at the National Western.

17A | BK MISS 1084 SANCHO 5190 {DLF,HYF,IEF,MSUDF,MDF,DBF}

P44700785 | Calved: 2/21/25 | Tattoo: BE 5190



ECR 628 IVYS ADVANCE 8923 ET {DLF,HYF,IEF,MDF,DBF}

C 8086 SANCHO 1084 ET {DLF,HYF,IEF,MSUDF,MDF}

44257610

C 4038 BELLE LASS 8086 ET {DLF,HYF,IEF}

C DOUBLE YOUR MILES 6077 ET {SOD}{DLF,HYF,IEF,MSUDF}

BK MS DOUBLE YOUR MILES 9014 ET {DBP}

P44046370

BK MS REMITALL ONLINE 4014 ET {DLF,HYF,IEF,MSUDF,DBP}

CE	BW	WW	YW	DMI	SC	SCF	MM	M&G	MCE
-2.6	5.4	64	105	0.1	1.5	19.2	29	61	-3.4
MCW	UDDR	TEAT	CW	FAT	REA	MARB	BMIS	BIIS	CHBS
70	1.20	1.40	69	0.024	0.59	0.05	399	476	118



BK MISS 1084 SANCHO 5190

17B | BK MISS 1084 SANCHO 5114 {DLF,HYF,IEF,MSUDF,MDF,DBF}

44700790 | Calved: 2/5/25 | Tattoo: BE 5114



ECR 628 IVYS ADVANCE 8923 ET {DLF,HYF,IEF,MDF,DBF}

C 8086 SANCHO 1084 ET {DLF,HYF,IEF,MSUDF,MDF}

44257610

C 4038 BELLE LASS 8086 ET {DLF,HYF,IEF}

BK KAHUNA 6072 {DLF,HYF,IEF,MSUDF}

BK MISS 6072 KAHUNA 0176 {DLF,HYF,IEF,MSUDF}

44189536

BK LADY LEGEND 5048 {DOD}{IEP}

CE	BW	WW	YW	DMI	SC	SCF	MM	M&G	MCE
-0.5	3.0	54	90	0.4	1.5	14.7	31	58	3.3
MCW	UDDR	TEAT	CW	FAT	REA	MARB	BMIS	BIIS	CHBS
87	1.20	1.10	76	0.004	0.79	0.06	337	401	121



BK MISS 1084 SANCHO 5114

17C | BK MISS 1084 SANCHO 5105 {DLF,HYF,IEF,MSUDF,MDF,DBF}

44700801 | Calved: 2/4/25 | Tattoo: BE 5105



ECR 628 IVYS ADVANCE 8923 ET {DLF,HYF,IEF,MDF,DBF}

C 8086 SANCHO 1084 ET {DLF,HYF,IEF,MSUDF,MDF}

44257610

C 4038 BELLE LASS 8086 ET {DLF,HYF,IEF}

NJW 98S R117 RIBEYE 88X ET {SOD}{DLF,HYF,IEF,MSUDF,MDF,DBF}

C 88X 1008X CANDY 7101 ET {DLF,HYF,IEF}

P43791072

HHR PAY IN GOLD 1008X ET {DLF,HYF,IEF,MDF,DBF}

CE	BW	WW	YW	DMI	SC	SCF	MM	M&G	MCE
0.8	4.7	66	110	0.2	1.6	11.3	34	67	0.5
MCW	UDDR	TEAT	CW	FAT	REA	MARB	BMIS	BIIS	CHBS
103	1.10	1.10	85	-0.026	0.88	0.28	327	414	168



BK MISS 1084 SANCHO 5105

17D | BK MISS 1084 SANCHO 5103 {DLF,HYF,IEF,MSUDF,MDF,DBF}

44700793 | Calved: 2/4/25 | Tattoo: BE 5103



ECR 628 IVYS ADVANCE 8923 ET {DLF,HYF,IEF,MDF,DBF}

C 8086 SANCHO 1084 ET {DLF,HYF,IEF,MSUDF,MDF}

44257610

C 4038 BELLE LASS 8086 ET {DLF,HYF,IEF}

BK 88X RIBEYE 3031 {SOD}{DLF,HYF,IEF,MSUDF}

BK MISS 3031 RIBEYE 7077 {DBP}

43851837

BK MISS RIBEYE 3071 {DBP}

CE	BW	WW	YW	DMI	SC	SCF	MM	M&G	MCE
-1.6	3.3	55	87	0.0	0.9	19.4	35	63	-2.0
MCW	UDDR	TEAT	CW	FAT	REA	MARB	BMIS	BIIS	CHBS
71	1.30	1.50	53	0.014	0.41	0.13	386	460	100



BK MISS 1084 SANCHO 5103

Bill King
Ranch

Bill King Ranch
183 King Rd., Stanley, NM 87056
Bill King 505-220-9909
Tom Spindle 505-321-8808
www.billkingranch.com

As their second time with an entry in this sale, and making the trip from the Upper Peninsula, Paul made the trip with three maternal prospects that'll make a big-time impact in almost any program.

They are sired by the 2024 Grand Champion Polled Bull at the Western States Hereford Show, Stellpflug Gunsmoke 222 ET. Gunsmoke has been one of the most talked about young sires the past two years, when you lay eyes on this set of half-sisters you will see why. Fancy and maternal in their makeup, they possess a curve-bending set of numbers allowing their mating decisions to be nearly open ended. All three possess exceptional growth, breed leading carcass, along with balanced calving ease numbers will yield highly marketable progeny designed for today's cattle business.



BHF 2506 MS GUM SMOKE



BHF 2518 MS GUN SMOKE



BHF 2505 MS GUM SMOKE

18A | BHF 2506 MS GUM SMOKE {DLF,HYF,IEF,MSUDF,MDF,DBF}

P44696774 | Calved: 3/2/25 | Tattoo: RE 2506



JDH AH BENTON 8G ET (CHB) {DLF,HYF,IEF,MSUDF,MDF,DBF}

STELLPLUG GUNSMOKE 222 ET {DLF,HYF,IEF,MSUDF,MDF,DBF}

P44400396

NJW 202C 4013 HOMEMAKER 90H ET {DLF,HYF,IEF,MSUDF,MDF,DBF}

JDH VICTOR 719T 33Z ET {SOD}{CHB}{DLF,HYF,IEF,MSUDF,MDF,DBF}

PITT/BROKEN ROCK FAWN 719 {DLF,HYF,IEF,MSUDF,MDF,DBF}

P43896054

SS HOLLY 42D {DOD}{DLF,HYF,IEF,MDC}

CE	BW	WW	YW	DMI	SC	SCF	MM	M&G	MCE
7.4	1.2	63	104	0.2	0.9	24.4	31	62	0.3
MCW	UDDR	TEAT	CW	FAT	REA	MARB	BMI\$	BIIS	CHBS
112	1.50	1.60	104	0.034	0.99	0.47	543	648	204

18B | BHF 2518 MS GUN SMOKE {DLF,HYF,IEF,MSUDF,MDF,DBF}

P44696777 | Calved: 3/25/25 | Tattoo: RE 2518



JDH AH BENTON 8G ET (CHB) {DLF,HYF,IEF,MSUDF,MDF,DBF}

STELLPLUG GUNSMOKE 222 ET {DLF,HYF,IEF,MSUDF,MDF,DBF}

P44400396

NJW 202C 4013 HOMEMAKER 90H ET {DLF,HYF,IEF,MSUDF,MDF,DBF}

ECC POWERLINE 98E ET {DLF,HYF,IEF,MSUDF,MDF,DBF}

BHF 1904 MS FANNY MAE {HYP,DBP}

P44088304

BHF MS MARIE 1704 {HYP,DBP}

CE	BW	WW	YW	DMI	SC	SCF	MM	M&G	MCE
0.4	3.0	63	107	-0.1	1.2	14.3	25	56	2.9
MCW	UDDR	TEAT	CW	FAT	REA	MARB	BMI\$	BIIS	CHBS
142	1.30	1.30	100	0.034	1.21	0.05	387	457	170

• Homozygous Polled

18C | BHF 2505 MS GUM SMOKE {DLF,HYF,IEF,MSUDF,MDF,DBF}

P44696772 | Calved: 3/1/25 | Tattoo: RE 2505



JDH AH BENTON 8G ET (CHB) {DLF,HYF,IEF,MSUDF,MDF,DBF}

STELLPLUG GUNSMOKE 222 ET {DLF,HYF,IEF,MSUDF,MDF,DBF}

P44400396

NJW 202C 4013 HOMEMAKER 90H ET {DLF,HYF,IEF,MSUDF,MDF,DBF}

MSU TCF REVOLUTION 4R {SOD}{DLF,HYF,IEF,MDF,DBF}

BHF MS MOLLY HOOR {DLF,HYF,IEF,MSUDF,MDF,DBF}

P44178151

BHF 17Y MS DAISY 1302

CE	BW	WW	YW	DMI	SC	SCF	MM	M&G	MCE
-0.8	4.3	64	110	0.2	1.2	10.7	24	56	-1.2
MCW	UDDR	TEAT	CW	FAT	REA	MARB	BMI\$	BIIS	CHBS
129	1.40	1.50	81	0.044	0.90	0.19	305	385	148

• Homozygous Polled



Bramschreiber Hereford Farm
Paul Bramschreiber
Menominee, MI
906-290-1365 • 906-863-2052

Year in and out, the cornerstone of the Hereford Sale at the National Western is the pick of the Delaney/Atkins Pen of Heifers. Jerry and Pete's 2026 Denver pen represents possibly the most elite maternal prospects to date. Backed by the foundation 19Z cow family, this set of females possesses the makeup and all the pieces to become core donors in any program coast to coast.

Leading off this pen is 13N, Homozygous Polled and freckle faced, she is one of the stoutest, deepest bodied Final Print heifers they have ever raised. You will not find many negative BW females made this stout and powerful. Her dam, 18J, is one of their all-time favorites and was Hoffman Ranch's Pick of the Pen in 2022. An elite EPD profile coupled with her powerful phenotype makes this heifer's future truly exciting. Delaney is selling a ½ embryo interest in 13N and will make an outstanding partner to witness the impact this female makes in the breed.

Next up is the Gunsmoke heifer, and daughter of THE matron ... the great 19Z. 19Z has produced numerous sons and daughters that've sold in National sales going to some of the most prominent breeders, including last year's top selling live lot in this event, JDH AH Old Fashioned 25M ET! Outstanding quality in this Homozygous Polled heifer. 45N possesses elite look and style to match her breed leading EPDs and pedigree.

Rounding out this pen is the daughter of the full sister to Lincoln and Mercedes, 34J, who was the high selling female in Atkins & Delaney's Genetic Opportunity Sale at \$30,000 with her natural bull calf demanding \$16,000. This Homozygous Polled, goggle-eyed fancy heifer is sired by the popular Sherman. 2N is sound footed and long bodied with all the look and style you could want.

Selling ½ embryo interest in 19A and retaining two future flushes in 19B and 19C.



JDH AH ND 18J 0016 RITA 13N ET



JDH AH 19Z HOMEMAHER 45N ET



JDH 34J 2157K RUMBLER 2N ET

19A | JDH AH ND 18J 0016 RITA 13N ET {DLF,HYF,IEF,MSUDF,MDF,DBF}

P44663803 | Calved: 1/21/25 | Tattoo: RE 13N

BOYD 31Z BLUEPRINT 6153 {SOD}{DLF,HYF,IEF,MSUDF,MDF,DBF}

RST FINAL PRINT 0016 {CHB}{DLF,HYF,IEF,MSUDF,MDF,DBF}

P44178105

RST MS X651 TESTED 8032 {DLF,HYF,IEF,MSUDF,MDF,DBF}

NJW LONG HAUL 36E ET {SOD}{DLF,HYF,IEF,MSUDF,MDF,DBF}

JDH AH ND 19Z 36E RITA 18J ET {DLF,HYF,IEF,MSUDF,MDF,DBF}

P44260271

AH MS 25L RUMBLER 19Z {DOD}{DLF,HYF,IEF,MSUDF,DBF}



CE	BW	WW	YW	DMI	SC	SCF	MM	M&G	MCE
6.7	-0.5	70	109	0.3	0.7	20.4	38	73	4.7
MCW	UDDR	TEAT	CW	FAT	REA	MARB	BMI\$	BIU\$	CHB\$
89	1.50	1.50	78	0.004	0.65	0.19	435	528	140

19B | JDH AH 19Z HOMEMAHER 45N ET {DLF,HYF,IEF,MSUDF,MDF,DBF}

P44668496 | Calved: 1/25/25 | Tattoo: RE 45N

JDH AH BENTON 8G ET {CHB}{DLF,HYF,IEF,MSUDF,MDF,DBF}

STELLPLUG GUNSMOKE 222 ET {DLF,HYF,IEF,MSUDF,MDF,DBF}

P44400396

NJW 202C 4013 HOMEMAHER 90H ET {DLF,HYF,IEF,MSUDF,MDF,DBF}

BARJZ RUMBLE 525X {DLF,HYF,IEF,DBP}

AH MS 25L RUMBLER 19Z {DOD}{DLF,HYF,IEF,MSUDF,DBF}

P43292936

AH JDH MS 25L WRANGLER 34X ET {DOD}{DLF,HYF,IEF}



CE	BW	WW	YW	DMI	SC	SCF	MM	M&G	MCE
4.4	1.1	66	107	0.3	0.7	16.9	24	57	3.2
MCW	UDDR	TEAT	CW	FAT	REA	MARB	BMI\$	BIU\$	CHB\$
122	1.40	1.50	83	0.044	0.71	0.37	398	496	161

19C | JDH 34J 2157K RUMBLER 2N ET {DLF,HYF,IEF,MSUDF,MDF,DBF}

P44668498 | Calved: 1/16/25 | Tattoo: BE 2N

KCF BENNETT RESOLVE 6595 {CHB}{DLF,HYF,IEF,MSUDF,MDF,DBF}

CHURCHILL W4 SHERMAN 2157K ET {CHB}{DLF,HYF,IEF,MSUDF,MDF,DBF}

P44378036

CHURCHILL LADY 079H ET {DLF,HYF,IEF,MSUDF,MDF,DBF}

JDH VICTOR 719T 33Z ET {SOD}{CHB}{DLF,HYF,IEF,MSUDF,DBF}

JDH AH 19Z MS RUMBLER 34J ET {DLF,HYF,IEF,MSUDF,MDF,DBF}

P44242708

AH MS 25L RUMBLER 19Z {DOD}{DLF,HYF,IEF,MSUDF,DBF}



CE	BW	WW	YW	DMI	SC	SCF	MM	M&G	MCE
8.4	-1.1	57	89	0.4	1.2	26.0	28	56	0.8
MCW	UDDR	TEAT	CW	FAT	REA	MARB	BMI\$	BIU\$	CHB\$
74	1.40	1.60	70	0.054	0.36	0.31	496	590	129



DELANEY HEREFORDS

Jerry and Shelly Delaney Family
2071 Co. Rd. 101
Lake Benton, MN 56149
Jerry Delaney 507-820-0661
jdh@delaneyherefords.com
www.delaneyherefords.com



Atkins Herefords
27132 SD Hwy. 17
Tea, SD 57064
Pete Atkins 605-351-9847
petea15@gmail.com
www.atkinsherefords.com

This pen of heifers from Kevin and Courtney Ernst is proof that great cattle don't have to come from far away. This pen of 1/2 and 3/4 sisters are sired by the Ernst family's selection from the 2024 edition of this sale, a powerful Endure son that is out of none other than the "Mother of Herd Bulls," 45C!

First up in this pen is a Homozygous Polled female that offers the largest spread from calving ease to growth in the pen. In addition, she ranks in the top 3% of the breed for MARB, top 1% for BMI and top 1% for CHB.

The second heifer is the calving ease option in the pen, with a CE figure ranking in the top 2% of the breed while remaining near breed average for her growth numbers. Top 1% in both her UDDR and TEAT figures, she offers a whopping \$600 for her BMI index! She's Homozygous Polled and possesses great carcass numbers with her REA in the top 20%, MARB & CHB in the top 3% of the breed.

Rounding out the pen is another heifer out of a Power Broker cow. While not extreme in her production numbers, she's well balanced with all her traits well above breed average. Like her sisters, she offers exceptional carcass and stayability numbers.

No matter which choice is made, this pen of future donor prospects offers breed leading stayability, maternal and carcass numbers to match their production. One of the very best set of females to come from the Ernst program.



ERNST MS ENDURE 506



ERNST MS DOLLY 504



ERNST MS ENDURANCE 508

20A | ERNST MS ENDURE 506 {DLF,HYF,IEF,MSUDF,MDF,DBF}

P44653717 | Calved: 3/1/25 | Tattoo: BE 506



NJW 79Z Z311 ENDURE 1730 ET (SOD)(CHB)(DLF,HYF,IEF,MSUDF,MDF,DBF)

CCCC ENDURE 45C312LE {DLF,HYF,IEF,MSUDF,MDF,DBF}

P44486249

JDH AH MS 34X VICTOR 33245C ET (DLF,HYF,IEF,MSUDF)

BAR STAR FRESH PRINCE 018 ET (DLF,HYF,IEF,MSUDF,MDF,DBF)

ERNST MS REBEL 232 {DLF,HYF,IEF,MSUDF,DBP}

P44358164

ERNST MS 163Z TRUST 458 (DLF,HYF,IEF,DBP)

CE	BW	WW	YW	DMI	SC	SCF	MM	M&G	MCE
6.7	1.3	63	107	0.3	1.6	27.0	38	69	4.8
MCW	UDDR	TEAT	CW	FAT	REA	MARB	BMI\$	BIIS	CHBS
80	1.30	1.40	96	0.034	0.64	0.48	563	673	192

20B | ERNST MS DOLLY 504 {DLF,HYF,IEF,MSUDF,MDF,DBF}

P44653710 | Calved: 3/1/25 | Tattoo: BE 504



NJW 79Z Z311 ENDURE 1730 ET (SOD)(CHB)(DLF,HYF,IEF,MSUDF,MDF,DBF)

CCCC ENDURE 45C312LE {DLF,HYF,IEF,MSUDF,MDF,DBF}

P44486249

JDH AH MS 34X VICTOR 33245C ET (DLF,HYF,IEF,MSUDF)

CMF ERNST POWER BROKER 405F (DLF,HYF,IEF,MSUDF,MDF)

ERNST MS POWER BROKER 119

P44292547

ERNST MS VICTOR 3329101 (DLF,HYF,IEF,MSUDF)

CE	BW	WW	YW	DMI	SC	SCF	MM	M&G	MCE
13.2	-2.6	55	80	0.3	0.8	30.6	31	58	3.5
MCW	UDDR	TEAT	CW	FAT	REA	MARB	BMI\$	BIIS	CHBS
50	1.60	1.70	85	0.024	0.61	0.48	593	698	169

20C | ERNST MS ENDURANCE 508 {DLF,HYF,IEF,MSUDF,MDF,DBF}

P44653724 | Calved: 3/9/25 | Tattoo: BE 508



NJW 79Z Z311 ENDURE 1730 ET (SOD)(CHB)(DLF,HYF,IEF,MSUDF,MDF,DBF)

CCCC ENDURE 45C312LE {DLF,HYF,IEF,MSUDF,MDF,DBF}

P44486249

JDH AH MS 34X VICTOR 33245C ET (DLF,HYF,IEF,MSUDF)

CMF ERNST POWER BROKER 405F (DLF,HYF,IEF,MSUDF,MDF)

ERNST MS POWER BROKER 350 {DLF,HYF,IEF,MSUDF,MDF,DBF}

P44458303

ERNST 5111 MS SENTRY 888 (DBP)

CE	BW	WW	YW	DMI	SC	SCF	MM	M&G	MCE
5.0	2.5	64	91	0.4	1.0	24.0	27	59	5.0
MCW	UDDR	TEAT	CW	FAT	REA	MARB	BMI\$	BIIS	CHBS
80	1.50	1.50	84	0.004	0.85	0.38	501	602	160



Ernst Herefords

34436 CR 29, Greeley, CO 80631

Kevin and Courtney Ernst: 970-218-7140

info@ernstherefords.com

Making their return to the National Western, Genoa Livestock's Pen of Three Females represents the very best to walk in Carson Valley, NV. This will be their third pen at the National Western, and their first two entries were among the top sellers in the sale. This year's pen is centered around the most impactful female ever to walk at Genoa's ... 5047.

First up is a Vista daughter that is out of the newest donor for Genoa, 22150. This 5047 daughter is positioned as the replacement for her dam going forward and is already off to a great start with her first calf being among the high sellers in this past fall's bull sale. A daughter of the maternal powerhouse Key West, 22150, was a member of the Genoa Pen of Three Females in 2023. Just look at the figures on this Vista daughter ... massive stayability index, along with elite carcass numbers and great balance on her production EPDs.

Next up is a daughter of the maternal great herself, 5047! This Cuda Belle offers exceptional calving ease along with great maternal indices and carcass EPDs. You won't find many more opportunities to acquire 5047 daughters.

Rounding out the pen is another Vista daughter out of a flush sister to the first heifer. 25020 offers the most growth of these pen heifers with a 511 \$BMI!

Genoa will retain two(2) flushes with a minimum of twelve(12) embryos. Videos will be available on their website towards the end of December.

This pen of donor prospects is stacked with proven maternal greats on both the top and bottom of their pedigrees. No matter how hard I try, Bob and Chris only ever let us sell one of these picks ... don't hesitate!

21A | GENOA MISS 147L VISTA 25024 ET {DLF,HYF,IEF,MSUDF,MDF,DBF}

P44643873 | Calved: 2/22/25 | Tattoo: LE 5024



CHURCHILL DESPERADO 029H (CHB) {DLF,HYF,IEF,MSUDF,MDF,DBF}
 NJW 79Z 029H VISTA 147L ET (CHB) {DLF,HYF,IEF,MSUDF,MDF,DBF}
 P44486345 BW 91H 100W RITA 79Z ET {DLF,HYF,IEF,MSUDF,MDF}
 C KEY WEST 0065 {CHB} {DLF,HYF,IEF,MSUDF,MDF}
 GENOA MS 0065 KEY WEST 22150 ET {DLF,HYF,IEF,MSUDF,MDF}
 P44337604 GENOA MISS HOMETOWN 10Y 15047 {DLF,HYF,IEF,MSUDF,MDF}

CE	BW	WW	YW	DMI	SC	SCF	MM	M&G	MCE
8.9	3.1	62	104	0.2	0.9	28.7	35	66	3.1
MCW	UDDR	TEAT	CW	FAT	REA	MARB	BMI\$	BIIS	CHBS
91	1.50	1.50	92	0.044	0.63	0.40	581	687	179



GENOA MISS 147L VISTA 25024 ET

21B | GENOA MS CUDABELLE 25021 ET {DLF,HYF,IEF,MSUDF,MDF,DBF}

P44643843 | Calved: 2/21/25 | Tattoo: LE 5021



C BARRACUDA 0114 ET (CHB) {DLF,HYF,IEF,MSUDF,MDF,DBF}
 C CUDABELLE 2111 {DLF,HYF,IEF,MSUDF,MDF,DBF}
 P44359805 C LADY BELL ADVANCE 0053 {DLF,HYF,IEF,MSUDF,MDF}
 NJW 73S W18 HOMETOWN 10Y ET (SOD) {CHB} {DLF,HYF,IEF,MSUDF,MDF}
 GENOA MISS HOMETOWN 10Y 15047 {DLF,HYF,IEF,MSUDF,MDF}
 P43585109 HYALITE SLASS 547 {DLF,HYP}

CE	BW	WW	YW	DMI	SC	SCF	MM	M&G	MCE
5.2	-0.2	55	89	0.2	0.9	18.4	37	64	0.3
MCW	UDDR	TEAT	CW	FAT	REA	MARB	BMI\$	BIIS	CHBS
88	1.40	1.40	73	0.034	0.45	0.41	406	498	150



GENOA MS CUDABELLE 25021 ET

21C | GENOA MISS 147L VISTA 25020 {DLF,HYF,IEF,MSUDF,MDF,DBF}

P44643882 | Calved: 2/21/25 | Tattoo: LE 5020



CHURCHILL DESPERADO 029H (CHB) {DLF,HYF,IEF,MSUDF,MDF,DBF}
 NJW 79Z 029H VISTA 147L ET (CHB) {DLF,HYF,IEF,MSUDF,MDF,DBF}
 P44486345 BW 91H 100W RITA 79Z ET {DLF,HYF,IEF,MSUDF,MDF}
 C KEY WEST 0065 {CHB} {DLF,HYF,IEF,MSUDF,MDF}
 GENOA MS 0065 KEY WEST 22265 ET {DLF,HYF,IEF,MSUDF,MDF}
 P44388462 GENOA MISS HOMETOWN 10Y 15047 {DLF,HYF,IEF,MSUDF,MDF}

CE	BW	WW	YW	DMI	SC	SCF	MM	M&G	MCE
3.4	3.2	65	108	0.2	1.5	25.5	37	70	0.0
MCW	UDDR	TEAT	CW	FAT	REA	MARB	BMI\$	BIIS	CHBS
111	1.40	1.40	81	0.014	0.66	0.07	510	594	135



GENOA MISS 147L VISTA 25020



GENOA MISS HOMETOWN 10Y 15047

GENOA LIVESTOCK

Genoa Livestock
 640 Genoa Lane, Minden, NV 89423
 775-782-3336
 Bob Coker 916-539-1987
 Chris Beck 618-367-5397
www.genoalivestock.com

In visiting with Grant four years ago when this sale began, we told him this event will be based around "cow prospects." One of the most dependable things year in and out was that the heifer pen from GLM Herefords will feature females with one goal in mind ... go out and make tremendous cows/donors for their new owners. Perhaps one of my favorite things about the GLM pen year in and out is that none of these heifers are ET females. Simply put, they are the best females out of Grant, Linda and Bailey's best cows.

Leading off the pen this year is a daughter of Bullnanza, who was the first in a lineup of great sons of the immortal 7098 cow from Birdwell/Churchill. 7098 influenced females have seen the highest demand in the breed, and Powercat 2513 is no exception. She's out of a first calf heifer that ratioed 119 at weaning, and the best heifer GLM has ever raised ... period. She offers elite growth numbers along with a great REA EPD, with index figures in the top 25% of the breed.

The next heifer in this lineup is sired by a Vanguard son out of the dam of SR Dominate that while not extreme in her number profile, she is potentially the most balanced in her numbers. Also, she's the highest Marbling female in the pen. In addition, she's also the top female of the GLM lineup for her stayability index. Her dam has been an excellent producer, posting progeny ratios of 4@102 for WW, 2@106 for YW, 2@102 for REA and 2@105 for IMF.

The third choice of this great pen of females is the Homozygous Polled daughter of GLM's home raised herd sire, Brute Force. He was a highly talked about member of GLM's pen in 2024, and this heifer is the first daughter to be offered for sale. Tremendous phenotype to this young March heifer, she also stems from one of the top producing cows walking the pasture in Marysville, KS. 2544's Mr. Canada dam has posted progeny ratios of 5@108 for WW and 2@101 for YW.

When evaluating replacement females in current times, this pen of heifers based around highly productive cows are the type that make money in production, year in and out.



GLM 0552 POWERCAT 2513

22A | GLM 0552 POWERCAT 2513 {DLF,HYF,IEF,MSUDF,MDF,DBF}

P44681737 | Calved: 2/8/25 | Tattoo: BE 2513



CHURCHILL BROADWAY 858F {CHB}{DLF,HYF,IEF,MSUDF,MDF,DBF}

BIRDWELL BULLNANZA 7098 0552ET {CHB}{DLF,HYF,IEF,MSUDF,MDF}

P44254853 BR VALIDATED B413 6035 7098 {DLF,HYF,IEF,MSUDF,MDF,DBF}

WLB MR CANADA 102 15B {SOD}{DLF,HYF,IEF,MSUDF,MDF,DBF}

GLM 15B POWERCAT 2322 {DLF,HYF,IEF,MSUDF}

P44489329 GLM 04B POWERCAT 1931 {DLF,HYF,IEF,MSUDF}

CE	BW	WW	YW	DMI	SC	SCF	MM	M&G	MCE
-1.4	3.9	72	110	0.5	0.9	19.9	34	70	5.3
MCW	UDDR	TEAT	CW	FAT	REA	MARB	BMI\$	BIIS	CHBS
118	1.30	1.30	86	0.034	0.84	0.14	433	523	137

22B | GLM 360L ADORA 2535 {DLF,HYF,IEF,MSUDF,MDF,DBF}

P44681746 | Calved: 2/21/25 | Tattoo: BE 2535



BIRDWELL VANGUARD 5022 9337 {CHB}{DLF,HYF,IEF,MSUDF,MDF,DBF}

CHURCHILL VANGUARD 360L ET {DLF,HYF,IEF,MSUDF,MDF,DBF}

P44462336 CHURCHILL LADY 1162Y ET {DLF,HYF,IEF,MSUDF,MDF}

C SPECIAL EDITION 6105 ET {DLF,HYF,IEF,MSUDF,MDF,DBF}

RJLLCC ADORA 312H ET {DLF,HYF,IEF,MSUDF}

44165800 BBH 743 ADORA 339A {DLF,HYF,IEF,MSUDF}

CE	BW	WW	YW	DMI	SC	SCF	MM	M&G	MCE
-1.7	3.3	58	88	0.2	1.2	21.0	33	62	2.2
MCW	UDDR	TEAT	CW	FAT	REA	MARB	BMI\$	BIIS	CHBS
98	1.30	1.30	67	-0.026	0.77	0.27	442	527	134

22C | GLM 2317 GOLD LASSIE 2544 {DLF,HYF,IEF,MSUDF,MDF,DBF}

P44681250 | Calved: 3/5/25 | Tattoo: BE 2544



CSC 508 508 BRAWN 704 {DLF,HYF,IEF,MSUDF,MDF}

GLM MCM BRUTE FORCE 2317 {DLF,HYF,IEF,MSUDF,MDF,DBF}

P44487790 GLM 33B MISS KEYNOTE 2027 {DLF,HYF,IEF,MSUDF}

WLB MR CANADA 102 15B {SOD}{DLF,HYF,IEF,MSUDF,MDF,DBF}

GLM 15B GOLD LASSIE 1837 {DLF,HYF,IEF,MSUDF}

P43920447 GLM 477T GOLD LASSIE 207 {DLF,HYF,IEF,MSUDF,DBF}

CE	BW	WW	YW	DMI	SC	SCF	MM	M&G	MCE
3.5	3.4	62	104	0.5	0.5	18.9	41	72	6.8
MCW	UDDR	TEAT	CW	FAT	REA	MARB	BMI\$	BIIS	CHBS
95	1.20	1.20	68	0.034	0.11	-0.06	370	441	92



GLM 360L ADORA 2535



GLM 2317 GOLD LASSIE 2544



GLM Herefords
1226 8th Rd., Marysville, KS 66508
Grant and Linda McKay
Grant 308-470-1190

**KOLT BLUEBERRY WINE 52N ET**

TFR KU ROLL THE DICE 1326 (CHB) (DLF,HYF,IEF,MSUDF,MDF,DBF)
CH HIGH ROLLER 756 ET (DLF,HYF,IEF,MDF,DBF)
 P43875385
 CH MAGIE 8023 (DLF,HYF,IEF)
 K RUSTIC 711 ET (DLF,HYF,IEF,MSUDF,DBP)
KOLT FINAL WINE 501 ET (DLF,HYF,IEF,MSUDF,DBP)
 44076427
 CHEZ STRAWBERRY WINE ET 204Z (DLF,HYF,IEF,DBP)



23A | KOLT BLUEBERRY WINE 52N ET {DLF,HYF,IEF,MSUDF,MDF,DBF}

44704698 | Calved: 5/13/25 | Tattoo: LE 52N

CE	BW	WW	YW	DMI	SC	SCF	MM	M&G	MCE
-1.3	3.9	61	103	0.1	0.8	16.3	37	67	-0.8
MCW	UDDR	TEAT	CW	FAT	REA	MARB	BMI\$	BIIS	CHBS
118	1.30	1.20	106	0.014	0.80	-0.06	399	463	157

23B | KOLT FINAL WINE 29 ET {DBP}

44708995 | Calved: 5/3/25 | Tattoo: LE 29

CE	BW	WW	YW	DMI	SC	SCF	MM	M&G	MCE
-2.2	4.1	61	102	0.1	1.0	16.0	34	64	-2.1
MCW	UDDR	TEAT	CW	FAT	REA	MARB	BMI\$	BIIS	CHBS
114	1.30	1.20	99	0.014	0.77	-0.03	387	454	150

23C | KOLT MS ROLLER 30 ET {DBP}

P44708999 | Calved: 5/25/25 | Tattoo: LE 30

CE	BW	WW	YW	DMI	SC	SCF	MM	M&G	MCE
-2.2	4.1	61	102	0.1	1.0	16.0	34	64	-2.1
MCW	UDDR	TEAT	CW	FAT	REA	MARB	BMI\$	BIIS	CHBS
114	1.30	1.20	99	0.014	0.77	-0.03	387	454	150



Kolt Cattle Co., LLC
 Nate Kolterman
 520 South Evergreen Drive
 Seward, NE 68434
 402-641-0146
koltcattle.com

Each and every year, Nate Kolterman is known for raising and bringing some of the very best females to the National Western, and this pen of May heifers is no exception. In a division that's wide open, this pen of heifers from KOLT is destined for the backdrop this summer show season.

High Roller was the 2019 Reserve Champion Polled Bull at Fort Worth and following his show career he has gone on to potentially be the #1 sire in the breed for producing show heifers. Over the past several years, High Roller progeny have dominated both national shows, as well as regional shows.

The dam of these ET sisters is out of the world-famous Strawberry Wine that was the 2014 Reserve Grand Champion Polled Heifer at the National Western and is part of the notorious Sweet Red Wine family. Sired by past lead bull in NWSS Champion Pen of Bulls, Final Wine 501 has produced the very top selling females in Nate's Simple Choices sales, and this pen of heifers continues in that tradition.

**KOLT FINAL WINE 501 ET**

Making the short trip from Cheyenne is a top-quality set of cow prospects from Sticks & Stones Ranch. Gene couldn't decide between these six heifers on how to comprise a pen, so he just decided to bring two pens of heifers!

With six heifers, we don't have much room to waste writing about these girls ... but the biggest thing to note is there isn't a hole anywhere. Five Shermans, one Big Jake and a set of numbers that are complete, balanced, and in the upper reaches of the breed. Study this set of cow prospects in the Yards ... they are the type that will help rebuild the cowherd in America.



GCS TIFFANY 517

24A | GCS TIFFANY 517

P44694707 | Calved: 3/25/25 | Tattoo: RE 517

KCF BENNETT RESOLVE G595 (CHB)(DLF,HVF,IEF,MSUDF,MDF,DBF)

CHURCHILL W4 SHERMAN 2157K ET (CHB)(DLF,HVF,IEF,MSUDF,MDF,DBF)

P44378036

CHURCHILL LADY 079H ET (DLF,HVF,IEF,MSUDF,MDF,DBF)

CHURCHILL BROADWAY 858F (CHB)(DLF,HVF,IEF,MSUDF,MDF,DBF)

GCS BROADWAY MERYL 017

P44163975

TS LIPSTICK 317 (DLF,HVF,IEF)

CE	BW	WW	YW	DMI	SC	SCF	MM	M&G	MCE
-1.7	3.5	63	105	0.2	0.9	19.4	27	59	2.4
MCW	UDDR	TEAT	CW	FAT	REA	MARB	BMI\$	BIIS	CHBS
104	1.30	1.40	83	0.084	0.64	0.39	432	532	159



GCS MISTY BLU 504

24B | GCS MISTY BLU 504

P44694703 | Calved: 2/22/25 | Tattoo: RE 504

KCF BENNETT RESOLVE G595 (CHB)(DLF,HVF,IEF,MSUDF,MDF,DBF)

CHURCHILL W4 SHERMAN 2157K ET (CHB)(DLF,HVF,IEF,MSUDF,MDF,DBF)

P44378036

CHURCHILL LADY 079H ET (DLF,HVF,IEF,MSUDF,MDF,DBF)

GCS GRANDSTAND 801 (DLF,HVF,IEF,MSUDF)

GCS HEY CARRIE ANN 004 (DLF,HVF,IEF,MSUDF,MDF)

44164000

GCS SISTER CHRISTIAN 804 (DLF,HVF,IEF)

CE	BW	WW	YW	DMI	SC	SCF	MM	M&G	MCE
5.3	1.6	62	97	0.3	1.0	21.2	30	61	3.9
MCW	UDDR	TEAT	CW	FAT	REA	MARB	BMI\$	BIIS	CHBS
81	1.30	1.40	80	0.044	0.68	0.30	448	541	147



GCS FAITH 516

24C | GCS FAITH 516

P44694722 | Calved: 3/23/25 | Tattoo: RE 516

KCF BENNETT RESOLVE G595 (CHB)(DLF,HVF,IEF,MSUDF,MDF,DBF)

CHURCHILL W4 SHERMAN 2157K ET (CHB)(DLF,HVF,IEF,MSUDF,MDF,DBF)

P44378036

CHURCHILL LADY 079H ET (DLF,HVF,IEF,MSUDF,MDF,DBF)

CHURCHILL GALLATIN 521IC ET (DLF,HVF,IEF,MSUDF)

GCS VENUS 223

44389420

TS BOMBSHELL 401 (DOB)(DLF,HVF,IEF,MSUDF)

CE	BW	WW	YW	DMI	SC	SCF	MM	M&G	MCE
3.8	1.2	62	96	0.4	1.1	20.7	30	61	2.3
MCW	UDDR	TEAT	CW	FAT	REA	MARB	BMI\$	BIIS	CHBS
83	1.40	1.40	82	0.044	0.79	0.37	446	543	153

24D | GCS COLYDASCOPE EYES 523 {HYP}

P44694717 | Calved: 4/5/25 | Tattoo: RE 523

KCF BENNETT RESOLVE G595 {CHB}{DLF,HYF,IEF,MSUDF,MDF,DBF}
CHURCHILL W4 SHERMAN 2157K ET {CHB}{DLF,HYF,IEF,MSUDF,MDF,DBF}
P44378036 CHURCHILL LADY 079H ET {DLF,HYF,IEF,MSUDF,MDF,DBF}

GCS COWBOY JOE 014 {DLF,HYF,IEF,MSUDF}
GCS LADY WILLPOWER 203 {HYP}
P44389455 GCS GALLATESS 023 {HYP}

CE	BW	WW	YW	DMI	SC	SCF	MM	M&G	MCE
2.2	1.9	60	95	0.2	1.1	21.3	33	63	0.6
MCW	UDDR	TEAT	CW	FAT	REA	MARB	BMI\$	BIIS	CHBS
81	1.30	1.40	79	0.034	0.73	0.35	455	549	153



CHURCHILL W4 SHERMAN 2157K ET

24E | GCS QUEEN OF HEARTS 512

P44694745 | Calved: 3/12/25 | Tattoo: RE 512

KCF BENNETT RESOLVE G595 {CHB}{DLF,HYF,IEF,MSUDF,MDF,DBF}
CHURCHILL W4 SHERMAN 2157K ET {CHB}{DLF,HYF,IEF,MSUDF,MDF,DBF}
P44378036 CHURCHILL LADY 079H ET {DLF,HYF,IEF,MSUDF,MDF,DBF}

CHURCHILL GALLATIN 5211C ET {DLF,HYF,IEF,MSUDF}
GCS BEACH BABY 812
43928166 ARS MISS KEY NOTE 710 {DLF,HYF,IEF}

CE	BW	WW	YW	DMI	SC	SCF	MM	M&G	MCE
0.1	3.1	60	94	0.2	0.8	19.5	26	55	-1.0
MCW	UDDR	TEAT	CW	FAT	REA	MARB	BMI\$	BIIS	CHBS
83	1.30	1.40	78	0.034	0.78	0.30	426	515	148



GCS QUEEN OF HEARTS 512

24F | GCS CINNAMON GIRL 505

P44694719 | Calved: 2/22/25 | Tattoo: RE 505

CHURCHILL RED BARON 8300F ET {DLF,HYF,IEF,MSUDF,MDF,DBF}
CHURCHILL BIG JAKE 0265H ET {DLF,HYF,IEF,MSUDF,MDF}
P44198619 SR CCC LADYSPORT 2205 Z ET {DLF,HYF,IEF}

GCS COWBOY JOE 014 {DLF,HYF,IEF,MSUDF}
GCS RED FLARE 204
P44389452 GCS BROADWAY MERYL 017

CE	BW	WW	YW	DMI	SC	SCF	MM	M&G	MCE
-1.7	4.6	70	122	0.5	1.3	17.6	30	65	1.8
MCW	UDDR	TEAT	CW	FAT	REA	MARB	BMI\$	BIIS	CHBS
118	1.30	1.20	85	0.024	0.49	0.00	382	463	126



GCS CINNAMON GIRL 505

STICKS & STONES RANCH

Sticks & Stones Ranch
Gene and Cindy Stillahn and family
307-421-1592
stickstillahn@gmail.com
3902 CR 203
Cheyenne, WY 82007

Each year, Storey Hereford Ranch brings a pen of females from the Big Sky Country that is the talk of Denver. Katelyn, Chuck and the family's pen is always the perfect blend of style, eye appeal and pedigree. The four heifers this year with the first Reign Makers to feature in this event, and an Arlo daughter.



SHR 9047 REIGN 5081 ET

25A | SHR 9047 REIGN 5081 ET {DLF,HYF,IEF,MSUDF,MDF,DBF}
P44686112 | Calved: 2/1/25 | Tattoo: LE 5081



SIRE: P44475885 **C REIGN MAKER 3210 ET** {DLF,HYF,IEF,MSUDF,MDF,DBF}
DAM: P44067011 **SHR 5129C 513ET DIANA 9047 ET** {DLF,HYF,IEF,MSUDF,MDF,DBF}

CE	BW	WW	YW	DMI	SC	SCF	MM	M&G	MCE
-1.5	5.3	69	107	0.4	1.0	21.9	32	66	-0.4
MCW	UDDR	TEAT	CW	FAT	REA	MARB	BMI\$	BIIS	CHBS
92	1.40	1.40	86	-0.036	0.91	-0.06	455	529	127

- Let. It. Reign. This Reign Maker daughter is by far one of the most incredible specimens to walk the pastures of Storey Hereford Ranch. She is stunning. It is extremely hard to find one with this much growth potential, rib shape, and flexibility, and has the length of spine that goes on for days. She is marked right, polled, and boy has she turned some heads. We are proud to introduce this one to the world.



SHR 2135 QUEENPIN 5077 ET

25C | SHR 2135 QUEENPIN 5077 ET {DLF,HYF,IEF,MSUDF,MDF,DBF}
P44686115 | Calved: 1/31/25 | Tattoo: LE 5077



SIRE: P44359827 **CARLO 2135 ET** {CHB}{DLF,HYF,IEF,MSUDF,MDF,DBF}
DAM: P43611220 **SULL DIANA 5129C ET** {DLF,HYF,IEF,MSUDF,MDF,DBF}

CE	BW	WW	YW	DMI	SC	SCF	MM	M&G	MCE
1.0	4.9	61	103	-0.1	1.5	16.6	39	70	0.6
MCW	UDDR	TEAT	CW	FAT	REA	MARB	BMI\$	BIIS	CHBS
99	1.20	1.10	92	-0.016	0.96	0.24	417	500	179

- How in the world does one "lot order" four different heifers that are all extraordinary in their own ways? This Arlo daughter may land in the Lot C position but make no mistake — do not gloss over her, or you will regret it. Woofy, sound, powerful, and elegant are the four words that should define this dark cherry, heavy-pigmented lady. She's one of the most intriguing Arlo females we have had the privilege to offer, an elite combination of show ring look, with real cow power. With an impressive 182 CHB EPD and standout maternal traits, it is simply hard to make one like this.



SHR 3210 REIGN 5053 ET

25B | SHR 3210 REIGN 5053 ET {DLF,HYF,IEF,MSUDF,MDF,DBF}
44686121 | Calved: 1/24/25 | Tattoo: LE 5053



SIRE: P44475885 **C REIGN MAKER 3210 ET** {DLF,HYF,IEF,MSUDF,MDF,DBF}
DAM: P43611220 **SULL DIANA 5129C ET** {DLF,HYF,IEF,MSUDF,MDF,DBF}

CE	BW	WW	YW	DMI	SC	SCF	MM	M&G	MCE
3.7	1.5	52	79	-0.1	0.7	26.2	35	61	3.4
MCW	UDDR	TEAT	CW	FAT	REA	MARB	BMI\$	BIIS	CHBS
64	1.40	1.40	79	-0.026	0.89	0.10	524	595	140

- Just like that, C Reign Maker 3210 ET strikes again. This horned Reign Maker female is as cool as it gets. Not only does she have such an incredible shape to her center body, this heifer is long bodied, sound as a cat, and has the neatest front end to pair with it all. Additionally, this female is ranked in the top 10% of the breed in over 8 categories. With a birthweight EPD of 1.5, a BMI of 529 and BII of 600, this girl just cannot miss.



SHR 5129C RAYNA 5088 ET

25D | SHR 5129C RAYNA 5088 ET {DLF,HYF,IEF,MSUDF,MDF,DBF}
P44686108 | Calved: 2/3/25 | Tattoo: LE 5088



SIRE: P44475885 **C REIGN MAKER 3210 ET** {DLF,HYF,IEF,MSUDF,MDF,DBF}
DAM: P43611220 **SULL DIANA 5129C ET** {DLF,HYF,IEF,MSUDF,MDF,DBF}

CE	BW	WW	YW	DMI	SC	SCF	MM	M&G	MCE
-0.9	3.2	59	96	-0.1	1.1	24.6	34	64	2.8
MCW	UDDR	TEAT	CW	FAT	REA	MARB	BMI\$	BIIS	CHBS
114	1.40	1.30	80	-0.026	0.74	0.17	512	594	151

- The "Queen Bee," is how we refer to this striking female. Marked as a queen should be, this polled FULL sib to Lot B is most certainly special and something to be very excited about. Long, dark cherry red, and just easy to look at, this sweetheart of a female makes me very excited to share this Pick of Pen with you. Every single one of these females absolutely slays, it's just up to you to pick your favorite, and goodness, that is no easy task!



Storey Hereford Ranch
10069 River Road, Bozeman, MT 59718
Chuck and Kathy Kohlbeck
Chuck 406-580-8255
Katelyn Kohlbeck • 406-580-9565

NJW

POLLED HEREFORDS

— ANNUAL SALE —
MARCH 25, 2026

JF

Bulls Raised on Good Cows & Wyoming/Montana Range (no creep)! We DEMAND our Cows have GOOD udders, be GREAT Mothers and Calves be VIGOROUS at Birth!



HEREFORDS FOR TODAY'S CATTLEMEN ...Thick, Long Lasting, Durable, Money Makers!



A Commercial Customer-Driven Program!

It is our firm belief, when Breeding Cattle, the "Balanced Trait Approach" is the right one! We want as much performance as we can get while maintaining that "Critical Balance" of calving ease, cowherd and feedlot efficiency and proven carcass value. All the while, never forgetting the "Unmeasured Traits" of structural soundness, udder quality and attachment, mothering ability, vigor at birth, disposition, fertility and longevity.



NJWherefords.com

THE
NED & JAN WARD
QUALITY PROGRAM

Call or email for catalog! • njwardherefords@gmail.com

Ned (c) 307/ 751-8298 • Jan (c) 307/ 751-9470

Bell Ward (c) 307/751-6922 • Mail: PO Box B, Sheridan, WY 82801

NORTH RANCH: 2637 Adsit Rd. • Decker, MT 59025 • SOUTH RANCH: 888 Lower Prairie Dog Rd. • Sheridan, WY 82801



NATIONAL WESTERN

Hereford Sale

1.16.26

HEREFORDS

in the yards