

CHURCHILL CATTLE COMPANY'S

World Class
BULL SALE

TUESDAY, JANUARY 28, 2025

1 P.M. AT THE RANCH IN MANHATTAN, MONTANA







Welcome

TO OUR 2025 WORLD CLASS BULL SALE!

We want to extend a very hearty welcome to each of you to attend our Bull Sale January 28! We are very excited about the offering this year and what these bulls can do for your bottom line. We certainly appreciate your past support and look forward to discussing how to meet your program's needs this year.

This offering includes a wide variety of high quality polled and horned bulls, whether you need one or a truckload. We work hard to offer you functional and practical bulls with a high level of multi trait performance in the profit areas. The average bull in this sale ranks in the top 7% of all Herefords for the Baldy Maternal Index or BMI which is basically a ranch profit index. The average bull ranks in the top 5% for the CHB index which means a lot to your calf buyers. In addition to these data points you will find bulls here that are hard and sound and show exceptional length and thickness. These bulls have the eye appeal to sire calves that will bring top dollar on the video or in the sale barn!

We have three new sires represented in this sale that are certainly exceptional. They are Churchill W4 Sherman, Birdwell New Standard, and CL 1 Domino 267K. These sires are breed and industry leaders and they will move your program forward.

We've done the hard work to associate Churchill Cattle with strong efficiency and performance, carcass quality, and the maternal traits like fertility and high quality udders. Therefore, when marketing your Churchill sired feeder calves and replacement females, buyers will recognize the quality of your genetics. Nothing means more at sale time than reputation!

Nancy and I are here to help you. Don't be afraid to contact Colby or Megan or Shiloh either. We are very thankful for and proud of these young people who work with these bulls and cows every day!

WE HOPE TO SEE YOU AT THE SALE!

Dale & Nancy

www.CHURCHILLCATTLE.COM

Dale's Cell 406-580-6421 • *Nancy's Cell* 406-580-3715
Home 406-284-6421 • ChurchillCattle@gmail.com

SALE INFORMATION

SALE DAY PHONES

Dale Venhuizen	406-580-6421
Nancy Venhuizen	406-580-3715
Ron Frye, <i>Ron Frye Marketing</i>	406-600-7514
Colby Atchison	406-320-0211
Megan Leep	406-600-4173
Shiloh Klein	701-891-9469

AUCTIONEER

Joe Goggins	406-861-5664
-------------	--------------

SALE REPRESENTATIVES

Kevin Murnin, <i>Hereford World</i>	406-853-4638
John Goggins, <i>Western Livestock Reporter</i>	406-698-4159
Marc + Jill Hotchkiss, <i>Hereford America</i>	605-490-1409
Devin Murnin, <i>Western Livestock Journal</i>	406-696-1502
Steve Price	307-630-9269
Dwayne Dietz	406-672-8500

HEREFORD REPRESENTATIVES

Jack Ward	<i>AHA Executive Vice President</i>
Shane Bedwell, 620-886-1050	<i>AHA Chief Operating Officer</i>
Chad Breeding	<i>AHA President</i>

SPECIAL THANK YOU

Trans Ova Genetics	<i>Advanced Reproductive Services</i>
Morgan Meisenheimer	<i>Graphic Design & Photography</i>
Katie Songer	<i>Videography</i>

VIDEOS

View videos at ChurchillCattle.com & Superior Productions.

HEALTH

The health of the herd is excellent. We guarantee that all sale cattle will ship to any state or Canadian province. All females are officially calthood Bangs vaccinated. All cattle are on a complete pre-conditioning & herd health program.

Dr. Nick Johnson, <i>Veterinarian</i>	406-388-6275
---------------------------------------	--------------

TERMS

Terms of the sale are cash unless other arrangements are made before the sale with Dale or Nancy Venhuizen. Every animal will be sold to the highest bidder with the auctioneer settling disputes. All cattle are the buyer's property as soon as sold and will be cared for a reasonable length of time at the buyer's risk. Neither Churchill Cattle Co. nor any person connected to this sale assumes any liability, legal or otherwise.

GUARANTEE

All bulls are guaranteed as sound and healthy breeders at the start of their first season. Bulls sold for \$5,000 + will be given an unconditional first season breeding guarantee.

If an injury or loss occurs in the first 90 days of breeding, the buyer will receive 50% of the value of the injured bull, minus any salvage value, in a future sale or towards a replacement bull if one is available. All injured bulls must be diagnosed by a veterinarian.

All claims must be made by September 1, 2025.

WINTERING OF BULLS

We will keep any sale bull until April 1 and feed them at no cost to the buyer. We do believe it is good for your bulls to get adjusted to their new home as soon as possible. We recognize that the purchase of bulls is a major investment and we will do everything we can to make sure your bulls are ready for the breeding season.

BULL DEVELOPMENT

All the bulls have been fed a high roughage ration that has the proper balance of trace minerals to enhance the bull's fertility. They are not fed for maximum gain but for future usefulness. In January at sale time, the bulls are just starting to hit their stride. By late spring they are big and strong and ready for the work that you have for them. All bulls will be semen tested. Last year all 12 yearling bulls we sent to get semen collected froze high quality semen.

DELIVERY

We will pay one half the delivery cost to central points anywhere in the continental US on animals that sell for \$5,000 or more. For animals under \$5,000, delivery will be at cost. For Canadian buyers, we will deliver up to the nearest point of entry. Please contact Dale with any questions.

Bob Woolsey, <i>Woolsey Trucking</i>	406-670-1877
--------------------------------------	--------------

SALE SCHEDULE

MONDAY AFTERNOON & TUESDAY MORNING

Viewing of sale cattle.
Refreshments will be served
on Monday afternoon.

TUESDAY NOON

Lunch at the ranch

TUESDAY 1 P.M.

World Class Bull Sale



LOT INDEX

PAGE 8

62 Spring-Born Polled Bulls

PAGE 37

30 Spring-Born Horned Bulls

PAGE 54

10 Fall Bulls

PAGE 58

11 Two-Year-Old Bulls

PAGE 64

Reference Semen Sires

TRAVEL INFORMATION

RANCH ADDRESS



1862 Yadon Rd.
Manhattan, MT 59741

DIRECTIONS



FROM MANHATTAN

Go north through town on Hwy 346.

At the north end of Manhattan, you'll see a school on the left and on the right, a yellow light for people to cross the road. This is where you turn left onto Yadon Road.

Drive down Yadon Road for one mile - we're on the right!

ACCOMODATIONS



HOLIDAY INN EXPRESS

406-388-7100
309 W Madison Ave.
Belgrade, MT 59714

EXTENDED STAY AMERICA

406-813-6115
101 Abby Street
Belgrade, MT 59714

EVEN HOTEL

888-978-3705
406 Belgrade BLVD
Belgrade, MT 59714

FORT THREE FORKS

406-285-3233
10776 US-287
Three Forks, MT 59752

AIR TRAVEL



BOZEMAN YELLOWSTONE INTERNATIONAL (BZN)

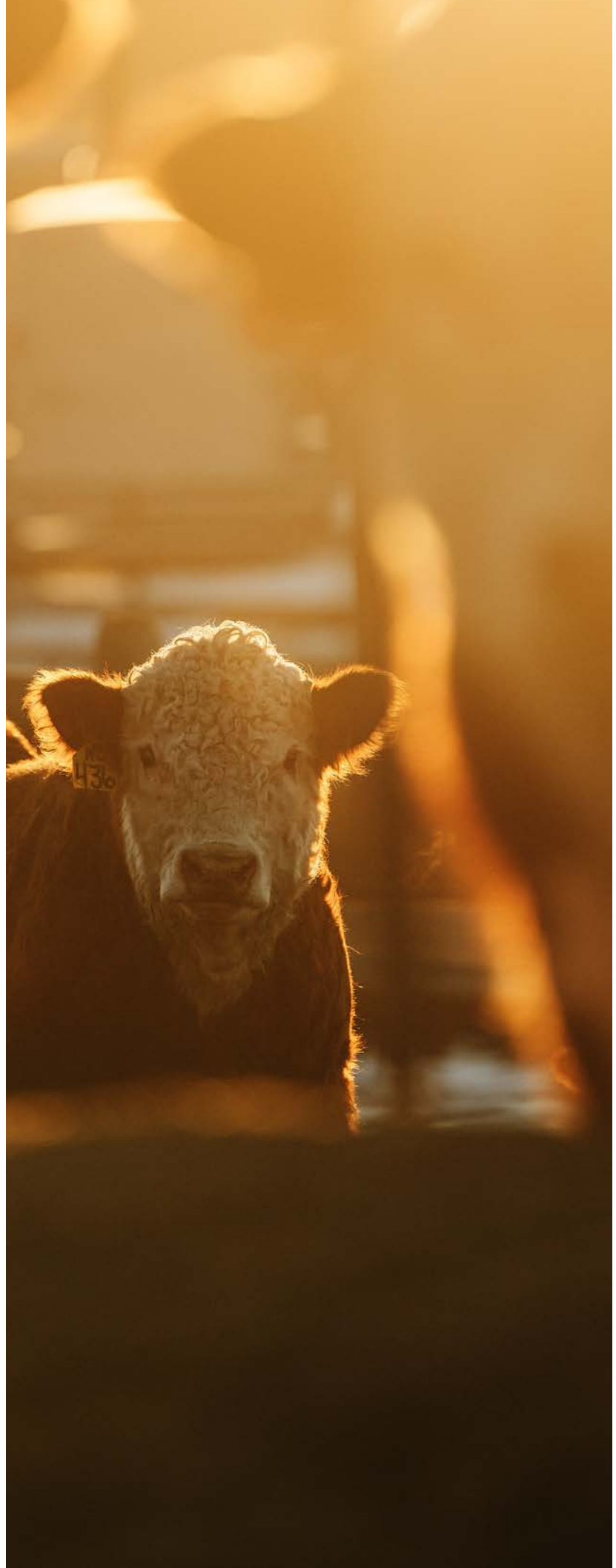
15 minute drive to the ranch.

United - Southwest - Delta - Northwest - American - Alaska

BILLINGS LOGAN INTERNATIONAL (BIL)

2.5 hour drive to the ranch.

United - Delta - American - Alaska - Allegiant - Cape Air



HOW TO ABSENTEE BID

Although we'd love for you to join us on sale day, we know it's a busy time of year and we all have to make the best choices for our health. If you can't make it to Manhattan, we have several great options for bidding in live time!

SUPERIOR PRODUCTIONS



We have made preparations with Superior Productions for those unable to attend in person on sale day. All lots will be available for viewing online prior to sale day at BID.SUPERIORLIVESTOCK.com.

ONLINE BIDDING BID.SUPERIORLIVESTOCK.COM

If you have not registered before, you will need to create an account if you wish to bid (there is no registration required just to watch the auction). Once you have created an account, request a buyer number and you will then be able to bid online with the largest and most trusted cattle marketing entity in North America. Superior's new platform allows you to see both the live stream of the auction AND the lot videos on one screen at the same time!

TURN IN BIDS OVER THE PHONE

This is Superior's suggested bidding method for anybody who does not have consistent, high-speed internet. You still must register an account at Bid.SuperiorLivestock.com and request a buyer number — upon doing so you will see the bid line phone number. Just watch the auction online and call in at least 2 lots ahead of the lot you are looking to bid on.

Churchill will contact buyers after the sale for payment/delivery details.

IF YOU NEED ANY ASSISTANCE CALL SUPERIOR AT (800) 422-2117



Livestock Auction

ALL NEW PUREBRED PLATFORM

Bid.SuperiorLivestock.com

LIVE AUCTIONS



Online Bidding Platform www.LIVEAUCTIONS.TV

To bid, you **MUST** register for a buyer number at least 24 hours prior to the auction. To watch on an iPhone/iPad, download the app from the app store.

- Go to LIVEAUCTIONS.TV
- Find our sale — sales are listed in date order
- Click “watch this event” — it will take you to the login page
- Log in — if you're a new user click “create new user.”
- Once logged in, you are able to view the sale.

TO BID YOU MUST REGISTER

We recommend registering for a buyer number at least 24 hours in advance of an auction. Sale day requests may still be accommodated.

- Get a buyer number by clicking “register for a buyer number” in the top right-hand corner.
- Fill out the information form & click “register now”. You will then be “pending approval”.
- Once approved, you'll receive an email. Your bidding number will also appear in the top-right of the sale page.

BUYERS — post sale, contact Dale or Nancy after the sale for payment/delivery details.

PROXY BIDDING — for those not able to watch in real-time, bids can be placed using the blue video tabs on the right of the log in screen.

SUPPORT — for support during the sale broadcast, chat live with one of our representatives. Otherwise, our support team is available at (800) 431-4452

SALE DAY PHONES



Dale Venhuizen	406-580-6421
Nancy Venhuizen	406-580-3715
Colby Atchison	406-320-0211
Megan Leep	406-600-4173
Shiloh Klein	701-891-9469

POWER OF THE BALDY MATERNAL INDEX (BMI)

Perhaps no trait or index ranks the potential profit for a cowherd like the Baldy Maternal Index. The index reflects traits like fertility, feed efficiency, weaning weight, mature cow size, and udder quality. This is an index that the Hereford Assn has reams of real world data on so it is very telling and accurate.

This won't come as much of a surprise to many of you that the number one sire in the entire Hereford breed is Churchill Sensation 028X. Sensation and his progeny do so many things right when it comes to making money with the cowherd. Even though Sensation is now gone, the thought process that created him is alive and well at Churchill Cattle!

The average bull in this sale ranks in the top 7% of the BMI or Baldy Maternal Index. That is very significant for you if you own a cowherd and want to be highly profitable. Even though she is not related to Sensation, our lead donor, 7098 who has several top sons in this sale, is right at the very top of the breed for BMI as well.

IMPORTANCE OF CALVING EASE

If a bull has this icon we would be willing to use him on our first calf heifers and would expect a relatively easy calving experience. In order for a bull to receive this icon, he would have had to have a fairly low actual birth weight, been born unassisted and have a fairly high calving ease direct EPD.

SALE BULLS WE CONSIDER CALVING EASE

06	10	26	27	28	29	30
33	35	38	39	40	41	42
43	54	77	80	81	85	87

MARKETING ASSISTANCE

We are very happy to offer our customers a helping hand when it comes to marketing your feeder cattle. The Churchill name has a nationwide reputation with buyers and feeders for efficient, fast growing cattle who offer a lot of carcass merit.

One big set of Churchill genetics buyers are feeders who help fill the Greater Omaha Hereford fed cattle program. This is a major program looking for Churchill genetics all through the year.

If you send us the details of when and how you sell your feeder cattle, at least a week before you offer them, we'll relay this information to the Greater Omaha feeders. Please send us your information by text or email.

If you have top quality replacement females for sale, let us know. Some of the time we have people that are looking for Churchill sired replacement females.

Don't be hesitant to reach out – if we can help, we will!

PLEASE TAKE NOTE

SALE ORDER

The sale order will be different from the catalog order. The sale order will be posted on our website two days before the sale or we can email/text it to you.

PARTIAL INTEREST

For the few bulls we are keeping a partial ownership interest in, we welcome your call if you have any questions about the terms of sale of those particular bulls.

FOOTNOTES & PHOTOS

We have only provided footnotes for bulls with pictures. But please know we are very proud of the high quality bulls who do not have footnotes/photos with them. In fact, many people have commented on the *consistent quality* of this year's offering, bulls from top to bottom!



Polled **SPRING BULLS**



UNIQUE, BOLD AND PROFIT DRIVEN!

This is easily the best set of polled bulls we've offered! Many are homozygous, and all of them will add pounds. But more importantly, add profit for you and the person who feeds your calves. They rank at the very top of the breed for the important dollar indexes.

Two tremendous sire groups are new for 2025: the Shermans & New Standards. Their ability to positively impact your program and your bottom line is very real. After being our high selling bull two years ago, Sherman first sire group is very dynamic!

They'll be ready to work this spring!

Stampede

DOMINATING *IN EVERY SENSE OF THE WORD.*

LOT 01

Very seldom has a bull shown this much power + this much marbling. This combined with his excellent fertility and udder quality will lead this breed forward. You really have to see Stampede in person to fully appreciate his bone, body depth, shape from behind and width of top.

His sire is our record-selling bull, Sherman, who has a fabulous sire group in this sale! His dam is our record-selling female, 219. She's as ideal of a young cow as you could ask for, with an impeccable udder.

Stampede has all the ingredients to make a very positive impact on Hereford cattle & the beef industry! Want to make a commitment to take a big step forward with your program? Contact us before the sale.

— *Terms Announced Sale Day* —





01 CHURCHILL STAMPEDE 486M ET

REG # 44561664 | HOMO | 01/20/24

Sire KCF BENNETT RESOLVE G595
 CHURCHILL W4 SHERMAN 2157K ET (P44378036)
 CHURCHILL LADY 079H ET

CED 1.0 | BW 1.3 | WW 72 | YW 111 | MM 32
 TEAT 1.4 | REA .91 | MARB .63 | BMI 498 | \$CHB 176
 BW 84 WW 883

CHURCHILL SHERMAN 459M ET 02

REG # 44589281 | HOMO | 01/12/24

Dam CHURCHILL DESPERADO Q29H
 CHURCHILL LADY 219K ET (P44378076)
 BR VALIDATED B413 6035 7098

CED 1.0 | BW 1.6 | WW 67 | YW 110 | MM 30
 TEAT 1.4 | REA .89 | MARB .69 | BMI 521 | \$CHB 195
 BW 75 WW 662

LOT 02

Despite being raised on a two-year-old, he's exceptional! He is long bodied with a great look & lots of shape. His EPDs are very similar to his full brother, Stampede. Plus he's out of a fantastic record-selling cow!



CHURCHILL W4 SHERMAN 2157K ET - Sire of Lots 1-25



CHURCHILL LADY 219K ET - Dam of Lots 01 & 02



CHURCHILL W4 SHERMAN 2157K ET - Sire of Lots 1-25



BR VALIDATED B413 6035 7098 - Dam of Lots 02-06

LOTS 3-6 **7098** x
SHERMAN *Sons*

THESE FOUR BROTHERS ARE SOMETHING TO BEHOLD!



LOT 03 is a red-eyed, dark red Sherman x 7098 son with a 758 lb weaning weight! This bull is really long bodied with a lot of thickness and power. His numbers are exceptional and he is homozygous polled. *These four full brothers are something to behold!*



CHURCHILL LADY 3121L ET - Maternal Sister to Lots 3-6

03 CHURCHILL SHERMAN 448M ET

REG # 44561643 | HOMO | 01/09/24

Sire KCF BENNETT RESOLVE G595
CHURCHILL W4 SHERMAN 2157K ET (P44378036)
CHURCHILL LADY 079H ET

CED 1.7 | BW 1.2 | WW 61 | YW 99 | MM 25
TEAT 1.4 | REA 1.02 | MARB .43 | BMI 528 | \$CHB 159
BW 79 WW 758

CHURCHILL SHERMAN 472M ET 04

REG # 44561658 | HOMO | 01/16/24

Dam EFBEEF BR VALIDATED B413
BR VALIDATED B413 6035 7098 (P43857421)
BR BENNETT 4R V428 2101 6035

CED 3.7 | BW 1.3 | WW 64 | YW 100 | MM 29
TEAT 1.5 | REA 1.04 | MARB .67 | BMI 541 | \$CHB 188
BW 77 WW 765

LOT 04 is a Sherman x 7098 homozygous bull with a great look and incredible numbers! This guy is thick made and powerful. His EPDs are some of the best in the breed with WW, YW, Scrotal, Milk, Udder, Teat, & Carcass Weight all in the top 10%, and Ribeye + Marb in the top 1%. This gives him a CHB of 189!



CHURCHILL LADY 2322K ET - Maternal Sister to Lots 3-6



05 CHURCHILL SHERMAN 434M ET

REG # 44567111 | HOMO | 01/07/24

KCF BENNETT RESOLVE G595

CHURCHILL W4 SHERMAN 2157K ET (P44378036)

CHURCHILL LADY 079H ET

EFBEEF BR VALIDATED B413

BR VALIDATED B413 6035 7098 (P43857421)

BR BENNETT 4R V428 2101 6035

BW 81

WW 658

CED 0.7 | BW 2.8 | WW 68 | YW 109 | MM 34

TEAT 1.5 | REA 1.02 | MARB .68 | BMI 493 | \$CHB 196

SOME OF THE *best* EPDS IN THE BREED!

A Sherman x 7098 homozygous bull with a great look and incredible numbers! This guy is thick made and powerful.

His EPDs are some of the best in the breed with WW, YW, Scrotal, Milk, Udder, Teat, Carcass Weight all in the top 10% and Ribeye and Marb in the top 1%.



CHURCHILL
JACK FROST 458M ET **06**

REG # 44567107 | HOMO | 01/11/24

KCF BENNETT RESOLVE G595
 CHURCHILL W4 SHERMAN 2157K ET (P44378036) **CE**
 CHURCHILL LADY 079H ET

EFBEEF BR VALIDATED B413 BW 75
 BR VALIDATED B413 6035 7098 (P43857421) WW 753
 BR BENNETT 4R Y428 2101 6035

CED 7.8 | BW -0.6 | WW 64 | YW 97 | MM 32
 TEAT 1.5 | REA 1.00 | MARB .71 | BMI 554 | \$CHB 191

Jack Frost
A SUPERSTAR IN THE MAKING!

He only has one flaw — his short ears due to extremely cold weather at birth, hence his name *Jack Frost*. Powerful, well balanced, attractive, easy fleshing, and great structured. His dam is the super cow, 7098. *Jack Frost* reminds us so much of his maternal brother, New Standard, but with even more eye appeal. His numbers indicate calving ease with incredible maternal values including udder quality. His carcass is as good as it gets with top 1% RE & Marb. Bulls this good are very rare!

— Terms available sale day —





HE'LL PUT YOU IN THE DRIVER'S SEAT!

A big time homozygous herd bull that we are really proud of! This guy is soft middled yet clean made with dark color and red eyes. He is a Sherman out of the gorgeous 0403 donor! His numbers are what you dream of — fast growth, very strong fertility, with ribeye, Marb and both dollar indexes in the top 1% of all Herefords!



07 CHURCHILL SHERMAN 446M ET

REG # 44561641 | HOMO | 01/09/24

KCF BENNETT RESOLVE G595
 CHURCHILL W4 SHERMAN 2157K ET (P44378036)
 CHURCHILL LADY 079H ET

EFBEEF BR VALIDATED B413
 CHURCHILL LADY 0403H ET (P44245920) **BW 84**
 SR CCC LADYSPORT 2205 Z ET **WW 742**

CEI -.16 | BW 3.4 | WW 69 | YW 110 | MM 28
 TEAT 1.2 | REA 1.08 | MARB .69 | BMI 551 | \$CHB 192



CHURCHILL LADY 0403H ET - Dam of Lot 07



LOT 08

CHURCHILL SHERMAN 4190M 08

REG # 44561611 | HOMO | 03/02/24

KCF BENNETT RESOLVE G595
 CHURCHILL W4 SHERMAN 2157K ET (P44378036)
 CHURCHILL LADY 079H ET

NJW LONG HAUL 36E ET
 CHURCHILL LADY 0236H (44164053) **BW 76**
 CHURCHILL LADY 7267E **WW 790**

CED 0.1 | BW 1.5 | WW 68 | YW 103 | MM 33
 TEAT 1.4 | REA .86 | MARB .17 | BMI 363 | \$CHB 134

CHURCHILL SHERMAN 4177M 09

REG # 44561600 | HOMO | 02/23/24

KCF BENNETT RESOLVE G595
 CHURCHILL W4 SHERMAN 2157K ET (P44378036)
 CHURCHILL LADY 079H ET

NJW LONG HAUL 36E ET
 CHURCHILL LADY 0166H (P44149772) **BW 76**
 CHURCHILL LADY 7255E **WW 677**

CED 9.8 | BW -0.9 | WW 58 | YW 88 | MM 31
 TEAT 1.4 | REA .95 | MARB .24 | BMI 487 | \$CHB 150

LOT 08 A homozygous Sherman son who will really catch your eye! He has looked very good right from the start and weaned heavy off his terrific dam. He moves great with a long stride and these Sherman bulls have ideal feet. His maternal and carcass numbers are very impressive. *THIS IS A BIG TIME PROSPECT!*



CHURCHILL LADY 079H ET - Paternal Granddam of Lots 1-25



NJW LONG HAUL 36E - Maternal Grandsire of Lots 08 & 09



CHURCHILL LADY 023H ET - Dam of Lots 10 & 11



CHURCHILL EQUITY 3316L - Maternal Sib to Lots 10 & 11

LOT 10 A very dark red Sherman bull out of our high selling cow this fall, 023H, who sold to GKB! His maternal brother Equity created quite a stir this past spring. He is long bodied and thick. He is a curve bender with top 1% scrotal and top 3% Fertility and very strong udder scores.

10 CHURCHILL SHERMAN 3420L ET

REG # 44592478 | HOMO | 12/10/23

KCF BENNETT RESOLVE G595
CHURCHILL W4 SHERMAN 2157K ET (P44378036)
CHURCHILL LADY 079H ET



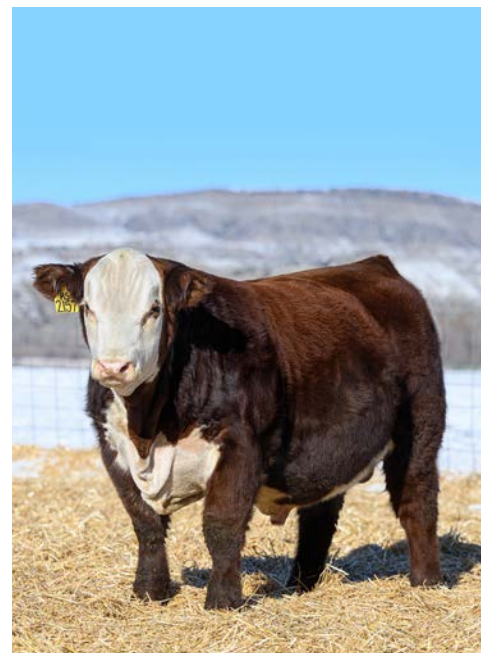
CE
CED -0.9 | BW 4.3 | WW 72 | YW 121 | MM 29
TEAT 1.3 | REA .55 | MARB .19 | BMI 385 | \$CHB 104
BW 81 WW 702

CHURCHILL SHERMAN 4127M ET 11

REG # 44561570 | HOMO | 02/05/24

NJW 76S 27A LONG RANGE 203D ET
CHURCHILL LADY 023H ET (P44149828)
JDH AH MERCEDES 11E ET

CED 5.1 | BW 1.6 | WW 66 | YW 107 | MM 28
TEAT 1.4 | REA .74 | MARB .19 | BMI 473 | \$CHB 147
BW 79 WW 642



CHURCHILL W4 SHERMAN 2157K ET - Sire of Lots 1-25

CHURCHILL SHERMAN 440M 12

REG # 44561638 | POLLED | 01/08/24

KCF BENNETT RESOLVE G595
CHURCHILL W4 SHERMAN 2157K ET (P44378036)
CHURCHILL LADY 079H ET

NJW 73S W18 HOMETOWN 10Y ET
CHURCHILL LADY 676D (43703057) BW 89
CHURCHILL LADY 180Y WW 748

CED 1.5 | BW 5.4 | WW 79 | YW 131 | MM 35
TEAT 1.1 | REA 1.04 | MARB .32 | BMI 434 | \$CHB 185

HE WILL GET YOUR ATTENTION!

He is a bigger power bull who is very correct. His dam has a tremendous record in our herd! He ranks in the top 1% for WW, YW, Scrotal, Carcass weight, Ribeye, and CHB!



13 CHURCHILL SHERMAN 4179M

REG # 44561602 | HOMO | 02/24/24

KCF BENNETT RESOLVE G595
CHURCHILL W4 SHERMAN 2157K ET (P44378036)
CHURCHILL LADY 079H ET

CHURCHILL JR FRONTLINE 6200D
CHURCHILL LADY 964G (P44044255) BW 84
CHURCHILL LADY 751E WW 752

CED 4.3 | BW 2.7 | WW 68 | YW 107 | MM 33
TEAT 1.5 | REA .99 | MARB .14 | BMI 516 | \$CHB 136

14 CHURCHILL SHERMAN 4121M ET

REG # 44616124 | SCURRED | 02/03/24

KCF BENNETT RESOLVE G595
CHURCHILL W4 SHERMAN 2157K ET (P44378036)
CHURCHILL LADY 079H ET

EXR BANKROLL 8130 ET
CHURCHILL LADY 002H ET (44149706) BW 76
CHURCHILL LADY 645D ET WW 681

CED 2.9 | BW 2.0 | WW 64 | YW 109 | MM 31
TEAT 1.4 | REA .95 | MARB .19 | BMI 511 | \$CHB 150

15 CHURCHILL SHERMAN 3421L ET

REG # 44592604 | HOMO | 12/08/23

KCF BENNETT RESOLVE G595
CHURCHILL W4 SHERMAN 2157K ET (P44378036)
CHURCHILL LADY 079H ET

BIRDWELL VANGUARD 5022 9337
CHURCHILL LADY 213K (P44378020) BW 81
CHURCHILL LADY 964G WW 725

CED 3.2 | BW 1.3 | WW 66 | YW 104 | MM 34
TEAT 1.5 | REA 1.01 | MARB .32 | BMI 515 | \$CHB 147

LOT 13 A terrific Sherman son out of a great producing cow! This guy has the look, has the numbers, and has the cow family. Top 5% Scrotal, Fertility, Udder, Teat, Carcass Weight, Ribeye, and BMI! His mother is one of our most efficient cows with an ideal udder.



CHURCHILL LADY 964 - Dam of Lot 13 - Pictured alongside her calf in August of 2021



THIS GUY IS THE REAL DEAL!

A wide body power bull out of Sherman! Look at his depth of rib and shape from behind — it is incredible! He is a big weaning weight bull with very strong numbers — top 2% WW and YW with very strong fertility and carcass!

16 CHURCHILL SHERMAN 3423L ET

REG # 44592484 | POLLED | 12/08/23

KCF BENNETT RESOLVE G595
 CHURCHILL W4 SHERMAN 2157K ET (P44378036)
 CHURCHILL LADY 079H ET

CHURCHILL NIGHTCAP 7256E
 CHURCHILL LADY 9411G ET (P44136372) BW 84
 SR CCC LADYSPORT 2205 Z ET WW 770

CED 0.8 | BW 3.6 | WW 74 | YW 125 | MM 30
 TEAT 1.2 | REA .88 | MARB .25 | BMI 446 | \$CHB 152



CHURCHILL LADY 9411G ET - Dam of Lot 16



CHURCHILL JR SHERMAN 4252M ET 17

REG # 44616163 | POLLED | 02/08/24

KCF BENNETT RESOLVE G595
 CHURCHILL W4 SHERMAN 2157K ET (P44378036)
 CHURCHILL LADY 079H ET

EXR BANKROLL 8130 ET
 CHURCHILL LADY 002H ET (44149706) **BW 84**
 CHURCHILL LADY 645D ET **WW 781**

CEW 2.9 | BW 2.0 | WW 64 | YW 109 | MM 31
 TEAT 1.4 | REA .95 | MARB .19 | BMI 511 | SCHB 150



CHURCHILL LADY 002H ET - Dam of Lot 17

WHAT HE OFFERS IS INCREDIBLE!

He is extremely deep sided with a square hip and massive body dimension. He is attractive, upheaded, and full of muscle. On top of that he is really athletic. His dam is very good with several outstanding sons in this sale. His numbers are terrific with top 2% BMI and CHB!



18 CHURCHILL SHERMAN 3422L ET

REG # 44592612 | HOMO | 12/08/23

KCF BENNETT RESOLVE G595
CHURCHILL W4 SHERMAN 2157K ET (P44378036)
CHURCHILL LADY 079H ET

BIRDWELL VANGUARD 5022 9337
CHURCHILL LADY 213K (P44378020) BW 80
CHURCHILL LADY 964G WW 660

CED 3.2 | BW 1.3 | WW 66 | YW 104 | MM 34
TEAT 1.5 | REA 1.01 | MARB .32 | BMI 515 | \$CHB 147

19 CHURCHILL SHERMAN 409M

REG # UNREGISTERED | POLLED | 1/03/24

KCF BENNETT RESOLVE G595
CHURCHILL W4 SHERMAN 2157K ET (P44378036)
CHURCHILL LADY 079H ET

CHURCHILL LADY 213K (P44378020) BW 80
CHURCHILL LADY 964G WW 720

CED - | BW - | WW - | YW - | MM -
TEAT - | REA - | MARB - | BMI - | \$CHB -

20 CHURCHILL SHERMAN 445M

REG # 44561639 | SCURRED | 01/09/24

KCF BENNETT RESOLVE G595
CHURCHILL W4 SHERMAN 2157K ET (P44378036)
CHURCHILL LADY 079H ET

CHURCHILL RED BULL 200Z
CHURCHILL LADY 486B (43499009) BW 82
CHURCHILL LADY 227 WW 707

CED -2.1 | BW 3.7 | WW 65 | YW 108 | MM 26
TEAT 1.3 | REA .81 | MARB .09 | BMI 420 | \$CHB 129

21 CHURCHILL SHERMAN 485M

REG # 44561663 | HOMO | 01/20/24

KCF BENNETT RESOLVE G595
CHURCHILL W4 SHERMAN 2157K ET (P44378036)
CHURCHILL LADY 079H ET

DM ALL AROUND 904G ET
CHURCHILL LADY 151J (P44267955) BW 77
CHURCHILL LADY 8260F WW 705

CED -2.1 | BW 2.8 | WW 72 | YW 114 | MM 51
TEAT 1.5 | REA 1.08 | MARB .23 | BMI 506 | \$CHB 173

22 CHURCHILL SHERMAN 493M

REG # 44561668 | HOMO | 01/23/24

KCF BENNETT RESOLVE G595
CHURCHILL W4 SHERMAN 2157K ET (P44378036)
CHURCHILL LADY 079H ET

DM ALL AROUND 904G ET
CHURCHILL LADY 175J (P44267971) BW 81
CHURCHILL LADY 7432E WW 675

CED -1.1 | BW 3.1 | WW 67 | YW 105 | MM 32
TEAT 1.5 | REA .92 | MARB .13 | BMI 427 | \$CHB 152

23 CHURCHILL SHERMAN 4113M

REG # 44561561 | POLLED | 01/29/24

KCF BENNETT RESOLVE G595
CHURCHILL W4 SHERMAN 2157K ET (P44378036)
CHURCHILL LADY 079H ET

CHURCHILL RED BARON 8300F ET
CHURCHILL LADY 141J (P44267947) BW 85
CHURCHILL LADY 8400F WW 650

CED -0.7 | BW 2.7 | WW 68 | YW 104 | MM 28
TEAT 1.6 | REA .86 | MARB .14 | BMI 391 | \$CHB 132

24 CHURCHILL SHERMAN 4150M

REG # 44561584 | HOMO | 02/11/24

KCF BENNETT RESOLVE G595
CHURCHILL W4 SHERMAN 2157K ET (P44378036)
CHURCHILL LADY 079H ET

CHURCHILL BROADWAY 858F
CHURCHILL LADY 040H (44149854) BW 73
CHURCHILL LADY 8260F WW 603

CED 1.5 | BW 0.2 | WW 59 | YW 98 | MM 33
TEAT 1.3 | REA .85 | MARB .54 | BMI 586 | \$CHB 191

25 CHURCHILL SHERMAN 4163M

REG # 44561591 | POLLED | 02/16/24

KCF BENNETT RESOLVE G595
CHURCHILL W4 SHERMAN 2157K ET (P44378036)
CHURCHILL LADY 079H ET

NJW 73S W18 HOMETOWN 10Y ET
CHURCHILL LADY 8177F (44267793) BW 81
CHURCHILL LADY 334A WW 637

CED 6.1 | BW 1.8 | WW 58 | YW 87 | MM 25
TEAT 1.5 | REA .89 | MARB .34 | BMI 547 | \$CHB 150

26 CHURCHILL MERIT 487M

REG # 44567033 | POLLED | 01/20/24

JW X651 TESTED 1857 ET
JW 1857 MERIT 21134 (P44212986)
JW 33Z VICTORIA 19027

BW 71
WW 705

NJW LONG HAUL 36E ET
CHURCHILL LADY 088H (44149893)
CHURCHILL LADY 602D

CE

CED 11.3 | BW -0.4 | WW 71 | YW 107 | MM 40
TEAT 1.5 | REA .52 | MARB .33 | BMI 531 | \$CHB 166

27 CHURCHILL MERIT 480M

REG # 44567036 | POLLED | 01/18/24

JW X651 TESTED 1857 ET
JW 1857 MERIT 21134 (P44212986)
JW 33Z VICTORIA 19027

BW 76
WW 711

NJW LONG HAUL 36E ET
CHURCHILL LADY 0178H (44149781)
GRAND JUBILEE D26

CE

CED 8.2 | BW 0.7 | WW 72 | YW 117 | MM 30
TEAT 1.4 | REA .72 | MARB .39 | BMI 488 | \$CHB 189

28 CHURCHILL MERIT 482M

REG # 44588782 | SCURRED | 01/19/24

JW X651 TESTED 1857 ET
JW 1857 MERIT 21134 (P44212986)
JW 33Z VICTORIA 19027

BW 76
WW 704

NJW LONG HAUL 36E ET
CHURCHILL LADY 0192H (44149792)
CHURCHILL LADY 7273E

CE

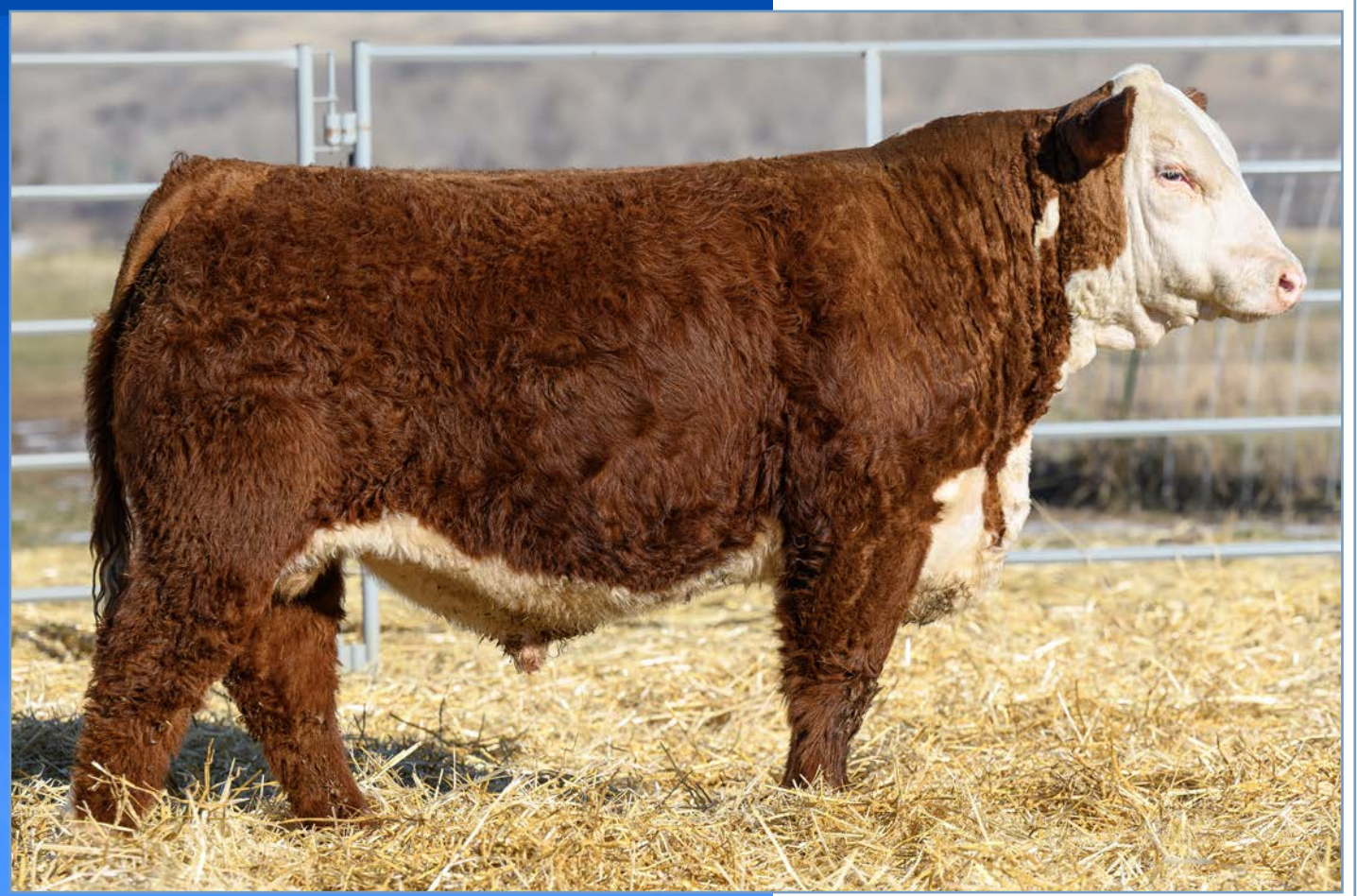
CED 7.8 | BW 0.8 | WW 71 | YW 114 | MM 36
TEAT 1.4 | REA .62 | MARB .56 | BMI 593 | \$CHB 177

LOT 26 (PICTURED BELOW) MATERNAL + CALVING EASE + VERY FAST GROWTH = HIGHLY PROFITABLE!
A big bodied Merit son with huge numbers and a terrific Long Haul dam! He's a calving ease bull with very fast growth! He's highly maternal and represents the very best of the breed in fertility, milk & udder quality! Top 1% BMI + top 4% CHB!

LOTS 26-33

SONS OF *Merit*





HEIFER SAFE + TOP 4% GROWTH!

This Merit son is out of one of the best cows on the ranch! She raised a \$60K bred heifer on her first calf & this bull is her second. Plus, she has a near perfect udder! This bull can be used on heifers yet is in the top 4% for growth with very strong maternal & udder quality. He's in the top 2% for BMI & CHB! These Merit sons are really something special for profit all the way through the beef system — for the rancher, feeder and packer!



29 CHURCHILL MERIT476M

REG # 44567038 | HOMO | 01/16/24

JW X651 TESTED 1857 ET
 JW 1857 MERIT 21134 (P44212986)
 JW 33Z VICTORIA 19027

BW 77
 WW 695

NJW LONG HAUL 36E ET
 CHURCHILL LADY 0368H ET (P44196785)
 JDH AH MERCEDES 11E ET



CE
 CED 5.7 | BW 1.3 | WW 69 | YW 107 | MM 31
 TEAT 1.4 | REA .51 | MARB .37 | BMI 486 | \$CHB 161



CHURCHILL LADY 307 - Lot29's \$60,000 Maternal Sister



CHURCHILL MERIT 490M **30**

REG # 44567032 | SCURRED | 01/22/24

JW X651 TESTED 1857 ET
JW 1857 MERIT 21134 (P44212986)
JW 33Z VICTORIA 19027

BW 76
WW 700

NJW LONG HAUL 36E ET
CHURCHILL LADY 0169H (44149775)
CHURCHILL LADY 747E

CE

CED 10.0 | BW -.01 | WW 68 | YW 108 | MM 32
TEAT 1.3 | REA .60 | MARB .44 | BMI 511 | \$CHB 175

Big Time
CALVING EASE PROSPECT!

This is a big time prospect and one of Morgan's very favorites! This guy is so right in his structure and in the way he moves. He is a calving ease bull with exceptional growth. He is dark red & red eyed. His EPDs are super good. His dam is an ideal cow. These Long Haul cows really hit a home run with Merit!

— Retaining 1/2 semen interest —





31 CHURCHILL MERIT 4134M

REG # 44561575 | HOMO | 02/06/24

JW X651 TESTED 1857 ET
 JW 1857 MERIT 21134 (P44212986) BW 79
 JW 33Z VICTORIA 19027 WW 685

CHURCHILL STUD 3134A
 CHURCHILL LADY 6205D (P43924180)
 CHURCHILL LADY 350A ET

CED 9.6 | BW -0.7 | WW 67 | YW 109 | MM 37
 TEAT 1.6 | REA .89 | MARB .47 | BMI 531 | \$CHB 182

OUTSTANDING HERD BULL PROSPECT!

This eye-appealing homozygous Merit son is out of a fantastic Churchill Stud cow with an ideal udder! He's a calving ease bull with excellent growth & top 1% udder quality! His fertility & carcass are terrific giving him top 1% for BMI & CHB!



CHURCHILL LADY 2106K ET - Dam of Lot 32

32 CHURCHILL MERIT 483M

REG # 44567034 | HOMO | 01/20/24

JW X651 TESTED 1857 ET BW 85
 JW 1857 MERIT 21134 (P44212986) WW 650
 JW 33Z VICTORIA 19027

TH MASTERPLAN 183F
 CHURCHILL LADY 2106K ET (P44377989)
 BR VALIDATED B413 6035 7098

CED 2.8 | BW 1.6 | WW 79 | YW 125 | MM 29
 TEAT 1.5 | REA .85 | MARB .57 | BMI 531 | \$CHB 200

DON'T OVERLOOK THIS GENETIC GIANT!

He is out of a two-year-old daughter of 7098 and he combines as elite set of numbers as you will find! He's in the top 1% for WW, YW, Scrotal, CW and CHB. There is lot to like right here!




CHURCHILL LADY 023H ET - Dam of Lot 33

33 CHURCHILL MERIT 3409L ET

REG # 44592450 | HOMO | 12/04/23

JW X651 TESTED 1857 ET BW 84
 JW 1857 MERIT 21134 (P44212986) WW 722
 JW 33Z VICTORIA 19027

NJW 76S 27A LONG RANGE 203D ET
 CHURCHILL LADY 023H ET (P44149828) 
 JDH AH MERCEDES 11E ET

CED 8.3 | BW 1.6 | WW 78 | YW 125 | MM 31
 TEAT 1.4 | REA .60 | MARB .41 | BMI 497 | \$CHB 185

CHURCHILL EQUITY'S FULL BROTHER!

This guy is a calving ease bull with exceptional growth and carcass. Top 2% BMI and top 3% CHB! A flush on his fabulous dam sold for \$29,000 in the GKB Cattle sale!

LOTS 34-37
SONS OF
Red Thunder



CHURCHILL
RED THUNDER 499M 34

REG # 44561673 | POLLED | 01/24/24

DM ALL AROUND 904G ET
 CHURCHILL RED THUNDER 133J ET (P44267942) BW 79
 BR VALIDATED B413 6035 7098 WW 694

CHURCHILL RED BULL 200Z
 CHURCHILL LADY 6268D (P43703003)
 CHURCHILL LADY 207Z ET

CED 9.2 | BW -.1 | WW 52 | YW 85 | MM 42
 TEAT 1.5 | REA .80 | MARB .41 | BMI 495 | \$CHB 160

WE THINK YOU WILL REALLY LIKE HIM!

He is thick made, deep sided, and long bodied. He carries a ton of muscle and he'll be a powerful three-year-old bull you'll be proud of! His numbers are excellent in all areas.



35 CHURCHILL
RED THUNDER 497M

REG # 44561671 | POLLED | 01/23/24

DM ALL AROUND 904G ET
 CHURCHILL RED THUNDER 133J ET (P44267942) BW 74
 BR VALIDATED B413 6035 7098 WW 677

NJW LONG HAUL 36E ET
 CHURCHILL LADY 939G (P44044234)
 CHURCHILL LADY 678D



CED 4.0 | BW 1.7 | WW 62 | YW 101 | MM 37
 TEAT 1.3 | REA .83 | MARB .35 | BMI 418 | \$CHB 153

36 CHURCHILL
RED THUNDER 4104M

REG # 44561553 | POLLED | 01/27/24

DM ALL AROUND 904G ET
 CHURCHILL RED THUNDER 133J ET (P44267942) BW 79
 BR VALIDATED B413 6035 7098 WW 655

CHURCHILL STUD 3134A
 CHURCHILL LADY 5342C (P43631815)
 CHURCHILL LADY 418

CED 0.3 | BW 3.0 | WW 61 | YW 94 | MM 34
 TEAT 1.3 | REA .99 | MARB .34 | BMI 538 | \$CHB 170

37 CHURCHILL
RED THUNDER 4158M

REG # 44561587 | HOMO | 02/15/24

DM ALL AROUND 904G ET
 CHURCHILL RED THUNDER 133J ET (P44267942) BW 89
 BR VALIDATED B413 6035 7098 WW 679

CHURCHILL RED BULL 200Z
 CHURCHILL LADY 500C ET (P43603038)
 HVH OKSANA 4L 33N

CED 3.5 | BW 3.4 | WW 69 | YW 108 | MM 35
 TEAT 1.4 | REA .85 | MARB .19 | BMI 492 | \$CHB 152

38 CHURCHILL NEW STANDARD 436M

REG # 44567110 | POLLED | 01/07/24

KCF BENNETT RESOLVE G595
BIRDWELL NEW STANDARD 2912 ET (P44358760) BW 74
BR VALIDATED B413 6035 7098 WW 647

C CJC BELLE HEIR ET
JLC MISS DOMINETTE ENDURE (44339636) **CE**
CL 1 DOMINETTE 9228G 1ET

CED 11.2 | BW -0.6 | WW 59 | YW 86 | MM 25
TEAT 1.6 | REA .86 | MARB .45 | BMI 502 | \$CHB 155

39 CHURCHILL NEW STANDARD 441M

REG # 44561901 | HOMO | 01/08/24

KCF BENNETT RESOLVE G595
BIRDWELL NEW STANDARD 2912 ET (P44358760) BW 77
BR VALIDATED B413 6035 7098 WW 618

DM ALL AROUND 904G ET
CHURCHILL LADY 241K ET (P44380909) **CE**
JDH AH MERCEDES 11E ET

CED 6.5 | BW 1.8 | WW 59 | YW 91 | MM 33
TEAT 1.7 | REA .96 | MARB .37 | BMI 564 | \$CHB 178

LOTS 38-44

NEW STANDARD *Sons*



LOT 40 A very high quality calving ease bull out of one of the most popular cow families in the breed! This stout, red-eyed guy is super balanced & homozygous. His EPDs are very balanced at a very high level with top 1% BMI & top 7% CHB.

His dam sold for \$65,000 in our female sale and a maternal sister sold for \$67,500. Another maternal sister may be the thickest bred heifer on our ranch.



CHURCHILL LADY 023H ET - Dam of Lot 40



CHURCHILL 40
APH STANDARD 4123M

REG # 44562534 | HOMO | 02/03/24

KCF BENNETT RESOLVE G595
BIRDWELL NEW STANDARD 2912 ET (P44358760)
BR VALIDATED B413 6035 7098



NJW 76S 27A LONG RANGE 203D ET
CHURCHILL LADY 023H ET (P44149828)
JDH AH MERCEDES 11E ET

BW 81
WW 669

CED 10.3 | BW 0.3 | WW 62 | YW 94 | MM 32
TEAT 1.4 | REA .80 | MARB .36 | BMI 573 | \$CHB 159

CHURCHILL 41
NEW STANDARD 4143M

REG # 44561917 | HOMO | 02/10/24

KCF BENNETT RESOLVE G595
BIRDWELL NEW STANDARD 2912 ET (P44358760)
BR VALIDATED B413 6035 7098



CHURCHILL BROADWAY 858F
CHURCHILL LADY 102J (P44267808)
CHURCHILL LADY 9172G

BW 74
WW 669

CED 4.8 | BW 0.4 | WW 63 | YW 101 | MM 30
TEAT 1.7 | REA .83 | MARB .54 | BMI 605 | \$CHB 178

LOT 41

This good looking homozygous bull is so special in all the right areas, it is unbelievable! He has lots of pigment and carries a lot of shape. His EPDs are top 1% for Fertility, Teat, Udder and top 2% for Marb and CHB. His BMI is 602 which is nearly unheard of!



BR VALIDATED B413 6035 7098 - Pat. Granddam of Lots 38-44





42 CHURCHILL NEW STANDARD 406M

REG # 44561900 | SCURRED | 01/03/24

KCF BENNETT RESOLVE G595
 BIRDWELL NEW STANDARD 2912 ET (P44358760) BW 77
 BR VALIDATED B413 6035 7098 WW 724

CHURCHILL MAJESTIC 903G ET
 CHURCHILL LADY 243K (P44378139)
 CHURCHILL LADY 092H



CE
 CED 7.6 | BW 1.4 | WW 69 | YW 101 | MM 35
 TEAT 1.6 | REA .98 | MARB .36 | BMI 487 | \$CHB 153

CALVING EASE + QUALITY + NUMBERS!

This bull has the look and maternal power to be a great herd bull for you!

He is calving ease, loaded with quality and backed by a dam who is as ideal of a two-year-old as you could want!

His numbers are super! Fast growth with top 1% udder quality, top 5% BMI & top 10% CHB.

Lot 42 pictured alongside his dam, CHURCHILL LADY 243 last July

**CHURCHILL
STANDARD 463M ET 43**

REG # 44562533 | HOMO | 01/12/24

KCF BENNETT RESOLVE G595
BIRDWELL NEW STANDARD 2912 ET (P44358760) BW 75
BR VALIDATED B413 6035 7098 WW 562

KCF BENNETT RESOLVE G595
CHURCHILL LADY 2283K ET (P44385185) **CE**
CHURCHILL LADY 023H ET

CED 10.3 | BW -0.4 | WW 62 | YW 98 | MM 27
TEAT 1.4 | REA 1.05 | MARB .57 | BMI 548 | \$CHB 192

**CHURCHILL
NEW STANDARD 4167M 44**

REG # 44561925 | POLLED | 02/17/24

KCF BENNETT RESOLVE G595
BIRDWELL NEW STANDARD 2912 ET (P44358760) BW 81
BR VALIDATED B413 6035 7098 WW 644

GOLDEN OAK OUTCROSS 18U
CHURCHILL SR LADY 3200A ET (P43377096)
NJW 78P 63N LADYSPORT 51W ET

CED 0.8 | BW 3.4 | WW 64 | YW 106 | MM 33
TEAT 1.6 | REA 1.23 | MARB .33 | BMI 611 | \$CHB 179

LOTS 45-47 DOMINO 267K *POLLED
Sans*



**CHURCHILL
DOMINO 429M ET 45**

REG # 44561630 | SCURRED | 01/06/24

CL 1 DOMINO 0186H
CL 1 DOMINO 267K 1ET (44347274) BW 77
CL 1 DOMINETTE 719E 1ET WW 678

EXR BANKROLL 8130 ET
CHURCHILL LADY 079H ET (P44149885)
CHURCHILL LADY 7189E ET

CED 1.8 | BW 2.0 | WW 67 | YW 108 | MM 30
TEAT 1.5 | REA .63 | MARB .34 | BMI 470 | \$CHB 158

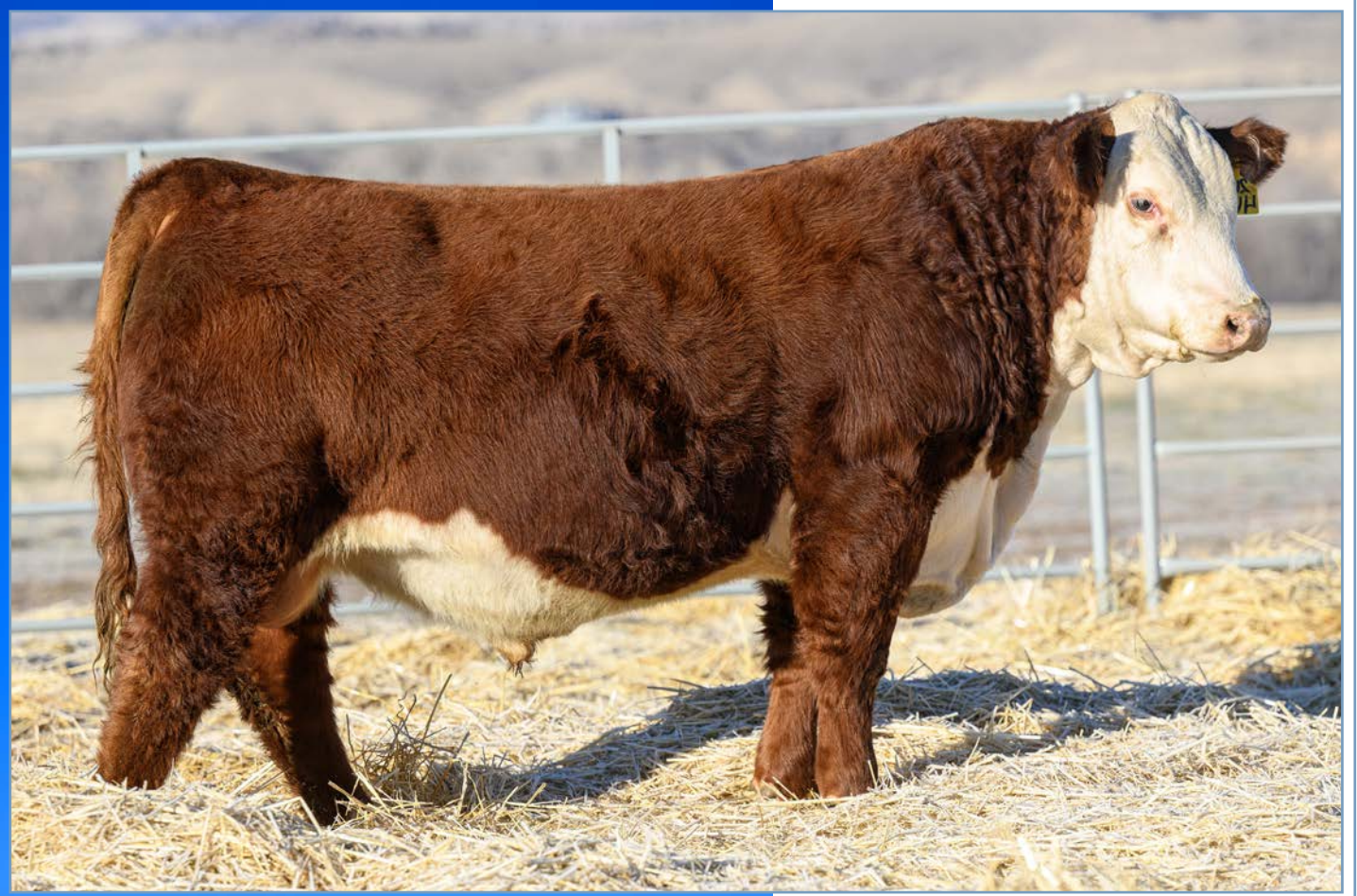
**CHURCHILL
DOMINO 4146M 46**

REG # 44561582 | POLLED | 02/11/24

CL 1 DOMINO 0186H
CL 1 DOMINO 267K 1ET (44347274) BW 83
CL 1 DOMINETTE 719E 1ET WW 697

CHURCHILL HIGH NOON 8339F ET
CHURCHILL LADY 132J (44267941)
CHURCHILL LADY 8206F

CED 2.9 | BW 2.8 | WW 66 | YW 107 | MM 33
TEAT 1.4 | REA .80 | MARB .17 | BMI 407 | \$CHB 149



Commander

SHERMAN'S MATERNAL BROTHER!

We named this bull Commander because he is a powerhouse with a 805 lbs weaning weight! He is a maternal brother to Sherman and is out of one of the best cows we know about!

He is a very complete power bull with tons of depth and shape from behind. He is upheaded, good footed, and attractive. If you want a great polled herd bull with a little different genetics, here he is!

— Terms Available Sale Day —



**47 CHURCHILL
COMMANDER 467M ET**

REG # 44561653 | POLLED | 01/13/24

CL 1 DOMINO 0186H
CL 1 DOMINO 267K 1ET (44347274)

BW 75
WW 805

CL 1 DOMINETTE 719E 1ET
EXR BANKROLL 8130 ET
CHURCHILL LADY 079H ET (P44149885)
CHURCHILL LADY 7189E ET

CED 1.0 | BW 3.1 | WW 70 | YW 125 | MM 25
TEAT 1.3 | REA .49 | MARB .21 | BMI 402 | \$CHB 153



CHURCHILL LADY 079H ET - Dam of Lot 47

LOTS 48-52 *Sons of* ARLO

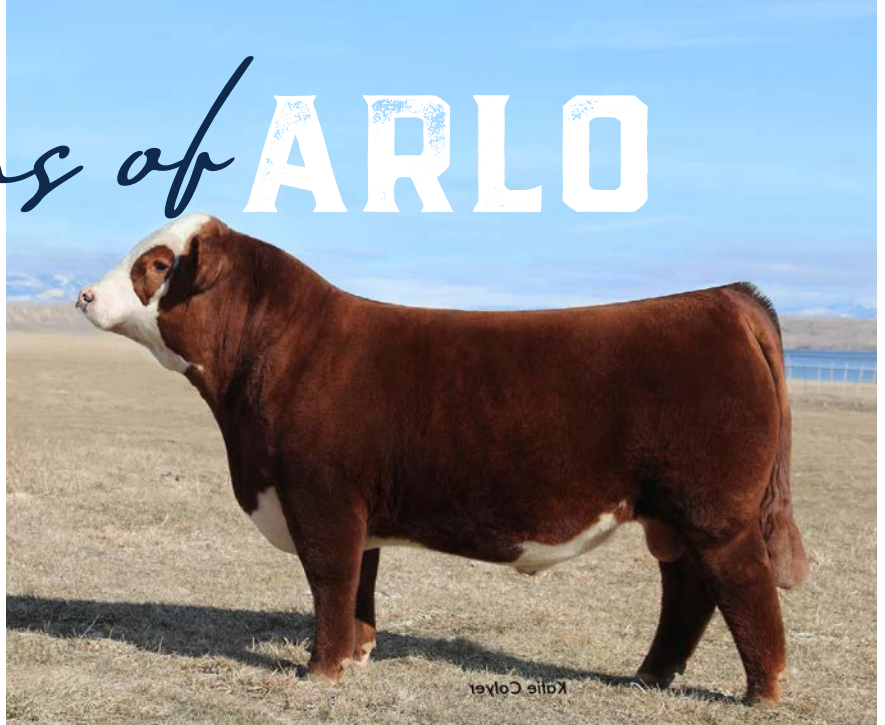
CHURCHILL ARLO 4132M ET 48

REG # 44618146 | SCURRED | 02/06/24

LOEWEN GENESIS G16 ET BW 84
 C ARLO 2135 ET (P44359827) WW 690
 C 88X NOTICE ME 1311 ET

CL 1 DOMINO 215Z
 CL 1 DOMINETTE 850F (43903431)
 CL 1 DOMINETTE 5123C 1ET

CED -0.3 | BW 4.2 | WW 70 | YW 109 | MM 33
 TEAT 1.3 | REA .76 | MARB .32 | BMI 442 | \$CHB 172



CHURCHILL ARLO 4151M 49

REG # 44567041 | SCURRED | 02/12/24

LOEWEN GENESIS G16 ET BW 86
 C ARLO 2135 ET (P44359827) WW 845
 C 88X NOTICE ME 1311 ET

CHURCHILL ADVANCE 756E
 CHURCHILL LADY 933G (P44053095)
 CHURCHILL LADY 704E

CED -2.9 | BW 4.4 | WW 76 | YW 116 | MM 35
 TEAT 1.6 | REA .77 | MARB .15 | BMI 480 | \$CHB 157



HE OFFERS HIGH GROWTH & CARCASS AND IS BACKED BY A GREAT COW!

This Arlo son is red eyed and really thick made! He is the natural calf out of the beautiful donor 0403H. He ranks very high in growth and carcass.

CHURCHILL ARLO 4173M 50

REG # 44561597 | HOMO | 02/19/24

LOEWEN GENESIS G16 ET BW 92
 C ARLO 2135 ET (P44359827) WW 704
 C 88X NOTICE ME 1311 ET

EFBEEF BR VALIDATED B413
 CHURCHILL LADY 0403H ET (P44245920)
 SR CCC LADYSPORT 2205 Z ET

CED -5.5 | BW 4.4 | WW 71 | YW 114 | MM 28
 TEAT 1.3 | REA .94 | MARB .41 | BMI 480 | \$CHB 163



CHURCHILL LADY 0403H ET - Dam of Lot 49

51 CHURCHILL X ARLO 481M



REG # 44567035 | SCURRED | 01/18/24

LOEWEN GENESIS G16 ET BW 84
C ARLO 2135 ET (P44359827) WW 773
C 88X NOTICE ME 1311 ET

EXR BANKROLL 8130 ET
CHURCHILL LADY 016H ET (P44149776)
CHURCHILL LADY 500C ET

CED -0.5 | BW 5.8 | WW 83 | YW 136 | MM 35
TEAT 1.2 | REA .70 | MARB .06 | BMI 450 | \$CHB 149



CHURCHILL LADY 016H ET - DAM OF LOT 51

RED-EYED WITH TOP 1 % GROWTH!

This is a red-eyed Arlo son who weaned heavy and shows lots of growth! He has a lot of quality and his mother has a very good udder. He ranks in the top 1% for WW, YW, and Scrotal with top 11% both BMI and CHB.

52 CHURCHILL ARLO 465M ET



REG # 44567039 | POLLED | 01/13/24

LOEWEN GENESIS G16 ET BW 81
C ARLO 2135 ET (P44359827) WW 737
C 88X NOTICE ME 1311 ET

CHURCHILL DESPERADO 029H
CHURCHILL LADY 219K ET (P44378076)
BR VALIDATED B413 6035 7098

CED -2.7 | BW 4.9 | WW 69 | YW 105 | MM 34
TEAT 1.3 | REA .70 | MARB .45 | BMI 460 | \$CHB 163



CHURCHILL LADY 0403H ET - Dam of Lot 52

SON OF OUR RECORD-SELLING 219 COW!

A powerful Arlo bull out of the record selling 219 cow! This guy is stout, heavy muscled and has terrific EPDs in all areas.

CHURCHILL 53 JR VANGUARD 4250M ET

REG # 44616160 | HOMO | 01/31/24

EFBEEF BR VALIDATED B413 BW 76
BIRDWELL VANGUARD 5022 9337 (P44021997) WW 760
BR SENSATION 028X 3335 5022

BOYD 31Z BLUEPRINT 6153
CHURCHILL LADY 916G ET (P44044195)
SR CCC LADYSPORT 2205 Z ET

CED 2.3 | BW 2.3 | WW 66 | YW 105 | MM 34
TEAT 1.3 | REA .86 | MARB .24 | BMI 428 | SCHB 132



CHURCHILL LADY 916G ET - Dam of Lot 53



THE ONLY SON OF CHURCHILL LADY 916G!

This is the only calf out of 916G, who was as good of a female as we have ever raised. We lost her on her back as a bred heifer but she was amazing! This Vanguard son offers a lot of good things, so make sure you look him up!

CHURCHILL 54 ROUTE 66 478M

REG # 44567098 | SCURRED | 01/18/24

KCF BENNETT DEVOUT B716 ET BW 82
NJW ROUTE 66 (P44280289) WW 798
NJW 11B 6589 RITA 32G ET

CL 1 DOMINO 0186H
CHURCHILL LADY 2153K (44378032)
CHURCHILL LADY 955G

CE

CED 7.3 | BW 1.0 | WW 64 | YW 102 | MM 36
TEAT 1.5 | REA .51 | MARB .34 | BMI 422 | SCHB 138



CHURCHILL LADY 2153K - Dam of Lot 54



LOOK AT THE WEANING WEIGHT ON THIS GUY!

He weaned off at 798 lbs!!! His two-year-old dam, sired by 0186, is fabulous! He is a calving ease bull with fast growth and really good udder quality numbers.



CHURCHILL LADY 7189E ET - Dam of Lot 55



CSC 76Y HENRY 014 - Sire of Lots 55 & 56



55 CHURCHILL HENRY 4210M

REG # 44616911 | HOMO | 03/16/24

CHURCHILL JR FRONTLINE 6200D BW 80
CSC 76Y HENRY 014 (P44150338) WW 710
LB 3T 22U MISS 76Y

R LEADER 6964
CHURCHILL LADY 7189E ET (P43812621)
CHURCHILL LADY 500C ET

CED 2.4 | BW 2.3 | WW 69 | YW 109 | MM 34
TEAT 1.4 | REA .47 | MARB .01 | BMI 439 | \$CHB 100

OUT OR SHERMAN'S GRANDDAM!

Top quality March born out of Sherman's granddam! This is a really good homozygous calf out of the powerful Henry bull. He is a maternal brother to the popular Expedition 619 bull!

56 CHURCHILL HENRY 4193M

REG # 44561613 | POLLED | 03/05/24

CHURCHILL JR FRONTLINE 6200D BW 74
CSC 76Y HENRY 014 (P44150338) WW 680
LB 3T 22U MISS 76Y

NJW 98S R117 RIBEYE 88X ET
RMB 88X SOUTHERN BELLE 607C ET (43566803)
GRANDVIEW CMR MISS VIC X221

CED 0.2 | BW 3.3 | WW 66 | YW 103 | MM 39
TEAT 1.4 | REA .64 | MARB .03 | BMI 438 | \$CHB 109

57 CHURCHILL ROUTE 66 4152M

REG # 44561585 | POLLED | 02/13/24

KCF BENNETT DEVOUT B716 ET BW 84
NJW ROUTE 66 (P44280289) WW 710
NJW 11B 6589 RITA 32G ET

BIRDWELL VANGUARD 5022 9337
CHURCHILL LADY 1303J ET (P44306008)
H FHF ZOEY 8418 ET

CED 9.4 | BW 1.8 | WW 70 | YW 110 | MM 34
TEAT 1.7 | REA .89 | MARB .33 | BMI 590 | \$CHB 142

NEED MATERNAL? LOOK HERE!

This is a really good young bull out of a fabulous, efficient & easy fleshing two-year-old heifer with an ideal udder. This bull has super maternal numbers with fertility, milk, & udder quality.

CHURCHILL JR THOMAS 4253M ET 58

REG # 44616165 | HOMO | 02/06/24

EFBEEF RESOLUTE CEO BW 88
H WMS THOMAS COUNTY 1443 ET (P44257454) WW 812
H MS EXCEL 7945 ET

CHURCHILL BROADWAY 858F
CHURCHILL LADY 1221J ET (P44267908)
BR VALIDATED B413 6035 7098

CED 2.4 | BW 2.8 | WW 73 | YW 121 | MM 33
TEAT 1.3 | REA .78 | MARB .61 | BMI 508 | \$CHB 186

MASSIVE, DEEP BODIED & POWERFUL!

Just look at this massive Thomas County son. His dam, 1221, is a great 7098 daughter with an ideal udder. This bull ranks in the top 3% for WW, YW, Scrotal, CW, Ribeye, Marb, BMI and CHB!



HICKEY RED STORM 401M 59

REG # 44617020 | POLLED | 01/04/24

CHURCHILL RED BARON 8300F ET BW 96
CHURCHILL RED CLOUD 0376H ET (P44273826) WW 847
BR VALIDATED B413 6035 7098

CHURCHILL NIGHTCAP 7256E
CHURCHILL LADY 963G (44044254)
CHURCHILL LADY 701E

CED 2.0 | BW 3.4 | WW 71 | YW 114 | MM 35
TEAT 1.4 | REA .67 | MARB .27 | BMI 437 | \$CHB 144

POWERFUL SON OF RED CLOUD!

This Red Cloud son is a power bull with lots of eye appeal and pigment! He is thick made, wide based & long bodied. He's out of an excellent cow and has very strong EPDs in all areas.



60 CHURCHILL ROUTE 66 4129M

REG # 44561572 | POLLED | 02/05/24

KCF BENNETT DEVOUT B716 ET BW 82
NJW ROUTE 66 (P44280289) WW 673
NJW 11B 6589 RITA 32G ET

HAROLDSON'S UNITED 33D 36G
PCL 36G NUANCE 41K (P44439826)
PCL 25Z NUANCE 26G

CED 7.0 | BW 1.8 | WW 60 | YW 89 | MM 27
TEAT 1.5 | REA .18 | MARB .26 | BMI 487 | \$CHB 112

61 CHURCHILL MASTERPLAN 3415L

REG # 44592461 | POLLED | 12/10/24

KCF BENNETT STRATEGY Z303 ET BW 78
TH MASTERPLAN 183F (P43920493) WW 640
TH 512X 145Y DOMINETTE 57B

CHURCHILL STUD 3134A
CHURCHILL LADY 6205D (P43924180)
CHURCHILL LADY 350A ET

CED 2.2 | BW 1.3 | WW 61 | YW 103 | MM 27
TEAT 1.6 | REA .70 | MARB .31 | BMI 454 | \$CHB 149

62 CHURCHILL SILVER 4202M

REG # 44616128 | SCURRED | 03/10/24

BR COPPER 124Y BW 80
CHURCHILL SILVER 0288H ET (P44199862) WW 720
CHURCHILL LADY 500C ET

CHURCHILL BROADWAY 858F
CHURCHILL LADY 051H (P44149862)
CHURCHILL LADY 8222F ET

CED -0.4 | BW 2.8 | WW 63 | YW 102 | MM 31
TEAT 1.5 | REA .51 | MARB .12 | BMI 504 | \$CHB 127

CHURCHILL GENETICS ACHIEVE **STRONG** FEEDLOT PERFORMANCE

We fed our home raised steers in the 2023 Hereford Feedout Program at HRC Feeders in Scott City, KS.

THE RESULTS WERE **IMPRESSIVE**

AVG. HARVEST AGE	15 MONTHS
INITIAL WEIGHT	728 LBS
GAIN/DAY FOR 175 DAYS	4.46 LBS
HARVEST WEIGHT	1511 LBS
CARCASS VALUE/HEAD	\$2859
% CHOICE	85%
COST OF GAIN	1.17/LBS
CONVERSION	4.96 TO 1

The cost of gain and feed conversions were the best in the program,
and far better than average for this 60,000 head feedlot!

CHURCHILL GENETICS WILL CONSISTENTLY GIVE YOU & YOUR CUSTOMERS OUTSTANDING RESULTS!





Horned
SPRING BULLS



A VERY SPECIAL OFFERING!

Talk about powerful genetics! Wait till you see these strong bulls and the data that backs them up! We spend a lot of time, effort, and money on our horned program and these bulls are the proof. They will do more with less. They will get the cows bred and sire big, stout calves.

The largest sire group is out of the \$120K Cooper sale topper 267K. These bulls are right for today and tomorrow! If you like classic horned bulls that do a great job, you will love these guys!

Redwood

*THE REDWOODS, ONCE SEEN, LEAVE A MARK THAT STAYS WITH YOU **ALWAYS.***

We love this powerful horned feature bull so we named him Redwood! He is out of the carcass leader 0159 whose daughters lit up our female sale this fall. The dam of Redwood was a great donor for us and W4 Ranch before moving to Buford Ranch. She is a power cow in every way and has an excellent udder.

His genetics are straight horned. He has all the pigment and dark red color people are asking for. Just look at the length of side and thick top and rib shape and powerful butt end that he possesses. His EPDs are very strong and balanced with 11 traits in the top 10% of the breed.

— *Terms Announced Sale Day* —





**CHURCHILL
REDWOOD 3408L ET 63**

REG # 44601813 | HORNED | 12/16/23

HH ADVANCE 7088E
HH ADVANCE 0159H (44128721) BW 84
 HH MISS ADVANCE 6317D WW 768
 SR BAKKEN 62Z
CHURCHILL LADY 5131C ET (43586786)
 CHURCHILL LADY 9123W ET

CEU 4.0 | BW 2.0 | WW 61 | YW 91 | MM 42
 TEAT 1.3 | REA .79 | MARB .34 | BMI 485 | \$CHB 155



Churchill Lady 346L - Paternal Sister to Redwood



CHURCHILL LADY 5131 - Dam of Redwood



HH ADVANCE 0159H - Sire of Redwood



LOTS 64-78

DOMINO 267K

HORNED *Sons*



64 CHURCHILL DOMINO 438M

REG # 44561636 | HORNED | 01/07/24

CL 1 DOMINO 0186H
 CL 1 DOMINO 267K 1ET (44347274) BW 81
 CL 1 DOMINETTE 719E 1ET WW 673
 HH ADVANCE 3022A ET
 CHURCHILL LADY 5168C (43586817)
 CHURCHILL LADY 2158Z ET

CED 3.9 | BW 1.1 | WW 61 | YW 94 | MM 38
 TEAT 1.5 | REA .57 | MARB .06 | BMI 440 | \$CHB 130

GOOD LOOKIN' WITH NO HOLES AT ALL!

This elite straight horned herd bull is good looking! His dam is a proven, efficient mid-sized cow with an ideal udder. His EPDs are strong with lower birth, high fertility & very good udder scores. Look at the length of body, shape from behind & overall balance!

65 CHURCHILL DOMINO 423M

REG # 44561626 | HORNED | 01/05/24

CL 1 DOMINO 0186H
 CL 1 DOMINO 267K 1ET (44347274) BW 82
 CL 1 DOMINETTE 719E 1ET WW 642
 HH ADVANCE 5044C ET
 CHURCHILL LADY 9212G (44053248)
 CHURCHILL LADY 4123B

CED 10.3 | BW 0.5 | WW 58 | YW 90 | MM 27
 TEAT 1.3 | REA .47 | MARB .20 | BMI 406 | \$CHB 131

HIGH QUALITY & THICK MADE!

This is a real high quality son of 267 out of a cow with a very ideal udder! He is long bodied, thick made, and deep!

CHURCHILL DOMINO 439M **66**

REG # 44561637 | HORNED | 01/07/24

CL1 DOMINO 0186H
CL1 DOMINO 267K 1ET (44347274) BW 91
CL1 DOMINETTE 719E 1ET WW 796
HH ADVANCE 3022A ET
CHURCHILL LADY 5187C (43586837)
CHURCHILL LADY 285Z

CED 2.7 | BW 3.1 | WW 70 | YW 110 | MM 43
TEAT 1.4 | REA .61 | MARB .29 | BMI 437 | \$CHB 167



CHURCHILL LADY 5187C - Dam of Lot 66
Picture taken summer of 2018



HE WEANED HEAVY AND HAS NEVER LOOKED BACK!

A high quality bigger framed 267 son out of a great cow who has been doing it all for 10 years! His maternal sister sold for \$20,000 for half interest in our female sale this fall where she tested out to be one of the most feed efficient Herefords there is.

CHURCHILL DOMINO 4148M ET **67**

REG # 44561583 | HORNED | 02/11/24

CL1 DOMINO 0186H
CL1 DOMINO 267K 1ET (44347274) BW 85
CL1 DOMINETTE 719E 1ET WW 685
EXR BANKROLL 8130 ET
CHURCHILL LADY 002H ET (44149706)
CHURCHILL LADY 645D ET

CED 4.6 | BW 1.8 | WW 63 | YW 109 | MM 37
TEAT 1.3 | REA .64 | MARB .21 | BMI 495 | \$CHB 148

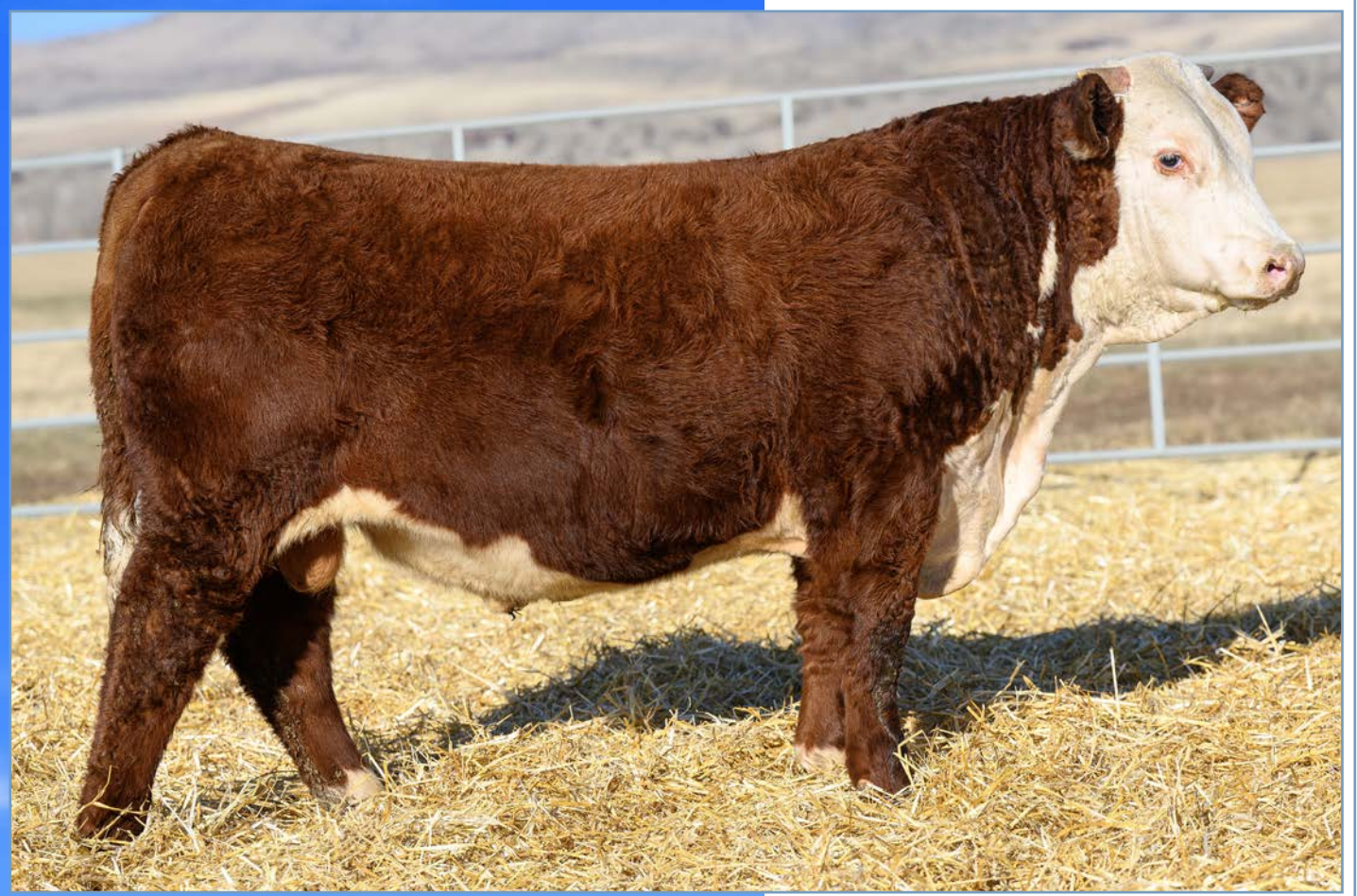


CHURCHILL LADY 002H ET - Dam of Lot 67



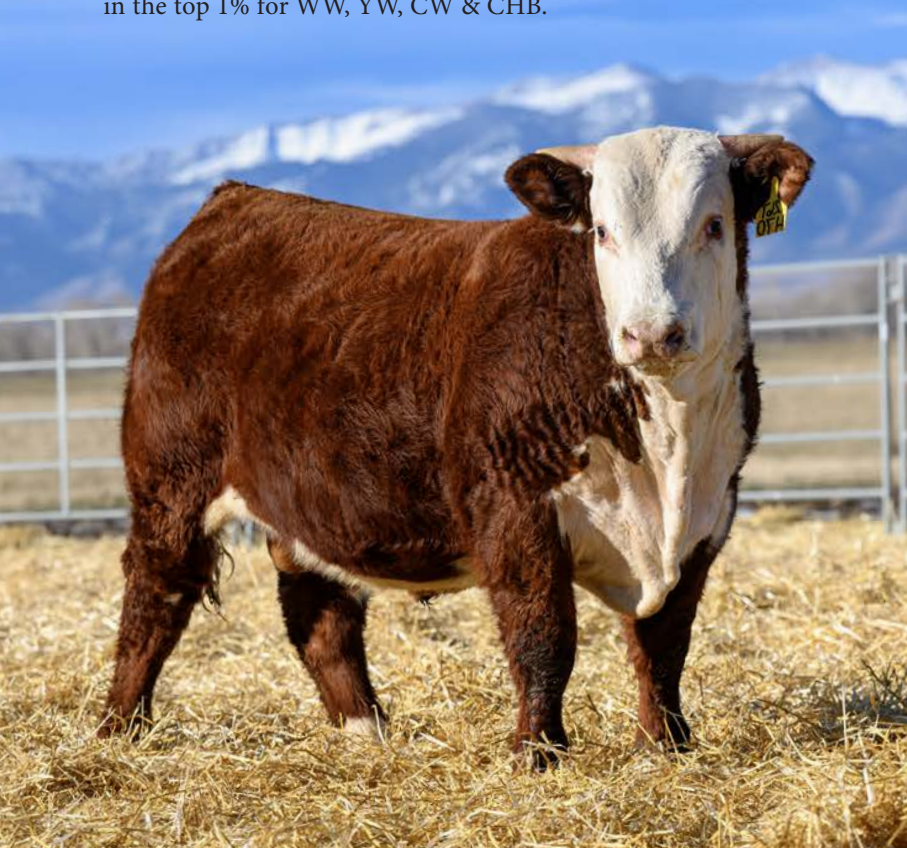
ONE OF THE BEST 267 SONS IN THE SALE — HE HAS IT ALL!

He is a power bull with tons of shape and thickness and depth. He is very well balanced in his structure. His EPDs are impeccable and are very balanced with top 3% BMI and top 9% CHB! His dam is one of the very elite cows in our herd with several excellent sons in this sale.



ONE OF OUR MOST POWERFUL BULLS!

This is one of the most powerful bulls in the sale with very elite carcass numbers! His dam is the fabulous 079H cow! When you combine her with 267, you have two incredible parents! He ranks in the top 1% for WW, YW, CW & CHB.



68 CHURCHILL DOMINO 470M ET

REG # 44561656 | HORNED | 01/15/24

CL 1 DOMINO 0186H
 CL 1 DOMINO 267K 1ET (44347274) BW 84
 CL 1 DOMINETTE 719E 1ET WW 772
 EXR BANKROLL 8130 ET
 CHURCHILL LADY 079H ET (P44149885)
 CHURCHILL LADY 7189E ET

CEB -.51 | BW 5.8 | WW 84 | YW 140 | MM 36
 TEAT 1.3 | REA .88 | MARB .31 | BMI 482 | \$CHB 193



CHURCHILL LADY 079H ET - Dam of Lot 68



CHURCHILL DOMINO 4212M ET **69**

REG # 44561622 | HORNED | 03/17/24

CL 1 DOMINO 0186H
CL 1 DOMINO 267K 1ET (44347274) BW 84
CL 1 DOMINETTE 719E 1ET WW 836

H THE PROFIT 8426 ET
H BL FIRST LADY 1101 ET (44269939)
H AC MARIANNE 231 ET

CED 2.2 | BW 3.0 | WW 59 | YW 98 | MM 29
TEAT 1.4 | REA .81 | MARB .39 | BMI 374 | \$CHB 176

ONE OF OUR YOUNGEST & ONE OF OUR BEST!

This 267 out of First Lady is a huge bodied bull with lots of style and quality to go with it. He weaned at 836 lbs! His EPDs are really strong across the board with terrific carcass and top 2% CHB. His dam is the ultimate power cow. He is young but he is really something.



H BL FIRST LADY 1101 ET - Dam of Lot 69



70 CHURCHILL DOMINO 4109M ET

REG # 44566750 | HORNERD | 01/29/24

CL 1 DOMINO 0186H BW 77
CL 1 DOMINO 267K 1ET (44347274) WW 717
CL 1 DOMINETTE 719E 1ET

CL 1 DOMINO 215Z
CL 1 DOMINETTE 850F (43903431)
CL 1 DOMINETTE 5123C 1ET

CED 3.7 | BW 0.4 | WW 68 | YW 113 | MM 33
TEAT 1.3 | REA .81 | MARB .36 | BMI 360 | \$CHB 186

71 CHURCHILL DOMINO 411M

REG # 44561567 | HORNERD | 01/04/24

CL 1 DOMINO 0186H BW 74
CL 1 DOMINO 267K 1ET (44347274) WW 645
CL 1 DOMINETTE 719E 1ET

HH ADVANCE 4075B ET
CHURCHILL LADY 6458D ET (43783403)
CHURCHILL LADY 284Z ET

CED 3.9 | BW 1.2 | WW 60 | YW 96 | MM 31
TEAT 1.3 | REA .69 | MARB .39 | BMI 406 | \$CHB 168

72 CHURCHILL DOMINO 415M

REG # 44561588 | HORNERD | 01/05/24

CL 1 DOMINO 0186H BW 73
CL 1 DOMINO 267K 1ET (44347274) WW 728
CL 1 DOMINETTE 719E 1ET

HH ADVANCE 4075B ET
CHURCHILL LADY 7197E ET (43802004)
CHURCHILL LADY 284Z ET

CED 5.5 | BW 2.3 | WW 72 | YW 113 | MM 31
TEAT 1.2 | REA .70 | MARB .29 | BMI 419 | \$CHB 166

73 CHURCHILL DOMINO 455M

REG # 44561649 | HORNERD | 01/10/24

CL 1 DOMINO 0186H BW 82
CL 1 DOMINO 267K 1ET (44347274) WW 755
CL 1 DOMINETTE 719E 1ET

CHURCHILL A1 ET
CHURCHILL LADY 554C (43586924)
CHURCHILL LADY 0120X

CED 5.8 | BW 2.3 | WW 73 | YW 115 | MM 42
TEAT 1.3 | REA .61 | MARB .34 | BMI 426 | \$CHB 172

74 CHURCHILL DOMINO 484M

REG # 44561662 | HORNERD | 01/20/24

CL 1 DOMINO 0186H BW 79
CL 1 DOMINO 267K 1ET (44347274) WW 675
CL 1 DOMINETTE 719E 1ET

CHURCHILL SENSATION 028X
CHURCHILL LADY 506C (43586752)
CHURCHILL LADY 302A

CED 4.6 | BW 0.4 | WW 58 | YW 94 | MM 32
TEAT 1.3 | REA .50 | MARB .21 | BMI 390 | \$CHB 118

75 CHURCHILL DOMINO 4112M

REG # 44561560 | HORNERD | 01/29/24

CL 1 DOMINO 0186H BW 92
CL 1 DOMINO 267K 1ET (44347274) WW 668
CL 1 DOMINETTE 719E 1ET

CL 1 DOMINO 6128D 1ET
CHURCHILL LADY 9114G (44044156)
CHURCHILL LADY 5130C ET

CED 1.5 | BW 3.2 | WW 65 | YW 106 | MM 33
TEAT 1.4 | REA .65 | MARB .25 | BMI 441 | \$CHB 147

76 CHURCHILL DOMINO 4126M

REG # 44561569 | HORNERD | 02/04/24

CL 1 DOMINO 0186H BW 81
CL 1 DOMINO 267K 1ET (44347274) WW 702
CL 1 DOMINETTE 719E 1ET

CHURCHILL SENSATION 028X
CHURCHILL LADY 835F (43919921)
CHURCHILL LADY 128Y

CED 6.7 | BW 1.5 | WW 59 | YW 94 | MM 38
TEAT 1.3 | REA .44 | MARB .24 | BMI 400 | \$CHB 136

77 CHURCHILL DOMINO 4166M

REG # 44561593 | HORNERD | 02/17/24

CL 1 DOMINO 0186H BW 73
CL 1 DOMINO 267K 1ET (44347274) WW 732
CL 1 DOMINETTE 719E 1ET

CHURCHILL SENSATION 028X
CHURCHILL LADY 343A (43638662)
CHURCHILL LADY 1102Y

CED 6.0 | BW 0.4 | WW 58 | YW 91 | MM 33
TEAT 1.3 | REA .43 | MARB .32 | BMI 439 | \$CHB 140

CE



CHURCHILL DOMINO 4077 **78**

REG # 44614307 | HORNED | 01/14/24

CL 1 DOMINO 0186H
 CL 1 DOMINO 267K 1ET (44347274) BW 85
 CL 1 DOMINETTE 719E 1ET WW 805
 CHURCHILL GALLATIN 5211C ET
 CHURCHILL LADY 890F (43919959)
 CHURCHILL LADY 4222B

CED -0.3 | BW 4.0 | WW 73 | YW 122 | MM 39
 TEAT 1.3 | REA .77 | MARB .26 | BMI 429 | \$CHB 154



CHURCHILL STANFIELD 3122 - Lot 78's \$130K Maternal Brother

Stanfield's MATERNAL BROTHER

The maternal brother to last year's \$130,000 high selling Stanfield!

This 267 son is a bigger framed, deep bodied powerhouse with a huge weaning weight. He is bred to sire calves that grow very fast.

He ranks in the top 10% for WW, YW, milk, carcass weight, ribeye, and CHB.



CHURCHILL LADY 890F - Dam of Lot 78



CHURCHILL LADY 850 - Dam of Lot 79



LOTS 79-81

DOMINO

0186H

Sons

79 CCC BUFORD H DOMINO 4131M

REG # 44567105 | HORNED | 02/06/24

HH ADVANCE 7156E ET
CL 1 DOMINO 0186H (44139007) BW 79
CL 1 DOMINETTE 6162D WW 711
CL 1 DOMINO 215Z
CL 1 DOMINETTE 850F (43903431)
CL 1 DOMINETTE 5123C 1ET

CED 5.4 | BW 0.7 | WW 66 | YW 108 | MM 37
TEAT 1.4 | REA .74 | MARB .45 | BMI 465 | \$CHB 183

WE SHOULD HAVE TAKEN HIS PICTURE!

The best in proven L1 genetics! 850's natural calf is really solid with incredible numbers! His low birth, fast growth, good udder quality, and extreme breed leading carcass numbers should allow for huge profit potential!

80 CHURCHILL DOMINO 489M

REG # 44561665 | HORNED | 01/21/24

HH ADVANCE 7156E ET
CL 1 DOMINO 0186H (44139007) BW 71
CL 1 DOMINETTE 6162D WW 689
CHURCHILL SENSATION 028X
CHURCHILL LADY 605D (43702854)
CHURCHILL LADY 4123B

CE

CED 8.0 | BW -1.3 | WW 49 | YW 80 | MM 37
TEAT 1.4 | REA .30 | MARB .29 | BMI 393 | \$CHB 127

YOU CAN USE HIM ON HEIFERS!

A calving ease 0186 son who's big bodied & thick-made! He's out of a proven Sensation cow, & 0186 daughters are phenomenal producers, so he'll be highly maternal! He is very balanced in his structure & numbers.



**CHURCHILL
DOMINO 427M 81**

REG # 44561629 | HORNED | 01/05/24

HH ADVANCE 7156E ET
CL1 DOMINO 0186H (44139007)
CL1 DOMINETTE 6162D

BW 76
WW 699

CHURCHILL A1 ET
CHURCHILL LADY 450B (43474939)
CHURCHILL LADY 128Y

CE

CED 9.6 | BW 1.0 | WW 58 | YW 86 | MM 31
TEAT 1.4 | REA .22 | MARB .32 | BMI 316 | \$CHB 119

The Classic Hereford Bull is what I call this guy! He's so much like his sire, the maternal machine 0186, but with more muscle & shape. He can really put an operation in the driving seat for selling bulls & building a cowherd!

He oozes quality & efficiency & has excellent numbers in every area. His dam is an 11-year-old cow, with an excellent udder, who never misses.

Bulls like this made the Hereford breed famous and they are why the breed's popular today!

THE *Classic*
HEREFORD BULL!





CHURCHILL LADY 5227 - Dam of Lot 82



HH ADVANCE 2116K - Sire of Lot 82

82 CHURCHILL ADVANCE 4201M ET

REG # 44571036 | HORNED | 03/10/24

HH ADVANCE 0022H ET
HH ADVANCE 2116K (44346768) BW 81
HH MISS ADVANCE 0001H WW 786

CL 1 DOMINO 215Z
CL 1 DOMINETTE 719E 1ET (43800294)
CL1 DOMINETTE 4176B

CED 5.3 | BW 0.1 | WW 59 | YW 89 | MM 24
TEAT 1.4 | REA .34 | MARB .50 | BMI 353 | \$CHB 163

HUGE WEANING WEIGHT & POPULAR L1 PEDIGREE

This March born straight L1 bull has a tremendous amount going for him! He combines the two most popular L1 bulls in the 2023 sale season being sired by the Holden 2116 bull and out of the dam of the Cooper bull 267K.

He has a huge weaning weight & a very strong look. His EPDs are awesome with low 8% BW, top 10% udder & teat + top 3% Marb.

He is really coming on strong and looks fantastic!



CHURCHILL **83** BH EXPEDITION 416M

REG # 44566755 | HORNED | 01/05/24

NJW LONG HAUL 36E ET
SR EXPEDITION 619G ET (P44054044) BW 79
CHURCHILL LADY 7189E ET WW 735

CHURCHILL DESPERADO 029H
CHURCHILL LADY 219K ET (P44378076)
BR VALIDATED B413 6035 7098

CED 6.5 | BW 0.8 | WW 74 | YW 121 | MM 42
TEAT 1.5 | REA .38 | MARB .65 | BMI 559 | \$CHB 169

A GREAT HORNED BULL WITH A DIFFERENT PEDIGREE!

This is the natural calf from our record selling female 219K! She is an ideal cow with a perfect udder and quiet disposition.

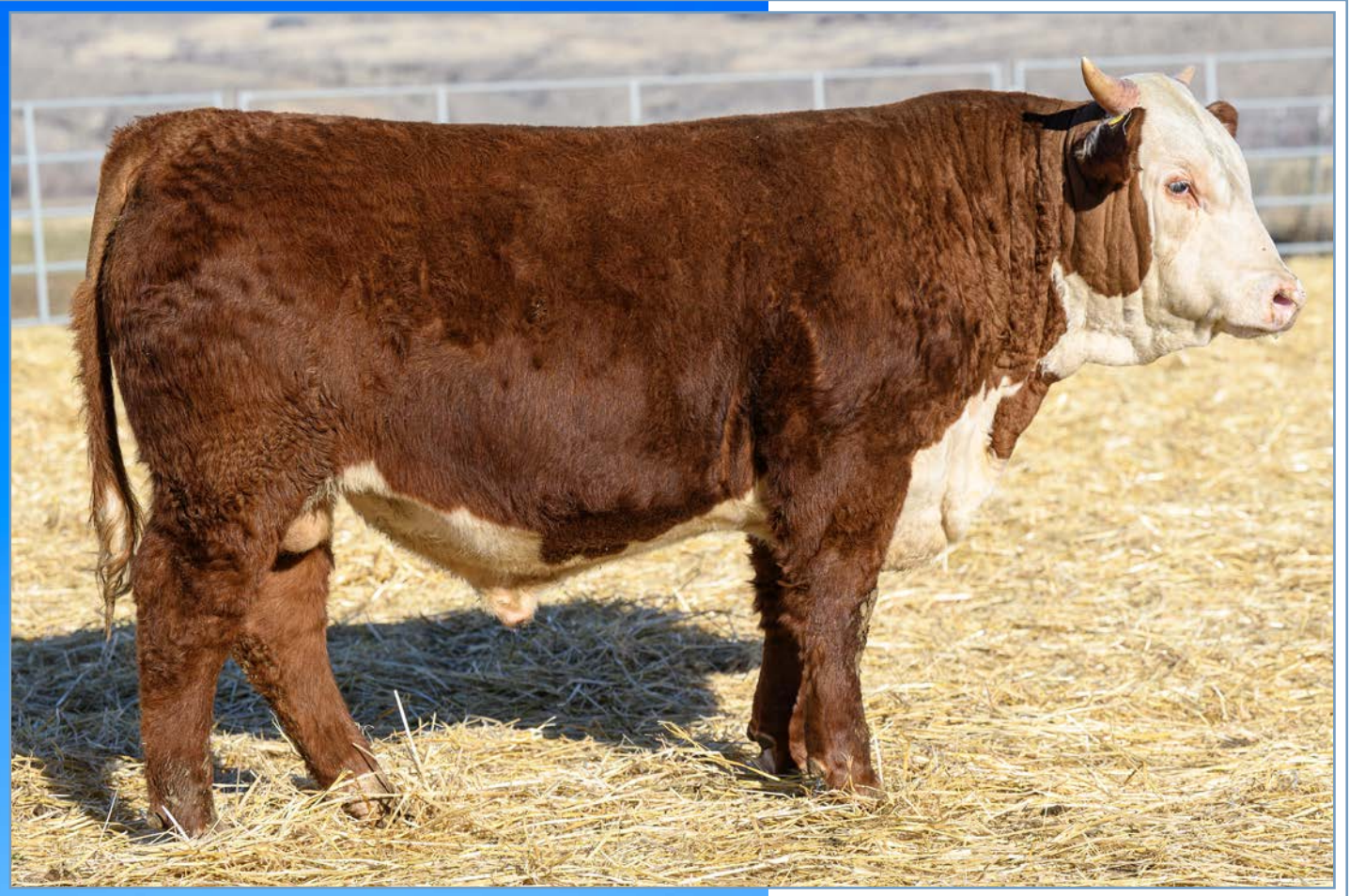
416 has some of the best EPDs you will see: low birth, top 3% growth, top 1% scrotal, fertility, milk, and Marb with very high udder quality! This gives him top 1% BMI and top 4% CHB!



CHURCHILL LADY 219K - Dam of Lot 83



BR VALIDATED B413 6035 7098 - Maternal Granddam of Lot 83



LOOK AT THE BODY ON THIS BULL!!!

This guy is a real powerhouse with loads of muscle and depth. His dam is the great 850 cow and his sire has really done a fantastic job at Buford Ranches. These High Noon cattle are the real deal!

84 CHURCHILL HIGH NOON 3406L ET

REG # 44592448 | HORNED | 12/10/23

CHURCHILL GRIT 6244D ET
 CHURCHILL HIGH NOON 8339F ET (44000066) BW 84
 H FHF 9116 RITA 11D ET WW 785

CL 1 DOMINO 215Z
 CL 1 DOMINETTE 850F (43903431)
 CL 1 DOMINETTE 5123C 1ET

CE 2.5 | BW 2.4 | WW 69 | YW 103 | MM 35
 TEAT 1.3 | REA .81 | MARB .30 | BMI 375 | \$CHB 162



CHURCHILL HIGH NOON 8339F - Sire of Lot 84



**CHURCHILL
ADVANCE 3416L ET 85**

REG # 44592464 | HORNED | 12/13/23

HH ADVANCE 8132F
 HH ADVANCE 0043H (44128619) BW 83
 HH MISS ADVANCE 8046F WW 705
 CL1 DOMINO 0186H
 CHURCHILL LADY 205K (44377978) CE
 CHURCHILL LADY 032H

CED 6.7 | BW 0.0 | WW 63 | YW 107 | MM 30
 TEAT 1.3 | REA .30 | MARB .28 | BMI 405 | \$CHB 126

**CHURCHILL
ADVANCE 403M 86**

REG # 44566747 | HORNED | 01/01/24

CL1 DOMINO 883F1ET
 HH ADVANCE 0270H (44203436) BW 85
 HH MISS ADVANCE 8345F ET WW 676
 CL1 DOMINO 0186H
 CHURCHILL LADY 205K (44377978)
 CHURCHILL LADY 032H

CED 5.8 | BW 0.8 | WW 63 | YW 102 | MM 41
 TEAT 1.2 | REA .81 | MARB .22 | BMI 532 | \$CHB 150

**CHURCHILL
ADVANCE 3402L ET 87**

REG # 44592444 | HORNED | 12/08/23

HH ADVANCE 7156E ET
 CL1 DOMINO 0186H (44139007) BW 75
 CL1 DOMINETTE 6162D WW 710
 CL1 DOMINO 0186H
 CHURCHILL LADY 205K (44377978) CE
 CHURCHILL LADY 032H

CED 7.1 | BW 1.7 | WW 69 | YW 107 | MM 40
 TEAT 1.2 | REA .88 | MARB .25 | BMI 476 | \$CHB 169

LOT 85 A curve bending big spread bull out of a terrific young 0186 cow! He will add a lot of marketability to your calf crop.

LOT 86 A moderate low birth weight son of the Holden high seller of 2022 and out of of a great young two year old 205K! This young cow is a donor for us and is an efficient power cow out of the maternal machine 0186H. This bull has very elite numbers with top 1% Baldy Maker index and top 10% CHB!



88 CHURCHILL EXPEDITION 404M

REG # 44566748 | HORNED | 01/01/24

NJW LONG HAUL 36E ET
SR EXPEDITION 619G ET (P44054044) BW 86
CHURCHILL LADY 7189E ET WW 667

BIRDWELL VANGUARD 5022 9337
CHURCHILL JR LADY 231K (P44378129)
CHURCHILL LADY 645D ET

CED 0.4 | BW 0.9 | WW 59 | YW 98 | MM 42
TEAT 1.5 | REA .59 | MARB .34 | BMI 573 | \$CHB 121

89 CHURCHILL DESPERADO 4169M

REG # 44561594 | HORNED | 02/17/24

CHURCHILL BROADWAY 858F
CHURCHILL DESPERADO 029H (P44149846) BW 85
CHURCHILL LADY 8251F ET WW 668

NJW LONG HAUL 36E ET
CHURCHILL LADY 0239H (44149827)
CHURCHILL LADY 794E

CED -2.3 | BW 4.8 | WW 76 | YW 125 | MM 38
TEAT 1.2 | REA .46 | MARB .30 | BMI 410 | \$CHB 155

90 CHURCHILL DESPERADO 4181M

REG # 44561603 | HORNED | 02/26/24

CHURCHILL BROADWAY 858F
CHURCHILL DESPERADO 029H (P44149846) BW 79
CHURCHILL LADY 8251F ET WW 671

CL 1 DOMINO 6128D 1ET
CHURCHILL LADY 9435G (44136391)
LW 28X CHURCHILL LADY 500C

CED -1.5 | BW 2.2 | WW 68 | YW 108 | MM 38
TEAT 1.4 | REA .35 | MARB .33 | BMI 459 | \$CHB 138



CHURCHILL ROUTE 66 4102M 91

REG # 44561551 | HORNED | 01/26/24

KCF BENNETT DEVOUT B716 ET
NJW ROUTE 66 (P44280289) BW 86
NJW 11B 6589 RITA 32G ET WW 675

TH MASTERPLAN 183F
PCL 183F MISS EFFECTS 27K (P44439830)
PCL 100E MISS EFFECTS 101H

CED 6.2 | BW 2.3 | WW 66 | YW 108 | MM 32
TEAT 1.5 | REA .54 | MARB .24 | BMI 490 | \$CHB 128

CHURCHILL DOMINO 4188M 92

REG # 44561608 | HORNED | 03/01/24

CL1 DOMINO 001H
HH ADVANCE 2062K ET (44346721) BW 78
HH MISS ADVANCE 6317D WW 616

CL1 DOMINO 942G
CHURCHILL LADY 1145J (44268899)
CHURCHILL LADY 518C

CED 6.3 | BW 1.2 | WW 58 | YW 90 | MM 36
TEAT 1.3 | REA .49 | MARB .29 | BMI 484 | \$CHB 154

CHURCHILL DOMINO 4189M 93

REG # 44561609 | HORNED | 03/02/24

CL1 DOMINO 001H
HH ADVANCE 2062K ET (44346721) BW 76
HH MISS ADVANCE 6317D WW 624

CHURCHILL NIGHTCAP 7256E
CHURCHILL LADY 976G (44044263)
CHURCHILL LADY 788E

CED 7.7 | BW 1.6 | WW 53 | YW 92 | MM 33
TEAT 1.3 | REA .23 | MARB .13 | BMI 388 | \$CHB 111





FALL BULLS



BIGGER, OLDER AND MORE MATURE

Our fall bulls this year are lower in number, but high in quality. This is an outstanding group sired by the maternal machine 0186 and the popular Red Cloud.

These bulls were raised pretty lean but they are active and ready for heavy work this spring.

Make sure you check their EPDs and dollar indexes as they are some of the highest in the breed!



CHURCHILL RED CLOUD 3353L 94

REG # 44601238 | POLLED | 08/13/23

CHURCHILL RED BARON 8300F ET BW 75
 CHURCHILL RED CLOUD 0376H ET (P44273826) BR VALIDATED B413 6035 7098 WW 658

TH 133U 719T UPGRADE 69X
 MOHICAN HAZEL 68A (P43386395)
 KACZ 4K 4R REVOLUTION Z1

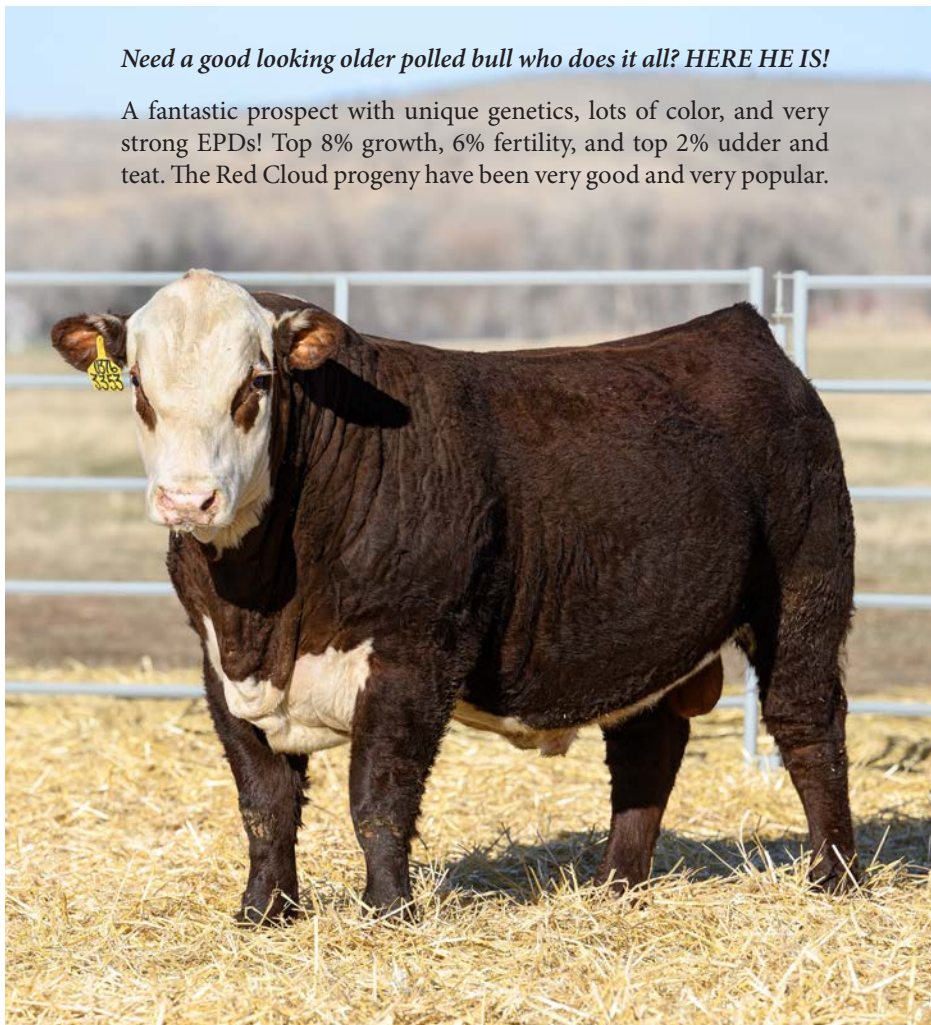
CEG 4.1 | BW 2.0 | WW 67 | YW 107 | MM 31
 TEAT 1.5 | REA .64 | MARB .10 | BMI 472 | SCHB 129



CHURCHILL RED CLOUD 0376H ET - Sire of Lot 94

Need a good looking older polled bull who does it all? HERE HE IS!

A fantastic prospect with unique genetics, lots of color, and very strong EPDs! Top 8% growth, 6% fertility, and top 2% udder and teat. The Red Cloud progeny have been very good and very popular.





95 CHURCHILL DOMINO 3362L

REG # 44601610 | SCURRED | 08/26/23

HH ADVANCE 7156E ET BW 78
 CL1 DOMINO 0186H (44139007) WW 637
 CL1 DOMINETTE 6162D

H/TSR/CHEZ/FULL THROTTLE ET
 CHURCHILL LADY 509C ET (P43586755)
 CHURCHILL LADY 002X ET

CED 2.8 | BW 1.8 | WW 62 | YW 90 | MM 32
 TEAT 1.4 | REA .74 | MARB .19 | BMI 406 | \$CHB 150

A stout built, big bodied son of 0186 that will sire great females and calves that are efficient and fast gaining!



CHURCHILL LADY 687 - Dam of Lot 96

96 CHURCHILL DOMINO 3350L ET

REG # 44601217 | HORNED | 08/10/23

HH ADVANCE 7156E ET BW 80
 CL1 DOMINO 0186H (44139007) WW 730
 CL1 DOMINETTE 6162D

HH ADVANCE 1013Y ET
 CL1 DOMINETTE 687D 1ET (43691979)
 CL1 DOMINETTE 440P 1ET

CED 2.5 | BW 2.2 | WW 58 | YW 91 | MM 29
 TEAT 1.5 | REA .48 | MARB .21 | BMI 368 | \$CHB 129

OUR HEAVIEST WEANING FALL BULL!

This stout made 0186 x 687D son combines two of the most potent L1 animals into one package! His numbers are really solid, and he was our heaviest weaning fall bull!

97 CHURCHILL DOMINO 3357L

REG # 44601248 | HORNED | 08/16/23

HH ADVANCE 7156E ET BW 75
 CL1 DOMINO 0186H (44139007) WW 753
 CL1 DOMINETTE 6162D

BB 102 BRITISHER 6038
 CHURCHILL LADY 8139F (44000150)
 CHURCHILL LADY 5272C ET

CED 4.0 | BW 0.8 | WW 61 | YW 84 | MM 41
 TEAT 1.4 | REA .65 | MARB .21 | BMI 414 | \$CHB 139

98 CHURCHILL DOMINO 3359L

REG # 44601279 | HORNED | 08/19/23

HH ADVANCE 7156E ET BW 70
 CL1 DOMINO 0186H (44139007) WW 577
 CL1 DOMINETTE 6162D

NJW 98S R117 RIBEYE 88X ET
 CHURCHILL LADY 5130C ET (43586785)
 RST MS 1000 BLAZER 2029

CED 3.0 | BW 1.6 | WW 52 | YW 93 | MM 32
 TEAT 1.5 | REA .37 | MARB .27 | BMI 384 | \$CHB 135

99 CHURCHILL DOMINO 3360L

REG # 44601606 | POLLED | 08/21/23

HH ADVANCE 7156E ET BW 74
 CL1 DOMINO 0186H (44139007) WW 640
 CL1 DOMINETTE 6162D

CHURCHILL BROADWAY 858F
 CHURCHILL LADY 1221J ET (P44267908)
 BR VALIDATED B413 6035 7098

CED 2.9 | BW 1.9 | WW 66 | YW 118 | MM 36
 TEAT 1.4 | REA .71 | MARB .59 | BMI 487 | \$CHB 188

**CHURCHILL
DOMINO 3363L 100**

REG # 44601612 | HORNED | 09/01/23

HH ADVANCE 7156E ET
CL 1 DOMINO 0186H (44139007) BW 75
CL 1 DOMINETTE 6162D WW 697

CHURCHILL TSC FIRST RATE 6206D
CHURCHILL LADY 8346F (43996026)
CHURCHILL LADY 1106Y

CED 6.7 | BW 1.8 | WW 59 | YW 98 | MM 41
TEAT 1.4 | REA .66 | MARB .34 | BMI 410 | \$CHB 154

**CHURCHILL
DOMINO 3365L 101**

REG # 44601615 | HORNED | 09/02/23

HH ADVANCE 7156E ET
CL 1 DOMINO 0186H (44139007) BW 74
CL 1 DOMINETTE 6162D WW 606

NJW LONG HAUL 36E ET
CHURCHILL LADY 9423G (P44136381)
CHURCHILL LADY 6227D

CED 5.3 | BW 0.9 | WW 62 | YW 105 | MM 40
TEAT 1.5 | REA .60 | MARB .24 | BMI 494 | \$CHB 148

**CHURCHILL
DOMINO 3368L 102**

REG # 44601623 | POLLED | 10/03/23

HH ADVANCE 7156E ET
CL 1 DOMINO 0186H (44139007) BW 75
CL 1 DOMINETTE 6162D WW 632

CHURCHILL SENSATION 028X
CHURCHILL LADY 4111B (43481512)
H W4 FALLON 2058 ET

CED 7.1 | BW 0.5 | WW 55 | YW 95 | MM 40
TEAT 1.4 | REA .50 | MARB .19 | BMI 458 | \$CHB 133

**CHURCHILL
DOMINO 3367L 103**

REG # 44601622 | POLLED | 09/24/23

CHURCHILL RED BARON 8300F ET
CHURCHILL RED CLOUD 0376H ET (P44273826) BW 75
BR VALIDATED B413 6035 7098 WW 608

HH ADVANCE 0132X
CHURCHILL LADY 4343B (43565571)
CHURCHILL LADY 1135Y

CED 3.6 | BW 2.0 | WW 57 | YW 99 | MM 32
TEAT 1.3 | REA .43 | MARB .19 | BMI 362 | \$CHB 132

ADVANCE 0186 SIRE OF LOTS 95-102





2-YR-OLDS



HIGH QUALITY AND READY TO TURN OUT

This is a really good set of older bulls!
Some are from our ET program and
were a bit too young to sell last year.

They are stout and powerful, but in
reasonable condition. If you need
bulls to get a lot of cows bred this
spring, these are your guys.

Check them out and then look at their
EPDs. What you see on paper matches
up with what you see in person!



CHURCHILL FINAL PRINT 3130L ET **104**

REG # 44462192 | HOMO | 01/25/23

BOYD 31Z BLUEPRINT 6153
RST FINAL PRINT 0016 (P44178105)
RST MS X651 TESTED 8032

BW 85

WW 640

CHURCHILL BROADWAY 858F
CHURCHILL LADY 1221J ET (P44267908)
BR VALIDATED B413 6035 7098

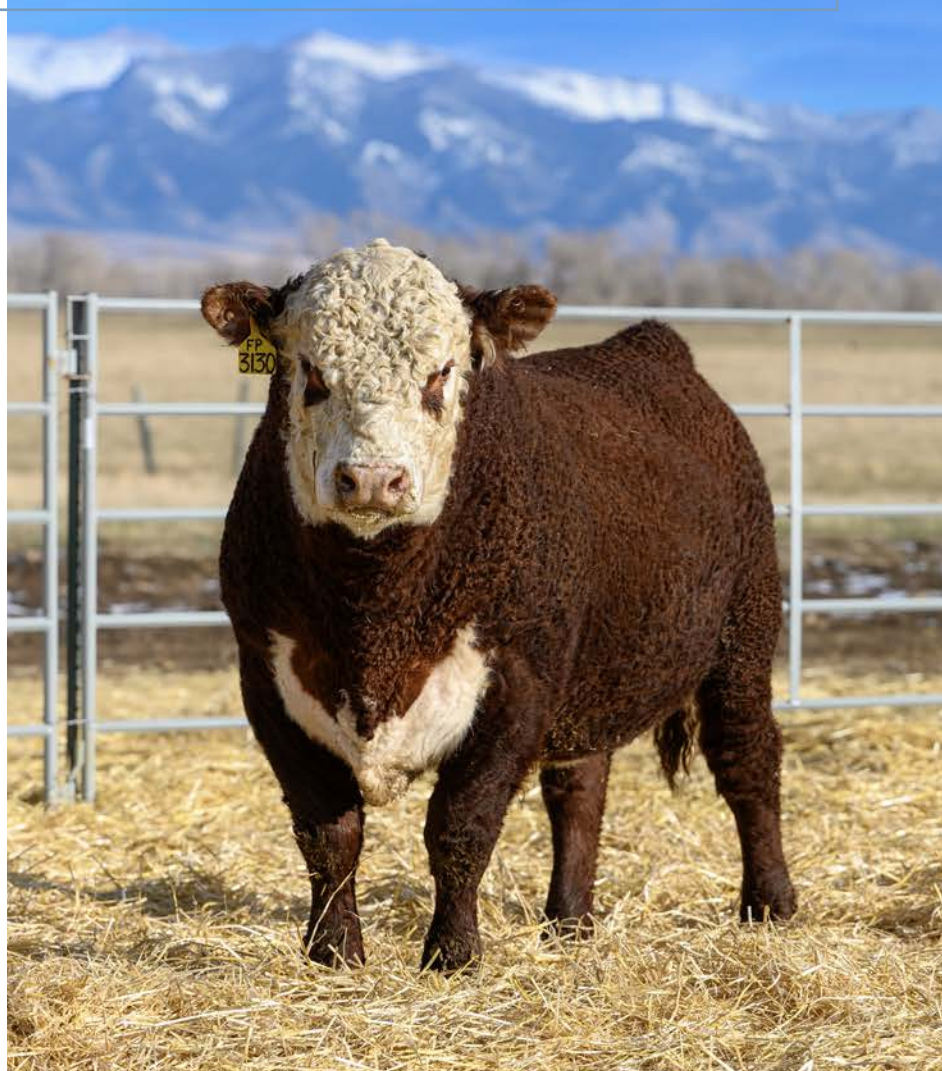
CED 6.0 | BW 1.2 | WW 77 | YW 123 | MM 43
TEAT 1.5 | REA .98 | MARB .36 | BMI 552 | \$CHB 181

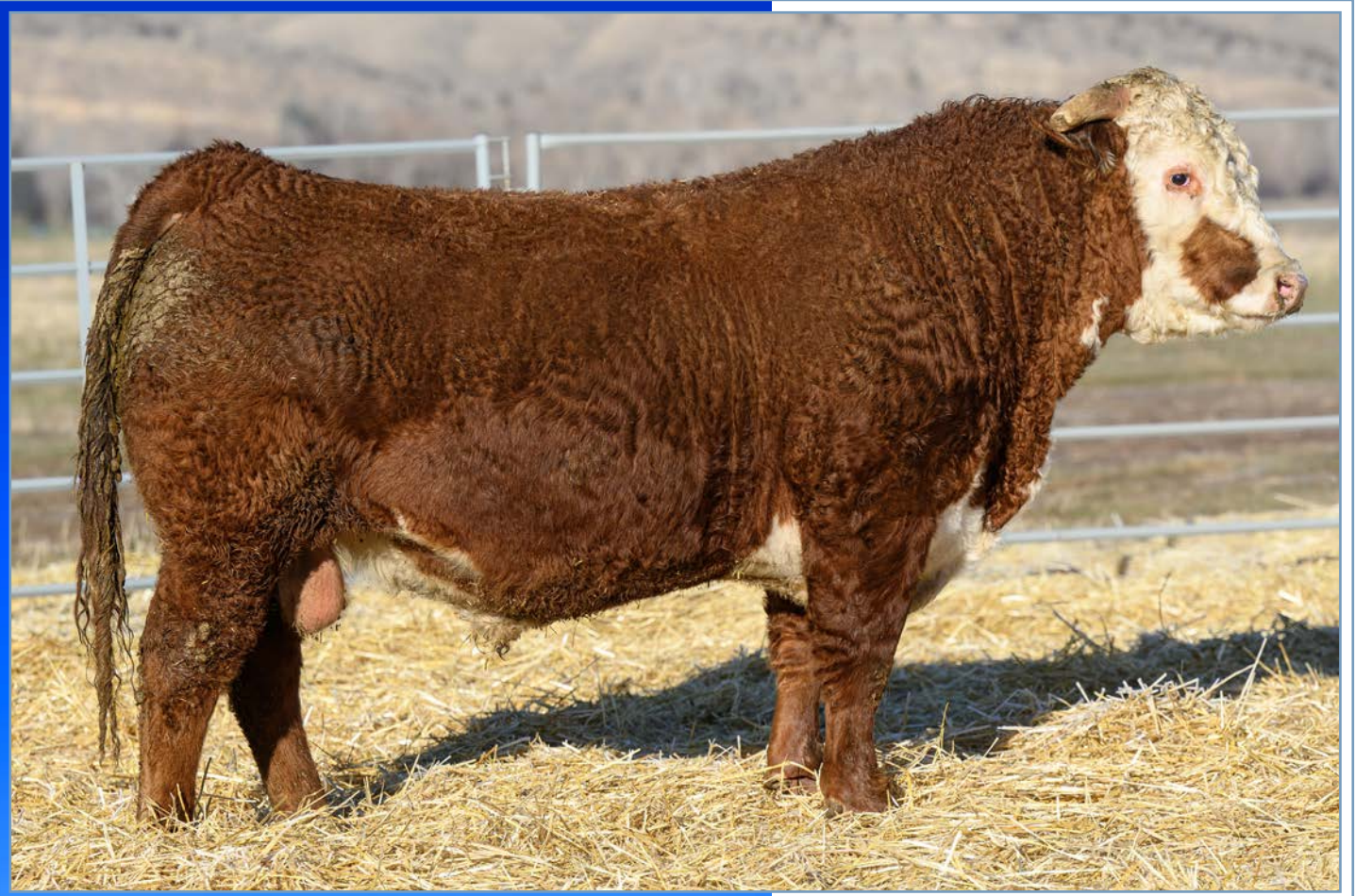
HE'S A PROFIT MAKER!

A genetic giant that lost his mother early on in life, which held him back.

His EPDs are some of the best in the sale: top 1% weaning, milk, udder quality, and ribeye with top 1% BMI and CHB!

This is a profit making bull!





*MODERATE, THICK MADE, HEAVY
MUSCLED SON OF 0159 WITH BIG
CARCASS NUMBERS!*

105 CHURCHILL ADVANCE 3103L

REG # 44462169 | HORNED | 01/20/23

HH ADVANCE 7088E BW 82
HH ADVANCE 0159H (44128721) WW 613
HH MISS ADVANCE 6317D

LJS MARK DOMINO 1321
CHURCHILL LADY 8205F (43919866)
CHURCHILL LADY 626D

CED -0.7 | BW 3.9 | WW 58 | YW 87 | MM 37
TEAT 1.3 | REA .86 | MARB .25 | BMI 328 | \$CHB 140



CHURCHILL ADVANCE 3138L 106

REG # 44462199 | HORNED | 01/26/23

HH ADVANCE 7088E BW 82
HH ADVANCE 0159H (44128721) WW 592
HH MISS ADVANCE 6317D
HH ADVANCE 3022A ET
CHURCHILL LADY 5168C (43586817)
CHURCHILL LADY 2158Z ET

CED 5.9 | BW 0.8 | WW 53 | YW 76 | MM 35
TEAT 1.4 | REA .41 | MARB .30 | BMI 464 | \$CHB 127

WE THINK YOU WILL LIKE HIM!

I think you will really like this bull that is thick and balanced with lots of pigment who has big fertility and maternal numbers!



CHURCHILL ADVANCE 3127L 107

REG # 44462189 | HORNED | 01/24/23

HH ADVANCE 7088E BW 84
HH ADVANCE 0159H (44128721) WW 560
HH MISS ADVANCE 6317D
HH ADVANCE 5044C ET
CHURCHILL LADY 7432E (43893233)
CHURCHILL LADY 106Y

CED 5.5 | BW 3.0 | WW 54 | YW 75 | MM 29
TEAT 1.3 | REA .53 | MARB .40 | BMI 496 | \$CHB 142



HH ADVANCE 0159H - SIRE OF LOTS 104-107

CHURCHILL DESPERADO 365L 108

REG # 44462340 | POLLED | 01/13/23

CHURCHILL BROADWAY 858F BW 87
CHURCHILL DESPERADO 029H (P44149846) WW 660
CHURCHILL LADY 8251F ET
CHURCHILL STUD 3134A
CHURCHILL LADY 678D (P43703059)
CHURCHILL LHF LADY 3233A

CED -4.0 | BW 5.1 | WW 66 | YW 116 | MM 32
TEAT 1.3 | REA .43 | MARB .47 | BMI 473 | \$CHB 159

A REAL PROFIT MAKER!

A stout powerful and long bodied son of Desperado with top 3% yearling, 10% fertility, and 8% udder. A real profit maker with top 7% CHB and BMI!



109 CHURCHILL DESPERADO 3247L

REG # 44462298 | SCURRED | 03/11/23

CHURCHILL BROADWAY 858F BW 89
CHURCHILL DESPERADO 029H (P44149846) WW 651
CHURCHILL LADY 8251F ET

CHURCHILL JR FRONTLINE 6200D
CHURCHILL LADY 964G (P44044255)
CHURCHILL LADY 751E

CED 1.4 | BW 2.7 | WW 73 | YW 117 | MM 42
TEAT 1.5 | REA .47 | MARB .10 | BMI 524 | \$CHB 121

110 CHURCHILL DESPERADO 3243L

REG # 44462295 | HORNED | 03/07/23

CHURCHILL BROADWAY 858F BW 78
CHURCHILL DESPERADO 029H (P44149846) WW 688
CHURCHILL LADY 8251F ET

CHURCHILL ADVANCE 756E
CHURCHILL LADY 933G (P44053095)
CHURCHILL LADY 704E

CED -0.3 | BW 3.3 | WW 79 | YW 124 | MM 44
TEAT 1.4 | REA .57 | MARB .21 | BMI 509 | \$CHB 161

111 CHURCHILL VANGUARD 3244L ET

REG # 44462296 | HOMO | 03/08/23

EFBEEF BR VALIDATED B413 BW 79
BIRDWELL VANGUARD 5022 9337 (P44021997) WW 691
BR SENSATION 028X 3335 5022

C ETF WILDCAT 4248 ET
CHURCHILL LADY 807F ET (P43919787)
CHURCHILL LADY 2114Z

CED 1.3 | BW 2.6 | WW 60 | YW 100 | MM 36
TEAT 1.3 | REA .92 | MARB .51 | BMI 509 | \$CHB 166

112 CHURCHILL THUNDER 3212L ET

REG # 44462267 | HORNED | 02/16/23

DM ALL AROUND 904G ET BW 77
CHURCHILL RED THUNDER 133J ET (P44267942) WW 562
BR VALIDATED B413 6035 7098

GOLDEN OAK OUTCROSS 18U
CHURCHILL LADY 1162Y ET (43184480)
DCC 8006 PATTI 4266 ET

CED 0.5 | BW 3.9 | WW 61 | YW 96 | MM 30
TEAT 1.4 | REA .97 | MARB .32 | BMI 478 | \$CHB 150

113 CHURCHILL DOMINO 3208L

REG # 44462262 | HORNED | 02/16/23

HH ADVANCE 7156E ET BW 84
CL 1 DOMINO 0186H (44139007) WW 654
CL 1 DOMINETTE 6162D

CL 1 DOMINO 6128D 1ET
CHURCHILL LADY 880F (43919952)
CHURCHILL LADY 538C

CED 4.9 | BW 1.0 | WW 57 | YW 90 | MM 34
TEAT 1.3 | REA .64 | MARB .36 | BMI 411 | \$CHB 163

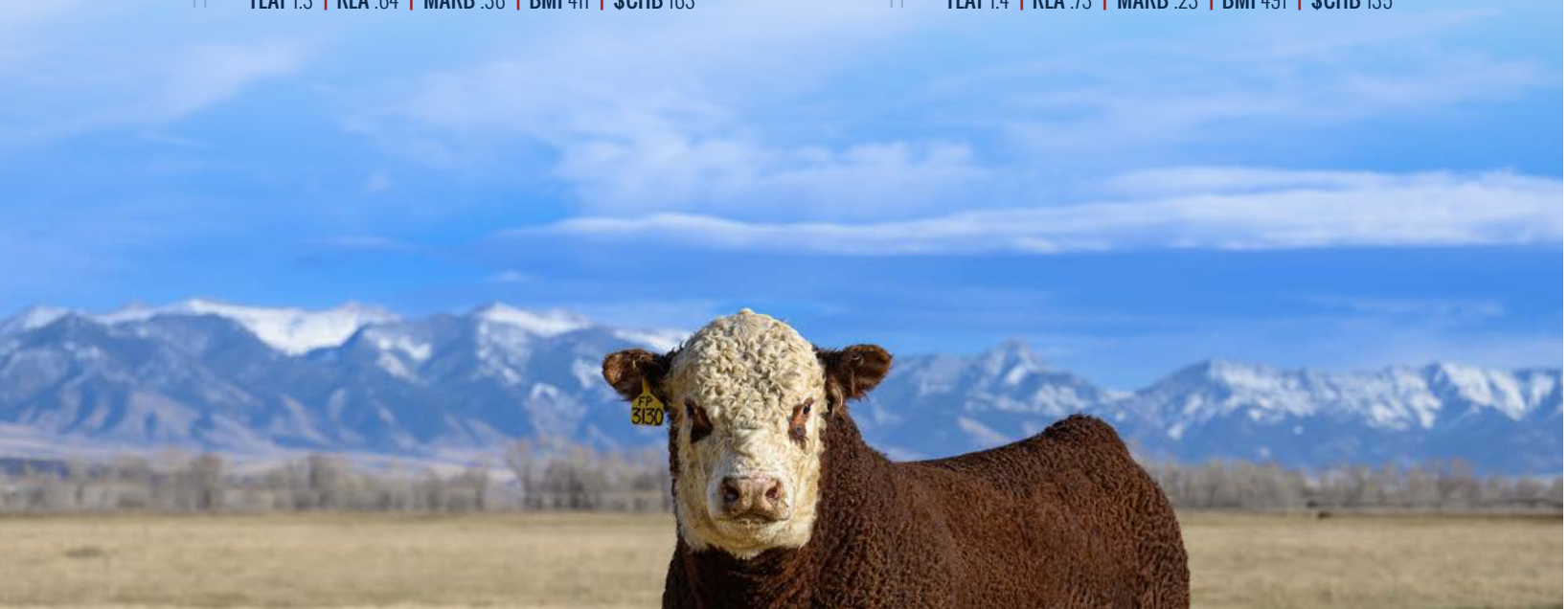
114 CHURCHILL BANKROLL 3228L

REG # 44462282 | HORNED | 02/27/23

EXR BANKROLL 8130 ET BW 69
CHURCHILL BANKROLL 015H ET (44149769) WW 575
CHURCHILL LADY 645D ET

CHURCHILL GALLATIN 5211C ET
CHURCHILL LADY 794E (43802116)
CHURCHILL LADY 1140Y

CED 3.4 | BW 2.9 | WW 56 | YW 94 | MM 31
TEAT 1.4 | REA .73 | MARB .23 | BMI 491 | \$CHB 135



MEET OUR STAFF



*Megan
Leep*

*Dale
Venhuizen*

*Nancy
Venhuizen*

Lark

*Shiloh
Klein*

*Olivia
Leep*

*Colby
Atchinson*

PARTNERSHIP WITH TRANS OVA

We are very happy with our partnership with Trans Ova Genetics as a satellite center. Every two weeks Dr Tim Gibbs, DMV and Annika Stampfel, embryologist come to our ranch to IVF flush donors. Abby Leachman serves as our customer service representative. All three of these people are very knowledgeable and professional. Megan Leep and Shiloh Klein from our staff are also heavily involved on flush days. The ovacyte counts on our Hereford donors have been excellent and Dr. Tim's pregnancy rates in recips have been super! We have been amazed at how well our young donors have performed in this program which has allowed us to sell more of our best females. IVf flushing has a very minimal impact on the donor and has become a great tool for us to increase our numbers of superior cattle.



(L-R) Annika Stampfel, Dr. Tim Gibbs, Shiloh Klein, Megan Leep, Dale & Nancy Venhuizen

SEMEN SIRES

THE MOST AFFORDABLE WAY
TO ACQUIRE CHURCHILL INFLUENCE



CHURCHILL W4 SHERMAN 2157K ET

REG. SEMEN \$100
NO CERTIFICATE
SEXED FEM. AVAILABLE

CED 0.5 | BW 1.8 | WW 66 | YW 105 | MM 31
Teat 1.5 | REA 1.09 | Marb .43 | BMI 492 | CHB 190



HH ADVANCE 3107L ET

SEMEN \$100
CERTIFICATES \$75

CED 0.7 | BW 2.0 | WW 71 | YW 117 | MM 30
Teat 1.4 | REA .68 | Marb .32 | BMI 425 | CHB 161



CHURCHILL STANFIELD 3122L

SEMEN \$100
NO CERTIFICATE

CED 1.7 | BW 4.6 | WW 77 | YW 134 | MM 44
Teat 1.4 | REA .74 | Marb .33 | BMI 475 | CHB 162



CL 1 DOMINO 0186H

SEMEN \$50
CERTIFICATES \$75

CED 6.3 | BW 0.5 | WW 63 | YW 107 | MM 38
Teat 1.6 | REA .62 | Marb .32 | BMI 425 | CHB 161



CL 1 DOMINO 267K 1 ET

SEMEN \$100
CERTIFICATES \$150

CED 3.9 | BW 2.0 | WW 71 | YW 117 | MM 30
Teat 1.4 | REA .68 | Marb .35 | BMI 393 | CHB 183



CHURCHILL SMOKEY 3128L ET

SEMEN \$50
CERTIFICATES \$100

CED 12.1 | BW -0.5 | WW 75 | YW 112 | MM 40
Teat 1.6 | REA .91 | Marb .51 | BMI 569 | CHB 182



CSC 701 OSHOTO 316

REGULAR & SEXED
AVAILABLE AT AUCTION

CED 3.4 | BW 2.5 | WW 54 | YW 98 | MM 37
Teat 1.2 | REA .40 | Marb -.02 | BMI 360 | CHB 115



STELLPLUG THEN SOME ET

SEMEN AVAILABLE
AT AUCTION

CED 3.6 | BW 2.6 | WW 61 | YW 93 | MM 23
Teat 1.4 | REA .90 | Marb .24 | BMI 456 | CHB 162



BIRDWELL NEW STANDARD 2912 ET

20 STRAWS / \$3500
CERTIFICATES \$100

CED 6.3 | BW 0.7 | WW 66 | YW 97 | MM 31
Teat 1.6 | REA 1.28 | Marb .75 | BMI 555 | CHB 214



CHURCHILL RED THUNDER 133J ET

SEMEN AVAILABLE
THROUGH GENEX

CED 4.7 | BW 1.5 | WW 62 | YW 94 | MM 36
Teat 1.4 | REA 1.04 | Marb .71 | BMI 590 | CHB 191



CHURCHILL RED CLOUD 0376H ET

SEMEN \$100
CERTIFICATES \$75

CED 3.0 | BW 2.6 | WW 71 | YW 108 | MM 31
Teat 1.6 | REA .83 | Marb .46 | BMI 550 | CHB 171

CHURCHILL CATTLE COMPANY

Dale & Nancy Venhuizen
1862 Yadon Rd. Manhattan, MT 59741



"STAMPEDE 486M" LOT 01



"REDWOOD 3408L" LOT 63



SELLING 114 LOTS OF WORLD CLASS HEREFORDS