

WALKER HEREFORDS

Foundations for the Future

BULL SALE



SATURDAY, FEB. 7, 2026 | 12 NOON (CST)

Walker Herefords Sale Facility • Morrison, Tennessee

POWERFUL • PRODUCTIVE • PROMISING

Foundations for the Future

BULL SALE

SATURDAY, FEB. 7, 2026 • 12 NOON (CST)

Lunch served at 11 a.m. and sale begins at 12 (Noon)

SALE DAY PHONES

Eric Walker	931-607-6356
Cody Walker	931-607-0337
Mike Jernigan	615-418-2218
Locke St. John	615-427-8979

SALE STAFF

Josh Jasper, Auctioneer	859-285-8702
Peyton Pruett, AHA Fieldman	731-988-8470
Bobby Singleton	615-708-1034
Carter St. John, Special Assignment	205-705-4041
Tim Dietrich, Special Assignment	859-619-0342
Chris Elliot, Special Assignment	256-856-5481

SALE CATTLE PREPARATION

Jake Mayes	931-304-0722
Will Mayes	931-254-3696

ACKNOWLEDGEMENTS

Creative Services	Catalog
Debbie Hicks	Sale Clerk
Mandy Willis, DVM	Herd Veterinarian
Jessica Cripps, DVM	Veterinarian
Todd Bickett, DVM	Embryologist
Jack Ward, Executive Vice President	AHA
Shane Bedwell, Breed Improvement	AHA
Jim Coley, Director	AHA

TRANSPORTATION

Trucks will be available

SALE MANAGEMENT



Locke St. John
615-427-8979
lockestjohn93@gmail.com

HEREFORDS ON DEMAND

View Foundations for the Future Bull Sale catalog for the most current EPDs:
hereford.org/marketing/hereford-sales/production-catalogs/



TENNESSEE AGRICULTURE ENHANCEMENT PROGRAM

All bulls that qualify for the TAEF maximum cost share reimbursement will be marked on the sale day supplement.



GPS SALE ADDRESS

439 Beacon Light Road
Morrison, Tennessee 37357



DIRECTIONS

From I-24
Take Exit 111. Go east on Hwy. 55 for 12 miles, turn right on Hwy. 287.
Go 1 mile, turn right on Beacon Light Road.



From McMinnville

Take Hwy. 55 West to Morrison. Turn left on Hwy. 287, go 1 mile,
turn right on Beacon Light Road.



ACCOMMODATIONS

All hotels are approximately 20 minutes from the sale location.

Holiday Inn Express

931-728-9383

Manchester

Exit #114 I-24

Hampton Inn

931-728-9528

Manchester

Exit #110 I-24

Comfort Suites

931-728-1301

Manchester

Exit #114 I-24

Hampton Inn

931-473-0009

McMinnville

1560 Sparta St

AIRPORT

Nashville International

Sale is located approximately 1.5 hours from the airport.



LIVE AUCTIONS.TV

Online Bidding Platform

Live audio and live video will allow buyers to bid on animals as if they were present at the sale. Buyers must create an account prior to the sale. Please visit LiveAuctions.tv to create an account. Contact Erick Schmidt at 830-263-0166



Videos available on LiveAuctions.tv after Jan. 25th!

INSURANCE

Insurance is available through Jensen Livestock Agency

Sheila Jensen 785-262-1116

Walker Herefords



WALKERHEREFORDFARM.COM

THE **IW** GENETIC *Difference*


74% IN TOP 30% FOR WEANING WEIGHT


79% IN TOP 30% FOR YEARLING WEIGHT

72% IN TOP 30% FOR MILK

72% IN TOP 20% FOR RIBEYE

69% IN TOP 30% FOR MARBLING

77% IN TOP 30% FOR \$BMI 

77% IN TOP 30% FOR \$CHB 

POWERFUL • PRODUCTIVE • PROMISING



WLKR DRF GUNSMOKE 2702 4306 ET

2

Bull

WLKR DRF GUNSMOKE 2702 4306 ET {DLF,HYF,IEF,MSUDF}

/W P44639573 | Calved: 11/25/24 | Tattoo: LE 4306 | Polled
 JDH AH BENTON 8G ET {CHB}{DLF,HYF,IEF,MSUDF,MDF,DBF}
STELLFLUG GUNSMOKE 222 ET {DLF,HYF,IEF,MSUDF,MDF,DBF}
 P44400396 NJW 202C 4013 HOMEMAKER 90H ET {DLF,HYF,IEF,MSUDF,MDF,DBF}



BR GKB TRENDING 0104 {DLF,HYF,IEF,MSUDF,MDF,DBF}
GKB 0104 MISS BOULDER 2702 {DLF,HYF,IEF,MSUDF,MDF,DBF}
 P44393779 EXR MISS BOULDER 5181 ET {DLF,HYF,IEF,MSUDF,DBP}

ACT. BW
82
 ADJ. WW
NA
 ADJ. YW
1275
 ADJ. REA
13.86
 ADJ. MARB
3.59

CED	BW	WW	YW	DMI	SC	SCF	MILK	M&G	CEM	MCW											
0.7	75%	2.9	55%	80	1%	136	1%	0.7	94%	1.2	30%	14.9	74%	30	30%	71	4%	3.2	30%	166	100%
UDOR	TEAT	CW	MARB	REA	FAT	BMI	BII	CHB													
1.40	9%	1.30	32%	99	3%	0.14	44%	1.17	1%	0.015	33%	387	41%	480	33%	164	7%				

- This is one big-time power bull in the making and a flush-mate brother to Lot 1. This mating came packed full of muscle, substance, and performance — and 4306 represents the stout, big-bodied kind that will have stars beside him on sale day.
- If you like them bold in their build, loaded with red meat, and built for real-world profitability, this one deserves a serious look. For progressive cattlemen wanting to add a power-oriented sire to their bull battery, 4306 is your guy.
- A full sister to this flush was a feature in our 2025 Foundations for the Future Female Sale, commanding \$13,000 to Barnes Herefords in Georgia, reaffirming the value and consistency in this mating.
- Ranks in the top 10% for 7 traits.



GKB 0104 MISS BOULDER 2702 — DAM OF LOTS 1 AND 2



WLKR DRF JH GUNSMOKE G3 4303ET

3

Bull

WLKR DRF JH GUNSMOKE G3 4303ET {DLF,HYF,IEF,MSUDF}

/W P44639571 | Calved: 11/16/24 | Tattoo: LE 4303 | **Homozygous Polled**
 JDH AH BENTON 8G ET (CHB){DLF,HYF,IEF,MSUDF,MDF,DBF}
STELLPLUG GUNSMOKE 222 ET {DLF,HYF,IEF,MSUDF,MDF,DBF}
 P44400396 NJW 202C 4013 HOMEMAKER 90H ET {DLF,HYF,IEF,MSUDF,MDF,DBF}



GERBER ANODYNE 001A (SOD){CHB}{DLF,HYF,IEF,MSUDF}
SPEARHEAD 001/B27 LULU G3 {DLF,HYF,IEF,MSUDF,MDF,DBF}
 P44000354 SPEARHEAD LULU BELLE B27 (DOD){DLF,HYF,IEF,MSUDF,MDF,DBF}

ACT. BW
80
ADJ. WW
NA
ADJ. YW
1194
ADJ. REA
14.17
ADJ. MARB
1.76

CED	BW	WW	YW	DMI	SC	SCF	MILK	M&G	CEM	MCW											
-2.7	93%	3.7	73%	69	8%	129	1%	0.4	76%	1.5	10%	16.0	63%	26	55%	61	26%	0.1	68%	157	100%
UDDR	TEAT	CW	MARB	REA	FAT	BMI	BII	CHB													
1.50	2%	1.50	4%	95	5%	0.14	44%	0.81	8%	0.045	77%	392	37%	479	34%	162	8%				

• Homozygous Polled

- The good Gunsmoke sire group just keeps on coming, and the quality within this set is truly second to none. 4303 is an interesting herd bull prospect we think a great deal of — red-eyed, long-spined, good-footed, and wide-topped with the added muscle and shape you appreciate when you get in behind him. You can drive a lot of miles and not find one built like this.
- His dam, G3, is a heavy-producing Anodyne daughter that continues to make the good ones year after year, and 4303 follows right in her footsteps.
- Ranks in the top 10% for 8 traits.
- **Selling 2/3 interest and full possession.**



SPEARHEAD 001/B27 LULU G3 — DAM OF LOTS 3 AND 4



WLKR DRF JH GUNSMOKE G3 4305ET

4

Bull

WLKR DRF JH GUNSMOKE G3 4305ET {DLF,HYF,IEF,MSUDF}

/W P44639572 | Calved: 11/23/24 | Tattoo: LE 4305 | **Homozygous Polled**
 JDH AH BENTON 8G ET (CHB) {DLF,HYF,IEF,MSUDF,MDF,DBF}
STELLFLUG GUNSMOKE 222 ET {DLF,HYF,IEF,MSUDF,MDF,DBF}
 P44400396 NJW 202C 4013 HOMEMAKER 90H ET {DLF,HYF,IEF,MSUDF,MDF,DBF}



GERBER ANODYNE 001A {SOD}{CHB}{DLF,HYF,IEF,MSUDF}
SPEARHEAD 001/B27 LULU G3 {DLF,HYF,IEF,MSUDF,MDF,DBF}
 P44000354 **SPEARHEAD LULU BELLE B27** {DOD}{DLF,HYF,IEF,MSUDF,MDF,DBF}

ACT. BW 86
 ADJ. WW NA
 ADJ. YW 1215
 ADJ. REA 13.10
 ADJ. MARB 2.39

CED	BW	WW	YW	DMI	SC	SCF	MILK	M&G	CEM	MCW											
-1.3	87%	3.5	69%	69	9%	122	2%	0.4	76%	1.1	40%	13.0	87%	27	55%	61	27%	2.9	33%	136	99%
UDOR	TEAT	CW	MARB	REA	FAT	BMI	BII	CHB													
1.40	9%	1.50	4%	85	15%	0.24	23%	0.75	11%	0.025	47%	341	68%	430	57%	157	10%				

• Homozygous Polled

- Another impressive individual from the Gunsmoke sire group, 4305 offers the kind of balance and correctness that stands out. This bull is super complete in his design — smooth shouldered, sound structured, and naturally easy moving, with the body shape and muscle expression that make him adaptable to a wide range of programs.
- He carries the look of a practical, long-lasting herd bull with extra quality from every angle. His dam continues to transmit performance and consistency, and 4305 follows that pattern well.
- Ranks in the top 10% for 6 traits.

5

Bull

WLKR JH GUNSMOKE 9244 4164M ET {DLF,HYF,IEF,MSUDF}

/W P44639575 | Calved: 11/27/24 | Tattoo: LE 4164 | **Homozygous Polled**
 JDH AH BENTON 8G ET (CHB) {DLF,HYF,IEF,MSUDF,MDF,DBF}
STELLFLUG GUNSMOKE 222 ET {DLF,HYF,IEF,MSUDF,MDF,DBF}
 P44400396 NJW 202C 4013 HOMEMAKER 90H ET {DLF,HYF,IEF,MSUDF,MDF,DBF}



F FINAL TEST 722 (CHB) {DLF,HYF,IEF,MSUDF,MDF,DBF}
WLKR JH ROSE 722 172C 9244 {DLF,HYF,IEF,MSUDF}
 P44122247 CMF 64Z ROSE 172C {DLF,HYF,IEF,MSUDF}

ACT. BW 76
 ADJ. WW NA
 ADJ. YW 1179
 ADJ. REA 14.43
 ADJ. MARB 2.59

CED	BW	WW	YW	DMI	SC	SCF	MILK	M&G	CEM	MCW											
4.6	40%	0.6	13%	59	39%	99	27%	0.7	95%	1.2	30%	26.3	3%	36	7%	66	11%	2.8	35%	98	69%
UDOR	TEAT	CW	MARB	REA	FAT	BMI	BII	CHB													
1.50	2%	1.50	4%	89	10%	0.42	6%	0.67	19%	0.075	96%	527	2%	630	2%	159	9%				

• Homozygous Polled

- 4164 is a high-quality individual that expresses extra length of body, impressive stoutness from end to end, and added shape through his top and rear quarter. What sets this bull apart is the exceptional marbling he offers — ranking in the top 6% for IMF, a rare combination in a bull built this stout.
- Sound structured, big-footed, and correct at the ground, he is one of the true herd bull prospects in this offering. This Gunsmoke son is out of 9233, a powerful donor female that left her mark in Morrison before transitioning into the Morris Herefords program in Texas.
- Ranks in the top 10% for 10 traits.



WLKR JH ROSE 722 172C 9244 — Dam of Lot 5



WLKR JH GUNSMOKE 9244 4164M ET



WLKR DRF GUNSMOKE 9149 4136M

6

Bull

WLKR DRF GUNSMOKE 9149 4136M {DLF,HYF,IEF,MSUDF,MDF,DBF}

/W P44639532 | Calved: 9/21/24 | Tattoo: LE 4136 | **Homozygous Polled**
 JDH AH BENTON 8G ET (CHB) {DLF,HYF,IEF,MSUDF,MDF,DBF}
STELLFLUG GUNSMOKE 222 ET {DLF,HYF,IEF,MSUDF,MDF,DBF}
 P44400396 NJW 202C 4013 HOMEMAKER 90H ET {DLF,HYF,IEF,MSUDF,MDF,DBF}



F FINAL TEST 722 (CHB) {DLF,HYF,IEF,MSUDF,MDF,DBF}

WLKR DRF MARTHA 722 095W 9149G {DLF,HYF,IEF,MSUDF,MDF,DBF}
 P44122124 JWR 120T MIS TARGET 095W {DLF,HYF,IEF}

ACT. BW
77

ADJ. WW
623

ADJ. YW
1084

ADJ. REA
13.64

ADJ. MARB
2.99

CED	BW	WW	YW	DMI	SC	SCF	MILK	M&G	CEM	MCW
4.1 44%	2.4 43%	60 37%	97 33%	0.3 60%	1.0 51%	24.2 6%	35 10%	65 14%	8.5 2%	115 91%
UDOR	TEAT	CW	MARB	REA	FAT	BMI	BII	CHB		
1.40 9%	1.30 32%	87 12%	0.47 4%	0.70 16%	0.035 62%	516 3%	620 3%	175 4%		

• HOMOZYGOUS POLLED

- 4146 is the final Gunsmoke son in this offering, and he certainly isn't short on quality. These Gunsmoke cattle are consistent, practical, and built for the real world, and 4146 follows that pattern well. If you are looking to add pounds to your calf crop and strengthen your bottom line, this is the kind that does it.
- He is backed by a high-quality Final Test daughter that traces to the well-known JWR cow family, bringing maternal strength and longevity to the table.
- Ranks in the top 10% for 7 traits.

7

Bull

GKB FINAL CHAPTER 4692 {DLF,HYF,IEF,MSUDF,MDF,DBF}

/W P44602161 | Calved: 8/13/24 | Tattoo: LE 4692 | **Scurred**
 CRR 719 CATAPULT 109 (SOD) {DLF,HYF,IEF,MDF}
EKS DWK B26 FINAL CHAPTER J10 {DLF,HYF,IEF,MSUDF,MDF,DBF}
 P44294595 EKS DWK 10Y LADYSPORT B26 {DLF,HYF,IEF,MSUDF,MDC}



BR STETSON 4084 ET {DLF,HYF,IEF,MSUDF,MDF,DBF}

GKB 4084 MARIE 0600 ET {DLF,HYF,IEF,MSUDF,MDF,DBF}
 P44190176 ANL P606 MARIE ET 90U {DLF,HYF,IEF,MSUDF,MDF,DBF}

ACT. BW
65

ADJ. WW
638

ADJ. YW
1267

ADJ. REA
13.24

ADJ. MARB
2.48

CED	BW	WW	YW	DMI	SC	SCF	MILK	M&G	CEM	MCW											
-0.5	83%	4.6	87%	55	57%	88	59%	0.1	36%	0.8	72%	16.4	59%	36	7%	64	16%	-3.7	95%	72	17%
UDDR	TEAT	CW	MARB	REA	FAT	BMI	BII	CHB													
1.30	27%	1.30	32%	86	14%	0.22	26%	0.73	13%	-0.005	11%	386	41%	463	40%	154	11%				

- When you talk about a scale-crusher, this is him. A real beef bull with the kind of power and substance you can add to any cow herd. Dark red and good from every angle, this son of Final Chapter speaks for himself. We love the doing ability, added foot size, and extra bone that 4692 expresses.



GKB FINAL CHAPTER 4692



GKB 4084 MARIE 0600 ET - Dam of Lot 7



WLKR JH KATIE 1015 8006 2453ET — Dam of Lot 8



WLKR JH ON DEMAND 2453 4236

8

Bull

WLKR JH ON DEMAND 2453 4236 {DLF,HYF,IEF,MSUDF}

/W P44599380 | Calved: 9/27/24 | Tattoo: LE 4236 | **Scurred**
RV VALOR 9444G ET {CHB}{DLF,HYF,IEF,MSUDF,MDF,DBF}
BAR JZ ON DEMAND {DLF,HYF,IEF,MSUDF,MDF,DBF}
P44355795 BAR JZ HANNAH 087B {DLF,HYF,IEF,MDF}



C GKB GUARDIAN 1015 ET {CHB}{DLF,HYF,IEF,MSUDF,MDF,DBF}
WLKR JH KATIE 1015 8006 2453ET {DLF,HYF,IEF,MSUDF}
P44448283 /S LADY LEADER 8006F {DLF,HYF,IEF,MSUDF}

ACT. BW 78
ADJ. WW 719
ADJ. YW 1322
ADJ. REA 12.99
ADJ. MARB 2.55

CED	BW	WW	YW	DMI	SC	SCF	MILK	M&G	CEM	MCW											
2.7	58%	4.4	84%	84	1%	128	1%	0.8	98%	1.7	4%	25.9	3%	33	15%	75	1%	1.0	57%	121	95%
UDDR	TEAT	CW	MARB	REA	FAT	BMI	BII	CHB													
1.60	1%	1.50	4%	97	4%	0.30	15%	0.62	25%	0.035	62%	529	2%	648	2%	161	8%				

- One of the really good bulls in the offering. Sired by the popular Bar JZ On Demand, 4236 is a long-sided bull that expresses tremendous shape with extra base width. He is absolutely loaded with red meat. His dam is a heavy-producing 2-year-old Guardian daughter we think a great deal of.
- Ranks in the top 10% for 11 traits.

9

Bull

WLKR PMH 2235 2203 4127M {DLF,HYF,IEF,MSUDF,MDF,DBF}

/W P44639523 | Calved: 9/3/24 | Tattoo: LE 4127 | **Homozygous Polled**
INNISFAIL ENERGY 4021 1837 ET {CHB}{DLF,HYF,IEF,MSUDF,MDF}
INNISFAIL 1837 1580 2235 ET {DLF,HYF,IEF,MSUDF,MDF,DBF}
P44434216 STONEGATE 028X 1580 {DOD}{DLF,HYF,IEF,MSUDF,MDF,DBF}



INNISFAIL TRADEMARK 1939 ET {CHB}{DLF,HYF,IEF,MSUDF,MDF,DBF}
INNISFAIL 525C 1939 2203 ET {DLF,HYF,IEF,MSUDF}
P44433948 INNISFAIL 755T 525C {DOD}{DLF,HYF,IEF,MSUDF}

ACT. BW 71
ADJ. WW 584
ADJ. YW 1154
ADJ. REA 12.34
ADJ. MARB 3.64

CED	BW	WW	YW	DMI	SC	SCF	MILK	M&G	CEM	MCW											
-0.1	81%	2.4	43%	84	1%	131	1%	0.4	77%	1.9	2%	23.8	7%	32	23%	74	2%	3.5	27%	137	99%
UDDR	TEAT	CW	MARB	REA	FAT	BMI	BII	CHB													
1.60	1%	1.60	1%	95	5%	0.58	2%	0.72	14%	0.065	92%	527	2%	662	1%	194	1%				

- **Homozygous Polled**
- 4127 is one of the most unique herd bull prospects in the offering. Dark red, heavily pigmented, and built on a big, sturdy foot, he carries extra body, muscle shape, and overall mass. Then you study his EPD profile and it becomes even more impressive—combining big-time growth with elite maternal and carcass value. He ranks in the top 2% for IMF, the top 1% for WW, YW, MG, TEAT, UDDR, \$BII and \$CHB.
- Ranks in the top 10% for 12 traits.



INNISFAIL 1837 1580 2235 ET — Sire of Lot 9



WLKR PMH 2235 2203 4127M



DCF 2446 CUDA BELLE 91M ET

10

Bull

DCF 2446 CUDA BELLE 91M ET

{DLF,HYF,IEF,MSUDF,MDF,DBF}

DCF P44600835 | Calved: 10/8/24 | Tattoo: BE 91M | **Scurred**

C BARRACUDA 0114 ET {CHB}{DLF,HYF,IEF,MSUDF,MDF,DBF}

C CUDA BELLE 2111 {DLF,HYF,IEF,MSUDF,MDF,DBF}

P44359805 C LADY BELL ADVANCE 0053 {DLF,HYF,IEF,MSUDF}



SHF HOUSTON D287 H086 {CHB}{DLF,HYF,IEF,MSUDF,MDF,DBF}

WLKR LF JH ROSE H086 2446 ET {DLF,HYF,IEF,MSUDF,MDF,DBF}

P44447683 WALKER JH ROSE 215Z 4209 799E {OOD}{DLF,HYF,IEF,MDF,DBF}

ACT. BW

76

ADJ. WW

NA

ADJ. YW

NA

ADJ. REA

NA

ADJ. MARB

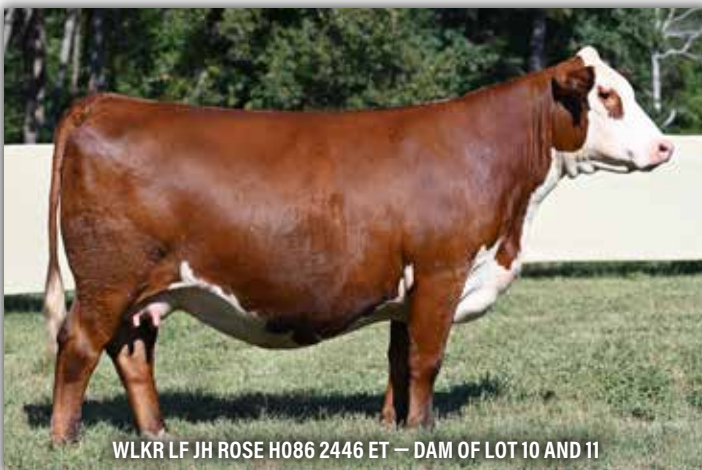
NA

- 91M is a big-boned, stout-hipped, huge-middled Cuda Belle son that carries extra pigment in a dark red package. He is yet another full brother to DCF 4M Red Label 88M ET, the high-selling bull in the Dry Creek Farms Annual Production Sale with a full valuation of \$64,000, selling to MG/4M Farms, Makers Cattle Company, and Triple J Farms. The quality and consistency of this flush were exceptional, and 91M is no exception.

- The dam of this mating is a past high seller in the Walker Herefords Foundations for the Future Female Sale, bringing donor-level quality and maternal power to the pedigree.

- Ranks in the top 10% for 5 traits.

CED	BW	WW	YW	DMI	SC	SCF	MILK	M&G	CEM	MCW
1.4 69%	2.1 37%	72 5%	116 5%	0.3 62%	1.4 15%	19.3 31%	33 15%	69 5%	0.6 62%	124 96%
UDOR	TEAT	CW	MARB	REA	FAT	BMI	BII	CHB		
1.40 9%	1.40 13%	90 9%	0.24 23%	0.54 37%	0.085 98%	430 20%	530 16%	153 12%		



WLKR LF JH ROSE H086 2446 ET — DAM OF LOT 10 AND 11



DCF 4M 2446 RED LABEL 88M ET — FULL BROTHER TO LOT 10



DCF J47 CUDA BELLE 69M



C CUDA BELLE 2111 — SIRE OF LOTS 10, 11 AND 12

11

Bull

DCF 2446 CUDA BELLE 82M ET

{DLF,HYF,IEF,MSUDF,MDF,DBF}

ACT. BW

80

ADJ. WW

NA

ADJ. YW

NA

ADJ. REA

NA

ADJ. MARB

NA

C CUDA BELLE 2111

{DLF,HYF,IEF,MSUDF,MDF,DBF}

P44359805

C LADY BELL ADVANCE 0053

{DLF,HYF,IEF,MSUDF}

SHF HOUSTON D287 H086

{CHB}{DLF,HYF,IEF,MSUDF,MDF,DBF}

WLKR LF JH ROSE H086 2446 ET

{DLF,HYF,IEF,MSUDF,MDF,DBF}

P44447683

WALKER JH ROSE 215Z 4209 799E

{DOD}{DLF,HYF,IEF,MDF,DBF}



CED	BW	WW	YW	DMI	SC	SCF	MILK	M&G	CEM	MCW											
4.6	40%	0.9	16%	67	13%	109	11%	0.3	62%	1.4	15%	23.9	7%	36	6%	70	4%	5.5	11%	111	88%
UDDR	TEAT		CW	MARB	REA	FAT		BMI		BII		CHB									
1.40	9%	1.50	4%	84	17%	0.15	42%	0.52	40%	0.105	100%	482	7%	574	7%	134	30%				

• **Homozygous Polled**

• **Recommended for use on heifers.**

• 82M is a full brother to DCF 4M Red Label 88M ET, the high-selling bull in the Dry Creek Farms Annual Production Sale with a full valuation of \$64,000, selling to MG/4M Farms, Makers Cattle Company, and Triple J Farms. This herd bull prospect carries that same quality and presence and will be a true asset to any program.

• The dam of 82M is a past high seller in the Walker Herefords Foundations for the Future Female Sale, adding donor-level maternal power to this already proven mating. Don't overlook this opportunity.

• Ranks in the top 10% for 8 traits.

12

Bull

DCF J47 CUDA BELLE 69M

{DLF,HYF,IEF,MSUDF,MDF,DBF}

ACT. BW

50

ADJ. WW

NA

ADJ. YW

NA

ADJ. REA

NA

ADJ. MARB

NA

C BARRACUDA 0114 ET

{CHB}{DLF,HYF,IEF,MSUDF,MDF,DBF}

C CUDA BELLE 2111

{DLF,HYF,IEF,MSUDF,MDF,DBF}

P44359805

C LADY BELL ADVANCE 0053

{DLF,HYF,IEF,MSUDF}



CED	BW	WW	YW	DMI	SC	SCF	MILK	M&G	CEM	MCW											
15.9	1%	-1.6	3%	53	66%	79	81%	0.0	18%	1.0	51%	20.2	24%	45	1%	71	3%	11.1	1%	76	23%
UDDR	TEAT			CW		MARB		REA		FAT		BMI		BII		CHB					
1.30	27%	1.40	13%	70	59%	0.27	18%	0.45	53%	0.065	92%	424	22%	507	22%	132	32%				

• **Homozygous Polled**

• **Recommended for use on heifers.**

• 69M is the elite calving-ease bull of the offering, combining added pigment and a dark red color pattern in a smooth, attractive package. He is sired by C Cuda Belle 2111, a bull known for providing an outcross pedigree while maintaining strong phenotype and pigmentation. This big time herd bull prospect stems to many of the breed greats. Ranks in the top 1% for CED, MM, and MCE.

• Ranks in the top 10% for 5 traits.



DBF 0865 JELLY ROLL 5M



UPS MISS 7616 SENSATION 0865 — Dam of Lot 13

13

Bull

DBF 0865 JELLY ROLL 5M (DLF,HYF,IEF,MSUDF)

DCF P44607960 | Calved: 9/24/24 | Tattoo: BE 5M | **Homozygous Polled**
 LOEWEN GENESIS G16 ET (CHB) (DLF,HYF,IEF,MDF,DBF)
LOEWEN DCF DEFIANCE H49 ET (CHB) (DLF,HYF,IEF,MSUDF,MDF,DBF)
 P44205419 LOEWEN MISS 994W 6X 7C (DLF,HYF,IEF,DBP)



UPS 2504 SENSATION 7616 (DLF,HYF,IEF,MSUDF,MDF,DBF)
UPS MISS 7616 SENSATION 0865 (DLF,HYF,IEF,MSUDF,MDF,DBF)
 P44305364 UPS MISS SUMMIT 8757

ACT. BW
65
ADJ. WW
NA
ADJ. YW
NA
ADJ. REA
NA
ADJ. MARB
NA

CED	BW	WW	YW	DMI	SC	SCF	MILK	M&G	CEM	MCW											
6.8	22%	2.0	34%	59	41%	103	20%	0.0	24%	0.9	62%	20.7	21%	30	30%	60	32%	1.5	51%	97	66%
UDOR	TEAT			CW	MARB	REA	FAT	BMI		BII		CHB									
1.40	9%	1.50	4%	82	22%	0.22	26%	0.41	60%	0.105	100%	438	17%	525	17%	145	17%				

- **Homozygous Polled**
- **Recommended for use on heifers.**

• A standout from birth, Jelly Roll is unique in many ways. His pedigree is as hot as they come — sired by Loewen Defiance, the sire of one of the most popular bulls in the country, Loewen Sandhills. He is backed by a beautiful Sensation 7616 daughter that originated at Upstream Ranch in Nebraska, adding depth, maternal strength, and proven production to the equation. Study this high-quality individual and the power of his pedigree. Don't miss Jelly Roll.

- Ranks in the top 10% for 2 traits

14

Bull

DCF 54K BARRACUDA 60M (DLF,HYF,IEF,MSUDF,MDF,DBF)

DCF P44604153 | Calved: 9/22/24 | Tattoo: BE 60M | **Homozygous Polled**
 BEHM 100W CUDA 504C (SOD) (CHB) (DLF,HYF,IEF,MSUDF,MDF,DBF)
C BARRACUDA 0114 ET (CHB) (DLF,HYF,IEF,MSUDF,MDF,DBF)
 P44122941 C 105Y LADY DOMINO 4038 (DLF,HYF,IEF)



LOEWEN GENESIS G16 ET (CHB) (DLF,HYF,IEF,MDF,DBF)
DCF G3 LULU 54K ET (DLF,HYF,IEF,MSUDF)
 P44412215 SPEARHEAD 001/B27 LULU G3 (DLF,HYF,IEF,MSUDF,MDF,DBF)

ACT. BW
62
ADJ. WW
NA
ADJ. YW
NA
ADJ. REA
NA
ADJ. MARB
NA

CED	BW	WW	YW	DMI	SC	SCF	MILK	M&G	CEM	MCW											
7.4	19%	-0.5	6%	56	52%	93	44%	0.5	79%	1.4	15%	16.3	60%	37	5%	66	11%	2.7	36%	60	7%
UDOR	TEAT	CW	MARB	REA	FAT	BMI	BII	CHB													
1.40	9%	1.50	4%	61	84%	0.30	15%	0.32	75%	-0.005	11%	346	65%	431	57%	122	48%				

- **Homozygous Polled**
- **Recommended for use on heifers.**

- 60M is a super-balanced, stout-made, big-footed son of C Barracuda. This herd bull prospect excels in added color, performance, and calving ease, making him an easy choice come sale day.
- His dam, 54K, has already been flushed in our program and raised this herd bull prospect as a 2-year-old, further proving her value and productivity.
- Ranks in the top 10% for 5 traits.



DCF 54K BARRACUDA 60M



DCF G3 LULU 54K ET — Dam of Lot 14



WALKER TORI R104 757E 0133H — Dam of Lot 15



WLKR RJB EXPLORER 0133 4126M

15

Bull

WLKR RJB EXPLORER 0133 4126M (DLF,HYF,IEF,MSUDF,MDF,DBF)

/W P44635171 | Calved: 9/2/24 | Tattoo: LE 4126 | **Homozygous Polled**
 SR EXPEDITION 619G ET (DLF,HYF,IEF,MSUDF)
DVOR 619G 933 EXPLORER 110J (DLF,HYF,IEF,MSUDF,MDF,DBF)
 P44250167 DVOR 5135 174E LADY FRNTR 933G (DLF,HYF,IEF,MSUDF)



MEAD 755T VICTOR R104 (DLF,HYF,IEF,DBP)
WALKER TORI R104 757E 0133H (DLF,HYF,IEF,MSUDF,MDF,DBF)
 P44241103 WLKR TORI 3304 1330 757E ET (DLF,HYF,IEF,MSUDF,MDC)

ACT. BW

78

ADJ. WW

582

ADJ. YW

1255

ADJ. REA

14.82

ADJ. MARB

2.75

CED	BW	WW	YW	DMI	SC	SCF	MILK	M&G	CEM	MCW											
-0.7	84%	2.4	43%	66	14%	112	7%	0.3	63%	1.7	4%	19.7	28%	31	24%	64	14%	-0.7	77%	114	91%
UDOR	TEAT	CW	MARB	REA	FAT	BMI	BII	CHB													
1.40	9%	1.40	13%	68	66%	0.15	42%	0.33	74%	0.055	85%	403	32%	492	28%	117	57%				

• Homozygous Polled

- 4126 is one of the favorites around the /W, and for good reason. This bull is a very intriguing individual that we feel truly puts it all together — added color, impressive length of body, depth through the middle, and the kind of muscle shape that stands out in this offering.
- He is backed by a top-end producer supported by generations of elite genetics, giving 4126 the kind of foundation that ensures longevity, consistency, and real-world performance.
- Ranks in the top 10% for 3 traits.

16

Bull

WALKER EXPLORER 298K 4138M (DLF,HYF,IEF,MSUDF)

/W P44639551 | Calved: 9/25/24 | Tattoo: LE 4138 | **Homozygous Polled**
 SR EXPEDITION 619G ET (DLF,HYF,IEF,MSUDF)
DVOR 619G 933 EXPLORER 110J (DLF,HYF,IEF,MSUDF,MDF,DBF)
 P44250167 DVOR 5135 174E LADY FRNTR 933G (DLF,HYF,IEF,MSUDF)



JDH AH BENTON 8G ET (CHB)(DLF,HYF,IEF,MSUDF,MDF,DBF)
WLKR JM BETH 8G 333 298K ET (DLF,HYF,IEF,MSUDF,MDF,DBF)
 P44340610 WALKER LASS X51 Y479 333 (DLF,HYF,IEF,MSUDF)

ACT. BW

74

ADJ. WW

637

ADJ. YW

1170

ADJ. REA

13.96

ADJ. MARB

2.95

CED	BW	WW	YW	DMI	SC	SCF	MILK	M&G	CEM	MCW											
3.9	46%	0.9	16%	68	10%	110	9%	0.4	77%	1.1	40%	27.1	2%	30	33%	64	16%	0.7	61%	113	90%
UDDR	TEAT		CW	MARB	REA	FAT	BMI		BII	CHB											
1.50	2%	1.50	4%	101	2%	0.53	3%	0.89	4%	0.085	98%	572	1%	691	1%	194	1%				

• Homozygous Polled

- 4138 is a scale-crushing herd bull prospect sired by our walking herd bull, Explorer. If you're looking for a stout, power-oriented sire that will add pounds to your calf crop for many years, this one deserves your attention. He offers impressive length of body, added muscle, extra rib, and the kind of bone and structure that hold up in real-world conditions.
- 4138 is the natural calf out of 298K, a direct daughter of the Carcass Queen that entered our donor program this year. Study the growth, maternal value, and carcass merit this bull brings — he has the ability to move a program forward in multiple directions.
- Ranks in the top 10% for 11 traits.



WLKR JM BETH 8G 333 298K ET — Dam of Lot 16



WALKER EXPLORER 298K 4138M



WLKR JH MERIT 1506 4248

17

Bull

WLKR JH MERIT 1506 4248 {DLF,HYF,IEF,MSUDF}

/W P44654313 | Calved: 11/20/24 | Tattoo: LE 4248 | **Homozygous Polled**
 JW X651 TESTED 1857 ET (CHB) {DLF,HYF,IEF,MSUDF,MDF}
 JW 1857 MERIT 21134 {CHB} {DLF,HYF,IEF,MSUDF,MDF,DBF}
 P44212986 JW 33Z VICTORIA 19027 {DLF,HYF,IEF,MSUDF}



DM ALL AROUND 904G ET {DLF,HYF,IEF,MSUDF,MDF}
WLKR SR JH ROSE 904G 1506 ET {DLF,HYF,IEF,MSUDF,MDF}
 P44320565 CMF 64Z ROSE 172C {DLF,HYF,IEF,MSUDF}

ACT. BW 77
 ADJ. WW 768
 ADJ. YW 1332
 ADJ. REA 13.61
 ADJ. MARB 2.48

CED	BW	WW	YW	DMI	SC	SCF	MILK	M&G	CEM	MCW
5.0 36%	1.5 25%	82 1%	124 2%	0.8 98%	1.1 40%	18.9 35%	38 4%	79 1%	4.8 15%	118 94%
UDR	TEAT	CW	MARB	REA	FAT	BMI	BII	CHB		
1.50 2%	1.60 1%	123 1%	0.33 12%	1.07 1%	0.025 47%	465 10%	576 7%	201 1%		

• Homozygous Polled

- 4248 is a true meat wagon and an easy-doing kind of herd bull prospect. This direct son of the ever-popular AI sire Merit is big-boned, bold in his muscle shape, and loaded with body and capacity. Study his EPD profile and you'll see he rises to the top of the breed in multiple categories. He ranks in the top 1% for WW, MG, UDDR, TEAT, CW, REA, and CHB.
- Ranks in the top 10% for 11 traits.

18

Bull

WLKR JH DCF REACHER 937J 4115M {DLF,HYF,IEF,MSUDF}

/W DCF 44639526 | Calved: 8/20/24 | Tattoo: LE 4115 | **Horned**
 BIRDWELL VANGUARD 5022 9337 (CHB) {DLF,HYF,IEF,MSUDF,MDF,DBF}
WHITEHAWK 593F REACHER 660J ET (CHB) {DLF,HYF,IEF,MSUDF,MDF}
 P44215040 WHR 845C 4010 BEEFMAID 593F ET {DLF,HYF,IEF,MSUDF}



JDH AH BENTON 8G ET (CHB) {DLF,HYF,IEF,MSUDF,MDF,DBF}
WHR 8G 809F BEEFMAID 937JET {DLF,HYF,IEF,MSUDF}
 P44295911 INNISFAIL 4013 809F {DLF,HYF,IEF,MSUDF,MDF,DBF}

ACT. BW 68
 ADJ. WW 600
 ADJ. YW 1092
 ADJ. REA 15.67
 ADJ. MARB 4.06

CED	BW	WW	YW	DMI	SC	SCF	MILK	M&G	CEM	MCW											
1.2	71%	2.0	34%	70	7%	109	10%	0.3	58%	1.4	15%	22.0	13%	37	5%	72	2%	3.9	23%	96	64%
UDDR	TEAT	CW	MARB	REA	FAT	BMI	BII	CHB													
1.40	9%	1.30	32%	93	6%	0.61	2%	1.21	1%	0.015	33%	512	3%	631	2%	204	1%				

- 4115 is a bull that pairs eye-catching phenotype with an EPD profile that is second to none. The horned division in this offering may be small, but the quality runs deep, and 4115 rises to the top quickly.
- Sired by the carcass leader Reacher, he is out of our Benton donor 937J — a drop-dead gorgeous female whose look, power, and production set a high standard in our program.
- Ranks in the top 1% for REA and \$CHB.



WLKR JH DCF REACHER 937J 4115M



WHR 8G 809F BEEFMAID 937JET — Dam of Lot 18



DCF SFCC MR DELUXE 78M

19

Bull

DCF SFCC MR DELUXE 78M {DLF,HYF,IEF,MSUDF,MDF,DBF}

DCF P44600154 | Calved: 10/2/24 | Tattoo: BE 78M | Scurred
H B DISTINCT (CHB){DLF,HYF,IEF,MSUDF,MDF,DBF}
HUTH CLC WF DELUXE K016 {DLF,HYF,IEF,MSUDF,MDF,DBF}
P44370488 HUTH F035 MANDY H029 {DLF,HYF,IEF,MSUDF,MDF}
UPS MIGHTY 7850 ET {DLF,HYF,IEF,MSUDF,MDF}
CLC 7850 MARIAH 0103 110K ET {DLF,HYF,IEF,MSUDF}
44448433 H W4 MARIAH 0103 ET {DLF,HYF,IEF,MSUDF,MDF}



CED	BW	WW	YW	DMI	SC	SCF	MILK	M&G	CEM	MCW
8.5 13%	1.5 25%	66 14%	111 9%	0.9 99%	1.9 2%	28.7 1%	37 5%	71 4%	-0.5 75%	101 74%
UDDR	TEAT	CW	MARB	REA	FAT	BMI	BII	CHB		
1.50 2%	1.50 4%	86 15%	0.04 73%	0.71 15%	0.045 77%	538 2%	624 3%	121 50%		

• Recommended for use on heifers.

- 78M is a well-balanced, long-made Deluxe son that displays added pigmentation, adequate foot size, and plenty of bone. He is a high-quality herd sire prospect that traces back to highly productive dams throughout his pedigree and several of the breed's most proven, high-powered sires. Ranks in the top 1% for SCF and \$BMI.
- Ranks in the top 10% for 9 traits.

20

Bull

WLKR SSF 7R18 DELUXE 590 {DLF,HYF,IEF,MSUDF,MDF,DBF}

/W P44609068 | Calved: 9/17/24 | Tattoo: LE J590 | **Homozygous Polled**
H B DISTINCT (CHB){DLF,HYF,IEF,MSUDF,MDF,DBF}
HUTH CLC WF DELUXE K016 {DLF,HYF,IEF,MSUDF,MDF,DBF}
P44370488 HUTH F035 MANDY H029 {DLF,HYF,IEF,MSUDF,MDF}
MSU TCF REVOLUTION 4R (SOD){DLF,HYF,IEF,MDF,DBF}
RKH SMITH EXCITING 4R14 7R18 (DOD){DLF,HYF,IEF,MSUDF,DBF}
P43848975 RKH SMITH EXCITING 1G22 4R14



CED	BW	WW	YW	DMI	SC	SCF	MILK	M&G	CEM	MCW
7.9 16%	2.1 37%	84 1%	129 1%	0.9 99%	2.0 1%	20.8 20%	27 49%	69 5%	-0.9 79%	120 95%
UDDR	TEAT	CW	MARB	REA	FAT	BMI	BII	CHB		
1.60 1%	1.60 1%	101 2%	0.27 18%	0.94 3%	0.075 96%	458 11%	570 8%	162 8%		

• Homozygous Polled

• Recommended for use on heifers.

- A direct son of the AI sire Deluxe, 590 offers a combination of numbers and phenotype that is hard to match. He is loaded with growth, maternal strength, and carcass value, making him a versatile herd bull option for a wide range of programs.
- He ranks in the top 1% for WW, YW, SC, UDDR, and TEAT, highlighting his ability to transmit performance, fertility, and udder quality at the highest levels.
- Ranks in the top 10% for 10 traits.



UPS MISS ENDURE 8076 — DAM OF LOT 21

21

Bull

DBF 8076 TITAN 8M ET {DLF,HYF,IEF,MSUDF}

DCF P44615844 | Calved: 9/25/24 | Tattoo: BE 8M | **Homozygous Polled**
CHURCHILL BROADWAY 858F (CHB){DLF,HYF,IEF,MSUDF,MDF,DBF}
BIRDWELL BULLNANZA 7098 0552ET (CHB){DLF,HYF,IEF,MSUDF,MDF}
P44254853 BR VALIDATED 8413 6035 7098 {DLF,HYF,IEF,MDF,DBF}
NJW 79Z Z311 ENDURE 173D ET (SOD){CHB}{DLF,HYF,IEF,MSUDF,MDF,DBF}
UPS MISS ENDURE 8076 {DLF,HYF,IEF,MSUDF}
P43920304 UPS MISS SENSATION 4096 (DOD)



CED	BW	WW	YW	DMI	SC	SCF	MILK	M&G	CEM	MCW											
8.1	15%	3.0	58%	63	25%	99	28%	0.3	55%	0.8	72%	27.6	2%	37	6%	68	6%	8.9	2%	100	72%
UDDR	TEAT	CW	MARB	REA	FAT	BMI	BII	CHB													
1.30	27%	1.20	59%	84	17%	0.57	2%	0.94	3%	0.035	62%	574	1%	688	1%	185	2%				

• Recommended for use on heifers

• Homozygous Polled

- 8M is a dark red Bullnanza son that offers true calving ease without sacrificing maternal strength or carcass value. He is backed by a powerful Endure donor whose maternal consistency and production record add even more credibility to this young sire's future.
- Ranks in the top 10% for 9 traits.



WALKER BALANCE 0112H 4132M



WALKER DOMINETTE B296 0112H — Dam of Lot 22

22

Bull

WALKER BALANCE 0112H 4132M (DLF,HYF,IEF,MSUDF,MDF,DBF)

/W P44639529 | Calved: 9/14/24 | Tattoo: LE 4132 | Polled
/S MANDATE 66589 ET (SOD)(DLF,HYF,IEF,MSUDF,MDF,DBF)
CRR 66589 BALANCE 107 (DLF,HYF,IEF,MSUDF,MDF,DBF)
P44296384 CRR 8Y ECLIPSE 9102 (DLF,HYF,IEF,MSUDF,MDC)



FF BATTLE PLATO Y549 B296 (DLF,HYF,IEF,MSUDF)

WALKER DOMINETTE B296 0112H (DLF,HYF,IEF,MSUDF)
P44246438 WALKER DOMINETTE 332 797E (DLF,HYF,IEF)

ACT. BW

74

ADJ. WW

546

ADJ. YW

1062

ADJ. REA

14.29

ADJ. MARB

2.71

CED	BW	WW	YW	DMI	SC	SCF	MILK	M&G	CEM	MCW											
7.8	17%	-0.4	6%	62	28%	89	55%	0.5	78%	0.8	72%	31.8	1%	36	7%	67	8%	-1.3	82%	94	60%
UDOR	TEAT	CW	MARB	REA	FAT	BMI	BII	CHB													
1.20	56%	1.30	32%	76	38%	0.11	53%	0.35	71%	0.065	92%	575	1%	665	1%	110	69%				

• Recommended for use on heifers.

- 4132 is a well-balanced son of the popular calving-ease sire CRR Balance. He is correct in his structure, with added length, depth of body, and the kind of smooth design that translates into real-world functionality. This is the type of herd bull that will consistently produce the front-pasture females you'll want to keep. Ranks in the top 1% for SCF, \$BMI, and \$BII.
- Ranks in the top 10% for 6 traits.

23

Bull

DCF 1585 FINAL PRINT 75M (DLF,HYF,IEF,MSUDF)

DCF P44600159 | Calved: 10/1/24 | Tattoo: BE 75M | Polled
BOYD 31Z BLUEPRINT 6153 (SOD)(DLF,HYF,IEF,MSUDF,MDF,DBF)
RST FINAL PRINT 0016 (CHB)(DLF,HYF,IEF,MSUDF,MDF,DBF)
P44178105 RST MS X651 TESTED 8032 (DLF,HYF,IEF,MSUDF,MDF,DBF)



NJW 79Z Z311 ENDURE 173D ET (SOD)(CHB)(DLF,HYF,IEF,MSUDF,MDF,DBF)

UPS MISS ENDURE 1585 (DLF,HYF,IEF,MSUDF,MDF,DBF)
P44296507 UPS MISS HOMETOWN 6917 (MDP,DBP)

ACT. BW

76

ADJ. WW

NA

ADJ. YW

NA

ADJ. REA

NA

ADJ. MARB

NA

CED	BW	WW	YW	DMI	SC	SCF	MILK	M&G	CEM	MCW											
10.9	6%	1.3	22%	71	6%	101	23%	0.4	73%	1.2	30%	25.2	4%	35	9%	71	3%	4.3	19%	64	9%
UDOR	TEAT	CW	MARB	REA	FAT	BMI	BII	CHB													
1.40	9%	1.50	4%	97	4%	0.22	26%	0.80	8%	0.035	62%	518	3%	617	3%	158	9%				

• Recommended for use on heifers.

- 75M is a true sleep-all-night calving-ease bull that offers an impressive combination of calving ease, growth, elite maternal value, and carcass strength. He ranks in the top 10% for all three Hereford indexes, making him a versatile and profitable option for progressive cattlemen.
- A direct son of RST Final Print, 75M blends pedigree, phenotype, genotype, and an exceptional EPD profile into one complete package. Don't miss this opportunity.
- Ranks in the top 10% for 13 traits.



DCF 1585 FINAL PRINT 75M



24

DBF 9181 2M ET {DLF,HYF,IEF,MSUDF}

Bull

DCF P44615839 | Calved: 9/9/24 | Tattoo: BE 2M | **Scurred**
T/R BPF AMERICANCLASSIC 561CET {DLF,HYF,IEF,MDF,DBF}
T/R GKB AC RED KINGDOM J16 {DLF,HYF,IEF,MSUDF,MDF,DBF}
P44282636 BR CELESTE 6624 ET {DLF,HYF,IEF,MSUDF}



NJW 79Z Z311 ENDURE 173D ET {SOD}{CHB}{DLF,HYF,IEF,MSUDF,MDF,DBF}
UPS MISS ENDURE 9181 {DLF,HYF,IEF,MSUDF}
P44051150 UPS MISS NAVARRO 1028 {IEP}

CED	BW	WW	YW	DMI	SC	SCF	MILK	M&G	CEM	MCW
-2.2 91%	6.3 98%	74 3%	116 5%	0.6 90%	0.9 62%	18.3 40%	31 28%	68 7%	-1.7 85%	117 93%
UDOR	TEAT	CW	MARB	REA	FAT	BMI	BII	CHB		
1.10 83%	0.80 100%	94 5%	-0.03 89%	0.89 4%	0.005 20%	407 30%	487 30%	133 31%		

- 2M is a powerful, well-balanced son of the popular Red Kingdom. If you want a bull that is sound on the move with an attractive front third, this one will get your attention. His powerful dam consistently transmits strong maternal traits with added performance and growth, while stacking extra ribeye and carcass weight into the package.

- Ranks in the top 10% for 5 traits.

25

DBF 9181 13M {DLF,HYF,IEF,MSUDF}

Bull

DCF P44624549 | Calved: 12/5/24 | Tattoo: BE 13M | **Polled**
LOEWEN GENESIS G16 ET {CHB}{DLF,HYF,IEF,MDF,DBF}
DCF G16/G16 GENESIS 47K ET {CHB}{DLF,HYF,IEF,MSUDF}
P44405465 SPEARHEAD B413 HADLEY G16 {DLF,HYF,IEF,MSUDF,MDF,DBF}



NJW 79Z Z311 ENDURE 173D ET {SOD}{CHB}{DLF,HYF,IEF,MSUDF,MDF,DBF}
UPS MISS ENDURE 9181 {DLF,HYF,IEF,MSUDF}
P44051150 UPS MISS NAVARRO 1028 {IEP}

CED	BW	WW	YW	DMI	SC	SCF	MILK	M&G	CEM	MCW											
3.1	54%	4.6	87%	68	10%	119	3%	0.6	90%	1.7	4%	25.4	4%	39	3%	73	2%	4.2	20%	96	65%
UDOR	TEAT		CW	MARB		REA	FAT		BMI		BII		CHB								
1.40	9%	1.40	13%	106	1%	0.33	12%	1.06	1%	0.025	47%	547	1%	649	2%	191	2%				

- This natural calf out of the 9181 donor is a true testament to what these high-powered performance cattle can do. One of the youngest bulls in the offering, he brings the pedigree and data together in a way that pushes numerous traits into the upper echelon of the breed. He is built for producers focused on adding value and improving the bottom line.

- Ranks in the top 10% for 12 traits.





WLKR JH NEW STANDARD 236K 4215

26

Bull

WLKR JH NEW STANDARD 236K 4215 {DLF,HYF,IEF,MSUDF}

/W P44535718 | Calved: 1/20/24 | Tattoo: LE 4215 | Polled
 KCF BENNETT RESOLVE G595 {CHB}{DLF,HYF,IEF,MSUDF,MDF,DBF}
BIRDWELL NEW STANDARD 2912 ET {CHB}{DLF,HYF,IEF,MSUDF,MDF,DBF}
 P44358760 BR VALIDATED B413 6035 7098 {DLF,HYF,IEF,MDF,DBF}



TH MASTERPLAN 183F {CHB}{DLF,HYF,IEF,MSUDF,MDF,DBF}
CHURCHILL LADY 236K {DLF,HYF,IEF,MSUDF,MDF,DBF}
 P44378134 CHURCHILL LADY 945G

CED	BW	WW	YW	DMI	SC	SCF	MILK	M&G	CEM	MCW
9.1 11%	1.8 30%	71 6%	106 15%	0.9 99%	1.7 4%	26.5 2%	38 4%	73 2%	3.5 27%	66 11%
UDOR	TEAT	CW	MARB	REA	FAT	BMI	BII	CHB		
1.50 2%	1.50 4%	86 14%	0.62 2%	0.99 2%	0.055 85%	540 2%	665 1%	173 4%		

ACT. BW
74
 ADJ. WW
725
 ADJ. YW
1191
 ADJ. REA
14.94
 ADJ. MARB
2.79

- Recommended for use on heifers.
- **Homozygous Polled**
- Kicking off the 2-year-old division is a special feature that brings cutting-edge genetics stemming directly from the Churchill program. 4215 is a true sleep-all-night calving-ease herd bull loaded with quality. Sired by the ever-popular New Standard, this young stud is long-bodied with extra muscle shape, balance, and eye appeal. If you want the total package of calving ease, growth, maternal value, and carcass merit, here he is.
- Ranks in the top 10% for 12 traits.



CHURCHILL LADY 236K — DAM OF LOT 26



BIRDWELL NEW STANDARD 2912 ET — SIRE OF LOT 26



WALKER BELLE 722 882F 144J — Dam of Lot 27



WALKER GUARDIAN 144J 425M ET

27

Bull

WALKER GUARDIAN 144J 425M ET {DLF,HYF,IEF,MSUDF,MDF,DBF}

/W P44550890 | Calved: 1/31/24 | Tattoo: LE 425 | Polled
 LOEWEN GENESIS G16 ET (CHB) {DLF,HYF,IEF,MDF,DBF}
C GKB GUARDIAN 1015 ET (CHB) {DLF,HYF,IEF,MSUDF,MDF,DBF}
 P44257548 C CJC BELLE AIR LASS 8037 ET (DLF,HYF,IEF,MSUDF,MDF,DBF)



F FINAL TEST 722 (CHB) {DLF,HYF,IEF,MSUDF,MDF,DBF}

WALKER BELLE 722 882F 144J (DLF,HYF,IEF,MSUDF,MDF,DBF)
 P44255014 **WALKER BELLE 332 526C 882F** (DLF,HYF,IEF,DBP)

ACT. BW 75
 ADJ. WW NA
 ADJ. YW 1182
 ADJ. REA 13.21
 ADJ. MARB 3.86

CED	BW	WW	YW	DMI	SC	SCF	MILK	M&G	CEM	MCW											
-3.6	95%	5.5	95%	85	1%	132	1%	0.4	69%	1.9	2%	22.1	13%	33	18%	75	1%	-1.1	80%	133	99%
UDOR	TEAT	CW	MARB	REA	FAT	BMI	CHB														
1.50	2%	1.40	13%	100	3%	0.70	1%	0.69	17%	0.045	77%	517	3%	660	1%	215	1%				

• **Homozygous Polled**

- A real highlight of the sale, this Guardian son exhibits extreme muscle expression and an impressive look from every angle. A true power bull built to add pounds and performance to any calf crop. 425M is loaded with pigment and carries all the bells and whistles the real cowboys appreciate. Did I mention his explosive 215 \$CHB that ranks in the top 1%?
- Ranks in the top 10% for 10 traits.

28

Bull

WALKER ARLO 766E 444M ET {DLF,HYF,IEF,MSUDF}

/W P44551560 | Calved: 2/7/24 | Tattoo: LE 444 | Polled
 LOEWEN GENESIS G16 ET (CHB) {DLF,HYF,IEF,MDF,DBF}
C ARLO 2135 ET (CHB) {DLF,HYF,IEF,MSUDF,MDF,DBF}
 P44359827 C 88X NOTICE ME 1311 ET (DLF,HYF,IEF,MDF,DBF)



GV CMR X151 MR 847 Z210 {SOD} {DLF,HYF,IEF,MDF}

WLKR JM BETH Z210 333 766E ET (DLF,HYF,IEF,MSUDF)
 P43797534 **WALKER LASS X51 Y479 333** (DLF,HYF,IEF,MSUDF)

ACT. BW 80
 ADJ. WW NA
 ADJ. YW 1125
 ADJ. REA 14.21
 ADJ. MARB 1.88

CED	BW	WW	YW	DMI	SC	SCF	MILK	M&G	CEM	MCW											
1.8	66%	4.1	80%	60	37%	100	26%	0.1	35%	1.2	30%	18.1	42%	24	70%	54	60%	-2.5	90%	66	10%
UDOR	TEAT		CW	MARB		REA		FAT		BMI		BII		CHB							
1.50	2%	1.50	4%	86	15%	0.42	6%	0.35	71%	0.105	100%	405	31%	505	23%	163	7%				

• **Homozygous Polled**

- An attractive-made, square-hipped son of the breed-wide standout Arlo. Backed by generations of the Carcass Queen cow line that continues to generate the good ones year after year. Love the added maternal value and marbling expression 444M brings to the table.
- Ranks in the top 10% for 5 traits.



WLKR JM BETH Z210 333 766E ET — Dam of Lot 28



WALKER ARLO 766E 444M ET



WLKR LF EXPLORER 728 465M

29

Bull

WLKR LF EXPLORER 728 465M {DLF,HYF,IEF,MSUDF}

/W 44550905 | Calved: 2/20/24 | Tattoo: LE 465 | **Horned**

SR EXPEDITION 619G ET {DLF,HYF,IEF,MSUDF}

DVOR 619G 933 EXPLORER 110J {DLF,HYF,IEF,MSUDF,MDF,DBF}

P44250167 DVOR 5135 174E LADY FRNTR 933G {DLF,HYF,IEF,MSUDF}



ILR HOMEGROWN 458B ET {DLF,HYF,IEF,MSUDF,MDF}

6MC HOMEGROWN LADY 728 {DLF,HYF,IEF,MSUDF,MDF}

P43812351 /S LADY DOMINO 2013Z {IEP}

ACT. BW

77

ADJ. WW

638

ADJ. YW

1102

ADJ. REA

13.37

ADJ. MARB

2.86

CED	BW	WW	YW	DMI	SC	SCF	MILK	M&G	CEM	MCW											
5.4	33%	1.6	27%	69	9%	118	4%	0.8	97%	1.9	2%	26.3	3%	37	5%	72	3%	2.8	35%	85	40%
UDDR	TEAT			CW		MARB		REA		FAT		BMI		BII		CHB					
1.40	9%	1.50	4%	90	9%	0.17	37%	0.55	35%	0.085	98%	510	3%	607	4%	138	25%				

• Recommended for use on heifers.

• 465M is one of the only horned bulls in the offering, and he brings power, consistency, and overall quality that is second to none. Sired by Explorer, one of the high-quality herd sires walking the pastures at the /W, this bull puts together an impressive numeric profile that deserves a close study.

• Ranks in the top 10% for 11 traits.



6MC HOMEGROWN LADY 728 — DAM OF LOTS 29, 30 AND 31

30

Bull

WLKR LF CHARACTER 728 M45 ET {DLF,HYF,IEF,MSUDF}

/W P44606970 | Calved: 2/6/24 | Tattoo: LE M45 | **Polled**

NJW 79Z Z311 ENDURE 173D ET {SOD}{CHB}{DLF,HYF,IEF,MSUDF,MDF,DBF}

NJW 11B 173D CHARACTER 178J ET {CHB}{DLF,HYF,IEF,MSUDF,MDF}

P44272817 NJW 79Z 10W RITA 11B {DLF,HYF,IEF,MSUDF,MDF}



ILR HOMEGROWN 458B ET {DLF,HYF,IEF,MSUDF,MDF}

6MC HOMEGROWN LADY 728 {DLF,HYF,IEF,MSUDF,MDF}

P43812351 /S LADY DOMINO 2013Z {IEP}

ACT. BW

75

ADJ. WW

NA

ADJ. YW

894

ADJ. REA

12.57

ADJ. MARB

1.36

CED	BW	WW	YW	DMI	SC	SCF	MILK	M&G	CEM	MCW											
5.4	33%	2.7	50%	77	2%	120	3%	0.7	95%	2.0	1%	30.8	1%	35	9%	74	2%	2.5	38%	69	14%
UDOR	TEAT	CW	MARB	REA	FAT	BMI	BII	CHB													
1.20	56%	1.20	59%	94	5%	0.13	47%	0.75	11%	0.025	47%	588	1%	691	1%	146	17%				

• Recommended for use on heifers.

• M45 is a dark red son of the \$135,000 popular AI sire NJW Character. Backed by a proven donor cow in the program, he brings multiple high-quality attributes to the forefront including growth, maternal value, and loads of carcass merit.

• Ranks in the top 10% for 9 traits.

31

Bull

WLKR LF CHARACTER 728 M50 ET {DLF,HYF,IEF,MSUDF,MDF,DBF}

/W P44606975 | Calved: 2/9/24 | Tattoo: LE M50 | **Polled**

NJW 79Z Z311 ENDURE 173D ET {SOD}{CHB}{DLF,HYF,IEF,MSUDF,MDF,DBF}

NJW 11B 173D CHARACTER 178J ET {CHB}{DLF,HYF,IEF,MSUDF,MDF}

P44272817 NJW 79Z 10W RITA 11B {DLF,HYF,IEF,MSUDF,MDF}



ILR HOMEGROWN 458B ET {DLF,HYF,IEF,MSUDF,MDF}

6MC HOMEGROWN LADY 728 {DLF,HYF,IEF,MSUDF,MDF}

P43812351 /S LADY DOMINO 2013Z {IEP}

ACT. BW

80

ADJ. WW

NA

ADJ. YW

1013

ADJ. REA

13.94

ADJ. MARB

1.89

CED	BW	WW	YW	DMI	SC	SCF	MILK	M&G	CEM	MCW											
5.4	33%	3.1	60%	81	1%	129	1%	0.7	95%	1.4	15%	27.0	2%	26	55%	67	8%	1.2	55%	111	89%
UDOR	TEAT	CW	MARB	REA	FAT	BMI	BII	CHB													
1.20	56%	1.20	59%	98	3%	0.22	26%	0.87	5%	0.045	77%	548	1%	658	1%	161	8%				

• Recommended for use on heifers.

• Backed by a proven donor female, this dark red herd bull prospect comes with the pedigree and performance to move a program forward. Sired by the \$135,000 AI standout NJW Character, M45 combines meaningful growth with strong maternal value and impressive carcass traits all in one package.

• Ranks in the top 10% for traits.

32

Bull

BLZ MERIT 056H M002 {DLF,HYF,IEF,MSUDF}

P44550494 | Calved: 1/31/24 | Tattoo: RE BLZ/LE M002 | Polled
 JW X651 TESTED 1857 ET {CHB}{DLF,HYF,IEF,MSUDF,MDF}
JW 1857 MERIT 21134 {CHB}{DLF,HYF,IEF,MSUDF,MDF,DBF}
 P44212986 JW 33Z VICTORIA 19027 {DLF,HYF,IEF,MSUDF}



/S REVOLUTION 66128 {CHB}{DLF,HYF,IEF,MSUDF,MDF,DBF}
/S LADY REVOLUTION 056H {DLF,HYF,IEF,MSUDF}
 P44135830 /S LADY EXCEDE 8269F {DLF,HYF,IEF,MSUDF}

CED	BW	WW	YW	DMI	SC	SCF	MILK	M&G	CEM	MCW
3.1 54%	1.9 32%	77 2%	119 3%	1.0 100%	1.7 4%	23.4 8%	33 17%	71 3%	1.6 50%	115 91%
UDDR	TEAT	CW	MARB	REA	FAT	BMI	BII	CHB		
1.40 9%	1.40 13%	97 4%	0.49 4%	0.73 13%	0.005 20%	500 4%	622 3%	177 3%		

• **Homozygous Polled**

- M002 is a unique individual that combines eye-appealing phenotype with breed-leading data in a way that truly puts it all together. Sired by the highly respected Merit and backed by generations of proven Shaw genetics, this bull brings quality and consistency from every angle. M002 will be easy to find on sale day.

- Ranks in the top 10% for 11 traits.

ACT. BW

87

ADJ. WW

728

ADJ. YW

1087

ADJ. REA

NA

ADJ. MARB

NA



JW 1857 MERIT 21134 — SIRE OF LOT 32

33

Bull

BLZ SLINGER D987 M001 {DLF,HYF,IEF,MSUDF,MDF,DBF}

P44550495 | Calved: 1/2/24 | Tattoo: RE BLZ/LE M001 | Polled
 UPS SENSATION 2296 ET {SOD}{DLF,HYF,IEF,MSUDF,MDF,DBF}
LAND SLINGER 2296 1046 {DLF,HYF,IEF,MSUDF,MDF,DBF}
 P44290168 UPS MISS FINAL TEST 9103 {DOD}{DLF,HYF,IEF,MSUDF,MDF,DBF}



MSU TCF REVOLUTION 4R {SOD}{DLF,HYF,IEF,MDF,DBF}
WF MISS DOLORES D973 {DLF,HYF,IEF,MSUDF,MDF,DBF}
 P43827942 WF BELLE B919 {DLF,HYF,IEF,DBF}

CED	BW	WW	YW	DMI	SC	SCF	MILK	M&G	CEM	MCW
7.3 19%	0.8 15%	56 53%	92 48%	0.3 53%	0.6 87%	15.3 70%	24 69%	52 67%	6.5 6%	96 64%
UDOR	TEAT	CW	MARB	REA	FAT	BMI	BII	CHB		
1.40 9%	1.50 4%	79 30%	0.11 53%	0.99 2%	0.035 62%	358 58%	427 59%	132 32%		

• **Recommended for use on heifers.**

- Here is a herd bull prospect with the pedigree of a big-time producer. Sired by the past National Champion Land Slinger and backed by the high-powered donor D973, this young sire brings loads of quality, balance, and future value to the table.

- Ranks in the top 10% for 4 traits.

ACT. BW

76

ADJ. WW

547

ADJ. YW

842

ADJ. REA

NA

ADJ. MARB

NA



WF MISS DOLORES D973 — DAM OF LOT 33

34

Bull

WLKR VANGUARD 9337 3F 403M ET {DLF,HYF,IEF,MSUDF}

/W P44550870 | Calved: 1/1/24 | Tattoo: LE 403 | Polled
 EFBEEF BR VALIDATED B413 {SOD}{CHB}{DLF,HYF,IEF,MSUDF,MDF,DBF}
BIRDWELL VANGUARD 5022 9337 {CHB}{DLF,HYF,IEF,MSUDF,MDF,DBF}
 P44021997 BR SENSATION 028X 3335 5022 {DLF,HYF,IEF,MSUDF}



GERBER ANODYNE 001A {SOD}{CHB}{DLF,HYF,IEF,MSUDF}
ELZE 001A MARY 3F {DOD}{DLF,HYF,IEF}
 P43887037 ELZE 936 MARY 9B {DLF,HYF,IEF,MSUDF}

CED	BW	WW	YW	DMI	SC	SCF	MILK	M&G	CEM	MCW
0.9 73%	1.4 23%	55 59%	87 62%	0.2 52%	0.9 62%	22.2 13%	33 14%	61 27%	0.6 62%	69 13%
UDOR	TEAT	CW	MARB	REA	FAT	BMI	BII	CHB		
1.40 9%	1.60 1%	65 75%	0.39 8%	0.80 8%	0.055 85%	454 13%	546 12%	135 28%		

• **Homozygous Polled**

- A stout-muscled, long-made son of Vanguard that brings loads of marbling genetics in a dark red, freckle-faced herd bull package. Two full sisters were highlights in our recent female sale, proving the consistency in this mating.

- Ranks in the top 10% for 4 traits.

ACT. BW

72

ADJ. WW

NA

ADJ. YW

1150

ADJ. REA

15.17

ADJ. MARB

2.04



ELZE 001A MARY 3F — DAM OF LOT 34



WLKR LF HOUSTON 0021 M49 ET

35

Bull

WLKR LF HOUSTON 0021 M49 ET {DLF,HYF,IEF,MSUDF}

/W P44606974 | Calved: 2/8/24 | Tattoo: LE M49 | **Polled**
SHF DAYBREAK Y02 D287 ET {CHB}{DLF,HYF,IEF,MSUDF}
SHF HOUSTON D287 H086 {CHB}{DLF,HYF,IEF,MSUDF,MDF,DBF}
P44123641 SHF MISS 14 20Z D223 {DLF,HYF,IEF,DBP}



NJW 79Z Z311 ENDURE 173D ET {SOD}{CHB}{DLF,HYF,IEF,MSUDF,MDF,DBF}
/S LADY ENDURE 0021H ET {DLF,HYF,IEF,MSUDF}
P44164376 /S LADY ON TARGET 5002C ET {DLF,HYF,IEF,MSUDF}

ACT. BW 71
ADJ. WW NA
ADJ. YW 1142
ADJ. REA 14.95
ADJ. MARB 1.77

CED	BW	WW	YW	DMI	SC	SCF	MILK	M&G	CEM	MCW											
2.8	57%	4.4	84%	84	1%	134	1%	0.6	88%	2.0	1%	15.3	70%	35	9%	77	1%	2.5	38%	137	99%
UDDR	TEAT		CW	MARB	REA	FAT		BMI		BII		CHB									
1.20	56%	1.10	83%	111	1%	0.02	79%	1.17	1%	0.055	85%	394	36%	485	31%	164	7%				

- M49 is a high-powered son of the popular ST Genetics AI sire SHF Houston, backed by 0021H, a big-time producer in the program. There is true power in the blood here, with performance, consistency, and quality-built in.
- Ranks in the top 10% for 8 traits.

36

Bull

BLZ HOUSTON 198H M011 {DLF,HYF,IEF,MSUDF}

/W P44558083 | Calved: 2/19/24 | Tattoo: RE BLZ/LE M011 | **Polled**
SHF DAYBREAK Y02 D287 ET {CHB}{DLF,HYF,IEF,MSUDF}
SHF HOUSTON D287 H086 {CHB}{DLF,HYF,IEF,MSUDF,MDF,DBF}
P44123641 SHF MISS 14 20Z D223 {DLF,HYF,IEF,DBP}



/S MANDATE 66589 ET {SOD}{DLF,HYF,IEF,MSUDF,MDF,DBF}
WMC 66589 TAMMIE 198H
P44178751 WMC Y509 TAMMIE 55B {DOD}{DLF,HYF,IEF,MSUDF}

ACT. BW 75
ADJ. WW 646
ADJ. YW 871
ADJ. REA NA
ADJ. MARB NA

CED	BW	WW	YW	DMI	SC	SCF	MILK	M&G	CEM	MCW											
8.7	13%	0.0	8%	70	8%	112	8%	0.3	63%	1.7	4%	23.3	8%	29	37%	64	16%	3.7	24%	116	92%
UDOR	TEAT	CW	MARB	REA	FAT	BMI	BII	CHB													
1.50	2%	1.40	13%	96	4%	0.32	13%	0.68	18%	0.085	98%	499	5%	603	4%	169	5%				

- **Recommended for use on heifers.**
- A calving-ease-deluxe Houston son that brings the data set and quality progressive cowmen rely on. This bull is designed to increase your bottom line while siring a set of calves that will be true scale crushers.
- Ranks in the top 10% for 10 traits.



/S LADY ENDURE 0021H ET — DAM OF LOT 35



SHF HOUSTON D287 H086 — SIRE OF LOTS 35 AND 36



WLKR BITCOIN 116K 405M

37

Bull

WLKR GENERATOR 043H 434M ET {DLF,HYF,IEF,MSUDF}

/W P44552343 | Calved: 2/7/24 | Tattoo: 434 | **Polled**
 LOEWEN GENESIS G16 ET {CHB}{DLF,HYF,IEF,MDF,DBF}
EXR GENERATOR 0333 ET {DLF,HYF,IEF,MSUDF,MDF,DBF}
 P44196588 C BAILEES MCKEE 4295 ET {MDF,DBF}



NJW 79Z Z311 ENDURE 173D ET {SOD}{CHB}{DLF,HYF,IEF,MSUDF,MDF,DBF}
WLKR AXA DB MISS 173D W19 043H {DLF,HYF,IEF,MSUDF}
 P44124072 SNOWSHOE P606 PERFECT MISS W19 {DLF,HYF,IEF}

ACT. BW
77
ADJ. WW
NA
ADJ. YW
1179
ADJ. REA
12.82
ADJ. MARB
1.46

CED	BW	WW	YW	DMI	SC	SCF	MILK	M&G	CEM	MCW											
1.3	70%	4.4	85%	72	5%	117	4%	0.3	62%	1.3	22%	23.4	8%	33	18%	68	6%	3.1	31%	97	66%
UDDR	TEAT	CW		MARB		REA		FAT		BMI		BII		CHB							
1.30	26%	1.20	59%	100	3%	0.26	20%	0.65	21%	0.044	77%	503	4%	605	4%	173	4%				

- High performing Generator son that's loaded with mass in an attractive package. The dam of 434M has been a great producer in the program. 434M is a maternal brother to the new herd sire "Dodge City" that Tennessee River Music purchased as the pick of our Spring 2025 ET calf crop.

38

Bull

WLKR BITCOIN 116K 405M {DLF,HYF,IEF,MSUDF}

/W P44582586 | Calved: 1/9/24 | Tattoo: LE 405 | **Polled**
 S16 782B HIGHLAND 84E {DLF,HYF,IEF,MSUDF,MDF}
WLKR LF BITCOIN 84E 728 229K {DLF,HYF,IEF,MSUDF,MDF}
 P44350845 6MC HOMEGROWN LADY 728 {DLF,HYF,IEF,MSUDF,MDF}



LJR MSU Z311 EMBLAZON 392E {CHB}{DLF,HYF,IEF,MSUDF,MDF}
LJR MSU BLAZE 116K {DLF,HYF,IEF,MSUDF,MDF,DBF}
 P44349500 LJR MSU WILLOW 192E

ACT. BW
73
ADJ. WW
678
ADJ. YW
1046
ADJ. REA
13.90
ADJ. MARB
2.70

CED	BW	WW	YW	DMI	SC	SCF	MILK	M&G	CEM	MCW											
8.6	13%	1.8	30%	68	10%	101	23%	0.8	97%	0.9	62%	20.1	25%	24	71%	58	40%	3.1	31%	86	43%
UDDR	TEAT	CW	MARB	REA	FAT	BMI	BII	CHB													
1.30	27%	1.30	32%	64	77%	0.33	12%	0.12	94%	0.045	77%	391	38%	495	27%	112	66%				

- **Recommended for use on heifers.**
- A high-quality individual that expresses meaningful growth in a consistent, heavy-maternal package. This bull brings practicality, balance, and the kind of real-world value producers appreciate.
- Ranks in the top 10% for 1 trait.



EXR GENERATOR 0333 ET - SIRE OF LOT 37



DCF 10C DEFIANCE L32 ET

39

Bull

DCF 10C DEFIANCE L32 ET

(DLF,HYF,IEF,MSUDF,MDF,DBF)



P44475372 | Calved: 1/12/23 | Tattoo: BE 32L | Scurred

LOEWEN GENESIS G16 ET (CHB) (DLF,HYF,IEF,MDF,DBF)

LOEWEN DCF DEFIANCE H49 ET (CHB) (DLF,HYF,IEF,MSUDF,MDF,DBF)

P44205419 LOEWEN MISS 994W 6X 7C (DLF,HYF,IEF,DBP)



CHURCHILL SENSATION 028X (SOD) (DLF,HYF,IEF,MDF,DBF)

LPH 028X 16A MORGANN 10C (DLF,HYF,IEF,MSUDF,MDF,DBF)

P43613024 LPH 4R MORGANN 16A (DLF,HYF,IEF,MSUDF,DBP)

CED	BW	WW	YW	DMI	SC	SCF	MILK	M&G	CEM	MCW											
7.0	21%	2.4	43%	62	29%	106	15%	0.2	50%	1.3	21%	28.9	1%	38	5%	68	6%	8.8	2%	95	62%
UDDR	TEAT	CW	MARB	REA	FAT	BMI	BII	CHB													
1.40	9%	1.50	4%	91	8%	0.35	10%	0.67	19%	0.065	92%	580	1%	682	1%	171	4%				

ACT. BW

67

ADJ. WW

NA

ADJ. YW

NA

ADJ. REA

NA

ADJ. MARB

NA

• Recommended for use on heifers.

- An age-advantage herd bull that has already proven himself on heifers and worked extremely well within the Dry Creek Farms program. Practical, reliable, and the kind you can turn out with confidence. Sired by Loewen Defiance, the same sire that produced the popular AI bull Loewen Sandhills, he brings proven, predictable genetics to the table. He is out of a longtime donor from the Dry Creek Farms program that now resides at P & J Farms in North Carolina. This herd sire combines phenotype with a consistent, dependable number set. Buy with confidence.

- Ranks in the top 10% for 11 traits.

- Dry Creek Farms will retain their name on the registration papers along with the new owners to preserve the right to register all progeny born in 2026 at Dry Creek Farms.

- Owned with Dye Branch Farms



LPH 028X 16A MORGANN 10C — DAM OF LOT 39



LOEWEN DCF DEFIANCE H49 ET — SIRE OF LOT 39

KA-CHING.

MORE POUNDS. MORE CALVES. MORE PROFIT.

Hereford bulls increase net profit by \$51 per cow per year.

That's \$20,000 in additional revenue for a typical 400-cow outfit, thanks to increased fertility and herd size.

Herefords are also the efficiency experts, proven to add value to calves in the feedyard — \$30 per head in profitability.

That's real money and real results.

COME HOME TO HEREFORD.



Hereford.org | 816-842-3757

COMMERCIAL FEMALES



COMMERCIAL FEMALES

TIDMORE FARMS | FYFFE, AL | Ryan Tidmore 256-899-5360

18 Black Baldy and Red Baldy Fall Bred Heifers

All Heifers sired by Walker Hereford Bulls.
Bred to LBW Angus bulls

GILLIAM FARMS | COLUMBIA, TN | Wesley Gilliam 931-446-7582

10 Black Baldy and Red Baldy Spring Open heifers

Sells Open

TMC LAND & CATTLE CO. | WARTRACE, TN | Thomas Cooper 931-703-7781

14 Black Baldy Spring Open Heifers

Born March 2025
Sells Open



WALKER HEREFORDS

ERIC WALKER FAMILY ■ P.O. BOX 146 ■ MORRISON, TN 37357
ERIC WALKER 931-607-6356 ■ CODY WALKER 931-607-0337
WPHF@BENLOMAND.NET ■ WALKERHEREFORDFARM.COM

WHOA.

MORE POUNDS. MORE CALVES. MORE PROFIT.

Herefords are known as the efficiency experts for a reason.
Herefords boost pregnancy rates by 7% and add \$30 per head in
feedyard profitability in a crossbreeding system.

And Hereford genetics bring unrivaled hybrid
vigor, longevity and disposition.

COME HOME TO HEREFORD.



Hereford.org | 816-842-3757

WALKER HEREFORDS PRESENTS

Foundations for the Future '26

SATURDAY, SEPTEMBER 19, 2026

11 AM (Central Time) ■ Walker Herefords Sale Facility ■ Morrison, Tennessee

Selling
150 Head

Including several proven donors
from the heart of the Walker herd.

Create the /W genetic difference in your herd!



LiveAuctions.TV
Watch the sale and bid live online.

ST. JOHN
MARKETING & CONSULTING
Locke St. John • (615) 427-8979

IW
Walker Herefords

ERIC WALKER FAMILY

P.O. Box 146 ■ Morrison, TN 37357

Eric (931) 607-6356 ■ Cody (931) 607-0337

wphf@benlomand.net ■ WalkerHerefordFarm.com

Call, text or email to reserve your sale catalog today!

POWERFUL ■ PRODUCTIVE ■ PROMISING

WALKERHEREFORDFARM.COM



Walker Herefords

[illegible]

GUEST CONSIGNORS



Jernigan Farm

Columbia, TN
Mike, Debbie, Brittany, Blake,
Grant, Natalie, William,
Callan and Christian
615-418-2218



Dry Creek Farms

Pell City, AL
Carter St. John
205-705-4041
Locke St. John
615-427-8979



Blazer Farms

Franklin, TN
Mike McFarlin
615-293-4044

TERMS AND CONDITIONS

1. Terms are check, credit card or cash. Each animal to be sold to the highest bidder. The auctioneer shall settle any dispute as to bids.
2. All cattle are to be paid for by the purchasers during or immediately after the sale.
3. Each animal will be at purchaser's risk immediately after the animal is sold. They will be fed and cared for free of charge for a reasonable length of time after the sale, but at the purchaser's risk (buyer can have them insured against this risk at a nominal rate) and will be turned over to the buyer or shipped as he may direct.
4. Guarantee: All bulls sold through the sale are guaranteed to be satisfactory breeders for the first breeding season following the sale. All bulls selling have been semen evaluated, scrotal measured and given a breeding soundness exam. If there is a reproductive problem, contact us immediately and a replacement bull will be provided if available or a credit equal to the animal's purchase price minus salvage value will be issued for the replacement of one animal. This guarantee does not cover illness or death to the animal. There will be livestock mortality insurance available on sale day at the settlement table at the buyer's expense.
5. Health: Cattle may be shipped into any state.
6. Announcements at the sale ring by the owners or the auctioneer concerning the cattle will take precedence over statements in the sale catalog.
7. All persons who attend the sale do so at their own risk and the owners or management assume no liability, legal or otherwise, for any accidents that may occur.
8. EPDs listed in the catalog were current as of Dec. 9, 2025. Visit [HerefordsOnDemand.com](https://www.herefordsondemand.com) to view and search Live EPDs.

*****We gladly accept American Express, Discover, Mastercard and Visa.***

Scrotal Circumference Measurements will be included on the Sale Supplement sheet.



TENNESSEE AGRICULTURE ENHANCEMENT PROGRAM

All bulls that qualify for the TAEF maximum cost share reimbursement will be marked on the sale day supplement.

[WALKERHEREFORDFARM.COM](https://www.walkerherefordfarm.com)



Walker Herefords



WALKER HEREFORDS

Eric Walker & Family
P.O. Box 146
Morrison, TN 37357

Foundations for the Future

BULL SALE

SATURDAY, FEB. 7, 2026 | 12 NOON (CST)

Walker Herefords Sale Facility • Morrison, Tennessee



TENNESSEE AGRICULTURE ENHANCEMENT PROGRAM All bulls that qualify for the TAEP maximum cost share reimbursement will be marked on the sale day supplement.