



2026 WIESE & SONS HEREFORDS

PRIVATE TREATY OFFERING

MANNING, IOWA



Welcome Cattle Producers,

On behalf of the entire Wiese family, we hope this catalog finds you well and thank you for showing interest in our Hereford seedstock operation. Our program dates back to 1912, where five Wiese generations have worked diligently to establish a reputable brand built on honesty and integrity. We strive to develop quality, real-world Hereford genetics while also emphasizing soil and land preservation through continuous land stewardship and conservation practices.

For the first time in our existence, the American Hereford Association will soon recognize our ranch as a Platinum TPR breeder, achieved by collecting essential data points throughout an animal's development cycle and embracing Genomic DNA Testing. Not only do we go the extra mile to collect this data for your benefit, but we also use this information when making our breeding decisions each year to ensure we maximize the genetic potential for advancing our cow herd.

While we typically specialize in bull production, we take great pride in raising every female on the ranch in a no-nonsense environment. We cull extensively to ensure the bulls within this sale offering stem from cows who are docile, fertile, efficient, and hard-working. Doing so not only allows us to maintain a premier cow herd, our brand's been built upon, but to better inform you of the replacement heifer potential of the bulls we offer year in and out.

To our repeat customers, we thank you for your continued support and belief in our program as your Hereford genetic supplier. To our potential new customers, we look forward to earning your trust and doing our part to help you succeed. We genuinely believe we're in the people business and strive to do our best before, during, and after the sale. If you have any questions on bulls, females, marketing, nutrition, or anything else, please do not hesitate to contact any one of us. From the bottom of our hearts, it has been and always will be a privilege to find the right "Good Doin' Bull" for you and your cow herd.

Sincerely,
The Wiese Family



TERMS & CONDITIONS

Private Treaty for Your Convenience

Bulls are offered on a first-come, first-served basis and available for viewing here at the ranch with prior arrangements. You may select your bulls at any time and will have passed a breeding soundness examination prior to pick-up or delivery. In the unlikely event that a bull selected does not pass its BSE, we'll do our best to find a bull of similar likeness to replace the one initially selected.

The bulls you see offered throughout this catalog are available at the time of printing and we cannot guarantee their availability at the time of your inquiry.

Wiese Guarantee

All bulls sold here at Wiese & Sons are guaranteed to be sound and healthy breeders at the start of their first breeding season. If an injury or problem occurs within the first 90 days of breeding, the buyer will receive a replacement bull, if available, or credit toward a replacement bull of equal value. Wiese & Sons will retain all salvage value in either scenario. All injuries must be diagnosed by a licensed veterinarian and reported to Wiese & Sons as soon as they occur.

Herd Health

All bulls are in excellent health and developed on a high-roughage feed ration, with an extensive vaccine protocol as recommended by our veterinarians and nutritionists. Bulls will be semen tested and inspected by a licensed veterinarian prior to their departure from our operation.

Housing & Delivery

Following the conclusion of the sale, Wiese & Sons offers free development and housing for bulls purchased through June 1st. Bulls that cannot be delivered or picked up by then will be kept at a cost of \$4 per head per day.

In-Herd Semen Use

Wiese & Sons reserves the right to in-herd semen use on all bulls sold within this offering. Collection of said bull will be conducted at the buyer's convenience and the seller's expense.

Insurance

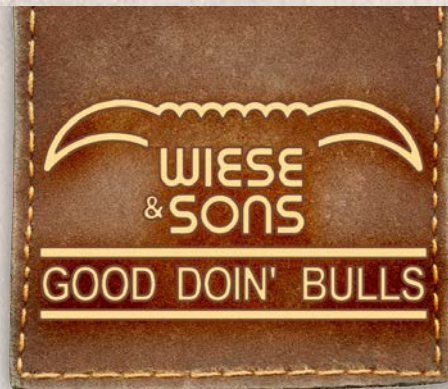
Customers are encouraged to purchase mortality insurance for their bulls at the time of purchase. While there are many options, we recommend that the buyer purchase insurance through their preferred insurer to meet their needs.

EPDs

All bulls in the offering have been DNA tested for genomically enhanced EPDs, genetic abnormalities, parent verification, and Horned/Polled Status. EPDs listed within this catalog are current at the time of printing. For current EPDs, give us a call or visit the American Hereford Association website to search for the most up-to-date information.

Sale Terms & Liability

All sales are cash and must be paid in full unless arrangements are made with the seller prior to pick-up or delivery. Bulls become the purchasers' property as soon as they are selected, but the seller must see that the animals are properly cared for until needed. Any death or injury after the animal is sold is at the buyer's risk. All persons who visit the ranch do so at their own risk. Neither Wiese & Sons nor any person connected to this ranch assumes any liability, legal or otherwise, for accidents, illness, or loss of property that may occur.



SALE INFORMATION

Ranch Address

31554 Delta Ave.
Manning, IA 51455

Contact Information

David Wiese
(712) 210-6378

Chance Wiese
(712) 210-6893

Shayne Wiese
(712) 210-6895

wieseandsons@gmail.com
www.wieseandsons.com

Vet Services

AMVC Manning
(712) 653-9460

AMVC Audubon
(712) 563-4201

Nutritionist

Ethan Blom (507) 227-1968

Eric Ochsendorf (712) 348-2582

Social Media



@wieseandsons

Lodging

Cobblestone Inn & Suites
120 Heritage Dr.
Manning, IA 51455
(712) 655-4000

Online Catalog and Supplement Sheet
can be found at

www.wieseandsons.com

GOOD DOIN' Advantage

Why Wiese & Sons Bulls?

Our breeding program strives to raise rugged, athletic range bulls, developed on a high-roughage ration for longevity promotion. We ruthlessly cull our replacement heifers and cow herd to ensure that the mothers these bulls stem from are everything you'd want in your own replacement females. Lastly, we've collected honest and accurate data points for decades, so you can better expect the numbers behind the bulls to be what you are looking for.

Customer Satisfaction Guarantee

We proudly stand behind the bulls we market every year by offering an unconditional 90-day first-breeding season guarantee. We also ensure that those electing to purchase their bulls sight unseen are satisfied with our selection and that it meets their approval and expectations.

Free Development & Housing

We will happily house, develop, and care for your bull free of charge unit June 1st. Whether you visit and select your bull a day before turnout or months prior, we have got you covered!

Volume Discount

We value our volume buyers and gladly offer discounts to those who purchase multiple bulls for their upcoming breeding season. Call ahead or ask us at the time of your visit for more information.

Marketing Assistance

One of our philosophies here at Wiese & Sons is that we don't want to be viewed as just your Hereford genetic supplier. We want to help you achieve a premium for your hard work. With advanced notice, we can contact our order buyers and fellow clients seeking Wiese & Sons Hereford-influenced genetics.

*Visit our website to submit information on the livestock you wish to market at the following URL:
<https://wieseandsons.com/marketing/>*



Why **HEREFORD BULLS**

Fertility: *The proof is in the research; data show a 7% pregnancy advantage with F1 females compared to their straight-bred counterparts, providing an immediate return to one's ranch and operation.*

Efficiency: *Studies conducted at Oklahoma State University found that, on average, F1 females consume 2 lbs. less per day on pasture while maintaining a body condition score 0.5 higher than that of their counterparts. Baldies do less with more and with today's input prices, that can add up quickly!*

Longevity: *If there's one thing Herefords are known for, it's their hardiness and ability to last. As a result, you can expect more breeding seasons from your Hereford bull and more mileage from your investment. Additionally, research conducted at Colorado State University shows that Herefords and F1 Baldies have been less susceptible to congestive heart failure within the feedlot.*

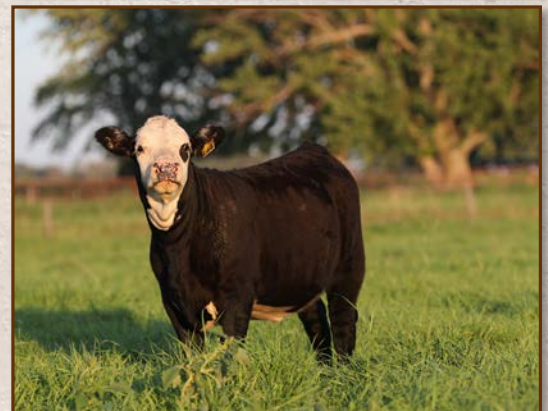
Docility: *: Some traits cannot be measured on paper and should be non-negotiable. Docility is no exception! By using Hereford bulls, you should expect calmer cattle, a better rate of gain, and most importantly, greater safety for you, your employees, and your family.*

Black Baldy Steer Advantage

- *Heavier Weaning Weights*
- *Increased Feed Efficiency*
- *Lower Cost of Gain*
- *\$28 per Head Less Feed Cost Across the Finishing Period*
- *F1 Baldy Female Advantage*

Black Baldy Female Advantage

- *7% Higher Pregnancy Rate*
- *More Calves Weaned per Cow Exposed*
- *\$90 More Generated per Cow per Year*
- *3.5% More Average Rate of Return on Assets*
- *2 lbs. Less Forage Required per Day While Maintaining a Higher Body Condition*



REFERENCE *Sires*



KJ F31 RANCHER 763K



JD AH PROMINENT 21G ET



WS PROMINENT 21G K27 ET



WS PROMINENT 21G K46



WS PROMINENT 21G J121



R ENTRUST 7522

KJ F31 Rancher 763K 44361522	Polled	UPS Harvester 9985 KJ 969A Misty F31 ET	CE	BWT	WWT	YWT	SC	SCF	MM	CW	REA	MARB	\$BMI	\$CHB
			15.9	0.1	59	107	1.4	27.7	32	65	1.16	0.04	522	115
JD AH Prominent 21G ET 44014204	Homozygous Polled	JDH 11B Stud 3134 63E JDH AH MS 34X Victor 33Z 45C ET	CE	BWT	WWT	YWT	SC	SCF	MM	CW	REA	MARB	\$BMI	\$CHB
			-0.2	3.1	66	98	1.8	28.3	31	79	0.60	0.61	572	176
WS Prominent 21G K27 ET 44339848	Homozygous Polled	JDH AH Prominent 21G ET WS Grand Marketta 644 1108	CE	BWT	WWT	YWT	SC	SCF	MM	CW	REA	MARB	\$BMI	\$CHB
			-6.6	6.2	65	111	1.2	22.7	22	69	0.66	0.20	454	126
WS Prominent 21G K46 44348365	Polled	JDH AH Prominent 21G ET WS Queen Ten 8200 D77	CE	BWT	WWT	YWT	SC	SCF	MM	CW	REA	MARB	\$BMI	\$CHB
			-6.0	5.9	64	98	1.7	18.0	25	76	0.50	0.35	396	143
WS Prominent 21G J121 44261587	Homozygous Polled	JDH AH Prominent 21G ET WS Miss Battle 120 E247	CE	BWT	WWT	YWT	SC	SCF	MM	CW	REA	MARB	\$BMI	\$CHB
			-5.9	5.9	72	118	0.9	19.2	20	79	0.71	0.53	414	154
R Entrust 7522 44365752	Polled	RST 167Y Trust 8132 R Miss New York 217	CE	BWT	WWT	YWT	SC	SCF	MM	CW	REA	MARB	\$BMI	\$CHB
			10.5	0.1	62	108	2.4	21.4	22	76	0.40	0.14	421	121

REFERENCE *Sires*



WS PROMINENT 21G J48



BUFORD BLUESTEM 1205 ET



WS PROMINENT 21G L55



BUFORD 2253 ET



WS PROMINENT 21G L25 ET



AW STATESMAN 038H

WS Prominent 21G J48 44240996	Homozygous Polled	JDH AH Prominent 21G ET WS Victoria 06A E16	CE	BWT	WWT	YWT	SC	SCF	MM	CW	REA	MARB	\$BMI	\$CHB
			-6.4	5.9	66	96	1.8	20.1	23	82	0.60	0.20	434	142
Buford Bluestem 1205 ET 44294292	Horned	Churchill High Noon 8339F ET CL 1 Dominette 687D ET	CE	BWT	WWT	YWT	SC	SCF	MM	CW	REA	MARB	\$BMI	\$CHB
			0.1	4.5	61	94	1.1	15.1	21	71	0.62	0.18	338	122
WS Prominent 21G L55 44451138	Homozygous Polled	JDH AH Prominent 21G ET WS Queen Ten 3300 E181	CE	BWT	WWT	YWT	SC	SCF	MM	CW	REA	MARB	\$BMI	\$CHB
			4.1	1.7	54	82	2.2	24.1	28	73	0.22	0.63	477	151
Buford 2253 ET 44419689	Horned	Churchill High Noon 8339F ET HH Miss Advance 5031C ET	CE	BWT	WWT	YWT	SC	SCF	MM	CW	REA	MARB	\$BMI	\$CHB
			3.3	4.3	64	109	1.4	18.3	28	79	0.62	0.13	397	135
WS Prominent 21G L25 ET 44449636	Polled	JDH AH Prominent 21G ET KJ 274S Roxy 482Y ET	CE	BWT	WWT	YWT	SC	SCF	MM	CW	REA	MARB	\$BMI	\$CHB
			-1.3	3.8	59	89	1.5	24.7	40	75	0.47	0.16	492	129
AW Statesman 038H 44177977	Homozygous Polled	F Final Test 722 AW Lady Excede 82F	CE	BWT	WWT	YWT	SC	SCF	MM	CW	REA	MARB	\$BMI	\$CHB
			16.8	-4.0	53	83	0.6	29.8	31	55	0.16	0.73	570	161

PRIVATE TREATY

Bulls



PRIVATE TREATY *Bulls*

1

NAME Registration #	Status	DOB	Sire Dam (Dam's Age)	BWT	205	Pigment	CE	BWT	WWT	YWT	MM
							CW	REA	MARB	\$BMI	\$CHB
WS RANCHER 763K N01 44654490	Homozygous Polled	2/12/2025	KJ F31 RANCHER 763K WS MISS PROMINENT 21G L175 (2)	59	626	100 / 100	12.2	-1.7	52	87	27
							75	0.95	0.28	501	139

Rancher 763K has been our go-to heifer bull for three breeding seasons. N01 is a high CED son that is moderate-framed and has the muscle shape that is hard to find in low birthweight options. L175, his dam, is one of our favorite coming three-year-olds. Generations of great cows in this pedigree.

2

WS RANCHER 763K N03 44655457	Horned	2/15/2025	KJ F31 RANCHER 763K WS MISS PROMINENT 21G L108 (2)	68	518	100 / 100	6.6	0.5	46	79	35
							65	0.81	0.56	495	157

Short-marked and heavy pigmented 763K son that is built for the low-input focused producers. Moderate, easy doin', and great feet. He should thrive on grass while breeding cows. His mother, L108, derives from a no-miss mating. High marbling genetics without sacrificing non-negotiable traits.

3

WS RANCHER 763K N05 44655459	Homozygous Polled	2/16/2025	KJ F31 RANCHER 763K WS MISS PROMINENT 21G L98 (2)	58	706	100 / 100	15.2	-1.4	55	96	30
							74	0.85	0.11	454	123

This is a big-time Herd Bull prospect. N05 is a phenotypic standout. Perfect markings and pigment. Homozygous polled, elite EPD figures, and out of a beautiful 21G x King Ten daughter. One of the best in the sale pen. He will catch your eye.

4

WS RANCHER 763K N07 44655460	Horned	2/17/2025	KJ F31 RANCHER 763K WS MISS PROMINENT 21G L05 (2)	80	707	100 / 100	3.8	3.8	74	127	33
							85	0.81	0.25	434	154

A horned Rancher son with extra growth and carcass figures.† He is a genetic specimen. This is the kind of bull to raise steers that perform in the feedlot and daughters that flat-out produce. We think very highly of his mother, L05, and see her making a significant impact on our program.

5

WS RANCHER 763K N08 44655461	Horned	2/17/2025	KJ F31 RANCHER 763K WS QUEEN TEN G46 L45 (2)	69	600	100 / 100	13.9	-0.8	49	81	29
							52	0.24	0.22	483	93

Goggled-eyed pigment bull that is red to the ground. Moderate and easy fleshing with extra depth of body. Sleep-all-night, calving-ease genetics with a Sustained Cow Fertility epd that is hard to find. He will be a fan-favorite.

6

WS RANCHER 763K N09 44655463	Horned	2/17/2025	KJ F31 RANCHER 763K WS GRAND DUCHESS D635 L56 (2)	69	627	100 / 100	10.0	0.8	46	79	31
							71	0.60	0.04	393	107

N09 is a heifer-safe, range bull that offers extra pigment and the ideal body shape to make tremendous daughters. He stems from a hard-working cow line that pays the bills.

7

WS RANCHER 763K N10 44655464	Homozygous Polled	2/17/2025	KJ F31 RANCHER 763K WS QUEEN TEN G170 L86 (2)	79	676	100 / 100	10.5	3.5	62	109	25
							61	1.01	-0.08	355	85

To have a high CED bull with some muscle and masculinity is a challenge in the modern beef industry. This bull accomplishes that and still packs some performance. We pride ourselves on balanced trait selection and phenotype-first philosophies. This bull hits the mark.

PRIVATE TREATY *Bulls*



8

NAME Registration #	Status	DOB	Sire Dam (Dam's Age)	BWT	205	Pigment	CE	BWT	WWT	YWT	MM
							CW	REA	MARB	\$BMI	\$CHB
WS STATESMAN 038 N11 44686133	Polled	2/17/2025	AW STATESMAN 038H WS QUEEN TEN H96 L206 (2)	65	566	100 / 100	6.5	3.5	68	119	22
							77	0.81	0.12	395	128

We sampled Statesmen 038 in our AI program after some discussion with our great friend Marty Lueck. Statesmen did precisely what we hoped for. N11 is the only 038 son in the offering. Incredible teat and udder genetics, top-tier marbling, and high-ranking Longevity Epd. Heifer-Approved.

9

WS RANCHER 763K N13 44686103	Horned	2/17/2025	KJ F31 RANCHER 763K WS QUEEN TEN G170 L129 (2)	70	666	100 / 100	10.5	-0.5	40	64	31
							59	0.07	0.55	513	139

One of the phenotypic standouts of the year. A horned Rancher son out of a King Ten cow. Balanced traits with a masculine, herd bull look. We would love another 20 bulls just like him. Already developing freckles on his face!

10

WS RANCHER 763K N15 44655465	Homozygous Polled	2/18/2025	KJ F31 RANCHER 763K WS MISS PROMINENT J121 L179 (2)	74	529	100 / 60	8.9	1.5	57	98	25
							59	1.09	0.16	409	112

This is one of the sleepers of the pen. We think the dam of this bull is incredible. N15 has excellent feet and legs, with extra muscle shape in a moderate-framed build. Generations of some of our best udder quality genetics. Homozygous Polled!

11

WS RANCHER 763K N20 44655700	Polled	2/23/2025	KJ F31 RANCHER 763K WS QUEEN TEN G46 L31 (2)	78	620	100 / 100	7.4	2.6	62	107	32
							69	0.71	0.08	458	114

Very unique breeding piece here. N20 traces back to On Duty 150E, who produced some great cows for the NJW program. This stud is big-bodied and the grass-efficient type. The versatile kind that makes excellent daughters and steers that perform.

12

WS PROMINENT J48 N22 44655713	Polled	3/4/2025	WS PROMINENT 21G J48 WS QUEEN TEN 8200 5188 (10)	78	586	100 / 100	-4.5	3.7	50	72	27
							69	0.40	0.29	448	128

This is a Dave Wiese bull. Rugged build and perfect eye pigment. N22 should develop into a masculine stud that you are proud to display in the front pasture. Extra marbling without sacrificing the future daughter's longevity. His mother thrives at over 10 years old.

13

WS HIGH NOON 1205 N25 44671898	Polled	3/7/2025	BUFORD BLUESTEM 1205 ET WS MISS PROMINENT 21G J214 (4)	79	589	0 / 0	2.8	2.1	55	84	22
							73	0.45	0.27	422	141

We love range bulls that are big-footed and stout. This High Noon descendant is precisely that. Balanced figures on his epd spread with a moderate, good doini design. Low Dry Matter Intake genetics that should make cost-efficient daughters and steers with excellent feed conversion.

PRIVATE TREATY *Bulls*

14

NAME Registration #	Status	DOB	Sire Dam (Dam's Age)	BWT	205	Pigment	CE	BWT	WWT	YWT	MM
							CW	REA	MARB	\$BMI	\$CHB
WS PROMINENT L55 N26 44671905	Polled	3/7/2025	WS PROMINENT 21G L55 WS MISS LONG HAUL 36E K07 (3)	80	680	100/80	4.7	1.3	53	80	32
							61	0.26	0.15	339	93

N26 is dark, cherry red, and a fan favorite among visitors. He was the first L55 son to arrive, and we are very pleased with the results. Thick-ended and long-bodied. An impressive scrotal circumference should lead to fertile, easy-to-breed daughters. His mother, K07, has done a great job in her young career. One of our highest weaning weights!

15

WS PROMINENT 21G N27 44671909	Polled	3/8/2025	JDH AH PROMINENT 21G ET WS GRAND MARKETTA 4190 E79 (8)	99	597	100/100	-2.1	4.1	53	80	25
							70	0.20	0.39	398	141

Pounds pay. They always have and they always will. N27 has taken off after weaning and will generate some excellent feeder cattle with extra marbling. Dark red with perfect eye pigment, and he is easy to pick out. Another 21G son that exemplifies why we keep using that bull so heavily in our operation.

16

WS RANCHER 763K N30 44671916	Polled	3/9/2025	KJ F31 RANCHER 763K WS QUEEN TEN 5247 J54 (4)	94	654	100/100	2.9	5.2	60	109	33
							75	0.95	-0.01	416	119

We flat-out love this one. A Rancher son with some extra length and stretch. N30 has a stacked pedigree that traces back to our oldest donor cow, 1108. This goggle-eyed, short-marked bull should lead to beautiful uddered females and steers that satisfy when they cross the scales.

17

WS PROMINENT K27 N34 44678342	Homozygous Polled	3/11/2025	WS PROMINENT 21G K27 ET WS MANDELLA 66589 H34 (5)	86	651	100/100	-3.4	3.7	72	115	26
							80	0.72	0.22	422	138

The cattlemen kind. N34 is one of our very favorite K27 sons. Homozygous polled, big-time pigment, and top-end weaning/yearling weight figures. His mother is our very best Mandate daughter and an absolute tank. Cow families on both sides of his pedigree are some of our best.

18

WS PROMINENT K46 N36 44678347	Homozygous Polled	3/11/2025	WS PROMINENT 21G K46 WS MISS BATTLE 120 5213 (10)	89	641	100/100	-3.3	3.9	54	85	28
							62	0.10	0.43	431	126

Long-bodied and extra performance. Homozygous polled bull that comes from one of our very best old cows, 5213. N36 checks a lot of boxes: elite udder genetics, extra marbling figures, a rugged phenotype, and long-lasting foot shape.

19

WS PROMINENT K27 N39 44678380	Homozygous Polled	3/11/2025	WS PROMINENT 21G K27 ET WS MISS SENSATION 028X G26 (6)	87	717	100/100	0.4	3.3	56	90	25
							52	0.65	-0.03	415	84

One of the top weaning weights! Our performance king. N39 is dense, soggy, and a powerhouse. He was the easiest to pick out on summer pasture. The K27 mating on 028X daughters really clicked for us. This bull is an apparent reason why.

	NAME Registration #	Status	DOB	Sire Dam (Dam's Age)	BWT	205	Pigment	CE	BWT	WWT	YWT	MM
								CW	REA	MARB	\$BMI	\$CHB
20	WS PROMINENT 21G N40 44678389	Homozygous Polled	3/11/2025	JDH AH PROMINENT 21G ET WS REBELLA 592 G52 (6)	89	641	100 / 100	0.4 73	3.2 0.35	59 0.45	88 449	34 154
N40 is a truck. If you like them super stout, full of meat and muscle, and big ribbed, this is the bull for you. Homozygous polled and is out of a hard-working, reliable mother. The functional-trait-focused kind that should make incredible F1 baldy calves.												
21	WS PROMINENT K27 N41 ET 44678392	Homozygous Polled	3/12/2025	WS PROMINENT 21G K27 ET AH MS 25L RUMBLER 19Z (13)	ET	669	80 / 60	-0.7 58	3.6 0.54	55 0.18	92 359	24 110
One of our two Embryo Transfer calves. We only do a small amount of ET work, and it has to be impactful. This bull hits the mark. Homozygous polled and balanced across all traits. N41 has a dark red, attention-grabbing look and a pedigree filled with productive cows.												
22	WS HIGH NOON 1205 N42 44678396	Horned	3/12/2025	BUFORD BLUESTEM 1205 ET WS QUEEN TEN G46 K104 (3)	82	585	80 / 20	0.0 55	2.9 0.38	49 0.37	79 347	20 115
This is a bull to build a cowherd around. We love N42 in terms of skeletal design and profile. He has the foot shape and structure to remain durable and last a long time. A horned High Noon grandson out of a stellar King Ten cow: as traditional a Hereford bull as they come.												
23	WS PROMINENT K27 N43 ET 44678398	Homozygous Polled	3/12/2025	WS PROMINENT 21G K27 ET AH MS 25L RUMBLER 19Z (13)	ET	633	100 / 0	-1.6 71	4.5 0.43	61 0.25	106 379	25 133
Full brother to N41. They are peas in a pod. Anything in our program that has 9186 in the pedigree has lasted well past 10 years old. Sound structured and dark, cherry red. 19Z has left a significant impact on the Hereford breed, and we are thrilled to offer her genetics to our customers through these sons.												
24	WS PROMINENT J48 N51 44678660	Polled	3/13/2025	WS PROMINENT 21G J48 WS QUEEN TEN 113 F145 (7)	92	574	100 / 100	-3.9 70	4.8 0.35	51 0.04	79 339	30 116
A no-nonsense bull that fits the low-input mold. N51 is moderate and dense. He is perfect for making F1 baldies that produce awesome cows and sought-after feeder calves. Out of a King Ten dam that gets the job done without any headaches.												
25	WS ENTRUST 7522 N52 44678661	Horned	3/13/2025	R ENTRUST 7522 WS GRAND DUCHESS D635 J147 (4)	79	686	100 / 80	7.4 68	-0.7 0.42	54 0.16	84 438	30 109
It is hard to achieve calving ease without sacrificing growth and performance. N52 is a bull that can work on heifers and still produce a valuable feeder calf. One of our few Entrust sons in the offering. 7522 is an outcross bull we integrated into our breeding program from the Rausch herd. Very good weaning weight bull!												
26	WS PROMINENT 21G N55 44678665	Polled	3/13/2025	JDH AH PROMINENT 21G ET WS FORTRESS D168 H220 (5)	80	626	100 / 100	-1.3 83	3.3 0.66	60 0.40	90 478	25 163
This bull is bulletproof. N55 summered on fescue pasture with no creep. Sound footed and easy doin. This bull has all the essential traits to thrive for a cost-focused cattle producer: low Dry Matter Intake, moderate Milk, and a hard-working mother. Buy with confidence.												
27	WS PROMINENT 21G N56 44681504	Polled	3/14/2025	JDH AH PROMINENT 21G ET WS QUEEN TEN 3300 G172 (6)	79	584	20 / 100	6.4 62	1.2 0.37	50 0.65	80 440	21 155
Another 21G son out of a King Ten cow. This mating has been our most reliable for the last few years. † Moderate framed with a Mature Cow Weight epd below breed average. This bull has excellent depth of body and should make tremendous daughters for the grazing-focused producer. Marbling figures are 4x the breed average.												
28	WS PROMINENT 21G N58 44681506	Polled	3/14/2025	JDH AH PROMINENT 21G ET WS MISS BATTLE 120 F132 (7)	89	618	100 / 60	-2.2 73	3.3 0.68	52 0.40	81 438	29 153
One of our very favorites! N58 is the exact kind of phenotype that we want to replicate for our customers. Stout, big ribbed, and great structured. 21G will leave a lasting impact on our program, and this son is the perfect example of why. Perfect eye pigment and traditional Hereford markings.												
29	WS RANCHER 763K N60 44681509	Polled	3/14/2025	KJ F31 RANCHER 763K WS QUEEN TEN E213 J231 (4)	94	703	100 / 40	-3.3 75	5.6 0.77	61 0.00	113 410	28 123
Performance enthusiasts take note! This is one of the very best Rancher sons. We love his masculine features and thickness. This one will make a herd bull that will propel a commercial cow herd in the right direction. One of our very highest weaning weights.												
30	WS PROMINENT K27 N62 44681512	Polled	3/14/2025	WS PROMINENT 21G K27 ET WS MISS ON DUTY 150E H22 (5)	65	550	100 / 100	0.5 71	4.0 0.47	60 0.18	103 354	21 127
A twin-born, K27 son that has packed on more pounds post-weaning than any other bull. We love N62 for his easy doini type and extra fleshing ability. His mother is one of our few On Duty 150E cows, and we love what they have done for our program. F1 baldies females should be top-notch and auction market sale highlights.												

PRIVATE TREATY *Bulls*

31

NAME Registration #	Status	DOB	Sire Dam (Dam's Age)	BWT	205	Pigment	CE CW	BWT REA	WWT MARB	YWT \$BMI	MM \$CHB
WS PROMINENT K46 N64 44681514	Homozygous Polled	3/14/2025	WS PROMINENT 21G K46 WS MISS BATTLE 120 G134 (6)	89	576	100 / 100	-3.8 61	4.5 0.25	57 0.24	95 406	31 114

We cannot say enough good things about his mother. G134 is one of our very best cows and is in the prime of her career. N64 has the extra length and performance to make great feeder steers, but the maternal backing to make prideful replacement heifers. Versatility at its finest. Homozygous Polled.

32

WS PROMINENT K46 N66 44681519	Horned	3/15/2025	WS PROMINENT 21G K46 WS FORTRESS E45 H219 (5)	93	671	100 / 100	-1.6 61	4.3 0.38	56 0.16	81 442	26 98
---	--------	-----------	--	----	-----	-----------	------------	-------------	------------	-----------	----------

The epitome of a range bull. This bull combines performance with a masculine appearance. N66 is a horned K46 son with one of our heaviest weaning weights. Our first set of K46 calves were very consistent, and we loved the daughters. N66 is an excellent representation of why K46 will see continued use in our breeding program.

33

WS PROMINENT K46 N69 44681530	Polled	3/15/2025	WS PROMINENT 21G K46 WS MISS BATTLE 120 G57 (6)	99	642	100 / 100	-10.4 64	7.5 0.20	59 0.11	86 326	23 98
---	--------	-----------	--	----	-----	-----------	-------------	-------------	------------	-----------	----------

This is an excellent option for producers who feed out their calves. N69 is a K46 son with extra length and frame. A set of this bulls calves should be a farmer's feeder's dream. Generations of straight Wiese bloodlines in this pedigree.

34

WS PROMINENT J121 N73 44681548	Polled	3/16/2025	WS PROMINENT 21G J121 WS MANDELLA 66589 H35 (5)	75	617	80 / 0	5.7 68	2.0 0.59	57 0.34	82 417	21 130
--	--------	-----------	--	----	-----	--------	-----------	-------------	------------	-----------	-----------

N73 combines all of the great performance traits from his sire, J121, with lower-birthweight epds. We really pride ourselves on balanced-trait, no-nonsense selection criteria. This bull really showcases that. His mother is a more moderate-framed cow with an excellent udder: the kind that never goes out of style.

35

WS ENTRUST 7522 N82 44682484	Horned	3/18/2025	R ENTRUST 7522 WS MISS BATTLE 120 E184 (8)	92	656	100 / 100	-4.8 81	4.7 0.29	60 0.31	110 367	23 144
--	--------	-----------	---	----	-----	-----------	------------	-------------	------------	------------	-----------

One of our very favorite Entrust 7522 sons. Extra stretch and length to make great future feedlot cattle. N82 offers plenty of carcass merit, with growth, without sacrificing foot quality and an easy-fleshing body shape.

36

WS PROMINENT 21G N85 44682490	Homozygous Polled	3/18/2025	JDH AH PROMINENT 21G ET WS QUEEN TEN 0209 4134 (11)	91	680	100 / 100	-0.8 73	3.2 0.50	58 0.35	81 570	27 140
---	----------------------	-----------	--	----	-----	-----------	------------	-------------	------------	-----------	-----------

This may be the best 21G son we have bred and raised. We cannot say enough about how much we like this stud. Excellent structure and feet and he pairs it with the right kind of muscle and herd bull look. His mother is timeless and one of our oldest cows in the herd. Cow Longevity and Baldy Maternal Index EPDs are in the top 1% of the Hereford breed. A Standout Among His Peers!

	NAME Registration #	Status	DOB	Sire Dam (Dam's Age)	BWT	205	Pigment	CE	BWT	WWT	YWT	MM
								CW	REA	MARB	\$BMI	\$CHB
37	WS RANCHER 763K N92 44682519	Homozygous Polled	3/18/2025	KJ F31 RANCHER 763K WS VICTORIA E187 J70 (4)	89	647	100 / 100	1.5 69	3.8 0.91	63 0.28	105 334	20 136
A Homozygous Polled Rancher son! This is the commercial cattlemen's kind of bull! So thick and dense with a soggy sweep to his rib cage. A balanced EPD profile with a mother who is an absolute tank. A Good Doin Bull.												
38	WS PROMINENT J121 N93 44682521	Polled	3/18/2025	WS PROMINENT 21G J121 WS GRAND MARKETTA D71 G225 (6)	89	625	80 / 80	-4.2 80	4.0 0.38	57 0.35	96 381	27 136
A durable-built J121 son with ideal markings and stoutness. N93 is the long-lasting, range bull type. His mother, G225, has been nothing but consistent and always makes highly sought-after progeny in the pen. Extra marbling without giving up phenotype.												
39	WS PROMINENT J121 N95 44682902	Polled	3/19/2025	WS PROMINENT 21G J121 WS QUEEN TEN 5247 G03 (6)	84	605	100 / 100	-3.2 61	4.8 0.55	57 0.12	94 345	14 93
N95 is a big testicled, stout J121 son that should make baldies that are top-notch. He is an excellent option for breeders who put emphasis on low cost of production. Moderate growth, low milk figures with long-lasting udders, forage-efficient fleshing ability, and generations of great cows in the pedigree.												
40	WS PROMINENT K46 N96 44682903	Polled	3/19/2025	WS PROMINENT 21G K46 WS VICTORIA 06A F78 (7)	99	621	100 / 60	-7.0 86	7.1 0.55	65 0.16	108 428	26 147
N96 has a pedigree that we are very high on. His dam, F78, has one of our strongest production histories and elite udder and teat confirmation. A big scrotal K46 son, filled with muscle and performance. We would love to feed a set of baldy calves out from this beef bull!												
41	WS ENTRUST 7522 N98 44682908	Polled	3/19/2025	R ENTRUST 7522 WS QUEEN TEN G170 K226 (3)	82	588	100 / 100	7.5 82	1.9 0.66	60 0.17	100 388	20 139
Another 7522 son, but in a more moderate framed package. We really like how this one is designed in his structure and skeleton. Eye pigment enthusiasts should gravitate to this one early. A true female maker! His mother is a freckle-faced, young King Ten X 028X daughter who excels in all of the essential traits that we think drive profitability.												
42	WS PROMINENT K27 N101 44682998	Polled	3/20/2025	WS PROMINENT 21G K27 ET WS GRAND MARKETTA 644 1108 (14)	80	619	0 / 0	-1.4 67	5.5 0.61	60 0.00	105 354	17 111
Maternal function. Our main emphasis when breeding cattle. N101 has a mother that we believe is the type more breeders should be flushing. 1108 has been our only donor cow for two years. She is our oldest cow at almost 15 and has never missed a calf. Her mother lived to be 16 and never missed a calf. Fertility, Longevity, Profitability. N101 will be her last natural calf.												
43	WS RANCHER 763K N104 44683288	Polled	3/20/2025	KJ F31 RANCHER 763K WS QUEEN TEN G46 K142 (3)	81	638	100 / 100	5.5 57	2.0 0.36	50 -0.03	86 455	29 72
This Rancher X King Ten son is bred for the commercial cattlemen focused on quality and profit drivers. N104 is a stout, thick-made 763K with more length and an athletic, durable design. One of our phenotypic favorites! Mother is 100% Wiese Bloodlines.												
44	WS PROMINENT J121 N112 44683307	Polled	3/21/2025	WS PROMINENT 21G J121 WS MISS SENSATION 028X G22 (6)	83	714	100 / 100	-4.7 76	5.0 0.66	68 0.38	110 450	26 136
Performance Pays! We think this bull will have calves that crush the scales. Extra depth of body and thick-ended, yet really flexible in motion and striking in his look. We think this may be the best J121 son to date and have really high hopes for this one. 3rd Highest Weaning Weight in the calf crop!												
45	WS PROMINENT L55 N115 44683324	Polled	3/22/2025	WS PROMINENT 21G L55 WS GRAND DUCHESS D635 J84 (4)	84	704	60 / 80	-3.7 93	5.0 0.42	64 0.45	103 421	30 161
Marbling is a big topic in the seedstock industry and we think it is important. However, we cannot sacrifice functional traits for it. L55 is a great sire for injecting marbling without losing sight of maternal function. N115 is an excellent example of his first calf crop. Dark red and versatile. J84 is a great mother that is highly productive. Top Udder, Teat, Carcass Weight, \$CHB epds in this bull.												
46	WS PROMINENT L55 N118 44683339	Polled	3/22/2025	WS PROMINENT 21G L55 WS MISS LONG HAUL 36E J08 (4)	84	672	20 / 80	1.8 78	1.9 0.26	57 0.34	94 488	27 143
This bull does everything right. We really love his structure and profile. Excellent foot quality and dark cherry red. He is a huge scrotal bull with a high \$BMI index that should lead to fertile, long-lasting baldy females that the industry cannot get enough of. †												
47	WS PROMINENT 21G N119 44683349	Homozygous Polled	3/22/2025	JDH AH PROMINENT 21G ET WS VICTORIA 06A E22 (8)	107	544	0 / 0	-2.7 71	5.2 0.52	61 0.22	94 418	13 141
N119 is thick, moderate, and only getting better and better. We love the angles of his skeleton and his mother and sire both have perfect feet. This bull combines a negative DMI and low Milk figures that should attract low-cost, grazing-focused cattle operations.												

PRIVATE TREATY *Bulls*

48

NAME Registration #	Status	DOB	Sire Dam (Dam's Age)	BWT	205	Pigment	CE CW	BWT REA	WWT MARB	YWT \$BMI	MM \$CHB
WS ENTRUST 7522 N120 44683412	Polled	3/22/2025	R ENTRUST 7522 WS MISS BATTLE 120 G68 (6)	88	641	100 / 100	-1.0 64	3.3 0.22	58 0.04	101 407	35 92

Producers that like length and growth should take a look. N120 is exactly the performance bull to make calves that have some extra gas in the tank to really perform in the feedyards. Large finish weights and carcass weights are undeniable in the current beef industry. It only helps that his mother has been a reliable, consistent producer for us.

49

WS RANCHER 763K N123 44683420	Polled	3/22/2025	KJ F31 RANCHER 763K WS MISS PROMINENT 21G J22 (4)	82	671	100 / 100	7.9 63	1.6 0.76	56 0.29	94 467	30 124
---	--------	-----------	--	----	-----	-----------	-----------	-------------	------------	-----------	-----------

We love this bull! One of the very best Rancher sons. Rancher was bred to a lot of our 21G daughters and that mating flat out worked. † N123 has a stacked pedigree of great cows and is definitely the type of bull to make fancy replacements. Horned bull with great pigment! Balanced Phenotype and Genotype.

50

WS PROMINENT K27 N131 44683456	Polled	3/23/2025	WS PROMINENT 21G K27 ET WS QUEEN TEN 8200 D77 (9)	89	619	100 / 100	-3.5 72	4.0 0.61	52 0.21	81 391	27 126
--	--------	-----------	--	----	-----	-----------	------------	-------------	------------	-----------	-----------

This bull has exploded after weaning and keeps packing on the pounds. His mother, D77, is the mother of our herd bull K46. Full goggled-eye pigment, dark red, and excellent structural integrity. Herd-improving Teat and Udder EPDs.

51

WS ENTRUST 7522 N133 44683458	Polled	3/23/2025	R ENTRUST 7522 WS FORTRESS F18 J206 (4)	99	653	100 / 100	-2.0 77	2.9 0.44	60 0.10	100 502	34 118
---	--------	-----------	--	----	-----	-----------	------------	-------------	------------	------------	-----------

A big growth, performance-focused Entrust son with some added length. His extra weight and stretch stem back to his highly productive dam, J206, who is a direct daughter of one of our best cows, E181. Extra pounds and future daughters that can be revenue generators: what more could you want!

52

WS PROMINENT J121 N134 44683459	Homozygous Polled	3/23/2025	WS PROMINENT 21G J121 WS QUEEN TEN 3300 G55 (6)	108	661	0 / 0	-10.0 83	8.0 0.59	67 0.29	110 319	27 141
---	----------------------	-----------	--	-----	-----	-------	-------------	-------------	------------	------------	-----------

If you can tolerate some birthweight, this may be the best bull in the entire offering. N134 is so dense and thick with a big, soggy sweep to his ribcage. Incredible performance and mass. We are heavily considering his mother, G55, as our next donor cow and her calf prior to this son was our very best heifer in the calf crop.

53

WS RANCHER 763K N142 44683594	Homozygous Polled	3/24/2025	KJ F31 RANCHER 763K WS QUEEN TEN E213 J83 (4)	76	561	100 / 100	6.4 59	0.0 0.83	44 0.13	70 368	18 109
---	----------------------	-----------	--	----	-----	-----------	-----------	-------------	------------	-----------	-----------

N142 is the type of bull that can go to work and not drive the cost of production up. He stands with a more moderate frame size and pairs that will have low DMI and Milk figures that should work for producers who focus on grazing forage. † Great eye pigment with a pedigree of long-lasting cows. Homozygous Polled!

54

WS PROMINENT J48 N143 44683624	Polled	3/24/2025	WS PROMINENT 21G J48 WS QUEEN TEN 3300 G59 (6)	99	619	0 / 0	-3.2 90	6.4 0.41	60 0.54	93 433	20 177
--	--------	-----------	---	----	-----	-------	------------	-------------	------------	-----------	-----------

This guy is a phenotypic stud with some added carcass merit. This bull is flawless in his build and appearance. Added stoutness and hip. Our 2nd-highest \$CHB indexing bull. An excellent option for producers planning on feeding out calves and selling them in a grid-based marketing system.

55

WS HIGH NOON 2253 N147 44683682	Horned	3/24/2025	BUFORD 2253 ET WS MISS PROMINENT 21G K111 (3)	84	631	100 / 100	3.3 67	3.2 0.60	58 0.42	94 492	31 144
---	--------	-----------	--	----	-----	-----------	-----------	-------------	------------	-----------	-----------

A good doin', range bull. This Horned bull is precisely why we integrated High Noon sires into our breeding program: consistent and no-nonsense. We love his rugged design with long-lasting foot shape and leg confirmation. His mother is a 21G daughter out of our very popular 5213 cow. Longevity, Balance, Tradition. Our kind!

PRIVATE TREATY *Bulls*

56

WS RANCHER 763K N151 44683698	Homozygous Polled	3/25/2025	KJ F31 RANCHER 763K WS MISS PROMINENT 21G J72 (4)	82	661	100 / 100	9.0	1.8	64	109	31
							82	0.87	0.11	498	139
A Maternal Powerhouse. This is one of our very favorite Rancher x Prominent sons. If you are looking to make females, this bull is about as good as it gets. The three cows on the bottom side of his pedigree are all still in production and some of our very best producers. Strong EPD profile, strong phenotype, strong cow family. A do-it-all bull!											

57

WS PROMINENT K46 N152 44683701	Polled	3/25/2025	WS PROMINENT 21G K46 WS QUEEN TEN 511 G56 (6)	82	605	40 / 100	3.0	2.5	46	75	31
							72	0.43	0.32	447	133
A big-bodied, ideal-framed bull that will thrive on grass. N152 is the result of complementary breeding between his sire and dam and worked exactly as we hoped. His mother, G56, is the broody, hard-working type that never causes issues and pays the bills. This bull can work in many different scenarios.											

58

WS PROMINENT J48 N158 44684323	Polled	3/27/2025	WS PROMINENT 21G J48 WS QUEEN TEN 511 G148 (6)	86	572	100 / 0	-2.2	4.3	58	93	15
							90	0.60	0.31	400	168
This rascal is big-footed, moderate-framed, and exploded with gains after weaning. He has the good-doin body type with the right EPD profile to work in a forage-based operation that values low-input genetics. Extra marbling and \$CHB is only an added bonus.											

59

WS PROMINENT L55 N159 44684324	Polled	3/27/2025	WS PROMINENT 21G L55 WS QUEEN TEN 511 J27 (4)	88	591	0 / 0	-0.3	3.1	44	68	29
							62	0.15	0.25	461	104
This bull has a timeless pedigree filled with a lot of Wiese cows that lasted forever. In fact, his maternal granddam 0202 lived to be 14 and weaned 13 calves. His dam, J27, is one of our favorite coming 6-year-olds. This bull excels in all things that made this Hereford breed so great!											

60

WS PROMINENT J48 N160 44684328	Polled	3/27/2025	WS PROMINENT 21G J48 WS MISS BATTLE 120 F166 (7)	94	601	40 / 100	-7.5	5.8	53	90	27
							66	0.29	0.28	313	126
N160 is dense and full of meat and muscle. We love bulls that provide extra substance and capacity. He checks that box. We really pride ourselves on good-footed cattle and this bull is what we want to send to customers. The 21G sire on Battle cows has been one of our most reliable over the past few years.											

61

WS PROMINENT K27 N162 44684362	Polled	3/28/2025	WS PROMINENT 21G K27 ET WS FORTRESS 1312 F15 (7)	99	666	100 / 100	-3.8	4.9	53	88	33
							64	0.48	-0.02	294	94
Extra Eye Pigment and Performance! This is precisely the kind of Hereford bull to go out and make baldy calves on black hided cows. This bull summered on fescue grass with no creep and only continues to impress us. His mother, F15, has consistently weaned off some of our heaviest calves.											

62

WS RANCHER 763K N163 44684365	Polled	3/28/2025	KJ F31 RANCHER 763K WS MISS PROMINENT 21G K68 (3)	87	638	80 / 80	2.6	4.7	68	119	31
							84	0.62	0.20	446	144
Another Rancher x Prominent bull that shows why we will keep breeding that mating for a long time. Bold ribbed and thick-ended. We love his mother so much that we took her to the Iowa Beef Expo to represent our program. Extra growth in his EPD profile complements his maternal backing to make great daughters.											

63

WS PROMINENT L55 N166 44684386	Polled	3/29/2025	WS PROMINENT 21G L55 WS MISS LONG HAUL 36E J13 (4)	76	564	60 / 60	7.8	-0.6	48	70	33
							68	0.40	0.43	462	132
This L55 son is meant to go make fancy replacement females. N166 is a heifer-safe option that blends the right kind of frame size in an easy-doing package. He is in the top 1% of the breed for Teat and Udder EPDs and combines that with some added Marbling. He is built to last many seasons of service breeding females!											

PRIVATE TREATY *Bulls*

64

NAME Registration #	Status	DOB	Sire Dam (Dam's Age)	BWT	205	Pigment	CE CW	BWT REA	WWT MARB	YWT \$BMI	MM \$CHB
WS PROMINENT J121 N168 44684394	Polled	3/29/2025	WS PROMINENT 21G J121 WS MISS BATTLE 4139 F100 (7)	99	637	100 / 100	-5.9 85	5.6 0.66	67 0.27	108 358	22 144

We love this bull's pedigree! J121 has been a great 21G son, and this bull's mother, F100, is ahead of her time. She blends the right kind of lower mature cow size with the ability to raise a big calf year in and year out. N168 has added length and growth with excellent feet and structure. A dual-purpose bull to make great females and feeders!

65

WS HIGH NOON 2253 N169 44684397	Horned	3/29/2025	BUFORD 2253 ET WS MISS LONG HAUL 36E J14 (4)	87	644	0 / 100	8.3 80	3.9 0.51	61 0.44	106 514	36 162
---	--------	-----------	---	----	-----	---------	-----------	-------------	------------	------------	-----------

This is a sale highlight! N169 is an exciting outcross bull with High Noon and Long Haul blended into our King Ten bloodlines. This dark red, horned bull has a big scrotal and extra stoutness. His EPD profile does not have a flaw to it, but most importantly, his phenotype is excellent too! We are really high on this one!

66

WS RANCHER 763K N170 44684403	Polled	3/30/2025	KJ F31 RANCHER 763K WS FORTRESS F18 J52 (4)	99	725	100 / 100	-4.0 91	5.8 1.25	71 0.00	124 490	39 145
---	--------	-----------	--	----	-----	-----------	------------	-------------	------------	------------	-----------

Our top growth and muscle bull! N170 had the Heaviest Weaning Weight of the entire 2025 calf crop. He combines all of the great phenotypic qualities of Rancher and adds some extra size and growth. Masculine, Big-hipped, and Scale Crushing. He will generate revenue for anyone selling by the pound!

67

WS PROMINENT 21G N171 44684406	Polled	3/30/2025	JDH AH PROMINENT 21G ET WS GRAND MARKETTA 4190 F84 (7)	83	609	100 / 100	4.7 77	1.2 0.38	55 0.67	89 512	22 177
--	--------	-----------	---	----	-----	-----------	-----------	-------------	------------	-----------	-----------

This bull is one that needs to be studied. N171 is the epitome of balanced-trait breeding. We love his side profile and attention-grabbing look. He has the great feet and legs that Prominent always injects into his progeny. His mother is a broody cow that always weans off a nice calf. Elite \$BMI and \$CHB indices. He will propel a cowherd forward!

68

WS PROMINENT K46 N175 44684442	Polled	3/31/2025	WS PROMINENT 21G K46 WS QUEEN TEN 113 G151 (6)	92	597	100 / 100	-5.6 73	5.4 0.37	55 0.29	83 352	23 132
--	--------	-----------	---	----	-----	-----------	------------	-------------	------------	-----------	-----------

A kind of bull that is not extreme in any one particular trait, but good at any and all of them. Females should be easy doin and long-lasting. N175 summered at our Guthrie Center division with no creep feed. Low DMI epd to decrease cost with adequate growth data to maintain revenue. Simple Economics!

69

WS PROMINENT K27 N184 44684508	Homozygous Polled	4/2/2025	WS PROMINENT 21G K27 ET WS VICTORIA 06A E13 (8)	91	598	0 / 0	-4.0 60	4.3 0.63	56 0.11	90 388	16 107
--	----------------------	----------	--	----	-----	-------	------------	-------------	------------	-----------	-----------

This K27 son is younger than most, but keeps getting better and better. N184 stems from a beautiful cow, E13, who has a near-perfect udder and is a direct daughter of an old donor cow, 253. Great structure and skeletal design. Homozygous Polled!

70

WS PROMINENT J48 N186 44684595	Homozygous Polled	4/3/2025	WS PROMINENT 21G J48 WS QUEEN TEN 3300 D247 (9)	91	642	0 / 0	-4.4 87	5.3 0.54	64 0.35	102 431	18 155
--	----------------------	----------	--	----	-----	-------	------------	-------------	------------	------------	-----------

N186 is out of our Marbling Queen, D247. She has injected carcass merit into her calves without losing sight of maternal quality. This bull is big-footed, rugged, and comes with extra depth of body. We sold a full brother last year that was incredible. This mating continues to knock it out of the park!

71

WS ENTRUST 7522 N188 44684598	Polled	4/4/2025	R ENTRUST 7522 WS MISS BATTLE 120 J29 ET (4)	83	576	100 / 0	0.3 63	1.9 0.38	53 0.27	86 377	25 115
---	--------	----------	---	----	-----	---------	-----------	-------------	------------	-----------	-----------

Our April-born bulls have us really excited this year. Although they are younger than most seedstock operation bulls, they calve in-synch with nature and the cows have to go to work. N188 has a bright future. Excellent mother cow, J29, that is a direct daughter of our old donor cow 2250. Sound, versatile, and ready to make great F1 Baldies!

	NAME Registration #	Status	DOB	Sire Dam (Dam's Age)	BWT	205	Pigment	CE	BWT	WWT	YWT	MM
								CW	REA	MARB	\$BMI	\$CHB
72	WS RANCHER 763K N189 44684599	Polled	4/7/2025	KJ F31 RANCHER 763K WS MISS PROMINENT 21G K57 (3)	74	708	100/ 100	7.6 84	1.2 0.73	56 0.51	88 543	37 162
Absolutely Incredible! N189 has been the bull that everyone has identified on tours this year. We kept a full brother last year to breed our own cows and we think this bull is even better. Dark red with extra pigment, thick-ended yet elegant in motion, and best of all, his mother is our very favorite coming 4-year-old. Seedstock breeders take note!												
73	WS PROMINENT K46 N191 44684603	Homozygous Polled	4/7/2025	WS PROMINENT 21G K46 WS REBELLA 73Z 5194 (10)	103	683	100/ 100	-6.8 79	7.7 0.44	68 0.26	108 333	24 139
This bull is exactly what the Midwest cattle producers want. Performance and growth with the ability to still make daughters. N191 has very good length and extra muscle shape. His mother is a daughter of 1152, which is one of our very favorite cow families. Feedlots should bid high and often on feeder calves from this bull.												
74	WS HIGH NOON 1205 N196 44684616	Horned	4/10/2025	BUFORD BLUESTEM 1205 ET WS QUEEN TEN 511 K51 (3)	88	697	100/ 100	-4.0 64	3.4 0.30	52 0.31	89 379	28 123
He is as traditional of a Hereford as we can make them. This horned bull is smooth-shouldered and great in his joints and skeleton. Young, but ratioed a weaning weight of almost 700 pounds. High Noon on King Ten cows would make our Grandpa Gene proud!												
75	WS PROMINENT J121 N198 44684623	Homozygous Polled	4/11/2025	WS PROMINENT 21G J121 WS QUEEN TEN 3300 F257 (7)	87	680	0/100	-3.5 76	3.8 0.49	55 0.48	95 391	32 140
Phenotype, Genotype, and out of one of our best King Ten cows. N198 is homozygous polled with all the right pieces in his appearance. We love his rugged look with extra muscle shape and masculinity. His mother is planned to become our next donor cow after 1108 finishes up her career. He fulfills our mission to raise balanced trait cattle with customer profitability in mind.												
76	WS ENTRUST 7522 N201 44684640	Homozygous Polled	4/12/2025	R ENTRUST 7522 WS GRAND DUCHESS D635 K38 (3)	64	623	100/ 100	8.9 53	-1.4 -0.03	45 0.10	75 302	27 84
The youngest heifer bull in the offering. His moderation and size may allow him to cover heifers for longer than most breeding bulls. Full eye pigment with a great, easy-going body type. His mother keeps mature cow size low and weans off a large proportion of her body weight. Efficiency at its finest!												
77	WS PROMINENT K27 N203 44684648	Homozygous Polled	4/12/2025	WS PROMINENT 21G K27 ET WS FORTRESS 1312 E48 (8)	91	681	100/ 100	-1.8 70	3.6 0.49	54 0.25	93 433	29 126
Young bulls can sometimes get overlooked, but we are confident this one will go fast. Homozygous polled with one of the best adjusted weaning weights. Excellent herd bull presence with freckles and pigment. N203 will add pounds on the scale whenever you market your cattle. Performance Still Pays.												
78	WS PROMINENT 21G N206 44684666	Polled	4/14/2025	JDH AH PROMINENT 21G ET WS QUEEN TEN 3187 E122 (8)	90	569	0/80	-3.4 75	3.7 0.49	53 0.32	77 410	19 145
N206 is perfect to go breed black-hided cows and make sale-topping F1 Baldies! This red-necked bull has extra length and shape. His Prominent x King Ten pedigree will be a common one throughout our cowherd for many years to come. Generations of diligent breeding and long-lasting cows.												
79	WS HIGH NOON 1205 N207 44684669	Polled	4/21/2025	BUFORD BLUESTEM 1205 ET WS QUEEN TEN G139 K157 (3)	86	632	100/ 100	-3.0 84	4.1 0.83	57 0.19	97 367	29 143
Traditional Hereford enthusiasts take a look. This bull will thrive in a large pasture and get after the breeding season. We love his big feet and excellent structure paired with great fleshing ability. Short marked and excellent eye pigment. Dave Wiese loves this one!												
80	WS HIGH NOON 1205 N208 44684673	Horned	4/21/2025	BUFORD BLUESTEM 1205 ET WS QUEEN TEN 511 K133 (3)	89	644	100/ 100	-1.1 71	4.4 0.44	52 0.23	79 353	24 129
If we had a pen full of bulls like N208, we would certainly be happy. This bull does everything we value correctly: sound in his skeleton, the right amount of muscle, masculine, and out of a hard-working cow. A horned bull with plenty of performance and a bright future ahead.												
81	WS PROMINENT L25 N209 44684681	Horned	4/24/2025	WS PROMINENT 21G L25 ET WS VICTORIA E187 J183 (4)	72	638	80/100	1.7 73	3.6 0.41	56 -0.09	85 346	21 100
The only L25 son in the sale group and we are really excited to get more calves this next spring after raising this stud. Excellent phenotype without a flaw. Very thick and will only get better as he matures. No other way to describe him, he is a Good Doin Bull.												

Annual **ANGUS & FEMALE** *Offering*

Private Treaty Angus Bulls

While our primary focus always has been and will be the Hereford bull, we also take pride in offering top-quality registered Angus bulls every year. As of 2019, we've worked with Buford Ranches from Welch, OK, as our Angus genetics supplier. Viewed as one of the nation's premier Angus and Commercial operations, their bulls and females are run in rugged cattle country. Combining structurally correct performance-driven sires with proven maternal-based cow families. We trust these genetics as if they were our own and utilize them to service both our replacement heifers and commercial Hereford cow herd. If interested, please get in touch with us well in advance and we'll be sure to account for your inquiry when shipping in bulls, typically mid to late Spring.

Annual Female Offering

In addition to bulls, we'll offer sets of high-quality, commercially focused Hereford and F1 open and bred females annually. Whether you're seeking a single individual or an entire group, these females come from the heart of our program and raised just like our registered herd. Not only are these individuals backed by decades of data collection and productive cow lines, but to add further value, we can also group packages based on age, uniformity, and expected calving dates. Lastly, we breed many of these individuals to registered Angus bulls, capitalizing on hybrid vigor. As a result, you can expect their highly sought-after F1 Baldy calves to command top dollar when it comes time to sell. If interested, please get in touch with us and we'll do our very best to supply those who inquire. If we cannot fulfill specific orders, we'll try connecting you with customers who utilize Wiese-influenced genetics.



ADD VALUE

WITH FEEDER CATTLE & REPLACEMENT FEMALE PROGRAMS



HEREFORD ADVANTAGE

An industry-changing feeder cattle marketing program through IMI Global to verify and add value to Hereford-influenced feeder cattle with superior genetics, health and management.



MATERNAL ADVANTAGE

A unique marketing program designed to add value to Hereford-sired commercial replacement females with added fertility, feed efficiency, profitability and docility.



PREMIUM RED BALDY

Take advantage of hybrid vigor by maximizing the best traits of Hereford and Red Angus genetics that provide commercial producers with premium replacement females.



LEARN MORE ABOUT
THESE PROGRAMS



AMERICAN HEREFORD ASSOCIATION

816.842.3757 | WWW.HEREFORD.ORG



Thank You.

Thank you for your support!
We appreciate your business.
- The Wiese Family

WIESE & SONS

31554 DELTA AVE.
MANNING, IA 51455



WWW.WIESEANDSONS.COM