



**Mid-Atlantic**

*Spring Bonanza*  
**Sale**

**Thursday, *April 17, 2025* · 12:30 p.m.**

**Rockingham County Fairgrounds • Harrisonburg, VA  
In Conjunction with the Virginia Beef Expo**



# Mid-Atlantic

# Spring Bonanza Sale

**Thursday, April 17, 2025 • 12:30 p.m.  
Rockingham County Fairgrounds • Harrisonburg, VA**

### Auctioneer

Dale Stith ..... 918-760-1550 Cell  
Sale Day Phone ..... 540-333-1019

### Representatives

Dave McMurrer ..... 703-609-1442  
Charles Strickler ..... 540-923-4717  
Tommy Coley ..... 815-988-7051  
Tommy Carper ..... 540-336-2737

### Lunch will be available

### Insurance

Available through Cattlemen’s Insurance Agency.



Please scan the QR code or visit with one of the clerks for assistance.

### Directions

From I-81 use Exit 243, turn left on Route 11, south 1 mile to Rockingham County Fairgrounds on right.

### Motels

Tru by Hilton ..... 540-385-0222  
The Village Inn ..... 540-434-7355  
Super 8 ..... 540-433-8888  
Country Suites ..... 540-433-2400  
Hampton Inn ..... 540-437-0090

### Trucking

Every effort will be made to help you get your animals transported.

### Sale Contact

Rodney Phillips ..... 804-387-9447

### Sale Day Phones

Rebecca Webert ..... 540-333-1019

### Online Bidding

Live internet bidding will be available through SaleRing.Live. You can register online at [www.salering.live](http://www.salering.live). Please see page 14 for more information, or visit the Virginia Beef Expo website at [www.vabeefexpo.com](http://www.vabeefexpo.com) or the Virginia Hereford Association website at [www.vahereford.org](http://www.vahereford.org).



### Please Note —

**All cattle must be removed from the barns by 6 p.m. on April 17th**

# Support the Virginia Junior Hereford Association

## Embryo Packages

Thank you Harry Taylor for your generous donation!

### Lot 1

**LOT 1A** FIVE (5) GRADE ONE EMBRYOS

**LOT 1B** FOUR (4) GRADE TWO EMBRYOS

HYALITE ON TARGET 936 (S00){(DLF,HYF,IEF,MSUDF)}  
**R LEADER 6964** (S00){(DLF,HYF,IEF,MSUDF,DFB)}  
 P43500058 R MISS REVOLUTION 1009 (D00){(DLF,HYF,IEF,DFB)}

SCHU-LAR ON TARGET 22S (S00){(CHB)}{(DLF,HYF,IEF,MSUDF,MDF,DFB)}  
 HYALITE TS LASS 310 (DLF,HYF,IEF)  
 MSU TCF REVOLUTION 4R (S00){(DLF,HYF,IEF,MDF,DFB)}  
 R MISS WRANGLER 3007

DR WORLD CLASS 517 10H (S00){(DLF,HYF,IEF)}  
**DR LADY OF CLASS 10H S08** (DLF,HYF,IEF,MSUDF)  
 P42686849 DR LADY LUCK 8020 P01 (D00)

FELTONS 517 (S00){(DLF,HYF,IEF,MSUDF)}  
 VPI MARATHON LADY 0081  
 OXH MARK DOMINO 8020 (S00){(DLF,IEF)}  
 DR STYLE & SUBSTANCE LOZ



R LEADER 6964 — Sire of Lot 1 Embryos

	CE	BW	WW	YW	SCF	MM	M&G	MCW
<b>Sire:</b>	6.2	2.0	68	103	21.7	22	56	102
<b>Dam:</b>	-0.9	3.1	65	102	22.5	40	73	98
	UDDR	TEAT	FAT	REA	MARB	BMIS	CHBS	
<b>Sire:</b>	1.30	1.40	0.083	0.42	0.09	422	104	
<b>Dam:</b>	1.40	1.50	-0.037	0.38	-0.07	443	105	

### Lot 2

**LOT 2A** THREE (3) GRADE ONE EMBRYOS

**LOT 2B** THREE (3) GRADE ONE EMBRYOS

**LOT 2C** ONE (1) GRADE 1 AND TWO (2) GRADE 2 EMBRYOS

SHF WONDER M326 W18 ET (S00){(CHB)}{(DLF,HYF,IEF,MDF,DFB)}  
**NJW 73S W18 HOMEGROWN 8Y ET** (S00){(DLF,HYF,IEF,MSUDF,MDF,DFB)}  
 P43214852 NJW P606 72N DAYDREAM 73S (DLF,HYF,IEF,MSUDF,MDF)

KCF BENNETT 3008 M326 (S00){(CHB)}{(DLF,HYF,IEF,MDF,DFB)}  
 SHF GOVERNESS 236G L37 (DLF,HYF,IEF,MDF,DFB)  
 PW VICTOR BOOMER P606 (S00){(DLF,HYF,IEF,MDF)}  
 NJW 941 DEW 72N (DLF,HYF,IEF)

DR WORLD CLASS 517 10H (S00){(DLF,HYF,IEF)}  
**DR LADY OF CLASS 10H S08** (DLF,HYF,IEF,MSUDF)  
 P42686849 DR LADY LUCK 8020 P01 (D00)

FELTONS 517 (S00){(DLF,HYF,IEF,MSUDF)}  
 VPI MARATHON LADY 0081  
 OXH MARK DOMINO 8020 (S00){(DLF,IEF)}  
 DR STYLE & SUBSTANCE LOZ



NJW 73S W18 HOMEGROWN 8Y ET — Sire of Lot 2 Embryos

	CE	BW	WW	YW	SCF	MM	M&G	MCW
<b>Sire:</b>	7.9	2.7	56	95	12.5	44	72	110
<b>Dam:</b>	-0.9	3.1	65	102	22.5	40	73	98
	UDDR	TEAT	FAT	REA	MARB	BMIS	CHBS	
<b>Sire:</b>	1.00	1.00	0.043	0.50	0.00	316	134	
<b>Dam:</b>	1.40	1.50	-0.037	0.38	-0.07	443	105	



DR LADY OF CLASS 10H S08 — Dam of Lots 1, 2 and 3

**LOT 3** THREE (3) GRADE ONE CONVENTIONAL EMBRYOS

LJR 023R WHITMORE 10W (S00){(DLF,HYF,IEF,MSUDF,MDF,DFB)}  
**NJW 160Z 10W WHIT 33B** (S00){(DLF,HYF,IEF,MSUDF,MDF,DFB)}  
 P43483059 NJW 73S 88X DAYDREAM 160Z (D00){(DLF,HYF,IEF,MSUDF,MDF)}

KJ C&L J119 LOGIC 023R ET (S00){(DLF,HYF,IEF,MDF,DFB)}  
 LJR MICKEY 278N (D00){(DLF,HYF,IEF)}  
 NJW 98S R117 RIBEYE 88X ET (S00){(DLF,HYF,IEF,MSUDF,MDF,DFB)}  
 NJW P606 72N DAYDREAM 73S (DLF,HYF,IEF,MSUDF,MDF)

DR WORLD CLASS 517 10H (S00){(DLF,HYF,IEF)}  
**DR LADY OF CLASS 10H S08** (DLF,HYF,IEF,MSUDF)  
 P42686849 DR LADY LUCK 8020 P01 (D00)

FELTONS 517 (S00){(DLF,HYF,IEF,MSUDF)}  
 VPI MARATHON LADY 0081  
 OXH MARK DOMINO 8020 (S00){(DLF,IEF)}  
 DR STYLE & SUBSTANCE LOZ

	CE	BW	WW	YW	SCF	MM	M&G	MCW
<b>Sire:</b>	1.4	4.6	67	104	25.0	33	67	123
<b>Dam:</b>	-0.9	3.1	65	102	22.5	40	73	98
	UDDR	TEAT	FAT	REA	MARB	BMIS	CHBS	
<b>Sire:</b>	1.40	1.30	-0.037	0.34	-0.13	469	94	
<b>Dam:</b>	1.40	1.50	-0.037	0.38	-0.07	443	105	



NJW 160Z 10W WHIT 33B — Sire of Lot 3 Embryos





DTF PRESTIGE 33Z 1J38 ET — Sire of Lot 4



KCF BENNETT MONUMENT J338 — Sire of Lot 5

**LOT 4**  
**SEMEN**  
AHAA  
GE-EPD

30 UNITS OF SEMEN OUT OF  
**DTF PRESTIGE II 1J38 3L26** {DLF,HYF,IEF,MSUDF}

P44529500 — Calved: 9/7/23 — Tattoo: RE DTF/LE 3L26

JDH VICTOR 719T 33Z ET (S00)(CHB)(DLF,HYF,IEF,MSUDF,DFB) TH 122 7H VICTOR 719T (S00)(DLF,HYF,IEF,MSUDF,DFB,DFP)  
DTF PRESTIGE 33Z 1J38 ET (CHB)(DLF,HYF,IEF,MSUDF,DFB,DFP) JDH MS YANKEE 11U ET (DLF,HYF,IEF,DFP)  
P44310485 DTF VANITY 0091 2Z37 (DLF,HYF,IEF) BOYD NIW STAND OUT 0091 ET (S00)  
DTF DONNA ANNA 5L0X48 DTF DONNA ANNA 5L0X48

INNISFAIL WHR X651/723 4013 ET (S00)(CHB)(DLF,HYF,IEF,MSUDF,DFB,DFP) EFBEEF TFL U208 TESTED X651 ET (S00)(CHB)(DLF,HYF,IEF,MSUDF)  
DTF SOLARA 4013 9627 (DLF,HYF,IEF,MSUDF,DFB,DFP) INNISFAIL P230 T23 (DLF,HYF,IEF,MSUDF)  
P44105322 DTF BRIGHT ANGEL 936 6D47 (DLF,HYF,IEF,MSUDF,DFB,DFP) HYALITE ON TARGET 936 (S00)(DLF,HYF,IEF,MSUDF)  
DTF TRINITY 0091 2Z53 (000)(DFP)

CE	BW	WW	YW	SCF	MM	M&G	MCW
3.5	2.1	70	106	20.6	29	64	107
UDDR	TEAT	FAT	REA	MARB	BMI\$	CHB\$	
1.30	1.20	0.033	0.42	0.29	425	133	

• PRESTIGE is an outstanding bull. Too dark to be called dark red, he is nearly black, so I'll use mahogany. Red necked with goggle eyes. Cosmetics leave nothing to be desired. His GE EPDs are outstanding. All the characteristics of a great phenotype are his. I used him on 12 of my fall cows and heifers this past fall. Look at him and visualize what he will add to your calf crop. Don't miss this opportunity. You will have to look long and hard to find a bull to match him. We are offering thirty straws of semen three canes of ten. Here is your opportunity to be on the front end of an exceptional bull.

Consigned by: Deer Track Farm, Bob Schaffer, 540-661-2230

**LOT 5**  
**SEMEN**  
AHAA  
GE-EPD

30 UNITS OF SEMEN OUT OF  
**DTF DAUNTLESS J338 4M03** {DLF,HYF,IEF,MSUDF}

P44583398 — Calved: 1/29/24 — Tattoo: RE DTF/LE 4M03

KCF BENNETT B716 F597 (CHB)(DLF,HYF,IEF,MSUDF,DFB,DFP) KCF BENNETT DEVOUT B716 ET (S00)(DLF,HYF,IEF,MSUDF,DFB,DFP)  
KCF BENNETT MONUMENT J338 (DLF,HYF,IEF,MSUDF,DFB,DFP) KCF MISS REVOLUTION X322 ET (S00)(DLF,HYF,IEF,MSUDF,DFB,DFP)  
P44320126 KCF MISS LANDMARK G301 (DLF,HYF,IEF,MSUDF,DFB,DFP) R LANDMARK 4386 (S00)(CHB)(DLF,HYF,IEF,MSUDF,DFB,DFP)  
KCF MISS CUDA E368 (DLF,HYF,IEF)

KCF BENNETT ENCORE Z311 ET (S00)(CHB)(DLF,HYF,IEF,MSUDF,DFB,DFP) SCHU-LAR ON TARGET Z25 (S00)(CHB)(DLF,HYF,IEF,MSUDF,DFB,DFP)  
DTF MARTHA Z311 7E56 (DLF,HYF,IEF,MSUDF,DFB,DFP) KCF MISS REVOLUTION X338 ET (DLF,HYF,IEF,DFP)  
P43886347 DTF JOLINE 4R 3A17 (DLF,HYF,IEF,DFP) MSU TCF REVOLUTION 4R (S00)(DLF,HYF,IEF,MSUDF,DFB,DFP)  
DTF PRETORIA 46B 320 ET (S00)(DLF,HYF,IEF)

CE	BW	WW	YW	SCF	MM	M&G	MCW
9.9	-1.7	73	112	21.9	45	81	64
UDDR	TEAT	FAT	REA	MARB	BMI\$	CHB\$	
1.30	1.40	0.083	0.96	0.74	498	207	

• Introducing DTF DAUNTLESS sired by Knoll Crest's KCF BENNETT MONUMENT J338. On his maternal side he has three generations of DTF dams. Dauntless has the potential to be a generational Hereford sire. His GE-EPDs are undeniably at the top of the breed. Cosmetics are dark red, short marked with both eyes pigmented. All the characteristics of a great phenotype are his. I'm truly excited by the potential Dauntless currently demonstrates. We are offering thirty straws of semen three canes of ten. Here is your opportunity to be on the front end of an exceptional bull.

Consigned by: Deer Track Farm, Bob Schaffer, 540-661-2230

# DEER TRACK FARM

## Bulls Worthy of Your Consideration

Selling 30 Straws of Semen



DTF Prestige II 1J38 3L26 - P44529500

CED	BW	WW	YW	Milk	M&G	MCE	SC
+3.4	+2.1	+70	+106	+29	+64	+3.6	+1.2
MCW	CW	Fat	REA	Marb	BMI\$	BIIS	CHB\$
+108	+79	+0.032	+0.41	+0.30	+418	+519	+134

Dam of DTF 3L26



DTF Solara 4013 9627

Visualize his calves in YOUR herd!

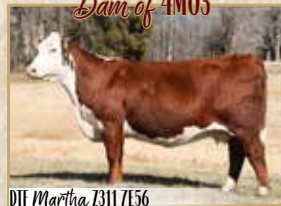
Selling 30 Straws of Semen



DTF Dauntless J338 4M03 - P44583398

CED	BW	WW	YW	Milk	M&G	MCE	SC
+9.5	-1.6	+74	+111	+44	+81	+9.0	+1.6
MCW	CW	Fat	REA	Marb	BMI\$	BIIS	CHB\$
+65	+105	+0.082	+0.92	+0.76	+498	+633	+207

Dam of 4M03



DTF Martha Z311 7E56

Generational Bull for the FUTURE!

DEER TRACK  
**DTF**  
ARM

Bob Schaffer, Owner-Manager  
Phone: 540.661.2229 • bob@deertrackfarm.com  
www.deertrackfarm.com



WHOLE HERD HAS GE-EPDS  
**AHAA**  
GE-EPD

## LOT 6 THREE (3) GRADE ONE SEXED FEMALE IVF EMBRYOS

**LOT 6 EMBRYOS**

TFR KU ROLL THE DICE 1326 (DLF,HYF,IEF,MSUDF,MDF,DBF)  
**CH HIGH ROLLER 756 ET** (DLF,HYF,IEF,MSUDF,MDF,DBF)  
 P43875385 CH MAGIE 0023 (DLF,HYF,IEF)

LCC FBF TIME TRAVELER 480 (DLF,HYF,IEF,MSUDF,MDF,DBF)  
**FBF 480 CAROLINE 2021** (DBP)  
 P44167732 FBF GEORGETTE 1817 ET

STAR TCF LOCK-N-LOAD 300W ET (CHB)(DLF,HYF,IEF,DBP)  
 LH LANGFORD LADY 0253 ET (DLF,HYF,IEF)  
 TFR HIGH COTTON 328 ET (SOD)(DLF,IEF)  
 CH GOLDEN CAT 4016 IE

RST TIMES A WASTIN 0124 (SOD)(DLF,HYF,IEF)  
 JB REMETEE 213 (DLF,HYF,IEF,DBP)  
 NIW 98S R117 RIBEYE 88X ET (SOD)(DLF,HYF,IEF,MSUDF,MDF,DBF)  
 SHF COVOTTE DONE (DLF,HYF,IEF,MDF,DBF)

	CE	BW	WW	YW	SCF	MM	M&G	MCW
<b>Sire:</b>	-9.1	6.1	71	110	14.1	39	74	120
<b>Dam:</b>	-2.7	5.4	64	102	.7	27	59	97
	UDDR	TEAT	FAT	REA	MARB	BMI\$	CHB\$	
<b>Sire:</b>	1.30	1.20	-0.017	0.69	-0.08	329	112	
<b>Dam:</b>	1.10	1.10	-0.037	0.62	0.05	273	129	



GOOD MISS MACY M1 — Full Sister to Lot 6 Embryos

- Big time opportunities here! Time to own full sib embryos to one of the most winningest Hereford's in Virginia, "Macy". She and her dam, Caroline, were named Supreme Champion Cow/Calf Pair at the Virginia Beef Expo where Macy was also Calf Champion. Macy was Champion Hereford at both our local county fairs this summer as a calf. She went on to the 2024 VA State Fair as Champion Hereford and 4th Overall Heifer in a very competitive drive. At the VCCP 2nd Wind show she was also champion Hereford in both ring A and B. She was Supreme Heifer and Champion Bred & Owned for Jack at the Mid-Atlantic Fall Round-Up. She went on to Louisville where she won her class and was Champion Bred & Owned in her division. At the Rising Star Jackpot Show, she won Champion Hereford in both ring A & B but went on to win Supreme Heifer in Ring A and was 4th Overall Heifer in Ring B.
- Caroline had a great show career for Jack as well with multiple Champion Hereford wins. The first calf to hit the ground out of Caroline, Felicia, also had a very successful show career for Jack by bringing home banners at several shows.

### Special Terms:

- All Packages of 3 Embryos will come with a guarantee of one 90 day pregnancy implanted by a certified veterinarian.

### Delivery Methods:

- Embryos are housed at TransOva Maryland.

Consigned by: *Begoon Farm, JT, Laura Begoon and Family, Grottoes, VA, 540-430-1716*



## LOT 7 CHF 132E PRINCESS 1061 (DBP)

**LOT 7 COW**

P44417643 — Calved: 2/23/21 — Tattoo: RE 1061

LIR 023R WHITMORE 10W (SOD)(DLF,HYF,IEF,MSUDF,MDF,DBF)  
**NJW 76C 10W WHITMORE 132E** (DLF,HYF,IEF,MSUDF,MDF,DBF)  
 P43830180 NIW 79Z 22Z RITA 76C ET (DOD)(DLF,HYF,IEF,MSUDF,MDF,DBF)

KJ C&L J119 LOGIC 023R ET (SOD)(DLF,HYF,IEF,MSUDF,MDF,DBF)  
 LJR MICKY 278N (DOD)(DLF,HYF,IEF)  
 NIW 67U 28M BIG MAX 22Z (DLF,HYF,IEF,MSUDF,MDF,DBF)  
 BW 91H 100W RITA 79Z ET (DLF,HYF,IEF,MSUDF,MDF,DBF)

STAR SHOCK WAVE 13Y ET (DLF,HYF,IEF,DBP)  
**CHF PRINCESS 3544 ET** (DBP)  
 P43408870 GLENVIEWS 6056 VICKY U37 (DLF,HYF,IEF,DBP)

STAR TCF SHOCK & AWE 158W ET (SOD)(DLF,HYF,IEF,DBP)  
 STAR 2013 CARA 112T (DLF,HYF,IEF)  
 THM SOLUTION 6056 (HYF)  
 GLENVIEW N1 PRINCESS 86S (HYF,DBP)

	CE	BW	WW	YW	SCF	MM	M&G	MCW
<b>0.6</b>	<b>3.8</b>	<b>60</b>	<b>90</b>	<b>19.7</b>	<b>27</b>	<b>56</b>	<b>110</b>	
	UDDR	TEAT	FAT	REA	MARB	BMI\$	CHB\$	
<b>1.30</b>	<b>1.20</b>	<b>-0.027</b>	<b>0.53</b>	<b>-0.14</b>	<b>396</b>	<b>95</b>		

- These Whitmore 132E daughters have made excellent cows for us. They have beautiful udders and great mothering ability. Sells with bull calf at side, Lot 7A, by Bar JZ On Demand born 2/12/25.

Consigned by: *Cottage Hill Farm, W. C. Taylor Family, Petersburg, WV, 304-257-0263 (David)*

## LOT 9 BCC STELLA 1187J (DLF,HYF,IEF,MSUDF,MDF)

**LOT 9 COW**

P44259880 — Calved: 3/13/21 — Tattoo: BE 1187

HILLS-GALORE 44Z RESOLUTE 128D (CHB)(DLF,HYF,IEF,MSUDF,MDF,DBF)  
**HCC RIO GRANDE 9101 G ET** (DLF,HYF,IEF,MSUDF,MDF,DBF)  
 P44078499 CHURCHILL LADY 002Z ET (DLF,HYF,IEF,MSUDF,MDF,DBF)

RST X51 REVOLUTION 410Z (CHB)(DLF,HYF,IEF)  
 HILLS-GALORE 52R CALLI 44Z (DLF,HYF,IEF,MSUDF,MDF,DBF)  
 GOLDEN OAK OUTCROSS 18U (SOD)(CHB)(DLF,HYF,IEF,MSUDF,MDF,DBF)  
 CHURCHILL LADY 600S ET (DLF,HYF,IEF,DBP)

LSW WCC ABOUT TIME X06 (DLF,HYF,IEF)  
**BCC MISS MABERRY 523C ET** (DLF,HYF,IEF,MSUDF,MDF,DBF)  
 P43823560 BCC MISS MABERRY 064X (DLF,HYF,IEF)

CRR ABOUT TIME 743 (SOD)(DLF,HYF,IEF,MDF)  
 WBCC WCC 69P MS RANGELAND U800 (DLF,HYF,IEF)  
 TFR HIGH COTTON 328 ET (SOD)(DLF,IEF)  
 BCC LI MEDORA 744 (HYF)

	CE	BW	WW	YW	SCF	MM	M&G	MCW
<b>3.0</b>	<b>1.9</b>	<b>54</b>	<b>98</b>	<b>14.3</b>	<b>33</b>	<b>60</b>	<b>97</b>	
	UDDR	TEAT	FAT	REA	MARB	BMI\$	CHB\$	
<b>1.30</b>	<b>1.30</b>	<b>-0.027</b>	<b>1.01</b>	<b>0.02</b>	<b>357</b>	<b>145</b>		

- We bought Stella 1187 for Baumgarten Cattle Co. and has been a very productive cow. She is long bodied and very growthy.
- Will calve by sale day to Green 11E Blueprint 102G.

Consigned by: *Cottage Hill Farm, W. C. Taylor Family, Petersburg, WV, 304-257-0263 (David)*

## LOT 8 CHF 815F BENNITA 1069

**LOT 8 COW**

P44417645 — Calved: 3/2/21 — Tattoo: RE 1069

HAROLDSON'S UPGRADE T100 330 (CHB)(DLF,HYF,IEF,MSUDF,MDF,DBF)  
**BCC UPGRADED 815F** (DLF,HYF,IEF,MSUDF,MDF,DBF)  
 P43960522 BCC SCARLET 509C (DLF,HYF,IEF,MSUDF,MDF,DBF)

SHF TAHOE R117 T100 (MSUDF,MDF,DBF)  
 MOHICAN MISSEY 93W (HYF)  
 NIW 73S W18 HOMETOWN 10Y ET (SOD)(CHB)(DLF,HYF,IEF,MSUDF,MDF,DBF)  
 BCC TARA 3108A (IEP)

BOYD LEGACY 3001 (DLF,HYF,IEF,MSUDF,MDF,DBF)  
**CHF 3001 BENNITA 8009**  
 P44101414 CHF W02 BENNITA 6049

AH JDH CRACKER JACK 26U ET (SOD)(DLF,HYF,IEF,MSUDF,MDF,DBF)  
 MSU APOLLONIA 37X ET (DLF,HYF,IEF,MSUDF,MDF,DBF)  
 DR MW TRASK GRASSMASTER W02 (DLF,HYF,IEF)  
 BW 5W 719T BENNITA 46Y (DLF,HYF,IEF)

	CE	BW	WW	YW	SCF	MM	M&G	MCW
<b>1.6</b>	<b>3.3</b>	<b>58</b>	<b>89</b>	<b>15.3</b>	<b>21</b>	<b>51</b>	<b>88</b>	
	UDDR	TEAT	FAT	REA	MARB	BMI\$	CHB\$	
<b>1.30</b>	<b>1.30</b>	<b>0.023</b>	<b>0.52</b>	<b>0.09</b>	<b>342</b>	<b>120</b>		

- When we bought Upgraded 815 we did so expecting females just like Bennita, dark red pigmented cows that are easy doing a productive.
- Will calve by sale day to Green 11E Blueprint 102G.

Consigned by: *Cottage Hill Farm, W. C. Taylor Family, Petersburg, WV, 304-257-0263 (David)*

## LOT 10 CHF 815F STACEY 2097

**LOT 10 COW**

P44525175 — Calved: 3/10/22 — Tattoo: RE 2097

HAROLDSON'S UPGRADE T100 330 (CHB)(DLF,HYF,IEF,MSUDF,MDF,DBF)  
**BCC UPGRADED 815F** (DLF,HYF,IEF,MSUDF,MDF,DBF)  
 P43960522 BCC SCARLET 509C (DLF,HYF,IEF,MSUDF,MDF,DBF)

SHF TAHOE R117 T100 (MSUDF,MDF,DBF)  
 MOHICAN MISSEY 93W (HYF)  
 NIW 73S W18 HOMETOWN 10Y ET (SOD)(CHB)(DLF,HYF,IEF,MSUDF,MDF,DBF)  
 BCC TARA 3108A (IEP)

BOYD NIW STAND OUT 0091 ET (SOD)  
**CHF STACEY 273Z**  
 P4392324 MISS LOGAN 470 CHF (DLF,HYF,IEF)

THM DURANGO 4037 (SOD)(DLF,HYF,IEF)  
 NIW BW LADYSPORT DEW 78P ET (DLF,HYF,IEF)  
 UHF SILVERADO U141  
 PENNY 174 CHF

	CE	BW	WW	YW	SCF	MM	M&G	MCW
<b>-2.3</b>	<b>3.8</b>	<b>51</b>	<b>78</b>	<b>19.4</b>	<b>21</b>	<b>47</b>	<b>92</b>	
	UDDR	TEAT	FAT	REA	MARB	BMI\$	CHB\$	
<b>1.50</b>	<b>1.40</b>	<b>-0.017</b>	<b>0.43</b>	<b>0.02</b>	<b>394</b>	<b>107</b>		

- If you like dark red pigmented cows Stacey is right up your alley. She is tight uddered and sound footed to last you and long time.
- Sells with a heifer calf at side, Lot 10A, by Boyd 135U Deliverance 0100 born 2/11/25.

Consigned by: *Cottage Hill Farm, W. C. Taylor Family, Petersburg, WV, 304-257-0263 (David)*





Lot 11 — BLL WW BW ATHENA K23

**LOT 11**  
**COW**

**BLL WW BW ATHENA K23** {DLF,HYF,IEF,MSUDF,MDF,DBF}

P44494492 — Calved: 9/11/23 — Tattoo: RE K23

LOEWEN GENESIS G16 ET (CHB)(DLF,HYF,IEF,MDF,DBF) NIW 792 Z311 ENDURE 1730 ET (SOD)(CHB)(DLF,HYF,IEF,MSUDF,MDF,DBF)  
 C GKB GUARDIAN 1015 ET (CHB)(DLF,HYF,IEF,MSUDF,MDF,DBF) LOEWEN 77 48 MISS 344N 4RB42ET (DLF,HYF,DBP)  
 P44257548 C CJC BELLE AIR LASS 8037 ET (DLF,HYF,IEF,MSUDF,MDF,DBF) BR BELLE AIR 6011 (SOD)(CHB)(DLF,HYF,IEF,MSUDF,DBF)  
 RST TIMES A WASTIN 0124 (SOD)(DLF,HYF,IEF) CJC 89T MISS MILES 4264 ET (DLF,HYF,IEF)  
 LHF GLORIA 0124 D076 ET (HYPMDF,DBF) CRR ABOUT TIME 743 (SOD)(DLF,HYF,IEF,MDF)  
 P43294361 RRF MORNING GLORY 40S (DLF,HYF,IEF) RST MS 1000 BLAZER 2029 (SOD)(DLF,HYF,IEF)  
 PW VICTOR BOOMER P066 (SOD)(DLF,HYF,IEF,MDF) SSF LILAC 204 (DLF,HYF)

CE	BW	WW	YW	SCF	MM	M&G	MCW
3.6	2.6	64	102	22.6	24	56	117
UDDR	TEAT	FAT	REA	MARB	BMI\$	CHB\$	
1.40	1.30	-0.037	0.64	0.07	473	144	

- Goggle eyed, dark red, and conservatively marked, Athena is a heifer that catches your eye. This homozygous polled daughter of C GKB Guardian 1015 ET, who is a Lowen Genesis son, is out of one of our most proven cows. Study her numbers and you have to appreciate her combination of growth with a WW and YW in the top 25%, combined with maternal indexes in the top 10% and CHB in the top 16%.
- Bred AI to Churchill Red Thunder 133J ET (Reg 44267942) on 12/9/24, then pasture exposed to NJW 792 81E Historian 334G ET (Reg 44099846) from 1/25/25 to 3/8/25. Observed bred by herd bull on 2/10. Updated breeding information available sale day.

Consigned by: Black Locust Livestock, Mike and Rebecca Webert, Warrenton, VA, Mike 703-906-4667, Rebecca 540-333-1019



Lot 12 — BLL WW KW CAMILLA K26

**LOT 12**  
**COW**

**BLL WW KW CAMILLA K26** {DLF,HYF,IEF,MSUDF,MDF,DBF}

P44494744 — Calved: 9/18/23 — Tattoo: RE K26

LOEWEN GENESIS G16 ET (CHB)(DLF,HYF,IEF,MDF,DBF) NIW 792 Z311 ENDURE 1730 ET (SOD)(CHB)(DLF,HYF,IEF,MSUDF,MDF,DBF)  
 C GKB GUARDIAN 1015 ET (CHB)(DLF,HYF,IEF,MSUDF,MDF,DBF) LOEWEN 77 48 MISS 344N 4RB42ET (DLF,HYF,DBP)  
 P44257548 C CJC BELLE AIR LASS 8037 ET (DLF,HYF,IEF,MSUDF,MDF,DBF) BR BELLE AIR 6011 (SOD)(CHB)(DLF,HYF,IEF,MSUDF,DBF)  
 KJ BJ 58Z CONTENDER D56 ET (CHB)(DLF,HYF,IEF,MSUDF,MDF,DBC) UPS SENSATION 2296 ET (SOD)(DLF,HYF,IEF,MSUDF,MDF,DBC)  
 BLL HONEY 763D D56 H39 ET (MDF,DBF) MSU RACHAEL 58Z ET (DLF,HYF,IEF,DBC)  
 44227756 KJ BJ 167X BRIDGETT 763D (DLF,HYF,IEF,MSUDF) R LEADER 6964 (SOD)(DLF,HYF,IEF,MSUDF,DBF)  
 KJ BJ 325S BRIDGETT 167X ET (SOD)(DLF,HYF,IEF,MDF,DBF)

CE	BW	WW	YW	SCF	MM	M&G	MCW
4.3	2.6	66	97	20.7	27	60	94
UDDR	TEAT	FAT	REA	MARB	BMI\$	CHB\$	
1.50	1.50	0.033	0.77	0.35	467	176	

- "I would take a field full of cows like that" is the perfect description of the cow family Camilla comes from. From maternal granddam, to dam, to dam's maternal sister, they consistently perform with beautiful udders and plenty of milk. Combine that maternal power with the carcass and growth found in her sire, C GKB Guardian 1015 ET, and this heterozygous polled female is one you definitely want to take a second look at. Bold ribbed, big footed, long sided and backed by a solid EPDs with REA, Marb, BMI, BII and CHB all in the top 10% or better, this girl has the potential to add value to a lot of herds.
- Bred AI to Churchill Red Thunder 133J ET (Reg. 44267942) on 11/20/24. Vet checked safe in calf with a bull calf on 2/6/25.

Consigned by: Black Locust Livestock, Mike and Rebecca Webert, Warrenton, VA, Mike 703-906-4667, Rebecca 540-333-1019

**Choice Lot 13A or 13B**



Lot 13A — BLL WW BW HARLEY GIRL K27 ET

**LOT 13A**  
**COW**

**BLL WW BW HARLEY GIRL K27 ET** {DLF,HYF,IEF,MSUDF,MDF,DBF}

44495718 — Calved: 9/21/23 — Tattoo: RE K27

BR CURRENCY 8144 ET (CHB)(DLF,HYF,IEF) DM BR SOONER (CHB)(DLF,HYF,IEF,MSUDF,MDF,DBF)  
 PERKS 0003 EASY MONEY 4003 (CHB)(DLF,HYF,IEF,MSUDF,MDF) BR GABRIELLE 5082 (DLF,HYF,IEF)  
 43501766 PR 144U RAMONA 0003 ET (DLF,HYF,IEF) TH 75J 243R BAILOUT 144U ET (SOD)(DLF,HYF,IEF)  
 NIW FHF 9710 TANK 45P (SOD)(DLF,HYF,IEF,MDF) FHF 8403 STARBUCK 19H (SOD)  
 SULL TCC MS HARLEY 310 ET (DLF,HYF,IEF,DBP) GV 579 VICTORIA 9710 (DLF,HYF,IEF)  
 43395185 LCC TWO TIMIN 438 ET (DLF,HYF,IEF,DBP) REMITTAL ONLINE 122L (SOD)(CHB)(DLF,HYF,IEF,DBC)  
 RST ROF REBA 28H (HYF)

CE	BW	WW	YW	SCF	MM	M&G	MCW
0.2	4.1	60	105	10.0	23	53	127
UDDR	TEAT	FAT	REA	MARB	BMI\$	CHB\$	
1.20	1.00	-0.017	0.73	0.00	279	129	

- This heifer and her sister are the result of some embryos we purchased from Jensen Bros. several years ago. We were fortunate enough to get two heifers from those embryos, and after much debate have decided to offer choice in this sale, with the other one coming back home to go in our herd. If you like your cattle a little bit bigger and more rugged in your design, with a balanced set of EPDs, take a look at these two horned heifers.
- Bred AI to Churchill Red Thunder 133J ET (Reg. 44267942) on 11/21/24, then pastured exposed to NJW 792 81E Historian 334G ET (Reg. 44099846) from 1/25/25 to 3/8/25. Observed bred by herd bull on 1/25/25. She was confirmed bred by blood on 2/24/25.

Consigned by: Black Locust Livestock, Mike and Rebecca Webert, Warrenton, VA, Mike 703-906-4667, Rebecca 540-333-1019



Lot 13B — BLL WW BW REBA K28 ET

**LOT 13B**  
**COW**

**BLL WW BW REBA K28 ET** {DLF,HYF,IEF,MSUDF,MDF,DBC}

44495720 — Calved: 9/21/23 — Tattoo: RE K28

BR CURRENCY 8144 ET (CHB)(DLF,HYF,IEF) DM BR SOONER (CHB)(DLF,HYF,IEF,MSUDF,MDF,DBF)  
 PERKS 0003 EASY MONEY 4003 (CHB)(DLF,HYF,IEF,MSUDF,MDF) BR GABRIELLE 5082 (DLF,HYF,IEF)  
 43501766 PR 144U RAMONA 0003 ET (DLF,HYF,IEF) TH 75J 243R BAILOUT 144U ET (SOD)(DLF,HYF,IEF)  
 NIW FHF 9710 TANK 45P (SOD)(DLF,HYF,IEF,MDF) FHF 8403 STARBUCK 19H (SOD)  
 SULL TCC MS HARLEY 310 ET (DLF,HYF,IEF,DBP) GV 579 VICTORIA 9710 (DLF,HYF,IEF)  
 43395185 LCC TWO TIMIN 438 ET (DLF,HYF,IEF,DBP) REMITTAL ONLINE 122L (SOD)(CHB)(DLF,HYF,IEF,DBC)  
 RST ROF REBA 28H (HYF)

CE	BW	WW	YW	SCF	MM	M&G	MCW
-1.5	4.8	56	95	3.7	21	48	125
UDDR	TEAT	FAT	REA	MARB	BMI\$	CHB\$	
1.20	1.00	-0.007	0.74	-0.10	180	118	

- We have gone back and forth on which one of these heifers we liked better since they were calves, and honestly, these two horned females are so similar in type and kind that it changes every time we look at them. We really don't think you can go wrong with which ever one you choose with their combination of performance and EPDs, and we look forward to seeing what type of cows they make.
- Bred AI to Churchill Red Thunder 133J ET (Reg. 44267942) on 1/16/25, then pastured exposed to NJW 792 81E Historian 334G ET (Reg. 44099846) from 1/25/25 to 3/8/25. Updated breeding information will be available sale day.

Consigned by: Black Locust Livestock, Mike and Rebecca Webert, Warrenton, VA, Mike 703-906-4667, Rebecca 540-333-1019

**LOT 14** **BBF MISS STAND OUT H3** (HYP)

P44217550 — Calved: 8/27/20 — Tattoo: RE BBF/LE H3

THM DURANGO 4037 (SOD)(DLF,HYF,IEF)  
**BOYD NJW STAND OUT 0091 ET** (SOD)  
 P43090266 NJW BW LADYSPORT DEW 78P ET (DLF,HYF,IEF)

CS BOOMER 29F (SOD)(DLF,HYF,IEF)  
 THM 7085 VICTRA 9036 (DLF,HYF,IEF)  
 RU 20X BOULDER 576 (SOD)  
 SADDLE VLY LADYSPORT 120

SHF RIB EYE M326 R117 (SOD)(CHB)(DLF,HYF,IEF)  
**BBF MISS G15 X31ET** (HYP)  
 P43140421 FELTONS G15 (HYP)

KCF BENNETT 3008 M326 (SOD)(CHB)(DLF,HYF,IEF,MDF,DBF)  
 HVH MISS HUDSON 83K 8M (HYP)  
 FELTONS 549 (HYP)  
 FELTONS B32 (OOD)(HYP)

CE	BW	WW	YW	SCF	MM	M&G	MCW
9.0	-0.6	44	68	20.4	29	52	78
UDDR	TEAT	FAT	REA	MARB	BMI\$	CHB\$	
1.40	1.40	-0.047	0.25	0.07	390	90	

- This has been a productive cow for us that we purchased from Bay Brook Farm a few years ago.
- Bred AI to Churchill Kingdom on 12/5/24, then pasture exposed to our KCF herd bull from 12/12/24 to 4/1/25. Vet confirmed safe to AI with a heifer calf. She has raised three calves with a weaning weight ratio of 102.

Consigned by: West Ray Farm, Justin Aronhalt, Bumpass, VA, 804-836-2678



Lot 14 — BBF MISS STAND OUT H3

**LOT 14A** **WRF HOUSTON M30** (HYP)

P44602215 — Calved: 9/13/24 — Tattoo: RE WRF/LE M30

SHF DAYBREAK Y02 D287 ET (CHB)(DLF,HYF,IEF,MSUDF)  
**SHF HOUSTON D287 H086** (CHB)(DLF,HYF,IEF,MSUDF,MDF,DBF)  
 P44123641 SHF MISS 14 20Z D223 (DLF,HYF,IEF,DBP)

SHF YORK 19H Y02 (SOD)(CHB)(DLF,HYF,IEF)  
 SHF MISS M326 T08 ET (DLF,HYF,IEF)  
 LOEWEN 44X 6X 20Z (DBP)  
 SHF RADAR R125 T75 (DLF,HYF,IEF,DBP)

BOYD NJW STAND OUT 0091 ET (SOD)  
**BBF MISS STAND OUT H3** (HYP)  
 P44217550 BBF MISS G15 X31ET (HYP)

THM DURANGO 4037 (SOD)(DLF,HYF,IEF)  
 NJW BW LADYSPORT DEW 78P ET (DLF,HYF,IEF)  
 SHF RIB EYE M326 R117 (SOD)(CHB)(DLF,HYF,IEF)  
 FELTONS G15 (HYP)

CE	BW	WW	YW	SCF	MM	M&G	MCW
5.4	1.1	64	102	19.8	30	62	103
UDDR	TEAT	FAT	REA	MARB	BMI\$	CHB\$	
1.40	1.40	0.003	0.79	0.18	433	146	

- September bull calf out of SHF Houston with a great set of EPDs. He will make a great herd bull.

Consigned by: West Ray Farm, Justin Aronhalt, Bumpass, VA, 804-836-2678



Lot 14A — WRF HOUSTON M30

**LOT 15** **BBF MISS STAND OUT G 4** (HYP)

P44073864 — Calved: 9/8/19 — Tattoo: RE BBF/LE G4

THM DURANGO 4037 (SOD)(DLF,HYF,IEF)  
**BOYD NJW STAND OUT 0091 ET** (SOD)  
 P43090266 NJW BW LADYSPORT DEW 78P ET (DLF,HYF,IEF)

CS BOOMER 29F (SOD)(DLF,HYF,IEF)  
 THM 7085 VICTRA 9036 (DLF,HYF,IEF)  
 RU 20X BOULDER 576 (SOD)  
 SADDLE VLY LADYSPORT 120

SHF RIB EYE M326 R117 (SOD)(CHB)(DLF,HYF,IEF)  
**BBF MISS G15 X31ET** (HYP)  
 P43140421 FELTONS G15 (HYP)

KCF BENNETT 3008 M326 (SOD)(CHB)(DLF,HYF,IEF,MDF,DBF)  
 HVH MISS HUDSON 83K 8M (HYP)  
 FELTONS 549 (HYP)  
 FELTONS B32 (OOD)(HYP)

CE	BW	WW	YW	SCF	MM	M&G	MCW
9.6	-0.8	41	63	19.2	26	46	83
UDDR	TEAT	FAT	REA	MARB	BMI\$	CHB\$	
1.30	1.30	-0.037	0.20	0.07	370	88	

- Another Bay Brook Farm cow that has been productive for us.
- Bred AI to KCF Monument J338 on 12/5/24, then pasture exposed to our KCF herd bull from 12/5/24 to 4/1/25. Confirmed safe in calf to our herd bull due to calf 10/15/25.

Consigned by: West Ray Farm, Justin Aronhalt, Bumpass, VA, 804-836-2678



Lot 15 — BBF MISS STAND OUT G 4

**LOT 15A** **WRF MISS HOUSTON M20** (HYP)

P44602212 — Calved: 9/8/24 — Tattoo: RE WRF/LE M20

SHF DAYBREAK Y02 D287 ET (CHB)(DLF,HYF,IEF,MSUDF)  
**SHF HOUSTON D287 H086** (CHB)(DLF,HYF,IEF,MSUDF,MDF,DBF)  
 P44123641 SHF MISS 14 20Z D223 (DLF,HYF,IEF,DBP)

SHF YORK 19H Y02 (SOD)(CHB)(DLF,HYF,IEF)  
 SHF MISS M326 T08 ET (DLF,HYF,IEF)  
 LOEWEN 44X 6X 20Z (DBP)  
 SHF RADAR R125 T75 (DLF,HYF,IEF,DBP)

BOYD NJW STAND OUT 0091 ET (SOD)  
**BBF MISS STAND OUT G 4** (HYP)  
 P44073864 BBF MISS G15 X31ET (HYP)

THM DURANGO 4037 (SOD)(DLF,HYF,IEF)  
 NJW BW LADYSPORT DEW 78P ET (DLF,HYF,IEF)  
 SHF RIB EYE M326 R117 (SOD)(CHB)(DLF,HYF,IEF)  
 FELTONS G15 (HYP)

CE	BW	WW	YW	SCF	MM	M&G	MCW
9.2	-0.4	59	93	19.2	28	57	106
UDDR	TEAT	FAT	REA	MARB	BMI\$	CHB\$	
1.30	1.30	0.003	0.77	0.21	424	147	

- A nice looking September heifer calf out of SHF Houston, with a good set of EPDs should be a productive cow like her dam.

Consigned by: West Ray Farm, Justin Aronhalt, Bumpass, VA, 804-836-2678



SHF HOUSTON D287 H086 — Sire of Lots 14A and 15A





Lot 16 — BBF MISS BOBBIE 183F J13



Lot 16A — BBF MISS KINGDOM 128J M4



Lot 17 — BBF MISS EXPEDITION K3



Lot 17A — BBF MISS EXPEDITION M21

**LOT 16 COW** **BBF MISS BOBBIE 183F J13** (DBP)  
 P44317271 — Calved: 9/9/21 — Tattoo: RE BBF/LE J13

KCF BENNETT STRATEGY 2303 ET (CHB) (DLF,HYF,IEF,MSUDF,MDF,DBF) SCHU-LAR ON TARGET 22S (SOD) (CHB) (DLF,HYF,IEF,MSUDF,MDF,DBF)  
 TH MASTERPLAN 183F (CHB) (DLF,HYF,IEF,MSUDF,MDF,DBF) KCF MISS REVOLUTION X338 ET (DLF,HYF,IEF,MSUDF,MDF,DBF)  
 P43280493 TH 512X145Y DOMINETTE 57B (DLF,HYF,IEF) FTF PROSPECTOR 145Y (SOD) (DLF,HYF,IEF,MSUDF,MDF,DBF)  
 TH 122 711 DOMINETTE 512X ET (DLF,HYF,IEF)

TH 122 711 VICTOR 719T (SOD) (DLF,HYF,IEF,MSUDF,MDF,DBF) DRF JWR PRINCE VICTOR 711 (SOD) (DLF,HYF,IEF,MSUDF,MDF,DBF)  
 DTF AURORA 719T 2212 (DLF,HYF,IEF,MSUDF) KBCR 190 DOMINETTE 122 (DLF,HYF,IEF)  
 P43281850 DTF FAITH R117 0X12 (DLF,HYF,IEF) SHF RIB EYE M326 R117 (SOD) (CHB) (DLF,HYF,IEF,MSUDF,MDF,DBF)  
 DTF ADESA 579 907

CE	BW	WW	YW	SCF	MM	M&G	MCW
5.6	0.7	60	100	20.6	20	51	92
UDDR	TEAT	FAT	REA	MARB	BMI\$	CHB\$	
1.60	1.60	0.033	0.45	0.25	427	137	

- J13 is an outstanding dark red goggle eyed beauty. Adding to her feature is a beautiful udder.
  - Bred AI to Churchill Kingdom 128J ET (with sexed heifer semen) on 12/6/24, then pasture exposed to BBF Expedite K13 from 12/15/24 until sale date. J13 was vet checked safe to the AI date and confirmed with a heifer calf. DNA has been submitted and will be available prior to the sale.
- Consigned by: Bay Brook Farm, Rodney and Barbara Philips, Dabneys, VA, 804-387-9447

**LOT 16A HEIFER** **BBF MISS KINGDOM 128J M4** (DBP)  
 P44612087 — Calved: 9/4/24 — Tattoo: RE BBF/LE M4

DM ALL AROUND 904G ET (CHB) (DLF,HYF,IEF,MSUDF,MDF,DBF) LCX PERFECTO 11B ET (SOD) (DLF,HYF,IEF,MSUDF,MDF,DBF)  
 CHURCHILL KINGDOM 128J ET (DLF,HYF,IEF,MSUDF,MDF,DBF) DM L1 DOMINETTE 301 ET (DLF,HYF,IEF,MSUDF,MDF,DBF)  
 P44267937 BR VALIDATED B413 6035 7098 (DLF,HYF,IEF,MSUDF,MDF,DBF) EFBEEF BR VALIDATED B413 (SOD) (CHB) (DLF,HYF,IEF,MSUDF,MDF,DBF)  
 BR BENNETT 4R 4428 2101 6035 (HYF,IEF)

TH MASTERPLAN 183F (CHB) (DLF,HYF,IEF,MSUDF,MDF,DBF) KCF BENNETT STRATEGY 2303 ET (CHB) (DLF,HYF,IEF,MSUDF,MDF,DBF)  
 BBF MISS BOBBIE 183F J13 (DBP) TH 512X145Y DOMINETTE 57B (DLF,HYF,IEF)  
 P44317271 DTF AURORA 719T 2212 (DLF,HYF,IEF,MSUDF) TH 122 711 VICTOR 719T (SOD) (DLF,HYF,IEF,MSUDF,MDF,DBF)  
 DTF FAITH R117 0X12 (DLF,HYF,IEF)

CE	BW	WW	YW	SCF	MM	M&G	MCW
7.8	0.4	60	96	21.8	28	58	91
UDDR	TEAT	FAT	REA	MARB	BMI\$	CHB\$	
1.50	1.50	0.043	0.72	0.41	456	147	

- M4 catches your eye dark red; stout but feminine. Act. BW 72 lb. Study the EPD profile 14 EPDs in the top 25%. Weaning weight and DNA results will be available prior to the sale. Oh, J13 has another heifer just like this one coming this fall.
- Consigned by: Bay Brook Farm, Rodney and Barbara Philips, Dabneys, VA, 804-387-9447

**LOT 17 COW** **BBF MISS EXPEDITION K3**  
 P44417751 — Calved: 9/1/22 — Tattoo: RE BBF/LE K3

NIW LONG HAUL 36E ET (SOD) (DLF,HYF,IEF,MSUDF,MDF,DBF) CHURCHILL SENSATION 028X (SOD) (DLF,HYF,IEF,MSUDF,MDF,DBF)  
 SR EXPEDITION 619G ET (CHB) (DLF,HYF,IEF,MSUDF) NIW 79Z 10W RITA 11B (DLF,HYF,IEF,MSUDF,MDF,DBF)  
 P44054044 CHURCHILL LADY 7189E ET (DLF,HYF,IEF,MSUDF,MDF,DBF) R LEADER 696 4 (SOD) (DLF,HYF,IEF,MSUDF,MDF,DBF)  
 CHURCHILL LADY 500C ET (DLF,HYF,IEF,MSUDF,MDF,DBF)

KCF BENNETT ENCORE Z311 ET (SOD) (CHB) (DLF,HYF,IEF,MSUDF,MDF,DBF) SCHU-LAR ON TARGET 22S (SOD) (CHB) (DLF,HYF,IEF,MSUDF,MDF,DBF)  
 BBF MISS RED ENCORE G10 KCF MISS REVOLUTION X338 ET (DLF,HYF,IEF,MSUDF,MDF,DBF)  
 P44085462 KCF MISS RED BULL C772 ET (SOD) (DLF,HYF,IEF,MSUDF,MDF,DBF) CHURCHILL RED BULL 200Z (SOD) (DLF,HYF,IEF,MSUDF,MDF,DBF)  
 KCF MISS REVOLUTION 228B ET (DLF,HYF,IEF,MSUDF,MDF,DBF)

CE	BW	WW	YW	SCF	MM	M&G	MCW
5.5	0.5	68	114	24.4	38	72	105
UDDR	TEAT	FAT	REA	MARB	BMI\$	CHB\$	
1.40	1.50	0.033	0.53	0.29	487	139	

- We really hate to part with this one. I believe this is the first female offspring that traces back to the KCF Miss Red Bull C772 cow. If you are attracted to the EPD profile K3 has a fabulous profile. If you like dark red color and a beautiful udder she has that.
  - Bred AI to KCF Bennett Dominion K510 on 12/6/24, then pasture exposed to BBF Expedite K13 from 12/15/24 until sale date. K3 was vet checked safe to the AI date.
- Consigned by: Bay Brook Farm, Rodney and Barbara Philips, Dabneys, VA, 804-387-9447

**LOT 17A HEIFER** **BBF MISS EXPEDITION M21**  
 P44611295 — Calved: 10/2/24 — Tattoo: RE BBF/LEM21

SR EXPEDITION 619G ET (CHB) (DLF,HYF,IEF,MSUDF) NIW LONG HAUL 36E ET (SOD) (DLF,HYF,IEF,MSUDF,MDF,DBF)  
 BBF Expedite K13 (DLF,HYF,IEF,MSUDF) CHURCHILL LADY 7189E ET (DLF,HYF,IEF,MSUDF,MDF,DBF)  
 P44408374 BBF Hopes Leader G8 R LEADER 696 4 (SOD) (DLF,HYF,IEF,MSUDF,MDF,DBF)  
 BBF HOPES STAR STANDOUT Z38 (SOD)

SR EXPEDITION 619G ET (CHB) (DLF,HYF,IEF,MSUDF) NIW LONG HAUL 36E ET (SOD) (DLF,HYF,IEF,MSUDF,MDF,DBF)  
 BBF MISS EXPEDITION K3 CHURCHILL LADY 7189E ET (DLF,HYF,IEF,MSUDF,MDF,DBF)  
 P44417751 BBF MISS RED ENCORE G10 KCF BENNETT ENCORE Z311 ET (SOD) (CHB) (DLF,HYF,IEF,MSUDF,MDF,DBF)  
 KCF MISS RED BULL C772 ET (SOD) (DLF,HYF,IEF,MSUDF,MDF,DBF)

CE	BW	WW	YW	SCF	MM	M&G	MCW
4.2	1.4	65	107	25.3	34	67	103
UDDR	TEAT	FAT	REA	MARB	BMI\$	CHB\$	
1.40	1.50	0.033	0.44	0.18	480	114	

- M21 is the spitting image of her dam. She's dark red, with pigment and very feminine. Actual birthweight of 70 pounds. Like her dam her EPD profile is off the charts. Weaning weight will be available prior to the sale.
- Consigned by: Bay Brook Farm, Rodney and Barbara Philips, Dabneys, VA, 804-387-9447



# The DABNEYS Connection

Three farms in close proximity to one another share one common goal - to produce the *Highest Quality Hereford* cattle possible.



**Rodney and Barbara Phillips**  
4277 Factory Mill Rd  
Dabneys, VA 23102  
804.387.9447



**Justin Aronhalt**  
28 Willow Oak Lane  
Bumpass, VA 23024  
804.836.2678



**The Lawson Family**  
4442 Factory Mill Rd  
Dabneys, VA 23102  
804.514.0297 - Kyle

We offer spring and fall cows, bred heifers, open heifers, breeding age bulls and Premium F1 baldies.

*We welcome phone calls and visits anytime.*

## LOT 18 HHF LAWSON'S SOCKS M16 [DLF, HYF, IEF, MSUDF, MDF, DBF]



**P44588051** - Calved: 3/18/24 - Tattoo: **RE HHF/LE M16**  
KCF BENNETT STRATEGY 2303 ET (CHB) (DLF, HYF, IEF, MSUDF, MDF, DBF) SCHU-LAR ON TARGET 22S (S00) (CHB) (DLF, HYF, IEF, MSUDF, MDF, DBF)  
KCF MISS REVOLUTION X338 ET (DLF, HYF, IEF, DBF) KCF MISS REVOLUTION X338 ET (DLF, HYF, IEF, DBF)  
P43920493 TH 512X145Y DOMINETTE 57B (DLF, HYF, IEF) FTF PROSPECTOR 145Y (S00) (DLF, HYF, IEF, MSUDF, MDF) TH 122 711 DOMINETTE 512X ET (DLF, HYF, IEF)  
KCF BENNETT SENSATION B711 ET (DLF, HYF, IEF, MSUDF, MDF, DBF) CHURCHILL SENSATION 028X (S00) (DLF, HYF, IEF, MSUDF, MDF, DBF)  
**5STAR B711 CHLOE 011** (DLF, HYF, IEF, MSUDF) KCF MISS PROFICIENT U201 (DLF, HYF, IEF, MSUDF, MDF, DBF)  
P44157956 5STAR X113 CHLOE 503 (DLF, HYF, IEF, MSUDF, MDF, DBF) JDB 4R REVOLUTION X113 (DBP) FPH MISS VICKY177DURANGO A133 (DBP)

CE	BW	WW	YW	SCF	MM	M&G	MCW
-3.5	2.9	70	113	17.0	24	59	91
UDDR	TEAT	FAT	REA	MARB	BMI\$	CHB\$	
1.40	1.40	0.053	0.54	0.29	383	142	

- Act. BW 79 lb.; Act. WW 524 lb.; YW available day of sale.
- Sells open and ready to breed to the bull of your choice. She is up to date on all vaccinations. She was a favorite of ours from birth and should make a great addition to any herd.

Consigned by: Howling Hounds Farm, Lawson Family, Columbia, VA, 804-514-0297



Lot 18 - HHF LAWSON'S SOCKS M16

## LOT 19 KIDD 87G SWEETNESS 25K [DLF, HYF, IEF, MSUDF, MDF]



**P44425457** - Calved: 10/2/22 - Tattoo: **LE KF25**  
/S MANDATE 66589 ET (S00) (DLF, HYF, IEF, MSUDF, MDF, DBF) R LEADER 6964 (S00) (DLF, HYF, IEF, MSUDF, MDF, DBF)  
**NJW 133A 6589 MANIFEST 87G ET** (DLF, HYF, IEF, MSUDF, MDF, DBF) /S LADY DOMINO 0158X (DLF, HYF, IEF) /S LADY DOMINO 0158X (DLF, HYF, IEF)  
P44057384 BW NJW 76S BY HOMESPUN 133A (DLF, HYF, IEF, MSUDF, MDF, DBF) NJW 73S W18 HOMETOWN 10Y ET (S00) (CHB) (DLF, HYF, IEF, MSUDF, MDF, DBF) NJW 55N STARDUST 76S (DLF, HYF, IEF, MSUDF, MDF, DBF)  
CHURCHILL RED BULL 200Z (S00) (DLF, HYF, IEF, MSUDF, MDF, DBF) CHURCHILL SENSATION 028X (S00) (DLF, HYF, IEF, MSUDF, MDF, DBF)  
**KFF HEIDI KIDD 200Z KF6H** (DLF, HYF, IEF, MSUDF, MDF, DBF) CHURCHILL LADY 002X ET (DLF, HYF, IEF, MSUDF, MDF, DBF)  
P44200287 CHF EMILY 150Y (DLF, HYF, IEF) UHF 669 STAMINA U01T (DLF, HYF, IEF) MISS LIMITED ED 735 CHF (DLF, HYF, IEF)

CE	BW	WW	YW	SCF	MM	M&G	MCW
2.5	2.5	66	108	19.7	31	64	122
UDDR	TEAT	FAT	REA	MARB	BMI\$	CHB\$	
1.30	1.20	0.013	0.63	0.15	426	139	

- Very nice Manifest cow with nice baldie steer by her side. Raising nice calf. Easy to keep.
- Bred AI to HHF Provision 5L ET on 12/21/24, then pasture exposed to an Angus bull from 12/26/24 to 3/10/25.
- Steer baldie calf by side born 11/1/24.
- Breeding information sale day

Consigned by: Kidd Family Farm, Timothy and Tonya Kidd, Roseland, VA, 434-944-5127

## LOT 20 KIDD 216J ISABELL 101ET



**P44565270** - Calved: 1/31/24 - Tattoo: **LE KF2M**  
NJW 133A 6589 MANIFEST 87G ET (DLF, HYF, IEF, MSUDF, MDF, DBF) /S MANDATE 66589 ET (S00) (DLF, HYF, IEF, MSUDF, MDF, DBF)  
**NJW 119E 87G ENDORSEMENT 216J** (DLF, HYF, IEF, MSUDF, MDF, DBF) BW NJW 76S BY HOMESPUN 133A (DLF, HYF, IEF, MSUDF, MDF, DBF)  
P44272851 NJW 8B 164C LEXY 119E (DLF, HYF, IEF, MSUDF, MDF, DBF) NJW 76S 88X CIRCLEBOSS 164C ET (DLF, HYF, IEF, MSUDF, MDF, DBF) NJW 149Z 10W LEXY 88 (S00) (DLF, HYF, IEF, MSUDF, MDF, DBF)  
LJR 023R WHITMORE 10W (S00) (DLF, HYF, IEF, MSUDF, MDF, DBF) KJ C&L 1119 LOGIC 023R ET (S00) (DLF, HYF, IEF, MSUDF, MDF, DBF)  
**KFF FANCY 10W KF2J ET** (DLF, HYF, IEF, MSUDF, MDF, DBF) LJR MICKEY 278N (S00) (DLF, HYF, IEF) NJW 73S M326 TRUST 100W ET (S00) (CHB) (DLF, HYF, IEF, MSUDF, MDF, DBF)  
P44236507 NJW 101U 100W SPIRITQUEEN 103Y (DLF, HYF, IEF, MSUDF, MDF, DBF) NJW 4037 55N FREE SPIRIT 101U (DLF, HYF, IEF)

CE	BW	WW	YW	SCF	MM	M&G	MCW
9.6	0.0	64	100	20.8	26	58	101
UDDR	TEAT	FAT	REA	MARB	BMI\$	CHB\$	
1.40	1.30	0.013	0.45	0.06	405	103	

- Here is a heifer calf out of an embryo I purchased from NJW. I flushed to Endorsement and this is one of the many heifer offsprings I have. Take a closer look at this one. She will be ready to breed to the bull of your choice.

Consigned by: Kidd Family Farm, Timothy and Tonya Kidd, Roseland, VA, 434-944-5127



BAR JZ ON DEMAND — Service Sire



KCF BENNETT HOMEWARD C776 — Paternal Grand sire of 21A, 22 and 23



NJW 73S M326 TRUST 100W ET — Maternal Grand sire of Lot 23

**LOT 21 S/B/C BENNETT PLUS B642 1808** (HYP,DBP)

P43926606 — Calved: 3/12/18 — Tattoo: LE 893

RST 0124 TIMES A WASTIN 2107 (S00)(CHB)(DLF,HYF,IEF,MSUDF,DBF) RST TIMES A WASTIN 0124 (S00)(DLF,HYF,IEF)  
 KCF BENNETT 2107 B642 (CHB)(DLF,HYF,IEF,DBP) RST MS P20 PROGRESS 8007 (D00)(DLF,HYF,IEF,DBP)  
 P43552029 KCF MISS REVOLUTION 2273 ET (DLF,HYF,IEF,DBP) MSU TCF REVOLUTION 4R (S00)(DLF,HYF,IEF,MDF,DBF)  
 KCF MISS PROFICIENT U201 (DLF,HYF,IEF,MSUDF,MDF)

BKR TRIPLE PLUS 73C 20L (S00)(HYP) RF POSTIVE PLUS 73C (S00)(DLF,IEF)  
 S/B/C TRUSTEE PLUS 73C T20 (HYP) BKR VICTORIA 262D 4J (HYP)  
 P43142274 WEA MISS TRUSTEE 302 GRAYSTONE TRUSTEE (S00)  
 WEA EILEEN 9906 102

CE	BW	WW	YW	SCF	MM	M&G	MCW
1.6	3.0	57	91	13.3	18	46	78
UDDR	TEAT	FAT	REA	MARB	BMI\$	CHB\$	
1.20	1.30	0.003	0.41	0.05	304	114	

- 1808 is a productive brood cow that goes back to the 2013 NWSS Supreme Champion bull RST Times A Wastin 0124. She is doing a great job with her August heifer calf sired by KCF Bennett C776 G473.
  - Bred AI to Bar JZ On Demand on 11/30/25, then pasture exposed to HHF Easy Money 63G 11E 2L ET from 12/14/24 until sale day. Breeding information available sale day.
- Consigned by: Hereford Hollow Farm, Joel and Amanda Blevins, Wytheville, VA, 276-759-1675

**LOT 21A HEIFER HHF MIRANDA 30M** (HYP,DBP)

P44613716 — Calved: 8/19/24 — Tattoo: BE 30M

KCF BENNETT HOMEWARD C776 (CHB)(DLF,HYF,IEF,MSUDF,MDF,DBF) NJW 73S W18 HOMETOWN 10Y ET (S00)(CHB)(DLF,HYF,IEF,MSUDF,MDF)  
 KCF MISS 225 2301 ET (DLF,HYF,IEF,DBP) KCF MISS 225 2301 ET (DLF,HYF,IEF,DBP)  
 P44105203 KCF MISS RED BULL C580 (DLF,HYF,IEF,MSUDF,MDF,DBF) CHURCHILL RED BULL 200Z (S00)(DLF,HYF,IEF,MSUDF,MDF,DBF)  
 KCF MISS REVOLUTION 2358 (D00)(DLF,HYF,IEF,DBP)

KCF BENNETT 2107 B642 (CHB)(DLF,HYF,IEF,DBP) RST 0124 TIMES A WASTIN 2107 (S00)(CHB)(DLF,HYF,IEF,MSUDF,DBF)  
 S/B/C BENNETT PLUS B642 1808 (HYP,DBP) KCF MISS REVOLUTION 2273 ET (DLF,HYF,IEF,DBP)  
 P43926606 S/B/C TRUSTEE PLUS 73C T20 (HYP) BKR TRIPLE PLUS 73C 20L (S00)(HYP)  
 WEA MISS TRUSTEE 302

CE	BW	WW	YW	SCF	MM	M&G	MCW
0.4	2.8	61	98	15.6	25	55	88
UDDR	TEAT	FAT	REA	MARB	BMI\$	CHB\$	
1.40	1.40	0.003	0.48	0.18	352	131	

- 30M is a G473 daughter that is the right kind. She is dark red with red eyes and should turn out to be a great cow.
- Consigned by: Hereford Hollow Farm, Joel and Amanda Blevins, Wytheville, VA, 276-759-1675

**LOT 22 HEIFER HHF HALEY G473 19M** (DLF,HYF,IEF,MSUDF,MDF,DBF)

P44557775 — Calved: 4/3/24 — Tattoo: BE 19M

KCF BENNETT HOMEWARD C776 (CHB)(DLF,HYF,IEF,MSUDF,MDF,DBF) NJW 73S W18 HOMETOWN 10Y ET (S00)(CHB)(DLF,HYF,IEF,MSUDF,MDF)  
 KCF MISS 225 2301 ET (DLF,HYF,IEF,DBP) KCF MISS 225 2301 ET (DLF,HYF,IEF,DBP)  
 P44105203 KCF MISS RED BULL C580 (DLF,HYF,IEF,MSUDF,MDF,DBF) CHURCHILL RED BULL 200Z (S00)(DLF,HYF,IEF,MSUDF,MDF,DBF)  
 KCF MISS REVOLUTION 2358 (D00)(DLF,HYF,IEF,DBP)

CHF 59Y TRUST 5205 (DLF,HYF,IEF,MSUDF,DBF) DRK KNIGHT 3238 6V (DLF,HYF,IEF)  
 SK HOLLY 18 (HYP,MSUDP,DBP) STAR YOU WILL FIND ME 20Y (MSUDP,DBP)  
 P43986363 SK SNICKERS (HYP,MSUDP,DBP) BOOMER PATRICK (DLF,HYF,IEF,MSUDP)  
 WV PERFECT CHOICE A17 (HYP,DBP)

CE	BW	WW	YW	SCF	MM	M&G	MCW
-0.1	3.1	63	98	19.7	31	63	99
UDDR	TEAT	FAT	REA	MARB	BMI\$	CHB\$	
1.20	1.20	0.003	0.25	0.25	408	127	

- 19M is another G473 daughter loaded with performance and growth. Should make a great brood cow that will be productive for years to come.
  - Sells open ready to breed to the bull of your choice. MDF and DBF.
- Consigned by: Hereford Hollow Farm, Joel and Amanda Blevins, Wytheville, VA, 276-759-1675

**LOT 24 HEIFER SRM HOLLYS LADY 402 ET**

P44539102 — Calved: 1/4/24 — Tattoo: RE SRM/LE 402

SHF DAYBREAK Y02 D287 ET (CHB)(DLF,HYF,IEF,MSUDF) SHF YORK 19H Y02 (S00)(CHB)(DLF,HYF,IEF)  
 SHF HOUSTON D287 H086 (CHB)(DLF,HYF,IEF,MSUDF,MDF,DBF) SHF MISS 326 T08 ET (DLF,HYF,IEF)  
 P44123641 SHF MISS 14 20Z D223 (DLF,HYF,IEF,DBP) LOEWEN 44X 6X 20Z (DBP)  
 SHF RADAR R125 T75 (DLF,HYF,IEF,DBP)

GERBER SQUIRE 627S (CHB)(HYP,MSUDP) KCF BENNETT 3008 M326 (S00)(CHB)(DLF,HYF,IEF,MDF,DBF)  
 GERBER 627S HOLLY 096Y (DLF,HYF,IEF,MSUDF) GERBER 24F DAGMAR 470P (HYP,MSUDP)  
 P43259644 GERBER 116K HOLLY T115 (HYP,MSUDP) GERBER FIRESTORM 116K (HYP)  
 GERBER 51M HOLLY 060K (HYP,MSUDP)

CE	BW	WW	YW	SCF	MM	M&G	MCW
1.0	3.0	71	117	13.1	31	67	122
UDDR	TEAT	FAT	REA	MARB	BMI\$	CHB\$	
1.30	1.40	0.013	0.96	0.29	363	177	

- Very balanced EPDs on this heifer out of the famed donor Gerber Holly and the popular Houston bull. She indexes in the top 10 percent on seven indexes — a true cow in the making. This heifer and both others offered today are bred in our herd — which is free of any known genetic defects. OCV.
- Consigned by: Stone Ridge Manor, Daniel and Seth Snyder, Gettysburg, PA, 240-447-4600 (Daniel), 240-405-6049 (Seth cell)

**LOT 23 HEIFER HHF PEARL G473 21M** (DLF,HYF,IEF,MSUDF,MDF,DBF)

P44557774 — Calved: 4/10/24 — Tattoo: BE 21M

KCF BENNETT HOMEWARD C776 (CHB)(DLF,HYF,IEF,MSUDF,MDF,DBF) NJW 73S W18 HOMETOWN 10Y ET (S00)(CHB)(DLF,HYF,IEF,MSUDF,MDF)  
 KCF MISS 225 2301 ET (DLF,HYF,IEF,DBP) KCF MISS 225 2301 ET (DLF,HYF,IEF,DBP)  
 P44105203 KCF MISS RED BULL C580 (DLF,HYF,IEF,MSUDF,MDF,DBF) CHURCHILL RED BULL 200Z (S00)(DLF,HYF,IEF,MSUDF,MDF,DBF)  
 KCF MISS REVOLUTION 2358 (D00)(DLF,HYF,IEF,DBP)

THM 100W KELSO 2084 ET (DLF,HYF,IEF) NJW 73S M326 TRUST 100W ET (S00)(CHB)(DLF,HYF,IEF,MSUDF,MDF,DBF)  
 THM KELLY 29F 3043 (DLF,HYF,IEF) THM KELLY 29F 3043 (DLF,HYF,IEF)  
 P43783826 GLENVIEW 3N NECKLACE 7472ET (HYP) ELM-LODGE NEXT BIG THING 3N (HYP)  
 ELM-LODGE NECKLACE ET 37N

CE	BW	WW	YW	SCF	MM	M&G	MCW
0.4	1.5	51	81	21.6	28	54	71
UDDR	TEAT	FAT	REA	MARB	BMI\$	CHB\$	
1.40	1.50	0.013	0.47	0.29	443	137	

- 21M is a G473 daughter that is dark red, short marked, with red eyes. Her dam is very productive and an easy keeper. Should turn into a great cow.
  - Sells open ready to breed to the bull of your choice. MDF and DBF.
- Consigned by: Hereford Hollow Farm, Joel and Amanda Blevins, Wytheville, VA, 276-759-1675



**LOT 25**  
**HEIFER**

**SRM A20 MS HOLLAND 405 ET**

P44538564 — Calved: 1/20/24 — Tattoo: RE SRM/LE 405

NJW 79Z Z311 ENDURE 1730 ET (S00)(CHB)(DLF,HYF,IEF,MSUDF,MDF,DBF) KCF BENNETT ENCORE Z311 ET (S00)(CHB)(DLF,HYF,IEF,MSUDF,MDF,DBF)  
 CMF OHR 250D HOLLAND 625H (CHB)(DLF,HYF,IEF,MSUDF,MDF) BW 91H 100W RITA 79Z ET (DLF,HYF,IEF,MSUDF,MDF)  
 P44203422 CMF 116B TORI 250D (DLF,HYF,IEF,MSUDF) GERBER ANODYNE 001A (S00)(CHB)(DLF,HYF,IEF,MSUDF)  
 CMF 40X TORI 116B  
 PW VICTOR BOOMER P606 (S00)(DLF,HYF,IEF,MDF) REMITALL BOOMER 46B (S00)(DLF,HYF,IEF)  
**DR VICTORY LADY P606 A20** (DLF,HYF,IEF,MSUDF) PW VICTORIA 964 8114 (DLF,HYF,IEF)  
 P43439021 BBF MS PRIME TIME S141 (DLF,HYF,IEF) TPH VICTOR 579 68K (HYF)  
 WILL-VIA MS VICTORIA P-26 (HYF)

CE	BW	WW	YW	SCF	MM	M&G	MCW
-0.1	2.5	63	100	22.5	37	68	93
UDDR	TEAT	FAT	REA	MARB	BMI\$	CHB\$	
1.30	1.30	0.033	0.65	0.16	459	131	

Ms Holland is a half sister to the \$7,000 lot that Don Richardson sold in this past fall's sale. Her donor dam A20 pictured at 11 years of age has always made it happen. 405 is homozygous polled by pedigree and OCV. She will definitely be a herd improver.

Consigned by: Stone Ridge Manor, Daniel and Seth Snyder, Gettysburg, PA, 240-447-4600 (Daniel), 240-405-6049 (Seth cell)



DR VICTORY LADY P606 A20 — Dam of Lot 25

**LOT 26**  
**HEIFER**

**SRM 906 MS TEXAS 409 ET**

P44638552 — Calved: 2/7/24 — Tattoo: RE SRM/LE 409

SHF DAYBREAK Y02 D287 ET (CHB)(DLF,HYF,IEF,MSUDF) SHF YORK 19H Y02 (S00)(CHB)(DLF,HYF,IEF)  
**SHF HOUSTON D287 H086** (CHB)(DLF,HYF,IEF,MSUDF,MDF,DBF) SHF MISS M326 T08 ET (DLF,HYF,IEF)  
 P44123641 SHF MISS 14 20Z D223 (DLF,HYF,IEF,DBP) LOEWEN 44X 6X 20Z (DBP)  
 SHF RADAR R125 T75 (DLF,HYF,IEF,DBP)  
 R LEADER 6964 (S00)(DLF,HYF,IEF,MSUDF,DBF) HYALITE ON TARGET 936 (S00)(DLF,HYF,IEF,MSUDF)  
**HFC GIGI 906** (DLF,HYF,IEF,MSUDF,MDF,DBF) R MISS REVOLUTION 1009 (S00)(DLF,HYF,IEF,DBP)  
 P44165165 HF EVE 705 ET (DBP) JDH VICTOR 719T 33Z ET (S00)(CHB)(DLF,HYF,IEF,MSUDF,DBP)  
 NS 028X LADY 417 (DLF,HYF,IEF,MSUDF,DBP)

CE	BW	WW	YW	SCF	MM	M&G	MCW
2.0	3.1	77	126	19.9	27	66	105
UDDR	TEAT	FAT	REA	MARB	BMI\$	CHB\$	
1.40	1.40	0.053	0.89	0.20	444	159	

Ms Texas is out of a donor that is one of the best uddered Leader daughters I have ever seen. Being out of Houston she is homozygous polled by pedigree. Ms Texas is in the top 1% of the breed for WW and YW and in the top 10% in five other traits. She will be cow power. OCV.

Consigned by: Stone Ridge Manor, Daniel and Seth Snyder, Gettysburg, PA, 240-447-4600 (Daniel), 240-405-6049 (Seth cell)

**LOT 28**  
**COW**

**CBF MISS ANNIE 84 010L (HYF)**

P44611485 — Calved: 10/29/23 — Tattoo: LE 010L

LX PERFECTO 11B ET (S00)(DLF,HYF,IEF,MSUDF) NJW 98S R17 RIBYE 88X ET (S00)(DLF,HYF,IEF,MSUDF,MDF,DBF)  
**BG LCC 11B PERFECTO 84F** (DLF,HYF,IEF,MSUDF,MDF,DBF) WLL Z0EY 3Z (DLF,HYF,IEF,MDF,DBF)  
 P43892306 BG 100W NICKY 31C (S00)(DLF,HYF,IEF,MSUDF,MDF,DBF) NJW 73S M326 TRUST 100W ET (S00)(CHB)(DLF,HYF,IEF,MSUDF,MDF,DBF)  
 BG MS DOMINO 90Z (HYF)  
 NJW 160B 028X HISTORIC 81E ET (S00)(DLF,HYF,IEF,MSUDF,MDF,DBF) CHURCHILL SENSATION 028X (S00)(DLF,HYF,IEF,MDF,DBF)  
**PAC 81E ANGEL 25H (HYF)** NJW 73S 38W DAYDREAM 160B (DLF,HYF,IEF,MSUDF)  
 P44207076 PAC 743 GOOD TIMES 09C (HYF) CRR ABOUT TIME 743 (S00)(DLF,HYF,IEF,MDF)  
 WA PAC IVY 5097 4X (HYF)

CE	BW	WW	YW	SCF	MM	M&G	MCW
0.9	2.3	66	104	22.2	41	74	94
UDDR	TEAT	FAT	REA	MARB	BMI\$	CHB\$	
1.40	1.40	0.043	0.70	-0.07	440	102	

This is a short marked heifer out of Perfecto 84F and a Historic 81E daughter that we're happy with and believe she should make an excellent cow in any program. She has very good calving ease EPDs and should be a heavy milker for calves to really grow.

Consigned by: Creek Bend Farms, Robert Meek, Marion, VA, 276-698-0548

**LOT 29**  
**COW**

**CBF MILDRED 7256 050L (MDP)**

P44611489 — Calved: 10/19/23 — Tattoo: LE 050L

LJS MARK DOMINO 1321 (S00)(CHB)(DLF,HYF,IEF,MSUDF,MDF,DBF) LJS MARK DOMINO 0945 (S00)(CHB)(DLF,HYF,IEF,MSUDF)  
**CHURCHILL NIGHTCAP 7256E** (DLF,HYF,IEF,MSUDF,MDF,DBF) LJS MS MARK DOMINO 1125 (DLF,HYF,IEF)  
 43802046 CHURCHILL LADY 302A (DLF,HYF,IEF) CLT DOMINO 144Y 1ET (DLF,HYF,IEF)  
 CHURCHILL LADY 9134W (DLF,HYF,IEF)  
 VPI RED BULL D614 (DLF,HYF,IEF,MSUDF) NJW 76S 4037 DURANGO SPIRIT 174X (DLF,HYF,IEF,DBF)  
**WCF DAISY 1902 (MDP)** DR CLASSY LADY 10H 804 (DLF,HYF,IEF)  
 P44116103 OBF SUMMER 04C (MDP) NJW 73S W18 HOMEGROWN 8Y ET (S00)(DLF,HYF,IEF,MSUDF,MDF,DBF)  
 STAR SIS ROCKN DA BABY 118Y ET (DLF,HYF,IEF)

CE	BW	WW	YW	SCF	MM	M&G	MCW
11.6	0.0	45	82	12.3	30	53	78
UDDR	TEAT	FAT	REA	MARB	BMI\$	CHB\$	
1.30	1.20	0.043	0.43	0.08	288	113	

This traditionally marked Nightcap heifer will make an easy calving excellent mother, just like her dam who calves easy and breeds back right away without fail.

Consigned by: Creek Bend Farms, Robert Meek, Marion, VA, 276-698-0548

**LOT 27**  
**COW**

**BBF T'S LEGACY LEADER G14 (DLF,HYF,IEF,MSUDF,MDF)**

P44098798 — Calved: 9/19/19 — Tattoo: RE BBF/LE G14

HYALITE ON TARGET 936 (S00)(DLF,HYF,IEF,MSUDF) SCHU-LAR ON TARGET 22S (S00)(CHB)(DLF,HYF,IEF,MSUDF,MDF,DBF)  
**R LEADER 6964** (S00)(DLF,HYF,IEF,MSUDF,DBF) HYALITE TS LASS 310 (DLF,HYF,IEF)  
 P43500058 R MISS REVOLUTION 1009 (S00)(DLF,HYF,IEF,DBP) MSU TCF REVOLUTION 4R (S00)(DLF,HYF,IEF,MDF,DBF)  
 R MISS WRANGLER 3007  
 EFBEEF SCHU-LAR PROFICIENT N093 (S00)(DLF,HYF,IEF,MSUDF) BAR JZ TRADITION 434V (S00)(DLF,HYF,IEF)  
**BBF MISS PROFICIENT C27** GERBER 117F DIXIE 009K (DLF,HYF,IEF)  
 P43643091 BBF MISS LEGEND T35 FELTONS LEGEND 242 (S00)(HYF)  
 BBF MISS 3008 P606 39R (S00)

CE	BW	WW	YW	SCF	MM	M&G	MCW
1.4	1.0	59	87	21.6	25	55	106
UDDR	TEAT	FAT	REA	MARB	BMI\$	CHB\$	
1.40	1.40	0.073	0.30	0.05	411	90	

G14 was one of my first cows. She is a great mamma and always produces amazing animals!  
 Bred AI to HB Distinct, then pasture exposed to Mantews F597 Big Rock 96M.  
 Consigned by: Hereford Meadow Farm, Rory Dunavant, Barboursville, VA, 434-466-3845



Lot 27 — BBF T'S LEGACY LEADER G14

**LOT 30**  
**COW**

**CBF MAGGIE 7256 008L**

P44611481 — Calved: 10/24/23 — Tattoo: LE 008L

LJS MARK DOMINO 1321 (S00)(CHB)(DLF,HYF,IEF,MSUDF,MDF,DBF) LJS MARK DOMINO 0945 (S00)(CHB)(DLF,HYF,IEF,MSUDF)  
**CHURCHILL NIGHTCAP 7256E** (DLF,HYF,IEF,MSUDF,MDF,DBF) LJS MS MARK DOMINO 1125 (DLF,HYF,IEF)  
 43802046 CHURCHILL LADY 302A (DLF,HYF,IEF) CLT DOMINO 144Y 1ET (DLF,HYF,IEF)  
 CHURCHILL LADY 9134W (DLF,HYF,IEF)  
 KCF BENNETT HOMELAND C34 (S00)(DLF,HYF,IEF,MSUDF,MDF,DBF) NJW 73S W18 HOMETOWN 10Y ET (S00)(CHB)(DLF,HYF,IEF,MSUDF,MDF)  
**DR MRF HOME COOKIN C34 F45 ET** KCF MISS PROFICIENT A47 (DLF,HYF,IEF,DBP)  
 P43910789 DR SWEET ADELINA A260 D49 ET (DLF,HYF,IEF,MSUDF) KCF BENNETT BLOODLINE A260 ET (DLF,HYF,IEF,MSUDF,MDF)  
 DR LADY OF CLASS 10H S08 (DLF,HYF,IEF,MSUDF)

CE	BW	WW	YW	SCF	MM	M&G	MCW
1.9	3.6	60	104	17.0	33	63	91
UDDR	TEAT	FAT	REA	MARB	BMI\$	CHB\$	
1.40	1.30	0.033	0.47	0.10	363	117	

This Nightcap heifer out of a Homeland C34 daughter has been one of our favorites in a group of exceptional heifers. She should develop into the kind of cow you can build a herd around. We should be keeping this one, but our loss is your gain.

Consigned by: Creek Bend Farms, Robert Meek, Marion, VA, 276-698-0548

**LOT 31 WCF ROSA 2401** {HYP,DBP}

P44529831 — Calved: 1/14/24 — Tattoo: RE WCF/LE 2401

LOEWEN GRADY B42 G15 ET (CHB) (DLF,HYF,IEF,MSUDF,MDF,DBF)  
**KCF BENNETT GRADY J79** (CHB) (DLF,HYF,IEF,MSUDF)  
 P44267434 KCF MISS 2107 B151 (000) (DLF,HYF,IEF,MDF,DBF)

BBF CHUCKY33 (DLF,HYF,IEF)  
**BBF MISS REVOLUTIONS B16** (HYP,DBP)  
 P43473020 BBF MISS REVOLUTION Y4 (HYP,DBP)

TH 122 711 VICTOR 719T (S00) (DLF,HYF,IEF,MSUDF,MDF,DBF)  
 QUAKER HILL VICTORIA 3008 2M1 (000) (DLF,HYF,IEF)  
 MSU TCF REVOLUTION 4R (S00) (DLF,HYF,IEF,MDF,DBF)  
 BBF MISS PROFICIENT U2 (000) (HYP)

CE	BW	WW	YW	SCF	MM	M&G	MCW
8.2	0.5	57	95	17.4	23	52	94
UDDR	TEAT	FAT	REA	MARB	BMI\$	CHB\$	
1.30	1.40	0.013	0.54	0.25	379	137	

• Nice brood cow prospect. Super quiet and easy going heifer.  
 Consigned by: Whispering Cedars Farm, Andy Tutwiler, Mt Sidney, VA, 540-830-9490

**LOT 32 WCF MISSY 2404** {DBP}

P44638589 — Calved: 9/2/24 — Tattoo: RE WCF/LE 24404

LOEWEN GRADY B42 G15 ET (CHB) (DLF,HYF,IEF,MSUDF,MDF,DBF)  
**KCF BENNETT GRADY J79** (CHB) (DLF,HYF,IEF,MSUDF)  
 P44267434 KCF MISS 2107 B151 (000) (DLF,HYF,IEF,MDF,DBF)

MSU TCF REVOLUTION 4R (S00) (DLF,HYF,IEF,MDF,DBF)  
**MRF MOLLY 4R D25** (DBP)  
 P432673935 MRF SPIRIT 45P B198

FELTONS LEGEND 242 (S00) (HYP)  
 MSU TCF RACHAEL ET 54N (DLF,HYF,IEF,DBP)  
 NIW FHF 9710 TANK 45P (S00) (DLF,HYF,IEF,MDF)  
 DR DUNROVIN DELIGHT 774 UROZET

CE	BW	WW	YW	SCF	MM	M&G	MCW
3.0	1.8	61	96	15.7	24	55	93
UDDR	TEAT	FAT	REA	MARB	BMI\$	CHB\$	
1.30	1.30	0.013	0.68	0.20	355	132	

• Flashy dark red heifer.  
 Consigned by: Whispering Cedars Farm, Andy Tutwiler, Mt Sidney, VA, 540-830-9490



Lot 33 — MANTEWS H642 ROCKFORD 102L

**LOT 33 MANTEWS H642 ROCKFORD 102L** (DLF,HYF,IEF,MSUDF,MDF,DBF)

P44500929 — Calved: 10/6/23 — Tattoo: LE 102L

R LANDMARK 4386 (S00) (CHB) (DLF,HYF,IEF,MSUDF,MDF,DBF)  
**KCF BENNETT BEDROCK H642** (CHB) (DLF,HYF,IEF,MSUDF,MDF,DBF)  
 P44250089 KCF MISS CUDA F565 (DLF,HYF,IEF,MSUDF)

KCF BENNETT BEDFORD E177 (CHB) (DLF,HYF,IEF)  
**KCF MISS BEDFORD J587** (DLF,HYF,IEF,MSUDF,MDF,DBF)  
 P44320281 KCF MISS EXCEDE F11 (DLF,HYF,IEF)

HYALITE ON TARGET 936 (S00) (DLF,HYF,IEF,MSUDF)  
 R MISS REVOLUTION 3032 (000) (DLF,HYF,IEF,MSUDF,MDF,DBF)  
 BEHM 100W CUDA 504C (S00) (CHB) (DLF,HYF,IEF,MSUDF,MDF,DBF)  
 KCF MISS 2107 B629 (000) (DLF,HYF,IEF,MDF,DBF)

BEHM 100W CUDA 504C (S00) (CHB) (DLF,HYF,IEF,MSUDF,MDF,DBF)  
 KCF MISS PROFICIENT Z8 (DLF,HYF,IEF)  
 MOHICAN THM EXCEDE Z426 (S00) (DLF,HYF,IEF,MSUDF,MDF,DBF)  
 KCF MISS BLOODLINE D199 (DLF,HYF,IEF,MSUDF)

CE	BW	WW	YW	SCF	MM	M&G	MCW
7.9	0.6	71	107	16.3	37	73	60
UDDR	TEAT	FAT	REA	MARB	BMI\$	CHB\$	
1.50	1.50	0.033	0.72	0.28	379	153	

• Son of KCF BENNETT BEDROCK H642 (44250089) out of one of our favorite cows, HHF DARLA 183F 9DFJ (P44306144). He served as our clean-up bull this year. Twelve EPD traits in the top 15 percentile plus 10% for CHB. DNA tested Homozygous polled.  
 Consigned by: Mantews Farm, Larry Swetnam, Barbourville, VA, 859-229-2232

**LARRY SWETNAM**

**(540) 661-8233**

**(859) 229-2232**

**LARRY@SWETNAM.NET**



**EDIE SWETNAM**

**(859) 553-4204**

**EDIE@SWETNAM.NET**

Mantews Herefords'  
Genetic Philosophy

We feel that if you can come into the world with ease, grow rapidly with minimal input, have an outstanding carcass and be able to pass these traits along to offspring when appropriate, you might be a Mantews Hereford.

LET'S TALK  
HEREFORDS

Give, us a call and/or come visit, we might have what you need to get you closer to your herd goals.

Find us on Facebook

**MantewsHerefords.com**



**LOT 34 DR MAMADI D1 G08** {DLF,HYF,IEF,MSUDF,MDF,DBF}

P44026347 - Calved: 3/8/19 - Tattoo: LE G08

KCF BENNETT ENCORE Z311 ET (S00)(CHB)(DLF,HYF,IEF,MSUDF,MDF,DBF) SCHU-LAR ON TARGET Z2S (S00)(CHB)(DLF,HYF,IEF,MSUDF,MDF,DBF)  
 MPH Z311 RAMPAGE D1 (S00)(CHB)(DLF,HYF,IEF,MSUDF,MDF,DBF) KCF MISS REVOLUTION X338 ET (DLF,HYF,IEF,DBP)  
 P43696424 RHF 0124 ROSIE 3023A (000)(DLF,HYF,IEF) RST TIMES A WASTIN 0124 (S00)(DLF,HYF,IEF)  
 MSU TCF REVOLUTION 4R (S00)(DLF,HYF,IEF,MDF,DBC) FELTONS LEGEND 242 (S00)(HYF)  
**DR MISS REVOLUTION D06** (DLF,HYF,DBP) MSU TCF RACHAEL ET 54N (DLF,HYF,IEF,DBP)  
 P43770978 VICTRA'S GIRL (DLF,HYF) TH 122 711 VICTOR 719T (S00)(DLF,HYF,IEF,MSUDF,MDF,DBF)  
 PCF R117 VICTRA T15 Y7 (DLF,HYF)

CE	BW	WW	YW	SCF	MM	M&G	MCW
6.2	0.0	60	87	16.7	36	66	97
UDDR	TEAT	FAT	REA	MARB	BMI\$	CHB\$	
1.30	1.30	0.023	0.66	0.29	383	141	

- G08 produces a great calf every year. We hate to see her go.
  - Bred AI to NJW 133A 6589 Manifest 87G ET (44057384) on 12/9/24, then pasture exposed to Mantews H642 Rockford 102L (44500929) from 12/23/24 to sale date.
- Consigned by: Mantews Farm, Larry Swetnam, Barboursville, VA, 859-229-2232



Lot 34 - DR MAMADI D1 G08

**LOT 34A MANTEWS 9023 AVA 119M** {DLF,HYF,IEF,MSUDF,MDF,DBF}

P44609158 - Calved: 11/11/24 - Tattoo: LE 119M

KT SMALL TOWN KID 5051 (S00)(CHB)(DLF,HYF,IEF,MSUDF,MDF,DBF) NJW 73S W18 HOMETOWN 10Y ET (S00)(CHB)(DLF,HYF,IEF,MSUDF,MDF,DBF)  
 RST 5051 SMALL TOWN KID 9023 (DLF,HYF,IEF,MSUDF,MDF,DBF) KT MS 0124 TIMES A WASTIN 2086 (000)(DLF,HYF,IEF)  
 P44039432 RST MS 4180 REVOLUTION 7054 (DLF,HYF,IEF,DBP) RST X51 REVOLUTION 4180 (CHB)(DLF,HYF,IEF,DBP)  
 MPH Z311 RAMPAGE D1 (S00)(CHB)(DLF,HYF,IEF,MSUDF,MDF,DBF) KCF BENNETT ENCORE Z311 ET (S00)(CHB)(DLF,HYF,IEF,MSUDF,MDF,DBF)  
**DR MAMADI D1 G08** (DLF,HYF,IEF,MSUDF,MDF,DBF) RHF 0124 ROSIE 3023A (000)(DLF,HYF,IEF)  
 P44026347 DR MISS REVOLUTION D06 (DLF,HYF,DBP) MSU TCF REVOLUTION 4R (S00)(DLF,HYF,IEF,MDF,DBC)  
 VICTRA'S GIRL (DLF,HYF)

CE	BW	WW	YW	SCF	MM	M&G	MCW
13.3	-1.6	58	84	18.4	26	55	81
UDDR	TEAT	FAT	REA	MARB	BMI\$	CHB\$	
1.60	1.70	0.033	0.70	0.36	401	147	

- Daughter of RST 5051 Small Town Kid 9023 (44039432). Five EPD traits in the top 10 percentile and 14% CHB.
  - Sells open.
- Consigned by: Mantews Farm, Larry Swetnam, Barboursville, VA, 859-229-2232



Lot 34A - MANTEWS 9023 AVA 119M

**LOT 35 DR HOME COOKIN C34 G01** {DLF,HYF,IEF,MSUDF,MDF,DBF}

P44006180 - Calved: 1/3/19 - Tattoo: LE G01

NJW 73S W18 HOMETOWN 10Y ET (S00)(CHB)(DLF,HYF,IEF,MSUDF,MDF,DBF) SHF WONDER M326 W18 ET (S00)(CHB)(DLF,HYF,IEF,MDF,DBF)  
 KCF BENNETT HOMELAND C34 (S00)(CHB)(DLF,HYF,IEF,MSUDF,MDF,DBF) NJW P606 72N DAYDREAM 73S (DLF,HYF,IEF,MSUDF,MDF,DBF)  
 P43601153 KCF MISS PROFICIENT A47 (DLF,HYF,IEF,DBP) EFBEEF SCHU-LAR PROFICIENT N093 (S00)(DLF,HYF,IEF,MSUDF)  
 ILR RED POWER 456B (S00)(DLF,HYF,IEF,MSUDF,MDF,DBF) CHURCHILL RED BULL 200Z (S00)(DLF,HYF,IEF,MSUDF,MDF,DBF)  
**FSL POWER LADY 456B 2Y 6E** (DBP) KCF MISS PROFICIENT U201 (DLF,HYF,IEF,MSUDF,MDF,DBF)  
 P43789866 FSL REVOLUTIONARY MISS 2Y (DLF,HYF,IEF,DBP) MSU TCF REVOLUTION 4R (S00)(DLF,HYF,IEF,MDF,DBC)  
 FSL MISS RIBEYER17 4W (HYF)

CE	BW	WW	YW	SCF	MM	M&G	MCW
7.0	1.9	54	86	23.2	28	55	90
UDDR	TEAT	FAT	REA	MARB	BMI\$	CHB\$	
1.50	1.60	0.013	0.73	0.20	455	119	

- G01 is the kind of cow who breeds the first time to AI and produces an excellent calf without any special care or attention. CE 20%, MCE 9%, UDDR 2%, TEAT 1%, REA 11% and \$BII 14%. Homozygous Polled!
  - Bred AI to KCF Bennett Monument J338 (44320126) on 12/9/24, then pasture exposed to Mantews H642 Rockford 102L (44500929) from 12/23/24 to sale date.
- Consigned by: Mantews Farm, Larry Swetnam, Barboursville, VA, 859-229-2232



Lot 35 - DR HOME COOKIN C34 G01

**LOT 36 MANTEWS 0558 LADY BIRD 104L** {DLF,HYF,IEF,MSUDF,MDF,DBF}

P44500918 - Calved: 10/14/23 - Tattoo: LE 104L

CHURCHILL RED BARON 8300F ET (DLF,HYF,IEF,MSUDF,MDF,DBF) R LEADER 6964 (S00)(DLF,HYF,IEF,MSUDF,DBF)  
 BIRDWELL REDBIRD 7098 0558ET (CHB)(DLF,HYF,IEF,MSUDF,MDF,DBF) CHURCHILL LADY 500C ET (DLF,HYF,IEF,MDF,DBF)  
 P44254851 BR VALIDATED 8413 6035 7098 (DLF,HYF,IEF,MDF,DBF) EFBEEF BR VALIDATED 8413 (S00)(CHB)(DLF,HYF,IEF,MSUDF,MDF,DBF)  
 BEHM 100W CUDAS 504C (S00)(CHB)(DLF,HYF,IEF,MSUDF,MDF,DBF) NJW 73S M326 TRUST 100W ET (S00)(CHB)(DLF,HYF,IEF,MSUDF,MDF,DBF)  
**PPF LADY F7** (DLF,HYF,IEF,MSUDF,MDF,DBF) BEHM R294 JASMAN102Y (000)(DLF,HYF,IEF,MSUDF)  
 P43943222 BFB SUFFICIENT LADY Y12 EFBEEF SCHU-LAR PROFICIENT N093 (S00)(DLF,HYF,IEF,MSUDF)  
 BFB SHEZA LADY N2 (000)

CE	BW	WW	YW	SCF	MM	M&G	MCW
5.4	0.5	68	106	14.3	27	61	72
UDDR	TEAT	FAT	REA	MARB	BMI\$	CHB\$	
1.40	1.30	0.003	0.44	0.36	330	134	

- Daughter of Birdwell Redbird 7098 0558ET (44254851). Homozygous Polled!
  - Bred AI to KCF Bennett Monument J338 (44320126) on 12/9/24, then pasture exposed to Mantews H642 Rockford 102L (44500929) from 12/23/24 to sale date.
- Consigned by: Mantews Farm, Larry Swetnam, Barboursville, VA, 859-229-2232



Lot 36 - MANTEWS 0558 LADY BIRD 104L



Lot 37 — ROOKER PRIDE 2425

**LOT 37 HEIFER** **ROOKER PRIDE 2425**

P44641025 — Calved: 4/10/24 — Tattoo: BE 2425

SHF DAYBREAK Y02 D287 ET (C)(H)(D)(F)(J)(S)(U)(M)(D)(F)(B)(F)  
**SHF HOUSTON D287 H086** (C)(H)(D)(F)(J)(S)(U)(M)(D)(F)(B)(F)  
 P44123641 SHF MISS 14 20Z D223 (D)(L)(F)(J)(S)(U)(M)(D)(F)(B)(F)

SHF YORK19H Y02 (S)(D)(C)(H)(D)(F)(J)(S)(U)(M)(D)(F)(B)(F)  
 SHF MISS M326 T08 ET (D)(L)(F)(J)(S)(U)(M)(D)(F)(B)(F)  
 LOEWEN 4X 6X 20Z (D)(B)(P)  
 SHF RADAR R125 T75 (D)(L)(F)(J)(S)(U)(M)(D)(F)(B)(F)

OCFV REBEL YELL 1907 ET (D)(L)(F)(J)(S)(U)(M)(D)(F)(B)(F)  
**OCFV REBELS PRIDE 13K** (M)(D)(F)(B)(F)  
 44336953 OCFV TIMES UP 9176 ET (D)(B)(P)

GOLDEN OAK OUTCROSS 18U (S)(D)(C)(H)(D)(F)(J)(S)(U)(M)(D)(F)(B)(F)  
 BR RH GABRIELLE 5524 ET (D)(L)(F)(J)(S)(U)(M)(D)(F)(B)(F)  
 CRR ABOUT TIME 743 (S)(D)(D)(L)(F)(J)(S)(U)(M)(D)(F)(B)(F)  
 OCFV EVA ET (D)(L)(F)(J)(S)(U)(M)(D)(F)(B)(F)

CE	BW	WW	YW	SCF	MM	M&G	MCW
0.5	3.7	73	119	1.5	27	64	115
UDDR	TEAT	FAT	REA	MARB	BMI\$	CHB\$	
1.40	1.30	0.013	0.93	0.13	393	155	

• Pride 2425 is a really exciting young show and cow prospect. Her productive dam is a beautiful young cow with a great udder. Halter broke!  
 Consigned by: Rooker Cattle, Kevin Rooker, Smock, PA, 724-332-1576

**LOT 38 COW** **ROOKER REMI 2447**

Pending — Calved: 7/3/24 — Tattoo: BE 2447

NIW 73S M326 TRUST 100W ET (S)(D)(C)(H)(D)(F)(J)(S)(U)(M)(D)(F)(B)(F)  
**BEHM 100W CUD4 504C** (S)(D)(C)(H)(D)(F)(J)(S)(U)(M)(D)(F)(B)(F)  
 P43636764 BEHM R294 JASMAN102Y (D)(D)(D)(L)(F)(J)(S)(U)(M)(D)(F)(B)(F)  
 KCF BENNETT 3008 M326 (S)(D)(C)(H)(D)(F)(J)(S)(U)(M)(D)(F)(B)(F)  
 NIW P606 72N DAYDREAM 73S (D)(L)(F)(J)(S)(U)(M)(D)(F)(B)(F)  
 KCF BENNETT 91261 R294 (S)(D)(D)(L)(F)(J)(S)(U)(M)(D)(F)(B)(F)  
 CPH MS WRANGLER 1W (D)(D)(D)

PURPLE RGR MOONSHINE 104E (D)(L)(F)(J)(S)(U)(M)(D)(F)(B)(F)  
**PURPLE RGR REMI 113J** (D)(B)(P)  
 44301560 PURPLE RRD RUBY 41X (D)(L)(F)(J)(S)(U)(M)(D)(F)(B)(F)

UPS SENSATION 2296 ET (S)(D)(D)(L)(F)(J)(S)(U)(M)(D)(F)(B)(F)  
 PURPLE MAGNOLIA 93B ET (D)(L)(F)(J)(S)(U)(M)(D)(F)(B)(F)  
 JCS SHOWTIME (D)(L)(F)(J)(S)(U)(M)(D)(F)(B)(F)  
 PURPLE CLOVER L25T (D)(L)(F)(J)(S)(U)(M)(D)(F)(B)(F)

	CE	BW	WW	YW	SCF	MM	M&G	MCW
Sire:	10.1	-0.4	70	111	9.0	38	73	64
Dam:	-1.7	4.4	62	96	13.8	32	63	102
	UDDR	TEAT	FAT	REA	MARB	BMI\$	CHB\$	
Sire:	1.30	1.20	-0.017	0.53	0.47	271	159	
Dam:	1.20	1.20	0.003	0.57	0.03	327	119	

• Remi is just a July heifer that has a tremendous look along with the structure and power that we all search for. She is good at the ground, awesome bellied and elegant about her head and neck. Tremendous Cuda daughter with a world of future.  
 Consigned by: Rooker Cattle, Kevin Rooker, Smock, PA, 724-332-1576

**LOT 39 HEIFER** **ROOKER KUMBA 2434**

Pending — Calved: 4/28/24 — Tattoo: BE 2434

SHF DAYBREAK Y02 D287 ET (C)(H)(D)(F)(J)(S)(U)(M)(D)(F)(B)(F)  
**SHF HOUSTON D287 H086** (C)(H)(D)(F)(J)(S)(U)(M)(D)(F)(B)(F)  
 P44123641 SHF MISS 14 20Z D223 (D)(L)(F)(J)(S)(U)(M)(D)(F)(B)(F)

SHF YORK19H Y02 (S)(D)(C)(H)(D)(F)(J)(S)(U)(M)(D)(F)(B)(F)  
 SHF MISS M326 T08 ET (D)(L)(F)(J)(S)(U)(M)(D)(F)(B)(F)  
 LOEWEN 4X 6X 20Z (D)(B)(P)  
 SHF RADAR R125 T75 (D)(L)(F)(J)(S)(U)(M)(D)(F)(B)(F)

SPEARHEAD X51 COMMANDER D29 (D)(L)(F)(J)(S)(U)(M)(D)(F)(B)(F)  
**KCL D29 GLORY 29G** (D)(B)(P)  
 P44015279 KCL 4R CARLITA 51B 29D (D)(B)(P)

KCF BENNETT REVOLUTION X51 (S)(D)(C)(H)(D)(F)(J)(S)(U)(M)(D)(F)(B)(F)  
 SPEARHEAD 4037 DURANGO GIRL Y79 (D)(B)(P)  
 MSU TCF REVOLUTION 4R (S)(D)(D)(L)(F)(J)(S)(U)(M)(D)(F)(B)(F)  
 KCL 88X CARLITA 28U 51B ET

	CE	BW	WW	YW	SCF	MM	M&G	MCW
Sire:	0.6	3.5	85	139	18.9	30	73	126
Dam:	2.1	3.4	62	95	14.1	22	53	95
	UDDR	TEAT	FAT	REA	MARB	BMI\$	CHB\$	
Sire:	1.40	1.30	0.033	1.32	0.28	472	202	
Dam:	1.30	1.30	0.013	0.66	0.19	325	122	

• This late April Houston daughter has a world of potential. Her mother is a very consistent producer and one of better cows we own. She is short marked, well bred, and has that brood cow look.  
 Consigned by: Rooker Cattle, Kevin Rooker, Smock, PA, 724-332-1576



Lot 40 — TUDOR HALL CREST MISS M168

**LOT 40 HEIFER** **TUDOR HALL CREST MISS M168**

P44576142 — Calved: 2/27/24 — Tattoo: RE M168

BEHM 100W CUD4 504C (S)(D)(C)(H)(D)(F)(J)(S)(U)(M)(D)(F)(B)(F)  
**KCF BENNETT 504C H488** (C)(H)(D)(F)(J)(S)(U)(M)(D)(F)(B)(F)  
 P44249941 KCF MISS DEVOUT E678 (D)(D)(D)(L)(F)(J)(S)(U)(M)(D)(F)(B)(F)

NIW 73S M326 TRUST 100W ET (S)(D)(C)(H)(D)(F)(J)(S)(U)(M)(D)(F)(B)(F)  
 BEHM R294 JASMAN102Y (D)(D)(D)(L)(F)(J)(S)(U)(M)(D)(F)(B)(F)  
 KCF BENNETT DEVOUT B716 ET (S)(D)(D)(L)(F)(J)(S)(U)(M)(D)(F)(B)(F)  
 KCF MISS 10Y C527 (D)(L)(F)(J)(S)(U)(M)(D)(F)(B)(F)

CHFTTF 4007 BEEF 6044 (D)(L)(F)(J)(S)(U)(M)(D)(F)(B)(F)  
**TUDOR HALL BEEF MISS H20**  
 P44154021 TUDOR HALL PROFICIENT MISS C62 (D)(L)(F)(J)(S)(U)(M)(D)(F)(B)(F)

BOYD BEEF 17Y 4007 (D)(L)(F)(J)(S)(U)(M)(D)(F)(B)(F)  
 CHFTTF 100W BRAXIE 3561 ET (H)(P)(P)  
 RH 477 PROFICIENT N093 Y04 (D)(L)(F)(J)(S)(U)(M)(D)(F)(B)(F)  
 RH AMERICA S14 MISS Y29 (H)(P)(P)

CE	BW	WW	YW	SCF	MM	M&G	MCW
14.8	-2.9	44	72	17.8	29	51	55
UDDR	TEAT	FAT	REA	MARB	BMI\$	CHB\$	
1.20	1.20	0.023	0.34	0.37	372	129	

• This short-marked, goggle-eyed heifer is a good calving ease daughter out of our Knoll Crest calving ease specialist H488. M168's dam is sired by our Cottage Hill bull we used for a number of years and good maternal cows back on the bottom side. She sells halter broke on sale day.  
 Consigned by: Tudor Hall Farm, Joseph and Katilin Grantham, Kearneysville, WV, 304-261-9505



Lot 41 — TUDOR HALL CREST PROMISE M171

**LOT 41 HEIFER** **TUDOR HALL CREST PROMISE M171**

P44576139 — Calved: 3/6/24 — Tattoo: LE M171

BEHM 100W CUD4 504C (S)(D)(C)(H)(D)(F)(J)(S)(U)(M)(D)(F)(B)(F)  
**KCF BENNETT 504C H488** (C)(H)(D)(F)(J)(S)(U)(M)(D)(F)(B)(F)  
 P44249941 KCF MISS DEVOUT E678 (D)(D)(D)(L)(F)(J)(S)(U)(M)(D)(F)(B)(F)

NIW 73S M326 TRUST 100W ET (S)(D)(C)(H)(D)(F)(J)(S)(U)(M)(D)(F)(B)(F)  
 BEHM R294 JASMAN102Y (D)(D)(D)(L)(F)(J)(S)(U)(M)(D)(F)(B)(F)  
 KCF BENNETT DEVOUT B716 ET (S)(D)(D)(L)(F)(J)(S)(U)(M)(D)(F)(B)(F)  
 KCF MISS 10Y C527 (D)(L)(F)(J)(S)(U)(M)(D)(F)(B)(F)

CHFTTF 4007 BEEF 6044 (D)(L)(F)(J)(S)(U)(M)(D)(F)(B)(F)  
**TUDOR HALL BEEF PROMISE H21** (D)(L)(F)(J)(S)(U)(M)(D)(F)(B)(F)  
 P44154022 TUDOR HALL PROFICIENT PROMISE (D)(L)(F)(J)(S)(U)(M)(D)(F)(B)(F)

BOYD BEEF 17Y 4007 (D)(L)(F)(J)(S)(U)(M)(D)(F)(B)(F)  
 CHFTTF 100W BRAXIE 3561 ET (H)(P)(P)  
 RH 477 PROFICIENT N093 Y04 (D)(L)(F)(J)(S)(U)(M)(D)(F)(B)(F)  
 RH CLASSY W19 MISS Y16 (H)(P)(P)

CE	BW	WW	YW	SCF	MM	M&G	MCW
14.9	-2.8	47	76	18.0	31	54	75
UDDR	TEAT	FAT	REA	MARB	BMI\$	CHB\$	
1.10	1.10	0.013	0.37	0.36	381	132	

• M171 is a calving ease specialist out of our calving ease Knoll Crest bull H488. Her dam is sired by a Cottage Hill bull that did a good job for us and a line of good productive cows on the bottom side. She sells halter broke on sale day.  
 Consigned by: Tudor Hall Farm, Joseph and Katilin Grantham, Kearneysville, WV, 304-261-9505



# COMMERCIAL HEIFERS



Lot 43 — HHF LAWSON'S AUDREY M7

## LOT 42 ANGUS BRED HEIFER

Calved: 10/23/23  
• Pasture exposed to Hereford bull (44320220)  
*Consigned by: West Ray Farm, Justin Aronhalt, Bumpass, VA, 804-836-2678*

## LOT 43 HHF LAWSON'S AUDREY M7

Calved: 3/3/24 — Tattoo: HHF  
• Act. BW 92 lb.; Act. WW 600 lb.; YW available day of sale. M7 is out of one of our favorite Hereford cows and sired by our registered Angus herd bull. She is a top pick out of our best group of baldie heifers we have raised. She is a powerhouse heifer with looks to match.  
• She sells open, ready to breed and is up to date on all vaccinations.  
*Consigned by: Howling Hounds Farm, Lawson Family, Columbia, VA, 804-514-0297*

## LOT 44 BLACK BALDY OPEN HEIFER

Calved: 4/4/24 — Tattoo: 17M  
• Sired by Deer Valley Chattooga 1424 out of a registered Hereford cow.  
*Consigned by: Hereford Hollow Farm, Joel and Amanda Blevins, Wytheville, VA, 276-759-1675*

## LOT 45 BLACK BALDY OPEN HEIFER

Calved: 4/19/24 — Tattoo: 23M  
• Sired by KCF Bennett G473 out of a purebred commercial Angus cow.  
*Consigned by: Hereford Hollow Farm, Joel and Amanda Blevins, Wytheville, VA, 276-759-1675*

## LOT 46 BLACK BALDY OPEN HEIFER

Calved: 3/7/24 — Tattoo: 431  
*Consigned by: Cottage Hill Farm, W. C. Taylor Family, Petersburg, WV, 304-257-0263 (David)*

## LOT 47 BLACK BALDY OPEN HEIFER

Calved: 2/10/24 — Tattoo: 447  
*Consigned by: Cottage Hill Farm, W. C. Taylor Family, Petersburg, WV, 304-257-0263 (David)*

## LOT 48 RED BALDY OPEN HEIFER

Calved: 2/15/24 — Tattoo: 449  
*Consigned by: Cottage Hill Farm, W. C. Taylor Family, Petersburg, WV, 304-257-0263 (David)*

## LOT 49 RED BALDY OPEN HEIFER

Calved: 2/8/24 — Tattoo: 453  
*Consigned by: Cottage Hill Farm, W. C. Taylor Family, Petersburg, WV, 304-257-0263 (David)*



SALE  
RING  
*.live*

## **Online Bidding**

Please visit [www.salering.live](http://www.salering.live) and  
click on [Login/Register](#).

First time users click [Register](#),  
enter your information and  
click [I agree to terms](#),  
then click [Next Step](#).

You will receive a confirmation email once  
information has been submitted.



# THE POWER OF GENOMICALLY ENHANCED EPDS

The American Hereford Association (AHA) has embraced the use of genomics into their genetic evaluation by launching a first of its kind single step analysis that utilizes the marker effects of specific traits. Likewise, AHA is directly estimating accuracy values rather than approximating. The direct estimation of accuracy results in a more conservative value but a more accurate value than previous methodologies. The AHA is producing the most reliable genetic evaluation that is supported by Whole Herd TPR™ and genomics, which will give prospective buyers added confidence in purchasing young and unproven animals.

Buying animals that have a genomic profile incorporated into their Expected Progeny Difference (EPD) offers many advantages that allow for quicker breed and herd improvement. To the right is a table showing the average increase in accuracy when buying a young animal with a Genomic Enhanced EPD (GE-EPD) versus an animal without a GE-EPD. Similarly, an effective progeny number increase is listed by trait that shows how many progeny equate to a genomic enhancement of a young animal (e.g. yearling). That's right, buying a young animal that has been genotyped is like having 2-17 progeny, depending on the trait. The proof gained on young, non-parent animals, through a genomic enhancement is valuable and greatly mitigates the risk and allows for more directed selection.

AHA TRAIT	ACCURACY IMPROVEMENT	EFFECTIVE PROGENY NUMBER INCREASE*
<b>CALVING EASE</b>	0.09	17
<b>BIRTH WEIGHT</b>	0.12	8
<b>WEANING WEIGHT</b>	0.14	12
<b>YEARLING WEIGHT</b>	0.16	9
<b>SCROTAL CIRCUMFERENCE</b>	0.17	6
<b>MATURE COW WEIGHT</b>	0.12	4
<b>UDDER SUSPENSION</b>	0.17	7
<b>TEAT SIZE</b>	0.17	7
<b>CARCASS WEIGHT</b>	0.11	3
<b>FAT</b>	0.08	2
<b>RIB-EYE AREA</b>	0.07	2
<b>MARBLING</b>	0.10	3

\* Effective Progeny Number Increase (EPNI)- EPNI is the difference gained for genotyped animals versus non-genotyped animals.

Each animal tested is recognized with the AHA GE-EPD logo.



AMERICAN HEREFORD ASSOCIATION  
[hereford.org](http://hereford.org) | (816) 842-3757

April 17, 2025 / Harrisonburg, VA / 12:30 p.m.

# THANK YOU TOMMY

## Thank you for the years of service to the Hereford breed and the Virginia Hereford Association and its members.

*The Virginia Hereford Association would like to thank Mr. Tommy Coley for all his years of service and help to the Association and our members. Tommy has worked tirelessly for all Hereford breeders during his tenure as Field Representative, and we are extremely grateful to him for all his hard work and dedication. Tommy has generously taken pictures for both our Fall and Spring Sale catalogs for many years and has shown endless patience with both animals AND consignors as he worked to get photos that best represented each animal. In addition, he has been a tremendous help during our sales, taking the time to visit with consignors and help them in marketing their animals, and serving as one of our ring men each sale.*

*In addition, Tommy has been a strong advocate for our Juniors, helping at many Junior shows and events. He has served as a ready ring help, checked tattoos, and supported the Juniors in many ways, and we truly appreciate his dedication to our youth and support of their activities.*

*Tommy, thank you for all your years of service and your friendship. While we will miss you (and can only hope that your replacement can fill your shoes), we wish you a long, happy and healthy retirement and hope that you will still make a few trips to Virginia to visit every now and then!*



# ADD VALUE

WITH FEEDER CATTLE & REPLACEMENT FEMALE PROGRAMS



### HEREFORD ADVANTAGE

An industry-changing feeder cattle marketing program through IMI Global to verify and add value to Hereford-influenced feeder cattle with superior genetics, health and management.



LEARN MORE ABOUT THESE PROGRAMS



### MATERNAL ADVANTAGE

A unique marketing program designed to add value to Hereford-sired commercial replacement females with added fertility, feed efficiency, profitability and docility.



### PREMIUM RED BALDY

Take advantage of hybrid vigor by maximizing the best traits of Hereford and Red Angus genetics that provide commercial producers with premium replacement females.



AMERICAN HEREFORD ASSOCIATION  
816.842.3757 | WWW.HEREFORD.ORG



# Consignors

Consignor	Contact Information	Lots
Harry Taylor		1A, 1B, 2A, 2B, 2C, 3
Deer Track Farm	Bob Schaffer, 540-661-2229	4, 5
Begoon Farm	JT, Laura Begoon and Family, Grottoes, VA 540-430-1716	6
Cottage Hill Farm	W. C. Taylor Family, Petersburg, WV, 304-257-0263 (David)	7, 8, 9, 10, 46, 47, 48, 49
Black Locust Livestock	Mike and Rebecca Webert, Mike 703-906-4667 or Rebecca 540-333-1019	11, 12, 13A, 13B
West Ray Farm	Justin Aronhalt, 804-836-2678	14, 14A, 15, 15A, 42
Bay Brook Farm	Rodney and Barbara Philips, 804-387-9447	16, 16A, 17, 17A
Howling Hounds Farm	Lawson Family, 804-514-0297	18, 43
Kidd Family Farm	Timothy and Tonya Kidd, 434-944-5127	19, 20
Hereford Hollow Farm	Joel and Amanda Blevins, 276-759-1675	21, 21A, 22, 23, 44, 45
Stone Ridge Manor	Daniel and Seth Snyder, Gettysburg, PA 240-447-4600 (Daniel), 240-405-6049 (Seth cell)	24, 25, 26
Hereford Meadow Farm	Rory Dunavant, 434-466-3845	27
Creek Bend Farms	Robert Meek, 276-698-0548	28, 29, 30
Whispering Cedars Farm	Andy Tutwiler, 540-830-9490	31, 32
Mantews Farm	Larry Swetnam, 859-229-2232	33, 34, 34A, 35, 36
Rooker Cattle	Kevin Rooker, 724-332-1576	37, 38, 39
Tudor Hall Farm	Joseph and Katilin Grantham, 304-261-9505	40, 41

# Terms and Conditions

- 1. Identification:** It shall be the obligation of the seller to determine that each animal sold carries a legible tattoo.
- 2. Bidding:** Each animal will be sold to the highest bidder. The auctioneer will settle any dispute as to bidding. His decision shall be final.
- 3. Terms:** All cattle must be paid for during or immediately after the sale and may not be moved before settlement has been made with the clerk, unless prior arrangements have been made with a member of the sale committee. Each animal will be at the purchaser's risk as soon as sold.
- 4. Corrections:** Corrections or additions of any information in the sale catalog will be announced from the auction block and such announcements will take precedence over any printed material.
- 5. Mail or Phone Bids:** May be sent to the auctioneer, sale day phone 540-333-1019 or any of the sale staff.
- 6. Registration Certificates:** Certificates will be transferred to the buyer. It is the responsibility of the buyer to give the correct name and address for making transfers. Calves born after the sale are to be registered by the purchaser. AI certificates will not be given on unborn calves unless otherwise stated by the consignor or if the consignor is the owner of co-owner of the AI bull.
- 7. Health:** All cattle selling will have health certificates for interstate shipment.
- 8. Guarantee:** The laws of the State of Virginia shall govern the validity of this sale, the construction of its terms, the interpretation of the rights, duties and obligations of the buyers and sellers, the enforcement of its terms, the remedies upon breach and all other matters relating to this sale. The exclusive venue and forum for any legal disputes between the parties shall be either in the Federal District Court for the eastern section of Virginia or in a state court of competent jurisdictional defenses that each may have to the institution of such an action in such courts.
- 9. Responsibility:** All persons attending the sale do so at their own risk. Neither the Virginia Hereford Association nor the Rockingham County Fairgrounds will in any way whatsoever assume liability, legal or otherwise, for any accidents or injuries that may occur.

Virginia Hereford Association  
118 Via Farm Lane  
Patrick Springs, VA 24133

# Mid-Atlantic *Spring Bonanza Sale*

*Sponsored and  
Hosted by*



**Thursday, *April 17, 2025* • 12:30 p.m.**

**Rockingham County Fairgrounds • Harrisonburg, VA  
In Conjunction with the Virginia Beef Expo**