

2025

AMERICAN HEREFORD ASSOCIATION

AI BOOK



SHF MAVERICK 2912 MI24 ET {DLF,HYF,IEF,MSUDF,MDF,DBF}



P44548670

Calved: 2/3/24 — Tattoo: BE MI24



CE	BW	WW	YW	DMI
5.2	1.8	71	113	0.6
SC	SCF	MM	M&G	MCE
1.7	23.3	33	68	4.7
MCW	UDDR	TEAT	CW	FAT
107	1.40	1.30	97	0.032
REA	MARB	BMIS	BIIS	CHBS
0.98	0.65	524	648	204

SEMEN: Availability and price to be set by the buyer on March 22.

KCF BENNETT RESOLVE G595 {CHB}{DLF,HYF,IEF,MSUDF,MDF,DBC}
BIRDWELL NEW STANDARD 2912 ET {DLF,HYF,IEF,MSUDF,MDF,DBF}
 P44358760 BR VALIDATED B413 6035 7098 {DLF,HYF,IEF,MDF,DBF}

SHF DAYBREAK Y02 D287 ET {CHB}{DLF,HYF,IEF,MSUDF}
SHF LACY D287 J054 ET {DLF,HYF,IEF,MSUDF,DBP}
 P44228229 SHF LACY Z311 E340 ET {DLF,HYF,IEF,DBP}

- Maverick might just have the genetics to maximize your herd's profit potential. This New Standard son is a unique spread bull from CED to Yearling, from Maternal to Carcass. This homo polled bull ranks in the top 1-2% for all both the Maternal index and Terminal index.
- We have flushed 6 out of 7 consecutive cow generations in this bull's cow family, and a maternal sister is scheduled to be flushed this spring. That would make 7 consecutive. They trace back to a heifer we bought 35 years ago, from Dale Lacy in MO.
- Will see heavy use at SHF due to his performance and cow family.
- Sells as Lot 1 in our March 22, 2025 sale.

SHF MANHATTAN H315 MI59 {DLF,HYF,IEF,MSUDF}



P44546766

Calved: 2/7/24 — Tattoo: BE M159



CE	BW	WW	YW	DMI
14.2	-0.6	59	104	0.9
SC	SCF	MM	M&G	MCE
1.9	18.6	36	66	3.2
MCW	UDDR	TEAT	CW	FAT
86	1.30	1.50	88	0.022
REA	MARB	BMIS	BIIS	CHBS
0.92	0.48	420	518	172

SEMEN: Availability and price to be set by the buyer on March 22.

SHF DAYBREAK Y02 D287 ET {CHB}{DLF,HYF,IEF,MSUDF}
SHF HEADSTRONG D287 H315 ET {CHB}{DLF,HYF,IEF,MSUDF,MDF,DBF}
 P44123822 SHF OKSANA 001A D03 ET {DLF,HYF,IEF,MDF,DBF}

NJW 33TB 100W TRUST 167Y {SOD}{CHB}{DLF,HYF,IEF,MSUDF,MDF}
SHF OKSANA I67Y G189 {DLF,HYF,IEF,MSUDF}
 P44003449 SHF OKSANA Z210 C40 ET {DLF,HYF,IEF,MSUDF,MDF,DBF}

- Manhattan is a top CED bull that combines growth, carcass and maternal.
- His cow family is double bred top and bottom to the Oksana cow family.
- The Headstrong daughters have calved here at SHF and we are very pleased with them.
- Sells as Lot 2 in our March 22, 2025 sale.



Sandhill Farms

Kevin and Vera Schultz
 Tyler and Hannah Schultz
 Haviland, KS 67059
 Kevin cell 620-546-4570
 kevin@sandhillfarms.com
 Tyler cell 620-546-1574
www.sandhillfarms.com

Make plans to attend the
Sandhill Production Sale
 on March 22, 2025.



SHF LEGO 569G L347 ET {DLF,HYF,IEF,MSUDF,MDF,DBF}

P44443177

Calved: 2/10/23 — Tattoo: BE L347

NJW 79Z Z311 ENDURE 173D ET {SOD}{CHB}{DLF,HYF,IEF,MSUDF,MDF,DBF}
CMF 1720 GOLD RUSH 569G ET {CHB}{DLF,HYF,IEF,MSUDF,MDF,DBF}
 P44108010 L III TFL C609 VICTORIA 1720 {DLF,HYF,IEF,MSUDF}

SHF DAYBREAK Y02 D287 ET {CHB}{DLF,HYF,IEF,MSUDF}
SHF MAGGIE D287 G012 ET {DLF,HYF,IEF,MSUDF,MDF,DBP}
 P44003326 SHF MAGGIE 001A C06 {DLF,HYF,IEF,MSUDF,DBP}

CE	BW	WW	YW	DMI	SC	SCF	MM	M&G	MCE
7.0	1.7	74	116	0.6	1.2	23.5	34	71	1.4
MCW	UDDR	TEAT	CW	FAT	REA	MARB	BMI\$	BIIS	CHBS
119	1.30	1.30	107	0.062	1.04	0.61	533	659	209



SEMEN: \$40/Straw; \$60/Certificate
 Contact Sandhill for semen.

- Lego is a performance curve bending combination bull. Calving Ease, Performance, Maternal and Carcass Merit. He puts all that into a deep ribbed, thick topped body with pigment, dark cherry red color and is homozygous.
- His dam has several other sons working in registered herds across the U.S., Canada, New Zealand and Australia.
- Lego will be used in the Sandhill and O'Reilly breeding programs. He was one of the highlights of the 2024 Sandhill Farms bull sale.



SHF MAGGIE D287 G012 ET
 Dam of L347



Kevin and Vera Schultz
 Tyler and Hannah Schultz
 Haviland, KS 67059
 Kevin cell 620-546-4570
 kevin@sandhillfarms.com
 Tyler cell 620-546-1574
www.sandhillfarms.com



Mark O'Reilly
 2715 W. Eseco Rd.
 Cushing, OK 74023
 805-459-1252
 drmor@pacbell.net



LOEWEN SANDHILL L70 ET {DLF,HYF,IEF,MSUDF,MDF,DBF}

P44455227

Calved: 1/29/23 — Tattoo: BE L70

LOEWEN GENESIS G16 ET {CHB}{DLF,HYF,IEF,MDF,DBF}

LOEWEN DCF DEFIANCE H49 ET {CHB}{DLF,HYF,IEF,MSUDF,MDF,DBF}

P44205419

LOEWEN MISS 994W 6X 7C {DLF,HYF,IEF,DBF}

EFBEEF C609 RESOLUTE E158 ET {CHB}{DLF,HYF,IEF,MDF,DBF}

SCHU-LAR 44J VIVIAN 26D E158 {DLF,HYF,IEF,MSUDF,MDF,DBF}

P44256562

SCHU-LAR 26D VIVIAN 209 A250 {DLF,HYF,IEF,MSUDF,MDF,DBF}

SEMEN PACKAGES AVAILABLE

\$5,000 for any combination of semen and certificates up to 50. Contact Sandhill for semen.

- Loewen Sandhill combines an excellent set of EPDs with an impressive phenotype. He is conservatively marked, fully pigmented and homo polled.
- He maternal sisters are among the top replacements at Loewen Herefords.
- Use this freckly faced bull to put more body in your calf crop with the genetic predictors to make them profitable.

CE	BW	WW	YW	DMI	SC	SCF	MM	M&G	MCE
6.4	2.5	65	104	0.4	1.3	26.5	23	56	0.3
MCW	UDDR	TEAT	CW	FAT	REA	MARB	BMI\$	BIIS	CHBS
91	1.50	1.60	85	0.112	0.61	0.71	546	674	186



SCHU-LAR 44J VIVIAN 26D E158

Dam of L70



Kevin and Vera Schultz
Tyler and Hannah Schultz
Haviland, KS 67059
Kevin cell 620-546-4570
kevin@sandhillfarms.com
Tyler cell 620-546-1574
www.sandhillfarms.com

PÉREZ
CATTLE COMPANY

Michael and Connie Pérez 575-403-7970
Kyle and Tonya Pérez 575-403-7971
9767 Quay Rd. O
Nara Visa, NM 88430
info@PerezCattleCo.com

perezcattleco.com

John and Mona Loewen
9815 South 66th St.
Waukomis, OK 73773
580-231-0683
John@loewenherefords.com

LOEWEN herefords



HUTH LHF BADGER K021 {DLF,HYF,IEF,MSUDF,MDF,DBF}

P44370493

Calved: 4/26/22 - Tattoo: LE K021/RE HUTH

NJW 160B 028X HISTORIC 81E ET {DLF,HYF,IEF,MSUDF,MDF,DBF}

H B DISTINCT {CHB}{DLF,HYF,IEF,MSUDF,MDF,DBF}

P44184682

H DS MISS SPICE 8082 {DLF,HYF,IEF,MSUDF,MDF,DBF}

/S MANDATE 66589 ET {DLF,HYF,IEF,MSUDF,MDF,DBF}

HUTH D080 MANDY H001 {DLF,HYF,IEF,MSUDF}

P44189426

HUTH T013 REVELLE D080 {DOD}{DLF,HYF,IEF,MSUDF}

CE	BW	WW	YW	DMI	SC	SCF	MM	M&G	MCE
7.5	1.0	76	120	0.6	1.7	24.3	44	82	1.0
MCW	UDDR	TEAT	CW	FAT	REA	MARB	BMI\$	BIIS	CHB\$
99	1.60	1.70	92	0.052	0.87	0.27	508	615	158



SEMEN: \$50/Straw; Non-Certificate
 Contact: Fred Larson 715-495-0837

- PERFORMANCE: Top 18% CE and BW; Top 2% WW; and Top 3% YW
- PRODUCTIVITY: Top 1% MM and M&G
- LONGEVITY: Top 1% TEAT; Top 5% UDDR; Top 5% SC
- CARCASS: Top 3% REA, BMI\$ and BIIS; Top 5% CW; Top 7% CHB\$; and Top 18% MARB
- On top of this documentation, Badger is homozygous polled and docile, with 100% pigment, smooth joints, fluid movement, perfectly shaped feet, proven genetics and great looks.
- Badger's first daughter offered for sale brought \$12,000.
- After his dam's records are added for her latest calf, she will qualify as the fifth consecutive Dam of Distinction in Badger's maternal lineage.



HUTH D080 MANDY H001
 Dam of Badger



N8494 110th St.
 Spring Valley, WI 54767
 715-495-0837
 Easten 715-495-6233
 Jerry 715-977-2817
www.larsonherefordfarms.com

Co-Owners:
S&H LIVESTOCK ENTERPRISES, LLC
HUTH POLLED HEREFORDS

YOUR SEMEN SOURCE



KCF BENNETT MONUMENT J338 (DLF,HYF,IEF,MSUDF,MDF,DBF) P44320126 - Calved: 9/10/21

KCF BENNETT DEVOUT B716 ET (SOD)(DLF,HYF,IEF,MDF,DBF)
KCF BENNETT B716 F597 (CHB)(DLF,HYF,IEF,MSUDF,MDF,DBF)
P43983894 KCF MISS REVOLUTION X322 ET (DOD)(DLF,HYF,IEF,MSUDF,MDF,DBF)

R LANDMARK 4386 (CHB)(DLF,HYF,IEF,MSUDF,MDF,DBF)
KCF MISS LANDMARK G301 (DLF,HYF,IEF,MSUDF,MDF,DBF)
P44105051 KCF MISS CUDA E368 (DLF,HYF,IEF)



SEMEN: \$50/straw; \$60/certificate CONTACT: Knoll Crest Farm

CE	BW	WW	YW	DMI	SC	SCF	MM	M&G	MCE	MCW	UDDR	TEAT	CW	FAT	REA	MARB	BMI\$	BI\$	CH\$
15.9	-4.0	67	103	0.7	1.3	24.5	46	80	12.4	51	1.40	1.50	97	0.042	0.76	0.65	525	648	196
1%	2%	13%	22%	95%	23%	5%	1%	1%	1%	3%	9%	4%	2%	75%	8%	1%	2%	1%	1%

- Homozygous Polled, 100% eye pigmentation, short marked, dark red.
- With 360 progeny ratioing 95 for birth weight, 207@101 WWR, 34@101 YWR, 22@107 IMF, 22@102 RE, he is truly becoming the "gold standard" for slam-dunk calving ease without sacrificing growth, phenotype, structural soundness or carcass merit. His maternal trait projections are also at the very top of the breed.
- Monument was the standout performer in his contemporary group, posting a 96 BWR, 119 WWR and 115 YWR. He is massively constructed, easy fleshing, athletic and nearly perfect footed.

- No animal in the Hereford population comes close to matching his unique combination of calving ease, growth, SCF, MCW, REA and Marbling.
- In addition, he ranks top 1-2% for all index values and has the distinction of ranking in the top 2% CW yet smallest 3% MCW.
- Owned with Four B Farm



SHF HEADSTRONG D287 H315 ET (CHB)(DLF,HYF,IEF,MSUDF,MDF,DBF) P44123822 - Calved: 2/10/20

SHF YORK 19H Y02 (SOD)(CHB)(DLF,HYF,IEF)
SHF DAYBREAK Y02 D287 ET (CHB)(DLF,HYF,IEF,MSUDF)
P43676330 SHF MISS M326 T08 ET (DLF,HYF,IEF)

GERBER ANODYNE 001A (SOD)(CHB)(DLF,HYF,IEF,MSUDF)
SHF OKSANA 001A D03 ET (DLF,HYF,IEF,MDF,DBF)
P43676150 SHF OKSANA 33T Y59 (DLF,HYF,IEF,DBP)



SEMEN: \$40/straw; \$50/certificate CONTACT: Knoll Crest Farm

CE	BW	WW	YW	DMI	SC	SCF	MM	M&G	MCE	MCW	UDDR	TEAT	CW	FAT	REA	MARB	BMI\$	BI\$	CH\$
6.1	2.2	79	123	1.1	2.2	19.7	34	73	1.2	138	1.30	1.40	95	0.012	1.01	0.34	443	553	162
27%	39%	1%	2%	100%	1%	28%	16%	3%	57%	100%	27%	12%	3%	28%	1%	10%	15%	10%	6%

- Homozygous Polled!
- Headstrong is a moderate statured, perfect footed, easy fleshing sire who delivers added pounds and muscle in an ultra-quiet, heavily pigmented package.

- His daughters in production are outstanding.
- His balance of CE, BW, WW, YW, SC, MARB AND REA is currently unmatched among Hereford sires.
- Headstrong's dam is one of the breed's most prolific herd sire producing females.
- Owned with Sandhill Farms



Paul S. Bennett 434-941-8245
Dalton G. Bennett 434-664-7946

Jim G. Bennett 434-664-7935
Brian R. Bennett 434-664-8309
Scott R. Bennett 434-660-7268

P.O. Box 117 | Red House, VA 23963 | Martha Johnson, Office Manager | 434-376-3567
knollcrest@knollcrestfarm.com | www.knollcrestfarm.com

YOUR SEMEN SOURCE



KCF BENNETT DOMINION K510 {DLF,HYF,IEF,MSUDF,MDF,DBF}

P44405363 - Calved: 9/23/22

SHF DAYBREAK Y02 D287 ET {CHB}{DLF,HYF,IEF,MSUDF}

SHF HOUSTON D287 H086 {CHB}{DLF,HYF,IEF,MSUDF,MDF,DBF}
P44123641

SHF MISS 14 20Z D223 {DLF,HYF,IEF,DBF}

R LANDMARK 4386 {CHB}{DLF,HYF,IEF,MSUDC,MDF,DBF}

KCF MISS LANDMARK G341 {DLF,HYF,IEF,MSUDF,MDF,DBF}
P44105083

KCF MISS X51 Z446 {DLF,HYF,IEF}



SEMEN: \$50/straw; \$60/certificate CONTACT: Knoll Crest Farm

CE	BW	WW	YW	DMI	SC	SCF	MM	M&G	MCE	MCW	UDDR	TEAT	CW	FAT	REA	MARB	BMI\$	BIIS	CHBS
7.2	1.0	79	131	0.9	1.8	23.2	33	72	6.1	115	1.60	1.60	108	0.062	1.16	0.31	510	620	181
20%	18%	1%	1%	99%	3%	8%	20%	4%	8%	92%	1%	1%	1%	91%	1%	13%	3%	2%	2%

- Homozygous Polled, heavily pigmented, short marked, dark red.
- Dominion was the standout of his calf crop, earning an 83# BW, 118 WWR, 116 YWR, 118 RER, 6.1 FS, 36 cm SC.
- No animal in the breed comes close to matching his combination of CED, BW, WW, YW, SC, SCF, Udder EPDs, CW, REA and Marbling.

- His prototype dam is arguably the most ideal cow at Knoll Crest, with a nearly perfect udder.
- Early progeny reports are excellent for calving ease, pigment and calf vigor.



KCF BENNETT EAGLE H550 {CHB}{DLF,HYF,IEF,MSUDF,MDF,DBF}

P44249999 - Calved: 9/28/20

EFBEEF TFL U208 TESTED X651 ET {SOD}{CHB}{DLF,HYF,IEF,MSUDF}

INNISFAIL WHR X651/723 4013 ET {CHB}{DLF,HYF,IEF,MSUDF,MDF}
P43541960

INNISFAIL P230 T723 {DLF,HYF,IEF,MSUDF}

BEHM 100W CUDA 504C {SOD}{CHB}{DLF,HYF,IEF,MSUDF,MDF,DBF}

KCF MISS CUDA E675 {DOD}{DLF,HYF,IEF}
P43936432

KCF MISS REDEEM Z270 ET {DOD}{DLF,HYF,IEF}



SEMEN: \$40/straw; \$60/certificate CONTACT: Knoll Crest Farm

CE	BW	WW	YW	DMI	SC	SCF	MM	M&G	MCE	MCW	UDDR	TEAT	CW	FAT	REA	MARB	BMI\$	BIIS	CHBS
8.8	0.5	83	133	0.8	1.9	22.6	36	77	6.3	113	1.30	1.30	82	0.062	0.52	0.60	480	616	171
12%	12%	1%	1%	98%	2%	10%	9%	1%	8%	91%	27%	32%	19%	91%	38%	2%	6%	3%	3%

- Homozygous Polled!
- Short marked and fully pigmented
- Eagle was the \$35,000 high selling bull of the December 2021 KCF Bull Sale.
- Eagle posted a 98 BWR, 128 WWR, 116 YWR, 110 IMF and 120 RE in an extremely competitive contemporary group.

- His Dam of Distinction mother is a stellar producer with 5 calves @ 114 WWR, 4@109 YWR, 2@104 IMF and 2@121 RE.
- Eagle is an incredibly unique, proven sire with 162 progeny @ 99 BWR, 142@103 WWR, 42@102 YWR, 25@111 IMF. He consistently delivers calving ease, explosive growth, big testicles, short markings and excellent structure. His first daughters in production are outstanding with beautiful udders.



Paul S. Bennett 434-941-8245
Dalton G. Bennett 434-664-7946

Jim G. Bennett 434-664-7935
Brian R. Bennett 434-664-8309
Scott R. Bennett 434-660-7268

P.O. Box 117 | Red House, VA 23963 | Martha Johnson, Office Manager | 434-376-3567
knollcrest@knollcrestfarm.com | www.knollcrestfarm.com



AW STATESMAN 038H {CHB}{DLF,HYF,IEF,MSUDF,MDF}

P44177977

Calved: 2/24/20 - Tattoo: BE 038H

EFBEEF TFL U208 TESTED X651 ET {SOD}{CHB}{DLF,HYF,IEF,MSUDF}

F FINAL TEST 722 {CHB}{DLF,HYF,IEF,MSUDF,MDF,DBF}

P43782451

F MS YORK 567 {DOD}{DLF,HYF,IEF,MSUDF}

MOHICAN THM EXCEDE Z426 {SOD}{DLF,HYF,IEF,MSUDF,MDF,DBF}

AW LADY EXCEDE 82F {DLF,HYF,IEF,MSUDF}

P43944592

AW LADY SENSATION 613D {HYP}

CE	BW	WW	YW	DMI	SC	SCF	MM	M&G	MCE
16.7	-4.2	52	80	-0.2	0.8	30.8	29	55	5.2
MCW	UDDR	TEAT	CW	FAT	REA	MARB	BMI\$	BIIS	CHBS
69	1.40	1.40	55	0.042	0.20	0.55	576	684	146



SEMEN: \$30/Straw, \$75/Certificate

Volume discount: 20 straws for \$500

Contact owners or Reed Enterprises, 660-527-3507

- HOMOZYGOUS POLLED
- DB Free
- Quite possibly the best son of Final Test
- Heifer approved.
- A high fertility sire with a great disposition
- Top 2% for CE, BW, SCF, MARB
- Top 1% for BMI\$, BIIS
- Average progeny ratios for BW 93.8, WW 98.2, YW 101.7, REA 101.2, IMF 104.2
- Daughters maintain 105 WW ratio



STATESMAN CALF



JOURNAGAN RANCH
Missouri State
AGRICULTURE

Marty Lueck, manager
Rt. 1, Box 85G
Mountain Grove, MO 65711
cell 417-838-1482 or 417-948-2669
mvlueck@centurytel.net

ASHLEWOOD
FARM

SELMER, TENNESSEE

Billy Ashe 731-610-4445
Wes Ashe 731-439-3038



C&L RR KJ 364C JALAPENO 973E {DLF,HYF,IEF,MSUDF}

P43844129

Calved: 4/12/17 - Tattoo: BE 973E

CE	BW	WW	YW	DMI	SC	SCF	MM	M&G	MCE
7.5	1.9	76	107	0.6	1.6	12.4	34	72	-0.7
MCW	UDDR	TEAT	CW	FAT	REA	MARB	BMS	BIIS	CHBS
90	1.30	1.30	75	0.032	0.41	0.11	294	383	112

HYALITE ON TARGET 936 {SOD}{DLF,HYF,IEF,MSUDC}

R LEADER 6964 {SOD}{DLF,HYF,IEF,MSUDF,DBF}

P43500058

R MISS REVOLUTION 1009 {DOD}{DLF,HYF,IEF,DBP}

CRR 719 CATAPULT 109 {SOD}{DLF,HYF,IEF,MDF}

KJ BJ DWE 686Z SALSA 364C ET {DLF,HYF,IEF,MSUDF,MDF,DBF}

P43585785

KJ 968R ZSA ZSA 686Z ET {DLF,HYF,IEF,MDF,DBF}



SEMEN: \$25/Straw; \$75/Certificate

Volume discount: 25 straws for \$500

Contact: Reed Enterprises 660-527-3507

- HOMOZYGOUS POLLED
- Heifer approved
- Jalapeno is an exceptional son of Leader, out of Salsa. He excels in phenotype, structure and has an incredible foot
- Trait leader (top 10%) for WW, SC, MM, M&G
- Progeny have tremendous eye appeal and style
- Daughters in production have high quality udder shape and ideal teat structure
- Daughters maintain a 103.5 weaning ratio



Maternal brother to KJ MHPH RW 364C Media 240J ET, a million dollar bull.



KJ BJ DWE 686Z SALSA 364C ET
One of the premier cows in the breed. Jalapeno was her first calf and a natural calf.

REED FARMS
Registered Polled Herefords



Jim and Linda Reed
Craig, Natalie, Macy, Mallory and Maggie Reed
Brian, Samara and Terrell Reed
P.O. Box 126 • Green Ridge, MO 65332
660-527-3507 • Fax 660-527-3379
reedent@iland.net / www.reedent.com

LJR JOURNAGAN RANCH
Missouri State AGRICULTURE

Marty Lueck, manager
Rt. 1, Box 85G
Mountain Grove, MO 65711
cell 417-838-1482 or 417-948-2669
mvlueck@centurytel.net

Reynolds Herefords

Matt, Barb, Tye and Makayla Reynolds
1071 County Rd. 1231
Huntsville, MO 65259
Matt 660-676-3788 • Barb 660-676-4788
reynoldscattle@cvalley.net
www.reynoldsherefords.com

EF MF LONGEST YARD 19Z 228J ET

{DLF,HYF,IEF,MSUDF,MDF,DBF}



P44225190

Calved: 2/28/2021 - Tattoo: BE 228J

CE	BW	WW	YW	DMI
3.5	1.0	69	107	0.3
SC	SCF	MM	M&G	MCE
0.7	28.8	44	79	0.8
MCW	UDDR	TEAT	CW	FAT
79	1.40	1.50	66	-0.018
REA	MARB	BMI\$	BIIS	CHBS
0.35	0.18	540	638	122



SEMEN: U.S. | Conventional:
\$50/Straw; \$100/Straw Sexed (10 straw minimum)
SEMEN: International | Conventional
\$100/Straw; \$200/Straw Sexed (10 straw minimum)
 Contact: Bruce Everhart 317-407-3618

- CHURCHILL SENSATION 028X {SOD}{DLF,HYF,IEF,MDF,DBF}
- NJW LONG HAUL 36E ET** {DLF,HYF,IEF,MSUDF,MDF,DBF}
- P43829326 NJW 79Z 10W RITA 11B {DLF,HYF,IEF,MSUDF,MDF}
- BAR JZ RUMBLE 525X {DLF,HYF,IEF,DBP}
- AH MS 25L RUMBLER 19Z** {DOD}{DLF,HYF,IEF,MSUDF,DBF}
- P43292936 AH JDH MS 25L WRANGLER 34X ET {DOD}{DLF,HYF,IEF}

- Sire of 2025 Cattlemen's Congress Reserve National Champion Polled Hereford Bull
- Sire of 2025 Cattlemen's Congress National Champion Pen of Three Bulls
- All dark red and all stout breeding potential bulls!

B&C END ZONE 3535L ET {DLF,IEF,HYF,MSUDF}

2025 CHAMPION PEN OF BULLS



P44561533

- 2025 Cattlemen's Congress Reserve National Champion Polled Hereford Bull
- Sired by EF MF Longest Yard 19Z 228J ET



- 2025 Cattlemen's Congress Champion Pen of Bulls
- Sired by EF MF Longest Yard 19Z 228J ET



All semen inquiries, contact:
EverhartHerefords.com
 Bruce and Shoshanna 317-407-3618
 Blake and Ashley 317-409-1923
 Brian and Jordan 317-512-0375





BIRDWELL WALL STREET 0588ET {CHB}{DLF,HYF,IEF,MSUDF,MDF}

P44255506

Calved: 12/3/20 — Tattoo: BE 0588

CE	BW	WW	YW	DMI	SC	SCF	MM	M&G	MCE
0.4	3.4	68	105	0.3	1.5	23.9	32	66	12.2
MCW	UDDR	TEAT	CW	FAT	REA	MARB	BMI\$	BIIS	CHBS
95	1.40	1.40	90	0.072	0.62	0.61	516	638	187

SHF YORK 19H Y02 {SOD}{CHB}{DLF,HYF,IEF}
CHURCHILL BROADWAY 858F {CHB}{DLF,HYF,IEF,MSUDF,MDF,DBF}
 P43919937 CHURCHILL LADY 640D {DLF,HYF,IEF}



EFBEEF BR VALIDATED B413 {SOD}{CHB}{DLF,HYF,IEF,MSUDF,MDF,DBF}

BR VALIDATED B413 6035 7098 {DLF,HYF,IEF,MDF,DBF}
 P43857421 BR BENNETT 4R Y428 2101 6035 {HYF,DBP}

Semen: **\$35/Straw**, **\$75/Certificate**, 10 straw minimum
 For semen or certificates please contact Springhill Herefords

- Homozygous Polled
- Fully pigmented
- Son of the "super cow" 7098
- Currently enrolled in the NRSP at Olsen's with data being released this spring
- Wallstreet brings together two Marbling and Maternal standouts with (Broadway x 7098) to offer the top 1% in Marbling while leading in the top 2% or higher in each of the economic indexes in a moderate package.



BR VALIDATED B413 6035 7098
 Dam of Birdwell Wall Street 0588ET



SH/DD WALL STREET L767
 Heartland Farms - Marysville, KS



Blue Rapids, KS
 Dave 785-556-0124
 Dan 785-562-6685
 Kim 785-562-6680
 info@springhillherefords.com



Fletcher, OK
 Jim cell 580-695-2352
 Joel cell 405-368-1058

Caldwell, ID
 Greg 208-459-3029
 Sam 208-880-9044
 Tucker 208-899-0455

CHURCHILL

3316L ET

AHA 44504283

EQUITY

HOMOZYGOUS POLLED |
DEEP, STOUT RUGGED
CALVING EASE SIRE THAT
PRESENTS A UNIQUE
OPPORTUNITY FOR
BREEDERS | FRECKLE FACED
EQUITY IS THE ONLY BULL
IN THE HEREFORD
DATABASE FOR
COMBINATION OF CED, BW,
WW, YW \$CHB



CHURCHILL LADY 023H ET
DAM OF EQUITY



\$50/UNIT · \$75/CERT · 10 UNIT MINIMUM

JW X651 TESTED 1857 ET

NJW 76S 27A LONG RANGE 203D ET

JW 1857 MERIT 21134



CHURCHILL LADY 023H ET

JW 33Z VICTORIA 19027

JDH AH MERCEDES 11E ET

CE	BW	WW	YW	DMI	SC	SCF	MM	MG	MCE	MCW	UDDR	TEAT	CW	FAT	REA	MARB	BMI	BII	CHB
11.6	0.7	74	118	0.4	1.7	19.2	30	67	5.5	110	1.30	1.30	108	0.082	0.77	0.42	457	569	195
5%	14%	3%	4%	63%	4%	32%	32%	10%	12%	87%	28%	32%	1%	98%	8%	6%	11%	7%	1%



SHOCKLEY RANCH
MONTE SHOCKLEY
918.413.1890
POTEAU, OKLAHOMA



SEMEN SALES MANAGED BY
BIGELOW LIVESTOCK MANAGEMENT
MATT BIGELOW 651.587.3543



DRY CREEK FARMS
LOCKE ST. JOHN
& CARTER ST. JOHN
615.427.8979 · 205.705.4041
PELL CITY, ALABAMA

STELLPFLUG Gunsmoke

222 ET

(DLF) (IEF) (HYF) (MSUDF) (MDF) (DBF)



DAM OF GUNSMOKE



NATIONAL CHAMPION POLLED BULL // 2025 NWSS



DIVISION CHAMPION POLLED BULL // 2025 CATTLEMEN'S CONGRESS



NATIONAL CHAMPION POLLED BULL // 2023 & 2024 RENO WESTERN STATES

JDH 11B STUD 3134 63E

INNISFAIL WHR X651/723 4013 ET

SIRE: **JDH AH BENTON 8G ET** // DAM: **NJW 202C 4013 HOMEMAKER 90H ET**

JDH AH MS 34X VICTOR 33Z45C ET

NJW 160Z 8Y HOME MAKER 202C

AHA # **P44400396** // DOB: **2/11/22** // **POLLED**



CE	BW	WW	YW	DMI	SC	SCF	MM	MG	MCE
-0.6	3.4	74	123	0.3	1.3	18.6	28	65	0.5
83%	67%	3%	2%	49%	23%	38%	46%	15%	66%
MCW	UDDR	TEAT	CW	FAT	REA	MARB	BMI	BII	CHB
147	1.50	1.50	110	0.072	0.99	0.42	463	574	202
100%	2%	4%	1%	96%	1%	6%	9%	6%	1%

- Top 6% or better in the breed for 9 traits including: WW, YW, UDDR, TEAT, CW, REA, Marbling, BII\$, and CHB\$
- Gunsmoke is unmatched in his ability to combine phenomenal phenotype and incredible genotype. His dam, 90H, is the maternal powerhouse from the NJW program that demanded \$60,000 as a yearling heifer.
- His sire, Benton, is the carcass sire adding extra look, length, and pounds.
- It isn't often you can find a bull of this quality that brings BOTH carcass merit and maternal strength to the table.
- If you're looking to put BALANCE in your herd, look no further!
- The calf reports have been impressive!

**\$100/UNIT, 10 UNIT MINIMUM
\$100/CERTIFICATE**

VOLUME DISCOUNTS OF 50 UNITS OR MORE AVAILABLE.
PLEASE CALL FOR DETAILS.



PO BOX 239 - OROVADA, NEVADA

DON, SKEETER, KARI, BROOKE AND BRYCE

DON 209-479-0287 • KARI 209-479-2642 • EMAIL OROVADAHERFORDS@AOL.COM

WWW.BRUMLEYFARMS.COM

(DLF) (IEF) (HYF) (MSUDF) (MDF) (DBF)

JW 1857

MERIT

21134

POLIED • AHA# 44212986 • DOB 10/14/2020

EFBEEF TFL U208 TESTED X651 ET JDH VICTOR 719T 33Z ET
JW X651 TESTED 1857 ET X JW 33Z VICTORIA 19027
 KCF MISS 22S A261 JW 028X DOMINETTE 1417



CONTACT US FOR SEMEN
\$50/STRAW
 CERTIFICATES \$100

	CED	BW	WW	YW	DMI	SC	SCF	MM	M&G	MCE	MCW	UDDR	TEAT	CW	FAT	REA	MARB	BMI\$	BI\$	CH\$
EPD	8.3	1.4	91	141	0.7	1.7	21.5	34	80	5.2	121	1.50	1.50	117	-0.008	0.90	0.71	527	674	243
ACC	0.43	0.84	0.69	0.67	0.27	0.44	0.32	0.26	-	0.37	0.37	0.51	0.50	0.31	0.36	0.29	0.34	-	-	-
%	14%	23%	1%	1%	92%	4%	15%	12%	1%	13%	96%	2%	4%	1%	7%	3%	1%	2%	1%	1%



The \$50,000 high-selling Merit son from the 2024 High Cotton Bull Sale



Merit son: Churchill Equity 3316L

◆ **HOMOZYGOUS POLLED**

- ◆ **TOP 1% FOR WW, YW, SC, MG, CW, REA, MARB, BMI, BI, CHB**
- ◆ **MERIT'S CALVES ARE THE RIGHT SIZE. THEY COME SMALL AT BIRTH AND HAVE A TON OF GROWTH AND EYE APPEAL**
- ◆ **MERIT IS TRULY UNMATCHED IN HIS COMBINATION AND SPREAD FROM CED TO YW, WHILE NOT SACRIFICING MATERNAL TRAITS.**
- ◆ **MERIT IS SUPER SOUND AND GREAT FOOTED.**
- ◆ **MERIT-SIRED CALVES ARE TOPPING SALES ALL OVER THE COUNTRY**



Owning and operating a bull stud can show you pretty quickly just how important fertility is, and how much emphasis we should be putting on fertility. Merit is one bull that collects outstandingly well and is super fertile time and time again.”

- JOHN & RANDA STARNES



RANDY & KELLY OWEN, OWNERS
 533 RANDY OWEN DR. NE
 FORT PAYNE, ALABAMA

JOHN, RANDA, HARPER & JOHN OWEN STARNES
 JOHN 256-996-5559
 RANDA 256-996-5545

ROLAND & JANET STARNES
 706-601-0800

JOE WAGGONER
 2096 PILGRIM REST RD
 CARTHAGE, MISSISSIPPI
 JOE 601-572-4111



A H A 4 4 4 9 1 8 5 1

ASM 405B

RED MAN

325L

(DLF) (IEF) (HYF) (MSUDF) (MDF) (DBF)



SEMEN PACKAGES \$1,000 FOR 10 STRAWS (NON-CERTIFICATE) CONTACT AUSTIN



GRAND CHAMPION POLLED HEREFORD BULL
2025 CATTLEMEN'S CONGRESS

KCF BENNETT ENCORE Z311 ET
 NJW 79Z Z311 ENDURE 173D ET
 BW 91H 100W RITA 79Z ET
X NJW 73S W18 HOMETOWN 10Y ET
 ASM 705 10Y MISS MALLORY 405B
 ASM 122L MISS 705ET

CE	BW	WW	YW	DMI	SC	SCF	MM	MG	MCE	MCW	UDDR	TEAT	CW	FAT	REA	MARB	BMI	BII	CHB
13.1	0.7	63	104	0.4	0.9	25.4	35	67	5.5	85	1.30	1.40	112	0.032	1.05	0.40	555	657	204
3%	14%	24%	18%			3%	10%	10%	11%		28%	13%	1%		1%	6%	1%	1%	1%



MATHENY HEREFORDS

ANDREW & SUZANNE, AUSTIN & RYLEE, TAYLOR BELLE MATHENY

ANDREW 606.584.5361

AUSTIN 606.375.2167

MAYS LICK, KY



Tennessee River Music

JOHN, RANDA, HARPER & JOHN OWEN STARNES

JOHN 256.996.5559

RANDA 256.996.5545

FORT PAYNE, AL

CE	7.0	BMI\$	
BW	0.4	487	
WW	54	BI\$	
YW	82	564	
DMI	0.2	CH\$	
SC	1.1	123	
SCF	25.1	AHA	GE-EPD
MM	31		
M&G	57	MA	8
MCE	4.6		
MCW	57		
UDDR	1.60		
TEAT	1.60	PREMIUM	REDBALDY
CW	71		
FAT	0.022		
REA	0.73	SCHB	
MARB	0.15		



NJW 281F 168C TUFF 10H {DLF,HYF,IEF,MSUDF,MDF,DBF}

P44169622 Calved: 1/27/20 - Tattoo: LE 10H/RE 281F

KT BUILT TUFF 1010 (SOD){DLF,HYF,IEF,MSUDF,MDF,DBF}
 NJW 12A 1010 TUFF 168C (DLF,HYF,IEF,MSUDF,MDC,DBF)
 P43589120 NJW 25W 8Y SPIRITQUEEN 12A (DLF,HYF,IEF,MSUDF,MDC)

CHURCHILL SENSATION 028X (SOD){DLF,HYF,IEF,MDF,DBF}
 NJW 160B 028X DAYDREAM 281F ET (DLF,HYF,IEF,MDF,DBF)
 P43943297 NJW 73S 38W DAYDREAM 160B (DLF,HYF,IEF,MSUDF)

- Our choice for a go-to, balanced trait heifer bull.
- Calves come easy, are vigorous, quick to fill out and mature with extra look, style and fleshing ability, Sires equally good heifers and bulls.
- A Hereford 8 trait leader that offers extra calving ease, maternal value and udder quality.
- Dam is a big bodied, powerful brood cow who is a full sister to Historic 81E!
- 2-year-old daughters were exceptional – raising top end bulls their first year.
- Act. BW 74 lb. Used heavily at NJW on heifers and cows. Avg. BW on 3 NJW crops 82 lb.



Dam — **281F**

Semen: \$25/Straw; \$75/Certificate



2-Year-Old Daughter — **109K**



2-Year-Old Daughter — **74K**



Son — **18M**






Ned and Jan Ward
 Ned cell 307-751-8298
 Jan cell 307-751-9470
 Bell Ward cell 307-751-6922
 Mailing address: PO Box B • Sheridan, WY 82801
 njwardherefords@gmail.com
 www.NJWHerefords.com

NORTH RANCH:
 2637 Adsit Rd., Decker, MT 59025
 SOUTH RANCH:
 888 Lower Prairie Dog Rd.,
 Sheridan, WY 82801

SPRING SALE
Wed., MARCH 26, 2025

Sale Location ... NJW SOUTH RANCH • Sheridan, WY
 Selling 100 Balanced Trait, Big Bodied, Easy
 Fleshing, Maternally-Powered Yearling Bulls
 • 10 18-month-old Bulls • 45 Registered Yearling
 Heifers • 8 Fall Bred Heifers
 • Pick of 2025 Heifer Calves

CE	5.6	BMI\$
BW	0.9	560
WW	65	BI\$
YW	90	689
DMI	0.3	CH\$
SC	1.6	232
SCF	24.1	
MM	31	
M&G	64	
MCE	2.1	
MCW	72	
UDDR	1.50	
TEAT	1.60	
CW	105	
FAT	0.042	
REA	1.37	
MARB	0.84	



BIRDWELL NEW STANDARD 2912 ET {DLF,HYF,IEF,MSUDF,MDF,DBF}

P44358760 Calved: 3/11/22 - Tattoo: BE 2912

KCF BENNETT TRUST B279 ET (CHB);{DLF,HYF,IEF,MDF,DBC}
KCF BENNETT RESOLVE G595 (CHB);{DLF,HYF,IEF,MSUDF,MDF,DBC}
P44105347 KCF MISS TESTED C422 (DLF,HYF,IEF,MSUDF)

EFBEEF BR VALIDATED B413 (SOD);{CHB};{DLF,HYF,IEF,MSUDF,MDF,DBF}
BR VALIDATED B413 6035 7098 (DLF,HYF,IEF,MDF,DBF)
P43857421 BR BENNETT 4R Y428 2101 6035 (HYP,DBP)



BR Validated B413 6085 7098
Dam of New Standard and one of the most highly regarded cows in the breed.

- HOMOZYGOUS POLLED! A HEREFORD 12 TRAIT LEADER**
- A unique breeding tool that combines and is backed by the highest values for carcass traits, fertility and udder quality.
 - Very sound in his structure and make-up.
 - An incredible first calf crop here at NJW with heifers and bulls being of equal high quality! Sons are real beef bulls — stout, thick and efficient. Daughters have the look and makings of beautiful big bodied brood cows.
 - Act. BW on 2912 — 77 lb. Avg. BW on first crop of calves at NJW 79 lb. (includes ET and natural out of heifers and cows).
 - Entered in NRSP Program at Olsen Ranches.

Semen: 20 Straws for \$3,500; **\$100/Certificate**
Contact NJW



Son — **NJW 147M**



Son — **NJW 127M**



Son — **NJW 30M**



NJW POLLED HEREFORDS
Jf Ned and Jan Ward
Ned cell 307-751-8298
Jan cell 307-751-9470
Bell Ward cell 307-751-6922
Mailing address: PO Box B • Sheridan, WY 82801
njwardherefords@gmail.com
www.NJWHerefords.com

NORTH RANCH:
2637 Adsit Rd., Decker, MT 59025
SOUTH RANCH:
888 Lower Prairie Dog Rd.,
Sheridan, WY 82801



BIRDWELL RANCH
Fletcher, OK
Jim Birdwell 580-695-2352
Joel Birdwell 405-368-1058

CE	4.1	MCW	116
BW	2.7	UDDR	1.60
WW	64	TEAT	1.60
YW	107	CW	90
DMI	0.4	FAT	0.062
SC	1.0	REA	0.67
SCF	28.3	MARB	0.38
MM	33	BMI\$	570
M&G	65	BII\$	675
MCE	0.7	CHB\$	169



**Semen: \$25/Straw/
\$75/Certificate**
Contact Rausch or NJW

- This 2024 NJW Sale Feature puts it all together with both "Look and Documents"!
- Extra substance, shape, style, length, hip and top
- His dam, 79Z, is known for her "Herd Bull" making and his sire, 029H, comes in as a HEREFORD 11 TRAIT LEADER!
- Used heavily by NJW and Rausch
- Act. BW 92 lb., Adj. WW 836 lb., Adj. YW 1,312 lb., Adj. REA 14.54, Adj. MARB 3.26
- Enrolled in NRSP Program at Olson Ranches



79Z
Dam



JF
Ned and Jan Ward
Ned cell 307-751-8298
Jan cell 307-751-9470
Bell Ward cell 307-751-6922

Mailing address:
PO Box B • Sheridan, WY 82801
njwardherefords@gmail.com
www.NJWHerefords.com



Jacob Rausch 605-769-0552
Hoven, SD
jacob@rauschherefords.com
www.rauschherefords.com

NJW 79Z 029H VISTA 147L ET

{DLF,HYF,IEF,MSUDF,MDF,DBF}



P44486345 Calved: 2/20/23 - Tattoo: LE 147L/RE 79Z

CHURCHILL BROADWAY 858F {CHB}{DLF,HYF,IEF,MSUDF,MDF,DBF}
CHURCHILL DESPERADO 029H {CHB}{DLF,HYF,IEF,MSUDF,MDF,DBF}
P44149846 CHURCHILL LADY 8251F ET {DLF,HYF,IEF,MSUDF}

NJW 73S M326 TRUST 100W ET {SOD}{CHB}{DLF,HYF,IEF,MSUDF,MDF,DBF}
BW 91H 100W RITA 79Z ET {DLF,HYF,IEF,MSUDF,MDF}
P43311375 REMITALL RITA 91H {DLF,HYF,IEF}

CE	3.2	MCW	92
BW	2.5	UDDR	1.30
WW	72	TEAT	1.40
YW	114	CW	73
DMI	0.6	FAT	0.022
SC	1.5	REA	0.43
SCF	23.9	MARB	0.06
MM	31	BMI\$	457
M&G	66	BII\$	547
MCE	-3.0	CHB\$	111



**Semen:
\$25/Straw;
\$75/Certificate**

HOMOZYGOUS POLLED!

- An all-around easy doing, big volume Herd bull — backed by timeless, proven heritage. He's a "Cowman's Bull" ... soggy and soft with a big hip and stifle plus is super footed and sound. His grandam, 80L, was born 23 years ago but would still be a top cow in our program today. We are using him heavily and extremely pleased with our set of yearlings by him!
- Act. BW 98 lb., Adj. WW 733 lb., Adj. YW 1,289 lb., Adj. REA 15.82, ratio 114; Adj. MARB 4.24, ratio 122
- Foreign semen available



Daughter — **152M**

NJW 247C 41E SOUL 173K

{DLF,HYF,IEF,MSUDF,MDF,DBF}



P44376864 Calved: 2/20/22 - Tattoo: LE 173K/RE 247C

CHURCHILL SENSATION 028X {SOD}{DLF,HYF,IEF,MDF,DBF}
NJW 11B 028X HOSS 41E ET {DLF,HYF,IEF,MSUDF,MDF,DBF}
P43829325 NJW 79Z 10W RITA 11B {DLF,HYF,IEF,MSUDF,MDF}

THM DURANGO 4037 {SOD}{DLF,HYF,IEF}
NJW 80L 4037 PRAIRIE 247C ET {DLF,HYF,IEF,MSUDF,MDF}
P43669636 NJW 12E PRAIRIE 80L {DLF,HYF,IEF}



JF
Ned and Jan Ward
Ned cell 307-751-8298
Jan cell 307-751-9470
Bell Ward cell 307-751-6922

Mailing address:
PO Box B • Sheridan, WY 82801
njwardherefords@gmail.com
www.NJWHerefords.com

CE	11.9	BMI\$
BW	0.8	544
WW	65	BIIS
YW	104	645
DMI	0.4	CHBS
SC	1.8	116
SCF	29.6	AHA GE-EPD
MM	34	
M&G	67	MA NATIONAL ASSOCIATION
MCE	5.4	
MCW	105	
UDDR	1.40	PREMIUM REDBALDY
TEAT	1.40	
CW	64	
FAT	0.082	
REA	0.33	
MARB	0.25	SCHB



NJW 133A 6589 MANIFEST 87G ET {DLF,HYF,IEF,MSUDF,MDF,DBF}

P44057384 Calved: 2/10/19 - Tattoo: LE 87G/RE 133A

R LEADER 6964 {SOD}{DLF,HYF,IEF,MSUDF,DBF}
 /S MANDATE 66589 ET {DLF,HYF,IEF,MSUDF,MDF,DBF}
 P43834732 /S LADY DOMINO 0158X {DLF,HYF,IEF}

NJW 73S W18 HOMETOWN 10Y ET {SOD}{CHB}{DLF,HYF,IEF,MSUDF,MDC}
 BW NJW 76S BY HOMESPUN 133A {DLF,HYF,IEF,MSUDF,MDC}
 P43385252 NJW 55N STARDUST 76S {DLF,HYF,IEF,MSUDF,MDF}



- A HEREFORD 12 TRAIT LEADER!
- Act BW 88 lb., Adj. WW 721 lb., Adj. YW 1,250 lb., Act. SC @ 1 year 41 cm
- Elite Breeding Herd Builder with the phenotype, numbers and data we are demanding! He is extra-long, wide, big topped, square and deep hipped, super sound moving and balanced end to end.
- Sons share his Signature Look and are sale features! One son is in Select Sires herd sire lineup! Another was 2022 South Eastern Show Bull of the Year! Others were members of the 2024 Denver Reserve Champion Pen of Three!
- Daughters in production look as we had hoped and work as we expected!
- Use on heifers or cows. Average birthweight on all NJW crops, 76 lb.

Semen: \$25/Straw; \$75/Certificate. Foreign semen available.



Son - **216J**



Son - **55J**



Daughter - **187J**



2-Year-Old Daughter - **98K**



JF Ned and Jan Ward
 Ned cell 307-751-8298
 Jan cell 307-751-9470
 Bell Ward cell 307-751-6922
 Mailing address: PO Box B • Sheridan, WY 82801
 njwardherefords@gmail.com
 www.NJWHerefords.com

NORTH RANCH:
 2637 Adsit Rd., Decker, MT 59025
SOUTH RANCH:
 888 Lower Prairie Dog Rd.,
 Sheridan, WY 82801



Ryan Chapman 615-335-3187
 John Thomas Woolfolk 731-345-1585
 2090 Old Airport Rd.
 Nunnely, TN 37137
 www.chapmanlandandcattle.com

7HP125 CMF 1720 GOLD RUSH 569G ET

AHA 44108010 / Endure x Resolute / Homo. Polled / \$30



- GOLD RUSH is our high-selling Hereford bull. He's earned this position with a long list of useful traits.
- He dominated the most recent Hereford National Reference Sire Program at Olson Ranch.
- Few sires of any breed improve EPDs as they add progeny data, GOLD RUSH is one of them. In the past year he has improved for CED, BW, YW, SCF, CW, REA, Marb, BMI, BII and CHB.
- He is dark red, goggle-eyed, moderately sized, big footed and super sound. What's not to like?

From Candy Meadow Farm, TN

	CED	BW	WW	YW	DMI	SC	SCF	MM	M&G	MCE	MCW	UDDR	TEAT	CW	FAT	REA	MARB	BMI\$	BII\$	CHB\$
EPD	11.8	1.1	69	107	0.5	1.1	28.3	31	65	4.5	92	1.30	1.30	103	.052	.88	.75	603	738	220
ACC	.55	.89	.82	.80	.43	.68	.43	.38	-	.46	.45	.62	.63	.53	.53	.52	.53	-	-	-
%RANK	4	19	8	14	76	42	1	26	15	18	54	28	32	1	84	3	1	1	1	1

7HP134 111F NEXT LEVEL ET

AHA 44439544 / Governor x CUDA / Homo. Polled / \$40



- NEXT LEVEL offers major growth performance and carcass merit. This youngster can take your calf crop to the next level.
- Many carcass enthusiasts have found this bull and his projections for CW, REA and Marbling are high!
- His pedigree makes him an outcross, allowing for plenty of mating flexibility.
- NEXT LEVEL offers 10 traits and indices ranking in the top 10% of the breed.

From 111 Farms, GA

	CED	BW	WW	YW	DMI	SC	SCF	MM	M&G	MCE	MCW	UDDR	TEAT	CW	FAT	REA	MARB	BMI\$	BII\$	CHB\$
EPD	4.9	2.1	79	134	0.7	1.5	18.2	33	73	3.9	93	1.30	1.30	113	.062	.88	.73	465	601	234
ACC	.31	.45	.42	.41	.14	.35	.29	.23	-	.31	.32	.39	.39	.10	.10	.10	.10	-	-	-
%RANK	37	37	1	1	92	10	42	16	3	24	56	28	32	1	91	3	1	9	4	1

YOUR ROAD MAP TO **SUCCESS** STARTS WITH
SELECT SIRES

7HP132 RST 5051 SMALL TOWN KID 9023

AHA 44039432 / SMALL TOWN KID x Revolution / Homo. Polled / \$30



- KID 9023 is a trait-leader for a total of 15 traits. You've got to be kidding me!
- Freckle-faced, good footed, stout and strong, Kid 9023 follows in the footsteps of his popular sire, SMALL TOWN KID, that has many fans!
- Offering across the board improvement, you'll like what KID 9023 can do in your next calf crop.
- He will add pounds of performance, carcass premiums and improve udders without sacrificing Calving Ease.

From Thomas Herefords, MT

	CED	BW	WW	YW	DMI	SC	SCF	MM	M&G	MCE	MCW	UDDR	TEAT	CW	FAT	REA	MARB	BMI\$	BI\$	CHB\$
EPD	12.1	-0.3	76	110	1.0	2.1	21.8	28	66	1.0	103	1.70	1.80	102	.042	.90	.43	476	591	174
ACC	.47	.78	.68	.69	.19	.59	.36	.39	-	.41	.36	.57	.59	.10	.10	.10	.10	-	-	-
%RANK	4	7	2	10	99	1	14	46	12	59	77	1	1	1	74	3	5	7	4	3

7HP130 NJW 119E 87G ENDORSEMENT 216J

AHA 44272851 / Manifest x Circleboss / Homo. Polled / \$25



- Check out this heifer bull extraordinaire, with a pedigree to please!
- Siring vigorous calves that get going quickly at birth, ENDORSEMENT has made fast friends in commercial country!
- Big, strong, dark red, pigmented and athletic, ENDORSEMENT offers all the desirable attributes for replacement females.
- Our customers have had great success with our previous NJW bulls, ENDORSEMENT will be no different.

From NJW Herefords, WY

	CED	BW	WW	YW	DMI	SC	SCF	MM	M&G	MCE	MCW	UDDR	TEAT	CW	FAT	REA	MARB	BMI\$	BI\$	CHB\$
EPD	15.5	-1.7	67	103	0.8	1.5	23.1	30	63	4.8	79	1.50	1.40	72	.022	.50	.16	444	535	115
ACC	.49	.79	.65	.60	.19	.47	.33	.26	-	.38	.38	.52	.51	.24	.30	.24	.26	-	-	-
%RANK	1	3	12	20	96	10	8	32	21	16	26	2	13	49	43	42	41	14	14	61



YOUR SUCCESS *Our Passion.*

Phone: (614) 873-4638 ♦ www.selectsiresbeef.com

©Your Success Our Passion. and the Select Sires logo are registered trademarks of Select Sires Inc., Plain City, Ohio.

EPDs as of 1/27/25.

MPH 2I03 EASTWOOD G3 ET {DLF,HYF,IEF,MSUDF,MDF,DBP}



P44053546

Calved: 1/10/19 - Tattoo: LE G3

CE	BW	WW	YW	DMI
-2.7	3.9	52	90	-0.1
SC	SCF	MM	M&G	MCE
0.9	12.4	32	58	0.2
MCW	UDDR	TEAT	CW	FAT
72	1.30	1.30	70	-0.018
REA	MARB	BMIS	BIIS	CHBS
0.62	0.16	312	379	135

SEMEN: \$20/Straw; \$75/Certificate
Sexed Heifer Semen: **\$50/Straw**

NJW 98S R117 RIBEYE 88X ET {SOD}{DLF,HYF,IEF,MSUDF,MDF,DBF}
C MILES MCKEE 2I03 ET {SOD}{DLF,HYF,IEF,MSUDF,MDF}
43270668 C NOTICE ME ET {DLF,HYF,IEF}

REMITALL ONLINE 122L {SOD}{CHB}{DLF,HYF,IEF,DBC}
STAR KKH SSF OLIVIA ISU ET {DLF,HYF,IEF,DBP}
P42872212 SSF KEYSHA 949 {DLF,HYF,IEF}



STAR KKH SSF OLIVIA ISU ET
Dam of Eastwood

BK MPH OLIVIA 644D ET
Full sister to Eastwood

- Smooth polled.
- Eastwood is the son of the record selling and Denver champion bull, Miles McKee and the record selling and Denver champion female, Olivia.
- He is the unique combination of timeless genetics and outstanding phenotype.
- He is the complete herd sire that checks all the boxes.
- 2021 South Dakota State Fair Supreme Champion Bull
- 2021 American Royal Reserve Champion Senior Bull

MPH Z3II RAMPAGE DI {CHB}{DLF,HYF,IEF,MSUDF,MDF,DBP}



P43696424

Calved: 1/7/16 - Tattoo: LE D1



CE	BW	WW	YW	DMI
6.2	-0.2	60	95	0.2
SC	SCF	MM	M&G	MCE
1.3	13.2	37	67	8.4
MCW	UDDR	TEAT	CW	FAT
89	1.20	1.40	83	0.042
REA	MARB	BMIS	BIIS	CHBS
0.54	0.41	342	436	163

SEMEN: \$20/Straw; \$75/Certificate
Sexed Heifer Semen: **\$50/Straw**

SCHU-LAR ON TARGET 22S {SOD}{CHB}{DLF,HYF,IEF,MSUDF,MDF,DBF}
KCF BENNETT ENCORE Z3II ET {SOD}{CHB}{DLF,HYF,IEF,MSUDF,MDF,DBF}
P43387256 KCF MISS REVOLUTION X338 ET {DLF,HYF,IEF,DBP}

RST TIMES A WASTIN 0124 {SOD}{DLF,HYF,IEF}
RHF 0124 ROSIE 3023A {DOD}{DLF,HYF,IEF}
43467528 GRANDVIEW CMR MIS P606 X395 ET {DLF,HYF,IEF,MSUDF}

- Rampage combines calving ease with maternal punch.
- His mother is a highly productive Dam of Distinction that does not miss.
- He is conservatively marked and fully pigmented with all the bells and whistles.
- Daughters are in production, and he is truly a bull that will add milk and fix udders.
- Encore's lowest birth weight and most consistent son.



BRIAN & RON METTLER
28225 431st Ave. • Menno, SD 57045
Brian 605-951-3007 • Ron 605-387-2841
Tmettler12@gmail.com
www.mettlerpolledherefords.com

JDH MRD 54E 8G BENTON 35K ET {DLF,HYF,IEF,MSUDF,MDF,DBF}



P44341381

Calved: 1/31/22 - Tattoo: BE 35K



CE	BW	WW	YW	DMI
0.6	2.9	68	112	0.3
SC	SCF	MM	M&G	MCE
0.5	20.0	29	63	0.3
MCW	UDDR	TEAT	CW	FAT
110	1.30	1.20	90	0.092
REA	MARB	BMIS	BIIS	CHBS
0.87	0.37	452	555	168

SEMEN: \$35/Straw; \$75/Certificate

JDH 11B STUD 3134 63E {CHB}{DLF,HYF,IEF,MSUDF,MDF,DBF}
JDH AH BENTON 8G ET {CHB}{DLF,HYF,IEF,MSUDF,MDF,DBF}
 P44014184 JDH AH MS 34X VICTOR 33Z45C ET {DLF,HYF,IEF,MSUDF}

- This Benton son offers calving ease/low birthweight with above average growth.
- 35K also posts stellar carcass EPDs.
- 35K has been greatly appreciated by all who see him.

BR TRUST 0217 3373 {CHB}{DLF,HYF,IEF,MDF,DBF}
JDH MS 40B TRUST 3373 54E {DLF,HYF,IEF,MSUDF}
 P43782945 JDH RBC MS 123 REDEEM 40B ET

Delaney
HEREFORDS



P.O. Box 1487 | Townsend, MT 59644
 Mark - 406-439-4311
 iinfo@ehlkeherefords.com
www.ehlkeherefords.com

MOHICAN DOW JONES 65J {DLF,HYF,IEF,MSUDF,MDF,DBF}



P44239102

Calved: 2/20/21 - Tattoo: LE 65J/RE MW



CE	BW	WW	YW	DMI
2.4	1.0	72	114	0.5
SC	SCF	MM	M&G	MCE
1.6	14.8	33	69	5.4
MCW	UDDR	TEAT	CW	FAT
102	1.40	1.30	101	0.032
REA	MARB	BMIS	BIIS	CHBS
0.86	0.32	382	480	177

SEMEN: \$35/Straw; \$75/Certificate

Exportable semen available.

Contact Ehlke Herefords for semen purchases.

EFBEEF TFL U208 TESTED X651 ET {SOD}{CHB}{DLF,HYF,IEF,MSUDF}
INNISFAIL WHR X651/723 4013 ET {CHB}{DLF,HYF,IEF,MSUDF,MDF}
 P43541960 INNISFAIL P230 T723 {DLF,HYF,IEF,MSUDF}

- We couldn't be more pleased to be a partner on 65J.
- 65J has extreme growth and carcass numbers while also having a strong maternal background.
- 65J is made right, structurally sound, with a good foot.
- He is short marked with pigment.
- His calves here show great potential with birth weights averaging in the low 80lb range.

NJW 76S 27A SALUTE 201C {DLF,HYF,IEF,MSUDF,MDF}
MOHICAN MATTIE 403E ET {DLF,HYF,IEF,MDF}
 P43809351 GV CMR Y490 MATTIE 86P A287 {DLF,HYF,IEF}

Clifford Farms

STEVE WOLFF
POLLED HEREFORDS



P.O. Box 1487 | Townsend, MT 59644
 Mark - 406-439-4311
 iinfo@ehlkeherefords.com
www.ehlkeherefords.com

LJS Mark Domino 2213

{DLF, IEF, HYF, MSUDF, MDF, DBF}



semen available
\$30/unit
 10 unit min.
\$60/certificate

LJS MARK DOMINO 1607
Sire: LJS MARK DOMINO 1954
 LJS MS MARK DOMINO 1125
 LJS MARK DOMINO 1613
Dam: LJS MS MARK DOMINO 1944
 LJS MS MARK DOMINO 1744

POLLED · AHA: P44344467
DOB: March 22, 2022



INTRODUCING LJS Mark Domino 2213

He represents decades and generations of line bred performance tested Mark Domino horned genetics, and he is a Homozygous Polled, proven herd bull.

He is a true outcross pedigree for many Hereford herds, and he is bred for maternal, carcass, and performance excellence.

Owned by Reed Stock Farm and Lester + John Schafer

CE	BW	WW	YW	DMI	SC	SCF	MM	MG	MCE	MCW	UDDR	TEAT
4.1	3.0	59	101	0.5	1.7	9.5	39	68	7.1	67	1.60	1.40
				CW	FAT	REA	MARB	BMI	BII	CHB		
				75	0.002	0.49	0.34	268	353	146		



JEFFREY & BONNIE REED
 10788 240TH STREET EAST
 HAMPTON, MN 55031

TO ORDER SEMEN, CONTACT JEFF:
 PH: 612-819-1368
 E: jbreedstockfarm@gmail.com

FIND US ON FACEBOOK

2025 AI BOOK



NJW 51G 87G MAN UP 255K {DLF,HYF,IEF,MSUDF,MDF,DBF}

P44401828

Calved: 8/3/22 — Tattoo: LE 255K/RE 51G

/S MANDATE 66589 ET {DLF,HYF,IEF,MSUDF,MDF,DBF}

NJW 133A 6589 MANIFEST 87G ET {DLF,HYF,IEF,MSUDF,MDF,DBF}

P44057384 BW NJW 76S 8Y HOMESPUN 133A {DLF,HYF,IEF,MSUDF,MDF}

SHF ZANE X51 Z115 {CHB}{DLF,HYF,IEF,MDF,DBF}

NJW 10E Z115 DAYLE 51G {DLF,HYF,IEF,MSUDF,MDF}

P44057256 NJW 4C 028X DAYLE 10E {DLF,HYF,IEF,MSUDF,MDF}

CE	BW	WW	YW	DMI	SC	SCF	MM	M&G	MCE
13.1	-0.8	61	99	0.4	1.5	24.4	36	67	8.0
MCW	UDDR	TEAT	CW	FAT	REA	MARB	BMI\$	BIIS	CHBS
80	1.30	1.20	82	0.072	0.72	0.17	488	575	137



SEMEN: \$25/Straw; \$70/Certificate
Volume discounts available.

- Homozygous Polled
- Short marked and goggle eyed
- Calving Ease in the top 5% of the breed with an ultra-low BW of 70 lb.
- Impressive birth to yearling spread
- Stout, sound footed and free moving
- His thick square rump structure, depth of rib and mass of body are impressive.
- This bulls EPDs and phenotype make him an attractive choice for purebred and commercial breeders.

Semen for
NJW 51G 87G
MAN UP 255K
please contact Jake Rees
801-668-8613



2230 East Rees Ln. • Morgan, UT 84050
Scott Rees 801-949-8960 • Jake Rees 801-668-8613
reescattle@gmail.com
www.reescattle.com



KRM 9160 FOLLOW ME 8G L35 ET {DLF,HYF,IEF,MSUDF,MDF,DBF}

P44460921

Calved: 2/3/23 - Tattoo: LE L35/RE KRM

CE	BW	WW	YW	DMI	SC	SCF	MM	M&G	MCE
4.7	2.8	64	95	0.3	0.5	28.9	28	60	4.5
MCW	UDDR	TEAT	CW	FAT	REA	MARB	BMIS	BIIS	CHBS
99	1.40	1.50	95	0.012	0.96	0.37	591	694	177

JDH 11B STUD 3134 63E {CHB}{DLF,HYF,IEF,MSUDF,MDF,DBF}

JDH AH BENTON 8C ET {CHB}{DLF,HYF,IEF,MSUDF,MDF,DBF}

P44014184

JDH AH MS 34X VICTOR 33Z45C ET {DLF,HYF,IEF,MSUDF}

NJW 79Z Z311 ENDURE 173D ET {SOD}{CHB}{DLF,HYF,IEF,MSUDF,MDF,DBF}

UPS MISS ENDURE 9160 {DLF,HYF,IEF,MSUDF}

P44051070

UPS MISS 88X RIBEYE 4435 ET



SEMEN: \$40/Straw; \$70/Certificate

For semen and certificates, contact:

Reed Enterprises 417-860-3102

- L35 is a Benton 8G son out of an Endure daughter that was purchased from Upstream Ranch.
- L35 is as flawless in his design and as complete as any bull that you will find, big footed, thick and lots of middle.
- This bull is impressive from every angle and will add the look that Hereford breeders desire.



KRM 9160 FOLLOW ME 8G L35 ET

2024 American Royal Grand Champion Bull

2025 Ft. Worth Stock Show Division Champion Bull



103 Earl McGuffee Rd.
New Hebron, MS 39140
Ryan McGuffee 601-668-1000
www.mcguffeeherefords.com



9767 Quay Rd O
Nara Visa, NM 88430
575-403-7971
info@perezcattleco.com
www.perezcattleco.com



CHURCHILL BR 5JNATIONWIDE I79J {CHB}{DLF,HYF,IEF,MSUDF,MDF}

P44268920

Calved: 1/25/21 - Tattoo: LE179

CE	BW	WW	YW	DMI	SC	SCF	MM	M&G	MCE
9.2	1.9	67	94	0.5	1.5	24.6	24	57	6.4
MCW	UDDR	TEAT	CW	FAT	REA	MARB	BMI\$	BIIS	CHBS
114	1.40	1.40	91	0.032	0.87	0.61	528	647	185

CL 1 DOMINO 7131E 1ET {DLF,HYF,IEF,MSUDF}

CL 1 DOMINO 942C {CHB}{DLF,HYF,IEF,MSUDF,MDF}

44010158

CL 1 DOMINETTE 664D 1ET {DLF,HYF,IEF,MSUDF}



EFBEEF BR VALIDATED B413 {SOD}{CHB}{DLF,HYF,IEF,MSUDF,MDF,DBF}

BR VALIDATED B413 6035 7098 {DLF,HYF,IEF,MDF,DBF}

P43857421

BR BENNETT 4R Y428 2101 6035 {HYP,DBP}

SEMEN: \$25/Straw; \$50/Certificate

Contact: Reed Enterprises 417-860-3102

— Sired by a horned Hereford elite from the Rocky Mountains of Montana by one of the most popular dams out of the plains of Oklahoma and on his way to the sandy coast of North Carolina, Churchill Nationwide will add carcass merit and quality and accomplish your goals in any herd — horned and polled alike, coast to coast, nationwide.



BR VALIDATED B413 6035 7098

- Dam



103 Earl McGuffee Rd.
New Hebron, MS 39140
Ryan McGuffee 601-668-1000
www.mcuffeeherefords.com



Farm Manager, Will Standley, 984-480-9054
Herd Manager, Zack, 919-608-8882
84 Austin Farm Ln.
Clayton, NC 27520
Jody Standley 919-291-4212

FINAL CHANCE 02L

MKS 0016 99J {DLF, HYF, IEF, MSUDF}



BW (lb)	63
WW (lb)	590
YW (lb)	1180
22m (lb)	1745

CE	BW	WW	YW	DMI	SC	SCF	MM	MG	MCE
6.4	1.2	79	125	0.2	1.1	23.8	34	74	-3.3
25%	20%	1%	2%	35%	42%	6%	12%	2%	95%

MCW	UDDR	TEAT	CW	FAT	REA	MARB	BMI	BII	CHB
101	1.6	1.7	102	0.062	0.69	0.28	518	629	181
73%	1%	1%	1%	91%	14%	17%	2%	2%	2%

P44464735

Calved: 2/2/2023 - Tattoo: LE 02L/ RE AKD



MKS 0016 99J FINAL CHANCE 02L



JDH AH ND 16G BELLE 99J ET

BOYD 31Z BLUEPRINT 6153 {DLF, HYF, IEF, MSUDF, MDF, DBF}
RST FINAL PRINT 0016 {CHB, DLF, HYF, IEF, MSUDF, MDF}
 P44178105 RST MS X651 TESTED 8032 {DLF, HYF, IEF, MSUDF, MDF, DBF}
 JDH AH STANDOUT 16G ET {CHB, DLF, HYF, IEF, MSUDF, MDF}
JDH AH ND 16G BELLE 99J ET {DLF, HYF, IEF, MSUDF}
 P44242730 AH 719 BELLE 125B {DLF, HYF, IEF}



Scan QR Code
for video

- **HOMOZYGOUS POLLED**
- 100% Pigmented
- Heifer Acceptable
- 10 EPD Traits in top 10%
- Top 2% FOR YW, MG, BMI, BII, & CHB
- Top 1% FOR WW, UDDR, TEAT & CW
- Out of a first calf heifer

SEMEN
\$40/STRAW
 NON-CERTIFICATE



CONTACT:
 AJ DANIEL 615-962-3614
 KENDRA DANIEL 615-545-5755





CRR 66589 BALANCE 107 {DLF,HYF,IEF,MSUDF,MDF,DBF}

P44296384

Calved: 2/1/21 — Tattoo: BE 107

R LEADER 6964 {SOD}{DLF,HYF,IEF,MSUDF,DBF}
/S MANDATE 66589 ET {DLF,HYF,IEF,MSUDF,MDF,DBF}
 P43834732 /S LADY DOMINO 0158X {DLF,HYF,IEF}

NJW 73S W18 HOMEGROWN 8Y ET {SOD}{DLF,HYF,IEF,MSUDF,MDC,DBF}
CRR 8Y ECLIPSE 9102 {DLF,HYF,IEF,MSUDF,MDC}
 P44073981 CRR 021 ECLIPSE 281 {DOD}{DLP,HYP}

CE	BW	WW	YW	DMI	SC	SCF	MM	M&G	MCE
9.0	-0.5	70	112	0.8	1.8	25.3	39	74	-0.4
MCW	UDDR	TEAT	CW	FAT	REA	MARB	BMIS	BIIS	CHBS
96	1.30	1.40	83	0.112	0.59	0.21	491	592	127



SEMEN: \$50/Straw; Non-Certificate

- HOMOZYGOUS POLLED
- Balanced set of numbers with a BIG spread
- Super sound with a beautiful stride
- Impeccable phenotype
- Member of CRR's 2022 NWSS Champion Pen of Three
- Proven calving ease with performance and quality
- First daughters are coming in production now. They're very feminine, broody and have amazing udder and teat scores.



Balance Bull Calf



Balance Heifer Calf



18300 Co. Rd. 43 • La Salle, CO 80645
 Jane Evans Cornelius • 970-371-0500 cell
 Hampton and Kay • 970-396-2935 cell
www.coyoteridgeherefords.com

HME HEREFORDS

Hardy Edwards
 505 Lem Edwards Rd. • Winterville, GA 30683
 Hardy 706-714-9012 • Kim 706-206-6725
www.HMEHerefords.com



CRR I56J WIND RIVER 347 {DLF,HYF,IEF,MSUDF,MDF,DBF}

P44507524

Calved: 2/12/23 - Tattoo: BE 347

NJW 79Z Z311 ENDURE 173D ET {SOD};{CHB}{DLF,HYF,IEF,MSUDF,MDF,DBF}
NJW 202C I73D STEADFAST I56J ET {CHB}{DLF,HYF,IEF,MSUDF,MDF,DBF}
 P44276463 NJW 160Z 8Y HOME MAKER 202C {DLF,HYF,IEF,MSUDF,MDC,DBF}

NJW 160B 028X HISTORIC 81E ET {DLF,HYF,IEF,MSUDF,MDF,DBF}
CRR 81E ECLIPSE 033 {DLF,HYF,IEF,MSUDF,MDF,DBF}
 P44185614 CRR 156T ECLIPSE 558 ET {DOD};{DLF,HYF,IEF,MSUDF}

CE	BW	WW	YW	DMI	SC	SCF	MM	M&G	MCE
-0.7	2.8	66	104	0.7	1.4	26.9	44	77	-0.2
MCW	UDDR	TEAT	CW	FAT	REA	MARB	BMI\$	BIIS	CHBS
97	1.30	1.30	96	0.092	0.85	0.27	541	640	152



SEMEN: \$40/Straw; \$75/Certificate

- Wind River 347 is a power bull that is a highly versatile breeding tool. Maternal efficiency, excellent growth at weaning and yearling along with high carcass values and profit indexes are stacked into 347's pedigree.
- His phenotype is impeccable. Wind River is built right from the ground up. Big foot, deep massive rib cage and has a powerful square hip.
- He has the breed character and masculinity that CRR demands from our herd bulls.
- Natural calf backed by a powerful and highly functional cow family – generations of Dams of Distinction.
- Use Wind River to build a maternal base and produce high quality sought after sons.
- Lead off bull in CRR's Grand Champion Pen, Denver 2024.
- Wind River was the heaviest used sire at CRR in 2024.
- HOMOZYGOUS POLLED



CRR 81E ECLIPSE 033
– Dam



18300 Co. Rd. 43 • La Salle, CO 80645
 Jane Evans Cornelius • 970-371-0500 cell
 Hampton and Kay • 970-396-2935 cell
www.coyoteridgeherefords.com



LAND LINCOLN 3029 ET {DLF,HYF,IEF,MSUDF,MDF,DBF}

P44497442

Calved: 4/2/23 - Tattoo: BE 3029

JDH VICTOR 719T 33Z ET {SOD}{CHB}{DLF,HYF,IEF,MSUDF,DBF}

JDH AH LINCOLN I06H ET {CHB}{DLF,HYF,IEF,MSUDF,MDF}

P44148953

AH MS 25L RUMBLER 19Z {DOD}{DLF,HYF,IEF,MSUDF,DBF}

F FINAL TEST 722 {CHB}{DLF,HYF,IEF,MSUDF,MDF,DBF}

UPS MISS FINAL TEST 9103 {DLF,HYF,IEF,MSUDF,MDF,DBF}

P44045530

UPS MISS ALTA 7035 {DLF,HYF,IEF,MDF,DBF}

CE	BW	WW	YW	DMI	SC	SCF	MM	M&G	MCE
6.1	1.7	72	112	1.0	1.0	24.3	31	67	1.2
MCW	UDDR	TEAT	CW	FAT	REA	MARB	BMI\$	BIIS	CHBS
91	1.60	1.70	87	0.032	0.68	0.39	490	600	151



SEMEN: \$25/Straw; \$25/Certificate
Bulk deals available

- Pedigree, look and performance, this bull has it all!
- Sired by the now deceased Lincoln, and out of the prominent Upstream bred donor cow, UPS Miss Final Test 9103, owned by Landgren Ranch. His pedigree is packed with bulls and females that have made permanent marks on the Hereford breed.
- 3029 was added to Friedt Herefords' bull battery to advance our polled program. He is a very complete bull that will add phenotype and genotype to any herd. Deep bodied, up headed, he has length and capacity, is wide both over his top, as well as, on the ground, AND he's got a big ole hind end.
- Take a second to examine his EPD profile and you will notice big spread from 1.7 BW to 72 WW and 112 YW, add to that his exceptional carcass traits, we feel this bull is everything today's industry needs.



UPS MISS FINAL TEST 9103

- Dam



Gary and Kirsten Friedt 701-824-2300
8733 55th St. S.W., Mott, ND 58646
Gary cell: 701-290-7231
Megan and Dusty Dukart
Megan: 701-290-7230 · Dusty: 701-730-4335
Aaron and Tation Friedt
Aaron: 701-590-9597
Lindsey and Drew Courtney
gfriedt@hotmail.com



CL I DOMINO 0186H {CHB}{DLF,HYF,IEF,MSUDF,MDF}

44139007

Calved: 1/30/20 — Tattoo: LE 186

CE	BW	WW	YW	DMI	SC	SCF	MM	M&G	MCE
6.0	0.6	64	106	0.6	1.8	19.8	40	72	5.6
MCW	UDDR	TEAT	CW	FAT	REA	MARB	BMS	BIIS	CHBS
77	1.40	1.60	92	0.062	0.58	0.34	432	530	160

HH ADVANCE 3297A ET {SOD}{CHB}{DLF,HYF,IEF}
HH ADVANCE 7156E ET {CHB}{DLF,HYF,IEF,MSUDF}
 43839853 HH MISS ADVANCE 1056Y ET {DOD}{DLF,HYF,IEF}

CL 1 DOMINO 386A 1ET {SOD}{DLF,HYF,IEF}
CL I DOMINETTE 6162D {DLF,HYF,IEF,MSUDF}
 43691847 CL 1 DOMINETTE 055X {DOD}{DLF,HYF,IEF}



SEMEN: \$50/Straw; \$75/Certificate

- The Maternal Machine!
- 0186 is a great all around sire of calving ease, growth, carcass, and the very best in maternal traits!
- His first daughters are phenomenal with ease of fleshing, high quality udders, and a 104.8 weaning ratio on their calves!
- The 0186 progeny are very easy to sell as they are loaded with eye appeal and body dimension.
- Put one of the best LI sires of our time to work for you



CHURCHILL W4 LADY 2152K



P.O. Box 126 · Willow Creek, MT 59760
 Mark Cooper 406-539-6885
 Dave Hanson 406-570-5519
 info@cooperherefords.com
www.cooperherefords.com



Dale and Nancy Venhuizen
 1862 Yadon Rd. · Manhattan, MT 59741
 Office 406-284-6421
 Dale 406-580-6421
 churchillcattle@gmail.com
www.churchillcattle.com



Dan Bixler
 Newton, IL
 618-562-3888



HH ADVANCE 3107L ET {DLF,HYF,IEF,MSUDF,MDF,DBF}

44454247

Calved: 1/13/23 — Tattoo: BE 3107

CE	BW	WW	YW	DMI	SC	SCF	MM	M&G	MCE
0.6	2.1	69	104	0.4	1.5	15.8	24	58	0.6
MCW	UDDR	TEAT	CW	FAT	REA	MARB	BMIS	BIIS	CHBS
104	1.30	1.20	82	0.032	0.51	0.24	364	458	140

CL 1 DOMINO 776E 1ET {DLF,HYF,IEF,MSUDF}

CL 1 DOMINO 001H {CHB}{DLF,HYF,IEF,MSUDF,MDF}

44138924

CL 1 DOMINETTE 8150F {DLF,HYF,IEF}

CL 1 DOMINO 2136M {DLF,IEF}

HH MISS ADVANCE 5139R ET {DLF,HYF,IEF}

42576396

HH MS ADVANCE 8037H {IEP}



SEMEN: \$100/Straw; \$75/Certificate

- 3107 was the leadoff \$70,000 front cover bull in the 2024 Holden Sale!
- He has incredible eye appeal! He is powerful yet clean made with tons of rib and shape and balance to put it all together.
- His dam 5139 is one of the stalwarts of the breed!
- His actual performance data is very impressive in every area.
- He has full pigment, a great disposition, and terrific scrotal.
- If you like great looking Hereford cattle with Line One genetics, you will love this bull! We sure do!



HH ADVANCE 3107L ET



1862 Yadon Rd. • Manhattan, MT 59741
Office 406-284-6421 • Dale 406-580-6421
churchillcattle@gmail.com
www.churchillcattle.com



Dan Bixler
Newton, IL
618-562-3888



3139 Valier Dupuyer Rd.
Valier, MT 59486
www.holdenherefords.com
jtholden@3rivers.net

Home 406-279-3301
Jack's cell 406-450-1029
Brad Holden cell 406-590-3307
Jay D Evans 406-450-0129
Eric Lawver 406-600-3118



CHURCHILL SMOKEY 3128L ET {DLF,HYF,IEF,MSUDF,MDF,DBF}

P44462190

Calved: 1/25/23 — Tattoo: LE 3128

CE	BW	WW	YW	DMI	SC	SCF	MM	M&G	MCE
12.5	-0.6	73	109	0.3	1.1	27.5	40	77	8.3
MCW	UDDR	TEAT	CW	FAT	REA	MARB	BMS	BIIS	CHBS
67	1.60	1.60	89	0.032	0.91	0.54	573	695	188

BOYD 31Z BLUEPRINT 6153 {DLF,HYF,IEF,MSUDF,MDF,DBF}

RST FINAL PRINT 0016 {CHB}{DLF,HYF,IEF,MSUDF,MDF}

P44178105

RST MS X651 TESTED 8032 {DLF,HYF,IEF,MSUDF,MDF,DBF}

EFBEEF BR VALIDATED B413 {SOD}{CHB}{DLF,HYF,IEF,MSUDF,MDF,DBF}

BR VALIDATED B413 6035 7098 {DLF,HYF,IEF,MDF,DBF}

P43857421

BR BENNETT 4R Y428 2101 6035 {HYF,DBP}



SEMEN: \$50/Straw; \$100/Certificate
Volume discounts available

- Smokey is a calving ease bull that blends the very best of breed leading EPDs with tremendous eye appeal and the very best in maternal heritage!
- He ranks in the top 4% for both CED and WW with top 1% Uddr and Teat and top 2% both REA and Marb!
- His dollar indexes are both in the top 1%.
- Smokey's full sister is an ideal two year old heifer and is one of the most treasured females in the Churchill program!
- Smokey's first calves have lots of pigment, calve easily, and show lots of shape and structure!
- Smokey has been raved about by all who see him!



CHURCHILL LADY 3121L ET

Full sister to Smokey



1862 Yadon Rd. • Manhattan, MT 59741
Office 406-284-6421 • Dale 406-580-6421
churchillcattle@gmail.com
www.churchillcattle.com



JENNINGS LAND AND CATTLE
27511 Route 111 • Palmyra, IL 62674
Roger Jennings 217-825-6147
Jake West 217-248-9525



CHURCHILL W4 SHERMAN 2157K ET {DLF,HYF,IEF,MSUDF,MDF,DBF}

P44378036

Calved: 2/7/22 — Tattoo: LE 2157

KCF BENNETT TRUST B279 ET {CHB}{DLF,HYF,IEF,MDF,DBC}

KCF BENNETT RESOLVE G595 {CHB}{DLF,HYF,IEF,MSUDF,MDF,DBC}

P44105347

KCF MISS TESTED C422 {DLF,HYF,IEF,MSUDF}

EXR BANKROLL 8130 ET {DLF,HYF,IEF,MDF,DBF}

CHURCHILL LADY 079H ET {DLF,HYF,IEF,MSUDF,MDF,DBF}

P44149885

CHURCHILL LADY 7189E ET {DLF,HYF,IEF,MSUDF,MDF,DBF}

CE	BW	WW	YW	DMI	SC	SCF	MM	M&G	MCE
0.2	1.9	67	109	0.5	1.4	21.0	25	59	-0.4
MCW	UDDR	TEAT	CW	FAT	REA	MARB	BMI\$	BIIS	CHBS
90	1.40	1.50	105	0.072	1.08	0.48	484	593	195



SEMEN: \$100/Straw; Non-Certificate
Sexed female and sexed male available

- Sherman has taken the breed by storm with his sons and daughters!
- He sired the Champion Pen of Three Bulls for Colyer Herefords in Denver!
- His first 26 sons averaged \$20,000 in the Churchill Bull Sale!
- His EPDs are excellent with top 10% udder quality, top 1% CW and REA and top 4% Marb.
- His CHB is in the top 1% and BMI in the top 5%.
- Sherman's dam is one of the best cows in the breed and she has an ideal udder!
- Contact Churchill for regular straws or sexed female or sexed male.



CHURCHILL STAMPEDE 486M ET

\$175,000 son of Sherman



1862 Yadon Rd. • Manhattan, MT 59741
Office 406-284-6421 • Dale 406-580-6421
churchillcattle@gmail.com
www.churchillcattle.com



1809 FM 927 • Morgan, TX 76671
Office 254-635-4444 • Jeff Chaffin 254-396-2785
jeff@w4ranch.com
www.w4ranch.com

OTHER OWNERS:

XA Cattle, NE
Storey Herefords, MT
Ade Polled Herefords, IN

Topp Herefords, ND
Rausch Herefords, SD
Colyer Herefords, ID
Bill King Ranch, NM

Cane Creek, SD
Gene Stillahn, WY
The Berrys, WY



CHURCHILL STANFIELD 3122L {DLF,HYF,IEF,MSUDF,MDF,DBF}

44462187

Calved: 1/23/23 — Tattoo: LE 3122

CE	BW	WW	YW	DMI	SC	SCF	MM	M&G	MCE
1.8	4.6	79	136	1.0	1.8	21.9	44	84	4.5
MCW	UDDR	TEAT	CW	FAT	REA	MARB	BMI\$	BIIS	CHBS
77	1.20	1.40	92	0.022	0.76	0.33	466	578	163

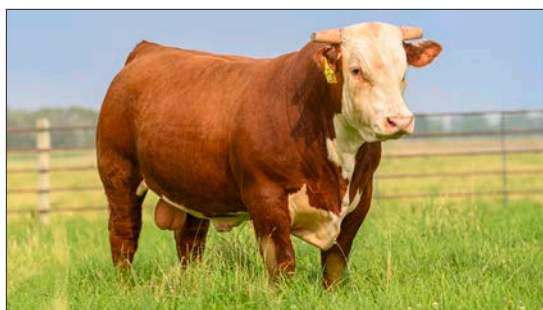
CHURCHILL ROUGH RIDER 719E {DLF,HYF,IEF,MSUDF}
CHURCHILL ROUGHNECK 0280H ET {DLF,HYF,IEF,MSUDF,MDF,DBF}
 44198621 CHURCHILL W4 LADY 770E {DLF,HYF,IEF}

CHURCHILL GALLATIN 5211C ET {DLF,HYF,IEF,MSUDF}
CHURCHILL LADY 890F {DLF,HYF,IEF,MSUDF}
 43919959 CHURCHILL LADY 4222B



SEMEN: \$100/Straw; Non-Certificate
 Foreign semen available

- Stanfield is the record selling \$130,000 horned bull from the 2024 Churchill Bull Sale selling to Stuber Ranch!
- He is a power bull with exceptional thickness, ruggedness, and quality!
- Stanfield is in the top 1% for WW, YW, Milk, and top 4% for scrotal.
- He is in the top 9% for BMI and top 5% for CHB!
- Stanfield is owned by and is being heavily used by some of the top breeding programs in the country!
- His first calves at Churchill are stout made and very fast growing with excellent pigment.



CHURCHILL ROUGHNECK 0280H ET
 — Sire of Churchill Stanfield 3122L



1862 Yadon Rd. • Manhattan, MT 59741
 Office 406-284-6421 • Dale 406-580-6421
 churchillcattle@gmail.com
www.churchillcattle.com

STUBER RANCH

7606 149th Ave. S.W., Box 56 • Bowman, ND 58623
 Rober 701-523-5371
 Duane 701-523-3496
 Mac 701-440-0015
 Sale Barn 701-523-3522
 ddstuber@ndsupernet.com
www.stuberranch.com

ADDITIONAL OWNERS:

W4 Ranch, TX
 Largent and Sons, WY
 Mrnak Herefords, ND
 Stephenson Herefords, ID
 Krebs Ranch, NE
 Pied Piper Farms, TX
 Upstream Ranch, NE
 Beery's Land Livestock, MT
 Hoffman Ranch, NE
 Stellpflug Cattle, WY
 Pete Loehr, IL
 Gene Stillahn, WY



WALKER FULL CIRCLE 3511ET {DLF,HYF,IEF,MSUDF,MDF,DBF}

P44454927

Calved: 2/8/23 - Tattoo: LE 3511

CE	BW	WW	YW	DMI	SC	SCF	MM	M&G	MCE
9.8	1.8	74	112	0.7	0.9	22.7	23	60	6.0
MCW	UDDR	TEAT	CW	FAT	REA	MARB	BMI\$	BIIS	CHBS
125	1.50	1.50	104	0.072	1.07	0.51	507	626	190

CL 1 DOMINO 942G {CHB}{DLF,HYF,IEF,MSUDF,MDF}
CHURCHILL BR 5JNATIONWIDE 179J {CHB}{DLF,HYF,IEF,MSUDF,MDF}
 P44268920 BR VALIDATED B413 6035 7098 {DLF,HYF,IEF,MDF,DBF}

F FINAL TEST 722 {CHB}{DLF,HYF,IEF,MSUDF,MDF,DBF}
WALKER TORI 722 B101 950C {DLF,HYF,IEF,MSUDF}
 P44012828 WALKER TORI X51 911 B101 ET {DLF,HYF,IEF,MSUDF}



SEMEN: \$50/Straw; \$75/Certificate

- Homozygous Polled
- Recommended for use on heifers
- Superior elite genetics. We strive to produce cattle with elite phenotype, genotype and EPD profiles like we have here. We were mindful of making this mating to raise bulls like Full Circle to be able to offer outcross genetics to the purebred breeder. Heavily used in the /W program as he gives such a diverse pedigree to us in a unique phenotypic aspect.
- Full Circle 3511 is enrolled in the NRSP program at Olsen Ranches in Nebraska.
- Ranks in the top 10% for 10 traits and all three indexes



CHURCHILL BR 5JNATIONWIDE 179J
 - Sire



WALKER HEREFORDS
 P.O. Box 146
 Morrison, TN 37357
 Eric Walker 931-607-6356
 wphf@benlomand.net
 Cody Walker 931-607-0337
 Conner Jagers 270-218-1820



20509 E-Courtney Atherton
 Independence, MO 64058
 Brian Mundy 816-668-4521
 bmundy.whisperingwinds@gmail.com
 Jake Mundy 816-313-9488
 jmundy.whisperingwinds@gmail.com



WLKR JH MAXIMUM 9244 3110L ET {DLF,HYF,IEF,MSUDF}

P44534952

Calved: 9/19/23 - Tattoo: LE 3110

JW X651 TESTED 1857 ET {CHB}{DLF,HYF,IEF,MSUDF,MDF}

JW 1857 MERIT 21134 {DLF,HYF,IEF,MSUDF,MDF,DBF}

P44212986

JW 33Z VICTORIA 19027 {DLF,HYF,IEF,MSUDF}

F FINAL TEST 722 {CHB}{DLF,HYF,IEF,MSUDF,MDF,DBF}

WLKR JH ROSE 722 172C 9244 {DLF,HYF,IEF,MSUDF}

P44122247

CMF 64Z ROSE 172C {DLF,HYF,IEF,MSUDF}

CE	BW	WW	YW	DMI	SC	SCF	MM	M&G	MCE
4.0	2.4	83	134	0.9	1.6	20.2	38	80	0.6
MCW	UDDR	TEAT	CW	FAT	REA	MARB	BMI\$	BIIS	CHBS
133	1.30	1.30	107	0.012	0.81	0.48	475	599	198



SEMEN: \$30/Straw; \$75/Certificate

- Homozygous Polled
- Recommended for use on heifers
- We all search the U.S. for bulls like 3110, that put it all together from a phenotype, genotype and EPD standpoint. 3110 is a high growth bull that comes along with a moderate BW, along with added maternal traits and elite added carcass being a 198 on CHBS. When you study this standout from a phenotype aspect, he is big boned, wide based with worlds of middle and spring of rib. This stout featured son of Merit is out of the popular AI sire and CHBS\$ sire for Tennessee River Music and Waggoner Cattle Co. 9244 the dam of 3110 is the most recent lot 1 in the /W FFTF Sale commanding \$13,500 to Morris Cattle Co. in Texas. 9244 is one of the most famed donors raised here in the last several years. Many maternal sibs are currently working in herds across the nation.
- Ranks in the top 10% for 8 traits and all three indexes



**WLKR JH ROSE
172C 9244**

- Dam



JW 1857 MERIT 21134

- Sire



WALKER HEREFORDS

P.O. Box 146
Morrison, TN 37357
Eric Walker 931-607-6356
wphf@benlomand.net
Cody Walker 931-607-0337
Conner Jagers 270-218-1820



CARDINAL CREEK CATTLE CO.

8481 15th St. N.W.
Willmar, MN 56201
Robert Orsten 320-894-5286
RJ Orsten 320-894-0171
rj@cardinalcreekcattle.co



WLKR JH INCENTIVE 799E 0423 ET {CHB}{DLF,HYF,IEF,MSUDF,MDF,DBF}

P44247640

Calved: 9/30/20 - Tattoo: LE 0423

CE	BW	WW	YW	DMI	SC	SCF	MM	M&G	MCE
7.7	1.7	67	105	0.3	1.2	25.6	34	68	4.8
MCW	UDDR	TEAT	CW	FAT	REA	MARB	BMI\$	BIIS	CHBS
99	1.40	1.50	112	0.052	1.38	0.27	562	658	193

KCF BENNETT ENCORE Z311 ET {SOD}{CHB}{DLF,HYF,IEF,MSUDF,MDF,DBF}

NJW 79Z Z311 ENDURE I73D ET {SOD}{CHB}{DLF,HYF,IEF,MSUDF,MDF,DBF}

P43722088

BW 91H 100W RITA 79Z ET {DLF,HYF,IEF,MSUDF,MDF}

CL 1 DOMINO 215Z {SOD}{CHB}{DLF,HYF,IEF,MSUDF,MDF}

WALKER JH ROSE 215Z 4209 799E {DOD}{DLF,HYF,IEF,MDF,DBF}

P43906467

WALKER JH ROSE 4R 87W 4209 {DBP}



SEMEN: \$40/Straw; Non-Certificate

- We can't say enough about what Incentive has done for our program. 0423 stamps his progeny boosting genomics in the right direction along with adding pigment and quality to his offspring. 0423 is a long, deep sided son of Endure. His dam, 799E, has been one of our all-time great producing donor cows. If you're looking to add performance, pigment and prestige to your herd this is the one to latch on too. The calves sired by Incentive have been highly sought after in our past sales.
- A daughter pictured was a top seller in our 2023 sale to GKB Cattle, TX.
- 0423 is in the top 1% of the Hereford population for REA and CW.
- Top 1% for all three indexes.



**WALKER JH ROSE
215Z 4209 799E**

- Dam



**WLKR FAF JH LUCY
0423 3233**

- Daughter



WALKER HEREFORDS

P.O. Box 146
Morrison, TN 37357
Eric Walker 931-607-6356
wphf@benlomand.net
Cody Walker 931-607-0337
Conner Jagers 270-218-1820

SKRIVANEK RANCHES

407 W. Mustang
Caldwell, TX 77836
Ranch Location: 8801 Hwy. 21 E., Caldwell
Joey Skrivaneck 979-224-4698
j.skrivaneckranch@outlook.com

MORRIS HEREFORD FARM

P.O. Box 1510
Carthage, TX 75633
Bob Morris 903-563-3715
rmorris@carthageisd.org

YOUR MOST TRUSTED SOURCE FOR SEMEN & CERTIFICATES FOR 50 YEARS!!

**B
U
L
L
S

P
A
S
T
A
N
D

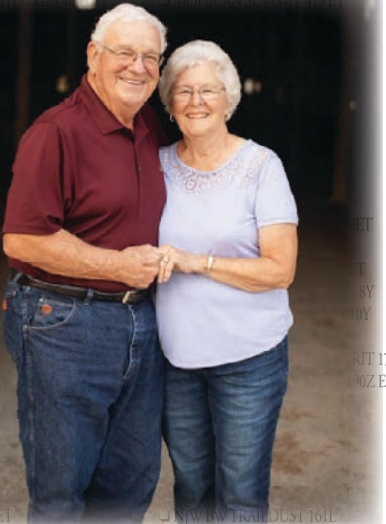
P
R
E
S
E
N
T**

- ❑ AA PRF WIDELOAD
- ❑ AB JWR DEMOLITION 6008 3510
- ❑ AB PRINCE DOMINO
- ❑ AH JDH CRACKER JACK 26U
- ❑ BAR JZ TRADITION 434V
- ❑ BECKLEY 758P ONTIME 934S
- ❑ BKR TRIPLE PLUS 73C 20L
- ❑ BOYD MASTERPIECE 0220
- ❑ BOYD NJW STAND OUT 0091 ET
- ❑ BOYD POWERHOUSE 2028
- ❑ BOYD WORLDWIDE 9050
- ❑ BR CSF WALLACE 7055 ET
- ❑ BR CURRENCY 8144 ET
- ❑ BR DESERT RED 6059
- ❑ BR DM CHANNING
- ❑ BR DM TNT 7010
- ❑ BRAXTON GIANT 1
- ❑ BT CL DOMINO 15G
- ❑ CL I DOMINO 0130X
- ❑ CL I DOMINO 477
- ❑ C R111 SENTINEL 2264 ET
- ❑ C ETF WILD CAT 4248
- ❑ C RENO 6142 ET
- ❑ C STOCKMAN 2059
- ❑ C&L CT FEDERAL 485T 6Y
- ❑ C-S PURE GOLD 98170
- ❑ CARPEDIEM
- ❑ CH HAWK ENUFF PROFT 2913
- ❑ CHAC MASON 2214
- ❑ CHURCHILL A1
- ❑ CHURCHILL COWBOY 1201Y ET
- ❑ CHURCHILL KICKSTART 501C ET
- ❑ CHURCHILL RANCHER 592R
- ❑ CHURCHILL RED BULL 200Z
- ❑ CHURCHILL SENSATION 028X
- ❑ CHURCHILL STUD 3134A
- ❑ CMF 103T VICTOR 262D
- ❑ CMF 584T FRONTIER 634L
- ❑ CMF 676M ON TARGET 837S
- ❑ CMR ILR DOMINO 86P
- ❑ CMR THE PROGRAM A431
- ❑ CMR TF 242 GARRETT 430
- ❑ CPH 4037 GOODNIGHT 23Z
- ❑ CRR 719 CATAPULT 109
- ❑ CRR ABOUT TIME 743
- ❑ CS BOOMER 29F
- ❑ DB GRAND SLAM
- ❑ DB HARDRIVE ET
- ❑ DELHAWK CAPTAL 0810
- ❑ DELHAWK KAHUNA 1009 ET
- ❑ DKF RO CASI 60 00 35
- ❑ DM BR L1 DOMINO 146
- ❑ DRF 4505070000 0210
- ❑ DR 7000 000000000000
- ❑ EFBEEF U208 SURE BET 2002
- ❑ EKS 127R SIR WALKER 109
- ❑ ENFORCER 107H
- ❑ FCC 7M PRIDE 35
- ❑ FCC 7M QUANTUM 2U
- ❑ FELTON 517
- ❑ FELTONS BREAKTHROUGH
- ❑ FELTONS ENDURANCE 745
- ❑ FELTONS LEGEND 242

- ❑ FELTONS OZZIE 492
- ❑ GERBER KAISER 078K
- ❑ GERBER WATCHFIRE 117F
- ❑ GH NEON 17N
- ❑ GH RAMBO 279R
- ❑ GK 327 VINDICATOR 486S
- ❑ GKB 88X LARAMIE B293
- ❑ GLENGROVE LJR MONTY M7
- ❑ GO 3196 ADVANCE S109
- ❑ GOLDEN ACHIEVER 2042
- ❑ GOLDEN OAK FUSION 3S
- ❑ GRANDVIEW 7OAKS SONORA 145R
- ❑ GRANDVW CMR NO WORRIES 9064
- ❑ GRANDVIEW VICTOR 109W
- ❑ GV CMR 248
- ❑ GV CMR 249
- ❑ GV CMR 249
- ❑ GV CMR 249
- ❑ H 8E EMERALD 4420
- ❑ H BAILOUT 174X
- ❑ H BK COLONEL
- ❑ H DIMAIO
- ❑ H EXCEL 1000
- ❑ H H PERFECTION
- ❑ H W4 GRAY
- ❑ H WR PURSUE
- ❑ H WCCAV
- ❑ HARVIE HAWK
- ❑ HARVIE HAWK
- ❑ HARVIE HAWK
- ❑ HARVIE HAWK
- ❑ HB STAR
- ❑ HCC LFC
- ❑ HCCTRUFF
- ❑ H EASY DEAL 605 ET
- ❑ HF 4L BEYOND 36N
- ❑ HH ADVANCE 1098Y
- ❑ HRP CES VICTOR 964 44B
- ❑ HRP THM VICTOR 109W 9329 "RUSTY"
- ❑ HYALITE ON TARGET 95
- ❑ ILR REF POWER 440
- ❑ JB LCC QUAGMIRE 506
- ❑ K&B SENTINEL 0042X
- ❑ KCF BENNETT 3008 M326
- ❑ KCF BENNETT 3008 M326
- ❑ KCF BENNETT 3008 M326
- ❑ KCF BENNETT 3008 M326
- ❑ KCF BENNETT 3008 M326
- ❑ KCF BENNETT 3008 M326
- ❑ KCF BENNETT 3008 M326
- ❑ KCF BENNETT 3008 M326
- ❑ KCF BENNETT 3008 M326
- ❑ KCF BENNETT 3008 M326
- ❑ KCF BENNETT 3008 M326
- ❑ KCF BENNETT 3008 M326
- ❑ KL0681 MANHATTAN 262S
- ❑ KL0681 MANHATTAN 262S
- ❑ KL968R POLLED SOLUTION 608Z
- ❑ KJ C&L J119 LOGIC 023R ET
- ❑ KJ HVH 33N REDEEM 485T ET
- ❑ KJ TMG 226K TEBOW 646Z
- ❑ KLONDIKE 28U 707B

- ❑ KT JOHN WAYNE 7167
- ❑ KT TOP SECRET 1030
- ❑ L3 WINN RAMBO 851
- ❑ LAGRAND RELOAD 80P
- ❑ LANGFORD 20/20 VISION
- ❑ LCC BACK N TIME ET
- ❑ LCC FBF TIME TRAVELER 480
- ❑ LJR 023R WHITMORE 10W
- ❑ LJR MSU GF COLD FUSION 52Z ET
- ❑ LOEWEN 33T 19W
- ❑ MC RANGER 9615
- ❑ MCR TRUST HARLAND 364 ET
- ❑ MOHICAN EUREKA 67J
- ❑ MOUNTAIN SUMMIT 415 ET
- ❑ NJW BW TRAILDUST 161L
- ❑ NS KENO 005
- ❑ NS LAKES KILO 002
- ❑ OR DOM 549 F243
- ❑ PHH PCC 812 TRUE GRIT 002
- ❑ PURPLE CURRENCY 242U ET
- ❑ PURPLE MB WOMANIZER 14U ET
- ❑ PURPLE MILSAP 45S
- ❑ PURPLE REUBEN JAMES 40A ET
- ❑ PURPLE REUBEN JAMES 40A ET
- ❑ PW BARB PLAIN TOM
- ❑ PW MOHICAN NASDAQ P116
- ❑ PW TRIPLE DREAM 406G
- ❑ PWF VICTORY LANE P415
- ❑ PZ ZOWIE
- ❑ REMITALL ROOMER 440
- ❑ REMITALL EMBRACER 8E
- ❑ REMITALL EMBRACER 8E
- ❑ REMITALL PATRIOT ET 13P
- ❑ REMITALL PATRIOT ET 13P
- ❑ REMITALL PATRIOT ET 13P
- ❑ REPT ALL 1006 346R ET
- ❑ REPT ALL 1006 346R ET
- ❑ REPT ALL 1006 346R ET
- ❑ RF 156T MR MATERNAL 63A
- ❑ RF POSTIVE PLUS 73C
- ❑ RHF IGT VICTOR 103T
- ❑ RL BIG TIME 005B

- ❑ RS 45P MAGNUM 91Y
- ❑ RST 1030 TOP SECRET 7011
- ❑ SB 54E 75R FUSION 138X ET
- ❑ SB 122L GIT-R-DONE 19R ET
- ❑ SCHU-LAR ON TARGET 22S
- ❑ SFR DEAL OR NO DEAL ET
- ❑ SHF ALL STAR 42X A191
- ❑ SHF INTERSTATE 20X D03
- ❑ SHF KENNEDY 502R X36
- ❑ SHF LIMELIGHT W18 Y83
- ❑ SHF LITERAL W18 Y91
- ❑ SHF MARSHAL 236G M33
- ❑ SHF PHOENIX M33 P68
- ❑ SHF RADAR M326 R125
- ❑ SHF VISION R117 U38
- ❑ SHF WONDER M326 W18
- ❑ SHF WYATT P20 W013
- ❑ SHF YORK 19H Y02
- ❑ SHOWTIME EXCEED 230
- ❑ SLDK VENDETTA V-9 ET
- ❑ SSF JJD SHREK 669
- ❑ STAR 12G PALLADIN 115N
- ❑ STAR 8006 ENYETO 163M ET
- ❑ STAR BRIGHT FUTURE 533P
- ❑ STAR GERBER VISION 053
- ❑ STAR KKH SSF BRIGHT KELLY 408 ET
- ❑ STAR KKH SSF TYMELESS 506X
- ❑ STAR MARKET INDEX 70X ET
- ❑ STAR OBF BOGART 5L
- ❑ STAR PPL BULLET 388T ET
- ❑ STAR TCF SHOCK & AWE 158W ET
- ❑ TDP CROSSOVER Z400
- ❑ TDP VINTAGE 402U ET
- ❑ TFR CYRUS 225 ET
- ❑ TH 75J 243R BAILOUT 144U
- ❑ TH 122 711 VICTOR 719T
- ❑ TH 133U 719T UPGRADE 69X
- ❑ TH SHR 605 57G BISMARCK 243R ET
- ❑ THM DURANGO 4037
- ❑ THM EASY CHOICE 5052
- ❑ THM SLEEP EASY 3060
- ❑ TR7 44C TOTAL L176 5010
- ❑ TR GENETIC CHOICE 7084
- ❑ UPS JOURNEY 1ET 42
- ❑ UPS ODYSSEY
- ❑ UPS TCC NITRO 1ET
- ❑ WALKER AUTHOR X51 W19 33Z
- ❑ WHEHAWK 4R REVOLUTION 2328
- ❑ WJ WINGLE
- ❑ WORR OWEN TANKERAY Y79D
- ❑ WYATT 1006 346R ET



A very deep appreciation to all of our customers for 50 years.

**ONE STOP SHOPPING FOR ALL
YOUR SEMEN AND CERTIFICATE NEEDS.
ACCESS OUR WEBSITE WWW.REEDENT.COM
FOR PEDIGREES, PICTURES AND EPDS.
IF YOU DON'T SEE IT—CALL!**



REED ENTERPRISES
Jim and Linda Reed
 Call • Email • Text • Mail

660-527-3507 • reedent@iland.net • 417-860-3102
 P.O. Box 126 • Green Ridge, MO 65332



CSR 73D VALENTINO B413 40H {CHB}{DLF,HYF,IEF,MSUDF,MDF}

P44172186

Calved: 2/9/20 — Tattoo: LE 40H

CE	BW	WW	YW	DMI	SC	SCF	MM	M&G	MCE
2.4	1.5	61	93	0.4	1.4	24.6	33	64	5.9
MCW	UDDR	TEAT	CW	FAT	REA	MARB	BMIS	BIIS	CHBS
78	1.20	1.20	82	0.052	0.91	0.73	528	650	189

EFBEEF TFL U208 TESTED X651 ET {SOD}{CHB}{DLF,HYF,IEF,MSUDF}

EFBEEF BR VALIDATED B413 {SOD}{CHB}{DLF,HYF,IEF,MSUDF,MDF,DBF}

P43558667

EFBEEF 4R THYRA Y865 {DLF,HYF,IEF,MDF,DBC}

CMR THE PROGRAM A431 {SOD}{DLF,HYF,IEF}

CSR A43I VICKIE 73D {DLF,HYF,IEF,MSUDF}

P43689402

CSR GAUCHO LASS 73A



**SEMEN: \$25/Straw, 5 straw minimum;
\$65/certificate; 25 straws for \$500**

HOMOZYGOUS POLLED

- One of the biggest framed and thickest sons of Validated you will find.
- Big footed and sound
- 23 years of ultrasound data by same technician.
- Dam and grandam still producing in our herd.
- Great grandam produced 14 calves in 15 years with a calving interval of 366 days.
- Eye pigment in both eyes.
- BW 80 lb., WW 755 lb., YW 1,175 lb.
- REA 16.06, ratio 108
- MARB 4.70, ratio 119



MLR I17E VALENTI 40H 21M

44583876 — Outstanding herd bull prospect — Dark in color eye pigment stout
— Great numbers — He is for sale

**REED
FARMS**
Registered Polled
Herefords

Jim and Linda Reed
Craig, Natalie, Macy, Mallory & Maggie Reed
P.O. Box 126
Green Ridge, MO 65332
660-527-3507
reedent@iland.net
www.reedent.com

WATCH FOR TOBY IN THE OLSEN RANCHES NRSP DATA IN THE MARCH HEREFORD WORLD!



THF MILFORD 21J

{DLF, HYF, IEF, MSUDF, MDF, DBF}

Calved: August 7, 2021 AHA # P44280369

NJW 73S M326 Trust 100W ET
{SOD, CHB, DLF, HYF, IEF, MSUDF, MDF}

BEHM 100W CUDA 504C
{CHB, DLF, HYF, IEF, MDF}

BEHM R294 Jasman 102Y
{DOD, DLF, HYF, IEF, MSUDF}

GERBER Blue Chip 002B
{CHB,DLF,HYF,IEF,MSUDF,MDF}

THF Millie 10D
{DLF, HYF, IEF, MSUDF, MDF}

THF Madison 2B



As of January 2025

HOMOZYGOUS POLLED

- High calving ease and low birth weight
- Excellent maternal characteristics
- High growth and carcass performance traits
- 13 EPD traits in the top 25%
- CHB +\$149

#	CE (%)	BW (lb)	WW (lb)	YW (lb)	DMI (lbs)	SC (cm)	SCF (%)	MM (lb)	MG (lb)	MCE (%)	MCW (lb)	UDDR (%)	TEAT (%)	CW (lb)	FAT (in)	REA (sq.in)	MARB (deg.)	BMI (\$)	BII (\$)	CHB (\$)
EPD	13.9	0.0	59	93	0.1	1.6	12.8	34	64	7.5	64	1.50	1.40	71	0.002	0.39	0.36	320	409	149
ACC	.34	.46	.42	.42	.14	.38	.34	.25	-	.34	.35	.44	.44	.25	.27	.25	.26	-	-	-



THF TOBY 3H

{DLF, HYF, IEF, MSUDF, MDF, DBF}

Calved: May 6, 2020 AHA # P44154108

NJW 73S M326 Trust 100W ET
{SOD, CHB, DLF, HYF, IEF, MSUDF, MDF}

BEHM 100W CUDA 504C
{CHB, DLF, HYF, IEF, MDF}

BEHM R294 Jasman 102Y
{DOD, DLF, HYF, IEF, MSUDF}

KCF Bennett 9126J R294

THF Tuesday 1C

THF Francine 1A



As of January 2025

HOMOZYGOUS POLLED

- High calving ease and low birth weight
- Excellent maternal characteristics
- High growth and carcass performance traits
- 9 EPD traits in the top 25%
- CHB +\$148

#	CE (%)	BW (lb)	WW (lb)	YW (lb)	DMI (lbs)	SC (cm)	SCF (%)	MM (lb)	MG (lb)	MCE (%)	MCW (lb)	UDDR (%)	TEAT (%)	CW (lb)	FAT (in)	REA (sq.in)	MARB (deg.)	BMI (\$)	BII (\$)	CHB (\$)
EPD	12.6	-1.1	65	105	0.3	1.0	9.0	30	63	5.1	73	1.30	1.30	69	0.012	0.43	0.40	261	357	148
ACC	.38	.51	.47	.47	.15	.44	.38	.29	-	.38	.39	.47	.47	.30	.32	.29	.31	-	-	-

SEMEN \$25/straw; \$25/certificate
5 straw minimum

Jeff and Andrea Cramer
Apple Creek, Ohio & Fresno, Ohio
330.464.1810 | jeffcramer@hughes.net

Twin Hills
Farms



GG MCF VERIFIED MERIT 323L {DLF,HYF,IEF,MSUDF,MDF,DBF}

P44450972

Calved: 3/3/23 — Tattoo: BE 323L

JW X651 TESTED 1857 ET {CHB}{DLF,HYF,IEF,MSUDF,MDF}

JW 1857 MERIT 21134 {DLF,HYF,IEF,MSUDF,MDF,DBF}

P44212986

JW 33Z VICTORIA 19027 {DLF,HYF,IEF,MSUDF}

EFBEEF BR VALIDATED B413 {SOD}{CHB}{DLF,HYF,IEF,MSUDF,MDF,DBF}

GG MS VALIDATED B413 801F ET {DLF,HYF,IEF,MDF,DBF}

P43927890

EFBEEF 6378 KATE W484 {DLF,HYF,IEF,MSUDF}

CE	BW	WW	YW	DMI	SC	SCF	MM	M&G	MCE
7.4	2.6	78	126	0.6	1.5	19.2	33	72	5.8
19%	48%	1%	1%	87%	11%	32%	18%	4%	10%
MCW	UDDR	TEAT	CW	FAT	REA	MARB	BMI\$	BI\$	CH\$
114	1.40	1.30	109	0.042	1.08	0.70	483	615	228
91%	9%	32%	1%	75%	1%	1%	6%	3%	1%



SEMEN: \$40/Straw; \$75/Certificate

- Homozygous Polled!
- The COMPLETE PACKAGE! Genotype, phenotype, short marked, eye pigmentation and a face full of freckles.
- The genetic potential 323L holds is at the forefront of the Hereford breed and proves itself throughout his genomics and pedigree.
- Maternal grandam is the dam of EFBeeF CEO and has proven to be a breed leader in growth and carcass traits.
- The unique advantage with 323L is you get the whole package without sacrificing anything! We feel this is the kind of bull phenotypically that will produce angular and long fronted females with excellent udder quality.
- Currently enrolled in NRSP at Olsen Ranches. Ranks Top 1% in WW, YW, CW, REA, MARB and CHB.



806F

Full sib to dam of 323L

WMC
Cattle Co.

Travis McConnaughy
1199 County Rd. 116
Wasola, MO 65773
417-989-0486
info@wmccattleco.com



Randy McCaskill
1574 E. 3050th St. - Clayton, IL 62324
217-242-1262
randy.mccaskill@burrusseed.com

GREIVES
— HEREFORDS —

Bob Grieves
7591 N. Amrstrong Chapel Rd.
West Lafayette, IN 47906
765-491-6277
greivesgranite@yahoo.com



Canan McKellar
Walt and Jill McKellar
1680 LRL Rd. - Senatobia, MS 38668
662-292-1936
cmrherefords@gmail.com



LJS MARK DOMINO 2112 {DLF,HYF,IEF,MSUDF,MDF,DBF}

P44244260

Calved: 3/18/21 — Tattoo: LE 2112

CE	BW	WW	YW	DMI	SC	SCF	MM	M&G	MCE
9.4	2.7	58	94	0.7	1.0	13.8	44	73	6.2
MCW	UDDR	TEAT	CW	FAT	REA	MARB	BMIS	BIIS	CHBS
68	1.80	1.80	83	-0.008	0.90	0.44	349	440	164

LJS MARK DOMINO 1607 {DLF,HYF,IEF,MSUDF}

LJS MARK DOMINO 1826 {DLF,HYF,IEF}

P43892816

LJS MS DOMINO 1439 {DOD}{DLF,HYF,IEF}

LJS MARK DOMINO 0945 {CHB}{DLF,HYF,IEF,MSUDF}

LJS MS MARK DOMINO 1508 {DLF,HYF,IEF}

43594876

LJS MS MARK DOMINO 1204 {DLF,HYF,IEF}



SEMEN: \$30/Straw; \$75/Certificate

- **A Polled Powerhouse**
- Time tested Mark Domino genetics carrying the **polled** gene and backed by 65 years of performance testing with relentless selection for economically important traits.



2112 at 7 months with his mother

Schafer Herefords

Est. 1917

Home of the **polled** Mark Dominos

Lester and John Schafer
64664 170th St.
Buffalo Lake, MN 55314



jschafer@wildblueccop.com
John 320-582-1458
Lester 320-582-0489



INNISFAIL WS SUSTAIN 27L {DLF,HYF,IEF,MSUDF}

P44528445

Calved: 9/30/23 - Tattoo: LE 27L/RE IF

CE	BW	WW	YW	DMI	SC	SCF	MM	M&G	MCE
-0.8	4.3	73	110	0.4	0.8	21.9	32	69	-0.8
MCW	UDDR	TEAT	CW	FAT	REA	MARB	BMS	BIIS	CHBS
63	1.40	1.50	68	0.042	0.28	0.22	429	531	117

LCX PERFECTO 11B ET {DLF,HYF,IEF,MSUDF}

PYRAMID FUNCTION 0244 {DLF,HYF,IEF,MSUDF}

P44162049

FHF 3027 VICTRA 115D

R LEADER 6964 {SOD}{DLF,HYF,IEF,MSUDF,DBF}

INNISFAIL T723 6964 1923 ET {DLF,HYF,IEF,MSUDF}

P44097637

INNISFAIL P230 T723 {DLF,HYF,IEF,MSUDF}



SEMEN: \$50/Straw; Non-Certificate;
Commercial Discount Available

- Smooth Polled
- BW: 78 lbs, Adj. SC: 37 cm
- Sustain caught our attention as just a young, 60-day-old calf while touring the pastures of Innisfail Farms. 27L has since developed into a phenotypically superior bull and tested exceptionally well on feed-efficiency C-Lock bunks. Efficiency has recently become a key focus within the Hereford breed and will continue to be highly prioritized within modern-day beef production. Stay ahead of the game!
- This bull is soggy-made and dense, with an athletic design built to thrive on grass. We love 27L's foot shape, square testicles, and masculine features. Naturally raised by an attractive Leader daughter who traces back to the immortal T723 female. Sustain is precisely what we look for to make commercially-minded bulls, easy-keepin' maternal females, and feeders that'll convert forage to pounds. We are confident Sustain excels in traits that truly affect profit-minded producers' bottom line.



PYRAMID FUNCTION 0244

– Sire of Sustain



INNISFAIL T723 6964 1923 ET

– Dam of Sustain



Manning, IA
Dave: 712-210-6378
Chance: 712-210-6893
Shayne: 712-210-6895
wieseandsons@gmail.com
wieseandsons.com



INNISFAIL FARM
Madison, GA
Whitey Hunt: 706-342-5353
Weyman Hunt: 706-474-0536
Breck Debnam: 202-308-4888
info@innisfailfarm.com
www.innisfailfarm.com



MOHICAN COMPANY MAN 51J {DLF,HYF,IEF,MSUDF,MDF,DBF}

P44238686

Calved: 2/10/21 — Tattoo: LE 51J/RE MW

CE	BW	WW	YW	DMI	SC	SCF	MM	M&G	MCE
5.3	2.6	75	120	0.6	1.8	23.4	42	80	3.4
MCW	UDDR	TEAT	CW	FAT	REA	MARB	BMI\$	BIIS	CHBS
101	1.50	1.60	85	0.072	0.52	0.26	477	584	143

NJW LONG HAUL 36E ET {DLF,HYF,IEF,MSUDF,MDF,DBF}

MOHICAN SURE FIRE 76C {DLF,HYF,IEF,MSUDF,MDF,DBF}

P44023999 CHURCHILL LADY 7220E {DLF,HYF,IEF,MSUDF,DBP}

INNISFAIL WHR X651/723 4013 ET {CHB}{DLF,HYF,IEF,MSUDF,MDF}

MOHICAN ROSE 96G ET {DLF,HYF,IEF,MSUDF}

P44024034 RHF 8Y ROSE GARDEN 4067B ET {DLF,HYF,IEF,MSUDF,MDF}



SEMEN: U.S. Only: Selling 6 Semen Packages of 20 Straws/10 Certificates for \$2,500 (limited time/quantity)

- Homozygous polled
- A powerful herd sire with tremendous eye appeal.
- The first natural calf from our power donor, 96G, and sired by the calving ease specialist, Sire Fire that sold in an earlier sale to Joey Skrivanek in Texas.
- This is a cow herd building bull.
- 96G is a power donor that does it all — produces herd sires, donor daughters and quality in every way.
- One of the soundest and most athletic bulls in the breed



MOHICAN ROSE 96G ET
Dam



MOHICAN KAUDEN 20L
51J Daughter



U.S. CONTACT:
Eichler Livestock
Keith Eichler 605-228-7433
1624 Melody Ln.
Aberdeen, SD 57401

CANADIAN CONTACTS:
ANL Polled Herefords

Haroldson Polled Herefords

Derek Gaikowski - Webster, SD



PERKS PRCC 0039 GHOSTWOOD 3016 {DLF,HYF,IEF,MSUDF,MDF,DBF}

P44479954

Calved: 2/17/23 - Tattoo: BE 3016

CE	BW	WW	YW	DMI	SC	SCF	MM	M&G	MCE
3.0	2.9	78	117	1.2	1.7	26.3	41	80	2.6
MCW	UDDR	TEAT	CW	FAT	REA	MARB	BMI\$	BIIS	CHBS
107	1.30	1.20	107	0.072	0.84	0.15	526	629	144

NJW 79Z Z311 ENDURE 173D ET {SOD};{CHB};{DLF,HYF,IEF,MSUDF,MDF,DBF}

UPS HE DELIVERS 0290 ET {CHB};{DLF,HYF,IEF,MSUDF,MDF}

P44186655 UPS MISS HOMETOWN 4279 ET {DLF,HYF,IEF,MSUDF,MDF}

/S MANDATE 66589 ET {DLF,HYF,IEF,MSUDF,MDF,DBF}

PERKS 8042 MISS MANDATE 0039 {DLF,HYF,IEF,MSUDF}

P44170099 PERKS 625 DIVERSIFIED GAL 8042 {DOD};{DLF,HYF,IEF,MSUDF}



SEMEN: \$50/Straw; \$100/Certificate
Contact Tammy 770-354-4195

- Ghostwood will work in the pasture and in the show ring
- A powerful individual in a sound, fault free structure
- Dam is an up-and-coming donor at Perks Ranch sired by Mandate
- Paternal grandam is one of the most prolific and powerful donors at Upstream Ranch
- Semen quality ranked off the charts at Nichols Cryo Genetics
- Study his impressive set of data with big spread from BW to YW and doesn't sacrifice carcass
- First calves are hitting the ground this spring with a nice look and lots of vigor



**PERKS 8042
MISS MANDATE 0039**
Dam of Ghostwood

Spring Online Bull Sale
March 23, 2025
Fall Celebration Sale
October 11, 2025



12526 N. Weldon Rd. • Rockford, IL
Doug and Wade Perks
Tom Boatman 404-372-6754
Tammy Boatman 770-354-4195
tomtammy@perksranch.com
www.perksranch.com



Fred and Elaine Nessler
217-741-5500
Ranch Manager
Avery Hankins 765-376-1796
www.prairiecrossranches.com



BK CMCC KOOL PROFIT K001ET {DLF,HYF,IEF,MSUDF,MDF}

P44405442

Calved: 2/26/22 - Tattoo: LE K001/RE CMCC

CE	BW	WW	YW	DMI	SC	SCF	MM	M&G	MCE
-0.8	4.7	64	114	0.2	0.7	5.8	34	66	-2.2
MCW	UDDR	TEAT	CW	FAT	REA	MARB	BMS	BIIS	CHBS
154	1.20	1.10	88	0.012	0.93	0.18	250	325	163

CHURCHILL PILGRIM 632D ET {SOD}{DLF,HYF,IEF,MSUDF,MDF,DBF}

H THE PROFIT 8426 ET {DLF,HYF,IEF,MSUDF,MDF,DBF}

P43916400 RST GAT NST Y79D LADY 54B ET {DLF,HYF,IEF,MSUDF,MDF,DBF}

CHAC MASON 2214 {DLF,HYF,IEF}

BK DISTINCTIVE POINTS 641D ET {DLF,HYF,IEF,MSUDF}

P43732012 HAPP KOOL AID POINTS 1218 ET {DLF,HYF,IEF,MDF,DBF}



SEMEN: 10 Straws for \$1,500; \$75/Certificate
Sexed female semen available

- One of the most talked about bulls in OKC this year where he was Reserve Champion Polled Hereford Bull.
- His dam, BK Distinctive Points 641D ET, needs no introduction as she has stamped out numerous national champions for Buck Cattle Co. Not to mention she is a direct daughter of the great HAPP Kool Aid Points cow.
- He is elite in his look and presence and will demand the attention of many when hitting the ring as well as when selecting sires for AI.
- This young sire's skeleton and build is phenomenal when wanting to make elite functional females and powerful herd bulls.
- Don't be missing out and let Kool Profit work for you!



2023 Cattlemen's Congress Champion Polled Junior Bull Calf

mf
McDonald Farm

Scott McDonald
7791 Eastern Ave. S.E.
Grand Rapids, MI 49508
616-446-2146
scott@mcdonaldplumbing.com

Gerald Green, Herdsman
517-819-7978
greenger@icloud.com



Jiri, Brenda and Bailey Buck
18478 Cattle Dr.
Madill, OK 73446
580-795-4865
jiri@buckcattle.com
www.buckcattle.com

MOORE CATTLE CO.
Ethan Moore
P.O. Box 26
Madill, OK 73446
580-795-4740
emoore@oklahomasteel.com



BAR STAR FRESH PRINCE 018 ET {CHB}{DLF,HYF,IEF,MSUDF,MDF,DBF}

P44163502

Calved: 2/26/20- Tattoo: BE 018

CE	BW	WW	YW	DMI	SC	SCF	MM	M&G	MCE
6.5	0.5	57	80	0.0	2.1	23.2	35	64	0.8
MCW	UDDR	TEAT	CW	FAT	REA	MARB	BMI\$	BIIS	CHBS
74	1.50	1.60	78	0.052	0.34	0.25	468	557	136

BAR S LHF 028 240 {SOD}{CHB}{DLF,HYF,IEF}

BR BELLE AIR 6011 {CHB}{DLF,HYF,IEF,MSUDF,DBF}

43724674

BR BELLE 4082 ET {DLF,HYF,IEF,MSUDF}

STAR STROKE OGENIUS 91X ET {DLF,HYF,IEF,DBP}

BAR STAR 91X WHATAGIRL 410 {DLF,HYF,IEF,MSUDF,MDF,DBF}

P43516611

MOHICAN WHATAGIRL 6Y {DLF,HYF,IEF}



SEMEN: \$125/Straw, 5 straw minimum; Non-certificate Sexed female semen available

- Fresh Prince has become the go-to sire for heifers!
- Calving ease and maternal traits are proving true in his first two calving seasons and yet he still gives them phenotype that works in the ring!
- Fresh Prince has proven in his first two calf crops the ability to sire extremely easy calving progeny across the country, the added quality he stamps into them adds value.
- Bar Star sold three heifer calf daughters to average \$16K as well as high sellers for McDonald Farms in the 2022 Breeders Cup sale and others across the country.

- He's a rare combination bull with a balanced genetic script that includes top 10% MARB and CHBS with the phenotype to produce big time herd bulls and show heifers at the same time.
- Recently, his first progeny was selected for a divisional champion in the bull show at the 2023 NWSS as well as a class winning heifer calf at the Fort Worth Stock Show.
- There's no reason to second guess your decision to breed with Fresh Prince this coming breeding season when you're adding value to your calf crop.



BAR STAR FRESH PRINCE 018 ET



Scott McDonald
7791 Eastern Ave. S.E.
Grand Rapids, MI 49508
616-446-2146
scott@mcdonaldplumbing.com

Gerald Green, Herdsman
517-819-7978
greenger@icloud.com



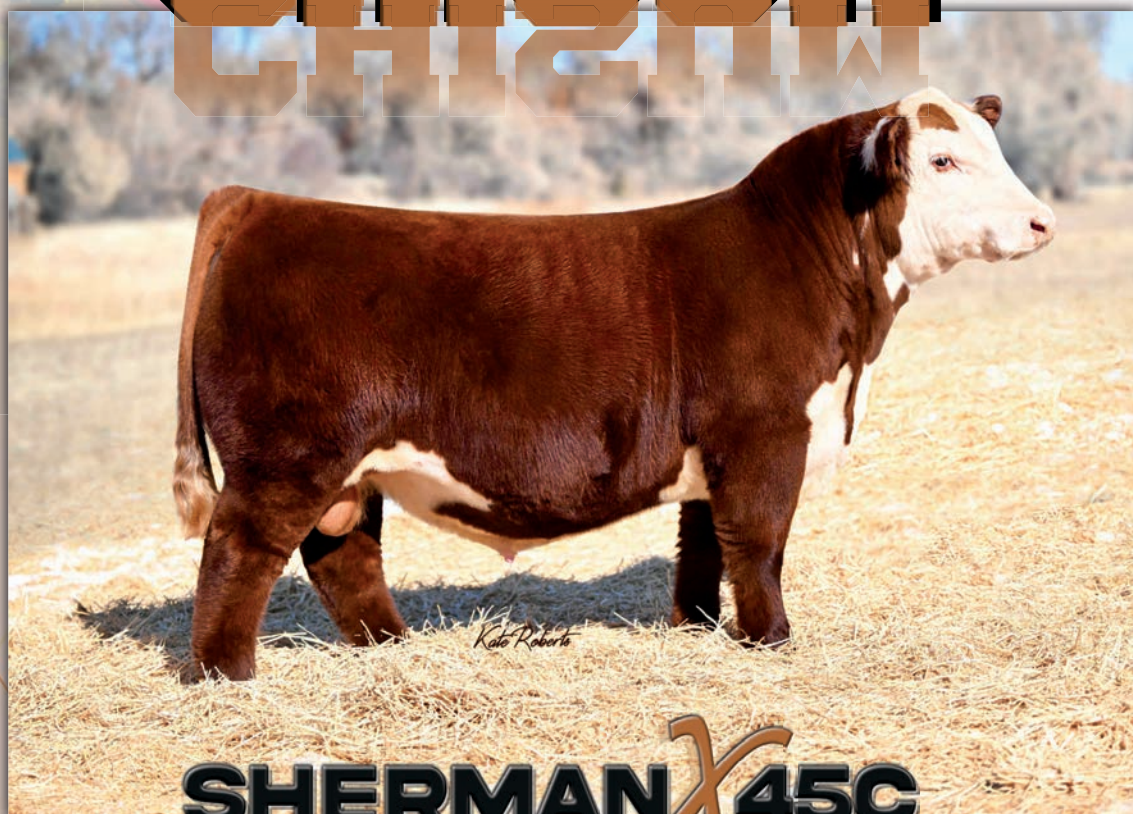
Chad and Stephanie Murnin
290 Jensen Rd.
Musselshell, MT 59059
Chad 406-399-7811
Stephanie 406-399-7815
barstarcattle@hotmail.com

SEMEN: 10 / STRAW FOR \$2500; NON-CERTIFICATE.
SEXED FEMALE SELLS AT AUCTION.
CONTACT CASEY OR SPENCER FOR U.S. SEMEN

CCCC

CHISUM

456M ET



SHERMAN X 45C

P44589720 | 3/9/2024 | HOMOZYGOUS POLLED

(DLF, HYF, IEF, MSUDF, MDF, DBF)

KCF BENNETT RESOLVE G595

JDH VICTOR 719T 33Z ET

CHURCHILL W4 SHERMAN 2157K ET

JDH AH MS 34X VICTOR 33Z 45C ET

CHURCHILL LADY 079H ET

AH JDH MS 25L WRANGLER 34X ET

CE	BW	WW	YW	DMI	SC	SCF	MM	M&G	MCE	MCW	UDDR	TEAT	CW	FAT	REA	MARB	BMI\$	BII\$	CHB\$
-1.8	4.6	81	125	0.5	1.3	19.1	29	69	-4.6	123	1.40	1.30	107	0.012	1.17	0.38	467	580	195



- THE MOST ANTICIPATED HEREFORD BULL IN THE YARDS AT THE NATIONAL WESTERN STOCK SHOW IN DENVER
- TOP 1% OF THE BREED FOR 5 TRAITS INCLUDING; WW, YW, CW, REA, & CHB
- CHISUM IS UNRIVALED IN HIS POTENTIAL TO COMBINE ASTONISHING PHENOTYPE AND INCREDIBLE GENOTYPE. DARK RED, RED EYED, AND RED TO THE GROUND! HIS DAM 45C, A MATERNAL POWERHOUSE & THE MOTHER OF HERD BULLS, DEMANDED \$87,500 WHEN THE HAMMER DROPPED. HIS SIRE, SHERMAN, A HIGH SELLER FOR CHURCHILL AT \$160,000 HAS BEEN USED IN VOLUME ALL ACROSS THE NATION!
- IT ISN'T OFTEN YOU GET THE MEAT, MUSCLE, LENGTH & THE LOOK ALONG WITH THE RIGHT EPD'S ON PAPER!



CASEY: 605-848-3338
SPENCER: 605-520-9087
WWW.CANECREEKCATTLECO.COM



DCF 864F GENERAL I46L ET {DLF,HYF,IEF,MSUDF}



P44564392

Calved: 10/17/23 - Tattoo: BE 146L



CE	BW	WW	YW	DMI
1.4	3.8	71	119	0.5
SC	SCF	MM	M&G	MCE
1.8	14.6	31	66	3.5
MCW	UDDR	TEAT	CW	FAT
104	1.20	1.10	99	0.072
REA	MARB	BMIS	BIIS	CHBS
1.03	0.42	385	490	185

SEMEN: \$35/Straw; \$75/Certificate

EFBEEF BR VALIDATED B413 {SOD}{CHB}{DLF,HYF,IEF,MSUDF,MDF,DBF}

SPEARHEAD 4 STAR GENERAL {CHB}{DLF,HYF,IEF,MSUDF,MDF}

P44015253 SPEARHEAD A246 DEARIE D1 {DLF,HYF,IEF,MSUDF,MDF,DBF}

/S JBB/AL BOOM TOWN 44608 {SOD}{CHB}{DLF,HYF,IEF,MSUDF,MDF,DBF}

/S LADY BOOM TOWN 864F ET {DLF,HYF,IEF,MSUDF,MDF,DBF}

P43953943 LOEWEN MISS ON TARGET 10Y 1A {DLF,HYF,IEF,MSUDF,DBP}

- Homozygous Polled
- BW: 64 lb.; Adj. YW: 1,177
- General has been a standout from birth with an eye-appealing phenotype with extra length of body and muscle shape.
- General is a unique combination herd sire, as he is in the top of the breed for Growth both WW and YW, as well as, top 5% of the breed for all carcass traits and top 1% SCHB.



Locke and Carter St. John
Pell City, AL
Carter 205-705-4041
Locke 615-427-8979
drycreekfarm01@gmail.com



Doug and Caroline Davison
Bryan and Tonya Massengale
Senoia, GA
Bryan 770-900-1669



Jeremy and Chere Carter
Lucedale, MS
Jeremy 251-232-7404

DCF I14J FORTUNE IL {DLF,HYF,IEF,MSUDF}



P44423653

Calved: 1/1/23 - Tattoo: BE 1L



CE	BW	WW	YW	DMI
2.2	3.0	74	125	0.7
SC	SCF	MM	M&G	MCE
1.9	18.8	32	69	2.6
MCW	UDDR	TEAT	CW	FAT
120	1.30	1.30	109	0.052
REA	MARB	BMIS	BIIS	CHBS
0.98	0.07	434	522	163

SEMEN: \$35/Straw; \$75/Certificate

SHF DAYBREAK Y02 D287 ET {CHB}{DLF,HYF,IEF,MSUDF}

SHF HOUSTON D287 H086 {CHB}{DLF,HYF,IEF,MSUDF,MDF,DBF}

P44123641 SHF MISS 14 20Z D223 {DLF,HYF,IEF,DBP}

LOEWEN GENESIS G16 ET {CHB}{DLF,HYF,IEF,MDF,DBF}

DCF 642Z GUIDANCE I14J ET {DLF,HYF,IEF,MSUDF}

P44233311 WHR RMB109 BEEFMAID 642Z {DLF,HYF,IEF,MSUDF}

- Act. BW 69 lb.; Act. YW 965 lb.; BW Ratio 96; WW Ratio 106
- Stout built and big footed son of SHF Houston out of a first calf heifer sired by Loewen Genesis. Fortune smashed the scales at weaning weighing 965 lb.



DCF 642Z GUIDANCE I14J ET
Dam



Locke and Carter St. John
Pell City, AL
Carter 205-705-4041
Locke 615-427-8979
drycreekfarm01@gmail.com



Jeremy and Chere Carter
Lucedale, MS
Jeremy 251-232-7404



H B DISTINCT {CHB}{DLF,HYF,IEF,MSUDF,MDF,DBF}

P44184682

Calved: 2/8/20 - Tattoo: BE 00049 - Homozygous Polled

CHURCHILL SENSATION 028X {SOD}{DLF,HYF,IEF,MDF,DBF}
NJW 160B 028X HISTORIC 81E ET {DLF,HYF,IEF,MSUDF,MDF,DBF}
 P43829334 NJW 73S 38W DAYDREAM 160B {DLF,HYF,IEF,MSUDF}

LCX PERFECTO 11B ET {DLF,HYF,IEF,MSUDF}
H DS MISS SPICE 8082 {DLF,HYF,IEF,MSUDF,MDF,DBF}
 P43915164 H BL MISS SPICE 613 ET {DLF,HYF,IEF,MSUDF}

CE	BW	WW	YW	DMI	SC	SCF	MM	M&G	MCE
10.6	0.3	70	103	0.1	1.5	21.8	36	71	5.2
7%	10%	7%	21%	28%	10%	14%	9%	5%	13%
MCW	UDDR	TEAT	CW	FAT	REA	MARB	BMI\$	BIIS	CHBS
106	1.80	2.00	89	0.032	1.06	0.24	484	579	163
82%	1%	1%	8%	59%	1%	23%	6%	6%	6%



SEMEN: \$50/Straw; with a 10 straw minimum; \$75/Certificate.
 Contact Dustin Layton for all semen orders and AI certificates.

— H B Distinct was the feature \$75,000 Lot 1 feature in the Huth Polled Herefords monumental dispersal this past fall. In the offering 113 direct progeny of H B Distinct grossed \$605,600.00 to average \$5,407.14 per sale.

— A combination Homozygous Polled bull that combines proven calving-ease, performance, big scrotal, maternal excellence and added muscle. He is easy-fleshing and stamps a highly desirable phenotype look onto his progeny. A trait leader in 14 traits and offers genetic diversity as he is an outcross to many of the mainstream AI bulls today.



Since 1987

Gary & Kathy Buchholz, owners
 Gary Buchholz 214-537-1285 • gary@gkbcattle.com
 Jay Creamer 254-707-2199 • jay@gkbcattle.com
 Raymond Gushee 207-256-7365 • ray@gkbcattle.com
 7440 TX 16, Desdemona, TX 76445
gkbcattle.com



LAYTON CATTLE CO.
 Dustin Layton 405-464-2455
laytond@yahoo.com
 P.O. Box 31684
 Edmond, OK 73003



RPC BH I43J 210 FIREBALL 410 {DLF,HYF,IEF,MSUDF,MDF,DBF}

P44587821

Calved: 3/1/24 - Tattoo: RE 410

CE	BW	WW	YW	DMI	SC	SCF	MM	M&G	MCE
5.7	2.9	78	122	0.8	1.3	16.9	45	84	0.8
MCW	UDDR	TEAT	CW	FAT	REA	MARB	BMS	BIIS	CHBS
128	1.20	1.30	95	0.062	1.02	0.14	397	492	145

BR ER BIG COUNTRY 007 ET {DLF,HYF,IEF,MSUDF,MDF}

RPC JCS 7119 007 RUBBLE 210 {DLF,HYF,IEF,MSUDF,MDF,DBF}

44376473

PCC NEW MEXICO LADY 7119 ET {DLF,HYF,IEF,MSUDF,MDF,DBF}

BG LCC 11B PERFECTO 84F {DLF,HYF,IEF,MSUDF,MDF,DBF}

/S LADY PERFECTO I43J {DLF,HYF,IEF,MSUDF}

P44273403

/S LADY BOOM TOWN 8193F ET {DLF,HYF,IEF,MSUDF}



SEMEN: \$50/Straw; \$100/Certificate

- Fireball is one of the most talked about calves to be campaigned this spring. With a commanding presence, exceptional structure, and the performance to back it up, he's garnered well-deserved attention in every ring he's entered. Curve-bending genetics paired with his striking phenotype is hard to create and he has all the cosmetics to go along with it.
- He's goggled-eyed, dark red, red to the ground, and measured a 37 cm scrotal at just 10 months of age.
- He led off the Reserve National Champion Pen of 3 in Oklahoma City, was Reserve Spring Calf at OKC and Fort Worth, and Champion Spring Calf in Denver. But Fireball is not just a show bull. He was created with the beef industry in mind. If you're serious about the cattle business, this is the bull that can do it in all facets.



23 William Ln.
Canyon, TX 79015
Drew Perez • 806-640-8340
Lauren Perez • 620-767-3390
drew@runningcattle.com
www.runningcattle.com



9101 East Stateline Rd.
Newkirk, OK 74647
Nancy 580-362-5026
Tim Stidham, manager
Tim 405-742-4552
nkbowling@yahoo.com
www.bowlingranch.com



FIVE JS MARLBORO MAN 392I ET {DLF,HYF,IEF,MSUDF,MDF,DBF}

P44548589

Calved: 3/28/23 - Tattoo: LE 392I

NJW 79Z Z311 ENDURE 173D ET {SOD}{CHB}{DLF,HYF,IEF,MSUDF,MDF,DBF}

LOEWEN GENESIS G16 ET {CHB}{DLF,HYF,IEF,MDF,DBF}

P43987463

LOEWEN 77 48 MISS 344N 4RB42ET {DLF,HYF,DBP}

NJW 73S W18 HOMETOWN 10Y ET {SOD}{CHB}{DLF,HYF,IEF,MSUDF,MDF}

GENOA MISS HOMETOWN 10Y 15047 {DLF,HYF,IEF,MSUDF,MDF}

P43585109

HYALITE TS LASS 547 {DLP,HYF}

CE	BW	WW	YW	DMI	SC	SCF	MM	M&G	MCE
2.6	3.3	63	108	0.3	1.8	21.9	31	63	1.1
MCW	UDDR	TEAT	CW	FAT	REA	MARB	BMS	BIS	CHBS
103	1.30	1.20	95	0.062	0.53	0.43	480	585	181



SEMEN: \$25/Straw; \$40/Certificate
Contact Reed Enterprises 660-527-3507

- Cherry red, from head to toe with plenty of pigment. Marlboro Man is a Genesis out of the nationally known Genoa Hometown 15047.
- He was the highest selling bull in the 2024 Southern Partners In Progress sale.



GENOA MISS HOMETOWN 10Y 15047
– Dam



Farm Manager, Will Standley, 984-480-9054
Herd Manager, Zack, 919-608-8882
84 Austin Farm Ln.
Clayton, NC 27520
Jody Standley 919-291-4212



PRICE LAND & CATTLE
Adam Price 704-960-2027
158 Hemlock Rd.
Cleveland, NC 27013

77 CHAOS



CE	BW	WW	YW	SC	MM	UDDR	TEAT	CW	REA	MARB	BMI	BII	CHB
+6.4	+1.9	+72	+119	+11	+29	+1.40	+1.50	+106	+0.82	+0.61	+488	+612	+216
TOP 5%	TOP 5%	TOP 3%	TOP 1%	TOP 1%	TOP 1%	TOP 4%	TOP 1%	TOP 5%	TOP 1%	TOP 5%	TOP 3%	TOP 1%	TOP 1%



77 CHAOS 12H K41 ET
P44368156 • 03/13/2023

HOMOZYGOUS POLLED
DAM: BF 4013 POSH 12 ET
SIRE: JDH AH BENTON 8G ET

SEMEN: \$50 A
STRAW
(10 STRAW
MIN).
\$75 CERTS.

CHAOS IS ONE OF THE MOST NUMBERED UP BULLS IN THE COUNTRY. THIS BULL COULD CHANGE THE BREED. HE HAS 10 EPD'S IN THE TOP 10%, 11 EPDS IN THE TOP 12%, AND 7 EPD'S IN THE TOP 5%. HIS NUMBERS SPEAK FOR THEMSELVES. HE'S GOT A LOT OF HIP, BODY, THICKNESS, AND EYE APPEAL. ITS'S HARD TO SEE BUT HE IS 100% PIGMENTED IN ONE EYE AND ABOUT 90% IN THE OTHER. THEN, YOU ADD IN THAT HE'S OUT OF ONE OF THE TOP COWS IN THE COUNTRY AND YOU CAN SEE WHY HE'S SO EXCITING!



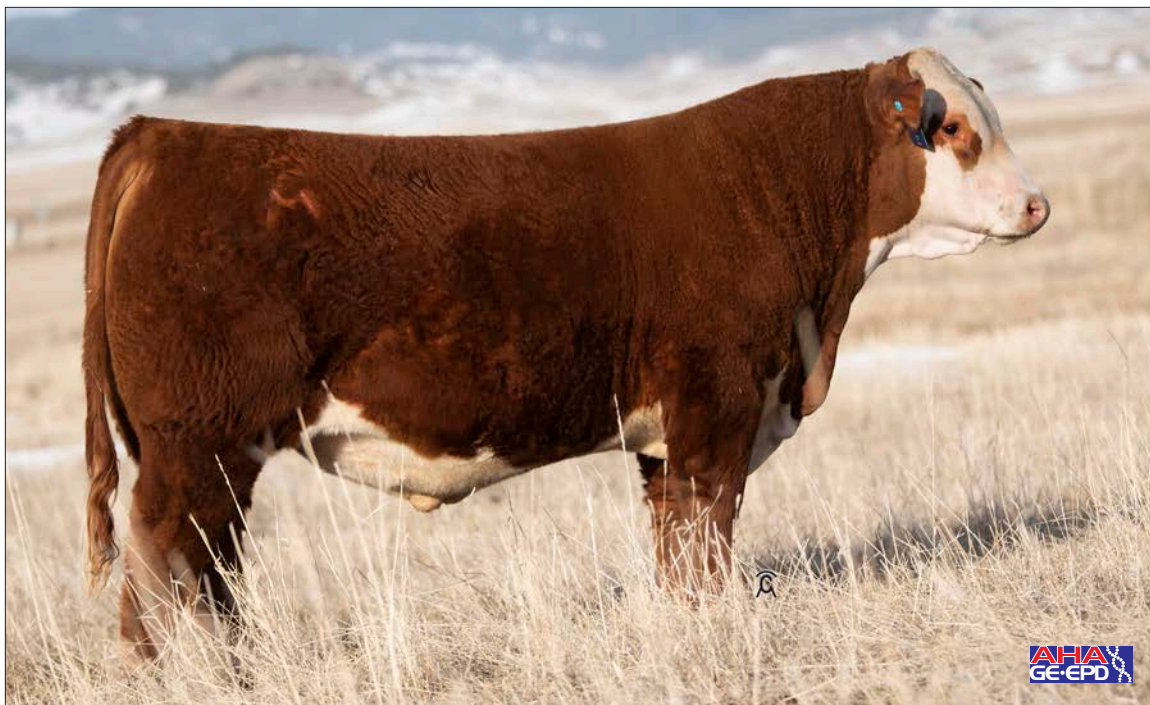
DAM: BF 4013 POSH 12 ET



DOUBLE SEVEN RANCH
Reggie & Amber Willits family
10191 CR 1260
Fort Cobb, OK 73038
(405) 306-7443
info@doublesevenranch.com
www.doublesevenranch.com



HEYEN FARMS
Wayne & Jacqui Heyen
2268 Coop Rd
Medora, IL 62063
hynfarms@gmail.com
(618) 535-9945



CSC 004 HOOTENANNY 206 {DLF,HYF,IEF,MSUDF,MDF,DBF}

P44364991

Calved: 3/1/22 - Tattoo: BE 206

/S MANDATE 66589 ET {DLF,HYF,IEF,MSUDF,MDF,DBF}

NJW 79Z 6589 REVOLVE 165G ET {DLF,HYF,IEF,MSUDF,MDF}

P44057393 BW 91H 100W RITA 79Z ET {DLF,HYF,IEF,MSUDF,MDF}

KT GOLD CREEK 6209 {DLF,HYF,IEF,MSUDF}

CSC 701 LADY DEW 004 {DLF,HYF,IEF,MSUDF}

44148295 CSC 502 LADY DEW 701 {DLF,HYF,IEF,MSUDF,MDF}

CE	BW	WW	YW	DMI	SC	SCF	MM	M&G	MCE
9.0	0.4	66	106	0.4	2.2	26.4	45	77	4.4
MCW	UDDR	TEAT	CW	FAT	REA	MARB	BMI\$	BIIS	CHBS
117	1.50	1.50	64	0.012	0.35	0.02	495	578	102



SEMEN: \$50/Straw; \$50/Certificate

- He's long, he's attractive, he's got BIG SPREAD.
- Hootenanny flawlessly combines calving ease, performance, and matrilineal power in an exceptionally eye appealing package. He's always had a look we love and we believe he will make females everyone will want a pasture full of and herd bulls that'll make your jaw drop.
- Dam, CSC 004, is a powerful and eye catching, maternal sister to CSC 701 Bolder 901; who's done a phenomenal job for us and is quickly becoming a popular international Semex sire. Grandam, CSC 701, tops the charts in the Canadian Maternal Productivity Index; a measure of maternal traits that are important to profitability.
- The top side of his pedigree contains more well-rounded maternal producers from the NJW program, BW 91H 100W Rita 79Z and NJW P606 72N Daydream 73S. It's a program and cow herd we know well, stretching back to the days of 72N herself, and genetics we use with confidence.
- Combining the strength of the bottom side of his pedigree with the top side, gives him monster wealth of proven, steadfast maternal genetics and he packs a punch in the performance department too!
- Hootenanny traces back to the same cow line as CSC 701 Oshoto 316 and CSC 701 Boulder 901.



PELTON POLLED HEREFORDS

Craig Pelton
40 934d Ave. N.W.
Halliday, ND 58636
701-260-0058
craigp@ndsupernet.com



Cody and Shawna Chabot
1174 Douglas Rd.
Sundance, WY 82729
307-281-2367

BK JET SMOOTH J18 ET
#44372193 {DLF,HYF,IEF,MSUDF,MDF}

JDH AH STANDOUT 16G ET
HAPP KOOL AID POINTS 1218

JDH 11B STUD 3134 63E
JDH AH MS 34X VICTOR 33Z45C
DELHAWK KAHUNA 1009 ET
CRANE STYLE POINTS 945

CE	-0.6	SC	1.4	MCW	91	REA	1.06
BW	3.9	SCF	19.9	UDDR	1.30	MARB	0.08
WW	65	MM	26	TEAT	1.30	BMI	434
YW	108	MG	59	CW	95	BII	513
DMI	0.6	MCE	0.7	FAT	0.012	CHB	146

Owned with Ella Weldon & 6 Mile Creek

Semen \$100/ unit; certificates \$75/ each

2024 Cattlemen's Congress Grand Champion Polled Bull & 2024 Fort Worth Stock Show Reserve Grand Champion Bull



TCW RENO 81E 201K {DLF,HYF,IEF,MSUDF,MDF,DBF}
#44394541

NJW 160B 028X HISTORIC 81E

CHURCHILL SENSATION 028X
NJW 73S 38W DAYDREAM 160B
NJW 73S W18 HOMETOWN 10Y ET
TCW CALL GIRL 187Z 505C

TCW CALL GIRL 10Y 807F

CE	4.7	SC	1.1	MCW	103	REA	0.86
BW	1.0	SCF	26.3	UDDR	1.30	MARB	0.11
WW	68	MM	40	TEAT	1.50	BMI	518
YW	106	MG	74	CW	90	BII	608
DMI	0.8	MCE	0.4	FAT	0.052	CHB	132

Semen \$50/ unit. Non Certificate sire

'23 Western Nugget Reserve Grand Champion Horned Bull

Heifer Safe!



BK RED RIVER H18 ET {DLF,HYF,IEF,MSUDF,MDF,DBF}
#44249335

H THE PROFIT 842E ET

CHURCHILL PILGRIM 632D ET
RST GAT NST Y79D LADY 54B ET
DELHAWK KAHUNA 1009 ET
CRANE STYLE POINTS 945

HAPP KOOL AID POINTS 1218

CE	-2.8	SC	0.9	MCW	89	REA	0.70
BW	4.9	SCF	15.7	UDDR	1.30	MARB	0.14
WW	62	MM	25	TEAT	1.30	BMI	354
YW	108	MG	56	CW	77	BII	432
DMI	0.5	MCE	89	FAT	0.002	CHB	131

Semen \$100/ unit; certificates \$75/ each

Owned with Bar A Cattle



JIRL, BRENDA & BAILEY BUCK

580.795.4865 mobile | jirl@buckcattle.com | www.buckcattle.com | Madill, OK 73446
Matt Scasta, 580.220.7288 | Davey Young, 931.478.0527 | Diego Dow, 505.450.6767

SPRING EDITION SALE, March 29th • FALL PREMIER SALE, October 18th • BULLS FOR SALE AT PRIVATE TREATY



HH ADVANCE 2116K {DLF,HYF,IEF,MSUDF,MDF}

44346768

Calved: 1/13/22 - Tattoo: BE 2116



HH ADVANCE 7143E ET {DLF,HYF,IEF,MSUDF}
HH ADVANCE 0022H ET {CHB}{DLF,HYF,IEF,MSUDF,MDF}
 44128602 HH MISS ADVANCE 4287B ET {DLF,HYF,IEF}

CL 1 DOMINO 744E {DLF,HYF,IEF,MSUDF}
HH MISS ADVANCE 000IH {DLF,HYF,IEF,MSUDF}
 44128581 HH MISS ADVANCE 8006F {DLF,HYF,IEF}

CE	BW	WW	YW	DMI	SC	SCF	MM	M&G	MCE
14.5	-2.7	63	90	0.7	1.4	16.3	34	65	7.4
MCW	UDDR	TEAT	CW	FAT	REA	MARB	BMIS	BIIS	CHBS
35	1.20	1.30	82	0.032	0.34	0.56	367	477	160



SEMEN: \$50/Straw; \$75/Certificate
 Volume discounts available

- UNIQUE and UNMATCHED, 2116K is the only horned sire in the breed with his combination of CED, BW, YW, MARB and CHBS. He sold for \$100,000 in Holden's 2023 sale.
- He ranks in the Top 2% of the breed on CED, BW, MCW and MARB. The Top 6% on CHBS, and the Top 15% on SC and MM EPDs.
- He sires moderate framed, easy fleshing progeny with extra pigment, rib shape, muscle, and eye appeal. Calves are extremely vigorous at birth and very well made.
- His dam is a very moderate framed cow with exceptional capacity and fleshing ability. She is a top donor in their program and has a huge future ahead of her at only 5 years of age.
- Here is a bull that will sire progeny that will excel in the pasture, feedlot, and on the rail, and daughters that are functional, fertile, easy fleshing, and highly productive.



Maternal Brother to 2116K

Holden Herefords

3139 Valier Dupuyer Rd.
 Valier, MT 59486

www.holdenherefords.com
 jtholden@3rivers.net

Home 406-279-3301
 Jack's cell 406-450-1029
 Brad Holden cell 406-590-3307
 Jay D Evans 406-450-0129
 Eric Lawver 406-600-3118

2116 GROUP:

Double J Herefords, KS
 EF1 Cattle Co., ND
 Harrison Cattle Co., OK
 Sierra Ranches, CA
 Jones Ranch, TX

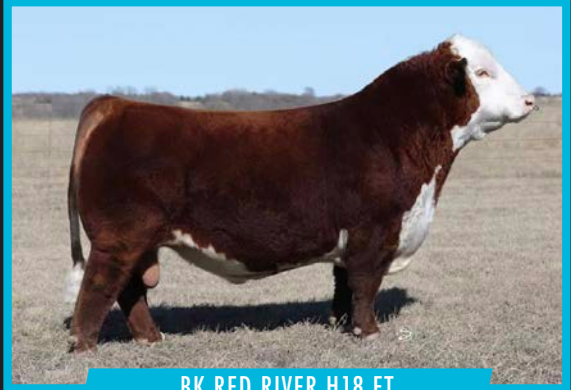


genesource

WWW.THEGENESOURCE.COM



BACC 747 FUNDAMENTAL 114



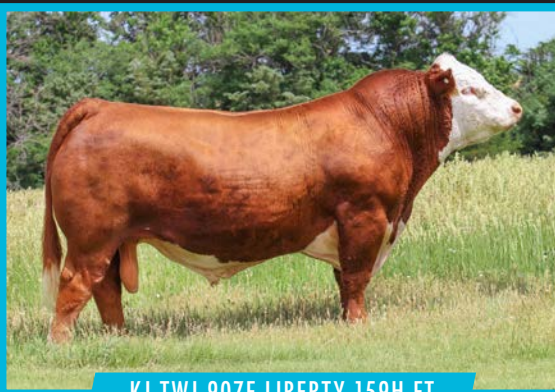
BK RED RIVER H18 ET



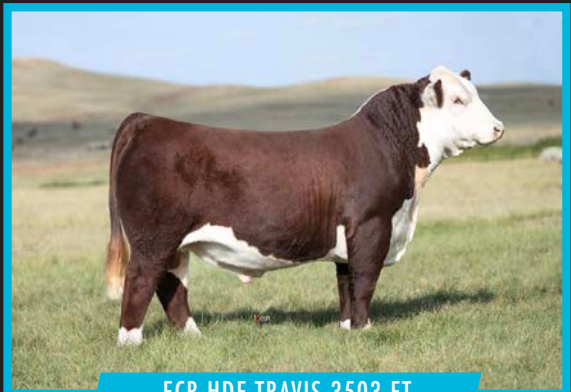
BK JET SMOOTH J18



T/R BPF AMERICAN CLASSIC 561C ET



KJ TWJ 907E LIBERTY 159H ET



ECR HDF TRAVIS 3503 ET

14382 FM 103 NOCONA, TX 76255

TYLER ALLAN 979-743-1512 | DAVE ALLAN 979-561-7115 | BECKY ALLAN 512-750-8367



RST FINAL PRINT 0016 {CHB}{DLF,HYF,IEF,MSUDF,MDF}

P44178105

Calved: 2/4/20 - Tattoo: LE 0016

CE	BW	WW	YW	DMI	SC	SCF	MM	M&G	MCE
6.1	-0.4	83	127	0.1	1.1	22.3	40	82	0.7
MCW	UDDR	TEAT	CW	FAT	REA	MARB	BMI\$	BIIS	CHBS
82	1.70	1.70	95	0.062	0.77	0.20	487	596	165

R LEADER 6964 {SOD}{DLF,HYF,IEF,MSUDF,DBF}

BOYD 31Z BLUEPRINT 6153 {DLF,HYF,IEF,MSUDF,MDF,DBF}

P43764491

NJW 91H 100W RITA 31Z ET {DLF,HYF,IEF}

EFBEEF TFL U208 TESTED X651 ET {SOD}{CHB}{DLF,HYF,IEF,MSUDF}

RST MS X651 TESTED 8032 {DLF,HYF,IEF,MSUDF,MDF,DBF}

P43954174

RST MS 0124 TIMESAWASTIN 6094 {DLF,HYF,IEF,MSUDF}



SEMEN: \$50/Straw; \$75/Certificate

Contact Pete Atkins 605-351-9847

- Final Print sons and daughters are topping sales across the country
- Light birth weights, calving ease and outstanding growth with feed efficiency
- Daughters with high quality udders and excellent milk flow
- He is pigmented and freckle faced and passing that along
- Use him on cows and heifers to add value and eye appeal



Final Print daughter



Pete and Laura Atkins
27132 SD Hwy. 17 • Tea, SD 57064
605-351-9847 cell
petea15@gmail.com
www.atkinsherefords.com



Boyd Dvorak 605-491-7090
Jeff Dvorak 605-491-2068
dvorakboyd@yahoo.com
www.dvorakherefords.com



Bruce Thomas 406-544-1536
Gold Creek, MT
bruce@thomasherefords.com
www.thomasherefords.com



Shelly McQuaig



PR2 B279 593F AVIATOR 44L ET {DLF,HYF,IEF,MSUDF,MDF,DBF}

P44443813

Calved: 3/23/23 - Tattoo: LE 44L/RE PR2

NJW 73S M326 TRUST 100W ET {SOD}{CHB}{DLF,HYF,IEF,MSUDF,MDF,DBF}

KCF BENNETT TRUST B279 ET {CHB}{DLF,HYF,IEF,MDF,DBC}

P43552488 KCF MISS REVOLUTION X374 {DLF,HYF,IEF,DBP}

WHITEHAWK WARRIOR 845C ET {SOD}{CHB}{DLF,HYF,IEF,MSUDF,MDF}

WHR 845C 4010 BEEFMAID 593F ET {DLF,HYF,IEF,MSUDF}

43889872 INNISFAIL 723 U208 4010 ET {DLF,HYF,IEF,MSUDF}

CE	BW	WW	YW	DMI	SC	SCF	MM	M&G	MCE
9.2	0.2	74	117	0.1	0.7	19.8	27	64	4.1
10%	9%	4%	5%	24%	82%	28%	57%	20%	22%
MCW	UDDR	TEAT	CW	FAT	REA	MARB	BMI\$	BIIS	CHBS
109	1.50	1.40	106	0.042	1.01	0.66	496	622	230
86%	2%	13%	1%	74%	1%	1%	4%	2%	1%



SEMEN: \$50/Straw; \$100/Certificate

- Fly your program to new heights!
- Aviator is a rare calving-ease sire with growth and carcass merit as he's the only animal in the breed with his combination of BW, WW and CHB.
- Red eyed and 100% pigmented with a dark red, slick hide.
- Act. BW 69 lb., Adj. WW 730 lb. and Adj. YW 1,226 lb.
- Measured an actual ribeye of 17.2 at 388 days of age
- Don't overlook his maternal value with a top 4% BMI, top 2% BIIS and top 2% UDDR
- Backed by a powerful dam with a proven track record of producing herd bulls
- Free of all known defects



**WHR 845C 4010
BEEFMAID 593F ET**

- Dam



Colton and Jessi Pollard
Bowdon, GA 30108
678-836-4746
pleasantridgeranch@outlook.com



Roy and Marle Barnes, owners
Shelly Patton-McQuaig, marketing
229-402-7232
office@barnesherfords.org

Jack Frost

A Superstar In The Making!



CHURCHILL **Jack Frost 458M** ET {DLF,HVF,IEF,MSUDF,MDF,DBF}

P44567107 CALVED: 1/11/24 • TATTOO: LE 458



KCF BENNETT RESOLVE 6595 {CHB} {DLF,HVF,IEF,MSUDF,MDF,DBC}

KCF BENNETT TRUST B279 ET {CHB} {DLF,HVF,IEF,MDF,DBC}

CHURCHILL W4 SHERMAN 2157K ET {DLF,HVF,IEF,MSUDF,MDF,DBF}

KCF MISS TESTED C422 {DDB} {DLF,HVF,IEF,MSUDF}

P44378036 CHURCHILL LADY 079H ET {DLF,HVF,IEF,MSUDF,MDF,DBF}

EXR BANKROLL 8130 ET {DLF,HVF,IEF,MDF,DBF}

CHURCHILL LADY 7189E ET {DLF,HVF,IEF,MSUDF,MDF,DBF}



EFBEEF BR VALIDATED B413 {SOD} {CHB} {DLF,HVF,IEF,MSUDF,MDF,DBF}

EFBEEF TFL U208 TESTED X651 ET {SOD} {CHB} {DLF,HVF,IEF,MSUDF}

BR VALIDATED B413 6035 7098 {DLF,HVF,IEF,MDF,DBF}

EFBEEF 4R THYRA Y865 {DLF,HVF,IEF,MDF,DBC}

P43857421 BR BENNETT 4R Y428 2101 6035 {HVP,DBP}

KCF BENNETT REVOLUTION Y428 {DLF,HVF,IEF,DBP}

BR BENNETT OF 4070 2101 {HVP}

CE	BW	WW	YW	DMI	SC
6.8	-0.4	64	95	0.6	1.4
SCF	MM	MG6	MCE	MCW	
26.5	32	64	7.6	68	
UDDR	TEAT	CW	FAT	REA	MARB
1.50	1.50	93	0.073	1.01	0.72
BMS	BHS	CHS			
560	685	197			

SEMEN: \$100/Straw; \$100/Certificate
Call on special pricing for 20 or more straws.
Canadian and sexed semen available.



Mark and Della Ehle
Lacey Jepson, Jane'a Merkel
P.O. Box 1487, Townsend, MT 59644
Ranch 406-266-4121
Mark 406-439-4311 • Della 406-439-4300
Lacey 406-439-1544 • Jane'a 406-202-2766
info@ehlkeherefords.com
www.ehlkeherefords.com

- Top 6% BW; Top 2% SCF; Top 3% MCE; Top 2% UDDR; Top 4% TEAT; Top 3% CWT; Top 1% REA; Top 1% MARB; Top 1% BMS; Top 1% BII; Top 1% CHB
- He only has one flaw - his short ears due to extremely cold weather at birth, hence his name Jack Frost. Powerful, well balanced, attractive, easy fleshing, and great structured. His dam is the super cow, 7098. Jack Frost reminds us so much of his maternal brother, New Standard, but with even more eye appeal. His numbers indicate calving ease with incredible maternal values including udder quality. His carcass is as good as it gets with top 1% RE & Marb. Bulls this good are very rare!



2515 250th St., Cadott, WI 54727
Josh 715-313-0075 • Amy 715-313-0076
spaethherefords@gmail.com
www.spaethfarms.com



The Bielema Family
greatlakesherefordbeef@gmail.com
grandmeadowsfarm.com
616-292-7474



1862 Yadon Rd. • Manhattan, MT 59741
Office 406-284-6421 • Dale 406-580-6421
churchillcattle@gmail.com
www.churchillcattle.com



Shane Bedwell is the chief operating officer and director of breed improvement of the American Hereford Association. He can be reached at sbedwell@hereford.org

All bulls in the 2025 AI Book have been AI permitted and are ready for your assessment. The offering of this line-up is tremendous and you will find many young and proven bulls with genetics to move your operation forward. Bulls that have a highlighted expected progeny difference box are recognized by American Hereford Association (AHA) as trait leaders as they are proven sires that have achieved not only a minimum level of weaning weight accuracy but the trait that is highlighted is one standard deviation above the mean of the breed.

HEREFORD AI SIRE INDEX

111F Next Level ET	20
1HP00861 Bar JZ On Demand	68

A

ASM 405B Red Man 325L ET	15
AW Statesman 038H	8

B

Bar JZ On Demand	68
Bar Star Fresh Prince 018 ET	49
Birdwell Bullnanza 7098 0552ET	68
Birdwell Dynamic 5002 1673 ET	68
Birdwell New Standard 2912 ET	17
Birdwell Pivotal 7098 2553 ET	67
Birdwell Vanguard 5022 9337	68
Birdwell Wall Street 0588ET	11
BK CMCC Kool Profit K001ET	48
BK Jet Smooth J18 ET	57
BK Red River H18 ET	57

C

C&L RR KJ 364C Jalapeno 973E	9
CCCC Chisum 456M ET	50
Churchill BR 5JNationwide 179J	27
Churchill Equity 3316L ET	12
Churchill Jack Frost 458M ET.....	62
Churchill Smokey 3128L ET	34
Churchill Stanfield 3122L	36
Churchill W4 Sherman 2157K ET	35
CL 1 Domino 0186H	32
CMF 1720 Gold Rush 569G ET	20
CRR 156J Wind River 347	30
CRR 66589 Balance 107	29
CSC 004 Hootenanny 206	56
CSR 73D Valentino B413 40H	41

D

DCF 114J Fortune 1L	51
DCF 864F General 146L ET	51

HEREFORD AI SIRE INDEX

E

EF MF Longest Yard 19Z 228J ET	10
EFBEEF BR Validated B413	67

F

Five Js Marlboro Man 3921 ET	54
------------------------------	----

G

GG MCF Verified Merit 323L	43
----------------------------	----

H

HB Distinct	52
HH Advance 2116K	58
HH Advance 3107L ET	33
Huth LHF Badger K021	5

I

Innisfail WS Sustain 27L	45
--------------------------	----

J

JDH MRD 54E 8G Benton 35K ET	23
JW 1857 Merit 21134	14

K

KCF Bennett Dominion K510	7
KCF Bennett Eagle H550	7
KCF Bennett Monument J338	6
KRM 9160 Follow Me 8G L35 ET	26

L

Land Lincoln 3029 ET	31
LJS Mark Domino 2112	44
LJS Mark Domino 2213	24
Loewen Sandhill L70 ET	4

M

MKS 0016 99J Final Chance 02L	28
Mohican Company Man 51J	46
Mohican Dow Jones 65J	23
MPH 2103 Eastwood G3 ET	22
MPH Z311 Rampage D1	22

N

NJW 119E 87G Endorsement 2165	21
NJW 133A 6589 Manifest 87G ET	19
NJW 247C 41E Soul 173K	18
NJW 281F 168C Tuff 10H	16
NJW 51G 87G Man Up 255K	25
NJW 79Z 029H Vista 147L ET	18

P

Perks PRCC 0039 Ghostwood 3016	47
PR2 B279 593F Aviator 44L ET	61

R

RPC BH 143J 210 Fireball 410	53
RST Final Print 0016	60
RST 5051 Small Town Kid 9023	21

S

77 Chaos 12H K41 ET	55
7HP125 CMF 1720 Gold Rush 569G ET	20
7HP130 NJW 119E 87G Endorsement 216J	21
7HP132 RST 5051 Small Town Kid 9023	21
7HP134 111F Next Level ET	20
SHF Headstrong D287 H315 ET	6
SHF Lego 569G L347 ET	3
SHF Manhattan H315 M159	2
SHF Maverick 2912 M124 ET	2
Stellpflug Gunsmoke 222 ET	13

T

TCW Reno 81E 201K	57
THF Milford 21J	42
THF Toby 3H	42

W

Walker Full Circle 3511ET	37
WLKER JH Maximum 9244 3110L ET	38
WLKR JH Incentive 799E 0423 ET	39

HEREFORD ADVERTISERS INDEX

A		H	
Ade Polled Herefords	35	Harrison Cattle Co.	58
ANL Polled Herefords	46	Haroldson Polled Herefords	46
AKD Herefords	28	Heyen Farms	55
Ashewood Farm	8	HME Herefords	29
Atkins Herefords	60	Hoffman Ranch	36
B		Holden Herefords	33, 58
Bar JM Farm	50	Huth Polled Herefords	5
Bar Star Cattle Co.	49	I	
Beery's Land Livestock	36	Innisfail Farm	45
Behrends Farms	67	J	
Bigelow Livestock Management	12	Jennings Land and Cattle	34
Bill King Ranch	35	Jones Ranch	58
Birdwell Ranch	11, 17, 67, 68	Journagan Ranch/Missouri State Univ.	8, 9
Bixler Herefords	32, 33	K	
Bowling Ranch	53	Krebs Ranch	36
Brumley Farms	13	Knoll Crest	6, 7
Buck Cattle Co.	48, 57	L	
C		Largent and Sons	36
Cane Creek Cattle Co.	35, 50	Larson Hereford Farms	5
Cardinal Creek Cattle Co.	38	Layton Cattle Co.	52
Chapman Land & Cattle	19	Loehr, Paul	36
Churchill Cattle Co.	32, 33, 34, 35, 36, 62	Loewen Herefords	4
Clifford Farms	23	M	
Colyer Herefords	35	Makers Cattle Co.	28
Cooper Hereford Ranch	32	Matheny Herefords	15
Coyote Ridge Ranch	29, 30	McCaskill Farms	43
CSC Livestock	56	McDonald Farm	10, 48, 49
D		McGuffee Herefords	26, 27
Delaney Herefords	23	McKellar, Walt (CMR)	43
Double 7 Ranch	55	Medonte Highlands Polled Herefords	50
Double J Herefords	58	Mettler Polled Herefords	22
Dry Creek Farms	12, 51	MGM Polled Herefords	68
Dvorak Herefords	60	Moore Cattle Co.	48
E		Morris Hereford Farm	39
EF1 Cattle Co.	58	N	
Ehlke Herefords	23, 62	NJW Polled Herefords	16, 17, 18, 19
Eichler Livestock	46	O	
Ellis Farms	67	O'Hara Family Herefords	10
Everhart Herefords	10	O'Reilly Polled Herefords	3
F		P	
Five J's Cattle Co.	27, 54	Pelton Polled Herefords	56
Flat Creek Farm	51	Pérez Cattle Co.	4, 26
Friedt Herefords	31	Perks Ranch	47
G		Pied Piper Farms	36
Genesource	59	Pleasant Ridge Ranch/Barnes Herefords	61
Genex Corp.	66, 68	Prairie Cross Ranches	47
GKB Cattle	52	Price Land & Cattle	54
Grand Meadows Farm	62		
Greives Herefords	43		

HEREFORD ADVERTISERS INDEX

R

Rausch Herefords 18, 35
 Reed Enterprises 40
 Reed Farms 9, 41
 Reed Stock Farm 24
 Rees Bros. 25
 Reynolds Herefords 9
 Roots & Wings Farms 50
 Running P Cattle Co. 53

S

7 Oaks Plantation & Cattle Co. 51
 S&H Livestock Enterprises, LLC 5
 Sandhill Farms 2, 3, 4
 Schafer Herefords 44
 Select Sires 20, 21
 Shaw Cattle Co. 11
 Shockley Ranch 12
 Sierra Ranches 58
 Skrivanek Ranches 39
 Slaytons' Bear Dance 68
 Spaeth Farms 62
 Springhill Herefords 11
 Stephenson Herefords 36
 Stellflug Cattle 36

Steve Wolff Polled Herefords 23
 Stillahn, Gene 35, 36
 Storey Herefords 35
 Stuber Ranch 36

T

Tennessee River Music 14, 15
 The Berrys 35
 Thomas Herefords 60
 Topp Herefords 35
 Twin Hills Farms 42

U

Upstream Ranch 36

W

W4 Ranch 35, 36
 Waggoner Cattle Co. 14
 Walker Herefords 37, 38, 39
 Whispering Winds Farm 37
 Wiese & Sons 45
 WMC Cattle Co. 43

X

XA Cattle 35

THE TRUSTED TEAM

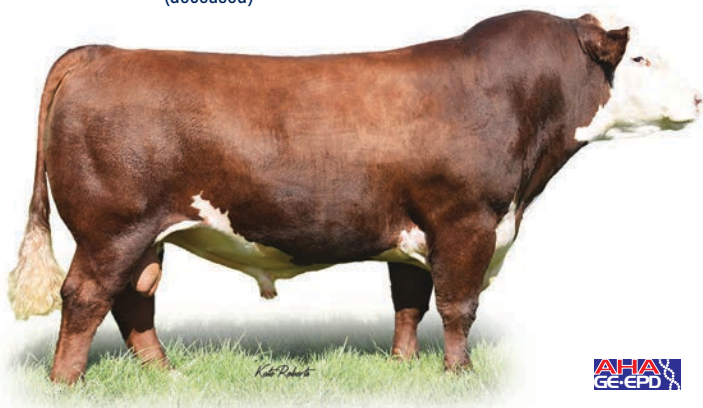
FOR MARKETING AND SOURCING HEREFORD GENETICS.

SEEDSTOCK MARKETING KANE AEGERTER KAEBERTER@HEREFORD.ORG	WESTERN REGION EMILEE HOLT EHOLT@HEREFORD.ORG	MOUNTAIN REGION KEVIN MURNIN KMURNIN@HEREFORD.ORG	NORTH CENTRAL REGION AARON FRIEDT AFRIEDT@HEREFORD.ORG	UPPER MIDWEST REGION CORBIN COWLES COWLES@HEREFORD.ORG	SOUTHWEST REGION CORD WEINHEIMER CWEINHEIMER@HEREFORD.ORG	EASTERN REGION TOMMY COLEY TCOLEY@HEREFORD.ORG
---	--	--	---	---	--	---

FOR MORE INFORMATION ABOUT HOW **OUR TEAM CAN HELP YOU SUCCEED**, VISIT [HEREFORD.ORG](https://www.hereford.org)

EFBEEF BR VALIDATED B413 {SOD}{CHB}{DLF,HYF,IEF,MSUDF,MDF,DBF}

(deceased)



P43558667

Calved: 2/21/14 - Tattoo: LE B413/RE PEF



CE	BW	WW	YW	DMI
1.8/66%	1.5/25%	64/21%	96/37%	0.5/77%
SC	SCF	MM	M&G	MCE
1.1/42%	27.8/1%	34/14%	66/13%	5.2/13%
MCW	UDDR	TEAT	CW	FAT
74/22%	1.40/9%	1.30/32%	69/64%	0.032/59%
REA	MARB	BMI\$	BI\$	CHBS
0.99/1%	1.24/0%	593/1%	751/1%	223/1%

SEMEN: \$60/Straw, 10 straw minimum; \$40/Certificate. Contact Birdwell Ranch for semen

EFBEEF FOREMOST U208 {SOD}{CHB}{DLF,HYF,IEF,MSUDF}
EFBEEF TFL U208 TESTED X651 ET {SOD}{CHB}{DLF,HYF,IEF,MSUDF}
 P43091736 EFBEEF P606 MABEL R415

MSU TCF REVOLUTION 4R {SOD}{DLF,HYF,IEF,MDF,DBC}
EFBEEF 4R THYRA Y865 {DLF,HYF,IEF,MDF,DBC}
 P43187517 EFBEEF N014 THYRA S645 {DOD}{DLF,HYF,IEF}

- HOMOZYGOUS POLLED!
- Pigmented and traditionally marked progeny with in demand color.
- Validated is iconic for angular, feminine, pretty uddered, problem free, productive daughters. The hallmark of a long term in-demand sire.
- He gives up nothing in any measured trait and blows the doors off on the traits of extra commercial value.
- Validated continues to reinforce his results driven breed superiority by being one of the highly used most important sires of the breed.
- Validated is the most unique sire in the AHA database for the ability to improve yield grade on the rail and still make easier fleshing daughters.
- Owned with Ellis Farms and Genex.



Fletcher, OK
 Jim Birdwell 580-695-2352
 Joel Birdwell 405-368-1058



BIRDWELL PIVOTAL 7098 2553 ET {DLF,HYF,IEF,MSUDF}

P44421192

Calved: 10/3/22 - Tattoo: BE 2553



CE	BW	WW	YW	DMI
7.7/18%	0.9/16%	69/9%	97/32%	0.5/81%
SC	SCF	MM	M&G	MCE
1.2/32%	31.3/1%	33/18%	67/10%	2.7/37%
MCW	UDDR	TEAT	CW	FAT
72/12%	1.50/2%	1.50/4%	91/5%	0.062/91%
REA	MARB	BMI\$	BI\$	CHBS
1.11/1%	0.83/1%	640/1%	779/1%	207/1%

SEMEN: \$50/Straw, 10 straw minimum; \$100/Certificate. Contact Behrends Farms for semen

NJW 792 Z311 ENDURE 173D ET {SOD}{CHB}{DLF,HYF,IEF,MSUDF,MDF,DBF}
CMF 1720 GOLD RUSH 569C ET {CHB}{DLF,HYF,IEF,MSUDF,MDF,DBF}
 P44108010 L III TFL C609 VICTORIA 1720 {DLF,HYF,IEF,MSUDF}

EFBEEF BR VALIDATED B413 {SOD}{CHB}{DLF,HYF,IEF,MSUDF,MDF,DBF}
BR VALIDATED B413 6035 7098 {DLF,HYF,IEF,MDF,DBF}
 P43857421 BR BENNETT 4R Y428 2101 6035 {HYP,DBF}

- Homozygous Polled
- Short marked and fully pigmented
- Dam is the "super cow" 7098
- No other homozygous polled bull in the AHA data base can chart his levels in all three indexes
- Pivotal's flush sisters, at Birdwell Ranch, top the list of 7098 daughters



BR GOLD RUSH 569C 7098 2955 ET
 - Full Sister



BR VALIDATED B413 6035 7098
 - Dam



35073 E. C. R. 1550 N.
 Mason City, IL 62664
 Brent, cell 217-971-5897
 bhrnds@speednet.com



Fletcher, OK
 Jim Birdwell 580-695-2352
 Joel Birdwell 405-368-1058

BIRDWELL VANGUARD 5022 9337 {CHB}{DLF,HYF,IEF,MSUDF,MDF,DBF}



P44021997 Calved: 3/12/19 - Tattoo: BE 9337

EFBEEF TFL U208 TESTED X651 ET {SOD}{CHB}{DLF,HYF,IEF,MSUDF}
EFBEEF BR VALIDATED B413 {SOD}{CHB}{DLF,HYF,IEF,MSUDF,MDF,DBF}
 P43558667 EFBEEF 4R THYRA Y865 {DLF,HYF,IEF,MDF,DBC}

CHURCHILL SENSATION 028X {SOD}{DLF,HYF,IEF,MDF,DBF}
BR SENSATION 028X 3335 5022 {DLF,HYF,IEF,MSUDF}
 P43632454 BR TRUST 100W 6171 3335 {HYP}

- HOMOZYGOUS POLLED!
- In the 2022 Born Olson Test, Vanguard charted the best ratios for REA, DMI and BF
- BW 84 lb., WW ratio 110, YW ratio 107 in the Birdwell herd
- Maternal strength, his young daughters in production look fantasti!



CE	BW	WW	YW	DMI	SC	SCF	MM	M&G	MCE	MCW	UDDR	TEAT	CW	FAT	REA	MARB	BMI5	BIIS	CHBS
4.0	0.2	62	95	-0.1	1.2	25.9	38	69	4.8	79	1.40	1.50	56	0.032	1.16	0.65	539	654	165
47%	9%	30%	40%	13%	32%	3%	4%	6%	15%	25%	9%	4%	94%	59%	1%	1%	1%	1%	5%

SEMEN: 10 Straws for \$500; \$100/Certificates as needed
 Contact Birdwell Ranch

Slaytons'



Bedford, PA
 Paul cell 717-805-1376



Hartford, WI
 Steve cell 414-881-5274



Fletcher, OK
 Jim Birdwell 580-695-2352
 Joel Birdwell 405-368-1058

BIRDWELL DYNAMIC 5022 1673 ET {CHB}{DLF,HYF,IEF,MSUDF,MDF}



P44297680 Calved: 3/5/21 - Tattoo: BE 1673

SHF YORK 19H Y02 {SOD}{CHB}{DLF,HYF,IEF}
SHF DAYBREAK Y02 D287 ET {CHB}{DLF,HYF,IEF,MSUDF}
 P43676330 SHF MISS M326 T08 ET {DLF,HYF,IEF}

CHURCHILL SENSATION 028X {SOD}{DLF,HYF,IEF,MDF,DBF}
BR SENSATION 028X 3335 5022 {DLF,HYF,IEF,MSUDF}
 P43632454 BR TRUST 100W 6171 3335 {HYP}

- HOMOZYGOUS POLLED!
- Out of the incredible 5022 donor, who is also the dam of Vanguard. She is one of the top BMI5 cows in the breed. Arguably the best 028X daughter anywhere.
- Breed leader in 13 traits!!
- "Dynamic" phenotype, short marked and fully pigmented.
- Owned by Birdwell Ranch



BR SENSATION 028X 3335 5022
 - Dam of Vanguard and Dynamic



CE	BW	WW	YW	DMI	SC	SCF	MM	M&G	MCE	MCW	UDDR	TEAT	CW	FAT	REA	MARB	BMI5	BIIS	CHBS
7.6	0.6	58	94	-0.3	1.4	24.5	34	63	5.9	105	1.50	1.50	83	0.082	0.94	0.22	518	604	157
18%	13%	46%	47%	4%	23%	5%	13%	20%	10%	83%	2%	4%	16%	98%	2%	26%	2%	3%	8%

SEMEN: \$50/Straw, 10 unit minimum; \$75/Certificate
 Contact Birdwell Ranch for semen

BIRDWELL BULLNANZA 7098 0552ET {CHB}{DLF,HYF,IEF,MSUDF,MDF}



P44254853 Calved: 10/16/20 - Tattoo: BE 0552

SHF YORK 19H Y02 {SOD}{CHB}{DLF,HYF,IEF}
CHURCHILL BROADWAY 858F {CHB}{DLF,HYF,IEF,MSUDF,MDF,DBF}
 P43919937 CHURCHILL LADY 640D {DLF,HYF,IEF}

EFBEEF BR VALIDATED B413 {SOD}{CHB}{DLF,HYF,IEF,MSUDF,MDF,DBF}
BR VALIDATED B413 6035 7098 {DLF,HYF,IEF,MDF,DBF}
 P43857421 BR BENNETT 4R Y428 2101 6035 {HYP,DBP}

- HOMOZYGOUS POLLED!
- Dam is the "super cow" 7098
- No other sire in the AHA database that can match his EPD combination.
- Bullnanza is a multipurpose sire that will advance you in the right direction for a wide variety of traits.
- Calving ease, maternal strength and CARCASS!



CE	BW	WW	YW	DMI	SC	SCF	MM	M&G	MCE	MCW	UDDR	TEAT	CW	FAT	REA	MARB	BMI5	BIIS	CHBS
6.6	0.2	68	99	0.3	0.8	29.1	32	66	10.8	109	1.50	1.50	99	0.082	0.96	0.84	623	761	221
23%	9%	12%	28%	58%	74%	1%	22%	13%	1%	85%	2%	4%	2%	98%	2%	1%	1%	1%	1%

SEMEN: \$50/Straw, 10 straw minimum; \$75/Certificate
 Contact Birdwell Ranch for semen

The Genetic Power Your Herd Demands!

A breed changer with unrivaled phenotype and EPDs.



1HP00861 BAR JZ ON DEMAND

Reg#: 44355795 | RV Valor 9444G ET x NJW 73S W18 Homegrown 8Y ET | Homozygous Polled



H BL Miss Spice M380 ET, Daughter



H BL Miss Spice M412 ET, Daughter



Hoffman On Demand 4200, Son



Hoffman On Demand 4212, Son

All the makings of a breed changer!

- > His first calf crop is creating excitement in the breed.
- > Outstanding phenotype with unmatched power & curve-bending EPDs.
- > Embraces the future without sacrificing real-world traits.

CE	BW	VWV	YW	DMI	SC	SCF	MM	MG	MCE	MCW
14.1	0.9	78	121	1.1	1.6	19.8	26	65	3.7	97
.51	.81	.67	.61	.19	.47	.33	.23			.36
2%	16%	1%	3%		7%	27%		14%	26%	

UDDR	TEAT	CW	FAT	REA	MARB	\$BMI	\$BI	\$CHB
1.40	1.50	99	0.032	0.63	0.24	425	530	153
.49	.51	.23	.27	.23	.25			
9%	4%	2%		21%	23%	21%	15%	10%



Take your herd to the next level with On Demand.

Scan the code or contact your GENEX representative.

888.333.1783 // catalog.genex.coop

GENEX[™]
FOR GENERATIONS