



COYOTE RIDGE RANCH

2025 Private Treaty Offering

Polled and Horned Hereford Bulls

Coyote Ridge Ranch

18300 CR 43 LaSalle, CO 80645

Jane Evans Cornelius | (C) 970-371-0500

Hampton Cornelius | (C) 970-396-2935

Katie Cornelius & Lee Mayo | (C) 970-396-8320

For a complete listing and data visit ... *CoyoteRidgeHerefords.com*

Herd Sires

Herd Sires



CSC 502 6209 GOLD CREEK 824



CRR 8Y ASTUTE 018



NJW 141C 9139 LOYAL 35K



CRR 66589 BALANCE 107

AI Sires



NJW 202C 173 STEADFAST 156J



/S LONG HAUL 11443



/S MANDATE 66589

Foundation Sires



CRR 109 CATAPULT 322



CRR 719 CATAPULT 109



CHURCHILL SENSATION 028X



Welcome

Welcome to the 2025 Coyote Ridge Ranch Private Treaty bull offering. These are rancher ready bulls that will cover your needs. All are backed by the full bull guarantee and 45 years of producing cattle geared toward increasing your bottom line.

CRR bulls are sold **private treaty** giving you the opportunity to find what you need within your budget without the pressure of an auction. We work to help you find genetics that best suit your operation – and for a reasonable price. Complete performance data including carcass ultra sound information is available.

We are a three-generation family operation located on the high plains of Colorado in the shadow of the Rocky Mountains. We run a real-world western range program developed to add to your bottom line. Our long-term program has a proven track record of calving ease, maternal efficiency and superior growth backed by carcass data and feedyard results. Our herd consists of dependable problem free cows that work for a living. This philosophy has enabled us to consistently provide bulls for commercial ranchers as well as genetics for reputable seedstock breeders.

The bulls are fertility tested and passed BSE done by Countryside Large Animal Veterinary Service of Weld County, Colorado. They are vaccinated as recommended and are BVD-PI free.

Bulls noted MYO were raised until weaning by Mayo Ridge Ranch, Family members Katie Cornelius and Lee Mayo of Scott City, Kansas.

Select the right bulls now and we will deliver to you in time for breeding season. Look to CRR for your source of commercial bulls in volume and herdsires. Call any time for details. We'll be here when you need us — generation after generation.

As bulls are chosen they will be noted "SOLD" on the website.

For complete listing and VIDEOS visit ... coyoteridgeherefords.com

<https://vimeo.com/showcase/10974462>



18300 County Road 43
LaSalle, CO 80645
Jane Evans Cornelius
C: 970-371-0500
Hampton Cornelius
C: 970-396-2935
jecornelius@coyoteridgeherefords.com
CoyoteRidgeHerefords.com



7050 N. Taos Rd.
Scott City, KS 67871
Katie Cornelius • 970-396-8320
Lee Mayo • 620-874-0051
lee@hrcfeedyards.com



Sale Information

CRR PHILOSOPHY AND PRACTICES

- Bulls are not creep fed until 2 weeks before weaning so there are no artificial inflated weights.
- Bulls are developed in a 40-acre pasture on a ration of ground grass and alfalfa hay with 8 lb. of corn. They are sound, so you can expect many years of productivity.
- Bulls are backed by a problem free, excellent uddered cow herd. These mamas are hardworking and good looking.
- All cattle are backed by CRR 45 years of actual performance records and dam production records-real honest weights along with computer estimates of progeny performance (EPDs). EPDs are genomically enhanced and DNA verified.
- Performance is documented by 20 years of retained ownership and feedlot data on CRR steers – excellent weight gain, feed conversion and net profit. In real world situations our carcass data and resulting premiums have increased every year.
- CRR reserves the right to retain an interest in selected bulls as noted.

EPDs AND PERFORMANCE

Expected progeny differences (EPDs) are computer generated statistical predictions or estimates of expected performance of future progeny, not guarantees of performance. EPDs are updated weekly by the American Hereford Association as data is entered into the system. The EPDs in this catalog are from the 2/17/2025 report. EPDs printed are genomically enhanced to increase accuracy using DNA technology and are noted as such. We selected the most relevant data to include. Complete up to date EPDs can be viewed anytime online at www.hereford.org. These computer-generated predictions along with generations of actual performance records and your visual evaluation of the cattle provide the complete tools to select bulls that fit your needs.

CRR guarantees an acceptable PAP for high altitude. Because CRR is at 5,000 feet, we recommend you test bulls at your ranch after they have been at 6,000 feet for three weeks. CRR will reimburse you for cost.

GENETICS

The bulls have been DNA tested for parentage and any genetic abnormalities identified by the American Hereford Association. Any carriers of a recessive genetic marker is noted.

HYBRID VIGOR — CROSSBREEDING

The advantage of hybrid vigor is real — a Hereford bull on black or red angus cows will increase weaning weights 30-50 pounds per calf on average. The retained baldy females are more fertile, more efficient and last longer. The research, but better yet our customers, report an additional \$50 in net income per cow **per year** when they used Hereford bulls on Angus cows. Do the math. Can you afford to give up \$50 per cow?

CUSTOMER SERVICE

We will take the time to learn about your operation and provide any additional information to help you find what best suits your needs and is within your budget. We will deliver the bulls in time for spring breeding season. We will try to assist you in marketing your calves through our alliance with HRC Feedyard and various programs through the Hereford association Contact Lee Mayo at HRC Feed Yards with information about your calves – (Lee) 620-874-0051, lee@hrcfeedyards.com.

GUARANTEE

The bulls are fully guaranteed for the first breeding season absent evidence of extreme neglect or abuse. The bulls are fertility tested, vaccinated and are tested BVD-PI free. An injured or deceased bull will be replaced with a comparable bull less salvage value if a bull is available. If a replacement bull is not available, you will receive a sale credit for your cost less salvage to use in the future. We appreciate your business. If you don't make money with CRR bulls, we won't make money with CRR bulls. And we understand that.





824 **CSC 502 6209 GOLD CREEK 824**
 {DLF,HYF,IEF,MDF}

P43908780 — Calved: 4/28/18

GKB 88X LARAMIE B293 {SODI}(DLF,HYF,IEF,MDF,DBF)
KT GOLD CREEK 6209 {DLF,HYF,IEF,MSUDF}
 P43717063 KT MS 44U DURANGO 2167 {DODI}(DLF,HYF,IEF,MSUDF)

NJW 73S W18 HOMETOWN 10Y ET {SODI}(CHB)(DLF,HYF,IEF,MSUDF,MDC)
CSC 10Y LADY DEW 502 ET {DLF,HYF,IEF,MSUDF,MDF}
 P43589151 NJW 5M 4037 DEW 185W ET {DODI}(DLF,HYF,IEF)

NJW 98S R117 RIBEYE 88X ET {SODI}(DLF,HYF,IEF,MSUDF,MDF,DBF)
 GKB S&S GOLD APRIL B928 ET {DLF,HYF,IEF,MSUDF}
 NJW 98S DURANGO 44U {SODI}(DLF,HYF,IEF)
 KT MS K085 PROSPECTOR 4147 {DODI}(DLF,HYF,IEF)
 SHF WONDER M326 W18 ET {SODI}(CHB)(DLF,HYF,IEF,MDC,DBF)
 NJW P606 72N DAYDREAM 73S {DLF,HYF,IEF,MSUDF,MDF}
 THM DURANGO 4037 {SODI}(DLF,HYF,IEF)
 NJW 57G 74G DEW 5M {DLF,HYF,IEF}

- <https://player.vimeo.com/video/1058007915?h=8aadd8d293>
- “Cody” A unique opportunity to purchase a proven herd bull in the prime of his life. “Cody” has been used hard at CRR and has been the most problem free herd bull that has walked our pastures. He is a big, stout, well-built bull with great testicles and perfect feet. He sires exceptionally hard-working daughters that consistently wean heavy calves that continue to grow. His daughters are elegant, feminine fronted, with very tight and refined udders. His sons are working in both commercial and registered herds across the country. They, like him, are big, stout masculine bulls with great feet and structural design. To continue our genetic diversity, we need to move on from Cody; but offer him with great confidence he can build someone else’s herd like he has done at CRR.
- Selling ½ interest, full possession and 250 straws of semen.



CED	BW	WW	YW	MM	SC	REA	MARB	BMI\$	BII\$	CHB\$
-2.4	5.6	72	119	34	1.6	0.55	-0.01	269	343	117
	ACT BW	ADJ WW	ADJ YW	Age of Dam	SC	REA	MARB			
	92	712	1364	4	41	NA	NA			POLLED





403 **CRR 1443 CALIBER 403**
 {DLF,HYF,IEF,MSUDF,MDF,DBF}

P44586283— Calved: 2/2/24

NJW LONG HAUL 36E ET {DLF,HYF,IEF,MSUDF,MDF,DBF}
 /S LONG HAUL 11443 {DLF,HYF,IEF,MSUDF,MDF,DBF}
 P44311362 SFCC TRM MADDIE 9192 {DLF,HYF,IEF,MSUDF,MDC}

CHURCHILL SENSATION 028X {SOD}{DLF,HYF,IEF,MDF,DBF}
 NJW 792 10W RITA 11B {DLF,HYF,IEF,MSUDF,MDF}
 /S MANDATE 66589 ET {DLF,HYF,IEF,MSUDF,MDF,DBF}
 SFCC TRM ADDIE 7077 {DLF,HYF,IEF,MDF}

- <https://player.vimeo.com/video/1056224419?h=3c4e4424bc>
- Herd Bull Alert.
- The anchor to CRR's Reserve Champion Pen in Denver. A true calving ease bull that is huge ribbed, big hipped and masculine fronted. Great markings, heavy pigment and Homo Polled add to what he brings to the cattle industry.

CRR 8Y ASTUTE 018 {DLF,HYF,IEF,MSUDF,MDF}
CRR 018 AMBER 233 {DLF,HYF,IEF,MSUDF,MDF,DBF}
 P44405094 CRR 322 AMBER 517

NJW 735 W18 HOMEGROWN 8Y ET {SOD}{DLF,HYF,IEF,MSUDF,MDC,DBF}
 CRR 028X HONEY 505
 CRR 109 CATAPULT 322 {SOD}{DLF,HYF,IEF,MSUDF,MDF,DBF}
 CRR 713 AMBER 396 {DLF,HYF,IEF,MSUDF}



CED	BW	WW	YW	MM	SC	REA	MARB	BMI\$	BII\$	CHB\$
10.4	-1.8	54	86	39	1.4	0.46	0.13	444	520	128
	ACT BW	ADJ WW	ADJ YW	Age of Dam	SC	REA	MARB			
	47	727	1351	2	39	16.79	3.02	HOMOZYGOUS POLLED		



405

CRR 170 DIVERGENT 405

{DLF,HYF,IEF,MSUDF,MDF,DBF}

P44586275— Calved: 1/28/24

CSC 502 6209 GOLD CREEK 824 (DLF,HYF,IEF,MDF) KT GOLD CREEK 6209 (DLF,HYF,IEF,MSUDF)
CRR 824 DIVERGENT 170 (DLF,HYF,IEF,MSUDF,MDF,DBF) CSC 10Y LADY DEW 502 ET (DLF,HYF,IEF,MSUDF,MDF)
 P44294516 CRR 028X JULIANNA 608 (DLF,HYF,IEF,MSUDF) CHURCHILL SENSATION 028X (SOD)(DLF,HYF,IEF,MDF,DBF)
 CRR 719T JULIANNE 482 ET (DLF,HYF,IEF)
 CRR 8Y ASTUTE 018 (DLF,HYF,IEF,MSUDF,MDF) NJW 73S W18 HOMEGROWN 8Y ET (SOD)(DLF,HYF,IEF,MSUDF,MDC,DBF)
CRR 018 DONNA 203 CRR 028X HONEY 505
 P44405228 CRR 6589 DONNA 017 /S MANDATE 66589 ET (DLF,HYF,IEF,MSUDF,MDF,DBF)
 CRR 559 DONNA 738



- <https://player.vimeo.com/video/1056224451?h=f362e28c35>
- A well-designed heifer safe bull out of a great uddered high quality 2-year-old. He is long, big topped and square hipped. Besides calving ease, he brings quality, maternals and the right amount of performance to the table. Homo Polled.



CED	BW	WW	YW	MM	SC	REA	MARB	BMI\$	BII\$	CHB\$
8.0	0.7	48	85	28	1.1	0.12	0.18	427	502	100
ACT BW	ADJ WW	ADJ YW	Age of Dam	SC	REA	MARB	HOMOZYGOUS POLLED			
70	654	1179	2	36	13.62	2.65				

412

CRR 170 DIVERSE 412

{DLF,HYF,IEF,MSUDF}

P44585928— Calved: 2/1/24

CSC 502 6209 GOLD CREEK 824 (DLF,HYF,IEF,MDF) KT GOLD CREEK 6209 (DLF,HYF,IEF,MSUDF)
CRR 824 DIVERGENT 170 (DLF,HYF,IEF,MSUDF,MDF,DBF) CSC 10Y LADY DEW 502 ET (DLF,HYF,IEF,MSUDF,MDF)
 P44294516 CRR 028X JULIANNA 608 (DLF,HYF,IEF,MSUDF) CHURCHILL SENSATION 028X (SOD)(DLF,HYF,IEF,MDF,DBF)
 CRR 719T JULIANNE 482 ET (DLF,HYF,IEF)
 KJ BJ 309C LEADER 182F (DLF,HYF,IEF,MSUDF,MDF,DBF) R LEADER 6964 (SOD)(DLF,HYF,IEF,MSUDF,DBF)
KJ DCC 246F MISTY 660K (DLF,HYF,IEF,MSUDF,MDF,DBF) KJ BJ 236X TIMEWISE 309C ET (DLF,HYF,IEF,MSUDF,MDF)
 44372209 KJ BJ 8002 MISTY 246F (DOD) KJ BJ 319X LARAMIE 619D ET (DLF,HYF,IEF,MSUDF)
 KJ BJ 274S MISTY 8002 ET (DLF,HYF,IEF,MSUDF)



- <https://player.vimeo.com/video/1056224466?h=0fcdb7c70>
- A calving ease bull that will be noticed in the bull pen. A short marked, dark red bull that has tons of pigment. Visually 412 is deep, long, level hipped and easy fleshing. He boasts a big weaning weight out of an elite, hardworking first calf heifer.



CED	BW	WW	YW	MM	SC	REA	MARB	BMI\$	BII\$	CHB\$
6.8	0.5	58	87	32	0.4	0.28	0.14	421	503	87
ACT BW	ADJ WW	ADJ YW	Age of Dam	SC	REA	MARB	POLLED			
74	746	1246	2	35	13.24	3.13				

413

CRR 1443 LONG HAUL 413

{DLF,HYF,IEF,MSUDF,MDF,DBF}

P44586288— Calved: 2/1/24

NJW LONG HAUL 36E ET (DLF,HYF,IEF,MSUDF,MDF,DBF) CHURCHILL SENSATION 028X (SOD)(DLF,HYF,IEF,MDF,DBF)
/S LONG HAUL 11443 (DLF,HYF,IEF,MSUDF,MDF,DBF) NJW 79Z 10W RITA 11B (DLF,HYF,IEF,MSUDF,MDF)
 P44311362 SFCC TRM MADDIE 9192 (DLF,HYF,IEF,MSUDF,MDC) /S MANDATE 66589 ET (DLF,HYF,IEF,MSUDF,MDF,DBF)
 SFCC TRM ADDIE 7077 (DLF,HYF,IEF,MDF)
 CSC 502 6209 GOLD CREEK 824 (DLF,HYF,IEF,MDF) KT GOLD CREEK 6209 (DLF,HYF,IEF,MSUDF)
CRR 824 DONNA 247 (HYP) CSC 10Y LADY DEW 502 ET (DLF,HYF,IEF,MSUDF,MDF)
 P44405037 CRR 109 DONNA 438 (HYP) CRR 719 CATAPULT 109 (SOD)(DLF,HYF,IEF,MDF)
 CRR 713 DONNA 221 (HYP)



- <https://player.vimeo.com/video/1056224485?h=32c625763c>
- A rugged, stout-made calving ease bull. This moderate, easy-doing bull is built for longevity with his combination of great structure, doing-ability, and great feet. Use him on your heifers to produce premium replacement females and profitable steer-mates.



CED	BW	WW	YW	MM	SC	REA	MARB	BMI\$	BII\$	CHB\$
7.8	0.4	59	87	35	1.7	0.45	0.20	396	478	117
ACT BW	ADJ WW	ADJ YW	Age of Dam	SC	REA	MARB	SCURRED			
70	684	1246	2	38	12.77	2.53				



416 CRR 1443 LONGHAUL 416

{DLF, HYF, IEF, MSUDF, MDF, DBF}

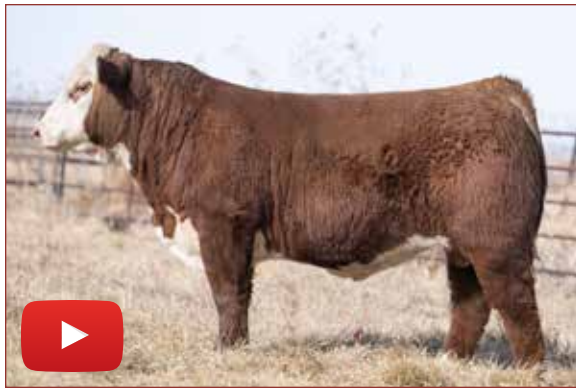
P44586370 — Calved: 2/1/24

NJW LONG HAUL 36E ET {DLF, HYF, IEF, MSUDF, MDF, DBF} CHURCHILL SENSATION 028X {SOD}{DLF, HYF, IEF, MSUDF, DBF}
 /S LONG HAUL 11443 {DLF, HYF, IEF, MSUDF, MDF, DBF} NJW 792 10W RITA 11B {DLF, HYF, IEF, MSUDF, MDF}
 P44311362 SFCC TRM MADDIE 9192 {DLF, HYF, IEF, MSUDF, MDC} /S MANDATE 66589 ET {DLF, HYF, IEF, MSUDF, MDF, DBF}
 CSC 502 6209 GOLD CREEK 824 {DLF, HYF, IEF, MSUDF} SFCC TRM ADDIE 7077 {DLF, HYF, IEF, MDP}
 CRR 824 ANDREA 2110 {DLF, HYF, IEF, MSUDF, MDF, DBF} KT GOLD CREEK 6209 {DLF, HYF, IEF, MSUDF}
 P44405212 CRR 81E ANDREA 914 {DOD}{HYP} CSC 10Y LADY DEW 502 ET {DLF, HYF, IEF, MSUDF, MDF}
 NJW 160B 028X HISTORIC 81E ET {DLF, HYF, IEF, MSUDF, MDF, DBF}
 CRR 322 ANDREA 744 {HYP}

- <https://player.vimeo.com/video/1056224498?h=3ed8c1a356>
- A Homo Polled heifer safe bull that is built like we like them. He's rugged, big middled and full of muscle shape. High indexing bull at weaning and yearling. I love his short markings and pigment.



CED	BW	WW	YW	MM	SC	REA	MARB	BMI\$	BII\$	CHB\$
11.2	0.1	64	98	43	1.3	0.66	0.24	460	551	133
	ACT BW	ADJ WW	ADJ YW	Age of Dam	SC	REA	MARB			
	70	761	1287	2	35	14.61	2.26	HOMOZYGOUS POLLED		



424 CRR 1443 LONG HAUL 424

{DLF, HYF, IEF, MSUDF, MDF, DBF}

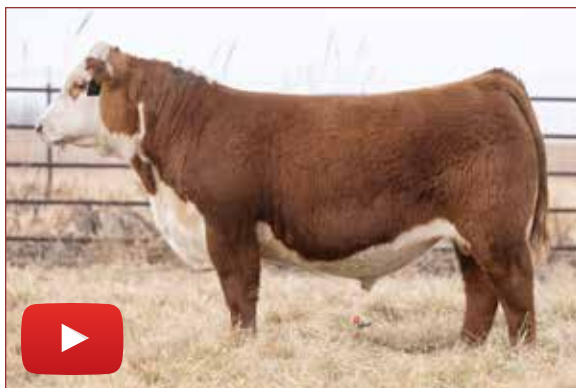
P44586298 — Calved: 2/3/24

NJW LONG HAUL 36E ET {DLF, HYF, IEF, MSUDF, MDF, DBF} CHURCHILL SENSATION 028X {SOD}{DLF, HYF, IEF, MSUDF, DBF}
 /S LONG HAUL 11443 {DLF, HYF, IEF, MSUDF, MDF, DBF} NJW 792 10W RITA 11B {DLF, HYF, IEF, MSUDF, MDF}
 P44311362 SFCC TRM MADDIE 9192 {DLF, HYF, IEF, MSUDF, MDC} /S MANDATE 66589 ET {DLF, HYF, IEF, MSUDF, MDF, DBF}
 PYRAMID CANDOR 9139 {CHB}{DLF, HYF, IEF, MSUDF, MDF} SFCC TRM ADDIE 7077 {DLF, HYF, IEF, MDP}
 CRR 9139 JULIA 281 SHF DAYBREAK Y02 D287 ET {CHB}{DLF, HYF, IEF, MSUDF}
 P44405219 CRR 8Y JULIANNE 950 {DLF, HYF, IEF, MSUDF, MDF} FHF 38Y RITA 197C {DOD}{DLF, HYF, IEF, MSUDF}
 NJW 73S W18 HOMEGROWN 8Y ET {SOD}{DLF, HYF, IEF, MSUDF, MDC, DBF}
 CRR 367 JULIANNE 647 {HYP}

- <https://player.vimeo.com/video/1056224502?h=ca0889edba>
- A high performing calving ease bull that we really like. He's masculine, huge ribbed and powerful hiped with a long, sound stride. His actual performance mirrors his genomic values. A business bull for the true cattleman with an exceptional birth to yearling weight spread.



CED	BW	WW	YW	MM	SC	REA	MARB	BMI\$	BII\$	CHB\$
9.5	0.4	69	105	51	0.9	0.58	0.26	527	629	137
	ACT BW	ADJ WW	ADJ YW	Age of Dam	SC	REA	MARB			
	77	768	1308	2	35	14.09	2.49	SCURRED		



434 CRR 107 BALANCE 434

{DLF, HYF, IEF, MSUDF, MDF, DBF}

P44586279 — Calved: 2/10/24

/S MANDATE 66589 ET {DLF, HYF, IEF, MSUDF, MDF, DBF} R LEADER 6964 {SOD}{DLF, HYF, IEF, MSUDF, DBF}
 CRR 66589 BALANCE 107 {DLF, HYF, IEF, MSUDF, MDF, DBF} /S LADY DOMINO 0158X {DLF, HYF, IEF}
 P44296384 CRR 8Y ECLIPSE 9102 {DLF, HYF, IEF, MSUDF, MDC} NJW 73S W18 HOMEGROWN 8Y ET {SOD}{DLF, HYF, IEF, MSUDF, MDC, DBF}
 CRR 8Y ASTUTE 018 {DLF, HYF, IEF, MSUDF, MDF} CRR 021 ECLIPSE 281 {DOD}{DLP, HYP}
 CRR 018 AMBER 214 NJW 73S W18 HOMEGROWN 8Y ET {SOD}{DLF, HYF, IEF, MSUDF, MDC, DBF}
 P44405229 CRR 322 AMBER 032 CRR 028X HONEY 505
 CRR 109 CATAPULT 322 {SOD}{DLF, HYF, IEF, MSUDF, MDF, DBF}
 CRR C63 AMBER 729

- <https://player.vimeo.com/video/1056224590?h=880c4af20>
- A balanced trait bull that covers all the bases. This athletic, heavily muscled bull is built right from the ground up. He combines a moderate birthweight with excellent performance and has a highly maternal pedigree. His 2-year-old dam knocked it out of the park. Full pigment. CRR Baldy Maker.



CED	BW	WW	YW	MM	SC	REA	MARB	BMI\$	BII\$	CHB\$
4.4	1.9	63	92	41	0.9	0.58	0.05	499	580	117
	ACT BW	ADJ WW	ADJ YW	Age of Dam	SC	REA	MARB			
	79	694	1176	2	33	14.77	1.91	POLLED		

436

CRR 018 ASTUTE 436

{DLF,HYF,IEF,MSUDF,MDF,DBF}

P44586207 — Calved: 2/10/24

NJW 735 W18 HOMEGROWN 8Y ET (DLE,HYF,IEF,MSUDF,MDF,DBF) SHF WONDER M326 W18 ET (SOD)(DLE,HYF,IEF,MDC,DBF)
CRR 8Y ASTUTE 018 (DLE,HYF,IEF,MSUDF,MDF) NJW P606 72N DAYDREAM 73S (DLE,HYF,IEF,MSUDF,MDF)
 P44184093 CRR 028X HONEY 50S CHURCHILL SENSATION 028X (SOD)(DLE,HYF,IEF,MDF,DBF)
 CRR 100W HONEY 357 ET
 SR BEEF OPTIMAN 1466 (CHB)(DLE,HYF,IEF,MDF) BW 5W 38W BEEF 172Z (DLE,HYF,IEF)
CRR 466 KELLY 098 SR RW2 OPTIMAD 0808 (DLE,HYF,IEF)
 P44182104 CRR 109 KELLY 742 CRR 719 CATAPULT 109 (SOD)(DLE,HYF,IEF,MDF)
 CRR 713 KELLY 112 (DLE,HYF,IEF,MSUDF)



- <https://player.vimeo.com/video/1056224600?h=5e98bd75ea>
- A stout, rugged, high volumed bull that is built and bred for low input operations that demand efficiency in their cowherd. His great uddered dam is the right kind. Homo Polled.



CED	BW	WW	YW	MM	SC	REA	MARB	BMI\$	BII\$	CHB\$
12.8	-1.4	43	74	38	0.5	0.46	0.02	495	556	99
ACT BW	ADJ WW	ADJ YW	Age of Dam	SC	REA	MARB	HOMOZYGOUS POLLED			
75	684	1204	3	33	13.55	3.08				

440

CRR 107 BALANCE 440

{DLF,HYF,IEF,MSUDF,MDF,DBF}

P44586375 — Calved: 2/12/24

/S MANDATE 66589 ET (DLE,HYF,IEF,MSUDF,MDF,DBF) R LEADER 6964 (SOD)(DLE,HYF,IEF,MSUDF,DBF)
CRR 66589 BALANCE 107 (DLE,HYF,IEF,MSUDF,MDF,DBF) /S LADY DOMINO 0158X (DLE,HYF,IEF)
 P44296384 CRR 8Y ECLIPSE 9102 (DLE,HYF,IEF,MSUDF,MDC) NJW 735 W18 HOMEGROWN 8Y ET (SOD)(DLE,HYF,IEF,MSUDF,MDC,DBF)
 CRR 021 ECLIPSE 281 (DOD)(DLP,HYP)
 CSC 502 6209 GOLD CREEK 824 (DLE,HYF,IEF,MDF) KT GOLD CREEK 6209 (DLE,HYF,IEF,MSUDF)
CRR 824 JULIA 2137 CSC 10Y LADY DEW 502 ET (DLE,HYF,IEF,MSUDF,MDF)
 44405187 CRR 028X JULIA 737 CHURCHILL SENSATION 028X (SOD)(DLE,HYF,IEF,MDF,DBF)
 CRR 109 JULIA 528



- <https://player.vimeo.com/video/1056224624?h=279d111b05>
- A performance bull that indexed high at weaning and yearling. He has a high CHB index and is in the top 2% of the breed in his growth EPDs. This short-marked bull is thick ended, meaty topped and high-volumed.



CED	BW	WW	YW	MM	SC	REA	MARB	BMI\$	BII\$	CHB\$
3.8	2.7	73	117	40	1.8	0.66	0.19	432	530	145
ACT BW	ADJ WW	ADJ YW	Age of Dam	SC	REA	MARB	SCURRED			
79	706	1250	2	37	13.13	2.25				

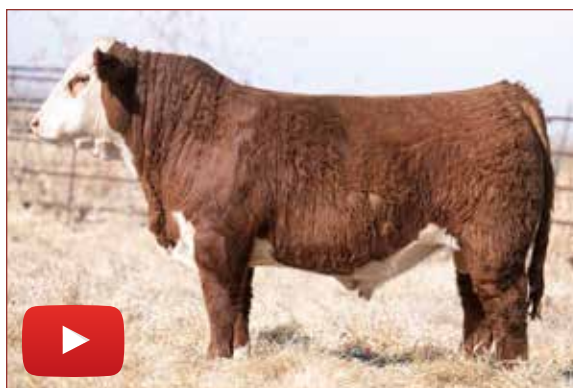
441

CRR 1443 LONG HAUL 441

{DLF,HYF,IEF,MSUDF,MDF,DBF}

P44586015 — Calved: 2/12/24

NJW LONG HAUL 36E ET (DLE,HYF,IEF,MSUDF,MDF,DBF) CHURCHILL SENSATION 028X (SOD)(DLE,HYF,IEF,MDF,DBF)
/S LONG HAUL 11443 (DLE,HYF,IEF,MSUDF,MDF,DBF) NJW 79Z 10W RITA 11B (DLE,HYF,IEF,MSUDF,MDF)
 P44311362 SFCC TRM MADDIE 9192 (DLE,HYF,IEF,MSUDF,MDC) /S MANDATE 66589 ET (DLE,HYF,IEF,MSUDF,MDF,DBF)
 SFCC TRM ADDIE 7077 (DLE,HYF,IEF,MDF)
 CRR 109 CATAPULT 322 (SOD)(DLE,HYF,IEF,MSUDF,MDF,DBF) CRR 719 CATAPULT 109 (SOD)(DLE,HYF,IEF,MDF)
CRR 322 ECLIPSE 724 (DLE,HYF,IEF,MSUDF,MDF,DBF) CRR 713 KELLY 0117 (DLE,HYF,IEF)
 P43847213 CRR 156T ECLIPSE 554ET (DOD) CMR GVP MR MATERNAL 156T (SOD)(DLE,HYF,IEF,MSUDF,MDF)
 CRR 719 ECLIPSE 101 (DOD)(DLE,HYF,IEF)



- <https://player.vimeo.com/video/1056224634?h=78d6c76ef1>
- A "Rancher-type" of bull. He's big testicled, rugged and masculine. 441 has all the bells and whistles. Loads of pigment, short marked and Homo Polled. Great birth to yearling spread.



CED	BW	WW	YW	MM	SC	REA	MARB	BMI\$	BII\$	CHB\$
5.5	0.8	67	102	39	1.3	0.46	-0.02	470	550	106
ACT BW	ADJ WW	ADJ YW	Age of Dam	SC	REA	MARB	HOMOZYGOUS POLLED			
84	706	1222	7	38	14.16	2.28				



444

CRR 35K LOYAL 444

{DLF,HYF,IEF,MSUDF,MDF,DBF}

P44586269 — Calved: 2/12/24

PYRAMID CANDOR 9139 (CHB){DLF,HYF,IEF,MSUDF,MDF} SHF DAYBREAK Y02 D287 ET (CHB){DLF,HYF,IEF,MSUDF}
 NJW 141C 9139 LOYAL 35K (DLF,HYF,IEF,MSUDF,MDF,DBF) FHF 38Y RITA 197C (DOD){DLF,HYF,IEF,MSUDF}
 P44390850 NJW 161Z 190Z PRAIRIE 141C (DLF,HYF,IEF,MSUDF) NJW 78P TWENTYTWELVE 190Z ET (DLF,HYF,IEF)
 NJW 39S 38W PRAIRIE 161Z (DLF,HYF,IEF,MSUDF,MDF)
 CRR 322 CATAPULT 910 (DLE,HYE,IEF,MSUDF) CRR 109 CATAPULT 322 (SOD){DLF,HYF,IEF,MSUDF,MDF,DBF}
 CRR 910 ECLIPSE 176 (DLP,HYP) CRR 028X ECLIPSE 706 (DLF,HYF,IEF,MSUDF)
 44294533 CRR 200Z ECLIPSE 443 (DOD){DLP,HYP} CHURCHILL RED BULL 200Z (SOD){DLF,HYF,IEF,MSUDF,MDF,DBF}
 CRR 021 ECLIPSE 281 (DOD){DLP,HYP}

- <https://player.vimeo.com/video/1056224654?h=57c6646196>
- A very well-balanced bull on paper and visually. He is a fault-free bull that is designed to build profitable cowherds and keep your cow size in check. His sharp uddered dam is the kind that will keep you in business. Full pigment with short markings. CRR Baldy Maker



CED	BW	WW	YW	MM	SC	REA	MARB	BMI\$	BII\$	CHB\$
2.4	2.4	56	94	34	1.1	0.46	0.13	430	507	128
	ACT BW	ADJ WW	ADJ YW	Age of Dam	SC	REA	MARB			
	80	640	1112	3	37	13.10	2.47			POLLED





446 **CRR 156J BRANDED 446**
 {DLF,HYF,IEF,MSUDF,MDF,DBF}

P44586118 — Calved: 2/13/24

NJW 79Z Z311 ENDURE 173D ET {S001,CHB}{DLF,HYF,IEF,MSUDF,MDF,DBF}
 NJW 202C173D STEADFAST 156J ET {CHB}{DLF,HYF,IEF,MSUDF,MDF,DBF}
 P44276463 NJW 160Z 8Y HOME MAKER 202C {DLF,HYF,IEF,MSUDF,MDF,DBF}
 /S MANDATE 66589 ET {DLF,HYF,IEF,MSUDF,MDF,DBF}
 CRR 6589 ECLIPSE 014 {DLF,HYF,IEF,MSUDF,MDF,DBF}
 P44184142 CRR 322 ECLIPSE 829 {D000}

KCF BENNETT ENCORE Z311 ET {S001,CHB}{DLF,HYF,IEF,MSUDF,MDF,DBF}
 BW 91H 100W RITA 79Z ET {DLF,HYF,IEF,MSUDF,MDF,DBF}
 NJW 73S W18 HOMEGROWN 8Y ET {S001,DLF,HYF,IEF,MSUDF,MDF,DBF}
 NJW 73S 88X DAYDREAM 160Z {D000}{DLF,HYF,IEF,MSUDF,MDF,DBF}
 R LEADER 6964 {S001}{DLF,HYF,IEF,MSUDF,MDF,DBF}
 /S LADY DOMINO 0158X {DLF,HYF,IEF}
 CRR 109 CATAPULT 322 {S001}{DLF,HYF,IEF,MSUDF,MDF,DBF}
 CRR 028X ECLIPSE 510 {D000}{DLF,HYF,IEF,MSUDF}

- <https://player.vimeo.com/video/1056224667?h=cae9b171ca>
- Herd Bull Alert.
- Denver Pen bull member that is a true breed changer. He is a Homo Polled, fully pigmented bull who demonstrates as much mass, muscle expression and body shape as you can put into one. Stems from a prolific, highly maternal and productive cow family with nearly perfect udders and performance records. He brings maternal power, high growth and front pasture quality to the table. Excellent testicle size and shape.

SOLD



CED	BW	WW	YW	MM	SC	REA	MARB	BMI\$	BIIS	CHBS
1.3	3.5	67	111	33	2.3	0.87	0.13	448	534	151
	ACT BW	ADJ WW	ADJ YW	Age of Dam	SC	REA	MARB			
	86	704	1332	4	41	14.62	2.49	HOMOZYGOUS POLLED		





447 **CRR 156J STEADFAST 447**
 {DLF,HYF,IEF,MSUDF,MDF,DBF}

P44586210 — Calved: 2/14/24

NJW 79Z Z311 ENDURE 173D ET (S00)(CHB)(DLF,HYF,IEF,MSUDF,MDF,DBF)
 NJW 202C173DSTEADFAST 156J ET (CHB)(DLF,HYF,IEF,MSUDF,MDF,DBF)
 P44276463 NJW 160Z 8Y HOME MAKER 202C (DLF,HYF,IEF,MSUDF,MDF,DBF)

KCF BENNETT ENCORE Z311 ET (S00)(CHB)(DLF,HYF,IEF,MSUDF,MDF,DBF)
 BW 91H 100W RITA 79Z ET (DLF,HYF,IEF,MSUDF,MDF)
 NJW 73S W18 HOMEGROWN 8Y ET (S00)(DLF,HYF,IEF,MSUDF,MDF,DBF)
 NJW 73S 88X DAYDREAM 160Z (D00)(DLF,HYF,IEF,MSUDF,MDF)

- <https://player.vimeo.com/video/1056224678?h=0fafa980c3>
- Herd Bull Alert.
- True cattlemen will find this bull. He is an elite calving ease, highly maternal bull with virtually no holes in his genomic profile or visually. Study his numbers, watch his video to truly appreciate how balanced this bull is. His dam is special and is the kind of female we want to duplicate in large numbers.

/S MANDATE 66589 ET (DLF,HYF,IEF,MSUDF,MDF,DBF)
 CRR 6589 KELLY 111 (DLF,HYF,IEF,MSUDF,MDF)
 P44298810 CRR 652 KELLY 9106 (DLF,HYF,IEF,MSUDF,MDF)

R LEADER 6964 (S00)(DLF,HYF,IEF,MSUDF,DBF)
 /S LADY DOMINO 0158X (DLF,HYF,IEF)
 CRR 169A HOMERUN 652 (DLF,HYF,IEF,MSUDF,MDF)
 CRR 713 KELLY 112 (DLF,HYF,IEF,MSUDF)



CED	BW	WW	YW	MM	SC	REA	MARB	BMI\$	BIIS	CHBS
12.7	-0.5	66	100	39	1.4	0.62	0.25	521	619	148
	ACT BW	ADJ WW	ADJ YW	Age of Dam	SC	REA	MARB			
	65	714	1254	3	38	13.60	3.41	POLLED		





448 **CRR 1443 SUNDOWN 448**
 {DLF,HYF,IEF,MSUDEF,MDF,DBF}

P44585980 — Calved: 2/14/24

NJW LONG HAUL 36E ET (DLF,HYF,IEF,MSUDEF,MDF,DBF)
/S LONG HAUL 11443 (DLF,HYF,IEF,MSUDEF,MDF,DBF)
 P44311362 SFCC TRM MADDIE 9192 (DLF,HYF,IEF,MSUDEF,MDF)
 CRR 719 CATAPULT 109 (SOD)(DLF,HYF,IEF,MSUDEF,MDF,DBF)
CRR 109 KELLY 530 ET (DOD)(DLF,HYF,IEF,MSUDEF,MDF,DBF)
 P43589427 CRR 435 KELLY 161 (DLF,HYF,IEF,MSUDEF,MDF,DBF)

CHURCHILL SENSATION 028X (SOD)(DLF,HYF,IEF,MSUDEF,MDF,DBF)
 NJW 792 10W RITA 11B (DLF,HYF,IEF,MSUDEF,MDF,DBF)
 /S MANDATE 66589 ET (DLF,HYF,IEF,MSUDEF,MDF,DBF)
 SFCC TRM ADDIE 7077 (DLF,HYF,IEF,MDF)
 TH 122 711 VICTOR 719T (SOD)(DLF,HYF,IEF,MSUDEF,MDF,DBF)
 CRR 4037 ECLIPSE 808 (DLF,HYF,IEF)
 DM BR SOONER (CHB)(DLF,HYF,IEF,MSUDEF,MDF,DBF)
 CRR D03 KELLY 361 (DLF,HYF,IEF)

- <https://player.vimeo.com/video/1056224687?h=1d715e6c15>
- Herd Bull Alert.
- The leadoff bull in our Denver Pen. 448 is a long bodied, loose structured powerhouse with presence and quality. He is big footed, rugged in his design and built right from the ground up. A true performance bull with great growth numbers and profit indexes. His 10-year-old Dam of Distinction is a stalwart in the CRR cowherd. Homo Polled, short marked and dark cherry red.



CED	BW	WW	YW	MM	SC	REA	MARB	BMI\$	BII\$	CHB\$
0.4	2.4	74	121	47	1.2	0.83	0.03	496	582	141
	ACT BW	ADJ WW	ADJ YW	Age of Dam	SC	REA	MARB			
	92	765	1423	8	36	16.00	2.78	HOMOZYGOUS POLLED		





451

CRR 156J STEADFAST 451

{DLF,HYF,IEF,MSUDF,MDF,DBF}

P44586033 — Calved: 2/15/24

NJW 79Z Z311 ENDURE 173D ET (S001)(CHB)(DLF,HYF,IEF,MSUDF,MDF,DBF) KCF BENNETT ENCORE Z311 ET (S001)(CHB)(DLF,HYF,IEF,MSUDF,MDF,DBF)
 NJW 202C173DSTEADFAST 156J ET (CHB)(DLF,HYF,IEF,MSUDF,MDF,DBF) BW 91H 100W RITA 79Z ET (DLF,HYF,IEF,MSUDF,MDF)
 P44276463 NJW 160Z 8Y HOME MAKER 202C (DLF,HYF,IEF,MSUDF,MDF,DBF) NJW 735 W18 HOMEGROWN 8Y ET (S001)(DLF,HYF,IEF,MSUDF,MDF,DBF)
 NJW 735 88X DAYDREAM 160Z (D001)(DLF,HYF,IEF,MSUDF,MDF)

CRR 109 CATAPULT 322 (S001)(DLF,HYF,IEF,MSUDF,MDF,DBF) CRR 719 CATAPULT 109 (S001)(DLF,HYF,IEF,MSUDF,MDF,DBF)
 CRR 322 ECLIPSE 829 (D001) CRR 713 KELLY 0117 (DLF,HYF,IEF,MSUDF,MDF,DBF)
 P43950149 CRR 028X ECLIPSE 510 (D001)(DLF,HYF,IEF,MSUDF,MDF,DBF) CHURCHILL SENSATION 028X (S001)(DLF,HYF,IEF,MSUDF,MDF,DBF)
 CRR 485T ECLIPSE 313



- <https://player.vimeo.com/video/1056224705?h=ada4e37da7>
- A balanced trait bull out of one of my favorite cows. His DOD dam is a model beef cow – high quality, perfect udder and never misses. He is a super long, heavily muscled bull with great testicular development. His performance ratios mirror his genomic values. Low birth with exceptional growth. Use him to build your cowherd. Great pigment and eye set. CRR Baldy Maker Deluxe.

CED	BW	WW	YW	MM	SC	REA	MARB	BMI\$	BII\$	CHB\$
5.4	0.9	60	95	42	1.8	0.81	-0.03	492	563	130
	ACT BW	ADJ WW	ADJ YW	Age of Dam	SC	REA	MARB			
	82	745	1276	6	41	13.68	2.38	SCURRED		



461

CRR 156J STEADFAST 461

{DLF,HYF,IEF,MSUDF,MDF,DBF}

P44586348 — Calved: 2/16/24

NJW 79Z Z311 ENDURE 173D ET (S001)(CHB)(DLF,HYF,IEF,MSUDF,MDF,DBF) KCF BENNETT ENCORE Z311 ET (S001)(CHB)(DLF,HYF,IEF,MSUDF,MDF,DBF)
 NJW 202C173DSTEADFAST 156J ET (CHB)(DLF,HYF,IEF,MSUDF,MDF,DBF) BW 91H 100W RITA 79Z ET (DLF,HYF,IEF,MSUDF,MDF)
 P44276463 NJW 160Z 8Y HOME MAKER 202C (DLF,HYF,IEF,MSUDF,MDF,DBF) NJW 735 W18 HOMEGROWN 8Y ET (S001)(DLF,HYF,IEF,MSUDF,MDF,DBF)
 NJW 735 88X DAYDREAM 160Z (D001)(DLF,HYF,IEF,MSUDF,MDF)

CSC 502 6209 GOLD CREEK 824 (DLF,HYF,IEF,MSUDF,MDF) KT GOLD CREEK 6209 (DLF,HYF,IEF,MSUDF,MDF)
 CRR 824 KELLY 0149 CSC 10Y LADY DEW 502 ET (DLF,HYF,IEF,MSUDF,MDF)
 P44182075 CRR 713 KELLY 0117 (DLF,HYF,IEF,MSUDF,MDF,DBF) CRR 63J KODIAK 713 (DLF,HYF,IEF,MSUDF,MDF,DBF)
 CRR 9B KELLY 521 (D001)(DLF,HYF,IEF,MSUDF,MDF)



- <https://player.vimeo.com/video/1056224712?h=dab737dd99>
- I preach balanced trait selection in our cowherd. This bull embodies this philosophy. He is a Homo Polled, fully pigmented bull with an athletic stride. He has the right kind of muscle and body shape. He stems from a highly productive, problem free cow family. CRR Baldy Maker. Top 1% of CHB Index.

CED	BW	WW	YW	MM	SC	REA	MARB	BMI\$	BII\$	CHB\$
6.0	2.5	66	107	40	1.3	0.79	0.16	532	622	155
	ACT BW	ADJ WW	ADJ YW	Age of Dam	SC	REA	MARB			
	78	673	1241	3	36	13.59	1.90	HOMOZYGOUS POLLED		



462

CRR 156J STEADFAST 462

{DLF,HYF,IEF,MSUDF,MDF,DBF}

P44586022 — Calved: 2/16/24

NJW 79Z Z311 ENDURE 173D ET (S001)(CHB)(DLF,HYF,IEF,MSUDF,MDF,DBF) KCF BENNETT ENCORE Z311 ET (S001)(CHB)(DLF,HYF,IEF,MSUDF,MDF,DBF)
 NJW 202C173DSTEADFAST 156J ET (CHB)(DLF,HYF,IEF,MSUDF,MDF,DBF) BW 91H 100W RITA 79Z ET (DLF,HYF,IEF,MSUDF,MDF)
 P44276463 NJW 160Z 8Y HOME MAKER 202C (DLF,HYF,IEF,MSUDF,MDF,DBF) NJW 735 W18 HOMEGROWN 8Y ET (S001)(DLF,HYF,IEF,MSUDF,MDF,DBF)
 NJW 735 88X DAYDREAM 160Z (D001)(DLF,HYF,IEF,MSUDF,MDF)

SHF IMPACT 001A C63 (DLF,HYF,IEF,MSUDF,MDF) GERBER ANODYNE 001A (S001)(CHB)(DLF,HYF,IEF,MSUDF,MDF,DBF)
 CRR C63 ECLIPSE 754 SHF VICKIE R117 W26 ET (D001)(DLF,HYF,IEF,MSUDF,MDF,DBF)
 P43847138 CRR 719T ECLIPSE 239 (D001) TH 122 711 VICTOR 719T (S001)(DLF,HYF,IEF,MSUDF,MDF,DBF)
 CRR 4037 ECLIPSE 911 (DLF,HYF,IEF,MSUDF,MDF)



- <https://player.vimeo.com/video/1056224729?h=a017fa0ea8>
- A low birthweight, fully pigmented, Homo Polled Baldy Maker. 462 is built for low input operations that are profit driven. Very good udder and teat EPDs and profit indexes.

CED	BW	WW	YW	MM	SC	REA	MARB	BMI\$	BII\$	CHB\$
4.8	1.1	50	71	27	1.0	0.53	0.23	456	533	124
	ACT BW	ADJ WW	ADJ YW	Age of Dam	SC	REA	MARB			
	85	619	1122	7	34	14.22	2.94	HOMOZYGOUS POLLED		

463

CRR 116J ANDY 463

{DLF,HYF,IEF,MSUDEF,MDF,DBF}

P44586193 — Calved: 2/17/24

NJW 792Z311 ENDURE 173D ET (S001)(CHB)(DLF,HYF,IEF,MSUDEF,MDF,DBF) KCF BENNETT ENCORE Z311 ET (S001)(CHB)(DLF,HYF,IEF,MSUDEF,MDF,DBF)
 ASM 801F ODYSSEY 116J (DLF,HYF,IEF,MSUDEF,MDF,DBF) BW 91H 100W RITA 79Z ET (DLF,HYF,IEF,MSUDEF,MDF,DBF)
 P44297398 ASM 705 EDNA 801F ET (MDP,DBF) NJW 135U 10Y HOMETOWN 27A (DLF,HYF,IEF,MSUDEF,MDF,DBF)
 CRR 8Y ECLIPSE 036 (DLF,HYF,IEF,MSUDEF,MDF,DBF) SHF WONDER M326 W18 ET (S001)(CHB)(DLF,HYF,IEF,MSUDEF,MDF,DBF)
 P44184088 CRR 719T ECLIPSE 215 (DLF,HYF,IEF,MSUDEF,MDF,DBF) NJW P606 72N DAYDREAM 73S (DLF,HYF,IEF,MSUDEF,MDF,DBF)
 TH 122 711 VICTOR 719T (S001)(DLF,HYF,IEF,MSUDEF,MDF,DBF)
 CRR 9126J ECLIPSE 731 (D001)(DLF,HYF,IEF,MSUDEF,MDF,DBF)



- <https://player.vimeo.com/video/1056224745?h=d03da4385b>
- A "meat and potatoes" type of bull that is dense bodied, easy fleshing and masculine fronted. He sports exceptional, very balanced EPDs across the board. If you like them moderate and burly, you will appreciate this bull.



CED	BW	WW	YW	MM	SC	REA	MARB	BMI\$	BII\$	CHB\$
6.9	2.2	63	96	36	0.9	0.52	0.25	448	538	159
ACT BW	ADJ WW	ADJ YW	Age of Dam	SC	REA	MARB				
81	653	1200	4	35	13.82	2.85	SCURRED			

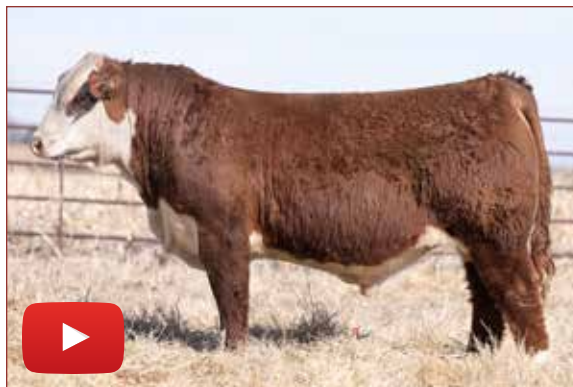
465

CRR 35K LOYAL 465

{DLF,HYF,IEF,MSUDEF,MDF,DBF}

P44586259 — Calved: 2/17/24

PYRAMID CANDOR 9139 (CHB)(DLF,HYF,IEF,MSUDEF,MDF,DBF) SHF DAYBREAK Y02 D28T ET (CHB)(DLF,HYF,IEF,MSUDEF,MDF,DBF)
 NJW 141C 9139 LOYAL 35K (DLF,HYF,IEF,MSUDEF,MDF,DBF) FHF 38Y RITA 197C (D001)(DLF,HYF,IEF,MSUDEF,MDF,DBF)
 P44390850 NJW 161Z 190Z PRAIRIE 141C (DLF,HYF,IEF,MSUDEF,MDF,DBF) NJW 78P TWENTYTWELVE 190Z ET (DLF,HYF,IEF,MSUDEF,MDF,DBF)
 NJW 39S 38W PRAIRIE 161Z (DLF,HYF,IEF,MSUDEF,MDF,DBF)
 NJW LONG HAUL 36E ET (DLF,HYF,IEF,MSUDEF,MDF,DBF) CHURCHILL SENSATION 028X (S001)(DLF,HYF,IEF,MSUDEF,MDF,DBF)
 CRR 36E KELLY 127 (DLF,HYF,IEF,MSUDEF,MDF,DBF) NJW 79Z 10W RITA 11B (DLF,HYF,IEF,MSUDEF,MDF,DBF)
 P44299478 CRR 169A KELLY 668 (MDP) NJW 137S 8Y HOMEGROWN 169A (DLF,HYF,IEF,MSUDEF,MDF,DBF)
 CRR 109 KELLY 415 (DLF,HYF,IEF,MSUDEF,MDF,DBF)



- <https://player.vimeo.com/video/1056224751?h=b10a718b57>
- A very well-built bull with impeccable structure. He is big footed, rugged and has true power from end to end. He is fully pigmented and short marked. His dam has an exceptional udder and is very high quality. Excellent birth-to-yearling EPD spread.



CED	BW	WW	YW	MM	SC	REA	MARB	BMI\$	BII\$	CHB\$
7.2	2.4	65	111	34	1.0	0.66	-0.06	332	400	109
ACT BW	ADJ WW	ADJ YW	Age of Dam	SC	REA	MARB				
81	675	1243	3	34	13.67	2.18	SCURRED			

466

CRR 156J STEADFAST 466

{DLF,HYF,IEF,MSUDEF,MDF,DBF}

P44586261 — Calved: 2/17/24

NJW 79Z311 ENDURE 173D ET (S001)(CHB)(DLF,HYF,IEF,MSUDEF,MDF,DBF) KCF BENNETT ENCORE Z311 ET (S001)(CHB)(DLF,HYF,IEF,MSUDEF,MDF,DBF)
 NJW 202C173DSTEADFAST 156J ET (CHB)(DLF,HYF,IEF,MSUDEF,MDF,DBF) BW 91H 100W RITA 79Z ET (DLF,HYF,IEF,MSUDEF,MDF,DBF)
 P44276463 NJW 160Z 8Y HOME MAKER 202C (DLF,HYF,IEF,MSUDEF,MDF,DBF) NJW 73S W18 HOMEGROWN 8Y ET (S001)(DLF,HYF,IEF,MSUDEF,MDF,DBF)
 NJW 73S 88X DAYDREAM 160Z (D001)(DLF,HYF,IEF,MSUDEF,MDF,DBF)
 NJW 133A 6589 MANIFEST 87G ET (DLF,HYF,IEF,MSUDEF,MDF,DBF) /S MANDATE 66589 ET (DLF,HYF,IEF,MSUDEF,MDF,DBF)
 CRR 87G HONEY 135 BW NJW 76S 8Y HOMESPUN 133A (DLF,HYF,IEF,MSUDEF,MDF,DBF)
 P44302124 CRR 109 HONEY 762 CRR 719 CATAPULT 109 (S001)(DLF,HYF,IEF,MSUDEF,MDF,DBF)
 CRR 100W HONEY 352 ET (D001)



- <https://player.vimeo.com/video/1056224765?h=58c0c6f04a>
- A very complete, problem free, sound structured bull with large, well-shaped testicles. He reads on paper how he is in real life — very balanced in all aspects of cattle production. Full pigment on this guy.



CED	BW	WW	YW	MM	SC	REA	MARB	BMI\$	BII\$	CHB\$
5.7	1.6	58	89	26	1.6	0.60	0.20	486	573	145
ACT BW	ADJ WW	ADJ YW	Age of Dam	SC	REA	MARB				
82	685	1206	3	38	14.30	2.53	SCURRED			



467

CRR 824 CODY 467

{DLF,HYF,IEF,MSUDF,MDF,DBF}

P44586091 — Calved: 2/17/24

KT GOLD CREEK 6209 (DLF,HYF,IEF,MSUDF) GKB 88X LARAMIE B293 (S001)(DLF,HYF,IEF,MDF,DBF)
 CSC 502 6209 GOLD CREEK 824 (DLF,HYF,IEF,MDF) KT MS 44U DURANGO 2167 (D001)(DLF,HYF,IEF,MSUDF)
 P43908780 CSC 10Y LADY DEW 502 ET (DLF,HYF,IEF,MSUDF,MDF) NJW 73S W18 HOMETOWN 10Y ET (S001)(CHB)(DLF,HYF,IEF,MSUDF,MDC)
 CRR 109 CATAPULT 322 (S001)(DLF,HYF,IEF,MSUDF,MDF,DBF) CRR 719 CATAPULT 109 (S001)(DLF,HYF,IEF,MDF)
CRR 322 ECLIPSE 918 (D001) CRR 713 KELLY 0117 (DLF,HYF,IEF)
 P44036759 CRR 028X ECLIPSE 710 (DLF,HYF,IEF,MSUDF) CHURCHILL SENSATION 028X (S001)(DLF,HYF,IEF,MDF,DBF)
 CRR 713 ECLIPSE 5132 (DLP,HYP)



- <https://player.vimeo.com/video/1056224779?h=374a4695b6>
- A big, stout, high performing bull. He indexed very well at weaning weight and yearling weight. This short-marked, big testicled, Homo Polled bull is agile and free moving. His dam is a Dam of Distinction and never disappoints. He will add pounds at weaning and in the feedyard.

CED	BW	WW	YW	MM	SC	REA	MARB	BMI\$	BII\$	CHB\$
-2.1	4.2	69	110	36	1.6	0.38	0.01	405	486	111
	ACT BW	ADJ WW	ADJ YW	Age of Dam	SC	REA	MARB			
	93	739	1286	5	39	13.39	1.63	HOMOZYGOUS POLLED		



468

CRR 107 BALANCE 468

{DLF,HYF,IEF,MSUDF,MDF,DBF}

P44586097 — Calved: 2/17/24

/S MANDATE 66589 ET (DLF,HYF,IEF,MSUDF,MDF,DBF) R LEADER 6964 (S001)(DLF,HYF,IEF,MSUDF,DBF)
CRR 66589 BALANCE 107 (DLF,HYF,IEF,MSUDF,MDF,DBF) /S LADY DOMINO 0158X (DLF,HYF,IEF)
 P44296384 CRR 8Y ECLIPSE 9102 (DLF,HYF,IEF,MSUDF,MDC) NJW 73S W18 HOMEGROWN 8Y ET (S001)(DLF,HYF,IEF,MSUDF,MDC,DBF)
 CRR 109 CATAPULT 322 (S001)(DLF,HYF,IEF,MSUDF,MDF,DBF) CRR 719 CATAPULT 109 (S001)(DLF,HYF,IEF,MDF)
CRR 322 AMBER 964 (DLF,HYF,IEF,MSUDF,MDF,DBF) CRR 713 KELLY 0117 (DLF,HYF,IEF)
 44036785 CRR Z34 AMBER 5106 (DLP,HYP,DBP) SHF MILO W18 Z34 (DLF,HYF,IEF,MDF,DBF)
 CRR 4037 AMBER 809 (DLP,HYP)



- <https://player.vimeo.com/video/1056224800?h=256c45aa8c>
- A highly maternal calving ease bull that moves like a cat. He is designed for longevity and will produce high value replacements. This large scrotal bull has breed character and full pigment. CRR Baldy Maker.

CED	BW	WW	YW	MM	SC	REA	MARB	BMI\$	BII\$	CHB\$
7.9	0.1	62	91	42	1.2	0.42	0.07	386	464	109
	ACT BW	ADJ WW	ADJ YW	Age of Dam	SC	REA	MARB			
	84	695	1182	5	37	11.95	2.41	POLLED		





469 **CRR 116J ANDY 469**
 {DLF,HYF,IEF,MSUDEF,MDF,DBF}

P44585988 — Calved: 2/17/24

NJW 79Z Z311 ENDURE 173D ET (S00)(CHB)(DLF,HYF,IEF,MSUDEF,MDF,DBF)
ASM 801F ODYSSEY 116J (DLF,HYF,IEF,MSUDEF,MDF,DBF)
 P44297398 ASM 70S EDNA 801F ET (MDP,DBP)
 KJ HVH 33N REDEEM 48ST ET (S00)(DLF,HYF,IEF,MDF,DBF)
CRR 485T HONEY 560
 P43589306 CRR 719 HONEY 147

SOLD

KCF BENNETT ENCORE Z311 ET (S00)(CHB)(DLF,HYF,IEF,MSUDEF,MDF,DBF)
 BW 91H 100W RITA 79Z ET (DLF,HYF,IEF,MSUDEF,MDF,DBF)
 NJW 135U 10Y HOMETOWN 27A (DLF,HYF,IEF,MSUDEF,MDF,DBF)
 ASM 122L MISS 70SET (DLF,HYF,IEF,DBP)
 SHFRADAR M326 R12S (S00)(DLF,HYF,IEF)
 HVH OKSANA 4L 33N (DLF,HYF,IEF,DBP)
 TH 122 711 VICTOR 719T (S00)(DLF,HYF,IEF,MSUDEF,MDF,DBF)
 CRR P606 HONEY 531 ET (DLF,HYF,IEF)

- <https://player.vimeo.com/video/1056224820?h=77ea7b51e9>
- Herd Bull Alert.
- A can't miss prospect for cowmen with discriminating tastes but are balance sheet driven. Visually he is a true beef bull: stout, huge middled with shape to burn. This large testicled bull is short marked, well pigmented and moves with ease. His numbers read nearly perfectly from birth all the way to his profit indexes. Top 1% CHB.



CED	BW	WW	YW	MM	SC	REA	MARB	BMI\$	BII\$	CHB\$
7.8	2.0	67	109	31	1.8	0.75	0.33	505	607	173
	ACT BW	ADJ WW	ADJ YW	Age of Dam	SC	REA	MARB			
	84	679	1278	8	41	14.43	3.04			POLLED





472

CRR 35K LOYAL 472

{DLF,HYF,IEF,MSUDF,MDF,DBF}

P44586028 — Calved: 2/18/24

PYRAMID CANDOR 9139 (CHB){DLF,HYF,IEF,MSUDF,MDF} SHF DAYBREAK Y02 D287 ET (CHB){DLF,HYF,IEF,MSUDF,MDF}
 NJW 141C 9139 LOYAL 35K (DLF,HYF,IEF,MSUDF,MDF,DBF) FHF 38Y RITA 197C (DOD){DLF,HYF,IEF,MSUDF,MDF}
 P44390850 NJW 161Z 190Z PRAIRIE 141C (DLF,HYF,IEF,MSUDF,MDF) NJW 78P TWENTYTWELVE 190Z ET (DLF,HYF,IEF,MSUDF,MDF)
 NJW 39S 38W PRAIRIE 161Z (DLF,HYF,IEF,MSUDF,MDF)

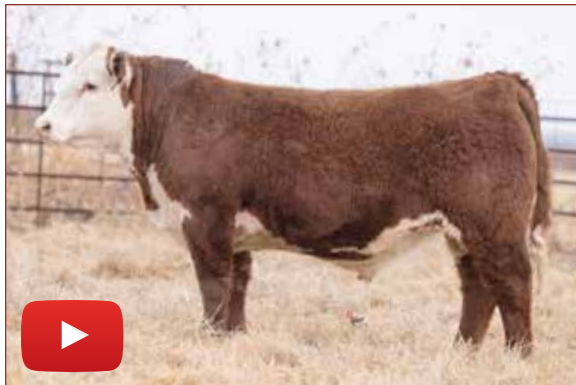
CRR 109 CATAPULT 322 (SOD){DLF,HYF,IEF,MSUDF,MDF,DBF} CRR 719 CATAPULT 109 (SOD){DLF,HYF,IEF,MSUDF,MDF}
 CRR 322 AMBER 806 (DOD){HYF} CRR 713 KELLY 0117 (DLF,HYF,IEF,MSUDF,MDF)
 P43950199 CRR 427 AMBER 602 (DOD){HYF} CRR 156T MR MATERNAL 427 (DLF,HYF,IEF,MSUDF,MDF)
 CRR 021 AMBER 2102 (HYF)

SOLD

- <https://player.vimeo.com/video/1056224835?h=ede0ead3d0>
- A big middled, high capacity bull who is moderate in his design and easy fleshing. This rugged built bull is out of a DOD dam who is truly stout, massive and is one of our best producers. Homo Polled with full pigment.



CED	BW	WW	YW	MM	SC	REA	MARB	BMI\$	BII\$	CHB\$
2.9	3.2	54	95	29	1.0	0.62	0.03	349	414	102
	ACT BW	ADJ WW	ADJ YW	Age of Dam	SC	REA	MARB			
	90	684	1250	6	36	14.77	2.17	HOMOZYGOUS POLLED		



478

CRR 156J STEADFAST 478

{DLF,HYF,IEF,MSUDF,MDF,DBF}

P44586332 — Calved: 2/18/24

NJW 79Z Z311 ENDURE 173D ET (SOD){CHB}{DLF,HYF,IEF,MSUDF,MDF,DBF} KCF BENNETT ENCORE Z311 ET (SOD){CHB}{DLF,HYF,IEF,MSUDF,MDF,DBF}
 NJW 202C173D STEADFAST 156J ET (CHB){DLF,HYF,IEF,MSUDF,MDF,DBF} BW 91H 100W RITA 79Z ET (DLF,HYF,IEF,MSUDF,MDF)
 P44276463 NJW 160Z 8Y HOME MAKER 202C (DLF,HYF,IEF,MSUDF,MDF,DBF) NJW 73S W18 HOMEGROWN 8Y ET (SOD){DLF,HYF,IEF,MSUDF,MDF,DBF}
 NJW 73S 88X DAYDREAM 160Z (DOD){DLF,HYF,IEF,MSUDF,MDF}

CSC 502 6209 GOLD CREEK 824 (DLF,HYF,IEF,MSUDF) KT GOLD CREEK 6209 (DLF,HYF,IEF,MSUDF)
 CRR 824 ECLIPSE 0124 CSC 10Y LADY DEW 502 ET (DLF,HYF,IEF,MSUDF,MDF)
 P44182062 CRR 028X ECLIPSE 706 (DLF,HYF,IEF,MSUDF) CHURCHILL SENSATION 028X (SOD){DLF,HYF,IEF,MSUDF,MDF,DBF}
 CRR 367 ECLIPSE 564 (HYF)

SOLD

- <https://player.vimeo.com/video/1056224555?h=a250f5961e>
- A Homo Polled, fully pigmented bull that is heifer-safe and highly maternal. He's a big-topped, thick quartered bull that is soft middled and great in his forerib. He has a large, well-shaped scrotum. I could write a book about his cow family, but I'll keep it short – they are the best uddered, highest quality females on the ranch.



CED	BW	WW	YW	MM	SC	REA	MARB	BMI\$	BII\$	CHB\$
9.1	0.5	59	92	42	1.7	0.94	0.15	511	592	160
	ACT BW	ADJ WW	ADJ YW	Age of Dam	SC	REA	MARB			
	75	666	1199	3	38	13.76	2.34	HOMOZYGOUS POLLED		





479 **CRR 156J AFFINITY 479**
 {DLF,HYF,IEF,MSUDF,MDF,DBF}

P44586195— Calved: 2/18/24

NJW 79Z Z311 ENDURE 173D ET {S00}{CHB}{DLF,HYF,IEF,MSUDF,MDF,DBF}
 NJW 202C173DSTEADFAST 156J ET {CHB}{DLF,HYF,IEF,MSUDF,MDF,DBF}
 P44276463 NJW 160Z 8Y HOME MAKER 202C {DLF,HYF,IEF,MSUDF,MDC,DBF}

KCF BENNETT ENCORE Z311 ET {S00}{CHB}{DLF,HYF,IEF,MSUDF,MDF,DBF}
 BW 91H 100W RITA 79Z ET {DLF,HYF,IEF,MSUDF,MDF}
 NJW 73S W18 HOMEGROWN 8Y ET {S00}{DLF,HYF,IEF,MSUDF,MDC,DBF}
 NJW 73S 88X DAYDREAM 160Z {D00}{DLF,HYF,IEF,MSUDF,MDF}

- <https://player.vimeo.com/video/1056224854?h=9618783baa>
- Herd Bull Alert.
- This Denver Pen bull covers all the bases. On paper he reads exceptionally well in every measured trait. Excellent birth to yearling spread with indexes in the top 1% of the breed. Visually he is a thick ended powerhouse that is built right from any angle. His extreme length and rib shape are phenomenal. Visitors have loved his DOD dam and some very astute cowmen consider her to be our best.

/S MANDATE 66589 ET {DLF,HYF,IEF,MSUDF,MDF,DBF}
 CRR 6589 HONEY 039 {DLF,HYF,IEF,MSUDF,MDC,DBF}
 44184134 CRR 109 HONEY 741

R LEADER 6964 {S00}{DLF,HYF,IEF,MSUDF,DBF}
 /S LADY DOMINO 0158X {DLF,HYF,IEF}
 CRR 719 CATAPULT 109 {S00}{DLF,HYF,IEF,MDF}
 CRR 63J HONEY 801 {DLF,HYF,IEF}

SOLD



CED	BW	WW	YW	MM	SC	REA	MARB	BMI\$	BIIS	CHBS
4.1	2.1	72	123	35	1.6	1.03	0.34	523	630	185
ACT BW		ADJ WW	ADJ YW	Age of Dam	SC	REA	MARB	SCURRED		
82		735	1335	4	37	14.77	3.07			





480 **CRR 35K LOYAL 480**
 {DLF,HYF,IEF,MSUDF,MDF,DBF}

P44586011— Calved: 2/18/24

PYRAMID CANDOR 9139 {CHB}{DLF,HYF,IEF,MSUDF,MDF}
NJW 141C 9139 LOYAL 35K {DLF,HYF,IEF,MSUDF,MDF,DBF}
 P44390850 NJW 161Z 190Z PRAIRIE 141C {DLF,HYF,IEF,MSUDF}

SHF DAYBREAK Y02 D287 ET {CHB}{DLF,HYF,IEF,MSUDF}
 FHF 38Y RITA 197C {DOD}{DLF,HYF,IEF,MSUDF}
 NJW 78P TWENTYWELVE 190Z ET {DLF,HYF,IEF}
 NJW 39S 38W PRAIRIE 161Z {DLF,HYF,IEF,MSUDF,MDF}

- <https://player.vimeo.com/video/1056224869?h=245c318272>
- Herd Bull Alert.
- A uniquely bred bull with a tremendous design. He has the power, structure, and quality we strive for. This masculine bull has a great foot and a ground eating stride. He has the mass and maternal heritage to build cowherds. His Dam of Distinction is a prolific producer and very easy on the eyes. He will be a valuable asset to any breeding program.

CHURCHILL SENSATION 028X {SOD}{DLF,HYF,IEF,MSUDF,MDF,DBF}
CRR 028X KELLY 721 {DOD}{DLF,HYF,IEF,MSUDF,MDF,DBF}
 P43846898 CRR 369 KELLY 5129

UPS DOMINO 3027 {SOD}{CHB}{DLF,HYF,IEF,MSUDF,MDF}
 CHURCHILL LADY 7202T ET {DLF,HYF,IEF}
 CRR 109 CATAPULT 369 {DLF,HYF,IEF}
 CRR 713 KELLY 0117 {DLF,HYF,IEF}



CED	BW	WW	YW	MM	SC	REA	MARB	BMI\$	BII\$	CHB\$
7.4	2.1	60	99	32	1.0	0.38	0.09	452	534	116
	ACT BW	ADJ WW	ADJ YW	Age of Dam	SC	REA	MARB			
	87	724	1242	7	36	14.23	1.80	SCURRED		



481

CRR 156J STEADFAST 481

{DLF,HYF,IEF,MSUDEF,MDF,DBF}

P44585976 — Calved: 2/18/24

NJW 79Z Z311 ENDURE 173D ET (S001)(CHB)(DLF,HYF,IEF,MSUDEF,MDF,DBF) KCF BENNETT ENCORE Z311 ET (S001)(CHB)(DLF,HYF,IEF,MSUDEF,MDF,DBF)
NJW 202C173D STEADFAST 156J ET (CHB)(DLF,HYF,IEF,MSUDEF,MDF,DBF) BW 91H 100W RITA 79Z ET (DLF,HYF,IEF,MSUDEF,MDF)
 P44276463 NJW 160Z 8Y HOME MAKER 202C (DLF,HYF,IEF,MSUDEF,MDF,DBF) NJW 73S W18 HOMEGROWN 8Y ET (S001)(DLF,HYF,IEF,MSUDEF,MDF,DBF)
 NJW 73S 88X DAYDREAM 160Z (D001)(DLF,HYF,IEF,MSUDEF,MDF)

NJW FHF 9710 TANK 45P (S001)(DLF,HYF,IEF,MDF) FHF 8403 STARBUCK 19H (S001)
CRR 45P AMBER 476 ET GV 579 VICTORIA 9710 (DLF,HYF,IEF)
 P43483261 CRR D03 AMBER 549 (DLF,HYF,IEF) SHF INTERSTATE 20X D03 (S001)(DLF,HYF,IEF,MDF)
 CRR 766 AMBER 953 (HYF)



- <https://player.vimeo.com/video/1056224887?h=00106c53eb>
- This stout built, heavily muscled bull is moderate, sound moving and short marked. If you're in tough country and demand durable, problem-free cattle that are optimum in their mature size, consider this guy. He is excellent in his profit indexes. His 9-year-old dam is a ranch favorite and has contributed to the success and productivity of our cowherd.



CED	BW	WW	YW	MM	SC	REA	MARB	BMI\$	BII\$	CHB\$
2.1	2.2	52	80	30	0.6	0.89	0.25	459	538	148
ACT BW		ADJ WW	ADJ YW	Age of Dam	SC	REA	MARB			
83		627	1104	9	36	14.45	2.87	POLLED		

484

CRR 107 SOURCE 484

{DLF,HYF,IEF,MSUDEF,MDF,DBF}

P44586263 — Calved: 2/18/24

/S MANDATE 66589 ET (DLF,HYF,IEF,MSUDEF,MDF,DBF) R LEADER 6964 (S001)(DLF,HYF,IEF,MSUDEF,MDF,DBF)
CRR 66589 BALANCE 107 (DLF,HYF,IEF,MSUDEF,MDF,DBF) /S LADY DOMINO 0158X (DLF,HYF,IEF)
 P44296384 CRR 8Y ECLIPSE 910Z (DLF,HYF,IEF,MSUDEF,MDF,DBF) NJW 73S W18 HOMEGROWN 8Y ET (S001)(DLF,HYF,IEF,MSUDEF,MDF,DBF)
 CRR 021 ECLIPSE 281 (D001)(DLF,HYF)

NJW 73S W18 HOMEGROWN 8Y ET (S001)(DLF,HYF,IEF,MSUDEF,MDF,DBF) SHF WONDER M326 W18 ET (S001)(CHB)(DLF,HYF,IEF,MDF,DBF)
CRR 8Y ECLIPSE 143 (DLF,HYF,IEF,MSUDEF,MDF) NJW P606 72N DAYDREAM 73S (DLF,HYF,IEF,MSUDEF,MDF,DBF)
 P44299476 CRR 88X ECLIPSE 522 NJW 985 R117 RIBEYE 88X ET (S001)(DLF,HYF,IEF,MSUDEF,MDF,DBF)
 CRR 4037 ECLIPSE 808 (DLF,HYF,IEF)



- <https://player.vimeo.com/video/1056224904?h=83cafe252>
- A goggle-eyed short marked bull that is balanced on paper and has the power, shape, and quality to make your neighbor jealous. He's stout and massive from end to end and moves with a long free stride. His dam is the female replica of 484. The right size, broody, big hipped and very tight uddered.



CED	BW	WW	YW	MM	SC	REA	MARB	BMI\$	BII\$	CHB\$
6.2	2.0	63	92	34	1.0	0.37	0.11	347	426	116
ACT BW		ADJ WW	ADJ YW	Age of Dam	SC	REA	MARB			
80		708	1199	3	34	15.64	2.43	POLLED		

486

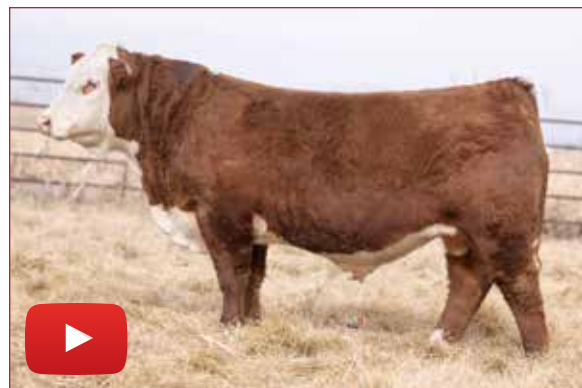
CRR 35K LOYAL 486

{DLF,HYF,IEF,MSUDEF,MDF,DBF}

P44586325 — Calved: 2/18/24

PYRAMID CANDOR 9139 (CHB)(DLF,HYF,IEF,MSUDEF,MDF) SHF DAYBREAK Y02 D287 ET (CHB)(DLF,HYF,IEF,MSUDEF)
NJW 141C 9139 LOYAL 35K (DLF,HYF,IEF,MSUDEF,MDF,DBF) FHF 38Y RITA 197C (D001)(DLF,HYF,IEF,MSUDEF)
 P44390850 NJW 161Z 190Z PRAIRIE 141C (DLF,HYF,IEF,MSUDEF) NJW 78P TWENTYTWELVE 190Z ET (DLF,HYF,IEF)
 NJW 39S 38W PRAIRIE 161Z (DLF,HYF,IEF,MSUDEF,MDF)

CRR 109 UPSLOPE 611 ET (DLF,HYF,IEF,MSUDEF,MDF) CRR 719 CATAPULT 109 (S001)(DLF,HYF,IEF,MDF)
CRR 611 HONEY 9109 (D001)(HYF) CRR 435 KELLY 178 (D001)(DLF,HYF,IEF)
 P44036063 CRR 713 HONEY 365 (HYF) CRR 63J KODIAK 713 (DLF,HYF,IEF)
 CRR 552 HONEY 619 (DLF,HYF,IEF)



- <https://player.vimeo.com/video/1056224923?h=d077cfcc2a>
- A short marked CRR Baldy Maker who is out of a DOD dam that always does her job. He's built for the long haul as 486 is great structured, good footed and easy keeping. A low input calving ease bull with enough performance to have the versatility to use on cows or heifers.



CED	BW	WW	YW	MM	SC	REA	MARB	BMI\$	BII\$	CHB\$
12.2	-1.5	44	84	31	1.1	0.29	0.29	437	516	122
ACT BW		ADJ WW	ADJ YW	Age of Dam	SC	REA	MARB			
68		648	1212	4	37	12.55	2.76	SCURRED		



490

CRR 018 ASTUTE 490

{DLF,HYF,IEF,MSUDF,MDF,DBF}

P44586282— Calved: 2/19/24

NJW 735 W18 HOMEGROWN 8Y ET {SOD}{DLF,HYF,IEF,MSUDF,MDF,DBF} SHF WONDER M326 W18 ET {SOD}{CHB}{DLF,HYF,IEF,MDC,DBF}
CRR 8Y ASTUTE 018 {DLF,HYF,IEF,MSUDF,MDF} NJW P606 72N DAYDREAM 73S {DLF,HYF,IEF,MSUDF,MDF}
 P44184093 CRR 028X HONEY 505 CHURCHILL SENSATION 028X {SOD}{DLF,HYF,IEF,MDF,DBF}
 CRR 100W HONEY 357 ET
 JDH AH PROMINENT 21G ET {CHB}{DLF,HYF,IEF,MSUDF,MDF,DBF} JDH 118 STUD 3134 63E {CHB}{DLF,HYF,IEF,MSUDF,MDF,DBF}
CRR 21G ECLIPSE 230 JDH AH MS 34X VICTOR 33Z45C ET {DLF,HYF,IEF,MSUDF}
 P44405153 CRR 322 ECLIPSE 639 CRR 109 CATAPULT 322 {SOD}{DLF,HYF,IEF,MSUDF,MDF,DBF}
 CRR 63N ECLIPSE 914 {DOD}{DLF,HYF,IEF,MSUDF}

- <https://player.vimeo.com/video/1056224938?h=b5fb73d8d5>
- A true power bull with a balanced set of EPDs. A moderate birth, high weaning bull with good profit indexes. This bull is stout, has an abundance of muscle shape and is designed as correctly as you can make one. Watch his video to truly appreciate what he can do for your calf crop.



CED	BW	WW	YW	MM	SC	REA	MARB	BMI\$	BII\$	CHB\$
6.2	2.4	58	92	32	1.1	0.54	0.23	462	547	138
	ACT BW	ADJ WW	ADJ YW	Age of Dam	SC	REA	MARB			
	72	724	1182	2	37	13.40	2.75	SCURRED		





491 **CRR 824 HAMMER 491**
 {DLF,HYF,IEF,MSUDF,MDF,DBF}

P44586096 — Calved: 2/20/24

KT GOLD CREEK 6209 (DLF,HYF,IEF,MSUDF)
CSC 502 6209 GOLD CREEK 824 (DLF,HYF,IEF,MDF)
 P43908780 CSC 10Y LADY DEW 502 ET (DLF,HYF,IEF,MSUDF,MDF)
 (DLF,HYF,IEF,MSUDF,MDC)

NJW 73S W18 HOMEGROWN 8Y ET (SOD)(DLF,HYF,IEF,MSUDF,MDC,DBF)
CRR 8Y ECLIPSE 957 (DLF,HYF,IEF,MSUDF,MDC)
 P44073980 CRR 719T ECLIPSE 215 (DLF,HYF,IEF,MSUDF)

GKB 88X LARAMIE B293 (SOD)(DLF,HYF,IEF,MDF,DBF)
 KT MS 44U DURANGO 2167 (DOD)(DLF,HYF,IEF,MSUDF)
 NJW 73S W18 HOMETOWN 10Y ET (SOD)(CHB)
 NJW 5M 4037 DEW 185W ET (DOD)(DLF,HYF,IEF)

SHE WONDER M326 W18 ET (SOD)(CHB)(DLF,HYF,IEF,MDC,DBF)
 NJW P606 72N DAYDREAM 73S (DLF,HYF,IEF,MSUDF,MDF)
 TH 122 71I VICTOR 719T (SOD)(DLF,HYF,IEF,MSUDF,MDF,DBF)
 CRR 9126J ECLIPSE 731 (DOD)(DLF,HYF,IEF,MSUDF)

- <https://player.vimeo.com/video/1056224962?h=10afe747de>
- Herd Bull Alert.
- A "Cody" son who was a member of our Denver Pen. A true replica of his sire "Cody" who has made his mark at CRR. This long spined powerfully built bull has true skeletal width and shape from any vantage point. Dark red and freckle faced. I predict 491 will be a cow maker that also sires high performance sons. His dam is one of my all-time favorites. She's broody, solid uddered and stout hipped. Quality, performance and maternal in one package.

SOLD



CED	BW	WW	YW	MM	SC	REA	MARB	BMI\$	BII\$	CHB\$
2.4	3.1	64	104	32	1.4	0.38	-0.10	343	409	100
	ACT BW	ADJ WW	ADJ YW	Age of Dam	SC	REA	MARB			
	89	711	1318	5	38	13.08	2.52	SCURRED		





494

CRR 156J STEADFAST 494

{DLF,HYF,IEF,MSUDF,MDF,DBF}

P44586329 — Calved: 2/21/24

NJW 79Z Z311 ENDURE 173D ET (S001)(CHB)(DLF,HYF,IEF,MSUDF,MDF,DBF) KCF BENNETT ENCORE Z311 ET (S001)(CHB)(DLF,HYF,IEF,MSUDF,MDF,DBF)
 NJW 202C173DSTEADFAST 156J ET (CHB)(DLF,HYF,IEF,MSUDF,MDF,DBF) BW 91H 100W RITA 79Z ET (DLF,HYF,IEF,MSUDF,MDF)
 P44276463 NJW 160Z 8Y HOME MAKER 202C (DLF,HYF,IEF,MSUDF,MDF,DBF) NJW 735 W18 HOMEGROWN 8Y ET (S001)(DLF,HYF,IEF,MSUDF,MDF,DBF)
 SR BEEF OPTIMAN 1466 (CHB)(DLF,HYF,IEF,MDF) NJW 735 88X DAYDREAM 160Z (D001)(DLF,HYF,IEF,MSUDF,MDF)
 CRR 466 AMBER 0112 (DLF,HYF,IEF,MSUDF,MDF,DBF) BW SW 38W BEEF 172Z (DLF,HYF,IEF)
 P44182072 CRR 511 AMBER 733 SR RW2 OPTIMAID 0808 (DLF,HYF,IEF)
 CRR 028X SCREENSHOT 511 (DLF,HYF,IEF,MSUDF) CRR 322 AMBER 517

- <https://player.vimeo.com/video/1056224975?h=78a7ac210b>
- A CRR Baldy Maker with optimum EPDs across the board. Short marked, heavy pigment and the kind of design, body shape and mass we breed for. Keep his daughters and retain ownership on his sons! His dam is a cowman's dream: she's productive, problem-free and high-quality.



CED	BW	WW	YW	MM	SC	REA	MARB	BMI\$	BII\$	CHB\$
5.8	2.0	60	88	34	1.1	0.69	0.22	559	650	138
	ACT BW	ADJ WW	ADJ YW	Age of Dam	SC	REA	MARB			
	86	707	1209	3	37	14.57	3.17			SCURRED



496

CRR 35K LOYAL 496

{DLF,HYF,IEF,MSUDF,MDF,DBF}

P44586110 — Calved: 2/22/24

PYRAMID CANDOR 9139 (CHB)(DLF,HYF,IEF,MSUDF,MDF) SHF DAYBREAK Y02 D287 ET (CHB)(DLF,HYF,IEF,MSUDF)
 NJW 141C 9139 LOYAL 35K (DLF,HYF,IEF,MSUDF,MDF,DBF) FHF 38Y RITA 197C (D001)(DLF,HYF,IEF,MSUDF)
 P44390850 NJW 161Z 190Z PRAIRIE 141C (DLF,HYF,IEF,MSUDF) NJW 78P TWENTYTWELVE 190Z ET (DLF,HYF,IEF)
 CRR 109 CATAPULT 322 (S001)(DLF,HYF,IEF,MSUDF,MDF,DBF) CRR 719 CATAPULT 109 (S001)(DLF,HYF,IEF,MDF)
 CRR 322 VIOLET 979 (D001)(HYPP) CRR 713 KELLY 0117 (DLF,HYF,IEF)
 P44036045 CRR 980 VIOLET 245 (HYPP) CRR HELTON 980 (S001)(DLF,HYF,IEF)
 CRR 63J VIOLET 623 (D001)(HYPP)

- <https://player.vimeo.com/video/1056224992?h=fac819b6de>
- A great testicled Homo Polled bull that is very balanced in his EPD profile. He is a long bodied, moderate framed bull that is masculine and exhibits muscle shape and mass. A true stockman's kind of bull.



CED	BW	WW	YW	MM	SC	REA	MARB	BMI\$	BII\$	CHB\$
0.5	3.2	53	83	26	1.2	0.60	0.24	394	473	122
	ACT BW	ADJ WW	ADJ YW	Age of Dam	SC	REA	MARB			
	92	701	1194	5	38	13.98	2.11			HOMOZYGOUS POLLED



4100

CRR 156J STEADFAST 4100

{DLF,HYF,IEF,MSUDF,MDF,DBF}

P44585944 — Calved: 2/22/24

NJW 79Z Z311 ENDURE 173D ET (S001)(CHB)(DLF,HYF,IEF,MSUDF,MDF,DBF) KCF BENNETT ENCORE Z311 ET (S001)(CHB)(DLF,HYF,IEF,MSUDF,MDF,DBF)
 NJW 202C173DSTEADFAST 156J ET (CHB)(DLF,HYF,IEF,MSUDF,MDF,DBF) BW 91H 100W RITA 79Z ET (DLF,HYF,IEF,MSUDF,MDF)
 P44276463 NJW 160Z 8Y HOME MAKER 202C (DLF,HYF,IEF,MSUDF,MDF,DBF) NJW 735 W18 HOMEGROWN 8Y ET (S001)(DLF,HYF,IEF,MSUDF,MDF,DBF)
 SR BEEF OPTIMAN 1466 (CHB)(DLF,HYF,IEF,MDF) NJW 735 88X DAYDREAM 160Z (D001)(DLF,HYF,IEF,MSUDF,MDF)
 CRR 719 CATAPULT 109 (S001)(DLF,HYF,IEF,MDF) TH 122711 VICTOR 719T (S001)(DLF,HYF,IEF,MSUDF,MDF,DBF)
 CRR 109 DONNA 438 (HYPP) CRR 4037 ECLIPSE 808 (DLF,HYF,IEF)
 P43483018 CRR 713 DONNA 221 (HYPP) CRR 63J KODIAK 713 (DLF,HYF,IEF)
 CRR 63N DONNA 047

- <https://player.vimeo.com/video/1056225024?h=941d27dc02>
- A Homo Polled calving ease bull that is deep, soggy middled and efficient in his makeup. This loose structured, big footed bull is tight sheathed and large testicled. His 11-year-old dam is hard working and problem free.



CED	BW	WW	YW	MM	SC	REA	MARB	BMI\$	BII\$	CHB\$
9.7	0.5	58	93	33	1.7	0.73	0.17	488	570	155
	ACT BW	ADJ WW	ADJ YW	Age of Dam	SC	REA	MARB			
	81	700	1208	10	39	13.68	2.16			HOMOZYGOUS POLLED

4105

CRR 1443 LONG HAUL 4105 ET

{DLF,HYF,IEF,MSUDEF,MDF,DBF}

P44586450 — Calved: 2/24/24

NJW LONG HAUL 36E ET {DLF,HYF,IEF,MSUDEF,MDF,DBF}
 /S LONG HAUL 11443 {DLF,HYF,IEF,MSUDEF,MDF,DBF}
 P44311362 SFCC TRM MADDIE 9192 {DLF,HYF,IEF,MSUDEF,MDC}

CHURCHILL SENSATION Q28X {SOD}{DLF,HYF,IEF,MDF,DBF}
 NJW 792 10W RITA 11B {DLF,HYF,IEF,MSUDEF,MDF}
 /S MANDATE 66589 ET {DLF,HYF,IEF,MSUDEF,MDF,DBF}
 SECCTRM ADDIE 7077 {DLF,HYF,IEF,MDF}

CRR 322 CATAPULT 910 {DLF,HYF,IEF,MSUDEF}

CRR 109 CATAPULT 322 {SOD}{DLF,HYF,IEF,MSUDEF,MDF,DBF}

CRR 216 JULIA 190 {DLF,HYF,IEF,MSUDEF,MDF,DBF}

CRR 028X ECLIPSE 706 {DLF,HYF,IEF,MSUDEF}

P44299475 CRR 8Y JULIA 793 ET {DOD}{DLF,HYF,IEF,MSUDEF,MDF}

NJW 735 W18 HOMEGROWN 8Y ET {SOD}{DLF,HYF,IEF,MSUDEF,MDC,DBF}

CRR 719T JULIA 206 {DLF,HYF,IEF,MSUDEF}



- <https://player.vimeo.com/video/1056225033?h=80b5b94590>
- A Homo Polled, short marked, heavily pigmented, heifers safe bull. This athletic moving, big country bull is long bodied and full of red meat. Great birth to yearling spread with good profit indexes. His dam was one of our favorite and highest producing young cows.



CED	BW	WW	YW	MM	SC	REA	MARB	BMI\$	BII\$	CHB\$
7.0	-0.2	67	109	39	1.2	0.91	-0.02	426	501	137
ACT BW		ADJ WW	ADJ YW	Age of Dam	SC	REA	MARB			
82		720	1172	3	34	13.05	2.21	HOMOZYGOUS POLLED		

4107

CRR 824 ELEMENT 4107

{DLF,HYF,IEF,MSUDEF,MDF,DBF}

P44586030 — Calved: 2/24/24

KT GOLD CREEK 6209 {DLF,HYF,IEF,MSUDEF}
 CSC 502 6209 GOLD CREEK 824 {DLF,HYF,IEF,MDF}
 P43908780 CSC 10Y LADY DEW 502 ET {DLF,HYF,IEF,MSUDEF,MDF}

GKB 88X LARAMIE B293 {SOD}{DLF,HYF,IEF,MDF,DBF}
 KT MS 44U DURANGO 2167 {DOD}{DLF,HYF,IEF,MSUDEF}
 NJW 735 W18 HOMETOWN 10Y ET {SOD}{CHB}{DLF,HYF,IEF,MSUDEF,MDC}
 NJW 5M 4037 DEW 185W ET {DOD}{DLF,HYF,IEF}

CHURCHILL SENSATION Q28X {SOD}{DLF,HYF,IEF,MDF,DBF}

UPS DOMINO 3027 {SOD}{CHB}{DLF,HYF,IEF,MSUDEF,MDF}

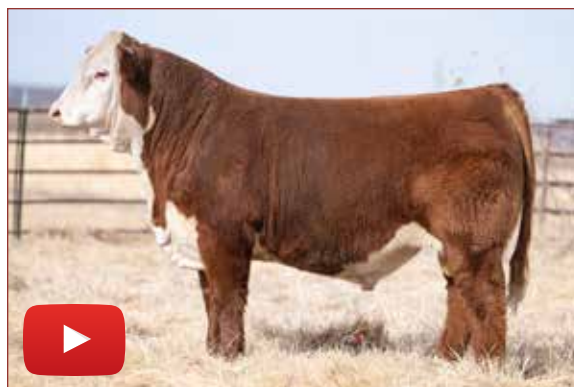
CRR 028X DEAN 824 {DLF,HYF,IEF,MSUDEF,MDF,DBF}

CHURCHILL LADY 7202T ET {DLF,HYF,IEF}

43950221 CRR 367 DEAN 656 {DLP,HYP}

CRR 100W TRUST 367 ET {CHB}{DLF,HYF,IEF}

CRR 713 DEAN 364 {DLP,HYP}



- <https://player.vimeo.com/video/1056225044?h=ae46cb58af>
- Denver Pen bull member. This very sound structured, high performing bull is loaded with quality and breed character. His maternal pedigree is one of our best. His dam is one of the most irreplaceable cows in our herd. She always produces at the highest level. A true female maker!



CED	BW	WW	YW	MM	SC	REA	MARB	BMI\$	BII\$	CHB\$
3.3	2.5	56	97	35	1.6	0.60	-0.03	402	465	110
ACT BW		ADJ WW	ADJ YW	Age of Dam	SC	REA	MARB			
82		716	1308	6	39	14.98	2.76	SCURRED		

4108

CRR 107 BALANCE 4108

{DLF,HYF,IEF,MSUDEF,MDF,DBF}

P44585978 — Calved: 2/24/24

/S MANDATE 66589 ET {DLF,HYF,IEF,MSUDEF,MDF,DBF}
 CRR 66589 BALANCE 107 {DLF,HYF,IEF,MSUDEF,MDF,DBF}
 P44296384 CRR 8Y ECLIPSE 9102 {DLF,HYF,IEF,MSUDEF,MDC}

R LEADER 6964 {SOD}{DLF,HYF,IEF,MSUDEF,DBF}
 /S LADY DOMINO 0158X {DLF,HYF,IEF}
 NJW 735 W18 HOMEGROWN 8Y ET {SOD}{DLF,HYF,IEF,MSUDEF,MDC,DBF}
 CRR 021 ECLIPSE 281 {DOD}{DLP,HYP}

CRR 109 CATAPULT 322 {SOD}{DLF,HYF,IEF,MSUDEF,MDF,DBF}

CRR 719 CATAPULT 109 {SOD}{DLF,HYF,IEF,MDF}

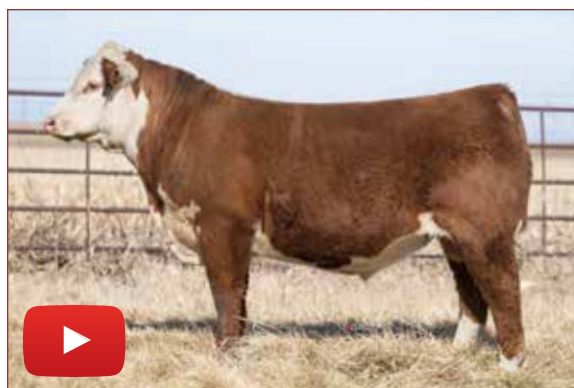
CRR 322 AMBER 517

CRR 713 KELLY 0117 {DLF,HYF,IEF}

P43589391 CRR 713 AMBER 396 {DLF,HYF,IEF,MSUDEF}

CRR 63J KODIAK 713 {DLF,HYP,IEF}

CRR 611 AMBER 872 {DLF,HYF,IEF}



- <https://player.vimeo.com/video/1056225050?h=1fe2117fed>
- One of the "sleepers" in this years' offering. He is stout, good structured and big testicled. He's Homo Polled, short marked and fully pigmented. His ten-year-old dam is moderate, sound and built like a Mack truck. Very balanced EPDs and indexes.



CED	BW	WW	YW	MM	SC	REA	MARB	BMI\$	BII\$	CHB\$
-0.9	2.9	63	102	29	1.7	0.59	0.20	416	504	135
ACT BW		ADJ WW	ADJ YW	Age of Dam	SC	REA	MARB			
93		620	1166	9	38	14.38	2.21	HOMOZYGOUS POLLED		



4110

CRR 018 ASTUTE 4110

{DLF,HYF,IEF,MSUDF,MDF,DBF}

P44586319 — Calved: 2/24/24

NJW 735 W18 HOMEGROWN 8Y ET (SOD)(DLF,HYF,IEF,MSUDF,MDC,DBF) SHF WONDER M326 W18 ET (SOD)(CHB)(DLF,HYF,IEF,MDC,DBF)
CRR 8Y ASTUTE 018 (DLF,HYF,IEF,MSUDF,MDF) NJW P606 72N DAYDREAM 73S (DLF,HYF,IEF,MSUDF,MDF)
 P44184093 CRR 028X HONEY 50S CHURCHILL SENSATION 028X (SOD)(DLF,HYF,IEF,MDF,DBF)
 CRR 100W HONEY 357 ET
 CRR 109 UPSLOPE 611 ET (DLF,HYF,IEF,MSUDF,MDF) CRR 719 CATAPULT 109 (SOD)(DLF,HYF,IEF,MDF)
CRR 611 ECLIPSE 8103 (DLF,HYP) CRR 435 KELLY 178 (DOD)(DLF,HYF,IEF)
 P43950134 CRR 200Z ECLIPSE 443 (DOD)(DLF,HYP) CHURCHILL RED BULL 200Z (SOD)(DLF,HYF,IEF,MSUDF,MDF,DBF)
 CRR 021 ECLIPSE 281 (DOD)(DLF,HYP)

SOLD

- <https://player.vimeo.com/video/1056225054?h=1a68b7aaa0>
- A square built, long spined, heavy muscled bull that is the "Rancher's kind". He is a densely constructed bull that will add performance and quality to his calf crops. His dam is one of our most consistent producers. Quality and power!



CED	BW	WW	YW	MM	SC	REA	MARB	BMI\$	BII\$	CHB\$
1.1	3.1	59	98	35	1.3	0.38	0.02	350	418	125
	ACT BW	ADJ WW	ADJ YW	Age of Dam	SC	REA	MARB			
	92	652	1198	6	37	13.25	2.03			POLLED



4113

CRR 1443 LONG HAUL 4113 ET

{DLF,HYF,IEF,MSUDF,MDF,DBF}

P44586449 — Calved: 2/26/24

NJW LONG HAUL 36E ET (DLF,HYF,IEF,MSUDF,MDC,DBF) CHURCHILL SENSATION 028X (SOD)(DLF,HYF,IEF,MDF,DBF)
/S LONG HAUL 11443 (DLF,HYF,IEF,MSUDF,MDC,DBF) NJW 79Z 10W RITA 11B (DLF,HYF,IEF,MSUDF,MDF)
 P44311362 SFCC TRM MADDIE 9192 (DLF,HYF,IEF,MSUDF,MDC) /S MANDATE 66589 ET (DLF,HYF,IEF,MSUDF,MDC,DBF)
 CRR 322 CATAPULT 910 (DLF,HYF,IEF,MSUDF) SECCTRM ADDIE 7077 (DLF,HYF,IEF,MDF)
CRR 21G JULIA 190 (DLF,HYF,IEF,MSUDF,MDC,DBF) CRR 109 CATAPULT 322 (SOD)(DLF,HYF,IEF,MSUDF,MDF,DBF)
 P44299475 CRR 8Y JULIA 793 ET (DOD)(DLF,HYF,IEF,MSUDF,MDF) CRR 028X ECLIPSE 706 (DLF,HYF,IEF,MSUDF)
 NJW 735 W18 HOMEGROWN 8Y ET (SOD)(DLF,HYF,IEF,MSUDF,MDC,DBF)
 CRR 719T JULIA 206 (DLF,HYF,IEF,MSUDF)

SOLD

- <https://player.vimeo.com/video/1056225061?h=af9a96fc50>
- A near carbon copy of his flush brother 4105. He's Homo Polled, short marked and well pigmented. This sound moving, big country bull is calving ease deluxe. Negative BW EPD coupled with a high CED value. His dam is one of our most prolific young cows.



CED	BW	WW	YW	MM	SC	REA	MARB	BMI\$	BII\$	CHB\$
11.5	-1.5	52	82	44	0.7	0.39	0.02	479	548	109
	ACT BW	ADJ WW	ADJ YW	Age of Dam	SC	REA	MARB			
	70	604	1232	3	34	11.98	1.80			HOMOZYGOUS POLLED





4115 **CRR 116J ANDY 4115**
 {DLF,HYF,IEF,MSUDEF,MDF,DBF}

P44585982— Calved: 2/27/24

NJW 79Z Z311 ENDURE 173D ET {S00}{CHB}{DLF,HYF,IEF,MSUDEF,MDF,DBF}
ASM 801F ODYSSEY 116J {DLF,HYF,IEF,MSUDEF,MDF,DBF}
 P44297398 ASM 70S EDNA 801F ET {MDP,DBF}

CMR GVP MR MATERNAL 156T {S00}{DLF,HYF,IEF,MSUDEF,MDF}
CRR 156T ECLIPSE 558 ET {D00}{DLF,HYF,IEF,MSUDEF}
 P43589425 CRR 719 ECLIPSE 101 {D00}{DLF,HYF,IEF}

KCF BENNETT ENCORE Z311 ET {S00}{CHB}{DLF,HYF,IEF,MSUDEF,MDF,DBF}
 BW 91H 100W RITA 79Z ET {DLF,HYF,IEF,MSUDEF,MDF}
 NJW 135U 10Y HOMETOWN 27A {DLF,HYF,IEF,MSUDEF,MDF}
 ASM 122L MISS 70SET {DLF,HYF,IEF,DBF}
 PW VICTOR BOOMER P606 {S00}{DLF,HYF,IEF,MDF}
 JG WCN VICTRA 17 2103 {HYF}
 TH 122 711 VICTOR 719T {S00}{DLF,HYF,IEF,MSUDEF,MDF,DBF}
 CRR 63N ECLIPSE 982 {DLF,HYF,IEF}

- <https://player.vimeo.com/video/1056225070?h=fd0422469a>
- Herd Bull Alert.
- This high quality beefy made bull does everything right. A Homo Polled, huge testicled bull that has as much rib depth and mass as you can find. Check out the design and structure on this bull in his video. He is built right and has the genomic values to move a cowherd forward. His 10-year-old DOD dam has been a powerhouse producer in our herd for nearly a decade.



CED	BW	WW	YW	MM	SC	REA	MARB	BMI\$	BII\$	CHB\$
-2.1	2.7	71	101	39	1.1	0.73	0.28	502	606	154
	ACT BW	ADJ WW	ADJ YW	Age of Dam	SC	REA	MARB	HOMOZYGOUS POLLED		
	88	721	1230	9	39	14.16	2.94			





4117

CRR 156J STEADFAST 4117 ET

{DLF,HYF,IEF,MSUDF,MDF,DBF}

P44586455 — Calved: 2/28/24

NWJ 79Z Z311 ENDURE 173D ET (S001)(CHB)(DLF,HYF,IEF,MSUDF,MDF,DBF) KCF BENNETT ENCORE Z311 ET (S001)(CHB)(DLF,HYF,IEF,MSUDF,MDF,DBF)
 NJW 202C173D STEADFAST 156J ET (CHB)(DLF,HYF,IEF,MSUDF,MDF,DBF) BW 91H 100W RITA 79Z ET (DLF,HYF,IEF,MSUDF,MDF)
 P44276463 NJW 160Z 8Y HOME MAKER 202C (DLF,HYF,IEF,MSUDF,MDF,DBF) NJW 735 W18 HOMEGROWN 8Y ET (S001)(DLF,HYF,IEF,MSUDF,MDF,DBF)
 NJW 735 88X DAYDREAM 160Z (D001)(DLF,HYF,IEF,MSUDF,MDF)
 NJW 160B 028X HISTORIC 81E ET (DLF,HYF,IEF,MSUDF,MDF,DBF) CHURCHILL SENSATION 028X (S001)(DLF,HYF,IEF,MSUDF,MDF,DBF)
 CRR 81E ECLIPSE 033 (DLF,HYF,IEF,MSUDF,MDF,DBF) NJW 735 38W DAYDREAM 160B (DLF,HYF,IEF,MSUDF,MDF)
 P44185614 CRR 156T ECLIPSE 558 ET (D001)(DLF,HYF,IEF,MSUDF) CMR GVP MR MATERNAL 156T (S001)(DLF,HYF,IEF,MSUDF,MDF,DBF)
 CRR 719 ECLIPSE 101 (D001)(DLF,HYF,IEF)



- <https://player.vimeo.com/video/1056225084?h=f87efab176>
- A true beef bull and definitely the "Rancher kind". He's Homo Polled, pigmented, and has the structure, body shape and muscle mass that will add value to your calf crop. He sports a very balanced set of genomic values. His full brother, CRR Wind River, was the heaviest used sire at CRR in 2024. Baldy Maker.

CED	BW	WW	YW	MM	SC	REA	MARB	BMI\$	BIIS	CHBS
1.4	3.2	63	91	32	1.0	0.69	0.23	535	630	127
ACT BW	ADJ WW	ADJ YW	Age of Dam	SC	REA	MARB	HOMOZYGOUS POLLED			
89	668	1212	4	37	13.73	2.39				



4119

CRR 0183 MAVERICK 4119 ET

{DLF,HYF,IEF,MSUDF,MDF,DBF}

P44586445 — Calved: 3/1/24

NWJ 79Z Z311 ENDURE 173D ET (S001)(CHB)(DLF,HYF,IEF,MSUDF,MDF,DBF) KCF BENNETT ENCORE Z311 ET (S001)(CHB)(DLF,HYF,IEF,MSUDF,MDF,DBF)
 PCC 7009 173D MAVERICK 0183 ET (CHB)(DLF,HYF,IEF,MSUDF,MDF,DBF) BW 91H 100W RITA 79Z ET (DLF,HYF,IEF,MSUDF,MDF)
 P44183736 PCC NEW MEXICO LADY 7009 ET (DLF,HYF,IEF,MSUDF,MDF,DBF) NJW 79Z 22Z MIGHTY 49C ET (S001)(DLF,HYF,IEF,MSUDF,MDF)
 C&M KTP NEW MEXICO LADY 4006 (DLF,HYF,IEF,MSUDF,MDF,DBF)
 CRR 100W TRUST 367 ET (CHB)(DLF,HYF,IEF) NJW 735 M326 TRUST 100W ET (S001)(CHB)(DLF,HYF,IEF,MSUDF,MDF,DBF)
 CRR 367 ECLIPSE 698 (D001)(DLF,HYF,IEF) CRR P606 HONEY 678 ET (DLF,HYF,IEF)
 P43693956 CRR 713 ECLIPSE 325 (HYF) CRR 63J KODIAK 713 (DLF,HYF,IEF)
 CRR 9126J ECLIPSE 731 (D001)(DLF,HYF,IEF,MSUDF)



- <https://player.vimeo.com/video/1056225096?h=33420ce19e>
- An attractive Homo Polled embryo calf out of one of our best Dams of Distinction. His dam is a herd bull producer and is always a visitor's favorite. This sleek fronted, big topped bull exudes quality. His profit indexes are off the charts.

CED	BW	WW	YW	MM	SC	REA	MARB	BMI\$	BIIS	CHBS
0.8	3.2	61	102	35	1.4	0.95	0.17	459	541	163
ACT BW	ADJ WW	ADJ YW	Age of Dam	SC	REA	MARB	HOMOZYGOUS POLLED			
83	639	1186	8	35	14.58	2.77				



4120

CRR 824 CODY 4120

{DLF,HYF,IEF,MSUDF,MDF,DBF}

44586004 — Calved: 3/1/24

KT GOLD CREEK 6209 (DLF,HYF,IEF,MSUDF) GKX 88X LARAMIE B293 (S001)(DLF,HYF,IEF,MDF,DBF)
 CSC 502 6209 GOLD CREEK 824 (DLF,HYF,IEF,MDF) KT MS 44U DURANGO 2167 (D001)(DLF,HYF,IEF,MSUDF)
 P43908780 CSC 10Y LADY DEW 502 ET (DLF,HYF,IEF,MSUDF,MDF) NJW 735 W18 HOMETOWN 10Y ET (S001)(CHB)(DLF,HYF,IEF,MSUDF,MDF)
 NJW 5M 4037 DEW 185W ET (D001)(DLF,HYF,IEF)
 CRR 109 CATAPULT 322 (S001)(DLF,HYF,IEF,MSUDF,MDF,DBF) CRR 719 CATAPULT 109 (S001)(DLF,HYF,IEF,MDF)
 CRR 322 HONEY 701 (DLF,HYF,IEF,MSUDF,MDF,DBF) CRR 713 KELLY 0117 (DLF,HYF,IEF)
 P43847194 CRR 028X HONEY 508 (DLF,HYF,IEF,MSUDF) CHURCHILL SENSATION 028X (S001)(DLF,HYF,IEF,MDF,DBF)
 CRR 100W HONEY 354 ET



- <https://player.vimeo.com/video/1056225114?h=d90fb68289>
- This red-necked, thick ended bull is very balanced on paper and in real life. He's a sound moving, heavy muscled bull with extra length of body. I love how he is built, as 4120 never gives you a bad look. A very durable bull. CRR Baldy Maker.

CED	BW	WW	YW	MM	SC	REA	MARB	BMI\$	BIIS	CHBS
3.2	2.3	56	91	36	1.3	0.55	0.19	433	512	130
ACT BW	ADJ WW	ADJ YW	Age of Dam	SC	REA	MARB	HORNED			
86	686	1178	7	36	14.92	2.05				



4123 **CRR 173D ENDURE 4123**
 {DLF,HYF,IEF,MSUDF,MDF,DBF}

P44586320 — Calved: 3/4/24

KCF BENNETT ENCORE Z311 ET (S000)(CHB)(DLF,HYF,IEF,MSUDF,MDF,DBF)
 NJW 79Z Z311 ENDURE 173D ET (S000)(CHB)(DLF,HYF,IEF,MSUDF,MDF,DBF)
 P43722088 BW 91H 100W RITA 79Z ET (DLF,HYF,IEF,MSUDF,MDF)

SCHU-LAR ON TARGET 22S (S000)(CHB)(DLF,HYF,IEF,MSUDF,MDF,DBF)
 KCF MISS REVOLUTION X338 ET (DLF,HYF,IEF,DBP)
 NJW 73S M326 TRUST 100W ET (S000)(CHB)(DLF,HYF,IEF,MSUDF,MDF,DBF)
 REMITALL RITA 91H (DLF,HYF,IEF)

- <https://player.vimeo.com/video/1056225131?h=d3b505ffa8>
- Herd Bull Alert.
- A true breeding bull. This bull covers all the bases and is a unique breeding tool — Homo Polled, pigmented and short marked. Study this bull on the move and you will appreciate his structure, honest shape, and overall body mass. He is big testicled and offers calving ease coupled with excellent profit indexes and optimal growth. His dam is writing her own story at CRR — she is the dam of multiple herd sires including CRR Levitate and CRR Punch. She is the model beef cow.

PYRAMID FRONT RANGE 601S ET (DLF,HYF,IEF,MSUDF)
 CRR 601S ECLIPSE 8124 (DLF,HYF,IEF,MSUDF,MDF,DBF)
 P43949444 CRR 713 ECLIPSE 192 (DLF,HYF,IEF,MSUDF)

PYRAMID 16W 110T 9116 (S000)(DLF,HYF,IEF,MSUDF)
 FHF 408 RITA 21W (DLF,HYF,IEF,MSUDF)
 CRR 63J KODIAK 713 (DLF,HYF,IEF)
 CRR 9126J ECLIPSE 731 (000)(DLF,HYF,IEF,MSUDF)



CED	BW	WW	YW	MM	SC	REA	MARB	BMI\$	BII\$	CHB\$
10.7	0.9	47	82	26	1.5	0.80	0.19	570	647	168
	ACT BW	ADJ WW	ADJ YW	Age of Dam	SC	REA	MARB			
	80	671	1235	6	39	14.96	2.33	HOMOZYGOUS POLLED		





4126

CRR 018 ASTUTE 4126

{DLF,HYF,IEF,MSUDF,MDF,DBF}

P44586360— Calved: 3/5/24

NJW 735 W18 HOMEGROWN 8Y ET (SOD)(DLF,HYF,IEF,MSUDF,MDF,DBF) SHF WONDER M326 W18 ET (SOD)(CHB)(DLF,HYF,IEF,MDC,DBF)
CRR 8Y ASTUTE 018 (DLF,HYF,IEF,MSUDF,MDF) NJW P606 72N DAYDREAM 73S (DLF,HYF,IEF,MSUDF,MDF)
 P44184093 CRR 028X HONEY 50S CHURCHILL SENSATION 028X (SOD)(DLF,HYF,IEF,MDF,DBF)
 CRR 100W HONEY 357 ET
 CSC 502 6209 GOLD CREEK 824 (DLF,HYF,IEF,MDF) KT GOLD CREEK 6209 (DLF,HYF,IEF,MSUDF)
CRR 824 JULIA 1159 CSC 10Y LADY DEW 502 ET (DLF,HYF,IEF,MSUDF,MDF)
 P44299410 CRR 028X JULIA 737 CHURCHILL SENSATION 028X (SOD)(DLF,HYF,IEF,MDF,DBF)
 CRR 109 JULIA 528

SOLD



- <https://player.vimeo.com/video/1056225142?h=a8a0f35ce8>
- A balanced trait bull who is complete and fault free. He's a square built, good structured bull that is big backed and thick ended. 4126 is a large testicled bull that is moderate at birth and has excellent growth numbers. Note his high CHB index.

CED	BW	WW	YW	MM	SC	REA	MARB	BMI\$	BIIS	CHBS
7.3	2.4	62	105	38	1.9	0.59	0.12	444	525	149
	ACT BW	ADJ WW	ADJ YW	Age of Dam	SC	REA	MARB			
	87	644	1246	2	41	14.16	2.30	POLLED		



4128

CRR 35K LOYAL 4128

{DLF,HYF,IEF,MSUDF,MDF,DBF}

P44586009— Calved: 3/6/24

PYRAMID CANDOR 9139 (CHB)(DLF,HYF,IEF,MSUDF,MDF) SHF DAYBREAK Y02 D287 ET (CHB)(DLF,HYF,IEF,MSUDF)
NJW 141C 9139 LOYAL 35K (DLF,HYF,IEF,MSUDF,MDF,DBF) FHF 38Y RITA 197C (SOD)(DLF,HYF,IEF,MSUDF)
 P44390850 NJW 161Z 190Z PRAIRIE 141C (DLF,HYF,IEF,MSUDF) NJW 78P TWENTYTWELVE 190Z ET (DLF,HYF,IEF)
 NJW 39S 38W PRAIRIE 161Z (DLF,HYF,IEF,MSUDF,MDF)
 CHURCHILL SENSATION 028X (SOD)(DLF,HYF,IEF,MDF,DBF) UPS DOMINO 3027 (SOD)(CHB)(DLF,HYF,IEF,MSUDF,MDF)
CRR 028X ECLIPSE 706 (DLF,HYF,IEF,MSUDF) CHURCHILL LADY 7202T ET (DLF,HYF,IEF)
 P43847218 CRR 367 ECLIPSE 564 (HYP) CRR 100W TRUST 367 ET (CHB)(DLF,HYF,IEF)
 CRR 713 ECLIPSE 2100 (HYP)

SOLD



- <https://player.vimeo.com/video/1056225159?h=33bb532629>
- This bull embodies the CRR breeding philosophy. He is maternally bred, big testicled and perfect structured. He is built for longevity, productivity, and efficiency. His dam is one of my favorite all-time cows. Baldy Maker deluxe.

CED	BW	WW	YW	MM	SC	REA	MARB	BMI\$	BIIS	CHBS
4.0	1.5	53	93	33	1.8	0.64	0.07	400	468	115
	ACT BW	ADJ WW	ADJ YW	Age of Dam	SC	REA	MARB			
	79	682	1228	7	39	14.78	2.15	POLLED		



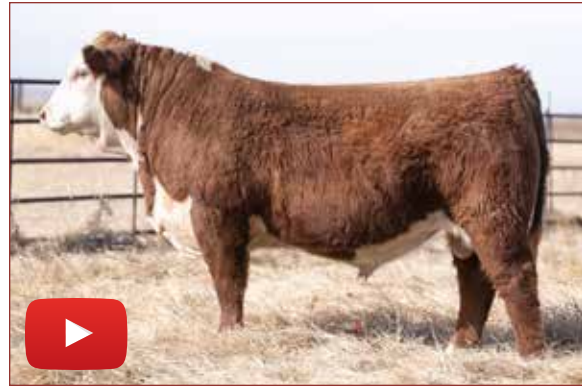
4129

CRR 35K LOYAL 4129

{DLF, HYF, IEF, MSUDEF, MDF, DBF}

P44586323 — Calved: 3/6/24

PYRAMID CANDOR 9139 (CHB)(DLF, HYF, IEF, MSUDEF, MDF)
NJW 141C 9139 LOYAL 35K (DLF, HYF, IEF, MSUDEF, MDF, DBF)
 P44390850 **NJW 161Z 190Z PRAIRIE 141C** (DLF, HYF, IEF, MSUDEF)
CRR 8Y ECLIPSE 9102 (DLF, HYF, IEF, MSUDEF, MDC)
 P44073981 **CRR 021 ECLIPSE 281** (DOD)(DLP, HYP)
SHF DAYBREAK Y02 D287 ET (CHB)(DLF, HYF, IEF, MSUDEF)
FHF 38Y RITA 197C (DOD)(DLF, HYF, IEF, MSUDEF)
NJW 78P TWENTYTWELVE 190Z ET (DLF, HYF, IEF)
NJW 39S 38W PRAIRIE 161Z (DLF, HYF, IEF, MSUDEF, MDF)
SHF WONDER M326 W18 ET (SOD)(CHB)(DLF, HYF, IEF, MDC, DBF)
NJW P606 72N DAYDREAM 73S (DLF, HYF, IEF, MSUDEF, MDF)
CRR 4037 CARGO 021 (DLF, HYF, IEF, MSUDEF)
CRR 9B ECLIPSE 402 (DLF, HYP)



- <https://player.vimeo.com/video/1056225168?h=f5933f5690>
- A Homo Polled, fully pigmented bull who will produce high value replacement females and sons that perform in the feedyard. This masculine-fronted bull is great structured, long spined and built for durability. His dam, 9102, is the dam of CRR Balance, a former Denver Pen bull who has been used heavily in prominent herds across the country. A true CRR Baldy Maker. Don't miss him.



CED	BW	WW	YW	MM	SC	REA	MARB	BMI\$	BII\$	CHB\$
4.1	3.2	56	94	38	1.0	0.65	0.10	484	560	124
	ACT BW	ADJ WW	ADJ YW	Age of Dam	SC	REA	MARB			
	91	735	1282	5	37	13.62	2.97	HOMOZYGOUS POLLED		

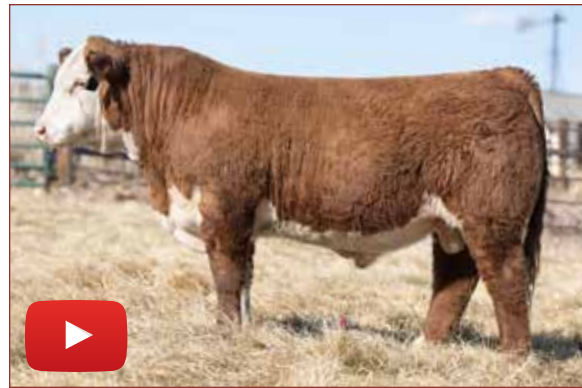
4136

CRR 35K LOYAL 4136

{DLF, HYF, IEF, MSUDEF, MDF, DBF}

P44586038 — Calved: 3/9/24

PYRAMID CANDOR 9139 (CHB)(DLF, HYF, IEF, MSUDEF, MDF)
NJW 141C 9139 LOYAL 35K (DLF, HYF, IEF, MSUDEF, MDF, DBF)
 P44390850 **NJW 161Z 190Z PRAIRIE 141C** (DLF, HYF, IEF, MSUDEF)
CRR 109 CATAPULT 322 (SOD)(DLF, HYF, IEF, MSUDEF, MDC, DBF)
CRR 322 HONEY 847
 P43950145 **CRR 028X HONEY 50S**
SHF DAYBREAK Y02 D287 ET (CHB)(DLF, HYF, IEF, MSUDEF)
FHF 38Y RITA 197C (DOD)(DLF, HYF, IEF, MSUDEF)
NJW 78P TWENTYTWELVE 190Z ET (DLF, HYF, IEF)
NJW 39S 38W PRAIRIE 161Z (DLF, HYF, IEF, MSUDEF, MDF)
CRR 719 CATAPULT 109 (SOD)(DLF, HYF, IEF, MDC)
CRR 713 KELLY 0117 (DLF, HYF, IEF)
CHURCHILL SENSATION 028X (SOD)(DLF, HYF, IEF, MDC, DBF)
CRR 100W HONEY 357 ET



- <https://player.vimeo.com/video/1056225174?h=46ff9ec7f5>
- A complete hard muscled bull designed for longevity. This large testicled bull is good structured, big footed and rugged in his build. His dam is perfect uddered, moderate in her build and a very efficient producer. Use him to produce replacement females that will thrive in big country environments.



CED	BW	WW	YW	MM	SC	REA	MARB	BMI\$	BII\$	CHB\$
3.4	2.2	51	81	27	1.5	0.54	0.03	456	523	99
	ACT BW	ADJ WW	ADJ YW	Age of Dam	SC	REA	MARB			
	92	641	1170	6	38	13.03	2.87	POLLED		

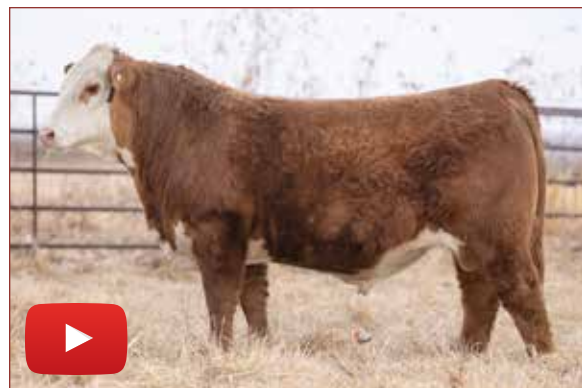
402

HLL DIVERGENT 402

{DLF, HYF, IEF, MSUDEF, MDC, DBF}

P44608420 — Calved: 1/28/24

CSC 502 6209 GOLD CREEK 824 (DLF, HYF, IEF, MDC)
CRR 824 DIVERGENT 170 (DLF, HYF, IEF, MSUDEF, MDC, DBF)
 P44294516 **CRR 028X JULIANNA 608** (DLF, HYF, IEF, MSUDEF)
NJW 133A 6589 MANIFEST 87G ET (DLF, HYF, IEF, MSUDEF, MDC, DBF)
HLL MS ECLIPSE 207K ET (MDF)
 P44403772 **CRR 8Y ECLIPSE 957** (DLF, HYF, IEF, MSUDEF, MDC)
KT GOLD CREEK 6209 (DLF, HYF, IEF, MSUDEF)
CSC 10Y LADY DEW 502 ET (DLF, HYF, IEF, MSUDEF, MDC)
CHURCHILL SENSATION 028X (SOD)(DLF, HYF, IEF, MDC, DBF)
CRR 719T JULIANNE 482 ET (DLF, HYF, IEF)
/S MANDATE 66589 ET (DLF, HYF, IEF, MSUDEF, MDC, DBF)
BW NJW 76S 8Y HOMESPUN 133A (DLF, HYF, IEF, MSUDEF, MDC)
NJW 73S W18 HOMEGROWN 8Y ET (SOD)(DLF, HYF, IEF, MSUDEF, MDC, DBF)
CRR 719T ECLIPSE 215 (DLF, HYF, IEF, MSUDEF)



- <https://player.vimeo.com/video/1056224380?h=6bdb522b4b>
- Highly maternal calving ease bull who is out of a highly efficient 2-year-old. 402 is short marked, heavily pigmented, and as athletic as you can design one. Homo Polled.



CED	BW	WW	YW	MM	SC	REA	MARB	BMI\$	BII\$	CHB\$
9.1	0.6	56	88	37	0.9	0.32	0.24	513	603	117
	ACT BW	ADJ WW	ADJ YW	Age of Dam	SC	REA	MARB			
	78	630	1171	2	39	14.00	2.10	HOMOZYGOUS POLLED		



MYO 401

MYO 107 BALANCE 401

{DLF,HYF,IEF,MSUDF}

P44587802— Calved: 2/6/24

/S MANDATE 66589 ET (DLF,HYF,IEF,MSUDF,MDF,DBF) R LEADER 6964 (S00)(DLF,HYF,IEF,MSUDF,DBF)
 CRR 66589 BALANCE 107 (DLF,HYF,IEF,MSUDF,MDF,DBF) /S LADY DOMINO 0158X (DLF,HYF,IEF)
 P44296384 CRR 8Y ECLIPSE 9102 (DLF,HYF,IEF,MSUDF,MDC) NJW 73S W18 HOMEGROWN 8Y ET (S00)(DLF,HYF,IEF,MSUDF,MDF,DBF)
 CRR 021 ECLIPSE 281 (D00)(DLP,HYP)
 JDH AH PROMINENT 21G ET (CHR)(DLF,HYF,IEF,MSUDF,MDF,DBF) JDH 118 STUD 3134 63E (CHR)(DLF,HYF,IEF,MSUDF,MDF,DBF)
 MYO 21G TRIXIE 216 JDH AH MS 34X VICTOR 33Z45C ET (DLF,HYF,IEF,MSUDF)
 P44395654 MYO 322 TRIXIE 707ET CRR 109 CATAPULT 322 (S00)(DLF,HYF,IEF,MSUDF,MDF,DBF)
 BCC TRIXIE 283Z (D00)(DLF,HYF,IEF)

SOLD

- <https://player.vimeo.com/video/1056225192?h=2bba717dc3>
- A moderate-framed, well made, calving ease prospect with well-developed testicles. 401 is deep sided, expressively muscled, and sleek fronted. Great birth to yearling spread with exceptional profit indexes.



CED	BW	WW	YW	MM	SC	REA	MARB	BMI\$	BIIS	CHBS
6.6	0.5	63	93	31	1.3	0.71	0.29	582	681	151
	ACT BW	ADJ WW	ADJ YW	Age of Dam	SC	REA	MARB			
	71	639	1061	2	37	13.91	2.78	SCURRED		



MYO 402

MYO 66589 MANDATE 402

{DLF,HYF,IEF,MSUDF}

P44587805— Calved: 2/8/24

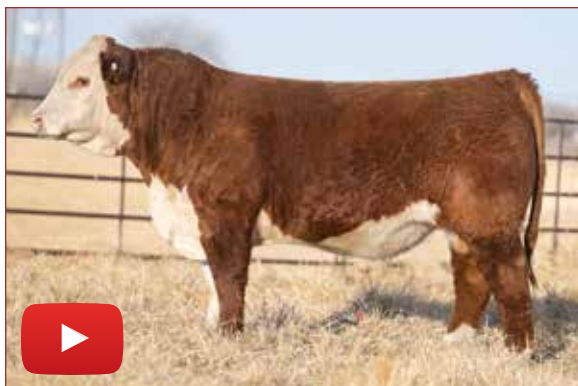
R LEADER 6964 (S00)(DLF,HYF,IEF,MSUDF,DBF) R LEADER 6964 (S00)(DLF,HYF,IEF,MSUDF,DBF)
 /S MANDATE 66589 ET (DLF,HYF,IEF,MSUDF,MDF,DBF) R MISS REVOLUTION 1009 (D00)(DLF,HYF,IEF,DBP)
 P43834732 /S LADY DOMINO 0158X (DLF,HYF,IEF) SHF RIB EYE M326 R117 (S00)(CHR)(DLF,HYF,IEF)
 /S LADY DOMINO 652S (DLF,IEF)
 HAROLDSON'S UPGRADE T100 33D (CHR)(DLF,HYF,IEF,MSUDF,MDF,DBF) SHF TAHOE R117 T100 (MSUDF,MDF,DBF)
 MYO 33D TRIXIE 211 ET (DLF,HYF,IEF,MSUDF) MOHICAN MISSEY 93W (HYP)
 P44386971 BCC TRIXIE 283Z (D00)(DLF,HYF,IEF) LSW WCC ABOUT TIME X06 (DLF,HYF,IEF)
 BCC CARLIE 075X ET (D00)(DLF,HYF,IEF)

SOLD

- <https://player.vimeo.com/video/1056225210?h=ebbe1c0b3d>
- A short marked bull with optimum growth numbers for low input operations. His 2-year-old dam is stacked with highly productive, high-end cows that have helped built the Mayo Ridge herd. He should sire efficient, highly profitable daughters with good udders. He is good shouldered, square hipped and soggy middled.



CED	BW	WW	YW	MM	SC	REA	MARB	BMI\$	BIIS	CHBS
2.2	1.4	58	86	19	1.1	0.38	0.15	470	554	108
	ACT BW	ADJ WW	ADJ YW	Age of Dam	SC	REA	MARB			
	79	638	1078	2	34	13.84	3.15	POLLED		



MYO 403

MYO 0376H RED CLOUD 403

{DLF,HYF,IEF,MSUDF}

P44587808— Calved: 2/9/24

CHURCHILL RED BARON 8300F ET (DLF,HYF,IEF,MSUDF,MDF,DBF) R LEADER 6964 (S00)(DLF,HYF,IEF,MSUDF,DBF)
 CHURCHILL RED CLOUD 0376H ET (DLF,HYF,IEF,MSUDF,MDF) CHURCHILL LADY 500C ET (DLF,HYF,IEF,MDF,DBF)
 P44273826 BR VALIDATED B413 6035 7098 (DLF,HYF,IEF,MDF,DBF) EFBEEF BR VALIDATED B413 (S00)(CHR)(DLF,HYF,IEF,MSUDF,MDF,DBF)
 BR BENNETT 4R Y428 2101 6035 (HYF,DBP)
 CHURCHILL KICKSTART 501C ET (S00)(DLF,HYF,IEF,MSUDF,MDF,DBF) CHURCHILL RED BULL 200Z (S00)(DLF,HYF,IEF,MSUDF,MDF,DBF)
 MYO 501C IRON LADY 801 HVH OKSANA 4L 33N (DLF,HYF,IEF,DBP)
 P43976503 ILR 109 IRON LADY 41388 ET CRR 719 CATAPULT 109 (S00)(DLF,HYF,IEF,MDF)
 K&B LADY SENTRY 8090U (DLF,HYF,IEF,MSUDF,MDF)

SOLD

- <https://player.vimeo.com/video/1056225224?h=95311ea953>
- A growthy long bodied "Rancher's kind" of bull. He's a masculine, heavy duty bull that has an abundance of shape and skeletal width. 403 weaned heavy and has very balanced EPDs across the board. His combination of moderate birth to higher growth numbers will be profitable to any operation. Large testicled to boot!



CED	BW	WW	YW	MM	SC	REA	MARB	BMI\$	BIIS	CHBS
9.3	1.6	64	95	28	1.5	0.56	0.07	487	570	125
	ACT BW	ADJ WW	ADJ YW	Age of Dam	SC	REA	MARB			
	85	730	1215	6	40	13.11	1.86	POLLED		

MYO 405

MYO 107 BALANCE 405

{DLF,HYF,IEF,MSUDF}

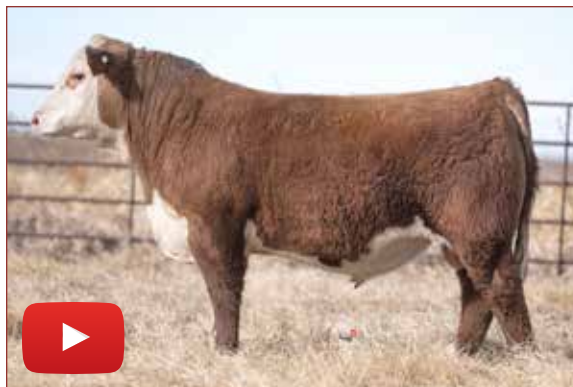
P44587810 — Calved: 2/12/24

/S MANDATE 66589 ET (DLF,HYF,IEF,MSUDF,MDF,DBF)
CRR 66589 BALANCE 107 (DLF,HYF,IEF,MSUDF,MDF,DBF)
 P44296384 CRR 8Y ECLIPSE 9102 (DLF,HYF,IEF,MSUDF,MDC)

R LEADER 6964 (SODI)(DLF,HYF,IEF,MSUDF,DBF)
 /S LADY DOMINO 0158X (DLF,HYF,IEF)
 NJW 735 W18 HOMEGROWN 8Y ET (SODI)(DLF,HYF,IEF,MSUDF,MDC,DBF)
 CRR 021 ECLIPSE 281 (DOB)(DLF,HYF)

CRR 824 CODY 0143 (DLF,HYF,IEF,MSUDF)
MYO 0143 TRIXIE 219
 P44395166 MYO 501C TRIXIE 918

CSC 502 6209 GOLD CREEK 824 (DLF,HYF,IEF,MDF)
 CRR 719T AMBER 225 (DLF,HYF,IEF)
 CHURCHILL KICKSTART 501C ET (SODI)(DLF,HYF,IEF,MSUDF,MDF,DBF)
 BCC TRIXIE 283Z (DOB)(DLF,HYF,IEF)



- <https://player.vimeo.com/video/1056225233?h=3163f9f2f1>
- A short marked, heavily pigmented bull who is Homo Polled. He has the overall mass, rib shape and design to add to your calf crop. 405 has the quality and presence that stands out in a crowd. He is exceptional in his birth to growth genomic values. A high-volume bull with numbers that translate to breeding versatility.



CED	BW	WW	YW	MM	SC	REA	MARB	BMI\$	BII\$	CHB\$
5.6	1.8	65	104	30	1.3	0.47	-0.08	326	394	101
ACT BW	ADJ WW	ADJ YW	Age of Dam	SC	REA	MARB				
79	678	1154	2	33	14.44	1.50	HOMOZYGOUS POLLED			

MYO 407

MYO 182F EROS 407

{DLF,HYF,IEF,MSUDF,MDF,DBF}

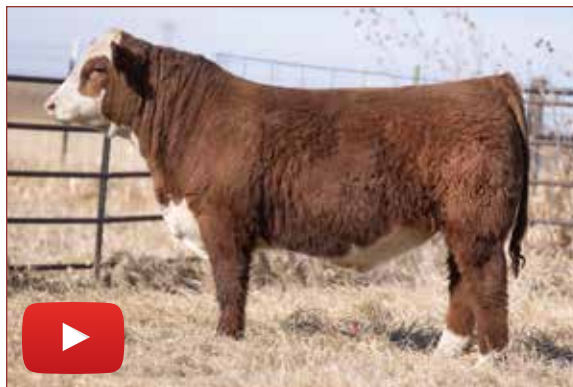
P44554070 — Calved: 2/14/24

R LEADER 6964 (SODI)(DLF,HYF,IEF,MSUDF,DBF)
KJ BJ 309C LEADER 182F (DLF,HYF,IEF,MSUDF,MDF,DBF)
 P43930534 KJ BJ 236X TIMEWISE 309C ET (DLF,HYF,IEF,MSUDF,MDF)

HYALITE ON TARGET 936 (SODI)(DLF,HYF,IEF,MSUDC)
 R MISS REVOLUTION 1009 (DOB)(DLF,HYF,IEF,DBP)
 SHF WONDER M326 W18 ET (SODI)(CHB)(DLF,HYF,IEF,MDC,DBF)
 KJ 618N TIMEWISE 236X (DLF,HYF,IEF,MDF,DBF)

CHURCHILL JR FRONTLINE 6200D (DLF,HYF,IEF,MSUDF,MDF,DBP)
CSC 821 MISS WYO 120 (DLF,HYF,IEF,MSUDF,MDF,DBF)
 P44257102 CSC 76Y MISS WYO 821 (DLF,HYF,IEF)

CHURCHILL MANHATTAN 428B ET (DLF,HYF,IEF,DBP)
 H MS 0103 MARIAH 4437 ET (DLF,HYF,IEF,MSUDF,MDF)
 KT GOLD CREEK 6209 (DLF,HYF,IEF,MSUDF)
 LB 3T 22U MISS 76Y (DLF,HYF,IEF)



- <https://player.vimeo.com/video/1056225249?h=bd5a9bf3d8>
- A goggle eyed, Homo Polled bull that puts it all together. He's a big nuted high indexing bull that will sire pounds and power. I love the bone and foot size on this athletic bull who is proud and arrogant in his demeanor. His 3-year-old dam is exceptional and is destined for the donor pen.



CED	BW	WW	YW	MM	SC	REA	MARB	BMI\$	BII\$	CHB\$
1.7	3.2	75	119	38	1.5	0.86	0.14	460	555	133
ACT BW	ADJ WW	ADJ YW	Age of Dam	SC	REA	MARB				
84	746	1219	2	40	13.84	2.30	HOMOZYGOUS POLLED			

MYO 408

MYO 66589 MANDATE 408

{DLF,HYF,IEF,MSUDF}

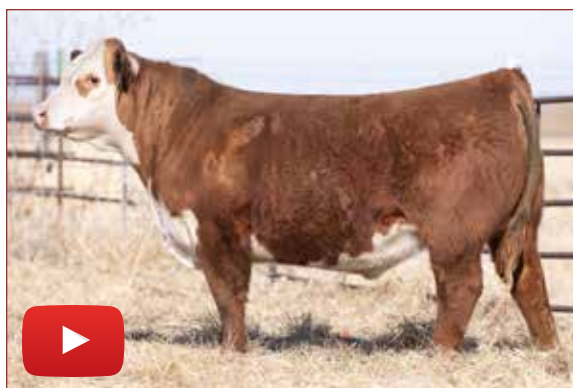
P44587813 — Calved: 2/15/24

R LEADER 6964 (SODI)(DLF,HYF,IEF,MSUDF,DBF)
 /S MANDATE 66589 ET (DLF,HYF,IEF,MSUDF,MDF,DBF)
 P43834732 /S LADY DOMINO 0158X (DLF,HYF,IEF)

HYALITE ON TARGET 936 (SODI)(DLF,HYF,IEF,MSUDC)
 R MISS REVOLUTION 1009 (DOB)(DLF,HYF,IEF,DBP)
 SHF RIB EYE M326 R117 (SODI)(CHB)(DLF,HYF,IEF)
 /S LADY DOMINO 652S (DLF,IEF)

JDH AH PROMINENT 21G ET (CHB)(DLF,HYF,IEF,MSUDF,MDF,DBP)
MYO 21G SKYYE 230
 P44395655 CRR 322 SKYYE 6110

JDH 11B STUD 3134 63E (CHB)(DLF,HYF,IEF,MSUDF,MDF,DBP)
 JDH AH MS 34X VICTOR 33245C ET (DLF,HYF,IEF,MSUDF)
 CRR 109 CATAPULT 322 (SODI)(DLF,HYF,IEF,MSUDF,MDF,DBF)
 CRR 4037 ECLIPSE 185



- <https://player.vimeo.com/video/1056225263?h=9abb91e0d7>
- A heifer safe bull that checks all the boxes. He's short marked, heavily pigmented and sports exceptional EPDs and indexes across the board. Visually he is a well-built bull who is made like his genomics read. Smooth shouldered, good jointed and has an ample amount of volume and rib shape. Big testicles.



CED	BW	WW	YW	MM	SC	REA	MARB	BMI\$	BII\$	CHB\$
7.8	0.4	60	89	27	1.4	0.30	0.41	479	582	142
ACT BW	ADJ WW	ADJ YW	Age of Dam	SC	REA	MARB				
73	654	1133	2	40	12.48	2.10	POLLED			



MYO 409

MYO 0143 CODY 409

{DLF,HYF,IEF,MSUDF}

P44587814 — Calved: 2/15/24

CSC 502 6209 GOLD CREEK 824 (DLF,HYF,IEF,MDF)
CRR 824 CODY 0143 (DLF,HYF,IEF,MSUDF)
 P44182002 CRR 719T AMBER 225 (DLF,HYF,IEF)

SOLD

KT GOLD CREEK 6209 (DLF,HYF,IEF,MSUDF)
 CSC 10Y LADY DEW 502 ET (DLF,HYF,IEF,MSUDF,MDF)
 TH 122 711 VICTOR 719T (SOD)(DLF,HYF,IEF,MSUDF,MDF,DBF)
 CRR T31 AMBER 937

NJW 79Z 2311 ENDURE 173D ET (SOD)(CHB)(DLF,HYF,IEF,MSUDF,MDF,DBF)
MYO 173D CARREY 012 (IEP)
 P44190420 NICHOLS LADY 514 (IEP)

KCF BENNETT ENCORE Z311 ET (SOD)(CHB)(DLF,HYF,IEF,MSUDF,MDF,DBF)
 BW 91H 100W RITA 792 ET (DLF,HYF,IEF,MSUDF,MDF)
 ECR AL REE HEIGHTS 3003 ET (DLF,HYF,IEF,MSUDF)
 NICHOLS LADY 1128 (IEP)

- <https://player.vimeo.com/video/1056225273?h=3d9626dc61>
- A high growth, big, long bodied bull that exhibits an abundance of pigment. He's a stoutly made, rugged bull that is very athletic. His genomic profile reads with extra pounds at weaning and yearling with a high CHB value. Mass and power from any angle.



CED	BW	WW	YW	MM	SC	REA	MARB	BMI\$	BII\$	CHB\$
4.2	3.9	59	94	24	1.2	0.59	0.14	304	377	139
	ACT BW	ADJ WW	ADJ YW	Age of Dam	SC	REA	MARB			
	86	705	1214	4	37	13.37	2.56	SCURRED		



MYO 417

MYO 153 LAND GRANT 417

{DLF,HYF,IEF,MSUDF}

P44587820 — Calved: 2/19/24

LOEWEN GENESIS G16 ET (CHB)(DLF,HYF,IEF,MDF,DBF)
KSU LAND GRANT 153 ET (CHB)(DLF,HYF,IEF,MSUDF,MDF,DBF)
 P44231207 KSU MISS MISTY 956 ET (DLF,HYF,IEF,MSUDF)

SOLD

NJW 79Z 2311 ENDURE 173D ET (SOD)(CHB)(DLF,HYF,IEF,MSUDF,MDF,DBF)
 LOEWEN 77 48 MISS 344N 4RB42ET (DLF,HYF,DBF)
 R LEADER 6964 (SOD)(DLF,HYF,IEF,MSUDF,DBF)
 KJ 2745 ROXY 482Y ET (DLF,HYF,IEF,MSUDF)

CRR 719 CATAPULT 109 (SOD)(DLF,HYF,IEF,MDF)
CRR 109 ECLIPSE 380 (DLP,HYP)
 P43384288 CRR 9B ECLIPSE 402 (DLP,HYP)

TH 122 711 VICTOR 719T (SOD)(DLF,HYF,IEF,MSUDF,MDF,DBF)
 CRR 4037 ECLIPSE 808 (DLF,HYF,IEF)
 C&L DOUBLE TIME 452M 9B (SOD)(DLF,HYF,IEF,MSUDF,MDF,DBF)
 CRR 63J ECLIPSE 280 (DLP,HYP)

- <https://player.vimeo.com/video/1056225284?h=813ad41f74>
- A Homo Polled short marked bull with a ground eating long stride. He reads as a calving ease bull with optimal growth numbers. This long shapely bull is built for longevity and maternal excellence. His 12-year-old dam always produces and has excellent progeny indexes.



CED	BW	WW	YW	MM	SC	REA	MARB	BMI\$	BII\$	CHB\$
9.1	0.5	50	83	29	0.9	0.16	0.04	384	450	100
	ACT BW	ADJ WW	ADJ YW	Age of Dam	SC	REA	MARB			
	83	678	1202	10	35	14.04	1.71	HOMOZYGOUS POLLED		



MYO 419

MYO 0143 CODY 419

{DLF,HYF,IEF,MSUDF}

P44587822 — Calved: 2/19/24

CSC 502 6209 GOLD CREEK 824 (DLF,HYF,IEF,MDF)
CRR 824 CODY 0143 (DLF,HYF,IEF,MSUDF)
 P44182002 CRR 719T AMBER 225 (DLF,HYF,IEF)

SOLD

KT GOLD CREEK 6209 (DLF,HYF,IEF,MSUDF)
 CSC 10Y LADY DEW 502 ET (DLF,HYF,IEF,MSUDF,MDF)
 TH 122 711 VICTOR 719T (SOD)(DLF,HYF,IEF,MSUDF,MDF,DBF)
 CRR T31 AMBER 937

R LEADER 6964 (SOD)(DLF,HYF,IEF,MSUDF,DBF)
KJ 746D COCO DELIGHT 281J ET (DLF,HYF,IEF,MSUDF)
 P44235222 KJ BJ 339A COCO CREME 746D ET (DLF,HYF,IEF,MSUDF,MDF,DBF)

HYALITE ON TARGET 936 (SOD)(DLF,HYF,IEF,MSUDF)
 R MISS REVOLUTION 1009 (SOD)(DLF,HYF,IEF,DBF)
 H/TSR/CHEZ/FULL THROTTLE ET (SOD)(CHB)(DLF,HYF,IEF,DBF)
 BBH 743 ADORA 339A (DLF,HYF,IEF,MSUDF)

- <https://player.vimeo.com/video/1056225301?h=b49586b029>
- Homo Polled, short marked and heavily pigmented growth and power bull. His actual performance and ratios mirror his genomic values. He recorded a high weaning and yearling weight. You will love his flexible stride and big foot. This large testicled bull will add pounds to his progeny.



CED	BW	WW	YW	MM	SC	REA	MARB	BMI\$	BII\$	CHB\$
2.5	3.5	62	111	19	1.2	0.36	-0.08	259	321	85
	ACT BW	ADJ WW	ADJ YW	Age of Dam	SC	REA	MARB			
	84	751	1304	3	39	13.23	2.31	HOMOZYGOUS POLLED		



MYO 425 **MYO 927 ON TIME 425 ET**
 {DLF,HYF,IEF,MSUDF}

44587960— Calved: 2/22/24

CRR 109 ON POINT 559 ET (DLF,HYF,IEF,MSUDF,MDF,DBF)
MYO 559 ON TIME 927 ET (DLF,HYF,IEF,MSUDF,MDF,DBF)
 P44070735 BCC TRIXIE 283Z (DOD)(DLF,HYF,IEF)

CRR 719 CATAPULT 109 (SOD)(DLF,HYF,IEF,MDF)
 CRR 435 KELLY 161 (DLF,HYF,IEF,MDF,DBF)
 LSW WCC ABOUT TIME X06 (DLF,HYF,IEF)
 BCC CARLIE 075X ET (DOD)(DLF,HYF,IEF)

- <https://player.vimeo.com/video/1056225311?h=06adb688bb>
- Herd Bull Alert.
- A massive, super sound bull with awesome phenotype. He is built well from the ground up. He's correctly balanced and has true shape and mass from any angle. Pay close attention to his video as this stout made herd bull with garner attention from registered and commercial breeders alike.

KJ BJ 58Z CONTENDER D56 ET (CHB)(DLF,HYF,IEF,MSUDF,MDF,DBF)
KJ 672D CLASSY CAT 883H (DLF,HYF,IEF,MSUDF,MDF,DBF)
 P44166513 KJ BJ 719Z VELVET 672D ET (DOD)(DLF,HYF,IEF,MSUDF,MDF,DBF)

UPS SENSATION 2296 ET (SOD)(DLF,HYF,IEF,MSUDF,MDF,DBF)
 MSU RACHAEL 58Z ET (DLF,HYF,IEF,DBF)
 R LEADER 6964 (SOD)(DLF,HYF,IEF,MSUDF,DBF)
 KJ BJ 167X VELVET 719Z (DLF,HYF,IEF)



CED	BW	WW	YW	MM	SC	REA	MARB	BMI\$	BII\$	CHB\$
3.9	2.1	55	84	34	1.2	0.53	0.01	323	386	107
	ACT BW	ADJ WW	ADJ YW	Age of Dam	SC	REA	MARB			
	87	736	1215	4	37	14.20	2.39	HORNED		





MYO 426 **MYO 0376 RED CLOUD 426**
 {DLF,HYF,IEF,MSUDF}

P44587831— Calved: 2/22/24

CHURCHILL RED BARON 8300F ET (DLF,HYF,IEF,MSUDF,MDF,DBF)
CHURCHILL RED CLOUD 0376H ET (DLF,HYF,IEF,MSUDF,MDF)
 P44273826 BR VALIDATED B413 6035 7098 (DLF,HYF,IEF,MDF,DBF)
 CRR 109 CATAPULT 322 (SOD)(DLF,HYF,IEF,MSUDF,MDF,DBF)
MYO 322 TRIXIE 707ET
 43850156 BCC TRIXIE 283Z (DOD)(DLF,HYF,IEF)

R LEADER 6964 (SOD)(DLF,HYF,IEF,MSUDF,DBF)
 CHURCHILL LADY 500C ET (DLF,HYF,IEF,MDF,DBF)
 EFBEEF BR VALIDATED B413 (SOD)(CHB)(DLF,HYF,IEF,MSUDF,MDF,DBF)
 BR BENNETT 4R Y428 2101 6035 (HYF,DBF)
 CRR 719 CATAPULT 109 (SOD)(DLF,HYF,IEF,MDF)
 CRR 713 KELLY 0117 (DLF,HYF,IEF)
 LSW WCC ABOUT TIME X06 (DLF,HYF,IEF)
 BCC CARLIE 075X ET (DOD)(DLF,HYF,IEF)

SOLD

- <https://player.vimeo.com/video/1056224512?h=a6a60cae81>
- Herd Bull Alert.
- A bona fide herd bull prospect that will be a cowherd builder. Masculine fronted, sound structured, and possesses the extra dimension and mass that will translate into high value progeny. His genomic values are exceptional. He combines lower birthweights with higher growth and profit indexes. The cow power behind this bull is unbelievable. MYO's "Trixie" cow and the famous "7098" from the Churchill program are up close in his pedigree.



CED	BW	WW	YW	MM	SC	REA	MARB	BMI\$	BII\$	CHB\$
2.9	1.1	57	95	23	0.7	0.85	0.17	430	507	143
	ACT BW	ADJ WW	ADJ YW	Age of Dam	SC	REA	MARB			
	83	691	1194	7	38	15.84	2.02			POLLED



**MYO
434****MYO 018 ASTUTE 434**

{DLF,HYF,IEF,MSUDF}

P44587840 — Calved: 2/25/24

NJW 73S W18 HOMEGROWN 8Y ET {SOD}(DLF,HYF,IEF,MSUDF,MDC,DBF)

SHF WONDER M326 W18 ET {SOD}(CHB)(DLF,HYF,IEF,MDC,DBF)

CRR 8Y ASTUTE 018 {DLF,HYF,IEF,MSUDF,MDF}

NJW P606 72N DAYDREAM 73S {DLF,HYF,IEF,MSUDF,MDF}

P44184093 CRR 028X HONEY 505

CHURCHILL SENSATION 028X {SOD}(DLF,HYF,IEF,MDF,DBF)

CRR 100W HONEY 357 ET

CSC 6209 GOLD CREEK 824 {DLF,HYF,IEF,MDF}

KT GOLD CREEK 6209 {DLF,HYF,IEF,MSUDF}

CRR 824 HONEY 013

CSC 10Y LADY DEW 502 ET {DLF,HYF,IEF,MSUDF,MDF}

P44182126 CRR 109 HONEY 7122

CRR 719 CATAPULT 109 {SOD}(DLF,HYF,IEF,MDF)

CRR 100W HONEY 357 ET



- <https://player.vimeo.com/video/1056225318?h=387fb030bf>
- The heaviest weaning weight bull in the MYO calf crop. He is a big, stout, huge hipped bull that will translate pounds and production to his progeny. This bull also scanned exceptionally well for REA and IMF. His dam is a hard-working young cow with great progeny ratios.



CED	BW	WW	YW	MM	SC	REA	MARB	BMI\$	BII\$	CHB\$
3.3	4.4	72	112	31	1.2	0.67	-0.02	306	381	120
ACT BW		ADJ WW	ADJ YW	Age of Dam	SC	REA	MARB			
86		813	1308	3	35	15.69	3.07	POLLED		

**MYO
446****MYO 0143 CODY 446**

{DLF,HYF,IEF,MSUDF,DBP}

P44587851 — Calved: 3/13/24

CSC 502 6209 GOLD CREEK 824 {DLF,HYF,IEF,MDF}

KT GOLD CREEK 6209 {DLF,HYF,IEF,MSUDF}

CRR 824 CODY 0143 {DLF,HYF,IEF,MSUDF}

CSC 10Y LADY DEW 502 ET {DLF,HYF,IEF,MSUDF,MDF}

P44182002 CRR 719T AMBER 225 {DLF,HYF,IEF}

TH 122 711 VICTOR 719T {SOD}(DLF,HYF,IEF,MSUDF,MDF,DBF)

CRR T31 AMBER 937

PURPLE CHACHI 65Z ET {DLF,HYF,IEF,DBP}

PURPLE CURRENCY 24U ET {DLF,HYF,IEF,DBP}

PURPLE MYO ZOEY 21C {DBP}

PURPLE CMCC CARMELLA 1P {DLF,HYF,IEF}

P43643046 PURPLE ZELDA 20A ET {DLF,HYF,IEF}

GO EXCEL L18 {SOD}(DLF,HYF,IEF)

MCR PPF MISS GOLD DOM 206 ET {DLF,HYF,IEF}



- <https://player.vimeo.com/video/1056225327?h=72576976b8>
- A Homo Polled big butted bull with a correct design. He is a sound moving big bodied bull that will work well in big country operations that demand performance with limited inputs.



CED	BW	WW	YW	MM	SC	REA	MARB	BMI\$	BII\$	CHB\$
3.3	2.9	55	89	22	1.2	0.52	-0.04	227	282	105
ACT BW		ADJ WW	ADJ YW	Age of Dam	SC	REA	MARB			
89		685	1196	9	34	15.85	1.80	HOMOZYGOUS POLLED		





MYO 453 **MYO 153 LAND GRANT 453**
 {DLF,HYF,IEF,MSUDF}

P44587868 — Calved: 3/27/24

LOEWEN GENESIS G16 ET (CHBI)(DLF,HYF,IEF,MDF,DBF)
KSU LAND GRANT 153 ET (CHBI)(DLF,HYF,IEF,MSUDF,MDF,DBF)
 P44231207 KSU MISS MISTY 956 ET (DLF,HYF,IEF,MSUDF)

LSW WCC ABOUT TIME X06 (DLF,HYF,IEF)
BCC TRIXIE 283Z (D00)(DLF,HYF,IEF)
 P43278121 BCC CARLIE 075X ET (D00)(DLF,HYF,IEF)

NJW 79Z Z311 ENDURE 173D ET (SOD)(CHBI)(DLF,HYF,IEF,MSUDF,MDF,DBF)
 LOEWEN 77 48 MISS 344N 4RB4ZET (DLF,HYF,DBF)
 R LEADER 6964 (SOD)(DLF,HYF,IEF,MSUDF,DBF)
 KJ 274S ROXY 482Y ET (DLF,HYF,IEF,MSUDF)
 CRR ABOUT TIME 743 (SOD)(DLF,HYF,IEF,MDF)
 WBCC WCC 69P MS RANGELAND U800 (DLF,HYF,IEF)
 TFR HIGH COTTON 328 ET (SOD)(DLF,IEF)
 BCC KAY 415 (DLF,HYF,IEF)

- <https://player.vimeo.com/video/1056225345?h=abcdc9495a>
- Herd Bull Alert.
- We might be ending our offering with one of our best herd sire prospects. His dam is the immortal "Trixie" cow that has built the Mayo Ridge herd. He is a true anomaly as he is built very maternally with his soft rib, large testicles, and sound structure; yet he backs that up with true mass, power and performance. If you believe great herd sires come from great dams study this bull carefully. Cowherd Builder!



CED	BW	WW	YW	MM	SC	REA	MARB	BMI\$	BII\$	CHB\$
5.2	1.8	61	97	24	1.3	0.45	0.04	333	405	107
	ACT BW	ADJ WW	ADJ YW	Age of Dam	SC	REA	MARB			
	83	783	1366	12	39	14.88	1.46			POLLED



Exciting, New Herd Sire



CRR 156J WIND RIVER 347 {DLF,HYF,IEF,MSUDF,MDF,DBF}

P44507524 — Calved: 2/12/23

NJW 79Z 2311 ENDURE 173D ET (S00D)(CHB)(DLF,HYF,IEF,MSUDF,MDF,DBF)
NJW 202C173DSTEADFAST 156J ET (CHB)(DLF,HYF,IEF,MSUDF,MDF,DBF)
 P44276463 NJW 160Z 8Y HOME MAKER 202C (DLF,HYF,IEF,MSUDF,MDC,DBF)

NJW 160B 028X HISTORIC 81E ET (DLF,HYF,IEF,MSUDF,MDF,DBF)
CRR 81E ECLIPSE 033 (DLF,HYF,IEF,MSUDF,MDF,DBF)
 P44185614 CRR 156T ECLIPSE 558 ET (D00D)(DLF,HYF,IEF,MSUDF)

KCF BENNETT ENCORE Z311 ET (S00D)(CHB)(DLF,HYF,IEF,MSUDF,MDF,DBF)
 BW 91H 100W RITA 79Z ET (DLF,HYF,IEF,MSUDF,MDF)
 NJW 73S W18 HOMEGROWN 8Y ET (S00D)(DLF,HYF,IEF,MSUDF,MDC,DBF)
 NJW 73S 88X DAYDREAM 160Z (D00D)(DLF,HYF,IEF,MSUDF,MDF)

CHURCHILL SENSATION 028X (S00D)(DLF,HYF,IEF,MDF,DBF)
 NJW 73S 38W DAYDREAM 160B (DLF,HYF,IEF,MSUDF)
 CMR GVP MR MATERNAL 156T (S00D)(DLF,HYF,IEF,MSUDF,MDF)
 CRR 719 ECLIPSE 101 (D00D)(DLF,HYF,IEF)

- <https://player.vimeo.com/video/1056225359?h=05c62fc60a>
- Wind River 347 is a power bull that is a highly versatile breeding tool. Maternal efficiency, excellent growth at weaning and yearling along with high carcass values and profit indexes are stacked into 347's pedigree.
- His phenotype is impeccable. Wind River is built right from the ground up. Big foot, deep massive rib cage and has a powerful square hip.
- He has the breed character and masculinity that CRR demands from our herd bulls.
- Natural calf backed by a powerful and highly functional cow family — generations of Dams of Distinction.
- Use Wind River to build a maternal base and produce high quality sought after sons.
- Lead off bull in CRR's Grand Champion Pen, Denver 2024.
- Wind River was the heaviest used sire at CRR in 2024.
- **HOMOZYGOUS POLLED**

Semen: \$40/Straw; \$75/Certificate

CE	BW	WW	YW	DMI	SC	SCF	MM	M&G	MCE	MCW	UDDR	TEAT	CW	FAT	REA	MARB	BMI\$	BIIS	CHB\$
-0.7	2.8	66	104	0.7	1.4	26.9	44	77	-0.2	97	1.30	1.30	96	0.092	0.85	0.27	541	640	152



2025 Private Treaty Offering

COYOTE RIDGE RANCH

CoyoteRidgeHerefords.com

CRR Hereford Bulls ... Producing Top Baldys



CRR 66589 BALANCE 107



PYRAMID CANDOR 9139



CSC 502 6209 GOLD CREEK 824



CRR PEN OF BULLS
2025 NWSS Reserve Champion Pen of Bulls



CRR PEN OF BULLS
2024 NWSS Grand Champion Pen of Bulls



CRR PEN OF BULLS
2022 NWSS Grand Champion Pen of Bulls



CRR PEN OF BULLS
2020 NWSS Grand Champion Pen of Bulls

At Coyote Ridge Ranch we've built a cowherd that is a model for the Hereford breed. Cow families are stacked for generations to produce high quality, functional, maternal cattle that work for the entire beef industry. Behind every CRR bull is a cow family that will stand the test of time, because we strongly believe ...

There's More to the Picture than Meets the Eye

PRIVATE TREATY BULL SALE – SPRING 2025

See catalog on website Spring 2025



COYOTE RIDGE RANCH

18300 Co. Rd. 43 • La Salle, CO 80645

Jane Evans Cornelius
970-371-0500 Cell

Hampton and Kay
970-396-2935 Cell

Katie Cornelius and Lee Mayo
970-396-8320



www.coyoteridgeherefords.com

