

MIDDLE TENNESSEE



MIDDLE TENNESSEE Hereford Association



April 27, 2024 • 11:30 a.m. CT
Kentucky-Tennessee Livestock Market
Cross Plains, Tennessee

MIDDLE TENNESSEE Hereford Association



April 27, 2024 • 11:30 a.m. CT
Kentucky-Tennessee Livestock Market
Cross Plains, Tennessee

Sale Staff

Dale Stith, Auctioneer, TAL #5782(918) 760-1550
Tommy Coley, AHA.....(815) 988-7051
Mitch Ingram, Ringman(423) 337-1383
Gene Steiner, Ringman(513) 616-4086

Sale Day Phone

KY-TN Livestock Market(615) 654-3818

Online Bidding

Web address: www.cowbuyer.com
Aaron Ray Tompkins: 336-363-4639



Terms and Conditions:

Every animal sold to the highest bidder for cash or check. The auctioneer will settle any dispute as to bids.

Announcements:

Announcements made from the auction block take precedence over the printed matter in the catalog.

Risk & Herd Health:

Each animal will be at the purchaser's risk as soon as sold and can be moved only after settlement is made. An individual health certificate will be furnished on each animal sold, meeting state and federal requirements.

Certificates and Transfers:

A certificate of registry and transfer will be furnished for each animal sold. Cows bred AI will NOT have an AI certificate furnished. Calves born after the sale will be registered by the purchaser.

EPDS:

EPDS are accurate as of printing. Please visit the AHA website for the most up to date EPDs.

Breeding Guarantee:

All sale lot animals are guaranteed breeders. Animals are sold under the breeding guarantee guidelines of the American Hereford Association.

Other:

The above guarantees and terms of the sale shall constitute a contract between the buyer and the seller of each lot, and shall be equally binding upon both. Neither the association, sale manager, nor any other person connected with the management of the sale assumes any liability for the safety of the building or premises or the behavior of the animals, legal or otherwise. All persons attending the sale do so at their own risk.

Schedule of Events

MTHA Meeting 5:00 p.m. Friday, April 26
Sale 11:30 a.m., Saturday April 27

Lunch will be available.

Hotels at I-65, Exit 108

Comfort Inn (615) 581-0040
Holiday Inn Express (615) 672-7200
Days Inn (615) 672-3746

GPS Address:

8639 TN Hwy 25, Cross Plains, TN 37049

Directions:

I-65 North to exit 112. Turn left onto Hwy 25 west. In 1/4 mile, turn left onto Fortland Drive (at Mapco store).

I-65 South to exit 112. Turn right onto Hwy 25 west. In 1/4 mile, turn left onto Fortland Drive.

MTHA Officers

Stan East, President
Jerry Roberson, Vice President
Billy Jackson, Secretary-Treasurer

MTHA Board of Directors

Rachel Chute
Ryan Underwood
Caleb Wix

Sale Management

Mitch & Kathryn Ingram
Madisonville, TN 37354
katingram.123@gmail.com
(423) 337-1383

1
Cow
CHF ROBBIE 144F 76K {DBP}
P44424115 BD: 6/8/22 BE: 76K

NJW 160Z 10W WHIT 33B (DLF,HYF,IEF,MSUDF,MDF,DBF)
NJW 84B 33B ROB 144F ET (DLF,HYF,IEF,MDF,DBF)
NJW 16S 100W JOEY 84B ET (DLF,HYF,IEF,MSUDF,MDF)

LJR 023R WHITMORE 10W (SOD)(DLF,HYF,IEF,MSUDF,MDF,DBF)
NJW 73S 88X DAYDREAM 160Z (DOD)(DLF,HYF,IEF,MSUDF,MDF)
NJW 73S M326 TRUST 100W ET (SOD)(CHB)(DLF,HYF,IEF,MSUDF,MDF,DBF)
TLELL 117F JOEY 16S (DLF,HYF,IEF)

BOYD LEGACY 3001 (DLF,HYF,IEF,MDF,DBF)
CHF FRAN 3001 05F (DBP)
CHF REVIT UP X69 36Z (DBP)

AH JDH CRACKER JACK 26U ET (SOD)(CHB)(DLF,HYF,IEF,MDF)
MSU APOLLONIA 37X ET (DLF,HYF,IEF,DBP)
KCF BENNETT REVOLUTION X69 (CHB)(DBP)
CHF SUNRISE VICKY 262D 424

BMI	\$302																			
BII	\$372	CE	BW	WW	YW	DMI	SC	SCF	MM	MG	MCE	MCW	UDDR	TEAT	CW	FAT	REA	MARB		
CHB	\$113	5.1	2.5	59	97	0.3	1.0	13.0	30	59	3.9	103	1.30	1.20	69	0.012	0.36	0.06		

- A really nice dark red Rob daughter. She stems from a long line of pretty uddered females. Should be a really nice cow prospect.
- AI bred on 1/30/23 to KCF BENNETT MONUMENT J338. Pasture exposed to CSC 817 HAYDAY 210 from 12/14/23 through 3/19/24.
- Consigned by Clifford Farms, Lincoln Clifford, Cynthiana, KY

2
Cow
CHF ROBBIE 144F 81K {HYP}
P44424835 BD: 8/6/22 BE: 81K

NJW 160Z 10W WHIT 33B (DLF,HYF,IEF,MSUDF,MDF,DBF)
NJW 84B 33B ROB 144F ET (DLF,HYF,IEF,MDF,DBF)
NJW 16S 100W JOEY 84B ET (DLF,HYF,IEF,MSUDF,MDF)

LJR 023R WHITMORE 10W (SOD)(DLF,HYF,IEF,MSUDF,MDF,DBF)
NJW 73S 88X DAYDREAM 160Z (DOD)(DLF,HYF,IEF,MSUDF,MDF)
NJW 73S M326 TRUST 100W ET (SOD)(CHB)(DLF,HYF,IEF,MSUDF,MDF,DBF)
TLELL 117F JOEY 16S (DLF,HYF,IEF)

BOYD BEEF 17Y 4302 ET (DLF,HYF,IEF,MDF,DBF)
CHF MAYBELLE BEEF 55E (HYP)
CHF SUNRISE LASS 30U (HYP)

TH 22R 16S LAMBEAU 17Y (SOD)(DLF,HYF,IEF,MSUDF,MDF)
MSU APOLLONIA 37X ET (DLF,HYF,IEF,DBP)
SSF P606 VICTOR 784 (HYP)
CHF MISS PAYDAY 17Z 805 (HYP)

BMI	\$348																			
BII	\$419	CE	BW	WW	YW	DMI	SC	SCF	MM	MG	MCE	MCW	UDDR	TEAT	CW	FAT	REA	MARB		
CHB	\$93	2.0	3.6	58	95	0.3	0.9	17.3	32	61	3.4	98	1.20	1.30	57	-0.008	0.24	0.03		

- This female comes from one of our favorite cow families. Her dam and grandam have been exceptional producers for us.
- AI bred on 11/28/23 to KCF BENNETT MONUMENT J338. Pasture exposed to CSC 817 HAYDAY 210 from 12/14/23 through 3/1/24.
- Consigned by Clifford Farms, Lincoln Clifford, Cynthiana, KY

3
Cow
CHF STRONG 9097 100K
P44424853 BD: 9/13/22 BE: 100K

NJW 84B 10W JOURNEY 53D (DLF,HYF,IEF,MSUDF,MDF,DBF)
THM ARMSTRONG 9097 ET (DLF,HYF,IEF,MSUDF,MDF,DBF)
THM 163M MARCIE 9531 (DLF,HYF,IEF)

LJR 023R WHITMORE 10W (SOD)(DLF,HYF,IEF,MSUDF,MDF,DBF)
NJW 16S 100W JOEY 84B ET (DLF,HYF,IEF,MSUDF,MDF)
STAR 8006 ENYETO 163M ET (SOD)(DLF,HYF,IEF)
THM KELLY 29F 3043 (DLF,HYF,IEF)

THM DEACON 5022 ET (DLF,HYF,IEF,MSUDF)
CHF DEACON YETTY 5022 70G
THM 8859 YETTA 2120

MOHICAN THM EXCEDE 2426 (SOD)(DLF,HYF,IEF,MSUDF,MDF,DBF)
JLG VICTRA 163M 5628 (DLF,HYF,IEF)
THM HEARTLAND 8859 ET (DLF,HYF,IEF,MSUDF)
THM 205M YETTA 0633 ET

BMI	\$380																			
BII	\$447	CE	BW	WW	YW	DMI	SC	SCF	MM	MG	MCE	MCW	UDDR	TEAT	CW	FAT	REA	MARB		
CHB	\$99	1.6	2.9	53	87	0.2	1.2	19.3	24	50	3.8	83	1.30	1.40	65	0.042	0.27	0.01		

- We really like our Armstrong females and this girl is no exception. Her grandam is still producing strong for us. Longevity describes this female.
- Pasture exposed to CSC 817 HAYDAY 210 from 12/14/23 through 3/1/24.
- Consigned by Clifford Farms, Lincoln Clifford, Cynthiana, KY

4
Cow
CHF WH KHLOE 6913 109K {HYP}
44525753 BD: 10/11/22 BE: 109K

NJW 73S W18 HOMETOWN 10Y ET (SOD)(CHB)(DLF,HYF,IEF,MSUDF,MDF)
HH HOPTOWN 6913 ET (DLF,HYF,IEF,MSUDF,MDF)
TH 7N 45P RITA 71U (DLF,HYF,IEF)

SHF WONDER M326 W18 ET (SOD)(CHB)(DLF,HYF,IEF,MDF,DBF)
NJW P606 72N DAYDREAM 73S (DLF,HYF,IEF,MSUDF,MDF)
NJW FHF 9710 TANK 45P (SOD)(DLF,HYF,IEF,MDF)
TH 814H 3L RITA 7N (DOD)(DLF,HYF,IEF)

EFBEEF HPB N093 PROFICIENT A278 (DLF,HYF,IEF,MSUDF)
JLCS A278 SUNNY B47 D49 (HYP)
JLCS 28P SUNNY Y62 B47 (HYP)

EFBEEF SCHU-LAR PROFICIENT N093 (SOD)(DLF,HYF,IEF,MSUDF)
EFBEEF P230 KATE X623 (DLF,HYF,IEF)
NJW 120J BOULDER 28P ET (DLF,HYF,IEF)
JLCS 619 SUNNY 5141 Y62 (HYP)

BMI	\$375																			
BII	\$442	CE	BW	WW	YW	DMI	SC	SCF	MM	MG	MCE	MCW	UDDR	TEAT	CW	FAT	REA	MARB		
CHB	\$104	3.4	2.4	48	76	0.1	1.0	18.9	30	54	-2.9	61	1.20	1.20	62	0.012	0.26	0.11		

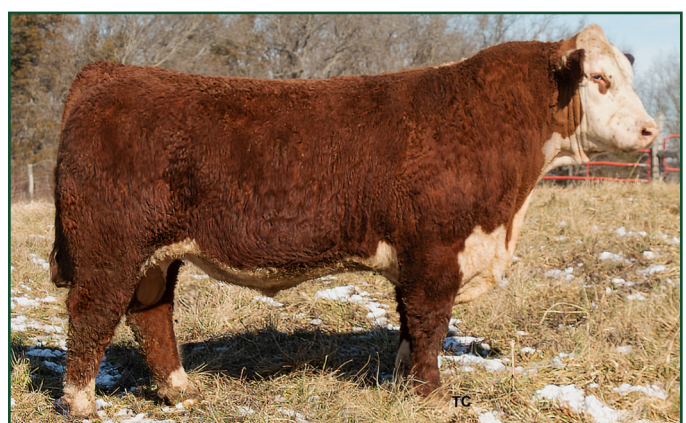
- A really nice HOPTOWN daughter we think has unlimited cow potential. She is out of a really good cow we purchased from our good friends at J&L cattle services in Ohio. If she's anything like her mother, you will love this female and her milk flow when wet.
- Serviced by AI to NJW 119E 87G ENDORSEMENT 216J (44272851) on 3/16/24. Horned.
- Consigned by Clifford Farms, Lincoln Clifford, Cynthiana, KY



KCF BENNETT MONUMENT J338 – Service Sire for Lots 1-2



NJW 84B 33B ROB 144F ET – Sire of Lots 1-2



CSC 817 HAYDAY 210 – Pasture Service Sire for Lots 1-3



NJW 119E 87G ENDORSEMENT 216J – Service Sire of Lot 4



Lot 5 – JF J035 TRADITION 2406



APPLAUSE 2004 – Sire of Lot 6A and Service Sire of Lot 5



KT SMALL TOWN KID 5051 – Sire of Lot 7

5
Cow

JF F051 HISTORIC J037 {DLF, HYF, IEF, MSUDF}
P44302606 BD: 9/9/21 RE: JF LE: J037

NJW 160B 028X HISTORIC 81E ET {DLF, HYF, IEF, MSUDF, MDF, DBF}
NJW 20D 81E HISTORIC 151G {DLF, HYF, IEF, MSUDF, MDF}
 NJW 92B 10W VACA 20D {DLF, HYF, IEF, MSUDF}



BOYD 31Z BALANCE 5120 {CHB} {DLF, HYF, IEF, MSUDF}
JF 1358 BALANCE F051 {HYP}
 JF RACHEL 863S 1358 {HYP}

CHURCHILL SENSATION 028X {SOD} {DLF, HYF, IEF, MDF, DBF}
 NJW 73S 38W DAYDREAM 160B {DLF, HYF, IEF, MSUDF}
 LJR 023R WHITMORE 10W {SOD} {DLF, HYF, IEF, MSUDF, MDF, DBF}
 NJW 5S 109Z VACA 92B {DLF, HYF, IEF, MSUDF}

KCF BENNETT ENCORE Z311 ET {SOD} {CHB} {DLF, HYF, IEF, MSUDF, MDF, DBF}
 NJW 91H 100W RITA 31Z ET {DLF, HYF, IEF}
 CMF 526J WILSON 863S {DLF, HYF, IEF}
 CMF 598L RACHEL 765P {HYP}

BMI	\$458																	
BII	\$535	CE	BW	WW	YW	DMI	SC	SCF	MM	MG	MCE	MCW	UDDR	TEAT	CW	FAT	REA	MARB
CHB	\$115	6.2	0.4	58	93	0.3	1.3	23.6	37	66	4.9	72	1.30	1.30	72	0.012	0.44	0.07

- This will be as good a pair as we have ever sold!
- Pasture exposed to Boyd Applause (P44356918) from 4/2/23 to 7/2/23. Should calve before sale day.
- Consigned by Jackson Farms, Billy Jackson, Cross Plains, TN

6
Cow

JF 1219 TRADITION J035 {DLF, HYF, IEF, MSUDF, DBP}
P44302604 BD: 9/8/21 RE: JF LE: J035

BOYD 31Z BLUEPRINT 6153 {DLF, HYF, IEF, MSUDF, MDF, DBF}
BOYD BLUE JAY 9048 {DLF, HYF, IEF, MSUDF, MDF, DBP}
 FSL LADY REV 4R 11X 22C {HYP, DBP}



NJB 30N LIMITED SUPPLY 947
JF VICTORIA 947 1219 {HYP}
 JF VICTORIA 01L 0542 {DOD} {HYP}

R LEADER 6964 {SOD} {DLF, HYF, IEF, MSUDF, DBF}
 NJW 91H 100W RITA 31Z ET {DLF, HYF, IEF}
 MSU TCF REVOLUTION 4R {SOD} {DLF, HYF, IEF, MDF, DBP}
 FSL MISS DURY 4037 11X {HYP}

NJB964 LIMITED SUPPLY ET {DLF, HYF, IEF}
 C&L NJB BELLE 30N {DLF, HYF, IEF}
 ANHINGA VIC H82 01L {SOD} {HYP}
 AF VICTORIA S84 K26 {HYP}

BMI	\$334																	
BII	\$408	CE	BW	WW	YW	DMI	SC	SCF	MM	MG	MCE	MCW	UDDR	TEAT	CW	FAT	REA	MARB
CHB	\$132	11.2	-0.1	46	85	-0.1	1.5	14.6	24	47	5.2	88	1.10	1.10	56	0.022	0.40	0.31

- This Blue Print Granddaughter is excellent in every way! Young Fertile, balanced EPDs, tremendous milk flow and front pasture beauty!
- Has herd bull prospect at side, Lot 6A JF J035 TRADITION 2406 (P44534748), 65 lb. BW. Sired by Boyd Applause 2004 (P44356918), the high selling bull in the 2023 Boyd Bull Sale.
- Sells open.
- Consigned by Jackson Farms, Billy Jackson, Cross Plains, TN

7
Cow

RR 38G 5051 JADE 310J {MDP, DBP}
P44302102 BD: 4/3/21 BE: 310J

NJW 73S W18 HOMETOWN 10Y ET {SOD} {CHB} {DLF, HYF, IEF, MSUDF, MDC, DBF}
KT SMALL TOWN KID 5051 {SOD} {CHB} {DLF, HYF, IEF, MSUDF, MDC, DBF}
 KT MS 0124 TIMES A WASTIN 2086 {DOD} {DLF, HYF, IEF}

SHF WONDER M326 W18 ET {SOD} {CHB} {DLF, HYF, IEF, MDC, DBF}
 NJW P606 72N DAYDREAM 73S {DLF, HYF, IEF, MSUDF, MDF}
 RST TIMES A WASTIN 0124 {SOD} {DLF, HYF, IEF}
 KT MS K085 PROSPECTOR 4016 {DOD} {DLF, HYF}

UPS SENSATION 2504 ET {SOD} {DLF, HYF, IEF, MSUDF, MDF}
RR 36C 2504 PENNY 38G {DBP}
 RR 34Y 4R PENNY 36C {DBP}

CHURCHILL SENSATION 028X {SOD} {DLF, HYF, IEF, MDF, DBF}
 NJW BW LADYSPORT DEW 78P ET {DLF, HYF, IEF}
 MSU TCF REVOLUTION 4R {SOD} {DLF, HYF, IEF, MDF, DBP}
 RR 689 PENNY 492 34Y {DBP}

BMI	\$424																	
BII	\$515	CE	BW	WW	YW	DMI	SC	SCF	MM	MG	MCE	MCW	UDDR	TEAT	CW	FAT	REA	MARB
CHB	\$143	6.8	1.5	71	115	0.8	1.4	19.7	31	67	2.7	104	1.40	1.40	90	0.022	0.77	0.16

- Long bodied attractive female.
- Sells bred to K3 15E 316 Mud Hole 041 (P44285807) to calve late spring early summer.
- Consigned by Gene Steiner Management Co., Inc., Gene Steiner, Lebanon, OH

9
Cow

BRI 504 STARLIGHT 1021J {DBP}
P44298188 BD: 10/2/21 RE: BRI LE: 1021J

CHURCHILL SENSATION 028X {SOD} {DLF, HYF, IEF, MSUDF, MDF}
NS CHARGE ON 504 {CHB} {DLF, HYF, IEF, MSUDF, DBP}
 NS M326 KAEYLA ET 823 {DLF, HYF, IEF, DBP}

UPS DOMINO 3027 {SOD} {CHB} {DLF, HYF, IEF, MSUDF, MDF}
 CHURCHILL LADY 7202T ET {DLF, HYF, IEF}
 KCF BENNETT 3008 M326 {SOD} {CHB} {DLF, HYF, IEF, MDF, DBF}
 BECKLEYS 122L KAEYLA 796P ET {DLF, HYF, IEF, DBP}

ELZE 4R JD 9Y {DLF, HYF, IEF, DBP}
ELZE 9Y FELLISITY 25A {DBP}
 EFBEEF N014 FELLISITY U309

MSU TCF REVOLUTION 4R {SOD} {DLF, HYF, IEF, MDF, DBP}
 ELZE P606 SPOOKIE 4S {DOD}
 EF K334 CROWN BEEF N014 {SOD} {CHB} {DLF, HYF, IEF, MSUDF}
 EF F745 FELLISITY L559

BMI	\$366																	
BII	\$444	CE	BW	WW	YW	DMI	SC	SCF	MM	MG	MCE	MCW	UDDR	TEAT	CW	FAT	REA	MARB
CHB	\$127	1.7	1.7	52	83	0.1	1.2	16.8	28	54	3.4	73	1.10	1.10	66	0.022	0.48	0.25

- Sells with bull calf, Lot 9A at side by K3 15E 316 Mud Hole 041 (P44285807). Calved 3/1/24, BW 69 lb.
- Sells open.
- Consigned by Gene Steiner Management Co., Inc., Gene Steiner, Lebanon, OH

8
Cow

RR 410B 34F BRIANNA 92H {HYP, DBP}
P44286073 BD: 9/30/20 BE: 92H

UPS SENSATION 2504 ET {SOD} {DLF, HYF, IEF, MSUDF, MDF}
RR 36C 2504 FITZGERALD 34F {DLF, HYF, IEF, MSUDF, DBP}
 RR 34Y 4R PENNY 36C {DBP}

CHURCHILL SENSATION 028X {SOD} {DLF, HYF, IEF, MDF, DBF}
 NJW BW LADYSPORT DEW 78P ET {DLF, HYF, IEF}
 MSU TCF REVOLUTION 4R {SOD} {DLF, HYF, IEF, MDF, DBP}
 RR 689 PENNY 492 34Y {DBP}

RR 64R YALE P606 21Y {DLF, HYF, IEF}
RR 32Y 21Y BRIANNA 410B {HYP}
 RR 44U URSULA 005 32Y {HYP}

PW VICTOR BOOMER P606 {SOD} {DLF, HYF, IEF, MDF}
 GPR DS LADY 64R {HYP}
 NS KENO 005 {DLF, HYF, IEF}
 RR S03 URSULA 33S 44U {HYP}

BMI	\$300																	
BII	\$368	CE	BW	WW	YW	DMI	SC	SCF	MM	MG	MCE	MCW	UDDR	TEAT	CW	FAT	REA	MARB
CHB	\$88	0.0	3.7	62	99	0.4	1.6	14.2	32	63	2.2	92	1.30	1.10	57	-0.028	0.28	-0.02

- Sells with heifer calf, Lot 8A at side by K3 15E 316 Mud Hole 041 (P44285807). Calved 2/2/24, BW 76 lb.
- Big ribbed Fitzgerald daughter with lots of power.
- Sells open.
- Consigned by Gene Steiner Management Co., Inc., Gene Steiner, Lebanon, OH

10 **SWEET KEEP GOING 43H** *{DLF, HYF, IEF, MSUDF, MDF, DBC}*
P44275228 **BD: 10/3/20** **RE: 43H** **LE: ST**

Cow
 NJW 73S W18 HOMETOWN 10Y ET (SOD)(CHB)(DLF, HYF, IEF, MSUDF, MDF, DBC)
GRASSY RUN ENDEAVOR 7004 ET (DLF, HYF, IEF, MSUDF, MDF, DBC)
 MSU TCF RACHAEL ET 54N (DLF, HYF, IEF, DBP)

SHF WONDER M326 W18 ET (SOD)(CHB)(DLF, HYF, IEF, MSUDF, MDF, DBC)
 NJW P606 72N DAYDREAM 73S (DLF, HYF, IEF, MSUDF, MDF, DBC)
 REMITALL ONLINE 122L (SOD)(CHB)(DLF, HYF, IEF, DBC)
 HH MISS ADV 786G 1ET (IEP)

AFIA
GEEPD
 BECKLEY 743 CLOCKWORK 0352 ET (HYP, DBP)
SWEET THIRD TIMES THE CHARM25A (HYP, DBP)
 SWEET TRES 911

CRR ABOUT TIME 743 (SOD)(DLF, HYF, IEF, MDF)
 BECKLEYS 122L KAYELA 799P ET (HYP, DBP)
 WESTWIND JWR TUNDRA 148R (DLF, HYF, IEF)
 SWEET DONA 407

BMI	\$332																	
BII	\$408	CE	BW	WW	YW	DMI	SC	SCF	MM	MG	MCE	MCW	UDDR	TEAT	CW	FAT	REA	MARB
CHB	\$132	5.1	3.4	65	108	0.4	1.2	14.0	31	63	1.6	96	1.10	1.10	80	0.002	0.55	0.07

- A nice, moderate framed frame cow that proves her maternal ability with her bull calf at side.
- AI bred on 12/10/23 to NJW 129E 173D Endure 92H ET (P44169666). Pasture exposed from 12/29/23 to 1/25/24 to our Historic son, THM 81E Tank 1159 ET (P44335819).
- Consigned by Underwood Farms, Doug & Darrelyn Underwood, Campbellsville, KY



Lot 10 – SWEET KEEP GOING 43H

10A **RYAN'S GUS R091** *{DLF, HYF, IEF, MSUDF, MDF, DBC}*
P44521612 **BD: 9/13/23** **BE: U091**

Bull
 F FINAL TEST 722 (CHB)(DLF, HYF, IEF, MSUDF, MDF, DBF)
WLKR CRCH GAP 722 427B 9626 ET (DLF, HYF, IEF, MSUDF, MDF, DBF)
 WALKER BETH X51 Y479 427B (DLF, HYF, IEF)

EFBEEF TFL U208 TESTED X651 ET (SOD)(CHB)(DLF, HYF, IEF, MSUDF)
 F MS YORK 567 (DOD)(DLF, HYF, IEF, MSUDF)
 KCF BENNETT REVOLUTION X51 (SOD)(CHB)(DLF, HYF, IEF, MSUDF, DBF)
 GRNDVIEW CMR BETH 156T Y479 ET (DLF, HYF, IEF, MSUDF)

AFIA
GEEPD
 GRASSY RUN ENDEAVOR 7004 ET (DLF, HYF, IEF, MSUDF, MDF, DBP)
SWEET KEEP GOING 43H (DLF, HYF, IEF, MSUDF, MDF, DBC)
 SWEET THIRD TIMES THE CHARM25A (HYP, DBP)

NJW 73S W18 HOMETOWN 10Y ET (SOD)(CHB)(DLF, HYF, IEF, MSUDF, MDF, DBC)
 MSU TCF RACHAEL ET 54N (DLF, HYF, IEF, DBP)
 BECKLEY 743 CLOCKWORK 0352 ET (HYP, DBP)
 SWEET TRES 911

BMI	\$450																	
BII	\$554	CE	BW	WW	YW	DMI	SC	SCF	MM	MG	MCE	MCW	UDDR	TEAT	CW	FAT	REA	MARB
CHB	\$186	6.4	1.2	61	100	0.1	0.8	19.3	23	54	0.2	102	1.40	1.30	86	0.012	0.80	0.51

- A bull calf that will catch your eye and is a herd sire in the making.
- Consigned by Underwood Farms, Doug & Darrelyn Underwood, Campbellsville, KY

12 **UNDERWOOD AUTHORITY U044** *{HYP, DBP}*
P44504489 **BD: 9/18/22** **BE: U044**

Bull
 BOYD 31Z BLUEPRINT 6153 (DLF, HYF, IEF, MSUDF, MDF, DBF)
BOYD POWER SURGE 9024 (DLF, HYF, IEF, MSUDF, MDF, DBF)
 TH 329 358C LANA 76E (DLF, HYF, IEF, MSUDF, MDF, DBF)

R LEADER 6964 (SOD)(DLF, HYF, IEF, MSUDF, DBF)
 NJW 91H 100W RITA 31Z ET (DLF, HYF, IEF)
 TH 403A 475Z PIONEER 358C ET (SOD)(DLF, HYF, IEF, MSUDF)
 FTF 7227 MS LOGIC 329A (DLF, HYF, IEF)

ASM 156T Y-AXIS 206Z (DLF, HYF, IEF, DBP)
UNDERWOOD MISS U725 (HYP, DBP)
 JWR MS VICKY 202-164 (HYP)

CMR GVP MR MATERNAL 156T (SOD)(DLF, HYF, IEF, MSUDF, MDF)
 ASM 122L MISS 705ET (DLF, HYF, IEF, DBP)
 JWR VICTOR 9329 202 (HYP)
 JWR 201 MISS VICTORIA 140 (HYP)

BMI	\$391																	
BII	\$460	CE	BW	WW	YW	DMI	SC	SCF	MM	MG	MCE	MCW	UDDR	TEAT	CW	FAT	REA	MARB
CHB	\$101	-0.5	3.7	60	95	0.2	1.1	19.6	33	63	1.0	75	1.20	1.20	67	0.022	0.39	-0.03

- Will have complete DNA profile by sale day.
- A dark red Power Surge herd bull prospect that is heavy muscled, heavy boned, and has a stacked pedigree full of incredible maternal ability.
- Consigned by Underwood Farms, Doug & Darrelyn Underwood, Campbellsville, KY

13 **UNDERWOOD MISS DYNAMITE U048** *{DLF, HYF, IEF, MSUDF, MDF, DBC}*
P44443310 **BD: 9/28/22** **BE: U048**

Cow
 NJW 79Z 231 ENDURE 173D ET (SOD)(CHB)(DLF, HYF, IEF, MSUDF, MDF, DBF)
NJW 129E 173D ENDURE 92H ET (DLF, HYF, IEF, MSUDF, MDF, DBF)
 NJW 12A 4258 SPIRITQUEEN 129E (DOD)(DLF, HYF, IEF, MSUDF, MDF, DBF)

KCF BENNETT ENCORE Z311 ET (SOD)(CHB)(DLF, HYF, IEF, MSUDF, MDF, DBF)
 BW 91H 100W RITA 79Z ET (DLF, HYF, IEF, MSUDF, MDF)
 UPS HUTTON 4258 ET (DLF, HYF, IEF, MSUDF, MDF, DBP)
 NJW 25W BY SPIRITQUEEN 12A (DLF, HYF, IEF, MSUDF, MDF, DBC)

AFIA
GEEPD
 GRASSY RUN ENDEAVOR 7004 ET (DLF, HYF, IEF, MSUDF, MDF, DBP)
SWEET KEEP GOING 43H (DLF, HYF, IEF, MSUDF, MDF, DBC)
 SWEET THIRD TIMES THE CHARM25A (HYP, DBP)

NJW 73S W18 HOMETOWN 10Y ET (SOD)(CHB)(DLF, HYF, IEF, MSUDF, MDF, DBC)
 MSU TCF RACHAEL ET 54N (DLF, HYF, IEF, DBP)
 BECKLEY 743 CLOCKWORK 0352 ET (HYP, DBP)
 SWEET TRES 911

BMI	\$415																	
BII	\$497	CE	BW	WW	YW	DMI	SC	SCF	MM	MG	MCE	MCW	UDDR	TEAT	CW	FAT	REA	MARB
CHB	\$163	6.6	2.1	70	113	0.4	0.8	17.3	30	65	3.3	122	1.20	1.20	102	0.002	1.03	0.08

- A moderate framed female with maternal ability to follow in her mother's footsteps (Lot 10).
- Breeding information available on sale day.
- Consigned by Underwood Farms, Doug & Darrelyn Underwood, Campbellsville, KY

11 **RYAN'S KAMI R112** *{DLF, HYF, IEF, MSUDF, MDF, DBF}*
P44523807 **BD: 9/28/22** **BE: R112**

Cow
 F FINAL TEST 722 (CHB)(DLF, HYF, IEF, MSUDF, MDF, DBF)
WLKR CRCH GAP 722 427B 9626 ET (DLF, HYF, IEF, MSUDF, MDF, DBF)
 WALKER BETH X51 Y479 427B (DLF, HYF, IEF)

EFBEEF TFL U208 TESTED X651 ET (SOD)(CHB)(DLF, HYF, IEF, MSUDF)
 F MS YORK 567 (DOD)(DLF, HYF, IEF, MSUDF)
 KCF BENNETT REVOLUTION X51 (SOD)(CHB)(DLF, HYF, IEF, MSUDF, DBF)
 GRNDVIEW CMR BETH 156T Y479 ET (DLF, HYF, IEF, MSUDF)

AFIA
GEEPD
 PERKS CATO 4063 GOOD TIMES6090 (DLF, HYF, IEF, MSUDF, MDF, DBP)
RYAN'S KAMILA R060 (HYP, MDP, DBP)
 RYAN'S KANDY R014 (HYP)

LOEWEN 33T 19W (DLF, HYF, IEF, DBP)
 PERKS 0509 HER TOWN 4063ET (DLF, HYF, IEF, MSUDF, MDF, DBP)
 SCHU-LAR ON TARGET 22S (SOD)(CHB)(DLF, HYF, IEF, MSUDF, MDF, DBF)
 UNDERWOOD PEACHES U315 (HYP)

BMI	\$388																	
BII	\$490	CE	BW	WW	YW	DMI	SC	SCF	MM	MG	MCE	MCW	UDDR	TEAT	CW	FAT	REA	MARB
CHB	\$183	-2.5	3.6	68	116	0.2	0.7	15.2	17	51	-3.2	124	1.30	1.20	86	-0.028	0.67	0.43

- A female with growth, length and frame that has excellent production potential.
- Pasture exposed from 12/29/23 to 1/25/24 to our Historic son, THM 81E Tank 1159 ET (P44335819).
- Consigned by Underwood Farms, Doug & Darrelyn Underwood, Campbellsville, KY



BOYD POWER SURGE 9024 – Sire of Lot 12

14 **RSC BILLY 2211**
P44338385 **BD: 3/8/22** **LE: 2211**

Cow
 NJW 76S 88X CIRCLEBOSS 157C ET (DLF, HYF, IEF, MSUDF)
RSC JAMES BLAZE BOSS C25 (DLF, HYF, IEF, MSUDF)
 DS8 406Z 0124 VICTORIA 142C (DLF, HYF, IEF, MSUDF)

NJW 98S R177 RIBEYE 88X ET (SOD)(DLF, HYF, IEF, MSUDF, MDF, DBF)
 NJW 55N STARDUST 76S (DLF, HYF, IEF, MSUDF, MDF)
 RST TIMES A WASTIN 0124 (SOD)(DLF, HYF, IEF)
 DMR VICTORIA 406Z ET

RSC KING ROYAL A54 ET (DLF, HYF, IEF)
RSC TILLIE ONE C26
 RSC MISS BABBLER A35 (DOD)

ALH WS KING TEN 8201 ET (SOD)(DLF, HYF, IEF)
 LAGRAN QUEEN 133P ET (DLF, HYF, IEF)
 RSC RACHELS ZEUS E39 (DLF, HYF, IEF)
 GV CMR 1L BETH 0109 A347 ET (DLF, HYF, IEF)

BMI	\$309																	
BII	\$371	CE	BW	WW	YW	DMI	SC	SCF	MM	MG	MCE	MCW	UDDR	TEAT	CW	FAT	REA	MARB
CHB	\$105	-0.3	4.5	55	91	0.1	0.9	13.9	21	48	-2.4	91	1.20	1.30	64	0.002	0.42	0.00

- 2211 comes from our foundation cow family. Royally bred, she tracks back to King 10 and Beth 1L. She is bred to our Manifest son. She is a rare opportunity.
- Exposed to 44284711 5/12/23 through 9/30/23. Pasture exposed to RSC BAXTER 2131 (44338369) 10/1/23 through 11/6/23.
- Consigned by Chute Farm Polled Herefords, Randy Chute, Woodburn, KY



RMB 87G 618G WHITLOCK 133K – Service Sire for Lots 15-16

16 **CROUCH JANIE 68E 723 151** [DLF, HYF, IEF, MSUDF, DBP]
Cow P44318728 BD: 10/8/21 LE: 151

NJW 79Z 22Z WOW 57C ET (DLF, HYF, IEF, MSUDF)
 NJW 144Y 57C WOW 68E (DLF, HYF, IEF, MSUDF)
 NJW 69S 38W BEEFY ANGIE 144Y (DLF, HYF, IEF, MSUDF)
 JC HOMETOWN VICTOR 343A ET (CHB) [DLF, HYF, IEF, MDP]
CROUCH EMILIA 343A 333Z 723 (DLF, HYF, IEF, MDP, DBP)
 ADE 254S KELLI 333Z (HYF, IEF, DBP)

NJW 67U 28M BIG MAX 22Z (DLF, HYF, IEF, MDP)
 BW 91H 100W RITA 79Z ET (DLF, HYF, IEF, MSUDF, MDP)
 NJW 76S P2O BEEF 38W ET (SOD) [DLF, HYF, IEF, MSUDF, MDP]
 RPH ANGIE 69S (DLF, HYF, IEF)

NJW 73S W18 HOMETOWN 10Y ET (SOD) [CHB] [DLF, HYF, IEF, MSUDF, MDP]
 WPHF 4057 VICTRA 9329 133 (DLF, HYF, IEF)
 KJCL CSR WINCHESTER 254S ET (DBP)
 ADE R32 KELLI 802U (HYF, IEF)

BMI	\$330																	
BII	\$395	CE	BW	WW	YW	DMI	SC	SCF	MM	MG	MCE	MCW	UDDR	TEAT	CW	FAT	REA	MARB
CHB	\$115	2.9	1.9	52	87	0.3	1.2	15.1	31	57	0.4	56	1.20	1.30	72	0.022	0.59	0.07

- Very nice young first calf heifer, dark red. Will be a great addition to any herd. Doing a good job raising her bull calf.
- Pasture exposed to RMB 87G 618G Whitlock 133K (P44332589) our herd bull that we own with Webster Polled Herefords. Exposed from December 2, 2023 till March 31, 2024.
- Consigned by East Polled Herefords, Stan East, Carthage, TN



Lot 17 – FSL MISS PROV B284 15E 26H



CLC 173D ENDURE 129E 68J ET – Service Sire of Lot 17

15 **SW GINGER 400 22**
Cow P44377103 BD: 2/25/22 BE: 400

TH 22R 16S LAMBEAU 17Y (SOD) [DLF, HYF, IEF, MSUDF, MDP]
 BOYD FT KNOX 17Y XZ5 4040 (DLF, HYF, IEF, MSUDF, MDP, DBF)
 DOSS MY EYES ADORE U DHZ5 (DLF, HYF, IEF, DBP)

TH 121L 63N TUNDRA 16S (DLF, HYF, IEF)
 TH 62N 3L KELSEY 22R (DLF, HYF, IEF)
 BOYD WORLDWIDE 9050 ET (SOD) [DLF, HYF, IEF, MSUDF, MDP, DBF]
 DHF COVER GIRL C902 (DBP)

MOHICAN THM EXCEDE 2426 (SOD) [DLF, HYF, IEF, MSUDF, MDP, DBF]
 SW KATIE 326 18
 SW LADY TRADITION 173 10

TH 133U 719T UPGRADE 69X (SOD) [DLF, HYF, IEF]
 NJW M326 UNFORGETTABLE 76W ET (DLF, HYF, IEF)
 BAR JZ TRADITIONS LEGEND 463S (DLF, HYF, IEF)
 SW MARGARET 139 08

BMI	\$382																	
BII	\$448	CE	BW	WW	YW	DMI	SC	SCF	MM	MG	MCE	MCW	UDDR	TEAT	CW	FAT	REA	MARB
CHB	\$99	4.2	1.9	54	86	0.1	0.8	19.3	23	50	-0.1	89	1.40	1.40	64	0.032	0.30	0.00

- Everyone knows Ft. Knox daughters make fantastic mothers. Ginger will be no exception. She's fully pigmented and conservatively marked.
- She sells pasture exposed 6/16/23 through 11/30/23 to RMB 87G 618G Whitlock 133K (P44332589) our 77Walk-Off 60D 87G son which we purchased with East Polled Herefords in the 2023 Chapman Sale. This should prove to be a fantastic mating. Safe in calf.
- Consigned by Webster Polled Herefords, Stan Webster, Chestnut Mound, TN

16A **EPH ROLL TIDE 385 2305** [DBP]
Bull P44513562 BD: 9/12/23 BE: 2305

BEHM 100W CUDA 504C (SOD) [CHB] [DLF, HYF, IEF, MSUDF, MDP, DBF]
 SW PALADIN 385 21 (DLF, HYF, IEF, MSUDF, MDP)
 SW HELEN 224 13 (DOD) [HYF]

NJW 73S M326 TRUST 100W ET (SOD) [CHB] [DLF, HYF, IEF, MSUDF, MDP, DBF]
 BEHM R294 JASMAN102Y (DOD) [DLF, HYF, IEF, MSUDF]
 7 OAKS PRINCE 10R
 SW ADRIENNE 143 08 (HYF)

NJW 144Y 57C WOW 68E (DLF, HYF, IEF, MSUDF)
CROUCH JANIE 68E 723 151 (DLF, HYF, IEF, MSUDF, DBP)
 CROUCH EMILIA 343A 333Z 723 (DLF, HYF, IEF, MDP, DBP)

NJW 79Z 22Z WOW 57C ET (DLF, HYF, IEF, MSUDF)
 NJW 69S 38W BEEFY ANGIE 144Y (DLF, HYF, IEF, MSUDF)
 JC HOMETOWN VICTOR 343A ET (CHB) [DLF, HYF, IEF, MDP]
 ADE 254S KELLI 333Z (HYF, IEF, DBP)

BMI	\$380																	
BII	\$463	CE	BW	WW	YW	DMI	SC	SCF	MM	MG	MCE	MCW	UDDR	TEAT	CW	FAT	REA	MARB
CHB	\$141	8.2	0.7	56	89	0.2	1.2	17.2	33	61	4.3	60	1.20	1.30	72	0.002	0.48	0.28

- Dark red bull calf out of a Stan Webster raised bull. SW Paladin 385 21, he's a Cuda son.
- Consigned by East Polled Herefords, Stan East, Carthage, TN

17 **FSL MISS PROV B284 15E 26H**
Cow P44120056 BD: 1/12/20 LE: 26H

HYALITE ON TARGET 936 (SOD) [CHB] [DLF, HYF, IEF, MSUDF, MDP, DBF]
 KCF BENNETT PROVIDENT B284 (CHB) [DLF, HYF, IEF, MSUDF, MDP, DBF]
 KCF MISS REVOLUTION Z280 ET (DLF, HYF, IEF, MDP, DBF)

SCHU-LAR ON TARGET 22S (SOD) [CHB] [DLF, HYF, IEF, MSUDF, MDP, DBF]
 HYALITE TS LASS 310 (DLF, HYF, IEF)
 MSU TCF REVOLUTION 4R (SOD) [DLF, HYF, IEF, MDP, DBF]
 KCF MISS PROFICIENT U201 (DLF, HYF, IEF, MSUDF, MDP)

ILR RED POWER 456B (SOD) [DLF, HYF, IEF, MSUDF, MDP, DBF]
FSL POWER LADY 456B 15B 15E (DLF, HYF, IEF)
 FSL MISS DURY 44U 20R 15B (DLF, HYF, IEF)

CHURCHILL RED BULL 200Z (SOD) [DLF, HYF, IEF, MSUDF, MDP, DBF]
 KCF MISS PROFICIENT U201 (DLF, HYF, IEF, MSUDF, MDP)
 NJW 98S DURANGO 44U (SOD) [DLF, HYF, IEF]
 FSL LADY P606 20R (DOD) [HYF]

BMI	\$378																	
BII	\$460	CE	BW	WW	YW	DMI	SC	SCF	MM	MG	MCE	MCW	UDDR	TEAT	CW	FAT	REA	MARB
CHB	\$126	4.6	2.3	62	87	0.2	1.7	17.0	29	60	6.7	86	1.10	1.20	72	0.022	0.76	0.19

- This is the best cow/calf pair we have ever brought to a sale. We purchased Miss Prov as a heifer at Boyd Beef Cattle. A big, stocky girl, she has produced top tier calves. Her first calf was purchased by a family that wanted to show him, and this calf is even better.
- Pasture exposed to CLC 173D Endure 129E 68J ET (P44342766). Safe in calf, due in early September.
- Consigned by Crawford Farm, Darrell and Anne Crawford, Auburn, KY

17A **CF BLUEPRINT'S JULIANNE 2316** [DBP]
Cow P44498048 BD: 8/17/23 LE: 2316

BOYD 31Z BLUEPRINT 6153 (DLF, HYF, IEF, MSUDF, MDP, DBF)
 CF CRAWFORD BLUEPRINT 1901 (DLF, HYF, IEF, MSUDF, DBP)
 FSL MISS RIBEYE R117 2Z 16C (DLF, HYF, IEF, MSUDF, DBP)

R LEADER 6964 (SOD) [DLF, HYF, IEF, MSUDF, DBF]
 NJW 91H 100W RITA 31Z ET (DLF, HYF, IEF)
 SHF RIB EYE M326 R117 (SOD) [CHB] [DLF, HYF, IEF]
 FSL REVOLUTIONARY MISS 2Z (DBP)

KCF BENNETT PROVIDENT B284 (CHB) [DLF, HYF, IEF, MSUDF, MDP, DBF]
FSL MISS PROV B284 15E 26H
 FSL POWER LADY 456B 15B 15E (DLF, HYF, IEF)

HYALITE ON TARGET 936 (SOD) [CHB] [DLF, HYF, IEF, MSUDF, MDP, DBF]
 KCF MISS REVOLUTION Z280 ET (DLF, HYF, IEF, MDP, DBF)
 ILR RED POWER 456B (SOD) [DLF, HYF, IEF, MSUDF, MDP, DBF]
 FSL MISS DURY 44U 20R 15B (DLF, HYF, IEF)

BMI	\$414																	
BII	\$496	CE	BW	WW	YW	DMI	SC	SCF	MM	MG	MCE	MCW	UDDR	TEAT	CW	FAT	REA	MARB
CHB	\$119	4.0	2.8	65	95	0.2	1.6	20.0	28	61	3.9	83	1.40	1.40	71	0.012	0.62	0.11

- Julianne is a big, beautiful calf who stands out in the pasture.
- The daughter of an outstanding Boyd Blueprint son, she is dark red with excellent EPDs.
- Consigned by Crawford Farm, Darrell and Anne Crawford, Auburn, KY

18 **FB FARMS CHEY WINONA 2312** [DBP]
P44512331 BD: 5/19/23 BE: 2312

Cow

/S MANDATE 66589 ET (CHB)(DLF,HYF,IEF,MSUDF,MDF,DBF)
WF NECESSITY 3009 2169 ET (DLF,HYF,IEF,MSUDF)
THM X51 ZOIE 3009 (DOD)(DLF,HYF,IEF)

R LEADER 6964 (SOD)(DLF,HYF,IEF,MSUDF,DBF)
/S LADY DOMINO 0158X (DLF,HYF,IEF)
KCF BENNETT REVOLUTION X51 (SOD)(CHB)(DLF,HYF,IEF,MDF,DBF)
THM 5076 CHLOE 1092 ET (DLF,HYF,IEF,MSUDF)

CHEZ DANTE 652D ET (DLF,HYF,IEF,MSUDF,MDF,DBF)
FB FARMS CHEZ WINWAN 2102 (DBP)
SW VICORIAS SECRET 255 14

R LEADER 6964 (SOD)(DLF,HYF,IEF,MSUDF,DBF)
R SWEET RED WINE 039 (DLF,HYF,IEF,DBP)
7 OAKS PRINCE 10R
SW LADY'S SECRET 207 12

BMI	\$411																	
BII	\$496	CE	BW	WW	YW	DMI	SC	SCF	MM	MG	MCE	MCW	UDDR	TEAT	CW	FAT	REA	MARB
CHB	\$133	8.5	-0.1	57	88	0.1	1.1	19.4	28	56	3.6	99	1.25	1.35	73	0.062	0.42	0.25

- I never saw a CHEZ DANTE calf that I didn't like and Winona is no exception.
- Her dam is an own daughter of the great CHEZ DANTE 652D ET and out of one of our very best brood cows. Her sire is a son of /S MANDATE- a bull that ranks in the top 10% of the breed for different traits
- Just think about the quality of brood cow that Winona will make! Sells open.
- Consigned by Farris Bottom Farms, Caleb Wix Ronny & Gail Phillips, Hartsville, TN

19 **FB FARMS 1402 ROSEBUD 2121** [HYP]
P44330603 BD: 12/3/21 BE: 2121

Cow

/S MANDATE 66589 ET (CHB)(DLF,HYF,IEF,MSUDF,MDF,DBF)
WF NECESSITY 3009 2169 ET (DLF,HYF,IEF,MSUDF)
THM X51 ZOIE 3009 (DOD)(DLF,HYF,IEF)

R LEADER 6964 (SOD)(DLF,HYF,IEF,MSUDF,DBF)
/S LADY DOMINO 0158X (DLF,HYF,IEF)
KCF BENNETT REVOLUTION X51 (SOD)(CHB)(DLF,HYF,IEF,MDF,DBF)
THM 5076 CHLOE 1092 ET (DLF,HYF,IEF,MSUDF)

WF HAF 8Y JACK E130 ET (DLF,HYF,IEF,MDC)
FB FARMS 1402 BLOSSOM 2002 (HYP,MDF)
FB FARMS TINYS FLOWER (HYP)

NJW 73S W18 HOMEGROWN 8Y ET (SOD)(DLF,HYF,IEF,MSUDF,MDC,DBF)
LPH ROXIE P606 L1003 (DLF,HYF,IEF)
SHF WYATT P20 W193 (DLF,HYF,IEF)
LOF MIS VIC 12F 17S (HYP)

BMI	\$410																	
BII	\$496	CE	BW	WW	YW	DMI	SC	SCF	MM	MG	MCE	MCW	UDDR	TEAT	CW	FAT	REA	MARB
CHB	\$127	4.6	1.6	59	93	0.2	1.2	19.7	28	58	0.2	102	1.20	1.30	72	0.057	0.40	0.22

- This beautiful heifer has always been my favorite of the 2021 fall calf crop.
- Her feminine features catch the eye of every visitor to the farm and her great disposition only enhances her beauty. He calf she is carrying is sure to be a great addition to her value.
- Pasture exposed to WLKR JM BENTON 333 2104K ET (P44354303) from 6/9/23 to 9/30/23. Should calve right around sale date.
- Consigned by Farris Bottom Farms, Caleb Wix Ronny & Gail Phillips, Hartsville, TN

21 **K3 2325 059 PERFECTO 331** [DLP]
P44538946 BD: 3/28/23 LE: 331

Bull

LCX PERFECTO 11B ET (DLF,HYF,IEF,MSUDF)
WF 11B PERFECTO Y21 2325 ET (DLF,HYF,IEF,MSUDF)
GO MS 8050 DOMINO Y21 (DLF,HYF,IEF,MSUDF)

NJW 98S R117 RIBEYE 88X ET (SOD)(DLF,HYF,IEF,MSUDF,MDF,DBF)
WLL ZOIEY 3Z (DLF,HYF,IEF,MDF,DBF)
UPS DOMINO 8050 (SOD)(DLF,HYF,IEF)
GO MS 7195 ADVANCE W9 (DLF,HYF,IEF)

HH LONGMEIER 6918 (DLF,HYF,IEF,MSUDF)
K3 6918 639 DREAM CALLING 059 (DLP)
K3 WC THE CALL 639 (DLP)

CRR 719 CATAPULT 109 (SOD)(DLF,HYF,IEF,MDF)
SHOWTIME LADY 219
C ETF WILDCAT 4248 ET (SOD)(CHB)(DLF,HYF,IEF)
BLAKES MISS IMPRESSIVE 0637 (DLP)

BMI	\$368																	
BII	\$440	CE	BW	WW	YW	DMI	SC	SCF	MM	MG	MCE	MCW	UDDR	TEAT	CW	FAT	REA	MARB
CHB	\$120	6.2	2.1	55	87	-0.1	0.8	16.9	33	61	5.2	89	1.00	1.10	62	-0.018	0.50	0.13

- When you study this bull, it will be hard to find a hole in him. He's soggy and easy keeping. He is thick made with extra turn to the center portion of his rib. Look him up on sale day and we think you will agree.
- Consigned by K3 Cattle, Kyle Bush, Cynthia, KY

22 **K3 2325 104 RED PERFECT 308** [DBP]
P44539054 BD: 1/26/23 LE: 308

Bull

LCX PERFECTO 11B ET (DLF,HYF,IEF,MSUDF)
WF 11B PERFECTO Y21 2325 ET (DLF,HYF,IEF,MSUDF)
GO MS 8050 DOMINO Y21 (DLF,HYF,IEF,MSUDF)

NJW 98S R117 RIBEYE 88X ET (SOD)(DLF,HYF,IEF,MSUDF,MDF,DBF)
WLL ZOIEY 3Z (DLF,HYF,IEF,MDF,DBF)
UPS DOMINO 8050 (SOD)(DLF,HYF,IEF)
GO MS 7195 ADVANCE W9 (DLF,HYF,IEF)

THM MAVERICK 9140 ET (DLF,HYF,IEF,MSUDF)
K3 9140 G174 RED MAVERICK 104 (DBP)
FPH MS RED BULL E4 G174 (DLF,HYF,IEF,MSUDF,DBP)

NJW 84B 10W JOURNEY 53D (DLF,HYF,IEF,MSUDF,MDF,DBF)
THM 755T DAHLIA 6105 ET (DLF,HYF,IEF)
FPH Z21 RED BULL 200Z E4 ET (DLF,HYF,IEF,MSUDF,DBP)
FPH VICKI ENCORE D74 ET

BMI	\$434																	
BII	\$517	CE	BW	WW	YW	DMI	SC	SCF	MM	MG	MCE	MCW	UDDR	TEAT	CW	FAT	REA	MARB
CHB	\$118	5.7	2.3	62	99	0.2	1.1	21.7	31	62	4.6	87	1.00	1.10	66	0.012	0.47	0.14

- Here is a dark red, thick made bull that is going to add value to your herd. You will be impressed at all angles. He combines a smooth front with a rugged, three-dimensional look. Take him home with confidence that he will add value.
- Consigned by K3 Cattle, Kyle Bush, Cynthia, KY



CHEZ DANTE 652D – Grandsire of Lot 18

20 **K3 9140 G174 HOMER 317** [DBP]
P44538945 BD: 2/10/23 LE: 317

Bull

NJW 84B 10W JOURNEY 53D (DLF,HYF,IEF,MSUDF,MDF,DBF)
THM MAVERICK 9140 ET (DLF,HYF,IEF,MSUDF)
THM 755T DAHLIA 6105 ET (DLF,HYF,IEF)

LJR 023R WHITMORE 10W (SOD)(DLF,HYF,IEF,MSUDF,MDF,DBF)
NJW 16S 100W JOEY 84B ET (DLF,HYF,IEF,MSUDF,MDF)
TH 223 71I VICTOR 755T (SOD)(DLF,HYF,IEF,MSUDF,MDF)
THM 4037 BEKKAS DAISY 1069 ET (DLF,HYF,IEF,MSUDF)

FPH Z21 RED BULL 200Z E4 ET (DLF,HYF,IEF,MSUDF,DBP)
FPH MS RED BULL E4 G174 (DLF,HYF,IEF,MSUDF,DBP)
FPH VICKI ENCORE D74 ET

CHURCHILL RED BULL 200Z (SOD)(DLF,HYF,IEF,MSUDF,MDF,DBF)
FPH MS IRENE REVOLUTION Z21 ET (DLF,HYF,IEF,DBP)
KCF BENNETT ENCORE Z311 ET (SOD)(CHB)(DLF,HYF,IEF,MSUDF,MDF,DBF)
FPH MS VIC 128 DURANGO X132 ET (DLF,HYF,IEF)

BMI	\$402																	
BII	\$486	CE	BW	WW	YW	DMI	SC	SCF	MM	MG	MCE	MCW	UDDR	TEAT	CW	FAT	REA	MARB
CHB	\$112	2.8	3.3	64	104	0.6	1.3	20.1	26	59	3.0	97	1.10	1.20	71	0.022	0.43	0.12

- This is a bull that will sure catch your attention. He is high performing and has the extra length of rib that will add pounds to your program.
- He is dark red, deep bodied, and steps out on a solid foot and leg structure.
- Consigned by K3 Cattle, Kyle Bush, Cynthia, KY



WF 11B PERFECTO Y21 2325 ET – Sire of Lots 21-22 and 23A

23 **K3 628 605 STACY 200**
P44539057 BD: 3/4/22 LE: 200

Cow

C ETF WILDCAT 4248 ET (SOD)(CHB)(DLF,HYF,IEF)
K3 WC 13 DREAM ON 628 (DLF,HYF,IEF,MSUDF)
K3 719T CHERRY BLOSSOM13

NJW 73S M326 TRUST 100W ET (SOD)(CHB)(DLF,HYF,IEF,MSUDF,MDF,DBF)
RPH MAIDEN 95T (DLF,HYF,IEF)
TH 122 71I VICTOR 719T (SOD)(DLF,HYF,IEF,MSUDF,MDF,DBF)
ASM 308 28M MISS LEA 142ET

C ETF WILDCAT 4248 ET (SOD)(CHB)(DLF,HYF,IEF)
K3 WC 144 MISS SCRATCH
ASM 308 28M MISS LEA 142ET

NJW 73S M326 TRUST 100W ET (SOD)(CHB)(DLF,HYF,IEF,MSUDF,MDF,DBF)
RPH MAIDEN 95T (DLF,HYF,IEF)
GOLDEN-OAK 4J MAXIUM 28M (SOD)(DLF,HYF,IEF)
KSU MISS 6052F 308 ET (DLF,HYF,IEF)

BMI	\$318																	
BII	\$394	CE	BW	WW	YW	DMI	SC	SCF	MM	MG	MCE	MCW	UDDR	TEAT	CW	FAT	REA	MARB
CHB	\$140	2.5	2.7	60	93	0.2	1.1	12.3	33	63	3.8	105	1.00	1.00	79	-0.018	0.63	0.17

- This pair comes deep from our program. She goes back to the famous 308 cow from Matheny Herdofers. She is long-sided and deep-bodied. She has the look you want and the functionality that you need. Some may say she is the front pasture kind.
- She has a beautiful udder and is doing a great job with her heifer calf, Lot 23A (tattoo 421), out of WF 11B Perfecto Y21 2325 ET (P44240851). Sells open.
- Consigned by K3 Cattle, Kyle Bush, Cynthia, KY



VMHG NOTICABLE 902G – Dam of Lot 24



DCR 48B DOM 9663 – Dam of Lot 25



NJW 98S DURANGO 44U – Sire of Lot 26



Lot 27 – DRS 439 EMMA 05L

24 Cow TDP JILL 93K {DLF,HYF,IEF,MSUDF}

P44351675 BD: 4/3/22 RE: TDP LE: 93K

LCX PERFECTO 11B ET (DLF,HYF,IEF,MSUDF)
 DM ALL AROUND 904G ET (DLF,HYF,IEF,MSUDF,MDF)
 DM L1 DOMINETTE 301 ET (DLF,HYF,IEF,MSUDF)



CHURCHILL KICKSTART 501C ET (SOD)(DLF,HYF,IEF,MSUDF,MDF,DFB)
 VMHG NOTICABLE 902G
 VMHG NOTICABLE E501 ET

NJW 98S R117 RIBEYE 88X ET (SOD)(DLF,HYF,IEF,MSUDF,MDF,DFB)
 WLL ZOEY 3Z (DLF,HYF,IEF,MDF,DFB)
 CL 1 DOMINO 955W (SOD)(DLF,HYF,IEF)
 DM L1 DOMINETTE 901 (DLF,HYF,IEF)
 CHURCHILL RED BULL 200Z (SOD)(DLF,HYF,IEF,MSUDF,MDF,DFB)
 HVH OKSANA 4L 33N (DLF,HYF,IEF,DFB)
 CRR 5280 (DLF,HYF,IEF)
 C 88X NOTICE ME 1311 ET (DLF,HYF,IEF,MDF,DFB)

BMI	\$428	CE	BW	WW	YW	DMI	SC	SCF	MM	MG	MCE	MCW	UDDR	TEAT	CW	FAT	REA	MARB
BII	\$478	6.9	1.2	47	65	-0.1	0.5	22.8	23	46	1.2	60	1.40	1.30	62	0.002	0.58	-0.14
CHB	\$85																	

- A bold sprung, easy doing, thick built daughter of the popular sire All Around.
- She is easy on the eye, pigmented, dark red and short marked. Intentionally held over for fall calving.
- Observed bred 11/20/23 to Angus sire WRA Keen K12. Pasture exposed to WHR 290E D33 Beefmaker 856J from 11/24/23 through 3/1/24. Safe in calf.
- Consigned by NJB Limited, Dale Stith, Mayslick, Ky

25 Cow NJB 671J 9663 JOEY 265 {DBP}

P44497877 BD: 3/16/23 BE: 265

SR EXPEDITION 619G ET (CHB)(DLF,HYF,IEF,MSUDF)
 SR MACE'S EXPEDITION 671J (DLF,HYF,IEF,MSUDF)
 CKP GYPSY 7118

DCR 453Y UNLIMITED 456 (DLF,HYF,IEF,MSUDF)
 DCR 48B DOM 9663 (DLF,HYF,IEF,MSUDF,DBP)
 DCR 312 DOM 6204 (DBP)

NJW LONG HAUL 36E ET (DLF,HYF,IEF,MSUDF,MDF,DFB)
 CHURCHILL LADY 7189E ET (DLF,HYF,IEF,MSUDF,MDF,DFB)
 NJW 33TB 100W TRUST 167Y (SOD)(CHB)(DLF,HYF,IEF,MSUDF,MDF)
 CKP GYPSY 5114 (DOD)
 TH 43P 719T VICTOR 453Y ET (DLF,HYF,IEF)
 DCR 713 BEAUTY 2017 (HYP)
 DCR 713 ICONIC 312
 DCR 136X DOM 3048 (DLF,HYF,IEF,DBP)

BMI	\$341	CE	BW	WW	YW	DMI	SC	SCF	MM	MG	MCE	MCW	UDDR	TEAT	CW	FAT	REA	MARB
BII	\$420	-0.6	3.1	63	108	0.5	1.2	14.4	27	58	-0.6	113	1.30	1.30	83	0.022	0.62	-0.14
CHB	\$135																	

- A heifer that should exhibit extra growth at maturity as she has strong weaning and yearling EPDs. Her dam is a really productive female from Durbin Creek Ranch in Wyoming and has an excellent udder. Her sire carries proven and predictable genetics from breed leaders NJW, Churchill and Stuber Ranch.
- Sells open.
- Consigned by NJB Limited, Dale Stith, Mayslick, Ky

26 Cow DRS 439 EMMA 82K

P44324944 BD: 1/25/22 RE: DRS LE: 82K

THM DURANGO 4037 (SOD)(DLF,HYF,IEF)
 NJW 98S DURANGO 44U (SOD)(DLF,HYF,IEF)
 NJW 9126J DEW DOMINO 98S (DOD)(DLF,HYF,IEF)

TH 70R 11X MR HEREFORD 34Z (DLF,HYF,IEF)
 DKM 11X HEREFORD QUEEN 34Z 439
 DKM MISS DANIKA 48W 1129

CS BOOMER 29F (SOD)(DLF,HYF,IEF)
 THM 7085 VICTRA 9036 (DLF,HYF,IEF)
 CL 1 DOMINO 9126J 1ET (SOD)(DLF,IEF)
 NJW 57G 74G DEW 5M (DLF,HYF,IEF)
 TH 71U 719T MR HEREFORD 11X (SOD)(DLF,HYF,IEF,MDF,DFB)
 TH 172J 57G QUEEN MAKER 70R (DLF,HYF,IEF)
 TH 65R 45P TANK 48W (DLF,HYF,IEF)
 GVHHH J235 H132 M17

BMI	\$331	CE	BW	WW	YW	DMI	SC	SCF	MM	MG	MCE	MCW	UDDR	TEAT	CW	FAT	REA	MARB
BII	\$387	3.1	2.4	59	94	0.4	1.0	17.0	28	57	2.6	63	1.20	1.20	63	0.002	0.32	-0.19
CHB	\$77																	

- Pasture exposed from 10/28/23 through 1/30/24 to BOYD BLUE SKY 0128 (44196494).
- Consigned by DRS Herefords, David Smith, Guston, KY

27 Cow DRS 439 EMMA 05L

P44438498 BD: 3/5/23 RE: DRS LE: 05L

BOYD 31Z BLUEPRINT 6153 (DLF,HYF,IEF,MSUDF,MDF,DFB)
 BOYD BLUE SKY 0128 (DLF,HYF,IEF,MSUDF)
 BOYD 2132 DOMINETTE 5207 ET

TH 70R 11X MR HEREFORD 34Z (DLF,HYF,IEF)
 DKM 11X HEREFORD QUEEN 34Z 439
 DKM MISS DANIKA 48W 1129

R LEADER 6964 (SOD)(DLF,HYF,IEF,MSUDF,DFB)
 NJW 91H 100W RITA 31Z ET (DLF,HYF,IEF)
 KJ HVH 33N REDEEM 485T ET (SOD)(DLF,HYF,IEF,MDF,DFB)
 CL 1 DOMINETTE 2132Z (DLF,HYF,IEF)
 TH 71U 719T MR HEREFORD 11X (SOD)(DLF,HYF,IEF,MDF,DFB)
 TH 172J 57G QUEEN MAKER 70R (DLF,HYF,IEF)
 TH 65R 45P TANK 48W (DLF,HYF,IEF)
 GVHHH J235 H132 M17

BMI	\$389	CE	BW	WW	YW	DMI	SC	SCF	MM	MG	MCE	MCW	UDDR	TEAT	CW	FAT	REA	MARB
BII	\$452	3.9	2.7	58	91	0.2	1.2	20.3	26	55	2.9	80	1.40	1.40	64	0.032	0.34	-0.12
CHB	\$86																	

- A nice dark red moderate framed heifer that is thick middled.
- Sells open.
- Consigned by DRS Herefords, David Smith, Guston, KY

28 PSF RED NECK 419K [HYP,DBP]

P44354391 BD: 3/24/22 BE: P419

Bull

CRR 719 CATAPULT 109 (SOD)(DLF,HYF,IEF,MDF)
 OPH CAT MAN DU 02G (DLF,HYF,IEF,MSUDF,DBP)
 OPH GLAMOUR 08B ET (DBP)

TH 122 711 VICTOR 719T (SOD)(DLF,HYF,IEF,MSUDF,MDF,DBF)
 CRR 4037 ECLIPSE 808 (DLF,HYF,IEF)
 NJW FHF 9710 TANK 45P (SOD)(DLF,HYF,IEF,MDF)
 MSU TCF RACHAEL 22S ET (DBP)

RHF P606 ASSET 1081Y (DLF,HYF,IEF)
 PSF ABBY 214B (DOD)(HYP)
 PSF ABBY VICTORIA 153Y (HYP)

PW VICTOR BOOMER P606 (SOD)(DLF,HYF,IEF,MDF)
 THM 60D JESSIE 6008 (DLF,HYF,IEF)
 GLENVIEW HERD BULL 30S (SOD)
 TSF VICTRA 10011092Y (HYP)

BMI	\$273																	
BII	\$332	CE	BW	WW	YW	DMI	SC	SCF	MM	MG	MCE	MCW	UDDR	TEAT	CW	FAT	REA	MARB
CHB	\$93	-0.7	3.2	52	84	0.1	0.7	12.1	27	53	-2.0	80	1.10	1.10	56	-0.008	0.32	0.01

- Stout, red-necked and dark red bull.
- His dam, PSF ABBY 214B, is an easy keeper with good milk flow and a nicely attached udder.
- A gentle bull with an actual BW of 70 lb.
- Consigned by Pile Stock Farm, Hansel Pile Jr., Cecilia, KY



NJW HISTORIC 81E ET – Service sire of Lot 29

30 PSF CRACKER JACK 422K [HYP,DBP]

P44415761 BD: 9/11/22 BE: P422

Bull

SHF YORK 19H Y02 (SOD)(CHB)(DLF,HYF,IEF)
 CHURCHILL BROADWAY 858F (CHB)(DLF,HYF,IEF,MSUDF,MDF,DBF)
 CHURCHILL LADY 640D (DLF,HYF,IEF)

MSU MF HUDSON 19H (SOD)(DLF,HYF,IEF)
 LOEWEN MISS P20 10W (DLF,HYF,IEF)
 KCF BENNETT ENCORE Z311 ET (SOD)(CHB)(DLF,HYF,IEF,MSUDF,MDF,DBF)
 CHURCHILL LADY 4164B

BOYD LEGACY 3001 (DLF,HYF,IEF,MDF,DBF)
 CHF FARRAH 3001 10F (HYP,DBP)
 CHF REVS LASS 66A (HYP,DBP)

AH JDH CRACKER JACK 26U ET (SOD)(CHB)(DLF,HYF,IEF,MDF)
 MSU APOLLONIA 37X ET (DLF,HYF,IEF,DBP)
 KCF BENNETT REVOLUTION X69 (CHB)(DBP)
 CHF SUNRISE LASS T21 09X (HYP)

BMI	\$387																	
BII	\$480	CE	BW	WW	YW	DMI	SC	SCF	MM	MG	MCE	MCW	UDDR	TEAT	CW	FAT	REA	MARB
CHB	\$153	3.6	2.1	61	100	0.1	1.1	17.0	24	55	6.9	95	1.40	1.40	86	0.092	0.33	0.30

- A moderate framed, dark red, red necked, well-muscled son of the good Broadway 858F bull from Churchill Cattle Company. His dam has a great udder excellent test size, and a good milk supply. His grandam and great grandam sold as a pair and were the fourth to come through the sale ring in the first ever Clifford Farms Sale. Gentle and halter broke to tie.
- Consigned by Smith Family Farm, Ben Smith, Brandenburg, KY and Pile Stock Farm, Cecilia, KY

31 SFF DIAMOND GIRL S315 [DBP]

P44517789 BD: 4/30/23 BE: S315

Cow

NJW 135U 10Y HOMETOWN 27A (DLF,HYF,IEF,MSUDF,MDC)
 PSF HOMEBUILDER 300F (DLF,HYF,IEF,MSUDF,MDF)
 GLENVIEW 7470 YETTA 2220 (HYP)

NJW 73S W18 HOMETOWN 10Y ET (SOD)(CHB)(DLF,HYF,IEF,MSUDF,MDC)
 NJW 4037 34S DURANGO VACA 135U (DOD)(DLF,HYF,IEF,MSUDF)
 GLENVIEW BEYOND 7470 ET (HYP)
 THM VICKY YETTA 4145 (HYP)

GRF T 122L HILANDER 3015ET (DLF,HYF,IEF,DBP)
 T 3015 DIAMOND GIRL T508 (DBP)
 GRASSY RUN DIAMOND 113X ET

REMITALL ONLINE 122L (SOD)(CHB)(DLF,HYF,IEF,DBP)
 GERBER 774 ROSY LANE 623S (DLF,HYF,IEF)
 NJW 8E 120J EMBASSY 81S ET (SOD)(DLF,HYF,IEF)
 ANCHOR 33L

BMI	\$327																	
BII	\$390	CE	BW	WW	YW	DMI	SC	SCF	MM	MG	MCE	MCW	UDDR	TEAT	CW	FAT	REA	MARB
CHB	\$107	1.6	2.6	49	76	-0.1	0.7	15.0	21	45	4.5	84	1.30	1.30	62	0.022	0.36	0.08

- S315 is a square hipped, sound on the move kind of heifer who displays all three dimensions and ties it all together in a moderate framed package. Her dam is one of those cows that breeds on time, and weans a spectacular calf every year. True maternal merit behind this one. Her sire has served in both our herd and the Pile Stock Farm herd.
- Gentle and halter broke to tie. OCV. Sells open.
- Consigned by Smith Family Farm, Ben Smith, Brandenburg, KY



OPH CAT MAN DU 02G – Sire of Lot 28

29 PSF FANCY CAT 417K [DBP]

P44354392 BD: 3/9/22 BE: P417

Cow

CRR 719 CATAPULT 109 (SOD)(DLF,HYF,IEF,MDF)
 OPH CAT MAN DU 02G (DLF,HYF,IEF,MSUDF,DBP)
 OPH GLAMOUR 08B ET (DBP)

TH 122 711 VICTOR 719T (SOD)(DLF,HYF,IEF,MSUDF,MDF,DBF)
 CRR 4037 ECLIPSE 808 (DLF,HYF,IEF)
 NJW FHF 9710 TANK 45P (SOD)(DLF,HYF,IEF,MDF)
 MSU TCF RACHAEL 22S ET (DBP)

RHF P606 ASSET 1081Y (DLF,HYF,IEF)
 PSF FANCY 231B
 JF LIMITED SUPPLY 947 1222

PW VICTOR BOOMER P606 (SOD)(DLF,HYF,IEF,MDF)
 THM 60D JESSIE 6008 (DLF,HYF,IEF)
 NJB 30N LIMITED SUPPLY 947
 MOHICAN FANCY 21T

BMI	\$266																	
BII	\$323	CE	BW	WW	YW	DMI	SC	SCF	MM	MG	MCE	MCW	UDDR	TEAT	CW	FAT	REA	MARB
CHB	\$99	2.7	1.9	48	79	0.0	0.8	11.4	28	52	0.3	76	1.20	1.10	56	0.002	0.31	0.05

- From our MOHICAN FANCY 21T cow family. Her dam has a bull in the Wade Henderson herd and daughters in the herds of Peyton Wells and Pat Fackler.
- AI bred to NJW HISTORIC 81E ET (P43829334), then pasture exposed to GTN ROYAL 2131 (P44245822) from 12/29/23 to 2/15/24.
- Consigned by Pile Stock Farm, Hansel Pile Jr., Cecilia, KY



CHURCHILL BROADWAY 858F – Sire of Lot 30

32 JC MISS BLOOMER 8BL [MDP]

P44475452 BD: 5/16/23 RE: JC LE: 8BL

Cow

EFBEEF BR VALIDATED B413 (SOD)(CHB)(DLF,HYF,IEF,MSUDF,MDF,DBP)
 JC B413 SCOTTY BLOOMQUEST 95YJ (DLF,HYF,IEF,MSUDF,MDF)
 JC 95S 6662 RUBY 95Y (DLF,HYF,IEF,MSUDF,MDF)

EFBEEF TFL U208 TESTED X651 ET (SOD)(CHB)(DLF,HYF,IEF,MSUDF)
 EFBEEF 4R THYRA Y865 (DLF,HYF,IEF,MDF,DBP)
 RV STOCKER 6662 (SOD)(DLF,HYF,IEF)
 JC P606 VICTRESS 95S

SHF WONDER M326 W18 ET (SOD)(CHB)(DLF,HYF,IEF,MDC,DBF)
 JC BW W18 PRECIOUS 8B (MDP)
 JC PRECIOUS P606 8W

KCF BENNETT 3008 M326 (SOD)(CHB)(DLF,HYF,IEF,MDF,DBP)
 SHF GOVERNESS 236G L37 (DLF,HYF,IEF,MDF,DBP)
 PW VICTOR BOOMER P606 (SOD)(DLF,HYF,IEF,MDF)
 JC CATALY BELLE 8G

BMI	\$414																	
BII	\$506	CE	BW	WW	YW	DMI	SC	SCF	MM	MG	MCE	MCW	UDDR	TEAT	CW	FAT	REA	MARB
CHB	\$144	2.8	2.0	55	87	0.3	1.2	19.2	34	61	3.3	85	1.20	1.20	69	0.022	0.60	0.40

- Nice dark red heifer here who was bred by Jim Curry of Norman, Indiana. Her dam is 10 years old and her grandam is 15 years old; both are still going strong. Both dam and grandam are cows with a lot of capacity, rib shape, and optimum milk production.
- Only reason we're letting this heifer go is for some return on investment.
- Gentle and halter broke to tie. OCV. Sells open.
- Consigned by Smith Family Farm, Ben Smith, Brandenburg, KY

33 ZNI RIDER 63K (DLF, HYF, IEF, MSUDF, DBP)

P44444546 BD: 10/4/22 RE: 63K

Bull

KCF BENNETT STRATEGY Z303 ET (CHB)(DLF, HYF, IEF, MSUDF, MDF, DBP)
 TH MASTERPLAN 183F (CHB)(DLF, HYF, IEF, MSUDF, MDF, DBP)
 TH 512X 145Y DOMINETTE 57B (DLF, HYF, IEF)

SCHU-LAR ON TARGET Z2S (SOD)(CHB)(DLF, HYF, IEF, MSUDF, MDF, DBP)
 KCF MISS REVOLUTION X338 ET (DLF, HYF, IEF, DBP)
 FTF PROSPECTOR 145Y (SOD)(DLF, HYF, IEF, MSUDF, MDF)
 TH 122 71I DOMINETTE 512X ET (DLF, HYF, IEF)



BR BELLE AIR 6011 (CHB)(DLF, HYF, IEF, MSUDF, DBP)
 GREEN ZNI DEBUTANTE 9063 ET
 CHURCHILL LADY 6262D ET (DLF, HYF, IEF)

BAR S LHF 028 240 (SOD)(CHB)(DLF, HYF, IEF)
 BR BELLE 4082 ET (DLF, HYF, IEF, MSUDF)
 NJW 78P 88X COWBOSS 199B ET (DLF, HYF, IEF, MDF)
 UCC 6160 KIMBERLY 8001 ET (DLF, HYF, IEF)

BMI	\$316	CE	BW	WW	YW	DMI	SC	SCF	MM	MG	MCE	MCW	UDDR	TEAT	CW	FAT	REA	MARB	
BI	\$414	5.0	3.0	59	104	0.3	1.6	13.1	20	49	3.3	89	1.40	1.40	59	0.032	0.47	0.49	
CHB	\$144																		

- ZNI Rider 63K is just the right kind for any cow man. This bull offers GE EPDs with a wide spread,
- He is in the top percentiles for MARB and CHB? Combines calving ease with growth
- He is a complete made bull that is sound on the move and has eye appeal.
- Consigned by ZNI Cattle, Zach Imbruglio, Leitchfield, KY



TH MASTERPLAN 183F – Sire of Lot 33

34 LF 2426 MS BETTY 903G

P44089637 BD: 9/19/19 LE: 903G

Cow

TH 133U 719T UPGRADE 69X (SOD)(DLF, HYF, IEF)
 MOHICAN THM EXCEDE Z426 (SOD)(DLF, HYF, IEF, MSUDF, MDF, DBP)
 NJW M326 UNFORGETTABLE 76W ET (DLF, HYF, IEF)

TH 122 71I VICTOR 719T (SOD)(DLF, HYF, IEF, MSUDF, MDF, DBP)
 TH 145 103R MEGAN 133U (DLF, HYF, IEF)
 KCF BENNETT 3008 M326 (SOD)(CHB)(DLF, HYF, IEF, MDF, DBP)
 NJW P606 72N DAYDREAM 73S (DLF, HYF, IEF, MSUDF, MDF)

UPS SENSATION 2504 ET (SOD)(DLF, HYF, IEF, MSUDF, MDF)
 MPH 2504 MS SENSATION 16C 14E (DLF, HYF, IEF, MSUDF)
 MPH MS X51 11P 16C

CHURCHILL SENSATION 028X (SOD)(DLF, HYF, IEF, MDF, DBP)
 NJW BW LADYSPORT DEW 78P ET (DLF, HYF, IEF)
 WHITEHAWK X51 BEEFMAKER 396Z (CHB)(DLF, HYF, IEF)
 MPH 102F MS WRANGLER 11P

BMI	\$465	CE	BW	WW	YW	DMI	SC	SCF	MM	MG	MCE	MCW	UDDR	TEAT	CW	FAT	REA	MARB	
BI	\$542	0.5	1.7	60	104	0.2	1.3	24.2	33	63	-0.7	84	1.40	1.40	70	0.012	0.37	0.03	
CHB	\$114																		

- 903G is a high volume Excede daughter in the prime of production. She ranks in the top 10% in 4 traits including the top 5% in Baldy Maternal Index.
- Pasture exposed to our top herd sire THM Coleman 2056 (P44426255) from 7/20/24 to 9/20/2024. Observed bred 7/26/24. Safe in calf with a projected early May calving date. Scurred.
- Consigned by Notchey Creek Farms, Mitch & Kathryn Ingram, Madisonville, TN



Lot 34 – LF 2426 MS BETTY 903G



INNISFAIL WHR X651/723 4013 – Grandsire of Lots 35-36

36 WHR 284D 309E BEEFMAID 156G (DLF, HYF, IEF, MSUDF, DBP)

P44006052 BD: 2/23/19 BE: 156

Cow

INNISFAIL WHR X651/723 4013 ET (CHB)(DLF, HYF, IEF, MSUDF, MDF, DBP)
 WHITEHAWK 4013 ROOSTER 284D (CHB)(DLF, HYF, IEF, MSUDF, DBP)
 WHITEHAWK 0102 BEEFMAID 747B (DLF, HYF, IEF, MSUDF, DBP)

EFBEEF TFL U208 TESTED X651 ET (SOD)(CHB)(DLF, HYF, IEF, MSUDF)
 INNISFAIL P230 T723 (DLF, HYF, IEF, MSUDF)
 HH ADVANCE 0102X ET (DLF, HYF, IEF)
 KCF MISS REVOLUTION Z298 ET (DLF, HYF, IEF, MSUDF, DBP)



KCF BENNETT ADDITION B262 ET (DLF, HYF, IEF, MDF)
 WHR BEEFMAID B262 589C 309E (DLF, HYF, IEF, MSUDF)
 WHR 929X 318 BEEFMAID 859C

KCF BENNETT INFLUENCE Z80 (CHB)(DLF, HYF, IEF, MDF, DBP)
 KCF MISS 3027 Z44 ET (DLF, HYF, IEF, MSUDF)
 WHITEHAWK 10H BEEFMAKER 929X (DLF, HYF, IEF, MDF)
 WALKER LASS X51 W901 318 (DLF, HYF, IEF, MSUDF)

BMI	\$420	CE	BW	WW	YW	DMI	SC	SCF	MM	MG	MCE	MCW	UDDR	TEAT	CW	FAT	REA	MARB	
BI	\$513	-3.6	5.3	67	109	0.2	1.8	18.8	34	68	-1.8	102	1.40	1.40	79	0.032	0.78	0.24	
CHB	\$147																		

- 309E is another quality brood cow from White Hawk Ranch.
- Pasture exposed to an Angus bull, ABA Method 045. Will calve around sale time.
- Consigned by Roberson's Polled Herefords, Jerry Roberson, Portland, TN

35 WHR 311E 380E BEEFMAID 133G (DLF, HYF, IEF, MSUDF, DBP)

P44006239 BD: 2/15/19 BE: 133

Cow

INNISFAIL WHR X651/723 4013 ET (CHB)(DLF, HYF, IEF, MSUDF, MDF)
 WHR BEEFMAKER 4013 191 311E ET (CHB)(DLF, HYF, IEF, MSUDF, MDF, DBP)
 R MISS REVOLUTION 191 (DLF, HYF, IEF, DBP)

EFBEEF TFL U208 TESTED X651 ET (SOD)(CHB)(DLF, HYF, IEF, MSUDF)
 INNISFAIL P230 T723 (DLF, HYF, IEF, MSUDF)
 MSU TCF REVOLUTION 4R (SOD)(DLF, HYF, IEF, MDF, DBP)
 R MISS FELT 2349 (DLF, HYF)



KCF BENNETT ADDITION B262 ET (DLF, HYF, IEF, MDF)
 WHR BEEFMAID B262 891C 380E (DLF, HYF, IEF, MSUDF)
 WHITEHAWK 372Z BEEFMAID 891C (DLF, HYF, IEF)

KCF BENNETT INFLUENCE Z80 (CHB)(DLF, HYF, IEF, MDF, DBP)
 KCF MISS 3027 Z44 ET (DLF, HYF, IEF, MSUDF)
 WHITEHAWK PARAMOUNT 372Z (CHB)(DLF, HYF, IEF, MDF, DBP)
 KCF MISS 9126J T306 (SOD)(DLF, HYF, IEF)

BMI	\$380	CE	BW	WW	YW	DMI	SC	SCF	MM	MG	MCE	MCW	UDDR	TEAT	CW	FAT	REA	MARB	
BI	\$465	4.4	1.5	56	86	0.1	0.7	17.2	23	51	3.8	86	1.30	1.40	70	0.022	0.46	0.30	
CHB	\$137																		

- 133G is a good cow from the Gary Hedrick herd at White Hawk Ranch. She raises a good calf.
- Pasture exposed to an Angus bull, ABA Method 045. Will calve around sale time.
- Consigned by Roberson's Polled Herefords, Jerry Roberson, Portland, TN

37 UNIQUE WILLOW (HYP, DBP)

P44135113 BD: 4/29/20 BE: U09H

Cow

MOHICAN THM EXCEDE Z426 (SOD)(DLF, HYF, IEF, MSUDF, MDF, DBP)
 UNIQUE SICLONE (DLF, HYF, IEF, MSUDF, DBP)
 LH RUTH 608D (HYP, DBP)

TH 133U 719T UPGRADE 69X (SOD)(DLF, HYF, IEF)
 NJW M326 UNFORGETTABLE 76W ET (DLF, HYF, IEF)
 LH LIVEWIRE 301A (DLF, HYF, IEF)
 LH MS PRETTY LADY 210 (HYP, DBP)

ASM 156T Y-AXIS 206Z (DLF, HYF, IEF, DBP)
 UNDERWOOD MISTY U521 (HYP, DBP)
 DW 157H LADY Y3 (HYP)

CMR GVP MR MATERNAL 156T (SOD)(DLF, HYF, IEF, MSUDF, MDF)
 ASM 122L MISS 705ET (DLF, HYF, IEF, DBP)
 DW AA WIDELoad (HYP)
 ANGEL MARIE 157H

BMI	\$417	CE	BW	WW	YW	DMI	SC	SCF	MM	MG	MCE	MCW	UDDR	TEAT	CW	FAT	REA	MARB	
BI	\$487	0.0	3.0	56	84	0.2	1.0	21.0	32	60	-2.6	74	1.40	1.40	72	0.012	0.43	0.02	
CHB	\$108																		

- Dark cherry red cow with the perfect Hereford look and a great udder.
- AI bred 6/7/23 to CMF Gold Rush (44108010) and then again 6/26/23 to Huth Torque (43594696). Will calve before sale. Calving date will determine sire.
- Consigned by One Unique Farm, Ryan Shofner, Campbellsville, KY

38 H 78D ELIZABETH ANN 914 {DLF, HYF, IEF, MSUDF}

P44002116 BD: 3/27/19 RE: H914

Cow

TH 512X 719T PLAYMAKER 14Z (DLF, HYF, IEF, MSUDF)
 TH 108U 14Z PLAYMAKER 78D (DLF, HYF, IEF, MSUDF)
 TH 230R 45P WILDROSE 108U (DLF, HYF, IEF)

TH 122 71I VICTOR 719T (SOD)(DLF, HYF, IEF, MSUDF, MDF, DBF)
 TH 122 71I DOMINETTE 512X ET (DLF, HYF, IEF)
 NJW FHF 9710 TANK 45P (SOD)(DLF, HYF, IEF, MSUDF)
 TH 507E 57G WILDROSE 230R ET



PWF RHF 25L WRANGLER 9001W (SOD)(DLF, HYF, IEF, MSUDF, MDF, DBF)
 H 9001W ELIZABETH ANN 510 (DLF, HYF, IEF)
 H ELIZABETH ANN 524 (HYP)

JDH 15 WRANGLER 25L (SOD)(CHB)(DLF, HYF, IEF)
 PWF MOHICAN BARBIE BOOM P213 (DLF, HYF, IEF)
 G HEADLINER 263 (HYP)
 H MISS PAGE 217

BMI	\$261																	
BII	\$310	CE	BW	WW	YW	DMI	SC	SCF	MM	MG	MCE	MCW	UDDR	TEAT	CW	FAT	REA	MARB
CHB	\$89	-1.2	2.5	43	68	0.0	1.2	11.8	18	39	0.7	79	1.10	1.00	54	-0.048	0.17	-0.01

- A nice freckled faced cow that has been very productive for us. She will make a great addition to any herd.
- AI bred on 12/16/23 to CRR 66589 Balance 107. Pastured exposed from 12/23/23 through 3/30/24 to /S Perfecto 00642.
- Consigned by Crouch Polled Hereford Farm, Russell Crouch, McMinnville, TN



CRR 66589 BALANCE 107 – Service sire for Lots 38-39

38A CROUCH LACEY 00642 H914 347 {DLF, HYF, IEF, MSUDF}

P44519806 BD: 10/11/23 LE: 347

Cow

BG LCC 11B PERFECTO 84F (DLF, HYF, IEF, MSUDF, MDF, DBF)
 /S PERFECTO 00642 (DLF, HYF, IEF, MSUDF)
 /S LADY MANDATE 8428F ET (DLF, HYF, IEF, MSUDF)

LCX PERFECTO 11B ET (DLF, HYF, IEF, MSUDF)
 BG 100W NICKY 31C (DOD)(DLF, HYF, IEF, MSUDF, MDF, DBF)
 /S MANDATE 66589 ET (CHB)(DLF, HYF, IEF, MSUDF, MDF, DBF)
 /S LADY VICTOR 5139C ET (DLF, HYF, IEF, MSUDF)



TH 108U 14Z PLAYMAKER 78D (DLF, HYF, IEF, MSUDF)
 H 78D ELIZABETH ANN 914 (DLF, HYF, IEF, MSUDF)
 H 9010W ELIZABETH ANN 510 (DLF, HYF, IEF)

TH 512X 719T PLAYMAKER 14Z (DLF, HYF, IEF, MSUDF)
 TH 230R 45P WILDROSE 108U (DLF, HYF, IEF)
 PWF RHF 25L WRANGLER 9001W (SOD)(DLF, HYF, IEF, MSUDF, MDF, DBF)
 H ELIZABETH ANN 524 (HYP)

BMI	\$338																	
BII	\$406	CE	BW	WW	YW	DMI	SC	SCF	MM	MG	MCE	MCW	UDDR	TEAT	CW	FAT	REA	MARB
CHB	\$103	7.0	0.9	60	96	0.3	1.3	15.9	31	61	3.1	98	1.30	1.20	74	0.062	0.40	-0.03

- A really awesome heifer calf by our herd sire /S Perfecto 00642. She has the potential to become a good mama cow. Sells open.
- Consigned by Crouch Polled Hereford Farm, Russell Crouch, McMinnville, TN

39A CROUCH LANA 216J 142 343 {DLF, HYF, IEF, MSUDF}

P44521377 BD: 9/15/23 LE: 343

Cow

NJW 133A 6589 MANIFEST 87G ET (DLF, HYF, IEF, MSUDF, MDF, DBF)
 NJW 119E 87G ENDORSEMENT 216J (DLF, HYF, IEF, MSUDF, MDF, DBF)
 NJW 8B 164C LEXY 119E (DLF, HYF, IEF, MSUDF, MDF)

/S MANDATE 66589 ET (CHB)(DLF, HYF, IEF, MSUDF, MDF, DBF)
 BW NJW 76S 8Y HOMESPUN 133A (DLF, HYF, IEF, MSUDF, MDF, DBF)
 NJW 76S 88X CIRCLEBOSS 164C ET (DLF, HYF, IEF, MSUDF)
 NJW 8B 10W LEXY 8B (DOD)(DLF, HYF, IEF, MSUDF, MDF)



BEHM 100W CUDA 504C (SOD)(CHB)(DLF, HYF, IEF, MSUDF, MDF, DBF)
 CROUCH JADA 504C 289G 142 (DLF, HYF, IEF, MSUDF)
 WHR 4013 539E BEEFMAID 289G (DLF, HYF, IEF, MSUDF)

NJW 73S M326 TRUST 100W ET (SOD)(DLF, HYF, IEF, MSUDF, MDF, DBF)
 BEHM R294 JASMAN102Y (DOD)(DLF, HYF, IEF, MSUDF)
 INNISFAIL WHR X651/723 4013 ET (CHB)(DLF, HYF, IEF, MSUDF, MDF)
 WHR 845C 721B BEEFMAID 539E (DLF, HYF, IEF)

BMI	\$437																	
BII	\$525	CE	BW	WW	YW	DMI	SC	SCF	MM	MG	MCE	MCW	UDDR	TEAT	CW	FAT	REA	MARB
CHB	\$116	8.9	-0.1	65	101	0.7	1.4	22.4	30	63	-0.2	85	1.50	1.40	75	0.042	0.55	0.15

- Nice heifer calf that has lots of potential to become a great cow. Sells open.
- Consigned by Crouch Polled Hereford Farm, Russell Crouch, McMinnville, TN

39 CROUCH JADA 504C 289G 142 {DLF, HYF, IEF, MSUDF}

P44323450 BD: 9/19/21 LE: 142

Cow

NJW 73S M326 TRUST 100W ET (SOD)(CHB)(DLF, HYF, IEF, MSUDF, MDF, DBF)
 BEHM 100W CUDA 504C (SOD)(CHB)(DLF, HYF, IEF, MSUDF, MDF, DBF)
 BEHM R294 JASMAN102Y (DOD)(DLF, HYF, IEF, MSUDF)

KCF BENNETT 3008 M326 (SOD)(CHB)(DLF, HYF, IEF, MSUDF, MDF, DBF)
 NJW P606 72N DAYDREAM 73S (DLF, HYF, IEF, MSUDF, MDF, DBF)
 KCF BENNETT 9126J R294 (SOD)(DLF, IEF)
 CPH MS WRANGLER 1W (DOD)



INNISFAIL WHR X651/723 4013 ET (CHB)(DLF, HYF, IEF, MSUDF, MDF)
 WHR 4013 539E BEEFMAID 289G (DLF, HYF, IEF, MSUDF)
 WHR 845C 721B BEEFMAID 539E (DLF, HYF, IEF)

EFBEEF TFL U208 TESTED X651 ET (SOD)(CHB)(DLF, HYF, IEF, MSUDF)
 INNISFAIL P230 T723 (DLF, HYF, IEF, MSUDF)
 WHITEHAWK WARRIOR 845C ET (SOD)(CHB)(DLF, HYF, IEF, MSUDF, MDF)
 WHITEHAWK 1016 BEEFMAID 721B (DLF, HYF, IEF)

BMI	\$419																	
BII	\$530	CE	BW	WW	YW	DMI	SC	SCF	MM	MG	MCE	MCW	UDDR	TEAT	CW	FAT	REA	MARB
CHB	\$154	4.9	1.1	71	105	0.6	1.4	19.3	32	67	-2.5	84	1.40	1.40	80	0.032	0.49	0.44

- A great young cow with a great future. A cow that will make an awesome addition to any cattleman's herd.
- AI bred on 12/16/23 to CRR 66589 Balance 107. Pastured exposed from 12/23/23 through 3/30/24 to /S Perfecto 00642.
- Consigned by Crouch Polled Hereford Farm, Russell Crouch, McMinnville, TN



BEHM 100W CUDA 504C – Sire of Lot 39

40 MIN SALLY GOV ZC39 {HYP}

P44130159 BD: 10/3/18 RE: ZC39

Cow

T BOYS DRAGON (DLF, HYF, IEF)
 ZC KY GOVERNOR 109W (DLF, HYF, IEF, MSUDF)
 TLH GOVERNNESS 909 (HYP)

DSF BOOMER T3 (HYP)
 WCF VICKI GAY 1 (DLP, HYP)
 BOTKINS BOOMER P606-5013 (HYP)
 BECKLEY 0058 GOVERNNESS 869R (HYP)



LDH SAM-J R (HYP)
 ZC SALLY (HYP)
 M&M EMILY 877 (HYP)

WTKS SAM G S110 (HYP)
 LDH PEBBLES-29-S4
 M&M 434V TRADITION P464 (HYP)
 M&M P606 VICTORIA 604

BMI	\$314																	
BII	\$367	CE	BW	WW	YW	DMI	SC	SCF	MM	MG	MCE	MCW	UDDR	TEAT	CW	FAT	REA	MARB
CHB	\$95	-0.9	3.4	43	68	-0.2	0.5	14.8	25	46	0.5	70	1.10	1.10	55	0.002	0.28	0.02

- Dark red, lengthy, large-framed cow with an excellent udder.
- Will have a black baldy calf at side.
- Sells open.
- Consigned by S&C Farms, Steve Alvey, Leitchfield, KY

41 LDH WINNIE GOV ZC42

P44130155 BD: 11/25/17 RE: ZC42

Cow

T BOYS DRAGON (DLF, HYF, IEF)
 ZC KY GOVERNOR 109W (DLF, HYF, IEF, MSUDF)
 TLH GOVERNNESS 909 (HYP)

DSF BOOMER T3 (HYP)
 WCF VICKI GAY 1 (DLP, HYP)
 BOTKINS BOOMER P606-5013 (HYP)
 BECKLEY 0058 GOVERNNESS 869R (HYP)



T BOYS DRAGON (DLF, HYF, IEF)
 LDH BIG WINNIE
 LDH LAPRINCE

DSF BOOMER T3 (HYP)
 WCF VICKI GAY 1 (DLP, HYP)
 DRF JWR PRINCE VICTOR 711 (SOD)(DLF, HYF, IEF, MSUDF)
 LDH LACY

BMI	\$339																	
BII	\$392	CE	BW	WW	YW	DMI	SC	SCF	MM	MG	MCE	MCW	UDDR	TEAT	CW	FAT	REA	MARB
CHB	\$92	-0.2	3.1	42	69	-0.3	0.6	16.7	23	44	1.3	81	1.10	1.20	52	0.002	0.17	0.01

- Dark red, lengthy, large-framed cow with an excellent udder.
- Will have a black baldy calf at side.
- Sells open.
- Consigned by S&C Farms, Steve Alvey, Leitchfield, KY

42 STEVES H7 GOV ZC44 [HYP]

P44130158 BD: 10/14/18 RE: ZC44

Cow

BOYS DRAGON (DLF,HYF,IEF)
ZC KY GOVERNOR 109W (DLF,HYF,IEF,MSUDF)
TLH GOVERNESS 909 (HYP)

DSF BOOMER T3 (HYP)
WCF VICKI GAY 1 (DLP,HYP)
BOTKINS BOOMER P606-5013 (HYP)
BECKLEY 0058 GOVERNESS 869R (HYP)

DSF BOOMER T3 (HYP)
ZC STEVE'S H7 R1 (HYP)
PSF KIM PREMIUM 99R (HYP)

DSF HUMPHREY 11N ET (HYP)
JJD MISS MORGAN 933 (HYP)
PSF PREMIUM 30H
PSF KIM BONANZA 36L (HYP)

BMI	\$330																	
BII	\$385	CE	BW	WW	YW	DMI	SC	SCF	MM	MG	MCE	MCW	UDDR	TEAT	CW	FAT	REA	MARB
CHB	\$101	3.9	2.3	42	68	-0.2	0.5	15.7	21	42	2.2	79	1.10	1.10	58	0.002	0.31	0.05

- Medium red, deep-bodied, large-framed cow with a good udder.
- Will have a black baldy calf at side.
- Sells open.
- Consigned by S&C Farms, Steve Alvey, Leitchfield, KY



DRF JWR PRINCE VICTOR 71L – Grandsire of Lots 43 and 44

45 RED GOV S75 [HYP]

P44539359 BD: 9/25/23 RE: S75

Cow

DRF JWR PRINCE VICTOR 71L (SOD)(DLF,HYF,IEF,MSUDF)
LDH PATRICK (DLF,HYF,IEF,MSUDF)
LDH LACY

HRP THM VICTOR 109W 9329 (SOD)
RHF 964 VICTRA 4057
DR WORLD CLASS 517 10H (SOD)(DLF,HYF,IEF)
LDH SISCHIVER

ZC KY GOVERNOR 109W (DLF,HYF,IEF,MSUDF)
RED EYES 22 GOV ZC40 (HYP)
ZC ALVEYS RED EYES 22 (HYP)

T BOYS DRAGON (DLF,HYF,IEF)
TLH GOVERNESS 909 (HYP)
LDH SAM-J R (HYP)
CH RED EYES 914

BMI	\$341																	
BII	\$397	CE	BW	WW	YW	DMI	SC	SCF	MM	MG	MCE	MCW	UDDR	TEAT	CW	FAT	REA	MARB
CHB	\$92	1.8	2.9	45	72	-0.2	0.8	16.9	25	48	4.4	86	1.20	1.10	55	-0.008	0.14	0.00

- Dark red, lengthy, large-framed heifer that is a grand daughter of PRINCE VICTOR 71L.
- Sells open.
- Consigned by S&C Farms, Steve Alvey, Leitchfield, KY

43 LDH PATTY GOV S73

P44535470 BD: 4/12/23 RE: S73

Cow

DRF JWR PRINCE VICTOR 71L (SOD)(DLF,HYF,IEF,MSUDF)
LDH PATRICK (DLF,HYF,IEF,MSUDF)
LDH LACY

HRP THM VICTOR 109W 9329 (SOD)
RHF 964 VICTRA 4057
DR WORLD CLASS 517 10H (SOD)(DLF,HYF,IEF)
LDH SISCHIVER

ZC KY GOVERNOR 109W (DLF,HYF,IEF,MSUDF)
LDH WINNIE GOV ZC42
LDH BIG WINNIE

T BOYS DRAGON (DLF,HYF,IEF)
TLH GOVERNESS 909 (HYP)
T BOYS DRAGON (DLF,HYF,IEF)
LDH LAPRINCE

BMI	\$357																	
BII	\$413	CE	BW	WW	YW	DMI	SC	SCF	MM	MG	MCE	MCW	UDDR	TEAT	CW	FAT	REA	MARB
CHB	\$88	3.2	2.4	45	72	-0.2	0.8	18.2	24	47	4.9	90	1.10	1.10	52	-0.008	0.11	-0.01

- Dark red, lengthy, large-framed heifer that is a grand daughter of DRF JWR PRINCE VICTOR 71L.
- Sells open.
- Consigned by S&C Farms, Steve Alvey, Leitchfield, KY

44 LDH PATTY S74

P44535452 BD: 4/2/23 RE: S74

Cow

DRF JWR PRINCE VICTOR 71L (SOD)(DLF,HYF,IEF,MSUDF)
LDH PATRICK (DLF,HYF,IEF,MSUDF)
LDH LACY

HRP THM VICTOR 109W 9329 (SOD)
RHF 964 VICTRA 4057
DR WORLD CLASS 517 10H (SOD)(DLF,HYF,IEF)
LDH SISCHIVER

T BOYS DRAGON (DLF,HYF,IEF)
LDH BIG WINNIE
LDH LAPRINCE

DSF BOOMER T3 (HYP)
WCF VICKI GAY 1 (DLP,HYP)
DRF JWR PRINCE VICTOR 71L (SOD)(DLF,HYF,IEF,MSUDF)
LDH LACY

BMI	\$354																	
BII	\$410	CE	BW	WW	YW	DMI	SC	SCF	MM	MG	MCE	MCW	UDDR	TEAT	CW	FAT	REA	MARB
CHB	\$86	2.4	2.6	46	74	-0.2	0.9	18.1	25	48	4.8	93	1.10	1.10	51	-0.008	0.07	-0.02

- Dark red, lengthy, large-framed heifer that is a grand daughter of DRF JWR PRINCE VICTOR 71L.
- Sells open.
- Consigned by S&C Farms, Steve Alvey, Leitchfield, KY



Commercial Lots

46 Commercial Hereford Open Heifer

- Calved Jan 28, 2023, sired by BOYD BLUE SKY 0128, OCV
- Consigned by DRS Herefords, David Smith, Guston, KY

50 3 Year-Old Commercial Hereford Cow

- Sells with heifer calf at side calved on 11/15/23 by K3 15E 316 Mud Hole 041. Pasture exposed from Dec 15-Feb 1, 2024 to K3 15E 316 Mud Hole 041 (P44285807).
- Consigned by Gene Steiner Management Co., Inc., Gene Steiner, Lebanon, OH

52-53 Two F-1 Black Baldy Open Heifers

- 52-Reg. Hereford Cow X Angus bull BCF 3499 Renown D182. Calved 2/21/2023.
- 53 - Hereford Bull NJW 137X 10Y HOMETOWN 69D ET X commercial Angus cow. Calved 2/26/2023.
- Consigned by Notchey Creek Farms & Bar-W Cattle Co., Madisonville, TN

57-58 Commercial Hereford Cows with Black Baldy Calves

- 57-Tag 2116, has a BWF heifer calved 1/12/24 at side. Sells open.
- 58-Tag 2130, has a BWF heifer calf born 1/15/24 at side. Sells open.

47-49 Three Black Commercial Cows with Black Baldy Calves

- Three black, five-year-old cows with spring calves. Sell open.
- Consigned by Walker Herefords, Eric Walker, Morrison, TN

51 5 year-old Commercial Angus Cow.

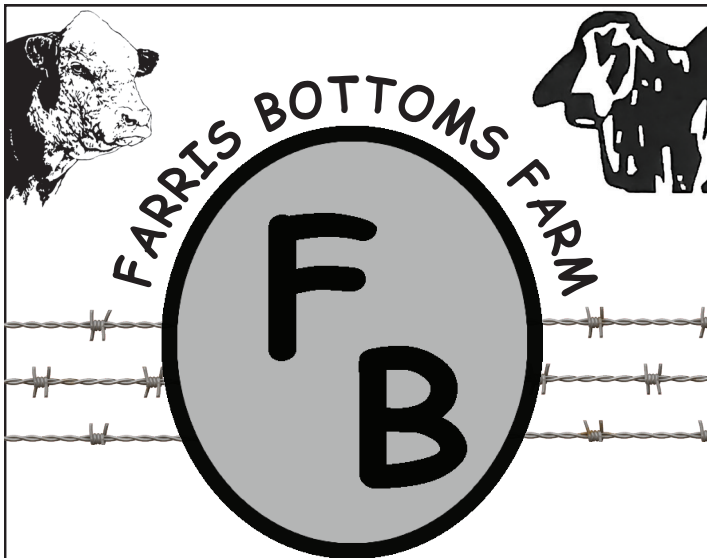
- Sells with bull calf at side, calved on 10/2/23 by K3 15E 316 Mud Hole 041. Pasture exposed from Dec 15-Feb 1, 2024 to K3 15E 316 Mud Hole 041 (P44285807).
- Consigned by Gene Steiner Management Co., Inc., Gene Steiner, Lebanon, OH

54-56 Three Red Baldy Open Heifers

- Granddaughters of Boyd Masterpiece 0220. Developed on stockpiled fescue and grass hay postweaning
- 54 -Tattoo S305, DOB: 3/28/23, BW: 64 lbs., ;55-Tattoo: 5307, DOB: 4/5/23, BW: 70 lbs.,;56- Tattoo: 5310, DOB: 4/9/23, BW: 67 lbs.All have been OCV
- Consigned by Smith Family Farm, Ben Smith, Brandenburg, KY

59-60 Two F-1 Black Baldy Bred Heifers

- Pasture exposed to calving ease Angus bull (AAA 20403816).from 11/10/23 to 2/20/24
- Consigned by Willow Brook Hereford Farm, Robert Brooks, Greenback, TN



HEREFORD - BRAHMAN - F1 CROSSES

*Herefords that excel in docility, calving ease and growth. Producing Hereford/Brahman F1 Golden Certified Hybrids with top quality Braford as the goal.
Cattle For Sale Private Treaty*

Ronny & Gail Phillips
Hartsville, TN
615-655-5629

Caleb & Joanna Wix
Westmoreland, TN
615-655-3155



Underwood Farms

**Doug, Darrelyn, Megan,
& Ryan Underwood**

Doug (270) 789-7788 • Ryan (270) 789-7891
Campbellsville, Kentucky

- At Smith Family Farm we focus on the female and breed the kind you want to make a cow out of.
- Our approach to breeding maternally oriented cattle is built around selecting for traits such as fleshing ability, moderate frame size, optimal milk production, structural soundness, fertility, and longevity
- We raise and develop our cattle in a low-input system developed around forage with minimal supplementation
- Registered females and bulls for sale as well as Hereford influenced commercial cattle
- Look for our cattle in the Middle Tennessee Hereford Association Spring and Fall Sales, the Kentucky Hereford Association Fall Sale, the Kentucky Beef Expo, or call us for private treaty deals!

smithfamilyfarmky.com

SMITH FAMILY FARM
REGISTERED HEREFORD CATTLE
COMMERCIAL ANGUS
270-547-8484



MIDDLE TENNESSEE HEREFORD ASSOCIATION SCHOLARSHIP

DIRECTIONS

Please fill out the application below. You may use your own paper to complete the essay questions. Essay must be one page minimum. Please include transcript from school counselor and an up to date resume. **MUST BE TURNED IN BY APRIL 1st FOR ELIGIBILITY!!!**

- Applicant must be Hereford affiliated.
- There will be two \$500 scholarships awarded: 1 to a female and 1 to a male student
- Scholarship will be awarded at the MTHA annual meeting.
- You will be asked to be at the event to be awarded the scholarship but not mandatory.

BASIC INFORMATION

Name: _____

Gender: _____ Female _____ Male

Where do you live: _____ City _____ Rural (non-farm) _____ Rural farm _____ Other

Years in agricultural education: _____

Colleges or vocational/trade schools you are interested in attending: _____

Fields of studies you wish to fulfill while in college or vocational school: _____

What are your hobbies in your spare time: _____

FFA, 4-H, or HEREFORD ACTIVITIES _____

Years in activities: _____

Awards received: _____

Offices held : _____

List events and activities you have participated in: _____

EXTRACURRICULAR ACTIVITIES

Do you have extracurricular activities either at school or outside of school: _____

ESSAY

Please answer the following questions in your one page essay. More than one page will not be held against you.

- How would you say the FFA, 4-H, Hereford activities has helped you in leadership, career path, and agricultural education?
- How do you plan to pay for college or vocational school?
- If you are to be awarded the scholarship how would you use the money towards your education?

You may apply for this scholarship by completing this application. Once completed, please mail or email to the following contact information: staneast3@gmail.com or Stan East, 241 Old Lebanon Road, Carthage TN 37030.

Consignors**Bulls****Females**

Consignors	Bulls	Females
Clifford Farms, Lincoln Clifford (859) 954-0102		1-4
Jackson Farms, Billy Jackson (615) 478-4483		5-6
Gene Steiner Management Co., Inc., Gene Steiner (513) 616-4086		7-9, 50-51
Underwood Farms, Doug Underwood (Ryan) (270) 789-7891	12	10-11,13
Chute Farm Polled Herefords, Randy (270) 792-4547, James (270) 792-0452, and Rachel (270) 792-4550		14
Webster Polled Herefords, Stan Webster (615)-683-7869		15
East Polled Herefords, Stan East (615) 588-7522		16
Crawford Farm, Darrell and Anne Crawford (270) 847-3249		17
Farris Bottom Farms, Caleb Wix (615) 655-3155, Ronny& Gail Phillips (615) 655-5629		18-19
K3 Cattle, Kyle Bush (859) 588-4531	20-22	23
NJB Limited, Dale Stith (918) 760-1550		24-25
DRS Herefords, David Smith (859) 421-8535		26-27, 46
Pile Stock Farm, Hansel Pile Jr. (270) 735-5192	28,30	29
Smith Family Farm, Ben Smith (270) 547-8484	30	31-32, 54-56
ZNI Cattle, Zach Imbruglio (270) 993-0534	33	
Notchey Creek Farms, Mitch & Kathryn Ingram (423) 337-1074 (M), (423) 337-1383 (K)		34. 52
Roberson's Polled Herefords, Jerry Roberson (615) 325-1683		35-36
One Unique Farm, Ryan Shofner (270) 789-8528		37
Crouch Polled Hereford Farm, Russell Crouch (931) 273-5819		38-39
S&C Farms, Steve Alvey (502) 991-2976		40-45
Walker Herefords, Eric Walker (931) 607-6356		47-49
Bar-W Cattle Co., Brandon West (423) 572-2582		53
Anderson Farms, Chris Anderson (931) 212-5257		57-58
Willow Brook Farm, Robert Brooks (423) 307-9149		59-60

KSI Marketing & Design
Kathryn Ingram
3149 Old Highway 68
Madisonville, TN 37354

MIDDLE TENNESSEE HEREFORD ASSOCIATION

2024 Spring Sale



April 27, 2024 • 11:30 a.m. CT
Kentucky-Tennessee Livestock Market
8639 TN Hwy 25, Cross Plains, Tennessee