



BRADSHAW RANCH

Bull Sale

March 27, 2024

Keosauqua Sales Co. Inc. ♦ 20555 Hwy. 1 ♦ Keosauqua, IA 52565
5:30 p.m. (CST)





BRADSHAW RANCH

Welcome Cattlemen!

We want to invite you to the inaugural Bradshaw Ranch Bull Sale! We appreciate your consideration in our program and interest in this quality offering.

With a deep passion for this industry and coming from generational cattlemen we are striving to carry on the tradition of raising good cattle for many years to come. Acquiring our cow herd from Hoffman Ranch gave us the right foundation to build upon and further develop the type of cattle who will make lasting impressions in any operation. We are excited to have put together this first offering of elite bulls who represent the kind of cattle we want to raise.

Throughout the catalog you will see prominent Hereford genetics that go back to some very influential programs. We hope this enhances confidence in your decision making to know these bulls not only come with proven pedigrees, but also read with desirable phenotypic traits. Their soundness of structure, balance and genuine power will add value and longevity to your purebred operation.

We also see the usefulness in these high quality, functional bulls as herd sires who deserve a spot in the commercial cattleman's operation. With a positive future ahead in the cattle market we firmly believe this is the time to invest in bulls of this caliber to further improve the commercial cow-calf herd. In our opinion there is not a more efficient, hardier cross than the F1 Baldy. The added heterosis and performance will add pounds and profit to calves while increasing fertility and longevity in replacement females.

This offering of two-year-old bulls has been developed on a high roughage-based diet. They have been semen tested and are ready to go to work in your herd.

Once again, we are glad you are here and appreciate your support; our family looks forward to working with you. The bulls are available for viewing any time here on the ranch in Labelle, Missouri, or on the day of the sale in Keosauqua, Iowa. If we can be of any assistance, please don't hesitate to reach out.

*God Bless,
Riley and Hannah*



BRADSHAW RANCH *Bull Sale*

March 27, 2024

Keosauqua Sales Co. Inc. ♦ 20555 Hwy. 1 ♦ Keosauqua, IA 52565

Cattle available for viewing - Noon March 27, 2024
Sale Barn Café will be open for a complimentary meal.
Sale will start at 5:30 p.m. (CST)

Contact: Riley Bradshaw 217-491-6096

Sale Location: Keosauqua Sales Co. Inc., 20555 Hwy. 1, Keosauqua, IA 52565

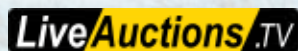
Auctioneer: Cody Lowderman 309-313-2171

AHA Rep: Joe Rickabaugh 785-633-3188

Photography: Mikayln White 309-251-7260

Sale Vet: Canton Vet Service, Dr. David Hudson

ABSENTEE BIDDING: If you would like to place a bid but are unable to attend the sale, please contact Riley to do so. You may also bid online with LiveAuctions.TV.



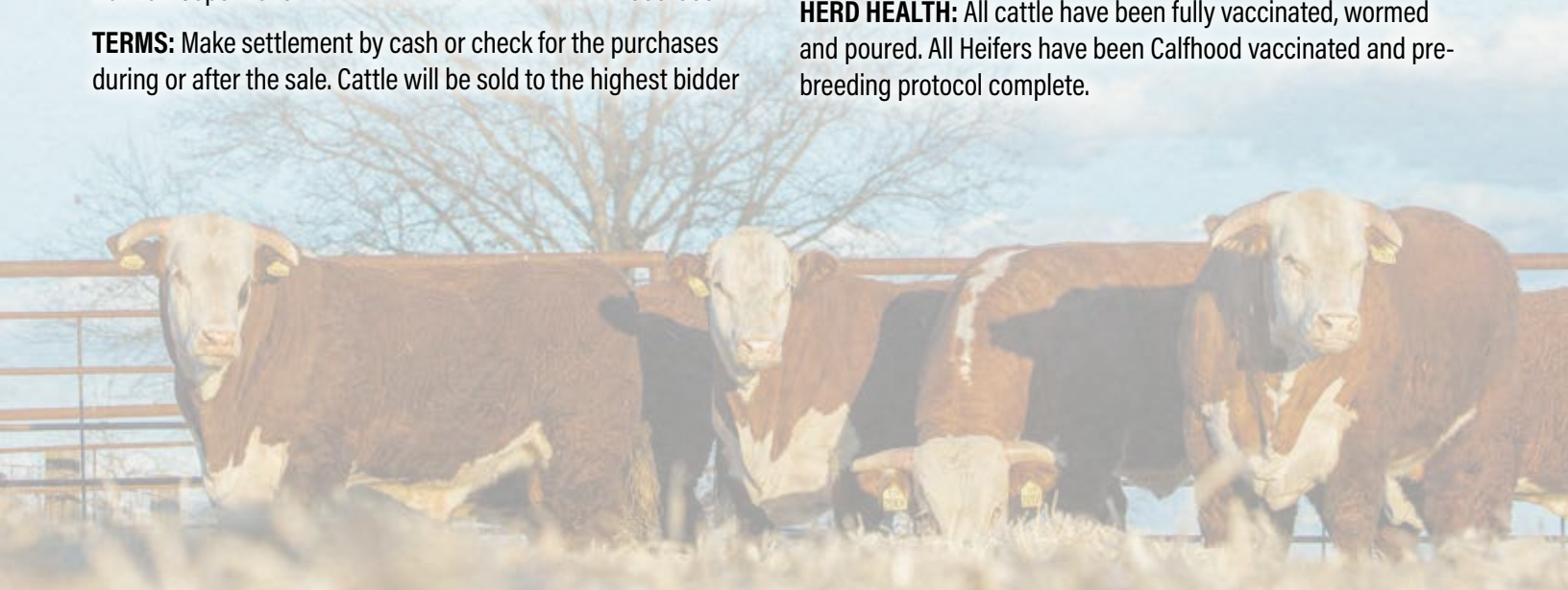
Hannah Copenhaver 660-909-7472

TERMS: Make settlement by cash or check for the purchases during or after the sale. Cattle will be sold to the highest bidder

with all disputes settled by the auctioneer. All sales are final and cattle are the buyers responsibility as soon as they are sold. Let Riley Bradshaw know any arrangements for pick-up and trucking when you make settlement.

GUARANTEE: All bulls have been semen tested and examined to be sound and guaranteed breeders. If an animal fails to breed and is reported to the seller by September 1, 2024, it can be returned to seller if in acceptable condition. If the bull is confirmed to be a non-breeder, a replacement bull of the same value or credit will be offered.

HERD HEALTH: All cattle have been fully vaccinated, wormed and poured. All Heifers have been Calhood vaccinated and pre-breeding protocol complete.



Reference Sires



H BELL RINGER 8459 ET

A | H BELL RINGER 8459 ET {DLF,HYF,IEF,MDF,DBF}

BAR SLHF 028 240 (CHB) (DLF,HYF,IEF)
BR BELLE AIR 6011 (CHB) (DLF,HYF,IEF,MSUDF,DBF)
 43724674 BR BELLE 4082 ET (DLF,HYF,IEF,MSUDF)



CRR 719 TULO 928 (SOD) (DLF,HYF,IEF)
BRL ENVY 401A (DLF,HYF,IEF,MSUDF)
 P43375593 BRL CATE W4100 (HYP)

CHURCHILL SENSATION 028X (SOD) (DLF,HYF,IEF,MDF,DBF)
 CHURCHILL LADY 078X (DLF,HYF,IEF)
 GOLDEN OAK OUTCROSS 18U (SOD) (DLF,HYF,IEF,MSUDF)
 BR CSF BRIELLE 8052 ET (DLF,HYF,IEF)
 TH 122711 VICTOR 719T (SOD) (DLF,HYF,IEF,MSUDF,MDF)
 CRR 352 ECLIPSE 544 (DLF,HYF,IEF)
 R&R PRIME CUT 6378 ET (CHB) (DLF,HYF,IEF,MSUDF)
 BRL FLAME 410T (HYP)

| CE | BW | WW | YW | DMI | SC | SCF | MM | M&G | MCE |
|------|------|------|-----|-------|------|------|-------|------|------|
| -0.7 | 3.4 | 71 | 118 | 0.7 | 1.6 | 16.7 | 25 | 61 | 1.0 |
| MCW | UDDR | TEAT | CW | FAT | REA | MARB | BMI\$ | BIIS | CHBS |
| 115 | 1.30 | 1.10 | 90 | 0.081 | 0.47 | 0.44 | 389 | 500 | 164 |

B | K&B TYCOON 960G ET {DLF,HYF,IEF,MSUDF,MDF}

HH ADVANCE 4075B ET (DLF,HYF,IEF,MSUDF,MDF)
HFHF ADVANCE 628 ET (CHB) (DLF,HYF,IEF,MSUDF,MDF,DBF)
 43720817 FHF 408 RITA 21W (DLF,HYF,IEF,MSUDF)



K&B BANDIDO 8227U ET (CHB) (DLF,HYF,IEF)
K&B BELLA 21921ET (DOD) (DLF,HYF,IEF,MSUDF,MDF,DBF)
 43326843 K&B SWEET SALLY 5037 (DLF,HYF,IEF)

HH ADVANCE 1013Y ET (SOD) (DLF,HYF,IEF)
 HH MISS ADVANCE 0121X (DLF,HYF,IEF)
 CJH HARLAND 408 (SOD) (DLF,HYF,IEF,MSUDF,MDF)
 FHF 45P RITA 101T (HYP)
 KCF BENNETT 3008 M326 (SOD) (CHB) (DLF,HYF,IEF,MDF,DBF)
 K&B MISS EXCEL 4216 (DLF,HYF,IEF)
 PW VICTOR BOOMER P606 (SOD) (DLF,HYF,IEF,MDF)
 K&B LYNN DOM 3035 (IEP)

| CE | BW | WW | YW | DMI | SC | SCF | MM | M&G | MCE |
|-----|------|------|----|--------|------|-------|-------|------|------|
| 0.2 | 3.8 | 62 | 87 | 0.2 | 0.7 | 14.5 | 23 | 54 | -5.1 |
| MCW | UDDR | TEAT | CW | FAT | REA | MARB | BMI\$ | BIIS | CHBS |
| 91 | 1.40 | 1.60 | 79 | -0.019 | 1.00 | -0.07 | 339 | 400 | 114 |



K&B TYCOON 960G ET

C | LCX PERFECTO 11B ET {DLF,HYF,IEF,MSUDF}

SHF RIB EYE M326 R117 (SOD) (CHB) (DLF,HYF,IEF)
NJW 98S R117 RIBEYE 88X ET (SOD) (DLF,HYF,IEF,MSUDF,MDF,DBF)
 43094146 NJW 9126J DEW DOMINO 98S (DOD) (DLF,HYF,IEF)



TH 122711 VICTOR 719T (SOD) (DLF,HYF,IEF,MSUDF,MDF)
WLL ZOXY 3Z (DLF,HYF,IEF)
 P43333321 WLL VENUS 19X (HYP)

KCF BENNETT 3008 M326 (SOD) (CHB) (DLF,HYF,IEF,MDF,DBF)
 HVH MISS HUDSON 83K 8M (HYP)
 CL 1 DOMINO 9126J 1ET (SOD) (DLF,IEF)
 NJW 576 746 DEW 5M (DLF,HYF,IEF)
 DRF JWR PRINCE VICTOR 711 (SOD) (DLF,HYF,IEF,MSUDF)
 KBCR 19D DOMINETTE 122 (DLF,HYP,IEF)
 ELM-LODGE NEXT BIG THING 3N (HYP)
 KIRBY-LONEPINE SYBIL ET 544U (HYP)

| CE | BW | WW | YW | DMI | SC | SCF | MM | M&G | MCE |
|-----|------|------|----|--------|------|------|-------|------|------|
| 5.3 | 1.6 | 68 | 96 | 0.5 | 0.4 | 24.6 | 38 | 72 | 5.4 |
| MCW | UDDR | TEAT | CW | FAT | REA | MARB | BMI\$ | BIIS | CHBS |
| 86 | 1.20 | 1.20 | 68 | -0.049 | 0.67 | 0.02 | 472 | 553 | 104 |



LCX PERFECTO 11B ET

Reference Sires

D | SR DOMINATE 308F ET {CHB}{DLF,HYF,IEF,MSUDF,MDF}

43954712 | Calved: 3/15/18 | Tattoo: BE 308

CL 1 DOMINO 215Z (SOD){CHB}{DLF,HYF,IEF,MSUDF,MDF}
BCC DOMINATOR 619D (CHB){DLF,HYF,IEF,MDF}
 43732924 BCC MISS BELL 206Z (DLF,HYF,IEF,MSUDF)



GOLDEN OAK OUTCROSS 18U (SOD){DLF,HYF,IEF,MSUDF}
CHURCHILL LADY 1162Y ET (DLF,HYF,IEF,MSUDF,MDF)
 43184480 DCC 8006 PATTI 4266 ET (DLF,HYF,IEF)

CL 1 DOMINO 9122W 1ET (CHB){DLF,HYF,IEF}
 CL 1 DOMINETTE 055X (DOD){DLF,HYF,IEF}
 BCC LI HOGAN 710 (DLF,HYF,IEF)
 BCC LACEY 048X (DLF,HYF,IEF,MSUDF)
 GOLDEN-OAK FUSION 3S (SOD){DLF,HYF,IEF,MSUDC}
 GOLDEN-OAK 600 MALLORY 15M (HYF)
 H 8E EMBRACER 8006 (CHB){HYF}
 OXH PATTI 2175

| CE | BW | WW | YW | DMI | SC | SCF | MM | M&G | MCE |
|------|------|------|-----|-------|------|------|-------|------|------|
| -3.8 | 5.1 | 67 | 115 | 0.7 | 1.1 | 10.7 | 31 | 65 | 4.7 |
| MCW | UDDR | TEAT | CW | FAT | REA | MARB | BMI\$ | BIIS | CHBS |
| 120 | 1.20 | 1.10 | 93 | 0.011 | 0.84 | 0.00 | 293 | 363 | 135 |



SR DOMINATE 308F ET

E | CL 1 DOMINO 7131E 1ET {CHB}{DLF,HYF,IEF,MSUDF}

43810450 | Calved: 1/16/17 | Tattoo: LE 7131

CL 1 DOMINO 215Z (SOD){CHB}{DLF,HYF,IEF,MSUDF,MDF}
HH ADVANCE 5044C ET (DLF,HYF,IEF,MSUDF)
 43578992 HH MISS ADVANCE 1072Y ET (DLF,HYF,IEF)



CL 1 DOMINO 1161Y (DLF,HYF,IEF)
CL 1 DOMINETTE 3175A (DLF,HYF,IEF)
 43739690 CL 1 DOMINETTE 1123Y 1ET (DLF,HYF,IEF)

CL 1 DOMINO 9122W 1ET (CHB){DLF,HYF,IEF}
 CL 1 DOMINETTE 055X (DOD){DLF,HYF,IEF}
 HH ADVANCE 4059P (DLF,IEF)
 HH MISS ADVANCE 7003T (DOD){DLF,HYF,IEF}
 CL 1 DOMINO 732T (SOD){DLF,IEF}
 CL 1 DOMINETTE 4126P (DLF,HYF,IEF)
 CL 1 DOMINO 955W (SOD){DLF,HYF,IEF}
 CL 1 DOMINETTE 615S (DLF,HYF,IEF)

| CE | BW | WW | YW | DMI | SC | SCF | MM | M&G | MCE |
|------|------|------|-----|-------|------|------|-------|------|------|
| -0.5 | 4.5 | 72 | 122 | 0.2 | 1.5 | 15.7 | 30 | 66 | 3.9 |
| MCW | UDDR | TEAT | CW | FAT | REA | MARB | BMI\$ | BIIS | CHBS |
| 138 | 1.30 | 1.40 | 86 | 0.031 | 0.50 | 0.01 | 368 | 450 | 136 |



CL 1 DOMINO 7131E 1ET

F | H DEBERARD 7454 ET {DLF,HYF,IEF,MSUDF,MDF,DBF}

P43799239 | Calved: 3/14/17 | Tattoo: BE 7454

CHURCHILL SENSATION 028X (SOD){DLF,HYF,IEF,MDF,DBF}
UPS SENSATION 2296 ET (SOD){DLF,HYF,IEF,MSUDF,MDF,DBF}
 43311175 UPS JT MISS NEON 7811 1ET (DLF,HYF,IEF,DBP)



WORROWEN TANKERAY Y79D ET (DLF,HYF,IEF,MSUDF,DBP)
RST 6AT NST Y79D LADY 548 ET (DLF,HYF,IEF,MSUDF,MDF,DBF)
 P43514995 H H LADY MAXIUM 111 ET (DLF,HYF,IEF)

UPS DOMINO 302T (SOD){CHB}{DLF,HYF,IEF,MSUDF,MDF}
 CHURCHILL LADY 7202T ET (DLF,HYF,IEF)
 GH NEON 17N (SOD){CHB}{DLF,HYF,IEF,MSUDF}
 LCCTWO TIMIN 438 ET (DLF,HYF,IEF,DBP)

NJW FHF 9710 TANK 45P (SOD){DLF,HYF,IEF,MDF}
 BR KLD ROSE MARIE D79 ET (DLF,HYF,IEF,MSUDF,DBP)
 GOLDEN-OAK 4J MAXIUM 28M (SOD){DLF,HYF,IEF}
 HH MISS ADVANCE 5139R ET (DLF,HYF,IEF)

| CE | BW | WW | YW | DMI | SC | SCF | MM | M&G | MCE |
|------|------|------|-----|-------|------|-------|-------|------|------|
| -7.7 | 8.7 | 71 | 112 | 0.7 | 1.2 | 16.3 | 20 | 56 | -7.5 |
| MCW | UDDR | TEAT | CW | FAT | REA | MARB | BMI\$ | BIIS | CHBS |
| 138 | 1.30 | 1.30 | 86 | 0.051 | 0.96 | -0.10 | 361 | 432 | 108 |



H DEBERARD 7454 ET



LOT 1 — B DEBERARD 20100

1 | B DEBERARD 20100 {DLF,HYF,IEF,MSUDF,MDF}

P44373226 | Calved: 4/16/22 | Tattoo: BE 20100

UPS SENSATION 2296 ET {SDD}{DLF,HYF,IEF,MSUDF,MDF,DBC}
H DEBERARD 7454 ET {DLF,HYF,IEF,MSUDF,MDF,DBF}
P43799239 RST GAT NST Y79D LADY 54B ET {DLF,HYF,IEF,MSUDF,MDF,DBF}



EFBEEF RESOLUTE CEO {CHB}{DLF,HYF,IEF,MSUDF,MDF,DBF}

HMS EXCEL 7241 {DLF,HYF,IEF,MDF}
P43799154 H MS 824 EXCEL 4174 ET {MDF}

CHURCHILL SENSATION 028X {SDD}{DLF,HYF,IEF,MDF,DBF}
UPS JT MISS NEON 7811 IET {DLF,HYF,IEF,DBP}
WORR OWEN TANKERAY Y79D ET {DLF,HYF,IEF,MSUDF,DBP}
H H LADY MAXIUM 111 ET {DLF,HYF,IEF}

KCF BENNETT REVOLUTION X51 {SDD}{CHB}{DLF,HYF,IEF,MDF,DBF}
EFBEEF 6378 KATE W484 {DLF,HYF,IEF,MSUDF}
NJW 73S W18 HOMETOWN 10Y ET {SDD}{CHB}{DLF,HYF,IEF,MSUDF,MDC}
H LADY EXCELL 824 ET {DLF,HYF,IEF}

| CE | BW | WW | YW | DMI | SC | SCF | MM | M&G | MCE |
|------|------|------|-----|-------|------|------|-------|------|------|
| -0.3 | 6.6 | 59 | 108 | 0.5 | 1.4 | 13.7 | 17 | 47 | -3.0 |
| MCW | UDDR | TEAT | CW | FAT | REA | MARB | BMI\$ | BIIS | CHBS |
| 141 | 1.20 | 1.20 | 77 | 0.051 | 0.78 | 0.30 | 338 | 422 | 145 |

- Scurred.
- A great way to lead off the lineup, 20100 has as much muscle and ribeye as any bull in the sale.
- A high performing big testicled bull who is easy fleshing, uniformly deep bodied, extremely thick, and ideal in his feet and legs.



RST GAT NST Y79D LADY 54B ET — PATERNAL GRANDAM OF LOT 1-4

2 | B DEBERARD 20093 {DLF,HYF,IEF,MSUDF,MDF}

44372144 | Calved: 4/11/22 | Tattoo: BE 20093

UPS SENSATION 2296 ET (SOD) {DLF,HYF,IEF,MSUDF,MDF,DBF}

H DEBERARD 7454 ET (DLF,HYF,IEF,MSUDF,MDF,DBF)

P43799239 RST GAT NST Y790 LADY 54B ET (DLF,HYF,IEF,MSUDF,MDF,DBF)



NJW 76S P20 BEEF 38W ET (SOD) {DLF,HYF,IEF,MSUDF,MDF}

ABC MS 38W BLAZE 6013 (HYP)

P43754513 ABC MS 100W BLAZE 4033 (HYP)

CHURCHILL SENSATION 028X (SOD) {DLF,HYF,IEF,MDF,DBF}

UPS JT MISS NEON 7811 IET (DLF,HYF,IEF,DBP)

WORR OWEN TANKERAY Y790 ET (DLF,HYF,IEF,MSUDF,DBP)

H H LADY MAXIUM 111 ET (DLF,HYF,IEF)

SHF PROGRESS P20 (SOD) {DLF,HYF,IEF,MDF,DBF}

NJW 55N STARDUST 76S (DLF,HYF,IEF,MSUDF,MDF)

NJW 73S M326 TRUST 100W ET (SOD) {CHB} {DLF,HYF,IEF,MSUDF,MDF,DBF}

ABC MS 0075 BLAZE 5004 (HYP)

| CE | BW | WW | YW | DMI | SC | SCF | MM | M&G | MCE |
|------|------|------|-----|-------|------|-------|-------|------|------|
| -0.1 | 4.8 | 60 | 101 | 0.6 | 1.3 | 13.2 | 25 | 55 | -2.5 |
| MCW | UDDR | TEAT | CW | FAT | REA | MARB | BMI\$ | BIIS | CHBS |
| 118 | 1.20 | 1.20 | 83 | 0.001 | 0.75 | -0.14 | 309 | 365 | 108 |

- Horned.
- Rugged, massive, funtional bull who reads herd bull from every angle.
- Length of body and performace will breed true is his offspring.



LOT 2 – B DEBERARD 20093

3 | B DEBERARD 20106 {DLF,HYF,IEF,MSUDF,MDF}

44373231 | Calved: 5/1/22 | Tattoo: BE 20106

UPS SENSATION 2296 ET (SOD) {DLF,HYF,IEF,MSUDF,MDF,DBF}

H DEBERARD 7454 ET (DLF,HYF,IEF,MSUDF,MDF,DBF)

P43799239 RST GAT NST Y790 LADY 54B ET (DLF,HYF,IEF,MSUDF,MDF,DBF)



C&S 9075 ADVANCE 2039 (DLF,HYF,IEF)

ABC MS 2039 OLERA DOM 4017 (HYP)

43542012 ABC MS BANDOLERA 1018 (DOD) {HYP}

CHURCHILL SENSATION 028X (SOD) {DLF,HYF,IEF,MDF,DBF}

UPS JT MISS NEON 7811 IET (DLF,HYF,IEF,DBP)

WORR OWEN TANKERAY Y790 ET (DLF,HYF,IEF,MSUDF,DBP)

H H LADY MAXIUM 111 ET (DLF,HYF,IEF)

HH ADVANCE 9075W ET (SOD) {DLF,HYF,IEF}

K&B MS 6067 EXCEL 9146W (DLF,HYF,IEF)

K&B BANDIDO 8227U ET (CHB) {DLF,HYF,IEF}

ABC MS 5063 BLAZE 8035 (HYP)

| CE | BW | WW | YW | DMI | SC | SCF | MM | M&G | MCE |
|-----|------|------|----|-------|------|------|-------|------|------|
| 0.7 | 5.6 | 56 | 91 | 0.4 | 1.5 | 18.1 | 23 | 51 | -0.7 |
| MCW | UDDR | TEAT | CW | FAT | REA | MARB | BMI\$ | BIIS | CHBS |
| 89 | 1.20 | 1.30 | 61 | 0.041 | 0.63 | 0.02 | 361 | 428 | 91 |

- Horned.
- Really attractive level made bull with lots of presence and length.
- Wide topped, square pinned and powerful through his quarter.



LOT 3 – B DEBERARD 20106

4 | H B DEBERARD 20090 {DLF,HYF,IEF,MSUDF,MDF}

44432136 | Calved: 4/9/22 | Tattoo: BE 20090

UPS SENSATION 2296 ET (SOD) {DLF,HYF,IEF,MSUDF,MDF,DBF}

H DEBERARD 7454 ET (DLF,HYF,IEF,MSUDF,MDF,DBF)

P43799239 RST GAT NST Y790 LADY 54B ET (DLF,HYF,IEF,MSUDF,MDF,DBF)



KJ HVH 33N REDEEM 485T ET (SOD) {DLF,HYF,IEF,MDF,DBF}

SR W49 BRISTOL 4146 ET (DLF,HYF,IEF,MSUDF)

P43490568 GO MS 7195 ADVANCE W49 (DLF,HYF,IEF,MSUDF)

CHURCHILL SENSATION 028X (SOD) {DLF,HYF,IEF,MDF,DBF}

UPS JT MISS NEON 7811 IET (DLF,HYF,IEF,DBP)

WORR OWEN TANKERAY Y790 ET (DLF,HYF,IEF,MSUDF,DBP)

H H LADY MAXIUM 111 ET (DLF,HYF,IEF)

SHF RADAR M326 R125 (SOD) {DLF,HYF,IEF}

HVH OKSANA 4L 33N (DLF,HYF,IEF,DBP)

HH ADVANCE 7195T (SOD) {DLF,HYF,IEF}

GO MS 3196 ADVANCE S19 (DLP,HYP,IEP)

| CE | BW | WW | YW | DMI | SC | SCF | MM | M&G | MCE |
|-----|------|------|-----|-------|------|-------|-------|------|------|
| 0.2 | 5.7 | 67 | 103 | 0.6 | 1.1 | 16.7 | 17 | 51 | -3.9 |
| MCW | UDDR | TEAT | CW | FAT | REA | MARB | BMI\$ | BIIS | CHBS |
| 99 | 1.40 | 1.40 | 76 | 0.051 | 0.72 | -0.11 | 345 | 414 | 93 |

- Polled.
- A dimensional, shapely, moderate framed bull.
- This heavy pigmented Deberard son is big ribbed and sound made.



LOT 4 – H B DEBERARD 20090



LOT 5 – B BELL RINGER 20063

5 | B BELL RINGER 20063

P44373769 | Calved: 3/20/22 | Tattoo: BE 20063

BR BELLE AIR 6011 (CHB) (DLF,HVF,IEF,MSUDF,DBF)
H BELL RINGER 8459 ET (DLF,HVF,IEF,MDF,DBF)
P43915089 BRL ENVY 401A (DLF,HVF,IEF,MSUDF)

BAR SLHF 028 240 (CHB) (DLF,HVF,IEF)
BR BELLE 4082 ET (DLF,HVF,IEF,MSUDF)
CRR 719 TULO 928 (SOD) (DLF,HVF,IEF)
BRL CATE W4100 (HVP)

CRR ABOUT TIME 743 (SOD) (DLF,HVF,IEF,MDF)
H BL MISS SPICE 608 ET (DBP)
P43713527 H AC MARIANNE 231 ET (DLF,HVF,IEF,DBP)

THM DURANGO 4037 (SOD) (DLF,HVF,IEF)
CRR 003 CASSIE 206 (DLF,HVF,IEF)
GOLDEN OAK OUTCROSS 18U (SOD) (DLF,HVF,IEF,MSUDF)
H VICTORY 600 ET (DLF,IEF,DBP)

| CE | BW | WW | YW | DMI | SC | SCF | MM | M&G | MCE |
|-----|------|------|-----|-------|------|------|-------|------|------|
| 0.5 | 3.6 | 63 | 102 | 0.2 | 1.3 | 16.5 | 25 | 56 | 0.2 |
| MCW | UDDR | TEAT | CW | FAT | REA | MARB | BMI\$ | BIIS | CHBS |
| 109 | 1.30 | 1.20 | 66 | 0.021 | 0.44 | 0.19 | 361 | 446 | 122 |

- Lightly Scurred.
- One of my favorite bulls we have offered. His mother is a lead donor and has a bright future in our program.
- A goggle eyed, heavy structured bull with lots of muscle and an ideal build.
- DBP.



BRL ENVY 401A – PATERNAL GRANDAM OF LOTS 5, 6, 7, 8, 9, 10

6

B BELL RINGER 20069 {DLF,HYF,IEF,MSUDF,MDF,DBP}

44370409 | Calved: 3/4/22 | Tattoo: BE 20069

BR BELLE AIR 6011 (CHB) {DLF,HYF,IEF,MSUDF,DBF}
H BELL RINGER 8459 ET {DLF,HYF,IEF,MDF,DBF}
 P43915089 BRL ENVY 401A {DLF,HYF,IEF,MSUDF}



NJW 135U 10Y HOMETOWN 27A {DLF,HYF,IEF,MSUDF,MDC}
HRW TERRI 8332 ET {DLF,HYF,IEF,MSUDF,MDF,DBP}
 P43916346 EXR TERRI 489 {DLF,HYF,IEF,MSUDF,DBP}

BAR SLHF 028 240 (CHB) {DLF,HYF,IEF}
 BR BELLE 4082 ET {DLF,HYF,IEF,MSUDF}
 CRR 719 TULO 928 {SOD} {DLF,HYF,IEF}
 BRL CATE W4100 {HVP}

NJW 73S W18 HOMETOWN 10Y ET {SOD} {CHB} {DLF,HYF,IEF,MSUDF,MDC}
 NJW 4037 34S DURANGO VACA 135U {DOD} {DLF,HYF,IEF,MSUDF}
 MSU TCF REVOLUTION 4R {SOD} {DLF,HYF,IEF,MDF,DBC}
 BR TERRI 9130 ET {DLF,HYF,IEF,DBP}

| CE | BW | WW | YW | DMI | SC | SCF | MM | M&G | MCE |
|-----|------|------|-----|-------|------|------|-------|------|------|
| 3.1 | 3.2 | 64 | 103 | 0.7 | 1.6 | 11.5 | 28 | 60 | 4.1 |
| MCW | UDDR | TEAT | CW | FAT | REA | MARB | BMI\$ | BIIS | CHBS |
| 117 | 1.30 | 1.20 | 93 | 0.051 | 0.62 | 0.24 | 306 | 392 | 147 |

- Horned.
- Everyone who has stopped at the ranch has been quick to find this Bell Ringer son.
- He's rugged, big footed, exceptionally sound, yet still comes with eye appeal and muscle.



LOT 6 – B BELL RINGER 20069



EXR TERRI 489 — MATERNAL GRANDAM OF LOT 6



KJ 804P MARGO 426T — MATERNAL GRANDAM OF LOT 7

7

B BELL RINGER 20080 {DLF,HYF,IEF,MSUDF,MDF,DBP}

44370452 | Calved: 3/25/22 | Tattoo: BE 20080

BR BELLE AIR 6011 (CHB) {DLF,HYF,IEF,MSUDF,DBF}
H BELL RINGER 8459 ET {DLF,HYF,IEF,MDF,DBF}
 P43915089 BRL ENVY 401A {DLF,HYF,IEF,MSUDF}



NJW 135U 10Y HOMETOWN 27A {DLF,HYF,IEF,MSUDF,MDC}
H MARGO 807 ET {MDF,DBP}
 P43958077 KJ 804P MARGO 426T {DLF,HYF,IEF,DBP}

BAR SLHF 028 240 (CHB) {DLF,HYF,IEF}
 BR BELLE 4082 ET {DLF,HYF,IEF,MSUDF}
 CRR 719 TULO 928 {SOD} {DLF,HYF,IEF}
 BRL CATE W4100 {HVP}

NJW 73S W18 HOMETOWN 10Y ET {SOD} {CHB} {DLF,HYF,IEF,MSUDF,MDC}
 NJW 4037 34S DURANGO VACA 135U {DOD} {DLF,HYF,IEF,MSUDF}
 KJ C&L J119 MARKSMAN 045R ET {SOD} {DBP}
 KJ 045 LENA 804P ET {DLF,HYF,IEF,DBP}

| CE | BW | WW | YW | DMI | SC | SCF | MM | M&G | MCE |
|------|------|------|-----|-------|------|------|-------|------|------|
| -1.9 | 4.6 | 70 | 117 | 0.5 | 1.4 | 17.6 | 23 | 58 | 3.4 |
| MCW | UDDR | TEAT | CW | FAT | REA | MARB | BMI\$ | BIIS | CHBS |
| 117 | 1.30 | 1.20 | 73 | 0.031 | 0.42 | 0.32 | 387 | 488 | 140 |

- Horned.
- Dark red heavy structured bull.
- He's long-spined and gets out and fills his tracks on the move.



LOT 7 – B BELL RINGER 20080



LOT 8 – B BELL RINGER 20082

8 | B BELL RINGER 20082 {DLF,HYF,IEF,MSUDF,MDF}

44370454 | Calved: 3/26/22 | Tattoo: BE 20082

BR BELLE AIR 6011 (CHB) (DLF,HYF,IEF,MSUDF,DBF)
H BELL RINGER 8459 ET (DLF,HYF,IEF,MDF,DBF)
 P43915089 BRL ENVY 401A (DLF,HYF,IEF,MSUDF)



H/TSR/CHEZ/FULL THROTTLE ET (SOD) (DLF,HYF,IEF,DBF)

HMS BLAZER 723 ET
 P43799147 RST MS 1000 BLAZER 2029 (DOD) (DLF,HYF,IEF)

BAR SLHF 028 240 (CHB) (DLF,HYF,IEF)
 BR BELLE 4082 ET (DLF,HYF,IEF,MSUDF)
 CRR 719 TULO 928 (SOD) (DLF,HYF,IEF)
 BRL CATE W4100 (HYP)

H WCC/WB 668 WYARNO 9500 ET (SOD) (DLF,HYF,IEF)
 R SWEET RED WINE 039 (DLF,HYF,IEF,DBP)
 MJB BLAZER 1000 (SOD)
 MSRST 858 VICTOR 9059

| CE | BW | WW | YW | DMI | SC | SCF | MM | M&G | MCE |
|------|------|------|-----|-------|------|------|-------|------|------|
| -4.1 | 3.1 | 68 | 112 | 0.4 | 1.1 | 21.9 | 24 | 59 | -1.6 |
| MCW | UDDR | TEAT | CW | FAT | REA | MARB | BMI\$ | BIIS | CHBS |
| 95 | 1.20 | 1.30 | 68 | 0.061 | 0.26 | 0.26 | 434 | 534 | 123 |

- Horned.
- Moterate framed, masculine, thick ended bull that offers the added cosmetic features.



LOT 9 – B BELL RINGER 20097

9 | B BELL RINGER 20097 {DLF,HYF,IEF,MSUDF,MDF}

44373223 | Calved: 4/14/22 | Tattoo: BE 20097

BR BELLE AIR 6011 (CHB) (DLF,HYF,IEF,MSUDF,DBF)
H BELL RINGER 8459 ET (DLF,HYF,IEF,MDF,DBF)
 P43915089 BRL ENVY 401A (DLF,HYF,IEF,MSUDF)



CRR 719 CATAPULT 109 (SOD) (DLF,HYF,IEF,MDF)

WS SILVER CAT 710
 P43837586 WSSILVER LININGS 414 ET

BAR SLHF 028 240 (CHB) (DLF,HYF,IEF)
 BR BELLE 4082 ET (DLF,HYF,IEF,MSUDF)
 CRR 719 TULO 928 (SOD) (DLF,HYF,IEF)
 BRL CATE W4100 (HYP)

TH 122711 VICTOR 719T (SOD) (DLF,HYF,IEF,MSUDF,MDF)
 CRR 4037 ECLIPSE 808 (DLF,HYF,IEF)
 HW4 LIGHTS OUT 2015 ET (SOD) (CHB) (DLF,HYF,IEF)
 K&B MS SILVER ADVANCE 7093T (DLF,HYF,IEF)

| CE | BW | WW | YW | DMI | SC | SCF | MM | M&G | MCE |
|------|------|------|-----|-------|------|------|-------|------|------|
| -0.4 | 3.5 | 62 | 105 | 0.6 | 1.5 | 16.6 | 29 | 60 | 1.9 |
| MCW | UDDR | TEAT | CW | FAT | REA | MARB | BMI\$ | BIIS | CHBS |
| 100 | 1.20 | 1.10 | 65 | 0.001 | 0.38 | 0.22 | 353 | 438 | 119 |

- Horned.
- High quality look and build in this Bell Ringer son.
- Ideal feet and legs, extended through his front end.
- Top 20% marbling and yearling weight.



LOT 10 – B BELL RINGER 20096

10 | B BELL RINGER 20096 {DLF,HYF,IEF,MSUDF,MDF}

44372146 | Calved: 4/13/22 | Tattoo: BE 20096

BR BELLE AIR 6011 (CHB) (DLF,HYF,IEF,MSUDF,DBF)
H BELL RINGER 8459 ET (DLF,HYF,IEF,MDF,DBF)
 P43915089 BRL ENVY 401A (DLF,HYF,IEF,MSUDF)



CRR 719T FLEXX 210 (DLF,HYF,IEF)

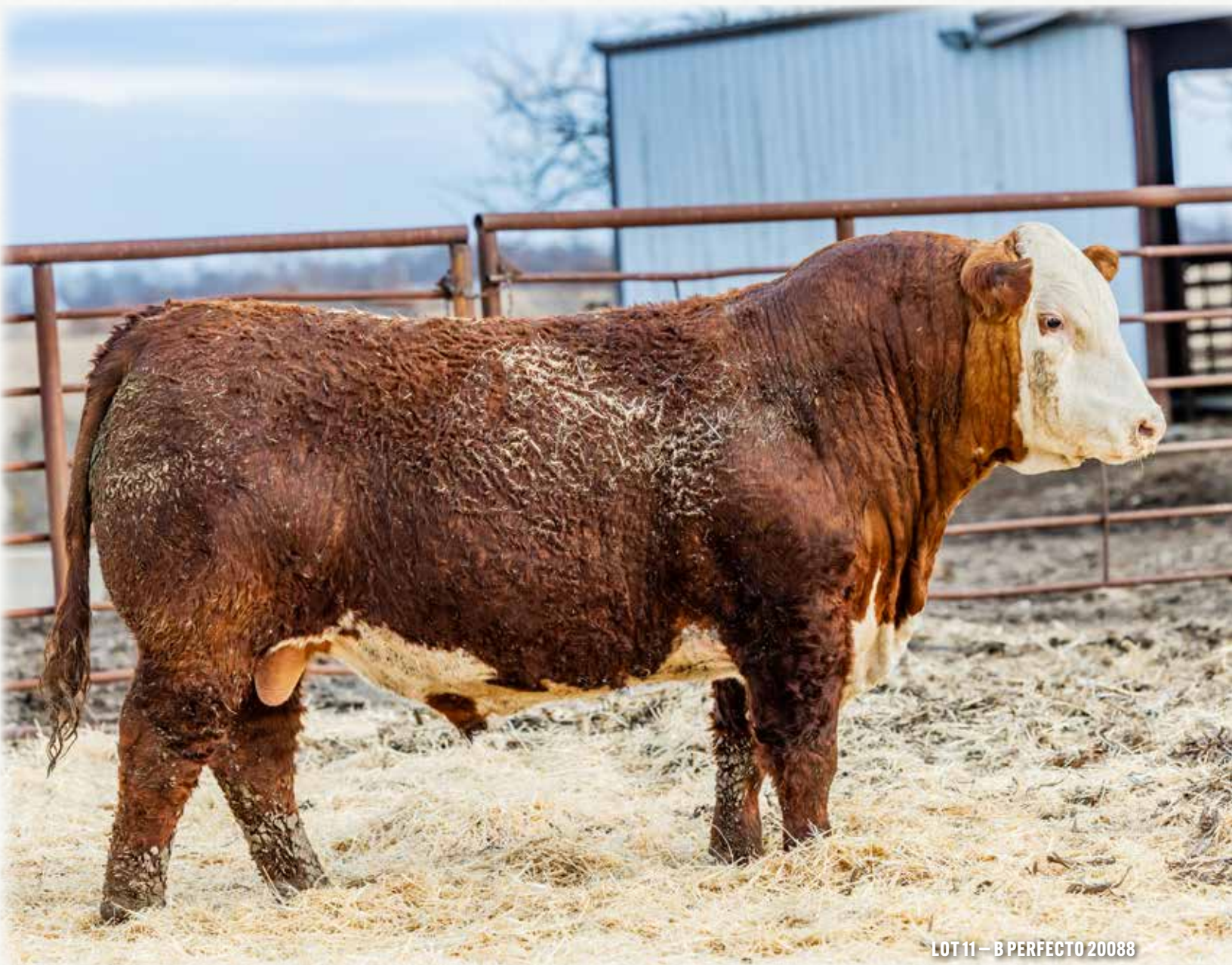
SKI 210 MARY 1610
 43736468 /SLADY JET 2104Z

BAR SLHF 028 240 (CHB) (DLF,HYF,IEF)
 BR BELLE 4082 ET (DLF,HYF,IEF,MSUDF)
 CRR 719 TULO 928 (SOD) (DLF,HYF,IEF)
 BRL CATE W4100 (HYP)

TH 122711 VICTOR 719T (SOD) (DLF,HYF,IEF,MSUDF,MDF)
 CRR 420 ECLIPSE 688 (DLF,HYF,IEF)
 JET MR L513 (SOD) (DLF,HYF,IEF)
 JET MS K018 (DLF,HYF,IEF)

| CE | BW | WW | YW | DMI | SC | SCF | MM | M&G | MCE |
|-----|------|------|-----|--------|------|-------|-------|------|------|
| 0.7 | 3.3 | 59 | 100 | 0.4 | 1.1 | 9.4 | 27 | 56 | 2.4 |
| MCW | UDDR | TEAT | CW | FAT | REA | MARB | BMI\$ | BIIS | CHBS |
| 93 | 1.15 | 1.10 | 73 | -0.004 | 0.62 | -0.02 | 249 | 310 | 111 |

- Polled.
- Good pigmented red to the ground.
- Heavy structured bull who is Top 25% YW and Top 20% REA, FAT.



LOT 11 — B PERFECTO 20088

11 | B PERFECTO 20088 {DLF,HYF,IEF,MSUDF,MDF}

P44372126 | Calved: 4/5/22 | Tattoo: BE 20088

NJW 98S R117 RIBEYE 88X ET (SOD){DLF,HYF,IEF,MSUDF,MDF,DBF}
LCX PERFECTO 11B ET (DLF,HYF,IEF,MSUDF)
P43517583 WLL ZOXY 3Z (DLF,HYF,IEF)



CHURCHILL SENSATION 028X (SOD){DLF,HYF,IEF,MDF,DBF}
HMS DOMINO 5090
43582753 H GO MS 8050 DOMINO 3326 ET

SHF RIB EYE M326 R117 (SOD){CHB}{DLF,HYF,IEF}
NJW 9126J DEW DOMINO 98S (DOD){DLF,HYF,IEF}
TH 122711 VICTOR 719T (SOD){DLF,HYF,IEF,MSUDF,MDF}
WLL VENUS 19X (HYP)

UPS DOMINO 3027 (SOD){CHB}{DLF,HYF,IEF,MSUDF,MDF}
CHURCHILL LADY 7202T ET (DLF,HYF,IEF)
HH ADVANCE 8050U ET (SOD){DLF,HYF,IEF}
GO MS 293 MARK DOM L57 (DLF,HYF,IEF)

| CE | BW | WW | YW | DMI | SC | SCF | MM | M&G | MCE |
|-----|------|------|----|--------|------|------|-------|-------|-------|
| 8.6 | 0.2 | 53 | 74 | 0.1 | 0.9 | 31.6 | 38 | 65 | 8.3 |
| MCW | UDDR | TEAT | CW | FAT | REA | MARB | BMI\$ | BIU\$ | CHB\$ |
| 52 | 1.30 | 1.40 | 61 | -0.009 | 0.43 | 0.02 | 562 | 635 | 96 |

- Polled.
- A son of the popular Perfecto 11B may be the most complete option in the sale. Truly impressive in his EPD profile and the phenotype he couples with it.
- A high CE, low BW bull who is wide based, big middled, square and stout from behind while still being sure footed and sound.



WLL ZOXY 3Z — PATERNAL GRANDAM OF LOT 11



LOT 12 — B DOMINATE 20070

12 | B DOMINATE 20070 {DLF,HYF,IEF,MSUDF,MDF}

P44370408 | Calved: 3/2/22 | Tattoo: BE 20070

BCC DOMINATOR 619D (CHB) (DLF,HYF,IEF,MDF)
SR DOMINATE 308F ET (CHB) (DLF,HYF,IEF,MSUDF,MDF)
 43954712 CHURCHILL LADY 1162Y ET (DLF,HYF,IEF,MSUDF,MDF)



NJW 76S P20 BEEF 38W ET (SOD) (DLF,HYF,IEF,MSUDF,MDF)
ABC MS 38W DOMINETT 5009 (DLF,HYF,IEF,MSUDF)
 P43648187 ABC MS 0003 ADV DOMINETT 3093

CL 1 DOMINO 215Z (SOD) (CHB) (DLF,HYF,IEF,MSUDF,MDF)
 BCC MISS BELL 206Z (DLF,HYF,IEF,MSUDF)
 GOLDEN OAK OUTCROSS 18U (SOD) (DLF,HYF,IEF,MSUDF)
 DCC 8006 PATTI 4266 ET (DLF,HYF,IEF)
 SHF PROGRESS P20 (SOD) (DLF,HYF,IEF,MDF,DBF)
 NJW 55N STARDUST 76S (DLF,HYF,IEF,MSUDF,MDF)
 C&S 3027 ADVANCE DOM 0003 ET (DLF,HYF,IEF)
 ABC MS 2218 DOM 5036 (DLF,HYF,IEF)

| CE | BW | WW | YW | DMI | SC | SCF | MM | M&G | MCE |
|-----|------|------|----|-------|------|------|-------|------|------|
| 9.8 | 1.4 | 40 | 66 | 0.2 | 0.9 | 16.9 | 30 | 50 | 8.2 |
| MCW | UDDR | TEAT | CW | FAT | REA | MARB | BMI\$ | BIIS | CHBS |
| 45 | 1.30 | 1.40 | 55 | 0.001 | 0.37 | 0.10 | 336 | 392 | 95 |

- Scurred.
- If you plan on keeping heifers back this is the bull you need on your short list. A balanced long bodied bull who is flawless in his feet and legs, deep sided and carries a world of muscle.
- High CE low BW Dominate son who checks all the boxes.



LOT 13 — B DOMINATE 20083

13 | B DOMINATE 20083 {DLF,HYF,IEF,MSUDF,MDF}

44370455 | Calved: 3/26/22 | Tattoo: BE 20083

BCC DOMINATOR 619D (CHB) (DLF,HYF,IEF,MDF)
SR DOMINATE 308F ET (CHB) (DLF,HYF,IEF,MSUDF,MDF)
 43954712 CHURCHILL LADY 1162Y ET (DLF,HYF,IEF,MSUDF,MDF)



C&S 0130 DOMINO 3061 ET (DLF,HYF,IEF)
C&S MS 3061 ADVANCE 6095
 43744105 C&S MS 9075 ADVANCE 2018 (DLF,HYF,IEF,MSUDF)

CL 1 DOMINO 215Z (SOD) (CHB) (DLF,HYF,IEF,MSUDF,MDF)
 BCC MISS BELL 206Z (DLF,HYF,IEF,MSUDF)
 GOLDEN OAK OUTCROSS 18U (SOD) (DLF,HYF,IEF,MSUDF)
 DCC 8006 PATTI 4266 ET (DLF,HYF,IEF)
 CL 1 DOMINO 0130X 1ET (SOD) (CHB) (DLF,HYF,IEF)
 C&S MS 7057 DESTINY 1048 (DLF,HYF,IEF)
 HH ADVANCE 9075W ET (SOD) (DLF,HYF,IEF)
 C&S MS 0075 BLAZE 4025 (HYF)

| CE | BW | WW | YW | DMI | SC | SCF | MM | M&G | MCE |
|------|------|------|-----|-------|------|------|-------|------|------|
| -0.1 | 3.1 | 61 | 101 | 0.4 | 1.3 | 13.5 | 34 | 65 | 5.1 |
| MCW | UDDR | TEAT | CW | FAT | REA | MARB | BMI\$ | BIIS | CHBS |
| 87 | 1.30 | 1.20 | 89 | 0.011 | 0.70 | 0.19 | 341 | 420 | 152 |

- Horned.
- A big, high performing bull who is deep sided and measured with the biggest SC of the entire sale.

HERE'S HOW IT WORKS

LiveAuctions.TV

Go to www.LiveAuctions.tv. Please note that you do NOT need an account to watch the auction, but you do need to register an account and request a buyer number if you wish to bid. If you have not created a new account since September 1st, 2020 you will need to click "Register" in the top right corner of the homepage and create a new account. Once you have completed the form on this registration page and hit the "Register" button you will receive an e-mail with a place to click on to verify you have entered a valid e-mail address. Once you have completed this registration process, find the auction you are interested in on the homepage and click on it (sales are listed in chronological order). You should then see a box that says Login. Now that you have an account with LiveAuctions just type in your E-mail Address and Password. You will now see a hyperlink at the top that says "Request a Buyer Number". The first time you request your first buyer number on LiveAuctions it will send you a text message with a verification code in it. Type the code from the text message into the area requiring it and you will then see your name along with a buyer number listed at the top of the webpage where the live video is and you will be able to bid. You will only have to complete this two-step verification process one time. After that you will be able to immediately request a buyer number on any auction without verification through an e-mail or text message again.

LiveAuctions no longer requires an app. If you wish to view/register/bid on a smartphone just type LiveAuctions.tv in whatever web browser you use. The registration process is the same as it is on a desktop computer, but the website is built mobile friendly. Click on the three lines in the top right corner to access the menus.

Bidders who are successful in making purchases will be contacted by the ranch after the auction to settle payment and discover your shipping plans.

If you need help registering to bid or to view the auction please call Technical Support at (682) 816-4900 or e-mail us at TechSupport@LiveAuctions.tv.



LOT 14 — B DOMINO 20089

14 | B DOMINO 20089 {DLF,HYF,IEF,MSUDF,MDF}

44372128 | Calved: 4/5/22 | Tattoo: BE 20089

HH ADVANCE 5044C ET {DLF,HYF,IEF,MSUDF}
CL 1 DOMINO 7131E 1ET {CHB}{DLF,HYF,IEF,MSUDF}
 43810450 CL 1 DOMINETTE 3175A {DLF,HYF,IEF}

CL 1 DOMINO 215Z {SDD}{CHB}{DLF,HYF,IEF,MSUDF,MDF}
 HH MISS ADVANCE 1072Y ET {DLF,HYF,IEF}
 CL 1 DOMINO 1161Y {DLF,HYF,IEF}
 CL 1 DOMINETTE 1123Y 1ET {DLF,HYF,IEF}

C&S 3027 ADVANCE DOM 0003 ET {DLF,HYF,IEF}
HABC MS 0003 RED BLAZE 7068 {HYP}
 43842641 ABC MS 7102 RED BLAZE 2071 {HYP}

UPS DOMINO 3027 {SDD}{CHB}{DLF,HYF,IEF,MSUDF,MDF}
 C&S MS 688 ADVANCE 9024 {DLF,HYF,IEF}
 K&B RED FELTON 7102T {DLF,HYF,IEF}
 ABC MS 0075 BLAZE 5004 {HYP}

| CE | BW | WW | YW | DMI | SC | SCF | MM | M&G | MCE |
|-----|------|------|----|-------|------|------|-------|------|------|
| 0.7 | 3.8 | 55 | 95 | 0.4 | 1.2 | 14.3 | 29 | 57 | 3.3 |
| MCW | UDDR | TEAT | CW | FAT | REA | MARB | BMI\$ | BIIS | CHBS |
| 95 | 1.25 | 1.20 | 75 | 0.006 | 0.55 | 0.12 | 330 | 400 | 125 |

- Horned.
- An impressive 7131 son, he's a power bull who's long spined, big muscled, with big feet and legs. Matched with his structural angles and soundness he is a sale highlight.





LOT 15 – B DOMINO 20074

15 | B DOMINO 20074 {DLF,HYF,IEF,MSUDF,MDF}

44370445 | Calved: 3/11/22 | Tattoo: BE 20074

HH ADVANCE 5044C ET (DLF,HYF,IEF,MSUDF)
CL 1 DOMINO 7131E 1ET (CHB) (DLF,HYF,IEF,MSUDF)
 43810450 CL 1 DOMINETTE 3175A (DLF,HYF,IEF)



H5 9131 DOMINO 2185 (SOD) (DLF,HYF,IEF)
H MISS ADVANCE 7434 ET
 P43799221 HH MISS ADVANCE 1181Y ET (DLF,HYF,IEF)

CL 1 DOMINO 215Z (SOD) (CHB) (DLF,HYF,IEF,MSUDF,MDF)
 HH MISS ADVANCE 1072Y ET (DLF,HYF,IEF)
 CL 1 DOMINO 1161Y (DLF,HYF,IEF)
 CL 1 DOMINETTE 1123Y 1ET (DLF,HYF,IEF)

H5 YANKEE 9131 (DLF,HYF,IEF)
 H5 MS 408 DOMET 915 (DOD) (DLF,HYF,IEF)
 HH ADVANCE 7034T ET (DLF,HYF,IEF)
 HH MISS ADVANCE 5139R ET (DLF,HYF,IEF)

| CE | BW | WW | YW | DMI | SC | SCF | MM | M&G | MCE |
|-----|------|------|-----|-------|------|------|-------|-------|-------|
| 1.1 | 4.4 | 64 | 109 | 0.1 | 1.5 | 12.0 | 27 | 58 | 0.2 |
| MCW | UDDR | TEAT | CW | FAT | REA | MARB | BMI\$ | BIJ\$ | CHB\$ |
| 117 | 1.30 | 1.40 | 84 | 0.071 | 0.36 | 0.12 | 310 | 389 | 140 |

- Horned.
- Massive, stout, cattlemen's kind of a bull.
- Dark red fully pigmented bull who is functional and sound in his build. Big topped square hipped.
- Top 10% YW, CW, TEAT. Top 20% WW, CHB.



HH MISS ADVANCE 5139R – PATERNAL GRANDAM OF LOTS 15 & 20



LOT 16 – B DOMINO 20095

16 | B DOMINO 20095 {DLF,HYF,IEF,MSUDF,MDF}

44372145 | Calved: 4/13/22 | Tattoo: BE 20095

HH ADVANCE 5044C ET (DLF,HYF,IEF,MSUDF)
CL 1 DOMINO 7131E 1ET (CHB) (DLF,HYF,IEF,MSUDF)
 43810450 CL 1 DOMINETTE 3175A (DLF,HYF,IEF)



CRR 719T FLEX 210 (DLF,HYF,IEF)
SKI 210 LANORE 1710 (DBP)
 P44110774 MSU LANORE 155 (DLF,HYF,IEF,DBP)

CL 1 DOMINO 215Z (SOD) (CHB) (DLF,HYF,IEF,MSUDF,MDF)
 HH MISS ADVANCE 1072Y ET (DLF,HYF,IEF)
 CL 1 DOMINO 1161Y (DLF,HYF,IEF)
 CL 1 DOMINETTE 1123Y 1ET (DLF,HYF,IEF)

TH 122711 VICTOR 719T (SOD) (DLF,HYF,IEF,MSUDF,MDF)
 CRR 420 ECLIPSE 688 (DLF,HYF,IEF)
 REMITALL ONLINE 122L (SOD) (CHB) (DLF,HYF,IEF,DBC)
 MSU DOMINETTE 25E (HYP)

| CE | BW | WW | YW | DMI | SC | SCF | MM | M&G | MCE |
|------|------|------|-----|-------|------|------|-------|-------|-------|
| -0.5 | 4.2 | 69 | 113 | 0.2 | 1.4 | 10.3 | 28 | 63 | 2.6 |
| MCW | UDDR | TEAT | CW | FAT | REA | MARB | BMI\$ | BIJ\$ | CHB\$ |
| 142 | 1.20 | 1.30 | 75 | 0.041 | 0.18 | 0.12 | 277 | 361 | 127 |

- Horned.
- Long bodied, extended, high performing bull with a tremendous amount of muscle and shape. Top 10% WW and YW.
- DBP.



LOT 17 – B DOMINO 20085

17 | B DOMINO 20085 {DLF,HYF,IEF,MSUDF,MDF}

44370458 | Calved: 3/30/22 | Tattoo: BE 20085

HH ADVANCE 5044C ET {DLF,HYF,IEF,MSUDF,MDF}
CL 1 DOMINO 7131E 1ET {CHB}{DLF,HYF,IEF,MSUDF,MDF}
 43810450 CL 1 DOMINETTE 3175A {DLF,HYF,IEF}



HH ADVANCE 4075B ET {DLF,HYF,IEF,MSUDF,MDF}
H MARIAH 7400 ET {MDP}
 P43799199 HMS 0103 MARIAH 4488 ET {DLF,HYF,IEF,MSUDF,MDF}

CL 1 DOMINO 215Z {SOD}{CHB}{DLF,HYF,IEF,MSUDF,MDF}
 HH MISS ADVANCE 1072Y ET {DLF,HYF,IEF}
 CL 1 DOMINO 1161Y {DLF,HYF,IEF}
 CL 1 DOMINETTE 1123Y 1ET {DLF,HYF,IEF}

HH ADVANCE 1013Y ET {SOD}{DLF,HYF,IEF}
 HH MISS ADVANCE 0121X {DLF,HYF,IEF}
 NJW 73S W18 HOMETOWN 10Y ET {SOD}{CHB}{DLF,HYF,IEF,MSUDF,MDC}
 H W4 MARIAH 0103 ET {DLF,HYF,IEF,MSUDF,MDF}

| CE | BW | WW | YW | DMI | SC | SCF | MM | M&G | MCE |
|-----|------|------|-----|-------|------|------|-------|------|------|
| 3.8 | 3.4 | 64 | 105 | 0.3 | 1.0 | 20.2 | 26 | 58 | 1.2 |
| MCW | UDDR | TEAT | CW | FAT | REA | MARB | BMI\$ | BIIS | CHBS |
| 110 | 1.40 | 1.50 | 87 | 0.051 | 0.51 | 0.02 | 423 | 501 | 130 |

- Horned.
- A practical 7131 son, hes rugged big testiceled and built to last.



H MS 0103 MARIAH 4488 – MATERNAL GRANDAM OF LOT 17



CRR D03 VIOLET 445 ET – Maternal Grandam of Lot 18



LOT 18 – B ADVANCE PERFECTION 20076

18 | B ADVANCE PERFECTION 20076 {DLF,HYF,IEF,MSUDF,MDC}

P44370447 | Calved: 3/12/22 | Tattoo: BE 20076

H FHF ADVANCE 628 ET {CHB}{DLF,HYF,IEF,MSUDF,MDF,DBF}
H ADVANCE PERFECTION 9567 ET {DLF,HYF,IEF,MSUDF,MDC}
 P44023669 WLL ZOEY 3Z {DLF,HYF,IEF}



NJW 73S W18 HOMETOWN 10Y ET {SOD}{CHB}{DLF,HYF,IEF,MSUDF,MDC}
H VIOLET 522 ET {DOD}{MDP}
 P43583721 CRR D03 VIOLET 445 ET {DLF,HYF,IEF}

HH ADVANCE 4075B ET {DLF,HYF,IEF,MSUDF,MDF}
 FHF 408 RITA 21W {DLF,HYF,IEF,MSUDF,MDF}
 TH 122 711 VICTOR 719T {SOD}{DLF,HYF,IEF,MSUDF,MDF}
 WLL VENUS 19X {HYF}

SHF WONDER M326 W18 ET {SOD}{CHB}{DLF,HYF,IEF,MSUDF,MDC,DBF}
 NJW P606 72N DAYDREAM 73S {DLF,HYF,IEF,MSUDF,MDF}
 SHF INTERSTATE 20X D03 {SOD}{DLF,HYF,IEF,MSUDF,MDC}
 KJ 2410 VIOLET 392F

| CE | BW | WW | YW | DMI | SC | SCF | MM | M&G | MCE |
|-----|------|------|----|-------|------|------|-------|------|------|
| 7.9 | 1.9 | 53 | 90 | 0.3 | 0.6 | 17.2 | 30 | 56 | 1.7 |
| MCW | UDDR | TEAT | CW | FAT | REA | MARB | BMI\$ | BIIS | CHBS |
| 107 | 1.20 | 1.20 | 69 | 0.031 | 0.43 | 0.03 | 360 | 425 | 109 |

- Scurred.
- The Advance Perfection son reads with balance and is quick to catch your eye.
- Tremendous build and angles on a bull who has muscle shape and is big testicled.
- MDC.



H VIOLET 522 – DAM OF LOT 18



LOT 19 – B TYCOON 20109

19 | B TYCOON 20109 {DLF,HYF,IEF,MSUDF,MDF}

44370414 | Calved: 3/8/22 | Tattoo: BE 20109

H FHF ADVANCE 628 ET (CHB) (DLF,HYF,IEF,MSUDF,MDF,DFB)
K&B TYCOON 9606 ET (DLF,HYF,IEF,MSUDF,MDF)
 44072585 K&B BELLA 21921 ET (DOD) (DLF,HYF,IEF,MSUDF,MDF,DFB)



UPS DOMINO 3027 (SOD) (CHB) (DLF,HYF,IEF,MSUDF,MDF)
ABC MS 3027 44U DOMINETT 4009
 43538595 ABC MS 44U DOMINETT 2044 ET

HH ADVANCE 40758 ET (DLF,HYF,IEF,MSUDF,MDF)
 FHF 408 RITA 21W (DLF,HYF,IEF,MSUDF)
 K&B BANDIDO 8227U ET (CHB) (DLF,HYF,IEF)
 K&B SWEET SALLY 5037 (DLF,HYF,IEF)

CL 1 DOMINO 91261 IET (SOD) (DLF,IEF)
 UPS MISS DIAMOND 1353 (DLF,HYF,IEF,MSUDF)
 NJW 98S DURANGO 44U (SOD) (DLF,HYF,IEF)
 ABC MS 2218 DOM 5036 (DLF,HYF,IEF)

| CE | BW | WW | YW | DMI | SC | SCF | MM | M&G | MCE |
|-----|------|------|----|--------|------|------|-------|------|------|
| 2.1 | 2.0 | 56 | 71 | -0.1 | 0.7 | 20.2 | 23 | 51 | -0.1 |
| MCW | UDDR | TEAT | CW | FAT | REA | MARB | BMI\$ | BIIS | CHBS |
| 69 | 1.30 | 1.40 | 63 | -0.019 | 0.54 | 0.04 | 406 | 474 | 103 |

- Horned.
- A wide built Tycoon son who's powerful from every angle.
- Big topped, square hipped, bold ribbed.



LOT 20 – B TYCOON 20102

20 | B TYCOON 20102 {DLF,HYF,IEF,MSUDF,MDF}

44373228 | Calved: 4/21/22 | Tattoo: BE 20102

H FHF ADVANCE 628 ET (CHB) (DLF,HYF,IEF,MSUDF,MDF,DFB)
K&B TYCOON 9606 ET (DLF,HYF,IEF,MSUDF,MDF)
 44072585 K&B BELLA 21921 ET (DOD) (DLF,HYF,IEF,MSUDF,MDF,DFB)



GB LI DOMINO 177R (SOD) (CHB) (DLF,HYF,IEF)
HMS ADVANCE 6027
 43683403 HMS 5139 ADVANCE 4006 ET (DLF,HYF,IEF,MSUDF)

HH ADVANCE 40758 ET (DLF,HYF,IEF,MSUDF,MDF)
 FHF 408 RITA 21W (DLF,HYF,IEF,MSUDF)
 K&B BANDIDO 8227U ET (CHB) (DLF,HYF,IEF)
 K&B SWEET SALLY 5037 (DLF,HYF,IEF)

GB LI DOMINO 8143M (DLF,HYF,IEF)
 GB LI DOM PRCS 690K (DLF,HYF,IEF)
 NJW 98S RI17 RIBEYE 88X ET (SOD) (DLF,HYF,IEF,MSUDF,MDF,DFB)
 HH MISS ADVANCE 5139R ET (DLF,HYF,IEF)

| CE | BW | WW | YW | DMI | SC | SCF | MM | M&G | MCE |
|-----|------|------|----|-------|------|------|-------|------|------|
| 2.9 | 3.2 | 58 | 84 | 0.2 | 1.3 | 14.3 | 21 | 50 | -2.0 |
| MCW | UDDR | TEAT | CW | FAT | REA | MARB | BMI\$ | BIIS | CHBS |
| 80 | 1.40 | 1.50 | 70 | 0.041 | 0.72 | 0.13 | 325 | 399 | 114 |

- Horned.
- A really long, attractive bull who's ideal in his structure.
- Backed by a great cow family and is top 10% UDDR and TEAT.



Yearling Heifers

The yearling heifers are a good representation of our replacements.
They are backed by the heart of our cow herd and will work in many different scenarios.

Pedigrees and Data on the heifers will be available prior to the sale.

21 | THREE (3) REGISTERED OPEN ANGUS HEIFERS

22 | THREE (3) REGISTERED OPEN HEREFORD HEIFERS

23 | FOUR (4) REGISTERED OPEN ANGUS HEIFERS

24 | FOUR (4) REGISTERED OPEN HEREFORD HEIFERS



Understanding Hereford EPDs

The American Hereford Association (AHA) currently produces expected progeny differences (EPDs) for 17 traits and calculates three profit indexes. AHA's genetic evaluation makes use of a Marker Effects Model that allows the calculation of EPDs by incorporating the pedigree, phenotypic and genomic profile of an animal. Animals that have a genomic profile will be denoted with a GE-EPD logo.

The current suite of Hereford EPDs and profit indexes includes:

Calving Ease — Direct (CE)

CE EPD is based on calving ease scores and birth weights and is measured on a percentage. CE EPD indicates the influence of the sire on calving ease in females calving at 2 years of age. For example, if sire A has a CE EPD of 6 and sire B has a CE EPD of -2, then you would expect on average, if comparably mated, sire A's calves would have an 8 percent more likely chance of unassisted calving when compared to sire B's calves.

Birth Weight (BW)

BW EPD is an indicator trait for calving ease and is measured in pounds. For example, if sire A has a BW EPD of 3.6 and sire B has a BW EPD of 0.6, then you would expect on average, if comparably mated, sire A's calves would come 3 lb. heavier at birth when compared to sire B's calves. Larger BW EPDs usually, but not always, indicate more calving difficulty. The figure in parentheses found after each EPD is an accuracy value or reliability of the EPD.

Weaning Weight (WW)

WW EPD is an estimate of pre-weaning growth that is measured in pounds. For example, if sire A has a WW EPD of 60 and sire B has a WW EPD of 40, then you would expect on average if comparably mated, sire A's calves would weigh 20 lb. heavier at weaning when compared to sire B's calves.

Yearling Weight (YW)

YW EPD is an estimate of post-weaning growth that is measured in pounds. For example, if sire A has a YW EPD of 100 and sire B has a YW EPD of 70, then you would expect on average if comparably mated, sire A's calves would weigh 30 lb. heavier at a year of age when compared to sire B's calves.

Dry Matter Intake (DMI)

The DMI EPD predicts the daily consumption of pounds of feed. For example, if sire A has a DMI EPD of 1.1 and sire B has a DMI EPD of 0.1, you would expect sire B's progeny, if comparably mated, to consume on average 1 pound of feed less per day.

Scrotal Circumference (SC)

Measured in centimeters and adjusted to 365 days of age, SC EPD is the best estimate of fertility. It is related to the bull's own semen quantity and quality, and is also associated with age at puberty of sons and daughters. Larger SC EPDs suggest younger age at puberty. Yearling sons of a sire with a 0.7 SC EPD should have yearling scrotal circumference measurements that average 0.7 centimeters (cm) larger than progeny by a bull with an EPD of 0.0 cm.

Sustained Cow Fertility

The AHA's new SCF EPD is a prediction of a cow's ability to continue to calve from three years of age through 12 years of age, given she calved as a two-year-old. The EPD is expressed as a deviation in the proportion of the 10 possible calvings to 12 years old expressed as a probability. For example, the daughters of a bull with a 30 EPD would have the genetic potential to have one more calf by age 12 than the daughters from a bull with a 20 EPD. In other words, the daughters from the 30 EPD bull would have a 10% greater probability of having one more calf than the bull with a 20 EPD. This is equivalent to saying that the daughters are 10% more likely to remain in the herd to age 12.

Maternal Milk (MM)

The MM EPD of a sire's daughters is expressed in pounds of calf weaned. It predicts the difference in average weaning weights of sires' daughters' progeny due to milking ability. Daughters of the sire with a +14 MM EPD should produce progeny with 205-day weights averaging 24 lb. more (as a result of greater milk production) than daughters of a bull with a MM EPD of -10 lb. (14 minus -10.0 = 24 lb.). This difference in weaning weight is due to total milk production during the entire lactation.

Maternal Milk & Growth (M&G)

The M&G EPD reflects what the sire is expected to transmit to his daughters for a combination of growth genetics through weaning and genetics for milking ability. It is an estimate of the daughter's progeny weaning weight. A bull with a 29 lb. M&G EPD should sire daughters with progeny weaning weights averaging 19 lb. heavier than progeny of a bull's daughters with a M&G EPD of 10 lb. (29 minus 10 = 19 lb.). It is equal to one-half the sire's weaning weight EPD, plus all of his MM EPD. No accuracy is associated with this since it is simply a mathematical combination of two other EPDs. It is sometimes referred to as "total maternal" or "combined maternal."

Maternal Calving Ease (MCE)

MCE EPD predicts how easily a sire's daughters will calve at two years of age and is measured on a percentage. For example, if sire A has a MCE EPD of 7 and sire B has a CE EPD of -3, then you would expect on average if comparably mated, sire A's daughters would calve with a 10% more likely chance of being unassisted when compared to sire B's daughters.

Mature Cow Weight (MCW)

The MCW EPD was designed to help breeders select sires that will either increase or decrease mature size of cows in the herd. The trait was developed after years of cow weight data collection and the EPD relates directly to the maintenance requirements of a cow herd. For example, if sire A has a MCW EPD of 100 and sire B has an EPD of 85, then you would expect the females of sire A, if comparably mated, to be 15 lb. heavier at mature size.

Udder suspension (UDDR)

UDDR EPDs are reported on a 9 (very tight) to 1 (very pendulous) scoring scale. Differences in sire EPDs predict the difference expected in the sires' daughters' udder characteristics when managed in the same environment.

For example, if sire A has a UDDR EPD of 0.4, and sire B has a UDDR EPD of -0.1, the difference in the values is 0.5, or one-half of a score. If daughters of sires A and B are raised and managed in the same environment, you would expect half a score better udder suspension in daughters of sire A, compared to sire B.

Teat size (TEAT)

TEAT EPDs are reported on a 9 (very small) to 1 (very large, balloon shaped) scoring scale. Differences in sire EPDs predict the difference expected in the sires' daughters' udder characteristics when managed in the same environment.

For example, if sire A has a teat size EPD of 0.4, and sire B has a teat size EPD of -0.1, the difference in the values is 0.5, or one-half of a score. If daughters of sires A and B are raised and managed in the same environment, you would expect half a score smaller teat size in daughters of sire A, compared to sire B.

Carcass Weight (CW)

CW EPD is a beneficial trait when considering the impact that pounds have relative to end product value. At the same age constant endpoint, sires with higher values for carcass weight will add more pounds of hot carcass weight compared to sires with lower values for carcass weight. For example, if sire A has a CW EPD of 84 and sire B has a CW EPD 64, then you would expect the progeny of sire A, if harvested at the same age constant endpoint, to have a 20-lb. advantage in terms of hot carcass weight.

Rib Fat (FAT)

The FAT EPD reflects differences in adjusted 365-day, 12th-rib fat thickness based on carcass measurements of harvested cattle. Sires with low, or negative FAT EPDs, are expected to produce leaner progeny than sires with higher EPDs. Ultrasound measures are also incorporated into this trait and have been shown to be highly correlated with the performance of slaughter progeny. All data is expressed on a carcass scale.

Ribeye Area (REA)

REA EPDs reflect differences in an adjusted 365-day ribeye area measurement based on carcass measurements of harvested cattle. Sires with relatively higher REA EPDs are expected to produce better-muscled and higher percentage yielding slaughter progeny than will sires with lower REA EPDs. Ultrasound measurements are also incorporated into this trait and have been shown to be highly correlated with the performance of slaughter progeny. All data is expressed on a carcass scale.

Marbling (MARB)

MARB EPDs reflect differences in an adjusted 365-day marbling score (intramuscular fat, [IMF]) based on carcass measurements of harvested cattle. Breeding cattle with higher MARB EPDs should produce slaughter progeny with a higher degree of IMF and therefore higher quality grades. Ultrasound measurements are also incorporated into this trait and have been shown to be highly correlated with the performance of slaughter progeny. All data is expressed on a carcass scale.

Baldy Maternal Index (BMIS)

The BMIS is a maternally focused index that is based on a production system that uses Hereford x Angus cross cows. Progeny of these cows are directed towards Certified Hereford Beef. This index has significant weight on Sustained Cow Fertility, which predicts fertility and longevity of females. There is a slightly positive weight on Weaning Weight, Mature Cow Weight and Milk which accounts for enough growth but ensures females do not increase inputs. There is some negative emphasis on Dry Matter Intake, but a positive weighting on Carcass Weight which is anticipated to provide profitability from finishing of non-replacement females and castrated males. Marbling and Rib-eye Area are also positively weighted to keep the harvested progeny successful for CHB. This index is geared to identify Hereford bulls that will be profitable when used in a rotational cross with mature commercial Angus cows.

Brahman Influence Index (BIIS)

The BIIS is a maternally focused index that is based on a production system that uses Brahman x Hereford cross cows. Progeny of these cows are directed towards a commodity beef market since Certified Hereford Beef® does not accept Brahman influenced cattle. This index has significant weight on Sustained Cow Fertility, which predicts fertility and longevity of females. There is a slightly positive weight on Weaning Weight, Mature Cow Weight and Milk which accounts for enough growth but ensures females do not increase inputs. There is some negative emphasis on Dry Matter Intake, but a positive weighting on Carcass Weight which is anticipated to provide profitability in finishing non-replacement females and castrated males. Marbling and Rib-eye Area are also positively weighted to keep harvested progeny successful for a variety of commodity based programs. This index targets producers that use Hereford bulls on Brahman influenced cows.

Certified Hereford Beef Index (CHBS) The Certified Hereford Beef Index (CHBS) is a terminal sire index that is built on a production system where Hereford bulls are mated to mature commercial Angus cows where all progeny will be targeted for Certified Hereford Beef after the finishing phase. This index has significant weight on Carcass Weight and Marbling to ensure profit on the rail. As well there is a positive weighting for Average Daily Gain along with a negative weighting on Dry Matter Intake to ensure efficient pounds of growth in the finishing phase. In addition, there is a positive weighting for Rib-eye Area and a negative weighting for Back Fat to maintain desirable Yield Grades. This is the only index that has no emphasis on fertility. Remember that no replacement heifers are being retained.

Take advantage of hybrid vigor by capitalizing on Hereford genetics.



The Maternal Advantage program generates females with added longevity, more docility, increased fertility and more profit per year.

Can be utilized by producers using Hereford bulls on British-based cows or Brahman-based cows in their breeding program.

Producers utilizing the program will have access to a sire EPD summary, added market exposure, replacement selection tools, genetic improvement tools and access to AHA resources, marketing and staff.

Visit Hereford.org to learn more and enroll.

Qualifications

- Producers must verify that eligible females are sired by registered Hereford bulls with transferred ownership.
- Participating bull batteries must rank in the top 50% of the breed for Baldy Maternal Index (BMI\$) if used on British-based cows or the top 50% of the breed for Brahman Influence Index (BII\$) if used on Brahman-based cows.



BRADSHAW RANCH
12180 272nd St
LaBelle, MO 63447

B/R BRADSHAW RANCH
Bull Sale

March 27, 2024 | 5:30 p.m. (CST)

Keosauqua Sales Co. Inc. ♦ 20555 Hwy. 1 ♦ Keosauqua, IA 52565

LiveAuctions.TV

