

# *Bar Star* **CATTLE**

## **2024 BULL SALE**

March 21, 2024 | 1:00 PM (MT)  
At the Ranch – Musselshell, Montana

*with Special Guest*



*BarStarCattle.com*

60 Registered Hereford Bulls – Yearling & 18 Month Old

35 F1 Black Baldy Open Replacement Females





# 2024 BULL SALE

**March 21, 2024 | 1:00 PM (MT)**  
**At the Ranch | Musselshell, Montana**

**60 Registered Hereford Bulls – Yearling and 18-Month Old**  
**35 F1 Black Baldy Open Replacement Females**

## *Sale Schedule*

Wednesday, March 20th  
12:00 p.m. (MT) – Bulls on Display

Thursday, March 21st  
8:00 AM (MT) – Bulls on Display  
11:30 AM – Lunch Served  
1:00 PM – Bull Sale Starts  
Post-Sale Social Immediately Following

## *Online Bidding*

Watch and Bid Online  
**DVAuction.com**



## *Videos*

Videos will be available after Feb. 20th  
on [BarStarCattle.com](http://BarStarCattle.com), [ErnstHerefords.com](http://ErnstHerefords.com)  
or [DVAuction.com](http://DVAuction.com)



### **Chad and Stephanie Murnin**

Hennessy and Harrison  
290 Jensen Road, Musselshell, MT 59059  
406-399-7811 | [barstarcattle@hotmail.com](mailto:barstarcattle@hotmail.com)



### **Marshall and Barbara Ernst**

Kevin and Courtney Ernst  
14179 CR 70, Greeley, CO 80631  
970-381-6316 | [marshall\\_ernst@msn.com](mailto:marshall_ernst@msn.com)

We have led our catalog with this for several years now and since it's still the most pertinent thing you can read about our operation so we will re-ride it again, with some additions. Quite a few years ago, I was visiting about cattle breeding philosophies with a cattleman and a breeder that I respect. He asked me what our breeding philosophy/program was. I was taken back a bit as I'd never outlined it before. I had goals and objectives in my mind but never really relayed them to our customers or anyone for that matter. After explaining what we do, and the type we breed for, the before mentioned breeder said never falter from it no matter what and that one little detour can derail decades of hard work. The drought of 2021 validated what we have been trying to accomplish and achieve by our cows working for us. The past two winters our cows have survived during the winter on almost solely a straw ration with an added 5 lb. of "cheap" protein. Without that breeding program in mind and selecting for the genetics we felt could survive anywhere under any circumstance and sticking to that ideology we wouldn't be here to relay this message this year.

### **Our Program:**

1. The brand is the validation of one's reputation. We are honored to carry the heritage of Chad's late grandfather with his brand on not only our cattle, but our program. In order to wear the Bar Star as an intact male bull, they must meet the criteria set forth. We castrate aggressively and only keep those as breeders that we would use in our herd as well. Chad's grandfather also was a horse enthusiast and more than once he said a good stud makes a great gelding. We keep that in mind when we make the first cuts on weaning day in the bull group and continue his cowboy way of life today to our best of our abilities.
2. Never chase trends. Phenotype will always be our number one priority because with the right type of cattle all else can be obtained. A good bull starts at the ground where feet and leg structure are critical to longevity which is linked to profitability. (Hoof trimming will NEVER be a part of our management practices. We trim with a livestock trailer.) Bulls must look like bulls. Masculine bulls produce feminine females. Sheath size and angle and testicle shape and size are critical. Body depth is linked to ease of flesh. We want cattle that convert feed to condition. Square made muscular cattle will never fall out of fashion. We are producing meat animals, so big backs and big hips will always be selected for. Mature cattle weight should be managed, but just as importantly, mature cattle height should be moderate. There are a lot of big inefficient cattle in the industry, we certainly don't need more.
3. Pounds are dollars. Revenue is generated only a few times a year in the cattle business. The more pounds you have to sell the bigger the payday. Rapid growth to a plateau of acceptable size is the main objective. EPDs are a tool. Use them as such. Make sure you have the right tools for the job, but never ever select a single trait select. We have parameters that our herd bulls must reside within.
4. Good genetics are bred in, not fed in. We study pedigrees and mating decisions and frequently linebreed. This improves the consistency of our cattle and creates more genetic explosion for our customers. A best practice for bull buyers is to find cattle that are managed similarly. Pampered cattle have no place in the Bull Mountains of Montana. Come visit us and see the hills the cattle hike. These bulls know how to walk long distances to water and thrive on limited precip.
5. Maternal traits are critical. Calving ease, vigor at birth, udder and teat quality are all important, but can quickly be outweighed by a mother with no bred in brainpower to care for her calf. Maternal efficiency goes even further beyond this and many have forgotten about some of the most important traits in the cattle business. Efficiency, longevity, fertility. We have three separate herds here. The baldy herd, the Angus herd aka the baldy factory and the pedigreed Hereford herd. We consistently see our baldy cows eating as much as 20% less feed than the blacks, all while having a body condition score advantage and a considerably higher retention rate. Traits that aren't measured but drastically impact the bottom line, especially in today's problems with drought and high feed and input costs.
6. Don't forget about carcass traits. If you can have it all, why not pass on a good product to the consumer. Remember black cows have a lot of marbling bred in... as do Holsteins. We strive to make the type of cattle that break the mold and have both muscle and IMF all the while having the efficient phenotype to live in a tough environment.

*Thank you to all our current and future customers.  
We stand behind our product and are proud to offer  
this set of consistently bred highly functional bulls for  
sale. If you need any help marketing your cattle please  
reach out to us. We consistently have high demand for  
Bar Star genetics.*

— CM





## Sale Day Location

Bar Star Cattle Ranch  
290 Jensen Road  
Musselshell, MT 59059  
See page 35 for map and accommodations

## Sale Day Contacts

Chad Murnin ..... 406-399-7811  
Stephanie Murnin ..... 406-399-7815  
Marshall Ernst ..... 970-381-6316  
Kevin Ernst ..... 970-218-7140

### **Sale Day/F1 Females**

Bert Murnin ..... 406-853-4019

## Auctioneer

Greg Goggins ..... 406-200-1880

## Industry Representatives

Kevin Murnin, American Hereford Assn. .... 406-853-4638  
Matt Wznick, Western Ag Reporter ..... 406-489-2414  
Devin Murnin, Western Livestock Journal ..... 406-696-1502

## Lodging

Northern Hotel, Billings, MT – Agriculture rate ..... 406-867-6767  
Boothill Inn & Suites ..... 406-245-2000  
DoubleTree by Hilton Hotel, Billings, MT ..... 406-252-7400

## Online Bidding

Online bidding will be available via [DVAuctions.com](http://DVAuctions.com)

We encourage you to register 24 hours prior to the sale to make sure approval has been completed. Questions call 402-316-5460.



## Phone Bidding

If you prefer to bid over the phone or leave an absentee bid, please contact Chad or any of the sale staff ahead of time so that one of the sellers, representatives of the sellers, or industry representatives can meet your needs.

## Bull Viewing Before Sale

We encourage you to come look at our bulls on or before sale day, located at the ranch and you are invited to view the cow families prior to the sale day in Musselshell, MT. Ernst bulls reside at the ranch for the last month of development as well. Videos of the bulls are available on our websites and [DVAuction.com](http://DVAuction.com)

## Bar Star/Ernst Breeding Guarantee

All animals in the sale are guaranteed breeders. All bulls will be covered with a first breeding season guarantee for reproductive injury. Breeding season is defined as the first 60 days following the first turnout of bulls. 50% of the value of a bull that encounters reproductive injury (sheath and testicles) will be given as a credit towards a future purchase or towards a replacement bull if one is available. Any injury must be diagnosed by a seller approved veterinarian. Please notify us as soon as possible should this occur, and prior to the injured bull being sold for salvage. All claims must be made by September 1, 2024. This is not an insurance policy, nor does it cover mismanagement, neglect, or death.

## Delivery

Bulls will be available for pickup at the sale. If you so chose, a \$100 per buyer discount will be given to pick up your purchase on sale day. Delivery is free for bulls sold in Montana and designated areas of Wyoming and Colorado. Delivery to other locations will be made upon request. We will do our best to get you your bulls at a reasonable price and will try to cover a portion of the delivery costs outside of those states.

## Volume Discount

We do offer a volume discount. 2 bulls will receive a 2% discount, 3 bulls will receive a 3% discount on up. 5 bulls will receive a 5% discount. The max discount is 5%.

## Bar Star/Ernst Semen & Genetic Retention

We are very excited about the bulls in our program offering, therefore we reserve the right to retain a one third semen interest and/or in-herd semen use on any bulls we offer for sale. Several bulls in the sale will have a higher interest kept and announcements from the auction block take precedence. Collection will be done at the buyer's convenience and sellers expense.

## Terms of Sale

Each animal will be sold to the highest bidder and becomes the responsibility of the purchaser as soon as sold. The auctioneer will settle any disputes from the auction block. The cattle sell under the standard terms and conditions as recommended by the American Hereford Association.

## Insurance

Insurance will be available sale day. Any bulls left for semen collection or an extended delivery, must be insured or a waiver of liability signed on sale day.

## Bull Care

Bulls are developed at the ranch on Hubbard feed bull development pellet, and dry matter is straw/long stem grass hay and bunk fed to help improve docility. Bulls are grown until delivery at no cost to the buyer. We follow a vaccination protocol developed specifically for our program based on our veterinarian and our Zoetis representative's recommendations. Bulls have to pass a breeding soundness exam before delivery.

## Heifer Safe



Certain bulls in this listing are marked as safe for use on heifers. This symbol represents the bulls' data to be heifer safe.



**Bar Star**  
**CATTLE**





— Lot 1 —



## BAR STAR PRINCIPAL 3044 ET

DOB: 3/3/23 REG: 44491400 YEARLING

LE% PIGMENT: 60 RE% PIGMENT: 70

BR BELLE AIR 6011

**BAR STAR FRESH PRINCE 018 ET**

BAR STAR 91X WHATAGIRL 410

RST TIMES A WASTIN 0124

**NJW 7171 0124 BETH 2B**

GRANDVIEW LADY PATRIOT 7171 ET



CED	BW	WW	YW	DMI	SC	SCF	MILK	MG	CEM
-2.6	3.7	72	119	0.4	1.8	12.8	31	67	1.5
MCW	US	TS	CW	FAT	REA	MARB	BMI	BII	CHB
129	1.20	1.10	82	0.001	0.59	0.21	333	424	148

## HORNED

Pounds are still dollars in the beef industry. If you are serious about creating fast growing efficient cattle that are good looking then this red-necked and freckle-faced bull should stop you in your tracks. Not only is he the heaviest weight per day of age bull ever here in the spring born herd but he was also the heaviest WDA. bull in the entire open show at Denver in his age division recording the heaviest actual weight on show day as well at 1,244 lbs. at just ten months of age. This freckle faced powerhouse has been special from day 1. Combine his big time herd bull phenotype with and epd profile in the top 3% WW, top 2% YW, top 2% SC, and in the top 25% in all carcass traits to tabulate a top 10% CHB; this makes him one of the best ever created here at the Bar Star. Maternal brother to last year's lot 1. Two full brothers sell as lots 2 and 3.



— Bar Star Fresh Prince 018 ET, Sire —



— Lot 2 —

## BAR STAR SUBSTANTIAL 2251 ET

DOB: 9/17/22 REG: P44529514 18-MONTH OLD

LE% PIGMENT: RE% PIGMENT:

BR BELLE AIR 6011  
BAR STAR FRESH PRINCE 018 ET  
BAR STAR 91X WHATAGIRL 410

E 4L SCHATZEE ET Z712  
NJW 7171 0124 BETH 2B  
ANCHOR 3Y

CED	BW	WW	YW	DMI	SC	SCF	MILK	MG	CEM
-6.5	5.2	73	121	0.3	2.1	14.2	30	66	1.3
MCW	US	TS	CW	FAT	REA	MARB	BMI	BII	CHB
136	1.10	1.10	82	0.001	0.65	0.22	357	450	150

## HOMOZYGOUS POLLED

Homozygous polled powerhouse! We think this bull can make a SUBSTANTIAL impact wherever he goes. The phenotype the industry demands that's incredibly hard to produce. Wildly red marked up onto his face. Huge bodied, massive muscled, big feet and bone, all in a flexible package. Between the stable flies and the tail mites this summer they took his tail switch off. Look past that and you will find one that's absolutely incredible. Great disposition. The wide chest that 2B is known to throw. Fresh Prince's skeleton and structural integrity. Stacked up pedigree. Substantial genomics winner in growth moving to elite weaning weight, yearling weight, and top 1% SC, we will agree with all of that along with his top tier carcass and \$CHB. We still don't know how he moved from positive CED and a 2.3 BW, but some things are left unknown in this world. What is known is that it's tough to make them this good phenotype.



— Lot 3 —

## BAR STAR BELLE AIR 3075 ET

DOB: 3/9/23 REG: P44510715 YEARLING

LE% PIGMENT: RE% PIGMENT:

BAR S LHF 028 240  
BR BELLE AIR 6011  
BR BELLE 4082 ET

STAR STROKE OGENIUS 91X ET  
BAR STAR 91X WHATAGIRL 410  
MOHICAN WHATAGIRL 6Y

## POLLED

The last ever of the Belle Air x 410 mating. It's produced so many great cattle here. 8 full brothers are working in registered operations across the US. This one is an outlier compared to many of the brothers. He charts wild growth epd's all while having a top 25% milk and strong teat and udder figures. Carcass wise he's through the roof being top 15% REA and top 10% marbling. This tabulates to a whopping \$171 CHB which is top 2%. Visually he's as big hipped and massive as we can make while having a huge shapely back. Commercial bull buyers be ready to charge Member of our NWSS division champion pen of bulls.

CED	BW	WW	YW	DMI	SC	SCF	MILK	MG	CEM
-4.7	5.7	68	114	0.1	2.2	12.5	31	65	-2.1
MCW	US	TS	CW	FAT	REA	MARB	BMI	BII	CHB
123	1.30	1.40	85	0.001	0.66	0.32	345	438	169





— Lot 4 —

## BAR STAR GENRE 3057 ET

DOB: 3/5/23 REG: P44508088 YEARLING  
LE% PIGMENT: RE% PIGMENT:

NJW 79Z Z311 ENDURE 173D ET  
LOEWEN GENESIS G16 ET  
LOEWEN 7748 MISS 344N 4RB42ET

RST TIMES A WASTIN 0124  
NJW 7171 0124 BETH 2B {CHB} {DLF,HYF,IEF,MSUDF,MDF}  
GRANDVIEW LADY PATRIOT 7171 ET

CED	BW	WW	YW	DMI	SC	SCF	MILK	MG	CEM
1.5	4.0	69	110	0.6	1.2	16.6	23	57	3.4
MCW	US	TS	CW	FAT	REA	MARB	BMI	BII	CHB
132	1.20	1.10	99	0.031	0.62	0.19	392	483	157

## HOMOZYGOUS POLLED

Homozygous polled with the makings and markings of a herd bull. The first of the full brothers to Nemeses. This is one attractive, moderate framed, great structured and pigmented individual with herd bull muscle. He's got so many great pieces the breed and industry needs. Top 10% in his growth traits, with carcass strength combine to tabulate a top 5% \$CHB all well having a solid \$BMI. Member of our calf champion pen at the NWSS 2024. Full brothers to lots 5-7. Maternal brothers sell as lots 1 and 2.



— Lot 5 —

## BAR STAR GENERATE 3061 ET

DOB: 3/5/23 REG: P44508086 YEARLING  
LE% PIGMENT: RE% PIGMENT:

NJW 79Z Z311 ENDURE 173D ET  
LOEWEN GENESIS G16 ET  
LOEWEN 7748 MISS 344N 4RB42ET

RST TIMES A WASTIN 0124  
NJW 7171 0124 BETH 2B {CHB} {DLF,HYF,IEF,MSUDF,MDF}  
GRANDVIEW LADY PATRIOT 7171 ET

CED	BW	WW	YW	DMI	SC	SCF	MILK	MG	CEM
3.8	2.3	67	110	0.6	1.4	20.2	34	67	8.7
MCW	US	TS	CW	FAT	REA	MARB	BMI	BII	CHB
108	1.30	1.20	82	0.041	0.55	0.40	438	543	156

## POLLED

Stephanie describes this one as "good cattle no matter how you look at him." He's huge bodied, with great muscle shape and pattern, solid bone, and goggle eyes with an epd profile that sets himself apart from his brothers. We would feel confident using him on heifers even though his epd's say he's right on the line. Take that lower-than-average bw and spread it to top 10% growth traits and elite carcass genetics being in the top 5% of the breed for marbling and \$CHB with a top 15% \$BMI. To say its hard to make them like this one isn't an understatement. This one will GENERATE great-looking and profitable cattle that can do it all both on the rail and in the pasture. Small scurs. Full brothers to lots 4,6-7. Maternal brothers sell as lots 1 and 2.



— Lot 6 —

## BAR STAR GENEROUS 3063

DOB: 3/6/23

REG: P44508091

YEARLING

LE% PIGMENT:

RE% PIGMENT:

NJW 79Z Z311 ENDURE 173D ET

LOEWEN GENESIS G16 ET

LOEWEN 7748 MISS 344N 4RB42ET

RST TIMES A WASTIN 0124

NJW 7171 0124 BETH 2B

GRANDVIEW LADY PATRIOT 7171 ET

## HOMOZYGOUS POLLED

Homozygous polled big bellied, and easy fleshing describe this one. He's so deep in his flank. This one could make those baldie females that stay fat on an air diet. Big time numbers in a moderate, deep, dark red package. Full brothers to lots 4,5,& 7. Maternal brothers sell as lots 1 and 2.

CED	BW	WW	YW	DMI	SC	SCF	MILK	MG	CEM
-0.8	4.6	73	125	0.6	2.3	14.3	26	62	4.9
MCW	US	TS	CW	FAT	REA	MARB	BMI	BII	CHB
137	1.30	1.30	98	0.031	0.62	0.19	362	455	162



— Lot 7 —

## BAR STAR GENESIS 3069 ET

DOB: 3/7/23

REG: P44510461

YEARLING

LE% PIGMENT: GOGGLE

RE% PIGMENT: GOGGLE

NJW 79Z Z311 ENDURE 173D ET

LOEWEN GENESIS G16 ET

LOEWEN 7748 MISS 344N 4RB42ET

RST TIMES A WASTIN 0124

NJW 7171 0124 BETH 2B

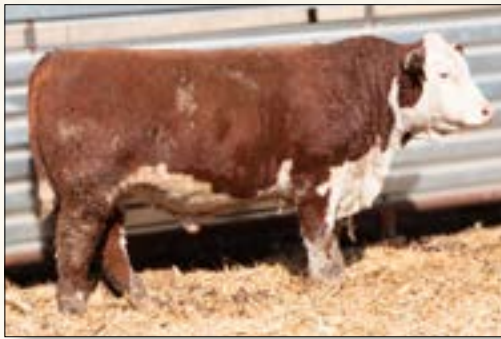
GRANDVIEW LADY PATRIOT 7171 ET

## HOMOZYGOUS POLLED

This one is as wide as the alleyway and is stretchy and rugged. This one's calves will absolutely crush the scale. He's designed to make a black cow wean a big calf and add a lot of what the average black cow needs in terms of bone and muscle, both of which equal pay weight. It's difficult to build this kind of EPDs; top 2% growth, with huge carcass numbers to push into that elite top 1% SCHB, all while maintaining a huge \$418 BMI. It's all in there. Full brothers to lots 4-6, Maternal brothers sell as lots 1 and 2.

CED	BW	WW	YW	DMI	SC	SCF	MILK	MG	CEM
-1.6	4.8	75	129	0.6	1.3	17.3	31	68	2.0
MCW	US	TS	CW	FAT	REA	MARB	BMI	BII	CHB
128	130	1.20	100	0.061	0.81	0.32	418	523	176





— Lot 8 —

### BAR STAR 304 FRESH PRINCE 2242

8

DOB: 9/5/22 REG: P44529533 18-MONTH OLD  
LE% PIGMENT: GOGGLE RE% PIGMENT: 0

BR BELLE AIR 6011  
BAR STAR FRESH PRINCE 018 ET  
BAR STAR 91X WHATAGIRL 410

KT BUILT TUFF 1010  
BAR STAR 1010 MS BLTSTACKD 304  
ERNST MS SWEET STACK 608

CED	BW	WW	YW	DMI	SC	SCF	MILK	MG	CEM
5.7	0.8	55	83	0.1	1.6	18.9	26	53	1.3
MCW	US	TS	CW	FAT	REA	MARB	BMI	BII	CHB
70	1.20	1.20	60	0.011	0.18	0.27	383	468	118

#### POLLED

This cow family is very fertile. Here's a moderate, masculine, massive bull, big in marbling, and a huge \$BMI. His actual 88 lb. birthweight says that we will leave it up to you to decide if EPDs are more important than actual and if he's okay on bigger heifers.



— Lot 9 —

### BAR STAR 929 FRESH PRINCE 3036

9

DOB: 3/1/23 REG: P44529844 YEARLING  
LE% PIGMENT: GOGGLE RE% PIGMENT: GOGGLE

BR BELLE AIR 6011  
BAR STAR FRESH PRINCE 018 ET  
BAR STAR 91X WHATAGIRL 410

BPF HAPPY HOUR 525B ET  
BAR STAR MS 525B JEWEL 929  
MC P316 JEWEL W9118 ET

CED	BW	WW	YW	DMI	SC	SCF	MILK	MG	CEM
1.2	2.2	61	103	0.4	1.9	18.3	28	59	-3.6
MCW	US	TS	CW	FAT	REA	MARB	BMI	BII	CHB
90	1.30	1.30	62	0.001	0.32	0.11	370	449	108

#### POLLED

This one is big, long bodied, and stout made. He's got big eye pigment and a lot of stretch. Great bone which should complement a lot of black cows well. If your cattle are too fast and you want to gentle them down, check this one out, he's got a great disposition and a big \$BMI.



10

### BAR STAR PRINCE 3043

DOB: 3/3/23 REG: P44510438 YEARLING  
LE% PIGMENT: 0 RE% PIGMENT: 100

BR BELLE AIR 6011  
BAR STAR FRESH PRINCE 018 ET  
BAR STAR 91X WHATAGIRL 410

HARVIE SMOKE STACK ET 195B  
BAR STAR MS 195B JEWEL 964  
BAR STAR W9118 4R JEWEL 601

CED	BW	WW	YW	DMI	SC	SCF	MILK	MG	CEM
7.8	1.0	62	94	0.4	1.9	16.4	29	60	1.3
MCW	US	TS	CW	FAT	REA	MARB	BMI	BII	CHB
78	1.50	1.40	77	0.101	0.64	0.40	371	469	143

#### HETERO POLLED

Easy calving and carcass combo here. Shape is so important and he's made like a wedge from behind. The Fresh Prince on a Smoke Stack daughter works well here and usually results just like this with a great BMI and CHB index combo.



— Lot 11 —

### ERNST FRESH PRINCE 343

DOB: 3/3/23 REG: P44458357 YEARLING  
LE% PIGMENT: 0 RE% PIGMENT: 0

BR BELLE AIR 6011  
BAR STAR FRESH PRINCE 018 ET  
BAR STAR 91X WHATAGIRL 410

UPS SENSATION 2296 ET  
WORR SPILLED PERFUME 236 ET  
WORR REMETEE 213C ET

CED	BW	WW	YW	DMI	SC	SCF	MILK	MG	CEM
6.4	0.3	58	89	0.2	1.7	19.4	35	65	2.6
MCW	US	TS	CW	FAT	REA	MARB	BMI	BII	CHB
80	1.30	1.30	76	0.051	0.59	0.14	408	486	125

#### POLLED/SCURRED

A moderate framed heifer safe bull, backed by a great dam. He has a good hip and leg structure, along with being well muscled. His BW EPD is in the upper 9% of the breed.



— Lot 12 —



— Lot 13 —



— Lot 14 —

12

## BAR STAR 514 REBELLION 3094

DOB: 3/22/23

REG: P44510441

YEARLING

LE% PIGMENT: 30

RE% PIGMENT: 100

BR BELLE AIR 6011

BAR STAR REBELLION 013 ET

BAR STAR 91X WHATAGIRL 410

NJW 73S W18 HOMETOWN 10Y ET

BAR STAR MS 10Y PROSPECTOR 514

RST MS K085 PROSPECTOR 4026



CED	BW	WW	YW	DMI	SC	SCF	MILK	MG	CEM
-3.2	4.2	60	105	0.3	2.2	19.5	28	58	-3.6
MCW	US	TS	CW	FAT	REA	MARB	BMI	BII	CHB
118	1.20	1.20	79	0.041	0.53	0.19	418	502	137

### HOMOZYGOUS POLLED

Cow bull with all the bells and whistles. Here's a super good looking younger bull that has a lot of muscle. His profitability indexes are through the roof too. Great feet, big testicles, and body. His dam weans a big calf every year.

13

## BAR STAR 12E REBELLION 3103

DOB: 3/27/23

REG: P44529589

YEARLING

LE% PIGMENT: GOGGLE

RE% PIGMENT: GOGGLE

BR BELLE AIR 6011

BAR STAR REBELLION 013 ET

BAR STAR 91X WHATAGIRL 410

NJW 12A 1010 TUFF 168C

NJW 5C 168C FAITH 12E

NJW 165A 38W FAITH 5C



CED	BW	WW	YW	DMI	SC	SCF	MILK	MG	CEM
-2.5	4.1	57	86	0.1	1.3	21.9	22	50	-3.4
MCW	US	TS	CW	FAT	REA	MARB	BMI	BII	CHB
70	1.40	1.40	56	0.011	0.33	0.10	416	493	97

### HETERO POLLED

This red-eyed Rebel son is a powerful, big bodied, perfectly structured individual. Cow is straight out of the NJW program. Propaganda says it's hard to compile muscle with marbling and keep the cattle good footed and maternal. We say this kind can fix a lot of problems while being maternal in type and produce cattle that gain and grid well.

14

## ERNST DIVERGENT 303

DOB: 2/1/23

REG: P44457650

YEARLING

LE% PIGMENT: 100

RE% PIGMENT: 80

CSC 502 6209 GOLD CREEK 824

CRR 824 DIVERGENT 170

CRR 028X JULIANNA 608

CMF ERNST POWER BROKER 405F

ERNST MS POWER BROKER 119

ERNST MS VICTOR 332 9101



CED	BW	WW	YW	DMI	SC	SCF	MILK	MG	CEM
10.3	-1.8	43	67	0.4	1.1	15.5	27	49	1.5
MCW	US	TS	CW	FAT	REA	MARB	BMI	BII	CHB
43	1.40	1.50	61	0.021	0.48	0.21	324	388	108

### HOMOZYGOUS POLLED

For a calving ease bull, he has a lot of dimension and very structurally sound. He is moderate framed that packs a punch. He has a great attitude. His dam is a moderate framed dark red cow with a great udder. His BW EPD ranks in the upper 2% of the breed, while his CED ranks in the upper 6% of the breed.







— Lot 15 —

### ERNST DIVERGENT 304

15

DOB: 2/2/23 REG: P44457651 YEARLING

LE% PIGMENT: 70 RE% PIGMENT: 100

CSC 502 6209 GOLD CREEK 824  
CRR 824 DIVERGENT 170  
CRR 028X JULIANNA 608

JDH AH PROMINENT 216 ET  
ERNST MS PROMINENT 128  
ERNST MS BUILT 485



CED	BW	WW	YW	DMI	SC	SCF	MILK	MG	CEM
12.0	-1.8	44	65	0.2	1.7	23.0	28	50	5.7
MCW	US	TS	CW	FAT	REA	MARB	BMI	BII	CHB
35	1.60	1.70	63	0.091	0.37	0.31	436	516	114

#### HOMOZYGOUS POLLED

Moderate framed with a deep rib, excellent muscle score and structurally sound. Divergent sire and Prominent dam make for an excellent pedigree. BW ranks in the upper 2% of the breed and CED ranks in the upper 3% of the breed.



— Lot 16 —

### ERNST DIVERGENT 311

16

DOB: 3/12/23 REG: P44457666 YEARLING

LE% PIGMENT: 100 RE% PIGMENT: 100

CSC 502 6209 GOLD CREEK 824  
CRR 824 DIVERGENT 170  
CRR 028X JULIANNA 608

CMF ERNST POWER BROKER 405F  
ERNST MS POWER BROKER 120  
ERNST MS SENSATION 847



CED	BW	WW	YW	DMI	SC	SCF	MILK	MG	CEM
11.6	-0.2	53	88	0.6	1.2	19.3	27	54	6.6
MCW	US	TS	CW	FAT	REA	MARB	BMI	BII	CHB
86	1.60	1.50	75	0.031	0.57	0.14	395	469	121

#### HOMOZYGOUS POLLED

An eye catching son of Divergent out of a fabulous first calf Power Broker daughter. Goggle eyed, red-necked with a big red spot in the middle of his forehead. A super attractive herd bull prospect that is deep and thick and a no miss heifer prospect that will work well on cows as well. Don't miss this bull in the pens or on the video! CED is in the upper 3% of the breed and BW is upper 6%.



— Lot 17 —

### ERNST DIVERGENT 321

17

DOB: 2/15/23 REG: P44458191 YEARLING

LE% PIGMENT: 100 RE% PIGMENT: 30

CSC 502 6209 GOLD CREEK 824  
CRR 824 DIVERGENT 170  
CRR 028X JULIANNA 608

CMF ERNST POWER BROKER 405F  
ERNSTMS POWER BROKER 108  
ERNST MS SENSATION 838



CED	BW	WW	YW	DMI	SC	SCF	MILK	MG	CEM
10.6	-0.6	59	92	0.4	1.2	26.4	29	58	6.9
MCW	US	TS	CW	FAT	REA	MARB	BMI	BII	CHB
72	1.40	1.40	69	0.031	0.43	0.05	487	566	105

#### HOMOZYGOUS POLLED

Red-necked and short marked, with a long body and a big hip. He is very sound structurally with a long stride. Both CED and BW are in the top 5% of the breed.



— Lot 18 —

### ERNST DIVERGENT 331

18

DOB: 2/24/23 REG: P44458248 YEARLING

LE% PIGMENT: 30 RE% PIGMENT: 60

CSC 502 6209 GOLD CREEK 824  
CRR 824 DIVERGENT 170  
CRR 028X JULIANNA 608

CMF ERNST POWER BROKER 405F  
ERNST MS POWER BROKER 131  
ERNSTN 5111 MS SENTRY 8114



CED	BW	WW	YW	DMI	SC	SCF	MILK	MG	CEM
7.9	-0.2	48	75	0.4	1.1	25.8	28	52	3.8
MCW	US	TS	CW	FAT	REA	MARB	BMI	BII	CHB
45	1.50	1.60	51	0.021	0.21	0.24	462	542	97

#### HOMOZYGOUS POLLED

Moderate framed that is long sided and deep bodied. Has a really good hip and leg structure. BW and CED are in the upper 10% for the breed.



— Lot 19 —

## BAR STAR FORWARD 3029

19

DOB: 2/26/23

REG: P44508157

YEARLING

LE% PIGMENT: GOGGLE

RE% PIGMENT: 30

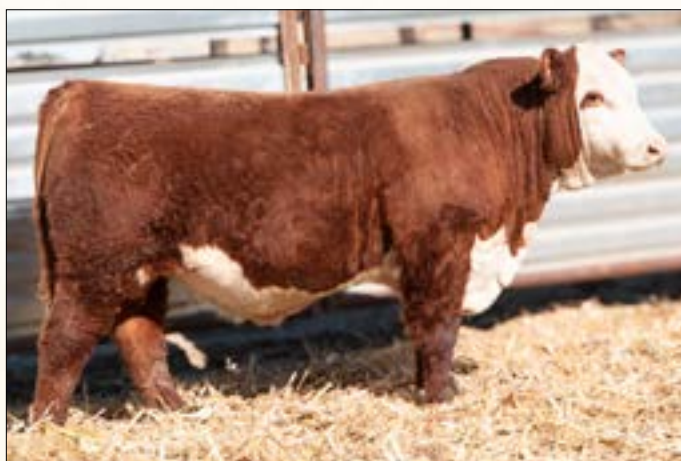
NJW 792 33B FORWARD 252F  
HH ILR FORWARD 1056J ET  
HH MISS ADVANCE 5013C ET

HARVIE SMOKE STACK ET 195B  
BAR STAR MS 195B PROSPECTA 625  
BAR STAR 1010 MS PROSPCTOR 412

CED	BW	WW	YW	DMI	SC	SCF	MILK	MG	CEM
-1.4	4.3	71	109	0.6	0.9	22.8	25	60	-0.9
MCW	US	TS	CW	FAT	REA	MARB	BMI	BII	CHB
85	1.50	1.50	83	0.021	0.48	0.12	452	544	126

### POLLED

This one resembles his maternal granddaddy, Smoke Stack, in both look, color and pigment. He's got plenty of back and hip shape and is neat up through his neck and shoulder. Huge BMIS on this one with great growth numbers towards the top of the breed with a rockin' 70 WW!



— Lot 20 —

## BAR STAR FORMULA 3048

20

DOB: 3/4/23

REG: P44495508

YEARLING

LE% PIGMENT: 100

RE% PIGMENT: 100

NJW 792 33B FORWARD 252F  
HH ILR FORWARD 1056J ET  
HH MISS ADVANCE 5013C ET

MOHICAN BAR STAR REVVED UP 78A  
BAR STAR MS 78A WHATAGIRL 802  
BAR STAR MS 1010 WHATAGIRL 617

CED	BW	WW	YW	DMI	SC	SCF	MILK	MG	CEM
4.0	3.3	69	106	0.5	1.4	18.8	26	61	1.9
MCW	US	TS	CW	FAT	REA	MARB	BMI	BII	CHB
122	1.40	1.30	83	0.031	0.51	0.05	398	481	122

### HETERO POLLED

The Forward progeny are insanely high performing. This one is good looking with an elite pedigree combining proven sires and dams; foundation here with Revved Up, Built Tuff and 410 and with elite cows at Holdens and NJW. He's the big bodied easy fleshing type we demand with a consistent script. Top 25% \$BMI with that big 404 on paper. Heterozygous Smooth Polled.



— Lot 21 —

## BAR STAR REPLY 3058

21

DOB: 3/5/23

REG: P44498431

YEARLING

LE% PIGMENT: GOGGLE

RE% PIGMENT: GOGGLE

NJW 792 33B FORWARD 252F  
HH ILR FORWARD 1056J ET  
HH MISS ADVANCE 5013C ET

KT BUILT TUFF 1010  
BAR STAR MS 1010 REVETTE 714  
ERNST 78A DOM REVVEWTTTE 523

CED	BW	WW	YW	DMI	SC	SCF	MILK	MG	CEM
2.0	1.8	63	94	0.6	1.2	17.7	27	58	1.9
MCW	US	TS	CW	FAT	REA	MARB	BMI	BII	CHB
80	1.60	1.60	70	0.021	0.27	0.32	371	465	125

### HOMOZYGOUS POLLED

A HOMOZYGOUS POLLED FORWARD SON! Harrison's calf. This is the natural calf out of the 714 donor. We always strive to find a bull out of a great cow and this one checks every box we look for and we probably need our head examined as to why he's in the sale. In the pursuit of offering the best here comes a low-birth-weight high growth bull that checks a lot of boxes on paper. Stacking in great cow families on the sire and dam side and a top 10% Marbling with all the aesthetics of color. It's difficult to make them like this very often.





— Lot 22 —



### BAR STAR FORWARD 3071 ET

DOB: 3/8/23 REG: 44512597 YEARLING

LE% PIGMENT: 80 RE% PIGMENT: 0

NJW 79Z 33B FORWARD 252F  
HH ILR FORWARD 1056J ET  
HH MISS ADVANCE 5013C ET

KT BUILT TUFF 1010  
BAR STAR MS 1010 REVETTE 714  
ERNST 78A DOM REVVEWTTT 523



CED	BW	WW	YW	DMI	SC	SCF	MILK	MG	CEM
4.2	2.7	66	98	0.6	1.0	15.5	28	61	-0.5
MCW	US	TS	CW	FAT	REA	MARB	BMI	BII	CHB
81	1.70	1.60	89	0.021	0.49	0.30	362	457	150



### BAR STAR FOREFRONT 3121 ET

DOB: 3/8/23 REG: 44491415 YEARLING

LE% PIGMENT: GOGGLE RE% PIGMENT: GOGGLE

NJW 79Z 33B FORWARD 252F  
HH ILR FORWARD 1056J ET  
HH MISS ADVANCE 5013C ET

KT BUILT TUFF 1010  
BAR STAR MS 1010 REVETTE 714  
ERNST 78A DOM REVVEWTTT 523



CED	BW	WW	YW	DMI	SC	SCF	MILK	MG	CEM
3.1	3.1	74	113	0.6	1.3	17.0	32	69	-0.9
MCW	US	TS	CW	FAT	REA	MARB	BMI	BII	CHB
99	1.60	1.50	96	0.001	0.46	0.18	391	487	153



### HORNED

This is one reads on paper exactly like we strive: Huge preweaning growth (top 11%), good milk, elite udder and teat figures at 1.70/1.60 (top 1%), below average mature cow weight and big carcass. Then you look to find a big, powerful, massive bull with as big of a hip on one as they make. Out of Harrison's elite young donor cow that is a consistent producer of quality. Full brothers sell as lot



— Lot 23 —

### HORNED

This red-eyed, massive and masculine bull comes in a power packed design. Couple that with elite growth in the top 2% for weaning weight and top 6% for YW he pushes to the FOREFRONT on Horned bulls anywhere. Add all the carcass merit to this one's maternally bred pedigree and you get a great BMI to CHB combo with CHB settling in at top 6%. This one made my eyes bulge at weaning and he's going to make some incredible feeder cattle for someone. Full brothers sell as lot

24

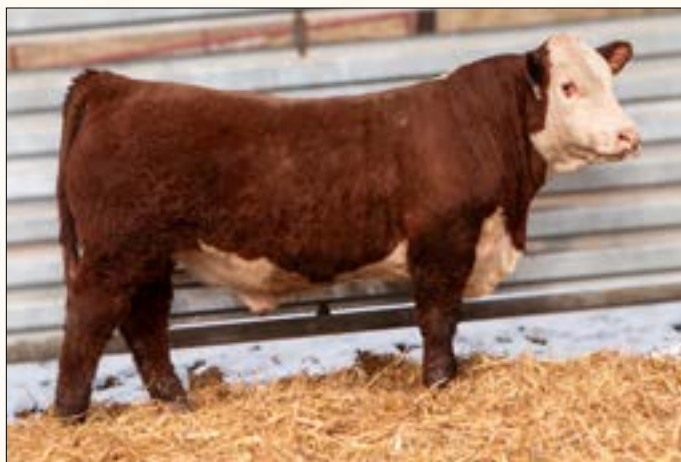
**BAR STAR MASTERPLAN 3054**

DOB: 3/4/23 REG: P44510460 YEARLING

LE% PIGMENT: 100 RE% PIGMENT: 100

KCF BENNETT STRATEGY Z303 ET  
**TH MASTERPLAN 183F**  
TH 512X 145Y DOMINETTE 578LJR 023R WHITMORE 10W  
**NJW 30Z 10W PRAIRIE 4B**  
NJW 223X 174X PRAIRIE 30Z

— Lot 25 —



— Lot 26 —

CED	BW	WW	YW	DMI	SC	SCF	MILK	MG	CEM
1.9	2.3	66	106	0.3	1.2	18.6	23	56	5.6
MCW	US	TS	CW	FAT	REA	MARB	BMI	BII	CHB
82	1.40	1.40	61	0.011	0.31	0.20	381	471	116

**POLLED**

The only Masterplan in the sale. They have been wildly popular at our friend's Topp Herefords in ND. This one is typical of the big rib they have and very useful numbers this sire group generates. Out of great 10W daughter straight from NJW. DB test pending at catalog cutoff.

25

**BAR STAR 045 CATALYZE 3105**

DOB: 3/28/23 REG: P44529597 YEARLING

LE% PIGMENT: 0 RE% PIGMENT: GOGGLE

CRR 719 CATAPULT 109  
**BAR STAR CATALYZE 1111**  
BAR STAR 78PVICTRESS 828 ETHARVIE SMOKE STACK ET 195B  
**BAR STAR 218F MS REVETTE 045**  
BAR STAR MS 1010 REVETTE 714

CED	BW	WW	YW	DMI	SC	SCF	MILK	MG	CEM
-2.3	5.1	69	110	0.3	1.4	12.7	22	57	1.4
MCW	US	TS	CW	FAT	REA	MARB	BMI	BII	CHB
112	1.30	1.20	86	0.021	0.45	0.39	336	437	165

**HOMOZYGOUS POLLED**

Good cow bull with crazy muscle, you have to get behind this one to believe how thick he is. He's got great weaning growth numbers and a big goggle eye on the one side make him a real eye catcher in the pen. Did I say how big hipped he is yet?

26

**BAR STAR MAXIMIZE 3104**

DOB: 4/4/23 REG: P44512611 YEARLING

LE% PIGMENT: GOGGLE RE% PIGMENT: 100

BAR STAR MAGNITUDE 737  
**BAR STAR MAGNIFIED 1132**  
ERNST MS 525B DOMINO TIME 622BAR STAR SEISMIC 765  
**BAR STAR MS REVETTE 905**  
BAR STAR MS 1010 REVETTE 714

CED	BW	WW	YW	DMI	SC	SCF	MILK	MG	CEM
-1.4	3.8	67	102	0.3	1.2	10.5	31	65	1.6
MCW	US	TS	CW	FAT	REA	MARB	BMI	BII	CHB
94	1.50	1.50	67	-0.049	0.44	0.12	273	351	119

**POLLED/SCURRED**

Massive muscle on this April calf. Another one of Harrison's out of his elite set of cows. This one is so good looking from the side and wide from behind. Great feet and big testicles. Harrison might want to negotiate terms on this one on sale day.





— Lot 27 —

### BAR STAR 039 TALLADEGA 3013

27

DOB: 2/13/23 REG: 44529588 YEARLING  
LE% PIGMENT: 80 RE% PIGMENT: 100

NJW 103Y 174X DIABLO 156C ET  
BLAIR-ATHOL AD TALLADEGA 48J  
BLAIR-ATHOL 124E APPLAUSE 122G

HARVIE SMOKE STACK ET 195B  
BAR STAR 218F MS BLTSTACKD 039  
BAR STAR MS 0124 BLTSTACKD 504

CED	BW	WW	YW	DMI	SC	SCF	MILK	MG	CEM
10.1	0.1	56	86	0.5	0.7	20.0	21	49	4.9
MCW	US	TS	CW	FAT	REA	MARB	BMI	BII	CHB
73	1.40	1.40	76	0.011	0.51	0.15	405	483	123

#### DEHORND

Huge BMI in a heifer safe option. More traditional in his markings for this one. Heifer safe, moderate framed, still lots of muscle and a huge \$BMI. He's what Bar Star bulls are known for in the fundamentals.



— Lot 28 —

### BAR STAR 077 TALLADEGA 3074

28

DOB: 3/9/23 REG: P44529585 YEARLING  
LE% PIGMENT: 100 RE% PIGMENT: 100

NJW 103Y 174X DIABLO 156C ET  
BLAIR-ATHOL AD TALLADEGA 48J  
BLAIR-ATHOL 124E APPLAUSE 122G

RU BA 27C CANNON 218F  
BAR STAR VICTORIA 077  
MC VICTORIA 633 W920

CED	BW	WW	YW	DMI	SC	SCF	MILK	MG	CEM
10.2	0.6	52	79	0.0	0.7	19.0	35	62	6.9
MCW	US	TS	CW	FAT	REA	MARB	BMI	BII	CHB
97	1.30	1.40	75	0.011	0.59	0.01	401	464	118

#### POLLED/SCURRED

The Talladega sire group is loaded with maternal strength. His dam is probably the best uddered beef animal in any breed we have ever seen. He was obtained to clean up heifers and add that maternal punch we all desire in a moderate package. This heifer safe son is just that!



### BAR STAR 041 TALLADEGA 3112

29

DOB: 4/1/23 REG: P44529587 YEARLING  
LE% PIGMENT: 100 RE% PIGMENT: 90

NJW 103Y 174X DIABLO 156C ET  
BLAIR-ATHOL AD TALLADEGA 48J  
BLAIR-ATHOL 124E APPLAUSE 122G

RU BA 27C CANNON 218F  
ERNST BSC 218F MS GOLDEN 041  
ERNST MS 1010 GOLDEN 637

CED	BW	WW	YW	DMI	SC	SCF	MILK	MG	CEM
11.0	0.4	54	71	0.2	1.4	24.9	36	63	3.7
MCW	US	TS	CW	FAT	REA	MARB	BMI	BII	CHB
45	1.40	1.50	60	0.001	0.42	0.04	458	528	91

#### POLLED/SCURRED

This is a little younger bull that we would recommend for heifers or a later turn out date. He's moderate, thick and has a big \$BMI while being super easy fleshing. Did you know that studies have proven that Angus cows now mature at the biggest weight of any breed? Tone them down with this one.



— Lot 30 —

### BAR STAR 076 TALLADEGA 3120

30

DOB: 4/15/23 REG: P44529598 YEARLING  
LE% PIGMENT: 100 RE% PIGMENT: 100

NJW 103Y 174X DIABLO 156C ET  
BLAIR-ATHOL AD TALLADEGA 48J  
BLAIR-ATHOL 124E APPLAUSE 122G

RU BA 27C CANNON 218F  
BAR STAR 218F ON THE RISE 076  
ERNST 404 78A ON THE RISE 608

CED	BW	WW	YW	DMI	SC	SCF	MILK	MG	CEM
5.0	1.9	50	76	0.2	0.3	20.3	26	52	2.0
MCW	US	TS	CW	FAT	REA	MARB	BMI	BII	CHB
58	1.50	1.50	60	0.021	0.55	0.02	391	454	92

#### SCURRED

Fair warning...this one does have white nuts. Besides that he's got a big ole hip on him and a very well balanced and put together build. This one is mostly Canadian bred except for the 608 cow in his pedigree who is one of our top cows in our herd.



— Lot 31 —



## BAR STAR 410 DISTINCT 2248 ET

DOB: 9/13/22

REG: P44529518

18-MONTH OLD

LE% PIGMENT: 40

RE% PIGMENT: 10

NJW 160B 028X HISTORIC 81E ET

**H B DISTINCT**

H DS MISS SPICE 8082

STAR STROKE OGENIUS 91X ET

**BAR STAR 91X WHATAGIRL 410**

MOHICAN WHATAGIRL 6Y



CED	BW	WW	YW	DMI	SC	SCF	MILK	MG	CEM
9.3	0.7	68	107	0.5	1.9	18.2	36	70	5.9
MCW	US	TS	CW	FAT	REA	MARB	BMI	BII	CHB
99	1.20	1.30	90	0.021	0.81	0.19	411	500	151

### HOMOZYGOUS POLLED

Out of the great 410 cow and Distinct who we own part of that is making an impact on the breed and industry. This bull is big, rugged, and complete made. Massive and masculine makes the profit end of the business go round. Bulls gotta look like bulls! Consistent epd script.



— Lot 32 —



## BARSTAR ERNST DISTINCT 3014 ET

DOB: 2/13/23

REG: P44529850

YEARLING

LE% PIGMENT: 100

RE% PIGMENT: 100

NJW 160B 028X HISTORIC 81E ET

**H B DISTINCT**

H DS MISS SPICE 8082

JDH VICTOR 719T 33Z ET

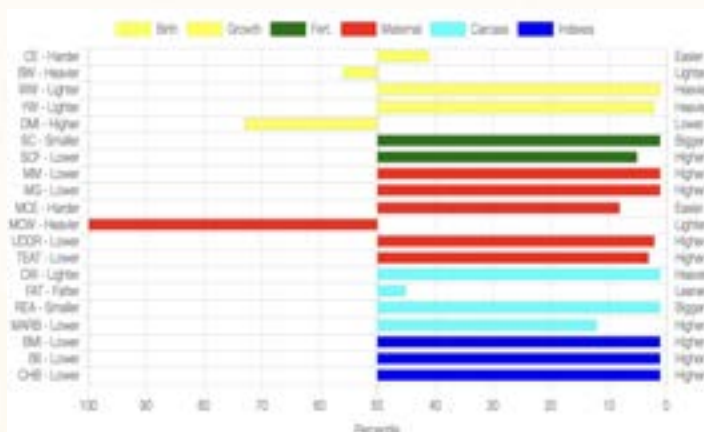
**JDH AH MS 34X VICTOR 33Z45C ET**

AH JDH MS 25L WRANGLER 34X ET

CED	BW	WW	YW	DMI	SC	SCF	MILK	MG	CEM
4.2	3.0	80	120	0.5	2.2	23.4	41	81	6.5
MCW	US	TS	CW	FAT	REA	MARB	BMI	BII	CHB
134	1.50	1.50	108	0.021	1.15	0.30	530	639	188

### HOMOZYGOUS POLLED

Marshall purchased a flush on one of the all-time greatest cows in the breed. This bull resulted from the first group of embryos implanted from that flush. Raised in Montana, this one is about as complete on tabulation as one can get. Elite profitability indexes with all 3 in the top 1% of the breed! top 1% in 9 categories! Great phenotype and superior numbers. Just like we like them! Don't miss this one!





33

**BAR STAR DISTINCT 3004**

DOB: 1/31/23

REG: P44517693

YEARLING

LE% PIGMENT: 100

RE% PIGMENT: 60

NJW 160B 028X HISTORIC 81E ET

**H B DISTINCT**

H DS MISS SPICE 8082

BAR STAR MAGNITUDE 737

**BAR STAR MS 737 PROSPECTA 1127**

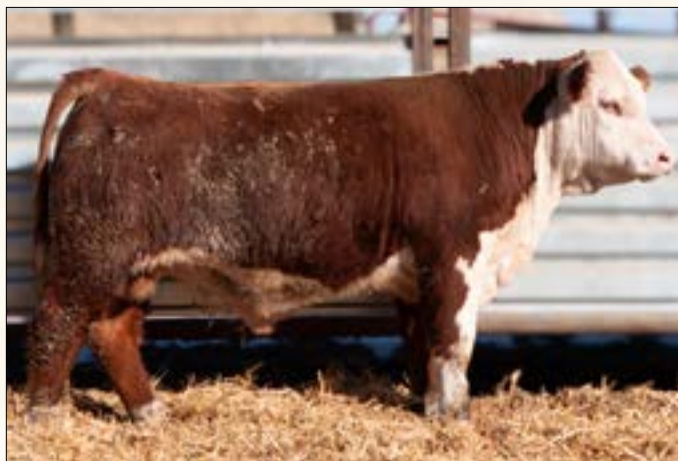
BAR STAR 0124 MS PROSPCTOR 416



CED	BW	WW	YW	DMI	SC	SCF	MILK	MG	CEM
12.0	-0.4	56	88	0.5	1.4	16.6	31	59	6.2
MCW	US	TS	CW	FAT	REA	MARB	BMI	BII	CHB
106	1.30	1.40	77	0.041	0.63	0.17	363	440	123

**POLLED**

Heifer bull alert! This moderate and massive heifer bull will add value to a set of black heifers. Solid bone for a heifer safe package that's top 10% for CED and BW.



— Lot 33 —

34

**BAR STAR DISTINCT 3032**

DOB: 2/27/23

REG: P44508156

YEARLING

LE% PIGMENT: 60

RE% PIGMENT: GOGGLE

NJW 160B 028X HISTORIC 81E ET

**H B DISTINCT**

H DS MISS SPICE 8082

NJW 78P TWENTYTWELVE 190Z ET

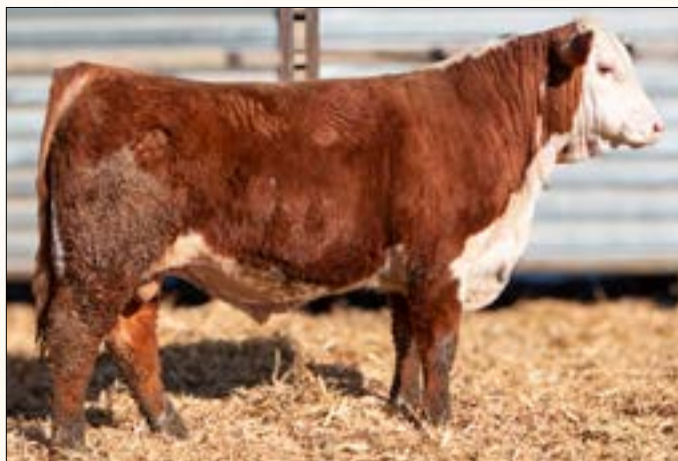
**BAR STAR MS 78PVICTRESS 828 ET**

ERNST MS 910 VICTRESS 155

CED	BW	WW	YW	DMI	SC	SCF	MILK	MG	CEM
1.6	2.9	63	100	0.5	1.2	17.7	30	62	1.4
MCW	US	TS	CW	FAT	REA	MARB	BMI	BII	CHB
107	1.30	1.40	73	0.021	0.62	0.16	381	464	122

**POLLED/SCURRED**

Big powerful bull that his growth numbers match his type with a little extra stretch and pop to him. Being a distinct we know he's going to combine maternal with carcass. We use a maternal brother to this bull (Catalyze 1111) in our purebred herd.



— Lot 34 —

35

**BAR STAR DISTINCT 3035**

DOB: 2/27/23

REG: P44508155

YEARLING

LE% PIGMENT: 10

RE% PIGMENT: 0

NJW 160B 028X HISTORIC 81E ET

**H B DISTINCT**

H DS MISS SPICE 8082

STAR STROKE OGENIUS 91X ET

**BAR STAR 91X HEIDI GENIUS 411**

WAGNERS HEIDI 1203

CED	BW	WW	YW	DMI	SC	SCF	MILK	MG	CEM
-0.7	3.9	70	109	0.6	1.4	19.6	32	67	1.6
MCW	US	TS	CW	FAT	REA	MARB	BMI	BII	CHB
101	1.10	1.20	83	0.041	0.72	0.13	414	503	128

**POLLED**

This one might not have that dark color on his eyes or body that some do but besides that this one is flat awesome. He's one of the elite performance bulls ever here. He's big, rugged, massive, masculine and just flat good. Pounds are dollars! Top 10% growth in the breed!



— Lot 35 —



— Lot 36 —



— Lot 37 —



— Lot 38 —

## BAR STAR DISTINCT 3045

36

DOB: 3/4/23

REG: P44510437

YEARLING

LE% PIGMENT: 0

RE% PIGMENT: 0

NJW 160B 028X HISTORIC 81E ET  
**H B DISTINCT**  
H DS MISS SPICE 8082

MOHICAN BAR STAR REVVED UP 78A  
**BAR STAR MS 78Z VICTORIA 724**  
MC VICTORIA 633 W920



CED	BW	WW	YW	DMI	SC	SCF	MILK	MG	CEM
9.9	0.4	53	80	0.3	1.0	21.1	24	51	5.8
MCW	US	TS	CW	FAT	REA	MARB	BMI	BII	CHB
50	1.30	1.40	76	0.051	0.61	0.16	423	499	124

### HOMOZYGOUS POLLED

A top 20% Baldy Maker Index in a chunky, stout, easy fleshing build that is top 10% CED and BW as well! This one will flat fire on a black cow and make the kind of cattle that eat less and convert more. Really good kind of heifer bull and he's got carcass!

## BAR STAR 976 DISTINCT 3067

37

DOB: 3/6/23

REG: P44529590

YEARLING

LE% PIGMENT: 0

RE% PIGMENT: GOGGLE

NJW 160B 028X HISTORIC 81E ET  
**H B DISTINCT**  
H DS MISS SPICE 8082

BK BOZ B88 ET  
**BAR STAR MS B88 ECLIPSE 976**  
BAR STAR MS 0124 ECLIPSE 624



CED	BW	WW	YW	DMI	SC	SCF	MILK	MG	CEM
9.2	0.5	67	101	0.4	1.3	17.0	26	60	7.9
MCW	US	TS	CW	FAT	REA	MARB	BMI	BII	CHB
92	1.40	1.40	76	-0.029	0.84	0.06	376	452	125

### POLLED/SCURRED

If you like feeding good looking stock all winter this one could really class up a set of cows and make those super pretty females

## BAR STAR 644 DISTINCT 3077

38

DOB: 1/20/23

REG: P44529596

YEARLING

LE% PIGMENT: 70

RE% PIGMENT: GOGGLE

NJW 160B 028X HISTORIC 81E ET  
**H B DISTINCT**  
H DS MISS SPICE 8082

RST TIMES A WASTIN 0124  
**BAR STAR MS 0124 LOADED 644**  
KT MS 7822 LOADED 9165



CED	BW	WW	YW	DMI	SC	SCF	MILK	MG	CEM
11.6	0.2	59	91	0.4	1.4	18.1	29	59	5.4
MCW	US	TS	CW	FAT	REA	MARB	BMI	BII	CHB
84	1.30	1.30	70	0.021	0.59	0.14	381	459	119

### SCURRED

Distinct makes a lot of them very similar. Here's just a solid numbered one that is out of a cow that flat gets it done each year. His full brother sold in last year's sale. Back to back matings to the same sire means we liked that one a lot.



39

**ERNST POWER BROKER 307**

DOB: 2/10/23

REG: P44457658

YEARLING

LE% PIGMENT: 10

RE% PIGMENT: 100

CMF ERNST POWER BROKER 405F

**ERNST POWER BROKER 115**

ERNST MS BUILT TUFF 839

UPS SENSATION 2504 ET

**ERNST MS SENSATION 736 9117**

ERNST MS BUILT TUFF 6036



CED	BW	WW	YW	DMI	SC	SCF	MILK	MG	CEM
15.8	-3.3	52	82	0.1	1.1	19.0	23	49	8.0
MCW	US	TS	CW	FAT	REA	MARB	BMI	BII	CHB
78	1.50	1.60	66	0.001	0.50	0.31	403	485	138

**POLLED/SCURRED**

You'd have to drive many miles to find a better Hereford calving ease sire! Red-necked with a big red spot on the right side of his face. Moderate frame with good muscle expression. Both CED and BW rank in the upper 1% of the breed!



— Lot 39 —

40

**ERNST POWER BROKER 316**

DOB: 2/14/23

REG: P44457673

YEARLING

LE% PIGMENT: 70

RE% PIGMENT: 0

R LEADER 6964

**CMF ERNST POWER BROKER 405F**

CMF 124B DOMINETTE 297D

ERNST A028 ON TARGET 716

**ERNST MS 716 TARGET 039**

ERNST MS S109 GOLD 497 ET



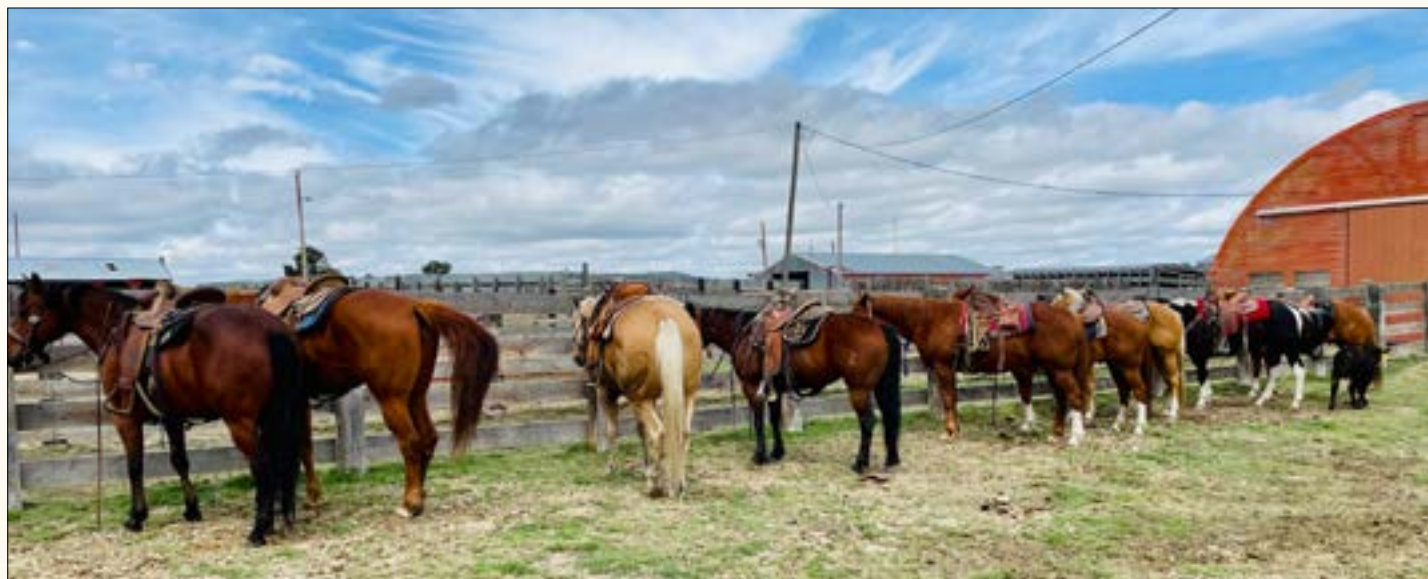
CED	BW	WW	YW	DMI	SC	SCF	MILK	MG	CEM
12.0	-1.3	66	100	0.2	1.3	22.4	29	62	6.6
MCW	US	TS	CW	FAT	REA	MARB	BMI	BII	CHB
109	1.60	1.70	78	0.041	0.74	0.21	468	559	141

**POLLED**

Good birth to yearling EPD spread, in a moderate frame package. Both CED and BW rank in the top 3% of the breed!



— Lot 40 —





— Lot 41 —

41

## ERNST POWER BROKER 318

DOB: 2/13/23

REG: P44458185

YEARLING

LE% PIGMENT: 100

RE% PIGMENT: 90

R LEADER 6964

CMF ERNST POWER BROKER 405F

CMF 124B DOMINETTE 297D

ERNST A028 ON TARGET 716

ERNST MS 716 TARGET 038

ERNST 5111 MS TUFFY 885



CED	BW	WW	YW	DMI	SC	SCF	MILK	MG	CEM
14.6	-2.2	67	104	0.3	1.2	22.5	32	66	6.2
MCW	US	TS	CW	FAT	REA	MARB	BMI	BII	CHB
71	1.60	1.70	85	0.061	0.67	0.34	474	576	159

### POLLED

Easy keeping, big topped and growthy bull, with a nice disposition. Red-neck with excellent pigment. CED in the top 1% of the breed and BW in the top 2% of the breed.



— Lot 42 —

42

## ERNST POWER BROKER 320

DOB: 3/13/23

REG: P44458190

YEARLING

LE% PIGMENT: 100

RE% PIGMENT: 100

CMF ERNST POWER BROKER 405F

ERNST POWER BROKER 115

ERNST MS BUILT TUFF 839

ERNST BUILT RIGHT 5111

ERNSTN 5111 MS SENTRY 8114

ERNST 7X MS SENTINEL 357

CED	BW	WW	YW	DMI	SC	SCF	MILK	MG	CEM
19.2	-3.8	47	69	0.2	1.4	21.3	26	49	7.5
MCW	US	TS	CW	FAT	REA	MARB	BMI	BII	CHB
75	1.60	1.70	67	0.021	0.36	0.34	427	509	131

### POLLED

There are few bulls in the Hereford breed that will exceed this bulls calving ease numbers. Deep ribbed and a lot of muscle shape. Short marked and red necked. BW and CED in the upper 1% for the breed.



— Lot 43 —

43

## ERNST POWER BROKER 326

DOB: 2/20/23

REG: P44458215

YEARLING

LE% PIGMENT: 100

RE% PIGMENT: 10

R LEADER 6964

CMF ERNST POWER BROKER 405F

CMF 124B DOMINETTE 297D

KT BUILT TUFF 1010

ERNST MS BUILT RIGHT 5138

ERNST MS TAYLOR 174



CED	BW	WW	YW	DMI	SC	SCF	MILK	MG	CEM
3.1	3.5	66	107	0.3	1.7	17.5	27	60	4.2
MCW	US	TS	CW	FAT	REA	MARB	BMI	BII	CHB
109	1.30	1.40	68	0.001	0.34	0.24	381	473	132

### HOMOZYGOUS POLLED

He is what I would call a rancher's bull. Long bodied power bull, that is red necked and short marked. WW and YW EPD in the upper 12% of the breed.



44

**ERNST POWER BROKER 333**

DOB: 2/24/23

REG: P44458252

YEARLING

LE% PIGMENT: 0

RE% PIGMENT: 100

R LEADER 6964

**CMF ERNST POWER BROKER 405F**

CMF 124B DOMINETTE 297D

KT BUILT TUFF 1010

**ERNST MS BUILT SPECIAL 5101**

ERNST 8619 MS KINDA SPECL 349



CED	BW	WW	YW	DMI	SC	SCF	MILK	MG	CEM
8.7	0.4	60	87	0.3	1.6	23.8	20	50	2.2
MCW	US	TS	CW	FAT	REA	MARB	BMI	BII	CHB
73	1.60	1.70	60	0.001	0.55	0.38	466	564	130

**HOMOZYGOUS POLLED**

Deep ribbed and muscular. He exhibits power and maintains an excellent structure. Very well balanced look. BW and CED in the top 10% for the breed.



— Lot 44 —



— Lot 45 —

45

**ERNST POWER BROKER 336**

DOB: 2/25/23

REG: P44458280

YEARLING

LE% PIGMENT: 100

RE% PIGMENT: 80

R LEADER 6964

**CMF ERNST POWER BROKER 405F**

CMF 124B DOMINETTE 297D

KT BUILT TUFF 1010

**ERNST KCL MS TUFF BUILT 001**

ERNST MS SENSATION 838



CED	BW	WW	YW	DMI	SC	SCF	MILK	MG	CEM
13.3	-1.5	65	98	0.1	1.2	26.4	33	66	9.3
MCW	US	TS	CW	FAT	REA	MARB	BMI	BII	CHB
78	1.50	1.50	68	0.041	0.51	0.42	521	629	147

**HOMOZYGOUS POLLED**

I can't say enough good things about this bull. Excellent pigment, dark red, and really short marked. Rugged power bull that is still an excellent heifer prospect. Freckled faced son by an outstanding dam. CED and BW EPD both in the upper 3% of the breed.



— Lot 46 —

46

## ERNST POWER BROKER 339

DOB: 2/26/23

REG: P44458287

YEARLING

LE% PIGMENT: 100

RE% PIGMENT: 80

R LEADER 6964

CMF ERNST POWER BROKER 405F

CMF 124B DOMINETTE 297D

UPS SENSATION 2504 ET

ERNST SENSATION 832

ERNST MS 8619 DOMINO 206



CED	BW	WW	YW	DMI	SC	SCF	MILK	MG	CEM
8.4	-0.8	65	97	0.0	1.5	22.3	33	65	4.7
MCW	US	TS	CW	FAT	REA	MARB	BMI	BII	CHB
101	1.50	1.60	79	0.001	0.75	0.30	479	574	157

### POLLED

Moderate framed meat wagon. Deep sided and soft made, easy keeper. Large red spot on face. BW in the upper 4% of the breed and CED is the upper 12%.



— Lot 47 —

47

## ERNST POWER BROKER 341

DOB: 3/2/23

REG: P44458289

YEARLING

LE% PIGMENT: 0

RE% PIGMENT: 20

R LEADER 6964

CMF ERNST POWER BROKER 405F

CMF 124B DOMINETTE 297D

ERNST BUILT RIGHT 5111

ERNST 5111 MS TUFFY 885

ERNST MS 8619 DOMINO 151



CED	BW	WW	YW	DMI	SC	SCF	MILK	MG	CEM
15.9	-1.0	56	87	0.3	0.7	24.2	25	53	6.9
MCW	US	TS	CW	FAT	REA	MARB	BMI	BII	CHB
84	1.70	1.70	72	0.051	0.46	0.47	485	587	151

### POLLED

A balanced, long strided bull who is structurally sound. Red necked with red on his face. CED in upper 2% and BW in the upper 4% for the breed.



— Lot 48 —

48

## ERNST POWER BROKER 344

DOB: 3/6/23

REG: P44458294

YEARLING

LE% PIGMENT: 20

RE% PIGMENT: 60

R LEADER 6964

CMF ERNST POWER BROKER 405F

CMF 124B DOMINETTE 297D

ERNST SENSATION 758

ERNST MS SENSATIONAL 003

ERNST MS SENSATION 776



CED	BW	WW	YW	DMI	SC	SCF	MILK	MG	CEM
12.2	-1.7	55	89	0.3	1.4	14.8	30	57	3.5
MCW	US	TS	CW	FAT	REA	MARB	BMI	BII	CHB
76	1.50	1.60	65	0.041	0.34	0.29	328	412	125

### HOMOZYGOUS POLLED

His dam is one of my favorites. Long sided, red necked and short marked. CED upper 3% and BW in upper 10% for the breed.



49

**ERNST POWER BROKER345**

DOB: 3/6/23

REG: P44458296

YEARLING

LE% PIGMENT: 100

RE% PIGMENT: 100

R LEADER 6964

**CMF ERNST POWER BROKER 405F**

CMF 124B DOMINETTE 297D

F FINAL TEST 722

**ERNST FINAL TEST 005**

ERNST MS SENTINEL 4101

CED	BW	WW	YW	DMI	SC	SCF	MILK	MG	CEM
-0.9	3.2	78	124	0.5	1.4	16.5	27	66	1.1
MCW	US	TS	CW	FAT	REA	MARB	BMI	BII	CHB
121	1.60	160	80	0.001	0.55	0.39	388	500	158

**POLLED**

Big growthy bull that is long bodied and deep sided. Red necked and short marked. WW and YW EPDs in the upper 1% of the breed. Recommended for cows.



— Lot 49 —

50

**ERNST DIVERGENT 348**

DOB: 3/8/23

REG: P44458299

YEARLING

LE% PIGMENT: 50

RE% PIGMENT: 100

CSC 502 6209 GOLD CREEK 824

**CRR 824 DIVERGENT 170**

CRR 028X JULIANNA 608

CMF ERNST POWER BROKER 405F

**ERNST MS POWER BROKER**

ERNST MS SENSATION 816

CED	BW	WW	YW	DMI	SC	SCF	MILK	MG	CEM
5.2	2.5	64	107	0.5	1.3	19.9	29	62	1.6
MCW	US	TS	CW	FAT	REA	MARB	BMI	BII	CHB
95	1.30	1.30	75	0.021	0.56	0.22	417	507	135

**POLLED**

Balanced EPDs with YW in upper 10%. This is really an attractive meat wagon. Balanced front to back with a deep rib. Be sure to look him up on video and on sale day!



— Lot 50 —

51

**ERNST POWER BROKER 349**

DOB: 3/10/23

REG: P44458302

YEARLING

LE% PIGMENT: 100

RE% PIGMENT: 100

R LEADER 6964

**CMF ERNST POWER BROKER 405F**

CMF 124B DOMINETTE 297D

ERNST 1632 TRUSTED 6027

**ERNST MS 6027 TRUSTED 815**

ERNST MS BUILT TUFF 5141

CED	BW	WW	YW	DMI	SC	SCF	MILK	MG	CEM
6.7	2.0	61	96	0.4	1.2	22.0	27	58	3.4
MCW	US	TS	CW	FAT	REA	MARB	BMI	BII	CHB
104	1.50	1.60	70	-0.019	0.51	0.29	449	541	136

**POLLED**

Balanced EPDs. Growthy bull that will add pounds to the calf crop. Long ribbed, deep bodied with a smooth shoulder. Red to the ground.



— Lot 51 —



— Lot 52 —

52

## ERNST POWER BROKER 352

DOB: 3/13/23

REG: P44458301

YEARLING

LE% PIGMENT: 100

RE% PIGMENT: 100

R LEADER 6964

CMF ERNST POWER BROKER 405F

CMF 124B DOMINETTE 297D

ERNST SENSATION 758

ERNST MS 758 SENSATION 043

SR SENITA 319A



CED	BW	WW	YW	DMI	SC	SCF	MILK	MG	CEM
9.2	-0.3	55	91	0.3	1.4	15.1	28	55	8.7
MCW	US	TS	CW	FAT	REA	MARB	BMI	BII	CHB
94	1.50	1.50	62	0.051	0.52	0.19	332	407	114

### POLLED

Moderate frame and thick topped. Has a freckle face and from a really good dam. CED and BW in the upper 10% of the breed.



— Lot 53 —

53

## ERNST POWER BROKER 357

DOB: 3/19/23

REG: P44458318

YEARLING

LE% PIGMENT: 40

RE% PIGMENT: 60

CMF ERNST POWER BROKER 405F

ERNST POWER BROKER 115

ERNST MS BUILT TUFF 839

ERNST BUILT RIGHT 5111

ERNST 5111MS VICTOR 8101

ERNST 910 VICTOR 164



CED	BW	WW	YW	DMI	SC	SCF	MILK	MG	CEM
9.3	1.2	58	86	0.2	1.3	19.5	26	55	2.1
MCW	US	TS	CW	FAT	REA	MARB	BMI	BII	CHB
91	1.50	1.60	63	0.011	0.41	0.15	394	473	111

### POLLED

Red to the ground and red necked. Long bodied and free moving. Solid structure with great rear leg set. Dam has never missed. CED and BW in the upper 10% of the breed.



— Lot 54 —

54

## ERNST WYO PB 361

DOB: 3/31/23

REG: P44458330

YEARLING

LE% PIGMENT:

RE% PIGMENT:

R LEADER 6964

CMF ERNST POWER BROKER 405F

CMF 124B DOMINETTE 297D

JA LT DOMINO 8619U

ERNST MS 8619 DOMINO 202

K&B SWEET SALLY 6075S

CED	BW	WW	YW	DMI	SC	SCF	MILK	MG	CEM
5.2	0.4	54	84	0.1	1.2	20.4	29	56	3.1
MCW	US	TS	CW	FAT	REA	MARB	BMI	BII	CHB
84	1.50	1.50	60	0.011	0.47	0.21	411	490	116

### POLLED

Stout made, big topped and deep as they come. He has a fantastic 12-year old dam. Recommended for cows.



55

**BAR STAR BUILT RIGHT 2245**

DOB: 9/8/22 REG: 44529852 18-MONTH OLD

LE% PIGMENT: 70 RE% PIGMENT: 50

KT BUILT TUFF 1010  
ERNST BUILT RIGHT 5111  
ERNST MS 8619 DOMINO 165HARVIE SMOKE STACK ET 195B  
BAR STAR 195B ECLIPSE DOM 095  
BAR STAR ECLIPSE DOM 667

CED	BW	WW	YW	DMI	SC	SCF	MILK	MG	CEM
11.5	0.1	61	90	0.5	1.3	17.8	24	54	1.9
MCW	US	TS	CW	FAT	REA	MARB	BMI	BII	CHB
77	1.40	1.40	78	0.011	0.41	0.19	376	460	127

**HORNED**

Big muscle and body in an easy calving package. He's so chunky made we just know his calves are going to be the kind the buyers pay premiums for. He's out of a nice little Smoke Stack daughter and charts an impressive 376 \$BMI!



— Lot 55 —

56

**BAR STAR BUILT RIGHT 2250**

DOB: 9/16/22 REG: 44534752 18-MONTH OLD

LE% PIGMENT: 100 RE% PIGMENT: 70

KT BUILT TUFF 1010  
ERNST BUILT RIGHT 5111  
ERNST MS 8619 DOMINO 165HARVIE SMOKE STACK ET 195B  
BAR STAR MS 195B LOADED 0106  
BAR STAR MS 0124 LOADED 508

CED	BW	WW	YW	DMI	SC	SCF	MILK	MG	CEM
13.0	-0.1	56	83	0.3	1.0	19.2	24	52	6.7
MCW	US	TS	CW	FAT	REA	MARB	BMI	BII	CHB
70	1.40	1.40	72	0.011	0.37	0.16	391	469	120

**HORNED**

Calving ease horned bull that has muscle. So many of these bulls that would work on heifers don't have any "stuff" to them in today's world. This one breaks the stereotype there. Nice solid epd profile.



— Lot 56 —

57

**BAR STAR BUILT RIGHT 2254**

DOB: 9/29/22 REG: P44529517 18-MONTH OLD

LE% PIGMENT: 60 RE% PIGMENT: 100

KT BUILT TUFF 1010  
ERNST BUILT RIGHT 5111  
ERNST MS 8619 DOMINO 165RST TIMES A WASTIN 0124  
BAR STAR MS 0124 PROSPECTA 506  
KT MS K085 PROSPECTOR 4147

CED	BW	WW	YW	DMI	SC	SCF	MILK	MG	CEM
3.4	1.9	58	90	0.2	0.9	13.2	25	54	0.9
MCW	US	TS	CW	FAT	REA	MARB	BMI	BII	CHB
52	1.40	1.40	56	-0.029	0.17	-0.03	276	342	88

**POLLED**

Moderate, masculine and muscular cow bull out a Times A Wastin daughter that does it year after year. He's red, necked, black tailed and nearly black around his eyes.





— Lot 58 —

**58**

### BAR STAR BUILT RIGHT 2257

DOB: 10/7/22

REG: P44529516

18-MONTH OLD

LE% PIGMENT: 70

RE% PIGMENT: 100

KT BUILT TUFF 1010  
ERNST BUILT RIGHT 5111  
ERNST MS 8619 DOMINO 165

RST TIMES A WASTIN 0124  
BAR STAR MS 0124 LOADED 508 {CHB} {DLF, HYF, JEF, MSUDF, MDF}  
RST MS 7822 LOADED 9074

CED	BW	WW	YW	DMI	SC	SCF	MILK	MG	CEM
7.4	2.1	65	102	0.3	0.7	17.6	32	64	8.0
MCW	US	TS	CW	FAT	REA	MARB	BMI	BII	CHB
66	1.10	1.10	70	0.001	0.36	0.09	369	450	118

#### POLLED

One good looking Built Right son that has the muscle, body, and balance to make an eye popping set of calves. Once you look at his figures he doesn't let you down much.



— Lot 59 —

**59**

### BAR STAR BUILT RIGHT 2258

DOB: 10/5/22

REG: P44529522

18-MONTH OLD

LE% PIGMENT: 20

RE% PIGMENT: 80

KT BUILT TUFF 1010  
ERNST BUILT RIGHT 5111  
ERNST MS 8619 DOMINO 165

HARVIE SMOKE STACK ET 1958  
ERNST MS 1958 UNIQUE DOM 660  
ERNST MS 8619 DOMINO 232

CED	BW	WW	YW	DMI	SC	SCF	MILK	MG	CEM
6.5	1.6	59	81	0.4	1.1	19.2	26	56	0.8
MCW	US	TS	CW	FAT	REA	MARB	BMI	BII	CHB
53	1.60	1.60	66	0.001	0.35	0.18	381	463	107

#### POLLED

Huge testicled Built Right out of an absolutely perfect uddered and gorgeous cow. Plenty of muscle and maternal here and why wouldn't it be in a good looking package? Bar Star Kind through and through.



— Lot 60 —

**60**

### BAR STAR BUILT RIGHT 2263

DOB: 10/15/22

REG: P44529515

18-MONTH OLD

LE% PIGMENT: 10

RE% PIGMENT: 0

KT BUILT TUFF 1010  
ERNST BUILT RIGHT 5111  
ERNST MS 8619 DOMINO 165

NJW 73S W18 HOMEGROWN 8Y ET  
NJW 96P 8Y VACA 105C  
NJW 12E COWTOWN VACA 96P

CED	BW	WW	YW	DMI	SC	SCF	MILK	MG	CEM
11.1	1.5	57	88	-0.1	1.3	16.8	31	59	7.6
MCW	US	TS	CW	FAT	REA	MARB	BMI	BII	CHB
92	1.40	1.50	78	0.031	0.44	0.14	378	454	136

#### POLLED

Cow bull that is one massive individual. Huge bodied, big square hip, and style to go along with it. Phenotypic standout. MD test pending at catalog cutoff.





61

## 20 F1 BLACK BALDY OPEN REPLACEMENT FEMALES

Top cut off our home raised heifers. These will make a great set of cows. Pasture developed. Dog, horse, kid, and ATV broke. Storytime: Our baldy herd was fed separately from the black cows the winter following the 2021 drought. The baldies consumed 20% less feed and were a body condition score fatter on a straw ration. Fertile and efficient. We will have them sorted by size.

**A**

Bigger framed heifers - 10 head

**B**

More moderate framed heifers - 10 head

62

## 15 F1 BLACK BALDY OPEN REPLACEMENT FEMALES FROM SKOYEN RANCH

Bubba and Trapper Skoyen have been long time customers of ours. We talked them out of 15 head of heifers right off the top of their replacement pen! Just like ours they are pasture raised and will get out and go once the grass comes.



— LOEWEN GENESIS G16 ET —

REF.  
SIRE

## LOEWEN GENESIS G16 ET

DOB: 1/17/19

REG: P43987463



KCF BENNETT ENCORE Z311 ET  
NJW 79Z Z311 ENDURE 173D ET  
BW 91H 100W RITA 79Z ET

MSU TCF REVOLUTION 4R  
LOEWEN 77 48 MISS 344N 4RB42ET  
PCR JACKLYN NIKOLE 344N

CED	BW	WW	YW	DMI	SC	SCF	MILK	MG	CEM
4.3	3.7	76	132	0.7	1.8	22.8	36	74	6.4
MCW	US	TS	CW	FAT	REA	MARB	BMI	BII	CHB
114	1.30	1.30	108	0.111	0.79	0.49	508	630	197



— BR BELLE AIR 6011 —

REF.  
SIRE

## BR BELLE AIR 6011

DOB: 2/3/16

REG: 43724674



CHURCHILL SENSATION 028X  
BAR S LHF 028 240  
CHURCHILL LADY 078X

GOLDEN OAK OUTCROSS 18U  
BR BELLE 4082 ET  
BR CSF BRIELLE 8052 ET

CED	BW	WW	YW	DMI	SC	SCF	MILK	MG	CEM
0.6	2.5	62	102	0.1	2.7	23.9	38	69	2.4
MCW	US	TS	CW	FAT	REA	MARB	BMI	BII	CHB
97	1.40	1.40	70	0.061	0.51	0.61	503	619	170



— BAR STAR FRESH PRINCE 018 ET —

REF.  
SIRE

## BAR STAR FRESH PRINCE 018 ET

DOB: 2/26/20

REG: P44163502



BAR S LHF 028 240  
BR BELLE AIR 6011  
BR BELLE 4082 ET

STAR STROKE OGENIUS 91X ET  
BAR STAR 91X WHATAGIRL 410  
MOHICAN WHATAGIRL 6Y

CED	BW	WW	YW	DMI	SC	SCF	MILK	MG	CEM
5.1	0.7	62	93	0.3	2.2	21.3	35	66	1.6
MCW	US	TS	CW	FAT	REA	MARB	BMI	BII	CHB
76	1.30	1.30	82	0.061	0.48	0.31	444	540	143



REF.  
SIRE

## BAR STAR REBELLION 013 ET

DOB: 2/26/20

REG: P44163505

BAR S LHF 028 240  
BR BELLE AIR 6011  
BR BELLE 4082 ET

STAR STROKE OGENIUS 91X ET  
BAR STAR 91X WHATAGIRL 410  
MOHICAN WHATAGIRL 6Y

CED	BW	WW	YW	DMI	SC	SCF	MILK	MG	CEM
-3.4	3.9	63	102	0.0	2.1	16.7	27	58	-2.0
MCW	US	TS	CW	FAT	REA	MARB	BMI	BII	CHB
97	1.40	1.40	72	-0.009	0.52	0.19	378	461	137



— BAR STAR REBELLION 013 ET —

REF.  
SIRE

## H B DISTINCT

DOB: 2/8/20

REG: P44184682

CHURCHILL SENSATION 028X  
NJW 160B 028X HISTORIC 81E ET  
NJW 73S 38W DAYDREAM 160B

LCX PERFECTO 11B ET  
H DS MISS SPICE 8082  
H BL MISS SPICE 613 ET

CED	BW	WW	YW	DMI	SC	SCF	MILK	MG	CEM
10.0	0.7	70	107	0.8	1.6	22.1	39	74	5.9
MCW	US	TS	CW	FAT	REA	MARB	BMI	BII	CHB
113	1.30	1.40	94	0.041	1.05	0.25	474	570	153



— H B DISTINCT —

REF.  
SIRE

## CRR 824 DIVERGENT 170

DOB: 2/20/21

REG: P44294516

KT GOLD CREEK 6209  
CSC 502 6209 GOLD CREEK 824  
CSC 10Y LADY DEW 502 ET

CHURCHILL SENSATION 028X  
CRR 028X JULIANNA 608  
CRR 719T JULIANNE 482 ET

CED	BW	WW	YW	DMI	SC	SCF	MILK	MG	CEM
6.7	0.6	50	89	0.4	1.5	21.5	27	53	2.2
MCW	US	TS	CW	FAT	REA	MARB	BMI	BII	CHB
69	1.30	1.30	64	0.071	0.35	0.20	412	491	111



— CRR 824 DIVERGENT 170 —



— BLAIR-ATHOL AD TALLADEGA 48J —

REF.  
SIRE

## BLAIR-ATHOL AD TALLADEGA 48J

DOB: 2/18/21

REG: P44384198



NJW 76S 4037 DURANGO SPIRIT 174X  
NJW 103Y 174X DIABLO 156C ET  
NJW 101U 100W SPIRITQUEEN103Y

MCCOY 53A PATENT 124E  
BLAIR-ATHOL 124E APPLAUSE 122G  
BLAIR-ATHOL 97B CHICKADEE 131D

CED	BW	WW	YW	DMI	SC	SCF	MILK	MG	CEM
7.9	1.8	54	78	0.3	0.3	20.5	31	58	5.9
MCW	US	TS	CW	FAT	REA	MARB	BMI	BII	CHB
70	1.40	1.50	57	-0.009	0.59	-0.08	389	448	79



— CMF ERNST POWER BROKER 405F —

REF.  
SIRE

## CMF ERNST POWER BROKER 405F

DOB: 9/6/18

REG: P43986389



HYALITE ON TARGET 936  
R LEADER 6964  
R MISS REVOLUTION 1009

GERBER ANODYNE 001A  
CMF 124B DOMINETTE 297D  
CMF 6U DOMINETTE 124B

CED	BW	WW	YW	DMI	SC	SCF	MILK	MG	CEM
10.6	-1.0	65	103	0.3	1.4	19.8	27	60	5.0
MCW	US	TS	CW	FAT	REA	MARB	BMI	BII	CHB
106	1.60	1.70	63	0.031	0.55	0.40	420	522	140





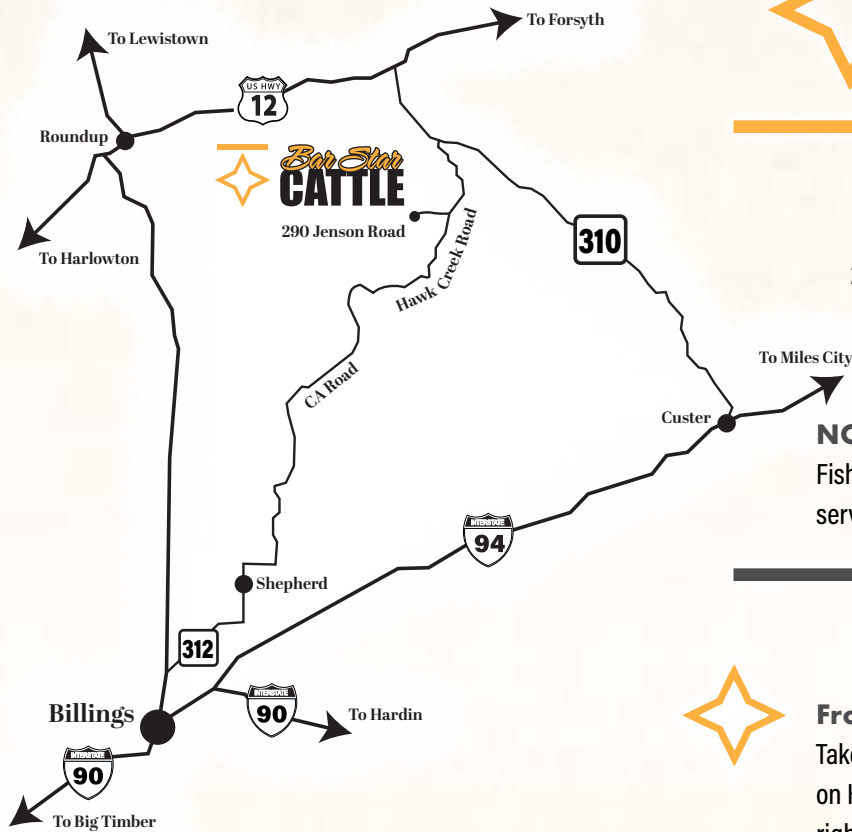


# Bar Star CATTLE

## RANCH LOCATION

290 Jensen Road  
Musselshell, MT 59059

**NOTE:** If you enter this in GPS do not let it take you to Fishel Creek Road. There is limited to no cell phone service.



### From Forsyth — 1 1/2 hour drive time

Take HWY 12 to Musselshell. From Musselshell go south on HWY 310 for 6.5 miles to Hawk Creek Road. Turn right on to Hawk Creek and follow for approx. 7 miles to Jensen Road. Turn at the Bar Star sign into our driveway.



### From Custer — 1 hour drive time

Take HWY 310 to Hawk Creek Road. Turn left to Hawk Creek and follow for approx. 7 miles to Jensen Road. Turn at the Bar Star sign into our driveway.



### From Billings — 1 1/2 hour drive time

Take HWY 87 to Roundup, then HWY 12 to Musselshell.



### From Musselshell —

Go south on HWY 310 for 6.5 miles to Hawk Creek Road. Turn right on to Hawk Creek and follow for approx. 7 miles to Jensen Road. Turn at the Bar Star sign into our driveway.





Chad & Stephanie Murnin  
290 Jensen Rd.  
Musselshell, MT 59059

# *Bar Star* **CATTLE**

## **2024 BULL SALE**

March 21, 2024 | 1:00 PM (MT)  
At the Ranch – Musselshell, Montana

Live Auction at the Ranch  
DV Auction Videos & Bidding



*BarStarCattle.com*