



BETWEEN
the BRANDS

PARTISOVER RANCH · INNISFAIL FARM

SUNDAY, MAY 5, 2024

2 PM EASTERN · MADISON, GEORGIA

the HEREFORD *offering*



CATTLE OF
TOMORROW *Today*

SATURDAY, MAY 4
VIEWING OF CATTLE ALL DAY
7:00 PM - COMPLIMENTARY DINNER

SUNDAY, MAY 5
VIEWING OF CATTLE ALL DAY
12:30 PM - COMPLIMENTARY LUNCH
2:00 PM EASTERN - SALE TIME!

WELCOME

Welcome to a new chapter at Innisfail. Between the Brands goes all the way back to two college buddies at the University of Georgia in the early 70s. Whitey and Randy have been friends for around 55 years. Neither one will admit exactly when they met for several reasons — in all seriousness we look forward to a new, exciting partnership with the Partisover crew. We thank Randy, Beth, Callie and the crew for partnering with us and together we invite you to come see some of the best Hereford and Angus genetics the Southeast has to offer.

The Hereford business has had some ups and downs in the last few years with the discovery of a couple genetic defects. Just when we cleaned up the first one, we got hit pretty hard with the second. The results of our DNA tests have pushed the quality of our offering pretty high as we sifted out all the carriers in our herd. We look forward to sharing these cattle with you.

All the news has not been bad on Innisfail Ln. The first groups of cattle through our new C-Lock equipment was fascinating. We fed these cattle on a low starch, high ryegrass baleage diet. Think less than 250 lbs of corn per ton on an as-fed basis. Sorting through all the data has been fun and educational. With so much information to sort through, trying to predict the impact of selection pressure is daunting. Make sure you take note of Lot 13. This bull really jumped through some hoops. While on test he consumed 24.68 lbs per day with an average daily gain of 4.61 lbs which gives him a 5.35 F:G. He ranked 3rd in RFI and 1st in FC and RADG. We used this bull on a big group of females and look forward to his progeny. We would like to partner with you on these cutting-edge genetics.

The NRSP is an awesome tool the Hereford Association provides to help us produce #cattleoftomorrowtoday. We have participated in this program almost annually for the last 10 plus years. The information we have collected over the years has been invaluable. This year was no different. Trademark flew through the test and boasted an average yield grade of 2 with 80% prime. That means every Trademark sired animal harvested received a carcass premium above the market.

These cattle add value on the rail which means our commercial customers make more dollars.

We will continue to challenge our cattle to perform in our environment so they will excel for you. We hope you can join us to preview the cattle on Saturday, May 4th, and attend the sale on May 5th.

Thanks for considering our genetics and please call us if we can provide more information.

sincerely,

WEYMAN HUNT, WHITEY HUNT AND BRECK DEBNAM

www.innisfailfarm.com

sale INFORMATION

LOCATION

INNISFAIL FARM

1780 Innisfail Ln, Madison, Georgia

SALE STAFF

Cody Lowderman, *Auctioneer*.....(309) 313-2171

Tommy Coley, *Hereford World*.....(815) 988-7051

Bobby Singleton, *Singleton Marketing & Consulting*(785) 221-3284

Noah Benedict, *Ring Staff and Sale Promotion*.....(740) 501-1508

SALE DAY PHONES

Weyman Hunt.....(706) 474-0536

Whitey Hunt (706) 342-5353

Breck Debnam (202) 308-4888

ACKNOWLEDGEMENTS

Dr. Tyson Strickland.....(706) 395-8080

Dugger Tent*Sale Tent*

John Reasor*Photography*

Melissa Grimmel Schaake..... *Catalog & Promotional Design*

Dogwood Genetics.....*Embryologist*

Wyatt Agar*President, AHA Board of Directors*

Bob Schaffer*Director, AHA Board of Directors*

Jim Coley*Director, AHA Board of Directors*

Bob Nelligan *President, GA Hereford Association*

TRUCKING

Todd Edwards.....(706) 844-3778

Wyatt Debnam.....(443) 289-0242

ONLINE BIDDING



HOTELS

HOLIDAY INN EXPRESS

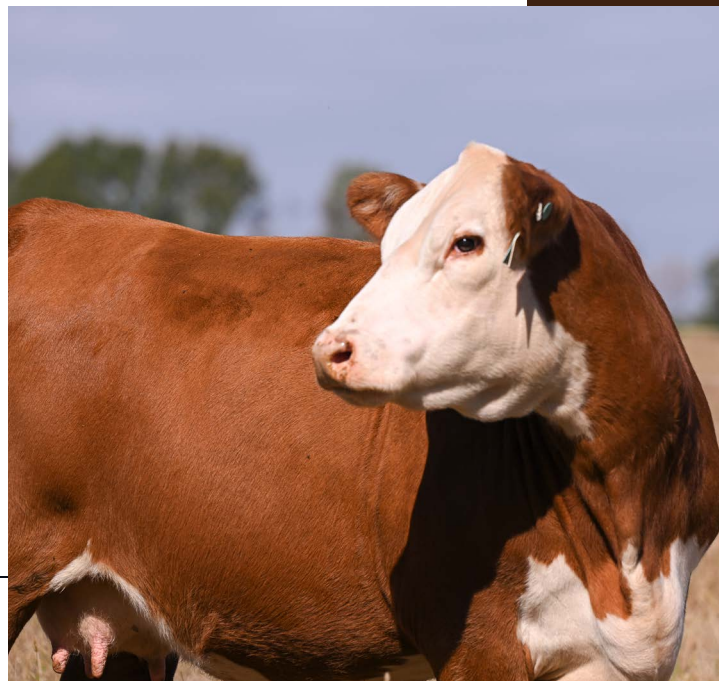
1041 Ramada Way, Madison, Georgia

(706) 342-9190

HAMPTON INN

2012 Eatonton Rd, Madison, Georgia

(706) 342-9003





A photograph of four Hereford cows standing in a grassy field. The cows are brown with white faces and chests. They are looking towards the camera. In the background, there are tall, thin trees under a clear blue sky. The text 'The HEREFORD OFFERING' is overlaid on the image in a white serif font.

The HEREFORD
OFFERING

bred HEIFERS

Our bred heifer lots have historically provided highlights within the sale offering. They offer fresh pedigrees, coupled with a complete set of phenotype data points through yearling collection time. This year, we bring you seven options that were sourced straight off the top of the group. Dig in, we think that you will enjoy studying them!

LOT 1A



The title of Lot One is not easily obtained. This year, we bring you the opportunity to buy an animal that checks all the boxes on her paperwork, and has jumped through the hoops with her phenotype collections. An animal whose both sides of parentage were raised at Innisfail and came out on top of their contemporaries. One of these sisters will go on to make an impact here in Madison, but we will let you pick first.

Two years ago, Jody Standley and the crew at Five Js bought an awesome Belle Air daughter out of the sale, I thought she was an absolute steal. Jody called after she had her C615 calf, and I knew that he saw the same things in 1857 that I did. She is moderate in stature, square built, incredibly functional in her kind, perfect uddered, and offers aggressive marbling with an outcross pedigree. We flushed her as a three year old, and this is the result.

These cattle are proof that top tier carcass attributes can be obtained in perfect harmony with a biological type that thrives in basic ranch settings. They are sensibly sized, soft middled, and perfect footed, with marbling EPDs that rank in the upper echelon of the Hereford breed. With both posting ratios of 117 or higher for IMF, those predictions are backed by phenomenal data.

lot 1a **INNISFAIL 1939 1857 2215 ET**

{DLF, HYF, IEF, MSUDF}
 POLLED • AHA# 44433965 • DOB: 9/30/22 • TATTOO: IF2215
 EFBEEF BR VALIDATED B413
INNISFAIL TRADEMARK 1939 ET
 INNISFAIL P230 T723
 EFBEEF TFL U208 TESTED X651 ET
 EFBEEF 4R THYRA Y865
 EF F745 FRANK P230
 INNISFAIL 235 R501 ET
 BR BELLE AIR 6011
INNISFAIL BELLE 024T 1857 ET
 JWR R20 LORI 024T
 BAR S LHF 028 240
 BR BELLE 4082 ET
 FELTONS LEGEND 242
 DKM P606 FANCY LADY R20

CE	BW	WW	YW	DMI	SC	SCF	MM	MG	MCE
1.8	1.4	51	76	0.4	1.7	17.7	20	46	3.5
64%	22%	73%	85%	69%	4%	41%	88%	86%	33%

MCW	UDDR	TEAT	CW	FAT	REA	MARB	BMI\$	BII\$	CHB\$
55	1.4	1.3	60	0.042	0.56	0.87	395	513	167
4%	7%	29%	86%	75%	26%	1%	29%	15%	3%

AI on 11/27/23 to INNISFAIL 1837 1580 2235 ET. PE to PYRAMID FUNCTION 0244 12/18/23-2/1/24. Confirmed safe to AI service.



choice lot

LOT 1B



INNISFAIL BELLE 024T 1857 ET
Dam of Lots 1A & 1B



INNISFAIL 1939 1857 2212 ET
Full brother to Lots 1A & 1B
Sold to Dale and Kim Dylong

lot 1b **INNISFAIL 1939 1857 2259 ET**

[DLF, HYF, IEF, MSUDF]

POLLED • AHA# 44434257 • DOB: 9/13/22 • TATTOO: IF2259

EFBEEF BR VALIDATED B413
INNISFAIL TRADEMARK 1939 ET
 INNISFAIL P230 T723

BR BELLE AIR 6011
INNISFAIL BELLE 024T 1857 ET
 JWR R20 LORI 024T

EFBEEF TFL U208 TESTED X651 ET
 EFBEEF 4R THYRA Y865
 EF F745 FRANK P230
 INNISFAIL 235 R501 ET

BAR S LHF 028 240
 BR BELLE 4082 ET
 FELTONS LEGEND 242
 DKM P606 FANCY LADY R20

CE	BW	WW	YW	DMI	SC	SCF	MM	MG	MCE
0.1	2.4	64	99	0.4	1	23.8	26	58	3.1
77%	42%	20%	27%	69%	50%	4%	60%	41%	38%
MCW	UDDR	TEAT	CW	FAT	REA	MARB	BMI\$	BIIS	CHBS
95	1.4	1.2	72	0.032	0.87	0.94	520	657	199
64%	7%	57%	43%	61%	2%	1%	1%	1%	1%

Homozygous Polled. AI on 11/27/23 to INNISFAIL 1837 1580 2235 ET. PE to PYRAMID FUNCTION 0244 12/18/23-2/1/24. Confirmed safe in calf.



LOT 2



INNISFAIL 1837 1580 2235 ET
Full brother to Lot 2



STONEGATE 028X 1580
Dam of Lot 2

Lot 2 **INNISFAIL 1837 1580 2231 ET**

{DLF,HYF,IEF,MSUDF}

POLLED • AHA# 44434211 • DOB: 9/16/22 • TATTOO: IF2231

NJW 792 Z311 ENDURE 173D ET
INNISFAIL ENERGY 4021 1837 ET
INNISFAIL 723 U208 4021 ET

KCF BENNETT ENCORE Z311 ET
BW 91H 100W RITA 79Z ET
EFBEEF TFL U208 TESTED X651 ET
INNISFAIL P230 T723

CHURCHILL SENSATION 028X
STONEGATE 028X 1580
STONEGATE 3027 1365

UPS DOMINO 3027
CHURCHILL LADY 7202T ET
UPS DOMINO 3027
STONEGATE 4R 1165

CE	BW	WW	YW	DMI	SC	SCF	MM	MG	MCE
11.8	0.5	73	112	0.6	1.8	28.6	38	75	4.8
4%	11%	3%	7%	84%	2%	1%	3%	2%	19%
MCW	UDDR	TEAT	CW	FAT	REA	MARB	BMI\$	BI1\$	CHB\$
92	1.5	1.4	92	0.082	0.74	0.48	576	697	174
58%	2%	11%	4%	98%	7%	3%	1%	1%	2%



Alright, here is the deal, we are anxiously awaiting the DB results on Lot 2. If she is clean, then we will offer you ½ interest in the female. If she is dirty, we are going to pull her from the sale. She has the potential to be the one that takes the next step for the 1580 cow family, and we would love to have a partner on the journey. Her dam, 1580, brings in 6 WR@102.8. She has 4 daughters raising 5 calves for a 108.2 WR. We have never before offered a direct 1580 daughter to the public. This is the **ONLY** homozygous polled full sister to 2235- the highest BMI bull in the breed.

2231 embodies everything that we are after. She couples a moderate stature with true density and substance. Lot 2 is both ideal in her structure and has the “What’s that one?!” presence and eye appeal. Her EPD profile is one of the more elite ones in the breed.

Homozygous Polled, DBP.

Offering ½ interest. Terms negotiable.

PE to INNISFAIL TM 839 2247 ET 12/18/23-2/1/24. Confirmed safe in calf.



INNISFAIL 1939 525C 2227 ET
Full brother to Lot 3
Sold to the Tim Rollins Family



INNISFAIL 755T 525C
Dam of Lot 3

Lot 3 INNISFAIL 525C 1939 2203 ET

{DLF,HYF,IEF,MSUDF}
 POLLED • AHA# 44433948 • DOB: 9/30/22 • TATTOO: IF2203
 EFBEEF BR VALIDATED B413
INNISFAIL TRADEMARK 1939 ET
 INNISFAIL P230 T723
 TH 223 711 VICTOR 755T
INNISFAIL 755T 525C
 INNISFAIL U620 090X
 EFBEEF TFL U208 TESTED X651 ET
 EFBEEF 4R THYRA Y865
 EF F745 FRANK P230
 INNISFAIL 235 R501 ET
 DRF JWR PRINCE VICTOR 711
 KBCR 19D DOMINETTE 223
 KCF BENNETT R413 U620
 INNISFAIL 434 U852

CE	BW	WW	YW	DMI	SC	SCF	MM	MG	MCE
0.7	2.1	70	109	0.3	1.8	13.3	28	63	3.8
73%	35%	5%	10%	47%	2%	83%	47%	19%	29%

MCW	UDDR	TEAT	CW	FAT	REA	MARB	BMI\$	BII\$	CHB\$
99	1.6	1.4	82	0.062	0.69	0.58	356	471	178
72%	1%	11%	14%	91%	11%	2%	53%	31%	2%



If you like to dig into cow families with top tier production records, then go ahead and circle Lot 2. Her dam, 525, is a second-generation Dam of Distinction who brings in 5@110 WR while never taking a step back in calving interval. Their maternal grand dam sports 6@115.7 WR. Anymore, this is the kind of stuff that gets me really fired up. In a world of accelerated genetic progress, it is so good to see these figures line up with productivity that can be easily identified in a pasture setting.

2203 is common sense type cattle: performance oriented, big bodied, and good structured. 2203 offers added mass and dimension, while sporting ratios of 110 for REA and 127 for IMF.

Homozygous Polled.

AI on 11/27/23 to INNISFAIL 1837 1580 2235 ET. PE to PYRAMID FUNCTION 0244 12/18/23-2/1/24. Confirmed safe to AI service.

LOT 4



INNISFAIL Z311 505C
Dam of Lot 4

lot 4 **INNISFAIL 1838 209K**

POLLED • AHA# 44431688 • DOB: 8/30/22 • TATTOO: 1F209K

NJW 792 Z311 ENDURE 173D ET
INNISFAIL ENDORSE 4021 1838 ET
 INNISFAIL 723 U208 4021 ET

KCF BENNETT ENCORE Z311 ET
INNISFAIL Z311 505C
 INNISFAIL 242 9146 8322 ET

KCF BENNETT ENCORE Z311 ET
 BW 91H 100W RITA 79Z ET
 EF BEEF TFL U208 TESTED X651 ET
 INNISFAIL P230 T723

SCHU-LAR ON TARGET 22S
 KCF MISS REVOLUTION X338 ET
 FELTONS LEGEND 242
 BTF 5015 9146

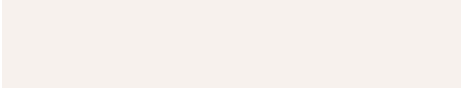
CE	BW	WW	YW	DMI	SC	SCF	MM	MG	MCE
6	2	69	111	0.5	1.5	15.4	25	60	4
26%	33%	8%	7%	82%	9%	65%	64%	32%	27%
MCW	UDDR	TEAT	CW	FAT	REA	MARB	BMI\$	BI1\$	CHB\$
104	1.3	1.3	91	0.112	0.59	0.74	391	518	195
82%	23%	29%	4%	100%	22%	1%	31%	14%	1%

This fall, Endorse saw heavier use on Innisfail Lane than ever before. Cattle like this are the reason why: performance driven, good structured, with aggressive marbling and added pigment. He came out of the NRSP with high accolades for feed conversion. 209, herself, posted a marbling ratio of 114.2. This is extremely aggressive when you take into account her contemporaries.

505, Lot 4's mother, is one of the more unique mature cows on the ranch. She sports 6 WW@101.6, 6 YW@100.3, and 6 IMF@114.2. When you trace her maternal lineage, she goes back to some great Southeast grass cattle families that were developed in the Trask program.

AI on 11/27/23 to KJ IF 45C CONFIDENCE 609K ET. PE to INNISFAIL TM 839 2247 ET 12/18/23-2/1/24. Confirmed safe to AI service.

LOT 5



INNISFAIL 1943 130J
Maternal sister to Lot 5



LOT 6



We are overwhelmed with excitement to calve this first set of Function daughters. Thus far, he has been a great outcross complement to our cow base. Our vision of how these cattle should last in production is solidified with a 29.8 SCF, 544 BMI, and moderate MCW. We hand selected our two favorite 0244 daughters to let you in on the excitement, and share a choice with you.

These females mirror Function's kind so well. They are densely featured, square built cattle with phenomenal foot shape, and natural presence. 231 is a maternal sister to the high selling bred heifer in last year's female sale- with a \$20,000 valuation by 5 J's and NC State. Her mother is a very "Bonsma type" female with a tremendous production record bringing in 2 WR@119. 234 is the longer bodied, more extended option. She shares a maternal grand dam with the Lot 1 females- the great JWR R20 LORI 024T cow.

Homozygous Polled.

lot **5** **INNISFAIL FUNCTION 231K**

{DLF,HYF,IEF,MSUDF}
POLLED • AHA# 44431702 • DOB: 10/14/22 • TATTOO: IF231K

LCX PERFECTO 11B ET
PYRAMID FUNCTION 0244
FHF 3027 VICTRA 115D

NJW 98S R117 RIBEVE 88X ET
WLL ZOEY 3Z
UPS DOMINO 3027
FHF 88X VICTRA 207B ET

NJW 108Y Z311 ENCORE 237C ET
INNISFAIL 237C 925G
INNISFAIL X651 907 7104 ET

KCF BENNETT ENCORE Z311 ET
NJW 94R 100W MONTANA 108Y
EFBEEF TFL U208 TESTED X651 ET
INNISFAIL M326 907W

CE	BW	WW	YW	DMI	SC	SCF	MM	MG	MCE
10.3	0.1	62	96	0.3	0.7	22.7	37	68	10.4
7%	8%	28%	36%	57%	81%	7%	6%	8%	1%
MCW	UDDR	TEAT	CW	FAT	REA	MARB	BMI\$	BI\$	CHB\$
52	1.2	1.4	82	0.012	0.63	0.07	457	535	130
4%	52%	11%	14%	30%	17%	66%	7%	10%	26%

AI on 11/27/23 to INNISFAIL 1837 1580 2235 ET. PE to INNISFAIL TM 839 2247 ET 12/18/23-2/1/24. Confirmed safe to AI service.



lot **6** **INNISFAIL FUNCTION 234K**

{DLF,HYF,IEF,MSUDF}
POLLED • AHA# 44431713 • DOB: 10/17/22 • TATTOO: IF234K

LCX PERFECTO 11B ET
PYRAMID FUNCTION 0244
FHF 3027 VICTRA 115D

NJW 98S R117 RIBEVE 88X ET
WLL ZOEY 3Z
UPS DOMINO 3027
FHF 88X VICTRA 207B ET

INNISFAIL WHR X651/723 4013 ET
INNISFAIL 024T 4013 1949 ET
JWR R20 LORI 024T

EFBEEF TFL U208 TESTED X651 ET
INNISFAIL P230 T723
FELTONS LEGEND 242
DKM P606 FANCY LADY R20

CE	BW	WW	YW	DMI	SC	SCF	MM	MG	MCE
6.9	1.8	72	107	0.4	1.2	31.4	39	75	6.3
20%	29%	4%	12%	70%	29%	1%	3%	1%	9%
MCW	UDDR	TEAT	CW	FAT	REA	MARB	BMI\$	BI\$	CHB\$
61	1.5	1.5	75	0.022	0.41	0.42	592	712	149
7%	2%	3%	34%	45%	57%	5%	1%	1%	9%

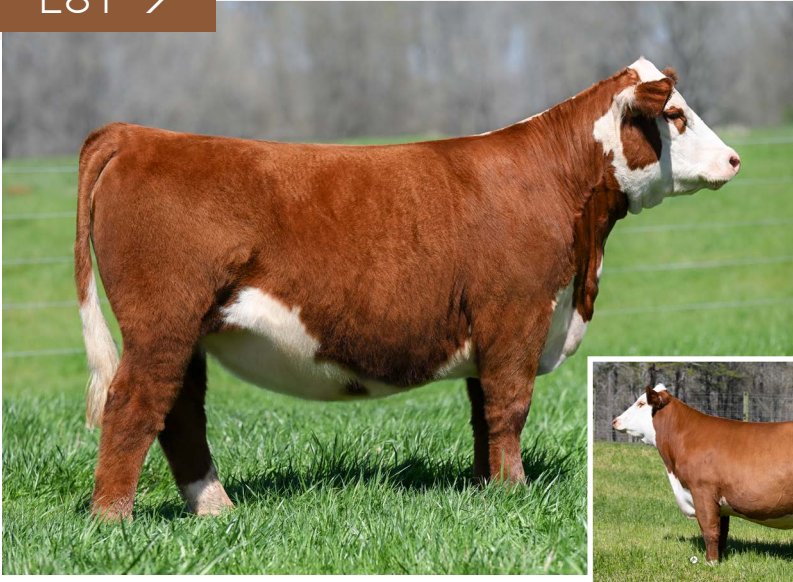
AI on 11/27/23 to INNISFAIL 1837 1580 2235 ET. PE to INNISFAIL TM 839 2247 ET 12/18/23-2/1/24. Confirmed safe in calf.



open ET HEIFER CALVES

The open ET heifer calf lots give you a perspective of what our 2023 calf crop looks like. This is the first time for each mating represented. There is nothing like the excitement of what is to come, and that is exactly how we feel about these lots. Andy Smith, a good friend and longtime customer, brought us two calves out of past high seller, 871e. They are high quality and have our full endorsement.

LOT 7



What a great way to introduce a new and exciting cow family at Innisfail! 2301's mother, 004, was as competitive of a show heifer as we have exhibited. We feel her true value lies far beyond that in production. She is a unique tool to inject true performance and massive body shape. She folds in the 907 donor at Jensen's, a cow that has proved to be a generator of tremendous quality. Trademark was a perfect compliment to 004: to the extent we did her back that way and implanted 17 of this mating this past fall. 2301 represents the kind of cattle we all want more of. She is great structured, huge bodied, with added "look." Her genomic figures are balanced and progressive. Homozygous Polled. Sells open and ready to breed to the bull of your choice.

INNISFAIL 839E 907E 004H ET
Dam of Lot 7

lot **7** **INNISFAIL TM 004H 230I ET**

{DLF,HYF,IEF,MSUDF,MDF,DBF}
POLLED • AHA# 44498088 • DOB: 4/24/23 • TATTOO: IF2301

EFBEEF BR VALIDATED B413
INNISFAIL TRADEMARK 1939 ET
INNISFAIL P230 T723

EFBEEF TFL U208 TESTED X651 ET
EFBEEF 4R THYRA V865
EF F745 FRANK P230
INNISFAIL 235 R501 ET

R LEADER 6964
KJ BJ 526Z TERRI 310C
BR NITRO AVENTUS 3116 ET
BBH 743 ADORA 339A

KJ 310C LEADER 839E
INNISFAIL 839E 907E 004H ET
KJ BJ 339A CHARDONNAY 907E ET

CE	BW	WW	YW	DMI	SC	SCF	MM	MG	MCE
1.5	2.2	73	113	0.6	1.1	19.4	26	63	1.5
66%	37%	3%	6%	88%	39%	26%	60%	21%	59%
MCW	UDDR	TEAT	CW	FAT	REA	MARB	BMI\$	BIIS	CHBS
112	1.4	1.2	83	-0.008	0.77	0.69	451	578	189
91%	7%	57%	13%	7%	6%	1%	8%	4%	1%



lot **8** **INNISFAIL 1939 955 2373 ET**

POLLED • AHA# 44530272 • DOB: 9/20/23 • TATTOO: IF2373

EFBEEF BR VALIDATED B413
INNISFAIL TRADEMARK 1939 ET
INNISFAIL P230 T723

EFBEEF TFL U208 TESTED X651 ET
EFBEEF 4R THYRA V865
EF F745 FRANK P230
INNISFAIL 235 R501 ET

TFR KU ROLL THE DICE 1326
JR 955 ET
CH MS REBA 7016 ET

STAR TCF LOCK-N-LOAD 300W ET
LH LANGFORD LADY 0253 ET
BR MOLER ET
CH MISS OK GOLD 0053

CE	BW	WW	YW	DMI	SC	SCF	MM	MG	MCE
-0.8	2.9	68	109	0.5	1.1	13	27	61	1.9
83%	54%	10%	10%	77%	39%	85%	49%	25%	54%
MCW	UDDR	TEAT	CW	FAT	REA	MARB	BMI\$	BIIS	CHBS
118	1.3	1.2	83	0.002	0.83	0.57	356	465	181
95%	23%	57%	12%	15%	3%	2%	54%	34%	1%

LOT 8



I will be real honest, I fought this mating tooth and nail. Weyman and Kacie were persistent that it needed to happen. When we ran over to a Co-Op herd to scout for ET calves for the sale- let's just say that I was wrong, and they let me know. 2373 is high phenotype cattle, with a progressive numerical profile. 955, 2373's dam, is such a unique animal. She has impacted an extremely wide variety of breeders on cow tours. She has never missed an AI service, averages 18 embryos per conventional flush, and will flat raise a calf. The only issue she ever causes is not being able to fit down the chute. GE-EPDs available sale day.

JR 955 ET
Dam of Lot 8

LOT 9



When we first met Andy Smith four years ago, I knew it would develop into a good relationship. He is extremely passionate about making better Hereford cattle and is a strong advocate of the Hereford breed in North Carolina. He has been a loyal supporter of Innisfail farm, and we are so excited to watch his program develop.

This one is just my kind- extremely bold and dense, moderate in stature, loose structured, with undeniable natural presence. She looks like one that will raise herd bulls. From the small sample size that I have seen this spring, Character is going to work extremely well when it comes to making no nonsense beef cattle.
Homozygous Polled.

KJ 482Y LEADING LADY 871E ET
Dam of Lots 9 & 10

lot 9 **PJF IF VIRTUE 871E 83 ET**

{DLF,HYF,IEF,MSUDF,MDF,DBF}
POLLED • AHA# 44516431 • DOB: 9/30/23 • TATTOO: IF83
NJW 79Z Z311 ENDURE 173D ET
NJW 11B 173D CHARACTER 178J ET
NJW 79Z 10W RITA 11B
R LEADER 6964
KJ 482Y LEADING LADY 871E ET
KJ 274S ROXY 482Y ET
KCF BENNETT ENCORE Z311 ET
BW 91H 100W RITA 79Z ET
LJR 023R WHITMORE 10W
BW 91H 100W RITA 79Z ET
HYALITE ON TARGET 936
R MISS REVOLUTION 1009
KJ HVH 33N REDEEM 485T ET
KJ 2054 MISTY 274S ET

CE	BW	WW	YW	DMI	SC	SCF	MM	MG	MCE
0.4	3.6	66	104	0.3	0.6	20.6	30	64	0.9
75%	70%	13%	17%	59%	88%	17%	29%	18%	66%
MCW	UDDR	TEAT	CW	FAT	REA	MARB	BMI\$	BIIS	CHB\$
113	1.1	1.1	70	0.022	0.49	0.02	414	493	107
92%	80%	82%	54%	45%	39%	82%	20%	22%	74%



lot 10 **PJF IF FOREVER MY GIRL 871E 81 ET**

{DLF,HYF,IEF,MSUDF,MDF,DBF}
POLLED • AHA# 44516416 • DOB: 9/28/23 • TATTOO: IF81
SHF RIB EYE M326 R117
NJW 98S R117 RIBEYE 88X ET
NJW 9126J DEW DOMINO 98S
KCF BENNETT 3008 M326
HVH MISS HUDSON 83K 8M
CL 1 DOMINO 9126J 1ET
NJW 57G 74G DEW 5M
R LEADER 6964
KJ 482Y LEADING LADY 871E ET
KJ 274S ROXY 482Y ET
HYALITE ON TARGET 936
R MISS REVOLUTION 1009
KJ HVH 33N REDEEM 485T ET
KJ 2054 MISTY 274S ET

CE	BW	WW	YW	DMI	SC	SCF	MM	MG	MCE
3.1	2.8	53	81	0.1	1	21.5	30	57	2.8
52%	52%	66%	77%	22%	50%	12%	31%	46%	42%
MCW	UDDR	TEAT	CW	FAT	REA	MARB	BMI\$	BIIS	CHB\$
74	1.4	1.5	48	0.012	0.28	0.32	418	505	109
20%	7%	3%	98%	30%	81%	10%	19%	17%	70%



LOT 10



I love the maternal direction Andy has taken when mating 871e. We all know, and love, the 88X cattle in production. After seeing the full siblings to this heifer that we sold in 2022, this was his first mating out of the gate with Leading Lady. Lot 10 has full brothers working at some great operations across the east coast, including Silo Creek Farm in MD.

In my opinion, this is the best 88X x 871e female yet. She offers tremendous stretch and performance. Lot 10 is big hipped, soft hind legged, and still looks like a female. Here is a genetic package that you can have faith will go to work, we think you can get creative on what direction you take her in the future.

INNISFAIL 1943 130J
*Full brother of Lot 10
Sold to Silo Creek Farm*

LOT 11



INNISFAIL C775 930G
Maternal sister to Lots 11 & 12
Sold to Maske Ranch



LOT 12



Do you remember that MDC 3-year-old cow we sold last year? I think I fielded as many phone calls on her and her Harvest heifer calf as anything else. Here is a pair of maternal sisters, and guess what- they are MDF. When you walked through the barns at the 2022 Cattleman's Congress, it was undeniable that Longest Yard was one of the cool kids in town. He combined muscle shape and "look" with some progressive paperwork. This was a very complimentary mating to 720e, a great uddered Z311 daughter with some sporty carcass data.

This pair of heifer calves are extremely functional in their kind- big bodied, and loose structured with some genuine width and dimension. Study the two generation pedigree- there are some great cows stacked in this pedigree. These cattle will be wise long term investments.

GE-EPDs available sale day.

Lot 11 INNISFAIL YARD 720E 2313 ET

POLLED • AHA# 44530150 • DOB: 9/20/23 • TATTOO: IF2313

NJW LONG HAUL 36E ET CHURCHILL SENSATION 028X
EF MF LONGEST YARD 19Z 228J ET NJW 79Z 10W RITA 11B
AH MS 25L RUMBLER 19Z BAR JZ RUMBLE 525X
AH JDH MS 25L WRANGLER 34X ET

KCF BENNETT ENCORE Z311 ET SCHU-LAR ON TARGET 22S
INNISFAIL Z311 723 720E ET KCF MISS REVOLUTION X338 ET
INNISFAIL P230 T723 EF F745 FRANK P230
INNISFAIL 235 R501 ET

CE	BW	WW	YW	DMI	SC	SCF	MM	MG	MCE
3.9	1.8	70	115	0.6	0.9	21.3	30	65	3.5
44%	29%	5%	5%	84%	61%	13%	32%	13%	33%

MCW	UDDR	TEAT	CW	FAT	REA	MARB	BMI\$	BII\$	CHB\$
113	1.4	1.4	81	0.012	0.43	0.54	462	580	173
92%	7%	11%	16%	30%	52%	2%	6%	3%	2%

Lot 12 INNISFAIL YARD 720E 2315 ET

POLLED • AHA# 44530151 • DOB: 9/19/23 • TATTOO: IF2315

NJW LONG HAUL 36E ET CHURCHILL SENSATION 028X
EF MF LONGEST YARD 19Z 228J ET NJW 79Z 10W RITA 11B
AH MS 25L RUMBLER 19Z BAR JZ RUMBLE 525X
AH JDH MS 25L WRANGLER 34X ET

KCF BENNETT ENCORE Z311 ET SCHU-LAR ON TARGET 22S
INNISFAIL Z311 723 720E ET KCF MISS REVOLUTION X338 ET
INNISFAIL P230 T723 EF F745 FRANK P230
INNISFAIL 235 R501 ET

CE	BW	WW	YW	DMI	SC	SCF	MM	MG	MCE
3.9	1.8	70	115	0.6	0.9	21.3	30	65	3.5
44%	29%	5%	5%	84%	61%	13%	32%	13%	33%

MCW	UDDR	TEAT	CW	FAT	REA	MARB	BMI\$	BII\$	CHB\$
113	1.4	1.4	81	0.012	0.43	0.54	462	580	173
92%	7%	11%	16%	30%	52%	2%	6%	3%	2%

The BULLS

This is not a bull sale, however, it is our one annual chance to display and offer up what we believe to be our most exciting, impactful, herd sire prospects. Each one of these cattle are outliers within their field. They have either been used, or plan to be used, within our program. A herd bull investment results in as much immediate genetic change as anything else you will do. We take this seriously, and bring you the best we have to offer. Selling full possession on all bulls and 2/3 semen interest.

LOT 13



HIGH CONVERSION BULL
2023

Lot 13

INNISFAIL HARVEST 23K

[DLF, HYF, IEF, MSUDF]

POLLED • AHA# 44431763 • DOB: 9/11/22 • TATTOO: IF23K

SHF DAYBREAK Y02 D287 ET
SHF HARVEST D287 H033 ET
SHF TIME 001A D81

SHF YORK 19H Y02
SHF MISS M326 T08 ET
GERBER ANODYNE 001A
SHF TIME 42X A140

SHF YORK 19H Y02
INNISFAIL 723 YORK 5007 ET
INNISFAIL P230 T723

MSU MF HUDSON 19H
LOEWEN MISS P20 10W
EF F745 FRANK P230
INNISFAIL 235 R501 ET

CE	BW	WW	YW	DMI	SC	SCF	MM	MG	MCE
5.8	1.6	69	119	0.2	1.3	14.8	27	62	3.4
28%	25%	8%	3%	36%	20%	71%	49%	23%	34%

MCW	UDDR	TEAT	CW	FAT	REA	MARB	BMI\$	BII\$	CHB\$
103	1.3	1.3	86	0.072	0.49	0.45	374	481	178
79%	23%	29%	8%	96%	39%	4%	42%	26%	2%



In a world of rising input costs, close attention to margin has never held more importance. This was the inaugural year for collecting individual feed intake data on Innisfail Lane. The day the test was finalized, I turned 23K out on our largest group of cows. Lot 13 was the highest conversion bull of the group, while still ranking third for RFI. He converted 24.73 pounds of a high fiber, forage based, ration into a 4.61 average daily gain. If you are in the business of creating beef cattle that have the genetic ability to do more with less, here is a great opportunity.

23K offers more than a unique data set- he is a real beef bull: long bodied, performance driven, heavy muscled, and very deep heeled. The Harvest cattle are common sense stock that our commercial clientele resonated well with. His mother is a problem free, 9 year old, York x T723 that is extra functional and never takes a step back in calving interval. Scurred.

LOT 14



KJ 482Y LEADING LADY 871E ET
Dam of Lot 14

Lot 14 Pjf IF CLASS ACT I78J 78 ET

{DLF,HYF,IEF,MSUDF,MDF,DBF}

POLLED • AHA# 44516392 • DOB: 9/22/23 • TATTOO: IF78

NJW 79Z Z31I ENDURE 173D ET
NJW 11B 173D CHARACTER 178J ET
 NJW 79Z 10W RITA 11B

R LEADER 6964
KJ 482Y LEADING LADY 871E ET
 KJ 274S ROXY 482Y ET

KCF BENNETT ENCORE Z31I ET
 BW 91H 100W RITA 79Z ET
 LJR 023R WHITMORE 10W
 BW 91H 100W RITA 79Z ET
 HVALITE ON TARGET 936
 R MISS REVOLUTION 1009
 KJ HVH 33N REDEEM 485T ET
 KJ 2054 MISTY 274S ET

CE	BW	WW	YW	DMI	SC	SCF	MM	MG	MCE
3.8	4	71	110	0.3	1.2	23.6	28	64	0.7
45%	78%	5%	9%	59%	29%	5%	44%	17%	69%
MCW	UDDR	TEAT	CW	FAT	REA	MARB	BMI\$	BI\$	CHB\$
115	1.2	1.2	89	0.032	0.81	-0.02	482	564	131
94%	52%	57%	5%	61%	4%	91%	4%	5%	25%



The best part of this business is watching your customers achieve their goals. Class Act took 3 steps off of Andy's trailer and my jaw hit the ground. Lot 14 has the wow factor to stop you in your tracks, coupled with the practicality that we need to demand from beef cattle in 2024. He is backed by a cow that has proven to be a generator of high quality, in demand, livestock. On the topside, Character stacks in one of the most influential mother cows of the current generation of Hereford cattle (Rita 79Z)- front and center.

At first glance, here is a bull that is unparalleled in his balance. His neck ties in high, his body shape is incredible, and his build is square. Dig in closer, and this bull is built right: big, square feet, with extra cushion to his angles. This ground level build allows for him to collect himself with undeniable natural presence. Congratulations Andy, you raised an absolute hammer. We are proud to help you market this unique animal.

Homozygous Polled.



INNISFAIL 4013 124J
Dam of Lot 15

INNISFAIL 100W 839F
Maternal Granddam of Lot 15

lot 15 INNISFAIL CONJUNCTION 1L

[DLF, HYF, IEF, MSUDF, MDF, DBF]
POLLED • AHA# 44510396 • DOB: 8/10/23 • TATTOO: IF1L

LCX PERFECTO 11B ET
PYRAMID FUNCTION 0244
FHF 3027 VICTRA 115D

NJW 98S R117 RIBEYE 88X ET
WLL ZOEY 3Z
UPS DOMINO 3027
FHF 88X VICTRA 207B ET

INNISFAIL WHR X651/723 4013 ET
INNISFAIL 4013 124J
INNISFAIL 100W 839F

EFBEEF TFL U208 TESTED X651 ET
INNISFAIL P230 T723
NJW 73S M326 TRUST 100W ET
STONEGATE 028X 1580

CE	BW	WW	YW	DMI	SC	SCF	MM	MG	MCE
7.6	2.5	68	103	0.6	1.2	36.1	43	77	4.4
16%	44%	8%	18%	84%	29%	0%	1%	1%	23%
MCW	UDDR	TEAT	CW	FAT	REA	MARB	BMI\$	BII\$	CHB\$
41	1.5	1.6	83	0.062	0.61	0.29	656	766	141
2%	2%	1%	13%	91%	19%	13%	1%	1%	14%



1L successfully achieves all of my personal goals for Innisfail. Simply put, he is a fault free beef bull that offers genetic progress for the most economically relevant traits in today's beef cattle industry. When Tommy Maples, a long time breeder of phenomenal cattle in Alabama, called me about how happy he was with the pair of Function sons

I dropped off for him this year- I knew that the 0244 bulls were going to suit our commercial clientele perfectly. This is Function's best son to date. As for the bottom side of his pedigree, 124 will be a highly impactful 1580 descent for us, Day Ridge, and P&J Farms. Remember her number, this will not be the last you hear of her.

Conjunction's basic build and structure is ideal. This is a heavy muscled bull that has the kind of body shape that works in the high-moisture forages of the subtropics. 1L charts a progressive CW of 82, while maintaining an extra moderate MCW of 44. He is a bull that we look forward to using as an AI sire in the future, and would love to work with his new owner in making sure he participates in a feed efficiency trial this year.

Lot 15 is the 3rd highest Baldy Maternal Index bull in the Hereford Breed, and the highest Homozygous Polled, DBF, option.

genetic OFFERING

An opportunity to buy into the future of the program here at Innisfail Farm. The following three lots represent where we are headed. Fresh, exciting genetics who are backed by proof and accurate data collection.

LOT 16



#16 STELPFUG FINAL PRINT 3568 ET

{DLF, HYF, IEF, MSUDF, MDF}
 POLLED • AHA# 44496562 • DOB: 1/29/23 • TATTOO: IF3568

BOYD 31Z BLUEPRINT 6153
RST FINAL PRINT 0016
 RST MS X651 TESTED 8032

R LEADER 6964
 NJW 91H 100W RITA 31Z ET
 EFBEEF TFL U208 TESTED X651 ET
 RST MS 0124 TIMESAWASTIN 6094

KCF BENNETT RELEVANT D67 ET
BR RELEVANT D67 7098 9226
 BR VALIDATED B413 6035 7098

KCF BENNETT ENCORE Z311 ET
 KCF MISS 3027 Z44 ET
 EFBEEF BR VALIDATED B413
 BR BENNETT 4R Y428 2101 6035

CE	BW	WW	YW	DMI	SC	SCF	MM	MG	MCE
7	-0.4	73	110	0.6	1.8	23.5	42	79	10.3
20%	6%	3%	8%	86%	2%	5%	1%	1%	1%

MCW	UDDR	TEAT	CW	FAT	REA	MARB	BMI\$	BIIS\$	CHBS\$
82	1.3	1.3	98	0.092	0.94	0.46	509	625	178
34%	23%	29%	1%	99%	1%	3%	2%	1%	2%

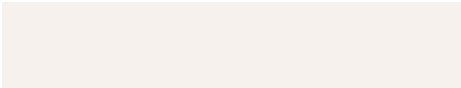


- LOT 16A: 10 UNITS
- LOT 16B: 10 UNITS
- LOT 16C: 10 UNITS
- LOT 16D: 10 UNITS
- LOT 16E: 10 UNITS

3568 is our newest herd sire acquisition, and one that we are tremendously excited about. The Final Print progeny have found broad acceptance nationwide, and we set out this year to find a homozygous polled son, with added marbling, in a phenotypic package that we can all appreciate. His mother is a direct daughter of 7098, arguably one of the most impactful cows in the Hereford breed. We have been looking for a way to bring this cow into our program, and 3568 presented a perfect opportunity.

This bull brings high CED to the table while maintaining the muscle shape that our grass roots commercial bull buyers demand. He is striking in his outline, and his skeletal build checks out. 3568 will leave a lasting impact on Innisfail Farm, and this is a great opportunity to get on board early!

Homozygous Polled.



INNISFAIL TRADE SECRET 14J

Full brother to Lot 17 pregnancy



INNISFAIL C615 824F

Dam of Lot 17 pregnancy



Lot 17

HEIFER CALF PREGNANCY

EFBEEF BR VALIDATED B413

INNISFAIL TRADEMARK 1939 ET

INNISFAIL P230 T723

EFBEEF X51 RESOLUTE C615
INNISFAIL C615 824F
 INNISFAIL REVOLUTION A306

Your chance at a full sister to Trade Secret! We hope it takes one glance at the first few split pairs to believe in the Trademark x C615 mating.

824 made many friends at the ranch this winter: she is moderate, bold, and dense with an ultra square build. There is a ¾ sister to this pregnancy that goes by tag 015, she is one of my favorite 4013 daughters and played a major role in both the decision to flush 824 and use Trade Secret. 824 sports 2 IMF@125.5. Due September 15th.

Lot 18

HEIFER CALF PREGNANCY

JDH VICTOR 719T 33Z ET

AH JDH 34X VICTOR 33Z 2E ET

AH JDH MS 25L WRANGLER 34X ET

INNISFAIL WHR X651/723 4013 ET

INNISFAIL 4013 723E
 INNISFAIL 723 028X 4014 ET

This was a logical mating for us. 2E is the full brother to 45C at Rausch Herefords - he sports 178 WR@101.5, 27 REA@105.2, 27 IMF@115.2, and has 23 daughters raising 48 calves for a 103.8 nursing ratio. 2E sired the high selling female in the 2023 Rausch sale. Jacob says he will make them moderate and wide. 723e is a pillar of our donor battery, and a model Hereford beef cow. If you keep flipping through the split pairs you can read a whole lot more about her...
 Due September 15th.

AH JDH 34X VICTOR 33Z 2E ET

Sire of Lot 18 pregnancy



INNISFAIL 4013 723E

Dam of Lot 18 pregnancy



split PAIRS

I will be real honest, this is the chapter of the sale that always tugs at my heartstrings the most. We feel comfortable and confident in these cattle. Selling them represents offering up a piece of the factory. They are essential members of our program. You have the opportunity to acquire mother cows in production, and heifer calves that will mature into females who mirror the quality of their dams. This has historically been the bread and butter of the offering. These are the most consistent, highest quality, set of 10 fall pairs that we have ever offered.

LOT 19



If you came to buy the coolest looking, most chisel fronted, dark red animal in the sale- then there are probably some other lots that might suit you better. However, if you opened this book looking to invest in genetics that: get pregnant, stick around, don't cause issues, and offer the indices that suggest high profit potential to the industry- star, circle, and highlight Lot 19. The C615 daughters have worked so well here, and the heart of our cow herd has become deeply rooted in his progeny. Her mother is 4014 (the horned cow), an 028x out of T723. She will turn 10 this fall and has aged like fine wine. She hustles hard and never lets me down, regardless of how she is mated.

132 is big bodied, loose structured, and great footed. Her udder looks just like her mother's, so I would be willing to bet that it will hold up. This is a young cow, with a proven pedigree, that shouldn't be leaving.

AI on 12/10/23 to INNISFAIL ENDORSE 4021 1838 ET.
PE to INNISFAIL 1837 1580 2235 ET 12/26/23-2/1/24.
Confirmed safe to AI service.



LOT 19A

The highest marbling animal on the Hereford side of Between the Brands. Her value goes far beyond a 3 digit figure for IMF: she is a performance leader of the calves on first calf heifers, is correct in her basic build, and offers strong genomic indicators of maternal excellence. The next generation of #HerefordsThatMarble is here, and they are exciting. Lot 19a is high quality livestock that brings some major investment potential to those breeders focused on tomorrow's beef business.



INNISFAIL 723 028X 4014 ET
Dam of Lot 19

Lot 19

INNISFAIL C615 132J

{DLF, HYF, IEF, MSUDF}
POLLED • AHA# 44333492 • DOB: 9/13/21 • TATTOO: IF132J

KCF BENNETT REVOLUTION X51
EFBEEF X51 RESOLUTE C615
EFBEEF U208 MABEL X647 ET

CHURCHILL SENSATION 028X
INNISFAIL 723 028X 4014 ET
INNISFAIL P230 T723

MSU TCF REVOLUTION 4R
KCF MISS PROFICIENT U201
EFBEEF FOREMOST U208
EFBEEF P606 MABEL R415

UPS DOMINO 3027
CHURCHILL LADY 7202T ET
EF F745 FRANK P230
INNISFAIL 235 R501 ET

CE	BW	WW	YW	DMI	SC	SCF	MM	MG	MCE
7.4	0.6	55	90	0.1	1.5	19	26	54	1.4
17%	12%	60%	52%	28%	9%	29%	58%	61%	60%

MCW	UDDR	TEAT	CW	FAT	REA	MARB	BMI\$	BIIS\$	CHB\$
80	1.5	1.5	77	0.082	0.7	0.83	445	564	197
30%	2%	3%	27%	98%	10%	1%	10%	5%	1%



Lot 19a

INNISFAIL TRADEMARK 13J 319L

{DLF, HYF, IEF, MSUDF}
POLLED • AHA# 44528478 • DOB: 8/31/23 • TATTOO: IF319L

EFBEEF BR VALIDATED B413
INNISFAIL TRADEMARK 1939 ET
INNISFAIL P230 T723

EFBEEF X51 RESOLUTE C615
INNISFAIL C615 132J
INNISFAIL 723 028X 4014 ET

EFBEEF TFL U208 TESTED X651 ET
EFBEEF 4R THYRA Y865
EF F745 FRANK P230
INNISFAIL 235 R501 ET

KCF BENNETT REVOLUTION X51
EFBEEF U208 MABEL X647 ET
CHURCHILL SENSATION 028X
INNISFAIL P230 T723

CE	BW	WW	YW	DMI	SC	SCF	MM	MG	MCE
2.7	1.9	60	96	0.4	1.2	22.7	25	54	1.7
55%	31%	37%	34%	64%	29%	7%	69%	58%	56%

MCW	UDDR	TEAT	CW	FAT	REA	MARB	BMI\$	BIIS\$	CHB\$
91	1.5	1.4	82	0.062	0.74	1.05	514	655	221
54%	2%	11%	14%	91%	7%	1%	2%	1%	1%



split pairs

LOT 20

Another great 2 year old C615 daughter backed by a power cow who made it to the donor pen the good old fashioned way. 525, also the dam of the Lot 3 bred heifer, posts 5 WR@110. She is a second generation Dam of Distinction that has raised bulls that are easy to market, and females that are outliers in the replacement pen. 134 reminds me so much of her mother, just a shot more progressive in her genomic EPDs. I have harped on the long term value of the C615 cattle for years and it still rings true, they have only increased in popularity among visitors to the farm this winter.

Lot 20 is a dark red, long bodied female that is extra feminine in her feature. She is square footed with extra depth to her heel. A high quality young cow, with longevity bred in, is always an intelligent way to allocate funds.

Homozygous Polled.

PE to INNISFAIL 1837 1580 2235 ET 12/26/23-2/1/24. Confirmed safe in calf.



INNISFAIL 755T 525C
Dam of Lot 20

Trademark x C615- a mating that has become second nature around here for two consecutive years. The results are always highly predictable- cattle that are moderate in stature, big ribbed, functional in their build, and offer progressive indices. 326 is just that- gather these young 1939 daughters up, they will put you in the driver's seat when it comes to making good cattle with big carcass data.

Homozygous Polled.



LOT 20A

Lot 20 INNISFAIL C615 134J

[DLF,HYF,IEF,MSUDF,MDF,DBF]
POLLED • AHA# 44330974 • DOB: 9/15/21 • TATTOO: IF134J

KCF BENNETT REVOLUTION X51
EFBEEF X51 RESOLUTE C615
EFBEEF U208 MABEL X647 ET

TH 223 711 VICTOR 755T
INNISFAIL 755T 525C
INNISFAIL U620 090X

MSU TCF REVOLUTION 4R
KCF MISS PROFICIENT U201
EFBEEF FOREMOST U208
EFBEEF P606 MABEL R415

DRF JWR PRINCE VICTOR 711
KBCR 19D DOMINETTE 223
KCF BENNETT R413 U620
INNISFAIL 434 U852

CE	BW	WW	YW	DMI	SC	SCF	MM	MG	MCE
-0.4	4.7	65	99	0	1.4	12.8	21	53	1.6
81%	88%	16%	28%	15%	14%	87%	87%	63%	58%
MCW	UDDR	TEAT	CW	FAT	REA	MARB	BMI\$	BIIS	CHB\$
118	1.5	1.4	65	0.002	0.61	0.52	338	442	159
96%	2%	11%	74%	15%	19%	2%	65%	46%	5%



Lot 20a INNISFAIL TRADEMARK 134J 326L

[DLF,HYF,IEF,MSUDF]
POLLED • AHA# 44528630 • DOB: 9/5/23 • TATTOO: IF326L

EFBEEF BR VALIDATED B413
INNISFAIL TRADEMARK 1939 ET
INNISFAIL P230 T723

EFBEEF X51 RESOLUTE C615
INNISFAIL C615 134J
INNISFAIL 755T 525C

EFBEEF TFL U208 TESTED X651 ET
EFBEEF 4R THYRA Y865
EF F745 FRANK P230
INNISFAIL 235 R501 ET

KCF BENNETT REVOLUTION X51
EFBEEF U208 MABEL X647 ET
TH 223 711 VICTOR 755T
INNISFAIL U620 090X

CE	BW	WW	YW	DMI	SC	SCF	MM	MG	MCE
4.6	1.2	55	86	0.4	0.9	22.7	19	46	5.3
38%	19%	58%	62%	65%	61%	7%	91%	86%	15%
MCW	UDDR	TEAT	CW	FAT	REA	MARB	BMI\$	BIIS	CHB\$
87	1.7	1.5	71	0.052	0.62	0.87	487	612	186
46%	1%	3%	47%	85%	18%	1%	3%	2%	1%



LOT 21



This mating produced some of the highest quality Validated progeny that I have seen. 2154's brothers were easy to move, and one of her sisters was Boyd Meyer's choice of our ET calf crop two years ago. 871e needs no introduction to those who have followed our program.

2154 is the right size for me. She is dark red, square built, and has done a great job staying in optimum condition as a first calf heifer. Lot 21 has an abundance of milk flow while maintaining the udder suspension we require here. This is a neat genetic package that offers limitless opportunities in the direction you mate her.

Homozygous Polled.

AI on 12/10/23 to INNISFAIL ENDORSE 4021 1838 ET. PE to INNISFAIL 1837 1580 2235 ET 12/26/23-2/1/24. Confirmed safe to AI service.



LOT 21A

Sandman will forever be a bull that got away. He ran on heifers here last year, and we sold him to a great commercial operator when he was finished. Once we calved the first set of 2156s, we called up to try and buy him back. As it turns out, the guy really likes his bull, and would just as soon hang onto him. He taught me a valuable lesson in believing in our own bulls. I wouldn't want it any other way, but dang it I want more cattle like Lot 21a.

352 is moderate and dense. She is extra square in her build and ideal in her structure. Check out the cow families stacked up in this one and how balanced she is in her numerical profile, she is the kind that I would love to continue to build off of.

Homozygous Polled.



KJ 482Y LEADING LADY 871E ET
Dam of Lot 21

lot 21 INNISFAIL VALID 871E 2154 ET

[DLF, HYF, IEF, MSUDF]
POLLED • AHA# 44334471 • DOB: 9/13/21 • TATTOO: IF2154
EFBEEF TFL U208 TESTED X651 ET
EFBEEF BR VALIDATED B413
EFBEEF 4R THYRA Y865
R LEADER 6964
KJ 482Y LEADING LADY 871E ET
KJ 274S ROXY 482Y ET
EFBEEF FOREMOST U208
EFBEEF P606 MABEL R415
MSU TCF REVOLUTION 4R
EFBEEF N014 THYRA S645
HYALITE ON TARGET 936
R MISS REVOLUTION 1009
KJ HVH 33N REDEEM 485T ET
KJ 2054 MISTY 274S ET

CE	BW	WW	YW	DMI	SC	SCF	MM	MG	MCE
5.4	1.2	61	93	0.3	1.2	25.3	34	65	8.7
31%	19%	29%	44%	57%	29%	2%	11%	13%	2%
MCW	UDDR	TEAT	CW	FAT	REA	MARB	BMI\$	BIIS	CHB\$
79	1.3	1.3	71	0.042	0.64	0.59	515	629	161
28%	23%	29%	50%	75%	16%	2%	2%	1%	4%



lot 21a INNISFAIL SANDMAN 2154 352L

[DLF, HYF, IEF, MSUDF]
POLLED • AHA# 44528732 • DOB: 9/26/23 • TATTOO: IF352L
NJW 79Z Z311 ENDURE 173D ET
INNISFAIL SANDMAN 1580 2156 ET
STONEGATE 028X 1580
KCF BENNETT ENCORE Z311 ET
BW 91H 100W RITA 79Z ET
CHURCHILL SENSATION 028X
STONEGATE 302X 1365
EFBEEF BR VALIDATED B413
INNISFAIL VALID 871E 2154 ET
KJ 482Y LEADING LADY 871E ET
EFBEEF TFL U208 TESTED X651 ET
EFBEEF 4R THYRA Y865
R LEADER 6964
KJ 274S ROXY 482Y ET

CE	BW	WW	YW	DMI	SC	SCF	MM	MG	MCE
3.8	1.4	70	116	0.5	1.7	20.6	41	76	8
45%	22%	6%	4%	83%	4%	17%	1%	1%	3%
MCW	UDDR	TEAT	CW	FAT	REA	MARB	BMI\$	BIIS	CHB\$
90	1.2	1.3	104	0.032	1.02	0.39	478	582	191
52%	52%	29%	1%	61%	1%	6%	4%	3%	1%



LOT 22

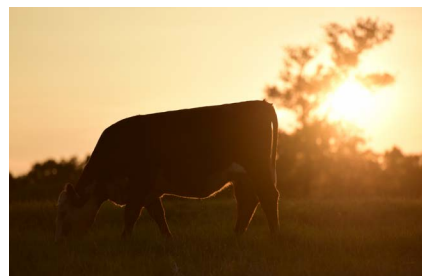
We used Victor 33Z just as 45C was becoming the mother of so many impactful bulls in the Hereford breed. When you study many of the up and coming popular bulls currently, many of them go back to a 33Z cow somewhere in the bottom side of their pedigree. 119 is out of a Tested daughter that has stuck some great daughters in production on Innisfail Lane. Lot 22 is an attractive cow that is super feminine in her front end assembly. From there back-she is wedge shaped, square hiped, and offers added stretch and performance. Her udder is phenomenal and her teats are short and refined.

Homozygous Polled.

AI on 12/10/23 to KJ IF 45C CONFIDENCE 609K. PE to INNISFAIL 1837 1580 2235 ET 12/26/23-2/1/24. Confirmed safe to AI service.



INNISFAIL X651 907 7104 ET
Dam of Lot 22



The jury is in on Trademark from the Olsen NRSP this year. His progeny harvest data was incredible, with 80% of them grading Prime. Lot 22a is another great example that this can be achieved while simultaneously being the kind of cattle that make it easy to go look at every morning. Great balance and symmetry, square hiped, with a bold rib cage.

Homozygous Polled.



LOT 22A

lot 22

INNISFAIL VICTOR 119J

[DLF,HYF,IEF,MSUDF,MDF,DBF]

POLLED • AHA# 44334022 • DOB: 9/1/21 • TATTOO: IF119J

TH 122 711 VICTOR 719T
JDH VICTOR 719T 33Z ET
JDH MS YANKEE 11U ET

DRF JWR PRINCE VICTOR 711
KBCR 19D DOMINETTE 122
AH YANKEE 10S
JDF MS ISAACS 075 60N

EFBEEF TFL U208 TESTED X651 ET
INNISFAIL X651 907 7104 ET
INNISFAIL M326 907W

EFBEEF FOREMOST U208
EFBEEF P606 MABEL R415
KCF BENNETT 3008 M326
INNISFAIL 9P T759

CE	BW	WW	YW	DMI	SC	SCF	MM	MG	MCE
5.2	2.2	65	105	0.6	0.9	21.2	25	58	0.7
33%	37%	16%	15%	85%	61%	13%	64%	40%	69%
MCW	UDDR	TEAT	CW	FAT	REA	MARB	BMI\$	BI\$	CHB\$
87	1.3	1.3	78	0.022	0.4	0.16	426	514	126
46%	23%	29%	25%	45%	59%	37%	16%	15%	32%



lot 22a

INNISFAIL TRADEMARK 119J 318L

[DLF,HYF,IEF,MSUDF]

POLLED • AHA# 44528477 • DOB: 8/31/23 • TATTOO: IF318L

EFBEEF BR VALIDATED B413
INNISFAIL TRADEMARK 1939 ET
INNISFAIL P230 T723

EFBEEF TFL U208 TESTED X651 ET
EFBEEF 4R THYRA V865
EF F745 FRANK P230
INNISFAIL 235 R501 ET

JDH VICTOR 719T 33Z ET
INNISFAIL VICTOR 119J
INNISFAIL X651 907 7104 ET

TH 122 711 VICTOR 719T
JDH MS YANKEE 11U ET
EFBEEF TFL U208 TESTED X651 ET
INNISFAIL M326 907W

CE	BW	WW	YW	DMI	SC	SCF	MM	MG	MCE
0.1	2.9	69	110	0.6	0.8	18.5	23	58	4
77%	54%	8%	9%	87%	72%	34%	75%	41%	27%
MCW	UDDR	TEAT	CW	FAT	REA	MARB	BMI\$	BI\$	CHB\$
112	1.5	1.5	82	0.002	0.54	0.57	422	538	174
91%	2%	3%	15%	15%	30%	2%	17%	9%	2%



LOT 23



The Encore 237c cattle in production have gained many friends the last couple of years. They have made attractive, long lasting mother cows. Lot 23's mother is a hard working 10 year old cow that still calls Innisfail Lane home- she posts 8 WR@104, with 3 daughters raising 7 calves at a weaning ratio of 101.3.

037 is an arrogant headed, really attractive 3 year old. Her structure is ideal and her udder is as good as anything we have seen. While raising her first calf to a weaning ratio of 114, she jumped up 2 months in calving interval as a first calf heifer. Yeah man, that's the good stuff!

AI on 11/27/23 to INNISFAIL 1837 1580 2235 ET. PE to INNISFAIL 1939 8170 2222 ET 12/18/23-2/1/24. Confirmed safe to AI service.

lot 23 INNISFAIL 237C 037H

{DLF,HYF,IEF,MSUDF}
POLLED • AHA# 44224362 • DOB: 9/13/20 • TATTOO: IF037H

KCF BENNETT ENCORE Z311 ET
NJW 108Y Z311 ENCORE 237C ET
NJW 94R 100W MONTANA 108Y

SCHU-LAR ON TARGET 22S
KCF MISS REVOLUTION X338 ET
NJW 73S M326 TRUST 100W ET
NJW 76K CIMMARON GAL 94R

WHITEHAWK 10H BEEFMAKER 929X
INNISFAIL 929 368A
INNISFAIL 350 166Y

DR WORLD CLASS 517 10H
BBF BECKYS MARK P606 S32
KCF BENNETT M326 T350
INNISFAIL 208 M226

CE	BW	WW	YW	DMI	SC	SCF	MM	MG	MCE
6.2	1.3	61	97	0.4	1.9	13.1	31	61	7.1
25%	21%	32%	33%	67%	2%	85%	26%	25%	6%
MCW	UDDR	TEAT	CW	FAT	REA	MARB	BMI\$	BI\$	CHB\$
87	1.2	1.3	91	0.012	0.54	0.47	347	445	178
45%	52%	29%	4%	30%	30%	3%	59%	44%	2%



lot 23a INNISFAIL KING 037H 315L

{DLF,HYF,IEF,MSUDF}
POLLED • AHA# 44528472 • DOB: 8/29/23 • TATTOO: IF315L

K KING 400
GO KING E33
GO MS SENSATION B3

NJW 73S W18 HOMETOWN 10Y ET
H KARLY 2515 ET
CHURCHILL SENSATION 028X
GO MS REVOLUTION Z1

NJW 108Y Z311 ENCORE 237C ET
INNISFAIL 237C 037H
INNISFAIL 929 368A

KCF BENNETT ENCORE Z311 ET
NJW 94R 100W MONTANA 108Y
WHITEHAWK 10H BEEFMAKER 929X
INNISFAIL 350 166Y

CE	BW	WW	YW	DMI	SC	SCF	MM	MG	MCE
12.5	-1.2	61	100	0.5	2.1	20.6	42	73	2.8
3%	3%	30%	24%	77%	1%	17%	1%	2%	42%
MCW	UDDR	TEAT	CW	FAT	REA	MARB	BMI\$	BI\$	CHB\$
81	1.3	1.3	102	0.102	0.64	0.44	461	564	181
32%	23%	29%	1%	100%	16%	4%	7%	5%	1%



LOT 23A



This is the best King daughter that we have raised. She is so balanced and attractive. Her three-dimensional body shape is awesome, and her basic build is spot on. 315's genomic script demonstrates multi-trait progression to its highest potential. Most importantly- refer to her mother's footnote and check out that cow family history. Lot 23a is a unique, valuable breeding tool.

DBP.

LOT 24

I think most of us, especially in the Southeast, have gotten comfortable with these 4013 daughters in production. They just seem to not let you down. 915's Dam of Distinction mother brings in 7 WR@107, she is a handy AI cow to have around that you can always count on. 481 (Lot 24's dam) has 3 daughters that have totaled 7 calves for a WR@104.6.

915 represents the heart of our herd. She is big middled, functional in her build, with an udder that will stand the test of time. Lot 24 is the kind of cow that I know could live here well into her teens and make bulls that create repeat customers and more females to fill her shoes, but we are dedicated to sourcing cattle for this sale that we have the utmost faith in.

Homozygous Polled.

AI on 12/10/23 to KJ IF 45C CONFIDENCE 609K. PE to INNISFAIL HARVEST 23K 12/26/23-2/1/24. Confirmed safe to AI service.



Lot 24

INNISFAIL 4013 915G

[DLF,HYF,IEF,MSUDF]

POLLED • AHA# 44097709 • DOB: 9/1/19 • TATTOO: IF915G

EFBEEF TFL U208 TESTED X651 ET
INNISFAIL WHR X651/723 4013 ET
 INNISFAIL P230 T723

EFBEEF FOREMOST U208
 EFBEEF P606 MABEL R415
 EF F745 FRANK P230
 INNISFAIL 235 R501 ET

HUTH 813 DOMINO 3027 Z006
INNISFAIL Z006 481B
 INNISFAIL 929 229Z

UPS DOMINO 3027
 SCHU-LAR 813 OF 5P M326 ET
 WHITEHAWK 10H BEEFMAKER 929X
 INNISFAIL ON TARGER U876

CE	BW	WW	YW	DMI	SC	SCF	MM	MG	MCE
6	1.6	59	93	0.1	1.7	23.7	30	60	5.9
26%	25%	37%	44%	24%	4%	4%	32%	32%	11%
MCW	UDDR	TEAT	CW	FAT	REA	MARB	BMI\$	BII\$	CHB\$
91	1.3	1.2	70	0.092	0.18	0.57	482	596	156
54%	23%	57%	55%	99%	92%	2%	4%	2%	6%



Lot 24

INNISFAIL BROADWAY 915G 314L

[DLF,HYF,IEF,MSUDF]

POLLED • AHA# 44529131 • DOB: 8/29/23 • TATTOO: IF314L

SHF YORK 19H Y02
CHURCHILL BROADWAY 858F
 CHURCHILL LADY 640D

MSU MF HUDSON 19H
 LOEWEN MISS P20 10W
 KCF BENNETT ENCORE Z311 ET
 CHURCHILL LADY 4164B

INNISFAIL WHR X651/723 4013 ET
INNISFAIL 4013 915G
 INNISFAIL Z006 481B

EFBEEF TFL U208 TESTED X651 ET
 INNISFAIL P230 T723
 HUTH 813 DOMINO 3027 Z006
 INNISFAIL 929 229Z

CE	BW	WW	YW	DMI	SC	SCF	MM	MG	MCE
-0.2	4.6	72	124	0.4	1.8	20.1	29	65	6.5
79%	86%	4%	2%	64%	2%	20%	37%	13%	8%
MCW	UDDR	TEAT	CW	FAT	REA	MARB	BMI\$	BII\$	CHB\$
111	1.4	1.3	90	0.112	0.41	0.49	448	567	175
90%	7%	29%	5%	100%	57%	3%	9%	5%	2%



LOT 24A

We used Broadway heavily on 4013 and Validated daughters last year, and couldn't be happier with the result. He has been a great outcross option, that doesn't take a step back in genetic progress, and keeps the biological type in check. Lot 24a is performance driven cattle that checks the boxes for basic fundamentals. She mirrors her mother with a darker, shorter marked color pattern.

Homozygous Polled.



LOT 25



You didn't think that you would make it through this catalog without spotting a T723 daughter or two, did you? With over 160 progeny in the database, she spent 17 years on earth being a main driving force behind the Innisfail program. The Leader x T723 mating was as consistent as any, creating high CED cattle that mature to a sensible size and stay in production.

1953 is extra opened up in her body shape, and has added strength through her pinset. She has the prototype T723 udder- extra tidy and refined. These are the cows I am comfortable breeding on- they stick around, do a nice job, and are extremely fertile.

Homozygous Polled.

AI on 12/10/23 to KJ IF 45C CONFIDENCE 609K. PE to INNISFAIL HARVEST 23K 12/26/23-2/1/24. Confirmed safe to AI service.



LOT 25A

That's right folks, DBF Masterplan daughters, come and get 'em! I know I sure wish they were sticking around. 183F was a sure fire mating on the T723 cow family for two consecutive years here. It just made sense, and it sure worked. You could count on them to be huge bodied, high performing, and great structured. 323 fits the mold to a "T."

Homozygous Polled. DBF.



INNISFAIL WHR X651/723 4013 ET
Maternal brother to Lot 25

lot 25 INNISFAIL T723 6964 1953 ET

{DLF,HYF,IEF,MSUDF}
POLLED • AHA# 44097665 • DOB: 9/14/19 • TATTOO: IF1953

HYALITE ON TARGET 936
R LEADER 6964
R MISS REVOLUTION 1009

EF F745 FRANK P230
INNISFAIL P230 T723
INNISFAIL 235 R501 ET

SCHU-LAR ON TARGET 225
HYALITE TS LASS 310
MSU TCF REVOLUTION 4R
R MISS WRANGLER 3007

FELTONS ENDURANCE 745
FELTONS KATE P38
FELTONS LEXUS 235
FELTONS KATE P26

CE	BW	WW	YW	DMI	SC	SCF	MM	MG	MCE
8.9	1.1	59	92	0.3	1.4	19.3	17	46	2.2
11%	18%	41%	45%	54%	14%	26%	95%	86%	50%

MCW	UDDR	TEAT	CW	FAT	REA	MARB	BMI\$	BII\$	CHB\$
83	1.5	1.5	72	0.112	0.19	0.42	399	500	138
37%	2%	3%	43%	100%	91%	5%	27%	19%	17%



lot 25a INNISFAIL MASTERPLAN 1923 323L

POLLED • AHA# 44530052 • DOB: 9/2/23 • TATTOO: IF323L

KCF BENNETT STRATEGY Z303 ET
TH MASTERPLAN 183F
TH 512X 145Y DOMINETTE 57B

R LEADER 6964
INNISFAIL T723 6964 1953 ET
INNISFAIL P230 T723

SCHU-LAR ON TARGET 225
KCF MISS REVOLUTION X338 ET
FTF PROSPECTOR 145Y
TH 122 711 DOMINETTE 512X ET

HYALITE ON TARGET 936
R MISS REVOLUTION 1009
EF F745 FRANK P230
INNISFAIL 235 R501 ET

CE	BW	WW	YW	DMI	SC	SCF	MM	MG	MCE
9.2	0.6	63	106	0.6	1.6	18.1	19	51	6.1
10%	12%	21%	13%	85%	6%	37%	91%	72%	10%

MCW	UDDR	TEAT	CW	FAT	REA	MARB	BMI\$	BII\$	CHB\$
88	1.5	1.6	73	0.102	0.38	0.49	389	497	148
48%	2%	1%	39%	100%	63%	3%	33%	20%	10%

LOT 26

The dark red 4 year old Leader x T723. We can't overemphasize the value of such a high proof pedigree. She offers a numerical profile that opens up an array of directions for potential matings.

1944 is a powerhouse with genuine skeletal width. Her feet and legs are stout, and her rib cage is bold. She has an extremely level udder. Lot 26 is moderate in her mature height without sacrificing true density. A real solid AI cow that has the natural fleshing ability to look good on minimal resources.

AI on 12/10/23 to KJ IF 45C CONFIDENCE 609K. PE to INNISFAIL HARVEST 23K 12/26/23-2/1/24. Confirmed safe to AI service.



INNISFAIL TRADEMARK 1939 ET
Maternal brother to Lots 25 & 26

This past summer I shot out to Topp's while in Minot at the North Dakota State Fair. Ryan asked us what we wanted to see, and it was anything Masterplan-mother, daughters, ect, ect. We saw all of the above, and left feeling better than ever about all the 183F sired pregnancies we had incubating on Innisfail Lane. 339 achieves everything we wanted to when we used the bull so heavily- fault free, no nonsense cattle with added marbling.

DBF.



LOT 26A

lot 26 INNISFAIL T723 6964 1944 ET

{DLF,HYF,IEF,MSUDF}
POLLED • AHA# 44097656 • DOB: 9/6/19 • TATTOO: IF1944

HYALITE ON TARGET 936
R LEADER 6964
R MISS REVOLUTION 1009

EF F745 FRANK P230
INNISFAIL P230 T723
INNISFAIL 235 R501 ET

SCHU-LAR ON TARGET 22S
HYALITE TS LASS 310
MSU TCF REVOLUTION 4R
R MISS WRANGLER 3007

FELTONS ENDURANCE 74S
FELTONS KATE P38
FELTONS LEXUS 23S
FELTONS KATE P26

CE	BW	WW	YW	DMI	SC	SCF	MM	MG	MCE
8.1	1.9	57	89	0.2	1.2	18.2	11	40	1.4
14%	31%	48%	55%	44%	29%	36%	98%	95%	60%

MCW	UDDR	TEAT	CW	FAT	REA	MARB	BMI\$	BIIS\$	CHB\$
86	1.5	1.5	65	0.042	0.32	0.46	387	486	141
42%	2%	3%	73%	75%	75%	3%	34%	24%	14%



lot 26a INNISFAIL MASTERPLAN 1944 339L

{DLF,HYF,IEF,MSUDF,MDF,DBF}
POLLED • AHA# 44530056 • DOB: 9/10/23 • TATTOO: IF339L

KCF BENNETT STRATEGY Z303 ET
TH MASTERPLAN 183F
TH 512X 145Y DOMINETTE 57B

R LEADER 6964
INNISFAIL T723 6964 1944 ET
INNISFAIL P230 T723

SCHU-LAR ON TARGET 22S
KCF MISS REVOLUTION X338 ET
FTF PROSPECTOR 145Y
TH 122 71I DOMINETTE 512X ET

HYALITE ON TARGET 936
R MISS REVOLUTION 1009
EF F745 FRANK P230
INNISFAIL 235 R501 ET

CE	BW	WW	YW	DMI	SC	SCF	MM	MG	MCE
7.3	1.4	68	113	0.3	1.7	21.5	21	55	2.5
18%	22%	10%	6%	59%	4%	12%	86%	56%	46%

MCW	UDDR	TEAT	CW	FAT	REA	MARB	BMI\$	BIIS\$	CHB\$
84	1.6	1.6	70	0.082	0.47	0.46	445	556	150
30%	1%	1%	53%	98%	43%	3%	10%	6%	9%



LOT 27



A true sale feature, and one that I am excited to watch go on to be an impactful piece for her new owner. 1831 is a full sister to past Mile High Night high selling bull, Energy 1837. She is also a flushmate to Endorse 1838, a feed efficiency super star in the reference sire program and a bull that will continue to see heavy use in Madison. Lot 27 is a direct daughter of 4021, the full sister to 4013 that scanned over 8% adjusted IMF. 1831's natural calf in 2021 was the high seller in the Appalachian Elite sale this past fall. Everyday, when I see this cow and the job she is doing it makes me feel good about all the Endorses in utero at the ranch.

1831 has the kind of build that will keep you in the cow business. She is good footed, ultra functional in the set to her hind leg, and laid back in her shoulder blade and knee. She does all this while maintaining an abundance of body and mass. Her EPD profile represents balanced trait progression, which leads to all 3 dollar indices ranking in the top 1% of the breed.

Homozygous Polled.

PE to INNISFAIL HARVEST 23K 12/26/23-2/1/24. Confirmed safe in calf.



If this one doesn't get you fired up about the future here at Innisfail, then I have steered the train off the tracks and need to be fired. Big figures, big look, big donor potential! I can only pray that our replacement pen is filled with cattle like 338 in the coming years. She displays femininity with power, and breed leading carcass data with strong genomic markers for the stayability that has made the Hereford breed a vital ingredient in America's cowherd. Selling a pair like this breaks my heart, but if you are going to pen your stock next to those mouth watering cows with the wine glass on their shoulder- you better bring your best.

LOT 27A

Homozygous Polled. DBF.



INNISFAIL PROMINENT 121J
Daughter of Lot 27
Sold in Appalachian Elite to Andy Smith

lot 27 INNISFAIL ENDURE 4021 1831 ET

(DLF,HYF,IEF,MSUDF)

POLLED • AHA# 43984206 • DOB: 9/3/18 • TATTOO: IF1831

KCF BENNETT ENCORE Z311 ET
NJW 79Z Z311 ENDURE 173D ET
BW 91H 100W RITA 79Z ET

SCHU-LAR ON TARGET 22S
KCF MISS REVOLUTION X338 ET
NJW 73S M326 TRUST 100W ET
REMITALL RITA 91H

EFBEEF TFL U208 TESTED X651 ET
INNISFAIL 723 U208 4021 ET
INNISFAIL P230 T723

EFBEEF FOREMOST U208
EFBEEF P606 MABEL R415
EF F745 FRANK P230
INNISFAIL 235 R501 ET

CE	BW	WW	YW	DMI	SC	SCF	MM	MG	MCE
4	3.5	68	106	0.5	1.3	23.8	28	63	2.7
43%	68%	8%	14%	82%	20%	4%	43%	21%	43%
MCW	UDDR	TEAT	CW	FAT	REA	MARB	BMI\$	BI\$	CHB\$
75	1.4	1.4	104	0.062	0.98	0.54	523	639	197
20%	7%	11%	1%	91%	1%	2%	1%	1%	1%



lot 27a INNISFAIL BROADWAY 1831 338L

(DLF,HYF,IEF,MSUDF)

POLLED • AHA# 44529135 • DOB: 9/7/23 • TATTOO: IF338L

SHF YORK 19H Y02
CHURCHILL BROADWAY 858F
CHURCHILL LADY 640D

MSU MF HUDSON 19H
LOEWEN MISS P20 10W
KCF BENNETT ENCORE Z311 ET
CHURCHILL LADY 4164B

NJW 79Z Z311 ENDURE 173D ET
INNISFAIL ENDURE 4021 1831 ET
INNISFAIL 723 U208 4021 ET

KCF BENNETT ENCORE Z311 ET
BW 91H 100W RITA 79Z ET
EFBEEF TFL U208 TESTED X651 ET
INNISFAIL P230 T723

CE	BW	WW	YW	DMI	SC	SCF	MM	MG	MCE
1.4	4.6	73	117	0.4	1.1	24.8	29	65	4.1
67%	86%	3%	4%	66%	39%	3%	39%	12%	26%
MCW	UDDR	TEAT	CW	FAT	REA	MARB	BMI\$	BI\$	CHB\$
103	1.5	1.5	108	0.092	0.86	0.53	547	668	205
80%	2%	3%	1%	99%	3%	2%	1%	1%	1%



INNISFAIL 1837 I580 2235 ET

[DLF,HYF,IEF,MSUDF,MDF,DBC]
POLLED • AHA# 44434216 • DOB: 9/12/22 • TATTOO: IF2235

NJW 79Z Z311 ENDURE I73D ET
INNISFAIL ENERGY 4021 1837 ET
INNISFAIL 723 U208 4021 ET

CHURCHILL SENSATION O28X
STONEGATE O28X I580
STONEGATE 3027 I365

KCF BENNETT ENCORE Z311 ET
BW 91H 100W RITA 79Z ET
EFBEEF TFL U208 TESTED X651 ET
INNISFAIL P230 T723

UPS DOMINO 3027
CHURCHILL LADY 7202T ET
UPS DOMINO 3027
STONEGATE 4R I165

CE	BW	WW	YW	DMI	SC	SCF	MM	MG	MCE
7	0.5	73	118	0.6	1.9	35.9	42	79	5.4
20%	11%	3%	3%	84%	2%	1%	1%	1%	14%

MCW	UDDR	TEAT	CW	FAT	REA	MARB	BMI\$	BI\$	CHB\$
89	1.6	1.6	96	0.082	0.67	0.53	690	820	186
51%	1%	1%	2%	98%	13%	2%	0%	0%	1%



PYRAMID FUNCTION O244

[DLF,IEF,HYF,MSUDF]
POLLED • AHA# 44162049 • DOB: 4/9/20 • TATTOO: 0244

NJW 98S R117 RIBEVE 88X ET
LCX PERFECTO 11B ET
WLL ZOEY 3Z

UPS DOMINO 3027
FHF 3027 VICTRA 115D
FHF 88X VICTRA 207B ET

SHF RIB EVE M326 R117
NJW 9126J DEW DOMINO 98S
TH 122 71I VICTOR 719T
WLL VENUS 19X

CL 1 DOMINO 9126J 1ET
UPS MISS DIAMOND 1353
NJW 98S R117 RIBEVE 88X ET
FHF 10H VICTRA 31S

CE	BW	WW	YW	DMI	SC	SCF	MM	MG	MCE
8.6	2.6	65	94	0.0	0.7	30.5	41	74	7.6
12%	47%	15%	39%	14%	80%	1%	1%	2%	4%

MCW	UDDR	TEAT	CW	FAT	REA	MARB	BMI\$	BI\$	CHB\$
50	1.40	1.50	65	-0.018	0.56	0.11	567	656	120
3%	7%	3%	72%	3%	28%	52%	1%	1%	43%



INNISFAIL ENDORSE 4021 1838 ET

[DLF,HYF,IEF,MSUDF]
SCURRED • AHA# 43984217 • DOB: 9/5/18 • TATTOO: IF1838

KCF BENNETT ENCORE Z311 ET
NJW 79Z Z311 ENDURE I73D ET
BW 91H 100W RITA 79Z ET

EFBEEF TFL U208 TESTED X651 ET
INNISFAIL 723 U208 4021 ET
INNISFAIL P230 T723

SCHU-LAR ON TARGET 22S
KCF MISS REVOLUTION X338 ET
NJW 73S M326 TRUST 100W ET
REMITALL RITA 91H

EFBEEF FOREMOST U208
EFBEEF P606 MABEL R415
EF F745 FRANK P230
INNISFAIL 235 R501 ET

CE	BW	WW	YW	DMI	SC	SCF	MM	MG	MCE
8.2	2.3	70	108	0.2	1.4	25.2	26	61	7
14%	40%	6%	11%	36%	14%	2%	61%	27%	6%

MCW	UDDR	TEAT	CW	FAT	REA	MARB	BMI\$	BI\$	CHB\$
85	1.4	1.4	98	0.132	0.92	0.68	551	681	205
40%	7%	11%	2%	100%	2%	1%	1%	1%	1%



KJ IF 45C CONFIDENCE 609K ET

[DLF,HYF,IEF,MSUDF,MDF,DBF]
POLLED • AHA# 44383496 • DOB: 1/18/22 • TATTOO: IF609K

EFBEEF BR VALIDATED B413
INNISFAIL TRADEMARK 1939 ET
INNISFAIL P230 T723

JDH VICTOR 719T 33Z ET
JDH AH MS 34X VICTOR 33Z45C ET
AH JDH MS 25L WRANGLER 34X ET

EFBEEF TFL U208 TESTED X651 ET
EFBEEF 4R THYRA Y865
EF F745 FRANK P230
INNISFAIL 235 R501 ET

TH 122 71I VICTOR 719T
JDH MS YANKEE 11U ET
JDH 15 WRANGLER 25L
AH QUEEN BELLE 14R

CE	BW	WW	YW	DMI	SC	SCF	MM	MG	MCE
6.7	1.6	67	102	0.3	1.4	25.4	26	59	7.8
22%	25%	12%	21%	55%	14%	2%	61%	35%	4%

MCW	UDDR	TEAT	CW	FAT	REA	MARB	BMI\$	BI\$	CHB\$
82	1.7	1.6	85	0.022	0.68	0.92	552	693	216
35%	1%	1%	10%	45%	12%	1%	1%	1%	1%



LOT 28



INNISFAIL 237C 933G
 Daughter of Lot 28
 Sold to Hawk's Pine Farm



INNISFAIL 723 028X 4014 ET
 Dam of Lot 28

#28 **INNISFAIL 4013 723E**

[DLF,HYF,IEF,MDF]
 POLLED • AHA# 43863678 • DOB: 8/30/17 • TATTOO: IF723E
 EFBEEF TFL U208 TESTED X651 ET
INNISFAIL WHR X651/723 4013 ET
 INNISFAIL P230 T723
 CHURCHILL SENSATION 028X
INNISFAIL 723 028X 4014 ET
 INNISFAIL P230 T723
 EFBEEF FOREMOST U208
 EFBEEF P606 MABEL R415
 EF F745 FRANK P230
 INNISFAIL 235 R501 ET
 UPS DOMINO 3027
 CHURCHILL LADY 7202T ET
 EF F745 FRANK P230
 INNISFAIL 235 R501 ET

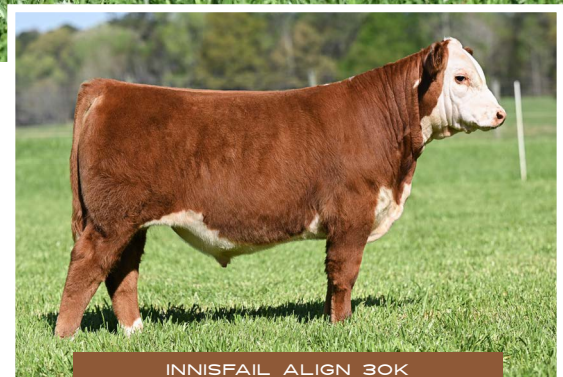
CE	BW	WW	YW	DMI	SC	SCF	MM	MG	MCE
9	-0.5	62	97	0	1.4	18.7	30	61	3.3
10%	5%	25%	32%	19%	14%	32%	34%	27%	35%
MCW	UDDR	TEAT	CW	FAT	REA	MARB	BMI\$	BII\$	CHB\$
77	1.7	1.8	70	0.092	0.4	0.56	415	526	160
25%	1%	1%	52%	99%	59%	2%	20%	12%	5%



Surprise! We decided to order these split pairs by age, as a result there is a true, proven, feature donor cow hanging out here toward the back of the catalog. We lost T723 (723e's maternal and paternal granddam) this winter. T723 played a pivotal role propelling Innisfail in our intended direction of making cattle that thrive in harmony with our environment with minimal inputs, while possessing the genetic ability to generate cattle with high premium potentials on the rail. On the day we lost her, I asked Kacie- What is the one cow that we can offer in the sale that pays T723 the respect she deserves? We both knew the only answer was 723E.

The last two breeding seasons, we put in more 723E embryos than any other donor cow. She was the dam of over 50 embryos we implanted this year. Lot 28 injects massive body shape, top tier udder quality, and a functional skeletal build into all of her offspring. A daughter was our high selling split pair cow last spring to Hawk's Pine Farm. Her natural bull calf was very popular, and ended up selling to GKB. When you study 723e's genomic profile, it describes her perfectly: offering balance across the board without falling out of bed on a single trait. Her mother is an awesome Dam of Distinction, 028X x T723, that sports 7WR@106.1, 4 BR@95.5, 4WR@100.8, 7 IMF@112.6

PE to INNISFAIL HARVEST 23K 12/26/23-2/1/24. Confirmed safe in calf.



lot 28a **INNISFAIL 858F 723E 2371 ET**

POLLED • AHA# 44531254 • DOB: 9/22/23 • TATTOO: IF2371

SHF YORK 19H Y02
CHURCHILL BROADWAY 858F
 CHURCHILL LADY 640D

INNISFAIL WHR X651/723 4013 ET
INNISFAIL 4013 723E
 INNISFAIL 723 028X 4014 ET

MSU MF HUDSON 19H
 LOEWEN MISS P20 10W
 KCF BENNETT ENCORE Z311 ET
 CHURCHILL LADY 4164B

EFBEEF TFL U208 TESTED X651 ET
 INNISFAIL P230 T723
 CHURCHILL SENSATION 028X
 INNISFAIL P230 T723

CE	BW	WW	YW	DMI	SC	SCF	MM	MG	MCE
4.6	1.1	65	106	0.3	1.3	21.2	28	61	6.9
38%	18%	15%	14%	57%	20%	13%	46%	29%	6%
MCW	UDDR	TEAT	CW	FAT	REA	MARB	BMI\$	BII\$	CHB\$
91	1.6	1.6	86	0.122	0.33	0.54	456	572	170
55%	1%	1%	8%	100%	73%	2%	7%	4%	3%

INNISFAIL ALIGN 30K
 Maternal brother to Lot 28A
 Sold to GKB Cattle, Texas

Due to the process of mass production, 723e was intentionally held open last year. I really wanted something to stand by her side and offer up proof of her generating potential, so we picked up 2371 at a co-op herd. Here is a performance driven Broadway daughter with a great look. She is built right and is a great representation of what our replacement pen will look like this year. A great opportunity to buy into the next generation of the 723 cow family.

GE-EPDs available sale day.

LOT 29



Yep, you read that pedigree right- Who Maker x Diana. One of the most potent show cattle pedigrees of recent times. Weyman, much like anyone that traveled through Dunlap, Iowa in 2014 and 2015, decided that he needed something out of the legendary Diana cow. 101 came to Madison in a pregnant recip, and has done a phenomenal job in production. Lot 29 sports a nursing ratio of 104, pretty cool to see what this show animal can do when thrown into a large contemporary group. Jae Van Horn sold a RYC heifer out of her for five figures that went on to be very competitive in Indiana.

101 is soft structured, ginormous bodied, and extra lady-like in how she's sculpted up front. She is carrying a Gunsmoke calf. I left Oklahoma City with one thing in mind, the world needs more Hereford bulls like Gunsmoke. He epitomizes phenotype and genotype. The calf in Lot 29 could easily pay for your investment.

AI on 12/10/23 to STELLPFLUG GUNSMOKE 222 ET. PE to INNISFAIL HARVEST 23K 12/26/23-2/1/24. Confirmed safe to AI service.

Lot 29 INNISFAIL WONDER WOMAN 101D ET

{DLF,HYF,IEF,MDF,DBF}

POLLED • AHA# 43680886 • DOB: 2/20/16 • TATTOO: IF101D

DKF RO CASH FLOW 0245 ET
 ECR WHO MAKER 210 ET
 RV GOLDEN LADY 5064
 CRR ABOUT TIME 743
 JRR MISS TOBEY 711T
 K&B DOMINO 2570
 RV MS GOLD DUST 3064
 THM DURANGO 4037
 CRR D03 CASSIE 206
 ANKONIAN MIDAS 72
 LCC TWO TIMIN 438 ET
 CRR ABOUT TIME 743
 MS DIANA 01
 TCC MISS SHELBY 82 ET

CE	BW	WW	YW	DMI	SC	SCF	MM	MG	MCE
1.8	1.6	58	85	-0.2	0.9	21.6	36	65	1
64%	25%	46%	66%	7%	61%	11%	7%	13%	65%
MCW	UDDR	TEAT	CW	FAT	REA	MARB	BMI\$	BII\$	CHB\$
153	1.3	1.2	82	-0.028	0.56	-0.05	459	525	128
100%	23%	57%	14%	1%	26%	95%	7%	12%	29%



Lot 29a INNISFAIL FUNCTION 101D 347L

{DLF,HYF,IEF,MSUDF,MDF,DBF}

POLLED • AHA# 44528817 • DOB: 9/22/23 • TATTOO: IF347L

LCX PERFECTO 11B ET
 PYRAMID FUNCTION 0244
 FHF 3027 VICTRA 115D
 NJW 98S R117 RIBEYE 88X ET
 WLL ZOEY 32
 UPS DOMINO 3027
 FHF 88X VICTRA 207B ET
 THM DURANGO 4037
 CRR RO CASH FLOW 0245 ET
 RV GOLDEN LADY 5064
 CRR ABOUT TIME 743
 TCC MISS SHELBY 82 ET
 ECR WHO MAKER 210 ET
 INNISFAIL WONDER WOMAN 101D ET
 TCC MS DIANA 01

CE	BW	WW	YW	DMI	SC	SCF	MM	MG	MCE
7.7	0.2	60	87	-0.1	0.7	26.4	45	75	7.3
16%	9%	35%	61%	11%	81%	1%	1%	1%	5%
MCW	UDDR	TEAT	CW	FAT	REA	MARB	BMI\$	BII\$	CHB\$
83	1.4	1.4	87	-0.018	0.59	0.09	534	614	147
37%	7%	11%	7%	3%	22%	59%	1%	2%	10%



LOT 29A



Function is not exactly what many would consider a sire of show cattle, but big soft legs, body, muscle, and proportionality are always cool. I have been a big fan of this one since she hit the ground. Exceptional skeletal width, undeniable presence, with an unforgettable color pattern. 347's structure is assembled like the kind that compete as senior yearlings: square, soft, and flexible. This one will compete with the best of them, and make a unique breeding piece when it's over. Show cow with a 527 BMI!

show cattle

LOT 30



When I should have been marketing this pair as show heifers this fall, life got pretty busy with private treaty bull sales and getting cows bred. They are high quality and deserved to be running the show road this spring. When we flushed 983 to 628 it made awesome cattle, including one that Luke Daniels of TX campaigned very successfully. Sancho was a logical mating to follow up with and it did not disappoint. These cattle have the intangibles it takes to get a look in 2024, wrapped up in a pedigree that is open to most of the mainstream bulls that are siring cattle at the backdrop. Breed them up for springs, or hold them over for falls, there are limitless opportunities with these cattle.

They sell open, ready to breed to the bull of your choice.

Lot 30- Dehorned, DBF.

Lot 31- Polled, DBP.

LOT 31



Lot 30 INNISFAIL 8923 BARBIE 2306 ET

{DLF,HYF,IEF,MSUDF,MDF,DBF}
HORNED • AHA# 44499022 • DOB: 5/15/23 • TATTOO: IF2306

H FHF ADVANCE 628 ET
ECR 628 IVYS ADVANCE 8923 ET
ECR MISS SENSATION 4406 ET

HH ADVANCE 4075B ET
FHF 408 RITA 21W
UPS SENSATION 2296 ET
ECR LADY FLOW 212ET

R LEADER 6964
KJ BJ 876A LEADING LADY 983E
KJ 274S COUNTRY GIRL 876A ET

HYALITE ON TARGET 936
R MISS REVOLUTION 1009
PHH PCC KJ 750P BIG COUNTRY934ET
KJ 2054 MISTY 274S ET

CE	BW	WW	YW	DMI	SC	SCF	MM	MG	MCE
6.1	2.8	59	90	0.1	1.1	13.7	32	61	3
26%	52%	41%	51%	32%	39%	80%	21%	26%	39%

MCW	UDDR	TEAT	CW	FAT	REA	MARB	BMI\$	BIIS	CHBS
87	1	1.1	88	0.042	0.81	0.03	337	403	134
44%	95%	82%	7%	75%	4%	79%	66%	67%	22%



Lot 31 INNISFAIL 8923 BARBIE 2308 ET

POLLED • AHA# 44499024 • DOB: 5/15/23 • TATTOO: IF2308

H FHF ADVANCE 628 ET
ECR 628 IVYS ADVANCE 8923 ET
ECR MISS SENSATION 4406 ET

HH ADVANCE 4075B ET
FHF 408 RITA 21W
UPS SENSATION 2296 ET
ECR LADY FLOW 212ET

R LEADER 6964
KJ BJ 876A LEADING LADY 983E
KJ 274S COUNTRY GIRL 876A ET

HYALITE ON TARGET 936
R MISS REVOLUTION 1009
PHH PCC KJ 750P BIG COUNTRY934ET
KJ 2054 MISTY 274S ET

CE	BW	WW	YW	DMI	SC	SCF	MM	MG	MCE
4.8	2.2	58	88	0.1	1.2	14.7	35	64	3.7
36%	37%	45%	58%	32%	29%	72%	9%	15%	31%

MCW	UDDR	TEAT	CW	FAT	REA	MARB	BMI\$	BIIS	CHBS
85	1	1	74	0.042	0.66	-0.02	332	396	109
41%	95%	94%	36%	75%	14%	91%	69%	71%	68%

LOT 32



Everytime I think I could walk away from show cattle, and never see another one again- an animal like Lot 32 appears. This thing will make a guy excited to go dump a bucket of feed every morning. I will never forget leaving Jason's place, looking at Kacie, and asking- "Is that Red River really as good as I think she is!?" Wild looking, huge bodied, killer legged, with genuine skeletal width. Her mother is a past high seller for us, and it gets me fired up to see customers put their own stamps on these animals. Thank you Jason, this thing is a gangster.

#32 DAY IF SINGLE LADIE 14 ET

POLLED • AHA# 44518428 • DOB: 10/5/23 • TATTOO: 14DAY
 H THE PROFIT 8426 ET
BK RED RIVER H18 ET
 HAPP KOOL AID POINTS 1218 ET
 R LEADER 6964
KJ 482Y LEADING LADY 871E ET
 KJ 274S ROXY 482Y ET

CHURCHILL PILGRIM 632D ET
 RST CAT NST Y79D LADY 54B ET
 DELHAWK KAHUNA 1009 ET
 CRANE STYLE POINTS 945
 HYALITE ON TARGET 936
 R MISS REVOLUTION 1009
 KJ HVH 33N REDEEM 485T ET
 KJ 2054 MISTY 274S ET

CE	BW	WW	YW	DMI	SC	SCF	MM	MG	MCE
1.8	3.2	59	98	0.6	0.9	17.1	27	57	2.4
64%	61%	37%	28%	84%	61%	48%	49%	43%	47%
MCW	UDDR	TEAT	CW	FAT	REA	MARB	BMI\$	BII\$	CHB\$
102	1.20	1.20	69	0.022	0.44	-0.03	347	414	95
77%	52%	57%	55%	45%	50%	93%	59%	61%	93%

#33 DAY IF SWEET HITCHHIKER 12L ET

POLLED • AHA# 44518438 • DOB: 9/23/23 • TATTOO: 25LDAY
 ECR WHO MAKER 210 ET
T/R BPF AMERICANCLASSIC 561CET
 TFR PARIS 415 ET
 R LEADER 6964
KJ 482Y LEADING LADY 871E ET
 KJ 274S ROXY 482Y ET

DKF RO CASH FLOW 0245 ET
 RV GOLDEN LADY 5064
 LAGRAND RELOAD 80P ET
 CRR D03 COTTON 356
 HYALITE ON TARGET 936
 R MISS REVOLUTION 1009
 KJ HVH 33N REDEEM 485T ET
 KJ 2054 MISTY 274S ET

CE	BW	WW	YW	DMI	SC	SCF	MM	MG	MCE
-4.0	5.3	63	101	0.3	0.6	14.5	31	63	-0.6
95%	93%	21%	22%	47%	88%	74%	24%	18%	82%
MCW	UDDR	TEAT	CW	FAT	REA	MARB	BMI\$	BII\$	CHB\$
123	1.20	1.10	73	0.022	0.53	-0.05	326	394	104
97%	52%	82%	39%	45%	31%	95%	72%	72%	79%

LOT 33



There are 3 things you can expect when you spend time with Jason Day: suspect driving skills, good times, and good stock. The guy is getting after it, and raising some top notch show cattle. Lot 33 has been a favorite of many early visitors. Her build is awesome, she is extra bold and stout, and possesses a look of quality. The American Classic cattle have won as much as any lately. I wouldn't bet against her.

TERMS & conditions

TERMS Cash or check. Each animal to be sold to the highest bidder. The auctioneer shall settle any disputes as to bids. All cattle are to be paid for by the purchasers during or immediately after the sale and will not be released until settlement has been made. Each animal will be at the purchaser's risk immediately after the animal is sold. *Innisfail Farm retains the right to two successful flushes on each female at seller's expense and buyer's convenience. Innisfail Farm retains 1/3 semen interest on all bull lots.*

REGISTRATION CERTIFICATES Registration certificates of the animals will be transferred to the buyer at the seller's expense. All calves born before the sale will be registered by the seller. All calves born after will be registered by the buyer. Each buyer must be sure to give the clerk his proper name and address for making transfers. AI certificates will NOT be furnished by the seller on females carrying the service of non-owned AI sires.

EPDS The EPDs listed herein are as reported by the AHA and are from April 3, 2024 evaluation. We will not be responsible for changes in EPDs or if these cattle do not perform as indicated by their estimated EPDs.

HEALTH All cattle selling will have interstate health charts required for shipping into other sections of the U.S. All females who are old enough are officially calfhood vaccinated.

MAIL OR PHONE BIDS Mail or phone order bids may be handled by the owners or any of the sale staff.

ANNOUNCEMENTS Announcements at the sale ring by the owners or the auctioneer concerning the cattle will take precedence over statements in the sale catalog.

LIABILITY All persons who attend the sale do so at their own risk, and the owners and sale manager assume no liability, legal or otherwise, for any accidents which may occur. Lowderman Auction Services acts only as agents for the seller and have no responsibilities other than those involved in conducting the sale.

BREEDING GUARANTEE Animals sold in this sale are guaranteed by the owners to be breeders, provided they are properly handled and cared for by the purchaser. If any fails to breed, the seller must be notified by Jan. 1, 2023 and for open heifers by July 1, 2023, otherwise the animal is no longer guaranteed in any way. If animal is in sound, healthy condition, buyer may return it to seller, who shall have six months to test it and then, if the animal proves to be a non-breeder, a satisfactory exchange will be made or purchase price refunded. Every known blemish will be called before the animal is sold and no animal will knowingly be sold that is not sound in any way. Any changes in breeding dates will be announced sale day. Any female selling with calf at side is considered to be a breeder with no further guarantee in this regard.

INSURANCE Insurance will be available.

TRUCKING Trucking will be available.







81

Thank you
FOR YOUR INTEREST
IN THE BETWEEN THE BRANDS SALE
HEREFORD DIVISION



BETWEEN
the BRANDS

PARTISOVER RANCH · INNISFAIL FARM

FLIP YOUR CATALOG

TO VIEW THE ANGUS OFFERING



BETWEEN
the BRANDS

PARTISOVER RANCH · INNISFAIL FARM

SUNDAY, MAY 5, 2024

2 PM EASTERN · MADISON, GEORGIA

the ANGUS *offering*



A BRAND BUILT ON DECADES OF
character, common sense
& COMMITMENT

SATURDAY, MAY 4
VIEWING OF CATTLE ALL DAY
7:00 PM - COMPLIMENTARY DINNER

SUNDAY, MAY 5
VIEWING OF CATTLE ALL DAY
12:30 PM - COMPLIMENTARY LUNCH
2:00 PM EASTERN - SALE TIME!

WELCOME

We hope you will consider this your invitation to the 1st Annual Between the Brands sale. We are truly excited about this event along with some of our dearest friends at Innisfail Farm. We hope both Angus and Hereford breeders alike will join us to evaluate the cattle and enjoy food and fellowship on May 5th in Madison, Georgia.

The idea of Between The Brands was born back in December over the supper table at The Source Bull Sale when I said to my good friend Whitey Hunt, we should have a sale together. Over the next few months, the wheels started turning, and everyone jumped on board with this unique concept. We truly could not have picked better friends to have this event with. Whitey and I have been friends since college, and the Hunts have been taking my money in the feed and fertilizer business for as long as I remember. You will not find better people to do business with. The addition of Breck and Kacie Debnam to their program has taken them to the next level, and we are so thankful to have them in Georgia. We cannot say thank you to them enough for hosting this event at their farm.

Since our Share the Herd sale in 2014, we have been focusing on rebuilding our Angus cow herd. What started as a three-year project has turned into a ten-year adventure, and we could not be more pleased with the results. Partisover philosophy differs from the popular thought that turning generations always results in perceived progress. In the history of Partisover, there have been five to six game-changing cows. Partisover Burgess 133 is one of those cows. When asked what is your favorite sire group? My wife would respond, "Whatever we flushed 133 to." These cattle have dominated our herd for the past twelve years. We could not make enough of them. Their look, structure, balance, power, and undeniable producing ability are unmatched at Partisover. Every lot of this offering traces back to 133. I didn't intend to dig this deep, but Johnnie and Callie kind of teamed up against me. There are nine direct 133 daughters sired by five different bulls. We could not have selected a better representation of the current era of Partisover.

My dad always said, "Everyone has access to the same bulls, but it's the one who has the cows that gets ahead." May 5th is your opportunity to get the kinds of cows he was talking about. For the last 50-plus years, we have focused on breeding high performance cattle that are good uddered, good footed, and good looking. Through the years, even before it was on trend, we have prioritized keeping excellent performance records. Partisover cows have to earn their keep on grass with little supplement. With the ever-changing trends and extremes that are often chased within our industry, we believe these are the kind of cows that will keep you grounded to a common sense approach.

This sale would not be possible without the help of many people. First and foremost, my wife, children and grandchildren. I am so proud of them and everything they have accomplished. Secondly, one of my best friends and an incredible stockman, Johnnie Johnson. I am not sure if I'll ever forgive him for talking me into selling these cows. Callie Akins keeps me organized and on my toes. Someone even called her my "Siri". If I don't answer my phone, just call her.

As always, we'll make two guarantees. 1) If we know it, you'll know it. If we know the sex of a calf in utero, you'll know it too. 2) All birth dates, birth weights, performance records, breeding dates, pregnancy status, and pictures are guaranteed to represent the cattle selling 100%. We know no other way. Please feel free to reach out with any questions, and we hope to see you "Between The Brands" on May 5th.

Thanks,

RANDY DANIEL
www.partisoverranch.com

sale INFORMATION

LOCATION

INNISFAIL FARM

1780 Innisfail Ln, Madison, Georgia

SALE STAFF

Cody Lowderman, *Auctioneer*.....(309) 313-2171
David Gazda, *Angus Journal*.....(706) 296-7846
Bobby Singleton, *Singleton Marketing & Consulting*(785) 221-3284
Noah Benedict, *Ring Staff and Sale Promotion*.....(740) 501-1508
Johnnie Johnson, *Consultant*.....(402) 720-8797
Todd Alford, *Consultant*.....(706) 207-9454
Lance Cline, *Consultant*.....(785) 564-1744
Leroy Lane, *Consultant*.....(912) 536-0523
Daniel Reynolds, *Consultant*.....(270) 528-6275

SALE DAY PHONES

Randy Daniel.....(706) 614-0496
Callie Akins.....(229) 237-4236

ACKNOWLEDGEMENTS

Dr. Tyson Strickland, *Vet*.....(706) 395-8080
Dugger Tent.....*Sale Tent*
John Reasor.....*Photography*
Melissa Grimmel Schaake.....*Catalog & Promotional Design*
Dogwood Genetics.....*Embryologist*
Smitty Lamb.....*Director, AAA Board of Directors*
Wilkes Barnett.....*President, Georgia Angus Association*

TRUCKING

Todd Edwards.....(706) 844-3778
Wyatt Debnam.....(443) 289-0242

ONLINE BIDDING



HOTELS

HOLIDAY INN EXPRESS

1041 Ramada Way, Madison, Georgia
(706) 342-9190

HAMPTON INN

2012 Eatonton Rd, Madison, Georgia
(706) 342-9003



PARTISOVER *History*

The first question about Partisover is, “Where did the name come from?” We purchased the piece of land, now Partisover, in 1971 while I was at UGA. I probably spent more time at the new place, clipping sale cows or going to some show than I went to school. I liked to judge, or I would probably never have finished school. I had a really good year on the judging team, and letters started coming from the judging powers wanting me to go to graduate school and coach. My head was swelling, so I took those letters to Pop’s office and asked what he thought. His reply was, “It’s hard to tell the ones that can’t from the ones that won’t.” I didn’t want to go to school and realized that those schools didn’t just want me because I could judge, but because I was Dan Daniel’s son the assumption was that I’d be interested in academia. Pop asked that day, “What do you really want to do?” My answer was I really wanted to run cows. His response was, “That’s great, but the Party’s Over.” If we had spelled it that way, it would have eliminated a lot of conversation over the years. The upside-down wineglass brand is self-explanatory, but it is not necessarily accurate all the time.

If ever there was a privileged background in this business it was mine. We were kids in Oklahoma while Pop was in graduate school at OSU.

He was the only PhD student working at the beef barn because he wanted to learn from the best. Doing chores at 5 a.m., collecting liver biopsies and blood samples in the afternoon while doing his PhD research. Five years at Panhandle State University then back to OSU to finish PhD, and back to PSU as Dean then. Then, Dr. Bob Long who was in graduate school with Pop hired him to move to Georgia. Jake White was already here and his family have been our lifelong friends. Pop hired Orville Sweet, Curly Cook, and Clyde Triplett, all were Okies, and they went to work. I grew up around these guys as well as Dr. Bob Totusek, Pop’s lifelong friend and mentor, and Dr. Don Good, where we’d go on weekends hauling cows back and forth to breed to KSU bulls. These guys were the iconic figures of the industry, and I just knew them as the people we spent all of our time with. These are the same friends that nominated Pop to be hung in the Saddle & Sirloin portrait collection, the most prestigious recognition in the livestock industry. His 1st round selection is something we are certainly proud of.

When I finished school and started judging a little, Pop told me that

I’d get a chance to judge everything if I’d forget all of that crap that we talked in college. Be humble, honest, and fair, and always remember that the show is not about the judge. Pop said to talk to people as if they were in your lot and just describe the cattle. Pop loved to judge, and was darn good at it, especially juniors, and passed that on to me. One of the highlights of my judging career was judging the steers at Fort Worth and Pop went with me to the show that he had judged thirty years before. Special memory! Judging let me go to 40 states, Brazil, Argentina, Uruguay, and left me with true friends everywhere. For that, I’ll be forever grateful.

We have truly been blessed to have lots of talented young people over the years.

Wes Hopper: Wes was our first employee. Cows weren’t Wes’ forte, but work was. Wes essentially built what little infrastructure we had.

Frank Jackson: Frank has become a superstar in this business, and we are really proud. Frank started helping us when he was 14 and was a sponge who loved this business. We could not be more proud of this guy.

Grant Johnson: Of course, Grant was a seasoned veteran when he came to Partisover. We were lucky enough to have him for 2-3 years before he moved with our cows to Oklahoma. Grant is a treasured friend.

Chandler Akins, Jacob Holmes, and Stewart Harbin: We were so fortunate that these guys after attending junior colleges out West decided to come back to UGA. All 3 are very talented. We had some great sales as well as great times while they were here. These were some of the most enjoyable times at Partisover.

Callie Akins: Pop taught Callie and Chandler’s Dad when Parrish was at UGA. Parrish has been a great friend, but even better because he let us have both of his kids. We sold them calves as juniors, followed their collegiate careers, and were lucky enough to have both at Partisover.

Callie went to Butler, then to OSU to judge. She was extremely successful judging at both places as well as an academic superstar. Callie thought she wanted to be a banker, but couldn’t deny her cow addiction. With Callie around, it’s like a judging contest every day. She keeps me on my toes and has been a huge asset to Partisover.



Todd Alford: Todd grew up with us and has been a true friend all his life. Todd is a loyal and valued friend as well as an incredible stockman.

Mike McGuire: Mike moved to Athens when his Dad was on Pop's staff at UGA. Mike has been one of my best friends since he was young. Mike is another of the truly talented guys we have been blessed to call a friend.

Johnnie Johnson: I've fought with this guy more than anymore I've ever known. He and Callie are responsible for stealing this incredible set of cattle for this sale. Johnnie can be beyond frustrating, but undeniably one of the all-time talents. All of the above is absolutely true, but there is nobody I respect more.

In the early 70's and while doing good to just hold on to the place, Pop said, "Everybody is going to have access to the same sires eventually so the guy that has the cows will be the one that gets ahead." This has been our philosophy since that day. Because of our Oklahoma roots, our search took us there to study the Emulous cattle that were really popular with performance advocates long before that concept was readily accepted in purebred circles. We went everywhere to study those cattle. We concluded that Bob Hartley at Spur Ranch had the kind of cattle that we wanted and that Emulous Master 209 was the best at Spur.

After purchasing 40 females for us and three others. Pop asked Bob to see his elite replacements. Somehow, Pop talked Bob into selling us 3116, the foundation Burgess female at Partisover. She was exactly what we wanted then and 50-plus years later still is. Every cow on this ranch with three exceptions traces back to that cow. Feminine, broody, the right size, perfected uddered, big bodied, fertile, and would outperform anything we had ever seen. We could not propagate 3116 fast enough until embryo transfer came along in the next generation.

In the next 25 years, while the frame game dominated the scene, we continued to use the performance "cow maker sires". You'll study a ten-generation pedigree and never find that "poison" sire. I would have probably jumped ship at times but my partner would keep me grounded. When producers started to pay attention to the new tools available our cows started to get a lot of attention. I clipped sale cattle, traded steers, sold equipment, and anything else to pay the bills while Beth and Pop did the day-to-day while raising two great kids. We started getting interest, visits, and opportunities we had never had before. My friend

Randy White was at Austin Land and Cattle in Oklahoma, and he told me before we made a move that he would like to bring Guy Austin to look at Partisover. We sold them the entire herd while maintaining ½ interest in the top twelve cows. Guy and Randy were great, flushed the heck out of those cows, and we rebuilt from there. Today, all of those Burgess cows trace back to those twelve.

At Partisover collecting performance data was never an option. As far as I know, we've never had cattle here that did not have a complete set of records. When you grow up listening to your Dad teaching the value of performance programs, you are programmed yourself. My favorite thing as a kid was going with Pop to weigh and grade BCIA calves. That complete data that we'd always kept and used put us in a position when the breed started to recognize the value. Where we probably vary from the norm now is in how we use it. For us to build a cow that will meet our needs on grass, it doesn't allow us to use bulls that are simply too big or cattle that will outgrow our environment.

We loved the Right Time 24J daughters. Grassmaster was our favorite of his sons. My friends thought I was nuts but we used him and wished we would have used him more. He sired 133, the most unique specimen we have ever produced. Partisover philosophy differs from the popular thought that turning generations always results in perceived progress. In the history of Partisover, there have been five to six game-changing cows. Had we chosen to have done what is popular today, we would have never identified these cows much less have used them to solidify our base. 133 is that cow in this chapter of the Partisover story. Over the last twelve years, her progeny have always stood out for their unique look, structure, balance, power, and undeniable producing ability. Every animal in this offering is a testament to her.

744 has proven herself to be another one of those game-changing cows for us. She has proven over the last several years to be as potent as her mother. She offers so many of the same things as her mother along with more relevant numbers that have been proven by progeny. She along with her progeny are just beginning to write their chapter of the Partisover story.

Some things simply need to be preserved. These cows have been 50 years in the making, and May 5th is your chance to help write the rest of the story.





The ANGUS
OFFERING

LOT 101



101 PARTISOVER BURGESS 744

ANGUS • AAA# 18923879 • DOB: 09/04/16 • TATTOO: 744

RITO 707 OF IDEAL 3407 7075
S A V RESOURCE 1441
 S A V BLACKCAP MAY 4136

R R RITO 707
 IDEAL 3407 OF 1418 076
 S A V 8180 TRAVELER 004
 S A V MAY 2397

SINCLAIR GRASS MASTER
PARTISOVER BURGESS 133
 PARTISOVER BURGESS 8112

BT RIGHT TIME 24J
 N BAR PRIMROSE Y3051
 S A V 8180 TRAVELER 004
 PARTISOVER/ALEXIS BURGESS 238

CED	BW	WW	YW	YH	SC	HP	MILK
2	2.8	73	140	0.5	1.2	8.4	28
58%	63%	26%	8%	51%	20%	84%	28%

DOC	CLAW	ANGL	HS	MARB	RE	\$M	\$B	\$C
15	0.43	0.33	0.67	0.25	1.03	52	141	235
69%	26%	3%	76%	62%	9%	75%	40%	50%



Selling ½ interest, no possession. Open ready to flush. Averages 13 good embryos per flush. This is the kind of opportunity that rarely comes from us. When we find one of these game-changing cows, we typically hoard them and their daughters. However, we are committed to making this a one-of-a-kind event, so here is a one-of-a-kind opportunity. It's hard to put into words the impact 744 has had in the last several years. When she and her sisters came along, she was the phenotypic standout and when the genomics came back she took it to another level for us. She's added another level of power and performance to our cow herd. She has done so without sacrificing the classic look of a Partisover female. She has 15 daughters in production, and they have proven to be beautiful uddered, good footed, and definite producers. You'll hear more about her sons throughout this offering, but to keep it short, they are impressive. The saying goes, the proof is in the pudding. Well for 744, the proof is in her progeny that you'll see over the next several pages. We want a partner that wants to create something special.

The CONFIDENCE PLUS X 744'S

There is not enough room to tell you about all the good things the Confidence Plus x 744 progeny are doing. Just this past weekend, we heard rave reviews from the progeny of Partisover Deep Roots 126. Partisover Burgess 166 is making a name for herself as a donor for Daniel and Lindsey Reynolds of Legacy Farms in Kentucky. Partisover Soul 048 roams the pastures of Griggsville, IL for Musgrave Angus, and the sisters that reside in Colbert are truly the future of the ranch. There is no doubt Lot 102 & 103 come from a famous group of siblings, but they certainly hold their own in that group. They have always been standouts for their incredible fleshing ability, gorgeous look, and nearly perfect udders. We are confident in this pedigree. It is not often females of this pedigree leave Colbert, so pay attention here.



LOT 102



LOT 102A

Lot 102 PARTISOVER BURGESS 154

ANGUS • AAA# 20062761 • DOB: 09/01/20 • TATTOO: 154

CONNEALY CONFIDENCE 0100
CONNEALY CONFIDENCE PLUS
 ELBANNA OF CONANGA 1209

CONNEALY TOBIN
 BECKA GALA OF CONANGA 8281
 CONNEALY CONSENSUS
 ELBASTA OF CONANGA 9703

S A V RESOURCE 1441
PARTISOVER BURGESS 744
 PARTISOVER BURGESS 133

RITO 707 OF IDEAL 3407 7075
 S A V BLACKCAP MAY 4136
 SINCLAIR GRASS MASTER
 PARTISOVER BURGESS 8112

CED	BW	WW	YW	YH	SC	HP	MILK
6	1.3	73	143	-0.2	0.81	10.4	27
21%	35%	36%	8%	99%	40%	77%	42%

DOC	CLAW	ANGL	HS	MARB	RE	\$M	\$B	\$C
21	0.37	0.36	0.65	0.66	1.18	72	152	269
35%	10%	6%	76%	33%	3%	20%	25%	20%



154 was flushed once last fall and produced 6 good embryos. Full sister to Lot 103. She sells safe in calf to Stellpflug Hoffman Rise Above with a bull calf due September 20th.

Lot 102A PARTISOVER BURGESS 475

ANGUS • AAA# 20885418 • DOB: 09/28/23 • TATTOO: 475

MOHLEN SUBSTANTIAL 272
SITZ STELLAR 726D
 SITZ PRIDE 200B

BENFIELD SUBSTANCE 8506
 MOHLEN GLYN MAWR ELBA 1758
 CONNEALY FINAL PRODUCT
 SITZ PRIDE 308Y

CONNEALY CONFIDENCE PLUS
PARTISOVER BURGESS 154
 PARTISOVER BURGESS 744

CONNEALY CONFIDENCE 0100
 ELBANNA OF CONANGA 1209
 S A V RESOURCE 1441
 PARTISOVER BURGESS 133

CED	BW	WW	YW	YH	SC	HP	MILK
3	2.4	84	153	0.2	0.08	14.8	24
45%	43%	22%	14%	89%	91%	18%	46%

DOC	CLAW	ANGL	HS	MARB	RE	\$M	\$B	\$C
13	0.32	0.4	-0.02	0.42	1.06	69	138	248
70%	11%	17%	1%	63%	8%	35%	60%	55%



This Stellar is the kind that gets us excited. 154 had twin heifer calves this fall, and 475 won the lottery to get to stay with her mama. If Callie was pointing out a heifer calf this winter, you could put all your money on it being 475. This one is quick to grab your attention with look and incredible body for a young heifer calf. She packs a ton of performance into the right size frame for our environment. We dearly love this one. If we weren't committed to offering our best, this one would be hidden somewhere on the back forty.

LOT 103



FULL SISTERS TO LOTS 102 & 103

103 PARTISOVER BURGESS 010

ANGUS • AAA# 19792776 • DOB: 08/20/19 • TATTOO: 010
 CONNEALY CONFIDENCE 0100 CONNEALY TOBIN
CONNEALY CONFIDENCE PLUS BECKA GALA OF CONANGA 8281
 ELBANNA OF CONANGA 1209 CONNEALY CONSENSUS
 ELBASTA OF CONANGA 9703
 S A V RESOURCE 1441 RITO 707 OF IDEAL 3407 7075
PARTISOVER BURGESS 744 S A V BLACKCAP MAY 4136
 PARTISOVER BURGESS 133 SINCLAIR GRASS MASTER
 PARTISOVER BURGESS 8112

CED	BW	WW	YW	YH	SC	HP	MILK	
5	1.4	72	134	0.1	0.22	9	25	
28%	23%	26%	14%	86%	79%	84%	59%	
DOC	CLAW	ANGL	HS	MARB	RE	\$M	\$B	\$C
32	0.4	0.33	0.74	0.77	0.75	78	154	278
5%	17%	6%	81%	29%	26%	10%	25%	15%

010 was flushed once as a two-year-old, and she produced 18 good embryos. Full sister to Lot 102. She sells safe in calf to Bear Mtn North Star with a bull calf due September 29th.



The JUSTIFIED X 744'S

The Justified x 744 mating has become known for the powerhouse bulls it produced. Most notably, Partisover Tradition 241. One of those outstanding sons sells here as Partisover Heritage 257. We have used him on our cows for the last two years and have been very pleased with the results. We used KG Justified heavily because of the reports of his outstanding daughters, and we have seen the same result in our herd. They are moderate size, beautiful uddered females that look like they will last a long time. Here is your opportunity to tie into their first progeny with this beautiful Rainfall heifer or make your own with Partisover Heritage!

LOT 104



104 PARTISOVER BURGESS 402

ANGUS • AAA# 20889240 • DOB: 08/08/23 • TATTOO: 402

COLEMAN CHARLO 0256

S A V RAINFALL 6846

S A V BLACKCAP MAY 4136

KG JUSTIFIED 3023

PARTISOVER BURGESS 272

PARTISOVER BURGESS 744

O C C PAXTON 730P

BOHI ABIGALE 6014

S A V 8180 TRAVELER 004

S A V MAY 2397

CONNELLY JUDGMENT

KG MISS MAGIC 1443

S A V RESOURCE 1441

PARTISOVER BURGESS 133

CED	BW	WW	YW	YH	SC	HP	MILK
8	1	60	115	-0.1	1.39	15.2	28
25%	33%	88%	56%	96%	19%	21%	43%

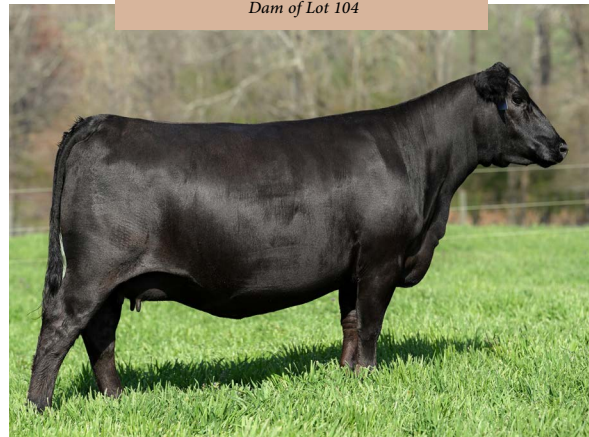
DOC	CLAW	ANGL	HS	MARB	RE	\$M	\$B	\$C
18	0.36	0.42	0.48	0.73	0.64	96	136	272
51%	10%	31%	55%	34%	47%	1%	65%	30%

Rainfall x Justified x 744 - You could not make a pedigree that sums up the last several years of our mating decisions more accurately than this beauty. There are no guessing games when it comes to this one, she combines the classic Partisover look with loads of body and performance.



PARTISOVER BURGESS 272

Dam of Lot 104



LOT 105



PARTISOVER DEEP ROOTS 126
Maternal brother owned with Elrod Farms and Predestined Cattle Company

105 PARTISOVER HERITAGE 257

ANGUS • AAA# 20375436 • DOB: 09/04/21 • TATTOO: 257
 CONNEALY JUDGMENT CONNEALY CONSENSUS 7229
KG JUSTIFIED 3023 ENTRINE OF CONANGA 9876
 KG MISS MAGIC 1443 SITZ WISDOM 481T
 KG MISS MAGIC 3528
 S A V RESOURCE 1441 RITO 707 OF IDEAL 3407 7075
PARTISOVER BURGESS 744 S A V BLACKCAP MAY 4136
 PARTISOVER BURGESS 133 SINCLAIR GRASS MASTER
 PARTISOVER BURGESS 8112

CED	BW	WW	YW	YH	SC	HP	MILK
2	1.3	74	133	0.5	1.61	18	27
72%	51%	31%	23%	40%	10%	3%	56%

DOC	CLAW	ANGL	HS	MARB	RE	\$M	\$B	\$C
15	0.47	0.41	0.66	0.64	0.69	73	134	247
79%	28%	12%	59%	31%	45%	25%	65%	55%



PARTISOVER TRADITION 241
Full brother owned with Bar B Ranch, Traditions Cattle Company, and Oleo Ranch



PARTISOVER SOUL 048
Owned with Musgrave Angus

pick of the RESILIENT X 744 HEIFER CALVES

When we decided to be a part of Between The Brands and to offer ½ interest in 744, we knew we had to offer some young, exciting progeny from her. After studying them for several months, we could not decide which of these sisters to offer. So when Johnnie came, he suggested why not sell pick of them. Resilient is extremely popular across the nation, and 744 is very popular at Partisover. Study their EPD's, make your notes, and come take your pick on May 5th.

pick

LOT 106A



106a PARTISOVER BURGESS 471

ANGUS • AAA# 20882474 • DOB: 09/25/23 • TATTOO: 471
 SITZ STELLAR 726D MOHNNEN SUBSTANTIAL 272
SITZ RESILIENT 10208 SITZ PRIDE 200B
 SITZ MISS BURGESS 1856 SITZ TOP GAME 561X
 SITZ MISS BURGESS 4381
 S A V RESOURCE 1441 RITO 707 OF IDEAL 3407 7075
PARTISOVER BURGESS 744 S A V BLACKCAP MAY 4136
 PARTISOVER BURGESS 133 SINCLAIR GRASS MASTER
 PARTISOVER BURGESS 8112

CED	BW	WW	YW	YH	SC	HP	MILK
3	2.6	93	163	0.8	1.26	14.3	24
51%	52%	4%	6%	25%	24%	21%	79%

DOC	CLAW	ANGL	HS	MARB	RE	\$M	\$B	\$C
10	0.42	0.41	0.29	0.39	0.85	64	141	247
87%	45%	34%	15%	49%	10%	50%	55%	55%



LOT 106B



106b PARTISOVER BURGESS 477

ANGUS • AAA# 20882475 • DOB: 09/29/23 • TATTOO: 477
 SITZ STELLAR 726D MOHNNEN SUBSTANTIAL 272
SITZ RESILIENT 10208 SITZ PRIDE 200B
 SITZ MISS BURGESS 1856 SITZ TOP GAME 561X
 SITZ MISS BURGESS 4381
 S A V RESOURCE 1441 RITO 707 OF IDEAL 3407 7075
PARTISOVER BURGESS 744 S A V BLACKCAP MAY 4136
 PARTISOVER BURGESS 133 SINCLAIR GRASS MASTER
 PARTISOVER BURGESS 8112

CED	BW	WW	YW	YH	SC	HP	MILK
5	1.5	97	171	1.1	0.89	10.8	26
44%	46%	5%	3%	19%	42%	62%	70%

DOC	CLAW	ANGL	HS	MARB	RE	\$M	\$B	\$C
16	0.42	0.4	0.49	0.56	0.96	56	156	258
45%	21%	15%	43%	43%	15%	75%	35%	45%



LOT 106C



106c PARTISOVER BURGESS 481

ANGUS • AAA# 20885431 • DOB: 10/01/23 • TATTOO: 481
 SITZ STELLAR 726D MOHNNEN SUBSTANTIAL 272
SITZ RESILIENT 10208 SITZ PRIDE 200B
 SITZ MISS BURGESS 1856 SITZ TOP GAME 561X
 SITZ MISS BURGESS 4381
 S A V RESOURCE 1441 RITO 707 OF IDEAL 3407 7075
PARTISOVER BURGESS 744 S A V BLACKCAP MAY 4136
 PARTISOVER BURGESS 133 SINCLAIR GRASS MASTER
 PARTISOVER BURGESS 8112

CED	BW	WW	YW	YH	SC	HP	MILK
-1	2.8	92	156	0.9	0.67	14.4	37
89%	77%	4%	16%	22%	65%	21%	6%

DOC	CLAW	ANGL	HS	MARB	RE	\$M	\$B	\$C
17	0.33	0.3	0.19	0.52	0.86	71	149	264
33%	12%	2%	3%	33%	25%	30%	45%	40%



of the heifer calves

LOT 106D

106 PARTISOVER BURGESS 485

ANGUS • AAA# 20882473 • DOB: 10/04/23 • TATTOO: 485

SITZ STELLAR 726D
SITZ RESILIENT 10208
SITZ MISS BURGESS 1856

MOHLEN SUBSTANTIAL 272
SITZ PRIDE 200B
SITZ TOP GAME 561X
SITZ MISS BURGESS 4381

S A V RESOURCE 1441
PARTISOVER BURGESS 744
PARTISOVER BURGESS 133

RITO 707 OF IDEAL 3407 7075
S A V BLACKCAP MAY 4136
SINCLAIR GRASS MASTER
PARTISOVER BURGESS 8112

CED	BW	WW	YW	YH	SC	HP	MILK
-2	3.9	95	168	0.8	0.69	12.1	29
74%	92%	5%	5%	38%	60%	62%	47%

DOC	CLAW	ANGL	HS	MARB	RE	\$M	\$B	\$C
9	0.36	0.28	0.72	0.68	0.9	63	170	283
82%	18%	1%	79%	26%	20%	55%	25%	25%

ANGUSCS
Powered by iStock



LOT 106E

106 PARTISOVER BURGESS 486

ANGUS • AAA# 20882476 • DOB: 10/05/23 • TATTOO: 486

SITZ STELLAR 726D
SITZ RESILIENT 10208
SITZ MISS BURGESS 1856

MOHLEN SUBSTANTIAL 272
SITZ PRIDE 200B
SITZ TOP GAME 561X
SITZ MISS BURGESS 4381

S A V RESOURCE 1441
PARTISOVER BURGESS 744
PARTISOVER BURGESS 133

RITO 707 OF IDEAL 3407 7075
S A V BLACKCAP MAY 4136
SINCLAIR GRASS MASTER
PARTISOVER BURGESS 8112

CED	BW	WW	YW	YH	SC	HP	MILK
1	1.4	68	120	0.4	1.78	14.8	26
52%	27%	55%	76%	86%	7%	10%	56%

DOC	CLAW	ANGL	HS	MARB	RE	\$M	\$B	\$C
17	0.29	0.33	0.53	0.34	0.75	79	122	237
43%	2%	10%	53%	86%	26%	15%	80%	65%

ANGUSCS
Powered by iStock



LOT 106F

106 PARTISOVER BURGESS 491

ANGUS • AAA# 20885430 • DOB: 10/07/23 • TATTOO: 491

SITZ STELLAR 726D
SITZ RESILIENT 10208
SITZ MISS BURGESS 1856

MOHLEN SUBSTANTIAL 272
SITZ PRIDE 200B
SITZ TOP GAME 561X
SITZ MISS BURGESS 4381

S A V RESOURCE 1441
PARTISOVER BURGESS 744
PARTISOVER BURGESS 133

RITO 707 OF IDEAL 3407 7075
S A V BLACKCAP MAY 4136
SINCLAIR GRASS MASTER
PARTISOVER BURGESS 8112

CED	BW	WW	YW	YH	SC	HP	MILK
9	-0.2	80	141	0.6	1.41	16.1	31
16%	16%	17%	22%	43%	7%	13%	31%

DOC	CLAW	ANGL	HS	MARB	RE	\$M	\$B	\$C
20	0.4	0.35	0.47	0.43	0.73	91	122	249
51%	24%	9%	29%	74%	19%	2%	80%	55%

ANGUSCS
Powered by iStock



frozen genetic OFFERING

If you're brave enough to enter the debate of which Confidence Plus x 744 is the best, you'll soon find out 140 always has RD in her corner. It's pretty easy to see why, she's beautiful to look at and is quickly becoming an outstanding producer. We love our Stellar and Rainfall progeny, and it took quite a bit of arm-twisting to get these genetic opportunities added to the offering.



PARTISOVER BURGESS 140
Dam of Lots 107 & 108

#107 HEIFER CALF PREGNANCY

MOHNEN SUBSTANTIAL 272
SITZ STELLAR 726D X PARTISOVER BURGESS 140
SITZ PRIDE 200B PARTISOVER BURGESS 744

CED	BW	WW	YW	YH	SC	HP	MILK
3	1.3	70	127	0.2	0.85	8.7	20
75%	50%	30%	25%	85%	50%	85%	90%

DOC	CLAW	ANGL	HS	MARB	RE	\$M	\$B	\$C
17	0.29	0.34	0.36	0.67	0.8	67	109	262
60%	1%	3%	25%	55%	35%	40%	90%	40%

Parent Average EPDs

Heifer calf pregnancy due September 5th in a registered Angus recip.

#108 EMBRYO PACKAGE

COLEMAN CHARLO 0256
S A V RAINFALL 6846 X PARTISOVER BURGESS 140
S A V BLACKCAP MAY 4136 PARTISOVER BURGESS 744

CED	BW	WW	YW	YH	SC	HP	MILK
4	1.6	63	119	-0.2	0.88	11.0	25
70%	60%	50%	35%	95%	50%	65%	60%

DOC	CLAW	ANGL	HS	MARB	RE	\$M	\$B	\$C
15	0.32	0.33	0.59	0.71	0.94	81	148	273
70%	3%	2%	65%	50%	25%	10%	45%	35%

Parent Average EPDs

Selling 3 Grade 1 embryos. Guaranteed one pregnancy if work is done by a certified embryologist.

#109

EMBRYO PACKAGE

HOFFMAN STAGECOACH 1908 CONNEALY CONFIDENCE PLUS
 STELLPFLUG HOFFMAN RISEABOVE X PARTISOVER BURGESS 167
 HOFFMAN 3210 RITA LADY 0256 PARTISOVER BURGESS 744

CED	BW	WW	YW	YH	SC	HP	MILK	
9	1.4	80	136	0.5	0.62	14.1	28	
30%	55%	10%	15%	60%	65%	25%	35%	
DOC	CLAW	ANGL	HS	MARB	RE	\$M	\$B	\$C
18	0.4	0.34	0.54	0.81	0.76	93	162	303
55%	15%	3%	55%	40%	40%	2%	30%	15%

Parent Average EPDs

Here is just another example of the potency of the Confidence Plus x 744's. As bred heifers, 167 was Callie's pick of these sisters. Rise Above was the hottest game in town when we were breeding last fall, and we are excited to see the outcome of this exciting mating. Selling 3 Grade 1 embryos. Guaranteed one pregnancy if work is done by a certified embryologist.



PARTISOVER BURGESS 167
 Dam of Lot 109

#110

EMBRYO PACKAGE

SITZ STELLAR 726D CONNEALY CONFIDENCE PLUS
 SITZ BARRICADE 632F X PARTISOVER BURGESS 161
 SITZ BARBARAMERE NELL 765D PARTISOVER BURGESS 744

CED	BW	WW	YW	YH	SC	HP	MILK	
5	2.8	79	140	0.3	0.6	12.8	23	
60%	85%	15%	10%	75%	65%	40%	75%	
DOC	CLAW	ANGL	HS	MARB	RE	\$M	\$B	\$C
16	0.35	0.33	0.41	0.72	0.79	72	166	286
65%	4%	2%	35%	50%	35%	30%	25%	20%

Parent Average EPDs

The same song just a different verse when it comes to these sisters. 161 is a true calf-raiser. She outdid herself as a two-year-old and will flat work hard and get it done. Our Barricades are some of the most exciting calves of our calf crop this year. This is sure to be a hit. Selling 3 Grade 1 embryos. Guaranteed one pregnancy if work is done by a certified embryologist.



PARTISOVER BURGESS 161
 Dam of Lot 110

#111

EMBRYO PACKAGE

SQUARE B TRUE NORTH 8052 SITZ STELLAR 726D
 BEAR MTN NORTH STAR X PARTISOVER BURGESS 1127
 BEAR MTN FOREVER LADY 0579 PARTISOVER BURGESS 744

CED	BW	WW	YW	YH	SC	HP	MILK	
11	0.2	77	143	0.3	1.09	11.8	22	
15%	30%	15%	10%	75%	35%	55%	80%	
DOC	CLAW	ANGL	HS	MARB	RE	\$M	\$B	\$C
24	0.34	0.44	0.16	0.69	0.97	75	158	280
25%	4%	30%	4%	55%	15%	20%	35%	25%

Parent Average EPDs

If you've been to Partisover lately, you've probably fallen in love with 1127. This Stellar daughter has body, mass, and fleshing ability like we've never seen before. She's beautiful uddered, perfect footed, and is no doubt going to be a mainstay in the donor pen. What she lacks in marbling, North Star will make up for, and she has everything else you'll need. Selling 3 Grade 1 embryos. Guaranteed one pregnancy if work is done by a certified embryologist.



PARTISOVER BURGESS 1127
 Dam of Lot 111

The SKY HIGH X 133'S

The Sky High x 133 flush has been a huge part of the Angus rebuild here at Partisover. As prolific as they are, it is easy to make a lot of them and fast. They offer a little more size than the traditional Partisover females, but they complement it with an eye-catching look and worlds of body. Several of the sisters are making a name for themselves in other programs. Partisover Burgess 825 was the 26,000 high seller of From The Ground Up last year to Ed Rule at Shoal Creek Simmentals in MO, and another sister Partisover Burgess 838 resides with Brad Cox at Salacoa Cattle Company in GA. Don't miss out on these exciting sisters, but start saving to pay your flush bill because they'll break you!



LOT 112



PARTISOVER BURGESS 288
Daughter of Lot 112



PARTISOVER BURGESS 1130
Daughter of Lot 112



LOT 112A

Lot 112 PARTISOVER BURGESS 846

ANGUS • AAA# 19222101 • DOB: 09/02/17 • TATTOO: 846
 CONNEALY EARNAN 076E
 MUSGRAVE BIG SKY SAV PRIMROSE 786I
 MUSGRAVE SKY HIGH 1535 S A V 004 DENSITY 4336
 FLAG QUEEN W 00649 PLATTEMERE QUEEN W 660
 SINCLAIR GRASS MASTER BT RIGHT TIME 24J
 PARTISOVER BURGESS 133 N BAR PRIMROSE Y3051
 PARTISOVER BURGESS 8112 S A V 8180 TRAVELER 004
 PRTISOVER/ALEXIS BURGESS 238

CED	BW	WW	YW	YH	SC	HP	MILK
6	3.5	66	123	0.9	0.78	-0.5	32
62%	88%	52%	35%	24%	53%	100%	10%

DOC	CLAW	ANGL	HS	MARB	RE	\$M	\$B	\$C
12	0.41	0.45	0.38	0.2	0.7	23	126	186
81%	15%	37%	26%	75%	35%	95%	60%	90%

846 has averaged 21 good embryos on 3 flushes. She sells safe in calf to KG Justified with a bull calf due September 5th.



Lot 112a PARTISOVER BURGESS 483

ANGUS • AAA# 20885417 • DOB: 10/02/23 • TATTOO: 483
 BENFIELD SUBSTANCE 8506
 MOHNEN SUBSTANTIAL 272
 SITZ STELLAR 726D MOHNEN GLYN MAWR ELBA 1758
 SITZ PRIDE 200B CONNEALY FINAL PRODUCT
 SITZ PRIDE 308Y
 MUSGRAVE SKY HIGH 1535
 PARTISOVER BURGESS 846
 PARTISOVER BURGESS 133
 MUSGRAVE BIG SKY
 FLAG QUEEN W 00649
 SINCLAIR GRASS MASTER
 PARTISOVER BURGESS 8112

CED	BW	WW	YW	YH	SC	HP	MILK
7	-0.1	69	119	0.4	0.27	11.2	25
45%	37%	49%	45%	80%	77%	70%	57%

DOC	CLAW	ANGL	HS	MARB	RE	\$M	\$B	\$C
17	0.38	0.38	0.4	0.03	0.66	69	106	206
47%	17%	11%	33%	92%	37%	35%	95%	90%

We've always admired this one for her beautiful balance and silhouette, but as of late she has hit another gear and combined it with body and power. We believe these Stellar females are going to stay in style and be around for years to come. If you're looking for a donor cow in the making, look no further, her mother is as fertile as they come. We are confident, she'll be a true standout on sale day.



LOT 113



lot 113

PARTISOVER BURGESS 833

ANGUS • AAA# 19222097 • DOB: 09/01/17 • TATTOO: 833
 MUSGRAVE BIG SKY
MUSGRAVE SKY HIGH 1535
 FLAG QUEEN W 00649
 SINCLAIR GRASS MASTER
PARTISOVER BURGESS 133
 PARTISOVER BURGESS 8112
 CONNEALY EARNAN 076E
 SAV PRIMROSE 786I
 S A V 004 DENSITY 4336
 PLATTEMERE QUEEN W 660
 BT RIGHT TIME 24J
 N BAR PRIMROSE Y305I
 S A V 8180 TRAVELER 004
 PARTISOVER/ALEXIS BURGESS 238

CED	BW	WW	YW	YH	SC	HP	MILK	
7	1.9	63	109	0.5	0.08	6	28	
56%	51%	47%	70%	65%	80%	96%	32%	
DOC	CLAW	ANGL	HS	MARB	RE	\$M	\$B	\$C
16	0.48	0.45	0.12	0.46	0.61	60	119	214
77%	39%	43%	4%	65%	52%	55%	70%	70%

833 has been flushed once as a two-year-old, and she produced 8 good embryos. She sells safe in calf to Bear Mtn North Star with a bull calf due September 30th.

lot 114

HEIFER CALF PREGNANCY

SITZ STELLAR 726D
SITZ BARRICADE 632F X **PARTISOVER BURGESS 209**
 SITZ BARBARAMERE NELL 765D
 KG JUSTIFIED 3023
 PARTISOVER BURGESS 133

CED	BW	WW	YW	YH	SC	HP	MILK	
6	2	73	129	0.2	0.40	13	27	
55%	70%	25%	25%	85%	80%	40%	45%	
DOC	CLAW	ANGL	HS	MARB	RE	\$M	\$B	\$C
17	0.34	0.39	0.27	0.74	0.53	73	155	273
60%	4%	10%	15%	50%	75%	25%	40%	30%

Parent Average EPDs

133 is starting to show her age, so her young daughters are getting fewer in number but not any less in quality. 209 is the only Justified x 133 daughter in our herd, and we are in love with her as a two-year-old. You can't get any more Barricade semen, so this pregnancy is as rare as they come. RD is still mad about this one, so you better buy her before he changes his mind. Heifer calf pregnancy is due September 5th.



PARTISOVER BURGESS 825

Full sister to Lots 112 & 113, and the 26,000 High Seller of from The Ground Up Vol. II to Shoal Creek Simmentals, MO



PARTISOVER BURGESS 843

Full sister to Lots 112 & 113



PARTISOVER BURGESS 209

Dam of Lot 114

The 316 X 133'S

The 316 sisters are always quick to grab the attention of ranch visitors. Their beautiful balance, tremendous body, and tidy udders are hard to miss. We used 316 heavily for several years, and we couldn't have been more pleased with the results. The 316 x 133 progeny have made awesome females, and the brothers have been used heavily at the ranch and across the country.

LOT 115




#115 PARTISOVER BURGESS 933

ANGUS • AAA# 19494631 • DOB: 09/01/18 • TATTOO: 933
 CONNEALY CAPITALIST 028 S A V FINAL ANSWER 0035
 LD CAPITALIST 316 PRIDES PITA OF CONANGA 8821
 LD DIXIE ERICA 2053 LD DIXIE ERICA OAR 0853
 SINCLAIR GRASS MASTER BT RIGHT TIME 24J
 PARTISOVER BURGESS 133 N BAR PRIMROSE Y3051
 PARTISOVER BURGESS 812 S A V 8180 TRAVELER 004
 PRTISOVER/ALEXIS BURGESS 238

CED	BW	WW	YW	YH	SC	HP	MILK
1	2	60	106	0.1	0.04	6.5	24
71%	58%	63%	60%	89%	89%	96%	52%

DOC	CLAW	ANGL	HS	MARB	RE	\$M	\$B	\$C
4	0.52	0.45	0.16	0.28	0.44	48	124	209
94%	55%	23%	3%	78%	80%	85%	65%	75%

933 was flushed once as a two-year-old and produced 10 good embryos. She sells open and ready to flush. 

#116 EMBRYO PACKAGE

SITZ STELLAR 726D SQUARE B ATLANTIS 8060
 SITZ BARRICADE 632F X PARTISOVER BURGESS 2103
 SITZ BARBARAMERE NELL 765D PARTISOVER BURGESS 933

CED	BW	WW	YW	YH	SC	HP	MILK
2	3	78	128	0.2	0.78	16.0	19
85%	85%	15%	25%	85%	55%	15%	95%

DOC	CLAW	ANGL	HS	MARB	RE	\$M	\$B	\$C
14	0.39	0.38	0.00	0.51	0.71	79	143	264
75%	15%	10%	1%	75%	45%	15%	60%	40%

Parent Average EPDs:

This Atlantis x 933 daughter has been a real favorite around the ranch this fall. She is absolutely beautiful, sound structured, and we believe the perfect compliment to the power and performance of the Barricade. We are excited to be partners with the Craig family at Traditions Cattle Company on this exciting young female. Selling 3 Grade 1 embryos. Guaranteed one pregnancy if work is done by a certified embryologist.



PARTISOVER BURGESS 2103
 Dam of Lot 116

LOT 117



LOT 117A



PARTISOVER BURGESS 0103
Full sister to Lots 115 & 117

117 PARTISOVER BURGESS 0105

ANGUS • AAA# 19792800 • DOB: 10/13/19 • TATTOO: 0105
 CONNEALY CAPITALIST 028
LD CAPITALIST 316
 LD DIXIE ERICA 2053
 SINCLAIR GRASS MASTER
PARTISOVER BURGESS 133
 PARTISOVER BURGESS 8112
 S A V FINAL ANSWER 0035
 PRIDES PITA OF CONANGA 8821
 C A FUTURE DIRECTION 5321
 LD DIXIE ERICA OAR 0853
 BT RIGHT TIME 24J
 N BAR PRIMROSE Y3051
 S A V 8180 TRAVELER 004
 PRTISOVER/ALEXIS BURGESS 238

CED	BW	WW	YW	YH	SC	HP	MILK
-5	5	83	134	0.5	0.32	1.3	25
89%	95%	3%	42%	30%	74%	100%	37%

DOC	CLAW	ANGL	HS	MARB	RE	\$M	\$B	\$C
7	0.49	0.49	0.3	0.16	0.63	28	131	198
92%	44%	47%	9%	88%	37%	95%	55%	85%

Sells safe in calf to KG Justified with a heifer calf due September 27th.



117a PARTISOVER BURGESS 463

ANGUS • AAA# 20885419 • DOB: 09/10/23 • TATTOO: 463
 COLEMAN CHARLO 0256
S A V RAINFALL 6846
 S A V BLACKCAP MAY 4136
 O C C PAXTON 730P
 BOHI ABIGALE 6014
 S A V 8180 TRAVELER 004
 S A V MAY 2397
 LD CAPITALIST 316
PARTISOVER BURGESS 0105
 PARTISOVER BURGESS 133
 CONNEALY CAPITALIST 028
 LD DIXIE ERICA 2053
 SINCLAIR GRASS MASTER
 PARTISOVER BURGESS 8112

CED	BW	WW	YW	YH	SC	HP	MILK
6	0.1	61	102	-0.3	0.62	6.3	23
23%	12%	64%	83%	99%	61%	77%	71%

DOC	CLAW	ANGL	HS	MARB	RE	\$M	\$B	\$C
5	0.48	0.41	0.34	0.51	0.79	59	125	221
94%	42%	22%	20%	58%	21%	65%	75%	80%

This Rainfall daughter made a lot of friends during "The Sort" judging contest recently at the ranch. To no surprise, because she's the perfect example of why we love the Rainfall females: moderate, big bodied, and beautifully balanced. Her pedigree says maternal function, and she undoubtedly fits the bill.



The DENSITY X 133'S

It seems to be a common theme throughout conversations with anyone who used SAV Density that everyone wishes they had more daughters. We agree and certainly see their value. These females' udders, feet, and disposition have withstood the test of time. They are the kind you pick out from a distance, and say "Man, that's a nice cow." You can't find a more proven mating around here than Density and 133.

LOT 118



Lot 118 PARTISOVER BURGESS 779

ANGUS • AAA# 18924047 • DOB: 10/05/16 • TATTOO: 779
 S A V 8180 TRAVELER 004 SITZ TRAVELER 8180
S A V 004 DENSITY 4336 BOYD FOREVER LADY 8003
 S A V MAY 7238 LEACHMAN RIGHT TIME
 S A R PROSPECTOR MAY 9124
 SINCLAIR GRASS MASTER BT RIGHT TIME 24J
PARTISOVER BURGESS 133 N BAR PRIMROSE Y3051
 PARTISOVER BURGESS 8112 S A V 8180 TRAVELER 004
 PARTISOVER/ALEXIS BURGESS 238

CED	BW	WW	YW	YH	SC	HP	MILK	
2	3.5	59	105	0.6	0.82	8.7	28	
81%	88%	17%	23%	12%	44%	89%	16%	
DOC	CLAW	ANGL	HS	MARB	RE	\$M	\$B	\$C
3	0.43	0.39	0.3	0.02	0.75	48	116	198
92%	16%	6%	4%	90%	23%	85%	75%	85%

Sells safe in calf to Bear Mtn North Star with a heifer calf due September 5th.

LOT 119



Lot 119 PARTISOVER BURGESS 780

ANGUS • AAA# 18924050 • DOB: 10/06/16 • TATTOO: 780
 S A V 8180 TRAVELER 004 SITZ TRAVELER 8180
S A V 004 DENSITY 4336 BOYD FOREVER LADY 8003
 S A V MAY 7238 LEACHMAN RIGHT TIME
 S A R PROSPECTOR MAY 9124
 SINCLAIR GRASS MASTER BT RIGHT TIME 24J
PARTISOVER BURGESS 133 N BAR PRIMROSE Y3051
 PARTISOVER BURGESS 8112 S A V 8180 TRAVELER 004
 PARTISOVER/ALEXIS BURGESS 238

CED	BW	WW	YW	YH	SC	HP	MILK	
6	2.9	55	94	0.2	0.66	10.3	26	
52%	71%	24%	53%	30%	32%	75%	17%	
DOC	CLAW	ANGL	HS	MARB	RE	\$M	\$B	\$C
21	0.27	0.39	0.28	0.11	0.71	65	98	192
32%	1%	6%	19%	88%	23%	40%	95%	90%

Sells safe in calf to Partisover Tradition 241 due October 27th.

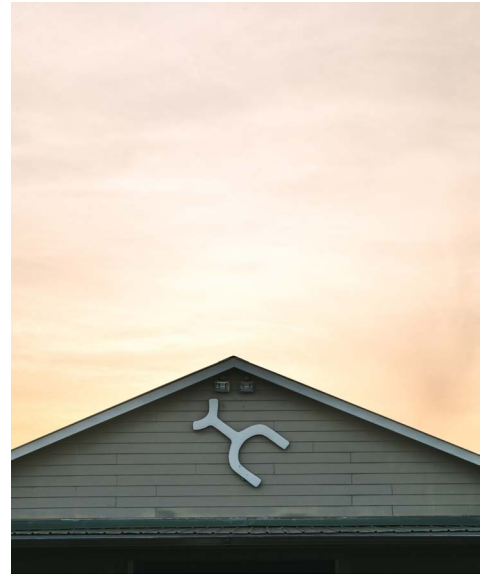


PARTISOVER BURGESS 792

Full sister to Lots 118 & 119



LOT 120



LOT 121



PARTISOVER BURGESS 726
Full sister to Lot 121
Sold in From The Ground Up Vol. 1 to
Pleasant Vally Farm, MD



120 PARTISOVER BURGESS 873

ANGUS • AAA# 19221969 • DOB: 09/08/17 • TATTOO: 873
 CONNEALY CONSENSUS 7229
CONNEALY BLACK GRANITE
 EURA ELGA OF CONANGA 9109
 CONNEALY CONSENSUS
 BLUE LILLY OF CONANGA 16
 S A V BISMARCK 5682
 EURA CAL OF CONANGA 568

SINCLAIR GRASS MASTER
PARTISOVER BURGESS 133
 PARTISOVER BURGESS 8112

BT RIGHT TIME 24J
 N BAR PRIMROSE Y3051
 S A V 8180 TRAVELER 004
 PRISOVER/ALEXIS BURGESS 238

CED	BW	WW	YW	YH	SC	HP	MILK	
8	0.7	55	89	0.5	0.09	13.1	34	
51%	35%	74%	96%	50%	81%	24%	12%	
DOC	CLAW	ANGL	HS	MARB	RE	\$M	\$B	\$C
5	0.39	0.39	0.38	0.32	0.85	76	126	239
96%	6%	16%	37%	78%	30%	15%	60%	45%

The 133 daughters just keep coming. This Black Granite daughter has as neat of a look and presence as any of them. She sells safe in calf to Ellingson Badlands with a heifer calf due September 5th.



121 PARTISOVER BURGESS 7192

ANGUS • AAA# 19165689 • DOB: 09/07/16 • TATTOO: 7192
 R R RITO 707
S A V RESOURCE 1441
 S A V BLACKCAP MAY 4136
 IDEAL 3407 OF 1418 076
 S A V 8180 TRAVELER 004
 S A V MAY 2397

SINCLAIR GRASS MASTER
PARTISOVER BURGESS 133
 PARTISOVER BURGESS 8112

BT RIGHT TIME 24J
 N BAR PRIMROSE Y3051
 S A V 8180 TRAVELER 004
 PRISOVER/ALEXIS BURGESS 238

CED	BW	WW	YW	YH	SC	HP	MILK	
4	1.7	55	101	-0.3	0.64	8	27	
31%	24%	75%	83%	99%	48%	82%	58%	
DOC	CLAW	ANGL	HS	MARB	RE	\$M	\$B	\$C
11	0.45	0.45	0.46	-0.15	0.63	49	73	144
79%	32%	43%	36%	99%	49%	80%	95%	95%

A full-sister to 744 here. She might not be as famous as her sister, but 7192 has certainly proven herself here at the ranch. She is the kind of cow we love at Partisover: moderate, big bodied, and stays fat on fresh air and sunshine. She sells safe in calf to Bear Mtn North Star with a heifer calf due September 5th.



The NEXT GENERATION

We dug deep into the next generation for this offering. The next few lots are proof of the impact we have seen from the 133 daughters. They are all backed by the Sky High x 133 daughters. They combine the most proven bulls we know of 316, Renovation, Stellar, and Rainfall with the best cows Partisover has to offer. You'll love the balance, body, and broodiness of these females.

LOT 122



PARTISOVER BURGESS 838

Dam of Lot 122

Owned by Salacoa Cattle Company



122 PARTISOVER BURGESS 055

ANGUS • AAA# 19797539 • DOB: 08/30/19 • TATTOO: 055

CONNEALY CAPITALIST 028
LD CAPITALIST 316
LD DIXIE ERICA 2053

MUSGRAVE SKY HIGH 1535
PARTISOVER BURGESS 838
PARTISOVER BURGESS 133

S A V FINAL ANSWER 0035
PRIDES PITA OF CONANGA 8821
C A FUTURE DIRECTION 5321
LD DIXIE ERICA OAR 0853

MUSGRAVE BIG SKY
FLAG QUEEN W 00649
SINCLAIR GRASS MASTER
PARTISOVER BURGESS 8112

CED	BW	WW	YW	YH	SC	HP	MILK
7	1.9	68	117	0.7	0.22	8.2	38
48%	68%	31%	42%	31%	75%	86%	2%

DOC	CLAW	ANGL	HS	MARB	RE	\$M	\$B	\$C
6	0.45	0.45	-0.09	0.27	0.85	73	145	261
96%	31%	19%	1%	86%	21%	20%	35%	25%

Sells safe in calf to Stelloplug Hoffman Rise Above with a bull calf due September 5th.



123 PARTISOVER BURGESS 363

ANGUS • AAA# 20668700 • DOB: 09/05/22 • TATTOO: 363

S A V RENOWN 3439
S A V RENOVATION 6822
S A V MADAME PRIDE 0151

LD CAPITALIST 316
PARTISOVER BURGESS 055
PARTISOVER BURGESS 838

RITO 707 OF IDEAL 3407 7075
S A V BLACKCAP MAY 4136
S A V 004 DENSITY 4336
S A V MADAME PRIDE 0075

CONNEALY CAPITALIST 028
LD DIXIE ERICA 2053
MUSGRAVE SKY HIGH 1535
PARTISOVER BURGESS 133

CED	BW	WW	YW	YH	SC	HP	MILK
9	1.8	71	126	0.6	0.43	7.8	31
26%	53%	18%	16%	35%	73%	98%	35%

DOC	CLAW	ANGL	HS	MARB	RE	\$M	\$B	\$C
-1	0.42	0.44	0.31	0.2	0.72	76	125	238
99%	32%	45%	16%	93%	33%	20%	75%	65%

Sells safe in calf to KG Justified with a bull calf due September 14th.



LOT 123



LOT 124

PARTISOVER BURGESS 843

Dam of Lot 124

Owned by Triple J Show Cattle, NE



Lot 124

PARTISOVER BURGESS 301

ANGUS • AAA# 20668842 • DOB: 07/15/22 • TATTOO: 301

MOHNEN SUBSTANTIAL 272
SITZ STELLAR 726D
SITZ PRIDE 2008


BENFIELD SUBSTANCE 8506
MOHNEN GLYN MAWR ELBA 1758
CONNEALY FINAL PRODUCT
SITZ PRIDE 308Y

MUSGRAVE SKY HIGH 1535
PARTISOVER BURGESS 843
PARTISOVER BURGESS 133

MUSGRAVE BIG SKY
FLAG QUEEN W 00649
SINCLAIR GRASS MASTER
PARTISOVER BURGESS 8112

CED	BW	WW	YW	YH	SC	HP	MILK
10	0.3	66	116	0.4	0.47	10.9	25
43%	38%	54%	57%	76%	59%	75%	57%

DOC	CLAW	ANGL	HS	MARB	RE	\$M	\$B	\$C
13	0.17	0.36	0.42	0.81	0.35	79	140	261
60%	1%	15%	35%	28%	90%	15%	60%	40%

Sells safe in calf to Bear Mtn North Star with a heifer calf due September 20th. 

Lot 125

PARTISOVER BURGESS 383

ANGUS • AAA# 20668813 • DOB: 09/29/22 • TATTOO: 383

COLEMAN CHARLO 0256
S A V RAINFALL 6846
S A V BLACKCAP MAY 4136


O C C PAXTON 730P
BOHI ABIGALE 6014
S A V 8180 TRAVELER 004
S A V MAY 2397

MUSGRAVE SKY HIGH 1535
PARTISOVER BURGESS 846
PARTISOVER BURGESS 133

MUSGRAVE BIG SKY
FLAG QUEEN W 00649
SINCLAIR GRASS MASTER
PARTISOVER BURGESS 8112

CED	BW	WW	YW	YH	SC	HP	MILK
7	2.4	63	126	0.4	0.94	7.2	33
36%	44%	79%	33%	85%	43%	89%	22%

DOC	CLAW	ANGL	HS	MARB	RE	\$M	\$B	\$C
14	0.48	0.4	0.29	0.57	0.63	44	121	201
75%	34%	13%	14%	47%	50%	95%	80%	90%

Sells safe in calf to Bear Mtn North Star with a heifer calf due September 12th. 

LOT 125

PARTISOVER BURGESS 846

Dam of Lot 125



The ATLANTIS X 922 SISTERS

The Atlantis x 922 sisters may be the deepest flush of females we have ever had on the ranch. When selecting females for the inaugural Between the Brands, we knew we had to offer one of these sisters. When it was time to make a decision, we were deciding whether to offer 385 or 386, and the powers that be each picked a different one. So, we decided to give you the opportunity to select between this exciting pair. Atlantis stamps his daughters as consistently as any sire we've used in recent years. Combine that with the captivating look of every 922 daughter, and you know why we are so excited about these sisters. Come take your pick!

LOT 126A



choice
lot



PARTISOVER BURGESS 922
Dam of Lots 126-128



LOT 126B

126 PARTISOVER BURGESS 385

ANGUS • AAA# 20668812 • DOB: 10/01/22 • TATTOO: 385

S A V RAINFALL 6846

SQUARE B ATLANTIS 8060

ELBANNA OF CONANGA 1209

PLATTEMERE WEIGH UP K360

PARTISOVER BURGESS 922

PARTISOVER BURGESS 133

COLEMAN CHARLO 0256

S A V BLACKCAP MAY 4136

CONNEALY CONSENSUS

ELBASTA OF CONANGA 9703

SITZ UPWARD 307R

BARBARA OF PLATTEMERE 337

SINCLAIR GRASS MASTER

PARTISOVER BURGESS 8112

CED	BW	WW	YW	YH	SC	HP	MILK
8	2.4	67	110	0.5	0.64	14.7	33
55%	74%	38%	64%	37%	72%	33%	19%

DOC	CLAW	ANGL	HS	MARB	RE	\$M	\$B	\$C
15	0.49	0.58	0.23	0.27	0.94	80	111	224
55%	48%	95%	6%	76%	20%	10%	90%	75%

Sells safe in calf to Stellpflug Hoffman Rise Above with a bull calf due August 23rd.



126 PARTISOVER BURGESS 386

ANGUS • AAA# 20668819 • DOB: 10/01/22 • TATTOO: 386

S A V RAINFALL 6846

SQUARE B ATLANTIS 8060

ELBANNA OF CONANGA 1209

PLATTEMERE WEIGH UP K360

PARTISOVER BURGESS 922

PARTISOVER BURGESS 133

COLEMAN CHARLO 0256

S A V BLACKCAP MAY 4136

CONNEALY CONSENSUS

ELBASTA OF CONANGA 9703

SITZ UPWARD 307R

BARBARA OF PLATTEMERE 337

SINCLAIR GRASS MASTER

PARTISOVER BURGESS 8112

CED	BW	WW	YW	YH	SC	HP	MILK
11	1.1	71	124	0.6	0.74	16.6	24
36%	55%	34%	42%	50%	62%	12%	90%

DOC	CLAW	ANGL	HS	MARB	RE	\$M	\$B	\$C
5	0.44	0.51	0.39	0.44	0.92	68	151	264
92%	15%	55%	12%	81%	15%	40%	45%	40%

Sells safe in calf to KG Justified with a heifer calf due August 23rd.



The 922 DAUGHTERS

922 has the look and presence that will grab anybody's attention. She was the first cow that Callie latched on to when she moved to Colbert and has proven to be an elite producer. With her extra size and scale, she makes daughters that even our show cattle friends fall in love with. These two daughters are the only ones of their respective matings, so it's hard to let them go, but we committed to bringing our best to Madison!

LOT 127



127

PARTISOVER BURGESS 441

ANGUS • AAA# 20885428 • DOB: 09/01/23 • TATTOO: 441

SITZ STELLAR 726D MOHNEN SUBSTANTIAL 272
SITZ BARRICADE 632F SITZ PRIDE 200B
SITZ BARBARAMERE NELL 765D SITZ SUPERIOR 10971
SITZ BARBARAMERE NELL 73T

PLATTEMERE WEIGH UP K360 SITZ UPWARD 307R
PARTISOVER BURGESS 922 BARBARA OF PLATTEMERE 337
PARTISOVER BURGESS 133 SINCLAIR GRASS MASTER
PARTISOVER BURGESS 8112

CED	BW	WW	YW	YH	SC	HP	MILK
7	1.1	66	111	0.2	1.09	15.3	30
81%	77%	56%	76%	83%	41%	38%	31%

DOC	CLAW	ANGL	HS	MARB	RE	\$M	\$B	\$C
15	0.29	0.46	0.45	0.4	0.31	92	112	237
37%	1%	15%	34%	61%	83%	2%	90%	65%



128

PARTISOVER BURGESS 376

ANGUS • AAA# 20668769 • DOB: 09/27/22 • TATTOO: 376

S A V RENOVATION 6822 S A V RENOWN 3439
S A V JESSE JAMES 0968 S A V MADAME PRIDE 0151
S A V BLACKCAP MAY 8961 S A V 8180 TRAVELER 004
S A V MAY 2397

PLATTEMERE WEIGH UP K360 SITZ UPWARD 307R
PARTISOVER BURGESS 922 BARBARA OF PLATTEMERE 337
PARTISOVER BURGESS 133 SINCLAIR GRASS MASTER
PARTISOVER BURGESS 8112

CED	BW	WW	YW	YH	SC	HP	MILK
11	1	58	99	0.4	0.55	13.2	33
44%	70%	41%	55%	35%	71%	54%	29%

DOC	CLAW	ANGL	HS	MARB	RE	\$M	\$B	\$C
10	0.45	0.41	0.45	0.37	0.47	78	113	225
67%	21%	18%	22%	77%	68%	15%	90%	75%

Sells safe in calf to Bear Mtn North Star with a heifer calf due August 23rd.



LOT 128



The 744 COW FAMILY

If you're still reading my ramblings, you've heard time and time again what we think about the 744 daughters. Here are two examples of what they will do in the next generation. They have more power and performance and are even better numerically than their mothers. This is your chance to get in on young, fresh Partisover genetics.

LOT 129



PARTISOVER BURGESS 025

Dam of Lot 129




129 **PARTISOVER BURGESS 340**

ANGUS • AAA# 20668859 • DOB: 08/29/22 • TATTOO: 340
 TEHAMA UPWARD Y238 SITZ UPWARD 307R
TEHAMA TAHOE B767 TEHAMA ELITE BLACKBIRD T735
 TEHAMA MARY BLACKBIRD Y684 S A V FINAL ANSWER 0035
 TEHAMA MARY BLACKBIRD T073
 CONNEALY CONFIDENCE PLUS CONNEALY CONFIDENCE 0100
PARTISOVER BURGESS 025 ELBANNA OF CONANCA 1209
 PARTISOVER BURGESS 744 S A V RESOURCE 1441
 PARTISOVER BURGESS 133

CED	BW	WW	YW	YH	SC	HP	MILK
6	2.3	83	132	0.1	1.09	11.5	27
29%	65%	9%	45%	65%	29%	47%	38%

DOC	CLAW	ANGL	HS	MARB	RE	\$M	\$B	\$C
22	0.31	0.36	0.33	0.94	1.09	82	166	297
28%	2%	5%	21%	25%	4%	10%	25%	15%


Sells safe in calf to Ellingson Badlands with a heifer calf due August 23rd. 

130 **PARTISOVER BURGESS 359**

ANGUS • AAA# 20678208 • DOB: 09/03/22 • TATTOO: 359
 COLEMAN CHARLO 0256 O C C PAXTON 730P
S A V RAINFALL 6846 BOHI ABIGALE 6014
 S A V BLACKCAP MAY 4136 S A V 8180 TRAVELER 004
 S A V MAY 2397
 BASIN PAYWEIGHT 1682 BASIN PAYWEIGHT 006S
PARTISOVER BURGESS 970 21AR O LASS 7017
 PARTISOVER BURGESS 744 S A V RESOURCE 1441
 PARTISOVER BURGESS 133

CED	BW	WW	YW	YH	SC	HP	MILK
4	-0.1	70	134	0.1	1.79	17.2	28
40%	9%	54%	19%	90%	5%	6%	45%

DOC	CLAW	ANGL	HS	MARB	RE	\$M	\$B	\$C
23	0.53	0.55	0.45	0.56	0.61	76	145	264
22%	74%	85%	42%	50%	66%	20%	50%	40%

Sells safe in calf to Stellflug Hoffman Rise Above with a heifer calf due August 23rd. 

LOT 130



PARTISOVER BURGESS 1104

Maternal sister to Lot 130



The 955 COW FAMILY

We aren't sure how we snuck this one past RD. Not only is she awesome balanced, big bodied, and great structure, but 398 is a special pedigree. Her mother, 955 was one of our favorite 316 x 133 daughters whose legacy was cut short. We only have a few of her progeny, but we could not be more excited about them. Combine that with the potency of Atlantis, and we are confident this one has a bright future. Sells safe in calf to KG Justified with a heifer calf due August 23rd.

LOT 131



PARTISOVER BURGESS 955
Dam of Lot 131



PARTISOVER BURGESS 2141
Maternal sister to Lot 131

Lot 131 **PARTISOVER BURGESS 398**

ANGUS • AAA# 20668822 • DOB: 10/04/22 • TATTOO: 398
 S A V RAINFALL 6846
SQUARE B ATLANTIS 8060
 ELBANNA OF CONANGA 1209
 LD CAPITALIST 316
PARTISOVER BURGESS 955
 PARTISOVER BURGESS 133
 COLEMAN CHARLO 0256
 S A V BLACKCAP MAY 4136
 CONNEALY CONSENSUS
 ELBASTA OF CONANGA 9703
 CONNEALY CAPITALIST 028
 LD DIXIE ERICA 2053
 SINCLAIR GRASS MASTER
 PARTISOVER BURGESS 8112

CED	BW	WW	YW	YH	SC	HP	MILK
4	2.2	73	125	0.5	1.48	8.8	25
49%	45%	22%	33%	37%	8%	67%	57%

DOC	CLAW	ANGL	HS	MARB	RE	\$M	\$B	\$C
14	0.3	0.43	0.28	0.89	0.81	58	176	286
75%	3%	23%	4%	11%	25%	65%	20%	20%





Thank you
FOR YOUR INTEREST
IN THE BETWEEN THE BRANDS SALE
ANGUS DIVISION





BETWEEN
the BRANDS

PARTISOVER RANCH · INNISFAIL FARM

FLIP YOUR CATALOG
TO VIEW THE HEREFORD OFFERING