

Y V RANCH NIXDORFF GENETICS *Bull Sale*

Thursday, February 19th, 2026 - 1:30PM MST
at the Ranch, Airdrie, Alberta



Hereford & Angus Bulls on offer
WWW.YV-RANCH.COM



WELCOME, FROM YV RANCH

Welcome to our Annual YV Ranch Nixdorff Genetics Bull Sale Hereford and Angus offering. We are pleased to share our 2026 catalogue with you, this is our biggest bull offering to date. As our core cowherd grows, we are able to offer more bulls while maintaining our stringent culling process. These bulls are backed by the core program principles that we've been working decades to establish.

Our goal is simple, we strive to support our customers in producing the most efficient cows possible that in-turn generate calves that will excel from birth through to slaughter. By running our purebred cows alongside our commercial cows, and in environments similar to our customers', we can identify animals that fit the environment and rise to the top. We have adjusted our

program to offer all 2 year old bulls in this year's sale. Our bulls are developed for longevity on high fiber, low starch diets that strengthen their rumens, joints and feet. A great benefit of selling 2 year old bulls is they do not need to be pushed. These bulls spend their first winter after weaning being grown out on green feed swaths and standing forages which allows us to put them through our first environmental stress test. A young bull that can thrive in a low input environment will be more likely to produce a cow that can thrive on less.

The selection pressure on the 2026 sale bulls has been immense, leaving only the best of the best in the sales lineup. We are very proud of them, and are confident you will find a selection of bulls that will benefit your operation.



TERRI & NELS NIXDORFF
Nels 403-510-2771
Terri 403-808-2771



**HAL, NICKY & HAYES
NIXDORFF**
Hal 403-852-9234

280201 TWP RD 270 ROCKY VIEW COUNTY, AB T4A 2T2



We want to congratulate our customers; your persistence and dedication to this industry has paid off. The past year in the cattle business has been a very exciting time - enjoy it! Beef is trending and many consumers have gained an appreciation for how nutritious it really is. The demand for high quality, well-marbled beef continues and we're excited for our customers to play a role in filling the demand.

We are excited to invite you to our on-farm Bull Sale, Thursday, February 19th, 2026. Please take this catalog as your invite to join us on sale day. Please do not hesitate to reach out to any of us prior to the sale with questions on the bulls or our program. We would love to show you our cowherd, sale bulls, and discuss our breeding philosophies.

~ the Nixdorff Family

Nels Nixdorff

Terri Nixdorff

Hal Nixdorff

Nicky Nixdorff

Adam Nixdorff

Alison Nixdorff

Coleman Nixdorff



ADAM & ALISON NIXDORFF
Adam 587-580-8310



COLEMAN NIXDORFF
403-990-1254

WWW.YV-RANCH.COM

SALE DAY INFORMATION

SALE LOCATION

From Airdrie, 10 miles (16 km) East from the QE#2 South Airdrie overpass, on the Yankee Valley Road (Twp Rd 270). The farm is on the south side of the road with a large red YV Ranch sign.

Search "YV Ranch" on Google Maps
15 minutes from the Calgary International Airport

YV RANCH

The Nixdorff's
280201 TWP RD 270
Rocky View County, AB T4A 2T2

SCHEDULE

Wednesday, February 18, 2026

- 2:00 pm-5:00 pm: Open House
- Bulls available for viewing and refreshments

Thursday, February 19, 2026

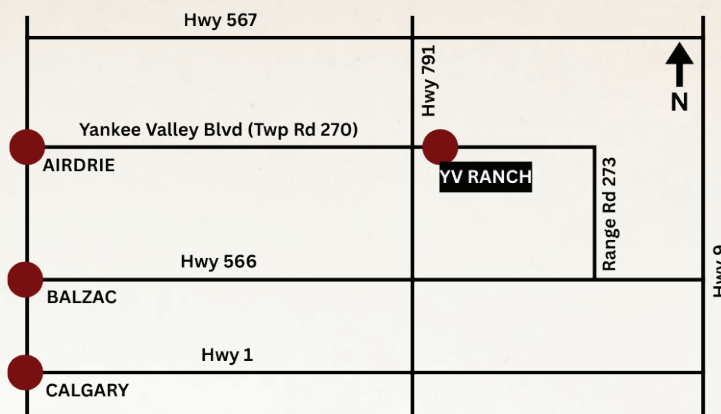
- 10:00 am: Bulls available for viewing, coffee and refreshments
- 12:00 pm: Prime Rib Lunch
- 1:30 pm MST: YV Ranch, Nixdorff Genetics Bull Sale

SALE DAY CONTACTS

Adam	587-580-8310 adamnixdorff@gmail.com
Hal	403-852-9234
Coleman	403-990-1254
Nels	403-510-2771
Terri	403-808-2771

SALES STAFF

Ryan Hurlburt, Auctioneer	306-292-9812
Travis Bygrove, Ring Service	780-205-6008
Kevin Murnin, Ring Service	406-853-4638 (USA Rep)



OFFERING

70 Horned and Polled Hereford and Angus Bulls

AUCTION FORMAT

This will be a video sale with no bulls entering the ring. All sale cattle will be available for viewing on location, sale day and prior.

VIDEOS

Videos of the bulls can be viewed at:

- YV-Ranch.com
- DLMS.ca
- Cattlevids.ca

BID AND VIEW ONLINE AT DLMS.CA

DLMS Sale Day Support 780 -991-3025

Internet Bidding Available



For more information call:

Mark Shologan 780-699-5082 or Purebred Team 780-991-3025



CUSTOMER LOYALTY REWARDS

We are pleased to offer volume discounts on 3 or more bulls purchased, with a percentage for each bull purchased up to 10% off on 10+ bulls.

SIGHT UNSEEN PURCHASE GUARANTEE

If you are unable to attend the sale or view the bulls in person, we offer a 100% satisfaction guarantee on all cattle purchased sight unseen. Call any of the Nixdorff's prior to the sale for any assistance or more information on any of the bulls.

BREEDING GUARANTEE

Every bull is semen tested and 100% guaranteed on feet, legs, and ability to breed.

INSURANCE

Livestock insurance will be available sale day.

DELIVERY

Pick up your bull before March 1, 2026 and receive \$300 off each bull.

Free delivery on all bulls sold to Western Canada and the North Western United States. YV Ranch will work with customers to deliver to further destinations.

An additional fee of \$500 CDN on all international purchases under \$9,000 CDN to cover export brokerage and testing fees.

RIGHT TO SEMEN

YV Ranch reserves the right to draw semen on any sale bulls at YV's expense and the buyer's convenience, for in-herd use.

HERD HEALTH

Provided by Dr. Waylon Wise and Dr. Alessa Kuczewski and the team at Cow/Calf Health and Management Solutions (CCHMS).

DATA COLLECTION

Provided by Herdtrax Beef, Dr. Troy Drake.

TERMS

Full terms listed on page 39.

ACCOMMODATIONS:

Airdrie

Comfort Inn & Suites 403-948-3411

Fairfield Inn & Suites 403-945-7000

Balzac

Days Inn by Wyndham 403-516-3297

INTERNATIONAL PURCHASES

International buyers take advantage of the favorable Canadian dollar - there is nearly a 30% discount to the USD. We have sold bulls to the US on a yearly basis for over 35 years.

WWW.YV-RANCH.COM





STRUCTURAL SOUNDNESS: all cattle are run on large summer and winter pastures, pushing their need for overall structural soundness.

FERTILITY: all heifers follow a timed AI protocol at 55% of their mature body weight forcing only the most fertile to cycle, followed by a short exposure to bulls for no more than 45 days. This allows for animals with lower fertility to be culled from the program at a young age. Cows are limited to a 63-day exposure window. Both heifers and cows are bred coming off of winter grazing crop residue and greenfeed swaths.

LONGEVITY: the longevity of a commercial cow herd is directly related to the operation's profitability. Our data collection process allows us to critically examine the overall differences in longevity among our genetic lines and allows us to make strict culling decisions.

MATERNAL TRAITS: every female is given a score for udder structure and teat size directly after calving, this allows us to eliminate females with poor quality udders. It also allows us to identify highly maternal bulls. Before a sire is used in the herd, the dam and paternal grand dam are evaluated to ensure their udders are of the highest quality. We have been collecting udder scores on all our females in both our purebred and commercial herds for over 20 years. This has allowed us to make strict and objective culling decisions.

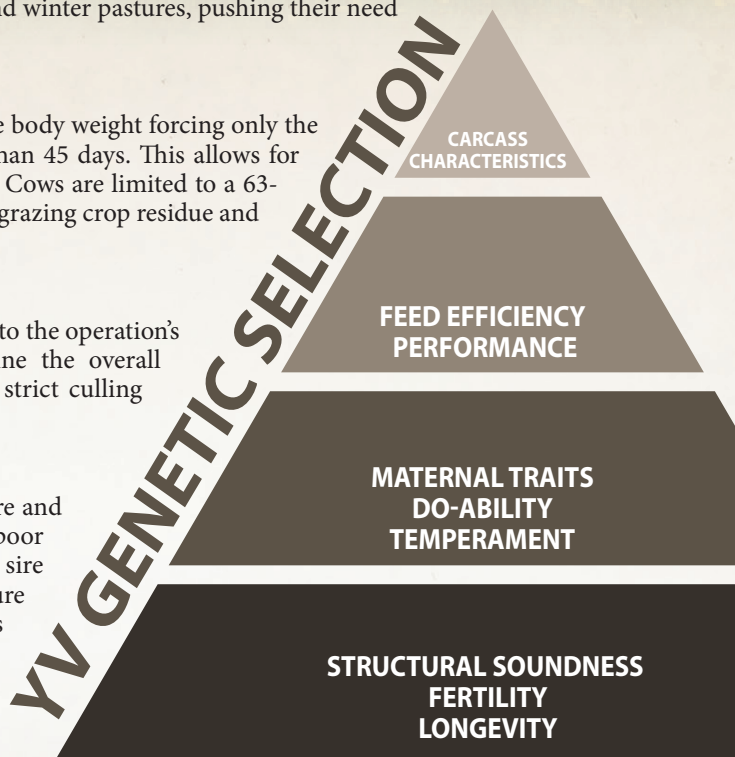
DO-ABILITY: rather than just survive, cows should be able to thrive in harsh environments, and we push our cows to do just that. From weaning to calving, our purebred cow herd is co-mingled with our large commercial cow herd. While together, they spend winter extensively grazing crop residues, followed by swath grazing in the spring, before calving on large stubble fields.

TEMPERAMENT: docility and temperament are of high importance in our program; any outlying nervous heifers or bulls are culled at weaning. All cattle are frequently worked on foot, on horseback and with a dog.

FEED EFFICIENCY: in order to maintain a profitable cow herd, there should be a focus put on reducing input costs. With feed being the largest component of a herd's input costs, selecting for feed efficiency allows us to reduce these costs without compromising the performance of our cattle.

PERFORMANCE: cows and calves are run in large contemporary groups from birth through weaning and maintained in the same groups until they are yearlings. This allows for direct comparison of performance while removing any influence of environmental factors. Cow weights are recorded on a yearly basis, allowing for selection of high growth animals while maintaining a moderate cow size.

CARCASS CHARACTERISTICS: in an effort to improve lean muscle yield and carcass weights, all sale bulls are ultrasounded for ribeye area, marbling and backfat. In addition to this, we finish all of our cull bulls and heifers, as well as commercial steers and heifers, collecting their carcass data from the packer. We also collect carcass data from some of our bull buyers' calves. The multiple sources of data allow us to make informed breeding decisions to continuously improve our carcass merit.



5 Star **RATING SYSTEM** explained

Simplifying our data for a better user experience.

As we collect additional metrics on our cattle, we strive to provide our customers with the most accurate information possible. The 5 Star Rating System presents the information in the easiest way for you to identify bulls that will meet your needs.

The more stars a bull has, the greater genetic improvement you can expect in his calves in the following areas:

CALVING EASE

Use the Calving Ease 5 Star Guide to select for reduced calving difficulties and calf vigor

- ***** Use on all Heifers and Cows
- **** Use on Mature Heifers and Cows
- *** Use on Mature Cows
- ** Use on Mature Cows
- * Use on Large Frame Mature Cows

PERFORMANCE

Use the Performance 5 Star Guide to select bulls to add more weaning and yearling growth.

MATERNAL

Use the Maternal 5 Star Guide to select bulls to produce better replacement females based on udder quality, teat placement and structure, cow longevity, stayability and mothering ability.

EFFICIENCY

Use the Efficiency 5 Star Guide to make efficiency improvements in both the cow herd and feeder pen by reducing cow herd feed consumption, increasing summer grazing density and improving feedyard F:G and profit. Individual animal Residual Feed Intake (RFI) and feed to gain metrics are used, along with metrics from our cow herd collected under low quality winter feeding conditions.

CARCASS

Use the Carcass 5 Star Guide to make genetic improvements to the carcass quality of future feeder calves. All sale bulls have been scanned for marbling, ribeye area and rib fat, and then benchmarked within our herd. YV feeder steers and heifer kill data with known sires have also been added to our in-herd benchmarking.

FIND OUT MORE ABOUT OUR 5 STAR RATING GUIDE ON OUR WEBSITE YV-RANCH.COM



Leading the way IN FEED EFFICIENCY

IT'S SIMPLE, IT'S ABOUT REDUCING FEED CONSUMPTION, WHILE MAINTAINING PERFORMANCE AND CARCASS QUALITY.

We individually test all our sale bulls and replacement heifers for Residual Feed Intake, AKA, Feed Efficiency.

For 13 years we have put selection pressure on feed efficiency through active feed intake testing. Over the past 7 years, we've had an on-farm GrowSafe feed intake system to test all of our bulls and purebred heifers, along with some commercial heifers.

Selection for feed efficiency benefits our own purebred and commercial herds, and also adds immense value to our customers' breeding programs. Retaining high efficiency sires in our program has resulted in significant improvements in the feed to gain of our cattle on feed and it has allowed us to increase stocking densities during summer grazing. The unique characteristics of feed efficiency, specifically, residual feed intake (RFI), make it compatible with every breeding program.

By selecting for cattle with a lower RFI we can achieve:

- A reduction in cowherd feed requirements by 20-30%
- Extended grazing days for cattle on pasture
- More efficient feed to gains on feeder cattle

FEED INTAKE MEASURING EQUIPMENT

Each bunk weighs each animal's intake continuously and records their electronic identification



THE YV RANCH *cow*

Every day we work to increase the profitability of our cow herd by reducing inputs, lowering costs and lowering overheads - and we hope our customers share a similar mindset! Selecting the right genetics is critical in reducing a herd's input requirements and costs; ideally the genetics should be sourced from a place where the cattle are run similar to, or tougher than your own. This is where we believe our genetics can add the most value to our customers' cow herds.

Every YV Ranch bull is backed by a cow that meets the fundamental principles to generate profitability and longevity within a herd. Every single YV Ranch cow is run in a large group year round, where over the winter all the purebred cows are grazed alongside their commercial counterparts for the whole winter, every winter! The cow herd is continuously pushed for self sufficiency where every cow needs to wean a live calf, untouched by human intervention to remain in the herd. Intensive cow herd udder, feet, fertility and temperament scores are analyzed to continue pushing the envelope on longevity.

If you're interested in having your herd work for you, not you working for your cows, then a YV Ranch Bull is what you're looking for.

YV Ranch cows check all the boxes while working in low input environments:

- ✓ ***Fertility***
- ✓ ***Longevity***
- ✓ ***Excellent Udders***
- ✓ ***Exceptional Feet and Legs***
- ✓ ***Feed Efficiency***



2025 SALE DAY



Thank You
TO ALL OF OUR PAST BUYERS

ALL *Twos* MORE BULL... MORE *power*

This marks our first year selling all of our bulls as “two year olds”. The sale bulls range in age from 21 to 23 months of age at sale time, and most will be over 2 when turned out with cows.

What makes a 2 YO a preferred bull to add to your ranches battery?

They are bigger, stronger, smarter, and more athletic.

- The bulls are grown out slower on higher roughage forages and do not need to be pushed like a yearling bull, creating a bull with superior rumen health and longevity.
- Ability to breed more cows: the 2's will breed like mature bulls, they require less attention and tire out slower.
- Don't need to be babied over their first winter and can be run with the rest of the herd bulls.
- Having our purebred cowherd calve in sync with nature allows for more continued selection pressure on the herd to mimic our customers' programs.





YV 4M

EPD	CE	BW	WW	YW	MILK	TM	MCE	SC	CW	CowFert
	3.2	3.7	66.4	100.0	27.5	60.7	4.4	1.3	97.5	19.2
Udder	TeatSize	MPI	FMI	RFI	PWG	Fat	REA	MARB	Carcass	
	1.2	1.2	142.1	114.9	103	33.6	0.004	0.60	0.23	83.6

4M YV 33K MR KINGSTON 4M

YV 4M | C03116384 | FEB 11, 2024 | HORNED

SIRE PCL 4013 GENESEEKER ET 22G
PCL 22G KINGSTON 33K
PCL 6153 MISS JADE ET 56G

DAM BR 213B FORTY CREEK 234F
YV 234F WHISKEY GIRL 92K
YV 39D MS DESIGNER 59F

5 STAR INFORMATION				
Calving Ease	Performance	Maternal	Efficiency	Carcass
***	****	****	***	***
INDIVIDUAL PERFORMANCE				
AGE OF DAM	BW	ADJ WW	IND	ADJ YW
4	76	753	105	1133
PIGM. LEFT EYE	RibFat	REA	REA/100lbs	%IMF
60	0.11	12.25	0.98	1.59
PIGM. RIGHT EYE	RFI	%LMY		
40	0.057	66.1		

This fancy-made bull out of a first calf Forty Creek daughter adds style and athleticism with a moderate birth weight of 76lbs. His tear drop and shape through his hip will catch your eye when you walk into the pen.



YV 59F, GRANDDAM OF 4M



YV 7M

EPD	CE	BW	WW	YW	MILK	TM	MCE	SC	CW	CowFert
	12.5	-1.1	61.0	95.5	35.7	66.2	7.6	1.5	81.0	18.0
Udder	TeatSize	MPI	FMI	RFI	PWG	Fat	REA	MARB	Carcass	
	1.1	1.1	156.2	132.4	95	34.5	0.125	0.55	0.13	78.5

7M YV 537G BIG COUNTRY 7M

YV 7M | C03124825 | FEB 13, 2024 | POLLED

SIRE TH FRONTIER 174E
TH BIG COUNTRY 537G ET
TH 506X 145Y DOMINETTE 533B ET

DAM INNISFAIR WHR X651/723 4013 ET
YV 4013 MS VALLEYGROWN 3J
YV 8Y MS VALLEYGROWN ET 64G

5 STAR INFORMATION				
Calving Ease	Performance	Maternal	Efficiency	Carcass
*****	****	***	***	****
INDIVIDUAL PERFORMANCE				
AGE OF DAM	BW	ADJ WW	IND	ADJ YW
5	68	723	0	1087
PIGM. LEFT EYE	RibFat	REA	REA/100lbs	%IMF
100	0.36	11.08	0.93	2.92
PIGM. RIGHT EYE	RFI	%LMY		
100	0.095	59.2		

7M is a polled calving ease specialist that does not give up any performance, with a 68 lb birth weight and an actual weaning weight of 856 lbs. We used his sire, Big Country, in our AI program and were very happy with both his sons and daughters.



YV 3J, DAM OF 7M



YV 9M

EPD	CE	BW	WW	YW	MILK	TM	MCE	SC	CW	CowFert
	9.3	1.1	61.8	91.2	27.5	58.4	7.8	1.6	88.3	16.2
Udder	TeatSize	MPI	FMI	RFI	PWG	Fat	REA	MARB	Carcass	
	1.1	1.1	142.5	134.5	107	29.4	0.074	0.26	0.46	73.9

9M YV 33K MR KINGSTON 9M

YV 9M | C03116388 | FEB 16, 2024 | SCURRED

SIRE PCL 4013 GENESEEKER ET 22G
PCL 22G KINGSTON 33K
PCL 6153 MISS JADE ET 56G

DAM AGA 18Z ZOOM STAN CREDITOR 77C
YV 77C MS CREDIT 116K
YV 40A STANDARD LASS 102C

5 STAR INFORMATION				
Calving Ease	Performance	Maternal	Efficiency	Carcass
*****	*****	****	****	****
INDIVIDUAL PERFORMANCE				
AGE OF DAM	BW	ADJ WW	IND	ADJ YW
5	62	779	108	1147
PIGM. LEFT EYE	RibFat	REA	REA/100lbs	%IMF
100	0.36	10.82	0.87	2.98
PIGM. RIGHT EYE	RFI	%LMY		
80	-0.121	59.0		

This easy fleshing Kingston son boasts a mix of calving ease and performance. He is a proven sleep-easy heifer bull with a big body, light hair and easy fleshing ability, with the added bonus of having the top IMF scan of the sale bulls.



YV 102C, GRANDDAM OF 9M

10M YV 79K MR LIGHT EXPRESS 10M

YV 10M | C03116389 | FEB 19, 2024 | HORNED

SIRE BR 16E EXPRESS ET 64H
BR 64H EXPRESS 79K
BR 115D DOMINO 224F

DAM YV 77C CREDITOR 22G
YV 22G MS LIGHT CREDIT 37K
YV 13F MS LIGHT CREDIT 14H

5 STAR INFORMATION				
Calving Ease	Performance	Maternal	Efficiency	Carcass
*****	***	*****	*****	***
INDIVIDUAL PERFORMANCE		INDIVIDUAL PERFORMANCE		
AGE OF DAM	4	BW	ADJ WW	IND
PIGM. LEFT EYE	100	77	746	104
PIGM. RIGHT EYE	0	RibFat	REA	REA/100lbs
		0.12	12.47	1.11
		%IMF	%LMY	RFI
		1.49	66.0	-0.08

We have been pleased with our first calf crop from BR 79K, 10M is no exception. A curly haired, smooth made, calving ease specialist, out of a first calf Creditor heifer with a maternally packed pedigree top and bottom.



YV 14H, GRANDDAM OF 10M



YV 10M

CE	BW	WW	YW	MILK	TM	MCE	SC	CW	CowFert
9.4	1.7	43.7	65.0	31.0	52.9	3.8	0.7	53.7	20.9
Udder	TeatSize	MPI	FMI	RFI	PWG	Fat	REA	MARB	Carcass
1.2	1.3	152.0	89.7	108	21.3	0.014	0.13	0.13	67.8

13M YV 33K MR KINGSTON 13M

YV 13M | C03116392 | FEB 20, 2024 | POLLED

SIRE PCL 4013 GENESEEKER ET 22G
PCL 22G KINGSTON 33K
PCL 6153 MISS JADE ET 56G

DAM BAR JZ BUCCANEER 210E
YV 210E MS BUCCANEER 8K
YV 234F WHISKEY GIRL 86H

5 STAR INFORMATION				
Calving Ease	Performance	Maternal	Efficiency	Carcass
*****	***	*****	*****	*****
INDIVIDUAL PERFORMANCE		INDIVIDUAL PERFORMANCE		
AGE OF DAM	4	BW	ADJ WW	IND
PIGM. LEFT EYE	100	73	779	108
PIGM. RIGHT EYE	100	RibFat	REA	REA/100lbs
		0.20	10.98	1.07
		%IMF	%LMY	RFI
		1.88	63.0	-0.26

This polled Kingston son is shaggy haired, loose hided, and big middled. His dam, 8K, is a first calf heifer and has turned into an exceptional young cow, it's a shame we do not have a picture of her. 13M can be used safely on heifers and cows.



YV 86H, GRANDDAM OF 13M



YV 13M

CE	BW	WW	YW	MILK	TM	MCE	SC	CW	CowFert
8.7	0.5	60.9	75.6	319	62.4	8.0	1.7	81.2	21.7
Udder	TeatSize	MPI	FMI	RFI	PWG	Fat	REA	MARB	Carcass
1.3	1.4	165.6	107.9	109	14.7	0.054	0.56	0.34	79.6

15M YV 79K WHISKEY EXPRESS 15M

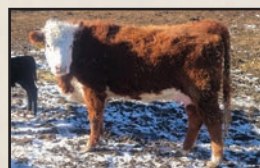
YV 15M | C03116613 | FEB 23, 2024 | HORNED

SIRE BR 16E EXPRESS ET 64H
BR 64H EXPRESS 79K
BR 115D DOMINO 224F

DAM BR 213B FORTY CREEK 234F
YV 234F MS WHISKEY GIRL 76K
YV 15Z ZAMS GIRL 2E

5 STAR INFORMATION				
Calving Ease	Performance	Maternal	Efficiency	Carcass
*****	***	*****	*****	***
INDIVIDUAL PERFORMANCE		INDIVIDUAL PERFORMANCE		
AGE OF DAM	4	BW	ADJ WW	IND
PIGM. LEFT EYE	0	77	670	93
PIGM. RIGHT EYE	40	RibFat	REA	REA/100lbs
		0.07	11.43	1.15
		%IMF	%LMY	RFI
		1.40	66.5	-0.053

15M is a moderate framed, attractive-made bull with plenty of muscle. This 79K son boasts a 77 lb birth weight, he moves out well and has the royal red colour Hereford enthusiasts love. 15M is out of a first calf heifer.



YV 76K, DAM OF 15M



YV 15M

CE	BW	WW	YW	MILK	TM	MCE	SC	CW	CowFert
7.7	1.6	40.6	61.6	26.0	46.3	1.5	0.4	66.3	19.7
Udder	TeatSize	MPI	FMI	RFI	PWG	Fat	REA	MARB	Carcass
1.2	1.3	138.5	84.7	105	21.0	0.024	0.21	0.14	65.3



YV 17M

EPD	CE	BW	WW	YW	MILK	TM	MCE	SC	CW	CowFert
	0.6	4.9	50.8	77.1	23.2	48.6	-1.4	0.8	71.0	16.4
	Udder	TeatSize	MPI	FMI	RFI	PWG	Fat	REA	MARB	Carcass
	1.4	1.5	112.3	78.8	107	26.3	0.104	0.04	0.25	57.8

17M YV 37H SILVER STRUCK ET 17M

YV 17M | C03118808 | FEB 24, 2024 | HORNED

SIRE AGA 18Z ZOOM STAN CREDITOR 77C
YV 77C MR CREDIT STRUCK 37H
YV 15Z MS ZAM STRUCK ET 35E

DAM YV 15Z SILVER STUD 38B
YV 38B MS SILVER STAR 94D
YV 30U MS STD STAR LASS 10B

5 STAR INFORMATION				
Calving Ease	Performance	Maternal	Efficiency	Carcass
***	*****	*****	***	***

INDIVIDUAL PERFORMANCE				
AGE OF DAM	5	BW	ADJ WW	IND
		89	719	101
PIGM. LEFT EYE	100	RibFat	REA	REA/100lbs
		0.23	10.25	0.85
PIGM. RIGHT EYE	100	%IMF	%LMY	RFI
		1.43	61.8	-0.003

17M is a curly haired, easy moving embryo son, and is a flush brother to 21M. He is from an outstanding mating of our great donor cow, 94D, which we are utilizing a son of, YV 33K. 17M is packed full of growth and is guaranteed to produce excellent females.



YV 94D, DAM OF 17M



YV 20M

EPD	CE	BW	WW	YW	MILK	TM	MCE	SC	CW	CowFert
	0.6	3.4	42.1	59.0	25.3	46.4	-4.7	0.0	66.7	19.7
	Udder	TeatSize	MPI	FMI	RFI	PWG	Fat	REA	MARB	Carcass
	1.2	1.3	118.5	24.0	101	16.9	0.004	-0.09	0.03	44.0

20M YV 48J SILVER CREEK ET 20M

YV 20M | C03118809 | FEB 22, 2024 | HORNED

SIRE BR 213B FORTY CREEK 234F
YV 234F SILVER CREEK 48J
YV 31A MS SILVER SUN ET 41F

DAM YV 915W SILVER STRUCK ET 42A
YV 42A MS SILVER STRUCK 112D
YV 148X MS SUPER LADY 36A

5 STAR INFORMATION				
Calving Ease	Performance	Maternal	Efficiency	Carcass
***	***	*****	***	***

INDIVIDUAL PERFORMANCE				
AGE OF DAM	5	BW	ADJ WW	IND
		77	711	93
PIGM. LEFT EYE	20	RibFat	REA	REA/100lbs
		0.14	10.91	0.99
PIGM. RIGHT EYE	0	%IMF	%LMY	RFI
		1.43	64.4	-0.052

This YV 48J embryo son, out of our old faithful 112D donor, is a mossy-haired, big-footed and well-rounded bull. His sire is working hard in the astute MJT program, where we were able to utilize him by AI.



YV 112D, DAM OF 20M



YV 21M

EPD	CE	BW	WW	YW	MILK	TM	MCE	SC	CW	CowFert
	-3.4	6.4	53.6	81.5	24.2	51.0	0.8	0.8	68.1	18.4
	Udder	TeatSize	MPI	FMI	RFI	PWG	Fat	REA	MARB	Carcass
	1.3	1.4	119.5	88.6	105	27.9	0.094	-0.10	0.24	62.0

21M YV 37H SILVER STRUCK ET 21M

YV 21M | C03118807 | FEB 22, 2024 | HORNED

SIRE AGA 18Z ZOOM STAN CREDITOR 77C
YV 77C MR CREDIT STRUCK 37H
YV 15Z MS ZAM STRUCK ET 35E

DAM YV 15Z SILVER STUD 38B
YV 38B MS SILVER STAR 94D
YV 30U MS STD STAR LASS 10B

5 STAR INFORMATION				
Calving Ease	Performance	Maternal	Efficiency	Carcass
***	****	*****	***	***

INDIVIDUAL PERFORMANCE				
AGE OF DAM	5	BW	ADJ WW	IND
		95	707	99
PIGM. LEFT EYE	100	RibFat	REA	REA/100lbs
		0.31	11.16	0.91
PIGM. RIGHT EYE	100	%IMF	%LMY	RFI
		2.00	60.5	0.060

This big goggled, big made embryo son, which is a full brother to 17M will be sure to catch your eye. His maternal sister was our very best first calver last spring with a big future ahead of her. You will find the same maternal power in 21M.



YV 94D, DAM OF 21M

23M

YV 33K SILVER CREEK 23M

YV 23M | C03118825 | FEB 27, 2024 | HORNED

SIRE YV 234F MR FORTY CREEK 42H
YV 42H MR SILVER CREEK 33K
YV 38B MS SILVER STAR 94D

DAM AGA 18Z ZOOM STAN CREDITOR 77C
YV 77C MS CREDIT MAMMA 100F
YV 15Z MS ZAMS MAMMA 18C

5 STAR INFORMATION

Calving Ease	Performance	Maternal	Efficiency	Carcass
***	****	*****	****	***

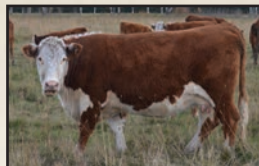
INDIVIDUAL PERFORMANCE

AGE OF DAM	8
PIGM. LEFT EYE	95
PIGM. RIGHT EYE	0

INDIVIDUAL PERFORMANCE

BW	ADJ WW	IND	ADJ YW	IND	
94	717	100	1006	95	
RibFat	REA	REA/100lbs	%IMF	%LMY	RFI
0.25	11.09	0.98	2.38	61.9	-0.039

YV 23M is a mid-sized, long-spined, smooth made YV 33K son with a maternally packed pedigree. His dam, 100F, raised the high selling bull in our 2025 bull sale, sold to Ridder Hereford Ranch of Nebraska.



YV 18C, GRANDDAM OF 23M



YV 23M

CE	BW	WW	YW	MILK	TM	MCE	SC	CW	CowFert
-0.3	4.6	46.4	69.2	22.5	45.7	-4.8	0.6	58.2	16.5
Udder	TeatSize	MPI	FMI	RFI	PWG	Fat	REA	MARB	Carcass
1.2	1.3	105.1	60.5	114	22.8	0.084	0.19	0.14	57.5

34M

YV 48J SILVER CREEK ET 34M

YV 34M | C03118813 | MAR 4, 2024 | HORNED

SIRE BR 213B FORTY CREEK 234F
YV 234F SILVER CREEK 48J
YV 31A MS SILVER SUN ET 41F

DAM YV 915W SILVER STRUCK ET 42A
YV 42A MS SILVER STRUCK 112D
YV 148X MS SUPER LADY 36A

5 STAR INFORMATION

Calving Ease	Performance	Maternal	Efficiency	Carcass
***	*****	*****	****	***

INDIVIDUAL PERFORMANCE

AGE OF DAM	5
PIGM. LEFT EYE	0
PIGM. RIGHT EYE	0

INDIVIDUAL PERFORMANCE

BW	ADJ WW	IND	ADJ YW	IND	
103	696	91	1110	98	
RibFat	REA	REA/100lbs	%IMF	%LMY	RFI
0.13	10.58	0.93	1.54	64.4	-0.046

Another embryo son of the YV 112D dam, he has an exceptional presence and a massive fore rib carrying into a wide base. 34M has maternal brothers being used at Bennett Ranch, Ironwood Ranch and Bertram Ranch.



YV 112D, DAM OF 34M



YV 34M

CE	BW	WW	YW	MILK	TM	MCE	SC	CW	CowFert
-7.9	6.8	56.1	86.3	22.4	50.5	-11.9	0.3	112.4	13.5
Udder	TeatSize	MPI	FMI	RFI	PWG	Fat	REA	MARB	Carcass
1.2	1.2	71.0	28.1	105	30.2	0.004	0.15	-0.17	58.1

36M

YV 144J SILVER CREEK 36M

YV 36M | C03118827 | MAR 7, 2024 | HORNED

SIRE BR 213B FORTY CREEK 234F
YV 234F MR FORTY CREEK 144J
YV 30U MS MAMA 44B

DAM AGA 18Z ZOOM STAN CREDITOR 77C
YV 77C MS SILVER CREDIT 66H
YV 37A MS SWEET SILVER 46E

5 STAR INFORMATION

Calving Ease	Performance	Maternal	Efficiency	Carcass
***	****	****	****	***

INDIVIDUAL PERFORMANCE

AGE OF DAM	6
PIGM. LEFT EYE	90
PIGM. RIGHT EYE	70

INDIVIDUAL PERFORMANCE

BW	ADJ WW	IND	ADJ YW	IND	
98	788	1410	1058	100	
RibFat	REA	REA/100lbs	%IMF	%LMY	RFI
0.12	10.33	0.90	1.18	64.5	-0.472

YV 36M is an eye appealing curly-haired, deep-flanked, loose-hided, 144J son. He is one of the most feed efficient bulls in the offering. We have been very pleased with 144J's calves, currently walking at OC Ranch.



YV 46E, DAM OF 36M



YV 36M

CE	BW	WW	YW	MILK	TM	MCE	SC	CW	CowFert
-2.4	6.2	52.7	77.4	21.2	47.6	-5.3	0.8	80.8	17.9
Udder	TeatSize	MPI	FMI	RFI	PWG	Fat	REA	MARB	Carcass
1.2	1.3	108.2	70.4	126	24.7	0.044	-0.05	0.10	68.1



YV 270M

EPD	CE	BW	WW	YW	MILK	TM	MCE	SC	CW	CowFert
	2.6	2.8	55.8	93.5	37.3	65.2	0.3	0.9	83.6	21.6
	Udder	TeatSize	MPI	FMI	RFI	PWG	Fat	REA	MARB	Carcass
	1.2	1.3	144.9	153.9	100	37.7	0.034	0.54	0.28	71.8

270M YV J354 MR INSIGHT ET 270M

YV 270M | C03118821 | MAR 7, 2024 | POLLED

SIRE SHF FORESIGHT B413 F158
SHF INSIGHT F158 J354 ET
SHF OKSANA 001A D03 ET

DAM BOYD 31Z BLUEPRINT 6153
PCL 6153 JADE 49G
PCL JADE 57T 31Y

5 STAR INFORMATION				
Calving Ease	Performance	Maternal	Efficiency	Carcass
***	*****	*****	***	*****

INDIVIDUAL PERFORMANCE		INDIVIDUAL PERFORMANCE				
AGE OF DAM	5	BW	ADJ WW	IND	ADJ YW	IND
PIGM. LEFT EYE	100	96	780	102	1209	106
PIGM. RIGHT EYE	100	RibFat	REA	REA/100lbs	%IMF	%LMY
		0.16	14.03	1.03	1.83	66.2
						0.274

YV 270M is a massive middled moderate powerhouse. He was our top pick in ours and LFH's embryo calf draft pick through our polled herd expansion program. His dam 49G was a pick from the Phantom Creek Dispersal. This bull does not disappoint.



DAWM 49G, DAM OF 270M



YV 38M

EPD	CE	BW	WW	YW	MILK	TM	MCE	SC	CW	CowFert
	3.9	2.4	45.8	80.6	24.6	47.5	0.4	0.7	89.8	23.7
	Udder	TeatSize	MPI	FMI	RFI	PWG	Fat	REA	MARB	Carcass
	1.3	1.4	149.1	114.9	99	34.8	0.024	0.47	0.10	74.1

38M YV 144J JADES FORTY CREEK 38M

YV 38M | C03117030 | MAR 10, 2024 | POLLED

BR 213B FORTY CREEK 234F
YV 234F MR FORTY CREEK 144J
YV 30U MS MAMA 44B

NJW 73S 456B POWER UP 100E ET
PCL 100E JADE 114H
PCL JADE 27S 33U

5 STAR INFORMATION				
Calving Ease	Performance	Maternal	Efficiency	Carcass
***	*****	*****	***	*****

INDIVIDUAL PERFORMANCE		INDIVIDUAL PERFORMANCE				
AGE OF DAM	6	BW	ADJ WW	IND	ADJ YW	IND
PIGM. LEFT EYE	100	83	712	99	1112	105
PIGM. RIGHT EYE	100	RibFat	REA	REA/100lbs	%IMF	%LMY
		0.19	12.77	1.03	1.44	64.6
						0.216

This extremely eye appealing and complete polled calf has performance and athleticism in a curly-haired and loose-hided package. His dam was our top pick from the famous Phantom Creek Dispersal, and has not disappointed.



DAWM 114H, DAM OF 38M



YV 41M

EPD	CE	BW	WW	YW	MILK	TM	MCE	SC	CW	CowFert
	0.2	4.1	57.9	92.6	22.9	51.9	1.5	1.1	105.8	19.4
	Udder	TeatSize	MPI	FMI	RFI	PWG	Fat	REA	MARB	Carcass
	1.2	1.3	129.8	93.0	105	34.7	0.056	0.16	0.10	73.5

41M YV 138H SILVER DUKE 41M

YV 41M | C03117606 | MAR 14, 2024 | HORNED

BR 028X SENSATION ET 101D
YV 101D MR DUKE STRUCK 138H
YV 15Z MS ZAM STRUCK 33D

YV 39D SUN DESIGN LAD 104F
YV 104F MS SILVER SUN 34K
YV 37A MS SILVER STRUCK 46D

5 STAR INFORMATION				
Calving Ease	Performance	Maternal	Efficiency	Carcass
***	*****	*****	***	***

INDIVIDUAL PERFORMANCE		INDIVIDUAL PERFORMANCE				
AGE OF DAM	4	BW	ADJ WW	IND	ADJ YW	IND
PIGM. LEFT EYE	100	84	718	100	1065	101
PIGM. RIGHT EYE	100	RibFat	REA	REA/100lbs	%IMF	%LMY
		0.13	12.33	1.09	1.23	65.7
						-0.002

This gentle teddy bear offers 100% pigment in both eyes, he is out of YV 138H which we were fortunate to use after selling to our friends at Red Rock Land and Cattle.



YV 46D, GRANDDAM OF 41M

43M YV 33K KINGSTON CREDIT 43M

YV 43M | C03117608 | MAR 20, 2024 | POLLED

SIRE PCL 4013 GENESEAKER ET 22G
PCL 22G KINGSTON 33K
PCL 6153 MISS JADE ET 56G

DAM YV 39D SUN DESIGN LAD 104F
YV 104F MS DESIGN CREDIT 49K
YV 77C MS CREDIT MAMMA 100F

5 STAR INFORMATION

Calving Ease	Performance	Maternal	Efficiency	Carcass
*****	*****	*****	*****	*****

INDIVIDUAL PERFORMANCE

AGE OF DAM	4
PIGM. LEFT EYE	100
PIGM. RIGHT EYE	100

INDIVIDUAL PERFORMANCE

BW	ADJ WW	IND	ADJ YW		IND
70	694	97	998		95
RibFat	REA	REA/100lbs	%IMF	%LMY	RFI
0.18	11.53	1.05	1.99	63.9	-0.163

This polled Kingston son is easy to look at with his short markings, mossy hair, added depth and elite efficiency ranking. He is soft made through his midsection and is sure to make powerful steers and easy doing cows. It's hard to believe he's a heifer's first calf.



YV 35C, GRANDDAM OF 43M



YV 43M

CE	BW	WW	YW	MILK	TM	MCE	SC	CW	CowFert
7.9	1.2	55.7	80.0	27.0	54.9	7.5	1.4	85.1	17.4
Udder	TeatSize	MPI	FMI	RFI	PWG	Fat	REA	MARB	Carcass
1.2	1.2	142.7	115.9	107	24.3	0.054	0.36	0.36	76.2

47M YV 33K ZAMS KINGSTON 47M

YV 47M | C03117611 | MAR 28, 2024 | POLLED

SIRE PCL 4013 GENESEAKER ET 22G
PCL 22G KINGSTON 33K
PCL 6153 MISS JADE ET 56G

DAM YV 39D SUN DESIGN LAD 104F
YV 104F MS ZAMS DESING 45K
YV 15Z MS ZAM 112E

5 STAR INFORMATION

Calving Ease	Performance	Maternal	Efficiency	Carcass
***	*****	*****	***	*****

INDIVIDUAL PERFORMANCE

AGE OF DAM	4
PIGM. LEFT EYE	100
PIGM. RIGHT EYE	100

INDIVIDUAL PERFORMANCE

BW	ADJ WW	IND	ADJ YW	IND	
88	768	107	1181	112	
RibFat	REA	REA/100lbs	%IMF	%LMY	RFI
0.11	12.55	0.99	2.03	66.3	0.071

Another polled Kingston son out of a first calf heifer that has added performance and combines goggled eyes with curly hair. 47M is a carcass specialist, indexing 113 and 136 for ribeye and intramuscular fat, respectively.



YV 35C, GRANDDAM OF 43M



YV 47M

CE	BW	WW	YW	MILK	TM	MCE	SC	CW	CowFert
1.4	4.5	66.7	101.2	27.9	61.3	6.3	1.2	87.4	17.6
Udder	TeatSize	MPI	FMI	RFI	PWG	Fat	REA	MARB	Carcass
1.3	1.2	136.4	130.0	96	34.5	0.024	0.50	0.32	82.0

48M YV 234F FORTY CREEK 48M

YV 48M | C03119796 | MAR 28, 2024 | HORNED

SIRE BR 58Y STANDARD 213B
BR 213B FORTY CREEK 234F
BR 15Z LADY ET 153C

DAM YV 7C LIGHT CARGO 13F
YV 13F MS LIGHT CREDIT 13H
YV 77C MS SILVER CREDIT 77F

5 STAR INFORMATION

Calving Ease	Performance	Maternal	Efficiency	Carcass
***	*****	*****	*****	*****

INDIVIDUAL PERFORMANCE

AGE OF DAM	6
PIGM. LEFT EYE	100
PIGM. RIGHT EYE	100

INDIVIDUAL PERFORMANCE

BW	ADJ WW	IND	ADJ YW	IND	
92	747	104	1102	104	
RibFat	REA	REA/100lbs	%IMF	%LMY	RFI
0.19	12.25	0.98	1.33	64.2	-0.090

48M has been an outstanding bull since birth, he exhibits an extreme muscle pattern in a moderate package alongside a large scrotal and hooded eye, with an excellent-uddered dam that does not miss. 48M has froze semen and will be utilized in our AI program in 2026.



YV 13H, DAM OF 48M



YV 48M

CE	BW	WW	YW	MILK	TM	MCE	SC	CW	CowFert
-7.9	6.8	56.1	86.3	22.4	50.5	-11.9	0.3	112.4	13.5
Udder	TeatSize	MPI	FMI	RFI	PWG	Fat	REA	MARB	Carcass
1.2	1.2	71.0	28.1	105	30.2	0.004	0.15	-0.17	58.1



YV 58M

EPD	CE	BW	WW	YW	MILK	TM	MCE	SC	CW	CowFert
	7.0	1.8	41.2	64.1	28.7	49.3	2.5	0.6	54.1	17.5
	Udder	TeatSize	MPI	FMI	RFI	PWG	Fat	REA	MARB	Carcass
	1.0	1.1	130.9	96.0	104	22.9	0.044	-0.23	0.19	49.0

58M YV 79K MR ZAMS EXPRESS 58M

YV 58M | C03117892 | MAR 31, 2024 | HORNED

SIRE BR 16E EXPRESS ET 64H
BR 64H EXPRESS 79K
BR 115D DOMINO 224F

DAM AGA 18Z ZOOM STAN CREDITOR 77C
YV 77C MS ZOOM ZAM 128K
YV 15Z ZAMS GIRL 18D

5 STAR INFORMATION							
Calving Ease		Performance		Maternal	Efficiency	Carcass	
*****		****		****	****	***	
INDIVIDUAL PERFORMANCE		INDIVIDUAL PERFORMANCE					
AGE OF DAM	4	BW	ADJ WW	IND	ADJ YW	IND	
PIGM. LEFT EYE	80	78	698	115	1010	96	
PIGM. RIGHT EYE	100	RibFat	REA	REA/100lbs	%IMF	%LMY	RFI
		0.10	8.09	0.86	1.30	63.4	-0.099

58M is an attractive BR 79K son that stands out for his long spine and smoothness through his shoulder that patterns his grandsire ALNK 77C. 58M has 5 stars for calving ease and is a heifer's first calf.



BR 224F, GRANDDAM OF 58M



YV 63M

EPD	CE	BW	WW	YW	MILK	TM	MCE	SC	CW	CowFert
	-2.6	6.9	62.4	93.0	22.5	53.7	-1.8	0.9	106.4	18.9
	Udder	TeatSize	MPI	FMI	RFI	PWG	Fat	REA	MARB	Carcass
	1.2	1.2	119.6	68.1	110	30.6	0.034	-0.01	0.08	70.2

63M YV 19J MR FORTY CREDITOR 63M

YV 63M | C03117893 | APR 3, 2024 | HORNED

SIRE BR 213B FORTY CREEK 234F
YV 234F FORTY CREEK ET 19J
YV 15Z MS ZAM 30B

DAM AGA 18Z ZOOM STAN CREDITOR 77C
YV 77C CREDITOR 131G
YV 15Z PRETTY ZAM 78D

5 STAR INFORMATION											
Calving Ease		Performance		Maternal		Efficiency		Carcass			
***		*****		*****		*****		***			
INDIVIDUAL PERFORMANCE			INDIVIDUAL PERFORMANCE								
AGE OF DAM		7	BW		ADJ WW		IND		ADJ YW		IND
PIGM. LEFT EYE		100	97	772	117	1109	107				
PIGM. RIGHT EYE		100	RibFat	REA	REA/100lbs	%IMF	%LMY	RFI			
			0.07	10.44	0.94	1.37	65.8	-0.163			

63M is a powerful larger frame bull with a nice skull shape. His sire, 19J, is a full brother to two of our most perfect up-and-coming young cows, and his maternal brother is working hard at M Bar N Land and Cattle.



YV 131G, DAM OF 63M



YV 68M

EPD	CE	BW	WW	YW	MILK	TM	MCE	SC	CW	CowFert
	8.9	1.3	59.9	86.3	29.7	59.7	6.9	1.6	87.9	20.0
	Udder	TeatSize	MPI	FMI	RFI	PWG	Fat	REA	MARB	Carcass
	1.4	1.4	156.3	123.7	99	26.4	0.024	0.40	0.30	77.5

68M YV 33K KINGSTON CREDIT 68M

YV 68M | C03118743 | APR 8, 2024 | POLLED

SIRE PCL 4013 GENESEEKER ET 22G
PCL 22G KINGSTON 33K
PCL 6153 MISS JADE ET 56G

DAM YV 77C CREDITOR 22G
YV 22G MS SUPER CREDIT 56J
YV 7C MS SUPER CARGO 42G

5 STAR INFORMATION													
Calving Ease		Performance		Maternal		Efficiency		Carcass					
*****		*****		****		****		***					
INDIVIDUAL PERFORMANCE			INDIVIDUAL PERFORMANCE										
AGE OF DAM		5	BW		ADJ WW		IND		ADJ YW		IND		
PIGM. LEFT EYE		100	76		747		113		1121		108		
PIGM. RIGHT EYE		100	RibFat		REA		REA/100lbs		%IMF		%LMY		RFI
			0.14		11.81		0.97		1.21		65.1		-0.03

68K exemplifies what we are working towards in our polled program. He is soft made, loose-hidden, with a very hooded eye and an overwhelming presence. With a 76 lb birth weight and a 113 and 108 index for weaning weight and yearling weight, respectively, he leaves very little to be desired.



YV 42G, GRANDDAM OF 68M

69M YV 4K MR WEST KEEPER 69M

YV 69M | C03124885 | APR 7, 2024 | HORNED

SIRE AGA 47F DOMINO ET 2Y CR 87R WEST LAD 15B
AGA 2Y MO LE DOMINO KEEPER 4K DAM AGA 15B MISS WEST KRISTY 97K
AGA 16D MISS DRAFT HOME 77H AGA 705 MISS EASYGOING 129X

5 STAR INFORMATION

Calving Ease	Performance	Maternal	Efficiency	Carcass
****	*****	*****	*****	*****

INDIVIDUAL PERFORMANCE

AGE OF DAM	4
PIGM. LEFT EYE	100
PIGM. RIGHT EYE	100

INDIVIDUAL PERFORMANCE

BW	ADJ WW	IND	ADJ YW		IND
80	763	115	1194		115
RibFat	REA	REA/100lbs	%IMF	%LMY	RFI
0.28	9.60	0.82	2.06	60.1	-0.315

A rare package here, a complete outcross. 69M was purchased in calf in the high-selling female at the Ulrich Herefords dispersal. With true Hereford character, he is ideally-marked, mossy-haired, and a direct descent of Peters cornerstone cow, 129X. His dam 97K is a tremendous young cow that we couldn't be happier with. 69M has froze semen and will be utilized in our AI program in 2026.



U 97K, DAM OF 69M



YV 69M

CE	BW	WW	YW	MILK	TM	MCE	SC	CW	CowFert
4.8	4.3	58.7	89.7	19.9	49.3	-0.5	0.8	80.9	15.6
Udder	TeatSize	MPI	FMI	RFI	PWG	Fat	REA	MARB	Carcass
1.4	1.4	118.5	110.0	115	31.0	0.064	-0.02	0.28	54.7

70M YV 234F ZAMS FORTY CREEK 70M

YV 70M | C03124886 | APR 8, 2024 | HORNED

BR 58Y STANDARD 213B YV 35X ZAM 15Z
BR 213B FORTY CREEK 234F DAM YV 15Z PRAIRIE ZAM LASS 55C
BR 15Z LADY ET 153C YV 915W MS PRAIRIE STAR 4Y

5 STAR INFORMATION

Calving Ease	Performance	Maternal	Efficiency	Carcass
***	*****	*****	***	***

INDIVIDUAL PERFORMANCE

AGE OF DAM	11
PIGM. LEFT EYE	100
PIGM. RIGHT EYE	60

INDIVIDUAL PERFORMANCE

BW	ADJ WW	IND	ADJ YW		IND
88	603	N/A	954		0
RibFat	REA	REA/100lbs	%IMF	%LMY	RFI
0.10	11.91	1.15	1.56	66.1	0.106

70M is a seriously stout direct Forty Creek son. He is the eye appealing, moderate kind that we work hard to produce. His deep chest floor and curly red hair make him a complete package.



YV 7X, GRANDDAM OF 70M



YV 70M

CE	BW	WW	YW	MILK	TM	MCE	SC	CW	CowFert
0.5	4.1	50.7	75.7	15.6	41.0	-4.5	0.7	102.1	22.0
Udder	TeatSize	MPI	FMI	RFI	PWG	Fat	REA	MARB	Carcass
1.1	1.3	128.5	69.4	102	25.0	0.034	0.32	0.12	74.3

73M YV 234F FORTY CREEK 73M

YV 73M | C03118746 | APR 8, 2024 | HORNED

BR 58Y STANDARD 213B YV 101D MR DUKES SKY 112F
BR 213B FORTY CREEK 234F DAM YV 112F DUKES SUNSHINE 57J
BR 15Z LADY ET 153C YV 30U MS SUNSHINE LASS ET 38A

5 STAR INFORMATION

Calving Ease	Performance	Maternal	Efficiency	Carcass
***	*****	*****	*****	*****

INDIVIDUAL PERFORMANCE

AGE OF DAM	5
PIGM. LEFT EYE	100
PIGM. RIGHT EYE	70

INDIVIDUAL PERFORMANCE

BW	ADJ WW	IND	ADJ YW		IND
84	729	110	1086		105
RibFat	REA	REA/100lbs	%IMF	%LMY	RFI
0.22	10.91	0.95	1.55	62.5	-0.24

73M is hard to miss, he is extremely complete. He is a right-sized bull with the Forty Creek hip and the big body of his maternal grandsire YV 112F - you will take a second look at this bull that is getting better by the day.



YV 729T, GRANDDAM OF 73M



YV 73M

CE	BW	WW	YW	MILK	TM	MCE	SC	CW	CowFert
-1.7	4.5	56.1	83.0	21.7	49.8	-2.6	0.9	98.8	21.2
Udder	TeatSize	MPI	FMI	RFI	PWG	Fat	REA	MARB	Carcass
1.1	1.2	127.5	57.1	113	26.9	0.064	0.31	0.11	77.8



YV 75M

EPD	CE	BW	WW	YW	MILK	TM	MCE	SC	CW	CowFert
	6.4	2.6	45.7	69.6	24.0	46.9	-0.5	0.5	90.8	19.7
Udder	TeatSize	MPI	FMI	RFI	PWG	Fat	REA	MARB	Carcass	
	1.2	1.3	133.5	54.2	111	23.9	0.034	0.18	0.04	67.9

75M YV 68K SUPER CREEK 75M

YV 75M | C03118748 | APR 8, 2024 | HORNED

SIRE YV 15Z SUPER ZAM 22C
YV 22C MR ZAMS CREDIT 68K
YV MS SILVER CREDIT ET 60F

DAM BR 213B FORTY CREEK 234F
YV 234F MS FORTY CREEK ET 24J
YV 31A SUNNY LASS 27D

5 STAR INFORMATION							
Calving Ease		Performance		Maternal	Efficiency	Carcass	
****		****		*****	****	***	
INDIVIDUAL PERFORMANCE		INDIVIDUAL PERFORMANCE					
AGE OF DAM	5	BW	ADJ WW	IND	ADJ YW	IND	
PIGM. LEFT EYE	100	75	712	0	1045	0	
PIGM. RIGHT EYE	80	RibFat	REA	REA/100lbs	%IMF	%LMY	RFI
		0.31	11.91	1.06	1.28	61.0	-0.064

This YV 68K son is very shaggy like his grandsire, 22C. We love him for his deep flank and fore rib, his bone structure and traditional Hereford markings. His dam, 24J, is an up-and-coming embryo daughter out of our flush cow, 27D, and is possibly the biggest-middled cow in the herd.



YV 24J, DAM OF 75M



YV 85M

EPD	CE	BW	WW	YW	MILK	TM	MCE	SC	CW	CowFert
	-1.1	4.8	47.5	73.2	16.8	40.6	-5.3	0.8	89.6	18.8
Udder	TeatSize	MPI	FMI	RFI	PWG	Fat	REA	MARB	Carcass	
	0.9	0.9	111.2	78.3	116	25.7	0.054	0.11	0.15	65.1

85M YV 234F FORTY CREEK 85M

YV 85M | C03124937 | APR 10, 2024 | HORNED

SIRE BR 58Y STANDARD 213B
BR 213B FORTY CREEK 234F
BR 15Z LADY ET 153C

DAM AGA 18Z ZOOM STAN CREDITOR 77C
YV 77C MS MAMMA CREDIT 110J
YV 15Z MS ZAMS MAMMA 18C

5 STAR INFORMATION						
Calving Ease		Performance		Maternal	Efficiency	Carcass
***		***		****	*****	****
INDIVIDUAL PERFORMANCE		INDIVIDUAL PERFORMANCE				
AGE OF DAM	5	BW	ADJ WW	IND	ADJ YW	IND
PIGM. LEFT EYE	100	90	598	90	945	91
PIGM. RIGHT EYE	100	RibFat	REA	REA/100lbs	%IMF	%LMY RFI
		0.16	10.25	1.00	2.09	63.5 -0.201

Stamped with the classic Forty Creek look, 85M is a red-eyed, long-spined bull. As you can see from his picture, he has a strong herd bull presence.



YV 18C, GRANDDAM OF 85M



YV 86M

EPD	CE	BW	WW	YW	MILK	TM	MCE	SC	CW	CowFert
	3.9	3.9	63.2	90.0	27.0	58.6	5.5	1.4	88.2	17.3
Udder	TeatSize	MPI	FMI	RFI	PWG	Fat	REA	MARB	Carcass	
	1.3	1.3	135.8	109.4	101	26.8	0.024	0.33	0.23	77.4

86M YV 33K KINGS CREDIT 86M

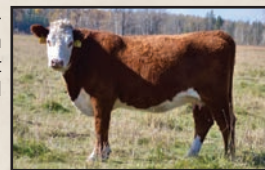
YV 86M | C03118875 | APR 11, 2024 | POLLED

SIRE PCL 4013 GENESEEKER ET 22G
PCL 22G KINGSTON 33K
PCL 6153 MISS JADE ET 56G

DAM AGA 18Z ZOOM STAN CREDITOR 77C
YV 77C MS SILVER CREDIT ET 46F
YV 82R SILVER GAL 920W

5 STAR INFORMATION														
Calving Ease		Performance		Maternal		Efficiency		Carcass						
***		*****		*****		*****		***						
INDIVIDUAL PERFORMANCE			INDIVIDUAL PERFORMANCE											
AGE OF DAM		8	BW		ADJ WW		IND		ADJ YW		IND			
PIGM. LEFT EYE		100	93		719		109		1070		103			
PIGM. RIGHT EYE		100	RibFat		REA		REA/100lbs		%IMF		%LMY		RFI	
			0.08		11.76		1.02		1.25		66.5		-0.139	

Polled and proud, this Kingston son is well-marked with an athletic build. His dam is an embryo daughter directly out of 920W, a cow that has 34 registered offspring, with both polled and horned herdsires being used.



YV 46F, DAM OF 86M

88M YV 33K KINGSTON 88M

YV 88M | C03118877 | APR 11, 2024 | POLLED

SIRE PCL 4013 GENESEEKER ET 22G
PCL 22G KINGSTON 33K
PCL 6153 MISS JADE ET 56G

DAM LBH 102T SUPER RIB 148X
YV 148X SILVER SKY LASS 6C
YV 731T SILVER 972W

5 STAR INFORMATION

Calving Ease	Performance	Maternal	Efficiency	Carcass
***	***	****	*****	***

INDIVIDUAL PERFORMANCE

AGE OF DAM	11
PIGM. LEFT EYE	100
PIGM. RIGHT EYE	100

INDIVIDUAL PERFORMANCE					
BW	ADJ WW	IND		ADJ YW	IND
97	628	95		953	92
RibFat	REA	REA/100lbs	%IMF	%LMY	RFI
0.08	10.66	1.04	0.79	65.7	-0.238

YV 88M is a royal red bull with a wide top and deep chest. His dam 6C, is an 11-year-old power cow that keeps producing year after year.



YV 6C, DAM OF 88M



YV 88M

CE	BW	WW	YW	MILK	TM	MCE	SC	CW	CowFert
-1.6	4.8	63.2	85.8	25.6	57.2	2.7	1.3	91.9	14.0
Udder	TeatSize	MPI	FMI	RFI	PWG	Fat	REA	MARB	Carcass
1.3	1.4	108.8	92.4	105	22.6	-0.026	0.36	0.12	71.5

89M YV 234F FORTY CREEK 89M

YV 89M | C03118878 | APR 12, 2024 | HORNED

SIRE BR 58Y STANDARD 213B
BR 213B FORTY CREEK 234F
BR 15Z LADY ET 153C

DAM YV 30U MR STAN SUNSHINE ET 31A
YV 31A SUNNY LASS 27D
YV 15Z MS ZAM 30B

5 STAR INFORMATION

Calving Ease	Performance	Maternal	Efficiency	Carcass
***	***	*****	*****	***

INDIVIDUAL PERFORMANCE

AGE OF DAM	10
PIGM. LEFT EYE	100
PIGM. RIGHT EYE	30

INDIVIDUAL PERFORMANCE					
BW	ADJ WW	IND		ADJ YW	IND
95	662	100		977	94
RibFat	REA	REA/100lbs	%IMF	%LMY	RFI
0.06	8.98	0.86	0.18	65.0	-0.110

YV 27D is the queen of making herd bulls. 89M is a soft made, well-rounded bull. He has full brothers being used at Carmichael Herefords in South Dakota, Riddder Herefords in Nebraska, along with maternal brothers at Wyatt Farms and Braun Ranch.



YV 27D, DAM OF 89M



YV 89M

CE	BW	WW	YW	MILK	TM	MCE	SC	CW	CowFert
-2.0	4.7	49.6	73.9	22.3	47.1	-2.9	0.7	107.8	22.9
Udder	TeatSize	MPI	FMI	RFI	PWG	Fat	REA	MARB	Carcass
1.3	1.4	131.5	59.4	112	24.3	0.004	0.08	-0.05	63.7

92M YV 68K ZAMS CREDIT 92M

YV 92M | C03118934 | APR 13, 2024 | HORNED

SIRE YV 15Z SUPER ZAM 22C
YV 22C MR ZAMS CREDIT 68K
YV MS SILVER CREDIT ET 60F

DAM BR 028X SENSATION ET 101
YV 101D SILVER DUCHESS 81J
YV 77C MS SILVER CREDIT ET 38F

5 STAR INFORMATION

Calving Ease	Performance	Maternal	Efficiency	Carcass
***	*****	*****	*****	***

INDIVIDUAL PERFORMANCE

AGE OF DAM	5
PIGM. LEFT EYE	0
PIGM. RIGHT EYE	0

INDIVIDUAL PERFORMANCE					
BW	ADJ WW	IND	ADJ YW		IND
91	740	112	1165		113
RibFat	REA	REA/100lbs	%IMF	%LMY	RFI
0.12	11.08	0.93	1.42	65.0	-0.265

92M carries deep into his twist with head carry that will catch your eye. He is of royal pedigree with five donor cows in his short pedigree. Double bred 77C gives him five stars and a top percentile ranking for feed efficiency.



YV 38F, GRANDDAM OF 92M



YV 92M

CE	BW	WW	YW	MILK	TM	MCE	SC	CW	CowFert
3.7	3.7	50.7	82.8	30.9	56.3	1.3	0.7	69.0	18.7
Udder	TeatSize	MPI	FMI	RFI	PWG	Fat	REA	MARB	Carcass
1.1	1.2	132.3	92.3	115	32.1	0.054	0.06	0.13	64.9



YV 93M

EPD	CE	BW	VW	YW	MILK	TM	MCE	SC	CW	CowFert
	1.3	4.2	75.9	114.7	36.2	74.2	3.4	1.7	100.9	17.1
Udder	TeatSize	MPI	FMI	RFI	PWG	Fat	REA	MARB	Carcass	
	1.3	1.4	133.7	116.7	95	38.8	0.014	0.64	0.21	88.3

93M YV 33K KINGSTON 93M

YV 93M | C03118935 | APR 13, 2024 | POLLED

SIRE PCL 4013 GENESEEKER ET 22G
PCL 22G KINGSTON 33K
PCL 6153 MISS JADE ET 56G

DAM NJW 73S W18 HOMEGROWN 8Y ET
YV 8Y MS SILVER GROWN 18J
YV 37A MS SILVER STRUCK 46D

5 STAR INFORMATION

Calving Ease	Performance	Maternal	Efficiency	Carcass
***	*****	***	***	*****

INDIVIDUAL PERFORMANCE

AGE OF DAM	5
PIGM. LEFT EYE	100
PIGM. RIGHT EYE	100

INDIVIDUAL PERFORMANCE

BW	ADJ WW	IND	ADJ YW	IND	
85	829	125	1292	125	
RibFat	REA	REA/100lbs	%IMF	%LMY	RFI
0.12	12.19	0.90	1.59	65.8	0.090

Full of meat, 93M is an outlier in his shape with a huge hip and massive mid section. This carries through to his performance numbers, with an adjusted weaning weight of 829 lbs, indexing 125 for both weaning and yearling weight.



YV 46D, GRANDDAM OF 93M



YV 95M

EPD	CE	BW	VW	YW	MILK	TM	MCE	SC	CW	CowFert
	3.2	3.2	43.1	67.9	16.7	38.3	0.5	0.7	98.3	19.5
Udder	TeatSize	MPI	FMI	RFI	PWG	Fat	REA	MARB	Carcass	
	1.1	1.2	127.2	73.1	108	24.8	0.074	0.08	0.20	65.0

95M YV 234F FORTY CREEK 95M

YV 95M | C03118937 | APR 14, 2024 | HORNED

SIRE BR 58Y STANDARD 213B
BR 213B FORTY CREEK 234F
BR 15Z LADY ET 153C

DAM LBH 268P STANDARD 30U
YV 30U MISS SUNSHINE ET 13A
AGA 72M MISS SUNSHINE LAD 282P

5 STAR INFORMATION

Calving Ease	Performance	Maternal	Efficiency	Carcass
***	***	****	***	***

INDIVIDUAL PERFORMANCE

AGE OF DAM	13
PIGM. LEFT EYE	30
PIGM. RIGHT EYE	70

INDIVIDUAL PERFORMANCE

BW	ADJ WW	IND	ADJ YW		IND
82	594	90	986		95
RibFat	REA	REA/100lbs	%IMF	%LMY	RFI
0.25	9.61	0.90	2.12	60.8	0.035

95M is a well made bull. His dam, 13A, has raised 11 natural calves and continues to produce - its neat to see that all of her registered calves have been born within 10 days every year, a true testament to her fertility and longevity.



YV 13A, DAM OF 95M



YV 99M

EPD	CE	BW	VW	YW	MILK	TM	MCE	SC	CW	CowFert
	1.5	4.0	50.6	73.5	20.9	46.2	-3.0	0.7	88.2	18.4
Udder	TeatSize	MPI	FMI	RFI	PWG	Fat	REA	MARB	Carcass	
	1.1	1.1	118.2	56.0	121	22.9	0.054	0.24	0.08	74.2

99M YV 234F CREEKS CREDIT 99M

YV 99M | C03118941 | APR 14, 2024 | HORNED

SIRE BR 58Y STANDARD 213B
BR 213B FORTY CREEK 234F
BR 15Z LADY ET 153C

DAM AGA 18Z ZOOM STAN CREDITOR 77C
YV 77C MS ZAM CREDIT 99G
YV 15Z MS ZAM 66C

5 STAR INFORMATION

Calving Ease	Performance	Maternal	Efficiency	Carcass
***	****	****	****	***

INDIVIDUAL PERFORMANCE

AGE OF DAM	7
PIGM. LEFT EYE	50
PIGM. RIGHT EYE	70

INDIVIDUAL PERFORMANCE

BW	ADJ WW	IND	ADJ YW	IND	
84	721	109	1047	101	
RibFat	REA	REA/100lbs	%IMF	%LMY	RFI
0.19	11.61	1.06	1.17	63.7	-0.368

99M is square-made back to front. With one of the best RFI's in the pen, he will leave feed in the stack and daughters out grazing all winter.



YV 153C, GRANDDAM OF 99M

102M YV 38K MR DUKES CARGO 102M

YV 102M | C03130022 | APR 16, 2024 | HORNED

SIRE YV 77C CREDITOR 22G YV 7C LIGHT CARGO 13F
YV 22G MR CREDITOR DUKE 38K YV 13F MS CARGO 121H
YV 101D DUCHESS 144H YV 101D ZAMS DUCHESS 22F

5 STAR INFORMATION

Calving Ease	Performance	Maternal	Efficiency	Carcass
*****	***	*****	***	***

INDIVIDUAL PERFORMANCE

AGE OF DAM	6
PIGM. LEFT EYE	100
PIGM. RIGHT EYE	40

INDIVIDUAL PERFORMANCE

BW	ADJ WW	IND	ADJ YW	IND
65	587	N/A	934	N/A
RibFat	REA	REA/100lbs	%IMF	%LMY
N/A	N/A	N/A	N/A	N/A
				-0.011

102M is a proud, smooth-made bull with a lot of good in his pedigree. His sire, YV 38K, was used as a yearling bull showing a lot of promise at a young age. 102's maternal brother was purchased in our 2025 sale by Bob Earl who has a good eye for quality cattle.



YV 22F, GRANDDAM OF 102M



YV 102M

CE	BW	WW	YW	MILK	TM	MCE	SC	CW	CowFert
6.5	1.4	45.8	64.7	29.5	52.4	6.3	1.0	71.6	24.14
Udder	TeatSize	MPI	FMI	RFI	PWG	Fat	REA	MARB	Carcass
1.2	1.3	166.0	90.4	107	18.9	0.044	0.13	0.21	66.3

106M YV 234F FORTY CREEKS 106M

YV 106M | C03118945 | APR 17, 2024 | HORNED

BR 58Y STANDARD 213B BR 028X SENSATION ET 101D
BR 213B FORTY CREEK 234F YV 101D ZAMS DUCHESS 22F
BR 15Z LADY ET 153C YV 15Z ZAMS LADY 21D

5 STAR INFORMATION

Calving Ease	Performance	Maternal	Efficiency	Carcass
***	****	*****	***	***

INDIVIDUAL PERFORMANCE

AGE OF DAM	8
PIGM. LEFT EYE	100
PIGM. RIGHT EYE	100

INDIVIDUAL PERFORMANCE

BW	ADJ WW	IND	ADJ YW	IND
88	693	105	1048	101
RibFat	REA	REA/100lbs	%IMF	%LMY
0.22	11.75	1.02	1.04	63.1
				0.026

This Forty Creek son has explosive shape and a excellent eye set. His dam, 22F, does an excellent job stamping her calves - she has sons working in Alberta, Saskatchewan, and half of the western States.



YV 22F, DAM OF 106M



YV 106M

CE	BW	WW	YW	MILK	TM	MCE	SC	CW	CowFert
0.8	2.7	48.6	72.8	25.4	49.7	-1.1	0.8	91.3	21.3
Udder	TeatSize	MPI	FMI	RFI	PWG	Fat	REA	MARB	Carcass
1.1	1.2	132.4	58.6	108	24.2	0.064	0.28	0.07	72.9

113M YV 33K SILVER CREEK 113M

YV 113M | C03119109 | APR 20, 2024 | HORNED

YV 234F MR FORTY CREEK 42H BR 213B FORTY CREEK 234F
YV 42H MR SILVER CREEK 33K YV 234F MS WISKEY GIRL 21H
YV 38B MS SILVER STRUCK 94D YV 15Z MS ZAM STRUCK 19C

5 STAR INFORMATION

Calving Ease	Performance	Maternal	Efficiency	Carcass
***	*****	*****	***	*****

INDIVIDUAL PERFORMANCE

AGE OF DAM	6
PIGM. LEFT EYE	90
PIGM. RIGHT EYE	40

INDIVIDUAL PERFORMANCE

BW	ADJ WW	IND	ADJ YW	IND
96	701	106	1138	110
RibFat	REA	REA/100lbs	%IMF	%LMY
0.23	12.00	1.02	1.20	63.0
				-0.236

This bull is a unit and always has been, from his shaggy hair to his long side, he is extremely well made. His maternal brother sold to our friends at Lazy RH Ranch as the high-selling polled bull in our inaugural on-farm sale.



YV 21H, DAM OF 113M



YV 113M

CE	BW	WW	YW	MILK	TM	MCE	SC	CW	CowFert
-6.0	6.5	57.2	89.8	23.7	52.3	-9.1	0.6	88.7	18.2
Udder	TeatSize	MPI	FMI	RFI	PWG	Fat	REA	MARB	Carcass
1.1	1.2	99.6	38.1	110	32.6	0.064	0.40	-0.04	67.3



YV 117M

EPD	CE	BW	WW	YW	MILK	TM	MCE	SC	CW	CowFert
	7.3	2.0	46.8	75.6	27.0	50.4	4.4	0.5	93.5	12.8
	Udder	TeatSize	MPI	FMI	RFI	PWG	Fat	REA	MARB	Carcass
	1.0	1.0	113.9	83.1	99	28.8	0.054	0.08	0.07	67.3

117M YV 104F SUN DESIGN 117M

YV 117M | C03119791 | APR 21, 2024 | HORNED

SIRE YV 915W DESIGNER ET 39D
YV 39D SUN DESIGN LAD 104F
YV 34W SUNSHINE GIRL 35C

DAM NJW 73S W18 HOMEGROWN 8Y ET
YV 8Y MS HOMEGROWN 61G
YV 15Z MS ZAM 24B

5 STAR INFORMATION

Calving Ease	Performance	Maternal	Efficiency	Carcass
***	*****	***	***	***

INDIVIDUAL PERFORMANCE

AGE OF DAM	7
PIGM. LEFT EYE	100
PIGM. RIGHT EYE	100

INDIVIDUAL PERFORMANCE

BW	ADJ WW	IND	ADJ YW		IND
80	712	108	1105		107
RibFat	REA	REA/100lbs	%IMF	%LMY	RFI
0.16	11.21	1.00	1.40	64.2	0.159

YV 117M boasts a huge spread, indexing 112 for birth weight and 108 and 107, respectively, for weaning and yearling weight indexes. He is a more moderate birth weight bull out of the powerful 104F sire.



YV 35C, GRANDDAM OF 117M



YV 119M

EPD	CE	BW	WW	YW	MILK	TM	MCE	SC	CW	CowFert
	-4.4	5.5	48.9	68.5	15.5	40.0	-5.4	0.6	86.1	17.8
	Udder	TeatSize	MPI	FMI	RFI	PWG	Fat	REA	MARB	Carcass
	1.0	1.1	101.7	33.1	111	19.6	0.024	0.31	-0.03	70.3

119M YV 234F FORTY CREEK 119M

YV 119M | C03119114 | APR 21, 2024 | HORNED

SIRE BR 58Y STANDARD 213B
BR 213B FORTY CREEK 234F
BR 15Z LADY ET 153C

DAM YV STAR STRUCK 915W
YV 915W MS SILVER STAN 95C
YV 82R RED STAN 705T282P

5 STAR INFORMATION

Calving Ease	Performance	Maternal	Efficiency	Carcass
***	****	****	****	***

INDIVIDUAL PERFORMANCE

AGE OF DAM	11
PIGM. LEFT EYE	100
PIGM. RIGHT EYE	80

INDIVIDUAL PERFORMANCE					
BW	ADJ WW	IND	ADJ YW	IND	
91	585	88	9.4	87	
RibFat	REA	REA/100lbs	%IMF	%LMY	RFI
0.11	12.11	1.23	1.09	66.0	-0.057

This bull is an absolute tank. 119M is packed full of meat from top to bottom, with a moderate stance he is sure to leave his calves with the big hip desired.



AGA 282P, GRANDDAM OF 119M



YV 121M

EPD	CE	BW	WW	YW	MILK	TM	MCE	SC	CW	CowFert
	-4.2	5.9	52.4	81.3	21.7	47.9	-6.7	0.3	79.2	14.4
	Udder	TeatSize	MPI	FMI	RFI	PWG	Fat	REA	MARB	Carcass
	1.3	1.4	87.9	21.0	109	28.9	-0.006	0.30	-0.16	55.0

121M YV 33K SILVER STRUCK 121M

YV 121M | C03119125 | APR 22, 2024 | HORNED

SIRE YV 234F MR FORTY CREEK 42H
YV 42H MR SILVER CREEK 33K
YV 38B MS SILVER STAR 94D

DAM YV 915W SILVER STRUCK ET 42A
YV 42A MS SILVER STRUCK 112D
YV 148X MS SUPER LADY 36A

5 STAR INFORMATION

Calving Ease	Performance	Maternal	Efficiency	Carcass
***	****	****	****	***

INDIVIDUAL PERFORMANCE

AGE OF DAM	10
PIGM. LEFT EYE	40
PIGM. RIGHT EYE	0

INDIVIDUAL PERFORMANCE					
BW	ADJ WW	IND	ADJ YW	IND	
97	651	98	1066	103	
RibFat	REA	REA/100lbs	%IMF	%LMY	RFI
0.07	12.03	1.04	0.12	66.9	-0.134

YV 121M has a neat look and a neat pedigree. He is the natural calf out of the 10-year-old donor cow, 112D. With the YV 33K on his top side, he is a perfect combination of performance and maternal prowess.



YV 112D, DAM OF 121M

122M YV 234F FORTY CREEK 122M

YV 122M | C03125013 | APR 22, 2024 | HORNED

SIRE BR 58Y STANDARD 213B YV 35X ZAM 15Z
BR 213B FORTY CREEK 234F YV 15Z MS SUPER TEAR 85C
BR 15Z LADY ET 153C YV 915W MS TEARDROP 17Y

5 STAR INFORMATION						
Calving Ease		Performance		Maternal	Efficiency	Carcass
***		***		****	***	***
INDIVIDUAL PERFORMANCE		INDIVIDUAL PERFORMANCE				
AGE OF DAM 11		BW	ADJ WW	IND	ADJ YW	IND
PIGM. LEFT EYE 100		96	660	100	993	96
PIGM. RIGHT EYE 100		RibFat	REA	REA/100lbs	%IMF	%LMY
		N/A	N/A	N/A	N/A	N/A
						-0.002

A full pigment Forty Creek son and the maternal brother to the 2024 Medicine Hat Bull Sale Champion that is working well at Dallas Farms.



YV 7X, GRANDDAM OF 122M



YV 122M

CE	BW	WW	YW	MILK	TM	MCE	SC	CW	CowFert
-5.3	5.9	56.3	79.4	15.8	44.0	-9.8	0.6	102.7	19.8
Udder	TeatSize	MPI	FMI	RFI	PWG	Fat	REA	MARB	Carcass
1.1	1.1	104.2	41.4	108	23.1	0.034	0.31	-0.01	73.3

124M YV 33K SILVER CREEK 124M

YV 124M | C03119132 | APR 23, 2024 | HORNED

SIRE YV 234F MR FORTY CREEK 42H YV 39D SUN DESIGN LAD 104F
YV 42H MR SILVER CREEK 33K YV 104F MS SUNNY DESIGN 21J
YV 38B MS SILVER STAR 94D YV 31A MS SUNNY STAR 73E

5 STAR INFORMATION							
Calving Ease		Performance		Maternal	Efficiency	Carcass	
***		****		****	****	****	
INDIVIDUAL PERFORMANCE		INDIVIDUAL PERFORMANCE					
AGE OF DAM	5	BW	ADJ WW	IND	ADJ YW	IND	
PIGM. LEFT EYE	100	85	681	103	1046	101	
PIGM. RIGHT EYE	70	RibFat	REA	REA/100lbs	%IMF	%LMY	RFI
		0.30	11.54	0.99	1.81	61.0	-0.139

124M is a well-marked YV 33K son. He is a big bull with a long side and deep flank - you can see in his picture, he makes his weight in all the right places.



YV 94D, GRANDDAM OF 124M



YV 124M

CE	BW	WW	YW	MILK	TM	MCE	SC	CW	CowFert
2.3	4.3	50.5	76.5	20.8	46.1	-1.4	0.4	82.0	16.2
Udder	TeatSize	MPI	FMI	RFI	PWG	Fat	REA	MARB	Carcass
1.1	1.1	112.5	51.5	117	26.0	0.094	0.29	0.08	61.2

125M YV 104F DESIGNER 125M

YV 125M | C03129991 | APR 23, 2024 | HORNED

SIRE YV 915W DESIGNER ET 39D YV 35X ZAM 15Z
YV 39D SUN DESIGN LAD 104F YV 15Z NOVA GIRL 10E
YV 34W SUNSHINE GIRL 35C YV 915W MS SUPER NOVA 74A

5 STAR INFORMATION							
Calving Ease		Performance		Maternal	Efficiency	Carcass	
***		****		****	***	***	
INDIVIDUAL PERFORMANCE		INDIVIDUAL PERFORMANCE					
AGE OF DAM	9	BW	ADJ WW	IND	ADJ YW	IND	
PIGM. LEFT EYE	100	96	655	99	1142	110	
		RibFat	REA	REA/100lbs	%IMF	%LMY	RFI
PIGM. RIGHT EYE	100	0.22	11.04	0.92	1.34	62.6	0.203

YV 125M is a red-eyed 104F son, that has the same stretch as his father. His dam, Nova Girl 10E, has been a power cow in our program. She has another maternal son working as a top herdsire at Ayrey Herefords.



YV 10E, DAM OF 125M



YV 125M

CE	BW	WW	YW	MILK	TM	MCE	SC	CW	CowFert
-6.0	6.5	57.2	89.8	23.7	52.3	-9.1	0.6	88.7	18.2
Udder	TeatSize	MPI	FMI	RFI	PWG	Fat	REA	MARB	Carcass
1.1	1.2	99.6	38.1	110	32.6	0.064	0.40	-0.04	67.3



YV 135M

EPD	CE	BW	WW	YW	MILK	TM	MCE	SC	CW	CowFert
	4.9	2.1	65.7	84.4	14.4	47.3	0.6	0.4	38.6	18.4
	Udder	TeatSize	MPI	FMI	RFI	PWG	Fat	REA	MARB	Carcass
	1.1	1.2	135.6	125.9	-	18.7	0.014	0.07	0.06	52.8

135M YV 79K EASY SUN STRUCK 135M

YV 135M | C03130444 | APR 27, 2024 | HORNED

SIRE BR 16E EXPRESS ET 64H
BR 64H EXPRESS 79K
BR 115D DOMINO 224F

DAM YV 30U MR STAN SUNSHINE ET 31A
YV 31A MS SUN STRUCK 8E
YV 15Z MS ZAM STRUCK 19C

5 STAR INFORMATION

Calving Ease	Performance	Maternal	Efficiency	Carcass
***	****	****	****	****

INDIVIDUAL PERFORMANCE

AGE OF DAM	9
PIGM. LEFT EYE	100
PIGM. RIGHT EYE	100

INDIVIDUAL PERFORMANCE

BW	ADJ WW	IND	ADJ YW	IND	
92	677	102	969	94	
RibFat	REA	REA/100lbs	%IMF	%LMY	RFI
0.13	11.10	1.08	1.23	64.8	-0.106

YV 135M is Adam's pick of the pen with his moderate stance and explosive shape through his rib and his hip. His dam, 8E, is a power cow that sired the Champion and high-selling bull at Medicine Hat to Brost Land and Cattle.



YV 8E, DAM OF 135M



YV 138M

EPD	CE	BW	WW	YW	MILK	TM	MCE	SC	CW	CowFert
	-4.4	5.5	48.9	68.5	15.5	40.0	-5.4	0.6	86.1	17.8
	Udder	TeatSize	MPI	FMI	RFI	PWG	Fat	REA	MARB	Carcass
	1.0	1.1	101.7	33.1	111	19.6	0.024	0.31	-0.03	70.3

138M YV 33K SUPER KINGSTON 138M

YV 138M | C03119766 | APR 29, 2024 | POLLED

SIRE PCL 4013 GENESEEKER ET 22G
PCL 22G KINGSTON 33K
PCL 6153 MISS JADE ET 56G

DAM AGA 18Z ZOOM STAN CREDITOR 77C
YV 77C MS SUPER CREDIT 72G
YV 2Y MS SUPERNOVA ET 11B

5 STAR INFORMATION

Calving Ease	Performance	Maternal	Efficiency	Carcass
***	*****	***	****	*****

INDIVIDUAL PERFORMANCE

AGE OF DAM	7
PIGM. LEFT EYE	0
PIGM. RIGHT EYE	70

INDIVIDUAL PERFORMANCE					
BW	ADJ WW	IND	ADJ YW		IND
89	741	112	1134		110
RibFat	REA	REA/100lbs	%IMF	%LMY	RFI
0.17	12.63	1.01	2.20	64.9	-0.159

Soggy, soggy, soggy. 138M is an easy-fleshing polled Kingston son with massive scrotal development. He is soft made with a deep chest floor and a kind demeanor.



YV 11B, GRANDDAM OF 138M



YV 140M

EPD	CE	BW	WW	YW	MILK	TM	MCE	SC	CW	CowFert
	3.2	3.4	61.9	89.4	28.2	59.2	6.4	1.2	91.8	17.0
	Udder	TeatSize	MPI	FMI	RFI	PWG	Fat	REA	MARB	Carcass
	1.2	1.2	134.4	109.0	103	27.5	0.064	0.41	0.31	76.8

140M YV 33K KINGSTON DESIGN 140M

YV 140M | C03125014 | APR 30, 2024 | POLLED

SIRE PCL 4013 GENESEEKER ET 22G
PCL 22G KINGSTON 33K
PCL 6153 MISS JADE ET 56G

DAM YV 39D SUN DESIGN LAD 104F
YV 104F MS DOUBLE DESIGN 108J
YV 39D MS DESIGNER 59F

5 STAR INFORMATION

Calving Ease	Performance	Maternal	Efficiency	Carcass
***	*****	****	****	*****

INDIVIDUAL PERFORMANCE

AGE OF DAM	5
PIGM. LEFT EYE	100
PIGM. RIGHT EYE	100

INDIVIDUAL PERFORMANCE					
BW	ADJ WW	IND	ADJ YW		IND
86	701	106	1067		103
RibFat	REA	REA/100lbs	%IMF	%LMY	RFI
0.29	12.05	1.05	2.09	61.6	-0.051

YV 140M is an end-of-April Kingston son with real performance. He is a fancy made bull - his offspring will tip the scales whether you sell them at weaning or on the kill floor.



YV 59F, GRANDDAM OF 140M

141M YV 104F SKY DESIGNER 141M

YV 141M | C03129992 | APR 30, 2024 | HORNED

SIRE YV 915W DESIGNER ET 39D
YV 39D SUN DESIGN LAD 104F
YV 34W SUNSHINE GIRL 35C

DAM YV 35X ZAM 15Z
YV 15Z MS SKY ZAM ET 21E
YV 915W SKY LASS 55Y

5 STAR INFORMATION

Calving Ease	Performance	Maternal	Efficiency	Carcass
***	*****	*****	***	***

INDIVIDUAL PERFORMANCE

AGE OF DAM	9
PIGM. LEFT EYE	100
PIGM. RIGHT EYE	100

INDIVIDUAL PERFORMANCE					
BW	ADJ WW	IND	ADJ YW		IND
91	703	106	1163		112
RibFat	REA	REA/100lbs	%IMF	%LMY	RFI
0.17	10.95	0.93	1.37	63.7	0.280

141M fits the mold well, he is high performing with full pigment and an extra rib. His dam, YV 21E, is likely going to be the replacement in our donor program for his grandam, 55Y, which we have registered 25 offspring out of.



YV 55Y, GRANDDAM OF 141M



YV 141M

CE	BW	WW	YW	MILK	TM	MCE	SC	CW	CowFert
-5.3	5.9	56.3	79.4	15.8	44.0	-9.8	0.6	102.7	19.8
Udder	TeatSize	MPI	FMI	RFI	PWG	Fat	REA	MARB	Carcass
1.1	1.1	104.2	41.4	108	23.1	0.034	0.31	-0.01	73.3

142M YV 46J MISTER BIG CREEK 142M

YV 142M | C03130463 | MAY 1, 2024 | HORNED

SIRE BR 213B FORTY CREEK 234F
YV 234F MR FORTY CREEK 46J
YV 34W SUNSHINE GIRL 35C

DAM BR 213B FORTY CREEK 234F
YV 234F MS WHISKY CREEK 85J
YV 77C MS SILVER CREDIT ET 76F

5 STAR INFORMATION

Calving Ease	Performance	Maternal	Efficiency	Carcass
****	****	*****	*****	***

INDIVIDUAL PERFORMANCE

AGE OF DAM	5
PIGM. LEFT EYE	100
PIGM. RIGHT EYE	100

INDIVIDUAL PERFORMANCE					
BW	ADJ WW	IND	ADJ YW	IND	
90	592	89	939	91	
RibFat	REA	REA/100lbs	%IMF	%LMY	RFI
0.09	8.97	0.94	1.58	64.2	-0.209

Backed by Colemans favorite cow, YV 85J, this moderate bull has the frame and efficiency to make a tremendous set of low-input replacement heifers.



YV 76F, GRANDDAM OF 142M



YV 142M

CE	BW	WW	YW	MILK	TM	MCE	SC	CW	CowFert
-0.1	5.6	46.9	67.8	18.4	41.9	-0.5	0.4	89.3	21.7
Udder	TeatSize	MPI	FMI	RFI	PWG	Fat	REA	MARB	Carcass
1.3	1.3	132.1	76.1	109	20.9	0.014	-0.26	0.04	45.9

143M YV 234F FORTY CREEK 143M

YV 143M | C03119785 | MAY 2, 2024 | HORNED

SIRE BR 58Y STANDARD 213B
BR 213B FORTY CREEK 234F
BR 15Z LADY ET 153C

DAM YV 915W SILVER STRUCK LAD 37A
YV 37A MS LADY STRUCK 81G
YV 148X SKY LADY 25C

5 STAR INFORMATION

Calving Ease	Performance	Maternal	Efficiency	Carcass
***	****	****	***	***

INDIVIDUAL PERFORMANCE

AGE OF DAM	7
PIGM. LEFT EYE	0
PIGM. RIGHT EYE	100

INDIVIDUAL PERFORMANCE					
BW	ADJ WW	IND	ADJ YW		IND
89	634	96	1019		98
RibFat	REA	REA/100lbs	%IMF	%LMY	RFI
0.11	11.38	1.03	1.04	65.5	-0.004

YV 143M is a rugged made Forty Creek son with added growth and hair. His dam, 81G, is a consistent producer with numerous females retained in the herd.



YV 25C, GRANDDAM OF 143M



YV 143M

CE	BW	WW	YW	MILK	TM	MCE	SC	CW	CowFert
-1.2	4.9	48.4	72.5	16.6	40.8	-5.0	0.6	84.9	16.6
Udder	TeatSize	MPI	FMI	RFI	PWG	Fat	REA	MARB	Carcass
1.0	1.1	102.2	50.5	106	24.1	0.014	0.19	-0.03	63.3



YV 148M

EPD	CE	BW	WW	YW	MILK	TM	MCE	SC	CW	CowFert
	-0.9	5.2	48.8	77.0	19.0	43.4	-3.6	0.8	89.3	18.6
Udder	TeatSize	MPI	FMI	RFI	PWG	Fat	REA	MARB	Carcass	
1.0	1.0	113.9	73.4	116	28.2	0.074	0.13	0.12	67.7	

148M YV 234F FORTY CREEK 148M

YV 148M | C03119789 | MAY 3, 2024 | HORNED

SIRE BR 58Y STANDARD 213B
BR 213B FORTY CREEK 234F
BR 15Z LADY ET 153C

DAM AGA 18Z ZOOM STAN CREDITOR 77C
YV 77C MS ZAMS CREDIT 43J
YV 15Z MS ZAM LASS 48D

5 STAR INFORMATION				
Calving Ease	Performance	Maternal	Efficiency	Carcass
***	****	***	*****	*****
INDIVIDUAL PERFORMANCE				
AGE OF DAM	BW	ADJ WW	IND	ADJ YW
5	88	621	94	996
PIGM. LEFT EYE	RibFat	REA	REA/100lbs	%IMF
100	0.28	11.30	1.04	1.67
PIGM. RIGHT EYE	RFI	%LMY		
100	-0.190	61.3		

YV 148M is as long as a freight train, with great markings all around. This guy doesn't have many holes in him. He combines 5 stars for efficiency with 5 stars for carcass. His calves will be in demand by the feedyards.



BR 153C, GRANDDAM OF 148M



YV 150M

EPD	CE	BW	WW	YW	MILK	TM	MCE	SC	CW	CowFert
	-4.4	5.5	48.9	68.5	15.5	40.0	-5.4	0.6	86.1	17.8
Udder	TeatSize	MPI	FMI	RFI	PWG	Fat	REA	MARB	Carcass	
1.0	1.1	101.7	33.1	111	19.6	0.024	0.31	-0.03	70.3	

150M YV 234F FORTY CREEK 150M

YV 150M | C03119790 | MAY 4, 2024 | HORNED

SIRE BR 58Y STANDARD 213B
BR 213B FORTY CREEK 234F
BR 15Z LADY ET 153C

DAM YV 7C LIGHT CARGO 13F
YV 13F MS SILVER CARGO 35H
YV MS SILVER CREDIT ET 60F

5 STAR INFORMATION				
Calving Ease	Performance	Maternal	Efficiency	Carcass
***	****	*****	*****	*****
INDIVIDUAL PERFORMANCE				
AGE OF DAM	BW	ADJ WW	IND	ADJ YW
6	88	633	96	926
PIGM. LEFT EYE	RibFat	REA	REA/100lbs	%IMF
100	0.13	12.51	1.22	1.62
PIGM. RIGHT EYE	RFI	%LMY		
90	-0.205	65.8		

YV 150M is a well-rounded deep-flanked bull with a great carcass data set. His dam, 35H, is a moderate cow with a lifetime record of weaning 60% of her body weight. His maternal brother is being used at BJ Cattle Co, where the first set of calves sold like hot cakes.



YV 35H, DAM OF 150M



YV 152M

EPD	CE	BW	WW	YW	MILK	TM	MCE	SC	CW	CowFert
	4.4	3.6	64.6	84.8	10.8	43.1	1.5	0.4	13.1	15.6
Udder	TeatSize	MPI	FMI	RFI	PWG	Fat	REA	MARB	Carcass	
1.2	1.3	124.6	135.4	-	20.2	0.014	0.07	0.12	43.3	

152M YV 234F FORTY CREEK 152M

YV 152M | C03130397 | MAY 8, 2024 | HORNED

SIRE BR 58Y STANDARD 213B
BR 213B FORTY CREEK 234F
BR 15Z LADY ET 153C

DAM LBH 268P STANDARD 30U
YV 30U MS STD STAR LASS 10B
YV 915W SILVER LADY 40Z

5 STAR INFORMATION				
Calving Ease	Performance	Maternal	Efficiency	Carcass
***	****	*****	****	*****
INDIVIDUAL PERFORMANCE				
AGE OF DAM	BW	ADJ WW	IND	ADJ YW
12	98	653	99	1055
PIGM. LEFT EYE	RibFat	REA	REA/100lbs	%IMF
100	0.25	13.07	1.11	1.73
PIGM. RIGHT EYE	RFI	%LMY		
100	-0.221	63.3		

YV 152M is a looker. He has a nice made head that adds to his eye appeal, but he is more than just looks, his cow, 10B, has produced excellent females in the heart of our herd, producing until she was 12 years old.



YV 10B, DAM OF 152M

153M YV 68K ZAMS STAR 153M

YV 153M | C03130398 | MAY 9, 2024 | HORNED

SIRE YV 15Z SUPER ZAM 22C AGA 28Z CARGO SPORT 7C
YV 22C MR ZAMS CREDIT 68K YV 7C MS STARLITT SPORT 74F
YV MS SILVER CREDIT ET 60F YV 39B STARLITT 116D

5 STAR INFORMATION

Calving Ease	Performance	Maternal	Efficiency	Carcass
***	*****	*****	****	***

INDIVIDUAL PERFORMANCE

AGE OF DAM	8	BW	ADJ WW	IND	ADJ YW	IND
PIGM. LEFT EYE	0	95	656	99	1055	102
PIGM. RIGHT EYE	0	RibFat	REA	REA/100lbs	%IMF	%LMY
		0.28	11.09	1.02	1.79	61.2
						-0.095

Easy moving, 153M is a softer made version of his sire, 68K. His dam, 74F, is an easy-keeper and consistent producer.



YV 74F, DAM OF 153M



YV 153M

CE	BW	WW	YW	MILK	TM	MCE	SC	CW	CowFert
5.5	3.0	65.0	85.4	9.0	41.5	0.5	0.4	5.1	16.0
Udder	TeatSize	MPI	FMI	RFI	PWG	Fat	REA	MARB	Carcass
1.2	1.1	126.6	136.5	-	20.4	-0.016	0.10	0.05	46.8

155M YV 104F SUN DESIGN 155M

YV 155M | C03120167 | MAY 9, 2024 | HORNED

SIRE YV 915W DESIGNER ET 39D YV 35X ZAM 15Z
YV 39D SUN DESIGN LAD 104F YV 15Z SNOOKIE ZAM 43E
YV 34W SUNSHINE GIRL 35C YV 915W MS STAR SNOOKIE 38Y

5 STAR INFORMATION

Calving Ease	Performance	Maternal	Efficiency	Carcass
***	****	****	***	*****

INDIVIDUAL PERFORMANCE

AGE OF DAM	9	BW	ADJ WW	IND	ADJ YW	IND
PIGM. LEFT EYE	100	90	647	98	1084	105
PIGM. RIGHT EYE	0	RibFat	REA	REA/100lbs	%IMF	%LMY
		0.31	11.69	1.14	1.59	60.9
						0.130

YV 155M is a 104F son that combines all of our major sire groups including, StarStruck, Zam and Designer. He scanned a 1.14 for ribeye/100wt and has excess IMF to go around.



YV 43E, DAM OF 155M



YV 155M

CE	BW	WW	YW	MILK	TM	MCE	SC	CW	CowFert
3.4	3.6	48.5	81.5	19.4	43.7	2.3	0.3	80.8	15.2
Udder	TeatSize	MPI	FMI	RFI	PWG	Fat	REA	MARB	Carcass
1.2	1.2	114.8	72.6	106	33.0	0.094	0.04	0.06	65.1

157M YV 234F FORTY CREEK 157M

YV 157M | C03129993 | MAY 10, 2024 | HORNED

SIRE BR 58Y STANDARD 213B BR 213B FORTY CREEK 234F
BR 213B FORTY CREEK 234F YV 234F MS WHISKEY GIRL 26H
BR 15Z LADY ET 153C YV 15Z ZAM LASS 68D

5 STAR INFORMATION

Calving Ease	Performance	Maternal	Efficiency	Carcass
***	****	****	***	****

INDIVIDUAL PERFORMANCE

AGE OF DAM	6	BW	ADJ WW	IND	ADJ YW	IND
PIGM. LEFT EYE	100	93	639	97	996	96
PIGM. RIGHT EYE	100	RibFat	REA	REA/100lbs	%IMF	%LMY
		0.08	12.40	1.18	1.37	67.0
						-0.026

YV 157M is dark red and limber like a cat. He is double bred Forty Creek - his hooded eye and big pigment stand out in the bull run.



YV 26H, DAM OF 157M



YV 157M

CE	BW	WW	YW	MILK	TM	MCE	SC	CW	CowFert
-6.1	6.6	51.5	81.0	18.6	44.4	-8.5	0.5	105.1	20.4
Udder	TeatSize	MPI	FMI	RFI	PWG	Fat	REA	MARB	Carcass
1.0	1.1	106.8	66.5	111	29.5	0.014	0.40	0.02	75.5



YV 159M

EPD	CE	BW	WW	YW	MILK	TM	MCE	SC	CW	CowFert
	2.3	3.0	43.7	76.0	24.1	46.0	0.0	0.8	89.3	21.8
	Udder	TeatSize	MPI	FMI	RFI	PWG	Fat	REA	MARB	Carcass
	1.1	1.1	137.0	87.7	108	32.3	0.084	0.22	0.10	70.4

159M YV 234F FORTY CREEK 159M

YV 159M | C03121683 | MAY 13, 2024 | HORNED

SIRE BR 58Y STANDARD 213B
BR 213B FORTY CREEK 234F
BR 15Z LADY ET 153C

DAM BR 028X SENSATION ET 101D
YV MS SILVER DUCHESS 11H
YV 77C MS SILVER CREDIT ET 46F

5 STAR INFORMATION							
Calving Ease		Performance		Maternal	Efficiency	Carcass	
***		****		*****	***	*****	
INDIVIDUAL PERFORMANCE		INDIVIDUAL PERFORMANCE					
AGE OF DAM	6	BW	ADJ WW	IND	ADJ YW	IND	
PIGM. LEFT EYE	100	84	606	92	1061	103	
PIGM. RIGHT EYE	100	RibFat	REA	REA/100lbs	%IMF	%LMY	RFI
		0.33	12.25	1.05	1.44	60.8	0.055

This big-boned, moderate-framed bull is as honest as they come. His dam, 11H, is a petite cow that always outproduces herself.



YV 11H, DAM OF 159M



YV 164M

EPD	CE	BW	WW	YW	MILK	TM	MCE	SC	CW	CowFert
	0.2	4.8	42.4	68.0	18.0	39.2	-3.1	0.5	79.5	18.6
	Udder	TeatSize	MPI	FMI	RFI	PWG	Fat	REA	MARB	Carcass
	1.0	1.1	114.4	76.6	116	25.6	0.034	-0.03	0.09	59.4

164M YV 234F FORTY CREEK 164M

YV 164M | C03121686 | MAY 19, 2024 | HORNED

SIRE BR 58Y STANDARD 213B
BR 213B FORTY CREEK 234F
BR 15Z LADY ET 153C

DAM AGA 18Z ZOOM STAN CREDITOR 77C
YV 77C MS SILVER CREDIT ET 24F
YV 82R SILVER GAL 920W

5 STAR INFORMATION							
Calving Ease		Performance		Maternal	Efficiency	Carcass	
***		****		****	*****	***	
INDIVIDUAL PERFORMANCE		INDIVIDUAL PERFORMANCE					
AGE OF DAM	8	BW	ADJ WW	IND	ADJ YW	IND	
PIGM. LEFT EYE	100	91	601	91	993	96	
PIGM. RIGHT EYE	100	RibFat	REA	REA/100lbs	%IMF	%LMY	RFI
		0.14	10.44	0.99	1.57	64.1	-0.260

this long-spined Forty Creek son excels in efficiency and is no slouch to look at. He combines the body mass of his father with the ease of condition from his maternal granddam, 920W, that produced until she was 15.



YV 920W, GRANDDAM OF 164M



YV 165M

EPD	CE	BW	WW	YW	MILK	TM	MCE	SC	CW	CowFert
	-4.2	4.9	48.2	75.0	22.2	46.3	-6.8	0.5	100.1	22.5
	Udder	TeatSize	MPI	FMI	RFI	PWG	Fat	REA	MARB	Carcass
	1.1	1.3	120.6	49.3	115	26.8	0.024	0.18	0.03	66.2

165M YV 234F FORTY CREEK 165M

YV 165M | C03121687 | MAY 28, 2024 | HORNED

SIRE BR 58Y STANDARD 213B
BR 213B FORTY CREEK 234F
BR 15Z LADY ET 153C

DAM YV 15Z SUPER ZAM 22C
YV 22C MS BO ZAM 82E
YV BO SKY LASS ET 729T

5 STAR INFORMATION								
Calving Ease		Performance		Maternal	Efficiency	Carcass		
***		*****		*****	*****	***		
INDIVIDUAL PERFORMANCE		INDIVIDUAL PERFORMANCE						
AGE OF DAM		9	BW	ADJ WW	IND	ADJ YW	IND	
PIGM. LEFT EYE		100	94	623	94	983	95	
PIGM. RIGHT EYE		0	RibFat	REA	REA/100lbs	%IMF	%LMY	RFI
			0.09	10.68	0.98	1.27	65.5	-0.234

This round-musled end-of-May bull stands out for his overall quality and dimension. The bottom side of his pedigree is filled with our favourite cows, with his granddam proving herself over 13 progeny and his dam headed into our embryo program this spring.



YV 729T, GRANDDAM OF 165M

166M

YV 166M

YV 166M | C03121688 | MAY 31, 2024 | HORNED

SIRE
BR 58Y STANDARD 213B
BR 213B FORTY CREEK 234F
BR 15Z LADY ET 153C

DAM
AGA 28Z CARGO SPORT 7C
YV 7C MS SILVER SPORT 2F
YV 37A MS SILVER STRUCK 46D

5 STAR INFORMATION

Calving Ease	Performance	Maternal	Efficiency	Carcass
***	****	*****	***	***

INDIVIDUAL PERFORMANCE

AGE OF DAM	8
PIGM. LEFT EYE	80
PIGM. RIGHT EYE	70

INDIVIDUAL PERFORMANCE

BW	ADJ WW	IND	ADJ YW	IND	
90	630	95	958	93	
RibFat	REA	REA/100lbs	%IMF	%LMY	RFI
0.13	10.52	1.07	1.01	64.4	0.134

These Forty Creek Bulls just keep hitting the mark. 166M's three-quarter-sibling was the high seller and Grand Champion at the 2024 Calgary Bull Sale, selling to Ridder Hereford Ranch in Nebraska.



YV 2F, DAM OF 166M



YV 166M

Thank You

to Orrin Henn for partnering with us on various deals, to Roy Bushfield for cowboying up at a moment's notice, to Bryn Horne for always helping get the cows home and Belle Gauthier for always being there at a phone call's notice.





YV 313M

313M YV ALL ROUND 313M

YV 313M | 2386497 | FEB 11, 2024 | BLACK

SIRE HA COWBOY UP 5405C
HF ALL-ROUND 130E
HF MISS BLACKCAP 296Y

DAM FREYBURN GARETH 177G
CIRCLE G LUCY 1107J
CIRCLE G LUCY 816F

5 STAR INFORMATION

Calving Ease	Performance	Maternal	Efficiency	Carcass
*****	*****	*****	***	***

INDIVIDUAL PERFORMANCE

AGE OF DAM	BW	ADJ WW	IND	ADJ YW	IND	
5	80	574	81	1087	108	
EXPECTED PROGENY DIFFERENCES	CE	BW	WW	YW	MCE	MILK
	7.0	0.6	34	62	7.0	21
RibFat	REA	REA/100lbs	%IMF	%LMY	RFI	
0.28	11.13	1.13	2.22	60.5	0.069	

YV 313M is a fancy made All-Round son, with a moderate square stance and birth weight numbers that make him attractive to use on heifers without sacrificing performance.



YV 315M

315M YV HAZARD 315M

YV 315M | 2398099 | FEB 12, 2024 | BLACK

SIRE HF ROPER 27F
3 G HAZARD 5H
3 "G" PRIDE 29F

DAM 3 "G" STORM CENTER 3F
3 G ERICA 57K
3 "G" ERICA 12C

5 STAR INFORMATION

Calving Ease	Performance	Maternal	Efficiency	Carcass
*****	*****	*****	***	***

INDIVIDUAL PERFORMANCE

AGE OF DAM	BW	ADJ WW	IND	ADJ YW	IND	
4	72	680	99	1146	98	
EXPECTED PROGENY DIFFERENCES	CE	BW	WW	YW	MCE	MILK
	9.0	-0.8	49	86	8.0	24
RibFat	REA	REA/100lbs	%IMF	%LMY	RFI	
0.26	11.56	1.13	2.21	61.4	-0.012	

A sure fire calving ease bull, with a little extra growth. 315M is out of a beautiful first calving Storm Center daughter.



YV 318M

318M YV HAZARD 318M

YV 318M | 2398100 | FEB 13, 2024 | BLACK

SIRE HF ROPER 27F
3 G HAZARD 5H
3 "G" PRIDE 29F

DAM HF QUICK DRAW 145G
3 G PRIDE 1K
3 G PRIDE 31G

5 STAR INFORMATION

Calving Ease	Performance	Maternal	Efficiency	Carcass
****	****	****	***	***

INDIVIDUAL PERFORMANCE

AGE OF DAM	BW	ADJ WW	IND	ADJ YW	IND	
4	82	727	106	1211	102	
EXPECTED PROGENY DIFFERENCES	CE	BW	WW	YW	MCE	MILK
	5.0	1.1	57	100	6.0	28
RibFat	REA	REA/100lbs	%IMF	%LMY	RFI	
0.42	9.90	0.9	2.84	55.9	0.095	

318M's frame fits in the middle of the group. His first calver did a great job indexing above average at both weaning and yearling time. He also scanned right towards the top for IMF.

322M YV ALL ROUND 322M

YV 322M | 2387132 | FEB 23, 2024 | BLACK

SIRE HA COWBOY UP 5405C
HF ALL-ROUND 130E
HF MISS BLACKCAP 296Y

DAM FREYBURN GARETH 177G
CIRCLE G LUCY 185J
CIRCLE G LUCY 809F

5 STAR INFORMATION						
Calving Ease		Performance		Maternal	Efficiency	Carcass
*****		***		*****	*****	***
INDIVIDUAL PERFORMANCE						
AGE OF DAM		BW	ADJ VYW	IND	ADJ YW	IND
5		72	621	90	1058	92
EXPECTED PROGENY DIFFERENCES	CE	BW	VYW	YW	MCE	MILK
	9.0	-0.4	38	66	8.0	23
RibFat	REA	REA/100lbs	%IMF	%LMY	RFI	
0.20	10.90	1.13	2.03	62.4	-0.137	

YV 322M is a big-ribbed long-sided moderate-framed All-Round son. With top 10% calving ease and birth weight numbers, he will make calving heifers easy. His mother is a neat-uddered Gareth daughter.



YV 322M

323M YV QUICKDRAW 323M

YV 323M | 2387133 | FEB 24, 2024 | BLACK

SIRE HF QUICK DRAW 145G
3 G QUICKDRAW 7J
3 G PRIDE 50G

DAM HF CRACK THE GATE 25H
CIRCLE G PRINCESS 2101K
CIRCLE G PRINCESS 711E

5 STAR INFORMATION							
Calving Ease		Performance		Maternal	Efficiency	Carcass	
***		*****		*****	*****	***	
INDIVIDUAL PERFORMANCE							
AGE OF DAM		BW	ADJ WW	IND	ADJ YW	IND	
4		92	666	94	1223	117	
EXPECTED PROGENY DIFFERENCES	CE		BW	WW	YW	MCE	MILK
	-3.0		3.5	53	98	-2.0	25
RibFat	REA	REA/100lbs		%IMF	%LMY	RFI	
0.24	10.07	0.94		2.70	60.7	-0.056	

YV 323M is a performance bull from a trusted line. He is out of a young Crack the Gate cow and he is our highest indexing yearling weight bull on the angus side.



YV 323M

327M YV ALL ROUND 327M

YV 327M | 2387137 | MAY 27, 2024 | BLACK

SIRE HA COWBOY UP 5405C
HF ALL-ROUND 130E
HF MISS BLACKCAP 296Y

DAM SITZ PAYWEIGHT 749E
CIRCLE G LUCY 067H
CIRCLE G LUCY 547C

5 STAR INFORMATION						
Calving Ease	Performance		Maternal	Efficiency	Carcass	
****	****		*****	***	***	
INDIVIDUAL PERFORMANCE						
AGE OF DAM	BW	ADJ WW	IND	ADJ YW	IND	
6	81	641	100	1150	100	
EXPECTED PROGENY DIFFERENCES	CE	BW	WW	YW	MCE	MILK
	6.5	0.9	38	70	5.0	24
RibFat	REA	REA/100lbs	%IMF	%LMY	RFI	
0.23	14.08	1.21	1.42	64.2	-0.013	

YV 327M is a compact well-muscled package that adds extra hair and bone. He is extremely eye appealing - his dam, 67H, was one of the top picks from the Circle G dispersal.



YV 327M



YV 329M

329M YV REVIVAL 329M

YV 329M | 2453052 | JAN 26, 2024 | BLACK

SIRE WOODHILL RELEVANCE
WOODHILL REVIVAL H028
WOODHILL EVERGREEN A43-F039

DAM VISION UNANIMOUS 1418
MURPHY'S MISSIE 2207
MURPHY'S MISSIE 1813

5 STAR INFORMATION

Calving Ease	Performance	Maternal	Efficiency	Carcass
***	*****	****	***	****

INDIVIDUAL PERFORMANCE

AGE OF DAM	BW	ADJ WW	IND	ADJ YW	IND	
4	88	771	100	1309	112	
EXPECTED PROGENY DIFFERENCES	CE	BW	WW	YW	MCE	MILK
	6.0	0.5	68	120	8.5	20
RibFat	REA	REA/100lbs	%IMF	%LMY	RFI	
N/A	N/A	N/A	N/A	N/A	0.110	

YV 329M is a gentle giant. He has massive performance with a huge spread from an 88 lb birth weight to a 1309 lb yearling weight. He is in the top 15% of EPDs for both weaning and yearling weight.



YV 331M

331M YV BLOODLINE 331M

YV 331M | 2398714 | FEB 5, 2024 | BLACK

SIRE S A V RAINFALL 6846
S A V BLOODLINE 9578
S A V EMBLYNETTE 2369

DAM BROOKING FIREBRAND 6068
MURPHY'S BARDOLIA 2112
DIAMOND T BARDOLIA 1441

5 STAR INFORMATION

Calving Ease	Performance	Maternal	Efficiency	Carcass
***	*****	****	***	***

INDIVIDUAL PERFORMANCE

AGE OF DAM	BW	ADJ WW	IND	ADJ YW	IND	
5	89	744	96	1119	78	
EXPECTED PROGENY DIFFERENCES	CE	BW	WW	YW	MCE	MILK
	-5.0	4.3	60	110	6.0	28
RibFat	REA	REA/100lbs	%IMF	%LMY	RFI	
0.19	9.57	0.88	2.18	61.6	0.126	

This big-middled Bloodline son is easy fleshing. He has a stacked pedigree, going back to the proven Firebrand bull on the bottom side. He is ready to work and add pounds to your calves.



YV 334M

334M YV SOONER 334M

YV 334M | 2398716 | FEB 28, 2024 | BLACK

SIRE PF OKLAHOMA 6625
BROOKING SOONER 0052
BROOKING ROYAL LASS 8007

DAM REMITALL ACHIEVER 590U
HENDERSON CHLOE 30'12
REMINGTON CHLOE 72T

5 STAR INFORMATION

Calving Ease	Performance	Maternal	Efficiency	Carcass
****	*****	****	***	****

INDIVIDUAL PERFORMANCE

AGE OF DAM	BW	ADJ WW	IND	ADJ YW	IND	
14	81	694	90	1162	100	
EXPECTED PROGENY DIFFERENCES	CE	BW	WW	YW	MCE	MILK
	4.0	1.8	49	90	0.0	21
RibFat	REA	REA/100lbs	%IMF	%LMY	RFI	
0.25	9.64	0.89	4.12	60.1	0.029	

This soft made Sooner son is backed by a seasoned fourteen year old cow that doesn't stop. He is smooth in his makeup and carries his depth from his heart to his flank.

HEREFORD REFERENCE SIRES



BR 64H EXPRESS 79K

YV 79K | C03094859 | HORNED

79K was purchased as a calf at Braun Ranch in 2023, and stood out with his top notch dam, rugged soundness and exceptional calving ease. He has worked great on heifers and can lower birth weights on everything, with top percentile CE, BW and MPI EPD's.



YV 234F FORTY CREEK ET 19J

YV 19J | C03087775 | HORNED

19J is a Forty Creek son out of a 12 year old cow that has worked her way into our donor program. His mother makes excellent females and 19J has the classic Forty Creek qualities a cattleman of any breed can appreciate.



BR 213B FORTY CREEK 234F

BR 234F | C03048035 | HORNED

Forty Creek has proven himself both here at YV Ranch as well as Braun Ranch, with over 275 registered offspring. His sons will throw pigment and stoutness in their calves, with a great hooded eye and daughters that will stay in the herd. He has become a trait leader in Sustained Cow fertility, RFI as well as Carcass Weight. Forty Creek is co-owned with Braun Ranch.



YV 39D SUN DESIGN LAD 104F

YV 104F | C03052501 | HORNED

YV 104F sons will throw all the traits we have admired in his grandsire, Starstruck. They will throw super long calves that will have tremendous feet and legs and have a thick mossy hair coat. With a large group of daughters in production, he has proven his maternal side as well.



YV 77C MR CREDIT STRUCK 37H

YV 37H | C03073548 | HORNED

YV 37H was added to our AI program as a son of 77C with added performance, out of one of our most proven cows. 37H sons will excel in performance and add pounds to calves in the fall.



YV 234F SILVER CREEK 48J

YV 48J | C03086613 | HORNED

48J is a hairy, deep sided and soft made Forty Creek son that MJT Cattle Co picked out from our bull pen in 2023. We retained in-herd semen use and have been using him in our embryo program. His dam 41F is an ET daughter from one of our all time favorite matings, our good old 7X donor crossed with 31A.

HEREFORD REFERENCE SIRES



YV 22C MR ZAMS CREDIT 68K

YV 68K | C03098527 | HORNED

YV 68K was an impressive bull and top indexing bull all the way through, indexing 116 at weaning and 110 as a yearling bull. He goes back to some of our favourite cows, and is in the top 5% for RFI. He was an obvious choice to use to replace his sire, YV 22C.



YV 42H MR SILVER CREEK 33K

YV 33K | C03096896 | HORNED

We chose to use YV 33K because of his moderate stance and solid red markings, as well as his stacked maternal lineage with some of our best donor cows on both sides of his pedigree. He has passed his volume and athleticism to his calves and we expect the daughters to excel.



YV 101D MR DUKE STRUCK 138H

YV 138H | C03076113 | HORNED

YV 138H was purchased by our friends at Red Rock Land & Cattle Co., after admiring the bull's natural muscle and beautiful-uddered dam. The following year they were kind enough to partner with us and allowed us to use him in our heifer pen, where he has the ideal mix of calving ease without giving up any performance or power.



PCL 22G KINGSTON 33K

DAWM 33K | C03093137 | POLLED

Kingston was our pick of the bull calves at Phantom Creek's famous dispersal, where he has a solid cow family as well as a strong set of numbers. Excelling in calving ease, BW, udder and teat values as well as an excellent set of carcass numbers. He bred well on cows and heifers and left sons with power and plenty of shape.



SHF INSIGHT F158 J354 ET

J354 | C03106109 | POLLED

Insight was used on the polled side of our embryo program, partnering with Little Fort Herefords as a proven way to add performance, pigment and carcass merit.



TH BIG COUNTRY 537G ET

537G | C03106109 | POLLED

Big Country is a calving ease AI sire that has added thickness and mass, making moderate bulls that bring a balanced EPD profile with impressive calving ease and trait leading rib eye numbers.

ANGUS REFERENCE SIRES



HF ALL-ROUND 130E

HAMI 130E | 2003556 | BLACK

All-Round round was used as a walking bull and was appreciated for his square, moderate stance and solid feet, getting used on both cows and heifers with proven calving ease.



WOODHILL REVIVAL H028

IMP 028H | 2212304 | BLACK

Revival was selected to use on heifers, showing moderate birthweights and explosive growth after birth. The Revival sons we saw last spring impressed us enough to use him ourselves, and his sons have shown exceptional growth with a hard to miss look.



S A V BLOODLINE 9578

IMP 9578F | 2184241 | BLACK

Bloodline is a rainfall son and SAV high seller with added performance that will increase size and weight to calves.



BROOKING SOONER 0052

JSTN 52H | 2141073 | BLACK

Sooner is an Oklahoma son that has moderated birthweight and sustained performance, all while keeping balanced traits on both the maternal and carcass side of his EPDs



3 G HAZARD 5H

RCT 5H | 2180541 | BLACK

Hazard is a son of the proven Roper 27F bull that has curve bending calving ease numbers, and incredible length and shape. We have used roper sons in both our commercial and purebred herd, leaving behind excellent females and strong steers.



Harness the power **OF YV RANCH, NIXDORFF SALES & MARKETING**

Reach out to any of the YV Ranch team to look for opportunities to market your YV influence feeder steers, open and replacement quality heifers in 2026.

YV sales and marketing; unleashing the power of YV Genetics. Creating more value, easier transactions and greater control in your cattle sales.

Hal 403-852-9234 • Adam 587-580-8310 • Coleman 403-990-1254



CUSTOMER'S FEEDER STEERS PURCHASED FALL 2025



IN LOVING MEMORY OF BARBS NIXDORFF

October 29, 1939 - October 19, 2025

Barbara (Barbs) Katherine Nixdorff was a loving wife, mother, grandmother, great-grandmother and friend. She passed away on the evening of October 19, 2025 at the age of 85 at the Peter Loughheed Hospital.

Barbs was born in Calgary on October 29, 1939 and raised on the family farm on the south side of Irricana. Growing up, Barbs attended Irricana School for grades 1 through 8, Kathryn School for grades 9 through 11, and in 1957 she graduated from Crescent Heights High School in Calgary. Barbs married Scott Nixdorff on March 7, 1959 and they settled on their farm in Yankee Valley east of Airdrie, where they raised their three sons. Barbs was very passionate about taking care of her family; she especially enjoyed visiting with her grandchildren and great-grandchildren. She supported several generations of the Nixdorff family in their farming and ranching ventures. Barbs will be dearly missed.

terms and conditions **2026 NIXDORFF GENETICS BULL SALE**

TERMS OF SALE: Cash or cheque payable at par on sale day unless prior arrangements have been made; no invoicing on buyers in attendance unless previous arrangements have been made. Every animal sells to the highest bidder and in cases of disputes, the auctioneer's decisions will be final. Announcements from the auction block will take precedence over the printed matter in the catalogue. Current exchange rates will be announced sale day. All monies are in Canadian funds.

HEALTH: All animals in the sale have met all necessary health requirements.

GUARANTEE: Each animal becomes the purchaser's risk immediately after the animal is sold. All animals in the sale will be sold under terms and guarantees set forth by the Canadian Hereford Association and Canadian Angus Association with regards to health, freedom from genetic conditions and from both reproductive and specific genetic unsoundness.

LIABILITIES: All persons attend the sale at their own risk. The seller, facility owner and sale manager assume no liability, legal or otherwise, for any accident that occurs.

YV RANCH
NELS & TERRI NIXDORFF
280201 TWP Rd 270
Rocky View County, AB Canada
T4A 2T2



Time Sensitive Material



THURSDAY, FEBRUARY 19, 2026
WWW.YV-RANCH.COM